

INDEX SEMINUM 2023

Botanischer Garten
Innsbruck



Innsbrucker Küchenschelle
Pulsatilla oenipontana

Botanischer Garten und Alpengarten des Institutes für Botanik der Universität Innsbruck

Sternwartestraße 15A

A-6020 Innsbruck

Tel: +43 512 507-51110

E-Mail: Botanischer-Garten@uibk.ac.at

www.uibk.ac.at/de/botany/botanical-garden/

www.facebook.com/BotanischerGartenUniversitaetInnsbruck

<https://www.instagram.com/botanischer.garten.innsbruck/>

IPEN-Code: IB

CITES-registration number: AT 015

Samen gesammelt von / Seeds collected by: M. Bodner, L. Herrmann, M. Imhiavan, L. Isser, A. Kihr, V. Leitner, S. Ritzenfeld, B. Siller, K. Uhrmann, K. Pagitz, P. Schönschwetter und unseren Lehrlingen und Heinzelmännchen / our apprentices and the hard working helping crew.

Layout: Cäcilia Lechner Pagitz

Abkürzungen:

G	Samen aus den Gewächshäusern
F	Samen aus dem Freigelände; 600mNN
A	Samen von Alpinpflanzen; 600mNN
P	Samen vom Alpengarten am Patscherkofel; 2000mNN
In	Wildaufsammlung
W/	Samen von kultivierten Pflanzen mit bekannter Wildherkunft....

Hybridisierung ist nicht ausgeschlossen.

Abbreviations:

G	seeds from greenhouse plants
F	seeds from outdoor plants, 600m a.s.l.
A	seeds from alpine plants, 600m a.s.l.
P	seeds collected in the Alpine Garden on MT. Patscherkofel, 2000m a.s.l.
In	seeds collected from the wild
W/	seeds from cultivated plants with known wild origin....

Hybridisation cannot be excluded.

Nomenklatur / Nomenclatural sources: <https://www.worldfloraonline.org/> – <https://www.alpinegardensociety.net/encyclopaedia/> – Erhardt W. et al.: Der Große Zander – Enzyklopädie der Pflanzennamen. 19. Auflage 2014. – Aeschmann D., Lauber K. et al.: Flora Alpina. 2004. – Fischer M., Oswald K., Adler W.: Exkursionsflora für Österreich, Liechtenstein, Südtirol. 3. Auflage 2008. – Jelitto L., Schacht W., Simon H.: Die Freiland Schmuckstauden. 5. Auflage 2002. – Egli U. (Hrsg.): Sukkulente-Lexikon. Bd.1-4, 2001-2003. – Edward F. Anderson: Das große Kakteen Lexikon. 2005. – Hartmann H.E.K. (Ed.): Aizoaceae. Bd. 1 & 2, 2001 – Hammer S. A.: Lithops–Treasures of the Veld. 1999.

Amaryllidaceae

- | | | | |
|----|-----|--|-------------------|
| 1 | *A* | Allium altaicum Pall.
<i>W/RU-Altai-Chuya Steppe-1750m</i> | RU-0-IB-021058 |
| 2 | *A* | Allium cernuum Roth
<i>W/US-New Mexico-Ruidosa</i> | US-0-Bern-1983/30 |
| 3 | *A* | Allium cyathophorum Bureau & Franch. | XX-0-IB-026771 |
| 4 | *A* | Allium denudatum F.Delaroche
<i>W/RU-Kauk-Kabardino-Balkaria-1400m</i> | RU-0-IB-000271 |
| 5 | *A* | Allium falcifolium Hook. & Arn.
<i>W/US-Kalifornien</i> | US-0-IB-028011 |
| 6 | *A* | Allium leucocephalum Turcz. ex Ledeb.
<i>W/MN-Hentiy Mts., alt. 1200-1500 m, (bulbilis)</i> | MN-0-IB-020991 |
| 7 | *A* | Allium libani Boiss. | XX-0-IB-026922 |
| 8 | *A* | Allium lusitanicum Lam. | XX-0-IB-000294 |
| 9 | *A* | Allium narcissiflorum Vill. | XX-0-IB-027548 |
| 10 | *A* | Allium ochroleucum W.&K.
<i>W/BA-Dinaria-Mount Veliki Troglav-1900m</i> | BA-0-IB-017587 |
| 11 | *A* | Allium pyrenaicum Costa & Vayr | XX-0-IB-027531 |
| 12 | *A* | Allium saxatile M.Bieb.
<i>W/ME-Prokletije-Kuci-Brezovica-Mt. Zijevo-1900m</i> | ME-0-IB-016904 |
| 13 | *F* | Allium schoenoprasum L. | XX-0-IB-000292 |
| 14 | *A* | Allium sphaerocephalon L.
<i>W/IT-Vinschgau - Laas-Untertröger-900m</i> | IT-0-IB-018571 |
| 15 | *P* | Allium victorialis L. | AT-0-IB-000301 |

Apiaceae

- | | | | |
|----|-----|--|--------------------|
| 16 | *A* | Angelica brevicaulis (Rupr.) B.Fedtsch.
<i>W/KZ-Tien-Shan, Almatiner Naturschutzgebiet</i> | KZ-0-IB-017550 |
| 17 | *A* | Athamanta cretensis L.
<i>W/AT-Tirol-Hahntennjoch-1800m</i> | AT-0-IB-021371 |
| 18 | *A* | Athamanta turbith (L.) Brot.
<i>W/AL-Bicaj</i> | AL-0-IB-017566 |
| 19 | *F* | Chaerophyllum villarsii W.D.J.Koch
<i>W/AT-Tirol-Nordtirol-Karwendel-Nordkette (Inntalkette)-Höttinger Graben unter- und oberhalb der Höttinger Alm-11°22'00"E-47°17'55"N, 1100-1700m</i> | AT-0-IB-018727 |
| 20 | *F* | Conium maculatum L. | XX-0-IB-000490 |
| 21 | *F* | Coriandrum sativum L. 'Cilantro' cult. | XX-0-BONN-2148 |
| 22 | *A* | Eryngium bourgatii Gouan | XX-0-IB-006449 |
| 23 | *A* | Ferula glaucopruinosa (Rech.f.) Akhani
<i>W/IR-1570m</i> | IR-0-IB-017551 |
| 24 | *A* | Laserpitium siler L.
<i>W/CH</i> | CH-0-IB-024657 |
| 25 | *A* | Orlaya grandiflora (L.) Hoffm. | XX-0-IB-000542 |
| 26 | *F* | Petroselinum crispum (Mill.) Fuss . | XX-0-CAME-2014/146 |

Apocynaceae

27 *G* *Mandevilla laxa* (Ruiz & Pav.) Woodson XX-0-IB-018947

Asparagaceae

- 28 *F* *Anthericum ramosum* L. AT-0-IB-028554
W/AT/Tirol: Nordtirol - Karwendel: Nordkette (Inntalkette) - Thaur-Ochsner - 11°28'10.7"E - 47°18'34.7"N, 1214 m
- 29 *A* *Brodiaea coronaria* (Salisb.) Jeps. XX-0-IB-008541
- 30 *G* *Drimia maritima* (L.) Stearn ES-1-IB-020751
- 31 *A* *Hastingsia alba* (Durand) S.Watson US-0-GENT-20042011
W/US-California-Siskiyou Co.-West of Weed-Stuarts Spring Road near junction with Old Highway 99- 976m
- 32 *A* *Liriope spicata* Lour. XX-0-IB-022378
- 33 *A* *Manfreda virginica* (L.) Salisb. ex Rose US-0-IB-000067
W/US-Missouri-Franklin Co.
- 34 *F* *Muscari neglectum* Guss. ex Ten. XX-0-IB-021536
- 35 *F* *Ornithogalum umbellatum* L. XX-0-IB-021577
- 36 *A* *Prospero autumnale* (L.) Speta IT-0-IB-003667
W/IT-Sardinien-Monte Limbara-1000m

Asphodelaceae

- 37 *F* *Asphodeline lutea* (L.) Rchb. XX-0-IB-000708
- 38 *A* *Asphodeline taurica* (Pall.) Endl. XX-0-IB-000710
- 39 *F* *Asphodelus albus* Mill. XX-0-IB-000712

Asteraceae

- 40 *A* *Achillea clavennae* L. AT-0-WU-AST100772
W/AT-Niederösterreich-Ötscher-1830m
- 41 *P* *Achillea clusiana* Tausch XX-0-IB-022011
- 42 *A* *Achillea crithmifolia* Waldst. & Kit. AL-0-IB-016788
W/AL-southern edge of Shija gorge surroundings of Bicaj-1500m
- 43 *A* *Achillea holosericea* Sm. GR-0-IB-000755
W/GR-2100m
- 44 *F* *Achillea macrophylla* L. IT-0-M-2001/0802
W/IT-V. Gressoney-V. Giassit, 1700m
- 45 *A* *Antennaria dioica* (L.) Gaertn. XX-0-IB-000779
- 46 *A* *Antennaria media* Greene CA-0-IB-000781
W/CA-British Columbia
- 47 *F* *Arnica chamissonis* Less. XX-0-STGAL-263/2005
- 48 *F* *Artemisia absinthium* L. XX-0-IB-000795
- 49 *A* *Aster alpinus* L. XX-0-IB-007864
- 50 *A* *Aster alpinus* L. var. *serpentimontanus* (Tamamsch.) Ling NP-0-IB-021295
W/NP-Samdo-4200m
- 51 *A* *Aster diplostephioides* (DC.) Benth. ex C.B.Clarke XX-0-IB-026925
- 52 *A* *Aster himalaicus* C.B.Clarke XX-0-IB-000816
- 53 *A* *Berkheya macrocephala* J.M.Wood. XX-0-HAL-13439
- 54 *A* *Bupthalmum salicifolium* L. AT-0-IB-014188
W/AT-Tirol-Petttau-620m

55	*F*	Carlina vulgaris L. <i>W/AT-Tirol-Nordtirol-Karwendel-Zirl-Eigenhofen-11°12'51.6"E-47°16'50.8"N, 640 m</i>	AT-0-IB-018753
56	*A*	Carthamus pinnatus Desf.	XX-0-IB-000841
57	*A*	Catananche caespitosa Desf.	XX-0-IB-000847
58	*F*	Centaurea benedicta (L.) L.	XX-0-IB-000887
59	*A*	Centaurea ıpecensis Rech.f. <i>W/ME-Prokletije Mts-Gusinje saddle east of Zla Kolata- E 19°53'51", N 42°29'8"- 2470m</i>	ME-0-IB-028091
60	*F*	Centaurea jacea L. <i>W/AT-Tirol-Nordtirol-Karwendel-Nordkette, Planötzenhof-Höttinger Graben 11°22'11"E; 47°16'57"N; 900m</i>	AT-0-IB-018755
61	*P*	Centaurea pseudophrygia C.A.Mey. <i>In/AT-Tirol-Mt.Patscherkofel-2000m</i>	AT-0-IB-000864
62	*F*	Centaurea scabiosa L. <i>W/AT-Tirol-Nordtirol-Karwendel-Nordkette (Inntalkette)-Zirl, Fuß der Martinswand 11°16'40"E 47°16'05"N 700m</i>	AT-0-IB-018754
63	*A*	Centaurea stoebe Tausch <i>W/IT-Oberer Vinschgau-Mals-1000m</i>	IT-0-IB-014508
64	*A*	Chuquiraga aurea Skottsbo. <i>W/AR-Patagonia-Santa Cruz Province</i>	AR-0-IB-000876
65	*P*	Cirsium heterophyllum (L.) Hill <i>In/AT-Tirol-Mt.Patscherkofel-2000m</i>	AT-0-IB-000883
66	*F*	Cirsium purpuratum (Maxim.) Matsum. <i>W/JP-Iida-shi-Nagano-Pref., N35°28', E138°00', 1369m</i>	JP-0-FRP-27151
67	*A*	Cotula socialis Hilliard	ZA-0-TEBLI-01145
68	*F*	Cyanus segetum Hill	XX-0-IB-000858
69	*A*	Erigeron altaicus Popov	XX-0-IB-024053
70	*A*	Erigeron glacialis (Nutt.) A.Nelson	XX-0-IB-000924
71	*A*	Erigeron grandiflorus Hook.	XX-0-TUEB-00382
72	*F*	Eupatorium cannabinum L. <i>W/AT-Tirol: Nordtirol - westliches Mittelgebirge - westlich Landeskrankenhaus Natters - 11°21'53.32"E - 47°14'23.18"N, 852m</i>	AT-0-IB-030012
73	*A*	Gaillardia aristata Pursh <i>W/US-Montana-Ninemile Prarie-113°32'59"W-46°56'59"N, 1095m (21.07.2018)</i>	US-0-IB-022898
74	*A*	Galatella linosyris (L.) Rchb.f.	XX-0-IB-024623
75	*F*	Grindelia robusta Nutt.	XX-0-DATH-3767
76	*A*	Helichrysum arenarium (L.) Moench <i>W/KZ- S of Aktobe-along rout A27 Aktobe-Alga-at western shore of big storage lake-250m</i>	KZ-0-IB-016986
77	*A*	Heteropappus altaicus (Willd.) Novopokr. <i>W/RU- Altai Republic, Ongudaysky District, Ursul River, floodplain meadow, 723m</i>	RU-0-MW-2017-408
78	*A*	Hieracium intybaceum Hoppe <i>W/IT-Lombardia - Alpi Retiche occidentali - Corna Mara - 9°55'28`` E - 46°12' 50`` N, 2155 m s.m.</i>	IT-0-IB-028367
79	*A*	Inula ensifolia L.	XX-0-IB-009345
80	*F*	Inula helenium L.	XX-0-IB-000983
81	*A*	Inula oculus-christi L. <i>W/MN-Durmitor nahe Boricje</i>	MN-0-IB-016595
82	*A*	Inula rhizocephala Schrenk <i>W/TJ-Gorno-Badakhshan-Western Pamir-S of the Koytezek pass (Pamir Highway)-E 72°46'38",N 37°27'33"- 4526m</i>	TJ-0-IB-021154
83	*A*	Lactuca perennis L. <i>W/IT-Südtirol-Vinschgau-Großboden-10°42'18" E-46°37'53" N, 1445m (06.08.2019)</i>	IT-0-IB-014373

84	*A*	Leontodon incanus (L.) Schrank <i>W/AT-Tirol-Zirl</i>	AT-0-IB-016941
85	*A*	Leontopodium alpinum Colm. ex Cass. <i>W/AT-Tirol-Stubaier Alpen-Regensburger Hütte</i>	XX-0-IB-007593
86	*P*	Leontopodium alpinum Colm. ex Cass. <i>WAG/CH-Valais-2800m</i>	CH-0-IB-021691
87	*A*	Leontopodium conglobatum (Turcz.) Hand.-Mazz.	XX-0-IB-001011
88	*A*	Leontopodium jacotianum Beauverd	XX-0-IB-007898
89	*A*	Leontopodium japonicum (Thunb.) Miq. <i>W/CN-Daba Shan-Langao-1900m</i>	CN-0-IB-010705
90	*A*	Leontopodium kurilense Takeda <i>W/NP-Nepal-Samdo-3800m</i>	NP-0-IB-025993
91	*F*	Leucanthemum vulgare (Vaill.) Lam. <i>W/AT-Kärnten-Drautal-Grafenstein-Saager-14°29'38.51"E-46°34'58.50"N, 500-600m</i>	AT-0-IB-018747
92	*A*	Psephellus caucasicus (Sosn.) Greuter <i>W/RU-Karachayevo-Cherkessiya, Bermamyt Plateau, 2500 m, 43.42 N 42.26 E.</i>	RU-0-GB-2011-1744
93	*A*	Raoulia australis Hook.f. ex Raoul <i>W/NZ-Mt.Cook-800m</i>	NZ-0-IB-001049
94	*A*	Rhaponticum coniferum (L.) Greuter <i>W/FR-Perpignan</i>	FR-0-IB-001019
95	*A*	Santolina pinnata Viv. <i>W/ES-Pyrenäen</i>	ES-0-IB-026378
96	*A*	Scorzonera austriaca Willd. <i>W/AT-Niederösterreich-Eichkogel-500m</i>	AT-0-IB-001067
97	*A*	Scorzonera hispanica L.	XX-0-IB-001068
98	*G*	Senecio serpens G.D.Rowley	XX-0-IB-001102
99	*A*	Sericocarpus linifolius Britton, Sterns & Poggenb. <i>W/US-SC</i>	US-0-IB-026498
100	*F*	Silybum marianum (L.) Gaertn.	XX-0-IB-001106
101	*F*	Tanacetum parthenium (L.) Sch.Bip.	XX-0-IB-001122
102	*F*	Tanacetum vulgare L.	XX-0-IB-001126
103	*F*	Telekia speciosa (Schreb.) Baumg.	RO-0-IAGB20171993W
104	*A*	Telekia speciosissima DC.	RAMB-50908
105	*A*	Tetraneuris acaulis (Pursh) Greene <i>W/US-Colorado-Rio Blanco Co.-2591m</i>	US-0-IB-18329
106	*A*	Tonestus lyallii (A.Gray) A.Nelson	XX-0-IB-007138
107	*A*	Tripleurospermum caucasicum (Willd.) Hayek <i>W/GE-Mestia</i>	GE-0-IB-021054

Bignoniaceae

108	*A*	Incarvillea compacta Maxim.	XX-0-IB-007478
109	*F*	Incarvillea olgae Regel	XX-0-GIESS-0-U-864

Boraginaceae

110	*F*	Cynoglossum officinale L. <i>W/AT-Tirol-Nordtirol-Karwendel-Nordkette (Inntalkette), Zirl, Fuß der Martinswand-11°16'40"E-47°16'05"N, 700m</i>	AT-0-IB-018771
111	*A*	Moltkia x intermedia (Froebel) J.W.Ingram	XX-0-IB-001303

112	*A*	Moltkia petraea (Tratt.) Griseb. <i>W/AL-Theth-900m</i>	AL-0-IB-001301
113	*A*	Onosma taurica Willd.	XX-0-IB-016886
114	*A*	Paramoltkia doerfleri (Wettst.) Greuter & Burdet	XX-0-IB-001299

Brassicaceae

115	*A*	Aethionema grandiflorum Boiss. et Hohen. <i>W/IR-Ghazvin-2060m</i>	IR-0-IB-001339
116	*A*	Aethionema saxatile (L.) R.Br.	XX-0-IB-012748
117	*A*	Alyssoides utriculata (L.) Medik.	XX-0-IB-018091
118	*A*	Alyssum scardicum Wettst. <i>W/ME-Prokletije-Mt. Kerrshat e Mdhaj-Mt. Marjashi/Marijas</i>	ME-0-IB-016821
119	*A*	Arabis purpurea Sm.	XX-0-IB-027663
120	*A*	Aubrieta columnae Guss. subsp. croatica (Schott, Nyman & Kotschy) Mattf. <i>W/BA-Dinara-from the village Gubin to Mt. Veliki Troglav-1900m</i>	BA-0-IB-017115
121	*A*	Aurinia saxatilis (L.) Desv.	XX-0-IB-001384
122	*A*	Boechera holboellii (Hornem.) Á.Löve & D.Löve	XX-0-GZU-13 420731
123	*F*	Brassica nigra (L.) K.Koch	XX-0-IB-001389
124	*F*	Camelina sativa (L.) Crantz	XX-0-IB-015191
125	*A*	Coluteocarpus vesicaria (L.) Holmboe <i>W/TR-Paladoken-2800m</i>	TR-0-IB-001402
126	*A*	Draba aizoides L.	XX-0-IB-001410
127	*A*	Draba athoa (Griseb.) Boiss. <i>W/ME-Prokletije-Kuci-Brezovica - Mt. Zijevo</i>	ME-0-IB-001413
128	*A*	Draba rigida Willd. var. bryoides (DC.) Boiss. <i>W/RU-Kaukasus-Kabardino Balkaria-2600m</i>	RU-0-IB-008929
129	*A*	Draba rosularis Boiss. <i>W/TR-Anatolien-Mount Tendürek-2400m</i>	TR-0-IB-001430
130	*A*	Draba sakurarii Makino	XX-0-IB-027664
131	*A*	Erysimum decumbens (Schleich.ex Willd.) Dennst. <i>W/FR-Garonne (Haute), Col de Mente 1500m, BG Paris (MR,2017)</i>	XX-1987/698
132	*A*	Erysimum nivale (Greene) Rydb. <i>W/US-Colorado-3600m</i>	US-0-IB-001438
133	*F*	Erysimum rhaeticum (Schleich. ex Hornem.) DC. <i>W/AT-Tirol-Nordtirol-Oberes Gericht,Nauders-10° 30'51.6"E-46°52'45.6"N</i>	AT-0-IB-021638
134	*A*	Fibigia clypeata (L.) Medik.	XX-0-IB-001443
135	*F*	Iberis amara L.	XX-0-IB-019822
136	*F*	Isatis tinctoria L.	XX-0-IB-001458
137	*F*	Lunaria rediviva L. <i>W/DE-Bayern-Bei Flintsbach am Inn-Petersberg-12°7'30"-47°42'39"N</i>	DE-0-IB-018786
138	*A*	Matthiola montana Boiss. <i>W/TR-Kaz-Dag-1700m</i>	TR-0-IB-001474
139	*A*	Ptilotrichum spinosum Boiss. <i>W/ES-Sierra Nevada-2400m</i>	ES-0-IB-017953
140	*F*	Raphanus sativus L. var. niger (Mill.) J.Kern.	XX-0-IB-028993
141	*A*	Schivereckia podolica (Besser) Andr. ex DC.	XX-0-IB-001490
142	*F*	Sinapis alba L.	XX-0-KIEL-P-136938

143 *A* Thlaspi macranthum N.Busch XX-0-IB-027659

Cactaceae

144 *G* Frailea phaeodisca (Speg.) Backeb. & F.M.Knuth XX-0-IB-017015
145 *G* Frailea schilinzkyana (F.Haage ex K.Schum.) Britton & Rose XX-0-IB-001695
146 *G* Parodia ayopayana Cárdenas XX-0-IB-001999
147 *G* Parodia leninghausii F.H.Brandt XX-0-IB-006940
148 *G* Parodia mueller-melchersii (Fric ex Backeb.) N.P. Taylor XX-0-IB-017016

Campanulaceae

149 *A* Campanula betulifolia K.Koch XX-0-IB-022553
150 *F* Campanula persicifolia L. AT-0-IB-018794
W/AT-Kärnten-Drautal-Grafenstein, Saager 14°29'38.51"E 46°34'58.50"N 500-600m
151 *A* Campanula sosnowskyi Kharadze XX-0-IB-027173
152 *P* Campanula thyrsoides L. AT-0-IB-002218
153 *A* Edraianthus graminifolius (L.) A.DC. ME-0-IB-016800
W/ME-Prokletije-Valley Mecukomlje-Mt. Kom Kucki
154 *A* Edraianthus parnassicus (Boiss. & Spruner) Halácsy XX-0-IB-002237
155 *A* Edraianthus pumilio (Port. ex Schult.) A.DC. XX-0-IB-002238
156 *A* Lobelia siphilitica L. XX-0-IB-029409
W/USA, MI, Kalamazoo county, Mesic Southern Forest, Site: Kellogg Biological Station Experiment.Forest / East Lansing 2019
157 *A* Phyteuma scheuchzeri All. XX-0-IB-002260
158 *P* Phyteuma spicatum L. AT-0-IB-002262

Cannabaceae

159 *F* Cannabis sativa s.l. L. XX-0-IB-004148

Caprifoliaceae

160 *F* Cephalaria gigantea (Ledeb.) Bobrov XX-0-IB-003007
161 *A* Morina persica L. AL-0-IB-022567
W/AL-Ostrovica-Mts.-1100m
162 *A* Patrinia intermedia (Hornem.) Roem. & Schult. KZ-0-IB-006014
W/KZ-Almaty-Tien Shan-Trans-Ili Alatau-between Medeu and skiing resort Shymbulak-2100m
163 *A* Scabiosa canescens Waldst. & Kit. BA-0-IB-014594
W/BA-Cvrsnica-Mt.Plocno-1500m
164 *A* Scabiosa crenata Cirillo AL-0-IB-017607
W/AL-Bicaj
165 *A* Scabiosa graminifolia L. BA-0-IB-014593
W/BA-Dinara-Mt. Veliki Troglav-1900m
166 *A* Valeriana salianca All. FR-0-IB-007597
W/FR-Westalpen-2000m

Caryophyllaceae

167 *F* Agrostemma githago L. XX-0-IB-002309
168 *A* Cerastium carinthiacum Vest IT-0-IB-016860
W/IT-Trentino-Alto Adige: Trento-northern surroundings of Passo di San Pellegrino- Lom Piccol-2457m-E 46.39944444,N11.79888889- scree slopes-limestone

169	*A*	Cerastium decalvans Schloss. & Vuk. <i>W/AL-along the path from Dragobi to the saddle W of Maja Hekuraves</i>	AL-0-IB-016895
170	*A*	Cerastium grandiflorum Waldst. & Kit. <i>W/ME-Prokletije-Kuci-Brezovica-Mt.Zijevo-786m</i>	ME-0-IB-016897
171	*A*	Cerastium moesiicum Friv. <i>W/ME-Komovi - NW of Mt. Kom Vasojevicki-2200m</i>	ME-0-IB-016898
172	*P*	Dianthus alpinus L.	XX-0-IB-002341
173	*A*	Dianthus angrenicus Vved. <i>W/KZ-Almaty-Tien Shan-Trans-Ili Alatau between Medeu and skiing resort Shymbulak-2100m</i>	KZ-0-IB-018355
174	*A*	Dianthus carthusianorum L. subsp. sanguineus (Vis.) Hegi <i>W/MN-Visitor- Prokletije</i>	MN-0-IB-016759
175	*A*	Dianthus cretaceus Adam <i>W/GE-Samtskhe-Javakheti-2050m</i>	GE-0-IB-021051
176	*A*	Dianthus hyssopifolius L. <i>W/IT-Mt.Grappa-1300m</i>	XX-0-IB-024604
177	*A*	Dianthus integer Vis. <i>W/BA-Bosna, Dinara: from the village Gubin to Mt. Veliki Troglav-1500m, Limestone</i>	BA-0-IB-014869
178	*A*	Dianthus myrtinervius Griseb. <i>W/GR-MT.Ossa-1600m</i>	GR-0-IB-017486
179	*P*	Dianthus pavonius Tausch	XX-0-IB-002372
180	*P*	Dianthus superbus L. subsp. alpestris Kablík. ex Celak.	XX-0-IB-017406
181	*A*	Eremogone capillaris (Poir.) Fenzl var. americana (Maguire) R.L.Hartm. & Rabeler <i>W/US-Montana-Mt. Reynolds-2450m</i>	US-0-IB-002314
182	*A*	Eremogone ledebouriana (Fenzl) Ikonn.	XX-0-IB-002321
183	*A*	Eremogone longifolia (M.Bieb.) Fenzl	XX-0-IB-021071
184	*A*	Eremogone pseudacantholimon (Bornm.) Holub <i>W/TR-Palandok, 2300 m</i>	TR-0-TUEB-4438
185	*F*	Gypsophila imbricata Rupr. <i>W/RU-Caucasus-Kabardino Balkaria-2600m</i>	RU-0-IB-007558
186	*F*	Gypsophila paniculata L.	XX-0-HAL-890
187	*F*	Lychnis viscaria L. <i>W/AT-Tirol-Nordtirol-Stubaier Alpen-Westliches Mittelgebirge-Axams, Zifres 11°15'45.9"E 47°14'31.9"N 775m</i>	AT-0-IB-018816
188	*A*	Minuartia kashmirica (Edgew. & Hook. f.) Mattf. <i>W/NP-Langtang</i>	NP-0-IB-002432
189	*A*	Minuartia laricifolia (L.) Schinz & Thell.	XX-0-IB-002434
190	*A*	Minuartia pestalozzae Mattf. <i>W/TR-Dedegol Dag-2000m</i>	TR-0-IB-002436
191	*A*	Minuartia pinifolia (M.Bieb.) Graebn.	XX-0-IB-027852
192	*A*	Paronychia kapela (Hacq.) A.Kern. <i>W/IT-Aostatal-2300m</i>	IT-0-IB-011525
193	*A*	Saponaria cyprea Boiss. <i>W/CY-Trodos Gebirge-1200m</i>	CY-0-IB-002455
194	*F*	Saponaria officinalis L.	XX-0-IB-002461
195	*A*	Saponaria x sündermannii hort.	XX-0-IB-002466
196	*A*	Silene argaea Fisch. & C.A.Mey. <i>W/TR-Ericas Dag-3200 m</i>	TR-0-IB-002475

- 197 *A* *Silene parnassica* Boiss. & Spruner AL-0-IB-002492
W/AL-Bicaj
- 198 *A* *Silene pygmaea* Fenzl GE-0-IB-016874
W/GE-Mtskheti-Mtianeti-Greater Caucasus-valley of river Terg
- 199 *A* *Silene saxifraga* L. IT-0-IB-028191
W/IT-Lombardia - Alpi Orobie - Pizzo di Porola - 10°0'44" E - 46°3'11" N, 1649 m s.m.
- 200 *A* *Silene schafta* S.G.Gmel. ex Fisch. & C.A.Mey. XX-0-IB-027056
- 201 *A* *Silene suecica* (Lodd.) Greuter & Burdet XX-0-IB-017927

Cistaceae

- 202 *A* *Cistus creticus* L. AL-0-IB-002548
W/AL - Tomorr
- 203 *F* *Cistus laurifolius* L. XX-0-IB-002546
- 204 *A* *Helianthemum apenninum* (L.) Mill. FR-0-IB-002552
W/FR-SW-Alps
- 205 *A* *Helianthemum hirtum* (L.) Mill. ES-0-IB-002555
W/ES-Sierra-Nevada-2500m
- 206 *F* *Helianthemum nummularium* (L.) Mill. subsp. *obscurum* (Celak.) Holub AT-0-IB-024572
W/AT-Tirol-Nordtirol-Karwendel-Nordkette (Inntalkette)-Zirl, Weg zur Ruine Fragenstein-11°14'27.87"E-47°16'39.12"N, 680m
- 207 *A* *Helianthemum violaceum* (Cav.) Pers. ES-0-BERN-1989/333 W S
W/ES-Andalusien, Jaén, Sierra del Segura, 1050m

Crassulaceae

- 208 *A* *Chiastophyllum oppositifolium* (Ledeb.) A.Berger XX-0-IB-026267
- 209 *A* *Orostachys thyrsiflora* Fisch. RU-0-IB-016980
W/RU-Altai-Chagan Uzun
- 210 *A* *Rosularia serrata* (L.) A.Berger TR-0-IB-002790
W/TR-750m
- 211 *A* *Sedum spurium* M.Bieb. XX-0-IB-002844
- 212 *A* *Sedum ternatum* Michx. XX-0-IB-002851

Cyperaceae

- 213 *A* *Carex bicolor* All. CH0G-20190084
W/CH-Grisons 2300 m
- 214 *A* *Carex brachystachys* Schrank AT-0-IB-023832
W/AT/Tirol: Nordtirol - Karwendel - Hochnissel, entlang des markierten Wegs - 11°37'50"E - 47°21'37"N, 1650 m s.m. (24.11.2018)
- 215 *A* *Carex capillaris* L. AT-0-IB-021313
W/AT-Tirol-Stubaier Alpen-Südgrat des Roten Kopfs-Roter Kopf-Kesselspitze 11°21'29"E,47°5'53"N-2400-2700m
- 216 *A* *Carex muskingumensis* Schwein. XX-0-IB-002950
- 217 *F* *Carex paniculata* L. AT-0-GZU-16 1049
W/AT-Lavantaler Alpen-Seetaler Alpen-Zirbitzkogelgebiet-Ochsenboden-ca. 1,2 km N des Zirbitzkogel-Gipfels-N47.082°-E14.563°, 1980 m
- 218 *A* *Carex sempervirens* Vill. DE-0-IB-002963
W/DE-Schwäbische Alb-1800m
- 219 *A* *Eriophorum vaginatum* L. CH-0-Z-20171140
W/CH- Glarus Süd, GL; 1999 m asl

Euphorbiaceae

220 *F* Ricinus communis L. XX-0-IB-003223

Fabaceae

221 *A* Anthyllis montana L. subsp. jaquinii (Rchb. f.) Rohlena XX-0-IB-003234

222 *A* Anthyllis vulneraria L. XX-0-IB-006518

223 *A* Argyrolobium zanonii (Turra) P.W.Ball FR-0-IB-003239
W/FR-SW-Alps-1800m

224 *F* Astragalus alopecurus Pall. XX-0-IB-018880

225 *A* Coronilla minima L. XX-0-IB-003283

226 *A* Oxytropis campestris (L.) DC. AT-0-IB-003364
W/AT-Nordtirol-Stubaier Alpen-Rotkopf-Kesselspitze- N 47°5'53", O 11°21'29"-2400m

227 *A* Oxytropis halleri Koch AT-0-IB-003368
W/AT-Nauders-2000m

228 *P* Trifolium badium Schreb. AT-0-IB-003399
In/AT-Tirol-Mt.Patscherkofel-2000m

229 *F* Trigonella foenum-graecum L. XX-0-IB-003414

Gentianaceae

230 *F* Gentiana asclepiadea L. AT-0-IB-018898
W/AT-N-Kalkalpen-600m

231 *A* Gentiana cruciata L. SK-0-IB-022691
W/SK-Kleine Karpaten-Bartalová

232 *A* Gentiana dinarica Beck XX-0-IB-003480

233 *A* Gentiana lutea L. XX-0-IB-021573

234 *A* Gentiana occidentalis Jakow. FR-0-IB-003490
W/FR-Aude

235 *A* Gentiana olivieri Griseb. TJ-0-IB-025666
W/TJ-Gorno-Badakhshan-Western Pamir-S of Khorugh,E 71°35'54", N 37°28'16", 2138m

236 *P* Gentiana purpurea L. AT-0-IB-003499

237 *A* Gentiana siphonantha Maxim.ex Kuzn. CN-0-M-1993/2566
W/CN- Sichuan, Mt.Emei, Jiuzhaigon area, 2700 m

Geraniaceae

238 *A* Geranium dalmaticum (Beck) Rech.f. XX-0-IB-003527

239 *G* Pelargonium alternans J.C. Wendl. ZA-0-BR-19800401

Gesneriaceae

240 *A* Ramonda serbica Pancic AL-0-IB-003583
W/AL-Bicaj-1500m

Hypericaceae

241 *A* Hypericum coris L. FR-0-P-2017g022
W/FR-Lucéram (06)-Bon Cuor-778m

242 *A* Hypericum montbretii Spach GR-0-IB-027912
W/GR-Thrakien-Kallithea-900m

- 243 *A* Hypericum olympicum L. GR-0-IB-002585
W/GR-Thessalien-Nomos Magnisias-Pilion Gebirge-1300m
- 244 *A* Hypericum orientale L. RU-0-IB-021191
W/RU-Kaukasus-2000m
- 245 *A* Hypericum tetrapterum Fr. CZ-0-PLZEN-2569-14-10
W/CZ-Hrdiborice, Hrdiborické rybníky ponds, coll. 26.10.2014, T. Pes, J. Pesová

Iridaceae

- 246 *A* Gladiolus illyricus W.D.J.Koch SI-1-LJU-N- 018-834
W/SL-Rodne na Cerkljanskem, 2018, L. & I. D.
- 247 *A* Iris arenaria Waldst. & Kit. AT-0-KL-2012/765
W/AT- Lower Austria, Weinviertel
- 248 *A* Iris hookeri Penny ex G. Don CA-0-BONN-36944
W/CA- Quebec: MRC Minganie: Havre-Saint-Pierre, Grand Point.Tourbiere, ca. 1m, 50°12'47"N, 63°26'38"W
- 249 *A* Iris paradoxa Steven f. atrata XX-0-IB-022559
- 250 *F* Iris sibirica L. AT-0-IB-003740
W/AT-Tirol-Zirl- 600m
- 251 *A* Iris vicaria Vved. XX-0-IB-018884
- 252 *A* Sisyrinchium macrocarpum Hieron. XX-0-GZU-13420742
- 253 *A* Sisyrinchium montanum Greene var. crebrum Fernald XX-0-IB-003765

Juncaceae

- 254 *F* Luzula luzuloides (Lam.) Dandy & Wilmott AT-0-IB-028551
W/AT/Tirol: Nordtirol-Stubaier Alpen: Westliches Mittelgebirge-Richtung Kemater Alm- 11°15'45.43"E- 47°10'46.95"N, 1620 m
- 255 *F* Luzula sylvatica (Huds.) Gaudin subsp. sieberi (Tausch) K.Richt. AT-0-IB-018919
W/AT-Tirol-Nordtirol-Karwendel-Nordkette (Inntalkette)-Höttinger Graben unter- und oberhalb der Höttinger Alm-11°22'00"E-47°17'55"N, 1100-1700m

Lamiaceae

- 256 *F* Ballota nigra L. IT-0-SIENA-02062
W/IT-Quercegrossa-Siena-2015 (Luglio 2017)
- 257 *F* Betonica macrantha C. Koch. GE-0-BONN-18496
W/GE- Region Ratscha, Straße zwischen Schovi und Gurshevi, Weg zum Mamisoni-Paß, 1900 m, 42°40.940` N, 43°43.906` O,
- 258 *F* Betonica officinalis L. XX-0-IB-003937
- 259 *F* Clinopodium vulgare L. AT-0-IB-018938
W/AT-Tirol-Nordtirol-Karwendel-Nordkette (Inntalkette)-Innsbruck-Planötzenhof-Höttinger Graben-11°22'11"E-47°16'57"N, 900m
- 260 *A* Dracocephalum argunense Fisch. ex Rchb. XX-0-IB-027098
- 261 *A* Dracocephalum austriacum L. AT-0-IB-003810
W/AT-Niederösterreich-Hainburg-200m
- 262 *A* Dracocephalum nutans L. KZ-0-FRP-22498
W/KZ-North Tian Shan-Ama Ata-1600-1800m
- 263 *F* Galeopsis segetum Neck. XX-0-IB-003823
- 264 *F* Hyssopus officinalis L. XX-0-IB-003827
- 265 *A* Hyssopus seravschanicus (Dubj.) Pazij TJ-0-GZU-08 700914
W/TJ-Pamir Gebirge-Schugnan Range-Darwas, 2600m
- 266 *F* Marrubium vulgare L. XX-0-IB-003843
- 267 *F* Mentha xpiperita L. XX-0-IB-003849

268	*F*	Ocimum basilicum L. `Genovese` cult.	XX-0-IB-003865
269	*A*	Origanum vulgare L. <i>W/AT-Tirol-Zirl-620m</i>	AT-0-IB-014269
270	*F*	Prunella vulgaris L. <i>W/AT-Tirol-Nordtirol-Karwendel-Nordkette (Inntalkette)Zirl-Fuß der Martinswand-11°16'40"E- 47°16'05"N, 700m</i>	AT-0-IB-021496
271	*A*	Salvia cyanescens Boiss. & Balansa <i>W/TR</i>	TR-0-IB-017812
272	*F*	Salvia glutinosa L. <i>W/AT-Tirol-Nordtirol-Karwendel-Nordkette (Inntalkette)Zirl-Fuß der Martinswand-11°16'40"E- 47°16'05"N, 700 m</i>	AT-0-IB-018975
273	*A*	Salvia jurisicii Kosanin	XX-0-PRAZ-1996.00537
274	*A*	Salvia nutans L. <i>W/RU- Voroneshskaya Oblast-Bogutshar Raion, neben dem Dorf Krasnogorovka, ca. 220 km SE von Voronesh</i>	RU-0-OSN-2018-1651
275	*F*	Salvia officinalis L.	XX-0-IB-003900
276	*F*	Salvia pratensis L. <i>W/AT-Kärnten-Drautal-Grafenstein, Saager-14°29'38.51"E-46°34'58.50"N, 500-600m</i>	AT-0-IB-018973
277	*F*	Salvia sclarea L.	XX-0-IB-003893
278	*A*	Sideritis hyssopifolia L. <i>W/FR-Occitanie - Midi Pyreneés - Gavarnie, Oulettes d'Ossoue - 0° 6' 45" W - 42° 45' 50" N - 1950 m s.m. (30.10.2017)</i>	FR-0-IB-022532
279	*A*	Sideritis scardica Griseb. <i>W/GR-Timfi-Micro Pagigo-Raitovoli</i>	GR-0-IB-016641
280	*F*	Sideritis syriaca L.	XX-0-IB-015249
281	*A*	Teucrium botrys L.	XX-0-IB-024629
282	*A*	Teucrium capitatum L. <i>W/GR-Macedonia-Edhessa-700m</i>	GR-0-IB-003942
283	*A*	Teucrium chamaedrys L. <i>W/AT-Tirol-Zirl-620m</i>	AT-0-IB-014290
284	*A*	Teucrium flavum L. <i>W/AL-Theth-900m</i>	AL-0-IB-003945
285	*A*	Teucrium orientale L. <i>W/GE-Samtskhe-Javakheti, between Borjomi and Bakuriani, near Tsagveri, 41°48,334' N, 43°28.648' E, app. 1000m</i>	GE-0-M-2012/2456

Liliaceae

286	*A*	Fritillaria ehrhartii Boiss. & Orph.	XX-0-IB-016929
287	*A*	Fritillaria messanensis Raf. <i>W/GR- MT. Olymp</i>	GR-0-IB-027546
288	*P*	Lilium martagon L.	XX-0-IB-027539
289	*A*	Lilium regale E.H.Wilson	XX-0-IB-008041

Linaceae

290	*A*	Linum campanulatum L.	XX-0-IB-007318
291	*A*	Linum capitatum Kit. ex Schult. <i>W/BA-Dinara-from the village Gubin to Mt. Veliki Troglav-1800m</i>	BA-0-IB-016827
292	*A*	Linum lewisii Pursh <i>W/CA-British Columbia</i>	CA-0-IB-007585
293	*F*	Linum perenne L.	XX-0-IB-018979

- 294 *A* *Linum suffruticosum* L. FR-0-IB-004046
W/FR-Crete de Montanari-1000m
- 295 *F* *Linum usitatissimum* L. XX-0-IB-004055

Lythraceae

- 296 *A* *Lythrum salicaria* L. XX-0-IB-004067

Malvaceae

- 297 *F* *Althaea officinalis* L. HR-0-IB-021647
W/HR/Slavonija - W surroundings of Osijek - Cepinski Martinci - 18°28'24"E - 45°30'54"N, 90 m s.m. (08.09.2018)
- 298 *F* *Hibiscus palustris* L. XX-0-IB-006535
- 299 *F* *Malva alcea* L. AT-0-IB-024549
W/AT/Tirol: Nordtirol - Stubai Alpen: Westliches Mittelgebirge - Inzing, westlich Giggelberg - 11°11'13.11"E - 47°15'57.32"N, 820 m

Montiaceae

- 300 *A* *Montiopsis umbellata* (Ruiz & Pav.) D.I.Ford XX-0-Z-20180248

Onagraceae

- 301 *A* *Epilobium dodonaei* Vill. XX-0-IB-004262
W/AT-Tirol
- 302 *F* *Oenothera biennis* L. AT-0-IB-018987
W/AT-Tirol-Nordtirol-Oberinntal-Zirl-südwestlich Eigenhofen-11°11'38.2"E-47°16'52.5"N, 600m

Paeoniaceae

- 303 *A* *Paeonia officinalis* L. IT-0-IB-004445
W/IT- Monte Baldo-1800m

Papaveraceae

- 304 *F* *Fumaria officinalis* L. XX-0-IB-003461
- 305 *A* *Meconopsis napaulensis* DC. XX-0-IB-025375
- 306 *P* *Meconopsis racemosa* Maxim. CN-0-IB-004473
W/CN-Napa Hai
- 307 *A* *Papaver alpinum* L. CH-0-Bern-2010/212
W/CH-Berner Oberland-Alpengarten Schynige Platte
- 308 *F* *Papaver somniferum* L. XX-0-IB-004497

Phrymaceae

- 309 *A* *Mimulus guttatus* DC. XX-0-IB-005745

Plantaginaceae

- 310 *F* *Digitalis lanata* Ehrh. XX-0-IB-005705
- 311 *A* *Digitalis obscura* L. XX-0-WU-0021950
W/ES-Sierra Nevada- Granada
- 312 *F* *Digitalis purpurea* L. XX-0-IB-005710
- 313 *A* *Erinus alpinus* L. XX-0-IB-005713
- 314 *A* *Globularia cordifolia* L. XX-0-IB-003594
- 315 *A* *Penstemon azureus* Benth. XX-0-GZU-12 210085

316	*A*	Penstemon menziesii Hook.	XX-0-IB-018262
317	*A*	Penstemon rupicola (Piper) Howell <i>W/US-Oregon-Linn Co.-1707m</i>	US-0-Jena-7997053
318	*A*	Penstemon utahensis Eastw. <i>W/US-Utha-Grand Co.-Moab parking area, 2090ft</i>	US-0-BONN-38598
319	*A*	Penstemon venustus Douglas ex Lindl.	XX-0-IB-008985
320	*A*	Penstemon virens Pennell ex Rydb. <i>W/US-Elbert Co., CO, 6650ft, 2027m</i>	US-0-IB-022395
321	*F*	Plantago lanceolata L. <i>W/AT-Tirol: Nordtirol - westliches Mittelgebirge - südlich Landeskrankenhaus Natters - 11°21'54.73"E - 47°14'20.32"N, 846m</i>	AT-0-IB-030031
322	*F*	Plantago major L.	XX-0-IB-004579
323	*A*	Plantago strictissima L. <i>W/IT-Oberer Vinschgau-Mals-1000m</i>	IT-0-IB-014278
324	*A*	Plantago subulata L. <i>W/ES-Sierra Nevada, 2200m</i>	ES-0-ER-2006-41
325	*F*	Veronica spicata L. <i>W/AT-Tirol-Nordtirol-Stubai Alpen-10°52'28"E-47°12'30"N, 800 m</i>	AT-0-IB-019003
326	*A*	Wulfenia carinthiaca Jacq. <i>W/ME-Prokletije-Mt. Kërrshat e Mdhaj - Mt. Marjashi/Marijas</i>	ME-0-IB-016811
327	*P*	Wulfenia carinthiaca Jacq. <i>W/AT-Kärnten-Karnische Alpen-Gartnerkofel</i>	AT-0-IB-005863

Plumbaginaceae

328	*A*	Acantholimon kotschyi (Jaub. & Spach) Boiss. <i>W/TR-Kütahya-1200m</i>	TR-0-IB-004595
329	*A*	Armeria alliacea (Cav.) Hoffmanns. & Link <i>W/IT-Monte Pietra di Corvo-Sassi Neri-1078m</i>	IT-0-GENT-19990597
330	*A*	Armeria canescens (Host) Boiss. <i>W/BA-Cvrsnica-Mt.Plocno-1000m</i>	BA-0-IB-014608
331	*F*	Armeria maritima (Mill.) Willd. <i>W/DE-Schleswig-Holstein, Insel Amrum, 2004, leg. Susanne Petersen</i>	DE-0-KIEL-2004 2869 - 10 - 55
332	*A*	Bukiniczia cabulica (Boiss.) Lincz. <i>W/PK-Swedish Expedition to Pakistan 1983, Acc: 2001-0334, CollNo: SEP 018</i>	PK-0-IB-019872
333	*A*	Goniolimon callicomum (C.A.Mey.) Boiss. <i>W/KZ</i>	KZ-0-IB-023849
334	*A*	Goniolimon cuspidatum Gamajun. <i>W/KG</i>	KG-0-IB-023848
335	*A*	Goniolimon speciosum (L.) Boiss. <i>W/RU-Tomsk region, Elovka, 2017</i>	RU-0-IB-021027
336	*A*	Limonium binervosum (G.E:Sm.) C.E.Salmon <i>W/FR</i>	FR-0-Z-20120277

Poaceae

337	*F*	Aegilops tauschii Coss.	XX-0-IB-021617
338	*F*	Avena sativa L.	XX-0-IB-004652

339	*A*	Bothriochloa ischaemum (L.) Keng <i>W/AT-Tirol-Zirl-620m</i>	AT-0-IB-014294
340	*F*	Bromus benekenii (Lange) Trimen <i>W/AT-Tirol: Nordtirol - Karwendel: Nordkette (Inntalkette) - Innsbruck, Allerheiligen - 11°21'00"E - 47°16'28"N, 830 m s.m. (8.10.2018)</i>	AT-0-IB-021957
341	*A*	Chrysopogon gryllus (L.) Trin.	M-1999/3074
342	*F*	Cleistogenes serotina (L.) Keng <i>W/AT/Tirol: Nordtirol - Mieminger Plateau - Steilhang zum Inn zur Hängebrücke + Locherboden oberhalb Infotafel über Flusssdynamik - 10,978705°E - 47,286166°N, 710 m s.m.</i>	AT-0-IB-028591
343	*A*	Erioneuron pilosum (Buckley) Nash <i>W/US-Colorado-Fremont Co.-1500m</i>	US-0-IB-004679
344	*A*	Festuca bosniaca Kumm.&Sendtn. <i>W/BA-Cvrsnica-Mt. Plocno-1900m</i>	BA-0-IB-016810
345	*A*	Festuca gautieri (Hack.) K.Richt. <i>W/ES-Catalonia-Berguedà-Saldes-Pedraforca-path under the Northface-1,6987 E, 42,2436 N, 1900m</i>	ES-0-IB-022531
346	*A*	Festuca pallens Host	XX-0-IB-023838
347	*A*	Festuca pseudodura Steud. <i>W/AT-Kärnten, Gurktaler Alpen, Rabenkofl</i>	AT-1-IB-017796
348	*A*	Helictotrichon sempervirens (Vill.) Pilg.	XX-0-IB-025051
349	*F*	Hordeum distichon L.	XX-0-IB-019574
350	*F*	Koeleria pyramidata (Lam.) P.Beauv. <i>W/AT-Tirol-Zirl-620m</i>	AT-0-IB-028192
351	*A*	Koeleria vallesiana (Honck.) Bertol. ex Schult. <i>W/FR-Elsaß-Rouffach</i>	FR-0-NGOET-2236
352	*A*	Melica ciliata L. subsp. monticola (Prokudin) Tzvelev <i>W/GR - Timfi-Micro Pagigo-Raitovoli</i>	GR-0-IB-016635
353	*F*	Molinia caerulea agg. (L.) Moench <i>W/AT-Tirol-Nordtirol-Karwendel-Nordkette (Inntalkette)-Innsbruck-Allerheiligen-11°21'00"E-47°16'28"N, 830m</i>	AT-0-IB-019004
354	*F*	Nardus stricta L. <i>W/AT/Tirol: Nordtirol - Zillertaler Alpen - wenig S vom Schlegeisspeicher - 11°43'20"E - 47°00'37"N, 1800 m s.m. (13.09.2019)</i>	AT-0-IB-019024
355	*F*	Panicum miliaceum L.	XX-0-IB-021616
356	*A*	Poa molineri Balb. <i>W/AT-Tirol: Nordtirol-Tuxer Alpen-Vennbachtal, Südhang N oberhalb von Venn - E 11°31'30 - N 47°00'55'', 1500-1600 m</i>	AT-0-IB-028412
357	*F*	Secale cereale L.	XX-0-IB-019576
358	*A*	Sesleria autumnalis (Scop.) F.W.Schultz <i>W/GR-Pinthos-Aoos Gorge-700m</i>	GR-0-IB-018930
359	*A*	Sesleria caerulea (L.) Ard.	XX-0-IB-004756
360	*A*	Sesleria skipetarum Ujhelyi <i>W/AL-Shkoder-Puke-along the road from Puke to Shkoder-300m</i>	AL-0-IB-016863
361	*F*	Sorghum bicolor (L.) Moench	XX-0-ZAVRT-8019A
362	*F*	Stipa capillata L. <i>W/AT-Tirol-Nordtirol-Oberinntal-Roppen-Kapelle NNE des Ortes-10°49'05"E-47°13'15"N, 740m</i>	AT-0-IB-019028
363	*A*	Stipa pennata agg. L.	XX-0-IB-004768
364	*A*	Trisetum alpestre (Host) P.Beauv. <i>W/IT-Lombardia - Prealpi Orobie - Pizzo Arera - 9°48'21`` E - 45°55'45`` N, 1984 m s.m.</i>	IT-0-IB-028374
365	*F*	Triticum boeoticum Boiss.	XX-0-IB-021615

366 *F* *Triticum turgidum* Steud. subsp. *dicocon* (Schrank) Thell. XX-0-IB-019580

Polemoniaceae

- 367 *A* *Collomia grandiflora* Douglas ex Lindl. XX-0-IB-021844
368 *F* *Ipomopsis rubra* (L.) Wherry US-0-TUEB-1528
W/US-Oklahoma
369 *F* *Polemonium caeruleum* L. XX-0-IB-004816

Polygonaceae

- 370 *A* *Eriogonum saxatile* S.Watson US-0-IB-021374
W/US-California-San Bernadino Co.-San Gabriel Mts.-Mt. San Antonio-2900m
371 *F* *Rheum palmatum* L. XX-0-IB-004875
372 *A* *Rheum tibeticum* Maxim. ex Hook. f. CN-0-IB-004879
W/CN-Karakorum-Mutztagh Valley
373 *F* *Rumex acetosa* L. AT-0-IB-024610
W/AT/Kärnten - Drautal - Grafenstein, Saager - 14°29'38.51"E - 46°34'58.50"N, 500-600 m

Polypodiaceae

- 374 *G* *Platycterium bifurcatum* (Cav.) C. Chr. XX-0-IB-015500

Primulaceae

- 375 *A* *Androsace septentrionalis* L. FR-0-IB-027828
W/FR-Lautaret, 1830 m
376 *A* *Androsace villosa* L. subsp. *koso-poljanskii* (Ovcz.) Fed. RU-0-IB-017848
W/RU-Voronez
377 *A* *Cyclamen coum* Mill. subsp. *caucasicum* (K.Koch) O.Schwarz TR-0-IB-004998
W/TR-Kavak-650m
378 *A* *Dodecatheon clevelandii* Greene subsp. *insulare* H.J.Thomps. US-0-IB-022100
W/US-Santa Barabara Co., CA, 3800ft, 1160m
379 *A* *Dodecatheon clevelandii* Greene subsp. *patulum* (Greene) H.J.Thomps. US-0-IB-022101
W/US-Ventura Co., CA, 350ft, 107m
380 *A* *Dodecatheon dentatum* Hook. XX-0-IB-018392
381 *A* *Dodecatheon meadia* L. XX-0-IB-005008
382 *A* *Lysimachia ephemerum* L. XX-0-IB-005018
383 *A* *Primula bulleyana* Forrest XX-0-IB-027054
384 *F* *Primula elatior* (L.) Hill AT-0-IB-019038
W/AT-Tirol-Nordtirol-Karwendel-Leutasch, südlich Moos-11°7'44"E-47°20'29"N-1210m
385 *A* *Primula pulverulenta* Duthie XX-0-IB-027102
386 *F* *Soldanella montana* Willd. XX-0-IB-029860

Ranunculaceae

- 387 *F* *Aconitum cymbulatum* (Schmalh.) Lipsky GE-0-IB-025705
W/GE-Samtskhe-Javakheti-Bakuriani, slopes S of the village, NE of Tkhratskaro pass-tall herb meadow-N41 41.917,043 31.789, 2431m
388 *A* *Anemone multifida* Poir. CA-0-IB-005118
W/CA-British Columbia-White Rocks
389 *A* *Anemone rupicola* Cambess. XX-0-IB-025994
390 *F* *Anemone sylvestris* L. XX-0-IB-019047

391	*A*	Aquilegia atrata Koch <i>W/AT-Tirol-Innsbruck-Hötting-unterhalb Rauschbrunnen-850m</i>	AT-0-IB-023835
392	*A*	Aquilegia bertolonii Schott	XX-0-IB-025191
393	*A*	Aquilegia chrysantha A.Gray <i>W/US-Colorado</i>	US-0-IB-005141
394	*A*	Clematis songorica Bunge <i>W/KZ-Almaty-Charyn Canyon-at western entrance of Valley of Castles-1120m</i>	KZ-0-IB-005172
395	*F*	Pulsatilla aurea (N.Busch) Juz. <i>W/GE-Svaneti-Ushguli, meadows and snowbed W of the Zagaro pass-N 42 54.651, O 43 04.856, 2452m</i>	GE-0-IB-025651
396	*P*	Pulsatilla vernalis (L.) Mill. <i>W/IT-Nauders-2100m</i>	IT-0-IB-005240
397	*F*	Trollius europaeus L.	XX-0-IB-005280
398	*A*	Trollius farreri Stapf	XX-0-REYK-2000/004

Resedaceae

399	*F*	Reseda lutea L. <i>W/AT/Tirol: Nordtirol - Oberinntal, Talboden - Zirl, Richtung Martinsbühel - 11°15'50.37"E - 47°16'2.01"N, 590 m</i>	AT-0-IB-019061
-----	-----	--	----------------

Rosaceae

400	*F*	Agrimonia eupatoria L. <i>W/AT-Tirol-Nordtirol-Karwendel-Terfens-zwischen Neu-Terfens und Einöde-11°37'52.81"E-47°19'4.90"N, 644m (07.11.2021)</i>	AT-0-IB-028834
401	*A*	Chamaebatiaria millefolium (Torr.) Maxim. <i>W/US-Nevada-White Pine Co.-2500m</i>	US-0-IB-005325
402	*A*	Coluria geoides (Pall.) Ledeb. <i>W/KZ-Altai-Belukha-1200m</i>	KZ-0-IB-005327
403	*A*	Dryas drummondii Richardson ex Hook. <i>W/US-Alaska</i>	US-0-IB-005342
404	*A*	Dryas octopetala L.	XX-0-IB-005343
405	*A*	Dryas tenella Pursh	XX-0-IB-025333
406	*F*	Filipendula vulgaris Moench	XX-0-IB-019072
407	*A*	Geum magellanicum Comm. ex Pers. <i>W/CL-Torres del Pain</i>	CL-0-IB-005361
408	*F*	Geum rivale L. <i>W/AT-Tirol-Nordtirol-Stubaier Alpen-Flauerling-Waldweg Richtung Westen-11° 6'42.44"E-47°17'28.49"N, 690m</i>	AT-0-IB-019075
409	*A*	Geum triflorum Pursh <i>W/CA-British Columbia</i>	CA-0-IB-005371
410	*F*	Geum urbanum L. <i>W/AT-Tirol-Nordtirol-Stubaier Alpen-Westliches Mittelgebirge-Axams, Bachtl-11°15'52.9"E-47°14'9.4"N,840m</i>	AT-0-IB-019074
411	*A*	Potentilla deorum Boiss. & Heldr. <i>W/ME-Prokletije-Vusanje - Maja e Rosit</i>	ME-0-IB-016619
412	*A*	Potentilla glandulosa (R.Keller ex Siegrfr.) Th.Wolf	XX-0-IB-025973
413	*A*	Potentilla multifida L. <i>W/TJ-Gorno-Badakhshan-Western Pamir-8.5 km NNW Dzhiland (Djelondi)-E 72°32'34",N 37°38'23"- 3544m</i>	TJ-0-IB-021076
414	*A*	Potentilla nepalensis D.Don	XX-0-IB-005415
415	*A*	Potentilla pulvinaris Fenzl	XX-0-IB-005413

- 416 *A* *Potentilla villosa* Pall. ex Pursh CA-0-IB-005424
W/CA-British Columbia
- 417 *A* *Sarcopoterium spinosum* (L.) Spach GR-0-IB-018040
W/GR-Kreta

Rutaceae

- 418 *A* *Dictamnus albus* L. XX-0-IB-006536

Saxifragaceae

- 419 *A* *Boykinia rotundifolia* Parry ex A.Gray XX-0-IB-005568
- 420 *A* *Heuchera cylindrica* Douglas CA-0-IB-005576
W/CA-British Columbia-Princeton
- 421 *A* *Heuchera parviflora* Bartl. var. *nivalis* (Rosend., Butters & Lakela) Á. Löve, D. Löve & B.M. Kapoor US-0-IB-018265
W/US-Colorado-Lake Co.-3900m
- 422 *F* *Heuchera richardsonii* R. Br. US-0-IB-019783
ex US-Prairie Moon Nursery-Winona-Minnesota
- 423 *A* *Micranthes pensylvanica* (L.) Haw. XX-0-GZU-YY 210072
- 424 *A* *Saxifraga bronchialis* L. RU-0-IB-021298
W/RU-Sibirien-Region Burjatien-Svyatoy Nos-Ust-Barguzin
- 425 *A* *Saxifraga cartilaginea* Willd. GE-0-IB-023164
W/GE-Svaneti-Tsana-rocks along the road to Lentekhi-N 42° 51.497,E 43° 09.869-1496m
- 426 *A* *Saxifraga cochlearis* Rchb. 'Minor' XX-0-IB-005615
- 427 *A* *Saxifraga cotyledon* L. IT-0-IB-022036
W/IT-S-Alpen-2000m
- 428 *A* *Saxifraga crustata* Vest IT-0-IB-014588
W/IT-Julische Alpen-Sella Nevea-Mt.Sart-Bela Pec-1800-2300m
- 429 *A* *Saxifraga exarata* Vill. XX-0-TR20061206
- 430 *A* *Saxifraga hostii* Tausch subsp. *hostii* Tausch IT-0-IB-014589
W/IT-Julische Alpen-Sella Nevea-Mt.Sart-Bela Pec-1800-2300m
- 431 *A* *Saxifraga media* Gouan AN-0-IB-022328
W/AN-La Massana-Pal
- 432 *A* *Saxifraga paniculata* Mill. XX-0-IB-005644
- 433 *A* *Saxifraga rebunshirensis* Sipliv. JP-0-REYK-1997/001
W/JP: Hokkaido Prefecture, Katoh-gun, Mt. Nishi-kumaneshiri-dake.
- 434 *A* *Saxifraga sancta* Griseb. subsp. *pseudosanta* (Janka) Kuzmanov XX-0-IB-009025
- 435 *A* *Saxifraga scardica* Griseb. AL-0-IB-005654
W/AL-Korab-Mts.-1400m
- 436 *A* *Saxifraga scleropoda* Sommier & Levier. RU-0-IB-007581
W/RU-Kaukasus-Ceget-3100m

Scrophulariaceae

- 437 *F* *Scrophularia nodosa* L. AT-0-IB-005811
W/AT-Tirol-Nordtirol-Stubaier Alpen-Westliches Mittelgebirge-Oberperfuss-östlich-11°15'21.68"E-47°14'28.56"N, 774m
- 438 *F* *Verbascum crassifolium* (DC.) Murb. AT-0-IB-005823
W/AT-Tirol-Ötztal-Sölden11.08.21
- 439 *F* *Verbascum densiflorum* Bertol. XX-0-IB-007280

- 440 *F* *Verbascum lychnitis* L.
W/AT-Tirol-Nordtirol-Karwendel-Zirl, Eigenhofen-11°12'51.6"E-47°16'50.8"N,640 m
- 441 *F* *Verbascum nigrum* L.

AT-0-IB-019104

XX-0-IB-019138

Solanaceae

- 442 *F* *Datura stramonium* L.
- 443 *F* *Hyoscyamus niger* L.

XX-0-IB-005885

XX-0-ANGMF-1934

Typhaceae

- 444 *A* *Typha minima* Funck
W/AT-Lechtal

AT-0-IB-017766

Xanthorrhoeaceae

- 445 *F* *Hemerocallis minor* Mill.
W/RU/Altai Krai , Pervomaisky raion; N 53°04'30" E 83°48'20" [± 30000 m]

RU-0-OSN-2009-540

Botanischer Garten Innsbruck / Botanical Garden Innsbruck

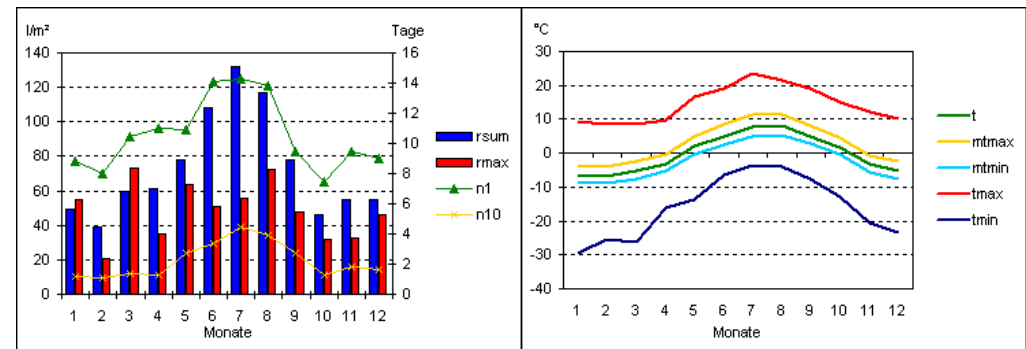
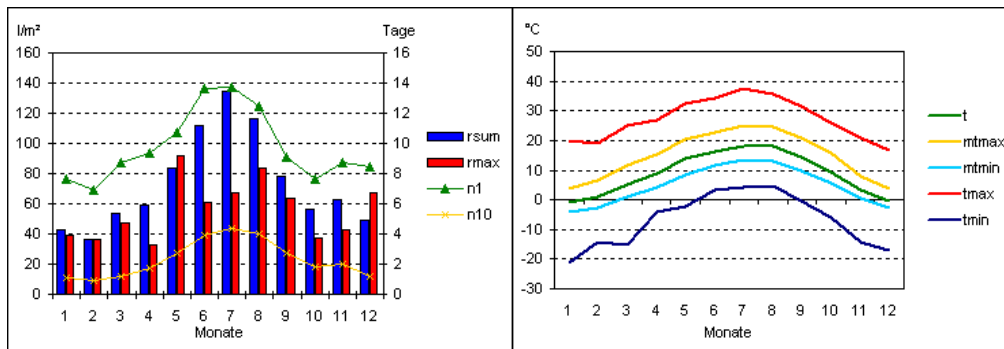


Gartenfläche / Size of the garden	2 ha
Schaugewächshäuser / Public greenhouses	759 m ²
Geografische Lage / Geographical data	47° 16' 4" N 11° 22' 46" E
Meereshöhe / Altitude	611 m

Alpengarten am Patscherkofel / Alpine Garden on Mt. Patscherkofel



Gartenfläche / Size of the garden	2 ha
Forschungsstation / Research station	130 m ²
Geografische Lage / Geographical data	47° 12' 38" N 11° 27' 4" E
Meereshöhe / Altitude	1945 m



Samenbestellung

Bestellungen nur bis 31. März 2024

Wegen des hohen Verwaltungsaufwandes können wir leider kein Pflanzengesundheitszeugnis ausstellen.

Seit Inkrafttreten des Übereinkommens über die Biologische Vielfalt (CBD, Rio de Janeiro, 1992) ergibt sich für Botanische Gärten und vergleichbare Sammlungen, besonders im Zusammenhang mit dem Austausch von pflanzlichem Material, die Notwendigkeit zur Beachtung insbesondere des Artikels 15 der CBD (Zugang zu genetischen Ressourcen). Zur Umsetzung dieses Artikels existiert seit dem Jahr 2002 das Internationale Pflanzen Austausch Netzwerk (IPEN). Es dient dem vereinfachten Austausch von Saatgut und ausschließlich Botanische Gärten können daran teilnehmen. Das Saatgut darf nicht für kommerzielle Zwecke genutzt werden.

Sollten Sie kein IPEN-Mitglied sein, ist die Vereinbarung auf der folgenden Seite zu verwenden.

Für IPEN-Teilnehmer entfällt die Unterschrift.

Für alle Bestellungen von Institutionen außerhalb der EU ist die Angabe der CITES-Registrierungsnummer verpflichtend.

Botanischer Garten und Alpengarten des Instituts für Botanik

Sternwartestraße 15

A – 6020 Innsbruck

Austria

E-Mail: Botanischer-Garten@uibk.ac.at

URL: www.uibk.ac.at/de/botany/botanical-garden/

Seed order

Orders only until March, 31, 2024

We regret being unable to provide a phytosanitary certificate due to the administrative complications involved.

In accordance with the [Convention on Biological Diversity](#) (Rio de Janeiro, 1992) Botanical Gardens have to adhere to Article 15 (Access to genetic resources). Therefore the International Plant Exchange Network (IPEN) has been established so that Botanical Gardens can easily exchange seeds. Only Botanical Gardens are allowed to participate and seeds are not to be used for commercial purposes (<https://www.bgci.org/our-work/inspiring-and-leading-people/policy-and-advocacy/access-and-benefit-sharing/the-international-plant-exchange-network/>).

Those Botanical Gardens not yet participating in [IPEN](#) have to sign the agreement on the next page.

IPEN members do not have to sign the agreement.

For all orders from institutions outside the EU, the CITES registration number is mandatory.

Agreement on the supply of living plant material for non-commercial purposes leaving the International Plant Exchange Network

Against the background of the Convention on Biological Diversity (“CBD”) and the Nagoya Protocol on Access to Genetic Resources and the Fair and Equitable Sharing of Benefits Arising from their Utilization to the Convention on Biological Diversity, the Botanical Garden of the University of Innsbruck is dedicated to promoting the conservation, sustainable use, and research of biological diversity. The Botanical Garden of the University of Innsbruck (the “supplier”) therefore expects its partners in acquiring, maintaining, and transferring plant material to always act in accordance with the CBD, the Nagoya Protocol and the Convention on the International Trade in Endangered Species (CITES).

The responsibility for legal handling of the plant material listed below passes on from the supplier to the recipient upon receipt of the material. The following conditions apply:

1. The recipient may use the supplied plant material, progeny or derivatives only for non-commercial purposes such as scientific study, education and conservation. Should the recipient at a later date intend a commercial use or a transfer to third parties for commercial use, the country of origin’s prior informed consent (PIC) must be obtained in writing before the material is used or transferred.
 2. The recipient is responsible for ensuring an equitable sharing of benefits in accordance with the CBD and the Nagoya Protocol.
 3. The recipient must keep all information on the received plant material, including its origin (supplier, country of origin, year of collection) and the IPEN number, as well as the terms and conditions in a comprehensible manner.
 4. In the event that scientific publications are produced based on the supplied plant material, the recipient is obliged to indicate in those publications the origin of the material (the supplying garden and, if known, the country of origin) as well as the IPEN number. The recipient shall send a copy of these publications to the supplier.
 5. On request, the supplier will forward relevant information on this transfer of the plant material to the body charged with implementing the Nagoya Protocol (usually the competent national authority in the SUPPLIER’s home country).
 6. The recipient may transfer the received plant material, its progeny or derivatives only for non-commercial use to bona fide third parties. Such transfer to third parties must be under the terms and conditions of this agreement, including the obligation to keep, cite and transfer the IPEN number. The recipient must document the transfer in a suitable manner.
-

I accept the above conditions.

Date, Signature

Recipient’s name and address, stamp

We want to inform you that Austria is not putting restrictions on the use of material originating from its territory in the context of the Nagoya Protocol of the Convention on Biological Diversity (CBD). Nevertheless we would appreciate any information about uses of material distributed by us.

Ordentlich schlampig –
Lebensraum für Pflanzen und
Tiere

Ausstellung - Exhibition



„BOTANICA 2023 in
Kooperation mit dem Alles
Gute Festival “

Naturführer*innen
Start der Ausbildung und
Titelverleihung



 Find us on
Facebook

 Follow us on
Instagram

