

# **Weeds of Arkansas - Grasses**

John Boyd

University of Arkansas Cooperative  
Extension

# Bahiagrass, *Paspalum notatum*



**Bahiagrass, *Paspalum notatum***



**Bahiagrass, *Paspalum notatum***



Bahiagrass, *Paspalum notatum*





**Bahiagrass, *Paspalum notatum***



**Prairie Three-Awn, *Aristida oligantha***



**Dallisgrass, *Paspalum dilatatum***





Dallisgrass, *Paspalum dilatatum*



Dalisgrass, *Paspalum dilatatum*



Dalisgrass seedhead, *Paspalum dilatatum*



**Fall Panicum, *Panicum capillare***



**Scribner's Panicum**  
*Panicum scribnerianum*



**Scribner's Panicum**  
*Panicum scribnerianum*



**yellow**

**foxtails**



**knot root**



**giant**



**green**

knot root foxtail, *Setaria geniculata*





**knot root foxtail**



**Dig it up and  
look for  
rhizomes**



**Yellow foxtail, *Setaria lutescens***



**Giant foxtail, *Setaria faberii***

**Johnsongrass (*Sorghum halepense*)**





**Johnsongrass**



**Big ligule**



**White midrib**



**Johnsongrass (*Sorghum halepense*)**

# Johnsongrass





Purpletop, *Tridens flavus*





Purpletop, *Tridens flavus*



Purpletop, *Tridens flavus*



**Broadleaf signalgrass, *Urochloa platyphylla***



**Broadleaf signalgrass, *Urochloa platyphylla***

**Broadleaf signalgrass,  
*Urochloa platyphylla***





**Broadleaf signalgrass**

**Broadleaf  
signalgrass**





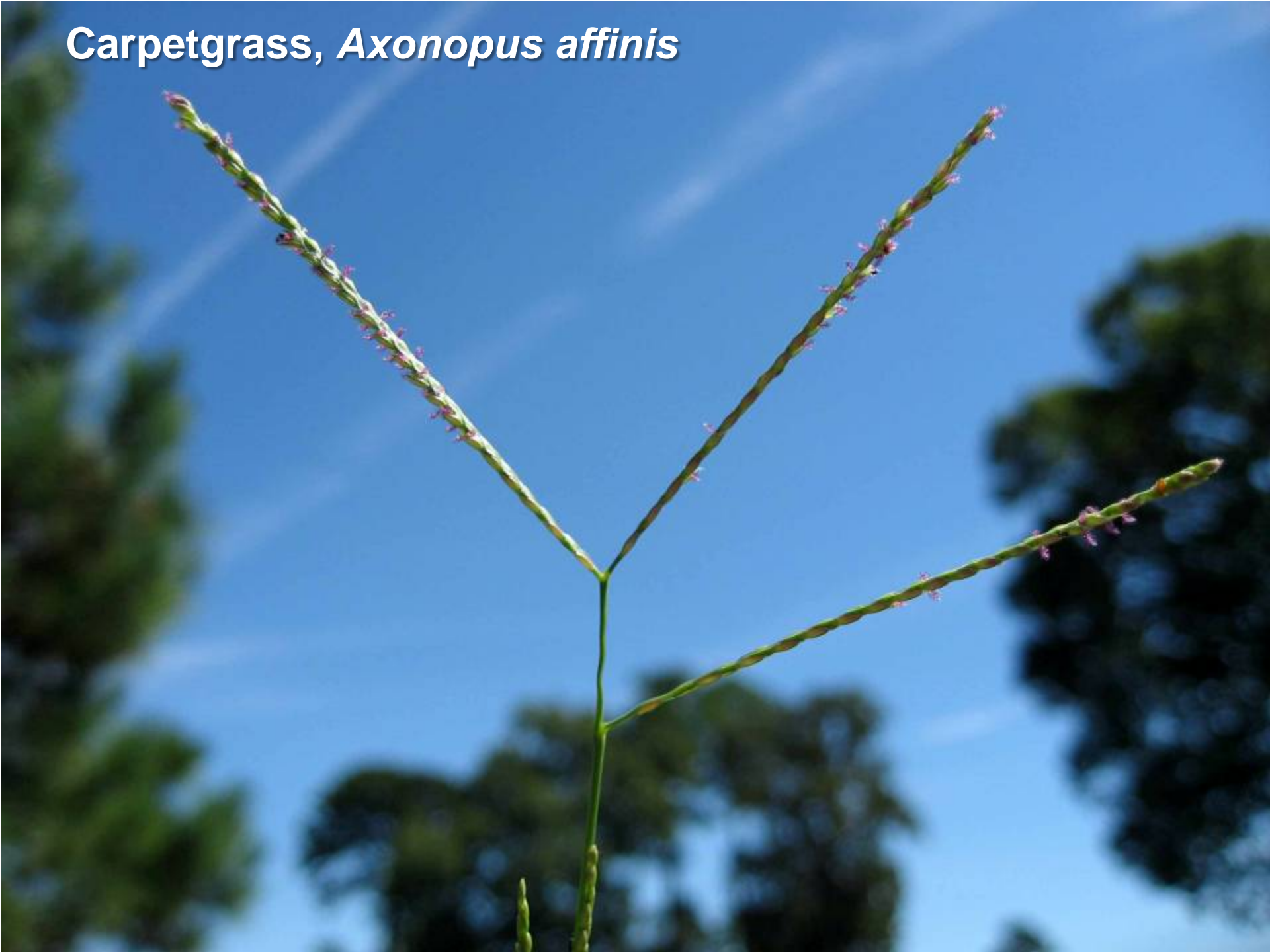
**Carpetgrass, *Axonopus affinis***





**Carpetgrass, *Axonopus affinis***

**Carpetgrass, *Axonopus affinis***



Carpetgrass, *Axonopus affinis*



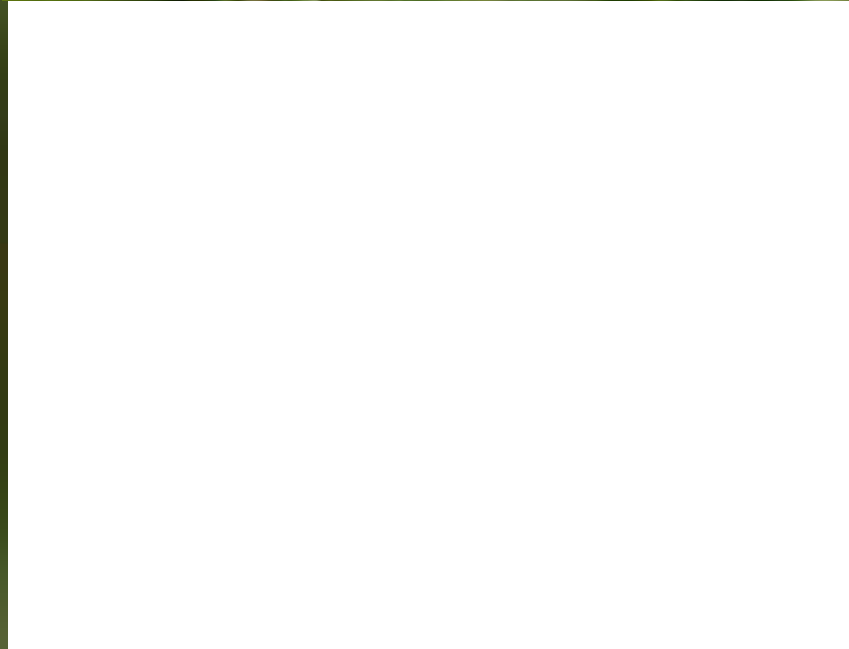
**Carpetgrass, *Axonopus affinis***



Carpetgrass in a bermudagrass green



**Nimblewill, *Muhlenbergia schreberi***



**Nimblewill, *Muhlenbergia schreberi***



**Nimblewill, *Muhlenbergia schreberi***

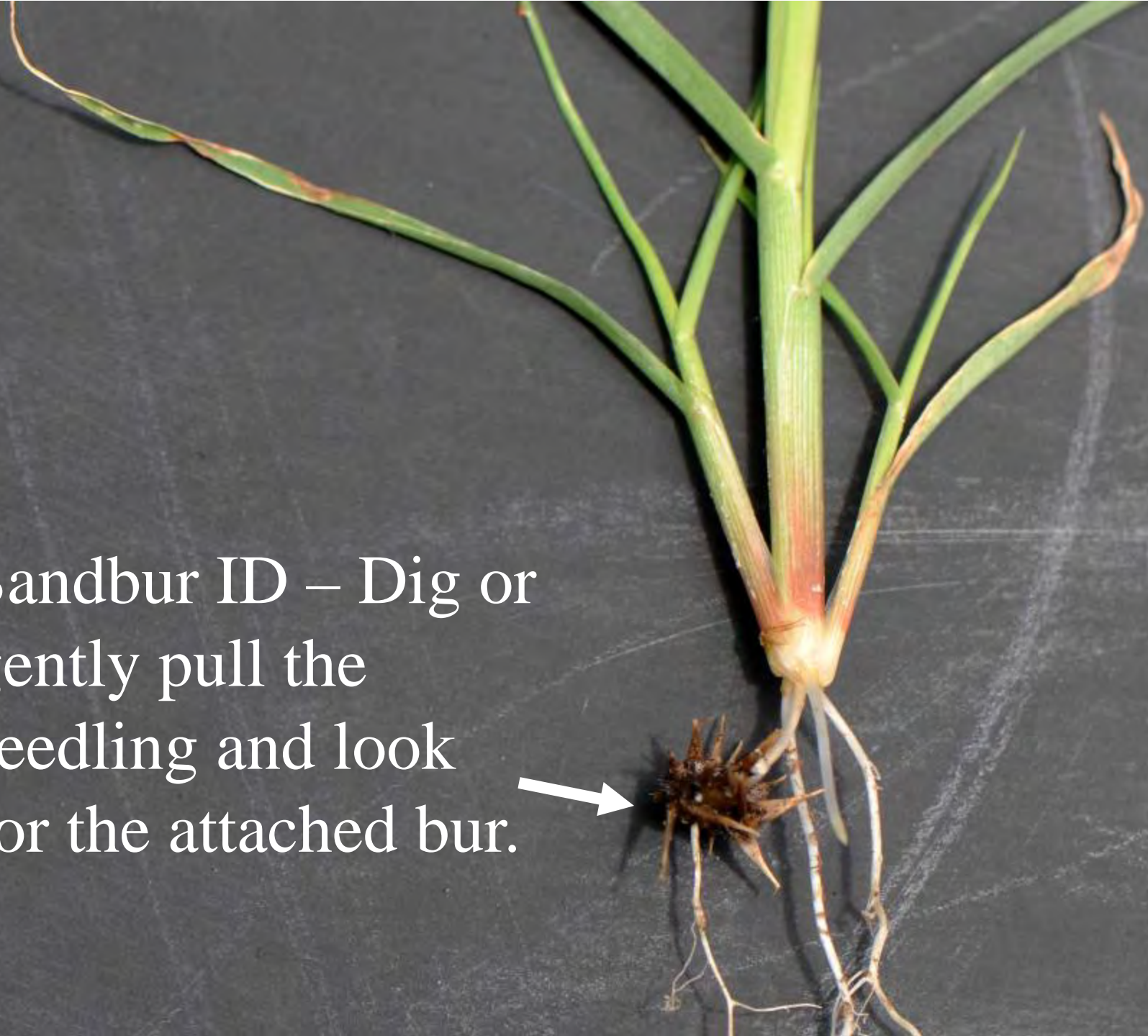






**Sandbur, *Cenchrus longispinus***

Sandbur ID – Dig or  
gently pull the  
seedling and look  
for the attached bur.





Stem cross-section, sandbur stems are flattened



Sandbur collar



Sandbur



Slide your fingers down the leaf edges - it will have a rough, sandpaper feel similar to tall fescue

Sandbur - leaf



**Sandbur**



Sandbur

# Sandbur



**Orchardgrass, *Dactylis glomerata***





**Orchardgrass, *Dactylis glomerata***



Barnyardgrass, *Echinochloa crus-galli*





**Barnyardgrass**

**Sprangletop, *Leptochloa* spp**



Sprangletop, *Leptochloa* spp



A young Goosegrass plant (Eleusine indica) is shown growing in reddish-brown soil. The plant has several long, narrow, green leaves that are slightly curved and have a prominent midrib. The soil is composed of small, reddish-brown particles and some larger clumps. There are a few small, green, four-lobed plants scattered around the main plant. The overall scene is a close-up of the plant in its natural growing environment.

Goosegrass, *Eleusine indica*

Goosegrass, *Eleusine indica*



Goosegrass, *Eleusine indica*





Goosegrass  
seedhead



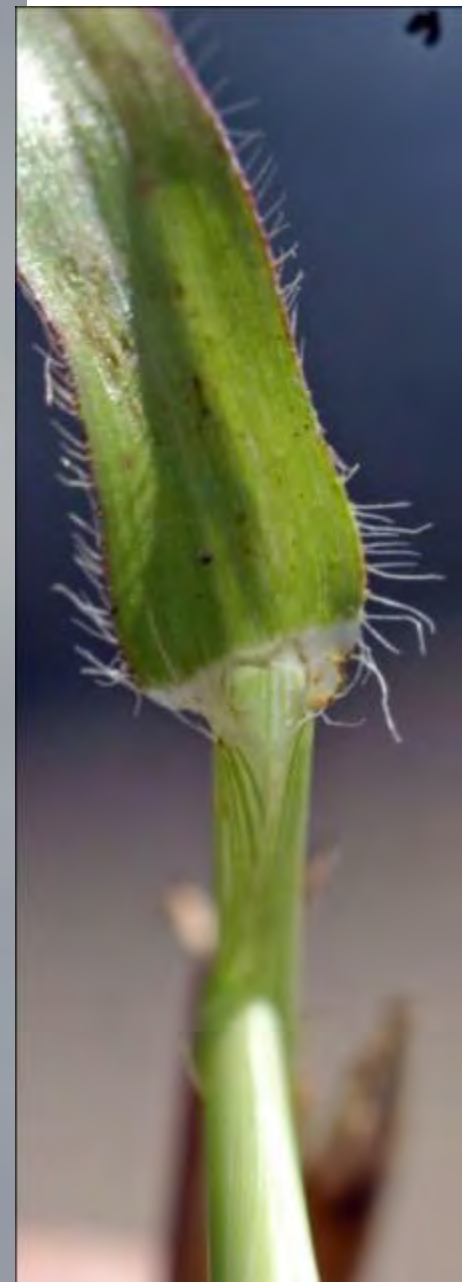
Crabgrass  
seedhead



Crowfoot  
seedhead



Crowfootgrass, *Dactyloctenium aegyptium*





**Crowfootgrass, *Dactyloctenium aegyptium***

**Bermudagrass, *Cynodon dactylon***





**Bermudagrass, *Cynodon dactylon***

Bermudagrass, *Cynodon dactylon*



**Bermudagrass, *Cynodon dactylon***

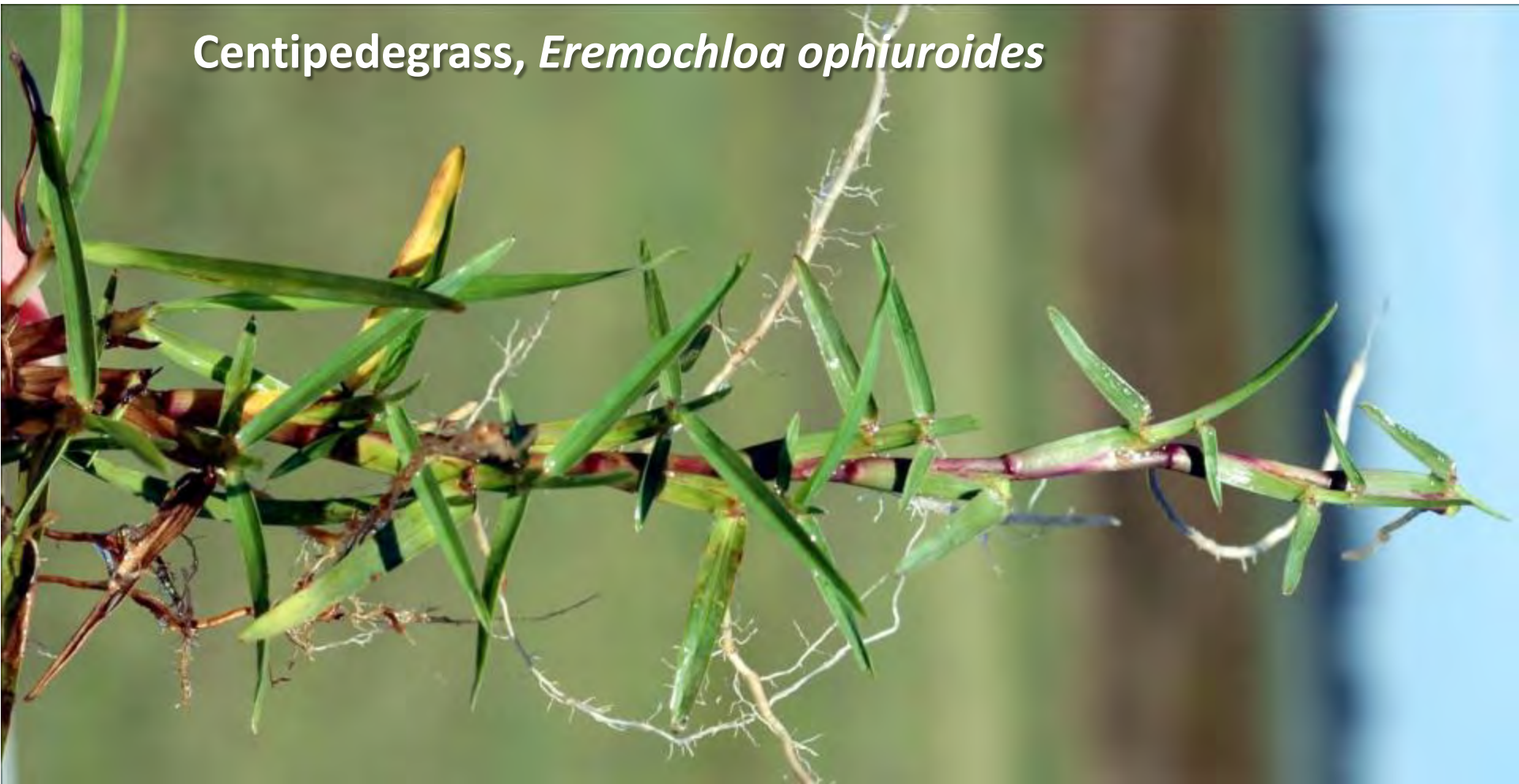


Centipedegrass, *Eremochloa ophiuroides*





Centipedegrass, *Eremochloa ophiuroides*





**Centipedegrass, *Eremochloa ophiuroides***

Zoysiagrass, *Zoysia japonica*





**St. Augustinegrass, *Stenotaphrum secundatum***



**St. Augustinegrass, *Stenotaphrum secundatum***

St. Augustinegrass, *Stenotaphrum secundatum*



Stinkgrass, *Eragrostis cilianensis*



Stinkgrass, *Eragrostis cilianensis*



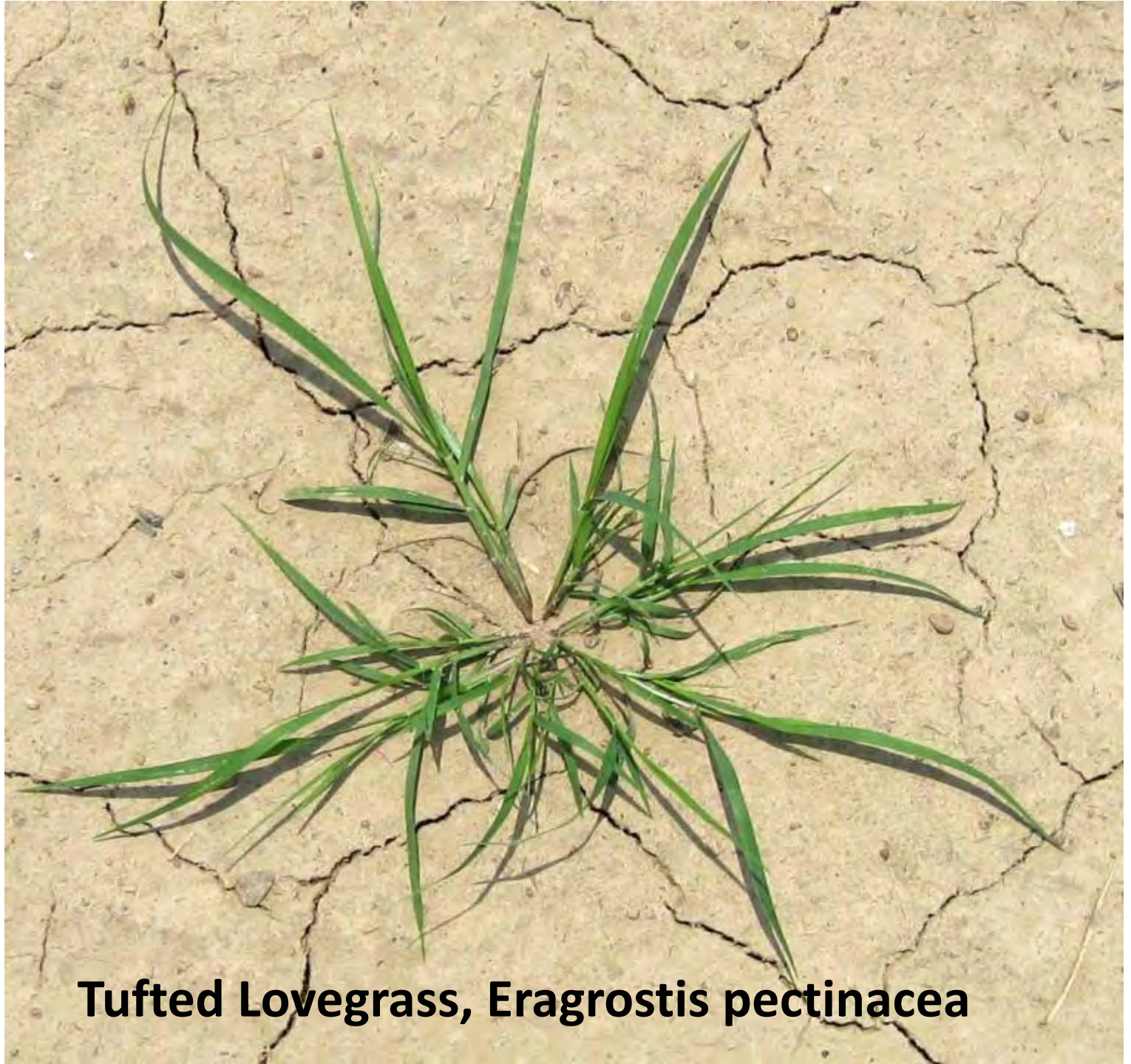




Tufted Lovegrass  
*Eragrostis pectinacea*

Tufted Lovegrass, *Eragrostis pectinacea*





**Tufted Lovegrass, *Eragrostis pectinacea***



**Tufted Lovegrass**



**barnyardgrass**



**Yellow foxtail**



**Green foxtail**

# Crabgrass growth



Emergence



4 days later



9 days later



42 days later



1-leaf crabgrass



2-leaf crabgrass



3-leaf crabgrass



4-leaf crabgrass



1-tiller crabgrass



2-tiller crabgrass

**Large crabgrass, *Digitaria sanguinalis***

# Crabgrass

- Summer annual
- Capable of rooting at the lower nodes of stems,
- Crabgrass quickly invades thin, open stands.



Root emerging on crabgrass stem



seedling crabgrass



4 - leaf crabgrass



Large crabgrass, *Digitaria sanguinalis*





**Large crabgrass, *Digitaria sanguinalis***

A close-up photograph of a large crabgrass stem. The stem is green and covered in fine, white, spreading hairs. Several green leaves are attached to the stem, showing prominent parallel veins. The background is a blurred, reddish-brown soil surface.

**Hairy stem of large crabgrass**



**Annual Bluegrass, *Poa annua***

# Annual Bluegrass, *Poa annua*



**Annual bluegrass,**  
*Poa annua*



Ryegrass, *Lolium spp*





Ryegrass, *Lolium spp*



# Ryegrass, *Lolium* spp



**ligule**



**auricle**

Little Barley, *Hordeum pusillum*



Little Barley, *Hordeum pusillum*





Tall Fescue, *Festuca arundinacea*



Tall Fescue, *Festuca arundinacea*



Tall Fescue, *Festuca arundinacea*

Tall fescue, *Festuca arundinacea*

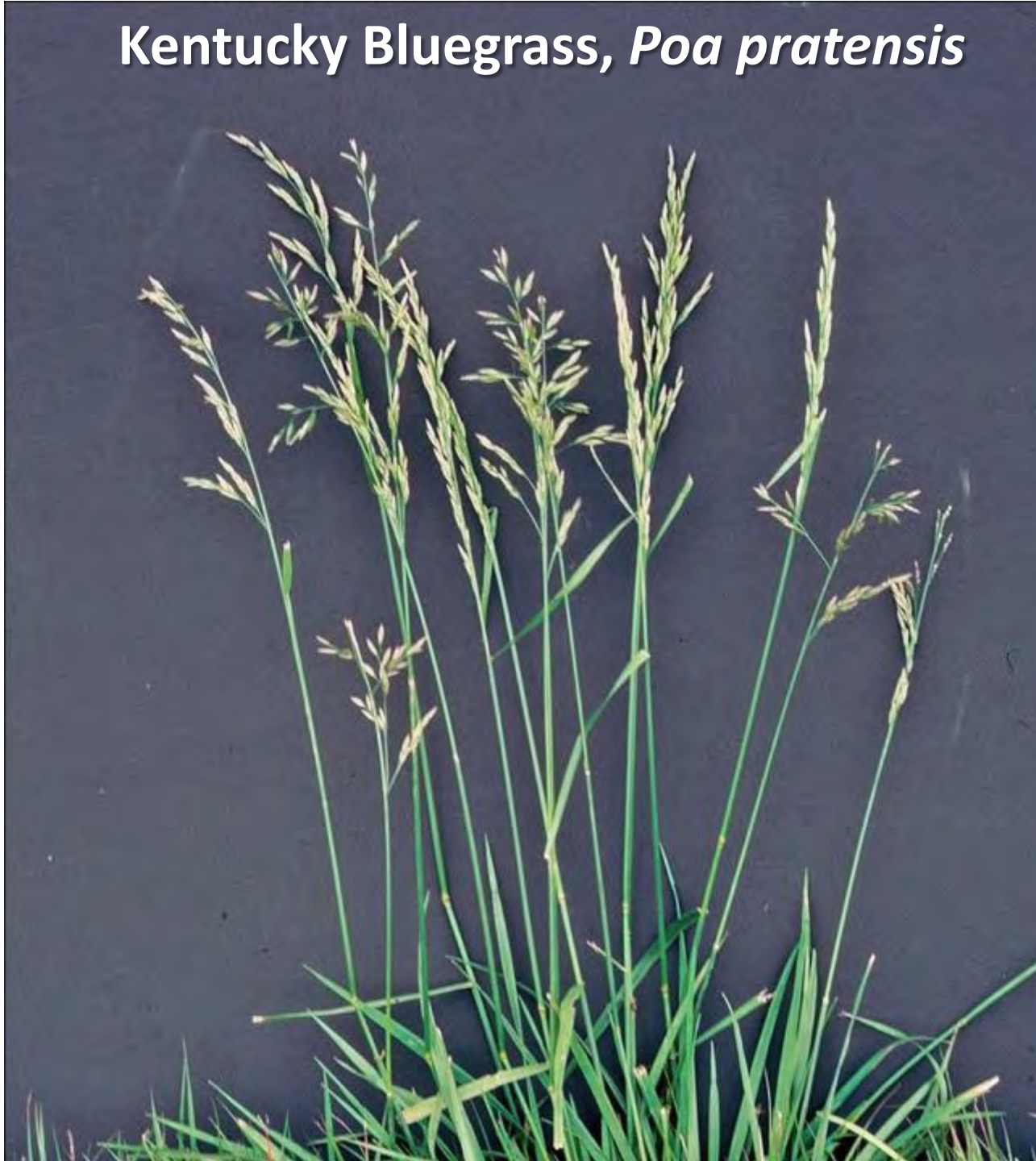




Tall Fescue, *Festuca arundinacea*



# Kentucky Bluegrass, *Poa pratensis*





**Ryegrass**

**Cheat**

**Downy Brome**

**Little Barley**

**Tall Fescue**

**Ky. Bluegrass**



**Centipedegrass**



**St. Augustinegrass**



**Zoysiagrass**

Broomsedge, *Andropogon virginicus*



**Sweet Vernalgrass, *Anthoxanthum odoratum***



**Sweet Vernalgrass, *Anthoxanthum odoratum***





**Carolina foxtail, *Alopecurus carolinianum***

**Carolina foxtail, *Alopecurus carolinianum***





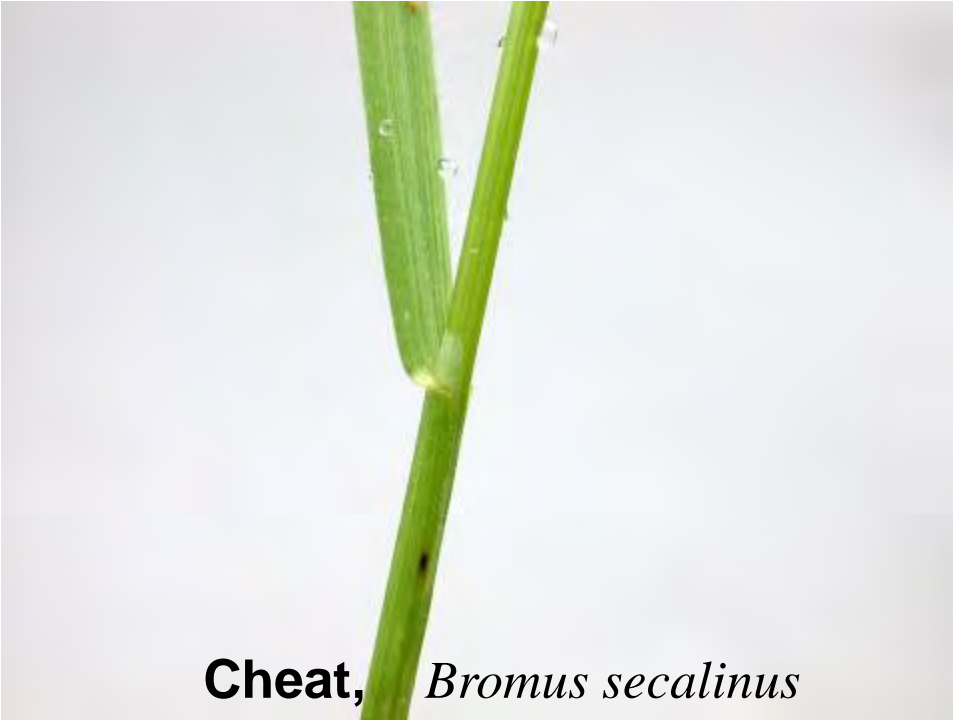


**Rescuegrass, *Bothriochloa willdenowii***  
(*Bromus cathartica*)



**Cheat, *Bromus secalinus***

**Downy Brome, *Bromus tectorum***



**Cheat,** *Bromus secalinus*



**Downy Brome,** *Bromus tectorum*





**Downy Brome, *Bromus tectorum***



**Cheat, *Bromus secalinus***



**Cheat, *Bromus secalinus***

**Wild rye, *Elymus***



# Annual bluegrass





**Rattail fescue, *Vulpia myuros***



Rattail fescue, *Vulpia myuros*



# Sedges and Rushes

# Sedges

Unlike grasses, these plants have pithy, triangular stems and their leaves arranged in threes.



Stem cross-section



Leaves are arranged in threes



**3-ranked leaves  
sedges**



**2-ranked leaves-  
grasses**



**Sedge Stem**



**Grass Stems**



**Texas Sedge, *Cyperus polystachos***



**Texas Sedge, *Cyperus polystachos***



**Annual sedge,  
*Cyperus  
compressa***



Annual Sedge, *Cyperus compressa*



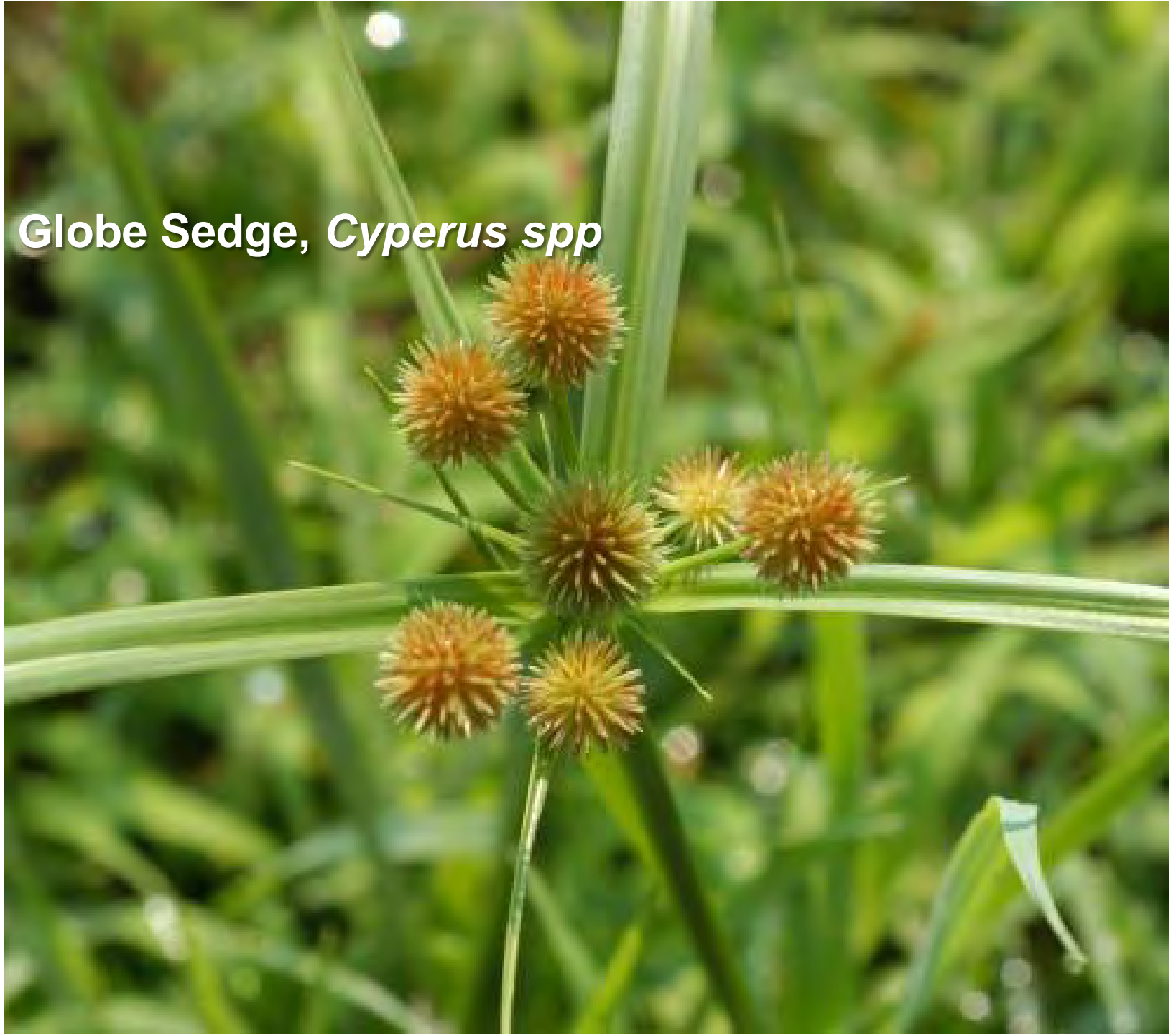


**Kyllinga**

Kyllinga



Globe Sedge, *Cyperus spp*



# Globe Sedge



# Rice flatsedge, *Cyperus iria*





**Purple Nutsedge, *Cyperus rotundus***



**Purple nutsedge with rhizome**



# Purple Nutsedge

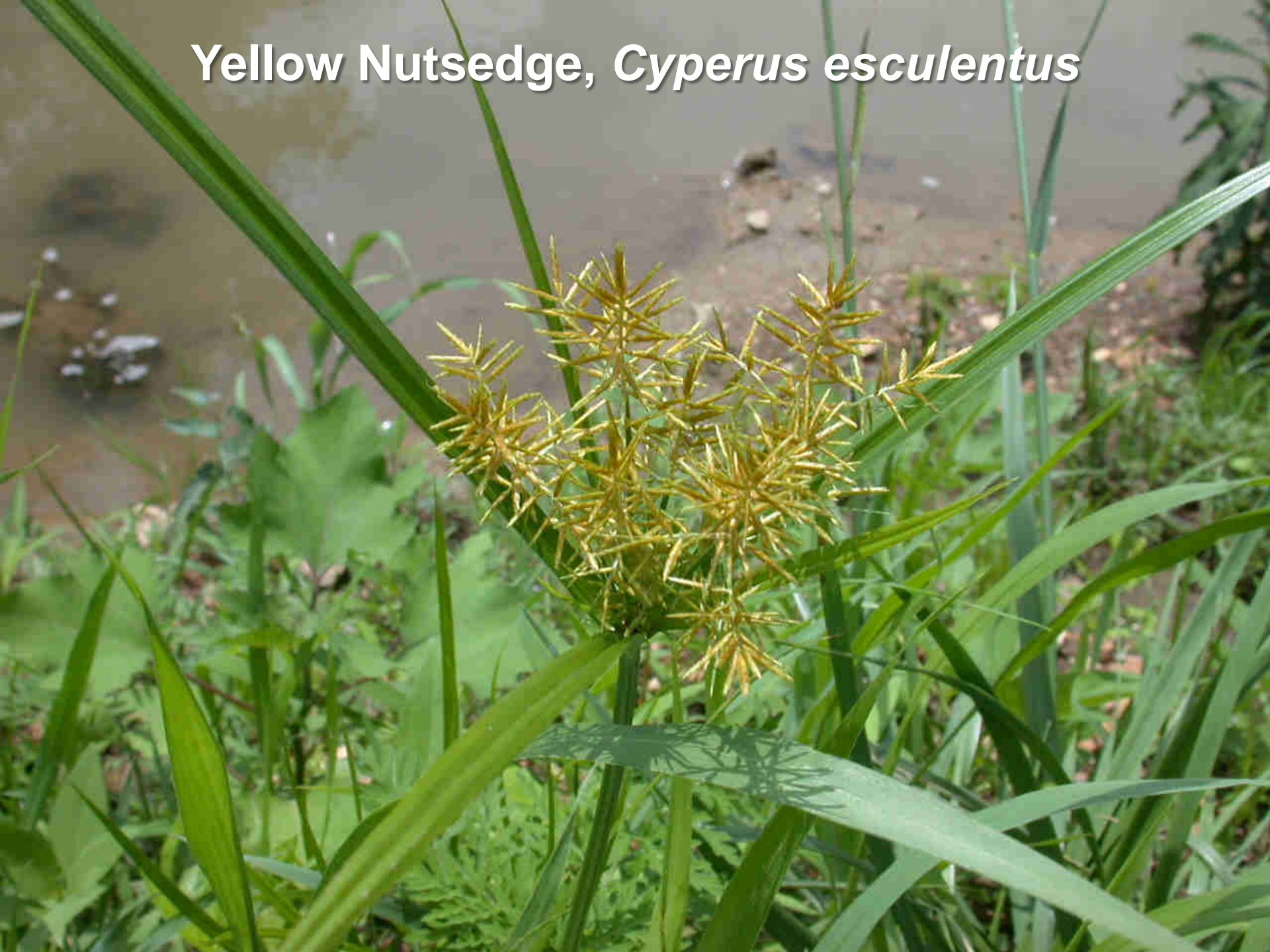


purple nutsedge    yellow nutsedge



Leaf tip shape helps separate purple and yellow nutsedge.

**Yellow Nutsedge, *Cyperus esculentus***



**Purple nutsedge**



**Yellow Nutsedge**



# Yellow nutsedge with seedheads



# Yellow Nutsedge

rhizomes



Yellow nutsedge tubers



**Leathery Rush, *Juncus coriaceus***



**Leathery Rush, *Juncus coriaceus***





**Path Rush,  
*Juncus*  
*tenuis***



**Path Rush,**  
***Juncus***  
***tenuis***



**Path Rush, *Juncus tenuis***

Path Rush, *Juncus tenuis*

