



*PLANTS FOR
OUR
FUTURE*

How to Design for Water Conservation, Beauty, and Function

February 25, 2015

Seattle, WA



It's (not) rocket science!



Ultimate landscape design



Summer drought an issue...

Native planting





Quercus
garryana



Bioswale - surroundings

Bioswale - surroundings





Bioswale -
surroundings



Bioswale - surroundings



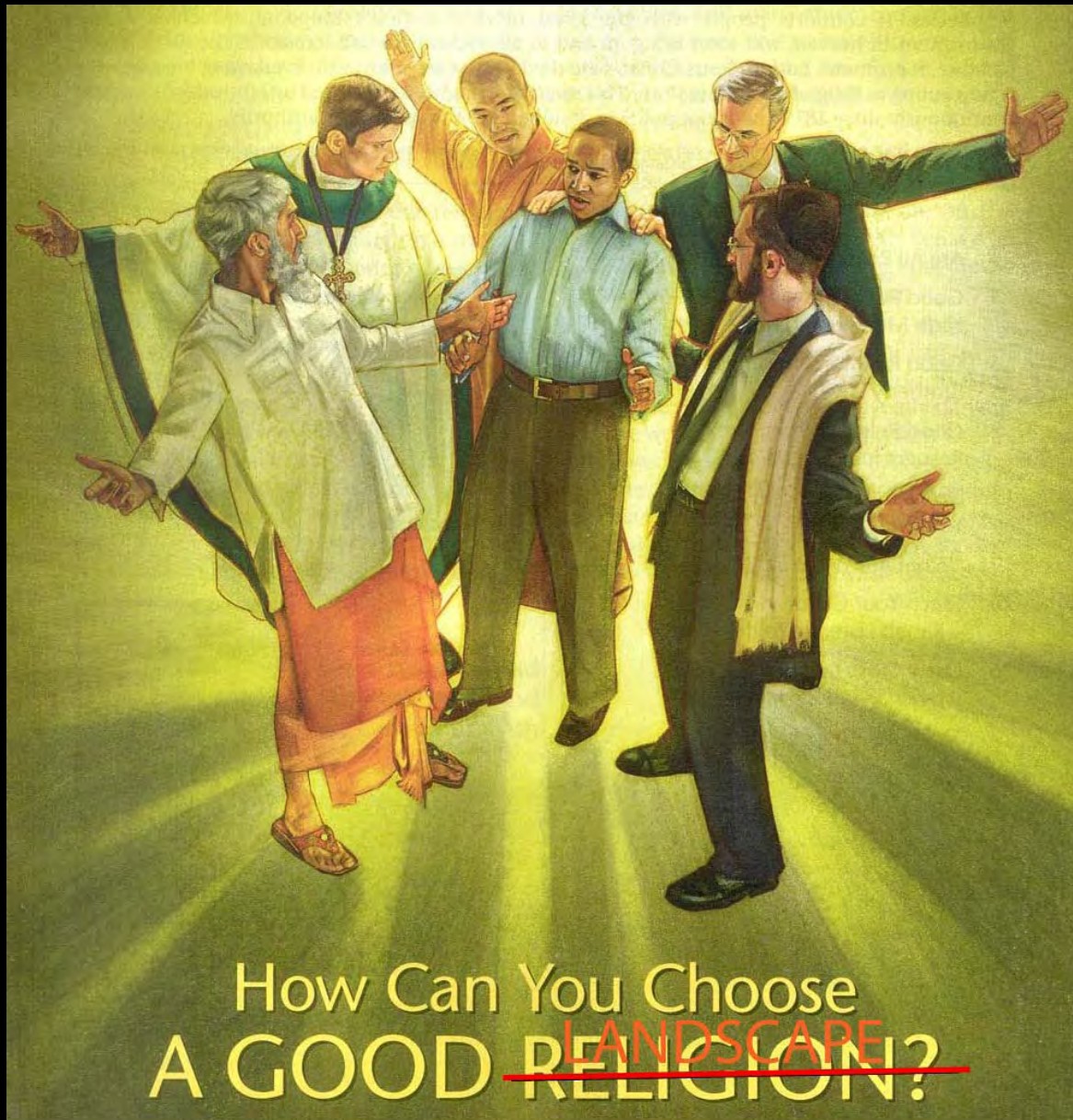
Bioswale - surroundings



Bioswale - surroundings



Bioswale - surroundings



How do we rethink our plant palette?



Juncus patens
'Elk Blue'

Carex (glauca)
flacca





Carex tumulicola



Mixed grasses at Suncrest Nursery, CA



Restio tetraphyllus

Restio
tetrphyllus





Yucca rostrata
'Sapphire Skies'



Camassia
leichtlinii var.
leichtlinii



Escholtzia californica and Sisyrinchium



Epipactis gigantea 'Serpentine Night'

Narthecium
californicum





Narthecium
californicum

Darmera
peltata along
Illinois River,
OR





Darmera
peltata along
Illinois River, OR

Darmera
peltata



Rhododendron occidentale





Rhododendron occidentale – Western Hills form



Calycanthus
occidentale

Arbutus
menziesii





Arbutus
menziesii bark

Quercus
wislizenii



Eastside oak
savannah





Quercus x
morehus

Quercus x
hispanica
'Waasland'





Quercus hypoleucoides



Quercus laceyi

Quercus
phellos





Perfect street
tree

Space saving
tree





Huckleberry
oak
regeneration

Quercus
vaccinifolia



Blending of
native and
vernacular





Ceanothus integerrimus

Ceanothus
integerrimus





Ceanothus 'Kurt
Zadnik'

Ceanothus
foliosus ssp.
vineatus SBH
7667



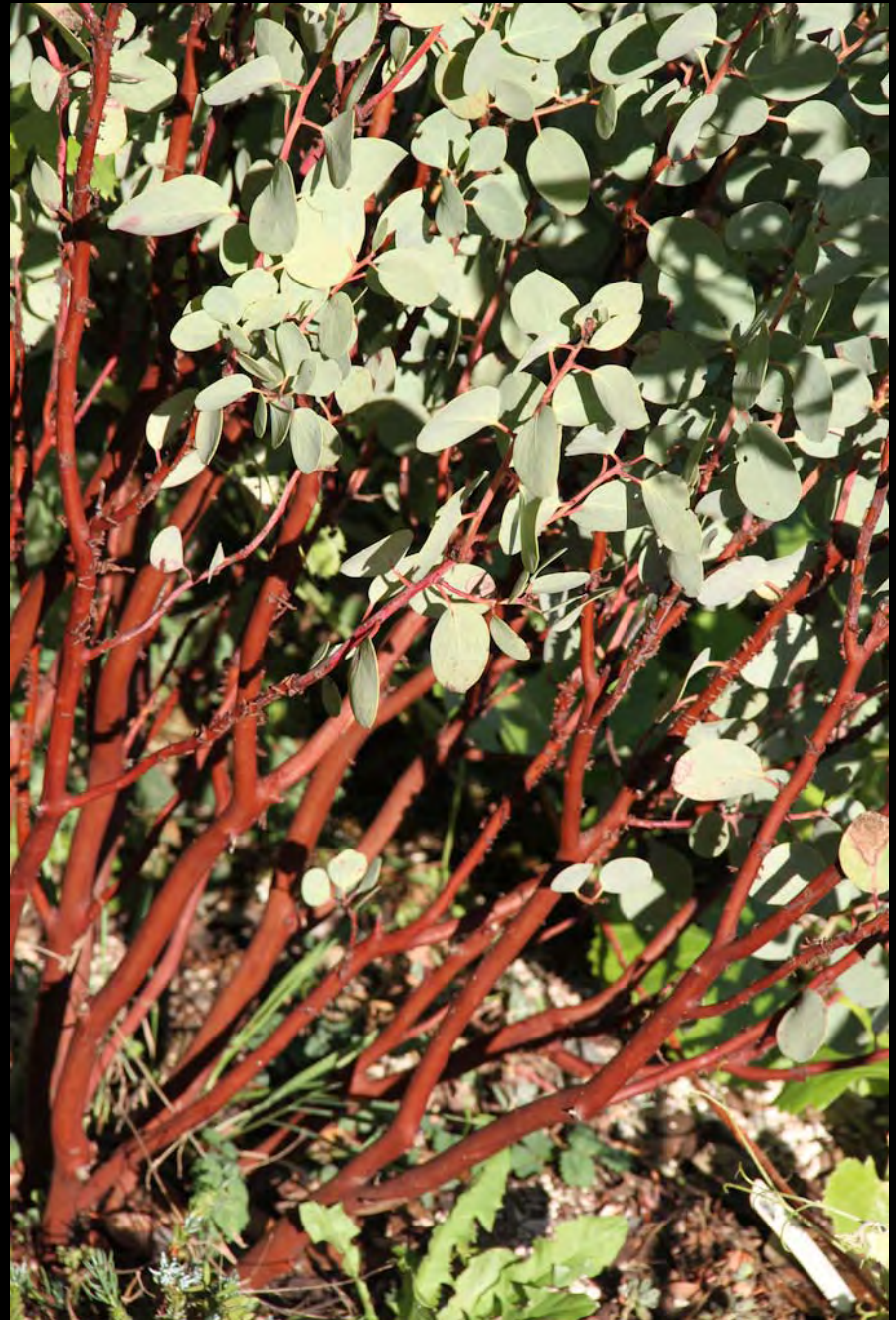


This can even
happen to
native plants!



Which way is the wind blowing?

Arctostaphylos
viscida





Arctostaphylos
manzanita

Arctostaphylos
manzanita



Arctostaphylos
manzanita





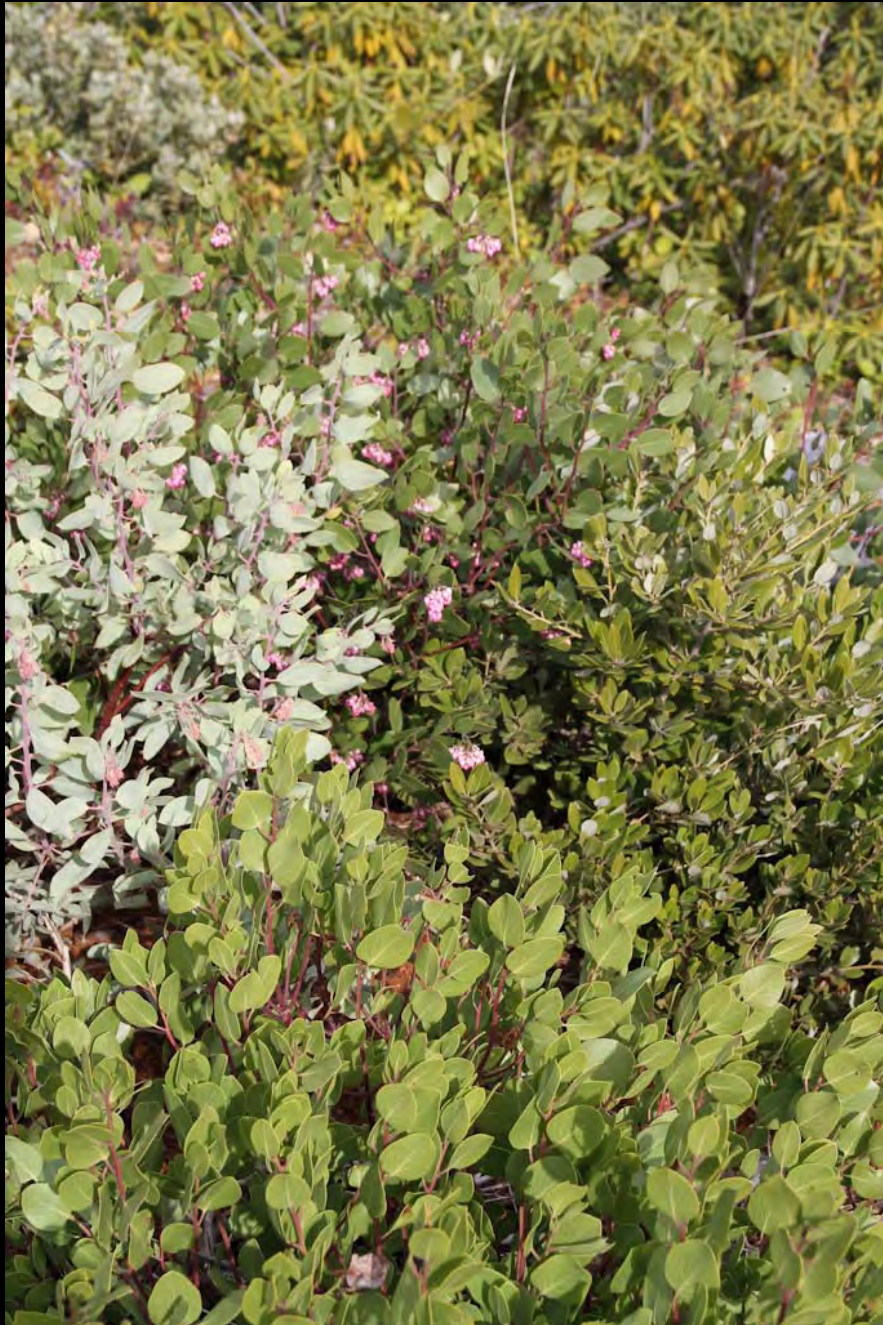
Arctostaphylos
viscida



Arctostaphylos hispidula

Arctostaphylos
hybrid
population -
Sandy, OR





Mixed
Arctostaphylos

Oregon
Mountain mix





Wild Oregon
wolf

Arctostaphylos
patula & Mt.
Hood from the
east





Arctostaphylos patula with A. columbiana



Manzanita with
a view

Arctostaphylos
glandulosa



Arctostaphylos
glandulosa





Arctostaphylos
glandulosa

Arctostaphylos
glandulosa
with
Vaccinium
parvifolium





Vaccinium
parvifolium

Vaccinium
ovatum – red
form



Arctostaphylos
viscida x 'Red
Cent'





Umbellularia
californica

Styrax
officinalis var.
vivipara



Cercis
occidentale
with Rhamnus
californica ssp.
tomentella





Rhamnus
californica ssp.
tomentella SBH
7451



Rhamnus californica ssp. *occidentalis*

Garrya
elliptica 'James
Roof'





Garrya buxifolia

Garrya
buxifolia



Lithocarpus
densiflorus
var. echinoides





Lithocarpus densiflorus var. *echinoides*



Mahonia dictyota



Prunus ilicifolia

Prunus
ilicifolia



Ribes
speciosum
'Rana Creek'





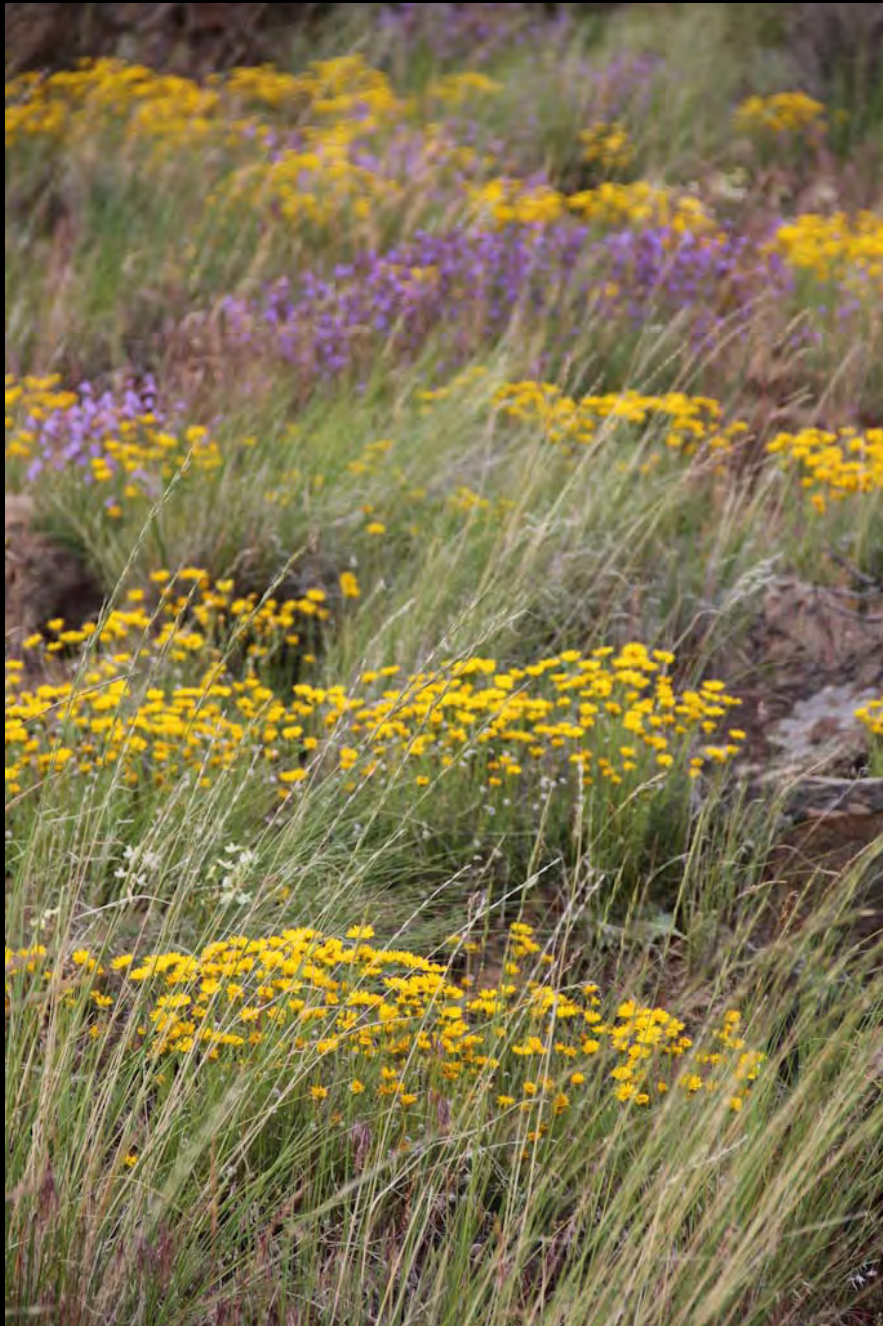
Ribes
speciosum
'Rana Creek'



Ribes x gordonianum

Ribes
malvaceum –
in December!





Mixed desert
spring
ephemera

Eriophyllum
lanatum
'Tekilma Gold'



Asclepias
cordifolia





Lomatium columbianum



Lomatium
columbianum



Lomatium columbianum

The silver garden





Epilobium illinoisensis

Sedum
spathulifolium
'Serpentine
Point'





Nolina
microcarpa



Yucca rostrata

Yucca rostrata
'Sapphire
Skies'



Yucca
recurvifolia
'Margaritaville'





Choisya dumosa x



Opuntia
polyacantha
hybrid – Imnaha
Canyon



Baccharis pilularis

Baccharis
pilularis





Dorycnium
hirsutum



Biological
control

Biological control





Biological
control

Mimulus
'Cowardly
Lion'





Mimulus 'Tempting Tangerine'



Mimulus - unnamed



Zauschneria septentrionalis 'Fiddler Green'

Zauschneria
'Wayne's
Silver'





M Financial Building green roof in Portland



Von Schlegell garden



Zauschneria
canum
'Catalina'

Iris
chrysophylla



Iris innominata





Iris douglasiana
– Bandon strain

Iris x PCI





Pacific Coast
Hybrid Iris
'Sauvie Copper'



PCI collection - Chelsea



Iris x PCI



Blue oaks, *Quercus douglasii*, in the landscape

Quercus
sadleriana





Oxalis oregana



Polypodium
californicum

Trillium
kurabayashii
'Black Spot'





Asarum
marmoratum



Cyclamen hederifolium [various leaf forms]



Cyclamen hederifolium

*Polystichum
munitum* near
Lolo Pass





Lysichiton americanus



Lysichiton
americanus

Lysichiton
americanus





Nerine
bowdenii



Grevillea
victoriae
'Murray Valley
Queen'

Hypericum
olympicum
var. uniflorum
'Citrinus'





Halimium
lasianthum
'Sandling'

Cistus x
purpureus
'Alan Fradd'





Beautiful surroundings like these can be yours forever!

What must you do to enjoy them? The answer lies in a special kind of knowledge.

This book will help you gain the knowledge that leads to everlasting life.

Paradise?



Do plants look like us or we like they?