



Shutterbug Times

Official Newsletter of the Olympia Camera Club

Olympia, WA

Established in 1935

March 2018

www.olympiacameraclub.org

Volume 83, Issue 3

Find us on Facebook: www.facebook.com/groups/OlympiaCameraClub



In this issue:

- President's Corner p. 2
- Note from the editor p. 2
- Monthly Meeting Topics p. 3-4
- April Field Trip p. 5
- NPPNW p. 5-6
- Puyallup Spring Fair p. 6
- June Field Trip p. 7
- Motel Info June Field Trip p. 8
- New Member Profile p. 9
- Member Profile p. 9-10
- Histograms p. 10-11
- My Trip to Tibet p. 12-15
- 2018 Scavenger Hunt p. 16
- Membership Report p. 17
- Thurston Co. Fair p. 1
- March Business Mtg Minutes p. 18-19
- Spokane PSA Photo Seminar p. 19
- Member Gallery p. 20
- PSA p. 21
- Dates to Remember & misc. p. 21
- Upcoming Meetings p. 22
- Executive Committee p. 23
- Committee Contacts p. 23

President's Corner - Scott Wood

As much as I like to use this space each month to talk about photography and to hopefully motivate people to grab their cameras and get out and shoot more, this month I want to use it to take care of a little bit of club housekeeping.

As I write this we are just entering into March and I want to take just a moment to remind those that haven't renewed their annual membership that our memberships run on a calendar year and were due at the first of the year. We understand that there are a number of reasons why people might not have renewed yet, we all get very busy through the New Year and things sort of slip through the cracks. If you are a member, but haven't renewed for 2018, you can take care of that at any of our regularly scheduled meetings or by visiting our website,

www.olympiacameraclub.org and you will be good to go until next year.

If you have been a member in the past but aren't planning on renewing we would like to know why. We don't want to pry, but if there is something we can do better, or we haven't met your expectations we want to know. We try very hard to serve our members and if we don't know if we are doing something wrong we certainly can't strive to make it right. If there is something that we have let you down on please let me know, you can email me from the address at the end of this newsletter.

Speaking of wanting to serve our membership leads me into the second half of my message this month. The Olympia



Camera Club is a volunteer-based organization. All of our officers, board members and committee chairs are volunteers and serve with the desire to make the club better and to help photographers of all skill levels. The reason that I bring this up is that we elect new officers at our annual banquet in June. Over the next number of weeks we will start the process of forming a nominating committee which will work on selecting a slate of candidates for our elected positions as well as identifying people who would like to serve on the various committees that keep the club running. These positions are open to any club members; there is no need to "move through the ranks" so to speak. If you have a desire to help shape the future of the Olympia Camera Club please reach out to me via email and we can go from there.

Ok, with all that housekeeping out of the way, spring is almost here so get out and shoot. ☺

Scott

Note from the Editor

We would love to showcase some of your images in the newsletter and hear about the places you have discovered. Please consider sharing through an article and your images.

Please send all submissions to newsletter@olympiacameraclub.org.

Pam Hoaglund, Editor

Monthly Meetings

All meetings are held at

Capital High School, Pod A
2707 Conger Ave NW
Olympia, WA 98502

Fundamentals of Photography

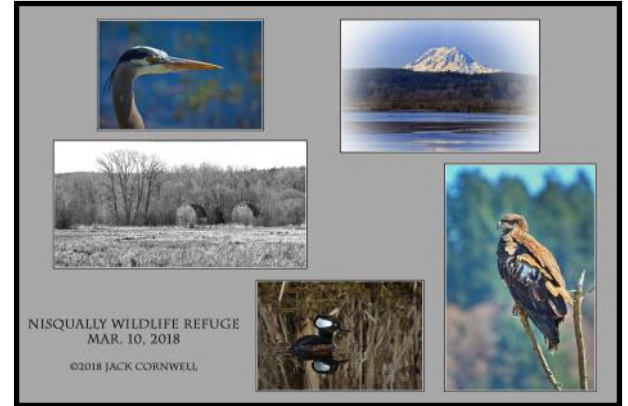
March 13, 2018

7-9 pm

Tonight's presentations will have two topics.

1st presentation will be by Jack Cornwell who will demonstrate how he uses Photoshop Elements (PSE) to make composites and collages.

2nd presentation will be by Steven Lawrence using film and digital, black and white techniques for Street Photography. He will explain his philosophy of doing Street Photography, his camera tools and general guidelines which make him unobtrusive and "invisible" for the most part while taking photos of people.



David Parker, Coordinator

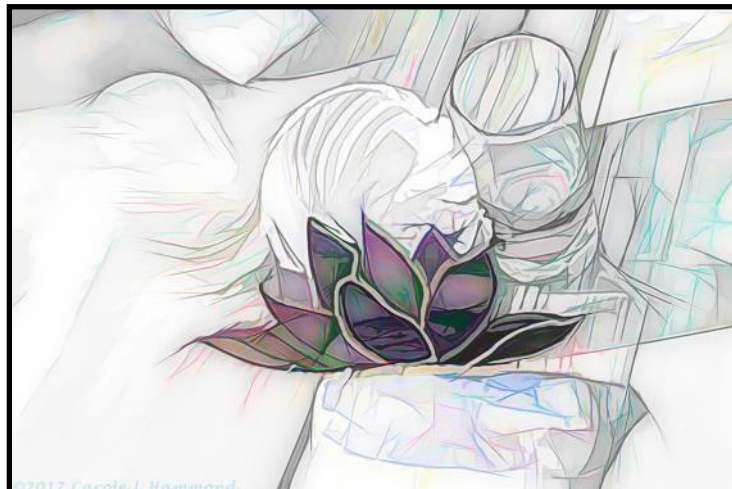
Practical Photography

March 20, 2018

7-9 pm

At this month's Practical Photography meeting, Carole Hammond will show us how she uses Topaz software to compliment her use of lenses and other techniques to produce creative images. A few months ago Carole showed us how she uses many different techniques and creative lenses to make her images, this month she will continue the creative process by giving us a primer on Topaz Software. Many of us were amazed by her creative images from her first presentation - you don't want to miss this one!

Bruce Livingston, Coordinator



**General Meeting
March 27, 2018
7-9 pm**

Please join the Olympia Camera Club at its March general meeting when our own Scott Wood will lead a presentation on severe weather photography.

Scott will cover a number of topics during his presentation. We will discuss the anatomy of a thunderstorm, techniques used to capture images of lightning, gear that is needed to capture images of lightning as well as compositional elements that help make images of severe weather more impactful.

Scott will also discuss why he got into storm chasing and why he continues to do it today as well as share a number of images that he has created over almost 30 years of severe weather photography.

We hope to see you at what promises to be an informative and entertaining evening.

Meredith Rafferty, Coordinator



April Field Trip April 21, 2018

by Bruce Livingston

The April Field Trip will take us to Bottle Beach near Westport to photograph shorebirds. This is an almost annual field trip for the club, and if you enjoy wildlife photography, this is a must do. This year the Grays Harbor Shorebird Festival begins April 27th thru the 29th. In order to take advantage of the best tides (we want to photograph on an incoming tide), the weekend before the Shorebird Festival (April 21st) offers the best times. This will be a later-in-the-day field trip, since the high tide is at 7:02p.m. and sunset that day is at 8:13p.m. These times will offer us great late afternoon light as we photograph shorebirds on the incoming tide.

Let's plan to meet at the parking lot near 5 Guys Burgers where the "old" El Sarape restaurant used to be at 2:30 p.m. and we will carpool to Bottle Beach at 2:45 p.m., and arriving at Bottle Beach by about 4:00 p.m. That should give us plenty of time to set up on the beach and await the birds as they move closer to us on the incoming tide.

What to bring: Camera, telephoto or telephoto zoom lens, tripod, rubber boots, rain gear, warm clothes, food and water and a little patience. If all goes well, the birds will be very close along the shore.



Nature Photographers of the Pacific Northwest

by Colleen Easley - www.nppnw.org

The spring meeting of NPPNW will be April 7 in the McGuire Auditorium at Warner Pacific College in Portland, OR. We will open the doors at 8:30 AM, and the program will begin at 10 AM. The invited speaker will be Jack Graham under the generous sponsorship of Fuji-film. Jack is a landscape and nature photographer, workshop leader and author with more than 25 years experience. He is a Fuji X-Photographer and contributor to magazines such as *Landscape Photography* and *Outdoor Photographer*. Treat yourself to Jack's website at <https://jackgrahamphoto.com>.

Jack's three presentation titles are:

"Use Depth and Perspective to Create Emotion in Your Images"

Depth and perspective involves the dimension of objects and the special relationship between them. On computer screens and in prints we are viewing images at 2-dimensional representation in a 3-dimensional world. We'll discuss how to make our images look more 3-dimensional by adding a sense of depth and using perspective to create highly emotional images. Perspective controls where our eyes focus when we view images and has a strong influence on how our images become impactful as well. Being consciously aware of this and using good control of the photographers' perspective and depth when making photographs makes one's work stand out from another.

(Continued from page 5)

"Becoming an Artist, Not Just a Photographer"

This talk covers topics sometimes not usually thought about such as:

WHY DO I (we) PHOTOGRAPH? ... WHAT A GREAT QUESTION!

Developing a "sense of Place to allow the Place to inspire your images"

Time Management when it comes to Artistic Photography

It's not the equipment

Creativity and Simplification

Our need to create

Social Media... The Good, Bad, and Ugly

Why do I (we) have the need to create?

After the Image... Now What?

"Purpose Driven Travel"

From all points in the United States to Iceland, Norway, Japan and Greenland we'll discuss photographing with a purpose, not just being a tourist. Inspiration images from all locations will be presented. Topics such as planning, logistics and more will be covered. We'll discuss how to best tell your story of your trip through photography. This is a multi-themed presentation of images as well as information.

SENSOR CLEANING: Bring your digital camera bodies to our meetings for specially priced sensor cleanings by Advance Camera. They will professionally clean your sensor, clean the outside of your camera body, and upgrade your firmware if needed while you enjoy the speaker. Cost is \$35 for crop sensors and \$45 for full frame units. A lens mounted to the camera is included in the cleaning. If you have additional lenses you wish to have externally cleaned, the cost is \$15 each. If bringing in your camera for sensor cleaning, please be sure it has a fully charged battery or we won't be able to clean it.

REGISTRATION: Pre-registration is \$10 or \$15 for a couple. Registration at the door is \$5 more. Please visit NPPNW.org for details on competitions, driving directions, and registration.

Time is Running Out!

The Washington State Spring Fair Photo Contest entry deadline is Wednesday, April 11, 2018

Photo Contest Prize Money this year totals \$525, with a total of 34 different awards. In addition, **every image submitted will be displayed.** Over 1,500 people will visit the Tacoma Photographic Society's Spring Fair Photo Exhibition this year, making this a great opportunity to display your work to a large audience and possibly be an 'Award Winning Photographer'.

For Instructions and a Contest Entry Form,

go to tacomaphoto.org and

click on the Pink Tulips.

If you have any questions, or need help with delivering your images, please contact me at your earliest convenience. Please note that I am happy to pick up your images after the fair and hold them for you.

Stan Braaten

Tacoma Photographic Society

photogustan@yahoo.com

Cell (253) 709-6974



A visit to Oregon's



June 2 - June 3



Mayville

When you travel to the Painted Hills, you can see millions of years of history revealed in the layers of mountains of earth, one color at a time. The hills get their name from the delicately colored stratifications in the soil and the yellows, golds, blacks and reds of the Painted Hills are best seen in the late afternoon. Tones and hue may appear to change from one visit to another, as the clay stones differ with ever-changing light and moisture levels. Once you see them for yourself, it's pretty easy to understand why the Painted Hills are one of the 7 Wonders of Oregon.

On June 2 join us for an overnight trip to this special place. The journey will take us through back roads with views of abandoned barns and homes. We will stop in Maville Oregon for a photo op of a semi ghost town then on to Mitchell and the Painted Hills.

After an afternoon at the Painted Hills we will stay overnight in Mitchell at one of the two hotels in town, the Skyhook Motel or the Oregon Hotel. Or you may choose to go down the road about 55 miles to Prineville with more upscale accommodations.



Antelope

One of Skyhook's suites has a kitchen so we can have a spaghetti cook or we might choose to eat in one of Mitchell's diners. Those details can be worked out in the next few weeks.



Shaniko

Sunday morning, we can revisit the Painted Hills then start for home, but there is more along the way. We will pass through the Clarno Unit of the John Day Monument with craggy peaks. Next we will pass through the semi abandoned town of Antelope, once home to the followers of Bhagwan Shree Rajneesh. Our last stop will be the ghost town of Shaniko.

Hotel Information for Painted Hills Field Trip June 2-3, 2018

HOTEL RATES (per night)*			Motel Rates (per night)		
Private Bath	ROOM #1	\$70.00 +\$6.00 tax per night	<p>The SkyhookMotel skyhookmotel.com</p> <p>Suite 1 has Two full size bedrooms, a private bathroom with shower, a living room, and kitchen (no stove) has electric cook skillet,gridel and grill, toaster, microwave, refrigerator, and coffee pot. From \$125</p> <p>Suite 2 Standard suite – 1 Queen Bed From \$82</p> <p>Suite 3 this room has 2 queen beds in them, one in the bedroom and one in the living room area. You also have a shower in the bathroom. From \$94</p> <p>Suite 4 Large suite with two queen beds and private bathroom From \$92</p> <p>Suite 5 Standard suite with sitting area with table and chairs and 1 queen bed From \$84</p> <p>Suite 6 This Deluxe suite is a two bedroom kitchenette, living room and private bathroom From \$125</p> <p>Free WiFi and all rooms have coffee makers and microwave.</p>		
King Bed					
Room #1/2 has adjoining door with Room #1	ROOM #1/2	\$50.00 +\$5.00 tax per night			
No Pets Please!					
Both ROOM #1 and #1/2		\$110.00 +\$12.00 tax per night			
Private Bath	ROOM #2	\$60.00 +\$5.00 tax per night			
Private Bath	ROOM #3	\$60.00 +\$5.00 tax per night			
Shared Bath, 2 Beds	ROOMS #4-8	\$60.00 +\$5.00 tax per night			
(Rooms #4-8 each have 2 Beds)					
Shared Bath	ROOMS #9-10	\$50.00 +\$5.00 tax per night			
Shared Bath	ROOM #11 Queen Bed and set of Bunk Beds	\$70.00 +\$6.00 tax per night			
Kitchenettes (Apartments)	EACH	\$110.00 +\$8.00 tax per night			

New Member Profile: Alaine Schumann

What or who brought you to the club?

I called Rosalind Phillips about photography lessons and she suggested I join this club.

How did you get interested in photography?

My dad loved photography. I inherited his Pentax camera when he got a small digital one to take on his trips around the world.

What kind of photography do you like to do?

I especially like trees, rivers, and scenery.

What equipment is in your camera bag?

I have a Nikon D40 that I purchased around 2006. Recently I bought a bridge camera, a Nikon P900 to avoid carrying so many lenses.

What post processing programs do you use?

Elements and plan on learning that and Lightroom to increase my skills. Mostly cropping in the past and now I am experimenting with the skills I have been exposed to so far.

What do you want to learn from the club?

I want to learn everything that it has to offer. There are so many skilled photographers that are willing to share their knowledge and experience in this club. I feel humble when I compare where I am and where they are.



Member profile: Gene Pardee

What or who brought you to the club?

Shortly after we arrived in Washington State in 2005 while we were talking about photography after church one Sunday morning, Wes Kirkpatrick suggested that I should attend a meeting.

How did you get interested in photography?

When I was eight years old, my cousin, with whom I spent a week each summer, had set up a darkroom for a Boy Scout Merit Badge. Seeing images appear when exposed photo paper was immersed in the developer solution fascinated me.

The following Christmas, I received a Sears Tower Developing and Printing Set. We had a deep coat closet where I set up behind the coats hanging there. The coats between me and the doorway kept it sufficiently dark to be able to use as a darkroom.

What kind of photography do you like to do?

I like photography that generates or has the potential to generate income. I first started earning income from my photography when I was hired to be the official photographer for Lion's Drag Strip (Long Beach CA) in 1965. This was followed by four years as a photographer for the USAF which involved everything from portraits, award presentations, aircraft crashes and much more. I continued throughout my working life working in photofinishing plants, studios, retailing and teaching photography. For many years I have photographed horseback trail rides in California and now in Washington State.

What equipment is in your camera bag?

Nikon D7200, D200 and older bodies supported by Nikon optics including 12-24mm, 24-120mm and 70-200mm f/2.8. Depending on the subject and lighting, I often use fill-in flash with Nikon's SB-800. While they don't fit in my camera bag, I also occasionally use my studio strobes and backgrounds.

What post processing programs do you use?



(Continued from page 9)

I subscribe to Adobe's Lightroom and Photoshop. I also occasionally use Nik and ON1 Effects 10.

What do you want to learn from the club?

I am constantly being inspired and kept up-to-date with input from other members who utilize different equipment and software.



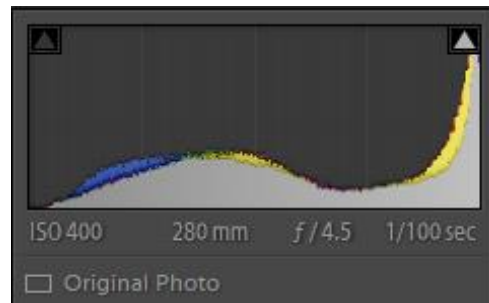
Histograms

by Rosalind Philips

One of my favorite things about digital cameras is the histogram. A histogram is a graph that shows the relative brightness of a scene. The horizontal axis (x-axis) represents the tonal range from pure black on the left to pure white on the right. The vertical axis (y-axis) represents the relative amount of light (brightness) for a given tone. The histogram lets us know whether the image is properly exposed by how the graph is distributed from black to white. An underexposed image will have a graph that is weighted to the extreme left and an overexposed image will be weighted towards the extreme right. A properly exposed image will have a graph that covers the full range like a bell curve. Here are some examples. Example one is an image taken of this year's nesting Great Horned Owl at Nisqually.



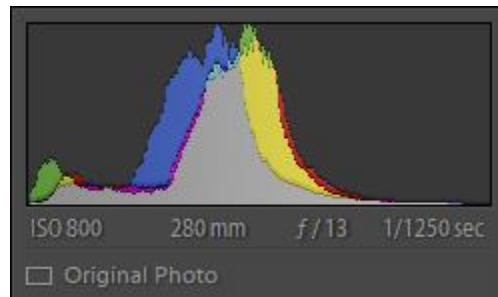
The background is obviously overexposed so we would expect the histogram to have to have a peak on the extreme right as the histogram below shows. There is also a peak near the middle which represents



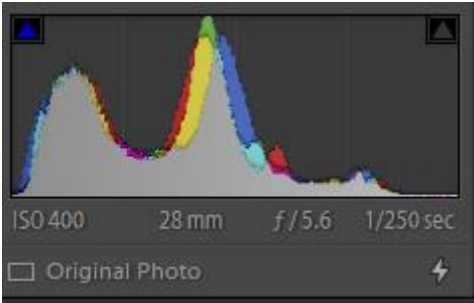
the mid tones. The tailing off of the graph on the left represents the dark shadows particularly in the tree cavity. Let's look at another image.

Example 2 is an image of my cat Ophelia. The histogram is weighted to the left and this makes sense since the cat is mostly black. This is a good exposure.

(Continued on page 11)



Did you notice that most of the histograms have several colors on them? The brightness (luminance) histogram, the one we are interested in, is the grey one. The others represent the different color channels and for the most part I ignore them. In your camera the brightness histogram is usually white.



The term clipping is used to describe the situation when the histogram spikes on the extreme left or right. Your goal, most of the time, is to not have any clipping. I say most of the time because there are situations when clipping is unavoidable. For example night shots will have clipping on the left, hi key shots may have clipping on both sides, a picture of the moon will have clipping on the right.

Example 3 is an image of crocuses on my front lawn. The image is not overly bright or dark, so we would expect the histogram to have a peak pretty near the center with a second peak towards the left due to the shadowed parts of the flowers.

So, the next time you are out with your camera, pay attention to the histogram and see whether it helps you expose your images properly



My Trip to Tibet

by Colleen Easley

In April 2017 I had the opportunity to take a trip to China and Tibet with my friend, Su Zhou. Su lives in Portland and takes a group of photographers to China every year. I had traveled with her once before, so was eager to join this group to see some different parts of China, and also Tibet.

We started the trip with two nights in Chengdu, China. The first day was spent touring around Chengdu to see the WenShu Temple, the Wide and Narrow Alley, Jinli Ancient Street, and People's Park.

That evening we attended the Sichuan Opera which included acrobats, musical instruments, and Bian Lian - the ancient Chinese dramatic art where performers wear brightly colored costumes and move to quick, dramatic music. They wear vividly colored masks, typically depicting well known characters from the opera, which they change from one face to another almost instantaneously with the swipe of a fan, a movement of the head, or wave of the hand.

Chengdu



The next day we visited the Panda Breeding and Research Center. The Chengdu Panda Base was founded in 1987. It started with 6 giant pandas that were rescued from the wild. By 2008, it had 124 panda births, and the captive panda population has grown to 83. It was great fun photographing the very active young pandas. The adults seemed pretty sedentary.

The next morning we flew to Tibet. Our first stop was in Nyingchi which has an elevation of 9,515 ft. This was great because it allowed us to become incrementally acclimated to the higher elevations we'd experience later in the trip. We stayed here for two nights and had a chance to photograph the beautiful flowering peach trees in the area and hike the Biri Holy Mountain.

Nyingchi



From Nyingchi we headed west to Basum Tso Lake. (11,975 feet) We stopped early in the morning for a hike to Tianfu Waterfall. When we reached the lake in the afternoon we walked over a bridge to a small island that had a Lamaist temple built on it. We were free to walk around the island and take photos for a couple hours before heading on to our hotel which was called the Basumtso Holiday Inn. (nothing like a Holiday Inn that we're familiar with) This place ran on generators and they turn off the power at 10 pm.

(Continued on page 13)

(Continued from page 12)

Road to Basumtso



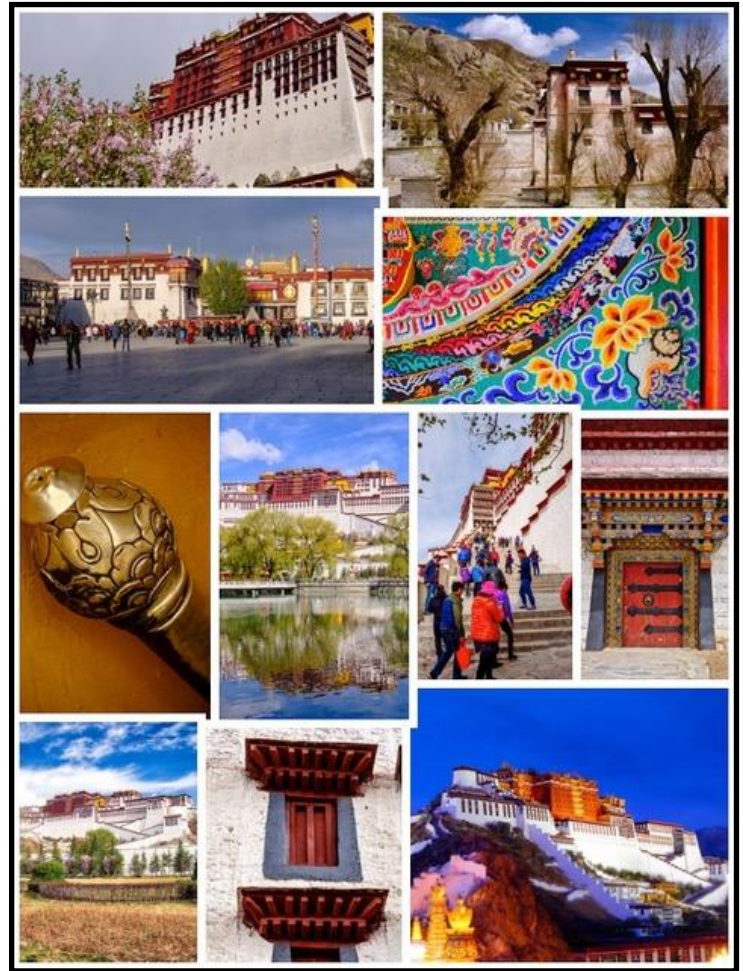
The following day was a full day drive to Lhasa. The roads took us over the Mila Mountain Pass that has an elevation of 16,500. We stopped at the top for photos and a restroom break. There were a couple huge brass Yak statues at the summit as well as vendors selling prayer flags and beads. I was quickly short of breath and developed a slight headache just trying to walk to the restrooms.

The hotel in Lhasa was a wonderful surprise. Su told us it is the second best hotel in Lhasa. It was so beautiful that it made me wonder how there could be one better. We were lucky to have two nights here and then two more after our tour around other parts of Tibet. The elevation here was 11,995. We had done a good job of acclimating to the altitude by the time we reached Lhasa.

The next day we spent the morning touring the Potala Palace. We were able to take photos all around the palace and the outside areas as we climbed the many steps, but photography inside the palace rooms is forbidden. In the afternoon we made a visit to the Sera Monastery where we had a chance to see the monks in very animated debate. In the evening we photographed the Potala Palace at sunset and on into the blue hour.

The second day in Lhasa was spent visiting Longwangtang Park and a couple other temples. We also went to the markets of Barkhor.

Lhasa



When we left Lhasa, we prepared for another long drive over a couple more mountain passes to get to Gyangze. We had several stops in the mountains - one to photograph Yaks and Tibetan Mastiff dogs that were colorfully dressed by their owners to sell photographs.. Cost to have your photo taken with one of the animals was about \$5. I didn't do it, but did sneak a few pics of Chinese tourists who were happy to pay to have their photos taken.

We had lunch in a small Tibetan village at a very "rustic" restaurant and then continued to climb up even higher where we stopped at the Karuola Glacier for photos (elevation 17,716 ft). You really had to bundle up warm if you wanted to get out of the bus here. We also made a stop at Lake Yamdrok. This lake is created by a dam. Prayer flags were abundant throughout the mountains.

Once we got to Gyangze, we settled into the Gyangze Hotel. The next morning we visited the Palcho Monastery and Dzong Castle. In the afternoon it was another

(Continued on page 14)

(Continued from page 13)

bus ride to Shigatse where we visited yet another monastery and stayed in the Tashi Choeta Grand Hotel.

People of Lhasa



In the morning we boarded our bus for the drive back to Lhasa over a different highway than the one we came on. The amazing thing about these bus rides is that they are very strict about making sure you're obeying the speed limit. There are checkpoints you have to stop at along the way, and if you get to a check point too early they can ticket you for speeding. One time on this trip we must have been going too fast because the driver pulled over and we just had to sit for about 10 minutes so he wouldn't get to the next checkpoint too soon.

Sometime in the afternoon before reaching Lhasa, we stopped at a private home for a tour of how a typical Tibetan family lives. This home had 4 rooms; a living room, kitchen, dining room, and another room that had couches around the perimeter but also a lot of Buddhist shrines, so it may have been a worship room, but at night the couches serve as beds. There was also a small gift shop attached to one end of the home. We met the family

that lived here and they served some traditional snacks. I believe there were three generations living here.

Tibetan Family Home



The next day we were supposed to visit Namtso Lake, but when we learned it would be an all day trip on the bus we opted to stay in Lhasa. The reason the trip has become so long is that the government has reduced the speed limit for buses to about 35 mph. Before that speed reduction, you could do 60 mph to get there and it was a fairly doable round trip, but the thought of spending 6 hours on the bus to get a few photos and then 6 more hours to get back to Lhasa just wasn't appealing to any of us.

Instead of the trip to the lake, we spent time walking the perimeter of the Potala Palace, revisited the old town market in Lhasa, and we toured a Buddhist nunnery. All the women in the nunnery shave their heads and when we were there, many were in the temple reading from their holy manuscripts. Others were cutting and rolling strips of paper with mantras or prayers to be placed inside handheld prayer wheels. These wheels are carried by worshippers who are walking around the temples. Every monastery or temple we visited had worshippers walking

(Continued on page 15)

The 2018 Annual Scavenger Hunt and Banquet

Submitted by Rosalind Philips

Here Ye, Here Ye. The annual Scavenger Hunt and Banquet of the Olympia Camera Club will be held on June 26th. Now is the time to start working on the list. Some of the words are challenging; I have confidence you will all have great ideas for images. See you at the banquet.

2018 Olympia Camera Club Official Scavenger Hunt Rules

This year, members will have two ways to participate in Banquet Slide Show entertainment.

Submit one image for each of the 15 words below.

You may take as many images as you like and do as much processing as you like, but you can only submit one image for each word. Please note that some of the words are from the 52-week challenge list. You may submit images that you have already posted for the challenge.

OR

Submit 10-15 of your favorite/best images taken between 6/1/2017 and 6/12/2018. You may do as much processing as you like on the images.

Rules

All images must be JPEGs – no RAW or TIFF images.

The images must be 1024 pixels on the long side.

The resolution should not exceed 72 dpi.

Scavenger Hunt Images. Name your images as

Sxx_Name_word.jpg where

S means scavenger hunt, xx is the number of the word and word is the category. For example, an image submitted for the 5th word Plaid would be named

S05_RosalindPhilips_Plaid.jpg.

Please include a list of your images with descriptions.

Favorite/Best of 2017-18 images. Name your images as Bxx_Name_ImageName.jpg .

B means Favorite/Best of 2017-18, xx is the number of the image, Name is your name and ImageName is the name of the image. For example the eighth image I submit would be named,

B08_RosalindPhilips_BergyBit.jpg.

Please include a self Identification Image as your 16th image.

Please burn your images to a CD or DVD or thumb drive.

Images are due no later than Tuesday, June 12, 2018 at the Fundamentals Meeting. You can bring your images to the meeting or mail them to Rosalind Philips, 4643 Indian Summer Dr SE; Olympia WA, 98513.

We will watch the two slide shows at the Banquet on

June 26th. Please contact Rosalind at RosalindPhilips@comcast.net or at 360-790-2814 with any questions.

2018 Scavenger Hunt

One of our members requested that the scavenger hunt words be posted earlier in the year so there is more time to hunt for them. So here is the list. Images are due on June 12th at Fundamentals Group. There will be an article in the April newsletter with more details. The information has been updated on our web page. Please contact Rosalind Philips with any questions.

Word List

Num	Category
01	complimentary colors
02	orange
03	spiral
04	towering
05	leading lines
06	mystical
07	trucks
08	light trails
09	happiness
10	clouds
11	pets
12	space
13	abandoned
14	pink
15	odd
16	Self Identification



MEMBERSHIP REPORT

by Colleen Easley

March is the month that we drop non-renewed members from our rolls. As of this writing, there are 51 people who have not renewed from last year.

Once we drop those members, we will be left with 114 members. We have 2 new members to welcome this month:

Klaus Schilde
Jo Perryman

If you are on the list to be dropped this month but wish to remain a member, please pay your dues before March 15.



Welcome!

We are glad you are here!

THURSTON COUNTY FAIR - AUGUST 1-5

by Dale Easley

Early Fair Information

It's time to start thinking about the Thurston County Fair coming up in August. It's a good idea to start tagging any photos now that you may wish to enter in the fair this year. It makes it easier when the time comes for choosing which ones to enter.

The Theme this year is "Have an Egg-citing Time at the Thurston County Fair". The Mascot is Henrietta Hen. The Fair Theme is a seldom entered category — not much competition. Food for thought.



Olympia Camera Club Board Meeting March 6, 2018 at 6:30 pm Casa Mia Restaurant, Olympia

Officers and Members Present

Scott Wood, John Damitio, Meredith Rafferty, Tammy Mandeville, Dale Easley, Colleen Easley, Bruce Livingston, Frank Townsend, Kim Buechel, Rosalind Philips, John Gerech, Gene Pardee, Linda Pardee, Rene Conger. Meeting was called to order at 6:30 pm. by President Scott Wood.

February Minutes

Bruce Livingston moved to approve the minutes of the February 6th Business Meeting. John Gerech seconded the motion. MSC Unanimous.

Old Business

Meredith Rafferty discussed Treasurer Report procedures. It was decided that a motion was not needed to accept the report.

Treasurer's Report

John Damitio reviewed the Treasurer's Monthly Report.

Treasurer's Report March 6, 2018	
February 1 - February 28, 2018	
WSECU Checking	
Starting Balance (2/1/18)	\$1,293.37
DEPOSITS	
Income - 2018 Dues	686.17
Total Deposits	686.17
EXPENSES	
Technology - Adobe Subscription	10.87
USPS	96.00
Olympia School District III	180.00
Total Expenses	286.87
Ending Balance (2/28/18)	\$1,692.67
WSECU Savings	
Starting Balance (2/1/18)	\$3,388.08
Dividend Interest	0.26
Ending Balance (2/28/18)	\$3,388.34
PayPal Balance	\$ -
Total Balance	\$5,081.01

Membership Report

Colleen Easley reported that we have a total of 165 members. Colleen then led a discussion on the 50 members who have not currently paid their dues. It was decided that phone calls will be made to those members who have not responded to our emails.

President's Report

Scott Wood will be writing an article for the Newsletter about how our club is run by volunteers and how mem-

bers have many opportunities to choose from to volunteer.

Community Liaison/Historian

Linda Foss did not attend. Nothing new to report.

General Meeting Program

Meredith Rafferty reviewed upcoming speakers. Scott Wood will be doing a presentation on Storm Photography and Colleen Easley will do a presentation on China.

Digital Imaging Group

John Gerech had nothing new to report. John then led a discussion on State Laws banning weapons of any kind on School property.

Fundamentals Program

David Parker did not attend. Meredith Rafferty reviewed the next meetings' two part program. Part one will be a presentation by Jack Cornwell on making a collage. Part two will be a presentation by Steven Lawrence on black and white street photography.

Practical Photography Program

Bruce Livingston reported that Carole Hammond will do a presentation on Topaz Software. Bruce then led discussion on ideas for the April and May meetings.

Equipment

Rosalind Philips purchased a Lavalier microphone and 9 Volt batteries for the amplifier. All the equipment is working well.

Newsletter

Pam Hoaglund did not attend. People are encouraged to send articles and images in for the Newsletter.

Webmaster Report

Colleen Easley continues to update the calendar with monthly meetings on the front page. Colleen led a discussion on Flickr.

Field Trip Report

Norm and Kay Ott did not attend. Bruce Livingston will fill in as Field Trip Chair for the rest of the term. Saturday March 10th will be the next field trip to Nisqually National Wildlife Refuge. April's field trip will tentatively be to Bottle Beach - more info will be coming. May's field trip will be with Dennis Plank to do macro photography at the Violet Prairie Farm. June's field trip will be on June 2nd and 3rd to Mitchell, Oregon and the Painted Hills.

(Continued from page 18)

NWCCC

Frank Townsend reported that the NWCCC Board Meeting will be this upcoming Saturday.

NWCCC Traveling Prints

Kim Buechel said voting has been going well and we only have two more clubs' photos to judge.

NPPNW

Colleen Easley reported that the spring meeting will be April 7th in Portland at Warner Pacific College. The speaker will be Jack Graham from Fujifilm. Colleen led a discussion on the conference and where to stay.

PSA

Pam Hoaglund did not attend. Scott wood reported that Pam will be submitting the Newsletter to the PSA Newsletter Competition.

New Business

Scott wood called for a Nominating Committee Appointment.

Adjournment

Bruce Livingston moved to adjourn the meeting, John Gerech seconded, MSC Unanimous.

Submitted by Secretary Tammy Mandeville

PSA Inland Empire Chapter - Spokane

The Inland Empire Chapter of PSA is having their Spring Photo Seminar:

Dates : 14-15 April, 2018

Where: Spokane Community College

Presenter: Darrell Gulin, see his webpage at www.gulinphoto.com

Cost: for two days plus lunch - PSA member \$85

Nonmember \$95

Visit the Chapter website for details and registration at: www.psainlandempire.org



Images from the Painted Hills, OR



Photographic Society of America (PSA)

PSA is a worldwide organization for anyone with an interest in photography. Founded in 1934, the Society is for casual shutterbugs, serious amateurs, and professional photographers.

Individual digital membership is \$45 a year.

Membership offers a wide variety of services and activities:

1. Monthly Journal
2. Online photo galleries
3. Image evaluation
4. Study groups and courses
5. Competitions
6. Annual Conference
7. Discounts on photography-related products/services
8. PSA travel aide

For a complete overview of membership benefits go to www.psa-photo.org



Dates to Remember

12 March Digital Imaging
 13 March Fundamentals Photography Meeting
 20 March Practical Photography Meeting
 21 March Koffee Klatch
 27 March General Meeting

3 April Board Meeting
 5 April Items due for newsletter
 7 April NPPNW meeting in Portland, OR
 14-15 April Conference in Spokane
 21 April Bottle Beach Field Trip

Sizing Images for Newsletter

Format: jpeg, max quality
 Dimension: 1024 pix long side
 Please keep images 3MB or less
Please Watermark your image!

All photographs in this newsletter are under copyright protection. They may not be used without permission from the individual photographers.

Please submit articles and photographs to:

newsletter@olympiacameraclub.org

Deadline for articles and images for March newsletter is 8 March at midnight.

March 2018

Olympia Camera Club Monthly Meetings

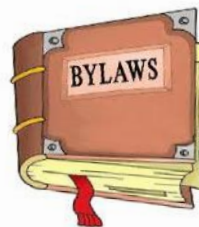
Business Meeting -

Monthly on the First Tuesday of the Month

Tuesday, **April 3, 2018** from 6:30pm to 8:30pm

Open to all. Join us before the meeting at 5:30pm for dinner.

Contact: Scott Wood, President



Fundamentals of Photography

Monthly on the Second Tuesday of the Month

Tuesday, **March 13, 2018**

Program: Two presentations: How to do a collage in Photoshop Elements by Jack Cornwell and Street Photography by Steven Lawrence

Contact: David Parker, Chair



Practical Photography (Formerly Advanced Photography)

Monthly on the Third Tuesday of the Month

Tuesday, **March 20, 2018**

Program: Carole Hammond will present on using Topaz software in her creative images

Contact: Bruce Livingston, Chair



General Meeting

Monthly on the Fourth Tuesday of the Month

Tuesday, **March 27, 2018**

Program: Scott Wood will present on severe weather photography

Contact: Meredith Rafferty, Vice President



Koffee Klatch Meet up, Every Other Wednesday Morning from 9am to 11am

Panera's Bakery, 2525 Capitol Mall Drive SW, Westside of Olympia

Open discussion about photography and other topics of interest

Contact: Linda Foss, Chair



Executive Committee

President

Scott Wood

Vice President

Meredith Rafferty

Secretary

Tammy Mandeville

Treasurer

John Damitio

**Immediate
Past President**

Bruce Livingston

Newsletter Editor

Pam Hoaglund

Associate Memberships



NORTHWEST
Council of Camera Clubs



Committee Chairs

Community Liaison

Linda Foss

Equipment Custodian

Rosalind Philips

NWCCC Traveling Prints

Kim Buechel

Field Trip Coordinator

Bruce Livingston

Membership

Colleen Easley

NPPNW Liaison

Colleen Easley

Practical Photography

Bruce Livingston

Newsletter Editor

Pam Hoaglund

PSA Representative

Pam Hoaglund

Thurston County Fair

Colleen and Dale Easley

Historian

Linda Foss

Digital Imaging Group

John Gerecht

Fundamentals of Photography

David Parker

NWCCC Liaison

Frank Townsend

Scavenger Hunt

Rosalind Philips

Webmaster

Colleen Easley

Social Committee

Linda Pardee

Olympia Camera Club
P.O. Box 13333
Olympia, WA 98508-3333