



PUBLIC INFORMATION
COMMITTEE
AGENDA LETTER

Secretary of the Board of
Directors

4699 Hollister Avenue,
Goleta, CA 93110
(805) 879-4621

Department Name: Office of the
General Manager
For Agenda Of: September 15, 2015
Estimated Time 15 MIN
Continued Item: No
If Yes, Date From:

TO: Committee Members

FROM: Department: Office of the General Manager
Contact Info: David Matson, Assistant General Manager

SUBJECT: Demonstration Gardens Outreach Plan Update

Legal Concurrence:

As to form: N/A

Recommended Action:

Receive a report on materials completed under the Goleta Water District (District) Demonstration Gardens Outreach Plan, and provide direction to staff as appropriate.

Summary Text:

In order to help customers convert existing high-water use landscaping to waterwise gardens, the District hosts the Demonstration Gardens on the grounds of the Goleta Water District Office. The gardens support the Smart Landscape Rebate Program by providing customers with design ideas, and model Water Shortage Emergency mandatory water use restrictions by showing best practices.

In order to increase the usefulness of the Demonstration Gardens to customers, the Outreach Plan reviewed by the Public Information Committee on January 20, 2015 proposed a variety of print and online materials to make the gardens more accessible to customers. These materials increase the ability of the District to use the Demonstration Gardens to share public information and education components.

The following materials are presented for the Committee's review:

- Large site signs for each of the garden rooms featuring an illustrated map and plant list.
- Information sheets for each garden room to be made available at the front desk or on the District website for download by customers to use when touring the garden.
- A dedicated website subsection for the Demonstration Gardens featuring a link to dedicated subpages for each of the seven garden rooms, with advice on planning, installing, and maintaining a garden.
- An example subpage for each garden room featuring an illustrated map, plant list, and description of various water saving features.

The new website and print materials will be promoted through a press release, the District Facebook and Twitter accounts, billing statement messages, and the newsletter.

Next Steps

Upon approval of the materials, a print brochure (also available for download) containing an illustrated map, plant list, and overview of each of the seven garden rooms, with advice on planning, installing, and maintaining a garden will also be developed from the materials.

Background:

As part of the District Sustainability Plan, in 2013 the District restored and enhanced the Demonstration Gardens, and added the Edible Garden. A comprehensive public outreach effort began in fall of 2013, with Phase I including signage, a website, and a plant list for the Edible Garden. Phase II of the Outreach Plan, focused on the six remaining garden rooms, was delayed by the shifting of staff resources due to the drought, and was approved by the Public Information Committee on January 20, 2015. An article on the Edible Garden was featured in *Edible Santa Barbara*, and materials were available at Earth Day and other public outreach events.

Fiscal Analysis:

The outreach materials developed are included in the FY 2015-16 Budget.

Attachments:

Attachment 1: Demonstration Gardens Outreach Plan Materials Update.

Attachment 2: Demonstration Gardens Outreach Plan Materials.

Authored By:

KK Holland, Principal Policy Analyst

David Cowan, Chief Communications Administrator

Attachment 1

Demonstration Gardens Outreach Plan Materials Update



Demonstration Gardens Outreach Plan Update

September, 2015



Update on Demonstration Gardens Outreach Plan

- The District hosts the Demonstration Gardens on the grounds of the Goleta Water District Office to help customers create beautiful, waterwise gardens.
- The gardens feature waterwise plants and efficient irrigation techniques such as mulching, drip irrigation systems, and low-profile sprinklers, sustainable drainage and rain catchment systems such as a rain barrel and hugelkultur, which utilizes a hill mound that acts like a sponge to store and release rainwater.
- An Outreach Plan Update designed to increase customer access to the gardens through online and onsite materials was presented to the Public Information Committee on January 20, 2015. Those materials proposed in that presentation have now been completed, including:
 - Illustrated garden maps and plant lists.
 - Site Signs for each garden.
 - Information Sheets for each garden.
 - Sample webpage.



Demonstration Gardens Info Sheets



Welcome to the Goleta Water District Demonstration Gardens

Outdoor water use makes up a large percentage of water consumption by District customers. In fact, upwards of 50% of water use in the typical District home is used for keeping thirsty gardens and lawns quenched. Rethinking what and how we plant is a great way to reduce water usage. To help customers create beautiful gardens that conserve water, please visit our Demonstration Garden on the grounds of the Goleta Water District Office, located at 4699 Hollister Avenue, Goleta (across from San Marcos High School).

Plants within the demonstration grounds have been grouped according to water use in a series of "rooms", including: Perennial Border, Mediterranean Garden, Exotic Garden, Traditional Garden, Southern California Native Garden, Desert Garden, and the new Edible Landscape Garden. The gardens feature waterwise plants and efficient irrigation techniques such as mulching, drip irrigation systems, and low-profile sprinklers, with sustainable drainage and rain catchment systems such as a rain barrel and Hugelkultur, which utilizes a hill mound that acts like a sponge to store and release rainwater.

Information about the Demonstration Gardens is available at the front desk of the Goleta Water District Office during regular business hours. In addition, the following pages feature in-depth discussions each of the seven garden types, and a detailed pamphlet for download and printing can be found at www.GoletaWater.com/demonstrationgardens.

For additional resources on water conservation, including educational videos, information on water efficient irrigation, and a landscape watering calculator, visit www.WaterWiseSB.org.

Garden Planning Tips

- Think about your irrigation system as part of your planning. Efficient drip systems are more easily installed as your plant.
- Consider a Laundry-to-Landscape graywater system. Certain plants do better with graywater and designing the appropriate mix for your site will lead to a more successful garden.

Follow us on social media:



Designing a Waterwise Garden

Having a waterwise garden does not mean you have to replace all of your existing plants with cacti and succulents. When you combine water efficient plant species with strategic gardening techniques, such as grouping plant types according to soil, water, and sunlight needs, you can still have beautiful and lush gardens that get by on rainfall alone.



When designing a water efficient landscape, remember to:

- Focus on one section at a time, rather than adding individual plants haphazardly.
- Layout a simple garden plan. If using drip irrigation, this is easiest to add after plants are in the ground. Otherwise make sure you consider where irrigation equipment needs to be placed.
- Group plants according to their water needs.
- Clear and remove any debris, weeds and trash from the site, and determine which plants, if any, will remain.
- Plant in the fall and winter during the cooler, wetter season (October through March).
- Plants will grow so remember to space them according to the recommendations provided by the nursery.
- Mulch! It's the secret to keeping plants healthy and hydrated. Mulch is available for free from Santa Barbara County at 4430 Calle Real Santa Barbara, CA. Reapply every 3-6 months as mulch breaks down.
- Once you have installed your garden make sure to pull out the plants you don't want in your garden – every drop of water your weeds use is a drop of water that is no longer available for the plants you do want to stick around.

Want to maximize your conservation?

- Not all areas need to be heavily planted. Consider mulching over lawns, or reducing their size, and then focus on planting along the edges.
- Grade your yard before you plant to capture rainfall, or add infiltration basins, bioswales, and rain barrels to reuse rainwater.
- Install a Laundry-to-Landscape graywater system to reuse water for sustainable landscape irrigation.

We can help!


The District has rebates available for waterwise plants, efficient irrigation equipment, Laundry to Landscape components and more under the Smart Landscape Rebate Program. Click [here](#) or call (805) 964-6761 ext. 642- to learn more.

REMEMBER: Always call 811 before your dig to make sure you don't disturb any utility lines.






Demonstration Gardens

Info Sheets



GOLETA WATER DISTRICT
EDIBLE GARDEN
A WaterWise demonstration landscape

The **Edible Garden** area is the newest addition to the District Demonstration Gardens. It features water-wise edible plants and trees, and a variety of innovative conservation techniques such as sustainable drainage and rain catchment systems, including a Hugelkultur (pronounced "hoogal-culture") bed. The goal of the garden is to model water-efficient edible landscaping ideas that can be implemented by customers at home.

The low maintenance plants and trees featured in the Edible Garden are easy to grow and well-suited for the local climate. Rainwater from the roof is fed through gutters into the rain barrel tank and then used to irrigate the garden. Rainwater from the roof is also channeled into a dry pond, known as an infiltration basin, on the other side of the garden. The garden also features various mulching and water retention techniques as well as permeable surfaces to further prevent storm water runoff and minimize the need for potable water for irrigation.


There are many benefits to planting a sustainable and water-wise edible garden at your home, including:

- Improving water conservation and reducing your water bills.
- Reducing food bills while enjoying eating and sharing the food that you grow.
- Enhancing health with local, high quality food options.
- Reducing the carbon emissions that are associated with the transportation of food to your local store.

Visit at www.GoletaWater.com/demonstrationgardens to download an Edible Garden information PDF that includes an FAQ, Site Map, and Plant List and Features

Follow us on social media:








GOLETA WATER DISTRICT
PERENNIAL BORDER
A WaterWise demonstration landscape





The **Perennial Border** area plants thrive in full sun with minimal irrigation. They were selected as much for foliage contrast and form as for flower color – the foliage contrast will make the garden interesting even when it is not flowering. You can also use complementary colors to create a highpoint. A perennial plant is a plant that lives for more than two years. In general, they grow and bloom over the spring and summer, die back every autumn and winter, and then return in the spring from their rootstock. Planting a border of perennials is often used to frame a building or walkway, or serve as the focal point of a larger bed. They can be used to define path and bed boundaries, soften hard edges, and usually look best in front of a solid backdrop of vegetation, a vine-covered fence, or a wall.

In general, perennial edgers are chosen because they flower for a long time and suffer minimal disease and pest problems. Another important factor is choosing the right plants for the right spaces. To keep plants looking their best and to promote new growth, blooms should be removed regularly. The Perennial Border plants fall into the average low water-using category of the garden.

In summary, perennial borders can be used to:

- Frame a building or walkway, soften hard edges and accentuate bed lines.
- Add texture and color to your garden.

And are often chosen because they:

- Do not have to be re-planted each year.
- Require minimal maintenance.
- Use less water depending on the species planted.

Visit at www.GoletaWater.com/demonstrationgardens to download a Site Map and Plant List PDF for the Perennial Border area.

Follow us on social media:








Demonstration Gardens

Info Sheets



GOLETA WATER DISTRICT

MEDITERRANEAN GARDEN

A WaterWise demonstration landscape



The **Mediterranean Garden** area borders the parking lot of the Goleta Water District's offices and contains many different elements, including palm trees, ground cover, and a water feature in the form of a fountain that is turned off during water shortages. Loved for their casual elegance, Mediterranean gardens are inspired by the coastal areas of Italy, Spain, and France. Plants with silver and gray foliage compliment the cool and peaceful feel of the created environment, which are a mix of long-living evergreen shrubs and less permanent perennials and ground covers.

Often, Mediterranean gardens are chosen because they fit the architectural design of the home. However, this landscape design can also be used with homes of relatively neutral design, such as the ranch style homes that are commonly found in the Goleta Valley and the greater Santa Barbara County region.

Mediterranean gardens typically require less material and water than a typical lawn. Although not included in the District's Demonstration Garden, Mediterranean gardens often include a culinary herb garden, adding a functional edible component that benefits the resident.

Visit at www.GoletaWater.com/demonstrationgardens to download a Site Map and Plant List PDF for the Mediterranean Garden area.

Follow us on social media:



GOLETA WATER DISTRICT

EXOTIC GARDEN

A WaterWise demonstration landscape



The **Exotic Garden** area is located at the corner of Hollister Avenue and Puente Drive. This garden introduces unusual water efficient plants that are less commonly seen in this region, with bright, bold colors. Orange, red, and yellow flowers and matching foliage can add depth and contrast to your waterwise landscape. Many of the species can be purchased at professional, full-service nurseries, or specially ordered if not found locally.

The bright colors of exotic plant species are a valuable asset when designing a yard with street-facing segments. Gardens that are more prominent from the curb when viewed by passing cars may use different design elements than a typical garden that is meant to be appealing to persons strolling through its grounds. Our Exotic Garden lies on the intersection of a busy street, making the broad themes and bright colors of our exotic plant species a good selection for a garden that will be viewed from a distance. The garden has also been designed to have year-round interest, and you may notice a shared pigment throughout the garden, as even the foliage has a yellow accent.

The plants in the Exotic Garden are not only low water-using, but extremely easy to maintain. Once established, upkeep is limited to cutting the plants back once a year.

Water efficient exotic plants are:

- Easily seen from further away, making them good candidates for gardens along street curbs.
- Low maintenance species, requiring minimal annual pruning.
- Add color depth to your garden.

Visit at www.GoletaWater.com/demonstrationgardens to download a Site Map and Plant List PDF for the Exotic Garden area.

Follow us on social media:



Demonstration Gardens

Info Sheets



GOLETA WATER DISTRICT
TRADITIONAL GARDEN
A WaterWise demonstration landscape





The **Traditional Garden** area is located on the corner of Hollister Avenue and Puente Drive. The garden is styled toward use around older, or more traditional style homes. The plants selected for this area are similar to plants that have been commonly used in gardens for the last fifty years. In general, they are water thrifty and blend well with established gardens, making them especially appropriate for those interested in maintaining a “traditional garden,” but looking for a low water alternative. By using species showcased in this portion of the Demonstration Gardens, you will be able to replace high water-using plants with more water efficient species. As always, be sure to group plants with similar water needs together, so as not to over-water the new planting.

Of particular importance, our Traditional Garden may help guide your decision on what to do with your pre-existing lawn, a common fixture in yards within our water district. The lawn element, often over-used in traditional gardens styles, has been replaced in our Demonstration Garden with water-saving alternatives, such as mulch.

Other alternatives for maintaining open spaces that use less water include native grasses, permeable hardscape materials, astroturf, or sand. These are good examples of what to do with the part of your yard that has been designed for play or entertainment.

A waterwise landscaper can have a traditional garden that is water efficient. Make sure you pick traditional garden plants that are:

- Low water users.
- Not susceptible to regional pests and disease, which would require an increased usage of pesticides.
- Water-friendly alternatives to traditional grass lawns.

Visit at www.GoletaWater.com/demonstrationgardens to download a Site Map and Plant List PDF for the Traditional Garden area.

Follow us on social media:






GOLETA WATER DISTRICT
CALIFORNIA NATIVE GARDEN
A WaterWise demonstration landscape





The **California Native Garden** area demonstrates plants that are native to our region. Many gardeners prefer to use native plants because they blend well with the natural landscape, provide habitat for local wildlife, and their water needs are compatible with the arid nature of our climate.

Located between the Desert Garden and Traditional Garden areas, the Native Garden borders Hollister Avenue. The plants used in this section of the Demonstration Garden will work well for those who live in more rustic areas with existing native vegetation. Native plants provide habitat for local and migratory birds and act as hosts for beneficial insects that can reduce your dependence on chemical pest controls. Although many people prefer an all-native plant garden, many of these plants can be used with any style of landscape. They are also the best-adapted plants for our local soils, and often need little to no fertilizer or water to look their best.

Why garden with native plants?

- **Use less water** – Plants native to our arid climate have adapted to use less water than many of their non-native counterparts.
- **Lower maintenance** – Native plants will require less water, fertilizer, pruning, pesticides, and general maintenance than many common, non-native garden plants.
- **Less need for pesticides** – Natives have developed their own natural defense against many of the pests and diseases commonplace in their region. This means less garden toxins will make it into our creeks and watersheds.
- **Attract more wildlife** – Research shows that native wildlife prefers native plants.
- **Ecological benefits** – Using native plant species can help create bridges between native areas that have been isolated from other natives by disturbance of the natural landscape.


Visit at www.GoletaWater.com/demonstrationgardens to download a Site Map and Plant List PDF for the California Native Garden area.

Follow us on social media:









Demonstration Gardens Info Sheets



GOLETA WATER DISTRICT
DESERT GARDEN
A WaterWise demonstration landscape



The **Desert Garden** area is located adjacent to the District headquarters building on Hollister Avenue side. The garden is predominated by plants that are most commonly used in arid or southwestern-style gardens. The garden features cacti and succulents, cutting water consumption dramatically as succulents alone use as much as 80% less water than non-native species.



Plants that have adapted to desert landscapes employ a number of water-saving adaptations to stave off water loss in areas with low precipitation rates and harsh desert sun exposure. Succulents, for example, have extensive root systems to collect water that they store in their leaves and stems. Consider using them in larger groupings of one variety for their strong sculptural forms and unusual textures. They should require no supplemental irrigation within two to three years of planting.


Desert gardens typically include:

- **Succulents** – Succulents are great for both indoor and outdoor planting, and come in a wide variety of shapes and sizes.
- **Cacti** – Cacti and agaves can add intriguing sculptural elements to your yard, and range drastically in size both in height and width.
- **Trees** – A handful of large desert tree species exist that provide desirable shade for homes and gardens.
- **Shrubs** – Dozens of different types of shrubs thrive in desert landscapes, which are easy and low-maintenance to maintain. Shrubs can also provide excellent ground cover.
- **Alkaline soil** – Desert soils are alkaline by nature, and the plants that typically thrive in deserts have adapted to exist in soils with high pH's.
- **Irrigation and mulch** – Over time, most desert plants will not require irrigation. However, when newly planted, desert-adapted plants may need water delivered directly to the root zone. In addition, mulching should be practiced continually to reduce unnecessary water losses from evaporation, and assist with weed control.

Visit at www.GoletaWater.com/demonstrationgardens to download a Site Map and Plant List PDF for the Desert Garden area.

Follow us on social media:





Demonstration Gardens Site Signs



GOLETA WATER DISTRICT EDIBLE GARDEN

A WaterWise demonstration landscape

The Edible Garden features waterwise edible plants and trees, and a variety of innovative conservation techniques such as sustainable drainage and rain catchment systems, including a Hugelkultur (pronounced "hoogal-culture") bed. The low maintenance plants and trees featured in the Edible Garden are easy to grow and well-suited for the local climate. Rainwater from the roof is fed through gutters into the rain barrel tank and then used to

irrigate the garden. Rainwater is also channeled into a dry pond, known as an infiltration basin, on the other side of the garden. The garden features various mulching and water retention techniques as well as permeable surfaces to further prevent storm water runoff and minimize the need for potable water for irrigation.



Trees and Shrubs

- 1 Diospyros kaki 'Tuyu' Oriental Persimmon
- 2 Feijoa sellowiana Pineapple Guava
- 3 Ficus carica 'Black Jack' Edible Fig
- 4 Malus 'Anna' Apple
- 5 Persea Americana 'Green' Dwarf Haas Avocado
- 6 Prunus armeniaca Apricot
- 7 Prunus ? Plum
- 8 Psidium cattleianum Strawberry Guava
- 9 Punica granatum 'Wonderful' Pomegranate
- 10 Pyrus 'Loth Century' Pear
- 11 Pyrus 'Shinsei' Asian Pear

Shrubs, Groundcovers and Perennials

- | | |
|--|---|
| <ol style="list-style-type: none"> 1 Achillea millefolium Yarrow 2 Actinidia Self-Fruitful Kiwi 3 Aloe arborescens Tree Aloe 4 Aloe vera 5 Alysicia citrifolia Lemon Verbena 6 Artemisia douglasiana Mugwort 7 Artemisia pycnantha 'David's Choice' Coastal Sage-wort 8 Baccharis pilularis Coyote Brush 9 Baccharis pilularis 'Twin Peaks' Prostrate Coyote Brush 10 Ceanothus 'Centennial' Wild Lilac 11 Ceanothus 'Concha' Concha California Lilac | <ol style="list-style-type: none"> 12 Ceanothus griseus horizontalis 'Yankee Point' Ceanothus Yankee Point 13 Cymbopogon citratus Lemongrass 14 Cynara scolymus 'Green Globe' Artichoke 15 Eriogonum fasciculatum 'Wartime Lily' California Buckwheat 16 Eriogonum grande rubescens Red Flowered Buckwheat 17 Galvezia speciosa 'Boca Rosa' Island Snapdragon 18 Hemeocalis 'Stella d'Oro' Daylily 19 Juncus patens Rush 20 Launus nobilis Sweet Bay 21 Lavandula 'Goodwin Creek Grey' Lavender Goodwin Creek 22 Mimulus aurantiacus Sticky Monkeyflower 23 Opuntia 'Burbank Thornless' Fruiting Nopal 24 Origaniun vulgare ssp. hirtum Creek Oregano 25 Passiflora edulis Passionfruit Vine 26 Ribes aureum gracillimum Golden Currant 27 Ribes indecorum Red Flowered Currant 28 Ribes malvaecum Chaparral Currant 29 Ribes sanguineum var. glutinosum Red Flowering Currant 30 Rosa californica California Wild Rose 31 Salvia officinalis Garden Sage 32 Salvia officinalis purpurea Purple Garden Sage 33 Sambucus mexicana Blue Elderberry 34 Solidago californica California Goldenrod 35 Thyme 36 Groundcover Thyme 37 Tulbaghia violacea 'Silver Lace' Magwort 38 Vitus vinifera 'Sunshine Blue' Southern Highbush Blueberry 39 Vaccinium 'California Blue' European Grape 40 Zauschneria californica California Fuchsia 41 Escholia californica California Poppy 42 Fragaria vesca Alpine Strawberry 43 Origaniun vulgare Oregano 44 Thymus citrodorus Lemon Thyme |
|--|---|



goletawater.com

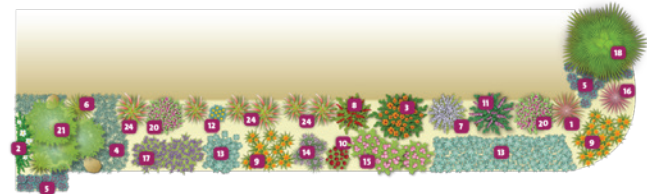


GOLETA WATER DISTRICT PERENNIAL BORDER

A WaterWise demonstration landscape

The Perennial Border plants thrive in full sun with minimal irrigation. They were selected as much for foliage contrast and form as for flower color – the foliage contrast will make the garden interesting even when it is not flowering. Complementary colors are used to create a highpoint. Perennial plants are plants that live for more than two years. In general, they grow and bloom over the

spring and summer, die back every autumn and winter, and then return in the spring from their rootstock. Planting a border of perennials is often used to frame a building or walkway, or serve as the focal point of a larger bed. They can be used to define path and bed boundaries, soften hard edges, and usually look best in front of a solid backdrop of vegetation, a vine-covered fence, or a wall.



- | | | |
|--|---|--|
| <ol style="list-style-type: none"> 1 Cordylia australis 'Sunrise' Grass Palm 2 Solanum jasminoides Potato Vine 3 Leonotis leonurus Lion's Tail 4 Dymondia margaratae Dymondia 5 Pelargonium sidoides Silverleaf geranium 6 Phormium Mountain Flax 7 Perovskia 'Blue Spire' Russian Sage | <ol style="list-style-type: none"> 8 Salvia confertiflora Sage 9 Hemerocallis (mixed variety) Daylily 10 Achillea millefolium 'Paprika' Paprika Yarrow 11 Salvia Chiapas Sage 12 Phlomis fruticosa Jerusalem sage 13 Stachys byzantina Lamb's Ears 14 Tulbaghia violacea 'Silver Lace' Variegated Society Garlic | <ol style="list-style-type: none"> 15 Penstemon 'Apple Blossom' Pink Beard Tongue 16 Cordylia banksii 'Electric Pink' Grass Palm 17 Lavandula French Lavender 18 Chamaerops humilis Mediterranean Fan Palm 19 Polygala myrtifolia Sweet Pea Shrub 20 Miscanthus sinensis |
|--|---|--|



goletawater.com

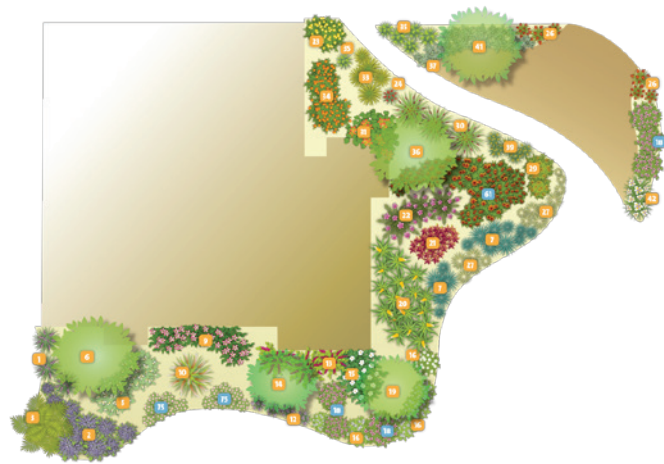


Demonstration Gardens Site Signs

GOLETA WATER DISTRICT EXOTIC GARDEN

A WaterWise demonstration landscape

The Exotic Garden introduces unusual water efficient plants that are less commonly seen in this region, with bright, bold colors. The bright colors of exotic plant species are a valuable asset when designing a yard with street-facing segments. Gardens that are more prominent from the curb when viewed by passing cars may use different design elements than a typical garden. The garden has also been designed to have year-round interest, and you may notice a shared pigment throughout the garden, as even the foliage has a yellow accent.

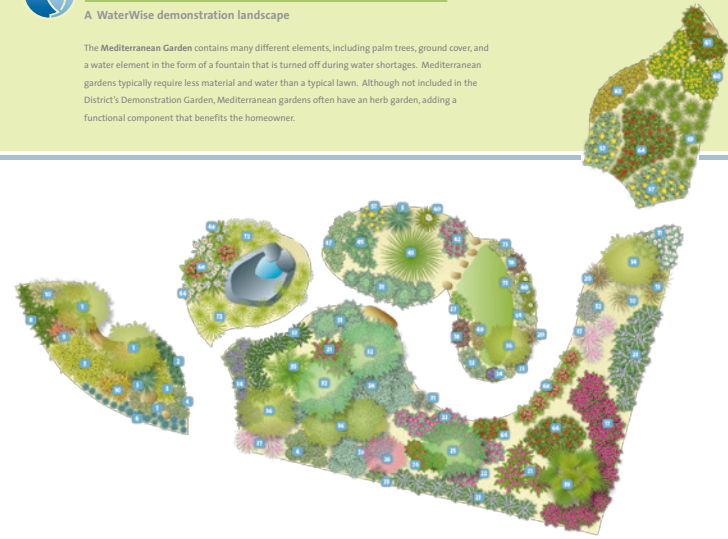


- | | | | |
|--|--|--|--|
| 1 Liriope gigantea
Giant Lily Turf | Society Garlic | Woolly Grevillea | 34 Lantana 'Radiation'
Lantana |
| 2 Nepeta faassenii
Catmint | 13 Salvia chiapensis
Chiapas Sage | 23 Lantana 'Spreading Sunshine'
Lantana | 35 Anigozanthos flavidus
Kangaroo Paw |
| 3 Phoenix roebelenii
Pygmy Date Palm | 14 Vitex angus-castus
Chaste Tree | 24 Anigozanthos 'Regal Claw'
Kangaroo Paw | 36 Tabebuia chrysotricha
Golden Trumpet Tree |
| 5 Correa 'Ivory Bells'
Australian Fuchsia | 15 Cistus hybridus
White Rockrose | 26 Kniphofia uvaria
Red Hot Poker, Torch Lily,
Poker Plant | 37 Artemisia 'Powis Castle'
Silver Wormwood |
| 6 Ceratonia siliqua (male)
Carob | 16 Coleonema album
White Breath of Heaven | 27 Stipa tenuissima
Texas Needle Grass | 39 Bulbine frutescens
Stalked Bulbine |
| 7 Helictotrichon sempervirens
Blue Oat Grass | 18 Gaura 'Siskiyou Pink'
Pink Gaura | 29 Euryops pectinatus 'Viridis'
Golden Daisy Shrub | 41 Quercus tomatella
Island Oak |
| 9 Rhapsiolepis 'Jack Evans'
India Hawthorn | 19 Arbutus 'Marina'
Strawberry Tree | 30 Chondropetalum tectorum
Cape Rush | 42 Dietes
Fortnight Lily |
| 10 Miscanthus transmorrisonsensis
Evergreen Eulalia | 20 Aloe striatula
Fence Aloe | 31 Bauhinia galpinii
Red Orchid Bush | 61 Leonotis leonurus
Lion's Tail |
| 12 Tulbaghia violacea | 21 Leucadendron 'Safari Sunset'
Safari Sunset | 33 Phormium 'Yellow Wave'
New Zealand Flax | 75 Erigeron karvinskianus
Santa Barbara Daisy |

GOLETA WATER DISTRICT MEDITERRANEAN GARDEN

A WaterWise demonstration landscape

The Mediterranean Garden contains many different elements, including palm trees, ground cover, and a water element in the form of a fountain that is turned off during water shortages. Mediterranean gardens typically require less material and water than a typical lawn. Although not included in the District's Demonstration Garden, Mediterranean gardens often have an herb garden, adding a functional component that benefits the homeowner.



- | | | | | |
|---|--|--|---|---|
| 1 Olea europaea
Olive | 13 Artemisia 'Powis Castle'
Silver Wormwood | 26 Cereus occidentalis
Western Redbud | 40 Yucca recurvifolia
Curveleaf Yucca | 61 Leonotis leonurus
Lion's Tail |
| 2 Senecio mandraliscae
Aklavia | 17 Miscanthus 'Morning Light'
Variegated Maiden Grass | 27 Sedum brevifolium
Shorleaf Stonecrop | 41 Arctostaphylos 'Magenta'
African Daisy | 62 Sedum rubrotinctum
Pork and Beans |
| 3 Helichrysum 'LimeLight'
LimeLight Everlasting | 14 Cassia leptophylla
Gold Medallion Tree | 28 Lavandula dentata 'Candicans'
French Lavender | 43 Xanthorrhoea quadrangulata
Grass Tree | 64 Callistemon 'Little John'
Dwarf Bottlebrush |
| 4 Scaevola 'Mauve Clusters'
Fairy Fan Flower | 17 Bougainvillea 'La Jolla'
La Jolla Bougainvillea | 31 Salvia leucophylla
'Pl. Sal Spreader'
Purple Sage | 45 Agave attenuata 'Nova'
Blue Fox Tail Agave | 66 Hemerocallis 'Chardonnay'
White Day Lily |
| 5 Xanthorrhoea quadrangulata
Grass Tree | 18 Gaura 'Siskiyou Pink'
Pink Gaura | 32 Eucalyptus citriodora
Lemon Scented Gum | 48 Agapanthus africanus 'Albus'
White Lily of the Nile | 68 Canna Erectus
Salmon Aquatic Canna |
| 6 Festuca flava
Blue Fescue | 20 Pennisetum 'Eaton Canyon'
Dwarf Fountain Grass | 33 Hebe 'Lake'
Blue Hebe | 49 Coleonema pulchrum
Pink Breath of Heaven | 69 Acorus gramineus 'Variegatus'
Sweet Flag |
| 7 Erigeron 'NW'
Beach Daisy | 21 Buddleia 'Pink D'
Butterfly Bush | 34 Nepeta faassenii
Catmint | 51 Westringia 'Wynabbie Gem'
Blue Coast Rosemary | 71 Tulbaghia violacea
Society Garlic |
| 8 Senecio mandraliscae
Dwarf Bamboo | 22 Cistus 'Sunset'
Magenta Rockrose | 35 Phoenix reclinata
Senegal Date Palm | 52 Coleonema album
White Breath of Heaven | 72 Cyperus papyrus
Papyrus |
| 9 Pennisetum setaceum
'Rubrum'
Red Fountain Grass | 23 Rosmarinus 'Tuscan Blue'
Tuscan Blue Rosemary | 36 Lagerstroemia 'Tuscarora'
Crape Myrtle | 57 Phlomis frutescens
'Grande Verde'
Jerusalem Sage | 73 Echinium
Pride of Madeira |
| 10 Miscanthus sinensis 'Gracillimus'
Maiden Grass | 24 Limonium perezii
Statice | 37 Muhlenbergia capillaris
Hairy Awn Muhly | 60 Tagetes lemmonii
Mexican Marigold | 74 Salvia greggii
Dark Dancer |
| 11 Ceratium tomentosum
Snow in Summer | 25 Pistacia chinensis
Chinese Pistache | 39 Brahea edulis
Guadalupe Palm | | 75 Erigeron karvinskianus
Santa Barbara Daisy |



Demonstration Gardens Site Signs

GOLETA WATER DISTRICT
TRADITIONAL GARDEN
 A WaterWise demonstration landscape

The **Traditional Garden** is styled toward use around older, or more traditional style homes. The plants selected for this area are similar to plants that have been commonly used in gardens for the last fifty years. In general, they are water thrifty and blend well with established gardens, making them especially appropriate for those interested in maintaining a traditional garden, but looking for a low water alternative. The lawn element, often over-used in traditional style gardens, has been replaced with water-saving alternatives, such as mulch and low water/native grasses.



<ol style="list-style-type: none"> 1 Quercus tomentella Island Oak 2 Cotoneaster buxifolia Boxwood Cotoneaster 3 Asparagus densiflorus 'Myers' Asparagus fern 4 Lantana sellowiana 'Alba' White Trailing Lantana 5 Abelia 'Edward Goucher' Pink Abelia 	<ol style="list-style-type: none"> 7 Convolvulus sabatius Ground Morning Glory 8 Cistus skanbergii Rockrose 9 Cercis 'Forest Pansy' Red Leaf Redbud 10 Correa 'Ivory Bell' Australian Fuchsia 11 Howea fosteriana Kentia Palm 	<ol style="list-style-type: none"> 12 Rhapis excelsa Lady Palm 13 Phoenix roebelenii Pygmy Date Palm 14 Nandina domestica Compacta Heavenly Bamboo 15 Agapanthus africanus Lily of the Nile 16 Berberis thunbergii 'Nana' Dwarf Japanese Barberry 	<ol style="list-style-type: none"> 17 Pittosporum tobira 'Variegata' Variegated Tobira 19 Juniperus conferta Shore Juniper 21 Liriope gigantea Giant Turf Lily 23 Lantana 'Spreading Sunshine' Lantana 24 Arctostaphylos 'Dr Hurd' Manzanita 26 Hemerocallis 'Orange' Orange Daylily 	<ol style="list-style-type: none"> 27 Cotoneaster lacteus Red Clusterberry 28 Rhamnolepis umbellata 'Minor' Dwarf Yeddo Hawthorn 31 Chondropetalum tectorum Cape Rush 34 Tritanopsis laurina Water Gum 35 Diets 'Orange Drop' Dwarf Fortnight Lily
---	--	--	--	---

goletawater.com

GOLETA WATER DISTRICT
CALIFORNIA NATIVE GARDEN
 A WaterWise demonstration landscape

The California Native Garden demonstrates plants that are native to our region. Native plants provide habitat for local and migratory birds and act as hosts for beneficial insects that can reduce dependence on chemical pest controls. Although gardens are often planted with all native plants, many of these plants can be used with any style of landscape. They are also the best adapted plants for our local soils, and often need little to no fertilizer or water to look their best.



<ol style="list-style-type: none"> 1 Euchschozia californica California Poppy 4 Salvia 'California Spreader' Spreading Sage 6 Leymus (Elymus) 'Canyon Prince' Blue Giant Wild Eye 9 Mimulus (Diplazis) hybridus Yellow Monkeyflower 8 Epilobium canum California Fuchsia 	<ol style="list-style-type: none"> 9 Achillea millefolium Gamboge Yarrow 11 Lysimachium asplenifolium Catalina Ironweed 12 Galvesta speciosa Island Snapdragon 14 Podocarpus macrophyllus New Pine 17 Ribes viburnifolium Evergreen Currant 	<ol style="list-style-type: none"> 18 Cercis occidentalis Western Redbud 19 Ribes speciosa Fuchsia-flowering Gooseberry 20 Carpentaria californica Bush Anemone 21 Pentstemon glaucomide Garden Penstemon 22 Aesculus californica California Buckeye 	<ol style="list-style-type: none"> 24 Ceanothus 'Snow Ball' Montezuma Ceanothus 25 Ceanothus 'Trosty Blue' Wild Lilac 26 Verbena peruviana Rose Verbena 27 Quercus agrifolia Coast live oak 28 Juncea patens Eli Blue 	<ol style="list-style-type: none"> 29 Salvia spathacea Hummingbird Sage 31 Hardenbergia violacea Purple Lilac Vine 33 Myrsine africana African Boxwood
---	--	---	--	---

goletawater.com



Demonstration Gardens Site Signs



GOLETA WATER DISTRICT

DESERT GARDEN

A WaterWise demonstration landscape

The Desert Garden is predominated by plants that are most commonly used in arid or southwestern-style gardens. The garden features cacti and succulents, cutting water consumption dramatically as succulents alone use as much as 80% less water than non-native species.

Plants that have adapted to desert landscapes employ a number of water-saving adaptations to stave off water loss in areas with low precipitation rates and harsh desert sun exposure. They should require no supplemental irrigation within two to three years of planting.



1 *Aloe x spinosissima*
Dwarf Tree Aloe

2 *Eschscholzia californica*
California Poppy

5 *Portulacaria afra*
Elephant Salad

6 *Dracaena draco*
Dragon Tree

7 *Yucca whipplei*
Our Lord's Candle

8 *Euphorbia millii*
Crown of Thorns

9 *Echeveria agavoides*
Agave-leaved Echeveria

10 *Macfadyenia unguis-cati*
Cat's Claw Vine

11 *Dasyliion wheeleri*
Blue Yucca

12 *Sedum brevifolium*
Shortleaf Stonecrop

13 *Echeveria 'imbricata'*
Hen and Chickens

15 *Dasyliion longissimum*
Mexican Tree Grass

16 *Parkinsonia aculeata*
Pala Verde Tree


17 *Senecio mandraliscae*
Kleinia

20 *Brahea edulis*
Guadalupe Palm


goletawater.com



Demonstration Gardens Subpage Example



Goleta Water District | California... x +

www.goletawater.com/california-native-garden/

Goleta Water District

August 28, 2015

Conservation Customer Service Rates, Bills & Budget Agendas & Minutes Newsletters & Press About the District Home

Access Online Account New Water Services Backflow / Cross Connection Videos Documents Water Supply Water Quality

Home / California Native Garden

California Native Garden

GOLETA WATER DISTRICT
CALIFORNIA NATIVE GARDEN
A WaterWise demonstration landscape



The **California Native Garden** demonstrates plants that are native to our region. Many gardeners prefer to use native plants because they blend well with the natural landscape, provide habitat for local wildlife, and their water needs are compatible with the arid nature of our climate.

Located between the Desert Garden and Traditional Garden areas, the Native Garden borders Hollister Avenue. The plants used in this section of the Demonstration Garden will work well for those who live in more rustic areas with existing native vegetation. Native plants provide habitat for local and migratory birds and act as hosts for beneficial insects that can reduce dependence on chemical pest controls. Although gardens are often planted with all native plants, many of these plants can be used with any style of landscape. They are also the best-adapted plants for our local soils, and often need little to no fertilizer or water to look their best.

Why garden with native plants?

- **Use less water** – Plants native to our arid climate have adapted to use less water than many of their non-native counterparts.
- **Lower maintenance** – Native plants will require less water, fertilizer, pruning, pesticides, and general maintenance than many common, non-native garden plants.
- **Less need for pesticides** – Natives have developed their own natural defense against many of the pests and diseases commonplace in their region. This means less garden toxins will make it into our creeks and watersheds.
- **Attract more wildlife** – Research shows that native wildlife prefers native plants.
- **Ecological benefits** – Using native plant species can help create bridges between native areas that have been isolated from other natives by disturbance of the natural landscape.

Click [here](#) to download a Site Map and Plant List PDF for the California Native Garden area.

© 2015 Goleta Water District All Rights Reserved.



Attachment I1

Demonstration Gardens Outreach Plan Materials



Welcome to the Goleta Water District Demonstration Gardens

Outdoor water use makes up a large percentage of water consumption by District customers. In fact, upwards of 50% of water use in the typical District home is used for keeping thirsty gardens and lawns quenched. Rethinking what and how we plant is a great way to reduce water usage. To help customers create beautiful gardens that conserve water, please visit our Demonstration Garden on the grounds of the Goleta Water District Office, located at 4699 Hollister Avenue, Goleta (across from San Marcos High School).

Plants within the demonstration grounds have been grouped according to water use in a series of “rooms”, including: Perennial Border, Mediterranean Garden, Exotic Garden, Traditional Garden, Southern California Native Garden, Desert Garden, and the new Edible Landscape Garden. The gardens feature waterwise plants and efficient irrigation techniques such as mulching, drip irrigation systems, and low-profile sprinklers, with sustainable drainage and rain catchment systems such as a rain barrel and Hugelkultur, which utilizes a hill mound that acts like a sponge to store and release rainwater.

Information about the Demonstration Gardens is available at the front desk of the Goleta Water District Office during regular business hours. In addition, the following pages feature in-depth discussions each of the seven garden types, and a detailed pamphlet for download and printing can be found at www.GoletaWater.com/demonstrationgardens.

For additional resources on water conservation, including educational videos, information on water efficient irrigation, and a landscape watering calculator, visit www.WaterWiseSB.org.

Garden Planning Tips

- Think about your irrigation system as part of your planning. Efficient drip systems are more easily installed as your plant.
- Consider a Laundry-to-Landscape graywater system. Certain plants do better with graywater and designing the appropriate mix for your site will lead to a more successful garden.

Follow us on social media:



Designing a Waterwise Garden

Having a waterwise garden does not mean you have to replace all of your existing plants with cacti and succulents. When you combine water efficient plant species with strategic gardening techniques, such as grouping plant types according to soil, water, and sunlight needs, you can still have beautiful and lush gardens that get by on rainfall alone.



When designing a water efficient landscape, remember to:

- Focus on one section at a time, rather than adding individual plants haphazardly.
- Layout a simple garden plan. If using drip irrigation, this is easiest to add after plants are in the ground. Otherwise make sure you consider where irrigation equipment needs to be placed.
- Group plants according to their water needs.
- Clear and remove any debris, weeds and trash from the site, and determine which plants, if any, will remain.
- Plant in the fall and winter during the cooler, wetter season (October through March).
- Plants will grow so remember to space them according to the recommendations provided by the nursery.
- Mulch! It's the secret to keeping plants healthy and hydrated. Mulch is available for free from Santa Barbara County at 4430 Calle Real Santa Barbara, CA. Reapply every 3-6 months as mulch breaks down.
- Once you have installed your garden make sure to pull out the plants you don't want in your garden – every drop of water your weeds use is a drop of water that is no longer available for the plants you do want to stick around.

Want to maximize your conservation?

- Not all areas need to be heavily planted. Consider mulching over lawns, or reducing their size, and then focus on planting along the edges.
- Grade your yard before you plant to capture rainfall, or add infiltration basins, bioswales, and rain barrels to reuse rainwater.
- Install a Laundry-to-Landscape graywater system to reuse water for sustainable landscape irrigation.

We can help!

The District has rebates available for waterwise plants, efficient irrigation equipment, Laundry to Landscape components and more under the Smart Landscape Rebate Program. Click [here](#) or call (805) 964-6761 ext. 642- to learn more.

REMEMBER: Always call 811 before your dig to make sure you don't disturb any utility lines.



GOLETA WATER DISTRICT

EDIBLE GARDEN

A WaterWise demonstration landscape



The **Edible Garden** area is the newest addition to the District Demonstration Gardens. It features water-wise edible plants and trees, and a variety of innovative conservation techniques such as sustainable drainage and rain catchment systems, including a Hugelkultur (pronounced “hoogal-culture”) bed. The goal of the garden is to model water-efficient edible landscaping ideas that can be implemented by customers at home.

The low maintenance plants and trees featured in the Edible Garden are easy to grow and well-suited for the local climate. Rainwater from the roof is fed through gutters into the rain barrel tank and then used to irrigate the garden. Rainwater from the roof is also channeled into a dry pond, known as an infiltration basin, on the other side of the garden. The garden also features various mulching and water retention techniques as well as permeable surfaces to further prevent storm water runoff and minimize the need for potable water for irrigation.

There are many benefits to planting a sustainable and water-wise edible garden at your home, including:

- Improving water conservation and reducing your water bills.
- Reducing food bills while enjoying eating and sharing the food that you grow.
- Enhancing health with local, high quality food options.
- Reducing the carbon emissions that are associated with the transportation of food to your local store.

Visit at www.GoletaWater.com/demonstrationgardens to download an Edible Garden information PDF that includes an FAQ, Site Map, and Plant List and Features

Follow us on social media:





GOLETA WATER DISTRICT

PERENNIAL BORDER

A WaterWise demonstration landscape



The **Perennial Border** area plants thrive in full sun with minimal irrigation. They were selected as much for foliage contrast and form as for flower color – the foliage contrast will make the garden interesting even when it is not flowering. You can also use complementary colors to create a highpoint. A perennial plant is a plant that lives for more than two years. In general, they grow and bloom over the spring and summer, die back every autumn and winter, and then return in the spring from their rootstock. Planting a border of perennials is often used to frame a building or walkway, or serve as the focal point of a larger bed. They can be used to define path and bed boundaries, soften hard edges, and usually look best in front of a solid backdrop of vegetation, a vine-covered fence, or a wall.

In general, perennial edgers are chosen because they flower for a long time and suffer minimal disease and pest problems. Another important factor is choosing the right plants for the right spaces. To keep plants looking their best and to promote new growth, blooms should be removed regularly. The Perennial Border plants fall into the average low water-using category of the garden.

In summary, perennial borders can be used to:

- Frame a building or walkway, soften hard edges and accentuate bed lines.
- Add texture and color to your garden.

And are often chosen because they:

- Do not have to be re-planted each year.
- Require minimal maintenance.
- Use less water depending on the species planted.

Visit at www.GoletaWater.com/demonstrationgardens to download a Site Map and Plant List PDF for the Perennial Border area.

Follow us on social media:





GOLETA WATER DISTRICT

MEDITERRANEAN GARDEN

A WaterWise demonstration landscape



The **Mediterranean Garden** area borders the parking lot of the Goleta Water District's offices and contains many different elements, including palm trees, ground cover, and a water feature in the form of a fountain that is turned off during water shortages. Loved for their casual elegance, Mediterranean gardens are inspired by the coastal areas of Italy, Spain, and France. Plants with silver and gray foliage compliment the cool and peaceful feel of the created environment, which are a mix of long-living evergreen shrubs and less permanent perennials and ground covers.

Often, Mediterranean gardens are chosen because they fit the architectural design of the home. However, this landscape design can also be used with homes of relatively neutral design, such as the ranch style homes that are commonly found in the Goleta Valley and the greater Santa Barbara County region.

Mediterranean gardens typically require less material and water than a typical lawn. Although not included in the District's Demonstration Garden, Mediterranean gardens often include a culinary herb garden, adding a functional edible component that benefits the resident.

Visit at www.GoletaWater.com/demonstrationgardens to download a Site Map and Plant List PDF for the Mediterranean Garden area.

Follow us on social media:





GOLETA WATER DISTRICT

EXOTIC GARDEN

A WaterWise demonstration landscape



The **Exotic Garden** area is located at the corner of Hollister Avenue and Puente Drive. This garden introduces unusual water efficient plants that are less commonly seen in this region, with bright, bold colors. Orange, red, and yellow flowers and matching foliage can add depth and contrast to your waterwise landscape. Many of the species can be purchased at professional, full-service nurseries, or specially ordered if not found locally.

The bright colors of exotic plant species are a valuable asset when designing a yard with street-facing segments. Gardens that are more prominent from the curb when viewed by passing cars may use different design elements than a typical garden that is meant to be appealing to persons strolling through its grounds. Our Exotic Garden lies on the intersection of a busy street, making the broad themes and bright colors of our exotic plant species a good selection for a garden that will be viewed from a distance. The garden has also been designed to have year-round interest, and you may notice a shared pigment throughout the garden, as even the foliage has a yellow accent.

The plants in the Exotic Garden are not only low water-using, but extremely easy to maintain. Once established, upkeep is limited to cutting the plants back once a year.

Water efficient exotic plants are:

- Easily seen from further away, making them good candidates for gardens along street curbs.
- Low maintenance species, requiring minimal annual pruning.
- Add color depth to your garden.

Visit at www.GoletaWater.com/demonstrationgardens to download a Site Map and Plant List PDF for the Exotic Garden area.

Follow us on social media:





GOLETA WATER DISTRICT

TRADITIONAL GARDEN

A WaterWise demonstration landscape



The **Traditional Garden** area is located on the corner of Hollister Avenue and Puente Drive. The garden is styled toward use around older, or more traditional style homes. The plants selected for this area are similar to plants that have been commonly used in gardens for the last fifty years. In general, they are water thrifty and blend well with established gardens, making them especially appropriate for those interested in maintaining a “traditional garden,” but looking for a low water alternative. By using species showcased in this portion of the Demonstration Gardens, you will be able to replace high water-using plants with more water efficient species. As always, be sure to group plants with similar water needs together, so as not to over-water the new planting.

Of particular importance, our Traditional Garden may help guide your decision on what to do with your pre-existing lawn, a common fixture in yards within our water district. The lawn element, often over-used in traditional gardens styles, has been replaced in our Demonstration Garden with water-saving alternatives, such as mulch.

Other alternatives for maintaining open spaces that use less water include native grasses, permeable hardscape materials, astroturf, or sand. These are good examples of what to do with the part of your yard that has been designed for play or entertainment.

A waterwise landscaper can have a traditional garden that is water efficient. Make sure you pick traditional garden plants that are:

- Low water users.
- Not susceptible to regional pests and disease, which would require an increased usage of pesticides.
- Water-friendly alternatives to traditional grass lawns.

Visit at www.GoletaWater.com/demonstrationgardens to download a Site Map and Plant List PDF for the Traditional Garden area.

Follow us on social media:





GOLETA WATER DISTRICT

CALIFORNIA NATIVE GARDEN

A WaterWise demonstration landscape



The **California Native Garden** area demonstrates plants that are native to our region. Many gardeners prefer to use native plants because they blend well with the natural landscape, provide habitat for local wildlife, and their water needs are compatible with the arid nature of our climate.

Located between the Desert Garden and Traditional Garden areas, the Native Garden borders Hollister Avenue. The plants used in this section of the Demonstration Garden will work well for those who live in more rustic areas with existing native vegetation. Native plants provide habitat for local and migratory birds and act as hosts for beneficial insects that can reduce your dependence on chemical pest controls. Although many people prefer an all-native plant garden, many of these plants can be used with any style of landscape. They are also the best-adapted plants for our local soils, and often need little to no fertilizer or water to look their best.

Why garden with native plants?

- **Use less water** – Plants native to our arid climate have adapted to use less water than many of their non-native counterparts.
- **Lower maintenance** – Native plants will require less water, fertilizer, pruning, pesticides, and general maintenance than many common, non-native garden plants.
- **Less need for pesticides** – Natives have developed their own natural defense against many of the pests and diseases commonplace in their region. This means less garden toxins will make it into our creeks and watersheds.
- **Attract more wildlife** – Research shows that native wildlife prefers native plants.
- **Ecological benefits** – Using native plant species can help create bridges between native areas that have been isolated from other natives by disturbance of the natural landscape.

Visit at www.GoletaWater.com/demonstrationgardens to download a Site Map and Plant List PDF for the California Native Garden area.

Follow us on social media:





GOLETA WATER DISTRICT

DESERT GARDEN

A WaterWise demonstration landscape



The **Desert Garden** area is located adjacent to the District headquarters building on Hollister Avenue side. The garden is predominated by plants that are most commonly used in arid or southwestern-style gardens. The garden features cacti and succulents, cutting water consumption dramatically as succulents alone use as much as 80% less water than non-native species.

Plants that have adapted to desert landscapes employ a number of water-saving adaptations to stave off water loss in areas with low precipitation rates and harsh desert sun exposure. Succulents, for example, have extensive root systems to collect water that they store in their leaves and stems. Consider using them in larger groupings of one variety for their strong sculptural forms and unusual textures. They should require no supplemental irrigation within two to three years of planting.

Desert gardens typically include:

- **Succulents** – Succulents are great for both indoor and outdoor planting, and come in a wide variety of shapes and sizes.
- **Cacti** – Cacti and agaves can add intriguing sculptural elements to your yard, and range drastically in size both in height and width.
- **Trees** – A handful of large desert tree species exist that provide desirable shade for homes and gardens.
- **Shrubs** – Dozens of different types of shrubs thrive in desert landscapes, which are easy and low-maintenance to maintain. Shrubs can also provide excellent ground cover.
- **Alkaline soil** – Desert soils are alkaline by nature, and the plants that typically thrive in deserts have adapted to exist in soils with high pH's.
- **Irrigation and mulch** – Over time, most desert plants will not require irrigation. However, when newly planted, desert-adapted plants may need water delivered directly to the root zone. In addition, mulching should be practiced continually to reduce unnecessary water losses from evaporation, and assist with weed control.

Visit at www.GoletaWater.com/demonstrationgardens to download a Site Map and Plant List PDF for the Desert Garden area.

Follow us on social media:



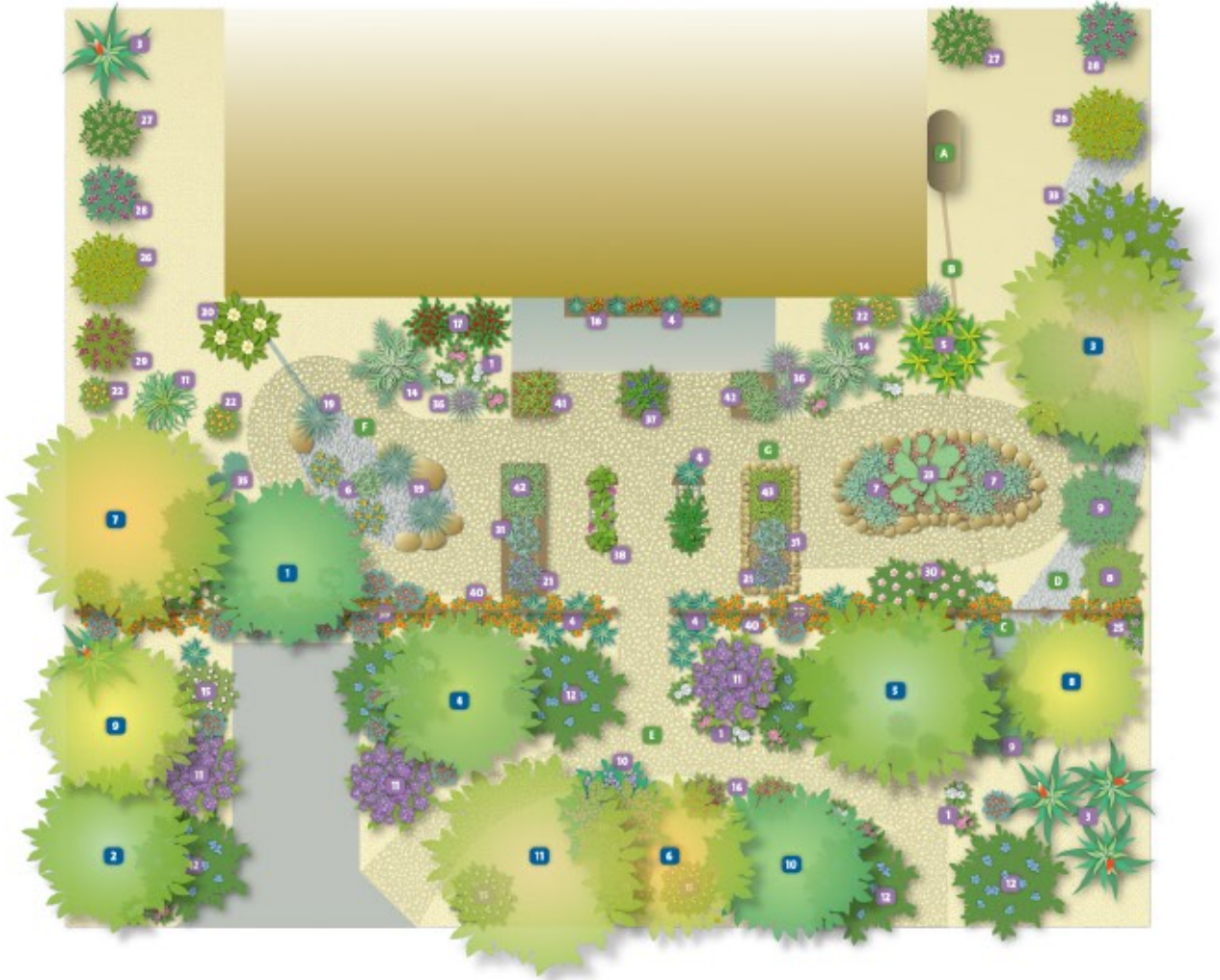


GOLETA WATER DISTRICT EDIBLE GARDEN

A WaterWise demonstration landscape

The Edible Garden features waterwise edible plants and trees, and a variety of innovative conservation techniques such as sustainable drainage and rain catchment systems, including a Hugelkultur (pronounced "hoogal-culture") bed. The low maintenance plants and trees featured in the Edible Garden are easy to grow and well-suited for the local climate. Rainwater from the roof is fed through gutters into the rain barrel tank and then used to

irrigate the garden. Rainwater is also channeled into a dry pond, known as an infiltration basin, on the other side of the garden. The garden features various mulching and water retention techniques as well as permeable surfaces to further prevent storm water runoff and minimize the need for potable water for irrigation.



Trees and Shrubs

- 1 *Diospyros kaki* 'Fuyu'
Oriental Persimmon
- 2 *Feijoa sellowiana*
Pineapple Guava
- 3 *Ficus carica* 'BlackJack'
Edible Fig
- 4 *Malus 'Anna'*
Apple
- 5 *Persea Americana* 'Gwen'
Dwarf Haas Avocado
- 6 *Prunus armeniaca*
Apricot
- 7 *Prunus* ?
Plum
- 8 *Psidium cattleianum*
Strawberry Guava
- 9 *Punica granatum* 'Wonderful'
Pomegranate
- 10 *Pyrus* '20th Century'
Pear
- 11 *Pyrus* 'Shinseiki'
Asian Pear

Shrubs, Groundcovers and Perennials

- | | | | |
|---|---|--|---|
| <ol style="list-style-type: none"> 1 <i>Achillea millefolium</i>
<i>Yarrow</i> 2 <i>Actinidia</i>
<i>Self-fruitful Kiwi</i> 3 <i>Aloe arborescens</i>
<i>Tree Aloe</i> 4 <i>Aloe vera</i>
<i>Medicinal Aloe</i> 5 <i>Aloysia citrodora</i>
<i>Lemon Verbena</i> 6 <i>Artemisia douglasiana</i>
<i>Mugwort</i> 7 <i>Artemisia pycnocephala</i>
<i>'David's Choice' Coastal Sagewort</i> 8 <i>Baccharis pilularis</i>
<i>Coyote Brush</i> 9 <i>Baccharis pilularis</i> 'Twin Peaks'
<i>Prostrate Coyote Brush</i> 10 <i>Ceanothus</i> 'Centennial'
<i>Wild Lilac</i> 11 <i>Ceanothus</i> 'Concha'
<i>Concha California Lilac</i> | <ol style="list-style-type: none"> 12 <i>Ceanothus griseus horizontalis</i>
<i>'Yankee Point' Ceanothus Yankee Point</i> 13 <i>Cymbopogon citratus</i>
<i>Lemongrass</i> 14 <i>Cynara scolymus</i> 'Green Globe'
<i>Artichoke</i> 15 <i>Eriogonum fasciculatum</i>
<i>'Warriner Lytle' California Buckwheat</i> 16 <i>Eriogonum grande rubescens</i>
<i>Red Flowered Buckwheat</i> 17 <i>Galvezia speciosa</i> 'Boca Rosa'
<i>Island Snapdragon</i> 18 <i>Hemerocallis</i> 'Stella d'Oro'
<i>Daylily</i> 19 <i>Juncus patens</i>
<i>Rush</i> 20 <i>Laurus nobilis</i>
<i>Sweet Bay</i> 21 <i>Lavandula</i> 'Goodwin Creek Grey'
<i>Lavender Goodwin Creek</i> | <ol style="list-style-type: none"> 22 <i>Mimulus aurantiacus</i>
<i>Sticky Monkeyflower</i> 23 <i>Opuntia</i> 'Burbank Thornless'
<i>Fruiting Nopal</i> 24 <i>Origanum vulgare</i> ssp. <i>hirtum</i>
<i>Greek Oregano</i> 25 <i>Passiflora edulis</i>
<i>Passionfruit Vine</i> 26 <i>Ribes aureum gracillimum</i>
<i>Golden Currant</i> 27 <i>Ribes indecorum</i>
<i>White Flowering Currant</i> 28 <i>Ribes malvaceum</i>
<i>Chaparral Currant</i> 29 <i>Ribes sanguineum</i> var. <i>glutinosum</i>
<i>Red Flowering Currant</i> 30 <i>Rosa californica</i>
<i>California Wild Rose</i> 31 <i>Salvia officinalis</i>
<i>Garden Sage</i> 32 <i>Salvia officinalis</i> <i>purpurea</i>
<i>Purple Garden Sage</i> | <ol style="list-style-type: none"> 33 <i>Sambucus mexicana</i>
<i>Blue Elderberry</i> 34 <i>Solidago californica</i>
<i>California Goldenrod</i> 35 <i>Thyme</i>
<i>Groundcover Thyme</i> 36 <i>Tulbaghia violacea</i> 'Silver Lace'
<i>Mugwort</i> 37 <i>Vaccinium</i> 'Sunshine Blue'
<i>Southern Highbush Blueberry</i> 38 <i>Vitis vinifera</i>
<i>European Grape</i> 39 <i>Zauschneria californica</i>
<i>California Fuchsia</i> 40 <i>Escholzia californica</i>
<i>California Poppy</i> 41 <i>Fragaria vesca</i>
<i>Alpine Strawberry</i> 42 <i>Origanum vulgare</i>
<i>Oregano</i> 43 <i>Thymus citrodorus</i>
<i>Lemon Thyme</i> |
|---|---|--|---|



goletawater.com





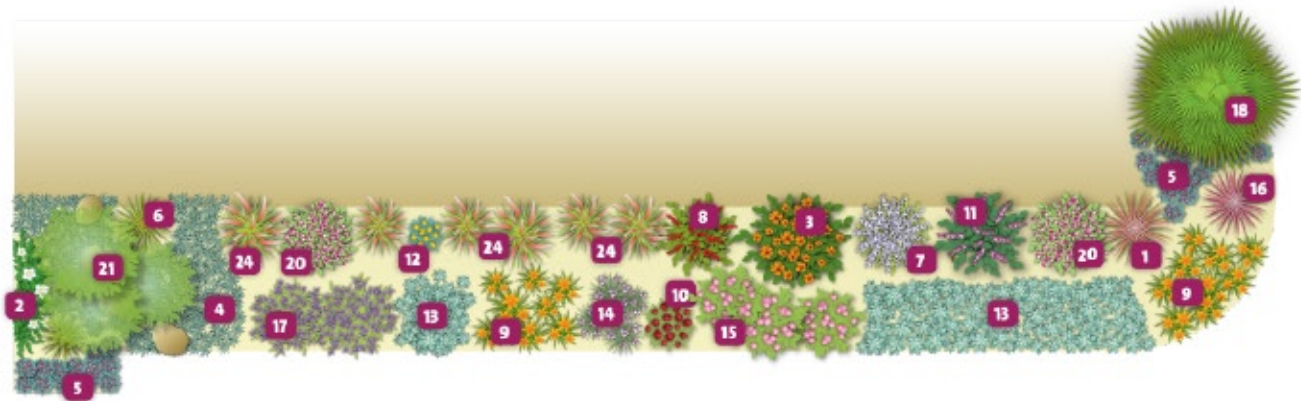
GOLETA WATER DISTRICT

PERENNIAL BORDER

A WaterWise demonstration landscape

The **Perennial Border** plants thrive in full sun with minimal irrigation. They were selected as much for foliage contrast and form as for flower color – the foliage contrast will make the garden interesting even when it is not flowering. Complementary colors are used to create a highpoint. Perennial plants are plants that live for more than two years. In general, they grow and bloom over the

spring and summer, die back every autumn and winter, and then return in the spring from their rootstock. Planting a border of perennials is often used to frame a building or walkway, or serve as the focal point of a larger bed. They can be used to define path and bed boundaries, soften hard edges, and usually look best in front of a solid backdrop of vegetation, a vine-covered fence, or a wall.



- | | | |
|--|--|---|
| 1 Cordyline australis 'Sunrise'
<i>Grass Palm</i> | 8 Salvia confertiflora
<i>Sage</i> | 15 Penstemon 'Apple Blossom'
<i>Pink Beard Tongue</i> |
| 2 Solanum jasminoides
<i>Potato Vine</i> | 9 Hemerocallis (mixed variety)
<i>Daylily</i> | 16 Cordyline banksii 'Electric Pink'
<i>Grass Palm</i> |
| 3 Leonotis leonurus
<i>Lion's Tail</i> | 10 Achillea millefolium 'Paprika'
<i>Paprika Yarrow</i> | 17 Lavandula
<i>French Lavender</i> |
| 4 Dymondia margaratae
<i>Dymondia</i> | 11 Salvia
<i>Chiapas Sage</i> | 18 Chamaerops humilis
<i>Mediterranean Fan Palm</i> |
| 5 Pelargonium sidoides
<i>Silverleaf geranium</i> | 12 Phlomis fruticosa
<i>Jerusalem sage</i> | 20 Polygala myrtifolia
<i>Sweet Pea Shrub</i> |
| 6 Phormium
<i>Mountain Flax</i> | 13 Stachys byzantina
<i>Lamb's Ears</i> | 24 Miscanthus sinensis |
| 7 Perovskia 'Blue Spire'
<i>Russian Sage</i> | 14 Tulbaghia violacea 'Silver Lace'
<i>Variiegated Society Garlic</i> | |



goletawater.com

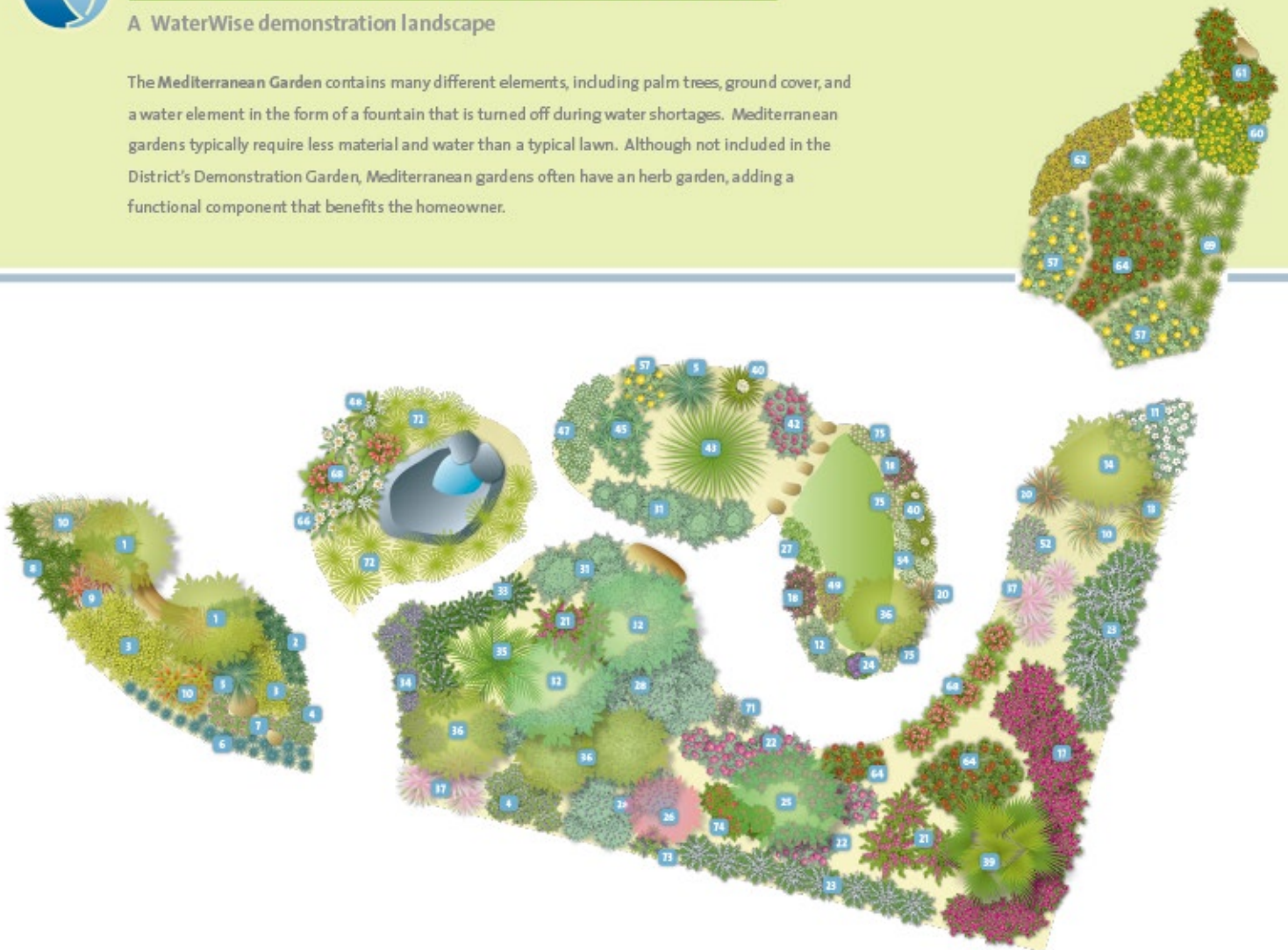




MEDITERRANEAN GARDEN

A WaterWise demonstration landscape

The Mediterranean Garden contains many different elements, including palm trees, ground cover, and a water element in the form of a fountain that is turned off during water shortages. Mediterranean gardens typically require less material and water than a typical lawn. Although not included in the District's Demonstration Garden, Mediterranean gardens often have an herb garden, adding a functional component that benefits the homeowner.



- 1 *Olea europaea*
Olive
- 2 *Senecio mandraliscae*
Kleinia
- 3 *Helichrysum 'Limelight'*
Limelight Everlasting
- 4 *Scaevola 'Mauve Clusters'*
Fairy Fan Flower
- 5 *Xanthorrhoea quadrangulata*
Grass Tree
- 6 *Festuca flava*
Blue Fescue
- 7 *Erigeron 'WR'*
Beach Daisy
- 8 *Senecio mandraliscae*
Dwarf Bamboo
- 9 *Pennisetum setaceum*
'Rubrum'
Red Fountain Grass
- 10 *Miscanthus sinensis 'Gracillimus'*
Maiden Grass
- 11 *Cerastium tomentosum*
Snow in Summer

- 12 *Artemisia 'Powis Castle'*
Silver Wormwood
- 13 *Miscanthus 'Morning Light'*
Variegated Maiden Grass
- 14 *Cassia leptophylla*
Gold Medallion Tree
- 17 *Bougainvillea 'La Jolla'*
La Jolla Bougainvillea
- 18 *Gaura 'Siskiyou Pink'*
Pink Gaura
- 20 *Pennisetum 'Eaton Canyon'*
Dwarf Fountain Grass
- 21 *Buddleia 'PinkD'*
Butterfly Bush
- 22 *Cistus 'Sunset'*
Magenta Rockrose
- 23 *Rosmarinus 'Tuscan Blue'*
Tuscan Blue Rosemary
- 24 *Limonium perezii*
Statice
- 25 *Pistacia chinensis*
Chinese Pistache

- 26 *Cercis occidentalis*
Western Redbud
- 27 *Sedum brevifolium*
Shortleaf Stonecrop
- 28 *Lavandula dentata 'Candilans'*
French Lavender
- 31 *Salvia leucophylla*
'Pt. Sal Spreader'
Purple Sage
- 32 *Eucalyptus citriodora*
Lemon Scented Gum
- 33 *Hebe 'Lake'*
Blue Hebe
- 34 *Nepeta faassenii*
Catmint
- 35 *Phoenix reclinata*
Senegal Date Palm
- 36 *Lagerstroemia 'Tuscarora'*
Crape Myrtle
- 37 *Muhlenbergia capillaris*
Hairy Awn Muhly
- 39 *Brahea edulis*
Guadalupe Palm

- 40 *Yucca recurvifolia*
Curveleaf Yucca
- 42 *Arctotis acaulis 'Magenta'*
African Daisy
- 43 *Xanthorrhoea quadrangulata*
Grass Tree
- 45 *Agave attenuata 'Nova'*
Blue Fox Tail Agave
- 47 *Laurentia (Isotoma) fluviatilis*
Blue Star Creeper
- 48 *Agapanthus africanus 'Albus'*
White Lily of the Nile
- 49 *Coleonema pulchrum*
Pink Breath of Heaven
- 52 *Westringia 'Wynabbie Gem'*
Blue Coast Rosemary
- 54 *Coleonema album*
White Breath of Heaven
- 57 *Phlomis fruticosa*
'Grande Verde'
Jerusalem Sage
- 60 *Tagetes lemmonii*
Mexican Marigold

- 61 *Leonotis leonurus*
Lion's Tail
- 62 *Sedum rubrotinctum*
Pork and Beans
- 64 *Callistemon 'Little John'*
Dwarf Bottlebrush
- 66 *Hemerocallis 'Chardonnay'*
White Day Lily
- 68 *Canna erebus*
Salmon Aquatic Canna
- 69 *Acorus gramineus 'Variegatus'*
Sweet Flag
- 71 *Tulbaghia violacea*
Society Garlic
- 72 *Cyperus papyrus*
Papyrus
- 73 *Echium*
Pride of Madeira
- 74 *Salvia gregii*
Dark Dancer
- 75 *Erigeron karvinskianus*
Santa Barbara Daisy

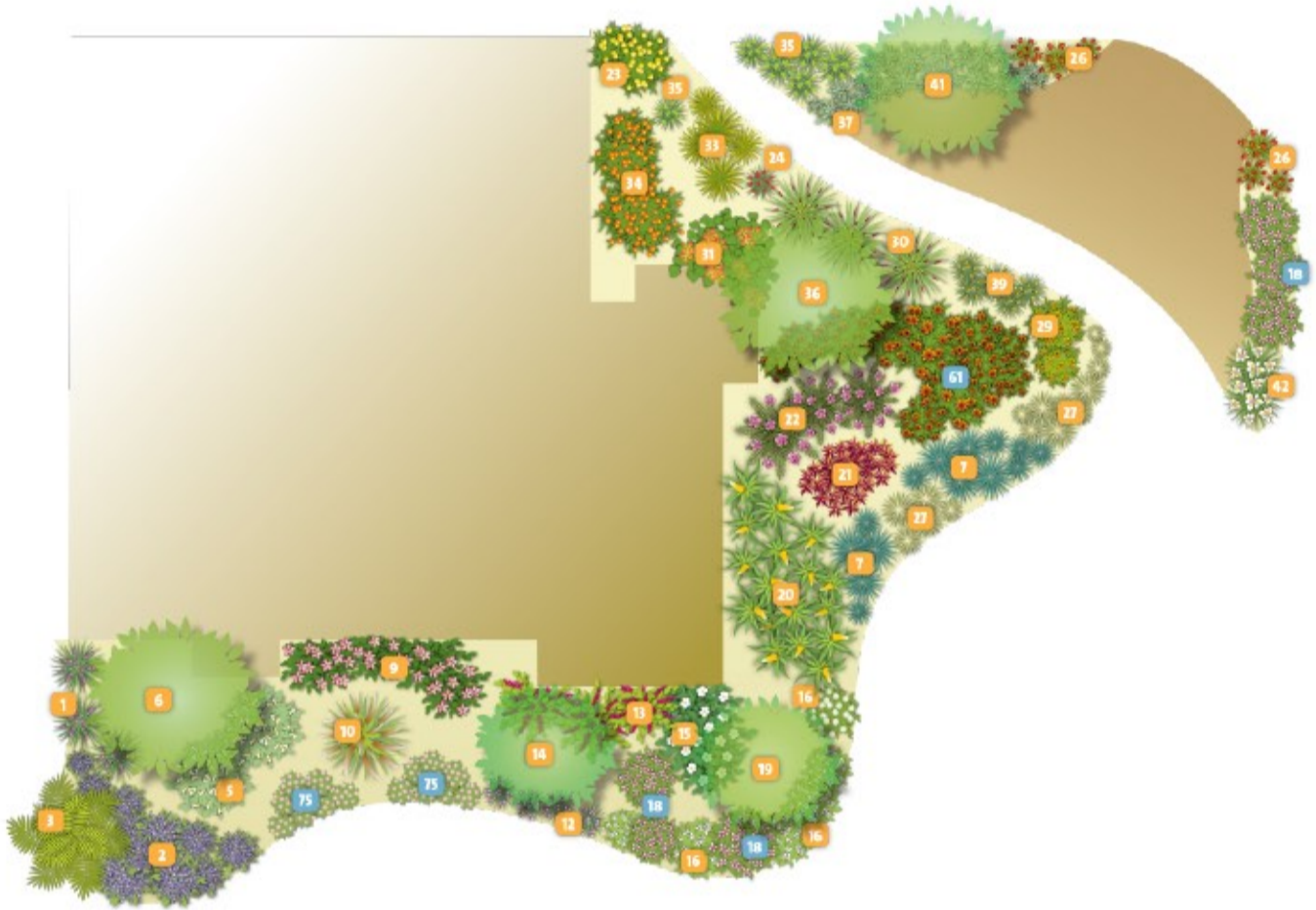




GOLETA WATER DISTRICT EXOTIC GARDEN

A WaterWise demonstration landscape

The **Exotic Garden** introduces unusual water efficient plants that are less commonly seen in this region, with bright, bold colors. The bright colors of exotic plant species are a valuable asset when designing a yard with street-facing segments. Gardens that are more prominent from the curb when viewed by passing cars may use different design elements than a typical garden. The garden has also been designed to have year-round interest, and you may notice a shared pigment throughout the garden, as even the foliage has a yellow accent.



- | | | | |
|---|---|--|---|
| 1 Liriope gigantea
<i>Giant Lilly Turf</i> | <i>Society Garlic</i> | <i>Woolly Grevillea</i> | 34 Lantana 'Radiation'
<i>Lantana</i> |
| 2 Nepeta faassenii
<i>Catmint</i> | 13 Salvia chiapensis
<i>Chiapas Sage</i> | 23 Lantana 'Spreading Sunshine'
<i>Lantana</i> | 35 Anigozanthos flavidus
<i>Kangaroo Paw</i> |
| 3 Phoenix roebelenii
<i>Pygmy Date Palm</i> | 14 Vitex angus-castus
<i>Chaste Tree</i> | 24 Anigozanthos 'Regal Claw'
<i>Kangaroo Paw</i> | 36 Tabebuia chrysostricha
<i>Golden Trumpet Tree</i> |
| 5 Correa 'Ivory Bells'
<i>Australian Fuchsia</i> | 15 Cistus hybridus
<i>White Rockrose</i> | 26 Kniphofia uvaria
<i>Red Hot Poker, Torch Lily,
Poker Plant</i> | 37 Artemisia 'Powis Castle'
<i>Silver Wormwood</i> |
| 6 Ceratonia siliqua (male)
<i>Carob</i> | 16 Coleonema album
<i>White Breath of Heaven</i> | 27 Stipa tenuissima
<i>Texas Needle Grass</i> | 39 Bulbine frutescens
<i>Stalked Bulbine</i> |
| 7 Helictotrichon sempervirens
<i>Blue Oat Grass</i> | 18 Gaura 'Siskiyou Pink'
<i>Pink Gaura</i> | 29 Euryops pectinatus 'Viridis'
<i>Golden Daisy Shrub</i> | 41 Quercus tomatella
<i>Island Oak</i> |
| 9 Rhamphiolepis 'Jack Evans'
<i>India Hawthorn</i> | 19 Arbutus 'Marina'
<i>Strawberry Tree</i> | 30 Chondropetalum tectorum
<i>Cape Rush</i> | 42 Dietes
<i>Fortnight Lily</i> |
| 10 Miscanthus transmorisonensis
<i>Evergreen Eulalia</i> | 20 Aloe striatula
<i>Fence Aloe</i> | 31 Bauhinia galpinii
<i>Red Orchid Bush</i> | 61 Leonotis leonurus
<i>Lion's Tail</i> |
| 12 Tulbaghia violacea | 21 Leucadendron 'Safari Sunset'
<i>Safari Sunset</i> | 33 Phormium 'Yellow Wave'
<i>New Zealand Flax</i> | 75 Erigeron karvinskianus
<i>Santa Barbara Daisy</i> |
| | 22 Grevillea lanigera | | |



goletawater.com





GOLETA WATER DISTRICT

TRADITIONAL GARDEN

A WaterWise demonstration landscape

The Traditional Garden is styled toward use around older, or more traditional style homes. The plants selected for this area are similar to plants that have been commonly used in gardens for the last fifty years. In general, they are water thrifty and blend well with established gardens, making them

especially appropriate for those interested in maintaining a traditional garden, but looking for a low water alternative. The lawn element, often over-used in traditional style gardens, has been replaced with water-saving alternatives, such as mulch and low water/native grasses.



- | | | | | |
|---|--|--|--|---|
| 1 <i>Quercus tomentella</i>
<i>Island Oak</i> | 7 <i>Convolvulus sabatius</i>
<i>Ground Morning Glory</i> | 12 <i>Rhapis excelsa</i>
<i>Lady Palm</i> | 17 <i>Pittosporum tobira</i> 'Variegata'
<i>Variegated Tobira</i> | 27 <i>Cotoneaster lacteus</i>
<i>Red Clusterberry</i> |
| 2 <i>Cotoneaster buxifolia</i>
<i>Boxwood Cotoneaster</i> | 8 <i>Cistus skanbergii</i>
<i>Rockrose</i> | 13 <i>Phoenix roebelenii</i>
<i>Pygmy Date Palm</i> | 19 <i>Juniperus conferta</i>
<i>Shore Juniper</i> | 28 <i>Rhaphiolepis umbellata</i> 'Minor'
<i>Dwarf Yeddo Hawthorn</i> |
| 3 <i>Asparagus densiflorus</i> 'Myers'
<i>Asparagus fern</i> | 9 <i>Cercis</i> 'Forest Pansy'
<i>Red Leaf Redbud</i> | 14 <i>Nandina domestica</i>
'Compacta'
<i>Heavenly Bamboo</i> | 21 <i>Liriope gigantea</i>
<i>Giant Turf Lilly</i> | 31 <i>Chondropetalum tectorum</i>
<i>Cape Rush</i> |
| 4 <i>Lantana sellowiana</i> 'Alba'
<i>White Trailing Lantana</i> | 10 <i>Correa</i> 'Ivory Bells'
<i>Australian Fuchsia</i> | 15 <i>Agapanthus africanus</i>
<i>Lily of the Nile</i> | 23 <i>Lantana</i> 'Spreading Sunshine'
<i>Lantana</i> | 34 <i>Tristaniopsis laurina</i>
<i>Water Gum</i> |
| 5 <i>Abelia</i> 'Edward Goucher'
<i>Pink Abelia</i> | 11 <i>Howea fosteriana</i>
<i>Kentia Palm</i> | 16 <i>Berberis thunbergii</i> 'Nana'
<i>Dwarf Japanese Barberry</i> | 24 <i>Arctostaphylos</i> 'Dr Hurd'
<i>Manzanita</i> | 35 <i>Dietes</i> 'Orange Drop'
<i>Dwarf Fortnight Lily</i> |



goletawater.com





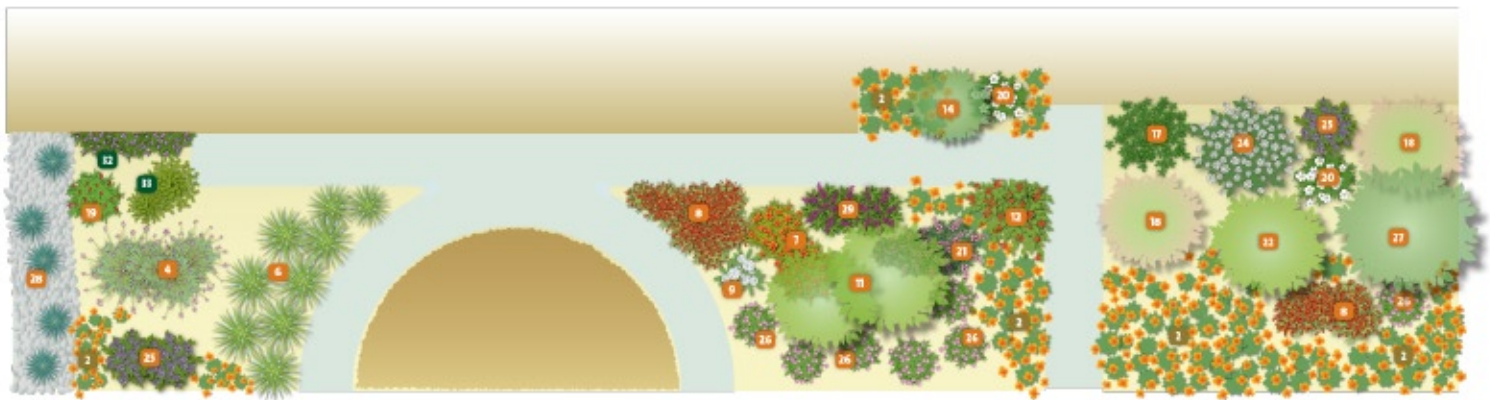
GOLETA WATER DISTRICT

CALIFORNIA NATIVE GARDEN

A WaterWise demonstration landscape

The California Native Garden demonstrates plants that are native to our region. Native plants provide habitat for local and migratory birds and act as hosts for beneficial insects that can reduce dependence on chemical pest controls. Although gardens are often planted with all

native plants, many of these plants can be used with any style of landscape. They are also the best-adapted plants for our local soils, and often need little to no fertilizer or water to look their best.



- | | | | | |
|---|---|--|---|--|
| 2 Eschscholzia californica
<i>California Poppy</i> | 9 Achillea millefolium
<i>Common Yarrow</i> | 18 Cercis occidentalis
<i>Western Redbud</i> | 24 Ceanothus 'Snow Ball'
<i>Monterey Ceanothus</i> | 29 Salvia spathacea
<i>Hummingbird Sage</i> |
| 4 Salvia 'California Spreader'
<i>Spreading Sage</i> | 11 Lyonothamnus asplenifolius
<i>Catalina Ironwood</i> | 19 Ribes speciosa
<i>Fuchsia-flowering Gooseberry</i> | 25 Ceanothus 'Frosty Blue'
<i>Wild Lilac</i> | 32 Hardenbergia violacea
<i>Purple Lilac Vine</i> |
| 6 Leymus (Elymus) 'Canyon Prince'
<i>Blue Giant Wild Rye</i> | 12 Galvezia speciosa
<i>Island Snapdragon</i> | 20 Carpenteria californica
<i>Bush Anemone</i> | 26 Verbena peruviana
<i>Rose Verbena</i> | 33 Myrsine africana
<i>African Boxwood</i> |
| 7 Mimulus (Diplacus) hybridus
<i>Yellow Monkeyflower</i> | 14 Podocarpus macrophyllus
<i>Yew Pine</i> | 21 Penstemon gloxinioide
<i>Garden Penstemon</i> | 27 Quercus agrifolia
<i>Coast live oak</i> | |
| 8 Epilobium canum
<i>California Fuchsia</i> | 17 Ribes viburnifolium
<i>Evergreen Currant</i> | 22 Aesculus californica
<i>California Buckeye</i> | 28 Juncus patens
<i>Elk Blue</i> | |



goletawater.com



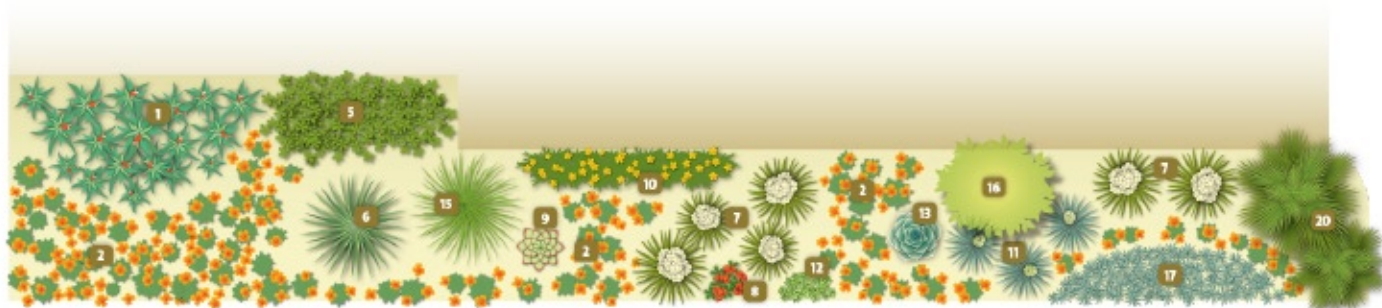


GOLETA WATER DISTRICT DESERT GARDEN

A WaterWise demonstration landscape

The Desert Garden is predominated by plants that are most commonly used in arid or southwestern-style gardens. The garden features cacti and succulents, cutting water consumption dramatically as succulents alone use as much as 80% less water than non-native species.

Plants that have adapted to desert landscapes employ a number of water-saving adaptations to stave off water loss in areas with low precipitation rates and harsh desert sun exposure. They should require no supplemental irrigation within two to three years of planting.



- 1 *Aloe x spinosissima*
Dwarf Tree Aloe
- 2 *Eschscholzia californica*
California Poppy
- 5 *Portulacaria afra*
Elephant Salad
- 6 *Dracaena draco*
Dragon Tree

- 7 *Yucca whipplei*
Our Lord's Candle
- 8 *Euphorbia milii*
Crown of Thorns
- 9 *Echeveria agavoides*
Agave-leafed Echeveria
- 10 *Macfadyena unguis-cati*
Cat's Claw Vine

- 11 *Dasyliirion wheeleri*
Blue Yucca
- 12 *Sedum brevifolium*
Shortleaf Stonecrop
- 13 *Echeveria 'Imbricata'*
Hen and Chickens
- 15 *Dasyliirion longissimum*
Mexican Tree Grass

- 16 *Parkinsonia aculeata*
Palo Verde Tree
- 17 *Senecio mandraliscae*
Kleinia
- 20 *Brahea edulis*
Guadalupe Palm



goletawater.com





Welcome to Goleta Water District

August 28, 2015

[Conservation](#) | [Customer Service](#) | [Rates, Bills & Budget](#) | [Agendas & Minutes](#) | [Newsletters & Press](#) | [About the District](#) | [Home](#)
[Access Online Account](#) | [New Water Services](#) | [Backflow / Cross Connection](#) | [Videos](#) | [Documents](#) | [Water Supply](#) | [Water Quality](#)
[Home](#) / [California Native Garden](#)

California Native Garden



GOLETA WATER DISTRICT

CALIFORNIA NATIVE GARDEN

A WaterWise demonstration landscape



The **California Native Garden** demonstrates plants that are native to our region. Many gardeners prefer to use native plants because they blend well with the natural landscape, provide habitat for local wildlife, and their water needs are compatible with the arid nature of our climate.

Located between the Desert Garden and Traditional Garden areas, the Native Garden borders Hollister Avenue. The plants used in this section of the Demonstration Garden will work well for those who live in more rustic areas with existing native vegetation. Native plants provide habitat for local and migratory birds and act as hosts for beneficial insects that can reduce dependence on chemical pest controls. Although gardens are often planted with all native plants, many of these plants can be used with any style of landscape. They are also the best-adapted plants for our local soils, and often need little to no fertilizer or water to look their best.

Why garden with native plants?

- **Use less water** – Plants native to our arid climate have adapted to use less water than many of their non-native counterparts.
- **Lower maintenance** – Native plants will require less water, fertilizer, pruning, pesticides, and general maintenance than many common, non-native garden plants.
- **Less need for pesticides** – Natives have developed their own natural defense against many of the pests and diseases commonplace in their region. This means less garden toxins will make it into our creeks and watersheds.
- **Attract more wildlife** – Research shows that native wildlife prefers native plants.
- **Ecological benefits** – Using native plant species can help create bridges between native areas that have been isolated from other natives by disturbance of the natural landscape.

Click [here](#) to download a Site Map and Plant List PDF for the California Native Garden area.