

**SCREENING REPORT FOR AN ENVIRONMENTAL AUTHORIZATION OR
FOR A PART TWO AMENDMENT OF AN ENVIRONMENTAL AUTHORISATION
AS REQUIRED BY THE 2014 EIA REGULATIONS – PROPOSED SITE
ENVIRONMENTAL SENSITIVITY**

EIA Reference number: NA

Project name: Erf 4912, Montague Gardens 9 Bolt Street, Cape Town

Project title: Zest Polyurethanes Erf 4912, Montague Gardens 9 Bolt Street, Cape Town

Date screening report generated: 02/04/2020 15:16:34

Applicant: Zest Polyurethanes

Compiler: Eco Impact

Compiler signature:

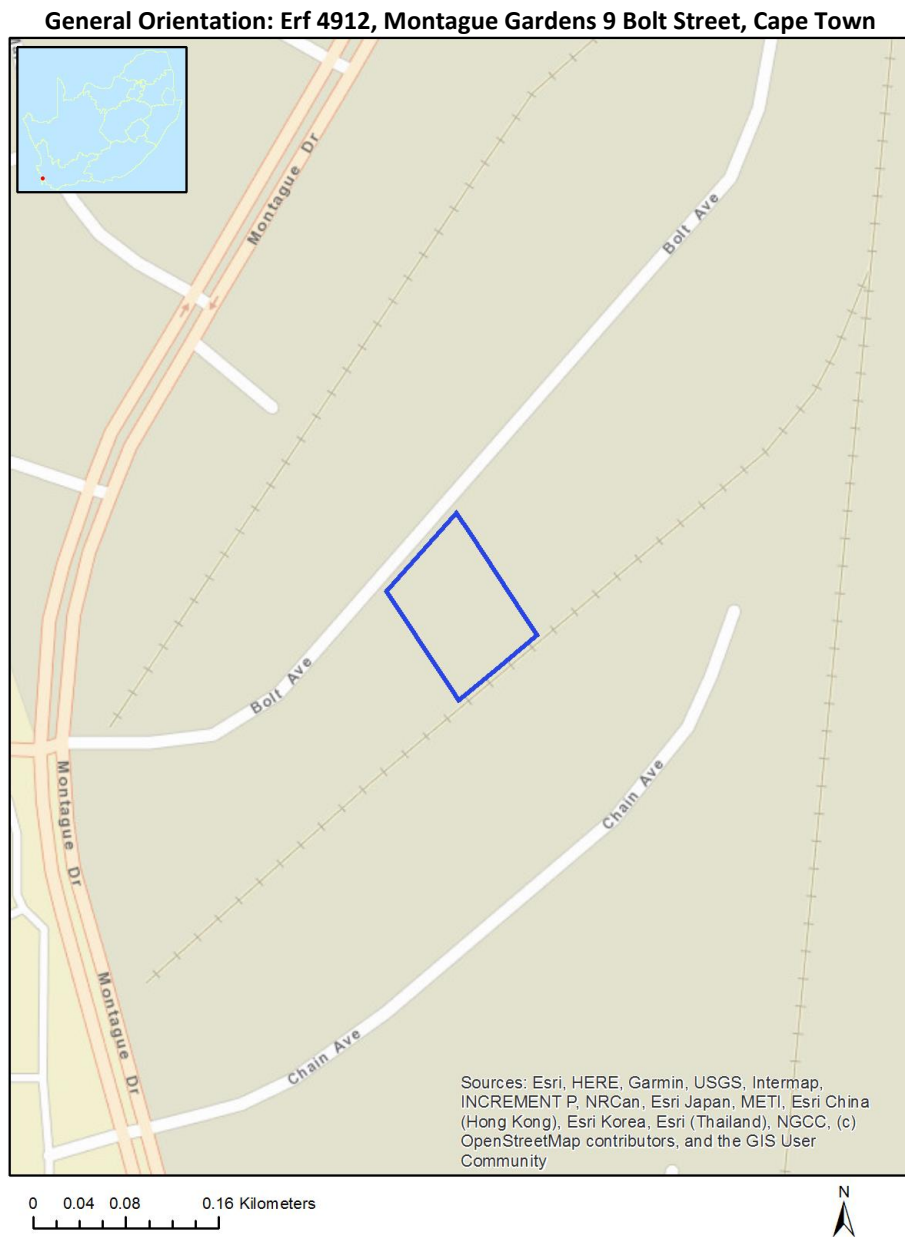
.....

Table of Contents

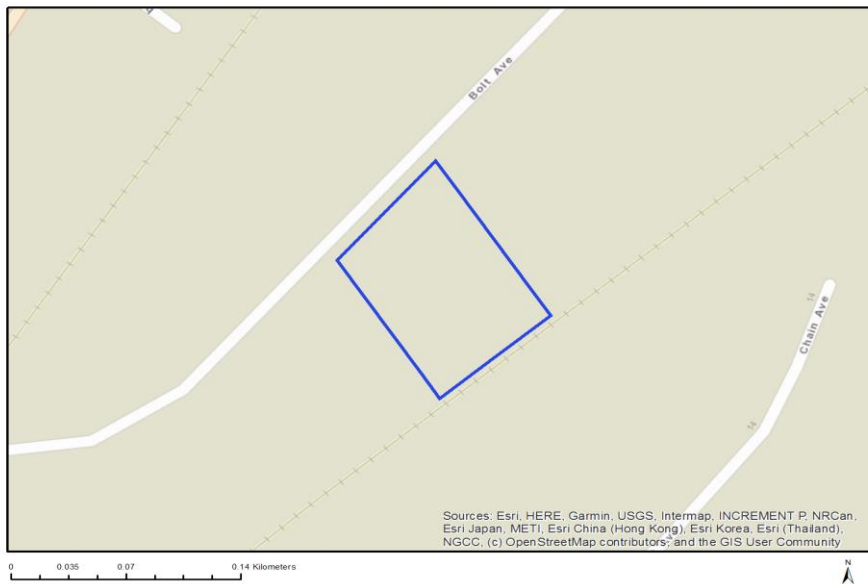
- Proposed Project Location 3
 - Orientation map 1: General location 3
- Map of proposed site and relevant area(s) 4
 - Cadastral details of the proposed site 4
 - Wind and Solar developments with an approved Environmental Authorisation or applications under consideration within 30 km of the proposed area 4
 - Environmental Management Frameworks relevant to the application 4
- Environmental screening results and assessment outcomes 5
 - Relevant development incentives, restrictions, exclusions or prohibitions 5
- Map indicating proposed development footprint within applicable development incentive, restriction, exclusion or prohibition zones 6
 - Proposed Development Area Environmental Sensitivity 6
 - Specialist assessments identified 7
- Results of the environmental sensitivity of the proposed area 9
 - MAP OF RELATIVE AGRICULTURE THEME SENSITIVITY 9
 - MAP OF RELATIVE ANIMAL SPECIES THEME SENSITIVITY 10
 - MAP OF RELATIVE AQUATIC BIODIVERSITY THEME SENSITIVITY 11
 - MAP OF RELATIVE CIVIL AVIATION THEME SENSITIVITY 12
 - MAP OF RELATIVE PLANT SPECIES THEME SENSITIVITY 13
 - MAP OF RELATIVE DEFENCE THEME SENSITIVITY 15
 - MAP OF RELATIVE TERRESTRIAL BIODIVERSITY THEME SENSITIVITY 16

Proposed Project Location

Orientation map 1: General location



Map of proposed site and relevant area(s)



Cadastral details of the proposed site

Property details:

No	Farm Name	Farm/ Erf No	Portion	Latitude	Longitude	Property Type
1	MONTAGUE GARDENS	4912	0	33°52'5.89S	18°31'15.62E	Erven

Development footprint¹ vertices:

No development footprint(s) specified.

Wind and Solar developments with an approved Environmental Authorisation or applications under consideration within 30 km of the proposed area

No nearby wind or solar developments found.

Environmental Management Frameworks relevant to the application

No intersections with EMF areas found.

¹ “development footprint”, means the area within the site on which the development will take place and includes all ancillary developments for example roads, power lines, boundary walls, paving etc. which require vegetation clearance or which will be disturbed and for which the application has been submitted.

Environmental screening results and assessment outcomes

The following sections contain a summary of any development incentives, restrictions, exclusions or prohibitions that apply to the proposed development site as well as the most environmental sensitive features on the site based on the site sensitivity screening results for the application classification that was selected. The application classification selected for this report is: Infrastructure|Localised infrastructure|Storage|Dangerous Goods|Chemicals|Storage_Chemicals.

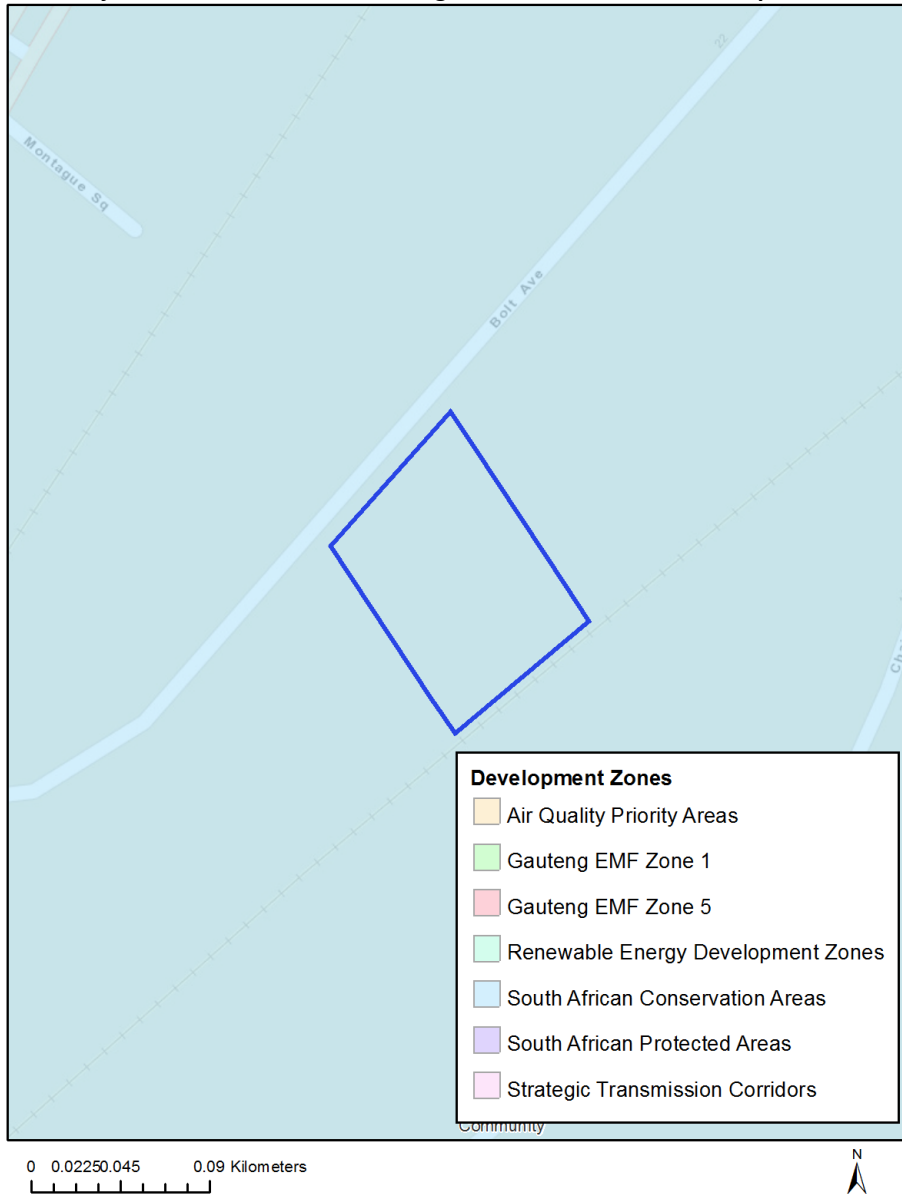
Relevant development incentives, restrictions, exclusions or prohibitions

The following development incentives, restrictions, exclusions or prohibitions and their implications that apply to this site are indicated below.

Incentive, restriction or prohibition	Implication
Strategic Transmission Corridor-Central corridor	https://screening.environment.gov.za/ScreeningDownloads/DevelopmentZones/GNR_350_of_13_April_2017.pdf
South African Conservation Areas	https://screening.environment.gov.za/ScreeningDownloads/DevelopmentZones/SACAD_OR_2019_Q4_Metadata.pdf

Map indicating proposed development footprint within applicable development incentive, restriction, exclusion or prohibition zones

Project Location: Erf 4912, Montague Gardens 9 Bolt Street, Cape Town



Proposed Development Area Environmental Sensitivity

The following summary of the development site environmental sensitivities is identified. Only the highest environmental sensitivity is indicated. The footprint environmental sensitivities for the proposed development footprint as identified, are indicative only and must be verified on site by a suitably qualified person before the specialist assessments identified below can be confirmed.

Theme	Very High sensitivity	High sensitivity	Medium sensitivity	Low sensitivity
Agriculture Theme			X	
Animal Species Theme			X	

Aquatic Biodiversity Theme				X
Civil Aviation Theme		X		
Plant Species Theme			X	
Defence Theme			X	
Terrestrial Biodiversity Theme	X			

Specialist assessments identified

Based on the selected classification, and the environmental sensitivities of the proposed development footprint, the following list of specialist assessments have been identified for inclusion in the assessment report. It is the responsibility of the EAP to confirm this list and to motivate in the assessment report, the reason for not including any of the identified specialist study including the provision of photographic evidence of the site situation.

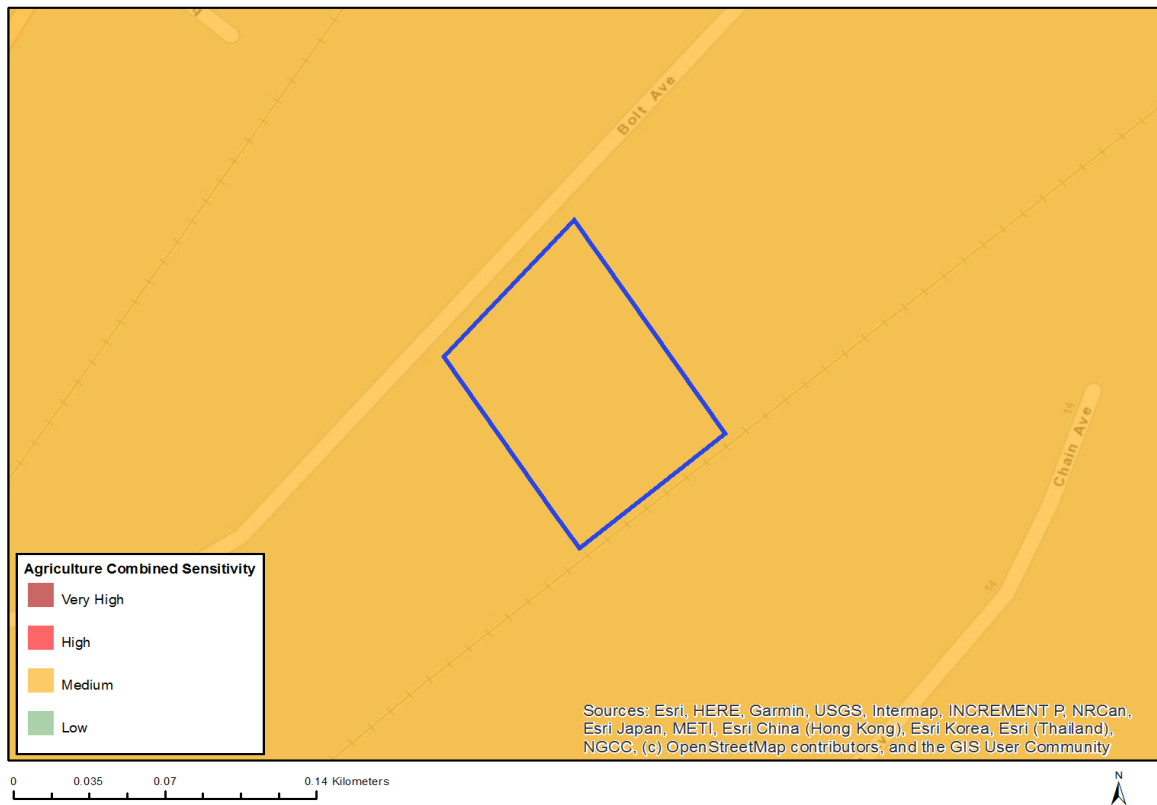
N o	Specialist assessment	Assessment Protocol
1	Agricultural Impact Assessment	https://screening.environment.gov.za/ScreeningDownloads/AssessmentProtocols/DraftGazetted_Agriculture_Assessment_Protocols.pdf
2	Archaeological and Cultural Heritage Impact Assessment	https://screening.environment.gov.za/ScreeningDownloads/AssessmentProtocols/DraftGazetted_General_Requirement_Assessment_Protocols.pdf
3	Palaeontology Impact Assessment	https://screening.environment.gov.za/ScreeningDownloads/AssessmentProtocols/DraftGazetted_General_Requirement_Assessment_Protocols.pdf
4	Terrestrial Biodiversity Impact Assessment	https://screening.environment.gov.za/ScreeningDownloads/AssessmentProtocols/DraftGazetted_Terrestrial_Biodiversity_Assessment_Protocols.pdf
5	Aquatic Biodiversity Impact Assessment	https://screening.environment.gov.za/ScreeningDownloads/AssessmentProtocols/DraftGazetted_Aquatic_Biodiversity_Assessment.pdf
6	Hydrology Assess	https://screening.environment.gov.za/ScreeningDownloads/AssessmentProtocols/DraftGazetted_General_Requirement_Assessment_Protocols.pdf

	ment	
7	Noise Impact Assessment	https://screening.environment.gov.za/ScreeningDownloads/AssessmentProtocols/DraftGazetted_Noise_Impacts_Assessment_Protocols.pdf
8	Traffic Impact Assessment	https://screening.environment.gov.za/ScreeningDownloads/AssessmentProtocols/DraftGazetted_General_Requirement_Assessment_Protocols.pdf
9	Geotechnical Assessment	https://screening.environment.gov.za/ScreeningDownloads/AssessmentProtocols/DraftGazetted_General_Requirement_Assessment_Protocols.pdf
10	Socio-Economic Assessment	https://screening.environment.gov.za/ScreeningDownloads/AssessmentProtocols/DraftGazetted_General_Requirement_Assessment_Protocols.pdf
11	Plant Species Assessment	https://screening.environment.gov.za/ScreeningDownloads/AssessmentProtocols/DraftGazetted_General_Requirement_Assessment_Protocols.pdf
12	Animal Species Assessment	https://screening.environment.gov.za/ScreeningDownloads/AssessmentProtocols/DraftGazetted_General_Requirement_Assessment_Protocols.pdf

Results of the environmental sensitivity of the proposed area.

The following section represents the results of the screening for environmental sensitivity of the proposed site for relevant environmental themes associated with the project classification. It is the duty of the EAP to ensure that the environmental themes provided by the screening tool are comprehensive and complete for the project. Refer to the disclaimer.

MAP OF RELATIVE AGRICULTURE THEME SENSITIVITY

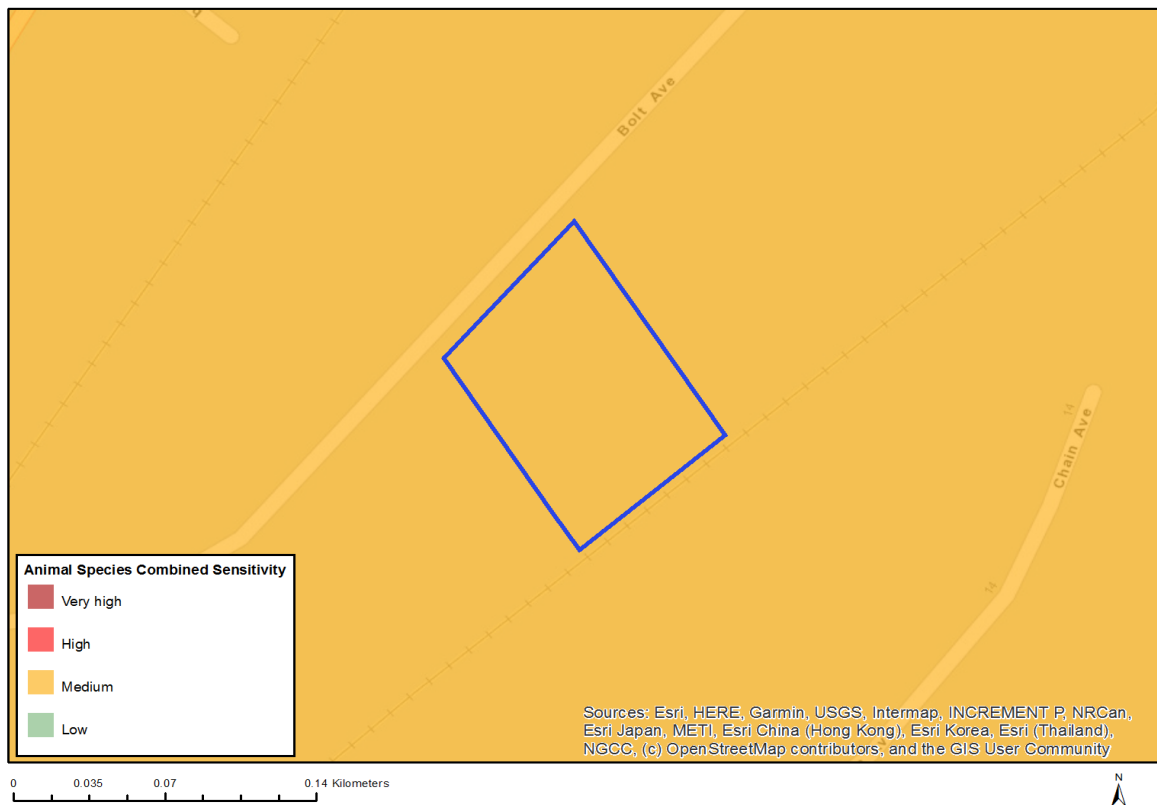


Very High sensitivity	High sensitivity	Medium sensitivity	Low sensitivity
		X	

Sensitivity Features:

Sensitivity	Feature(s)
Medium	Land capability;06. Low-Moderate/07. Low-Moderate/08. Moderate

MAP OF RELATIVE ANIMAL SPECIES THEME SENSITIVITY

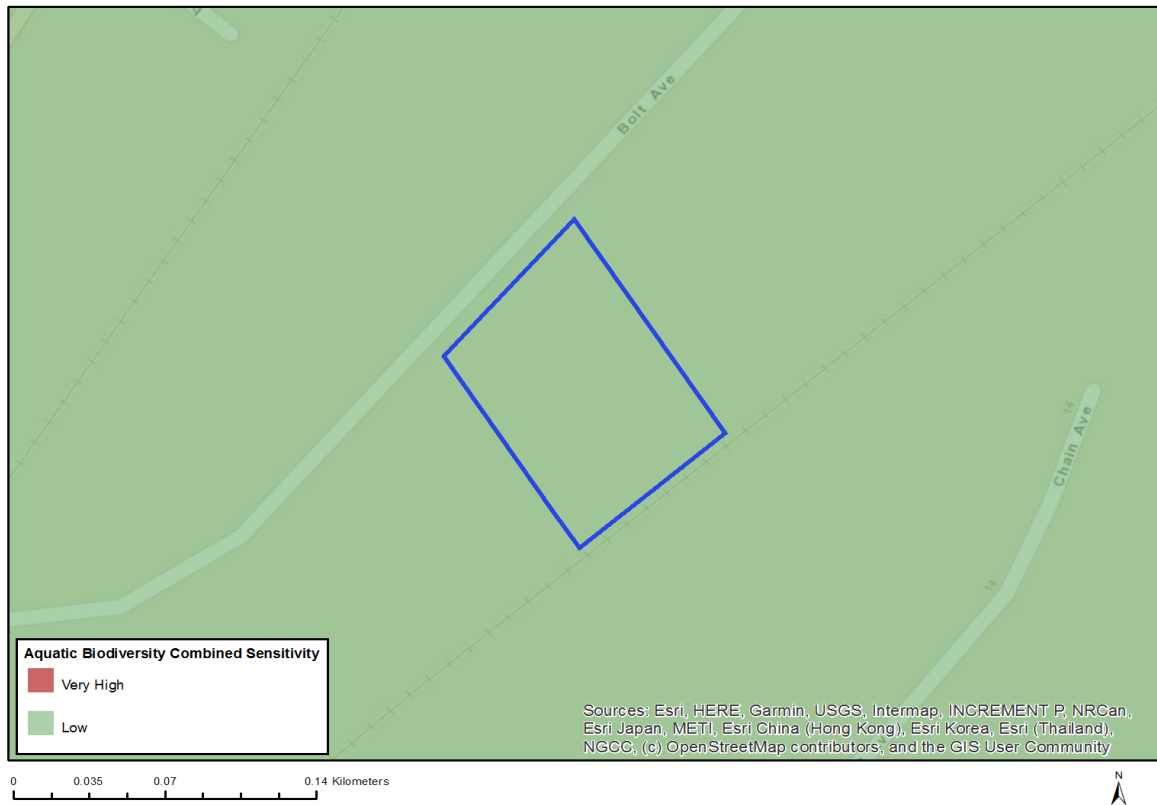


Very High sensitivity	High sensitivity	Medium sensitivity	Low sensitivity
		X	

Sensitivity Features:

Sensitivity	Feature(s)
Medium	Insecta-Torynesis mintha piquetbergensis
Medium	Sensitive species 2
Medium	Sensitive species 7
Medium	Insecta-Aloeides egerides
Medium	Insecta-Kedestes lenis lenis

MAP OF RELATIVE AQUATIC BIODIVERSITY THEME SENSITIVITY

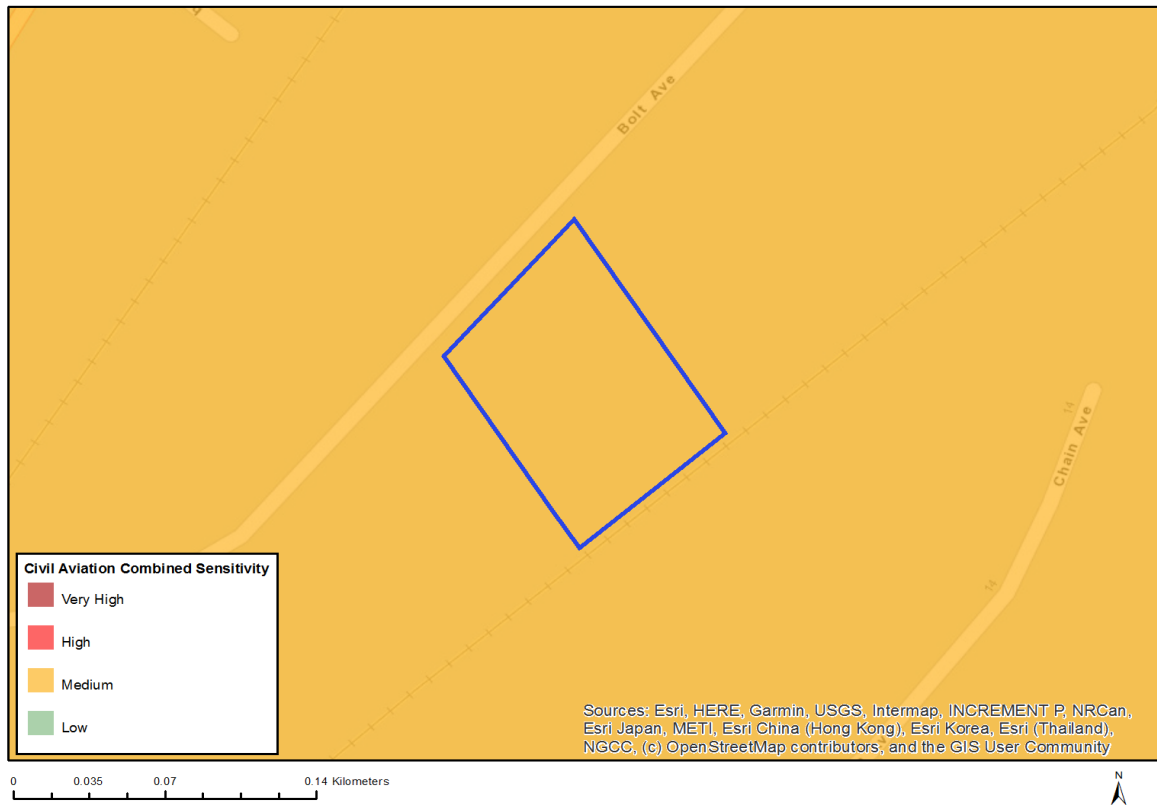


Very High sensitivity	High sensitivity	Medium sensitivity	Low sensitivity
			X

Sensitivity Features:

Sensitivity	Feature(s)
Low	Low sensitivity

MAP OF RELATIVE CIVIL AVIATION THEME SENSITIVITY

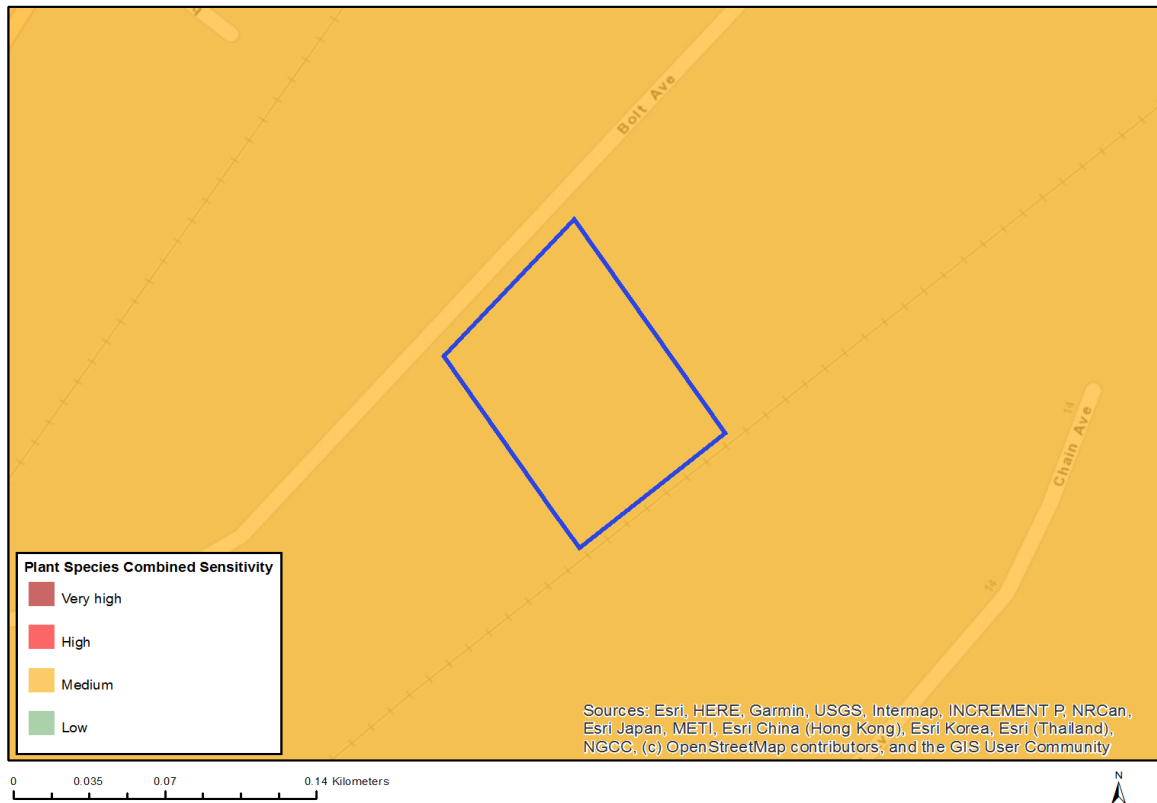


Very High sensitivity	High sensitivity	Medium sensitivity	Low sensitivity
	X		

Sensitivity Features:

Sensitivity	Feature(s)
High	Within 15 km of a civil aviation radar
High	Between 8 and 15 km from a major civil aviation aerodrome
Medium	Within 5 km of an air traffic control or navigation site
Medium	Between 8 and 15 km of other civil aviation aerodrome

MAP OF RELATIVE PLANT SPECIES THEME SENSITIVITY



Very High sensitivity	High sensitivity	Medium sensitivity	Low sensitivity
		X	

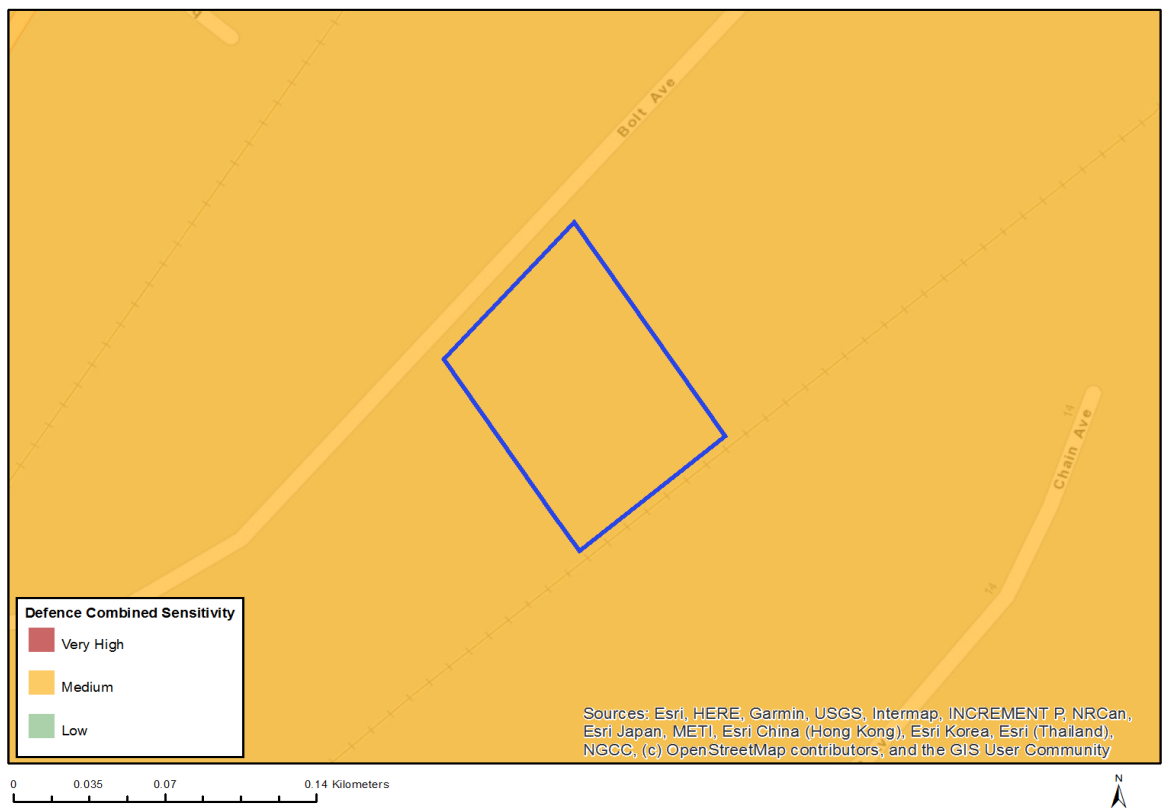
Sensitivity Features:

Sensitivity	Feature(s)
Medium	Microdon capitatus
Medium	Pentameris bachmannii
Medium	Pentameris pholiuroides
Medium	Antimima aristulata
Medium	Cleretum clavatum
Medium	Lobostemon capitatus
Medium	Echiostachys incanus
Medium	Sensitive species 76
Medium	Geissorhiza brehmii
Medium	Geissorhiza humilis
Medium	Ixia monadelpha
Medium	Sensitive species 457
Medium	Sensitive species 447
Medium	Sensitive species 642
Medium	Sensitive species 590
Medium	Pauridia canaliculata
Medium	Ruschia geminiflora
Medium	Ruschia tecta
Medium	Drosanthemum hispifolium
Medium	Oxalis natans
Medium	Erica bolusiae var. bolusiae
Medium	Stylapterus fruticosus

Medium	Sensitive species 683
Medium	<i>Wachendorfia brachyandra</i>
Medium	<i>Hessea cinnamomea</i>
Medium	<i>Isoetes capensis</i>
Medium	<i>Isolepis inconspicua</i>
Medium	<i>Isolepis venustula</i>
Medium	<i>Trianoptiles solitaria</i>
Medium	<i>Elegia prominens</i>
Medium	<i>Elegia verreauxii</i>
Medium	<i>Restio sabulosus</i>
Medium	<i>Restio impolitus</i>
Medium	<i>Restio rigoratus</i>
Medium	<i>Restio pratensis</i>
Medium	<i>Restio duthieae</i>
Medium	<i>Restio micans</i>
Medium	<i>Restio paludosus</i>
Medium	Sensitive species 306
Medium	Sensitive species 286
Medium	Sensitive species 287
Medium	<i>Amphithalea ericifolia</i> subsp. <i>erecta</i>
Medium	<i>Acrolophia bolusii</i>
Medium	<i>Argyrobium velutinum</i>
Medium	<i>Pterygodium cruciferum</i>
Medium	<i>Xiphotheca lanceolata</i>
Medium	<i>Xiphotheca reflexa</i>
Medium	<i>Gnidia spicata</i>
Medium	<i>Passerina paludosa</i>
Medium	<i>Lachnaea grandiflora</i>
Medium	<i>Lachnaea uniflora</i>
Medium	<i>Lachnaea capitata</i>
Medium	<i>Steirodiscus tagetes</i>
Medium	<i>Senecio foeniculoides</i>
Medium	<i>Cotula pusilla</i>
Medium	<i>Athanasia capitata</i>
Medium	<i>Arctotis angustifolia</i>
Medium	<i>Psoralea glaucina</i>
Medium	<i>Psoralea alata</i>
Medium	<i>Arctotheca forbesiana</i>
Medium	<i>Diosma dichotoma</i>
Medium	<i>Agathosma corymbosa</i>
Medium	<i>Agathosma glabrata</i>
Medium	<i>Macrostylis villosa</i> subsp. <i>villosa</i>
Medium	<i>Macrostylis cassiopoides</i> subsp. <i>dregeana</i>
Medium	<i>Cliffortia ericifolia</i>
Medium	<i>Cliffortia hirta</i>
Medium	<i>Liparia splendens</i> subsp. <i>splendens</i>
Medium	<i>Limonium purpuratum</i>
Medium	<i>Muraltia brevicornu</i>
Medium	<i>Muraltia macropetala</i>
Medium	<i>Muraltia mitior</i>
Medium	<i>Aspalathus lebeckioides</i>
Medium	<i>Aspalathus lotoides</i> subsp. <i>lotoides</i>
Medium	<i>Aspalathus araneosa</i>
Medium	<i>Aspalathus recurva</i>
Medium	<i>Aspalathus retroflexa</i> subsp. <i>bicolor</i>
Medium	<i>Aspalathus tylodes</i>
Medium	Sensitive species 547
Medium	<i>Phyllica harveyi</i>
Medium	<i>Rafnia angulata</i> subsp. <i>humilis</i>
Medium	<i>Podalyria sericea</i>

Medium	Skiatophytum skiatophytoides
Medium	Thesium ecklonianum
Medium	Aponogeton angustifolius
Medium	Leucadendron thymifolium
Medium	Leucadendron cinereum
Medium	Leucadendron floridum
Medium	Leucadendron lanigerum var. lanigerum
Medium	Leucadendron levisanus
Medium	Leucospermum hypophyllocarpodendron subsp. canaliculatum
Medium	Leucospermum hypophyllocarpodendron subsp. hypophyllocarpodendron
Medium	Leucospermum rodolentum
Medium	Protea scolymocephala
Medium	Protea burchellii
Medium	Diastella proteoides
Medium	Serruria brownii
Medium	Serruria cyanoides
Medium	Serruria decipiens
Medium	Serruria aemula
Medium	Serruria trilopha
Medium	Lampranthus amoenus
Medium	Lampranthus leptaleon
Medium	Lampranthus scaber
Medium	Lampranthus sociorum
Medium	Lampranthus stenopetalus
Medium	Lampranthus stenus
Medium	Lampranthus tenuifolius
Medium	Lampranthus debilis
Medium	Lampranthus filicaulis
Medium	Lampranthus glaucus

MAP OF RELATIVE DEFENCE THEME SENSITIVITY

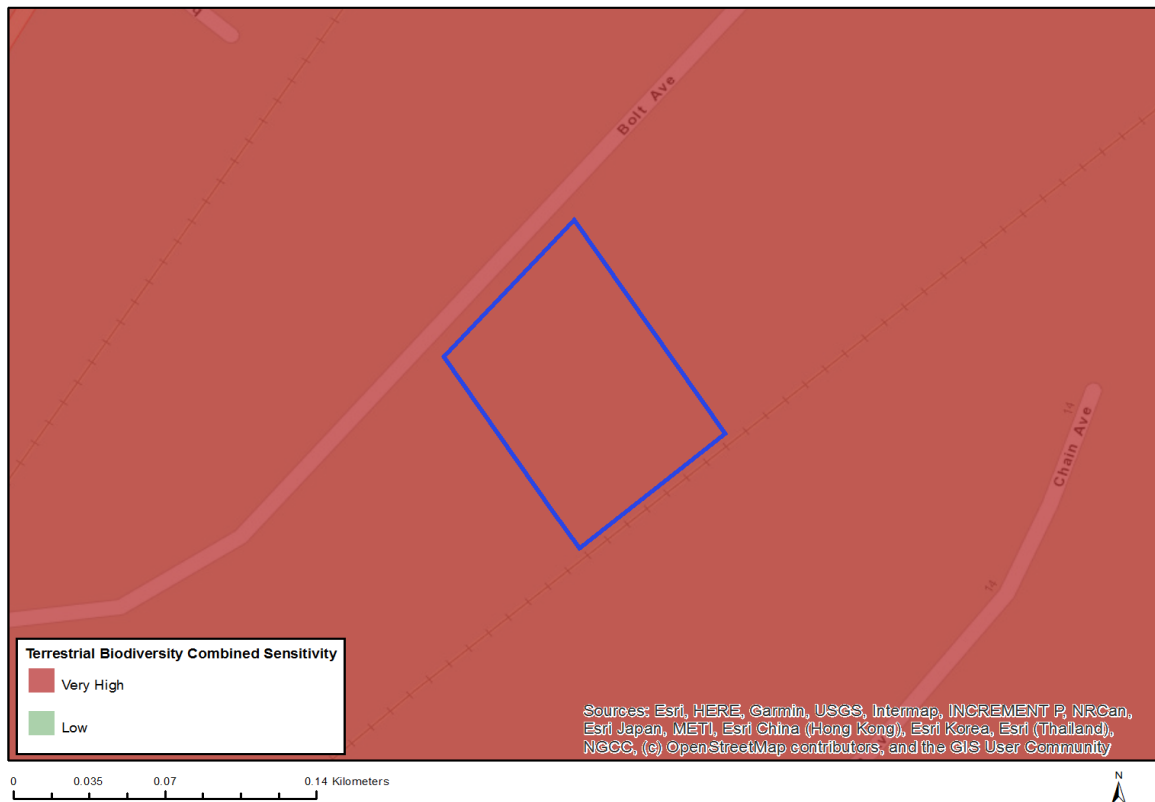


Very High sensitivity	High sensitivity	Medium sensitivity	Low sensitivity
		X	

Sensitivity Features:

Sensitivity	Feature(s)
Medium	Defence Site

MAP OF RELATIVE TERRESTRIAL BIODIVERSITY THEME SENSITIVITY



Very High sensitivity	High sensitivity	Medium sensitivity	Low sensitivity
X			

Sensitivity Features:

Sensitivity	Feature(s)
Very High	Critically endangered ecosystem