



# 2018 BERKSHIRE BIOBLITZ

a 24 hour biological survey

## SEPTEMBER 15-16

HANDS ON  
SCIENCE  
FAMILY  
PROGRAMS  
WILDLIFE  
TRACKING

Join experts in the field as they survey as many living beings as they can over 24 hours - including trees, fungi, mammals, fish, birds, reptiles, bugs, and more.

**Drop in anytime for nature walks and activities.**

Saturday night after dark: Owl Prowl and Moth Demo

FREE & OPEN TO ALL

## HOPKINS MEMORIAL FOREST • WILLIAMSTOWN, MA

Hosted by William's College and sponsored by Dr. Augie's Science Education Programs and Berkshire Environmental Action Team (BEAT).



Williams

[berkshirebioblitz.org](http://berkshirebioblitz.org) • (413) 230-7321

# **Berkshire Bioblitz Report 2018**

Compiled and Reported by Lisa Provencher, Dr. Augie's Science Programs,  
Elizabeth Orenstein, Berkshire Environmental Action Team (BEAT), and our volunteers

## **I. Acknowledgements**

We warmly thank the many scientists and participants who made this years Berkshire Bioblitz a success. Our current understanding of the biodiversity of living things in the Berkshires is due largely to the efforts, involvement and dedication of community specialists and interested citizens who have participated in the Berkshire Bioblitz over the years.

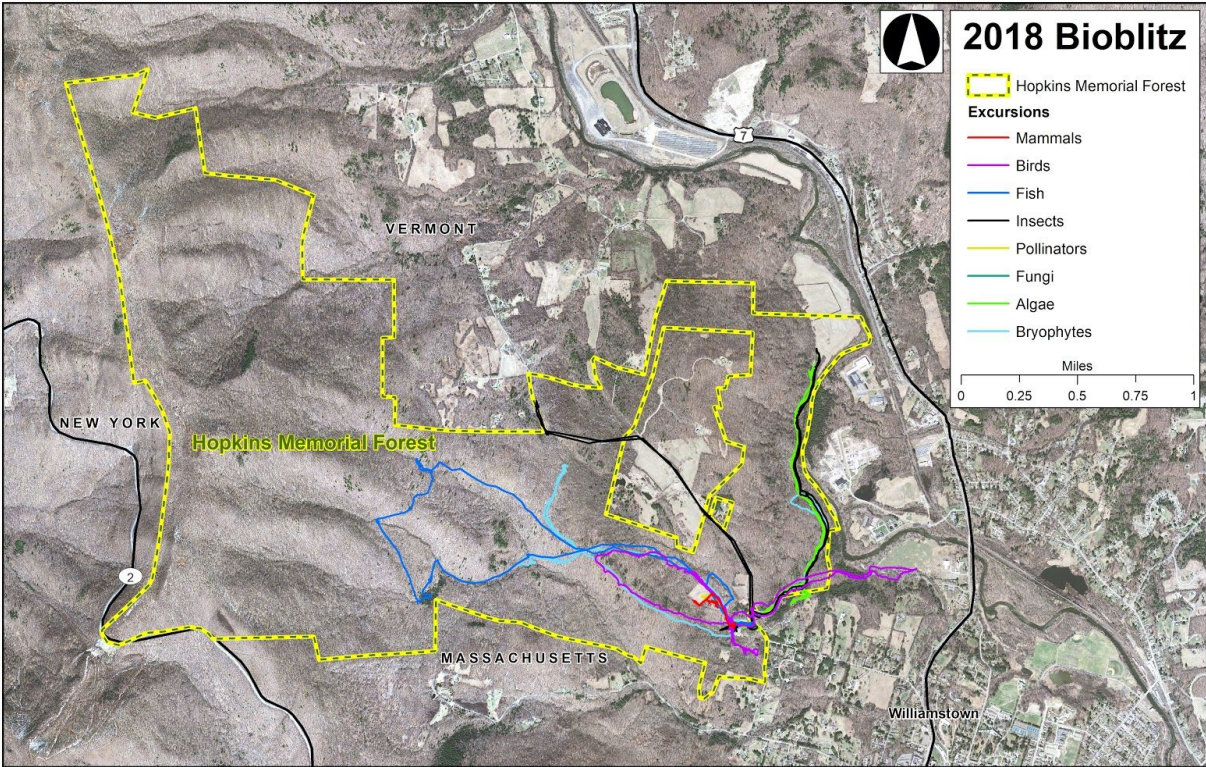
Special thanks this year goes out to Andrew Jones of Williams College for his planning, organizing, and forging new connections with local experts (and equally importantly - offering amazing food). Special thanks goes to the indispensable Jane Winn and the extraordinary Elizabeth Orenstein of Berkshire Environmental Action Team (BEAT) for organizing, planning, and tallying data for this event. Volunteers were present throughout the event, helping scientists and the public sign in, orient at the location, and enter and tally data.

## **II. 2018 Summary**

The 9th annual Berkshire Bioblitz 2018 took place between 12:00pm September 15 and 12:00pm on September 16. Over 150 biologists, students, volunteers and specialists identified 481 species of living things in a 24 hour period at Hopkins Memorial Forest in Williamstown Massachusetts. Hopkins Memorial Forest is a 2,600 acre reserve in western Massachusetts and parts of New York and Vermont. It is managed by the Williams College Center for Environmental Studies to facilitate research and undergraduate teaching activities while preserving and monitoring forest resources. The Bioblitz was hosted by Williams College and co-sponsored by Dr. Augie's Science Education Programs and Berkshire Environmental Action Team (BEAT). The goal of the Bioblitz is for citizens to learn first-hand the importance of a healthy, active ecosystem in their own community by joining experts in the field and at the same time gather important, and sometimes first time, data about our local biodiversity. The data collected offers information on how plant and wildlife populations may change over time. "While we have been studying the major species of plants and animals there since the mid-1930s, there are groups of organisms, such as mosses and fungi, that we know relatively little about, but really are important." Hank Art, Rosenberg Professor of Environmental Studies and Biology, emeritus, at Williams College.

See appendix for complete lists of species identified.

# Map of Hopkins Memorial Forest



# Photos





# 2018 BERKSHIRE BIOBLITZ

a 24 hour biological survey  
SEPTEMBER 15-16

HANDS ON  
SCIENCE  
FAMILY  
PROGRAMS  
WILDLIFE  
TRACKING

Join experts in the field as they survey as many living beings as they can over 24 hours - including trees, fungi, mammals, fish, birds, reptiles, bugs, and more.

Drop in anytime for nature walks and activities.

Saturday night after dark: Owl Prowl and Moth Demo

FREE & OPEN TO ALL

HOPKINS MEMORIAL FOREST • WILLIAMSTOWN, MA

Hosted by William's College and sponsored by Dr. Angie's Science Education Programs and Berkshire Environmental Action Team (BEAT).



Williams

berkshirebioblitz.org • (413) 230-7321



## Species of interest

A few unexpected finds and species of interest were recorded. The Connecticut Warbler, an infamously hard-to-find bird found itself in the mist net set up by Dan Shustack on Sunday morning. It was a first lifer for many of the birders and visitors early that morning. This bird has a grey hood, yellow belly, and olive back. It forges by walking slowly through the underbrush, making it hard to see.

A second and less showy, a bit gruesome specimen showed up in the hindquarters of a white footed mouse, *Peromyscus leucopus* collected by Drew Jones and his students. This specimen of interest was the bot fly, *Cuterebra fontinella*, identified by Lisa Provencher.

A fun and unexpected specimen found was the handsome Spring Salamander, *Gyrinophilus porphyriticus*, also called the “Purple Salamander” found and identified by Charlie Eisman and Julia Bluth. This is an orange and purple salamander, not previously seen by many participants and visitors of this BioBlitz. It gets its name from the purple color, ‘Porphyr’ meaning purple stone in Greek.

## III Summary of community Service Efforts and Education Efforts

Contributing organizations:

Williams College	Mass Audubon Berkshire Sanctuaries
Berkshire Community College	Massachusetts College of Liberal Arts
Berkshire Environmental Action Team	The Nature Conservancy
Dr. Augie’s Science Programs	Simon’s Rock College of Bard
Hoffmann Bird Club	Williams College Center for Learning in Action
Hoosic River Watershed Association	Williamstown Rural Lands Foundation

Programs throughout the 24 hours included:

- Bird Walk with Mary Batcheller and Gordon Batcheller
- Pond Invertebrates with Karen Murray & Elena Traister
- Tracheophytes (Vascular Plants) with Hank Art & Eric Doucette
- Spiders with Joe Warfel
- Electrofishing with Ronald Bassar and Ben Lecher

- Owl Prowl with Rene Wendell
- Slime Molds with Jenks Heymeyer, Williams College Student
- Birds with the Hoffmann Bird Club
- Life in the Birdbath with Lisa Provencher, Dr. Augie's Science Programs
- Mushrooms with John Wheeler
- Moth Demonstration with Jason Crockwell, Amature Entomologist
- Mist Netting with Birds Dan Shustack, Massachusetts College of Liberal Arts, Chuck Johnson, Hugh Powell, Jonathan Pierce, Gael Hurley, Kyron Hanson
- Reptiles with Tom Tynning, Berkshire Community College
- Dragonflies with Kirsten Martin
- Leaf Miners and Invertebrates with Charlie Eisman and Julia Bluthe
- Mammal Trapping with Andrew Jones, Williams College
- Plants and Herbs with Joan Edwards, Williams College
- Animal Tracking with Elia DeMolino
- Mosses with Sue Williams

## Species survey

<b>2018 Berkshire BioBlitz Survey</b>		TOTAL:	481	
<b>Common Name</b>	<b>Order</b>	<b>Family</b>	<b>Genus</b>	<b>Species</b>
<b>INSECTS &amp; SPIDERS</b>	<b>233</b>			
	Lepidoptera	Gracillarii dae	<i>Cameraria</i>	<i>caryaefoliella</i>
	Lepidoptera	Gracillarii dae	<i>Parectopa</i>	<i>robiniella</i>
	Lepidoptera	Gracillarii dae	<i>Macrosaccus</i>	<i>robiniella</i>
	Lepidoptera	Gracillarii dae	<i>Chrysaster</i>	<i>ostensackenella</i>
	Lepidoptera	Nepticuli dae	<i>Stigmella</i>	<i>rosaefoliella</i>
	Lepidoptera	Heliozeli dae	<i>Antispila</i>	<i>freemani</i>
	Lepidoptera	Gracillarii dae	<i>Phyllocnistis</i>	<i>ampelopsiella</i>
	Lepidoptera	Nepticuli dae	<i>Stigmella</i>	<i>juglandifoliella</i>
	Lepidoptera	Momphi dae	<i>Mompha</i>	<i>terminella</i>
	Lepidoptera	Nepticuli dae	<i>Stigmella</i>	<i>rhamnicola</i>
	Lepidoptera	Incurvarii dae	<i>Paraclemensia</i>	<i>acerifoliella</i>
	Lepidoptera	Gracillarii dae	<i>Phyllocnistis</i>	<i>insignis</i>
	Lepidoptera	Gracillarii dae	<i>Phyllocnistis</i>	<i>vitifoliella</i>
	Lepidoptera	Heliozeli dae	<i>Antispila</i>	



	Lepidoptera	Gracillarii dae	<i>Cameraria</i>	<i>guttifinitella</i>
	Lepidoptera	Gracillarii dae	<i>Caloptilia</i>	<i>rhoifoliella</i>
	Lepidoptera	Gracillarii dae	<i>Leucospilapteryx</i>	<i>venustella</i>
	Lepidoptera	Bucculatr icidae	<i>Bucculatrix</i>	<i>sexnotata</i>
	Lepidoptera	Momphi dae	<i>Mompha</i>	
	Lepidoptera	Nepticuli dae	<i>Ectoedemia</i>	<i>rubifoliella</i>
	Lepidoptera	Bucculatr icidae	<i>Bucculatrix</i>	
	Lepidoptera	Elachistid ae	<i>Perittia</i>	<i>herrichiella</i>
	Lepidoptera	Gracillarii dae	<i>Acrocercops</i>	<i>astericola</i>
	Lepidoptera	Gracillarii dae	<i>Cameraria</i>	<i>ostryarella</i>
	Lepidoptera	Gracillarii dae	<i>Parornix</i>	
	Lepidoptera	Nepticuli dae	<i>Stigmella</i>	<i>quercipulchella</i>
	Lepidoptera	Gracillarii dae	<i>Phyllonorycter</i>	
	Lepidoptera	Gracillarii dae	<i>Cameraria</i>	
	Lepidoptera	Gracillarii dae	<i>Phyllonorycter</i>	<i>maestingella</i>
	Lepidoptera	Tischeriid ae	<i>Coptotriche</i>	<i>agrimoniella</i>
	Lepidoptera	Nepticuli dae	<i>Stigmella</i>	<i>prunifoliella</i>
	Lepidoptera	Gracillarii dae	<i>Caloptilia</i>	<i>serotinella</i>

	Lepidoptera	Bucculatricidae	<i>Bucculatrix</i>	<i>pomifoliella</i>
	Lepidoptera	Gracillariidae	<i>Leucanthiza</i>	<i>amphicarpeaefoliella</i>
	Lepidoptera	Stathmopodidae	<i>Stathmopoda</i>	<i>aenea</i>
	Lepidoptera	Gracillariidae	<i>Cameraria</i>	<i>hamameliella</i>
	Lepidoptera	Nepticulidae	<i>Ectoedemia</i>	<i>ulmella</i>
	Lepidoptera	Nepticulidae	<i>Stigmella</i>	<i>corylifoliella</i>
	Lepidoptera	Gracillariidae	<i>Phyllonorycter</i>	<i>argentinotella</i>
	Lepidoptera	Tortricidae	<i>Episimus</i>	<i>argutanus</i>
	Lepidoptera	Gracillariidae	<i>Cremastrabombycia</i>	<i>solidaginis</i>
	Lepidoptera	Cosmopterigidae	<i>Cosmopterix</i>	<i>nitens</i>
	Lepidoptera	Crambidae		
	Lepidoptera	Gracillariidae	<i>Phyllonorycter</i>	
	Lepidoptera	Geometridae		
	Lepidoptera	Geometridae	[Xanthorhoini]	
	Lepidoptera	Nepticulidae	<i>Stigmella</i>	<i>purpuratella</i>
	Lepidoptera	Nepticulidae	<i>Glaucolepis</i>	<i>saccharella</i>
	Lepidoptera	Gracillariidae	<i>Cameraria</i>	
	Lepidoptera	Nepticulidae	<i>Stigmella</i>	

	Lepidoptera	Gracillariidae	<i>Parornix</i>	
	Lepidoptera	Tischeriidae	<i>Coptotriche</i>	<i>castaneaeella</i>
	Lepidoptera	Gracillariidae	<i>Parornix</i>	
	Lepidoptera	Nepticulidae	<i>Stigmella</i>	
	Lepidoptera	Depressariidae	<i>Psilocorsis</i>	
	Lepidoptera	Tortricidae	<i>Rhopobota</i>	<i>dietziana</i>
	Lepidoptera	Heliozelidae	<i>Coptodisca</i>	<i>magnella</i>
	Lepidoptera	Gelechiidae	[Gnorimoschemini]	
	Hymenoptera	Tenthredinidae	<i>Fenella</i>	<i>nigrita</i>
	Diptera	Cecidomyiidae	<i>Asteromyia</i>	<i>carbonifera</i>
	Trombidiformes	Eriophyidae	<i>Vasates</i>	<i>aceriscrumena</i>
	Coleoptera	Buprestidae	<i>Brachys</i>	<i>aerosus</i>
	Diptera	Agromyzidae	<i>Phytomyza</i>	<i>agromyzina</i>
	Diptera	Cecidomyiidae	<i>Parallelodiplosis</i>	<i>subtruncata</i>
	Hymenoptera	Tenthredinidae	<i>Macremphytus</i>	<i>testaceus</i>
	Diptera	Agromyzidae	<i>Calycomyza</i>	<i>solidaginis</i>
	Diptera	Agromyzidae	<i>Liriomyza</i>	
	Diptera	Rhagionidae	<i>Rhagio</i>	

	Diptera	Agromyzi dae	<i>Phytoliriomyza</i>	<i>melampyga</i>
	Diptera	Cecidom yiidae	<i>Schizomyia</i>	<i>impatiens</i>
	Diptera	Agromyzi dae	<i>Aulagromyza</i>	<i>luteoscutellata</i>
Bot fly	Diptera	Oestrída e	<i>Cuterebra</i>	<i>fontinella</i>
	Diptera	Agromyzi dae	<i>Phytomyza</i>	<i>ranunculi</i>
	Diptera	Agromyzi dae	<i>Calycomyza</i>	<i>flavinotum</i>
	Diptera	Agromyzi dae	<i>Calycomyza</i>	<i>eupatoriphaga</i>
	Diptera	Agromyzi dae	<i>Agromyza</i>	<i>vockerothi</i>
	Diptera	Agromyzi dae	<i>Liriomyza</i>	<i>galiivora</i>
	Hymenoptera	Tenthred inidae	<i>Metallus</i>	<i>lanceolatus</i>
	Diptera	Anthomy iidae	<i>Chirosia</i>	<i>gleniensis</i>
	Diptera	Cecidom yiidae	<i>Neolasioptera</i>	<i>farinosa</i>
	Diptera	Agromyzi dae	<i>Nemorimyza</i>	<i>posticata</i>
	Diptera	Agromyzi dae	<i>Liriomyza</i>	<i>eupatorii</i>
	Diptera	Agromyzi dae	<i>Liriomyza</i>	<i>eupatoriella</i>
	Diptera	Agromyzi dae	<i>Cerodontha</i>	<i>angulata</i>
	Hymenoptera	Tenthred inidae	<i>Nefusa</i>	<i>ambigua</i>
	Coleoptera	Chrysom elidae	<i>Sumitrosis</i>	<i>inaequalis</i>

	Araneae	Uloboridae	<i>Hyptiotes</i>	<i>cavatus</i>
	Diptera	Agromyzidae	<i>Phytomyza</i>	<i>erigeronia</i>
	Diptera	Agromyzidae	<i>Ophiomyia</i>	<i>maura</i>
	Diptera	Agromyzidae	<i>Agromyza</i>	<i>aristata</i>
	Diptera	Agromyzidae	<i>Phytomyza</i>	
	Diptera	Agromyzidae	<i>Liriomyza</i>	<i>asclepiadis</i>
	Hemiptera	Cicadellidae	<i>Graphocephala</i>	<i>coccinea</i>
	Coleoptera	Cerambycidae	<i>Tetraopes</i>	<i>tetropthalmus</i>
	Orthoptera	Tettigoniidae	<i>Conocephalus</i>	<i>brevipennis</i>
	Diptera	Cecidomyiidae	<i>Rhopalomyia</i>	<i>inquisitor?</i>
	Diptera	Tephritidae	<i>Eurosta</i>	<i>solidaginis</i>
	Hymenoptera	Formicidae	<i>Crematogaster</i>	
	Diptera	Agromyzidae	<i>Phytomyza</i>	<i>loewii</i>
	Diptera	Cecidomyiidae	<i>Rhopalomyia</i>	<i>solidaginis</i>
	Diptera	Cecidomyiidae	<i>Asteromyia</i>	<i>euthamiae</i>
	Diptera	Agromyzidae	<i>Agromyza</i>	<i>idaeiana</i>
	Diptera	Agromyzidae	<i>Phytomyza</i>	<i>plumiseta</i>
	Coleoptera	Erotylidae	<i>Megalodacne</i>	<i>heros</i>

	Hemiptera	Cicadellid ae	<i>Amblysellus</i>	<i>curtisii</i>
	Diptera	Agromyzi dae	<i>Liriomyza</i>	<i>arctii</i>
	Diptera	Cecidom yiidae	<i>Schizomyia</i>	<i>racemicola</i>
	Diptera	Agromyzi dae	<i>Ophiomyia</i>	<i>parda</i>
	Diptera	Agromyzi dae	<i>Liriomyza</i>	
	Diptera	Agromyzi dae	<i>Liriomyza</i>	<i>equiseti</i>
	Diptera	Agromyzi dae	<i>Cerodontha</i>	<i>dorsalis</i>
	Diptera	Agromyzi dae	<i>Ophiomyia</i>	<i>euthamiae</i>
	Diptera	Agromyzi dae	<i>Agromyza</i>	<i>albitarsis</i>
	Diptera	Agromyzi dae	<i>Agromyza</i>	<i>isolata</i>
	Diptera	Agromyzi dae	<i>Ophiomyia</i>	
	Hymenoptera	Tenthred inidae	<i>Profenusa</i>	<i>thomsoni</i>
	Hemiptera	Reduviid ae	<i>Zelus</i>	<i>luridus</i>
	Diptera	Cecidom yiidae	<i>Dasineura</i>	<i>salicifoliae</i>
	Diptera	Cecidom yiidae	<i>Acericecis</i>	<i>ocellaris</i>
	Diptera	Agromyzi dae	<i>Aulagromyza</i>	<i>orbitalis</i>
	Hymenoptera	Cynipida e	<i>Amphibolips</i>	<i>cookii</i>
	Hymenoptera	Cynipida e	<i>Callirhytis</i>	<i>quercuspunctata</i>

	Diptera	Agromyzi dae	<i>Liriomyza</i>	<i>limopsis</i>
	Hymenoptera	Tenthred inidae	<i>Metallus</i>	<i>capitalis</i>
	Hemiptera	Aphidida e	<i>Hamamelistes</i>	<i>spinosus</i>
	Hymenoptera	Tenthred inidae	<i>Metallus</i>	<i>rohweri</i>
	Diptera	Agromyzi dae	<i>Agromyza</i>	
	Coleoptera	Tetragna thidae	<i>Tetragnatha</i>	
	Coleoptera	Buprestid ae	<i>Brachys</i>	<i>howdeni</i>
	Diptera	Agromyzi dae	<i>Cerodontha</i>	<i>incisa</i>
	Diptera	Agromyzi dae	<i>Phytomyza</i>	
	Hemiptera	Adelgida e	<i>Pineus</i>	<i>similis</i>
	Hymenoptera	Vespidae	<i>Dolichovespula</i>	<i>maculata</i>
Ebony Jewelwing	Odonota		<i>Calopteryx maculata</i>	
Yellow-legged meadowhawk	Odonota		<i>Sympetrum vicinum</i>	
Common green darner	Odonota		<i>Anax junius</i>	
eastern pondhawk	Odonota		<i>Erythemis simplicicollis</i>	
twelve-spotted skimmer	Odonota		<i>Libellula pulchella</i>	
widow skimmer	Odonota		<i>Libellula luctuosa</i>	
common whitetail	Odonota		<i>Libellula lydia</i>	
slaty skimmer	Odonota		<i>Libellula incesta</i>	
	Arachnidae		<i>Argiope trifaciata</i>	
			<i>Pisaurina mira</i>	
			<i>Phidippus clarus</i>	

			Hyposolistes florense	
			Naphrys pulex	
			Rialena triangularus	
			Leiobumum vittum	
			Hyptiotes cavatus	
			Leucauge venusta	
			Dictyna foliacea	
			Araneus quadratus	
			Frontenella communis	
			Pityohyphantes costatus	
			Cyclosa conica	
			Xysticus elegans	
			Neriere clathrata	
			Mimetus puritanus	
			Anyphaena pectorosa	
			Tetragnatha laboriosa	
			Araneus trifolium	
			Neoscona domiciliorum	
			Synemosyna formica	
			Eris militaris	
			Mecaphesa celer	
			Marpissa pikei	
			Paraphidippus aurantius	
			Salticus scenicus	
			Clubiona p. riparia	
			Coras montenus	
			Agelenopsis pennsylvanica	



			Pelegrina proterva	
			Phidippus princeps	
			Araneus nordmanni	
			Prostigmatid	
			Orbatida	
			Leiobunum rotundum	
	Arachnida	Trombidi formes	Eriophyidae	<i>Vasates</i>
	Arachnida	Araneae	Uloboridae	<i>Hyptiotes</i>
	Arachnida	Trombidi formes	Eriophyidae	<i>Aceria</i>
	Arachnida	Araneae	Philodromidae	<i>Philodromus</i>
	Arachnida	Araneae	Tetragnathidae	<i>Tetragnatha</i>
<b>BIRDS</b>	<b>42</b>			
American Crow				
American Goldfinch				
American kestrel				
American redstart				
American robin				
American robin				
Barred Owl				
black and white warbler				
Black-capped Chickadee				
Broad-Winged Hawk				
black-throated green warbler				
blackpoll warbler				
Blue Jay				
blue-headed vireo				
Brown Creeper				
Cedar Waxwing				
chestnut-sided warbler				
common raven				
Common Yellowthroat				

Connecticut warbler				
Coopers hawk				
Downy Woodpecker (Eastern)				
Eastern Phoebe				
Gray Catbird				
Hairy Woodpecker				
magnolia warbler				
mourning dove				
northern cardinal				
Northern Flicker (Yellow-shafted)				
Northern parula				
Philadelphia vireo				
Philadelphia vireo				
Pileated Woodpecker				
purple finch				
Red-bellied Woodpecker				
Red-eyed vireo				
Red-Tailed Hawk				
rose-breasted grosbeak				
scarlet tanager				
Sharp-shinned Hawk				
song sparrow				
Tufted Titmouse				
Turkey Vulture				
white-breasted nuthatch				
White-Throated Sparrow				
yellow-bellied sapsucker				
Yellow-throated Vireo				
<b>REPTILES &amp; AMPHIBIANS</b>	<b>12</b>			
American Toad				
Spring Peeper				
Garter snake				

green frog				
Pickerel Frog				
Decay's Brown Snake				
Red-spotted newt (eft)				
Dusky Salamander				
Spring Salamander				
Unknown Salamander				
American Bullfrog				
Milk Snake				
<b>PLANTS &amp; HERBS</b>	<b>178</b>			
			Imaptiens capensis	
			Agerafina altissima	
			Erigeron annuus	
			Euribya divoricata	
			Asteraceae arctium minus	
			Anacardiaceae Toxicodendron radicans	
			Asteraceae Ageratina altissima	
			Celastraceae Celastrus orbiculatus	
			Cyperaceae Carex swanii	
			Dryopteridaceae Cystopteris bulbifera	
			Dryopteridaceae Polystichum acrostichoides	
			Onocleaceae Onoclea sensibilis	
			Vitaceae Parthenocissus quinquefolia	
			Vitaceae Vitis species	

			Polygonaceae Persicaria virginianum	
			Poaceae Poa hemoralis (?)	
			Dryopteridaceae Dryopteris intermedia	
			Cyperaceae Carex rocea	
			Cyperaceae Carex byflora (?)	
			Dryopteridaceae Dryopteris intermedia	
			Cyperaceae Carex rocea	
			Cyperaceae Carex byflora (?)	
ash-leaved maple		Sapindac eae	<i>Acer negundo</i> L. var. <i>violaceum</i> (Kirchn.) Jaeger	
striped maple		Sapindac eae	<i>Acer pensylvanicum</i> L.	
Norway maple		Sapindac eae	<i>Acer platanoides</i> L.	
red maple		Sapindac eae	<i>Acer rubrum</i> L.	
silver maple		Sapindac eae	<i>Acer saccharinum</i> L.	
sugar maple		Sapindac eae	<i>Acer saccharum</i> Marsh. var. <i>saccharum</i>	
speckled alder		Betulace ae	<i>Alnus incana</i> (L.) Moench ssp. <i>rugosa</i> (Du Roi) Clausen	
common ragweed		Asterace ae	<i>Ambrosia</i> <i>artemisiifolia</i> L.	
flowering big-bracted-dogwood		Cornacea e	<i>Benthamidia florida</i> (L.) Spach	

yellow birch		Betulaceae	<i>Betula alleghaniensis</i> Britt.	
cherry birch		Betulaceae	<i>Betula lenta</i> L.	
paper birch		Betulaceae	<i>Betula papyrifera</i> Marsh.	
gray birch		Betulaceae	<i>Betula populifolia</i> Marsh.	
American hornbeam		Betulaceae	<i>Carpinus caroliniana</i> Walt. ssp. <i>virginiana</i> (Marsh.) Furlow	
bitternut hickory		Juglandaceae	<i>Carya cordiformis</i> (Wangenh.) K. Koch	
pignut hickory		Juglandaceae	<i>Carya glabra</i> (P. Mill.) Sweet	
shagbark hickory		Juglandaceae	<i>Carya ovata</i> (P. Mill.) K. Koch	
American chestnut		Fagaceae	<i>Castanea dentata</i> (Marsh.) Borkh.	
American hazelnut		Betulaceae	<i>Corylus americana</i> Walt.	
northern ground-cedar		Lycopodiaceae	<i>Diphasiastrum</i> <i>complanatum</i> (L.) Holub	
blue ground-cedar		Lycopodiaceae	<i>Diphasiastrum</i> <i>tristachyum</i> (Pursh) Holub	
winged spindle-tree		Celastraceae	<i>Euonymus alatus</i> (Thunb.) Sieb.	
American beech		Fagaceae	<i>Fagus grandifolia</i> Ehrh.	
glossy false buckthorn		Rhamnaceae	<i>Frangula alnus</i> P. Mill.	
white ash		Oleaceae	<i>Fraxinus americana</i> L.	

black ash		Oleaceae	<i>Fraxinus nigra</i> Marsh.	
green ash		Oleaceae	<i>Fraxinus pennsylvanica</i> Marsh.	
black huckleberry		Ericaceae	<i>Gaylussacia baccata</i> (Wangenh.) K. Koch	
American witch-hazel		Hamamelidaceae	<i>Hamamelis virginiana</i> L.	
mountain holly		Aquifoliaceae	<i>Ilex mucronata</i> (L.) M. Powell, Savol., & S. Andrews	
white walnut		Juglandaceae	<i>Juglans cinerea</i> L.	
black walnut		Juglandaceae	<i>Juglans nigra</i> L.	
eastern red cedar		Cupressaceae	<i>Juniperus virginiana</i> L. var. <i>virginiana</i>	
American larch		Pinaceae	<i>Larix laricina</i> (Du Roi) K. Koch	
northern spicebush		Lauraceae	<i>Lindera benzoin</i> (L.) Blume	
tuliptree		Magnoliaceae	<i>Liriodendron tulipifera</i> L.	
maleberry		Ericaceae	<i>Lyonia ligustrina</i> (L.) DC. var. <i>ligustrina</i>	
cultivated apple		Rosaceae	<i>Malus pumila</i> P. Mill.	
hop-hornbeam		Betulaceae	<i>Ostrya virginiana</i> (P. Mill.) K. Koch	
Virginia-creeper		Vitaceae	<i>Parthenocissus quinquefolia</i> (L.) Planch.	
Norway spruce		Pinaceae	<i>Picea abies</i> (L.) Karst.	
white spruce		Pinaceae	<i>Picea glauca</i> (Moench) Voss	

red spruce		Pinaceae	<i>Picea rubens</i> Sarg.	
red pine		Pinaceae	<i>Pinus resinosa</i> Ait.	
eastern white pine		Pinaceae	<i>Pinus strobus</i> L.	
American sycamore		Platanaceae	<i>Platanus occidentalis</i> L.	
balsam poplar		Salicaceae	<i>Populus balsamifera</i> L. ssp. <i>balsamifera</i>	
necklace poplar		Salicaceae	<i>Populus deltoides</i> Bartr. ex Marsh. var. <i>deltoides</i>	
big-toothed poplar		Salicaceae	<i>Populus grandidentata</i> Michx.	
quaking poplar		Salicaceae	<i>Populus tremuloides</i> Michx.	
pin cherry		Rosaceae	<i>Prunus pensylvanica</i> L. f. var. <i>pensylvanica</i>	
black cherry		Rosaceae	<i>Prunus serotina</i> Ehrh. var. <i>serotina</i>	
choke cherry		Rosaceae	<i>Prunus virginiana</i> L. var. <i>virginiana</i>	
eastern white oak		Fagaceae	<i>Quercus alba</i> L.	
northern red oak		Fagaceae	<i>Quercus rubra</i> L.	
black oak		Fagaceae	<i>Quercus velutina</i> Lam.	
European buckthorn		Rhamnaceae	<i>Rhamnus cathartica</i> L.	
early azalea		Ericaceae	<i>Rhododendron prinophyllum</i> (Small) Millais	
smooth sumac		Anacardiaceae	<i>Rhus glabra</i> L.	
staghorn sumac		Anacardiaceae	<i>Rhus typhina</i> (L.)	

eastern prickly gooseberry		Grossulariaceae	<i>Ribes cynosbati</i> L.	
hairy-stemmed gooseberry		Grossulariaceae	<i>Ribes hirtellum</i> Michx.	
black locust		Fabaceae	<i>Robinia pseudoacacia</i> L.	
rambler rose		Rosaceae	<i>Rosa multiflora</i> Thunb. ex Murr.	
common blackberry		Rosaceae	<i>Rubus allegheniensis</i> Porter	
northern blackberry		Rosaceae	<i>Rubus flagellaris</i> Willd.	
bristly blackberry		Rosaceae	<i>Rubus hispidus</i> L.	
red raspberry		Rosaceae	<i>Rubus idaeus</i> L. ssp. <i>strigosus</i> (Michx.) Focke	
black raspberry		Rosaceae	<i>Rubus occidentalis</i> L.	
flowering raspberry		Rosaceae	<i>Rubus odoratus</i> L.	
dwarf raspberry		Rosaceae	<i>Rubus pubescens</i> Raf.	
long-beaked willow		Salicaceae	<i>Salix bebbiana</i> Sarg.	
pussy willow		Salicaceae	<i>Salix discolor</i> Muhl.	
heart-leaved willow		Salicaceae	<i>Salix eriocephala</i> Michx. ssp. <i>eriocephala</i> var. <i>eriocephala</i>	
red elderberry		Adoxaceae	<i>Sambucus racemosa</i> L.	
			<i>Amblystegium varium</i>	
			<i>Anacamptodon splachnoides</i>	
			<i>Anomodon attenuatus</i>	
			<i>Anomodon rostratus</i>	



			Anomodon viticulosus	
			Atrichum angustatum	
			Atrichum crispulum	
			Bazzania trilobata	
			Brachythecium campestre	
			Brachythecium laetum	
			Brachythecium plumosum	
			Brachythecium reflexum	
			Brachythecium rivulare	
			Bryhnia graminicolor	
			Bryhnia novae-angliae	
			Bryoandersonia illecebra	
			Callicladium haldanianum	
			Calliergon cordifolium	
			Calypogeja sp.	
			Campylium chrysophyllum	
			Cephalozia sp	
			Cephaloziella sp	
			Climacium dendroides	
			Conocephalum conicum	
			Dicranella heteromalla	
			Dicranum flagellare	
			Dicranum fulvum	
			Dicranum montanum	
			Dicranum scoparium	

			Dicranum viride	
			Diphyscium foliosum	
			Entodon cladorrhizans	
			Entodon seductrix	
			Eurhynchium pulchellum	
			Fissidens adianthoides	
			Fissidens bryoides	
			Fissidens dubius	
			Fissidens taxifolius	
			Frullania eboracensis	
			Gymnostomum aeruginosum	
			Hedwigia ciliata	
			Herzogiella striatella	
			Homalia trichomannoides	
			Hygroamblystegium tenax	
			Hypnum imponens	
			Hypnum lindbergii	
			Hypnum pallescens	
			Leskea gracillescens	
			Leucobryum glaucum	
			Lophocolea heterophylla	
			Mnium thomsonii	
			Nowellia curvifolia	
			Orthotrichum pumilum	
			Orthotrichum sordidum	
			Plagiochila porelloides	

			Plagiomnium ciliare	
			Plagiomnium cuspidatum	
			Plagiothecium cavifolium	
			Platydictya confervoides	
			Platygyrium repens	
			Pleurozium schreberi	
			Pohlia nutans	
			Polytrichum commune	
			Polytrichum ohioense	
			Porella platyphylla	
			Ptilidium pulcherrimum	
			Racomitrium aciculare	
			Radula complanata	
			Raiiella scita	
			Rhizomnium punctatum	
			Rhodobryum ontariense	
			Scapania nemorea	
			Taxiphyllum deplanatum	
			Tetraphis pellucida	
			Thuidium delicatulum	
			Torrentaria riparioides	
			Ulota crispa	
			Ulota hutchinsiae	
Beechdrops			Epifagus virginiana	
White Turtlehead			Chelone glabra	
Pale Jewelweed			Impatiens palida	
American Pokeweed			Phytolacca americana	

<b>MAMMALS</b>		<b>8</b>		
Red Squirrel			<i>Tamiasciurus</i>	<i>hudsonicus</i>
Chipmunk			<i>Tamias</i>	<i>striatus</i>
Grey Squirrel				
shrew			Talpidae	
white footed mouse				
meadow vole				
Deer Mouse				
Deer			<i>Odocoileus</i>	<i>virginianus</i>
<b>NEMOTODE</b>		<b>1</b>		
	Tylenchida	Aphelenc hoididae	<i>Aphelenchoides</i>	<i>fragariae</i>
<b>MOLLOSKS</b>		<b>2</b>		
amber snail				
olive snail				
<b>FISHES</b>		<b>5</b>		
Black Nose Dace				
Brook Trout				
Brook Trout				
Brook Trout				
Slimy Sculpin				
	<b>total</b>	<b>481</b>		