

# Xeriscaping

The Complete How-To Guide

## Inside:

- **Planning and planting tips**
- **Best trees and shrubs for your area**
- **Regional plant list**
- **Rebate information for Water Authority customers**

Visit Our New Landscaping Website:

**505** *Outside*  
YOUR RESOURCE FOR BEAUTIFUL DESERT FRIENDLY LANDSCAPES



|                                       |       |
|---------------------------------------|-------|
| XERISCAPING BASICS .....              | 1-7   |
| Tips on Drip .....                    | 5     |
| 8 Steps to a Healthy Xeric Plant .... | 6-7   |
| RAINWATER HARVESTING .....            | 8-9   |
| TREES .....                           | 10-14 |
| VINES .....                           | 14-15 |
| SHRUBS .....                          | 16-19 |
| FLOWERING PLANTS .....                | 20-27 |
| DESERT ACCENTS .....                  | 28-31 |
| GROUNDCOVER .....                     | 32-34 |
| GRASSES .....                         | 35-37 |
| PLANT LISTINGS .....                  | 38-55 |

# Introduction

**The Complete How-To Guide to Xeriscaping** is published by the Albuquerque Bernalillo County Water Utility Authority to help people make smart, water-efficient landscape decisions that are appropriate for our arid climate.

A list of plants that grow well in the region is provided at the back of this guide. This list provides basic information about each plant, and the plant's rebate allowance, where applicable. Photos and more detailed descriptions of featured plants from the list are provided in the front and middle portion of the book, along with tips on layout and design, planting, soil preparation, mulching, drip irrigation and more.

If you are a customer of the Water Authority, you may qualify for one or more of our outdoor rebates. Please visit our landscaping website, [www.505outside.com](http://www.505outside.com), for more information and instructions on how to apply.



# Why Xeriscape?

## *It's Beautiful and Saves Water and Money*

A xeriscape is a landscape designed for arid climates that uses water-conserving elements, such as drought-tolerant plants, mulch, and efficient irrigation. The term is derived from the Greek word xeros, meaning dry, and should not be confused with the misnomer “zero-scape.” A well-designed xeriscape is anything but a zero – it can be a shady refuge filled with many colors, scents and textures. A xeriscape can save water and money, and is easier to maintain because it works with the local ecology. So how does someone go from the turfgrass of less water-savvy times to a sheltered garden for outdoor living or an urban wildlife oasis?

### ***There are a number of things to keep in mind:***

## Have a Plan

Before you move a shovelful of dirt or plant a single flower, have an overall plan for your xeriscape. As that great gardener Yogi Berra once noted, “If you don’t know where you’re going, you might end up someplace else.” Look at your site from a perspective of what it has to offer and what you want it to provide.

- Areas already shaded by the walls of the building or existing trees might become additional patio space to take advantage of existing cool spots, or you may want to plant trees or vines to shade existing patios where summer sun makes them less usable because of the heat.
- Do you need a small lawn as a play space for young children, or is your water budget better invested in vegetable or flower gardening?
- Rainwater from the roof and large paved surfaces can be collected and/or diverted for plants to use. This important source of “free” water may also help determine the placement of large shade trees.
- Plant large shrubs with views, privacy screening and wind protection in mind.



- Consider the mature size of plants when you include them in your garden. Well-adapted plants will reach their maximum size fairly quickly. Over-planting wastes water and money.
- If you have limited time or energy to invest in gardening, the places where you spend the most time or that you can see through your windows may be the focal points for color and accent, while the rest of the landscape is planned for very low maintenance.

Whether you’re an avid do-it-yourselfer who designs and plants your own garden or you use the services of a landscape design professional, the most important things to consider are how you want to use the space and how you want the space to look and feel. By considering these two key items, you are more likely to develop a well-designed xeriscape that meets your needs and provides beautiful, water-wise outdoor living space for you and your family.



## Digging the Dirt

If you're planting a lawn, a vegetable garden or fruit trees, you may need to add compost to your soil before you plant so that the soil absorbs and holds water more efficiently. If you're landscaping with native and xeric plants, you probably don't need to add any compost to the soil as these plants prefer our native soils. For arid-adapted plants, usually all you'll need to do is loosen the soil well before you plant, and water deeply enough to encourage them to root extensively.



## Rethinking Our Lawns

New Mexico is the land of enchantment. The bluegrass state is Kentucky. People love our sunny skies and low humidity; bluegrass does not. How much thirsty lawn is appropriate here? Kentucky

bluegrass is a cool season grass that requires a minimum of 40 inches of rainfall a year to stay lush and green. The Albuquerque area receives 8-12" of precipitation annually. That's why we have to water bluegrass so much here in the high desert.

If we're going to be serious about saving water, we have to rethink our lawns. The greatest value of cool season turf is its resilience as a play surface. Communities maintain public parks and playing fields with taxpayer dollars, and these cool amenities serve the citizens well. Homeowners generally don't need a soccer field of turf in their backyards, and no one needs a huge expanse of water-guzzling turf in their front yard where its main use is outdoor carpeting. There are hundreds of plants recommended for their medium- and low-water use in this guide including native grasses that can create a lush-looking green cover or gorgeous tapestry of color with less water than it takes to maintain a lawn.



## Desert Friendly Plants

Choose native and desert friendly plants whenever possible. From the low desert of southern New Mexico to the foothills of the northern mountains, there is an amazing diversity of water-wise plants that we can use in our gardens. Whether you want to have year-round green, blazing flowers or a subtle blend of texture and color that changes through the seasons, there are well-adapted plants that can fill the space on a modest water budget. Grouping plants of like requirements also makes zoning irrigation easier and more efficient.

## Water Smart

Efficient irrigation saves water. When plants are grouped by their water needs, plants that need water more often in summer, such as vegetable gardens, fruit trees or turf, can be accommodated while desert natives with the lowest water needs can be watered less often or not at all once they are well-rooted.

- Choose sprinkler nozzles that deliver water efficiently and make sure there is not excessive pressure in the system that causes misting. Sprinkler heads should have a low spray angle and be operated at the coolest, least windy times of day to minimize evaporative loss.
- Most other plants should be watered with bubblers or drip irrigation, applying water only where plant roots can access it, and only as often and as deeply as the plants require. Such careful application of water has the added advantage of minimizing weeds and preventing pest problems.
- Plants use the least amount of water when they are dormant during the coldest winter months and the most water when they are actively growing, blooming and producing fruit in summer. In spring, as temperatures rise, and in autumn, as temperatures fall, watering times should be adjusted to keep plants healthy without waste.



Plants pushed with extra water in spring may leaf out or flower earlier, making them more vulnerable to late spring frosts. Likewise, watering too much in autumn can keep plants soft going into cold weather and make them more vulnerable to frost damage.

- An automatic irrigation controller is only as efficient as the program that runs it – and the programmer who sets the run times – so program only to deliver as much water as the landscape needs.



- Remember, too, that even the best-designed irrigation system must be maintained to retain its optimum efficiency. Fix leaks and make sure water lines are clean and unobstructed for peak performance.



## Mulching

Mulches are blankets of loose material that cover the soil to minimize evaporation, keep roots cool in summer, suppress weed growth and slow erosion. Mulches can also provide visual interest and make the landscape more cohesive until young plants mature to fill the space.

- Organic mulches such as pecan shells and wood chips improve soil fertility and water holding capacity by adding organic material into the soil. Landscape fabric deprives the soil of these benefits by blocking the soil-mulch interface.
- Stone mulches such as crusher fines and gravel of various sizes and colors, can be used as pathways, lining rain-water catchment, streambeds and basins, and to add texture to planting areas where desert plants prefer improved drainage.
- Never use impervious plastic sheeting under mulches as it blocks air movement needed for healthy root growth. If a barrier between mulch and soil is required, select a landscape fabric made of pervious material.

## “Low Maintenance” is Not “No Maintenance”

Xeriscapes can be designed to require very little maintenance, to be healthy and attractive with seasonal cleanup and pruning rather than weekly mowing, but no garden is completely maintenance-free. To ensure that your landscape looks its best and stays water-wise, you may need to:

- Remove fallen leaves,
- Trim off old flower stems,
- Pull a few weeds,
- Observe insect activity and decide when intervention is warranted and what the least invasive and most effective approach might be,
- Monitor watering and
- Fertilize plants that need supplementing.



While this may seem like a long list of tasks, in real time most of these may amount to a few hours every two or three months. The preventive pest patrol and irrigation check can be done in the evening every week or two with a cool drink in your hand – a relaxing reminder to stop and smell the roses.

# Tips on Drip: The Basics of Drip Irrigation

1



**Filter** keeps sand and silt from clogging small drip lines and is part of a valve assembly. Filters are also available for hose bib attachments.

2



**Pressure Regulator** lowers the water pressure to the ideal setting for a drip system – approximately 20-30 pounds per square inch (PSI).

3



**Distribution Tubing** is typically ¾" or ½" polyethylene tubing, also known as poly pipe, shallowly buried in the soil or simply covered with mulch.

4



**¼" Barbed Fittings** are used to connect **Microtubing**, also known as spaghetti, to the main distribution line.

5



**Drip Emitters** connect to microtubing and deliver water to specific plants at a slow, consistent rate. They come in a variety of styles and rates of flow, measured in gallons per hour (GPH).

6



**In-Line Drip Tubing**, also known as dripline, has integrated pressure-compensating emitters at regular intervals of 12" or 18", providing a standard rate of flow.

7



**Flush Caps** are installed at the end of each lateral line and allow particles and debris to be flushed from the system.

Drip irrigation systems can play an important water-saving role in the xeric landscape. When properly designed, installed and maintained, drip irrigation efficiently maintains the optimal range of moisture in the soil because it applies water in precise quantities on a set schedule. Other drip irrigation advantages include:

- Easy installation and modification
- Relatively low cost
- Reduced weed growth
- Minimal runoff

A drip system is easy for most home owners to install. A point of connection can be made to a hose bib or, for a more permanent installation, the water mainline. On mainline connections a **shut-off valve** is necessary for winterization and maintenance access. In all cases a **backflow prevention device** is required to prevent contaminated water from siphoning back into the drinking water supply. More basic drip irrigation system components are described to the left.

Adding a **Smart Controller** to a drip system enhances water savings. Smart Controllers use local weather and landscape conditions to tailor watering schedules to actual conditions on the site. The Water Authority offers a rebate for EPA WaterSense Smart Controllers. Visit [www.505Outside](http://www.505Outside) for details.



Follow these basic principles for drip success:

- Understand hydrozoning. Group plants with similar watering needs on the same line.
- Make sure enough water gets to the end of the line – factor in pipe diameter, elevation changes, and number of emitters.
- Lay out microtubing and emitters to encourage regular inspections, and to make adjustments as plants mature.

The Water Authority and many local nurseries offer free classes nearly every spring and summer to help do-it-yourselfers get started. Local irrigation supply stores also provide a wealth of resources and high-quality components. If you choose to hire a professional landscaper visit [www.abcwua.org](http://www.abcwua.org) for information about contractors who have participated in Water Authority landscape irrigation efficiency training. These contractors are trained to follow landscape best management practices and to promote efficient watering.

# 8 Steps



1

## SELECT THE RIGHT PLANT FOR THE RIGHT SPOT

Sun-loving plants should go into sunny spaces. Shade-loving plants should be placed under trees or beside walls where they'll be protected from our harsh New Mexico sun. Also make sure the area is big enough to accommodate the plant when it's reached its full mature size. *(Remember, too, to place plants with similar water needs together.)*



2

## DIG THE RIGHT SIZE HOLE AND LOOSEN THE SOIL

The "right size" for trees and shrubs is about three times wider and just a few inches deeper than the depth of the root ball. For annuals and perennials, the soil should also be loosened up three to five times the diameter of the container you're planting from. If you dig a hole that's just big enough for the plant's root ball, you greatly limit how far the roots can easily grow and spread.



5

## GIVE THE PLANT A GOOD SOAKING

Even water-thrifty xeric plants need a healthy drenching when transplanted. Make sure you soak the plant's entire root zone. *(Keep in mind, too, that your new plants will need more frequent waterings during their first year than during subsequent years.)*



6

## MULCH IT!

A thick layer of mulch (2-4" deep depending on the size of the plant) will minimize evaporation, cool the soil and reduce weed growth. Crushed 3/8" or 3/4" gravel, pecan shells, coarse textured compost and bark are four commonly used mulches.



# to a Healthy Xeric Plant

3



## CAREFULLY REMOVE PLANT FROM CONTAINER AND SEPARATE MATTED ROOTS

Turn small plants upside down, supporting the soil with your hands. Tap the pot to loosen the soil from the sides of the pot, then lift the pot off the root ball. Pulling annuals and perennials out by the stems and leaves can damage the plant.

Use a knife or sharp trowel to cut four vertical slits, one on each side of the root ball. Make several similar cuts on bottom of root ball. Use your fingers to “rough out” matted roots on sides and bottom.

4



## PLACE PLANT AND BACKFILL THE HOLE

Place the plant in the hole, making sure that the top of the root ball is about level with the surrounding soil. Shovel the soil around the plant's roots to fill the hole and tamp gently to remove any large air pockets.

When plants will be watered by hand or will be supplemented with rainwater, they should be planted in broad, shallow basins (at least 4" deep and as wide as possible) to hold water so it soaks in deeply.

7



## USE EFFICIENT IRRIGATION

The majority of xeric plants suitable for New Mexico landscapes can be most efficiently watered using drip irrigation. Drip emitters save water because they deliver a slow, steady dose of water directly to a plant's root zone, significantly reducing water lost to evaporation.

8



## MAINTAIN YOUR XERISCAPE

Even a low-maintenance xeriscape requires some maintenance. Periodically check your irrigation system for leaks or clogs. Clean filter and check drip emitters to prevent plugging. For trees and large shrubs, you may need to move emitters outward and add extra emitters as plants grow so the water soaks the entire root zone.

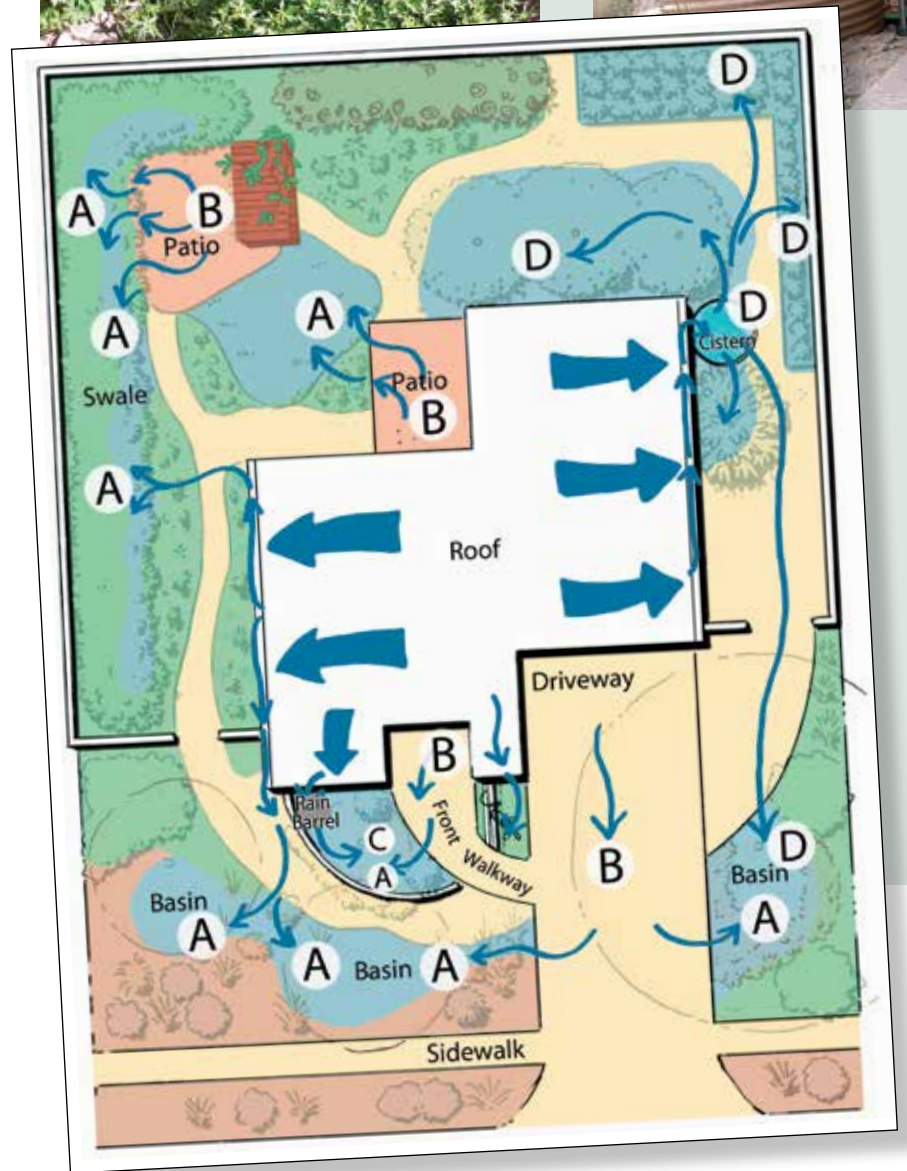
# Making a plan for rainwater harvesting

Rainwater is a gift. Desert-adapted landscapes should be designed to capture and retain as much rain and snow as possible. A smooth roof surface on a 3,000-square-foot home can shed more than 12,000 gallons of water per year and a system of attractive-when-dry streambeds, large rain barrels or a cistern can distribute it to the plants, the first step toward a truly water-efficient garden.

Contouring the soil so runoff flows away from walls and paving into planting areas is the simplest way to use every drop of rain. A system of shallow streambeds and basins (A) distributes water from downspouts or canales (gutters) and from paved surfaces (B) directly to the plants nearby. The streambeds need to be lined with stone heavy enough to stay in place when flooded. The plants noted as Rainwater Only on the plant list can thrive in or near water catchments without additional irrigation once they are well rooted.

Rain barrels (C) are the next step up in water harvesting, but are only effective if they are large enough to hold most of the output from the drainpipe or canale they serve. A thousand square feet of roof can shed more than 500 gallons of water per inch of rain, so on a 2,400-square-foot home, if there are 8 downspouts of equal output, each rain barrel needs to hold at least 200 gallons of water, and should have an overflow draining into a shallow streambed that carries any excess directly into nearby planting basins.

Cisterns (D) are the most sophisticated level of water harvesting. Again, the capacity of the tank should be large enough to contain the output of the roof surface it serves with an overflow outlet into a shallow streambed to carry any excess directly into nearby planting basins. Because an 1,100-gallon cistern may be 5 feet in diameter and 6 feet tall and, when full, can weigh several tons, cisterns are easier



to design into new construction than they are to retrofit. Capacious cisterns can supply all the water disbursed via drip irrigation that a diverse garden will use throughout the year. Lawns are the only landscape features that require so much water that even a good cistern is not sufficient. To learn more about the mechanics of water harvesting go to [https://www.ose.state.nm.us/WUC/wuc\\_rainwater.php](https://www.ose.state.nm.us/WUC/wuc_rainwater.php).

## Planting sustained by rainwater harvesting

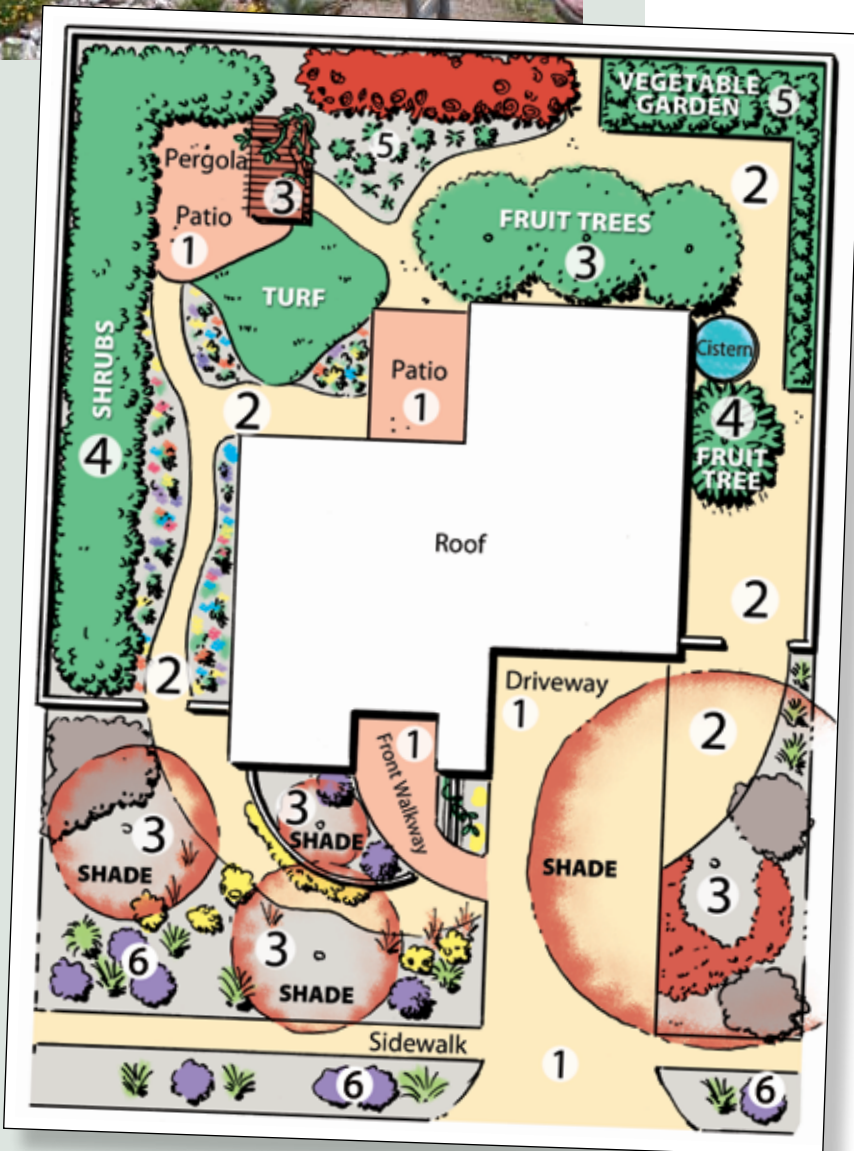
Using precipitation effectively involves keeping as much surface area permeable as possible, and collecting and distributing runoff from the roof and other hard surfaces where it can be absorbed by a network of plant roots. Not only does this prevent storm damage, but the hard surfaces then supply moisture to grow trees and other plants that keep the surrounding spaces cooler in summer.

Because rain in the high desert is feast or famine, often an inch or more at a time and sometimes months between downpours, combining passive collection with active storage that can be metered out during dry periods allows you to grow a much broader selection of plants.

First allocate spaces for the activities you'd like to accommodate. Define the areas that need to be hard-paved such as the driveway, patios and high-traffic walkways (1) and grade them to drain into planting areas. Then define areas such as secondary paths, storage and utility spaces (2) that can be paved with fine crushed gravel or other pervious material. The paved spaces and the spaces planted with the most arid-adapted plants are the driest zones in the garden.

Note the places where trees or vines are needed for shade (3), where large shrubs are needed for screening (4), and where vegetable beds (5) will be: these will be the places you will want to divert the most water consistently via drip irrigation and can also keep the spaces fed by overflow streambeds and basins adjacent to rain barrels or cisterns. The rest of the landscape can be planted with low and medium-water-use plants (6) that may need supplemental water monthly or less once established.

The location of cisterns is a compromise between where there is enough space, where the water is easiest to collect from the roof and where it is most needed in the landscape. Whether building a new home or remodeling an existing one, when cisterns are part of the roof and window plan of the house, it's easier to site them in the best locations.



# LEGEND

## Plant Water Use

Plant water needs are dependent on a number of factors, including season, microclimate, plant type, soil texture, and weather. Additionally, new plantings must be watered more frequently while establishing their root systems. The plant water use legend is provided as a general guide for assessing the relative water demand of plants in the Xeriscape Guide. For more detailed information on how to water, refer to the Watering Recommendations for the Greater Albuquerque Area on our website [www.505Outside.com](http://www.505Outside.com).



### Rainwater Only

*These plants are the most arid-adapted and can survive on rainfall alone, especially if planted in rainwater catchments, once plants are established.*



### Low Water

*Infrequent supplemental watering is needed to keep these plants looking their best, once plants are established.*



### Medium Water

*Consistent watering is needed to maintain optimal plant health.*



### High Water

*Frequent and consistent watering is needed to maintain optimal plant health.*



# LEGEND

## Plant Light Exposure Requirements



### Full Sun

*These plants need strong sunlight to thrive and flower well. They are often the most xeric plants as they are also adapted to the heat and low humidity that accompany intense high desert sun.*



### Full Sun, Part Shade

*These are the most adaptable plants; they will grow and bloom well in either blazing sun or filtered light, but are not suited to deep shade. These plants may take more water when grown in full sun than they do with some shade.*



### Full Shade

*These plants prefer cooler, moister conditions more easily provided in shaded spaces. The leaves of some shade-lovers will burn if the light or heat is too intense; others many endure stronger light but will need much more water to thrive.*

# Trees



Well-adapted and well-placed trees can be an excellent landscape investment. One strategically placed tree can transform a scorching hot section of your yard into a cool oasis, or help reduce air-conditioning costs by shading your home from the sun.

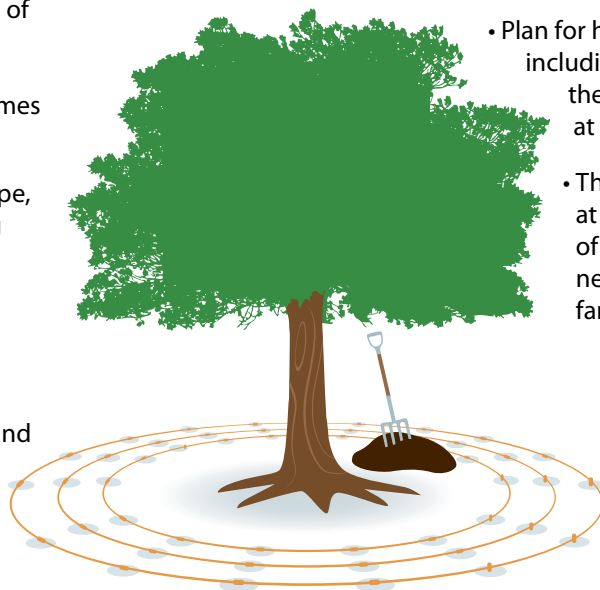
When deciding which trees to plant, consider the typical mature size of the specimens as noted in the following plant list, and make sure you provide enough room for future growth. Don't plant in areas where branches will grow into power lines or block solar panels.

## Planting new trees

- Find the root collar on the tree where the stem flares out into the roots, and prepare the planting hole to the same depth as the roots, so the root flare will be visible when the backfill is added. The root collar should be at the level of surrounding soil.
- The planting hole should be three times wider than the rootball.
- Place the tree in the hole; remove rope, wire, burlap and any other wrapping that could obstruct new roots.
- Backfill with the loosened native soil that was dug out of the planting hole and water thoroughly.
- If staking is necessary due to high wind exposure, be sure to remove after one year. Do not use wire ties as they will cut into tender stems, and avoid rigid staking as trees need to move in the wind.
- All trees grow best with organic mulch. Add a 3- to 4-inch layer of organic mulch over the disturbed soil, keeping mulch a few inches away from the trunk.

## Watering for healthy growth

- For newly planted trees, water should penetrate the soil 6 inches or deeper than the depth of the rootball. As the tree becomes established, gradually water deeper and less frequently to a depth of 24 inches.
- Plan for healthy growth and development by including an emitter wetting pattern as shown in the illustration. Rootball must be kept moist at time of planting.
- The roots that absorb moisture are located at the edge and beyond the branch canopy of a mature tree, so as a tree grows it will need more emitters located farther and farther from the trunk.



*For more detailed information on how to water, refer to the Watering Recommendations for the Greater Albuquerque Area on our website:*

**[www.505Outside.com](http://www.505Outside.com)**

**505Outside**  
YOUR RESOURCE FOR BEAUTIFUL DESERT FRIENDLY LANDSCAPES

**CELTIS RETICULATA**  
**Netleaf Hackberry**

 Full Sun  Low Water

**Mature Size:** 25' X 25'



A young Netleaf Hackberry passes through a rather ungainly adolescence, but with a little pruning, like a butterfly from a chrysalis, it emerges as a sculptural

small shade tree that provides habitat for butterflies and songbirds as well as cooling our patios and decks on a very modest water budget. Deep roots allow its use close to walls and paving without risk.



**CHILOPSIS LINEARIS**  
**Desert Willow**

 Full Sun  Rainwater Only

**Mature Size:** 8-20' X 10-15'

**Blooming Season:** May-July

**Flower Color:** Pale Pink to Rosy Purple

A sturdy, heat-loving tree that's native to warm deserts, especially in arroyos. Grows well in New Mexico's lowlands, but may not be suited to elevations above 5,500 or where its cold hardiness is challenged. Compact and shrubby in appearance, its leaves are long and thin and its profusion of pink trumpet-shaped flowers puts on quite a show. Long, pencil-like pods give the tree year-round character. Fast growing as a young tree, its growth slows as it matures.



**FORESTIERA NEOMEXICANA**  
**New Mexico Olive**

 Full Sun, Part Shade  Medium Water

**Mature Size:** 12-18' X 10-15'

**Blooming Season:** Early Spring

**Flower Color:** Yellow-Green

Depending upon your landscape needs and preferences, this native species can be pruned upward to form an attractive small tree or left in its natural, rounded shrub-like shape. The bark of its multiple trunks is a smooth pale gray, and its branches fork at odd, interesting angles. Clusters of small yellowish-green flowers appear early in spring; female plants produce small fruits that attract songbirds. Tolerates drought, but does best when roots receive a deep soaking once or twice a month.

**KOELREUTERIA PANICULATA**  
**Golden Raintree**

 Full Sun  Medium Water

**Mature Size:** 25' X 25'

**Blooming Season:** Early summer

**Flower Color:** Yellow

The dappled sunlight filtering through the canopy of Golden Raintree is dense enough to substantially cool the air in summer, but bright enough to allow a wide range of ground-covers to share space and water below. Rust-colored paper lantern seed husks add contrast to the yellow gold fall foliage. This is a great tree for shading a driveway or streetside parking.



**PROSOPIS VELUTINA**  
**Velvet Mesquite**

 Full Sun  Rainwater Only

**Mature Size:** 15-30' X 10-25'

**Blooming Season:** May-June

**Flower Color:** Yellow




The various species of mesquite are trees synonymous with the desert Southwest. All are slow to leaf out in the spring, but they make up

for their tardiness with fragrant yellow flowers. Small, blue-green leaflets give Velvet Mesquite a soft, lacy appearance. Flat, narrow bean pods hang from the tree throughout the summer. Its limited cold-hardiness makes it a good choice where average annual minimum temperatures stay above 5 degrees F; other mesquites found in the Plant List are about 5 degrees F more cold hardy.



**QUERCUS SPP.**  
**Oak**

 Full Sun  Medium Water

**Mature Size:** 25-60' X 15-60'

Many species of oak grow well throughout most of New Mexico. Gambel Oak (*Quercus gambelii*) is a moderate-sized tree that's native from Southern Colorado through the canyons and foothills of New Mexico and Arizona. It grows slowly to 30 feet tall, sometimes taller when water is available. Most other oaks grow taller, including Valley Oak (*Quercus lobata*), which can reach 40 feet, and Shumard Oak (*Quercus shumardii*), which can reach 60 feet with a 60-foot spread. Most oaks have lobed leaves that turn from dark green to yellow-orange in the fall.

**PISTACIA CHINENSIS**  
**Chinese Pistache**

 Full Sun  Medium Water

**Mature Size:** 40' X 30'  
**Blooming Season:** Mid- to Late-Spring  
**Flower Color:** Reddish



A wonderful shade tree when mature, the Chinese Pistache can handle hot, dry desert conditions because it roots deeply. Its glossy dark leaves put

on a delightful fall show turning bright gold, orange or crimson. (Wait to select your tree in autumn if red foliage is important.) The pea-sized red fruit of female trees add color in fall. Young trees may have a slightly awkward form when young, but the canopy fills out gracefully as trees mature. Tolerant of virtually all soil conditions except soggy clay.



**ULMUS PARVIFLORA**  
**Lacebark Elm**

 Full sun  Medium water

**Mature Size:** 40' X 40'

So called because of the patchy mosaic bark on their trunks as they mature, Lacebark Elms are moderate in size and growth rate with a majestic form that offers plenty of cool shade. With elm beetle-resistant leaves and no tendency to form a forest of weedy seedlings, this elm is a long-lived asset best planted in broad, shallow basins that capture rainwater.



**VITEX AGNUS-CASTUS**  
**Vitex or Chaste Tree**

 Full Sun  Medium Water

**Mature Size:** 15-25' X 10-15'  
**Blooming Season:** July-August  
**Flower Color:** Blue-Lavender

Multibranched, spreading, large shrub or small tree that features distinctive dark green palmate leaves. Its low, open form can be pruned to grow more treelike to create a small and lovely shade tree. In mid-summer a profusion of 7-inch-long blue flower spikes creates a sweet aroma that attracts bumblebees. Does best in hot areas.

EVERGREEN TREES



**JUNIPERUS**  
**(FEMALE CULTIVARS ONLY)**  
**Female Juniper Trees**

 Full sun  Medium water

**Mature Size:** 25-60' X 10-40' depending on variety  
**Blooming Season:** Spring  
**Fruit:** All female varieties have blue- or copper-colored berries

Although some may argue that there are already enough Junipers in New Mexico gardens, it is important to note that these adaptable conifers are the survivors of the transition from water-soaked landscapes to more sustainable ones. We are lucky to have many new xeric options, but the pollenless female forms of Juniper provide food and cover for songbirds as well as interesting foliage color and texture.

**PINUS ARISTATA**  
**Bristlecone Pine**

 Full sun  Medium water

**Mature Size:** 30' X 20'

This is one of the oldest known trees on earth, and its resilience and adaptability might explain how a tree normally found in the high mountains of the West grows so well thousands of feet lower in elevation and many degrees hotter in temperature. Short-needled and slow-growing, the resinous aroma of Bristlecone Pine fits smaller garden spaces with grace and limited water.



**PINUS EDULIS**  
**Pinon Pine**

 Full Sun  Medium Water

**Mature Size:** 30' X 20'  
**Blooming Season:** Early Spring

Pinon Pines are one of New Mexico's most recognizable native trees. Horizontal branches make for a bushy, domed shape when mature. Its needles, which grow in pairs, are short, stiff and dark green. Its spherical cones produce seeds (also known as Pinon Nuts) that are prized by wildlife—and humans as well. Pinons are often used as accent plants, and specimens with gnarled trunks are especially prized. It grows best in foothill elevations, but can stand up to the heat and cold of most New Mexico locations.



**PINUS ELDARICA**  
**Afghan Pine**

 Full Sun  Medium Water

**Mature Size:** 40' X 18"

Pine trees provide visual interest in a landscape and much-needed greenery in the coldest, most barren months. Afghan Pine is one of the best desert pines. It thrives in heat, wind, poor soil — and it is relatively drought tolerant. However, it cannot tolerate temperatures below 0 degrees F. Its evergreen leaves (needles) grow in pairs and reach 5-6 inches long. This relatively fast-growing tree is great for windbreaks and for creating a “visual screen” between properties.



**PINUS PINEA**  
**Stone Pine**

 Full Sun  Medium Water

**Mature Size:** 60' X 50'

This majestic round-crowned conifer is found growing along the Mediterranean coast in hot, dry places subject to salty sea breezes. Ponderosa Pines, native to the mountains of the Southwest, are moving higher upslope as bark beetles cull those too stressed to thrive in increasingly hot environments, but Stone Pines seem perfectly content as the urban temperatures creep to new highs.

**QUERCUS FUSIFORMIS**  
**Escarpment Live Oak**

 Full Sun, Part Shade  Medium Water

**Mature Size:** 25' X 30'

While the deciduous oaks offer seasonal leaf color in addition to their shade, the evergreen oaks provide year-round visual screening and wind protection. There are several Western Live Oaks with similar attributes including Gray Oak and Emory Oak. They grow somewhat larger than Escarpment Live Oak, while Shrub Live Oak stays slightly smaller, so there is a Live Oak just right for a wide range of garden spaces.



**AKEBIA QUINATA**  
**Chocolate Vine**

 Full Sun, Part Shade  Medium Water

**Mature Size:** Climbing X 15'

**Blooming Season:** Summer

**Flower Color:** Red

What's not to love about a plant named for one of the major food groups? Alas, the common name refers to the brownish red flower color rather than the flavor of its tasty (but not even remotely chocolate) purple-brown fruits. This graceful vine with slender stems and finely divided leaves is semi-evergreen in warm microclimates, and an asset where a light shade canopy or tracery of foliage against a north-or-east-facing wall are needed.



# Vines

*The Wisteria shown here (see the plant list on page 55) is one of the largest vines; a single plant is capable of shading a large arbor, and though it takes ample water to establish, once it roots deeply it can be quite drought tolerant.*

When you don't have the time or space needed to grow shade trees but you can't live comfortably outdoors in the blistering sun, building an arbor and planting a vine to provide a cool leafy canopy may be the solution. Many vines grow quickly and become quite large, so don't plant four vines where one will serve better over time. Be sure to build the shade cover large enough to shelter the space needed and high enough, typically 9 feet above the patio floor, so that as the vine drapes there's still plenty of headroom underneath.

Vines wrapped around a trellis against a wall can fit spaces too narrow for shrubs of the same height. Just remember to check the mature sizes so that you don't plant a Great Dane where you needed a Chihuahua.



## CAMPSIS RADICANS Trumpet Vine



Full Sun



Medium Water

**Mature Size:** Climbing X 40'  
**Blooming Season:** Summer  
**Flower Color:** Orange

Trumpet Vine is a hummingbird's delight with brilliantly colored, luscious nectar-rich flowers produced over a long season. From a human point of view the caveat is to provide a strong enough support and enough space for this vigorous rambler. This is one of the Great Danes alluded to in the introduction.

## LONICERA SEMPERVIRENS Coral Honeysuckle



Full Sun, Part Shade



Medium Water

**Mature Size:** Climbing X 8'  
**Blooming Season:** Spring into summer  
**Flower Color:** Coral Orange

If the sweet scent and rampant growth of honeysuckle are too much of a good thing in your opinion, Coral Honeysuckle may be the vine for you. It is unscented and one of the least aggressive members of the family, yet its brilliant flowers provide plenty of nectar for hummingbirds. If you'd like a smaller sized but fragrant vine, try the hybrid *Lonicera x heckrottii*, Goldflame Honeysuckle, which differs in having clusters of scented gold and coral-pink blossoms.

## ROSA BANKSIAE Lady Banks Rose



Full Sun, Part Shade



Low Water

**Mature Size:** Climbing X 40'  
**Blooming Season:** Spring  
**Flower Color:** Pale Yellow or White

Rarely do you find a plant that is fast growing, evergreen and long-lived. Lady Banks Rose is all those things and it produces a beautiful if brief show of flowers in spring using surprisingly little water. This plant grows large and, unlike most roses, blooms on old wood. It produces the best flower show when pruned sparingly, removing a few of the oldest canes every few years.

# Shrubs



Shrubs are a mainstay of xeric gardens. Rooting deeply, they often require less water per square foot of the space they cover than other plants. They shade the soil, and some have colorful flowers, foliage and fruit. Native shrubs also provide layers of cover as well as nectar and seeds that make habitat for birds and butterflies.

Shrubs can become the walls of the garden, creating smaller outdoor rooms within the larger landscape, screening utility areas that you need but would rather not look at most of the time. They provide wind protection and many shrubs have aromatic leaves and scented flowers that perfume the air around them.



**CARYOPTERIS CLANDONENSIS**  
**Blue Mist Spirea**

 Full Sun, Part Shade  Medium Water

**Mature Size:** 2' X 3'  
**Blooming Season:** July-August  
**Flower Color:** Blue-Purple

A very popular, low-care shrub that's perfect for landscape or flower beds. It needs only average garden soil to thrive. Hundreds of purple-blue flower spikes cover the mature plant in late summer. Cut back 1/3 of its previous year's height in spring to encourage heaviest flowering. Butterflies love this shrub!



**CHAMAEBATIARIA MILLEFOLIUM**  
**Fernbush**

 Full Sun  Low Water

**Mature Size:** 4-6' X 5'  
**Blooming Season:** Mid-Summer  
**Flower Color:** White

Fernbush is an unusual native rose that's great used as a single specimen or clustered in groups or rows for visual screening and hedges. The showy flower spikes resemble those of white lilacs and attract butterflies all summer. Its aromatic olive green foliage is soft and fernlike and its upright stems with their peeling bronze bark create a pleasant, rounded silhouette without shearing. This hardy plant loves south- and west-facing exposures and well-drained soil.



**RHUS TRILOBATA**  
**Three-Leaf Sumac**

 Full Sun, Part Shade  Low Water

**Mature Size:** 3-6' X 3-6'  
**Blooming Season:** April  
**Flower Color:** Yellowish-Green

An ornamental native shrub that is well adapted to a wide range of soils from sandy to rock to heavy clay. Three-Leaf Sumac is a moderate to fast grower, depending on how much water it receives. The unremarkable tiny flowers are followed by tart, red berries that are much sought after by wild birds. A good choice for screening and wind breaks, its leaves turn glorious shades of red and orange in the fall.



**CAESALPINIA GILLIESII**  
**Yellow Bird of Paradise**

 Full Sun  Rainwater Only

**Mature Size:** 10' X 10'  
**Blooming Season:** Summer  
**Flower Color:** Yellow with Thread-like Red Stamens

Yellow Bird of Paradise is a favorite of hummingbirds and provides months of color with a miserly amount of water. Plant it where it receives extra runoff from a canale or gutter downspout, and within a few growing seasons, you can put away the hose and enjoy the show.



**SALVIA GREGGII**  
**Autumn Sage**

 Full Sun, Part Shade  Low Water

**Mature Size:** 24" X 36"  
**Blooming Season:** May-September  
**Flower Color:** Red

Autumn Sage (sometimes called Cherry Sage for its cherry-red blossoms) is a valued xeric plant for its twiggly mounded form and its profusion of flowers that begin in early summer. Culturally undemanding, Autumn Sage tolerates a wide range of soils — as long as they are quick draining. Just a bit of extra water during dry spells encourages more flowers.



**FENDLERA RUPICOLA**  
**Cliff Fendlerbush**


 Full Sun, Part Shade  Low Water

**Mature Size:** 6' X 4'  
**Blooming Season:** Spring  
**Flower Color:** White

Cliff Fendlerbush grows wild in rock outcrops where it is a pleasantly compact shrub with small pale green leaves. Plant it near a window or patio where you can observe its pink buds as they open to pure white flowers. It is an elegant complement to summer flowering plants. Some plants shout out their presence, but Cliff Fendlerbush whispers that it's finally spring.



**CERCOCARPUS LEDIFOLIUS**  
**Curlleaf Mountain Mahogany**

 Full Sun  Low Water

**Mature Size:** 10' X 6'  
**Blooming Season:** Early Spring  
**Flower Color:** Yellowish

A shrublike tree that's native to dry mountain slopes between 4,000 and 9,000 feet in elevation. Because it is very slow growing, it can make an excellent hedge or small character tree. Small flowers appear briefly in spring, then yield to seeds with 2- to 3-inch-long plumes. The bark is light gray, almost white, and the small leathery leaves are dark green above and fuzzy white below. Water to establish, then the tree can go unirrigated except in the hottest, driest weather.



**FALLUGIA PARADOXA**  
**Apache Plume**

 Full Sun  Low Water

**Mature Size:** 4-5' X 4-5'  
**Blooming Season:** April  
**Flower Color:** White

This is one of the showiest of our native shrubs. In spring it's covered with tiny white, five-petaled flowers that look like miniature white roses. (Apache Plume is in the rose family.) But this shrub really stands out when the pink, silky-plumed seed heads cover the tips of its branches from late summer through fall. Plant it in well-drained soil in any hot, sunny location. Needs virtually no supplemental water once established.



**COTONEASTER BUXIFOLIUS**  
**Grayleaf Cotoneaster**

 Full Sun, Part Shade  Medium Water

**Mature Size:** 2' X 4-6'  
**Blooming Season:** Spring-Summer  
**Flower Color:** Pink

Grayleaf Cotoneaster, like most species of Cotoneaster, is a low-spreading shrub that is sometimes used as an informal groundcover. Can be pruned back to create a more formal hedge shape. The small pink flowers become red berries that persist throughout fall. Its small gray leaves clothe 3- to 6-foot arching stems year-round. Grows well in moderately fertile soil.



**MAHONIA FREMONTII**  
**Blue Algerita**

 Full Sun, Part Shade  Low Water

**Mature Size:** 5' X 7'  
**Blooming Season:** Spring  
**Flower Color:** Yellow

The masses of fragrant yellow flowers that grace this native barberry are enough to earn it a place in the garden, but by midsummer its bright red fruits attract the attention of songbirds for another season of interest. Although the stems aren't thorny, the beautiful but prickly blue holly-like leaves of this Algerita offer feeding birds a safe haven from predators.



**EPHEDRA SPECIES**  
**Joint-Fir**

 Full Sun  Rainwater Only

**Mature Size:** 2-6' X 3-5'  
**Blooming Season:** Spring  
**Flower Color:** Yellow

Joint-Firs are grown for the color of their broomy evergreen stems which, depending upon the species, may be pale blue (Ephedra equisetina), blue-gray (Ephedra nevadensis) or bright green (Ephedra viridis). All add year-round color and interesting texture to gardens and require minimal water once established. Joint-Firs native to the Southwest have brown papery seed-cones while the Asian species have pea-sized red fruits that are quite showy.

**PURSHIA SYN COWANIA**  
**Cliffrose**

 Full Sun  Low Water

**Mature Size:** 8' X 6'  
**Blooming Season:** Summer  
**Flower Color:** Yellow

Cliffrose makes an excellent companion for perennials because its open-branched form casts light shade. Its irregular shape lends a native touch to land-



scapes— which is appropriate since this plant is a New Mexico native. Fragrant flowers cover the branches in early summer, a few of which remain virtually all summer long. Feathery plumes form in mid-summer and persist into winter (consequently, Cliffrose is often mistaken for Apache Plume). It can handle the hottest south- and west-facing garden locations.

## ROSMARINUS OFFICINALIS “ARP” “ARP” Upright Rosemary



Full Sun



Low Water

**Mature Size:** 6' X 6'  
**Blooming Season:** Summer  
**Flower Color:** Light Blue

Known primarily as an evergreen shrub, Rosemary is a bushy plant featuring stiff upright stems and soft blue flowers in summer. Rosemary officinalis “Arp” has proven itself to be a cold-hardy selection, extending its use into New Mexico’s higher elevations.



It’s a great choice for hot walls and corners and other areas that get intense reflected heat. Plant in combination with other heat-loving plants like Zauschneria californica (Hummingbird Plant), Lavandula and Calylophus (Sundrops).

## VAUQUELINIA CALIFORNICA Arizona Rosewood



Full Sun



Low Water

**Mature Size:** 12' X 10'  
**Blooming Season:** Summer  
**Flower Color:** White

Arizona Rosewood is a handsome large shrub at its best in open windy spaces where evergreen wind protection is especially welcome. Extreme exposures seem to increase its density and, unlike most broadleaf evergreens, its foliage stays crisp and attractive through heat and cold. Lacy umbels of small white flowers crown Rosewood in summer, turning a deep cocoa brown and persisting well into winter. This is a useful native rose with no off season.



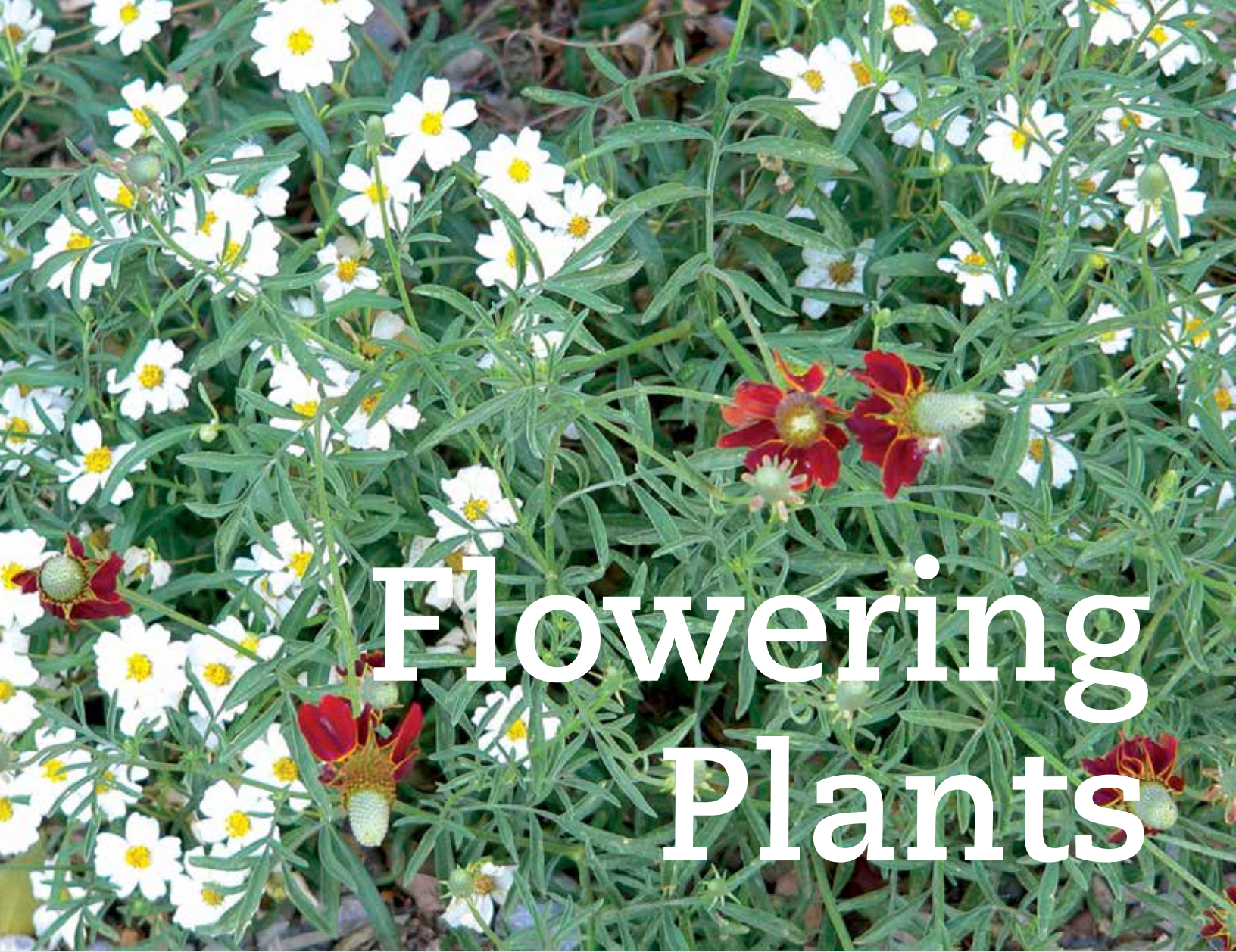
# Creating Habitats that Attract Wildlife

There are several garden amenities that both wildlife and people find especially important:

- *Layers of planting from tall tree canopies to low-growing groundcovers.*
- *The protection of dense vegetation in some areas and open spaces in others: groups of shrubs, flowers and grasses of different heights clustered along the edges of open space.*
- *A diverse community of plants with colorful, fragrant, nectar-rich flowers, edible fruits and seeds.*
- *The cooling presence of water — a small water feature, especially one located in a shady spot that trickles water into a covered reservoir so evaporation is minimized, will attract wildlife and people without wasting water.*

Gardens that serve wildlife are maintained a bit differently:

- *Bird seed and nectar feeders should be refilled and cleaned regularly.*
- *Nectar- and seed-producing plants provide sustenance with a modest amount of water and seasonal pruning/deadheading after the birds have taken all the food.*
- *Learn to manage with little or no pesticide use, which is good for your health and your pets as well as that of your wild guests.*
- *Occasionally wash away bird droppings (free fertilizer—think of it as their way of saying thanks).*
- *Weed out some plants that germinate too successfully after being processed by our feathered friends.*



# Flowering Plants

Color is one of the great benefits of xeriscape. In the plant list you'll find more than 200 flowering perennials, bulbs, annuals and groundcovers that can brighten and perfume your garden whether it's sunny or shady, add flavor to your table and attract hummingbirds and butterflies with their nectar. With so many options to choose from, use the mature size, light exposure, water use and region-adapted information in the plant list to narrow down the combinations of flowers best suited to your planting spaces.

While many of these flowering plants are nearly as long-lived as shrubs and take up nearly as much space, others are smaller in stature and have a two- to 10-year lifespan that allows you to change the look of some spaces without a big investment in time or money. Xeric flowering plants are also ideal for planting in pots to dress up your patio or front entrance when that uncontrollable urge to play in the dirt strikes.



**ACHILLEA AGERATIFOLIA**  
**Greek Yarrow**

Full Sun, Part Shade Low Water

**Mature Size:** 6" X 12"  
**Blooming Season:** Late Spring  
**Flower Color:** White

This slow-growing little plant is equally at home in the rock garden or perennial border when used as a groundcover or edging plant. Greek Yarrow is a reliably heavy bloomer, covering itself with bright white clusters of tiny flowers for many weeks in late spring. The dense gray-green foliage is tidy and evergreen (particularly in milder climates), which gives the plant season-long interest.



**ARMERIA MARITIMA**  
**Thrift**

Full Sun Medium Water

**Mature Size:** 12" X 12"  
**Blooming Season:** Late Spring  
**Flower Color:** Pink

This plant is a rock garden favorite with its tidy mound of grassy foliage and profusion of rose-pink spherical flowers. Kept deadheaded, flowering will continue throughout much of the summer. Well-drained sandy or loamy soil is best for Armeria maritima. It appreciates regular watering during the heat of summer, although drier conditions are fine for cooler times of the year. Armeria is perfect for interplanting with blue flowering Veronica and white Greek Yarrow, among others, for outstanding rock garden color combinations.

**AGASTACHE CANA**  
**Giant Hyssop**

Full Sun Medium Water

**Mature Size:** 24" X 24"  
**Blooming Season:** July-September  
**Flower Color:** Rose-Pink

Tubular, raspberry-pink flowers make Giant Hyssop a favorite of New Mexico's gardeners and hummingbirds. The flowers are prolific and continue through the fall. Native to the mountainous areas of southern New Mexico and western Texas, Agastache cana does well in average garden conditions, mixing well with other late-blooming perennials. It's cold hardy to -20° F and also remarkably heat tolerant as long as it gets adequate water.



**AQUILEGIA CHRYSANTHA**  
**Golden Columbine**

Full Shade Medium Water

**Mature Size:** 2' X 2'  
**Blooming Season:** Spring  
**Flower Color:** Yellow

Golden Columbine is the most heat-tolerant of any high mountain Columbines, allowing it to bloom longer in the season. Even after the last flowers fade, its lacy blue-green leaves are pleasant company for summer flowers. In a shaded runoff basin, Golden Columbine will self-sow, making a casual groundcover.



**AGASTACHE RUPESTRIS**  
**Licorice Mint Hyssop**

Full Sun Medium Water

**Mature Size:** 24" X 24"  
**Blooming Season:** July-September  
**Flower Color:** Orange

This Southwestern native originates from the mountainous regions of southern Arizona and northern Chihuahua, Mexico. It blooms from mid-summer through the fall with numerous spikes of gorgeous orange flowers. The threadlike, gray-green leaves give the entire plant a very soft, wispy look. The fragrance of this plant is also wonderful, so place it where you will brush against it when you walk by. Loves well-drained soil with plenty of summer heat. It's also a must for hummingbird gardens!



**ARTEMISIA VERSICOLOR**  
**Seafoam Artemisia**

Sun or Shade Low Water

**Mature Size:** 8" X 18"

The fine-textured swirling silver green foliage of Seafoam Artemisia suggests cool water running through a dry desert garden. Although it has no showy blossoms of its own, it mixes well with Salvias, Penstemons and other brightly colored flowers and with ornamental grasses such as Little Bluestem for a subtle blend of textures. Seafoam Artemisia holds up well in winter and needs less trimming than its sprawling cousin, Powis Castle Artemisia.



**BERLANDIERA LYRATA**  
**Chocolate Flower**

 Full Sun  Low Water

**Mature Size:** 16" X 16"  
**Blooming Season:** Early Spring-Summer  
**Flower Color:** Yellow

Step out into your garden on a clear summer morning and delight to the scent of chocolate that perfumes the air. This native wildflower blooms profusely all season with cheery light yellow daisies; the sweetly fragrant blossoms really do smell just like chocolate! Easily grown in a variety of soil types, this drought-tolerant species readily reseeds itself, making it a desirable addition to any wildflower meadow or informal garden area. Surround Chocolate Flower with Callirhoe (Poppy Mallow) for a bright summer-long show of color.



**CALLIRHOE INVOLUCRATA**  
**Poppy Mallow, Winecups**

 Full Sun  Low Water

**Mature Size:** 24" X 24"  
**Blooming Season:** Late Spring-Summer  
**Flower Color:** Red-Pink

The five-petaled flowers of Poppy Mallow (also known as Winecups) are a rich pinkish-red color with a white eye, and cover the plant all summer. The low-spreading stems make this plant useful on slopes or cascading over retaining walls and a valuable plant for hot south- or west-facing beds. Grows well in a wide range of soil types including clay. Gently reseeds itself and will slowly spread if you let it. Recommended companion plants are Berlandiera lyrata (Chocolate Flower), Nepeta x faassenii (Catmint) and Gray Santolina.



**CALYLOPHUS SPECIES**  
**Sundrops**

 Full Sun  Low Water

**Mature Size:** 18" X 18"  
**Blooming Season:** Spring-Summer  
**Flower Color:** Yellow

This spectacular native wildflower is ever-blooming with a profusion of large, bright yellow, four-petaled flowers. The narrow gray-green foliage gives the plant a lacy look in the garden. Calylophus thrives in the heat, and grows well in a wide range of soils, as long as they're well drained. This tough plant is the star of any dryland rock garden or xeriscape. A good shearing before the growing season starts in late spring will keep it looking tidy and loaded with flowers.



**CENTRANTHUS RUBER**  
**Red Valerian**

 Full Sun, Part Shade  Medium Water

**Mature Size:** 36" X 36"  
**Blooming Season:** Late Spring-Summer  
**Flower Color:** Red

Red Valerian is a versatile plant, being equally at home in both the xeric garden and traditional perennial border. Not fussy about its growing conditions, the showy rose-red flowers are continuous from late spring through summer. A willing reseeder under favorable conditions, Centranthus ruber prefers well-drained garden soil — not clay.



**COREOPSIS VERTICILLATA**  
**Threadleaf Coreopsis**

 Full Sun  Medium Water

**Mature Size:** 24" X 24"  
**Blooming Season:** Summer  
**Flower Color:** Yellow

Coreopsis is a carefree perennial with fine, threadlike foliage and pale, 2-inch-wide yellow flowers that cover the plant all summer. Performs best in compost-enriched soil. Add soil sulphur to keep the foliage nicely green. It is relatively late to awaken from its winter dormancy, so be patient! The "Moonbeam" cultivar is one of the most drought-tolerant varieties and bears flowers that are pale yellow.



**DIANTHUS GRATIANOPOLITANUS**  
**Garden Pinks**

 Full Sun, Part Shade  Medium Water

**Mature Size:** 1' X 2'  
**Blooming Season:** Late Spring  
**Flower Color:** Light Pink to Bright Rose Pink

Garden Pinks have single flowers on short slender stems with a light clove scent. They form dense cushions of pale blue-gray leaves that make attractive groundcovers even when the plants are not in bloom. The named varieties such as "Firewitch" have darker flower colors and bloom longer than other species, and all are beautiful growing along paths, spilling around boulders and in large pots on the patio.





**ERIOGONUM SPECIES**  
**Wild Buckwheat**

 Full Sun  Rainwater Only

**Mature Size:** 1' X 18"  
**Blooming Season:** Spring into Summer  
**Flower Color:** White, Pale Pink or Yellow

No matter where you live in the arid Southwest, there is probably a Wild Buckwheat native nearby. All have nectar-rich flowers that attract butterflies, and their nectar also supports the tiny parasitic insects that help rid our gardens of pests such as aphids and thrips. After blooming, they develop seed heads of rust brown or deep red that provide color well into autumn. Luckily several species are offered as garden plants at nurseries that specialize in native plants.

**HELIANTHUS MAXIMILIANII**  
**Maximilian Sunflower**

 Full Sun  Medium Water

**Mature Size:** Up to 120" X 120"  
**Blooming Season:** September-October  
**Flower Color:** Yellow

Maximilian Sunflower produces one of the most spectacular late-season bursts of color. The tall flowering spikes, up to 20 or 30 in a mature clump, are covered with up to 30 or more yellow, closely spaced daisies. Place *Helianthus* against walls or fences or make a hedge with it, but don't put it in the middle of your most fertile flower beds, as it will crowd out weaker neighbors. The more water it receives, the taller it gets. (Growing Tip: put it in a tomato cage early in the season and let the tall stems grow up through it so they don't flop over with the weight of their flowers later in the fall.)



**GAILLARDIA GRANDIFLORA**  
**Indian Blanketflower**

 Full Sun  Medium Water

**Mature Size:** 24" X 24"  
**Blooming Season:** Summer  
**Flower Color:** Yellow/Orange/Red

Blanketflower is one of the most dependable perennial bloomers. It's easy to grow and tough enough to handle hot microclimates. The flowers sport red centers; the petals are orange with yellow tips. The flowers keep coming all summer — just remove the spent blooms and another crop of flowers will appear in a couple of weeks. Although fairly drought-tolerant, regular watering produces the most prolific blooms.



**TETRANEURIS SYNHYMENOXYISIS**  
**Perky Sue**

 Full Sun  Low Water

**Mature Size:** 12" X 12"  
**Blooming Season:** April-August  
**Flower Color:** Yellow

A wonderful everblooming yellow daisy that is both heat-loving and drought-tolerant. The narrow, silver-green foliage is evergreen and supports short stems of yellow daisies starting in spring. A vigorous reseeder, it quickly colonizes harsh areas of the garden. Use it to interplant with cold hardy cacti. Provide lean, well-drained soil. Once established *H. scaposus* is very xeric and needs little extra water.



**GAURA LINDHEIMERI**  
**Gaura**

 Full Sun  Medium Water

**Mature Size:** 48" X 48"  
**Blooming Season:** June-September  
**Flower Color:** White or Pink

A native to the Southwest, *Gaura* gives the garden a wonderful informality with its long, wispy stems of spider-like flowers. It responds with a profusion of flowers when watered regularly during the summer. Most varieties of *Gaura* feature white flowers, but a new variety called Siskiyou Pink features pink blooms. Other native perennials that enjoy similar garden conditions and combine well with *Gaura* include *Echinacea* (Purple Coneflower) and *Agastache cana* (Giant Hyssop).



**KNIPHOFIA UVARIA**  
**Red Hot Poker**

 Full Sun  Low Water

**Mature Size:** 36" X 36"  
**Blooming Season:** Summer  
**Flower Color:** Orange

A sturdy South African native known for its tough, easy-to-grow nature. It has long grasslike foliage and unusual bicolor flower spikes in shades of orange and yellow. A substantial plant that looks great alone or in long beds lining driveways or entrances where dryness and alkaline soils might defeat even a daylily. Particularly attractive with Yarrow.

# Flower Fitness

- Many flowers will have multiple blooms throughout the season if the spent flower stems are removed once the blossoms fade.
- Some flowering plants may be longer-lived if the spent flower stems are removed before the plants put energy into producing seeds.
- Unwanted self-sowing can be prevented by cutting back plants after they bloom but before they form seeds.
- Flowers in habitat gardens may be allowed to set seeds to provide food for wildlife and cut back after the banquet is over.
- An extra deep watering or two may keep plants in bloom longer, especially if the weather has been hot and windy with little rain.



## LAVANDULA ANGUSTIFOLIA English Lavender



**Mature Size:** 36" X 36"

**Blooming Season:** Summer

**Flower Color:** Lavender

An old favorite, Lavender is a dependable performer, blooming with pleasing purple flower spikes. In fact, this is the kind of plant that quickly becomes a favorite of everyone who grows it. Its compact silver-green leaves and gorgeous flowers combine well with many xeric and hardy garden perennials. A superb plant for edging walks and paths and wherever the aromatic flowers and foliage can be enjoyed.



## NEPETA X FASSENII Catmint



**Mature Size:** 8" X 24"

**Blooming Season:** May-August

**Flower Color:** Blue

Catmint has become a cornerstone in many xeriscapes because of its hardiness and long period of bloom. The first flush of blue flowers comes in late spring. When deadheaded promptly, a second flush blooms in late summer. Out of flower, the neat mound of gray-green foliage has a pleasing fragrance and texture. Adaptable to any well-drained soil, Catmint can handle a range of light from full sun to light shade. Trim back in late winter for prolific blooms the following spring.



## OENOTHERA MACROCARPA SYN MISSOURIENSIS Yellow Evening Primrose



**Mature Size:** 1' X 2'

**Blooming Season:** Late spring

**Flower Color:** Yellow

Yellow Evening Primrose is a prairie wildflower that looks anything but wild. Its 4 inch-wide clear yellow flowers are nestled among shiny green leaves growing in a compact cultivated-looking mound. In addition to the species, there are interesting varieties including Comanche Campfire with silver leaves and red stems for added contrast. Deeply rooted and long-lived, Yellow Evening Primrose pairs nicely with Leadplant or Lavender.

# Summer Blooming Lavender

The genus *Lavandula* is a favorite group of ornamental herbs native to southern Europe and the Mediterranean. These are sun-loving plants that thrive in hot weather and grow well in the West in a wide range of soils, even compost-enriched garden loams, as long as they are well drained. Heavy, poorly drained clay soils can be fatal to lavenders.

In spring, before the plants begin to show signs of new growth, cut back the old stems by one-third to re-invigorate the plant and encourage a good show of summer flowers. Lavender plants require two to three growing seasons to reach mature size.

The two major groups of Lavenders include the English Lavenders (*L. angustifolia* varieties) and the Lavandins (*L. x intermedia* varieties), which are hybrids between English lavender and another species, *Lavandula latifolia*. Generally speaking, the English Lavenders have the deepest flower color, while the Lavandins are taller plants with larger flowers and longer flower stems.

The English Lavenders are often preferred as a source of dried flowers while the Lavandins are typically used for oil production, potpourris and lavender wands.



## PENSTEMON STRICTUS Rocky Mountain Penstemon



Full Sun



Medium Water

**Mature Size:** 24" X 24"**Blooming Season:** May-June**Flower Color:** Purple

A native *Penstemon* of the foothills and mountains of the southern Rockies (sometimes known as Beardtongue), this plant grows well in central New Mexico. It grows well in full sun, yet can tolerate some shade. Its tall, showy spikes of purple flowers last for over a month in the late spring. Spreading steadily via stolons to form large clumps of dense green foliage, Rocky Mountain Penstemon is one of the longest lived and most easily grown of the *Penstemons*.



## PENSTEMON PINIFOLIUS Pineleaf Penstemon



Full Sun



Low Water

**Mature Size:** 12" X 20"**Blooming Season:** June-July**Flower Color:** Orange

Pineleaf Penstemon is an outstanding but often overlooked species from southern New Mexico and Arizona. Blooming for 6-8 weeks in mid-summer, the tubular orange flowers are profuse, attracting hummingbirds from miles around. *P. pinifolius* is long-lived and grows easily in both xeric and traditional perennial gardens. As the plant matures, the stems become woody, forming an attractive evergreen shrublet with bright green needlelike foliage.



## PENSTEMON PSEUDOSPECTABILIS Desert Beardtongue



Full Sun



Low Water

**Mature Size:** 3' X 3'**Blooming Season:** Spring into summer**Flower Color:** Rose Pink

*Penstemon* species exhibit a wide range of flower and leaf colors, but most share a strong preference for lean, well-drained soils and modest amounts of water. Desert Beardtongue is valuable for its deep rose pink flowers that can bring hummingbirds to dine near your patio and for its persistent silver or blue-green leaves that add garden interest long after the flowers have faded for the year.

**RATIBIDA COLUMNIFERA**  
**Prairie Coneflower,**  
**Mexican Hat**

 Full Sun  Low Water

**Mature Size:** 32" X 32"  
**Blooming Season:** June-September  
**Flower Color:** Yellow-Orange

The roadsides of northeastern New Mexico light up with color in mid-summer when large stands of Prairie Coneflower come into bloom. This drought-tolerant plant is easy to establish, and it naturalizes readily so you can grow your own stand of wildflowers. Prairie Coneflower (Mexican Hat) is a heavy bloomer, with a mature plant producing hundreds of flowers with distinctive mahogany-red petals edged in yellow. Cold hardy and able to handle hot summers as long as it gets deep watering twice a month when flowering.



**SALVIA OFFICINALIS**  
**Garden Sage**

 Full Sun  Medium Water

**Mature Size:** 24" X 24"  
**Blooming Season:** August-October  
**Flower Color:** Violet-Blue

Yes, Garden Sage is an aromatic herb. Its leaves can be used to flavor meats such as pork, goose and sausage. Equally impressive is its beauty in the garden. The fuzzy leaves of Garden Sage are a delightful gray-green. Two-foot-tall spikes covered with violet-blue flowers appear in late summer and last until fall. Handles drought well once established.



**SEDUM TELEPHIUM**  
**Autumn Joy Sedum**

 Full Sun, Part Shade  Low Water

**Mature Size:** 24" X 24"  
**Blooming Season:** Summer  
**Flower Color:** Red

Once you have gone through the fall with Autumn Joy in your garden, you'll wonder how you ever lived without it. Not what you typically think of as a Sedum, this tall upright variety blooms with large flower heads that start pink and age gracefully to a rich bronze. Nice as a dried everlasting flower.




**SANTOLINA CHAMAECYPARISSUS**  
**Gray Santolina**

 Full Sun  Low Water

**Mature Size:** 18" X 36"  
**Blooming Season:** June  
**Flower Color:** Yellow

A terrific evergreen perennial known for its button-like yellow flowers and its unique aromatic silver-green foliage that looks great all year long. Its woody stems are densely covered with fine, whitish gray leaves (which is why it's sometimes known as Lavender Cotton). Can be used as a groundcover or as a foreground planting in a bed of perennials or shrubs. With a little extra shearing to remove faded flowers and tighten up the shape in early spring, it gives a garden the look of age and maturity. Very cold hardy and heat tolerant.

**SPHAERALCEA AMBIGUA**  
**Desert Globemallow**

 Full sun  Rainwater Only

**Mature Size:** 2' X 2'  
**Blooming Season:** Spring and Late Summer  
**Flower Color:** Pink, Lavender and Coral

There are at least a dozen species of Globemallow native in the arid West, and Desert Globemallow is one of the finest as it produces a strong show of colorful flowers against the backdrop of pale green leaves. It is one of the earliest and longest blooming in spring and after a rest may bloom again with late summer rains. It will self-sow in gravelly or sandy soil.



**SAPONARIA OXYMOIDES**  
**Soapwort**

 Full Sun, Part Shade  Medium Water

**Mature Size:** 9" X 24"  
**Blooming Season:** Summer  
**Flower Color:** Pink

Soapwort's bright pink flowers make it a terrific border plant in a flower garden as well as a beautiful flowering ground cover. A vigorous grower, it readily reseeds itself and will spread rapidly in a favorable situation. (Be sure the neighboring plants are large, robust growers so they don't get smothered!) Prompt shearing as the flowers fade keeps it tidy and prevents reseeding.



**TANACETUM DENSUM-AMANI**  
**Partridge Feather**

Full Sun, Part Shade Low Water

**Mature Size:** 12" X 12"  
**Blooming Season:** Early Summer  
**Flower Color:** Yellow

Partridge Feather's incredible silver-white leaves attract the attention of everyone; you can't help but pet the soft foliage. The plant forms a dense carpet of foliage topped with clusters of yellow button flowers in early summer. It thrives in the sunniest, hottest spot you can find. Needs well-drained soil.



**WYETHIA SCABRA**  
**Desert Mule's Ears**

Full Sun Rainwater Only

**Mature Size:** 2' X 3'  
**Blooming Season:** Spring into Summer  
**Flower Color:** Yellow

The rather odd name of this dryland perennial sunflower refers to its sandpapery stiff leaves held upright on slender white stems; this eye-catching long-lived sunflower has vanilla-scented showy yellow flowers and large dark brown seed heads with seeds sought after by songbirds. Desert Mule's Ears prefer lean, unamended soil at planting time and very little water once they are well rooted.



**EPILOBIUM SYN ZAUSCHNERIA**  
**Hummingbird Plant**

Full Sun Medium Water

**Mature Size:** 24" X 36"  
**Blooming Season:** Late Summer-Early Fall  
**Flower Color:** Red

Along the front range in Colorado, gardeners have come to associate fall and the buzz of busy hummingbirds with the blazing scarlet Zauschnerias. Hummingbird Plant puts on an extravagant display of red-orange flowers. It thrives planted in front of hot south- and west-facing walls and walks, in areas that might fry less heat-loving plants. Plant in well-drained soil; not too much clay. Hummingbird Plant appreciates regular watering the first year or two, particularly during dry winters, to help get it established.

*Xeric flowering plants offer a host of opportunities for combining colors, textures, shapes and fragrances in garden beds and borders. This early summertime trio includes top to bottom: Gaura lindheimeri, Penstemon pinifolius and Lavandula angustifolia.*





Cacti and succulents are among the most xeric plants on earth. Those noted in the plant list are either native to the high desert Southwest or arid areas of South Africa. Luckily for local gardeners they are among the easiest plants to grow and the larger specimens are among the boldest in architecture.

# Desert

Agaves, called Century Plants because it can take decades for them to flower, are prime examples of the sculptural qualities of these desert accents. When it rains, watch the wide Agave leaves funnel rainwater toward its roots. It's an elegant water-harvesting device.

The unexpected bonus of these rugged survivors is the brilliant show of flowers they produce. From tree-sized to tiny, with flowers from screaming scarlet to hot magenta to soft pink and lemon yellow, there are cacti and succulents for every hot dry spot in the garden.



## AGAVE PARRYI Parry's Century Plant



**Mature Size:** 30" X 30"

**Blooming Season:** Summer

**Flower Color:** Yellow

An impressive species from western New Mexico and eastern Arizona, Parry's Century Plant is one of the most cold hardy of the Agave family. Forming large, heavily toothed rosettes, the swordlike leaves are blue-green. When the plant decides to bloom (after many years of slow growth), it sends up a huge 12- to 15-foot flowering spike that will attract hummingbirds from miles around. Agaves need a long period of hot summer weather to regrow their fleshy roots after transplanting.



## CORYPHANTHA VIVIPARA Clustering Pin Cushions



**Mature Size:** 4" X 6"

**Blooming Season:** Late Spring

**Flower Color:** Pink

Coryphantha is a very adaptable species, making it a fine choice if you've never grown winter-hardy cacti before. Its dense gray-white spines obscure the stem and show off the large rose-pink flowers, which cover the plant in late spring. Clustering Pin Cushions are equally at home in the rock garden or in a xeric landscape planted with Penstemons, Zinnia grandiflora (Prairie Zinnia) or Calylophus (Sundrops).



## ECHINOCEREUS COCCINEUS Spiny Hedgehog



**Mature Size:** 5" X 15"

**Blooming Season:** Late Spring

**Flower Color:** Red

Spiny Hedgehog is often found nestled in rocky ledges under the shade of pines throughout its habitat in New Mexico and southern Colorado. The spines are needle-sharp and caution should be used in planting this showy hedgehog out of harm's way. Being a mountain dweller, Spiny Hedgehog doesn't mind being under snow for much of the winter.

# Accents

## DASYLIRION WHEELERI Sotol



**Mature Size:** 60" X 48"

**Blooming Season:** Late Spring

**Flower Color:** White

Sotol is a very handsome, rather slow-growing succulent with large rosettes of long, flexible half-inch-wide blue-green leaves edged with white teeth. With age, the plant develops a woody trunk (up to 4 feet high) and eventually blooms, producing narrow 10-foot-tall white-flowered spikes. An invaluable xeric ornamental for use all across the Southwest.





**ECHINOCEREUS REICHENBACHII**  
**Oklahoma Hedgehog**

 Full Sun  Rainwater Only

**Mature Size:** 4" X 6"  
**Blooming Season:** Late Spring  
**Flower Color:** Pink

Native to a limited area in the mountains of southwestern Oklahoma, this is one of the most beautiful of the Echinocereus species. The albispinus variety, shown here, features long, pure white spines and large, soft pink flowers. At maturity, it forms tight clusters of numerous stems.



**ECHINOCEREUS VIRIDIFLORUS**  
**Green-Flowered Hedgehog**

 Full Sun  Rainwater Only

**Mature Size:** 5" X 5"  
**Blooming Season:** Late Spring  
**Flower Color:** Green

This small hedgehog forms small clusters of two or three stems. Bright red and white spines contrast nicely with the bright green flowers that ring the stem in late spring. Flowers are fragrant, often with a hint of citrus. These plants thrive throughout central New Mexico.



**ECHINOCEREUS TRIGLOCHIDIATUS**  
**Claret Cup Hedgehog**


 Full Sun  Rainwater Only

**Mature Size:** 6" X 18"  
**Blooming Season:** Summer  
**Flower Color:** Red

Claret Cup Hedgehog is a substantial plant that forms large clusters of thick-spined stems. The glowing red-orange cupped flowers come in early summer, making Claret Cup the star of the garden when it blooms. It thrives in hot, sunny locations in well-drained, rocky soil.



**FOQUIERIA SPLENDENS**  
**Ocotillo**

 Full Sun  Rainwater Only

**Mature Size:** 96" X 60"  
**Blooming Season:** Late Spring  
**Flower Color:** Red

Ocotillo's slender, whiplike green stems provide an excellent accent in a xeric landscape. After spring or summer rains, the thorny stems sprout fleshy green leaves and scarlet flowers. Ocotillo is a slow grower, usually growing a foot or less each year. It requires well-drained soils and will thrive in hot, sunny microclimates.



**ESCOBARIA ORCUTTII**  
**Clustering Snowball**

 Full Sun  Rainwater Only

**Mature Size:** 5" X 8"  
**Blooming Season:** Late Spring  
**Flower Color:** Pink

Clustering Snowball has glistening white-spined stems that ring themselves with pink- or salmon-colored flowers. Native to southwestern New Mexico, it thrives in baking heat but has remarkable cold tolerance. Quick-draining soil is a must for this plant.





**HESPERALOE PARVIFLORA**  
**Texas Red Yucca**

 Full Sun, Part Shade  Rainwater Only

**Mature Size:** 36" X 36"  
**Blooming Season:** May-June  
**Flower Color:** Reddish-Orange

Hesperaloe is a very showy plant native to southern Texas and northeastern Mexico. Not only does it thrive in hot, dry summers, it is also remarkably tolerant to subzero winter temperatures. Evergreen clumps of narrow, dark bluish-green leaves make a great accent of year-round texture. In early summer it sends up 3- to 4-foot stalks covered with reddish flowers. A great-looking, low-maintenance plant that attracts hummingbirds.



**OPUNTIA ENGELMANNII**  
**Engelmann Prickly Pear**

 Full Sun  Rainwater Only

**Mature Size:** 5' X 8'  
**Blooming Season:** Late Spring  
**Flower Color:** Yellow or Orange

In high desert gardens, Engelmann Prickly Pear is one of the largest reliably cold-hardy cacti. Its dinner plate-sized pads stand perpendicular to the sun in summer, one of the ways it minimizes its water needs by avoiding the direct rays of the sun. Its flowers can be either yellow or a spectacular red-orange, and the same plant may have one color or the other in different years, but luscious red fruits always follow.

**PHEMERANTHUS SYN TALINUM**  
**CALYCINUM**  
**Flameflower**

 Full Sun, Part Shade  Low Water

**Mature Size:** 8" X 8"  
**Blooming Season:** Summer  
**Flower Color:** Bright Pink

This perennial relative of moss rose grows neat tufts of narrow succulent leaves topped with a continuous show of rose pink flowers every afternoon throughout the hot summer months. The flowers float above the leaves on wiry gold stems giving them a delicate appearance completely at odds with their resilient nature. They reseed easily in gravelly or sandy soil without becoming weedy. With Flameflower you can't have too much of a good thing.



**YUCCA GLAUCA**  
**Soapweed Yucca**

 Full Sun  Rainwater Only

**Mature Size:** 3' X 3'  
**Blooming Season:** Early Summer  
**Flower Color:** White-Tinged Pink

There are many species of Yucca that are native to the Southwest. They vary in height, leaf width and color but they are all reliably heat- and drought-resistant. Soapweed is one of the toughest; it is one of the smaller, narrow-leaved species that given enough time develops short stems and several clustered heads. Its bell-shaped, waxy white, fragrant flowers are borne on short candelabra-like stems, the buds sometimes tinged rose-pink.





# Groundcovers

A groundcover can be any plant or group of plants that is low-growing and aggressive enough to compete strongly with nearby plants. They can be carpet-like, growing only a few inches high and a few feet wide, or they can be large shrubs that grow only knee-high but spread several feet wide. There are groundcovers that prefer deep shade and others that grow best in full sun, and many that grow in dappled shade.

Grasses grown as lawns are the groundcover most resistant to foot traffic, but even lawns wear thin in soil compacted from frequent heavy use. Lawns are also a very high-water-use groundcover compared with the plants described in the plant list as even the medium-water-use groundcovers can be drip irrigated. The aggressive nature of the plants themselves, as well as the strategy of limiting watering to points at soil level where the roots can make good use of it, and mulching deeply to further reduce evaporation has the net result of minimizing weed invasion and reducing maintenance time.

For best results match the spread indicated in the plant list with the size of space you want to cover. The smallest mat-forming plants work well between stepping stones where the paving buffers foot traffic and collects extra moisture for the groundcover. Perfect for replacing lawns under mature trees and shrubby groundcovers, shade-loving groundcovers with the greatest spread are a great way to reduce watering and eliminate mowing in large open areas.



**ANEMOPSIS CALIFORNICA**  
**Yerba Mansa**

Full Sun, Part Shade Medium water

**Mature Size:** 1' X 3'+  
**Blooming Season:** Summer  
**Flower Color:** White

Widely regarded as a medicinal plant, and often found in the bosque as the wild groundcover under Cottonwoods, the landscape value of Yerba Mansa is finally being recognized. Its white coneflowers stand a foot above a dense carpet of large thick leaves that are deep green during the growing season, turning red and then a rich rusty brown through winter.



**MAHONIA REPENS**  
**Creeping Mahonia**

Full Shade Medium Water

**Mature Size:** 1' X 2'  
**Blooming Season:** Spring  
**Flower Color:** Yellow

The shade of a tree or large shrub along the north side of a courtyard wall with the runoff from a nearby downspout is the ideal setting for this high-elevation evergreen groundcover. Given the right spot, your reward will be year-round color— yellow flowers among the bright green leaves in spring, deep blue-green leaf color turning red-purple in cold weather. In larger spaces where a bit more height is needed, the closely related Compact Mahonia is another option.



**CERATOSTIGMA PLUMBAGINOIDES**  
**Hardy Plumbago**

Full Sun, Part Shade Medium Water

**Mature Size:** 12" X 24"  
**Blooming Season:** Early Fall  
**Flower Color:** Blue

An outstanding, long-lived groundcover that slowly weaves itself into the garden, creating large drifts of fall color. The deep blue flowers, which begin as the weather begins to cool and days grow shorter, are numerous and long-lasting. As the plant's flowering finishes, its leaves begin a month-long change to a vivid mahogany-red color. Plumbago is extremely adaptable, growing equally well in sun or shade, and thriving in a wide range of soil types.



**MARRUBIUM ROTUNDIFOLIUM**  
**Roundleaf Horehound**

Full Sun, Part Shade Low Water

**Mature Size:** 10" X 24"  
**Blooming Season:** Spring  
**Flower Color:** White

Its soft silver-green foliage and its preference for dry shade earn Roundleaf Horehound a special place in the garden. Not as aggressive as its weedy cousin, Common Horehound, or the much-used Woolly Lamb's Ears, it is much more attractive in winter and fills an important niche as living mulch under trees and large shrubs and as contrast for spring bulbs and shade-loving ornamental grasses.



**DELOSPERMA COOPERI**  
**Hardy Purple Iceplant**

Full Sun Low Water

**Mature Size:** 6" X 18"  
**Blooming Season:** Summer  
**Flower Color:** Purple-Pink

Purple Iceplant is another fine South African introduction, valued for its shimmering fuchsia-purple daisies that keep coming all summer. A vigorous spreader, it forms a dense mat of succulent, linear green leaves in any well-drained soil. Stop watering in mid-fall to harden for winter. This plant has become a staple in xeric gardens. Right at home where planted to spread on top of gravel mulch, it helps to cool down these hot areas.



**MIRABILIS MULTIFLORA**  
**Giant or Wild Four O'clock**

Full Sun, Part Shade Low Water

**Mature Size:** 2' X 5'  
**Blooming Season:** Spring to Autumn  
**Flower Color:** Rose Pink

As soon as the soil warms up in spring, the strong new shoots of Giant Four O'clock emerge and, within a few weeks' time, the first magenta blooms appear. Like clockwork, every afternoon a new flush of flowers opens from May until October, making this a colorful companion for evergreens and small trees such as Vitex. After frost, the stems detach from the starchy roots making cleanup quick and easy.



**PRUNUS BESSEYI**  
**Pawnee Buttes® Sand Cherry**

 Full Sun  Medium Water

**Mature Size:** 2' X 6'  
**Blooming Season:** Spring  
**Flower Color:** White

This low-spreading form of Sand Cherry is as rugged as it is handsome. Sprays of fragrant white flowers in spring, succulent fruit for wildlife and glossy green leaves that turn deep mahogany red before they drop in autumn give Pawnee Buttes® appeal year-round with only deep monthly watering once plants are well established.



**VERONICA PECTINATA**  
**Woolly Speedwell**

 Full Sun, Part Shade  Medium Water

**Mature Size:** 3" X 18"  
**Blooming Season:** Early Spring  
**Flower Color:** Blue

This is another great groundcovering Speedwell, unique because of its dense-growing woolly gray-green foliage. The 4-inch-tall spikes of deep blue flowers with a white eye appear in early spring — usually a few weeks before Veronica liwanensis. A good rebloomer in late summer when given encouragement with a bit of extra water. A very vigorous, long bloomer when planted into good garden soils enriched with compost.



**RHUS TRILOBATA**  
**'Autumn Amber' Prostrate Sumac**

 Full Sun  Low Water

**Mature Size:** 2' X 6'+  
**Blooming Season:** Early spring  
**Flower Color:** Yellow

'Autumn Amber' is a low-spreading form of Threeleaf Sumac with a similarly clean appearance and equally tough disposition. Covered with tiny honey-scented flowers in spring, crisp green leaves turning rusty gold in autumn and smooth purplish stems in winter, a few plants can replace a front lawn using a fraction of the water and none of the mowing time.

**ZINNIA GRANDIFLORA**  
**Prairie Zinnia**


 Full Sun  Rainwater Only

**Mature Size:** 4" X 6"  
**Blooming Season:** Summer  
**Flower Color:** Yellow

This diminutive wildflower thrives in some of the most inhospitable terrain imaginable. This plant can be a challenge to get established, but it will delight you with its bright yellow flowers in late summer. Prairie Zinnia is long lived and spreads slowly by rhizomes. This plant has interesting needlelike foliage on trailing stems. It won't green up until early summer arrives, so be patient. Once it starts to bloom it's colorful through summer and early autumn.

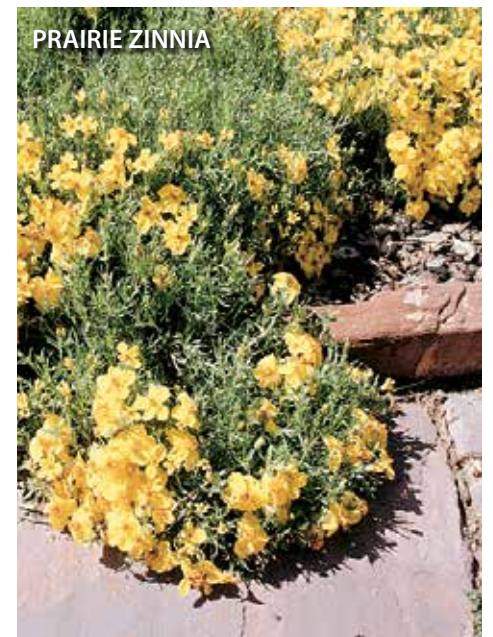


**VERBENA PERUVIANA**  
**Verbena**

 Full Sun  Medium Water

**Mature Size:** 9" X 18"  
**Blooming Season:** Summer  
**Flower Color:** Lavender to Red

Verbena is a vigorous spreading groundcover. Extensive trials across the U.S. have proven its value as a heat-loving, profuse-blooming favorite. The large bright lavender-purple flower clusters keep coming all summer. Let it go dry as fall comes to a close to harden off for winter. Makes a colorful foundation for taller growing perennials like Achillea "Moonshine" and Coreopsis "Sunray."





# Grasses

## Turf

Non-native turf grasses such as Kentucky Bluegrass, fescues and even Bermuda Grass require tremendous amounts of water to thrive—a minimum of 40 inches of water per growing season, in the case of Bluegrass. The Water Authority's xeriscape rebate is based on the square footage of turf removed. Albuquerque's annual rainfall can be less than 8 inches; clearly, Kentucky Bluegrass is not well-suited to our environment. In fact, homes built since 1995 in Albuquerque are allowed no more than 20% turf.

Lower-water alternatives include Buffalo Grass (*Bouteloua dactyloides*) and Blue Grama Grass (*Bouteloua gracilis*). These can be augmented with ornamental grasses, but regardless of the types of grasses you plant, remember to maximize watering efficiency:

- *Prepare the soil before planting by tilling a large amount of high-quality compost as deeply as possible, to improve fertility and water-holding capacity.*
- *Between April and October, water during the coolest part of the day. Avoid watering in windy conditions to minimize evaporation and overspray.*

## Ornamental Grasses

Ornamental grasses, unlike lawns, serve as horticultural exclamation points and can add interest in areas that need a bit of sprucing up.

Summer through early winter is the prime time for the soft textures and colors of ornamental grasses. They should be cut down to a height of 6-12 inches each spring. Because this leaves gaps in the planting for several weeks, place the larger grasses as you would shrubs of the same size, mixing in some evergreens or grassy succulents such as Yucca or Beargrass to create interest while the grasses regrow.

# Turf



## BOUTELOUA SYN BUCHLOE DACTYLOIDES Buffalo Grass



Full Sun



Medium Water

**Mature Size:** 3- 8"

This native prairie grass is an excellent replacement for water-thirsty Kentucky Bluegrass. Buffalo Grass doesn't tolerate a lot of shade, but when grown in a sunny location it forms a durable turf able to withstand moderate foot traffic, pests and diseases. It is a robust, sod-forming species that spreads quickly with vigorous runners, creating an inviting soft blue-green lawn. When dormant in late fall through spring it turns a soft beige color.

Buffalo Grass requires minimal mowing and fertilizing once in spring. It's a warm-season grower perfectly adapted to central New Mexico. To stay green in the hot summer months, this grass needs only two inches of water per month!

Buffalo Grass grows quickly. It can be planted using seed or "plugs" of starter plants. Seed should be sown in the spring or early summer; plugs can be planted in spring or in the fall, four to eight weeks before the first expected frost date. Once established, you'll enjoy a beautiful, low-maintenance lawn with drastically lower water bills for years to come.

Buffalo Grass grows best on heavier soils. Use Blue Grama on sandy soils or mix Buffalo Grass and Blue Grama.



## BOUTELOUA GRACILIS Blue Grama Grass



Full Sun



Low Water

**Mature Size:** 4-12"

Blue Grama is another warm-season grass that thrives in New Mexico. Its thin pale-green blades give a Blue Grama lawn a pleasing, fine texture. Its distinctive seed heads, which appear in mid to late summer, resemble tiny purplish eyelashes.

Blue Grama thrives in hot microclimates, and it's tough enough to survive sub-zero winter weather. It establishes most quickly in well-drained soil. A dense lawn of Blue Grama will need watering only about once a week during the hottest summer months. Blue Grama establishes itself faster than Buffalo Grass, so the two species are often combined to quickly form a thick, drought-tolerant lawn.



*Many lawns actually receive too much supplemental water! Collectively, we tend to pour more water on our lawns than is necessary for healthy growth and maintenance. (The same is true for many trees, shrubs and flowering plants.)*

*Some studies show that typical lawn sprinklers apply water at the rate of about 1 1/2" per hour. Unfortunately, the typical lawn can only handle about 1/2" per hour before becoming saturated. So, leaving your sprinklers running longer usually doesn't help your lawn a bit, and usually increases runoff waste.*

*If runoff is a problem in your landscape, try two short waterings of 10 minutes or less each spaced at least 30 minutes apart. This method gives the first dose of water a chance to soak in. The second watering pushes the first dose deeper into the soil.*

# Ornamental Grasses



## PANICUM VIRGATUM Switchgrass

 Full Sun, Part Shade  Medium Water

**Mature Size:** 4' X 3'  
**Blooming Season:** Summer  
**Flower Color:** Hazy Pink-Purple

There are many named cultivars of Switchgrass, all variations on the theme of tall upright leaf blades crowned in late summer with a haze of lacy seed heads. The leaves may be green or blue-green in summer, changing to a range of pinks and reds as temperatures cool and the days get shorter at the end of the growing season. Switchgrass can be grouped between evergreens or stand alone as an accent. Songbirds will love you for adding it to your garden.



## SCHIZACHYRIUM SCOPARIUM Little Bluestem

 Full Sun  Low Water

**Mature Size:** 2' X 2'  
**Blooming Season:** Fall  
**Color:** Pink to Red

Little Bluestem is a key component of much of the prairie grassland throughout the West, where it goes unnoticed until late in the year when its strong color contrast of scarlet or pink leaves among the blond seed heads of other native grasses gives it the impact of a wash of wildflowers long after the growing season has ended. Easily grown from seed or plants, the slender upright clumps sway in the breeze.



## NASSELLA syn STIPA TENUISSIMA Silky Threadgrass

 Full Sun  Low Water

**Mature Size:** 24" X 24"

Plant this ornamental grass where a gentle breeze will sway it as the late afternoon sun shines through from behind. Stipa grows well in all kinds of soils and is very water thrifty once established. Good in wildflower gardens, this plant will readily reseed itself among its neighbors.

## CALAMAGROSTIS ARUNDINACEA 'Karl Foerster' Feather Reedgrass

 Full Sun, Part Shade  Medium Water

**Mature Size:** 30" X 2'  
**Blooming Season:** Spring  
**Seed Head Color:** Pale Tan

Surprisingly heat- and drought-tolerant for a cool season grass, the dark green color of 'Karl Foerster' leaves topped with its pale straw-colored seed heads is a large part of the appeal of this cool season bunchgrass. Its vertical form adds exclamation points in the midst of cool, low-slung flowers such as Catmint and Winecups, or amplifies the upright lines of Penstemons and Salvias.



## HELICTOTRICHON SEMPERVIRENS Blue Avena Grass

 Full Sun, Part Shade  Medium Water

**Mature Size:** 24" X 24"

This evergreen plant adds texture and color over the entire growing season. The stiff gray-blue leaves are very striking and provide the foundation for the ornamental 4-foot-tall flower spikes that shoot up and ripen to a soft brown by mid-summer. Cut back in April to encourage vigorous new growth.



## Desert Friendly Xeriscape Conversion Rebate

Water Authority customers may qualify for rebates for the replacement of high-water-use turf grass with xeriscaping. If you are interested in participating in the Xeriscape Conversion Rebate, please do not start your turf removal project until you have applied online to the program and received an official Notice to Proceed. Several conditions must be met in order to qualify for the rebate. Rebates appear as credits on Water Authority customers' bills.

## Treebates

The Water Authority has a "Treebate" program to help cover the purchase of new trees that appear in this plant list. Treebates can also be used to cover the costs associated with installation, including mulch and compost. Other costs that may qualify for the rebate are professional tree care such as pruning and pest management, and irrigation upgrades for trees such as in-line drip tubing.

## Irrigation Efficiency Rebates

Rebates are available for EPA WaterSense-labeled irrigation controllers on the Water Authority's pre-qualified list. We also offer rebates for flow sensors to measure water flow and provide alerts on broken pipes and system leaks, pressure regulators, WaterSense Spray Sprinkler Bodies, and High Efficiency Rotating Sprinkler Nozzles.

## Rainwater Harvesting Rebates

Rain barrels and cisterns qualify for the Rainwater Harvesting Rebate. Rebate amount is based upon the total amount of rain that can be stored - minimum 50 gallons.

Ready to get started on your project  
or want more information?  
**Visit [www.505Outside.org](http://www.505Outside.org)**



## How to Use the Plant List

This plant list includes hundreds of plants suited to central New Mexico, but many are adaptable elsewhere in the state. We strongly recommend that you consult additional references for more detailed information, and check your neighborhood's landscape covenants before you design your landscape.

The City of Albuquerque has a pollen control ordinance that prohibits the planting of cypress, mulberry and Siberian elm trees. Juniper is limited to female plants only, and Cottonwood varieties are prohibited (except for Rio Grande cottonwood and lanceleaf cottonwood).

## Plant Points

The plant points column is used to calculate desert friendly xeriscape conversion rebate requirements. Points must add up to more than half of the square footage of the turf area being converted.



| Scientific Name                     | Common Name                        | Average Size | Deciduous or Evergreen | Light Exposure | Water Use | Plant Points |
|-------------------------------------|------------------------------------|--------------|------------------------|----------------|-----------|--------------|
| <b>DESERT ACCENTS</b>               |                                    |              |                        |                |           |              |
| Agave americana                     | Century Plant                      | 6' x 6'      | Evergreen              | Full Sun       | RW        | 30           |
| Agave chrysantha                    | Golden-Flowered Agave              | 3' X 4'      | Evergreen              | Full Sun       | RW        | 25           |
| Agave havardiana                    | Harvard Agave                      | 4' X 4'      | Evergreen              | Full Sun       | RW        | 25           |
| Agave lechuguilla                   | Lechuguilla                        | 1' X 5'      | Evergreen              | Sun/Shade      | RW        | 30           |
| Agave palmeri                       | Palmer's Agave                     | 3' X 4'      | Evergreen              | Full Sun       | RW        | 25           |
| Agave Parryi/ neomexicana           | Parry's / Mescal Agave             | 2' X 2'      | Evergreen              | Sun/Shade      | RW        | 20           |
| Agave parviflora                    | Dwarf Agave                        | 6" X 8"      | Evergreen              | Sun            | RW        | 15           |
| Agave scabra                        | Rough Agave                        | 4' X 4'      | Evergreen              | Full Sun       | RW        | 25           |
| Agave utahensis                     | Utah Agave                         | 1' X 2'      | Evergreen              | Full Sun       | RW        | 15           |
| Agave victoria-reginae              | Queen Victoria Agave               | 1' X 1'      | Evergreen              | Full Sun       | RW        | 15           |
| Aloinopsis spathulata               | Hardy Living Stones                | 1" X 6"      | Evergreen              | Full Sun       | RW        | 5            |
| Coryphantha vivipara                | Clustering Pin Cushions            | 4" X 6"      | Evergreen              | Full Sun       | RW        | 15           |
| Cylindropuntia imbricata            | Walkingstick Cholla                | 8' X 6'      | Evergreen              | Full Sun       | RW        | 35           |
| Cylindropuntia kleiniae             | Candle Cholla                      | 8' X 6'      | Evergreen              | Sun/Shade      | RW        | 25           |
| Cylindropuntia leptocaulis          | Desert / Christmas / Pencil Cholla | 4' X 6'      | Evergreen              | Full Sun       | RW        | 25           |
| Cylindropuntia spinosior            | Cane Cholla                        | 8' X 6'      | Evergreen              | Full Sun       | RW        | 35           |
| Dasyliion leiophyllum               | Green Sotol                        | 5' X 5'      | Evergreen              | Full Sun       | RW        | 30           |
| Dasyliion texanum                   | Texas Sotol                        | 5' X 5'      | Evergreen              | Sun/Shade      | RW        | 30           |
| Dasyliion wheeleri                  | Blue Sotol / Desert Spoon          | 5' X 5'      | Evergreen              | Sun/Shade      | RW        | 20           |
| Echinocereus coccineus              | Spiny Hedgehog Cactus              | 10" X 15"    | Evergreen              | Full Sun       | RW        | 10           |
| Echinocereus fendleri               | Strawberry Hedgehog                | 10" X 12"    | Evergreen              | Full Sun       | RW        | 10           |
| Echinocereus reichenbachii          | Oklahoma or Lace Hedgehog          | 4" X 6"      | Evergreen              | Full Sun       | RW        | 5            |
| Echinocereus triglochidiatus        | Claret Cup                         | 12" X 18"    | Evergreen              | Full Sun       | RW        | 15           |
| Echinocereus viridiflorus           | Green-Flowered Hedgehog            | 5" X 5"      | Evergreen              | Full Sun       | RW        | 5            |
| Escobaria orcuttii                  | Clustering Snowball                | 5" X 8"      | Evergreen              | Full Sun       | RW        | 10           |
| Fouquieria splendens                | Ocotillo                           | 12' X 8'     | Deciduous              | Full Sun       | RW        | 35           |
| Grusonia syn Cylindropuntia clavata | Club / Dagger-Spine Cholla         | 3" X 2'      | Evergreen              | Full Sun       | RW        | 15           |
| Hesperaloe capanulata               | Bell-flowered Hesperaloe           | 4' X 5'      | Evergreen              | Sun            | RW        | 25           |
| Hesperaloe funifera                 | Giant / Coahuilian Hesperaloe      | 5' X 4'      | Evergreen              | Sun            | RW        | 25           |
| Hesperaloe parviflora               | Red/Yellow-Flowering Yucca         | 3' X 3'      | Evergreen              | Sun/Shade      | RW        | 20           |
| Nolina lindheimeriana               | Dwarf Beargrass / Ribbongrass      | 3' X 3'      | Evergreen              | Sun            | RW        | 15           |
| Nolina microcarpa                   | Beargrass                          | 5' X 6'      | Evergreen              | Sun/Shade      | RW        | 35           |
| Nolina nelsoni                      | Blue Nolina                        | 4' X 4'      | Evergreen              | Sun            | RW        | 30           |
| Nolina texana                       | Beargrass                          | 4' X 4'      | Evergreen              | Sun/Shade      | RW        | 30           |
| Opuntia ellisiana / cacanapa        | Spineless Prickly Pear             | 3' X 4'      | Evergreen              | Full Sun       | RW        | 30           |
| Opuntia engelmannii                 | Desert or Engelmann Prickly Pear   | 4' X 6'      | Evergreen              | Full Sun       | RW        | 35           |
| Opuntia macrocentra                 | Purple Prickly Pear                | 3' X 3'      | Evergreen              | Full Sun       | RW        | 20           |

# PLANT LIST

| Scientific Name                       | Common Name              | Average Size | Deciduous or Evergreen | Light Exposure | Water Use | Plant Points |
|---------------------------------------|--------------------------|--------------|------------------------|----------------|-----------|--------------|
| <b>DESERT ACCENTS</b>                 |                          |              |                        |                |           |              |
| <i>Opuntia violacea</i>               | Santa Rita Prickly Pear  | 3' X 4'      | Evergreen              | Full Sun       | RW        | 25           |
| <i>Opuntia phaeacantha</i>            | Brownsprine Prickly Pear | 3' X 5'      | Evergreen              | Full Sun       | RW        | 30           |
| <i>Opuntia hystricina</i>             | Porcupine Prickly Pear   | 1' X 3'      | Evergreen              | Full Sun       | RW        | 20           |
| <i>Opuntia polycantha</i>             | Starvation Prickly Pear  | 1' X 3'      | Evergreen              | Full Sun       | RW        | 20           |
| <i>Yucca aloifolia</i>                | Spanish Dagger           | 5' X 3'      | Evergreen              | Full Sun       | RW        | 25           |
| <i>Yucca baccata</i>                  | Datil / Banana Yucca     | 4' X 5'      | Evergreen              | Full Sun       | RW        | 30           |
| <i>Yucca baileyi</i>                  | Bailey Yucca             | 3' X 3'      | Evergreen              | Full Sun       | RW        | 20           |
| <i>Yucca brevifolia</i>               | Joshua Tree              | 12' X 12'    | Evergreen              | Full Sun       | RW        | 45           |
| <i>Yucca elata</i>                    | Soaptree Yucca           | 15' X 5'     | Evergreen              | Full Sun       | RW        | 35           |
| <i>Yucca faxoniana / carnerosana</i>  | Palm Yucca               | 12' X 6'     | Evergreen              | Full Sun       | RW        | 35           |
| <i>Yucca filamentosa</i>              | Adam's Needle Yucca      | 3' X 3'      | Evergreen              | Sun/Shade      | RW        | 15           |
| <i>Yucca glauca</i>                   | Soapweed                 | 3' X 3'      | Evergreen              | Full Sun       | RW        | 20           |
| <i>Yucca harrimaniae</i>              | Harriman Yucca           | 1' X 2'      | Evergreen              | Full Sun       | RW        | 15           |
| <i>Yucca neomexicana</i>              | New Mexico Yucca         | 2' X 3'      | Evergreen              | Full Sun       | RW        | 25           |
| <i>Yucca pendula syn recurvifolia</i> | Soft-Leaf Yucca          | 4' X 3'      | Evergreen              | Sun/Shade      | Low       | 25           |
| <i>Yucca rigida</i>                   | Blue Yucca               | 3' X 3'      | Evergreen              | Full Sun       | RW        | 25           |
| <i>Yucca rostrata</i>                 | Beaked Yucca             | 12' X 4'     | Evergreen              | Full Sun       | RW        | 35           |
| <i>Yucca schidigera</i>               | Mojave Yucca             | 5' X 2'      | Evergreen              | Full Sun       | RW        | 25           |
| <i>Yucca schottii</i>                 | Mountain Yucca           | 5' X 2'      | Evergreen              | Sun/Shade      | RW        | 25           |
| <i>Yucca thomsoniana</i>              | Thompson Yucca           | 6' X 4'      | Evergreen              | Full Sun       | RW        | 35           |
| <i>Yucca torreyi</i>                  | Torrey Yucca             | 12' X 3'     | Evergreen              | Full Sun       | RW        | 30           |

|                              |                   |           |           |           |        |    |
|------------------------------|-------------------|-----------|-----------|-----------|--------|----|
| <b>FLOWERING BULBS</b>       |                   |           |           |           |        |    |
| <i>Allium sp.</i>            | Ornamental Onions | varies    | Deciduous | Sun/Shade | Medium | 10 |
| <i>Belamcanda chinensis</i>  | Blackberry Lily   | 2' X 2'   | Deciduous | Sun/Shade | Medium | 5  |
| <i>Colchicum autumnali</i>   | Autumn Crocus     | 6" X 6"   | Deciduous | Full Sun  | Medium | 3  |
| <i>Crocus spp.</i>           | Crocus            | 6" X 6"   | Deciduous | Sun/Shade | Medium | 3  |
| <i>Hyacinthus orientalis</i> | Hyacinth          | 1' X 1'   | Deciduous | Full Sun  | Medium | 5  |
| <i>Iris (rhizome-type)</i>   | Bearded Iris      | 2' X 2'   | Deciduous | Full Sun  | Medium | 10 |
| <i>Iris spp. (bulb-type)</i> | Bulb Irises       | 2' X 2'   | Deciduous | Full Sun  | Medium | 5  |
| <i>Muscari armeniacum</i>    | Grape Hyacinths   | 10" X 10" | Deciduous | Sun/Shade | Low    | 10 |
| <i>Lycoris squamigera</i>    | Pink Amaryllis    | 18" X 18" | Deciduous | Sun/Shade | Medium | 10 |
| <i>Narcissus spp.</i>        | Daffodil          | 1' X 1'   | Deciduous | Sun/Shade | Medium | 5  |
| <i>Tulipa spp.</i>           | Tulips            | 1' X 8'   | Deciduous | Sun/Shade | Medium | 5  |
| <i>Zephyranthes sp.</i>      | Rain Lily         | 6" X 6"   | Deciduous | Full Sun  | Medium | 3  |

|                         |                  |         |           |          |     |    |
|-------------------------|------------------|---------|-----------|----------|-----|----|
| <b>FLOWERING PLANTS</b> |                  |         |           |          |     |    |
| <i>Abronia sp.</i>      | Sand Verbena     | 1' X 2' | Deciduous | Full Sun | RW  | 15 |
| <i>Acantholimon sp.</i> | Prickly Dianthus | 1' X 2' | Evergreen | Full Sun | Low | 15 |

| Scientific Name                   | Common Name               | Average Size | Deciduous or Evergreen | Light Exposure | Water Use | Plant Points |
|-----------------------------------|---------------------------|--------------|------------------------|----------------|-----------|--------------|
| <i>Achillea ageratifolia</i>      | Greek Yarrow              | 6" X 1'      | Evergreen              | Sun/Shade      | Low       | 10           |
| <i>Achillea taygetea</i>          | Moonshine Yarrow          | 2' X 2'      | Evergreen              | Sun/Shade      | Medium    | 10           |
| <i>Aethionema</i> sp.             | Persian Rockcress         | 6" X 1'      | Evergreen              | Full sun       | Low       | 10           |
| <i>Agastache aurantiaca</i>       | Coronado Hyssop           | 2' X 1'      | Deciduous              | Full sun       | Low       | 10           |
| <i>Agastache cana</i>             | Giant Hyssop              | 2' X 2'      | Deciduous              | Full Sun       | Medium    | 10           |
| <i>Agastache rupestris</i>        | Sunset Hyssop             | 2' X 2'      | Deciduous              | Full Sun       | Low       | 15           |
| <i>Alcea rosea</i>                | Hollyhock                 | 5' X 1'      | Deciduous              | Full Sun       | Medium    | 5            |
| <i>Aloinopsis spathulata</i>      | Hardy Living Stones       | 1" X 6"      | Evergreen              | Full Sun       | RW        | 5            |
| <i>Alyssum montanum</i>           | Basket of Gold            | 1' X 1'      | Deciduous              | Sun/Shade      | Medium    | 5            |
| <i>Amsonia</i> species            | Sand Stars                | 2' X 2'      | Deciduous              | Full Sun       | Low       | 15           |
| <i>Anacyclus depressus</i>        | Mat Daisy                 | 6" X 1'      | Evergreen              | Sun/Shade      | Low       | 10           |
| <i>Antennaria rosea</i>           | Pussytoes                 | 6" X 1'      | Evergreen              | Sun/Shade      | Low       | 10           |
| <i>Antirrhinum hispanicum</i>     | Spanish Snapdragon        | 1' X 1'      | Deciduous              | Full Sun       | Medium    | 5            |
| <i>Anthemis tinctoria</i>         | Golden Marguerite         | 2' X 2'      | Deciduous              | Full Sun       | Medium    | 5            |
| <i>Aquilegia chrysantha</i>       | Golden Columbine          | 2' X 2'      | Deciduous              | Shade          | Medium    | 10           |
| <i>Aquilegia</i> sp.              | Columbine Species         | 1' X 1'      | Deciduous              | Shade          | Medium    | 5            |
| <i>Argemone</i> sp.               | Prickly Poppy             | 3' X 2'      | Deciduous              | Full Sun       | RW        | 15           |
| <i>Armeria maritima</i>           | Sea Thrift                | 1' X 1'      | Evergreen              | Full Sun       | Medium    | 5            |
| <i>Artemisia abrotanum</i>        | Southernwood              | 3' X 3'      | Deciduous              | Sun/Shade      | Medium    | 12           |
| <i>Artemisia</i> x Powis Castle   | Powis Castle Artemisia    | 2' X 3'      | Semi-Evergreen         | Sun/Shade      | Low       | 20           |
| <i>Artemisia stellariana</i>      | Beach Wormwood            | 1' X 2'      | Deciduous              | Sun/Shade      | Medium    | 10           |
| <i>Artemisia versicolor</i>       | Seafoam Artemisia         | 8" X 18"     | Evergreen              | Sun/Shade      | Low       | 15           |
| <i>Asclepias tuberosa</i>         | Butterflyweed             | 2' X 2'      | Deciduous              | Sun/Shade      | Medium    | 10           |
| <i>Berlandiera lyrata</i>         | Chocolate Flower          | 1' X 3'      | Deciduous              | Full Sun       | RW        | 15           |
| <i>Callirhoe involucrata</i>      | Winecups                  | 1' X 3'      | Deciduous              | Full Sun       | Low       | 15           |
| <i>Calylophus</i> species         | Sundrops                  | 1' X 2'      | Deciduous              | Full Sun       | Low       | 15           |
| <i>Castilleja</i> spp.            | Indian Paintbrush         | 1' X 1'      | Deciduous              | Sun/Shade      | Low       | 15           |
| <i>Centaurea dealbata</i>         | Persian Cornflower        | 1' X 2'      | Deciduous              | Sun/Shade      | Medium    | 10           |
| <i>Centranthus ruber</i>          | Red Valerian              | 18" X 30"    | Deciduous              | Sun/Shade      | Medium    | 12           |
| <i>Cerastium tomentosum</i>       | Snow-In-Summer            | 8" X 2'      | Deciduous              | Sun/Shade      | Medium    | 10           |
| <i>Chasmatophyllum masculinum</i> | Hardy Tiger Jaws          | 2" X 6"      | Evergreen              | Full Sun       | Low       | 5            |
| <i>Chrysanthemum maximum</i>      | Shasta Daisy              | 4' X 2'      | Deciduous              | Full Sun       | Medium    | 5            |
| <i>Convolvulus cnoereum</i>       | Silver Bush Morning Glory | 1' X 3'      | Evergreen              | Full Sun       | Low       | 15           |
| <i>Consolida ambigua</i>          | Larkspur, Annual          | 2' X 1'      | Deciduous              | Full Sun       | Medium    | 5            |
| <i>Coreopsis grandiflora</i>      | Sunray Coreopsis          | 2' X 18'     | Deciduous              | Full Sun       | Medium    | 10           |
| <i>Coreopsis lanceolata</i>       | Coreopsis                 | 3' X 2'      | Deciduous              | Full Sun       | Medium    | 10           |
| <i>Coreopsis verticillata</i>     | Threadleaf Coreopsis      | 2' X 2'      | Deciduous              | Full Sun       | Medium    | 10           |
| <i>Dalea purpurea</i>             | Purple Prairieclover      | 2' X 2'      | Deciduous              | Full Sun       | Low       | 15           |
| <i>Datura wrightii</i>            | Sacred Datura             | 2' X 6'      | Deciduous              | Full Sun       | Low       | 20           |

# PLANT LIST

| Scientific Name                                   | Common Name              | Average Size | Deciduous or Evergreen | Light Exposure | Water Use | Plant Points |
|---|--------------------------|--------------|------------------------|----------------|-----------|--------------|
| <b>FLOWERING PLANTS (continued)</b>               |                          |              |                        |                |           |              |
| <i>Dianthus barbatus</i>                          | Sweet William, Biennial  | 20" X 20"    | Deciduous              | Sun/Shade      | Medium    | 5            |
| <i>Dianthus deltoides</i>                         | Maiden Pink              | 6" X 8"      | Deciduous              | Sun/Shade      | Medium    | 5            |
| <i>Dianthus gratianopolitanus</i>                 | Cheddar Pink             | 1' X 2'      | Evergreen              | Sun/Shade      | Medium    | 10           |
| <i>Dictamnus</i> spp.                             | Gas Plant                | 3' X 3'      | Deciduous              | Sun/Shade      | Medium    | 20           |
| <i>Duchesnea indica</i>                           | Mock Strawberry          | 8" X 2'      | Deciduous              | Shade          | Medium    | 5            |
| <i>Echinacea purpurea</i>                         | Purple Coneflower        | 3' X 2'      | Deciduous              | Sun/Shade      | Medium    | 10           |
| <i>Echinops</i> species                           | Globe Thistle            | 4' X 4'      | Deciduous              | Full Sun       | Medium    | 15           |
| <i>Epilobium</i> syn. <i>Zauschneria</i> sp.      | Hummingbird Plant        | 2' X 3'      | Deciduous              | Full Sun       | Low       | 15           |
| <i>Erigeron</i> spp.                              | Fleabane Daisy           | 1' X 1'      | Deciduous              | Full Sun       | Medium    | 5            |
| <i>Eriogonum herbaceum</i> species                | Wild Buckwheat           | 1' X 18"     | Evergreen              | Full Sun       | RW        | 15           |
| <i>Erysimum hieraciifolium</i>                    | Siberian Wallflower      | 18" X 18"    | Deciduous              | Full Sun       | Medium    | 10           |
| <i>Erysimum linifolium</i>                        | Wallflower Bowles' Mauve | 2' X 2'      | Evergreen              | Full Sun       | Medium    | 10           |
| <i>Euphorbia antisiphilitica</i>                  | Candelilla               | 2' X 3'      | Evergreen              | Full Sun       | RW        | 20           |
| <i>Euphorbia myrsinites</i>                       | Blue Spurge              | 1' X 2'      | Evergreen              | Sun/Shade      | Low       | 15           |
| <i>Euphorbia rigida</i>                           | Gopher Plant             | 2' X 3'      | Evergreen              | Sun/Shade      | Low       | 15           |
| <i>Gaillardia x grandiflora</i>                   | Gaillardia               | 2' X 2'      | Deciduous              | Full Sun       | Medium    | 15           |
| <i>Gaura lindheimeri</i>                          | Gaura                    | 3' X 3'      | Deciduous              | Full Sun       | Medium    | 15           |
| <i>Geranium macrorrhizium</i>                     | Bigroot Geranium         | 4" X 18"     | Deciduous              | Shade          | Medium    | 0            |
| <i>Geranium 'Johnson's Blue'</i>                  | Johnson's Blue Geranium  | 12" X 18"    | Deciduous              | Shade          | Medium    | 10           |
| <i>Glaucium flavum</i>                            | Horned Poppy             | 2' X 2'      | Deciduous              | Sun/Shade      | Medium    | 10           |
| <i>Gypsophila paniculata</i>                      | Baby's Breath            | 3' X 3'      | Deciduous              | Sun/Shade      | Medium    | 12           |
| <i>Gypsophila repens</i>                          | Creeping Baby's Breath   | 4" X 1'      | Deciduous              | Sun/Shade      | Medium    | 5            |
| <i>Helianthemum</i> spp.                          | Sunrose                  | 6" X 2'      | Evergreen              | Full Sun       | Medium    | 10           |
| <i>Helianthus annuus</i>                          | Sunflower                | Varies       | Deciduous              | Full Sun       | Medium    | 5            |
| <i>Helianthus maximilianii</i>                    | Maximilian Sunflower     | 6' X 8'      | Deciduous              | Full Sun       | Medium    | 25           |
| <i>Helianthus tuberosus</i>                       | Jerusalem Artichoke      | 6' X 6'      | Deciduous              | Full Sun       | Medium    | 5            |
| <i>Hemerocallis</i> hybrids                       | Daylilies                | 2' X 3'      | Deciduous              | Full Sun       | Medium    | 5            |
| <i>Heterotheca</i> syn. <i>Chrysopsis villosa</i> | Golden Aster             | 18" X 2'     | Deciduous              | Full Sun       | RW        | 15           |
| <i>Heuchera sanguinea</i>                         | Coral Bells              | 18" X 18"    | Deciduous              | Sun/Shade      | Medium    | 5            |
| <i>Hosta</i> spp.                                 | Plantain Lily            | 18" X 18"    | Deciduous              | Shade          | Medium    | 5            |
| <i>Hypericum calycinum</i>                        | St. Johnswort            | 1' X 1'      | Evergreen              | Shade          | Medium    | 5            |
| <i>Iberis sempervirens</i>                        | Candytuft                | 1' X 18"     | Evergreen              | Shade          | Medium    | 5            |
| <i>Ipomoea leptophylla</i>                        | Bush Morning Glory       | 2' X 3'      | Deciduous              | Full Sun       | RW        | 20           |
| <i>Kniphofia uvaria</i>                           | Red Hot Poker            | 3' X 2'      | Deciduous              | Full Sun       | Low       | 15           |
| <i>Leuchanthemum x superbum</i>                   | Shasta Daisy             | 2' X 2'      | Deciduous              | Sun/Shade      | Medium    | 15           |
| <i>Liatris punctata</i>                           | Gayfeather               | 2' X 3'      | Deciduous              | Full Sun       | Low       | 15           |
| <i>Liatris scariosa</i>                           | Tall Gayfeather          | 3' X 3'      | Deciduous              | Full Sun       | Medium    | 10           |

| Scientific Name                         | Common Name                     | Average Size | Deciduous or Evergreen | Light Exposure | Water Use | Plant Points |
|---|---------------------------------|--------------|------------------------|----------------|-----------|--------------|
| Linaria spp.                            | Butter and Eggs/Baby Snapdragon | 18" X 18"    | Deciduous              | Full Sun       | Medium    | 10           |
| Linum perenne                           | Blue Flax                       | 18" X 18"    | Deciduous              | Sun/Shade      | Medium    | 10           |
| Lobelia laxiflora                       | Mexican Lobelia                 | 2' X 3'      | Deciduous              | Sun/Shade      | Medium    | 12           |
| Lupinus argenteus                       | Silverstem Lupine               | 2' X 2'      | Deciduous              | Full Sun       | Low       | 15           |
| Lychnis sp.                             | Rose Champion, Maltese Cross    | 18" X 18"    | Deciduous              | Sun/Shade      | Medium    | 10           |
| Manfreda maculosa                       | Texas Tuberose                  | 3' X 2'      | Deciduous              | Sun/Shade      | Low       | 15           |
| Melampodium leucanthum                  | Blackfoot Daisy                 | 1' X 16"     | Deciduous              | Full Sun       | RW        | 15           |
| Mirabilis jalapa                        | Garden Four O'Clock             | 4' X 4'      | Deciduous              | Full Sun       | Medium    | 20           |
| Monarda spp.                            | Beebalm / Lemon Mint            | Varies       | Deciduous              | Full Sun       | Medium    | 0            |
| Nepeta x faasseni                       | Catmint                         | 8" X 2'      | Deciduous              | Sun/Shade      | Low       | 15           |
| Nierembergia hippomanica 'Violacea'     | Cup Flower                      | 10' X 1'     | Deciduous              | Full Sun       | Medium    | 5            |
| Oenothera berlandieri                   | Mexican Evening Primrose        | 1' X 3'      | Semi-Evergreen         | Sun/Shade      | Low       | 15           |
| Oenothera caespitosa                    | White Evening Primrose          | 1' X 2'      | Evergreen              | Full Sun       | RW        | 15           |
| Oenothera hookerii                      | Hooker Primrose, Biennial       | 2' X 3'      | Deciduous              | Full Sun       | Medium    | 10           |
| Oenothera macrocarpa syn. missouriensis | Yellow Evening Primrose         | 1' X 2'      | Deciduous              | Sun/Shade      | Medium    | 10           |
| Oenothera organensis                    | Organ Mountain Evening Primrose | 2' X 4'      | Deciduous              | Sun/Shade      | Medium    | 20           |
| Oenothera pallida                       | Pale Evening Primrose           | 18" X 18"    | Evergreen              | Full Sun       | Low       | 15           |
| Origanum sp.                            | Ornamental Oregano              | 1' X 2'      | Deciduous              | Sun/Shade      | Medium    | 10           |
| Osteospermum barberiae                  | Hardy African Daisy             | 4" X 1'      | Deciduous              | Full Sun       | Medium    | 5            |
| Paeonia sp.                             | Peony                           | 2' X 3'      | Deciduous              | Sun/Shade      | Medium    | 10           |
| Penstemon ambiguus                      | Bush Penstemon                  | 2' X 3'      | Evergreen              | Full Sun       | RW        | 20           |
| Penstemon angustifolius                 | Narrowleaf Penstemon            | 1' X 1'      | Deciduous              | Full Sun       | RW        | 10           |
| Penstemon barbatus                      | Scarlet Bugler Penstemon        | 3' X 1'      | Deciduous              | Sun/Shade      | Medium    | 10           |
| Penstemon cardinalis                    | Cardinal Penstemon              | 3' X 2'      | Evergreen              | Full Sun       | Low       | 15           |
| Penstemon clutei                        | Sunset Penstemon                | 2' X 2'      | Evergreen              | Full Sun       | Low       | 15           |
| Penstemon jamesii                       | Penstemon, James                | 10" X 10"    | Evergreen              | Full Sun       | Low       | 10           |
| Penstemon palmeri                       | Palmer Penstemon                | 3' X 2'      | Evergreen              | Full Sun       | RW        | 15           |
| Penstemon pinifolius                    | Pineleaf Penstemon              | 1" X 20"     | Evergreen              | Full Sun       | Low       | 15           |
| Penstemon pseudospectabilis             | Desert Beardtongue              | 3' X 3'      | Evergreen              | Sun/Shade      | Low       | 15           |
| Penstemon secundifloris                 | Sidebells                       | 1' X 8"      | Deciduous              | Full Sun       | Low       | 10           |
| Penstemon strictus                      | Rocky Mountain Penstemon        | 2' X 2'      | Evergreen              | Sun/Shade      | Medium    | 15           |
| Perovskia atriplicifolia                | Russian Sage                    | 3' X 4'      | Deciduous              | Full Sun       | Medium    | 20           |
| Phemeranthus syn. Talinum calycinum     | Flameflower                     | 8" X 8"      | Deciduous              | Sun/Shade      | Low       | 10           |
| Phlomis sp.                             | Jerusalem Sage, Kashmir Sage    | 2' X 3'      | Deciduous              | Full Sun       | Medium    | 12           |
| Phlox subulata                          | Creeping Phlox                  | 6" X 1'      | Deciduous              | Full Sun       | Medium    | 3            |
| Phyla nodiflora                         | Creeping Lippia                 | 3" X 2'      | Deciduous              | Sun/Shade      | Medium    | 10           |
| Physalis lobata                         | Purple Groundcherry             | 4" X 2'      | Deciduous              | Full Sun       | Low       | 15           |

# PLANT LIST

| Scientific Name                     | Common Name                               | Average Size | Deciduous or Evergreen | Light Exposure | Water Use | Plant Points |
|-------------------------------------|---|--------------|------------------------|----------------|-----------|--------------|
| <b>FLOWERING PLANTS (continued)</b> |   |              |                        |                |           |              |
| Platycodon sp.                      | Balloon Flower                            | 2' X 18"     | Deciduous              | Sun/Shade      | Medium    | 5            |
| Psilostrophe tagetina               | Paperflower                               | 16" X 16"    | Deciduous              | Full Sun       | RW        | 15           |
| Ratibida columnifera                | Coneflower, Mexican Hat                   | 32" X 32"    | Deciduous              | Full Sun       | Low       | 15           |
| Rudbeckia fulgida                   | Goldsturm Rudbeckia                       | 2' X 2'      | Deciduous              | Full Sun       | Medium    | 10           |
| Ruellia humilis                     | Wild Petunia                              | 6" X 1'      | Deciduous              | Sun/Shade      | Medium    | 5            |
| Ruta graveolens                     | Rue                                       | 2' X 2'      | Evergreen              | Full Sun       | Medium    | 10           |
| Salvia azurea grandiflora           | Pitcher Sage                              | 3' X 3'      | Deciduous              | Sun/Shade      | Medium    | 10           |
| Salvia daghestanica                 | Dwarf Silver Leaf Sage                    | 1' X 1'      | Deciduous              | Full Sun       | Low       | 10           |
| Salvia darcyi                       | Texas Red Sage                            | 30" X 2'     | Deciduous              | Full Sun       | Low       | 15           |
| Salvia nemerosa                     | May Night Salvia                          | 18" X 18"    | Deciduous              | Sun/Shade      | Medium    | 5            |
| Saponaria ocymoides                 | Soapwort                                  | 9" X 18"     | Deciduous              | Sun/Shade      | Medium    | 5            |
| Scabiosa columbaria                 | Pincushion Flower                         | 18" X 18"    | Deciduous              | Sun            | Medium    | 10           |
| Scutellaria resinosa & wrightii     | Plains Skullcap                           | 1' X 1'      | Deciduous              | Sun/Shade      | Low       | 10           |
| Sedum spectabile                    | Stonecrop                                 | 2' X 2'      | Evergreen              | Sun/Shade      | Low       | 15           |
| Sedum telephium                     | Autumn Joy Sedum                          | 2' X 2'      | Evergreen              | Sun/Shade      | Low       | 15           |
| Sempervivum tectorum                | Hen and Chicks                            | 6" X 6"      | Evergreen              | Shade          | Low       | 5            |
| Senecio flaccidus syn. longilobus   | Silver Groundsel                          | 2' X 2'      | Deciduous              | Full Sun       | RW        | 15           |
| Solidago dwarf sp.                  | Dwarf Goldenrod                           | 18" X 2'     | Deciduous              | Sun/Shade      | Medium    | 10           |
| Solidago hybrids                    | Goldenrod                                 | 3' X 3'      | Deciduous              | Sun/Shade      | Medium    | 15           |
| Sphaeralcea spp.                    | Globemallow                               | 3' X 3'      | Deciduous              | Full Sun       | RW        | 15           |
| Stachys byzantina                   | Woolly Lamb's Ear                         | 1' X 18"     | Deciduous              | Sun/Shade      | Medium    | 10           |
| Stachys coccinea                    | Scarlet Nettle                            | 1' X 2'      | Deciduous              | Sun/Shade      | Medium    | 5            |
| Stanleya pinnata                    | Prince's Plume                            | 3' X 2'      | Deciduous              | Full Sun       | Low       | 15           |
| Tagetes lucida                      | Mexican Marigold                          | 18" X 18"    | Deciduous              | Full Sun       | Medium    | 10           |
| Tanacetum densum-amani              | Partridge Feather                         | 8" X 18"     | Evergreen              | Sun/Shade      | Low       | 10           |
| Tanacetum vulgare                   | Tansy                                     | 3' X 3'      | Evergreen              | Sun/Shade      | Medium    | 15           |
| Tetranneuris syn. Hymenoxys sp.     | Angelita Daisy/Perky Sue                  | 1' X 1'      | Deciduous              | Full Sun       | Low       | 10           |
| Teucrium chamaedrys                 | Wall Germander                            | 10" X 18"    | Evergreen              | Sun/Shade      | Medium    | 10           |
| Thelesperma ambigua                 | Rayed or Threadleaf Cota                  | 2' X 2'      | Deciduous              | Full Sun       | Low       | 15           |
| Thymophila syn. Dyssodia acerosa    | Wild Marigold                             | 1' X 1'      | Deciduous              | Full Sun       | RW        | 10           |
| Thymus pseudolanuginosus            | Woolly and Dwarf and minus Creeping Thyme | 3" X 1'      | Evergreen              | Shade          | Medium    | 5            |
| Tradescantia occidentalis           | Western Spiderwort                        | 2' X 2'      | Deciduous              | Sun/Shade      | Medium    | 10           |
| Verbena spp.                        | Verbena                                   | varies       | Deciduous              | Full Sun       | Low       | 10           |
| Verbena bipinnatifida               | Fern Verbena                              | 1' X 1'      | Deciduous              | Full Sun       | Low       | 10           |
| Verbena rigida                      | Sandpaper Verbena                         | 1' X 3'      | Deciduous              | Full Sun       | Low       | 20           |
| Verbena wrightii                    | Western Vervain                           | 2' X 2'      | Deciduous              | Full Sun       | RW        | 15           |
| Veronica incana                     | Silver Speedwell                          | 18" X 18"    | Evergreen              | Sun/Shade      | Medium    | 10           |

| Scientific Name    | Common Name         | Average Size | Deciduous or Evergreen | Light Exposure | Water Use | Plant Points |
|--------------------|---------------------|--------------|------------------------|----------------|-----------|--------------|
| Wyethia scabra     | Desert Mule's Ear   | 2' X 3'      | Deciduous              | Full Sun       | RW        | 20           |
| Zinnia acerosa     | White Desert Zinnia | 6" X 10"     | Deciduous              | Full Sun       | RW        | 10           |
| Zinnia grandiflora | Desert Zinnia       | 8" X 16"     | Deciduous              | Full Sun       | RW        | 15           |

**GRASSES, TURF** (Grasses treated as turf with sprinkler irrigation do not qualify for the desert friendly xeriscape conversion rebate)

|                                    |                     |         |           |           |        |   |
|------------------------------------|---------------------|---------|-----------|-----------|--------|---|
| Agrostis spp.                      | Bentgrass           | Mowed   | Evergreen | Full Sun  | High   | 0 |
| Bouteloua gracilis                 | Blue Grama          | Varies  | Deciduous | Full Sun  | Low    | 0 |
| Bouteloua syn. Buchloe dactyloides | Bufflalo Grass      | Mowed   | Deciduous | Full Sun  | Medium | 0 |
| Cynodon dactylon hybrids           | Hybrid Bermudagrass | Mowed   | Deciduous | Full Sun  | Medium | 0 |
| Festuca elatior and all Festuca    | Turf Tall Fescue    | Mowed   | Evergreen | Sun/Shade | High   | 0 |
| Festuca ovina 'Covar'              | Covar Sheep Fescue  | Unmowed | Evergreen | Sun/Shade | Medium | 0 |
| Festuca ovina except Glauca        | Sheep's Fescue      | Mowed   | Evergreen | Sun/Shade | High   | 0 |
| Lolium perenne and all Lolium      | Ryegrass, Perennial | Mowed   | Evergreen | Sun/Shade | High   | 0 |
| Poa pratensis and all Poa          | Kentucky Bluegrass  | Mowed   | Evergreen | Sun/Shade | High   | 0 |
| Zoysia spp.                        | Zoysia Grass        | Mowed   | Deciduous | Full Sun  | Medium | 0 |

**GRASSES, ORNAMENTAL**

|  |                             |           |           |           |        |    |
|--|-----------------------------|-----------|-----------|-----------|--------|----|
| Achnatherum syn. Oryzopsis hymenoides    | Indian Ricegrass            | 18" X 18" | Deciduous | Full Sun  | RW     | 15 |
| Andropogon gerardii                      | Big Bluestem                | 5' X 1'   | Deciduous | Full Sun  | Medium | 15 |
| Andropogon hallii                        | Sand Bluestem               | 4' X 2'   | Deciduous | Full Sun  | Low    | 15 |
| Aristida purpurea                        | Purple Threeawn             | 1' X 1'   | Deciduous | Full Sun  | RW     | 15 |
| Arundo donax                             | Carrizo Cane                | 20' X 20' | Deciduous | Full Sun  | Medium | 15 |
| Blepharoneuron triclepsis                | Pine Dropseed/Mountain Mist | 18" X 1'  | Deciduous | Sun/Shade | Low    | 15 |
| Bothriochloa barbinodis                  | Cane Beardgrass             | 24" X 18" | Deciduous | Full Sun  | RW     | 15 |
| Bouteloua curtipendula                   | Sideoats Gramma             | 30" X 2'  | Deciduous | Full Sun  | Low    | 15 |
| Bouteloua gracilis                       | Blue Grama                  | Varies    | Deciduous | Full Sun  | Low    | 15 |
| Calamagrostis arundinacea 'Karl Foester' | Feather Reed Grass          | 30" X 2'  | Deciduous | Sun/Shade | Medium | 10 |
| Deschampsia cespitosa                    | Tufted Hair Grass           | 18" X 24" | Deciduous | Full Sun  | Medium | 10 |
| Eragrostis tricoles                      | Sand Lovegrass              | 3' X 3'   | Deciduous | Full Sun  | Low    | 15 |
| Festuca idahoensis 'Joseph' & 'Siskiyou' | Blue Idaho Fescue           | 2' X 1'   | Evergreen | Sun/Shade | Medium | 5  |
| Festuca ovina glauca                     | Blue Fescue                 | 1' X 1'   | Evergreen | Sun/Shade | Medium | 5  |
| Helictotrichon sempervirens              | Blue Avena Grass            | 2' X 2'   | Evergreen | Sun/Shade | Medium | 10 |
| Koeleria macrantha                       | Junegrass                   | 18" X 18" | Evergreen | Sun/Shade | Low    | 15 |
| Leymus cinereus                          | Great Basin Wildrye         | 4' X 3'   | Deciduous | Sun/Shade | Low    | 15 |
| Miscanthus spp.                          | Maiden Grass                | 5' X 5'   | Deciduous | Sun/Shade | Medium | 15 |
| Muhlenbergia capillaris 'Regal Mist'     | Regal Mist Muhly            | 3' X 3'   | Deciduous | Full Sun  | Medium | 15 |
| Muhlenbergia dubia                       | Pine Muhly                  | 3' X 3'   | Deciduous | Full Sun  | Medium | 15 |
| Muhlenbergia emersleyi                   | Bull Muhly                  | 3' X 3'   | Deciduous | Full Sun  | Low    | 15 |

# PLANT LIST

| Scientific Name                             | Common Name                     | Average Size | Deciduous or Evergreen | Light Exposure | Water Use | Plant Points |
|---|---------------------------------|--------------|------------------------|----------------|-----------|--------------|
| <b>GRASSES, ORNAMENTAL (continued)</b>      |                                 |              |                        |                |           |              |
| Muhlenbergia lindheimerii                   | Lindheimer Muhly                | 5' X 5'      | Deciduous              | Full Sun       | Low       | 20           |
| Muhlenbergia porteri                        | Bush Muhly                      | 1' X 2'      | Deciduous              | Full Sun       | RW        | 15           |
| Muhlenbergia rigens                         | Deer Grass                      | 4' X 4'      | Deciduous              | Full Sun       | Low       | 20           |
| Muhlenbergia rigida                         | Purple Muhly                    | 2' X 3'      | Deciduous              | Full Sun       | Low       | 15           |
| Nassella syn. Stipa tenuissima              | Threadgrass                     | 2' X 2'      | Deciduous              | Full Sun       | Low       | 15           |
| Panicum virgatum                            | Switchgrass                     | 4' X 3'      | Deciduous              | Sun/Shade      | Medium    | 15           |
| Pascopyrum syn. Agropyron smithii           | Western Wheatgrass              | 2' X 2'      | Deciduous              | Sun/Shade      | Medium    | 10           |
| Pennisetum alopecuroides                    | Hardy Fountain Grass            | 30" X 30"    | Deciduous              | Full Sun       | Medium    | 15           |
| Phyllostachys aurea                         | Golden Bamboo                   | 15' X 15'    | Evergreen              | Sun/Shade      | Medium    | 20           |
| Pleuraphis syn. Hilaria jamesii             | Galleta                         | 14" X 14"    | Deciduous              | Full Sun       | Low       | 10           |
| Schizachyrium scoparium                     | Little Bluestem                 | 2' X 2'      | Deciduous              | Full Sun       | Low       | 15           |
| Sorghastrum nutans                          | Indiangrass                     | 4' X 2'      | Deciduous              | Full Sun       | Medium    | 15           |
| Sporobolus airoides                         | Alkali Sacaton                  | 2' X 2'      | Deciduous              | Full Sun       | Low       | 15           |
| Sporobolus cryptandrus                      | Sand Dropseed                   | 2' X 2'      | Deciduous              | Full Sun       | RW        | 15           |
| Sporobolus wrightii                         | Giant Sacaton                   | 5' X 5'      | Deciduous              | Full Sun       | Medium    | 20           |
| Thinopyrum ponticum syn. Elytrigia elongata | "Jose" Tall Wheatgrass          | 4' X 2'      | Deciduous              | Full Sun       | Medium    | 10           |
| <b>GROUNDCOVERS</b>                         |                                 |              |                        |                |           |              |
| Aegopodium variegatum                       | Variegated Bishop's Weed        | 1' X 2'      | Deciduous              | Shade          | Medium    | 5            |
| Achillea Millefolium                        | Yarrow                          | 2' X 2'      | Evergreen              | Sun/Shade      | Medium    | 10           |
| Anemopsis californica                       | Yerba Mansa                     | 1' X 3'      | Deciduous              | Sun/Shade      | Medium    | 15           |
| Arctostaphylos uva-ursi                     | Kinnikinnick                    | 9" X 2'      | Evergreen              | Shade          | Medium    | 10           |
| Artemisia frigida                           | Fringed Sage                    | 18" X 18"    | Deciduous              | Full Sun       | Low       | 15           |
| Artemisia ludoviciana                       | Prairie Sage                    | 18" X 3'     | Evergreen              | Full Sun       | Low       | 15           |
| Cerastium tomentosum                        | Snow-In-Summer                  | 8" X 2'      | Deciduous              | Sun/Shade      | Medium    | 10           |
| Ceratostigma plumbaginoides                 | Dwarf Plumbago                  | 1' X 2'      | Deciduous              | Shade          | Medium    | 10           |
| Cotoneaster dammeri                         | Bearberry Cotoneaster           | 1' X 9'      | Evergreen              | Sun/Shade      | Medium    | 30           |
| Cotoneaster horizontalis 'Perpusillus'      | Prostrate Rockspray Cotoneaster | 1' X 5'      | Evergreen              | Sun/Shade      | Medium    | 25           |
| Cotoneaster salicifolius 'Repens'           | Willowleaf Cotoneaster          | 1' X 9'      | Evergreen              | Full Sun       | Medium    | 30           |
| Delosperma congestum & nubigenum            | Yellow Iceplant                 | 3" X 2'      | Evergreen              | Sun/Shade      | Low       | 10           |
| Delosperma cooperi                          | Purple Iceplant                 | 6" X 18"     | Evergreen              | Full sun       | Low       | 10           |
| Delosperma floribundum                      | Tufted Iceplant                 | 6" X 12"     | Evergreen              | Full Sun       | Low       | 10           |
| Delosperma sphaemanthoides                  | Dwarf Tufted Iceplant           | 1" X 8"      | Evergreen              | Full Sun       | Low       | 10           |
| Ephedra minima                              | Dwarf Joint Fir                 | 1' X 1'      | Evergreen              | Sun/Shade      | Medium    | 5            |
| Erigeron flagellaris                        | Whiplash Daisy                  | 8" X 3'      | Evergreen              | Sun/Shade      | Low       | 15           |
| Euphorbia cyparissias                       | Cypress Spurge                  | 1' X 1'      | Evergreen              | Sun/Shade      | Medium    | 5            |



| Scientific Name   | Common Name                                  | Average Size | Deciduous or Evergreen | Light Exposure | Water Use | Plant Points |
|---|--|--------------|------------------------|----------------|-----------|--------------|
| <i>Juniperus horizontalis</i>   | Carpet Juniper                               | 6"-2' X 5'   | Evergreen              | Sun/Shade      | Low       | 25           |
| <i>Marrubium rotundifolium</i>  | Roundleaf Horehound                          | 10" X 24"    | Evergreen              | Sun/Shade      | Low       | 15           |
| <i>Mirabilis multiflora</i>   | Native Four O'Clock                          | 2' X 5'      | Deciduous              | Full Sun       | Low       | 25           |
| <i>Prunus besseyi</i> 'Pawnee Buttes'                                   | Spreading Sand Cherry                        | 2' X 6'      | Deciduous              | Full Sun       | Medium    | 25           |
| <i>Phyla nodiflora</i>  | Creeping Lippia                              | 3" X 2'      | Deciduous              | Sun/Shade      | Medium    | 10           |
| <i>Rhus aromatica</i> 'Gro-low'   | Gro-Low Sumac                                | 2' X 6'      | Deciduous              | Full Sun       | Low       | 35           |
| <i>Rhus trilobata</i> 'Autumn Amber'                                    | Prostrate Sumac                              | 2' X 6'      | Deciduous              | Full Sun       | Low       | 35           |
| <i>Rosmarinus officinalis</i> 'Prostrata'                               | Creeping Rosemary                            | 2' X 6'      | Evergreen              | Full Sun       | Low       | 30           |
| <i>Santolina chamaecyparissus</i>                                       | Gray Lavender Cotton                         | 2' X 3'      | Evergreen              | Full Sun       | Low       | 15           |
| <i>Santolina virens</i>   | Green Lavender Cotton                        | 2' X 3'      | Evergreen              | Full Sun       | Low       | 15           |
| <i>Sedum reflexum</i>   | Blue Spruce Sedum                            | 1' X 2'      | Evergreen              | Sun/Shade      | Low       | 15           |
| <i>Sedum spurium</i>  | Dragon's Blood Sedum                         | 6" X 1'      | Evergreen              | Sun/Shade      | Medium    | 5            |
| <i>Teucrium capitatum</i> ssp. <i>Majoricum</i> syn. <i>T. aroanium</i> | Creeping Gray Germander syn. Greek Germander | 4" X 18"     | Evergreen              | Sun/Shade      | Medium    | 10           |
| <i>Teucrium chamaedrys</i> "Prostratum"                                 | Creeping Germander                           | 6" X 24"     | Evergreen              | Sun/Shade      | Medium    | 10           |
| <i>Thymus pseudolanuginosus</i>   | Woolly Thyme                                 | 3" X 1'      | Evergreen              | Shade          | Medium    | 5            |
| <i>Thymus serpyllum</i>   | Creeping Thyme                               | 3" X 1'      | Evergreen              | Sun/Shade      | Medium    | 5            |
| <i>Thymus vulgaris</i>  | Culinary Thyme                               | 1' X 1'      | Evergreen              | Full Sun       | Low       | 10           |
| <i>Verbena peruviana</i>  | Verbena                                      | 9" X 18"     | Deciduous              | Full Sun       | Low       | 12           |
| <i>Veronica liwanensis</i>  | Turkish Speedwell                            | 3" X 2'      | Evergreen              | Shade          | Medium    | 10           |
| <i>Veronica pectinata</i>   | Wooly Speedwell                              | 3" X 18"     | Evergreen              | Shade          | Medium    | 10           |
| <i>Veronica prostrata</i>   | Harebell Veronica                            | 8" X 1'      | Deciduous              | Sun/Shade      | Medium    | 5            |
| <i>Vinca major</i>  | Giant Periwinkle                             | 1' X 4'      | Evergreen              | Shade          | Medium    | 10           |
| <i>Vinca minor</i>  | Periwinkle                                   | 9" X 2'      | Evergreen              | Shade          | Medium    | 5            |

### SHRUBS, DECIDUOUS

|   |                             |           |           |           |        |    |
|---|-----------------------------|-----------|-----------|-----------|--------|----|
| <i>Acacia constricta</i>                            | Whitethorn Acacia           | 10' X 10' | Deciduous | Full Sun  | RW     | 40 |
| <i>Acacia greggii</i>                               | Catclaw Acacia              | 10' X 12' | Deciduous | Full Sun  | RW     | 40 |
| <i>Aloysia wrightii</i>                             | Mexican Oregano or Beebrush | 5' X 4'   | Deciduous | Full Sun  | RW     | 25 |
| <i>Amelanchier utahensis</i>                        | Utah Serviceberry           | 8' X 8'   | Deciduous | Full Sun  | Low    | 30 |
| <i>Amorpha cana</i>                                 | Dwarf Leadplant             | 2' X 3'   | Deciduous | Full Sun  | Medium | 10 |
| <i>Amorpha canescens</i>                            | Leadplant                   | 2' X 3'   | Deciduous | Full Sun  | Low    | 15 |
| <i>Amorpha fruticosa</i>                            | False Indigo                | 10' X 10' | Deciduous | Sun/Shade | Medium | 30 |
| <i>Anisacanthus quadrifidus</i> var <i>wrightii</i> | Flame Anisacanthus          | 4' X 4'   | Deciduous | Sun/Shade | Low    | 20 |
| <i>Anisacanthus thurberi</i>                        | Desert Honeysuckle          | 5' X 4'   | Deciduous | Sun/Shade | Low    | 20 |
| <i>Berberis thunbergii</i>                          | Japanese Barberry           | 4' X 4'   | Deciduous | Sun/Shade | Medium | 15 |
| <i>Berberis thunbergii</i> 'Atropur. Nana'          | Crimson Pigmy Barberry      | 2' X 2'   | Deciduous | Full Sun  | Medium | 10 |
| <i>Berberis thunbergii</i> Atropurpurea             | Redleaf Barberry            | 4' X 4'   | Deciduous | Full Sun  | Medium | 15 |
| <i>Buddleia davidii</i> nanhoensis                  | Dwarf Butterfly Bush        | 5' X 7'   | Deciduous | Sun/Shade | Medium | 20 |

# PLANT LIST

| Scientific Name                         | Common Name               | Average Size | Deciduous or Evergreen | Light Exposure | Water Use | Plant Points |
|---|---------------------------|--------------|------------------------|----------------|-----------|--------------|
| <b>SHRUBS, DECIDUOUS (continued)</b>    |                           |              |                        |                |           |              |
| Buddleia marrubifolia                   | Woolly Butterfly Bush     | 4' X 4'      | Deciduous              | Full Sun       | Low       | 25           |
| Caesalpinia gilliesii                   | Yellow Bird of Paradise   | 8' X 10'     | Deciduous              | Full Sun       | RW        | 30           |
| Caragana spp.                           | Peashrub                  | 8' X 8'      | Deciduous              | Full Sun       | Medium    | 25           |
| Caryopteris x clandonensis              | Blue Mist Spirea          | 3' X 5'      | Deciduous              | Full Sun       | Low       | 20           |
| Cercocarpus montanus                    | Montane Mountain Mahogany | 10' X 8'     | Deciduous              | Full Sun       | Low       | 35           |
| Chaenomeles japonica                    | Flowering Quince          | 4' X 4'      | Deciduous              | Full Sun       | Medium    | 15           |
| Chamaebatiaria millefolium              | Fernbush                  | 5' X 6'      | Deciduous              | Full Sun       | Low       | 30           |
| Cotoneaster apiculatus                  | Cranberry Cotoneaster     | 4' X 8'      | Deciduous              | Sun/Shade      | Medium    | 25           |
| Cotoneaster divaricatus                 | Spreading Cotoneaster     | 3' X 6'      | Deciduous              | Sun/Shade      | Medium    | 25           |
| Cotoneaster horizontalis                | Rock Cotoneaster          | 2' X 9'      | Deciduous              | Full Sun       | Medium    | 30           |
| Dalea formosa                           | Feather Dalea             | 2' X 3'      | Deciduous              | Full Sun       | RW        | 20           |
| Dalea frutescens                        | Black Dalea               | 2' X 4'      | Deciduous              | Full Sun       | Low       | 25           |
| Dalea versicolor                        | Mountain Dalea            | 3' X 5'      | Deciduous              | Full Sun       | Low       | 25           |
| Ericameria syn. Chrysothamnus nauseosus | Chamisa, Rabbitbrush      | 5' X 5'      | Deciduous              | Full Sun       | RW        | 30           |
| Fendlera rupicola                       | Cliff Fendlerbush         | 6' X 4'      | Deciduous              | Full Sun       | Low       | 20           |
| Forsythia intermedia                    | Forsythia                 | 10' X 10'    | Deciduous              | Full Sun       | Medium    | 20           |
| Genista tinctoria                       | Summer Broom              | 2' X 4'      | Deciduous              | Full Sun       | Medium    | 15           |
| Hibiscus syriacus                       | Rose of Sharon            | 10' X 10'    | Deciduous              | Full Sun       | Medium    | 30           |
| Holodiscus dumosus                      | Rock Spirea               | 6' X 6'      | Deciduous              | Sun/Shade      | Medium    | 25           |
| Jasminum nudiflorum                     | Winter Jasmine            | 4' X 8'      | Deciduous              | Full Sun       | Low       | 25           |
| Kolkwitzia amabilis                     | Beauty Bush               | 10' X 10'    | Deciduous              | Sun/Shade      | Medium    | 30           |
| Leucophyllum frutescens                 | Texas Ranger or Ceniza    | 6' X 6'      | Semi-Evergreen         | Full Sun       | Low       | 30           |
| Leucophyllum langmaniae                 | Rio Bravo Sage            | 5' X 5'      | Deciduous              | Full Sun       | Low       | 25           |
| L. frutescens 'Compactum'               | Compact Ceniza            | 3' X 4'      | Semi-Evergreen         | Full Sun       | Low       | 20           |
| Ligustrum vulgare                       | Common Privet             | 8' X 6'      | Deciduous              | Sun/Shade      | Medium    | 20           |
| Lonicera tartarica                      | Tartarian Honeysuckle     | 6' X 6'      | Deciduous              | Sun/Shade      | High      | 0            |
| Parryella filifolia                     | Dunebroom                 | 3' X 3'      | Deciduous              | Full Sun       | RW        | 20           |
| Philadelphus cultivars                  | Mock Orange               | 10' X 10'    | Deciduous              | Sun/Shade      | Medium    | 30           |
| Philadelphus microphyllus               | Littleleaf Mock Orange    | 4' X 6'      | Deciduous              | Sun/Shade      | Medium    | 20           |
| Potentilla fruticosa                    | Shrubby Cinquefoil        | 3' X 3'      | Deciduous              | Sun/Shade      | Medium    | 15           |
| Prunus besseyi                          | Western Sand Cherry       | 4' X 4'      | Deciduous              | Full Sun       | Medium    | 15           |
| Prunus tomentosa                        | Nanking Cherry            | 6' X 6'      | Deciduous              | Full Sun       | Medium    | 25           |
| Prunus x cistena                        | Purpleleaf Plum Bush      | 6' X 6'      | Deciduous              | Full Sun       | Medium    | 20           |
| Psorothamnus scoparius                  | Broom Dalea               | 3' X 5'      | Deciduous              | Full Sun       | RW        | 25           |
| Punica spp.                             | Pomegranate               | 10' X 10'    | Deciduous              | Full Sun       | Medium    | 30           |
| Rhamnus frangula Columnaris             | Tallhedge Buckthorn       | 10' X 4'     | Deciduous              | Sun/Shade      | Medium    | 12           |
| Rhus glabra var. cismontana             | Cutleaf Sumac             | 3' X 5'      | Deciduous              | Sun/Shade      | Medium    | 20           |

| Scientific Name                   | Common Name                  | Average Size | Deciduous or Evergreen | Light Exposure | Water Use | Plant Points |
|-----------------------------------|------------------------------|--------------|------------------------|----------------|-----------|--------------|
| <i>Rhus microphylla</i>           | Littleleaf Sumac             | 8' x 9'      | Deciduous              | Full Sun       | Low       | 35           |
| <i>Rhus trilobata</i>             | Three-Leaf Sumac             | 6' X 6'      | Deciduous              | Full Sun       | Low       | 30           |
| <i>Ribes aureum</i>               | Golden Currant               | 6' X 6'      | Deciduous              | Sun/Shade      | Medium    | 20           |
| <i>Rosa foetida</i>               | Austrian Copper Rose         | 10' X 10'    | Deciduous              | Full Sun       | Medium    | 30           |
| <i>Rosa rugosa</i>                | Species Rugosa Roses         | 4' X 8'      | Deciduous              | Full Sun       | Medium    | 20           |
| <i>Rosa</i> spp.                  | Tea, Floribunda, Grandiflora | 6' X 5'      | Deciduous              | Full Sun       | Medium    | 20           |
| <i>Rosa woodsii</i>               | Woods' Rose                  | 6' X 8'      | Deciduous              | Sun/Shade      | Medium    | 25           |
| <i>Salix x exigua</i>             | Coyote Willow                | 6' X 4'      | Deciduous              | Sun/Shade      | Medium    | 15           |
| <i>Salvia greggii</i>             | Autumn or Cherry Sage        | 3' X 4'      | Deciduous              | Sun/Shade      | Low       | 20           |
| <i>Sarcobatus vermiculatus</i>    | Greasewood                   | 8' X 8'      | Deciduous              | Full Sun       | RW        | 35           |
| <i>Shepherdia argentea</i>        | Silver Buffaloberry          | 15' X 10'    | Deciduous              | Sun/Shade      | Medium    | 30           |
| <i>Symphoricarpos albus</i>       | Snowberry                    | 6' X 6'      | Deciduous              | Sun/Shade      | Medium    | 25           |
| <i>Symphoricarpos orbiculatus</i> | Coralberry                   | 6' X 6'      | Deciduous              | Sun/Shade      | Medium    | 25           |
| <i>Syringa</i> spp.               | Lilac                        | 8' X 8'      | Deciduous              | Full Sun       | Medium    | 25           |
| <i>Syringa laciniata</i>          | Cutleaf Persian Lilac        | 8' X 6'      | Deciduous              | Full Sun       | Medium    | 20           |
| <i>Syringa meyeri</i>             | Dwarf Korean Lilac           | 5' X 6'      | Deciduous              | Sun/Shade      | Medium    | 25           |
| <i>Syringa persica</i>            | Persian Lilac                | 8' X 8'      | Deciduous              | Full Sun       | Medium    | 25           |
| <i>Syringa rothomagensis</i>      | Chinese Lilac                | 8' X 8'      | Deciduous              | Sun/Shade      | Medium    | 25           |
| <i>Syringa vulgaris</i>           | Common Lilac                 | 15' X 15'    | Deciduous              | Full Sun       | Medium    | 30           |
| <i>Weigela florida</i>            | Weigela                      | 10' X 10'    | Deciduous              | Full Sun       | Medium    | 25           |

### SHRUBS, EVERGREEN

|                                 |                         |          |                |           |        |    |
|---------------------------------|-------------------------|----------|----------------|-----------|--------|----|
| <i>Abelia grandiflora</i>       | Glossy Abelia           | 7' X 7'  | Evergreen      | Sun/Shade | Medium | 25 |
| <i>Arctostaphylos pungens</i>   | Pointleaf Manzanita     | 3' X 6'  | Evergreen      | Sun/Shade | Low    | 25 |
| <i>Artemisia cana</i>           | Silver Sage             | 3' X 5'  | Evergreen      | Full Sun  | Low    | 25 |
| <i>Artemisia filifolia</i>      | Sand Sage               | 4' X 4'  | Evergreen      | Full Sun  | RW     | 25 |
| <i>Artemisia tridentata</i>     | Big Sage                | 4' X 4'  | Evergreen      | Full Sun  | Low    | 25 |
| <i>Atriplex canescens</i>       | Fourwing Saltbrush      | 3' X 5'  | Evergreen      | Full Sun  | RW     | 30 |
| <i>Atriplex confertifolia</i>   | Shadscale               | 2' X 2'  | Evergreen      | Full Sun  | RW     | 15 |
| <i>Baccharis pilularis</i>      | Dwarf Coyotebush        | 18" X 3' | Evergreen      | Sun/Shade | Low    | 15 |
| <i>Baccharis x 'Centennial'</i> | Centennial Broom        | 3' X 5'  | Evergreen      | Full Sun  | Low    | 25 |
| <i>Baccharis x 'Starns'</i>     | Thompson Broom          | 2' X 5'  | Evergreen      | Full Sun  | Low    | 25 |
| <i>Baccharis salicina</i>       | Broom Baccharis         | 8' X 8'  | Semi-Evergreen | Full Sun  | Medium | 30 |
| <i>Baccharis sarothroides</i>   | Desert Broom            | 6' X 6'  | Evergreen      | Full Sun  | Low    | 30 |
| <i>Berberis gladwynensis</i>    | William Penn Barberry   | 6' X 6'  | Evergreen      | Sun/Shade | Medium | 20 |
| <i>Berberis julianae</i>        | Wintergreen Barberry    | 5' X 5'  | Evergreen      | Full Sun  | Medium | 20 |
| <i>Berberis mentorensis</i>     | Mentor Barberry         | 7' X 7'  | Evergreen      | Sun/Shade | Medium | 25 |
| <i>Buxus</i> spp.               | Boxwood                 | 4' X 4'  | Evergreen      | Shade     | Medium | 15 |
| <i>Cercocarpus ledifolius</i>   | Curl-leaf Mtn. Mahogany | 8' X 12' | Evergreen      | Full Sun  | Low    | 30 |

# PLANT LIST

| Scientific Name   | Common Name                        | Average Size | Deciduous or Evergreen | Light Exposure | Water Use | Plant Points |
|---|------------------------------------|--------------|------------------------|----------------|-----------|--------------|
| <b>SHRUBS, EVERGREEN (continued)</b>  |                                    |              |                        |                |           |              |
| <i>Cercocarpus breviflorus</i>  | Hairy Mountain Mahogany            | 8' X 10'     | Evergreen              | Full Sun       | Low       | 30           |
| <i>Chrysactinia mexicana</i>  | Damianita                          | 2' X 2'      | Evergreen              | Full Sun       | Low       | 15           |
| <i>Cistus ladanifer</i> & <i>x purpureus</i>                                  | Crimsonspot & Purple Rockrose      | 4' X 5'      | Evergreen              | Full Sun       | Low       | 25           |
| <i>Cotoneaster buxifolius</i>   | Grayleaf Cotoneaster               | 2' X 9'      | Evergreen              | Full Sun       | Low       | 35           |
| <i>Cotoneaster congestus</i>  | Pyrenees Cotoneaster               | 3' X 3'      | Evergreen              | Sun/Shade      | Medium    | 15           |
| <i>Cotoneaster lacteus</i>  | Parney or Clusterberry Cotoneaster | 8' X 10'     | Evergreen              | Sun/Shade      | Medium    | 30           |
| <i>Cotoneaster salicifolius</i>   | Willowleaf Cotoneaster             | 6' X 10'     | Evergreen              | Sun/Shade      | Medium    | 30           |
| <i>Cytisus scoparius</i>  | Scotch Broom                       | 4' X 6'      | Evergreen              | Full Sun       | Medium    | 30           |
| <i>Elaeagnus pungens</i>  | Silverberry                        | 10' X 10'    | Evergreen              | Full Sun       | Medium    | 30           |
| <i>Ephedra species</i>  | Joint-Fir or Mormon Tea            | 2' X 5'      | Evergreen              | Full Sun       | RW        | 35           |
| <i>Ericameria laricifolia</i>   | Turpentine Bush                    | 3' X 4'      | Evergreen              | Full Sun       | Low       | 25           |
| <i>Eriogonum fasciculatum</i> v. <i>poliofolium</i>                           | Flattop Buckwheat                  | 2' X 2'      | Evergreen              | Full Sun       | Low       | 15           |
| <i>Euonymus japonica</i>  | Japanese Euonymus                  | 8' X 8'      | Evergreen              | Full Sun       | Medium    | 25           |
| <i>Euonymus klautschovius</i>   | Manhattan Euonymus                 | 6' X 6'      | Evergreen              | Sun/Shade      | Medium    | 20           |
| <i>Fallugia paradoxa</i>  | Apache Plume                       | 4' X 5'      | Evergreen              | Full Sun       | Low       | 35           |
| <i>Garrya wrightii</i>  | Wright's Silk Tassel               | 5' X 5'      | Evergreen              | Full Sun       | Low       | 30           |
| <i>Helichrysum angustifolium</i>  | Curry Plant                        | 2' X 3'      | Evergreen              | Full Sun       | Low       | 15           |
| <i>Ilex cornuta</i> 'Burfordii'   | Burford Holly                      | 8' X 8'      | Evergreen              | Shade          | Medium    | 20           |
| <i>Ilex altaclarensis</i> 'Wilsonii'  | Wilson Holly                       | 10' X 10'    | Evergreen              | Shade          | Medium    | 25           |
| <i>Juniperus shrub species</i><br>female cultivars only                       | Female Juniper Shrubs              | 1' X 4'      | Evergreen              | Full Sun       | Low       | 35           |
| <i>Krascheninnikovia</i> syn. <i>Ceratoides</i><br>syn. <i>Eurotia lanata</i> | Winterfat                          | 3' X 3'      | Evergreen              | Full Sun       | Low       | 20           |
| <i>Larrea tridentata</i>  | Creosote Bush                      | 6' X 8'      | Evergreen              | Full Sun       | Low       | 35           |
| <i>Lavandula angustifolia</i>   | English Lavender                   | 3' X 3'      | Evergreen              | Sun/Shade      | Medium    | 15           |
| <i>Lavandula x Intermedia</i> 'Grosso'  | Fat Spike Lavender                 | 2' X 2'      | Evergreen              | Sun/Shade      | Medium    | 15           |
| <i>Lavandula stoechas</i>   | Spanish Lavender                   | 3' X 3'      | Evergreen              | Full Sun       | Medium    | 10           |
| <i>Leucophyllum langmaniae</i>  | 'Lynn's Legacy' Texas sage         | 4' X 4'      | Semi-Evergreen         | Full Sun       | Low       | 25           |
| <i>Leucophyllum zygophyllum</i>   | Cimarron Rainsage                  | 4' X 4'      | Semi-Evergreen         | Full Sun       | Low       | 25           |
| <i>Mahonia aquifolium</i>   | Oregon Grape Holly                 | 6' X 6'      | Evergreen              | Sun/Shade      | Medium    | 25           |
| <i>Mahonia aquifolium</i> 'Compacta'  | Compact Oregon Grape               | 2' X 4'      | Evergreen              | Sun/Shade      | Medium    | 20           |
| <i>Mahonia</i> syn. <i>Berberis fremontii</i>                                 | Blue Algerita                      | 5' X 7'      | Evergreen              | Sun/Shade      | Low       | 30           |
| <i>Mahonia hamaetocarpa</i>   | Algerita                           | 8' X 10'     | Evergreen              | Full Sun       | Low       | 35           |
| <i>Nandina domestica</i> cultivars  | Heavenly Bamboo                    | 3' X 4'      | Evergreen              | Sun/Shade      | Medium    | 15           |
| <i>Parthenium incanum</i>   | Mariola                            | 2' X 3'      | Evergreen              | Full Sun       | RW        | 20           |
| <i>Photinia fraseri</i>   | Red Tip Photinia                   | 8' X 8'      | Evergreen              | Full Sun       | Medium    | 25           |
| <i>Photinia serrulata</i>   | Chinese Photinia                   | 10' X 10'    | Evergreen              | Full Sun       | Medium    | 25           |
| <i>Picea conica</i>   | Alberta Spruce                     | 7' X 3'      | Evergreen              | Sun/Shade      | Medium    | 12           |

| Scientific Name                        | Common Name                   | Average Size | Deciduous or Evergreen | Light Exposure | Water Use | Plant Points |
|--|-------------------------------|--------------|------------------------|----------------|-----------|--------------|
| <i>Pinus mugo mughus</i>               | Mugo Pine                     | 4' X 5'      | Evergreen              | Sun/Shade      | Low       | 25           |
| <i>Prunus caroliniana</i>              | Carolina Cherry Laurel        | 10' X 10'    | Evergreen              | Sun/Shade      | Medium    | 25           |
| <i>Purshia syn Cowania mexicana</i>    | Cliffrose                     | 8' X 8'      | Evergreen              | Full Sun       | Low       | 35           |
| <i>Purshia tridentata</i>              | Antelope Bitterbush           | 6' X 8'      | Evergreen              | Full Sun       | Low       | 35           |
| <i>Pyracantha coccinea</i>             | Firethorn                     | 10' X 10'    | Evergreen              | Sun/Shade      | Medium    | 30           |
| <i>Raphiolepis indica</i>              | Indian Hawthorn               | 3' X 4'      | Evergreen              | Sun/Shade      | Medium    | 20           |
| <i>Rhamnus californica var. ursina</i> | Coffeeberry                   | 6' X 8'      | Evergreen              | Full Sun       | Low       | 35           |
| <i>Rhus ovata</i>                      | Sugarbush                     | 10' X 10'    | Evergreen              | Full Sun       | Low       | 35           |
| <i>Rhus virens / choriophylla</i>      | Evergreen Sumac               | 8' X 8'      | Evergreen              | Full Sun       | Low       | 35           |
| <i>Rosmarinus officinalis</i>          | Upright Rosemary              | 6' X 6'      | Evergreen              | Full Sun       | Low       | 30           |
| <i>Sabal minor</i>                     | Dwarf Sabal Palm              | 3' X 3'      | Evergreen              | Shade          | Medium    | 10           |
| <i>Salvia chamaedryoides</i>           | Mexican Blue or Chihuahu Sage | 1' X 3'      | Semi-Evergreen         | Full Sun       | Low       | 15           |
| <i>Salvia dorrii</i>                   | Desert Sage                   | 2' X 3'      | Evergreen              | Full Sun       | Low       | 20           |
| <i>Salvia lavandulifolia</i>           | Lavender Sage                 | 1' X 2'      | Evergreen              | Full Sun       | Low       | 15           |
| <i>Salvia officinalis</i>              | Garden Sage                   | 2' X 2'      | Evergreen              | Full Sun       | Medium    | 10           |
| <i>Spartium junceum</i>                | Spanish Broom                 | 10' X 6'     | Evergreen              | Full Sun       | Medium    | 25           |
| <i>Vauquelinia spp.</i>                | Rosewood                      | 12' X 10'    | Evergreen              | Full Sun       | Low       | 40           |
| <i>Virburnum X burkwoodii</i>          | Burkwood Viburnum             | 6' X 5'      | Evergreen              | Shade          | Medium    | 25           |

**TREES, DECIDUOUS**

|  |                             |           |           |           |        |    |
|--|-----------------------------|-----------|-----------|-----------|--------|----|
| <i>Acer x freemanii</i>                | Freeman Maple               | 45' X 30' | Deciduous | Sun/Shade | Medium | 35 |
| <i>Acer negundo 'Sensation'</i>        | Sensation Box Elder         | 40' X 30' | Deciduous | Full Sun  | Medium | 45 |
| <i>Acer saccharum v grandidentatum</i> | Bigtooth Maple              | 25' X 25' | Deciduous | Full Sun  | Medium | 40 |
| <i>Acer tataricum ginnala</i>          | Amur Maple                  | 20' X 20' | Deciduous | Full Sun  | Medium | 30 |
| <i>Acer truncatum</i>                  | Shantung Maple              | 25' X 25' | Deciduous | Full Sun  | Medium | 35 |
| <i>Albizia julibrissin Rosea</i>       | Mimosa                      | 20' X 20' | Deciduous | Full Sun  | Medium | 45 |
| <i>Carya illinoensis</i>               | Pecan                       | 40' X 40' | Deciduous | Full Sun  | Medium | 45 |
| <i>Catalpa speciosa</i>                | Catalpa                     | 40' X 40' | Deciduous | Full Sun  | Medium | 50 |
| <i>Celtis occidentalis</i>             | Common Hackberry            | 40' X 40' | Deciduous | Full Sun  | Medium | 50 |
| <i>Celtis reticulata</i>               | Netleaf / Canyon Hackberry  | 25' X 25' | Deciduous | Full Sun  | Low    | 55 |
| <i>Cercis occidentalis</i>             | Western Redbud              | 10' X 12' | Deciduous | Sun/Shade | Medium | 40 |
| <i>Cercis mexicana</i>                 | Mexican Redbud              | 15' X 12' | Deciduous | Sun/Shade | Medium | 40 |
| <i>Cercis reniformis</i>               | Oklahoma Redbud             | 15' X 12' | Deciduous | Sun/Shade | Medium | 40 |
| <i>Chilopsis linearis</i>              | Desert Willow               | 20' X 25' | Deciduous | Full Sun  | Low    | 55 |
| <i>Chilopsis x Catalpa</i>             | Chitalpa                    | 20' X 20' | Deciduous | Full Sun  | Medium | 45 |
| <i>Cornus mas</i>                      | Cornelian Cherry            | 15' X 20' | Deciduous | Shade     | Medium | 35 |
| <i>Cotinus coggygria</i>               | Smoketree                   | 15' X 15' | Deciduous | Full Sun  | Medium | 40 |
| <i>Crataegus crus-galli Inermis</i>    | Thornless Cockspur Hawthorn | 15' X 15' | Deciduous | Sun/Shade | Medium | 35 |
| <i>Crataegus laevigata</i>             | English Hawthorn            | 20' X 20' | Deciduous | Sun/Shade | Medium | 35 |
| <i>Crataegus phaenopyrum</i>           | Washington Hawthorn         | 20' X 20' | Deciduous | Sun/Shade | Medium | 35 |

# PLANT LIST

| Scientific Name                          | Common Name                              | Average Size | Deciduous or Evergreen | Light Exposure | Water Use | Plant Points |
|--|--|--------------|------------------------|----------------|-----------|--------------|
| <b>TREES, DECIDUOUS (continued)</b>      |  |              |                        |                |           |              |
| <i>Crataegus X lavallei</i>              | Carriere Hawthorn                        | 25' X 25'    | Deciduous              | Full Sun       | Medium    | 35           |
| <i>Crataegus monogyna</i>                | Single-Seed Hawthorn                     | 30' X 8'     | Deciduous              | Full Sun       | Medium    | 30           |
| <i>Crataegus ambigua</i>                 | Russian Hawthorn                         | 20' X 20'    | Deciduous              | Sun/Shade      | Medium    | 45           |
| <i>Ficus carica</i>                      | Edible Fig                               | 12' X 15'    | Deciduous              | Full Sun       | Medium    | 40           |
| <i>Forestiera neomexicana</i>            | New Mexico Olive                         | 15' X 15'    | Deciduous              | Sun/Shade      | Medium    | 40           |
| <i>Fraxinus cuspidata</i>                | Fragrant Ash                             | 20' X 20'    | Deciduous              | Full Sun       | Medium    | 45           |
| <i>Fraxinus angustifolia oxycarpa</i>    | Claret or Raywood Ash                    | 35' X 25'    | Deciduous              | Full Sun       | Medium    | 45           |
| <i>Fraxinus pennsylvanica x velutina</i> | Fan West Ash                             | 40' X 30'    | Deciduous              | Full Sun       | Medium    | 45           |
| <i>Fraxinus texana</i>                   | Texas Ash                                | 25' X 25'    | Deciduous              | Full Sun       | Medium    | 45           |
| <i>Fraxinus velutina</i>                 | Arizona and Modesto Ash                  | 40' X 35'    | Deciduous              | Full Sun       | Medium    | 45           |
| Fruit trees                              | Fruit trees (Apple, Peach, Pear, Quince) | 25' X 25'    | Deciduous              | Full Sun       | Medium    | 40           |
| <i>Gleditsia triacanthos inermis</i>     | Thornless Honey Locust                   | 50' X 45'    | Deciduous              | Full Sun       | Medium    | 50           |
| <i>Gymnocladus dioica</i>                | Kentucky Coffee Tree                     | 40' X 30'    | Deciduous              | Full Sun       | Medium    | 50           |
| <i>Juglans major</i>                     | Arizona Walnut                           | 50' X 50'    | Deciduous              | Full Sun       | Medium    | 50           |
| <i>Juglans microcarpa</i>                | Little Walnut                            | 30' X 30'    | Deciduous              | Full Sun       | Medium    | 45           |
| <i>Juglans regia</i>                     | English Walnut                           | 60' X 60'    | Deciduous              | Full Sun       | Medium    | 40           |
| <i>Juglans regia 'Carpathian'</i>        | Carpathian Walnut                        | 20' X 20'    | Deciduous              | Full Sun       | Medium    | 40           |
| <i>Koelreuteria paniculata</i>           | Golden Rain Tree                         | 25' X 25'    | Deciduous              | Full Sun       | Medium    | 50           |
| <i>Lagerstroemia indica x fauriei</i>    | Crape Myrtle                             | 6' X 12'     | Deciduous              | Full Sun       | Medium    | 30           |
| <i>Leucaena retusa</i>                   | Golden Ball Leadtree                     | 15' X 15'    | Deciduous              | Full Sun       | Low       | 35           |
| <i>Maclura pomifera</i>                  | Osage Orange                             | 25' X 25'    | Deciduous              | Full Sun       | Medium    | 50           |
| <i>Malus cultivars</i>                   | Crabapple                                | Varies       | Deciduous              | Full Sun       | Medium    | 35           |
| <i>Melia azedarach</i>                   | Chinaberry                               | 25' X 20'    | Deciduous              | Full Sun       | Low       | 45           |
| <i>Metasequoia glyptostroboides</i>      | Dawn Redwood                             | 60' X 40'    | Deciduous              | Full Sun       | Medium    | 40           |
| <i>Parrotia persica</i>                  | Persian Parrotia                         | 25' X 25'    | Deciduous              | Full Sun       | Medium    | 40           |
| <i>Paulownia tomentosa</i>               | Empress tree                             | 30' X 30'    | Deciduous              | Sun/Shade      | Medium    | 40           |
| <i>Pistacia chinensis</i>                | Chinese Pistache                         | 60' X 60'    | Deciduous              | Full Sun       | Medium    | 55           |
| <i>Platanus acerfolia</i>                | London Plane Tree                        | 70' X 50'    | Deciduous              | Full Sun       | Medium    | 45           |
| <i>Plantanus wrightii</i>                | Arizona Sycamore                         | 60' X 70'    | Deciduous              | Full Sun       | Medium    | 45           |
| <i>Populus acuminata</i>                 | Mountain/Lanceleaf Cottonwood            | 50' X 50'    | Deciduous              | Full Sun       | Medium    | 45           |
| <i>Populus deltoides var. wislizenii</i> | Valley Cottonwood                        | 50' X 60'    | Deciduous              | Full Sun       | Medium    | 45           |
| <i>Populus fremontii</i>                 | Western Cottonwood                       | 70' X 60'    | Deciduous              | Full Sun       | Medium    | 45           |
| <i>Prosopis glandulosa</i>               | Honey Mesquite                           | 25' X 30'    | Deciduous              | Full Sun       | RW        | 55           |
| <i>Prosopis pubescens</i>                | Screwbean Mesquite                       | 20' X 20'    | Deciduous              | Full Sun       | RW        | 50           |
| <i>Prosopis torreyana</i>                | Western Honey Mesquite                   | 18' X 20'    | Deciduous              | Full Sun       | RW        | 50           |
| <i>Prosopis velutina</i>                 | Velvet Mesquite                          | 20' X 25'    | Deciduous              | Full Sun       | RW        | 50           |
| <i>Prunus americana</i>                  | American Plum                            | 20' X 20'    | Deciduous              | Sun/Shade      | Medium    | 40           |
| <i>Prunus armeniaca</i>                  | Apricot                                  | 20' X 20'    | Deciduous              | Sun/Shade      | Medium    | 40           |

| Scientific Name                                   | Common Name                           | Average Size | Deciduous or Evergreen | Light Exposure | Water Use | Plant Points |
|---|---------------------------------------|--------------|------------------------|----------------|-----------|--------------|
| <i>Prunus cerastifera</i>                         | Purpleleaf Plum                       | 20' X 20'    | Deciduous              | Full Sun       | Medium    | 40           |
| <i>Prunus virginiana</i>                          | Chokecherry                           | 20' X 20'    | Deciduous              | Full Sun       | Medium    | 35           |
| <i>Ptelea trifoliata</i>                          | Hoptree                               | 20' X 20'    | Deciduous              | Sun/Shade      | Medium    | 35           |
| <i>Pyrus</i> sp.                                  | Ornamental Pear Varieties             | 35' X 25'    | Deciduous              | Full Sun       | Medium    | 40           |
| <i>Quercus gambelii</i>                           | Gambel Oak                            | 25' X 25'    | Deciduous              | Sun/Shade      | Medium    | 45           |
| <i>Quercus gravesii</i> Chisos                    | Red Oak                               | 25' X 25'    | Deciduous              | Sun/Shade      | Medium    | 50           |
| <i>Quercus lobata</i>                             | Valley Oak                            | 45' X 30'    | Deciduous              | Full Sun       | Medium    | 45           |
| <i>Quercus macrocarpa</i>                         | Bur Oak                               | 60' X 70'    | Deciduous              | Sun/Shade      | Medium    | 50           |
| <i>Quercus muhlenbergii</i>                       | Chinquapin Oak                        | 40' X 40'    | Deciduous              | Sun/Shade      | Medium    | 50           |
| <i>Quercus oblongifolia/engelmannii</i>           | Mexican Blue / Mesa Oak               | 25' X 30'    | Deciduous              | Sun/Shade      | Medium    | 50           |
| <i>Quercus robur</i>                              | English Oak                           | 50' X 50'    | Deciduous              | Sun/Shade      | Medium    | 50           |
| <i>Quercus robur</i> 'Fastigiata'                 | Skyrocket Oak                         | 30' X 10'    | Deciduous              | Sun/Shade      | Medium    | 40           |
| <i>Quercus shumardii</i>                          | Shumard Oak                           | 60' X 60'    | Deciduous              | Sun/Shade      | Medium    | 50           |
| <i>Quercus texana</i> syn. <i>buckleyi</i>        | Texas Red Oak                         | 40' X 40'    | Deciduous              | Sun/Shade      | Medium    | 50           |
| <i>Rhamnus cathartica</i>                         | Common Buckthorn                      | 20' X 20'    | Deciduous              | Full Sun       | Medium    | 40           |
| <i>Rhamnus frangula</i> 'Asplenifolia'            | Fernleaf Buckthorn                    | 12' X 10'    | Deciduous              | Sun/Shade      | Medium    | 35           |
| <i>Rhus glabra</i>                                | Smooth Sumac                          | 12' X 15'    | Deciduous              | Sun/Shade      | Medium    | 35           |
| <i>Rhus lanceolata</i>                            | Prairie Flameleaf Sumac               | 25' X 20'    | Deciduous              | Sun/Shade      | Medium    | 40           |
| <i>Robinia x ambigua</i>                          | Idaho Locust                          | 40' X 25'    | Deciduous              | Full Sun       | Medium    | 50           |
| <i>Robinia neomexicana</i>                        | New Mexico Locust                     | 15' X 10'    | Deciduous              | Sun/Shade      | Medium    | 35           |
| <i>Robinia pseudoacacia</i>                       | Black Locust                          | 40' X 25'    | Deciduous              | Full Sun       | Medium    | 50           |
| <i>Robinia pseudoacacia</i> 'Purple Robe'         | Purple Robe Locust                    | 30' X 20'    | Deciduous              | Full Sun       | Medium    | 45           |
| <i>Salix matsudana</i> 'Navajo'                   | Globe Navajo Willow                   | 40' X 40'    | Deciduous              | Full Sun       | Medium    | 40           |
| <i>Sambucus mexicana</i>                          | Mexican Elder                         | 20' X 25'    | Deciduous              | Full Sun       | Medium    | 45           |
| <i>Sapindus drummondii</i>                        | Western Soapberry                     | 30' X 30'    | Deciduous              | Full Sun       | Low       | 55           |
| <i>Styphnolobium</i> syn <i>Sophora japonicum</i> | Japanese Pagoda Tree,<br>Scholar Tree | 35' X 35'    | Deciduous              | Sun/Shade      | Medium    | 50           |
| <i>Syringa reticulata</i>                         | Japanese Tree Lilac                   | 20' X 20'    | Deciduous              | Full Sun       | Medium    | 35           |
| <i>Taxodium distichum</i>                         | Bald Cypress                          | 50' X 20'    | Deciduous              | Sun/Shade      | Medium    | 45           |
| <i>Taxodium mucronatum</i>                        | Montezuma Cypress                     | 60' X 40'    | Deciduous              | Sun/Shade      | Medium    | 45           |
| <i>Ulmus crassifolia</i>                          | Cedar Elm                             | 40' X 40'    | Deciduous              | Full Sun       | Medium    | 50           |
| <i>Ulmus parvifolia</i>                           | Lacebark Elm                          | 40' X 40'    | Deciduous              | Full Sun       | Medium    | 50           |
| <i>Ulmus</i> 'Accolade'                           | Accolade Elm                          | 60' X 40'    | Deciduous              | Full Sun       | Medium    | 50           |
| <i>Ulmus</i> 'Allee'                              | Allee Elm                             | 45' X 30'    | Deciduous              | Full Sun       | Medium    | 45           |
| <i>Ulmus</i> 'Emerald Sunshine'                   | Emerald Sunshine Elm                  | 35' X 25'    | Deciduous              | Full Sun       | Medium    | 45           |
| <i>Ulmus</i> 'Frontier'                           | Frontier Elm                          | 40' X 30'    | Deciduous              | Full Sun       | Medium    | 45           |
| <i>Ulmus</i> 'Triumph'                            | Triumph Elm                           | 45' X 35'    | Deciduous              | Full Sun       | Medium    | 50           |
| <i>Vitex agnus-castus</i>                         | Chaste Tree                           | 20' X 20'    | Deciduous              | Full Sun       | Medium    | 45           |
| <i>Zizyphus jujuba</i>                            | Jujube or Chinese Date                | 25' X 25'    | Deciduous              | Full Sun       | Low       | 45           |

# PLANT LIST

| Scientific Name                            | Common Name                          | Average Size | Deciduous or Evergreen | Light Exposure | Water Use | Plant Points |
|--|--------------------------------------|--------------|------------------------|----------------|-----------|--------------|
| <b>TREES, EVERGREEN</b>                    |                                      |              |                        |                |           |              |
| <i>Cedrus atlantica</i>                    | Atlas Cedar                          | 75' X 50'    | Evergreen              | Full Sun       | Medium    | 50           |
| <i>Cedrus deodara</i>                      | Deodar Cedar                         | 80' X 60'    | Evergreen              | Full Sun       | Medium    | 50           |
| <i>Cedrus libani</i>                       | Cedar of Lebanon                     | 80' X 50'    | Evergreen              | Full Sun       | Medium    | 45           |
| <i>Cupressocyparis leylandii</i>           | Leyland Cypress                      | 40' X 20'    | Evergreen              | Full Sun       | Medium    | 45           |
| <i>Cupressus arizonica</i>                 | Arizona Cypress                      | 50' X 30'    | Evergreen              | Full Sun       | Medium    | 55           |
| <i>Ilex vomitoria</i>                      | Yaupon Holly                         | 15' X 15'    | Evergreen              | Sun/Shade      | Medium    | 40           |
| <i>Juniperus chinensis</i>                 | Juniper Trees, Females Only          | 25' X 20'    | Evergreen              | Full Sun       | Low       | 50           |
| <i>Juniperus deppeana</i>                  | Alligator Juniper                    | 60' X 40'    | Evergreen              | Full Sun       | Low       | 55           |
| <i>Juniperus monosperma</i>                | Oneseed Juniper                      | 15' X 15'    | Evergreen              | Full Sun       | RW        | 45           |
| <i>Juniperus scopulorum</i>                | Rocky Mountain Juniper, Females Only | 40' X 20'    | Evergreen              | Full Sun       | Low       | 50           |
| <i>Juniperus virginiana</i>                | Juniper Trees, Females Only          | 20' X 10'    | Evergreen              | Full Sun       | Low       | 40           |
| <i>Magnolia grandiflora</i>                | Southern Magnolia                    | 25' X 20'    | Evergreen              | Sun/Shade      | Medium    | 40           |
| <i>Picea abies</i>                         | Norway Spruce                        | 50' X 20'    | Evergreen              | Full Sun       | Medium    | 40           |
| <i>Picea engelmanni</i>                    | Engelmann Spruce                     | 50' X 20'    | Evergreen              | Full Sun       | Medium    | 40           |
| <i>Picea pungens</i>                       | Blue Spruce                          | 50' X 20'    | Evergreen              | Full Sun       | Medium    | 40           |
| <i>Pinus aristata</i>                      | Bristlecone Pine                     | 30' X 20'    | Evergreen              | Full Sun       | Medium    | 45           |
| <i>Pinus edulis</i>                        | Pinon Pine                           | 30' X 20'    | Evergreen              | Full Sun       | Medium    | 45           |
| <i>Pinus eldarica</i>                      | Afghan Pine                          | 40' X 18'    | Evergreen              | Full Sun       | Medium    | 50           |
| <i>Pinus flexilis</i>                      | Limber Pine                          | 30' X 20'    | Evergreen              | Full Sun       | Medium    | 45           |
| <i>Pinus heldeichii</i>                    | Bosnian Pine                         | 20' X 10'    | Evergreen              | Full Sun       | Medium    | 40           |
| <i>Pinus nigra</i>                         | Austrian Pine                        | 35' X 25'    | Evergreen              | Full Sun       | Medium    | 45           |
| <i>Pinus pinea</i>                         | Italian Stone Pine                   | 60' X 50'    | Evergreen              | Full Sun       | Medium    | 50           |
| <i>Pinus ponderosa</i>                     | Ponderosa Pine                       | 40' X 25'    | Evergreen              | Full Sun       | Medium    | 45           |
| <i>Pinus strobiformis</i>                  | Southwestern White or Border Pine    | 30' X 20'    | Evergreen              | Full Sun       | Medium    | 40           |
| <i>Pinus sylvestris</i>                    | Scotch Pine                          | 45' X 25'    | Evergreen              | Full Sun       | Medium    | 45           |
| <i>Pinus thunbergii</i>                    | Japanese Black Pine                  | 35' X 20'    | Evergreen              | Full Sun       | Medium    | 45           |
| <i>Poncirus trifoliata</i>                 | Trifoliolate Orange                  | 15' X 10'    | Evergreen              | Full Sun       | Medium    | 35           |
| <i>Pseudotsuga menziesii</i>               | Douglas Fir                          | 50' X 20'    | Evergreen              | Full Sun       | Medium    | 40           |
| <i>Quercus emoryi</i>                      | Emory Oak                            | 35' X 35'    | Evergreen              | Sun/Shade      | Medium    | 50           |
| <i>Quercus fusiformis</i>                  | Escarpment Live Oak                  | 25' X 30'    | Evergreen              | Sun/Shade      | Medium    | 50           |
| <i>Quercus grisea</i>                      | Gray Oak                             | 30' X 30'    | Evergreen              | Sun/Shade      | Low       | 55           |
| <i>Quercus suber</i>                       | Cork Oak                             | 30' X 30'    | Evergreen              | Sun/Shade      | Low       | 55           |
| <i>Quercus turbinella</i>                  | Desert or Shrub Live Oak             | 18' X 20'    | Evergreen              | Sun/Shade      | Low       | 50           |
| <i>Quercus virginiana</i>                  | Southern Live Oak                    | 35' X 40'    | Evergreen              | Sun/Shade      | Medium    | 50           |
| <i>Thuja or Platycladus species</i>        | Arborvitae                           | 15' X 12'    | Evergreen              | Full Sun       | Medium    | 45           |
| <i>Trachycarpus fortunei / wagnerianus</i> | Windmill Palm                        | 15' X 4'     | Evergreen              | Sun/Shade      | Medium    | 30           |



| Scientific Name                         | Common Name              | Average Size       | Deciduous or Evergreen | Light Exposure | Water Use | Plant Points |
|---|--------------------------|--------------------|------------------------|----------------|-----------|--------------|
| <b>VINES</b>                            |                          |                    |                        |                |           |              |
| <i>Akebia quinata</i>                   | Chocolate Vine           | Climbing X 15'     | Deciduous              | Sun/Shade      | Medium    | 25           |
| <i>Campsis radicans</i>                 | Trumpet Vine             | Climbing X 40'     | Deciduous              | Full Sun       | Medium    | 30           |
| <i>Clematis ligusticifolia</i>          | Western Virginsbower     | Climbing X 15'     | Deciduous              | Sun/Shade      | Medium    | 25           |
| <i>Euonymus fortunei colorata</i>       | Purpleleaf Wintercreeper | Climbing X 6'      | Evergreen              | Sun/Shade      | Medium    | 20           |
| <i>Glesemium sempervirens</i>           | Carolina Jessamine       | Climbing X 10'     | Evergreen              | Sun/Shade      | Medium    | 25           |
| <i>Hedera helix</i>                     | English Ivy              | Climbing X 12'     | Evergreen              | Shade          | Medium    | 25           |
| <i>Humulus neomexicanus</i>             | Hops                     | Climbing X 6'      | Deciduous              | Sun/Shade      | Medium    | 20           |
| <i>Lonicera japonica 'Purpurea'</i>     | Purpleleaf Honeysuckle   | Climbing X 12'     | Evergreen              | Sun/Shade      | Medium    | 20           |
| <i>Lonicera japonica Halliana</i>       | Hall's Honeysuckle       | Climbing X 12'     | Evergreen              | Full Sun       | Medium    | 25           |
| <i>Lonicera sempervirens</i>            | Coral Honeysuckle        | Climbing X 8'      | Deciduous              | Shade/Part Sun | Medium    | 25           |
| <i>Lonicera x heckrottii</i>            | Goldflame Honeysuckle    | Climbing X 8'      | Deciduous              | Shade/Part Sun | Medium    | 25           |
| <i>Parthenocissus inserta</i>           | Woodbine                 | Climbing X 40' 30' | Deciduous              | Sun/Shade      | Medium    | 25           |
| <i>Parthenocissus quinquefolia</i>      | Virginia Creeper         | Climbing X 40' 30' | Deciduous              | Sun/Shade      | Medium    | 25           |
| <i>Parthenocissus tricuspidata</i>      | Boston Ivy               | Climbing X 40' 30' | Deciduous              | Shade          | Medium    | 25           |
| <i>Periploca graeca</i>                 | Silkvine                 | Climbing X 40' 30' | Deciduous              | Sun/Shade      | Medium    | 25           |
| <i>Polygonum aubertii</i>               | Silver Lacevine          | Climbing X 40' 30' | Deciduous              | Full Sun       | Low       | 35           |
| <i>Rosa banksiae</i>                    | Rose Lady Banks          | Climbing X 40' 30' | Evergreen              | Sun/Shade      | Low       | 35           |
| <i>Rosa hybrid and species climbers</i> | Climbing Roses           | Climbing X 15'     | Deciduous              | Sun/Shade      | Medium    | 20           |
| <i>Vitis arizonica</i>                  | Canyon Grape             | Climbing X 20'     | Deciduous              | Sun/Shade      | Medium    | 30           |
| <i>Vitis labrusca</i>                   | American Grape           | Climbing X 30'     | Deciduous              | Full Sun       | Medium    | 30           |
| <i>Vitis vinifera</i>                   | European Grape           | Climbing X 20'     | Deciduous              | Full Sun       | Medium    | 30           |
| <i>Wisteria spp.</i>                    | Wisteria                 | Climbing X 30'     | Deciduous              | Sun/Shade      | Medium    | 30           |

# ③ STEPS TO LANDSCAPE SUCCESS!



## SERVICE

Low-maintenance landscapes are great, but there's no such thing as a "no-maintenance" irrigation system. A single broken sprinkler head flowing at 15 gallons per minute will waste 900 gallons in one hour of use. So service your system regularly, and check it often for leaks and malfunctions.



## SETTINGS

Adjust your irrigation timer by season! For turf, water by the numbers: one day per week in March, two days per week in April and May, three days per week in the summer, and ramp down in the fall.

For other landscapes, follow the watering recommendations on [505Outside.com](http://505Outside.com)



## SELECTION

Choose desert-friendly plants that thrive in our dry climate. There are literally hundreds of options to choose from, and rebates are available for replacing turf with a desert-friendly landscape.



# WHAT IS WATER WASTE?

Legally, any non-beneficial use of water (either potable or non-potable) is considered water waste. By ordinance the Water Authority can levy fees against customers who are observed wasting water. These fees appear on the customer's water bill and can result from any of the following types of water waste:

## FUGITIVE WATER

*(no malfunction)*

Flow resulting from the pumping, release or escape of water from a pipe, valve, faucet, connection, diversion, well, or any facility for the purpose of supply, transport, storage, disposal, recreation, or cleaning processes that delivers water onto adjacent property, the public right or way or an impermeable surface.

## OVERSPRAY/OVERFLOW

*(no malfunction)*

Occurs when an irrigation system delivers water onto adjacent property, the public right of way or an impermeable surface.

## MALFUNCTION

*(irrigation)*

Waste caused by sprinklers, irrigation systems or irrigation lines that are broken or otherwise in need of repair.

## MALFUNCTION

*(non-irrigation)*

Any non-irrigation-related equipment or pipe failure. Sources include plumbing and air conditioning leaks.

## OTHER

The water source is unknown or undetermined.

## TIME-OF-DAY VIOLATION

By ordinance, the use of spray irrigation is not allowed between 11 AM and 7 PM from April 1 through October 31. Spray irrigation is recommended only during the coolest hours of the day.

To learn more about the  
Water Waste Reduction Ordinance, visit [abcwua.org](http://abcwua.org)



## Photo Credits

**Thanks to the following for the use of their beautiful landscapes and photos throughout this publication:**

### Cover:

Hunter Ten Broeck

### Inside:

Hunter Ten Broeck

David Cristiani

Charles Mann

Michael Melendres

David Morris

Judith Phillips

Janet Rademacher

David Salman



**Call 842-WATR (842-9287) to:**

- Pay a bill over the phone
- Set up new service
- Get conservation rebate information
- Report a water or sewer emergency
- Report water waste



Mailing Address:

P.O. Box 568 • Albuquerque, NM 87103-0568  
City/County Government Center • One Civic Plaza NW • Albuquerque, NM 87102  
abcwua.com