



Nine new records of plants from Bhutan

Jigme WANGCHUK^{1,*}, Tsethup TSHERING¹, Dorji DORJI² and Karma WANGDI²

¹Ugyen Wangchuck Institute for Forest Research and Training, Lamai Goenpa, Chhoekhor Bumthang 32001, Bhutan

²Gomdar Beat Office, Samdrupjongkhar Territorial Forest Division, Department of Forests and Park Services, Gomdar 41204, Bhutan

Corresponding author

Jigme WANGCHUK
E-mail: jickmew@gmail.com

OPEN ACCESS

© 2023 the Korean Society of Plant Taxonomists.
This is an open-access article distributed under the terms of the Creative Commons Attribution Non-Commercial License (<http://creativecommons.org/licenses/by-nc/4.0/>) which permits unrestricted non-commercial use, distribution, and reproduction in any medium, provided the original work is properly cited.

ABSTRACT: Discoveries and new records of plants specifically provide a basis for empirical data to enable in-depth studies of the ecology, distribution, conservation, applications, and threats to such plants. However, many unexplored regions of Bhutan exist in which several plants have yet to be described and documented. Several species reported elsewhere in the Himalayan region with similar climatic conditions are likely to occur in Bhutan as well, indicating a need to corroborate their presence. To explore this, an opportunistic survey was employed, and we provide nine new records of plant species for Bhutan. Of the nine species, three belonged to the Lauraceae family, with the rest from the Aristolochiaceae, Asparagaceae, Lamiaceae, Phyllanthaceae, Sapindaceae, and Urticaceae families. This paper adds nine additional species of plants to the flora of Bhutan. We also report here ethnobotanical applications of these species, providing insight into how communities interact with environmental resources and have the potential to integrate traditional knowledge into scientific understanding, ultimately to reinforce sustainable biocultural conservation at the local level.

KEYWORDS: Bhutan, botanical expedition, Flora of Bhutan, new records, nine species

RECEIVED 13 January 2023; **REVISED** 21 March 2023; **ACCEPTED** 27 May 2023

INTRODUCTION

Bhutan is located in the biodiverse Himalayan region and is part of both the Palearctic and Indo-Malayan biogeographic realms. It has a variety of climates, ranging from subtropical to temperate to alpine, and houses an array of flora and fauna (Myers et al., 2000; Banerjee and Bandopadhyay, 2016). Much was learned about the botanical landscape during the Flora of Bhutan project which began in 1975, with detailed collections documented by Grierson and Long (1983, 1984, 1987, 1991, 1999, 2001) and Noltie (1994, 2000). This expedition had established 4523 species of angiosperm belonging to 1,416 genera and 266 families, while 22 gymnosperm species were recorded, containing 15 genera and eight families (Y. Dorji, 2010). However, these records underestimate the actual diversity since several unknown areas were not explored by botanists from the time of Griffith (1838) to Grierson and Long (2001). Additionally, certain species such as *Litsea chartacea* Hook. f., *Canarium strictum* Roxb., and *Lippia alba* (Mill.) N. E. Br. ex Britton & P. Wilson, which are expected to be found in similar climate as those in Assam, Darjeeling, Sikkim, Arunachal

Pradesh in India, and Tibet in China were accounted for in the Flora of Bhutan. This Flora of Bhutan led to the description of many new species and created the largest floral database for Bhutan between 1983 and 2001.

In recent years, botanical excursions have seen improvements due to increase access to sites. Not only have new species been described but several new records also have been reported for Bhutan. From 2009 to 2022, 19 species were described by multiple authors (Fryer and Hylmo, 2009; Kadota, 2010; Lidén, 2010; Ohba and Akiyama, 2010; Podlech, 2010; Rushforth, 2010; Sukhorukov, 2012; Wen and Shi, 2012; Yoshida and Grey-Wilson, 2012; N. Gyeltshen et al., 2017, 2020; Yoshida et al., 2017a, 2017b; C. Gyeltshen et al., 2019; P. Gyeltshen et al., 2022). In 2009, two species were described: *Cotoneaster hicksii* J. Fryer & B. Hylmö and *C. bumthangensis* J. Fryer & B. Hylmö. The following year, five more new species were added to the lists: *Aconitum bhutanobulbilliferum* Kadota, *Prunus harae* H. Ohba & S. Akiyama, *Astragalus paroensis* Podlech, *Dactylicapnos platycarpa* Lidén, and *Griffitharia karchungii* (Rushforth) Rushforth. In 2012, three more new species were discovered—*Meconopsis bhutanica* Tosh. Yoshida & Grey-Wilson, *Dysphania*

bhutanica Sukhor, and *Prunus gongshanensis* J. Wen. Four years later in 2016 only one species was discovered: *Meconopsis elongata* Tosh. Yoshida, Yangzom & D. G. Long. Three more species *Meconopsis gakyidiana* Tosh. Yoshida, Yangzom & D. G. Long, *Meconopsis merakensis* Tosh. Yoshida,

Yangzom & D. G. Long and *Roscoea megalantha* Tosh. Yoshida & Yangzom were identified as new species along with *Spathoglottis jetsuniae* Gyeltshen, Tobgyel & Dalström, a terrestrial orchid. *Chiloschista gelephuense* C. Gyeltshen & Dalström was discovered near the hot springs in Gelephu (C.

Table 1. New records of plants for Bhutan during 2019–2022

Sl. No.	Family	Species name	Reference
1	Orchidaceae	<i>Crepidium aphyllum</i> (King & Pantl.) A. N. Rao	Rubgay and Kumar (2019)
2	Lentibulariaceae	<i>Utricularia furcellata</i> Oliv.	Gyeltshen and Dema (2020)
3	Rosaceae	<i>Rhaphiolepis bengalensis</i> (Roxb.) B. B. Liu & J. Wen	Gurung et al. (2020)
4	Araceae	<i>Arisaema petiolulatum</i> Hook. F.	P. Gyeltshen et al. (2021)
5	Araceae	<i>A. anatinum</i> Brugg.	P. Gyeltshen et al. (2021)
6	Convolvulaceae	<i>Ipomoea campanulata</i> L.	Phuentsho et al. (2021)
7	Pteridoideae	<i>Pteris griffithii</i> Hook.	R. Dorji et al. (2021)
8	Poaceae	<i>Cephalostachyum latifolium</i> Munro	Tenzin et al. (2021)
9	Orchidaceae	<i>Bulbophyllum caudatum</i> Lindl.	Rubgay et al. (2021)
10	Orchidaceae	<i>Bulbophyllum thaiorum</i> J. J. Sm	Rubgay et al. (2021)
11	Orchidaceae	<i>Bulbophyllum yingjiangense</i> B. M. Wang & J. W. Zhai,	Rubgay et al. (2021)
12	Orchidaceae	<i>Habenaria reniformis</i> (D. Don) Hook. f.	Rubgay et al. (2021)
13	Orchidaceae	<i>Liparis glossula</i> Rchb. f.	Rubgay et al. (2021)
14	Orchidaceae	<i>Oberonia angustifolia</i> Lindl.	Rubgay et al. (2021)
15	Orchidaceae	<i>Peristylus aristatus</i> Lindl	Rubgay et al. (2021)
16	Orchidaceae	<i>Zeuxine agyokuana</i> Fukuy	Rubgay et al. (2021)
17	Rafflesiaceae	<i>Sapria himalayana</i> Griff.	R. Dorji et al. (2022b)
18	Vitaceae	<i>Tetrastigma planicaule</i> (Hook. F.) Gagnep.	R. Dorji et al. (2022a)
19	Acanthaceae	<i>Eranthemum erythrochilum</i> J. R. I. Wood	R. Dorji et al. (2022c)
20	Apocynaceae	<i>Hemidesmus indicus</i> (L.) R. Br.	R. Dorji et al. (2022c)
21	Aquifoliaceae	<i>Ilex umbellulata</i> (Wall.) Loes.	R. Dorji et al. (2022c)
22	Burseraceae	<i>Canarium strictum</i> Roxb.	R. Dorji et al. (2022c)
23	Ethretiaceae	<i>Ehretia acuminata</i> (DC.) R. Br.	R. Dorji et al. (2022c)
24	Ericaceae	<i>Vaccinium sikkimense</i> C. B. Clarke	R. Dorji et al. (2022c)
25	Icacinaceae	<i>Nothapodytes foetida</i> (Wight) Sleumer	R. Dorji et al. (2022c)
26	Lauraceae	<i>Machilus edulis</i> King ex Hook. Fil.	R. Dorji et al. (2022c)
27	Malvaceae	<i>Grewia asiatica</i> L.	R. Dorji et al. (2022c)
28	Malvaceae	<i>Hibiscus fragrans</i> Roxb.	R. Dorji et al. (2022c)
29	Meliaceae	<i>Cipadessa baccifera</i> (Roth) Miq.	R. Dorji et al. (2022c)
30	Phyllanthaceae	<i>Baccaurea javanica</i> (Blume) Müll. Arg.	R. Dorji et al. (2022c)
31	Rubiaceae	<i>Canthiumera glabra</i> (Blume) K. M. Wong & Mahyuni	R. Dorji et al. (2022c)
32	Salicaceae	<i>Homalium napaulense</i> (DC.) Benth.	R. Dorji et al. (2022c)
33	Sapindaceae	<i>Eurycorymbus cavaleriei</i> (H. Lévl.) Rehder & Hand.-Mazz.	R. Dorji et al. (2022c)
34	Asteraceae	<i>Acmella radicans</i> (Jacq.) R. K. Jansen	R. Dorji et al. (2022c)
35	Caryophyllaceae	<i>Silene latifolia</i> Hornem.	R. Dorji et al. (2022c)
36	Cleomaceae	<i>Cleome rutidosperma</i> DC.	R. Dorji et al. (2022c)
37	Lythraceae	<i>Cuphea carthagenensis</i> (Jacq.) J.F. Macbr.	R. Dorji et al. (2022c)
38	Begoniaceae	<i>Begonia picta</i> Sm.	P. Gyeltshen et al. (2022)
39	Begoniaceae	<i>Begonia rex</i> Putz.	P. Gyeltshen et al. (2022)
40	Begoniaceae	<i>Begonia roxburghii</i> (Miq.) A. DC.	P. Gyeltshen et al. (2022)
41	Begoniaceae	<i>Begonia xanthina</i> Hook.	P. Gyeltshen et al. (2022)

Gyeltshen et al., 2019). Two new orchid species were reported by N. Gyeltshen et al. (2020); they were *Chiloschista densiflora* Gyeltshen, C. Gyeltshen & Dalström and *C. himalaica* Tobgay, C. Gyeltshen & Dalström. The most recent discovery and addition to the Flora of Bhutan is *Begonia menchunaensis* P. Gyeltshen & M. Hughes (P. Gyeltshen et al., 2022).

In the past few years, plant enthusiasts have been set out to explore areas that have not been covered before, resulting in the establishment of several new records. This collective effort led to the discovery of 41 species and two genera from 28 different families in Bhutan, which have been added to the Flora of Bhutan between 2019 and 2022 by multiple authors (Rabgay and Kumar 2019; Gurung et al., 2020; Gyeltshen and Dema, 2020; R. Dorji et al., 2021, 2022a, 2022b, 2022c; P. Gyeltshen et al., 2021, 2022; Phuentsho et al. 2021; Rabgay et al., 2021; Tenzin et al., 2021). Table 1 presents the details of the authors who reported new records of plants.

The scientific documentation of new records or discoveries in Bhutan has been rapidly accumulated in recent years. There are several cases where the new plant specimen has been collected and deposited in herbaria, however, these materials remained unpublished. Generally, discoveries and records are reported in local media or kept within individual collections. To unveil these practices, it is essential to publish their findings on a platform that will provide the basis for future management studies. This article attempts to present new records of plant species distribution that have not been previously published in peer-reviewed articles and the Flora of Bhutan. This article includes a brief morphometric description of species, presented as an annotated checklist along with their ethnobotanical uses.

MATERIALS AND METHODS

An opportunistic survey was employed while collecting the plant specimens and photographs from the natural habitats of the tropical, subtropical, and temperate belts of Bhutan. Collection of herbarium specimens followed specific protocols, and plants were pressed. The spatial location details were recorded for each species (Fig. 1). The species are labeled and are now maintained at Ugyen Wangchuck Institute for Forest Research and Training (UWIFoRT), Lamai Goenpa Bumthang. New species record was determined mainly from the original description of each species along with illustrated identification keys. Furthermore, to confirm the species identification, vigorous reviews were conducted using the Flora of Bhutan, peer-reviewed literature from elsewhere, and consultation with

experts from the region. Additionally, various digital type specimen collections and photographs available in Royal Botanic Garden, JSTOR Global Plant, and Global Biodiversity Information Facility (GBIF) were referenced.

RESULTS AND DISCUSSION

We report here nine species of angiosperm plants that are new to the flora of Bhutan. Four of these species were found in tropical biomes along the southern boarder, Assam and the West Bengal region of India while four others were discovered in warm-broadleaf forests in the central region. Only one species was recorded from the temperate forest. Although these species were already being used by local communities for ethnobotanical purposes, their existence has not been documented in botanical expeditions before. Our thorough examination of literature and expert consultation elsewhere in Himalayan regions validates new records and lists these species as new additions to Bhutan's flora. Amongst the nine new records, four species of tree were from Lauraceae, Phyllanthaceae, Sapindaceae, and Utricaceae. Three species of shrubs were from Lamiaceae and Lauraceae, and two species of herbs were from the families Aristolochiaceae and Asparagaceae.

Aristolochiaceae

1. *Aristolochia indica* L., Sp. Pl. 960, 1753 (Fig. 2A).—TYPE: INDIA. Bengal, 1820, *N. Wallich*, 2704 (K001116840!).

Aristolochia pandurata Jacq., Pl. Rar. Hort. Schoenbr. 4: 49. t. 497, 1804.

Aristolochia lanceolata Wight, Icon. Pl. Ind. Orient. [Wight] v. t., 1858.

Aristolochia maysorensis Fisch. ex Duch., DC. Prod. 15: 479, 1864.

Aristolochia indica is a shrubby perennial climber with a woody rootstock (Kanjilal et al., 2009). Branches are slender, long, glabrous, and grooved. Leaves are fiddle-shaped to linear, alternate and simple 3.5–8 × 2–3.5 cm, ovate-lanceolate, entire and petiolate, base truncate, apex acute to acuminate, glabrous; 3–5-nerved at base; petiole 2.5 cm long. Flowers are pale green on the outer surface with a rim of the mouth dark purple color, usually fetid in odor, solitary with white tubular with axillary racemes. Axillary raceme with perianth up to 4 cm long, having inflated pale green glabrum (Das et al., 2010). Flowers bloom from June to October. Fruits are globose, dehiscent, and oblong. Seeds are many with 4–6 mm across, broadly deltoid, flat, and winged

all around.

With the addition of *A. indica*, Bhutan now has six species of *Aristolochia* (*A. griffithii* Hook. f. & Thomson ex Duch., *A. nakaoui* F. Meak., *A. cathcartii* Hook. f., *A. platanifolia* (Klotzsch) Duch., *A. tagala* Cham synonymized to *A. acuminata* Lam) (Grierson and Long, 1984). This species can be differentiated by its presence of herbaceous vine and narrow leaves while others species possess heart-shaped leaves (*A. griffithii*, *A. nakaoui*, *A. cathcartii*) and palmately lobed leaves (*A. platanifolia*).

Specimen examined: BHUTAN. Zhemgang District, Trong, Praling, along the footpath from Praling to Duenmangtshachhu (hot spring), after crossing a small stream and before reaching the first concrete resting place, 27.043691N, 90.808778E, elev. 690 m, 26 May 2022, *Tshering TT006* (UWIFoRT).

Distribution: Andaman Islands, Bangladesh, native to India (Assam, Bengal) Myanmar, Nepal, Sri Lanka, Vietnam.

Ethnobotanical uses: *Aristolochia indica* has long been used as a traditional medicine to treat various disorders. The constituent of this species has been used for medicinal purposes to treat colorea, fever, ulcers, snake bites, leprosy, bowel troubles, diarrhea, and cure skin disease (Jain and De Filippis, 1991; Pezzuto et al., 1998; Krishnaraju et al., 2005; Kanjilal et al., 2009; Dey and De, 2011).

Asparagaceae

2. *Chlorophytum tuberosum* (Roxb.) Baker., J. Linn. Soc., Bot. 15: 332, 1876 (Fig. 2B).—TYPE: NEPAL. Sunsari

District, elev. 230 m, 29 Apr 1974, *A. P. Sing & M. B., Chhetry, 17952* (KATH000684!).

Chlorophytum tuberosum is a herb grown in tropical biomes. It is about 20 cm tall with gregarious clumps. Leaves strap-shaped all arising from the base 15–30 cm long. The white flower blooms in monsoon (June–July). Petals elliptic, 6 erects stamens in yellow anthers. The fruits have three-edged capsules. There are three species (*C. khasianum* Hook. f., *C. nepalense*, and *C. arundinaceum* Baker) reported in the Flora of Bhutan which are members of the *Chlorophytum* genus (Noltie, 1994). With the *C. tuberosum* reported here, four species of the genus *Chlorophytum* are added to the Flora of Bhutan. This species is closely related to *C. khasianum* (accepted synonym *C. nepalense* (Lindl.) Baker) by having long narrow leaves and basal flowers but differs in the shape and size of the tubers and color of flowers. Latter species have larger and elongated tubers when compared and their flowers are yellowish-green in color.

Specimen examined: BHUTAN. Sarpang District, Singye, Phipsoo, along the foot trail and bank of the stream about 2.6 km before reaching Phipsoo Range Office or Army Out Post from Themba, 26.753669N, 90105782E, elev. 206 m, 10 Jan 2021, *Tshering TT001* (UWIFoRT).

Distribution: The native range of this species is Nigeria to Eritrea and Tanzania, Central & South India to Myanmar.

Ethnobotanical uses: The dried bulbs and leaves are pounded into flour for bread. Roots have been used as an aphrodisiac in ayurvedic medicine and a lotion is extracted

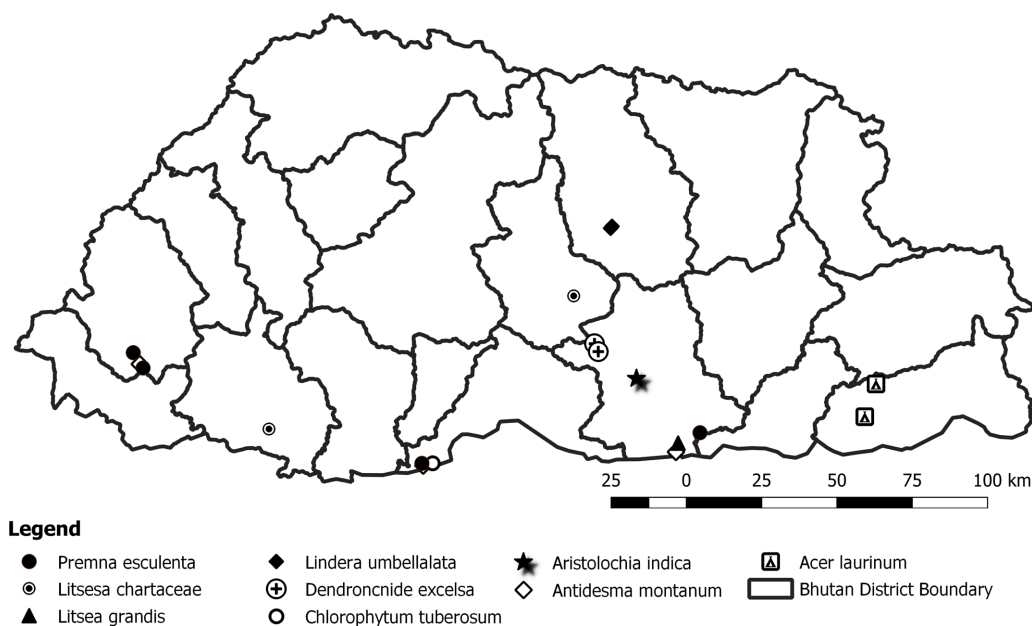


Fig. 1. Spatial locations of new records of plants in Bhutan.

from the tuber and used to treat guinea-worm (Patil and Deokule, 2010).

Lamiaceae

3. *Premna esculenta* Roxb., Hort Bengal. 46, 1814 (Fig. 2C).—TYPE: INDIA. Buxa Bengal, 2 Feb 1979, *J. S. Gamble* 6648 (holotype: K000882625!).

Gumira esculenta (Roxb.) Kuntze, Revis. Gen. Pl. (1891).

Premna esculenta is a shrub with hairless short-stemmed, branches slender. Leaves simple, decussate-opposite, deciduous, base acute, margin crenate, apex acuminate, dark green, generally glabrous above while slightly paler yellowish pubescent beneath when young. Inflorescence composed of 4–8 opposite cymes, pubescent, quadrangular peduncles 1–2 cm long, bracts linear ca. 3–4 mm long. Flowers bisexual is borne in leaf axils with greenish-yellow or cream white, pedicels ca. 3 mm long, calyx campanulate 4–5 lobed, corolla funnel-shaped, 4 subequal lobed, densely pubescent at the throat, didynamous, epipetalous, filament glabrous and filiform, anthers versatile with 2 locules. Fruits drupaceous, obovoid about 3 mm in diameter, purple, and smooth. Flowers in February to April. Of the eight species of *Premna* (*P. interrupta* Wall. ex Schauer, *P. bracteata* Wall. ex C. B. Clarke,

P. scandens Roxb., *P. bengalensis* C. B. Clarke, *P. barbata* Wall. ex Schauer, *P. mollissima* Roth, *P. lucidula* Kurz accepted synonyms *P. serratifolia* L., *P. herbacea* Roxb.) reported by Grierson and Long (1999) in the Flora of Bhutan, *P. herbacea* and *P. lucidula* were reported from elsewhere Darjeeling, Sikkim and Assam in India. Including *P. esculenta*, seven species established their occurrences in Bhutan under the genus *Premna*. Often *P. esculenta* is confused with *P. serratifolia* however, the latter can be differentiated by longer and narrower leaves typically serrated along the edges.

Specimens examined: BHUTAN. Sarpang District, Singye, Phipsoo, about 500 m upstream of Army Out Post, 26.754347N, 90.104606E, elev. 206 m, 10 Jan 2021, *Tshering*, TT003 (UWIFoRT); Zhemgang District, Ngangla, Yumdang, 26.864325N 91.019734E, elev. 89 m, 21 Apr 2023; Haa District, Rangtse, along the highway connecting Samtse and Haa, 27.078660N 89.170416E, elev. 826 m, 7 May 2023 and at Gakiling near Amochhu bridge, 27.129368N 89.137799E, elev. 771 m, 5 May 2023, *Tshering* (UWIFoRT).

Distribution: India (Andhra Pradesh, Assam, Manipur, Mizoram, Tamil Nadu, Tripura, West Bengal), Bangladesh, Myanmar, Thailand.

Ethnobotanical uses: The ethanolic extract from this plant has potential compounds for the treatment of liver, cardiovascular

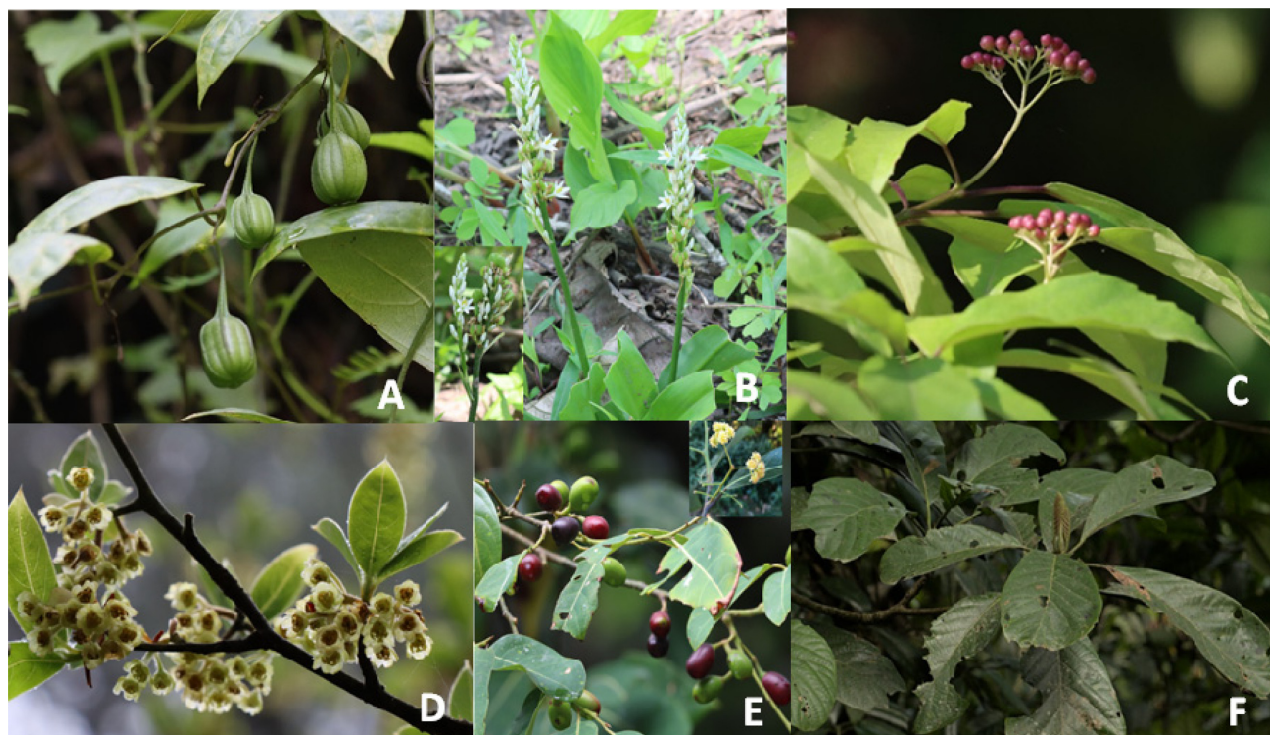


Fig. 2. New records of plants for Bhutan (1). **A.** *Aristolochia indica* Linn (Aristolochiaceae). **B.** *Chlorophytum tuberosum* (Roxb.) (Asparagaceae). **C.** *Premna esculenta* Roxb (Lamiaceae). **D.** *Lindera umbellata* Thunb (Lauraceae). **E.** *Litsea chartacea* (Wall. ex Nees) (Lauraceae). **F.** *Litsea grandis* (Wall. ex Nees) (Lauraceae)

and inflammatory disorders. Traditionally, the people of Bangladesh utilize it for a variety of ethnopharmacological purposes including the treatment of gout, arthritis, wound healing, colds, cough, headache, jaundice, lipoma, and edema (Mahmud et al., 2012).

Lauraceae

4. *Lindera umbellata* Thunb., Fl. Jap. (Thunberg) 145, t. 21, 1784 (Fig. 2D)); *Benzoin umbellatum* (Thunb.) Kuntze, Revis. Gen. 2: 569, 1891.—TYPE: JAPAN. Honshu, 29 Apr 1914, E. H. Wilson, 6591 (K000815629).

Benzoin thunbergii Siebold & Zucc., Abh. Math.-Phys. Cl. Königl. Bayer. Akad. Wiss 4(3): 204, 1846; *Lindera thunbergii* (Siebold & Zucc.) Makino., Bot. Mag. (Tokyo) 14: 184, 1900.

Lindera hypoglauca Maxim., Bull. Acad. Imp. Sci. Saint-Pétersbourg 12: 71, 1868; *Benzoin hypoglaucum* (Maxim.) Rehder., Standard Cycl. Hort. 1: 487, 1914.

Lindera obtusa Franch. & Sav., Enum. Pl. Jap. 2: 483, 1878; *Benzoin obtusum* (Franch. & Sav.) Kuntze., Revis. Gen. Pl. 2: 569, 1891.

Lindera umbellata is a deciduous shrub spicebush. Height 2 to 6 m, bark color green on young, and grey on mature trees. The leaf is hairless dark green, typically narrow-oblong to ovate-oblong at the top, acuminate, with leaf length 5–10 cm, width 2–5 cm, and pinnately veined. Flowers and leaf development occur March–April at the same time. In spring usually, six-petaled flowers are pale yellow-green, and translucent. The leaf appears yellow and small ripen fruit to black in September–October. Including the record of *L. umbellata*, Bhutan has a record of 10 species with the genus *Lindera* (*L. heterophylla* Meisn., *L. neesiana* Kurz, *L. pulcherrima* (Nees) Benth. ex Hook. f., *L. melastomacea* Fern.-Vill., *L. bootanica* Meisn., *L. assamica* (Meisn.) Kurz, *L. latifolia* Hook. f., *L. nacusua* (D. Don) Merr. and *L. hamiltonii* Kosterm.). Amongst these, one of the closest species to *L. umbellata* is *L. neesiana* as both species share morphological similarities such as deciduous growth habits, branching patterns, and fruit characters, however, the former has more ovate to elliptic leaves while the latter has more oblong to lanceolate.

Distribution: Japan, China, United Kingdom.

Specimen examined: BHUTAN. Bumthang District, Chhoekhor, Lamai Goenpa, above and below farm road heading to Tongkhang and old forest road and foot trail that led to Tharpaling Monastery, 27.541511N, 90.722844E, elev. 2,800 m, 12 Dec 2022, *Tshering TT005* (UWIFoRT).

Ethnobotanical uses: It possesses aromatic components

in its twigs and leaves. The entire tree has a volatile aroma because it contains terpineol and linalool. In Japan, branches have been used for indoor decorations and to produce shavings for aromatic baths. Oil extracted from leaves and fruits contain terpene, alcohol esters, and linalool are the most abundant and have been used traditionally as a medicine for neuralgia, stiff neck, and back pain. The fruit, branches, and leaves are also used to make tea (Maeda et al., 2011).

5. *Litsea chartacea* (Wall. ex Nees) Hook. f., Fl. Brit. India [J. D. Hooker] 5(13): 170, 1886 (Fig. 2E); *Tetranthera chartacea* Wall. ex Nees., Pl. Asiat. Rar. (Wallich). 2: 67, 1831; *Malapoenna chartacea* (Wall. ex Nees) Kuntze., Revis. Gen. Pl. 2: 572, 1891.—TYPE: INDIA. Sikkim, Rishap, elev. 1,676 m, Oct 1877, *G.King 5162* (K000357516!).

Litsea chartacea is an evergreen tree up to 8 m in height. Usually, twigs are dark, often reddish brown, and slightly ridged. Leaves elliptic, 8–16 × 2.5–6.5 cm, base cuneate, apex acute to acuminate, underside glabrous, and minutely pubescent. Petioles 1–1.5 cm, umbel buds 1–5 with 4–6 mm in diameter densely arranged. Male umbels 5–7 flowers, pedicels ca. 1 mm, sepal oblong, 2.5 mm, stamen 4–9 mm. Inflorescences 1.5 cm long with up to 4 fruits, peduncles 12 mm, pedicels 15 mm. Flowers from May–June, and fruits from October (Flora of Nepal, 2023). This species is more closely allied to *Litsea laeta* (Nees) Trimen, but comparatively the leaves of *L. chartacea* are oval-shaped while the leaves of *L. laeta* are elliptical. The record of this species ascertains its distribution in Bhutan which was projected in the Flora of Bhutan (Grierson and Long, 1984).

Distribution: India (Arunachal Pradesh, Assam, Meghalaya, and Sikkim), Nepal, Yunnan in China, and Vietnam (Michael, 2023).

Specimens examined: BHUTAN. Trongsa District, Langthel, Khoshala, below and above the highway connecting Trongsa and Zhemgang District, 27.317512N, 90.600423E, elev. 1,530 m, 27 Nov 2022, *Tshering TT008* (UWIFoRT); Zhemgang District, Dakphai, grown along with *Schima wallichii* (DC.) above and below the highway; at Khomshar, grown along with *Alnus nepalensis* D. Don; Chhukha District, Arekha, Sinchekha, 26.876627N 89.588415E, elev. 1246 m, *Tshering* (UWIFoRT). Generally, this species occurs in a warm-broadleaf forest.

Ethnobotanical uses: There are no specific ethnobotanical uses of this species documented. However, in general *Litsea* species are quite popular for essential oils steamed from the ripped fruits. The oil has incredibly effective cleansing properties to the skin with soothing aroma.

6. *Litsea grandis* (Nees) Hook. f., Fl. Brit. India [J. D. Hooker] 5(13): 162, 1886 (Fig. 2F); *Polyadenia grandis* Nees, Pl. Asiat. Rar. (Wallich). 2: 62, 1831; *Tetranthera grandis* (Nees) Wall. ex Meisn., Prodr. 15: 188, 1864; *Malapoenna grandis* (Nees) Kuntze, Revis. Gen. Pl. 2: 572, 1891.—TYPE: PHILIPPINES. Gatubig River, Samar, Feb 2016, *M. Sablaya*, 107 (K000815245!).

Litsea grandis is a mid-canopy tree up to 34 m tall with about 80 cm in diameter. Leaves simple, alternate, pinnately veined with dense hairs, sometimes whitish. Flowers white-yellow ca. 14 mm in diameter. Fruits ca. 8 mm usually red placed on enlarged flower capsules. Found in undisturbed tropical biome forests up to an elevation of 800 m, usually grown on hillsides and ridges with sandy to clay soil. There are 12 species belonging to the genus *Litsea* (*L. sericea* (Wall. ex Nees) Hook. f., *L. kingii* Hook. f., *L. cubeba* (Lour.) Pers., *L. salicifolia* (Roxb. ex Nees) Hook. f., *L. laeta* (Nees) Trimen, *L. elongata* (Nees) Hook. f., *L. monopetala* (Roxb.) Pers., *L. nervosa* (Meisn.) Grierson & D. G. Long., *L. glutinosa* (Lour.) C. B. Rob., *L. panamanja* (Buch.-Ham. ex Nees) Hook. f., *L. albescens* (Hook. f.) D. G. Long, *L. nitida* (Roxb. ex Nees) Hook. f.) in Bhutan (Grierson and Long, 1984), and now with two additional species, the number has grown up to 15 species. *L. grandis* is closely related to *L. glutinosa* in terms of leaves, flowers, colors, and fruits. They can be differentiated by slightly thicker and leathery leaves than those of *L. glutinosa*. In addition, the leaf margin of *L. glutinosa* is typically flat while the other is slightly rolled under.

Specimen examined: BHUTAN. Zhemgang District, Panbang to Mathanguri at the bank of Mangdechhu and Drangmechhu river confluences, usually grown on sandy soil, 26.830401N, 90.947198E, elev. 122 m, *Tshering*, TT001 (UWIFoRT).

Distribution: Indo-China, Burma, Thailand, Peninsular Malaysia, Sumatra, Java, Lesser Sunda Islands, Borneo (throughout the island), Philippines, Celebes, Moluccas, New Guinea.

Ethnobotanical uses: Though it has an unpleasant smell it is used for planks, furniture, and carvings. Oil extracted from the seed is used to make hair cream.

Phyllanthaceae

7. *Antidesma montanum* Blume, Bijdr. Fl. Ned. Ind. 17: 1124, 1827 (Fig. 3A).—TYPE: CHINA. Kwangtung Province, 7 Aug 1887, *C. Ford* 258 (Holotype: K000061454!).

Antidesma leptocladum Tul., Ann. Sci. Nat., Bot. Sér. 3, 15: 199, 1851.

Antidesma menasu (Tul.) Müll. Arg., DC. Prodr. 15: 257, 1866.

Myrica darrisii H. Lév., Repert. Spec. Nov. Regni Veg. 12: 537, 1913.

Antidesma discolor Airy Shaw, Addit. Ser. 8: 212, 1980.

Antidesma montanum is commonly known as a mountain currant tree. Leaves simple, alternate, distichous, stipules in pairs, linear-lanceolate, pubescent, petiole 0.25–0.7 (–1.2) cm long, lamina 8–22 × 2.5–7.7 cm, usually oblong to elliptic or oblanceolate, apex gradually acuminate with mucronate tip, base acute to rounded or cuneate, margin entire, chartaceous, glabrous except on midrib; secondary nerves prominent beneath, 5–9 pairs, ascending; tertiary nerves broadly reticulate. Inflorescence axillary or terminal raceme, flowers unisexual, dioecious, clusters of flowers in males distant than in females. Fruits drupe, elliptic, somewhat oblique, turning red. Including the present new record of *A. montanum*, three species of the genus *Antidesma* (*A. acidum* Retz., *A. acuminatum* Wight) are locally known from Bhutan (Grierson and Long, 1987). Both *A. montanum* and *A. acidum* share similar habitats, leaves, flowers, and fruits; nevertheless, the former can be distinguished by a leathery leaf texture, and purple or red fruits, whereas the latter has thinner, more delicate leaves and greenish-yellow fruits.

Distribution: Native to Andaman Island, India (Assam), Bangladesh, Borneo, Cambodia, China, Jawa, Laos, Lesser Sunda Island, Malaya, Maluku, Myanmar, Nansei-Shoto, New Guinea, Nicobar Island, Philippines, Australia, Sri Lanka, Sulawesi, Sumatera, Taiwan, Thailand, Tibet, Vietnam.

Specimens examined: BHUTAN. Sarpang District, Singye, Phipsoo, 10 Jan 2021, 26.753669N, 90.105782E, elev. 206 m, *Tshering*, TT004 (UWIFoRT); Haa District, Sombaykha, Rangtseney, 27.0915242N 89.15937139E, elev. 751 m; Zhemgang District, Manas, Hatilaura, 26.800535N 90.939831E, elev. 150 m, *Tshering* (UWIFoRT).

Ethnobotanical uses: Fruits and leaves are utilized locally for food and traditional medicine. The leaf extracts are applied for diabetic therapy, anti-inflammatory effect to treat eye diseases and relieve chest pain. It is also used against headaches, and thrush in children, removing kidney stones, and skin disease. Tea from the leaves is used as a tonic for mothers after giving birth and applied to ulcers and pains. The roots are used to treat measles, chickenpox, malaria, and stomach ache.

Sapindaceae

8. *Acer laurinum* Hassk. Tijdschr. Natuurl. Gesch. Physiol. 10: 138, 1843 (Fig. 3B).—TYPE: THAILAND. Dai Kar (Intanon) Pah Ageam Nath peak, elev. 2,070 m, *H. B. G. Garrett* 77 (Holotype: K000640927!).

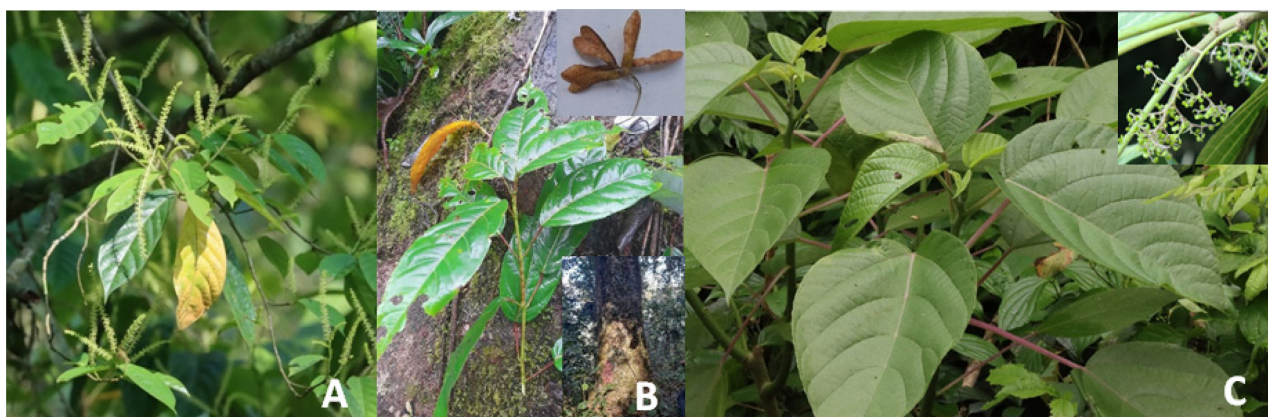


Fig. 3. New records of plants for Bhutan (2). **A.** *Antidesma montanum* Blume (Phyllanthaceae). **B.** *Acer laurinum* Hassk (Aceraceae). **C.** *Dendrocnide excelsa* (Urticaceae).

Acer cassiifolium Blume, Rumphia, 3: 193, t. 167. B, f. 2, 1849.

Acer curranii Merr, Philipp. J. Sci. C 4: 285, 1909.

Acer garrettii Craib, Bull. Misc. Inform. Kew 1920(9): 301, 1920.

Acer decandrum Merr., Lingnan Sci. J. 11: 47, 1932.

Acer chionophyllum Merr, Brittonia 4: 109, 1941.

Acer jingdongense T. Z. Hsu, Acta Phytotax. Sin., 21: 339, 1983.

Acer laurinum is a tall deciduous tree that may grow up to 48 m tall, with grey bark and green to glaucous or purple glabrous branchlets (Irwanto and Irsyam, 2021). Leaves simple, oblong to elliptic or lanceolate, upper surface dark glossy green, lower surface glaucous, white or light bluish grey, five to six lateral veins on each side of the midrib, margins entire or remotely serrate, apex acuminate; petiole 1.75–10 cm long glabrous green (Irwanto and Irsyam, 2021). The inflorescence is lateral and corymbose or paniculate with unisexual flowers; the peduncle is 5–35 mm long, and the pedicels are 4–17 mm long and 2.5–10 cm long. Flowers yellowish, 5-merous, staminate flowers on separate plants; sepals ovate, 0.2–0.3 cm long, petals shorter, stamens 8–12, inserted into the nectar disc. Calyx 5, free, overlapping in the bud, 2.5–3 mm long. Corolla 5, free, white, 1.5–2.5 mm long. Stamens 4–8 whorl, connected on the disk; filament 5 mm long in male flowers, and 2.2 mm long in female flowers, white, glabrous; anther 0.75 mm long; mericarps 2, 8–13 mm long, ovate; wings erect, 4–7 × 1–2.5 cm, asymmetrically obovate, hairy (Bloembergen, 1948). Prior to this discovery of *A. laurinum*, Bhutan was known to have 11 species (*A. Oblongum* Wall. ex DC, *A. hookeri* Miq., *A. sikkimense* Miq., *A. stachyophyllum* Hiern, *A. taronense* Hand.-Mazz., *A. thomsonii* Miq., *A. cappadocicum* Gled., *A. campbellii* Hook. f. & Thomson ex Hiern, *A. caudatum* Wall., *A. pectinatum*

Wall. ex D. Don and *A. sterculiaceum* Wall.) of the genus *Acer* (Grierson and Long, 1991).

Specimen examined: BHUTAN. Samdrupjongkhar District, Gomdar, Serchenmo, grown at the place called Tabgangyoe with associated trees *Michelina champacca* L., *Beilschmiedia* Nees., 91.567106N, 26.917322E, elev. 1,662 m, 21 Dec 2022; Gomdar, Bazorphu, 27.025914N, 91.604356E, elev. 1,824 m, Dorji et al., D001 (UWIFoRT).

Distribution: Myanmar, Borneo, Cambodia, China, India, Indonesia, Laos, Malaysia, Philippines, Thailand, Vietnam, Nepal, Singapore, Sumatra, Java, Timur, Sulawesi (Chan et al., 2020; Irwanto and Irsyam, 2021).

Ethnobotanical uses: A tree is one of the integral raw materials for the construction of houses and furniture in the localities of Assam and Indonesia (Hakim and Miyakawa, 2013), which is consistent with the uses found in Bhutan.

Urticaceae

9. *Dendrocnide excelsa* (Wedd.) Chew., Gard. Bull. Singapore, 21: 203, 1965 (Fig. 3C); *Ureia excelsa* Wedd., Ann. Sci. Nat. Bot. sér. 4. 1: 178, 1854.—TYPE: AUSTRALIA. New South Wales, May 1824, *A. Cunningham* s.n. (K000675699!).

Ureia rotundifolia Wedd., Ann. Sci. Nat. Bot. sér. 4, 1: 177, 1854.

Laportea gigas Wedd., Monog. Urtic. 129, t. 3, 1856; *Urticastrum gigas* (Wedd.) Kuntze., Rev. Gen. Pl. 2: 635, 1891.

Dendrocnide excelsa commonly known as a giant stinging tree is an endemic plant to Eastern Australia, usually found in the rainforest. It is a medium to large-size tree sometimes up to 40 m in height with fluted/flanged trunks (Floyd, 1989).

Leaves are simple, alternate, and margins regularly toothed to almost entire with dull green lamina broad-ovate, usually 10–25 cm long, 7–20 cm wide. Deeply cordate at the base often with the two lobes overlapping, usually covered with firm stinging hairs eaten by insects and mammals. Inflorescences unisexual, panicles to 12 cm long. Achene ca. 2 mm long, warty, pedicel to 5 mm long, and very fleshy. Yellow-green flowers appear from November to April while the matured purple or blackish nut attached to a whitish stalk is apparent from March–August. In Bhutan, *Dendrocnide sinuta* (Blume) Chew is the only species belonging to the genus *Dendrocnide* that has been documented (Grierson, and Long, 1983). *D. excelsa* can be distinguished by its larger, heart-shaped leaves, as opposed to *D. sinuta* which has smaller and more elongated leaves.

Distribution: Australia, Southeast Asia, and Northeast India.

Specimen examined: BHUTAN. Zhemgang District, Trong, Bermo, about 3.5 km upstream of Tingtibe at Botanical Park, both above and below the highway, 27.159187N, 90.669469E, elev. 575 m, 20 Nov 2022, *Tshering TT007* (UWIFoRT).

Ethnobotanical uses: *Dendrocnide excelsa* endemic to Australia is known as a giant stinging tree (Floyd, 1989) and is also a concern for the locality due to its constituent of venomous hairs. Although stinging hairs cause an intense persistent sting, the flesh is edible after removing the stinging hairs. The sting of this plant when comes into contact with skin, hairs penetrate through soft tissues causing severe tingling sensation which can last sometimes for 24 hours or even months. It may be possible to relieve pain by wetting exuded water of its own and pulling off the sting.

ORCID: Jigme WANGCHUK <https://orcid.org/0000-0003-3503-4369>; Tsethup TSHERING <https://orcid.org/0000-0003-1306-2377>; Dorji DORJI <https://orcid.org/0000-0003-3480-3541>; Karma WANGDI <https://orcid.org/0009-0001-1763-1883>

ACKNOWLEDGMENTS

We would like to express our deep appreciation to the management of Ugyen Wangchuck Institute for Forest Research and Training (UWIFoRT) for constant guidance, and support in setting up this data. We would also like to thank the Department of Forest and Park Services for facilitating forestry officials from respective fields to help with data collection. Lastly, we would like to sincerely thank the anonymous reviewers for their invaluable comments that improved our content immensely.

CONFLICTS OF INTEREST

The authors declare that there are no conflicts of interest.

LITERATURE CITED

- Banerjee, A. and R. Bandopadhyay. 2016. Biodiversity hotspot of Bhutan and its sustainability. *Current Science* 110: 521–527.
- Bloembergen, S. 1948. Aceraceae. *In* Flora Malesiana, Ser. 1, Seed Plants, Vol. 4, Pt. 1. van Steenis, C. G. G. J. (ed.), Noordhoff-Kolff N.V., Djakarta. Pp. 3–4, 592, Fig. 1, 2.
- Chan, P. J., Y. Y. Ting, N. E. Rahman, R. Chong, W. N. Lam and K. Y. Chong. 2020. Notes on *Acer laurinum* (Sapindaceae) in freshwater swamp forest in Singapore. *Gardens' Bulletin Singapore* 72: 165–172.
- Das, R., A. Kausik and T. K. Pal. 2010. Anti-inflammatory activity study of antidote *Aristolochia indica* to the venom of *Heteropneustes fossilis* in rats. *Journal of Chemical and Pharmaceutical Research* 2: 554–562.
- Dey, A. and J. N. De. 2011. *Aristolochia indica* L.: A review. *Asian Journal of Plant Sciences* 10: 108–116.
- Dorji, R., S. Dema, M. P. Nirola and C. Gyeltshen. 2021. The first record of the rare fern *Pteris griffithii* (Polypodiales: Pteridaceae: Pteridoideae) in the Bhutan Himalayas. *Korean Journal of Plant Taxonomy* 52: 24–28.
- Dorji, R., Gyeltshen, Phuntsho and A. Trias-Blasi. 2022a. *Tetrastigma planicaule* (Vitaceae): a new record for Bhutan. *Journal of the Indian Association for Angiosperm and Taxonomy* 32: 120–123.
- Dorji, R., P. Phuntsho, U. Dechen, G. Gyeltshen, T. Samdrup, K. Dorji, R. B. Powrel, P. Dorji, K. P. Dhimal and D. G. Long. 2022b. Discovery, distribution and conservation of the rare parasitic plant *Sapria himalayana* (Rafflesiaceae) in Bhutan. *Curtis's Botanical Magazine* 39: 541–554.
- Dorji, R., P. Phuntsho, K. Dorji, S. Tshewang, P. Wangdi, K. Tobgay, N. Gyeltshen and C. Gyeltshen. 2022c. Nineteen new records of plant species including two new genera recorded from the Bhutan Himalayas. *Korean Journal of Plant Taxonomy* 52: 173–183.
- Dorji, Y. 2010. A Red Data List for the Flowering Plants of Bhutan. Kuensel Corporation, Thimphu, 179 pp.
- Flora of Nepal. 2023. *Litsea chartacea* (Lauraceae). Online flora. Retrieved on Jan. 1, 2023, available from <http://www.floraof-nepal.org/onlineflora?wildcard=14438>.
- Floyd, A. G. 1989. Rainforest Trees of Mainland Southeastern Australia. Inkata Press, Melbourne, 420 pp.
- Fryer, J. and B. Hylmo. 2009. *Cotoneasters: Comprehensive Guide* 308 (159; pl. 89).
- Grierson, A. J. C. and D. G. Long. 1983. *Flora of Bhutan: Includ-*

- ing a Record of Plants from Sikkim, Vol. I, Part I. Royal Botanic Garden, Edinburgh, for the Overseas Development Administration, Eland House, Stag Place, London, and the Royal Government of Bhutan, Thimphu, 426 pp.
- Grierson, A. J. C. and D. G. Long. 1984. Flora of Bhutan: Including a Record of Plants from Sikkim, Vol. I, Part II. Royal Botanic Garden, Edinburgh, for the Overseas Development Administration, Eland House, Stag Place, London, and the Royal Government of Bhutan, Thimphu, 274 pp.
- Grierson, A. J. C. and D. G. Long. 1987. Flora of Bhutan: Including a Record of Plants from Sikkim, Vol. I, Part III. Royal Botanic Garden, Edinburgh, for the Overseas Development Administration, Eland House, Stag Place, London, and Royal Government of Bhutan, Thimphu, 368 pp.
- Grierson, A. J. C. and D. G. Long. 1991. Flora of Bhutan: Including a Record of Plants from Sikkim, Vol. II, Part I. Royal Botanic Garden, Edinburgh, for the Overseas Development Administration, Eland House, Stag Place, London, and the Royal Government of Bhutan, Thimphu, 432 pp.
- Grierson, A. J. C. and D. G. Long. 1999. Flora of Bhutan: Including a Record of Plants from Sikkim and Darjeeling, Vol. II, Part II. Royal Botanic Garden, Edinburgh, Royal Government of Bhutan, Thimphu, 607 pp.
- Grierson, A. J. C. and D. G. Long. 2001. Flora of Bhutan: Including a Record of Plants from Sikkim, Vol. II, Part III. Royal Botanic Garden, Edinburgh, for the Overseas Development Administration, Eland House, Stag Place, London, and the Royal Government of Bhutan, Thimphu, 641 pp.
- Gurung, D. B., P. Tobgay, T. Dendup, S. Subba, W. Blon, Phuntsho, R. Dorji and K. Dorji. 2020. *Rhaphiolepis bengalensis* (Roxb.) B.B. Liu & J. Wen: A new record of plant to Bhutan. *Bhutan Journal of Natural Resources & Development* 7: 91–93.
- Gyeltshen, C., S. Dalström, N. Gyeltshen and K. Tobgay. 2019. A new spotted *Chiloschista* (Orchidaceae: Aeridinae) from Bhutan. *Lankesteriana* 19: 23–29.
- Gyeltshen, C., K. Tobgay, N. Gyeltshen, T. Dorji and S. Dema. 2018. New species discoveries and records in Bhutan Himalaya. *Biodiversität und Naturlausstattung im Himalaya* 6: 59–82.
- Gyeltshen, N., C. Gyeltshen, K. Tobgay, S. Dalström, D. B. Gurung, N. Gyeltshen and B. B. Ghalley. 2020. Two new spotted *Chiloschista* species (Orchidaceae: Aeridinae) from Bhutan. *Lankesteriana* 20: 281–299.
- Gyeltshen, N., K. Tobgyel and S. Dalström. 2017. A new and striking *Spathoglottis* (Orchidaceae: Collabiinae), honoring Her Majesty the Queen of Bhutan. *Lankesteriana* 17: 395–401.
- Gyeltshen, P. and S. Dema. 2020. *Utricularis furcellata* (Lentibulariaceae): A new record to Bhutan. *Bhutan Journal of Natural Resources & Development* 7: 51–54.
- Gyeltshen, P., M. Hughes, P. Zangpo, S. Jamtsho, T. Phuntsho, T. Choden, C. La and T. Wangchuk. 2022. One new species and four new records of *Begonia* (Begoniaceae) from Bhutan. *Edinburgh Journal of Botany* 1922: 1–18.
- Gyeltshen, P., D. Tshering and P. Phuentsho. 2021. Description of *Arisaema* (Araceae) found in Bhutan and new additions to the Flora of Bhutan. *Bhutan Journal of Natural Resources & Development* 8: 12–20.
- Hakim, L. and H. Miyakawa. 2013. Plant trees species for restoration program in Ranupani, Bromo Tengger Semeru National Park Indonesia. *Biodiversity Journal* 4: 387–394.
- Hossain, J. 2012. Study on Medicinal Plant: *Premna esculenta* Roxb. (Family: Lamiaceae): Phytochemical, Pharmacological and Toxicological Aspects. LAP LAMBERT Academic Publishing, Saarbrücken, 148 pp.
- Irwanto, R. R. and A. S. D. Irsyam. 2021. *Acer laurimum* Hassk. Sapindaceae. In *Ethnobotany of the Mountain Regions of Southeast Asia*. *Ethnobotany of Mountain Regions*. Franco, F. M. (ed.), Springer, Cham. Pp. 43–47.
- Jain, S. K. and R. A. De Filipps. 1991. Medicinal plants of India. 1–2. - Reference Publ., Inc. Michigan. 849 pp. - Price 95 USD. ISBN 0–917256-39-5. *Nordic Journal of Botany* 12: 314.
- Kadota, Y. 2010. Systematic studies of Asian *Aconitum* (Ranunculaceae) XIII. Species of Bhutan including a new scandent species. *Journal of Japanese Botany* 85: 8–24.
- Kanjilal, P. B., R. Kotoky and M. Couladis. 2009. Chemical composition of the stem oil of *Aristolochia indica* L. *Journal of Essential Oil Research* 21: 24–25.
- Krishnaraju, A. V., T. V. N. Rao, D. Sundararaju, M. Vanisree, H.-S. Tsay and G. V. Subbaraju. 2005. Assessment of bioactivity of Indian medicinal plants using brine shrimp (*Artemia salina*) lethality assay. *International Journal of Applied Science and Engineering* 3: 125–134.
- Lidén, M. 2010. Three new species of *Dactylicapnos* (Fumariaceae) and a synopsis of the *D. macrocapnos* complex. *Nordic Journal of Botany* 28: 656–660.
- Maeda, H., M. Yamazaki and Y. Katagata. 2011. Kuromoji (*Lindera umbellata*) essential oil-induced apoptosis and differentiation in human leukemia HL-60 cells. *Experimental and Therapeutic Medicine* 3: 49–52.
- Mahmud, Z. A., M. A. Islam and N. Qais. 2012. Pharmacological Investigations of *Premna esculenta* (Roxb) (Verbenaceae): Biochemical, Pharmacological and Toxicological aspects. Lap Lambert Academic Publishing, Saarbrücken, 168 pp.
- Michael, H. 2023. World Plants. Synonymic Checklist and Distribution of the World Flora. Version 14.6. last update Dec. 27,

2022. Retrieved Jan. 1, 2023, available from <https://www.worldplants.de>.
- Myers, N., R. A. Mittermeier, C. G. Mittermeier, G. A. B. da Fonseca and J. Kent. 2000. Biodiversity hotspots for conservation priorities. *Nature* 403: 853–858.
- Noltie, H. J. 1994. Flora of Bhutan: Including a Record of Plants from Sikkim and Darjeeling Vol. III, Part I. Royal Botanic Garden, Edinburgh, for the Overseas Development Administration, Eland House, Stag Place, London, and the Royal Government of Bhutan, Thimphu, 456 pp.
- Noltie, H. J. 2000. Flora of Bhutan: Including a Record of Plants from Sikkim and Darjeeling, Vol. III, Part II. Royal Botanic Garden, Edinburgh, for the Overseas Development Administration, Eland House, Stag Place, London, and the Royal Government of Bhutan, Thimphu, 460 pp.
- Ohba, H. and S. Akiyama. 2010. Four new species of Himalayan *Prunus* subgenus *Cerasus* (Rosaceae-Prunoideae). *Bulletin of the National Museum of Nature and Science, Series B* 36: 133–140.
- Patil, V. N. and S. S. Deokule. 2010. Pharmacognostic study of *Chlorophytum tuberosum* Baker. *International Journal of Ayurvedic Research* 1: 237–242.
- Pezzuto, J. M., S. M. Swanson, W. Mar, C. T. Che, G. A. Cordell and H. H. Hong. 1998. Evaluation of the mutagenic cytostatic potential of the aristolochic acid (3,4-methylenedioxy-8-methoxy-10-nitrophenanthrene-1-carboxylic acid) and several derivatives. *Mutation Research* 206: 447–454.
- Phuentsho, P., R. Dorji and L. Norbu. 2021. *Ipomoea campanulata* L. (Convolvulaceae): A new record to the flora of Bhutan. *Bhutan Journal of Natural Resources & Development* 8: 37–40.
- Podlech, D. 2010. Four new *Astragalus* species (Leguminosae) from China and Bhutan. *Pakistan Journal of Botany* 42: 27–34.
- Rabgay, K. and P. Kumar. 2019. *Crepidium aphyllum* (Orchidaceae), a new record from Bhutan. *Journal of Threatened Taxa* 11: 14914–14916.
- Rabgay, K., S. Qazi, T. Nidup, D. B. Gurung, L. Penjor, S. Lhendup and P. Kumar. 2021. Additions to orchid flora of Bhutan-I. *Taiwania* 66: 408–414.
- Rushforth, K. 2010. A preliminary revision of the Sino-Himalayan Whitebeams (*Sorbus* section *Thibeticae*: Rosaceae). *In International Dendrology Society Year Book 2009*. International Dendrology Society (ed.), Botanic Gardens, Kew. Pp. 74–102.
- Sukhorukov, A. P. 2012. Taxonomic notes on *Dysphania* and *Atriplex* (Chenopodiaceae). *Willdenowia* 42: 169–180.
- Tenzin, J., S. Nidup and D. Dorji. 2021. New records of mass seeding *Cephalostachyum latifolium* Munro (Poaceae) along the mid-elevation broadleaved forest of Sarpang district, Bhutan. *Journal of Threatened Taxa* 13: 20136–20139.
- Wen, J. and W. Shi. 2012. Revision of the *Maddenia* clade of *Prunus* (Rosaceae). *PhytoKeys* 11: 39–59.
- Yoshida, T. and C. Grey-Wilson. 2012. A new species of blue poppy. *The Plantsman* 11: 96–101.
- Yoshida, T., R. Yangzom and D. Long. 2017a. Dancing butterflies of the east Himalayas: New *Meconopsis* species from East Bhutan, Arunachal Pradesh, and South Tibet. *Sibbaldia: The International Journal of Botanic Garden Horticulture* 14: 69–96.
- Yoshida, T., R. Yangzom and M. F. Newman. 2017b. *Roscoea megalantha* (Zingiberaceae), a new species from Eastern Bhutan and India. *Edinburgh Journal of Botany* 74: 255–263.