



## Supplement

The following supplementary materials are available for this article: Yang, Z.-M., Chou, W.-C., Maciejewski, S., Wei, Y.-G. 2023. *Primulina nymphaeoides* (Gesneriaceae), a new species from Guangxi, China. *Taiwania* 68(1): 44-50. doi: 10.6165/tai.2023.68.44

**Table S1.** List of species along with accession number of *trnL-F* and ITS sequences used in this study.

Species name	Voucher number	<i>trnL-F</i>	ITS
<i>Petrocodon ainsliifolius</i> W.H.Chen & Y.M.Shui	Y.M.Shui et al 44071	HQ632941	HQ633038
<i>Petrocodon hancei</i> (Hemsl.) Mich.Möller & A.Weber	GDLC05	KY393440	KY394846
<i>Primulina alutacea</i> F.Wen, B.Pan & B.M.Wang	B.M. Wang & B. Pan 090811	KY393441	KY394847
<i>Primulina argentea</i> Xin Hong, F.Wen & S.B.Zhou	F. Wen 20120930-1	KY393442	KY394848
<i>Primulina baishouensis</i> (Y.G.Wei, H.Q.Wen & S.H.Zhong) Yin Z.Wang	HXBS	KF498223	KF498103
<i>Primulina balansae</i> (Drake) Mich.Möller & A.Weber	BALAN	MK746274	MK747141
<i>Primulina beiliuensis</i> B.Pan & S.X.Huang	GXBLBC	KY393444	KY394850
<i>Primulina beiliuensis</i> var. <i>fimbribracteata</i> F.Wen & B.D.Lai	SGQJ04	KY393445	KY394851
<i>Primulina bicolor</i> (W.T.Wang) Mich.Möller & A.Weber	SLHLCB	KF498242	KF498116
<i>Primulina bipinnatifida</i> (W.T.Wang) Yin Z.Wang & J.M.Li	Guangxi NA/Li J.M.NA	KF498235	KF498113
<i>Primulina bobaiensis</i> Q.K.Li, Qiang Zhang & Wen L.Li	BBGL01	KY393448	KY394854
<i>Primulina bogneriana</i> (B.L.Burtt) Mich.Möller & A.Weber	WF7	MK746225	MK747166
<i>Primulina brachytricha</i> (W.T.Wang & D.Y.Chen) Yin Z.Wang	R.B.Mao & DWDMCZ	KF498155	KF498048
<i>Primulina brachytricha</i> var. <i>magnibracteata</i> (W.T.Wang & D.Y.Chen) Mich.Möller & A.Weber	KFC4193	MK369994	MK369979
<i>Primulina brunnea</i> (W.T.Wang) Mich.Möller & A.Weber	BRUN	MK746275	MK747142
<i>Primulina bullata</i> S.N.Lu & F.Wen	Fang Wen & S. N. Lu WFCJ11110901	KF498184	KF498071
<i>Primulina bipinnatifida</i> (W.T.Wang) Yin Z.Wang & J.M.Li	CANG	MK746289	MK747103
<i>Primulina cardaminifolia</i> Yan Liu & W.B. Xu	Wei-Bin Xu & Yan Liu 08050	MK746255	MK747131
<i>Primulina carinata</i> Y.G.Wei, F.Wen & H.Z.Lü	F. Wang & Y. G. Wei WM-GC0702	KY393452	KY394858
<i>Primulina cataractarum</i> X.L.Yu & A.Liu	N2	MW960360	MW900264
<i>Primulina chizhouensis</i> Xin Hong, S.B.Zhou & F.Wen	S.B.Zhou & Xin Hong 0806001	KY393455	KY394861
<i>Primulina colaniae</i> (Pellegr.) Mich.Möller & A.Weber	WF8	MK746224	MK747167
<i>Primulina confertiflora</i> (W.T.Wang) Mich.Möller & A.Weber	W.-B. Xu 11778 (IBK)	KC190202	KC190195
<i>Primulina cordata</i> Mich.Möller & A.Weber	GXYS05	KF498209	KF498137
<i>Primulina cordifolia</i> (D.Fang & W.T.Wang) Yin Z.Wang	GXLZ01	KF498193	KF498134
<i>Primulina cordistigma</i> F.Wen, B.D.Lai & B.M.Wang	B.M.Wang 121008-1	MK746251	MK747118
<i>Primulina crassirhizoma</i> F.Wen, Bo Zhao & Xin Hong	FANG WEN & Xin Hong 0169	KY393458	KY394864
<i>Primulina crassituba</i> (W.T.Wang) Mich.Möller & A.Weber	HNSP	MK746230	MK747147
<i>Primulina curvituba</i> B.Pan, L.H.Yang & M.Kang	Li-Hua Yang, YLH368	MK746242	MK747137
<i>Primulina danxiaensis</i> (W.B.Liao, S.S.Lin & R.J.Shen) W.B.Liao & K.F.Chung	DXS04	KY393460	KY394866
<i>Primulina debaoensis</i> N.Jiang & Hong Li	Jiang Neng 080628	KY393462	KY394868
<i>Primulina depressa</i> (Hook.f.) Mich.Möller & A.Weber	DXS02	KY393463	KY394869
<i>Primulina diffusa</i> Xin Hong, F.Wen & S.B.Zhou	PJGL01	KY393465	KY394871
<i>Primulina dongguanica</i> F.Wen, Y.G.Wei & R.Q.Luo	HZLM01	KF498226	KF498105
<i>Primulina drakei</i> (B.L.Burtt) Mich.Möller & A.Weber	YNXM01	KY393468	KY394874
<i>Primulina dryas</i> (Dunn) Mich.Möller & A.Weber	T.C. Godfrey 369	KY393469	KY394875
<i>Primulina duanensis</i> F.Wen & S.L.Huang	Long-Fei Fu and Jian-Jun Li, 20140402	KY393471	KY394877
<i>Primulina eburnea</i> (Hance) Yin Z.Wang	JH01	KF498227	KF498106
<i>Primulina effusa</i> F.Wen & B.Pan	KFC4167	MK369991	MK369976
<i>Primulina fengkaiensis</i> Z.L.Ning & M.Kang	Ming Kang et al GDFK06	KY393475	KY394881
<i>Primulina fengshanensis</i> F.Wen & Yue Wang	F. Wen 06100101	KY393476	KY394882
<i>Primulina fimbriosepala</i> (Hand.-Mazz.) Yin Z.Wang	CBL02	KF498153	KF498046



<i>Primulina fimbriosepala</i> var. <i>mollis</i> (W.T.Wang) Mich.Möller & A.Weber	MMM HQ	KY393478	KY394884
<i>Primulina flavimaculata</i> (W.T.Wang) Mich.Möller & A.Weber	HBGL01	KY393479	KY394885
<i>Primulina floribunda</i> (W.T.Wang) Mich.Möller & A.Weber	DHGL01	KY393480	KY394886
<i>Primulina fordii</i> (Hemsl.) Yin Z.Wang	KFC4198	MK369996	MK369981
<i>Primulina fordii</i> var. <i>dolichotricha</i> (W.T.Wang) Mich.Möller & A.Weber	DHS01	MK746247	MK747125
<i>Primulina gemella</i> (D.Wood) Yin Z.Wang	C9-HC	FJ501523	FJ501345
<i>Primulina glabrescens</i> (W.T.Wang & Mich.Möller & A.Weber) D.Y.Chen	GZLBSM	MK746278	MK747132
<i>Primulina glandaceistriata</i> X.X.Zhu, F.Wen & H.Sun	GXLCHW	MK746256	MK747114
<i>Primulina glandulosa</i> (D.Fang, L.Zeng & Z.Wang) D.H.Qin) Yin	Jia-Mei Li 054291	KF498201	KF498087
<i>Primulina gongchengensis</i> Y.S.Huang & Yan Liu	Yu-Song Huang et Wei-Bin Xu 10500	KY393483	KY394889
<i>Primulina grandibracteata</i> (J.M.Li & Mich.Möller) Mich.Möller & A.Weber	YNHK	MK746266	MK747121
<i>Primulina guigangensis</i> L.Wu & Qiang Zhang	GXGGBC	KY393486	KY394892
<i>Primulina guihaiensis</i> (Y.G.Wei, B.Pan & Mich.Möller & A.Weber) W.X.Tang)	GXLG03	KF498191	KF498078
<i>Primulina guizhongensis</i> Bo Zhao, B.Pan & F.Wen	3038	KY393488	KY394894
<i>Primulina halongensis</i> (Kiew & A.Weber) T.H.Nguyên) Mich.Möller &	YNCB01	KY393490	KY394896
<i>Primulina hedyotideae</i> (Chun) Yin Z.Wang	GXNM03	KF498198	KF498084
<i>Primulina heterochroa</i> F.Wen & B.D.Lai	F. Wen, B.D. Lai & F.Y. Nong 20130722-01	KY393492	KY394898
<i>Primulina heterotricha</i> (Merr.) Y.Dong & Yin Z.Wang	Yin-Zheng Wang 06731	KF498218	KF498099
<i>Primulina hezhouensis</i> (W.H.Wu & K.F.Chung) W.B.Xu &	HZXH	MK746258	MK747143
<i>Primulina hiepii</i> (Kiew) Mich.Möller & A.Weber	WF2	MK746223	MK747144
<i>Primulina hochiensis</i> (C.C.Huang & X.X.Chen) Mich.Möller & A.Weber	B. Gao 08171	KF498180	KF498068
<i>Primulina huaijiensis</i> Z.L.Ning & Jing Wang	GDHJ02	KF498159	KF498127
<i>Primulina huangii</i> F.Wen & Z.B.Xin	WF150822-01	MK625697	MK625449
<i>Primulina hunanensis</i> K.M.Liu & X.Z.Cai	HNBC	MK746270	MK747152
<i>Primulina jiangyongensis</i> X.L.Yu & Ming Li	X. L. Yu 12051501	KY393496	KY394902
<i>Primulina jingxiensis</i> (Yan Liu, W.B.Xu & K.F.Chung) H.S.Gao) W.B.Xu &	Yan Liu, Wei-bin Xu & Hai-shan GaoL1260	KY393497	KY394903
<i>Primulina jiuwanshanica</i> (W.T.Wang) Yin Z.Wang	JWS	MK746260	MK747116
<i>Primulina juliae</i> (Hance) Mich.Möller & A.Weber	SMYA02	KY393500	KY394906
<i>Primulina langshanica</i> (W.T.Wang) Yin Z.Wang	LSCZ	KF498232	KF498109
<i>Primulina latinervis</i> (W.T.Wang) Mich.Möller & A.Weber	XIN1	KY393502	KY394908
<i>Primulina laxiflora</i> (W.T.Wang) Yin Z.Wang	GXYL01	KF498192	KF498079
<i>Primulina lechangensis</i> Xin Hong, F.Wen & S.B.Zhou	GDLC12	KY393504	KY394910
<i>Primulina leei</i> (F.Wen, Y.Wang & A.Weber) Q.X.Zhang) Mich. Moller	KFC4154	MK369998	MK369983
<i>Primulina leiophylla</i> (W.T.Wang) Yin Z.Wang	GXJX07	KF498185	KF498072
<i>Primulina lepingensis</i> Z.L.Ning & M.Kang	M. Kang et al. JXLP01-1	KY393507	KY394913
<i>Primulina leprosa</i> (Yan Liu & W.B.Xu) W.B.Xu & K.F.Chung	W. B. Xu et B. Pan 091681	KY393508	KY394914
<i>Primulina lianpingensis</i> Li H.Yang, H.H.Kong & M.Kang	HLYP01-1	MH344573	MH343919
<i>Primulina liboensis</i> (W.T.Wang & A.Weber) D.Y.Chen) Mich.Möller &	GXJX08	KY393511	KY394917
<i>Primulina liguliformis</i> (W.T.Wang) Mich.Möller & A.Weber	GXHC01	KF498177	KF498132
<i>Primulina lijiangensis</i> (B.Pan & K.F.Chung) W.B.Xu &	GLS01	KY393513	KY394919
<i>Primulina linearicalyx</i> F.Wen, B.D.Lai & Y.G.Wei	B.D.Lai 111016-1	KF498207	KF498091
<i>Primulina linearifolia</i> (W.T.Wang) Yin Z.Wang	Jia-Mei Li 11121	KF498199	KF498085



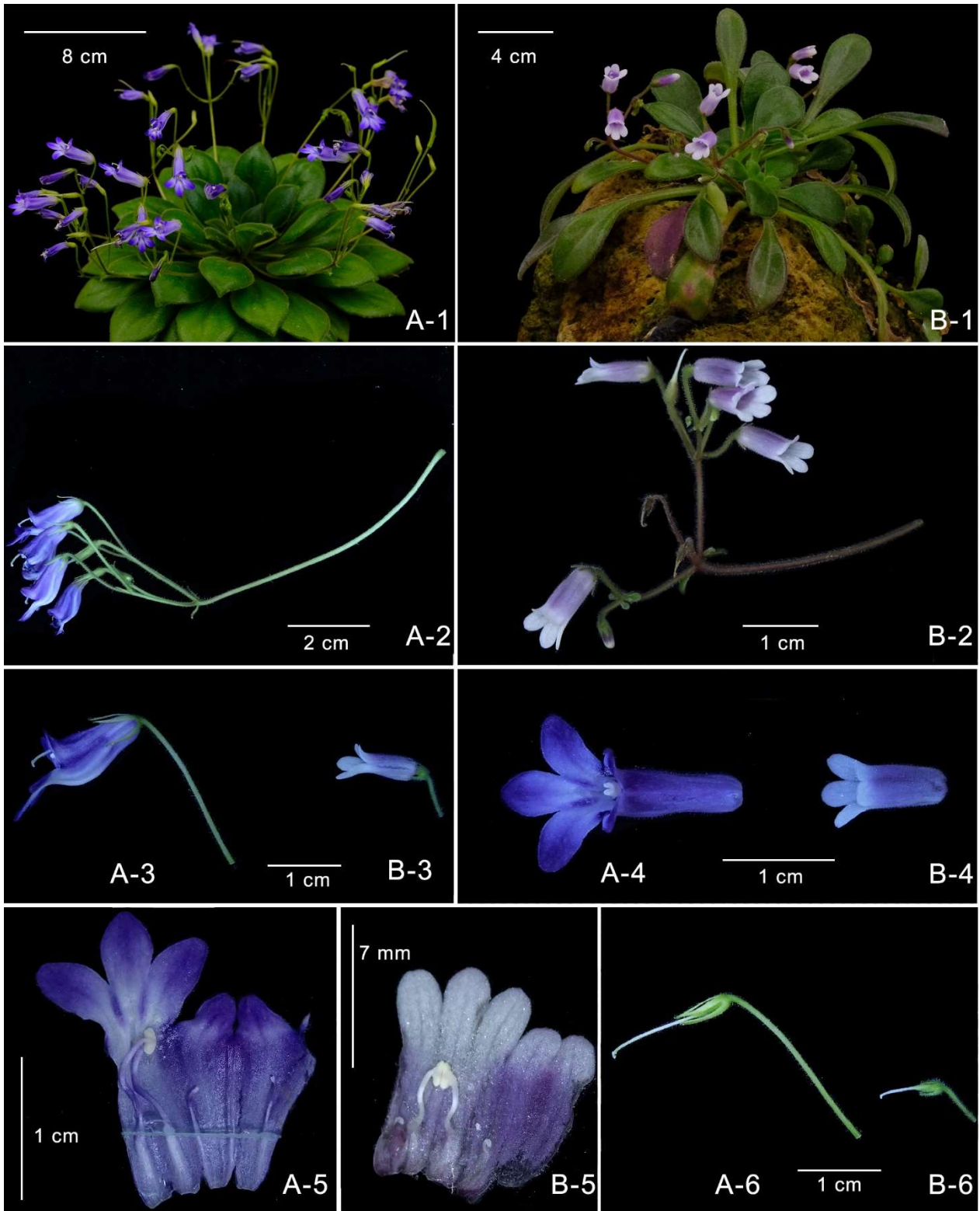
<i>Primulina lingchuanensis</i> (Yan Liu & Y.G.We) Mich.Möller & A.Weber	L CXHGL01	KY393516	KY394922
<i>Primulina linglingensis</i> (W.T.Wang) Mich.Möller & A.Weber	LLBC	KY393517	KY394923
<i>Primulina linglingensis</i> var. <i>fragrans</i> F.Wen, Y.Z.Ge & Bo Pan	130409-01	MK746285	MK747157
<i>Primulina lijiangensis</i> (D.Fang & D.H.Qin) Yan Liu	LJGL01	KY393518	KY394924
<i>Primulina lobulata</i> (W.T.Wang) Mich.Möller & A.Weber	GDQX04	KF498163	KF498054
<i>Primulina longgangensis</i> (W.T.Wang) Yan Liu & Yin Z.Wang	A. Takhtajan & N. Aruzytov 1975	KF498257	KF498150
<i>Primulina longicalyx</i> (J.M.Li & Yin Z.Wang) Mich.Möller & A.Weber	Li Jia-Mei 05523	KF498175	KF498131
<i>Primulina longii</i> (Z.Yu Li) Z.Yu Li	GXYF01	KF498208	KF498092
<i>Primulina longzhouensis</i> (B.Pan & W.H.Wu) W.B.Xu & K.F.Chung	Bo Pan & Wang-Hui Wu 091751	MK746262	MK747139
<i>Primulina lunglinensis</i> (W.T.Wang) Mich.Möller & A.Weber	GZXY04	KY393524	KY394930
<i>Primulina lunglinensis</i> var. <i>amblyosepala</i> (W.T.Wang) Mich.Möller & A.Weber	LCDE	MK746281	MK747105
<i>Primulina lungzhouensis</i> (W.T.Wang) Mich.Möller & A.Weber	GXJX10	KF498187	KF498074
<i>Primulina luochengensis</i> (Yan Liu & W.B.Xu) Mich.Möller & A.Weber	GXLC04	KY393527	KY394933
<i>Primulina lutea</i> (Yan Liu & Y.G.We) Mich.Möller & A.Weber	SLHLCL	KY393528	KY394934
<i>Primulina lutescens</i> B.Pan & H.S.Ma	Bo Pan and Hu-Sheng Ma MHS2016080401	MK369992	MK369977
<i>Primulina lutvittata</i> F.Wen & Y.G.We	KFC4149	MK369993	MK369978
<i>Primulina luzhaiensis</i> (Yan Liu, Y.S.Huang & Mich.Möller & A.Weber)	W. B. Xu & Y. S. Huang 08460	KY393530	KY394936
<i>Primulina mabaensis</i> K.F.Chung & W.B.Xu	SZY02	KY393531	KY394937
<i>Primulina macrodonta</i> (D.Fang & D.H.Qin) Mich.Möller & A.Weber	GXGLLC01	KY393532	KY394938
<i>Primulina maculata</i> W.B.Xu & J.Guo	HYNED1	MK746243	MK747126
<i>Primulina maguanensis</i> (Z.Yu Li, H.Jiang & Mich.Möller & A.Weber)	YNMG	MK746267	MK747127
<i>Primulina malipoensis</i> Li H.Yang & M.Kang	YNMLP01	MK746240	MK747123
<i>Primulina medica</i> (D.Fang ex W.T.Wang) Yin Z.Wang	GXZS02	KF498212	KF498094
<i>Primulina melanofilamenta</i> Y.Liu & F.Wen	GXXA	MK746277	MK747158
<i>Primulina minor</i> F.Wen & Y.G.We	Fang Wen, 2011051301	MK746290	MK747160
<i>Primulina minutimaculata</i> (D.Fang & Z.Wang)	Yin Jia-Mei Li 067134	KY393535	KY394941
<i>Primulina moi</i> F.Wen & Y.G.We	SGWY03	KF498241	KF498115
<i>Primulina mollifolia</i> (D.Fang & Z.Wang)	J.M.Li & Yin Jia-Mei Li 054281	KY393538	KY394944
<i>Primulina multifida</i> B.Pan & K.F.Chung	Wei-Bin Xu & Bo Pan 09806	KY393540	KY394946
<i>Primulina nandanensis</i> (S.X.Huang, Y.G.We & Mich.Möller & A.Weber)	Y.G. Wei et al. 0601	KF498182	KF498069
<i>Primulina napoensis</i> (Z.Yu Li) Mich.Möller & A.Weber	GXJX05	KY393542	KY394948
<i>Primulina ningmingensis</i> (Yan Liu & K.F.Chung)	W.B.Xu & Wang-Hui Wu W09155	KY393543	KY394949
<i>Primulina nymphaeoides</i> Y.G.We & W.C.Chou	BNS & CWC190529-01	OP219793	OP218502
<i>Primulina obtusidentata</i> (W.T.Wang) Mich.Möller & A.Weber	GZJK01	KF498214	KF498096
<i>Primulina ophiopogoides</i> (D.Fang & Z.Wang)	Yin Yin-Zheng Wang 06713	KF498172	KF498062
<i>Primulina orthandra</i> (W.T.Wang) Mich.Möller & A.Weber	YS03	KF498249	KF498147
<i>Primulina parvifolia</i> (W.T.Wang) Yin Z.Wang & J.M.Li	GGSL01	KF498166	KF498057
<i>Primulina pengii</i> W.B.Xu & K.F.Chung	GDRY01	MK746250	MK747154
<i>Primulina petrocoseoides</i> B.Pan & F.Wen	SHDBC	KY393547	KY394953
<i>Primulina pinnatifida</i> (Hand.-Mazz.) Yin Z.Wang	MS02	KY393548	KY394954



<i>Primulina polycephala</i> (Chun) Mich.Möller & A.Weber	YS03	KY393550	KY394956
<i>Primulina porphyrea</i> X.L.Yu & Ming Li	DNGL01	KY393551	KY394957
<i>Primulina pseudoeburnea</i> (D.Fang & W.T.Wang) Mich.Möller & A.Weber	GXBSTD01	KF498169	KF498060
<i>Primulina pseudoglandulosa</i> W.B.Xu & K.F.Chung	GXYS06	KF498210	KF498138
<i>Primulina pseudoheterotricha</i> (T.J.Zhou, B.Pan & W.B.Xu) Mich.Möller & A.Weber	JYY	MK746291	MK747117
<i>Primulina pseudolinearifolia</i> W.B.Xu & K.F.Chung	JXY	MK746280	MK747140
<i>Primulina pseudomollifolia</i> W.B.Xu & Yan Liu	Wei-Bin Xu & Kuo-Fang Chung 09757	MK746244	MK747134
<i>Primulina pseudoroesealba</i> Jian Li, F.Wen & L.J.Yan	JFHGL01	KY393553	KY394959
<i>Primulina pteropoda</i> (W.T.Wang) Yan Liu	Yin-Zheng Wang 06731	KY393554	KY394960
<i>Primulina pungentisepala</i> (W.T.Wang) Mich.Möller & A.Weber	JEGL01	KY393556	KY394962
<i>Primulina purpurea</i> F.Wen, Bo Zhao & Y.G.Wei	ZHGL01	KY393558	KY394964
<i>Primulina qingyuanensis</i> Z.L.Ning & M.Kang	GDQX01	KY393559	KY394965
<i>Primulina renifolia</i> (D.Fang & D.H.Qin) J.M.Li & Yin Z.Wang	GXDA02	KF498171	KF498061
<i>Primulina repanda</i> (W.T.Wang) Yin Z.Wang	GXRS02	KY393562	KY394969
<i>Primulina ronganensis</i> (D.Fang & Y.G.Wei) Mich.Möller & A.Weber	GXRA01	KF498202	KF498135
<i>Primulina rongshuiensis</i> (Yan Liu & Y.S.Huang) W.B.Xu & K.F.Chung	GXRS01	KF498203	KF498088
<i>Primulina roseoalba</i> (W.T.Wang) Mich.Möller & A.Weber	LDGL01	KY393566	KY394972
<i>Primulina rosulata</i> (F.Wen & Y.G.Wei) Z.L.Ning & X.Y.Zhuang	PLYT-6	MH344627	MH343979
<i>Primulina rotundifolia</i> (Hemsl.) Mich.Möller & A.Weber	OO3	KY393569	KY394975
<i>Primulina rubribracteata</i> Z.L.Ning & M.Kang	Z.L. Ning & M. Kang. N150426	KY393572	KY394978
<i>Primulina sclerophylla</i> (W.T.Wang) Yan Liu	GXDA01	KF498170	KF498130
<i>Primulina secundiflora</i> (Chun) Mich.Möller & A.Weber	GZQZ	MK746279	MK747119
<i>Primulina shouchengensis</i> (Z.Yu Li) Z.Yu Li	O27	KF498239	KF498114
<i>Primulina sichuanensis</i> (W.T.Wang) Mich.Möller & A.Weber	SCBC	MK746264	MK747162
<i>Primulina sinensis</i> Hook.f	GDSZ01	KF498164	KF498055
<i>Primulina sinovietnamica</i> W.H.Wu & Qiang Zhang	Peng21956	MK369988	MK369973
<i>Primulina spinulosa</i> (D.Fang & W.T.Wang) Yin Z.Wang	Yin-Zheng Wang 06713	KF498173	KF498063
<i>Primulina subrhomboidea</i> (W.T.Wang) Yin Z.Wang	GXYS02	KY393577	KY395018
<i>Primulina subulata</i> (W.T.Wang) Mich.Möller & A.Weber	GDYA01	KF498165	KF498056
<i>Primulina subulata</i> var. <i>guilinensis</i> (W.T.Wang) W.B.Xu & K.F.Chung	GXHYXH	KF498178	KF498066
<i>Primulina subulatisepala</i> (W.T.Wang) Mich.Möller & A.Weber	CQAYH01	MK746246	MK747122
<i>Primulina suichuanensis</i> X.L.Yu & J.J.Zhou	J. J. Zhou 13100901	KY393580	KY395021
<i>Primulina swinglei</i> (Merr.) Mich.Möller & A.Weber	GXRX01	KF498205	KF498090
<i>Primulina tabacum</i> Hance	Q.J. Xie & C.X. Ye	KY393582	KY395023
<i>Primulina tenuifolia</i> (W.T.Wang) Yin Z.Wang	GXBM01	KF498167	KF498058
<i>Primulina tenuituba</i> (W.T.Wang) Yin Z.Wang	SZ12	KY393585	KY395026
<i>Primulina tiandengensis</i> (F.Wen & H.Tang) F.Wen & K.F.Chung	GXTD03	KF498206	KF498136
<i>Primulina tribracteata</i> (W.T.Wang) Mich.Möller & A.Weber	GXJX01	KY393578	KY395019
<i>Primulina tribracteata</i> var. <i>zhuana</i> (Z.Yu Li, Q.Xing & Yuan B.Li) Mich.Möller & A.Weber	1877	JX506843	JX506952
<i>Primulina tsoongii</i> H.L.Liang, Bo Zhao & F.Wen	ZSGL01	KY393588	KY395029
<i>Primulina varicolor</i> (D.Fang & D.H.Qin) Yin Z.Wang	GXNP01	KF498200	KF498086
<i>Primulina verecunda</i> (Chun) Mich.Möller & A.Weber	LBJX01	KF498231	KF498143
<i>Primulina versicolor</i> F.Wen, B.Pan & B.M.Wang	GDYD01	MK746252	MK747155
<i>Primulina vestita</i> (D.Wood) Mich.Möller & A.Weber	QZXT	MK746282	MK747156
<i>Primulina villosissima</i> (W.T.Wang) Mich.Möller & A.Weber	QXY01	KF498240	KF498145
<i>Primulina weii</i> Mich.Möller & A.Weber		DQ872811	DQ872832



<i>Primulina wenii</i> Jian Li & L.J.Yan	<i>Jian Li &amp; F. Wen 20130412-01</i>	MK746284	MK747148
<i>Primulina wentsaii</i> (D.Fang & L.Zeng) Yin Z.Wang	<i>Jia-Mei Li 11630</i>	KF498197	KF498197
<i>Primulina wuae</i> F.Wen & L.F.Fu	<i>WSBC</i>	MK746265	MK747159
<i>Primulina xiuningensis</i> (X.L.Liu & X.H.Guo) Mich.Möller & A.Weber	<i>GGGL01</i>	KY393485	KY394891
<i>Primulina xiziae</i> F.Wen, Yue Wang & G.J.Hua	<i>ZJHZ01</i>	KY393597	KY395038
<i>Primulina yangchunensis</i> Y.L.Zheng & Y.F.Deng	<i>GDYC01</i>	KY393598	KY395039
<i>Primulina yangshanensis</i> W.B.Xu & B.Pan	<i>GDNX01</i>	KY393599	KY395040
<i>Primulina yangshuoensis</i> Y.G.Weï & F.Wen	<i>Y.G. Wei 06478</i>	KF498211	KY395042
<i>Primulina yingdeensis</i> Z.L.Ning, M.Kang & X.Y.Zhuang	<i>YD01-1</i>	KY393602	KY395043
<i>Primulina yungfuensis</i> (W.T.Wang) Mich.Möller & A.Weber	<i>O21</i>	KF498236	KF498144
<i>Primulina zhoui</i> F.Wen & Z.B.Xin	<i>WF18</i>	MK746222	MK747104



**Fig. S3.** Comparison of **A: *Primulina nymphaeoides* sp.nov.** and its congener **B: *P. longzhouensis*.** (1) Plant flowering in cultivation. (2) Cyme. (3) Side view of corolla. (4) Top view of corolla. (5) Opened corolla for showing stamens and staminodes. (6) Pistil and calyx.

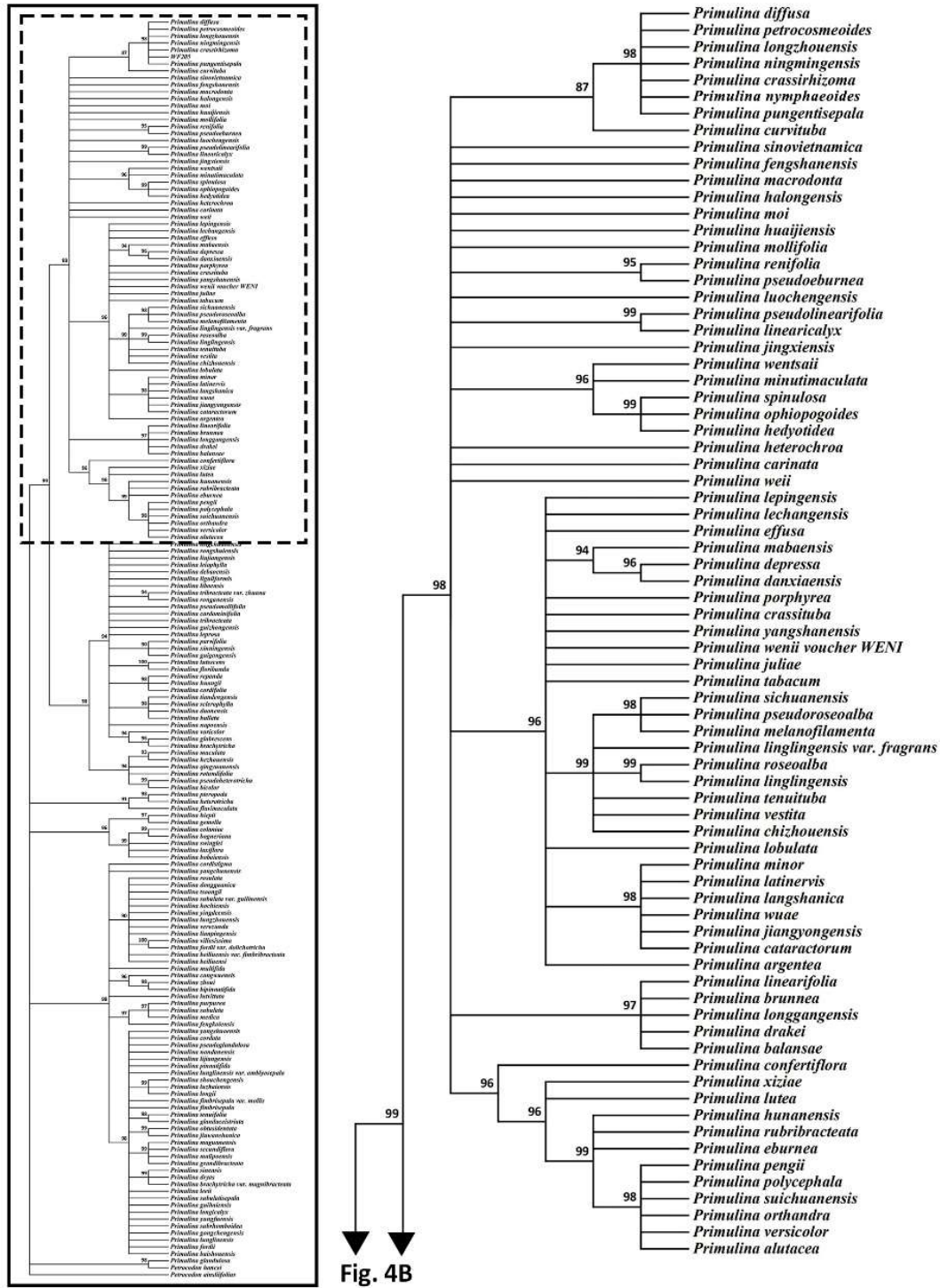


Fig. S1. Continue.



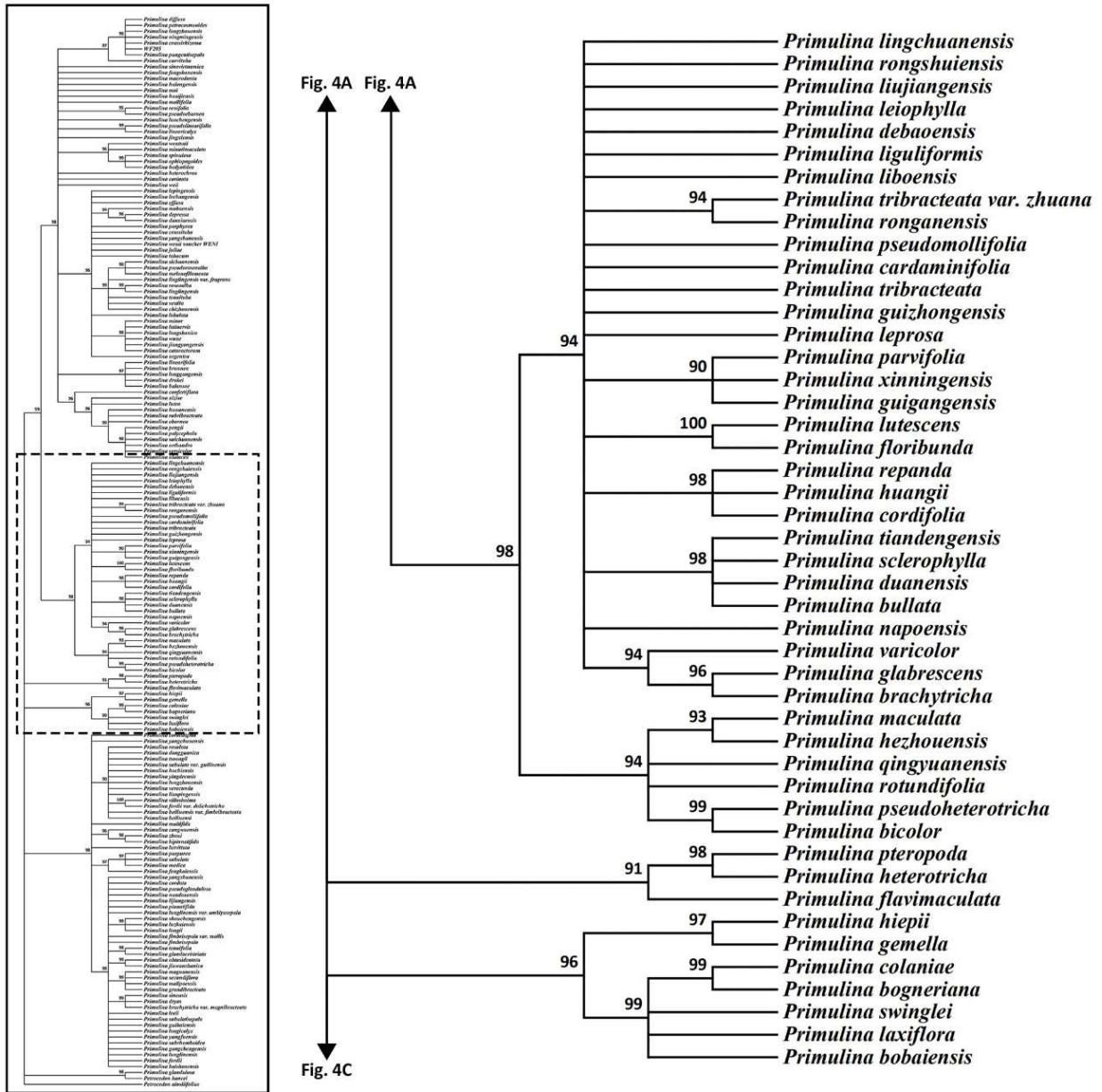
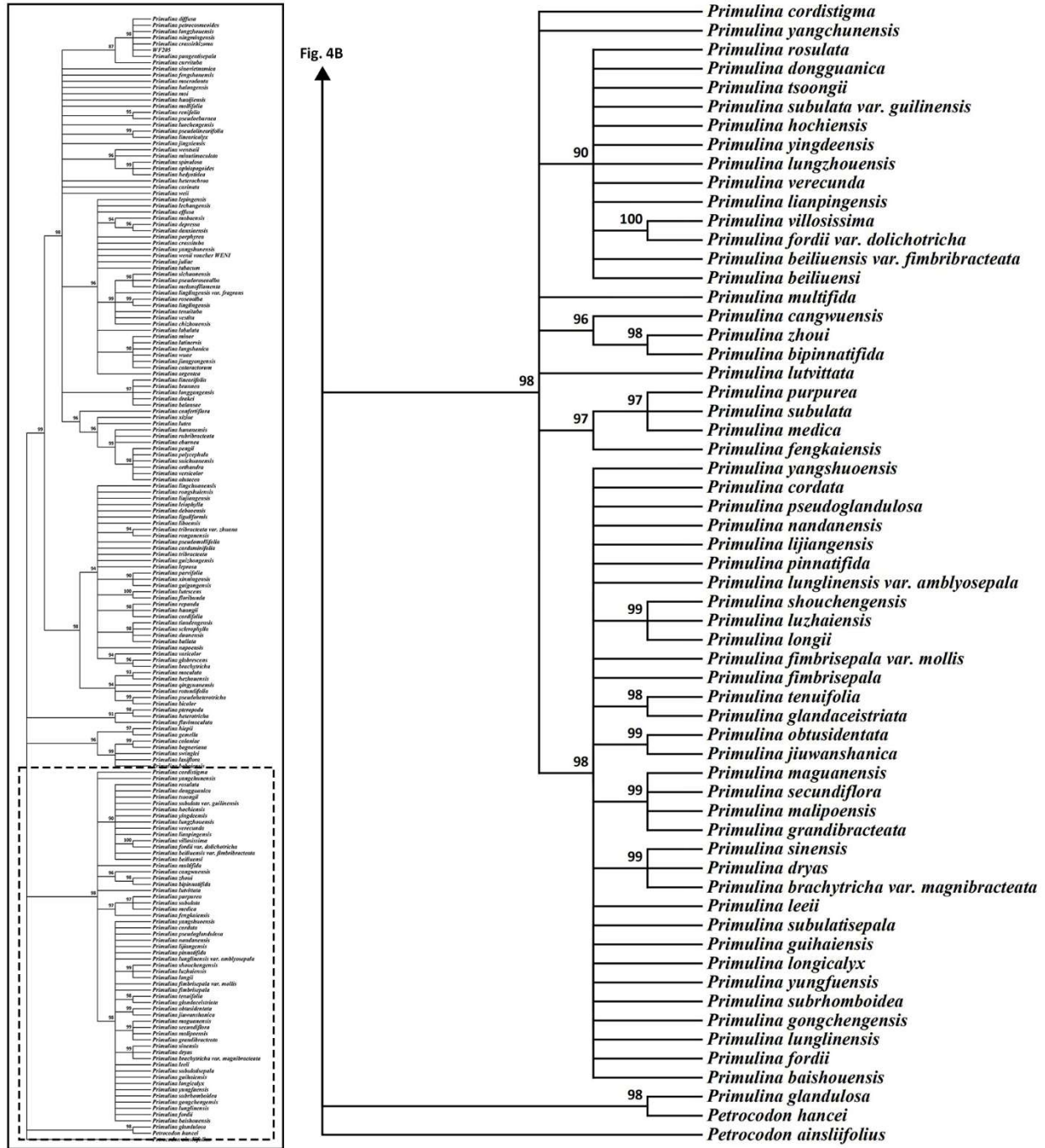


Fig. S1. Continue.





**Fig. S1.** Phylogenetic tree of *Primulina* generated by maximum likelihood (ML) of the dataset (*trnL-F*). Numbers on branches indicate bootstrap values ( $\geq 80\%$ ) of maximum likelihood analyses.

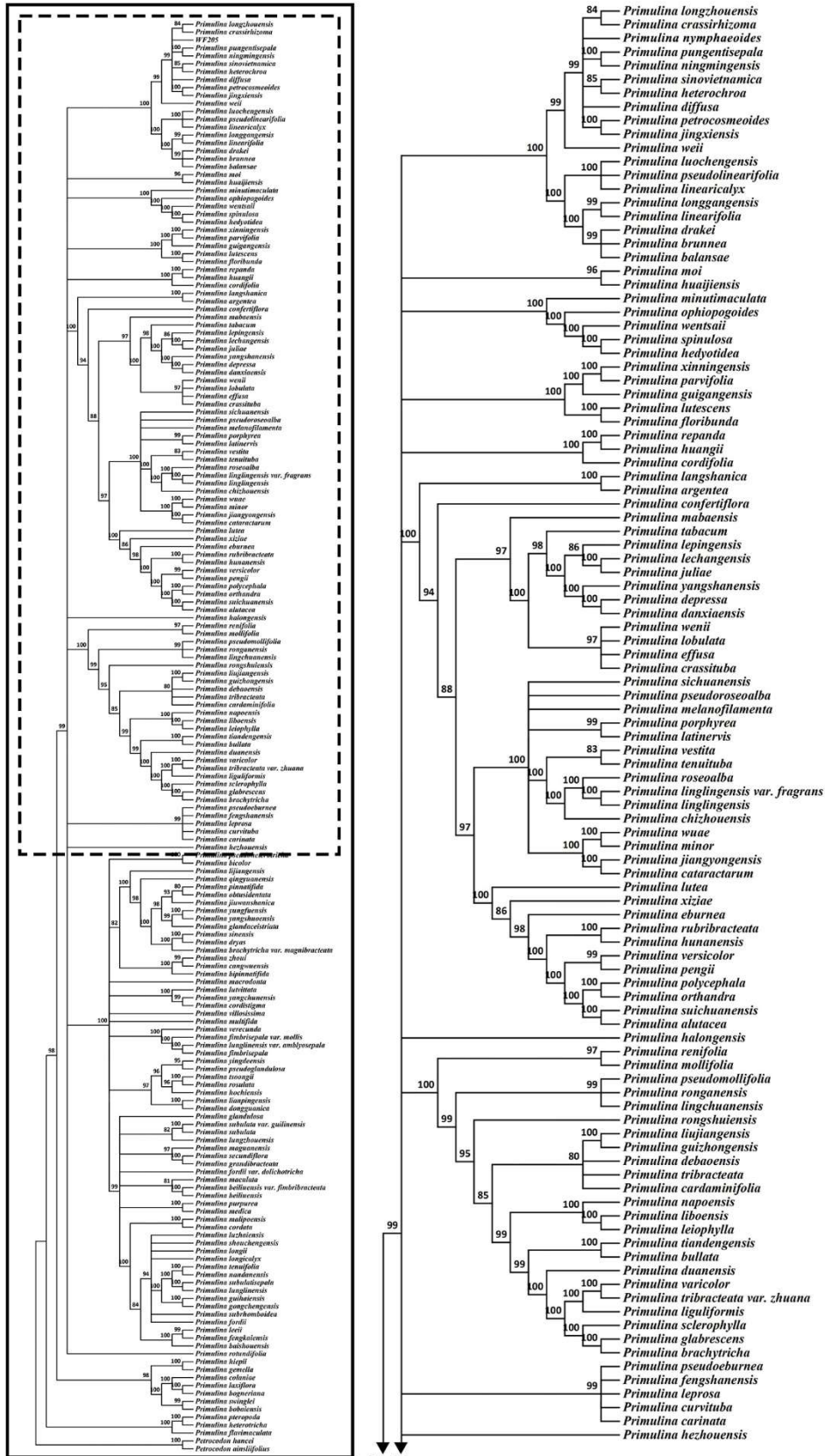


Fig. 5B

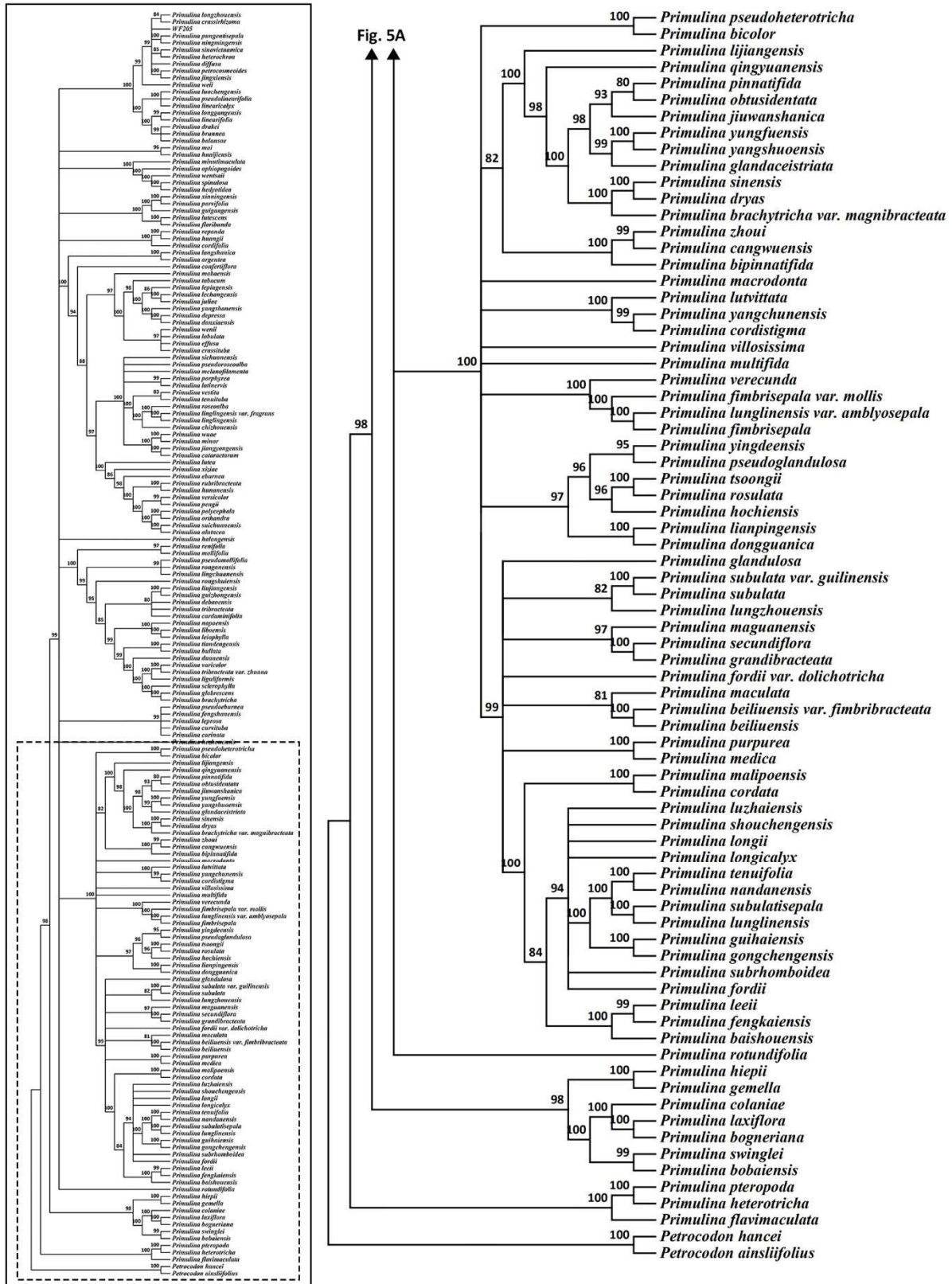


Fig. S2. Phylogenetic tree of *Primulina* generated by maximum likelihood (ML) of the dataset (ITS). Numbers on branches indicate bootstrap values ( $\geq 80\%$ ) of maximum likelihood analyses.



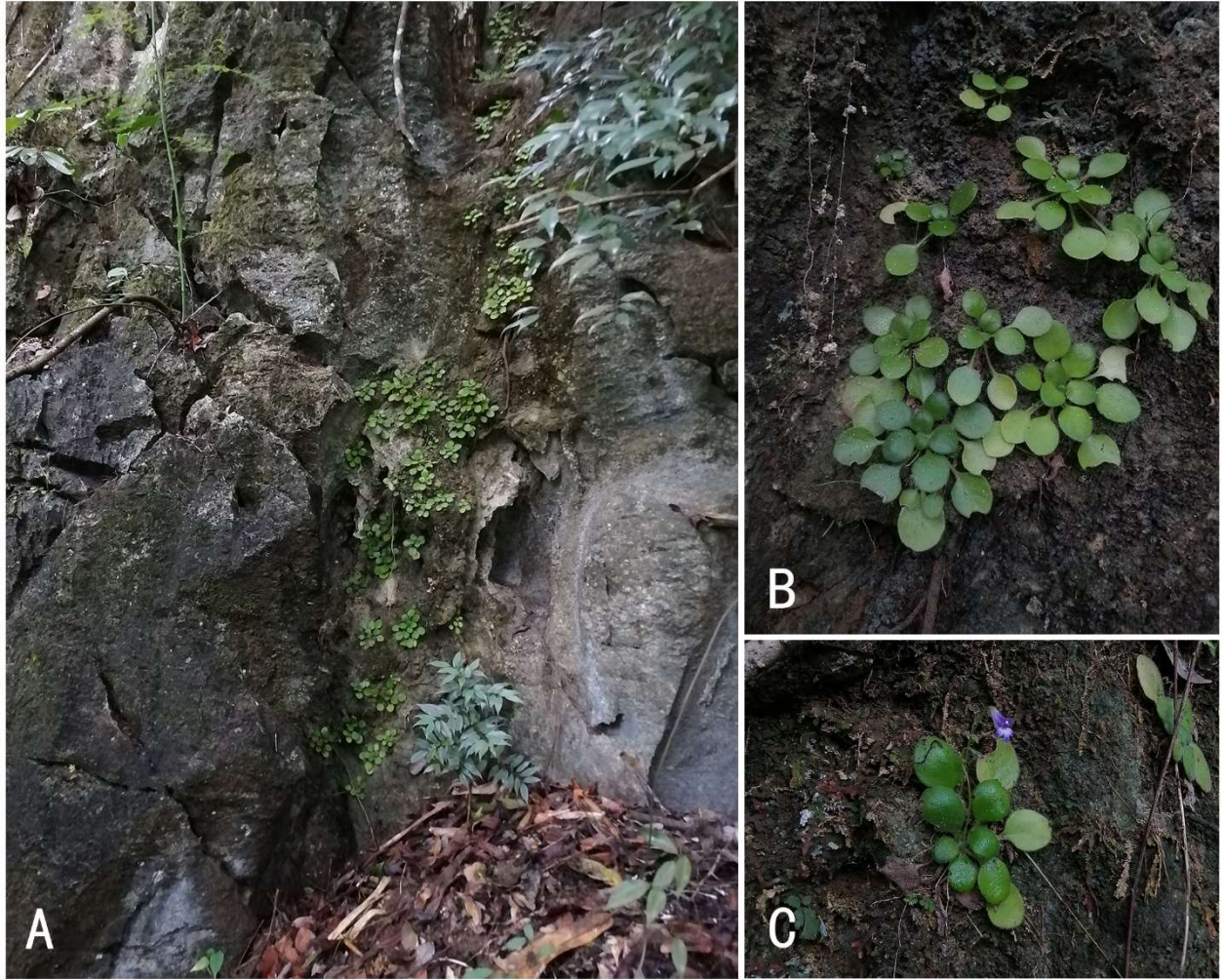


Fig. S4. *Primulina nymphaeoides* sp.nov. A: Habitat. B: Habit. C: Flowering habit.