



Nambour Orchid News.

April 2022



Plant of the month—March

Coelogyne rochussenii - David & Lorraine

Found in Malaysia, Borneo, Java Sumatra and Philippines on trees overhanging rivers at elevations up to 1500m. Hot to cool growing epiphyte and occasional lithophyte with long pendant spikes to 70cms and the flowers are extremely fragrant .

It usually flowers in March- April every year and it certainly makes a great show.

We have it hanging up in the shade house under 50% cloth.

Remember we live in an area which is surrounded by large trees and often overhang over the shade house at different times during the year so you may need 70% depending on your conditions.

We grow it in a mix of Orchiatia bark , charcoal and perlite.

Fertiliser is applied weekly using Peters CalMag Finisher at 1gm / ltr and kept moist through out the year, but in cooler weather ease off to once a month.

This *Coelogyne* is very rewarding and will make a stunning specimen.

Good growing,

David & Lorraine



Secretary news April

Species get together was held at Rod & Jan's place. The rain managed to hold off for the afternoon. Only a small number of plants were benched, Judy managed to bring along several plants of interest that presented our Judges Lynn & Charlie with a challenge for the day. Thanks go to Rod & Jan for their hospitality.

Our next Cultural meeting is on April 23. We will be spending some time to go through the navigation of our new website, members will then be able to give it a go if they wish. Charlie's culture corner at 1.15pm as usual is where you can discuss any issues you may have with growing your plants. Please offer to help Charlie if you can.

Gympie show is next on the show list. Set up is Friday April 29, Venue Gympie Indoor Bowls Club.

Maroochydore members only show is on Saturday May 7 at Bli Bli Uniting Church Hall, Lefoes Road Bli Bli. Please support other shows where you can.

For those who check species names or synonyms of orchids to see if they are correct this may be useful information:

The World Checklist of Selected Plant Families (WCSP) will soon be closed and has been superseded by the World Checklist of Vascular Plants (WCVP).

We should now change to use WCVP,

<https://wcvp.science.kew.org/>

Meetings. All meetings are subject to Qld. Govt. Covid restrictions at the time.

Social distancing is still in place please be mindful of this while moving around and doing the popular vote. **Qld Govt. covid restrictions at the time of the meeting apply.**

Hands to be sanitized before entering the hall.

Do not come to the meeting if you have any cold or flu symptoms or are a close contact of a person who has tested positive to Covid 19.

Please bring your own pen to the meeting.

Bring your own cup if you wish to have afternoon tea. This will be served by members who have completed the Tafe Covid safe for dining course required by Qld. Govt. regulation. You may bring your own afternoon tea if you prefer.

Plants must be tabled before 1.15pm when Judging will start. Your pot number is required for display of plants. Popular vote slips available on our website for printing. A volunteer will hand out the stickers for your pot. **Alison.**

Note from Editor: When submitting articles for inclusion in the newsletter please ensure you are using Arial font in size 12. Thank you.

Worth The Wait, First Flower. Rth. Thailand Fancy x C. Rungnapha Fancy

The first coach trip that Rhonda and I travelled on with the Nambour Orchid Club was on 29 February 2020 to the Qld. International Orchid Fair at Beenleigh. There I purchased a flask of Cattleya Siam Fancy x Nakorncharisri Delight x C.Rungnapha Fancy, from Sakdisri & Daughters Nursery from Thailand.

On return home I broke open the flask, washed the agar from the roots, and planted the seedlings in Sphagnum moss. As the seedlings grew, I repotted the most advanced commencing on 2 April 2020, and finalising the repotting of slower growing seedlings on 1 December 2020. A total of fifty-six plants were achieved from this flask. This is the first plant to flower, two years from date of potting.

I consider it was worth the wait and I am looking forward to the balance of plants

delivering as equally a good flower as the first plant has. **Roger**

Editors note: C. Siam Fancy x Nakorncharisri Delight is Registered as *Rth. Thailand Welcome*.



Helena's gallery



A selection of plants on display at the March meeting



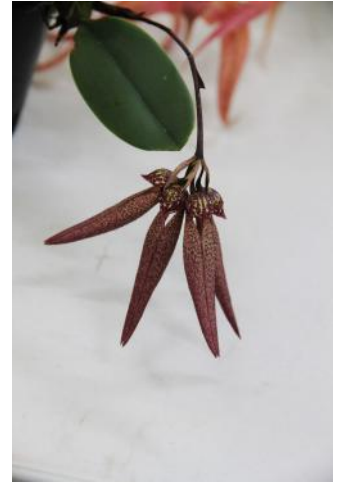
Aer. lawrenceae
Duncan



Alcra. Snowblind - Roger



Cym. Muffin
George & Helena



Bulb. plumatum x frostii
Duncan



Ctna. Deception Capri
Tom & Kirsten



Den. Woo Leng - Roger



Bulb. grandiflorum
David & Lorraine



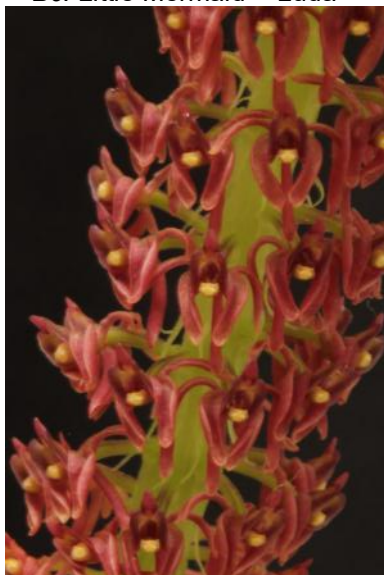
Bc. Little Mermaid - Luda



Den. dearii - Rod & Jan



Mtdm. Melissa Brianne
Roger & Rhonda



Liparis latifolia - Alison & Alan



V. Pachara Delight - Wayne



Epi. neoporpax - Jean

Species

Species get together was held at Rod & Jan's this month

*Bulbophyllum grandiflorum** *Bulbophyllum longisepalum*, *Bulbophyllum longissimum*,
Cattleya dormaniana, *Cattleya gloedeniana*, *Cattleya pumila*, *Cattleya tenebrosa*
Dendrobium bigibbum , *Dendrobium bigibbum* var. *compactum* *alba*, *Dendrobium lobatum*,
Dendrobium uniflorum, *Dendrobium rosellum*, *Dendrochilum pangasinanense*
Epidendrum neoporpax, *Holcoglossum kimballianum*, *Liparis parviflora*, *Maxillaria uncata*,
Phalaenopsis bellina, *Phalaenopsis speciosa*, *Phragmipedium besseae*, *Prosthechea boothiana*
Trichoglottis atropurpurea, *Unknown Dendrobium* sp. *Unknown* sp. X 2

* *Bulbophyllum burfordiense* = *Bulbophyllum grandiflorum*

Plant of the month - *Trichoglottis atropurpurea*

Trichoglottis atropurpurea is a small to large sized epiphytic orchid from the Philippines growing from sea level to 300 metres

With elongated leaves & branching, with roots produced all along the erect growth with ovate leaves with short inflorescence with 1 or 2 fragrant fleshy flowers

This plant is 1150mm tall growing in a vanda basket hanging in with the vanda's under 50% shade cloth. **Rod & Jan**



Plant of Botanical Interest *Dendrobium rosellum*

Common name The Pink Spotted Dendrobium. It is found in Peninsular Malaysia, Sabah, Borneo and Sumatra in hill and lower montane forests at elevations of 800-1100 metres, as a medium size warm to cool growing epiphyte. The leaves are flattened and arranged alternately along the stem and turn reddish when exposed to strong light. The single flowered inflorescence is on the end of the stem.

This particular plant came from Wayne's collection. It is growing in a mix of fine bark, charcoal and perlite in a 70 mm pot under 70 percent shade cloth. A small amount of Plantacote Top K is added twice a year with various foliar fertilisers, pesticides and fungicides used when I find the time. **Judy**

Plants of interest at the March 2022 Meeting

Notes and photos by Charlie McMonagle

As usual, the two classes for Species plant attracted a large number of exhibits, including the Plant of the Month, *Coelogyne rochussenii* which is described separately by the growers, David and Lorraine.

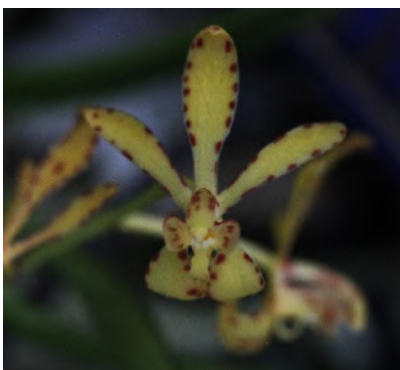
Other stand-out species included:-

Huntleya gustavi, exhibited by Rodney and Janet is a threatened species from Colombia and Ecuador where it grows in cloud forests at around 2000 metres elevation. Rodney has learned to grow species of this genus well in moss-covered pots sitting in a saucer of water. It usually presents with a single flower, richly coloured, on a short inflorescence emanating from the base of a pseudobulb. *Huntleya* is a member of the sub-tribe Zygopetalinae. There are 15 species accepted by Kew but no known hybrids.



A particularly good plant of *Cattleya dormaniana* was exhibited by Judy. This species is native to the state of Rio de Janeiro, Brazil and grows in humid forests at 600 to 1000m. It is generally regarded as a “difficult to grow” species but the owner has obviously worked out how to grow it in our climate. The long and colourful labellum is quite striking, contrasting with the dark brownish colour of the glossy petals and sepals. Although quite attractive, the species is not widely used in hybridising as its progeny are not sought after.

Dendrobium polysema fma. *pallidum*, owned by Wayne, is an almost-white form of the heavily spotted *Den. polysema*. For a time, this variant enjoyed recognition as a separate species but Kew decided that it was a colour variant of *polysema*. Growers are allowed to attach the horticultural form descriptor to the name but it is not recognised by Kew. *Den. polysema* occurs in Papua New Guinea, the Solomon Islands and Vanuata.



Lynn tabled an interesting miniature vandaceous species which was unnamed. Subsequent investigations by Lynn and the author have identified the plant as *Renanthera histrionica*, previously named *Renantherella histrionica* but all *Renantherellas* were moved to *Renanthera* in the Genera Orchidacearum Volume 6 review of the sub-tribe Aeridinae. Plants have been found in Malaysia, Borneo and Thailand, generally between sea level and 300m in hot, humid forests.

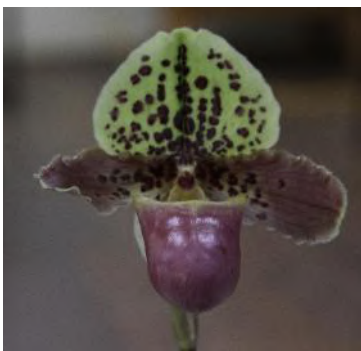
Dendrobium bulleniamum, owned by Duncan, is a striking example of the genus. The species belongs in Section Pedilonum characterised by dense clusters of flowers at one or more locations along older canes which have lost most, if not all of their leaves. Native to the Philippines and some Pacific Islands, plants are found below 1000 m. This species forms the stunning natural hybrid *Den. x usitae* when crossed with *Den. goldsmithianum*.





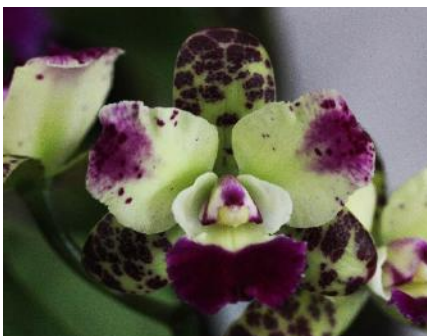
Miltonia moreliana is one of the easier-to-grow Miltonias with large, brightly coloured flowers which have a spicy fragrance. Previously considered a variety of *Miltonia spectabilis*, it is now accepted by Kew as a separate species. Plants are found in Venezuela and Brazil at elevations around 800 m so they adapt quite well to our climate. The plant, exhibited by Peter, had good size and shape even though some insect damage is evident in the photo.

This plant of *Dendrobium bigibbum* var. *superbum*, exhibited by Colin and Marilyn, was notable for its floriferousness and excellent shape. This variety occurs on Cape York Peninsula, north of Mount Molloy but many areas have been cleaned out by illegal collectors.



Paphiopedilum henryanum, exhibited by Beryl & Graham was the only plant in this section. One of the more recent (1987) discoveries in the genus, it has proved to be very popular with hybridisers transmitting strong colours and good shape to progeny. When crossed with *Paph. sukhakulii*, it makes the beautiful *Paph.* Graham Robertson.

Switching to hybrids, *Paphinia Majestic*, a primary hybrid between *Paphinia herrerae* and *Paphinia christata*, is rarely seen on the show bench. Owned by John and Bev, the plant was well grown and well flowered, equal in quality with plants awarded overseas. Paphina species are found in parts of neo-tropical America. They belong to the Stanhopeinae sub-tribe but I am aware of only one intergeneric hybrid containing this genus, a *Gongora horichiana* crossed with *Paphinia* Mem. Remo Lombardi to make *Gonginia* Valeria Tognoloni.



Rlc. Budai Win Eyes, owned by Graham & Beryl was one of a number of attractive compact and miniature Laeliinae, several of which exhibited splash petals characteristic of hybrids derived from *C. intermedia* fma. *aquinii*. In this case, the parentage contains only 3% of *C. aquinii* but it strongly influences the colour. Another parent, *C. aclandiae* contributes to the richness of colour and the spots. This is an 11th generation hybrid containing 25 species in its breeding.

Rlc. Memoria Srivilas Gold, owned by Roger and Rhonda, was the Popular vote selection in Laeliinae, not surprising given the richness of colour and firm substance in the flower. *C. dowiana* dominates in the breeding contributing over 50% but there are 15 other species which have combined to produce this striking result.



Popular Vote & Judges Choice March		
Judges Choice in Blue		* see notes
Cattleya	JC. <i>Rlc. Dal's Girl</i> 1st. <i>Rlc. Owen Holmes</i> 2nd. <i>Rlc. Deception Kokoda</i> 2nd. <i>Rlc. Blanche Aisaka</i>	Graham & Beryl Tom & Kirsten Roger George & Helena
Oncidium	JC. <i>Alcra. Snowblind</i> 1st. <i>Mtdm. Mellisa Brianne</i> 2nd. <i>Arv. Sea Snake</i> 3rd. <i>Brat. Sadie loo x Mtdm. Christmas Eve</i>	Roger Roger David & Lorraine Rod & Jan
Vanda/Phal.	1st. <i>Vanda Pachara Delight</i> JC. <i>Vanda Robert's Delight</i> 3rd. <i>Vanda Green Light</i>	Wayne Rod & Jan Luda
Dendrobium	JC. <i>Den. Woo Leng</i> 2nd. <i>Den. Hibiki</i> 3rd. <i>Den. Little Green Apples</i>	Roger Doug & Klooe Wayne
Paph/Phrag.	JC. <i>Paph.henryanum</i>	Graham & Beryl
Any other Genera	1st. <i>Pira. majestic</i> JC. <i>Cym. Murffin 'Surprise'</i> not listed in O/wiz 2nd. <i>Pyp. Mendenhall</i>	John & Bev George & Helena Col & Marylin
Species Asian	JC. <i>Coel. rochussenii</i> 2nd. <i>Aer. lawrenceae</i> 2nd. <i>Den. polysema</i>	David & Lorraine Duncan Wayne
Species Americas	JC. <i>Hya. gustavi</i> 2nd. <i>C. dormaniana</i> 3rd. <i>Milt. morelaina</i>	Rod & Jan Judy Peter
Aus. Native Hybrid	JC. <i>Den Pearl Vera</i> 2nd. <i>Den. Elegant Autum</i>	Wayne Wayne
Aus. Native Species	1st. <i>Den. bigibbum</i> JC. <i>Den. antenatum</i> 3rd. <i>Den. bigibbum</i>	Col & Marylin Clif Wayne
Novice	JC. <i>Epi. neoporparax</i>	Jean
Foliage	1st. <i>Alocosia cuprea</i> JC. <i>Pothos Snow Queen</i> 2nd. <i>Anthurium Fantasy love</i>	David & Lorraine David & Lorraine David & Lorraine
Plant of the Month	<i>Coel. rochussenii</i>	David & Lorraine
<p>* Names in red are correct to the WCSP list for species And Orchidwiz for Hybrids To reduce the number of future corrections could you please adjust your labels</p> <p><i>Alcra.</i> (Bilra) <i>Snowblind</i> <i>Mtdm.</i> (Vuyd) <i>Mellisa Brianne</i> <i>Arv.</i> (One) <i>Sea Snake</i> <i>Brat.</i> (One) <i>Sadie loo x Mtdm.</i> (Milt) <i>Christmas Eve</i> <i>Den.</i> (Wong) <i>Woo Leng</i></p>		

Nambour Orchid Society



Nambour Orchid Society meets on the 4th Saturday each month Nambour Uniting Church Hall
Coronation Ave., Nambour

Charlie's Cultural corner from 1.15pm to 1.45pm each meeting day.

Cultural meeting 2pm.

Plants are to be tabled for judging by 1.15pm .

Business meeting 1pm 3rd Tuesday of the month at member's homes.

The Species Appreciation Group is held monthly from February to November at member's homes .

Contact the Secretary for details. at nambourorchids@gmail.com

All **STOCQ** members welcome. Bring your species plants, a chair, a cup and a plate to share for afternoon tea

Patron	Graham & Beryl Robertson		
President	George Peever	0420 391 657	
Vice President	Roger Barratt	0439 998 409	
Secretary	Alison Parkes	0438 177855	nambourorchids@gmail.com
Treasurer	Jean Harris	0413 292 504	
Editor	Richard Hand	07 5442 2879	rhand39@gmail.com

All correspondence to the Society should be addressed to nambourorchids@gmail.com

Articles for inclusion in the Newsletter should be sent to the editor at rhand39@gmail.com

Send all adds, articles and photos etc. no later than 2 weeks prior to the monthly meeting

Members may use space in the Newsletter to sell Orchid related items free of charge.

10% commission is payable to the Society by members selling plants at meetings

Members must sell their own plants, only plants that we would use in show displays are permitted

Direct deposits to the Club Bank Account for Shirts, Badges & Membership is preferred.

Commonwealth Bank BSB 064424 A/c No 00909232.

Add your name as a reference so our Treasurer knows who the money is from.

Club shirts are available, cost to members, \$31 for shirt with logo.

Name badges, cost is \$15.00. Please order from secretary

PO Box 140, Nambour QLD 4560 nambourorchids@gmail.com www.nambourorchidsociety.com



Supporters of Cittamani Hospice Services

Cittamani Hospice Services are in Palmwoods and provide end of life palliative care for people in need in their own homes.

They also provide essential equipment free of charge for patients use in their own home.

STOCQ Show Calendar 2022

Please check the relevant society web page for any changes

NOS committment Blue.

February

Fri./Sat. 25/26 QIOF Trade Fair Belmont Shooting Complex 1485 Old Cleaveland Rd Belmont

March

Saturday 19 Maroochydore 1 day closed show Buderim Uniting Church Hall Gloucester Road Buderim

April

Fri./Sat. 1/2 Childers & Isis Charity Show

Fri./Sat. 8/9 Sunshine Coast OS Show Uniting Church Hall, Cnr Ulm & Queen Street Caloundra

Sat/Sun. 9/10 Rockhampton OS Show

Fri./Sat. 15/16 Bribie Island Orchid Show Orchid House, 1st Ave. Bribie Island

Fri/Sat/Sun 15/16/17 Gladstone Orchid & Foliage Show Toyota, Hansen Road, Gladstone

Thurs/Fri/Sat 28/29/30 Caboolture OS closed show Morayfield Shopping Centre

April/May

Sat/Sun.30/1 Gympie OS Show Albert Park Bowls Club Gympie

May

Fri/Sat/Sun 6/7/8 Bundaberg OS Show

Saturday 7 Maroochydore closed 1day Show Bli Bli Uniting Church Hall, Lefoes Road Bli Bli

June

Saturday 4 Nambour OS closed 1 day Show Buderim Uniting Church Hall, Gloucester Road, Buderim

July

Saturday 16 Childers & Isis OS host STOCQ AGM

Fri/Sat 22/23 Caboolture OS show Morayfield Community Centre Morayfield

August

Fri/Sat. 5/6 Maroochydore OS Show Buderim Uniting Church Hall, Gloucester Road, Buderim

Sat/Sun. 13/14 Agnes Water O&FS Show Community Hall, Springs Road Agnes Water

Fri/Sat. 26/27 Aug. Childres & Isis Show

Aug/September

31 Aug. - 4 Sept. AOC Conference & Show Creastmead, Brisbane

September

Fri/Sat. 9/10 Nambour OS Spring Show Uniting Church Hall, Coronation Ave. Nambour

Thurs/Sat 15/16/17 Maryborough OS Show

Fri/Sat/Sun23/24/25 Hervey Bay OS Show

Fri/Sat 23/24 Glasshouse OS Show Beewah Community Hall, Beewah

Sat/Sun 24/25 Rockhampton OS Show

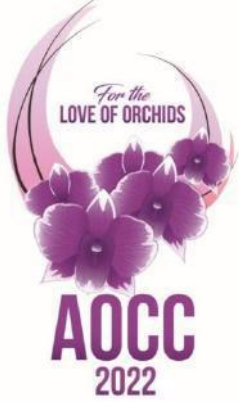
October

Fri/Sat 7/8 Bribie Island OS Show Orchid House, 1st Ave. Bribie Island

November

Saturday 5 Nambour OS Species show Buderim Uniting Church Hall, Gloucester Road, Buderim

Saturday 12 South Burnett hosts SOCQ & OQI meeting



22nd Australian Orchid Council Conference & Show 'For the Love of Orchids'



Major Sponsors



George Hartnett
Metropolitan Funerals

EVENT PARTNER

FLIGHT CENTRE

31 August - 4 September 2022

Planning Committee Update February 2022

Well it's been almost 12 months since the last update, but the staging of the event is now 'just around the corner'. As we had an extra 12 months to plan, a lot of things were just put on hold, while other things, particularly the speakers' program, have had to be completely revamped.

Postal Address:

163 Pine Mountain Road,
BRASSALL QLD 4305

AOCC 2021 Planning Committee Chair

Les Vickers

T. 07 3396 8060

E. lhvickrs@bigpond.net.au

Vice Chair

Ken Haase

M. 0439 397 338

E. khaase@inet.net.au

Hon. Secretary

Colin Noy

T. 0412 274 148

E. colinrndnoy@gmail.com

Treasurer

John Rooks

T. 07 3890 7914

E. johnroo@optusnet.com.au

Lecture Program:

Because of the uncertainty of international travellers being able to attend, we have organised for you a team of first rate Australian speakers, who will share their knowledge on a range of topics and genera.

Professor Kingsley Dixon from Curtin University in WA will present the Keynote Address on ***The Past, Present & Future of Australian Orchid Conservation***. A biologist who is also an active 'community scientist', he has lead the WA Native Orchid Study and Conservation Group and been a member and regular speaker at Wildflower Society meetings across WA.

Dr. Marion Davey, from NT and currently president of the Australian Orchid Council, will present 2 talks: the first on ***Bulbophyllum Growing Techniques***, and then ***The Role of Species in the Breeding of Vandas***.

Gary Yong Gee, a very knowledgeable local from SE Queensland, who has a particular interest in species orchids, will also present 2 talks: one on ***Orchids of Madagascar*** and the other on ***Phalaenopsis Species***.

Michael Coker of Victoria will present talks on ***Paphiopedilums*** and ***Phragmipediums***.

We have a few speakers who will share their knowledge of different types of Dendrobiums. With the range of climactic conditions in Queensland alone, let alone Australia wide, we have experts in Dendrobiums from different sections suited to different regions.

Roslyn Capell from Northern NSW, with her particular interest in inter-sectional Australian and Australasian Dendrobium hybrids, especially those between warm-growing and cool-growing species, will present on ***The Use and Influence of Den. canaliculatum in Australian Native Orchid Hybridising***.