

List



PLANT LIST

Schouten Island Species

Created 17-Jun-13
 Updated 26-May-23
 By Dick Burns

[Goto Photos](#)

Scientific name	status	Common Name	Description
Acacia genistifolia		spreading wattle	<i>shrub; golden flowers in spheres; stiff dagger-like leaves</i>
Acacia longifolia		coastal wattle	<i>dense branched shrub or tree to 5m, bark dark grey, dark on trunk, smooth branches, dense red rod flowers single or in pairs in leaf axils</i>
Acacia melanoxylon		blackwood	<i>tree to 30m; leaves with parallel veins; round flower heads</i>
Acacia mucronata		caterpillar wattle	<i>erect shrub/small tree; leaves narrow linear to 9cm long with short narrow point; yellow flowers in spikes</i>
Acacia myrtifolia		redstem wattle	<i>shrub to 2m; stems red; leaves to 5cm, leathery, single vein; flowers cream in spherical heads</i>
Acacia suaveolens		sweet wattle	<i>shrub to 2 m; phyllodes blue/green to 15 cm; flowers round, cream, in axils, sweet scented.</i>
Acacia terminalis		sunshine wattle	<i>shrub to 4m high; leaves feathery; flowers in bunches of spherical heads</i>
Acacia verticillata		prickly moses	<i>shrub 50cm to 6m high; leaves in whorls, narrow pungent pointed, to 12mm long; flowers in cylindrical yellow spikes</i>
Acrotriche serrulata		ants delight	<i>dark green low shrub; prickly leaves; flowers underneath</i>
Allocasuarina littoralis		black sheoak	<i>tree; fruit like small pine cones; segmented needle-like "leaves"</i>
Allocasuarina monilifera	e	necklace sheoak	<i>shrub to 4m; leaves like tiny teeth around joints in neele-like branchlets; fruit, cylindrical cones with pointed ends</i>
Allocasuarina verticillata		drooping sheoak	<i>tree with "leaves" hanging down or drooping</i>
Alyxia buxifolia		seabox	<i>shrub to 2.5m; leaves tough, dark green, glossy, to 3.5cm; flowers white, 5 petals; fruit orange to red</i>
Amperea xiphoclada		broom spurge	<i>almost leafless with angles stems, forms clumps resembling grass tussock</i>
Aotus ericoides		golden pea	<i>shrub to 1.5m; leaves narrow to 12mm long, margins downrolled; yellow pea flower with red throat</i>
Atriplex cinerea		grey saltbush	<i>shrub to 1.5m high; leaves white/grey, scaly, oblong to 6cm long; flowers unisexual, in dense clusters</i>
Banksia marginata		silver banksia	<i>tree with typical banksia cones or yellow flower spikes</i>
Bauera rubioides		wiry bauera	<i>sprawling wiry shrub; leaves opposite, each with three leaflets; flowers white to pink</i>

List

<i>Bedfordia salicina</i>	e	tasmanian blanketleaf	<i>shrub/tree to 5m; leaves dark green above silver hairy below; yellow daisy flowers in groups</i>
<i>Beyeria viscosa</i>		pinkwood	<i>small tree; inconspicuous flower; female plants have 3-lobed fruit</i>
<i>Billardiera macrantha</i>		forest appleberry	<i>vine clammers over other plants; leaves lance-like to 5cm; flowers tubular, yellow/green; fruit blue/purple</i>
<i>Boronia anemonifolia</i>		stinky boronia	<i>shrub to 2m high; leaves dark green, with 3 leaflets, to 1.5cm long; flowers 4-petalled, white/pink</i>
<i>Boronia pilosa</i>		hairy boronia	<i>shrub to 1m; leaves divided with 3-7 leaflets; flowers white to pink with four petals</i>
<i>Bossiaea cinerea</i>		showy bossia	<i>shrub with gold/brown pea flowers</i>
<i>Bossiaea cordigera</i>		wiry bossia	<i>shrub to 40cm; leaves small, heart-shaped; pea flowers yellow with red centre & outside</i>
<i>Bossiaea prostrata</i>		creeping bossia	<i>wiry prostrate stems; yellow & crimson pea flowers</i>
<i>Bursaria spinosa</i>		prickly box	<i>small tree; distinctive "purses" (seed cases); white starry flowers</i>
<i>Callitris rhomboidea</i>		oyster bay pine	<i>Narrow tree to 6m, green leaves to 2-5mm in whorls of 3, pear shaped female cones 2cm, with 6 pointed scales of sililar size</i>
<i>Calytrix tetragona</i>		common fringemyrtle	<i>shrub; star-like white flowers</i>
<i>Carpobrotus rossii</i>		native pigface	<i>herb, prostrate, spreading; leaves fleshy, triangular x-section; flowers large, pink/purple, white centres</i>
<i>Cassytha glabella</i>		slender dodderlaurel	<i>slender parasitic twiner; appears leafless; tiny white flowers in bunches on short stalks</i>
<i>Cassytha melantha</i>		large dodderlaurel	<i>"monkey twine", parasitic on other plants</i>
<i>Chrysocephalum apiculat</i>		common everlasting	<i>perennial herb to 50cm; stem & leaves densely hairy; golden daisy flowers in clusters</i>
<i>Clematis aristata</i>		mountain clematis	<i>climber; leaves multi-lobed; large white star-like flowers</i>
<i>Clematis gentianoides</i>		ground clematis	<i>herb to 50cm tall; large star-like white flowers</i>
<i>Comesperma volubile</i>		blue lovecreeper	<i>wiry climber; small leaves; blue flowers along stems</i>
<i>Conospermum hookeri</i>	e	tasmanian smokebush	<i>ozothamnus-like bush, distinctive white flowers</i>
<i>Correa alba</i>		white correa	<i>coastal shrub/tree to 3 m; leaves green/grey, oval to round, hairy, to 4 cm; flowers white, starry, with curved petals and prominent stamens.</i>
<i>Correa reflexa</i>		common correa	<i>shrub, variable from prostrate to 3 m; leaves to 5 cm, reflexed with indented veins; flowers tubular, pendant, greenish.</i>
<i>Dampiera stricta</i>		blue dampiera	<i>Herb to 45cm; lower leaves wedged, upper narrow 15mm, alternate, notched, hairy; small blue flowers with yellow throat, underside hairy</i>
<i>Daviesia ulicifolia</i>		yellow spiky bitterpea	<i>prickly woody shrub to 2 m; leaves spiky to 3 cm; yellow pea flowers with reddish markings.</i>

List

<i>Dianella brevicaulis</i>		shortstem flaxlily	<i>strap-like leaves; blue & yellow flowers; blue berries, stamen tips dark</i>
<i>Dianella tasmanica</i>		forest flaxlily	<i>perennial to 1.5m; leaves long, narrow, margins serrated; flowers on long stalks, 6-petalled, blue; fruit a blue/purple shiny berry</i>
<i>Dichondra repens</i>		kidneyweed	<i>creeping herb, forming patches; kidney shaped leaves; tiny green/white flowers</i>
<i>Dillwynia glaberrima</i>		smooth parrotpea	<i>slender shrub to 90cm; leaves hairless, narrow cylindrical; golden pea flowers</i>
<i>Disphyma crassifolium</i>		roundleaf pigface	<i>fleshy, perennial, prostrate herb; leaves circular in x-section; flowers pink/white, 3-4cm diam</i>
<i>Dodonaea viscosa</i>		native hop	<i>shrub/small tree to 6m high; leaves glossy, oblong, to 6cm long; flowers small, yellow; fruit 3-winged, green to reddish</i>
<i>Drosera auriculata</i>		tall sundew	<i>herb; fine stem; leaves fringed with glistening hairs</i>
<i>Drosera pygmaea</i>		dwarf sundew	<i>tiny carnivorous herb; leaves round, fringed with hairs, in basal rosette; tiny single white flower</i>
<i>Epacris barbata</i>		bearded heath	<i>Woody shrub to 1.2m; long leathery pointed leaves 2-5mm; flowers white, tubular with red/brown silky sepals</i>
<i>Epacris impressa</i>		common heath	<i>shrub; white, red or pink tubular flowers with dimples at base</i>
<i>Epacris lanuginosa</i>		swamp heath	<i>erect narrow shrub to 1.5m; leaves narrow lance-shaped with sharp point; flowers white, tubular in clusters</i>
<i>Epacris marginata</i>	e	rigid heath	<i>erect much branched shrub to 90 cm; leaves sharply pointed, to 12 mm with distinct margin; flowers white with stamens above throat, crowded towards ends of branches, scented.</i>
<i>Epacris myrtifolia</i>		cliff heath	<i>bushy hairy shrub to 1 m; leaves ovate, thick; flowers white with stamens at throat, crowded towards end of stems.</i>
<i>Epacris tasmanica</i>		eastern heath	<i>erect woody bush to 2m, shiny rounded and pointed leaves, single white 5-petalled tubular flowers in the axils towards top of stems</i>
<i>Eucalyptus amygdalina</i>	e	black peppermint	<i>tree 15 to 30 m with fine rough bark; leaves narrow; buds 7-15+</i>
<i>Eucalyptus globulus</i>		tasmanian bluegum	<i>tree to 70m high, trunk rough at base, smooth, greyish/white above; leaves lance-shaped to 30cm long; fruit large, ribbed</i>
<i>Eucalyptus pulchella</i>		white peppermint	<i>Small tree to 20m, smooth white-grey bark, very narrow leaves 5-10cm, 5mm buds in clusters up to 18, nuts with valves level with rim</i>
<i>Euchiton involucratus</i>		star cottonleaf	<i>herb with white hairy stem to 40cm high; leaves white under; flowers in dense globular heads</i>
<i>Euryomyrtus ramosissima</i>		rosy heathmyrtle	<i>shrub to 50cm; leaves linear to 10mm; flowers ca 10mm diam, 5 white/pink petals</i>
<i>Exocarpos cupressiformis</i>		common native-cherry	<i>tree; conifer-like foliage; edible orange coloured fruit</i>

List

<i>Ficinia nodosa</i>		knobby clubsedge	<i>densely tufted rush-like sedge to 90cm; flowers/fruit in compact grey/brown globular head</i>
<i>Gahnia grandis</i>		cutting grass	<i>tufted perennial with narrow grass-like leaves with sharp, rough edges; flowers in spikes on culms to 3m</i>
<i>Glycine clandestina</i>		twining glycine	<i>climber with trifoliolate leaves & purple flowers</i>
<i>Gompholobium huegelii</i>		common wedgepea	<i>herb; pea flower yellow inside and blackish outside</i>
<i>Gonocarpus teucrioides</i>		forest raspwort	<i>perennial herb to 60 cm; leaves oval and rough to touch; flowers on leafy spikes with petals often fallen.</i>
<i>Goodenia ovata</i>		hop native-primrose	<i>shrub to 2m; leaves bright green, to 6cm, edges toothed; flowers yellow with petals in two groups</i>
<i>Gymnoschoenus sphaeroc</i>		buttongrass	<i>sedge with dense tufts of leaves to 60cm high; flowers in tight spherical clusters on stalks to 100cm high</i>
<i>Hakea lissosperma</i>		mountain needlebush	<i>small tree to 6m; leaves cylindrical sharply pointed; flowers white; fruit almost round with short beak and warty surface</i>
<i>Hakea megadenia</i>	e	autumn needlebush	<i>Woody shrub to 7m, leaves long, cylindrical alternate, sharply pointed; cream spider like flowers; woody S shaped fruit</i>
<i>Hakea teretifolia</i>		dagger hakea	<i>Woody shrub to 4m, rigid, cylindrical leaves sharply pointed, scented white spider-flowers, dagger shaped fruit with sharp warts at base</i>
<i>Hibbertia procumbens</i>		spreading guineaflower	<i>prostrate shrub spreading to 30cm; leaves to 2cm long, edges rolled under; flowers large, yellow very numerous</i>
<i>Hibbertia riparia</i>		erect guineaflower	<i>shrub; narrow leaves; golden 5-petalled flowers</i>
<i>Indigofera australis</i>		native indigo	<i>shrub to 1.5m high; leaves feather-like, to 10 leaflets; pea flowers pink/mauve, crowded along branches</i>
<i>Isopogon ceratophyllus</i>		horny conebrush	<i>Prickly shrub to 60cm; stiff, spiley, branching leaves; yellow flowers at end of stem often hidden in leaves</i>
<i>Kennedia prostrata</i>		running postman	<i>herb; prostrate & sprawling; leaves with 3 leaflets; crimson pea flower</i>
<i>Kunzea ambigua</i>		white kunzea	<i>shrub to 4m; masses of white flowers; leaves narrow, tufted</i>
<i>Lagenophora stipitata</i>		blue bottledaisy	<i>rosette herb; leaves hairy, to 8cm long; single flower head white or purplish on long hairy stem</i>
<i>Lasiopetalum macrophyll</i>		shrubby velvetbush	<i>shrub to 2m high; leaves ovate to 10cm long, rusty hairs along veins, white/green under; flowers small, white, in pendant clusters</i>
<i>Leptospermum glaucescens</i>	e	smoky teatree	<i>upright shrub/tree to 8m; leaves grey-green to 2cm; flowers white with red centres; fruit small, reddish, leathery</i>
<i>Leptospermum grandiflor</i>		autumn teatree	<i>large shrub to 5 m; leaves grey/green; flowers large white about 3 cm across.</i>

List

Leptospermum lanigerum	woolly teatree	<i>shrub or small tree; leaves hairy; flowers white, hairy at base; fruit hairy at base</i>
Leptospermum scoparium	common teatree	<i>shrub to 4m; leaves to 2cm with prickly pointed tips; flowers white; fruit with 5 slits, top convex, woody</i>
Leucophyta brownii	cushionbush	<i>compact shrub to 1.5m; leaves stem-clasping, to 5mm; flowers white/yellow globular heads</i>
Leucopogon australis	spike beardheath	<i>shrub to 2m; leaves lance-shaped to 4cm; flowers white, tubular, bearded inside</i>
Leucopogon collinus	white beardheath	<i>shrub to 50cm; leaves with edges turned down; flowers tiny, tubular, bearded inside, in clusters at ends of branches</i>
Leucopogon parviflorus	coast beardheath	<i>shrub to 3m; leaves to 3cm, blunt pointed, margins rolled down; flowers white, tubular, bearded inside</i>
Lissanthe strigosa	peachberry	<i>shrub; 50 cm tall; prickly leaves; flowers pink in bud then white tubular</i>
Lomandra longifolia	sagg	<i>tussock of strap-like leaves with notched ends; flowers in spiny clusters</i>
Lomatia tinctoria	e guitarplant	<i>shrub; divided leaves very variable in form; white flowers</i>
Melaleuca pallida	yellow bottlebrush	<i>shrub/tree to 5 m; leaves blue/green; flowers yellow bottlebrush to 8 cm long.</i>
Melaleuca squamea	swamp honeymyrtle	<i>shrub to 3m; leaves to 8mm, hairy; flowers mauve/white in terminal globular heads</i>
Monotoca elliptica	tree broomheath	<i>Shrub to 5m; leaves slight-convex, oblong to 25mm, dark green above white below; flowers white tubular in clusters towards branch ends</i>
Monotoca glauca	goldey wood	<i>shrub to 3m; leaves to 10mm, sharp points; flowers white, 5 petalled, in small groups</i>
Muehlenbeckia gunnii	forest lignum	<i>woody twining climber to 10m high; leaves arrow-shaped, to 7cm long; flowers to 9mm diam, in groups of 2-6</i>
Myoporum insulare	common boobialla	<i>coastal shrub/tree to 3 m; leaves elliptic to 8 cm; flowers 5 white petals with magenta spots.</i>
Notelaea ligustrina	native olive	<i>small tree; leaves lance-shaped to 5cm; small green to purple fruit</i>
Olearia ciliata	fringed daisybush	<i>shrub to 40 cm; narrow leaves; solitary white to mauve flowers on long stem</i>
Olearia ramulosa	twiggy daisybush	<i>shrub to 2 m; leaves small with rolled edges; flowers white, numerous with 6-10 ray florets.</i>
Olearia viscosa	viscid daisybush	<i>shrub to 2m; leaves elliptical, 5-8cm long, sticky, dark green above, light green, hairy under; daisy flower heads with 4-6 white "petals" in crowded terminal clusters</i>
Ozothamnus ferrugineus	tree everlastingbush	<i>shrub to 5m; leaves crowded variable, 2-7cm; small white daisy flowers in compact terminal heads</i>
Ozothamnus obcordatus	yellow everlastingbush	<i>Shrub .5-1.5m, heart-shaper alternate leaves, glossy on top, hairy below, terminal tight clusters of yellow flowers massed in spring</i>

List

<u>Ozothamnus reticulatus</u>	e	veined everlastingbush	<i>open shrub to 3 m; leaves linear to 6 cm with depressed vein; small white daisy flowers in dense heads to 6 cm across.</i>
<u>Ozothamnus scutellifolius</u>	e		<i>Small, sticky shrub to 1.5m; tiny dark green leaves wart-like on white stem; flowers 3mm creamy white with light brown bracts</i>
<u>Pelargonium australe</u>		southern storksbill	<i>herb growing in rock crevices; leaves kidney-shaped; flowers pink/white</i>
<u>Pentachondra involucreatæ</u>		forest frillyheath	<i>shrub to 40cm; leaves elliptical to 2cm; flowers white, petals hairy inside, clustered in small groups at ends of branches</i>
<u>Persoonia juniperina</u>		prickly geebung	<i>shrub; to 1.5 m tall; light green prickly leaves; delicate golden flowers</i>
<u>Phragmites australis</u>		southern reed	<i>perennial grass, to 3m high, aquatic or in wet mud; flower head to 40cm long, brown, soft, dense</i>
<u>Pittosporum bicolor</u>		cheesewood	<i>tree to 8m, conical habit; leaves dark green above, lighter below; flowers bell-shaped, brown & yellow</i>
<u>Platylobium triangulare</u>		arrow flatpea	<i>scrambling shrub; leaves triangular with sharp tips; flowers orange/yellow pea with bracts that don't conceal the stem.</i>
<u>Poa labillardierei</u>		tussock grass	<i>Large, coarse, densely tufted perennial; flower stems rounded, erect, flowers cream or brown above the leaves</i>
<u>Pomaderris elliptica</u>	e	dogwood	<i>Shrub/tree to 10m, ovate leaves - tops veins indented, below hairy and veins prominent, cream flowers in branching cymes, no petals</i>
<u>Pteridium esculentum</u>		bracken	<i>common fern to 2.5m tall; leathery much divided frond</i>
<u>Pultenaea pedunculata</u>		matted bushpea	<i>shrub; prostrate; golden pea flowers on stalks</i>
<u>Rhagodia candolleana</u>		coastal saltbush	<i>scrambling shrub to 2 m; leaves fleshy, oval to arrow shaped; flowers terminal clusters followed by flat dark red fruits.</i>
<u>Rhytidosporum procumbens</u>		starry appleberry	<i>dwarf shrub to 10 cm; leaves crowded, stalkless, dark green; flowers starry with 5 white petals</i>
<u>Senecio hispidulus</u>		rough fireweed	<i>herb to 1.25m; leaf with rough upper surface; small flower heads without "petals"</i>
<u>Senecio minimus</u>		shrubby fireweed	<i>perennial herb to 1.2m high; leaves vble, toothed, lower ones broader, lanceolate, to 15cm long; flower heads without "petals", yellow, numerous</i>
<u>Solanum laciniatum</u>		kangaroo apple	<i>shrub; lobed leaves; large purple flowers; yellow/orange fruit</i>
<u>Spinifex sericeus</u>		beach spinifex	<i>perennial grass, with long, prostrate, creeping stems; male flowers in hemispherical heads; female flowers in large spherical, spiky heads</i>
<u>Sprengelia incarnata</u>		pink swampheath	<i>erect shrub to 2m; leaves hard, pointed, sheathing stem; flowers pink/white, in terminal clusters</i>

List

<u>Spyridium obovatum</u>	e	smooth dustymiller	<i>shrub/tree 1-15 m; leaves obovate to 2 cm; cream flowers small in compact heads with single floral leaf.</i>
<u>Spyridium obovatum</u>	e		<i>shrub/tree 1-15 m; leaves obovate to 2 cm; yellow flowers small in compact heads with single floral leaf.</i>
<u>Spyridium vexilliferum</u>	r	helicopter bush	<i>shrub to 1m; tiny flowers surrounded by three white bracts</i>
<u>Stylidium armeria</u>		coastal triggerplant	<i>robust herb; leaves to 25 cm in basal rosette; flowers pink/magenta in spike to 50 cm or more.</i>
<u>Stylidium graminifolium</u>		narrowleaf triggerplant	<i>herb to 50cm; leaves narrow, strap-like; flowers pink, four-petalled, in spikes</i>
<u>Styphelia ericoides</u>		pink beardheath	<i>erect woody shrub to 1m; leaves to 13mm, edges turned down; flowers numerous along branches, white, tubular, hairy inside</i>
<u>Styphelia humifusa</u>		native cranberry	<i>ground cover; prickly leaves; red tube flowers in winter</i>
<u>Tasmannia lanceolata</u>		mountain pepper	<i>tree to 5m; leaves lance-shaped on red stems; flowers yellow; fruit red turning black</i>
<u>Tetragonia implexicoma</u>		bower spinach	<i>sprawling undershrub; leaves diamond shaped, succulent to 4 cm; flowers yellow with 4 petals, on long stems.</i>
<u>Tetratheca labillardierei</u>		glandular pinkbells	<i>Glandular, hairy shrub to 50cm; leaves alternate, 6-10mm, dark green, rough, finely toothed; flowers mauve bells with black stamens.</i>
<u>Tetratheca pilosa</u>		broadleaf hairy pinkbells	<i>shrub to 60 cm tall; stems with fine white hairs; pink flowers pendulous on stalks</i>
<u>Themeda triandra</u>		kangaroo grass	<i>Tufted perennial grass, up to 120cm</i>
<u>Veronica derwentiana</u>			<i>perennial herb to 1.5m high; leaves lance-shaped, 6-12cm long; flowers 4-petalled, pale blue or white, in dense spikes</i>
<u>Veronica gracilis</u>		slender speedwell	<i>herb to 10cm; leaves narrow lance-shaped, to 3.5cm; flowers blue, four petalled</i>
<u>Viola hederacea</u>		ivyleaf violet	<i>herb; perennial, spreading; kidney shaped leaves; violet flowers on stalks</i>
<u>Wahlenbergia gracilentia</u>		annual bluebell	<i>herb; dark blue star-like flowers</i>
<u>Wahlenbergia multicaulis</u>		bushy bluebell	<i>Small herb to 40cm, visible only when flowering; sparse leaves on hairy branched stem; blue, funnel flowers 5 petals, petals striped.</i>
<u>Xanthosia ternifolia</u>		shrubby crossherb	<i>small shrub; leaves 3-lobed, hairy; flowers tiny, in groups</i>
<u>Xanthosia tridentata</u>		hill crossherb	<i>shrub to 30cm high; leaves 6-15mm long, apex 3-notched; flowers in groups of 1-3</i>



PLANT LIST
Schouten Island Species

Created 17-Jun-13
Updated 26-May-23
By Dick Burns

[Goto List](#)



GJ [*Acacia genistifolia*](#)

spreading wattle
shrub; golden flowers in spheres; stiff dagger-like leaves



AS [*Acacia longifolia*](#)

subsp. *sophorae*
coastal wattle
dense branched shrub or tree to 5m, bark dark grey, dark on trunk, smooth branches, dense red rod flowers single or in pairs in leaf axils



GJ [*Acacia melanoxylon*](#)

blackwood
tree to 30m; leaves with parallel veins; round flower heads



RW *Acacia mucronata*

subsp. mucronata

caterpillar wattle

erect shrub/small tree; leaves narrow linear to 9cm long with short narrow point; yellow flowers in spikes



GJ *Acacia myrtifolia*

redstem wattle

shrub to 2m; stems red; leaves to 5cm, leathery, single vein; flowers cream in spherical heads



GJ *Acacia suaveolens*

sweet wattle

shrub to 2 m; phyllodes blue/green to 15 cm; flowers round, cream, in axils, sweet scented.



GJ *Acacia terminalis*

sunshine wattle

shrub to 4m high; leaves feathery; flowers in bunches of spherical heads



GJ *Acacia verticillata*

subsp. verticillata

prickly moses

shrub 50cm to 6m high; leaves in whorls, narrow pungent pointed, to 12mm long; flowers in cylindrical yellow spikes



GJ [*Acrotriche serrulata*](#)

ants delight
dark green low shrub; prickly leaves; flowers underneath



RS? [*Allocasuarina littoralis*](#)

black sheoak
tree; fruit like small pine cones; segmented needle-like
"leaves"



GJ [*Allocasuarina monilifera*](#)

necklace sheoak
shrub to 4m; leaves like tiny teeth around joints in neele-like
branchlets; fruit, cylindrical cones with pointed ends



GJ [*Allocasuarina verticillata*](#)

drooping sheoak
tree with "leaves" hanging down or drooping



GJ [*Alyxia buxifolia*](#)

seabox
shrub to 2.5m; leaves tough, dark green, glossy, to 3.5cm;
flowers white, 5 petals; fruit orange to red



GJ [*Amperea xiphioclada*](#)

broom spurge
almost leafless with angles stems, forms clumps resembling
grass tussock



GJ [*Aotus ericoides*](#)

golden pea
shrub to 1.5m; leaves narrow to 12mm long, margins
downrolled; yellow pea flower with red throat



GJ [*Atriplex cinerea*](#)

grey saltbush
shrub to 1.5m high; leaves white/grey, scaly, oblong to 6cm
long; flowers unisexual, in dense clusters



GJ [*Banksia marginata*](#)

silver banksia
tree with typical banksia cones or yellow flower spikes



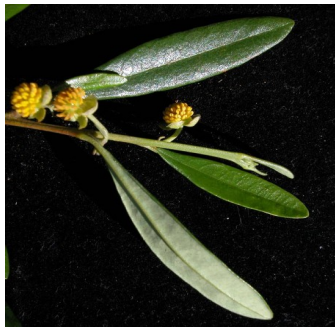
GJ [*Bauera rubioides*](#)

wiry bauera
sprawling wiry shrub; leaves opposite, each with three leaflets;
flowers white to pink



GJ [*Bedfordia salicina*](#)

tasmanian blanketleaf
shrub/tree to 5m; leaves dark green above silver hairy below;
yellow daisy flowers in groups



GJ [*Beyeria viscosa*](#)

pinkwood
small tree; inconspicuous flower; female plants have 3-lobed
fruit



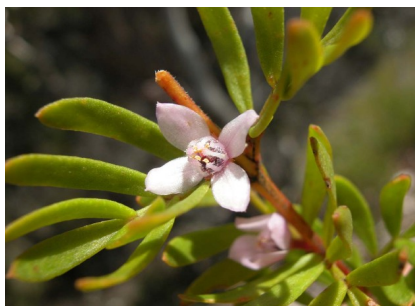
GJ [*Billardiera macrantha*](#)

forest appleberry
vine clammers over other plants; leaves lance-like to 5cm;
flowers tubular, yellow/green; fruit blue/purple



GJ [*Boronia anemonifolia*](#)

stinky boronia
shrub to 2m high; leaves dark green, with 3 leaflets, to 1.5cm
long; flowers 4-petalled, white/pink



GJ [*Boronia pilosa*](#)

subsp. pilosa
hairy boronia
shrub to 1m; leaves divided with 3-7 leaflets; flowers white to
pink with four petals



GJ [*Bossiaea cinerea*](#)

showy bossia
shrub with gold/brown pea flowers



GJ [*Bossiaea cordigera*](#)

wiry bossia
shrub to 40cm; leaves small, heart-shaped; pea flowers yellow
with red centre & outside



GJ [*Bossiaea prostrata*](#)

creeping bossia
wiry prostrate stems; yellow & crimson pea flowers



GJ [*Bursaria spinosa*](#)

prickly box
small tree; distinctive "purses" (seed cases); white starry
flowers



GJ [*Callitris rhomboidea*](#)

oyster bay pine
Narrow tree to 6m, green leaves to 2-5mm in whorls of 3, pear
shaped female cones 2cm, with 6 pointed scales of similar size



BC [*Calytrix tetragona*](#)

common fringemyrtle
shrub; star-like white flowers



GJ [*Carpobrotus rossii*](#)

native pigface
herb, prostrate, spreading; leaves fleshy, triangular x-section;
flowers large, pink/purple, white centres



GJ [*Cassytha glabella*](#)

slender dodderlaurel
slender parasitic twiner; appears leafless; tiny white flowers in
bunches on short stalks



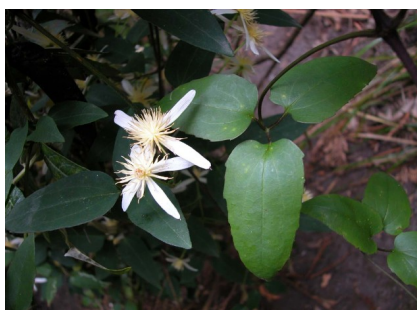
GJ [*Cassytha melantha*](#)

large dodderlaurel
"monkey twine", parasitic on other plants



GJ [*Chrysocephalum apiculatum*](#)

common everlasting
perennial herb to 50cm; stem & leaves densely hairy; golden
daisy flowers in clusters



GJ *Clematis aristata*

mountain clematis
climber; leaves multi-lobed; large white star-like flowers



GJ *Clematis gentianoides*

ground clematis
herb to 50cm tall; large star-like white flowers



GJ *Comesperma volubile*

blue lovecreeper
wiry climber; small leaves; blue flowers along stems



GJ *Conospermum hookeri*

tasmanian smokebush
ozothamnus-like bush, distinctive white flowers



AS *Correa alba*

var. alba
white correa
coastal shrub/tree to 3 m; leaves green/grey, oval to round,
hairy, to 4 cm; flowers white, starry, with curved petals and
prominent stamens.



GJ *Correa reflexa*

var. reflexa

common correa

shrub, variable from prostrate to 3 m; leaves to 5 cm, reflexed with indented veins; flowers tubular, pendant, greenish.



GJ *Dampiera stricta*

blue dampiera

Herb to 45cm; lower leaves wedged, upper narrow 15mm, alternate, notched, hairy; small blue flowers with yellow throat, underside hairy



RW *Daviesia ulicifolia*

yellow spiky bitterpea

prickly woody shrub to 2 m; leaves spiky to 3 cm; yellow pea flowers with reddish markings.



GJ *Dianella brevicaulis*

shortstem flaxlily

strap-like leaves; blue & yellow flowers; blue berries, stamen tips dark



BC *Dianella tasmanica*

forest flaxlily

perennial to 1.5m; leaves long, narrow, margins serrated; flowers on long stalks, 6-petalled, blue; fruit a blue/purple shiny berry



GJ [*Dichondra repens*](#)

kidneyweed
creeping herb, forming patches; kidney shaped leaves; tiny green/white flowers



GJ [*Dillwynia glaberrima*](#)

smooth parrotpea
slender shrub to 90cm; leaves hairless, narrow cylindrical; golden pea flowers



AS [*Disphyma crassifolium*](#)

subsp. clavellatum
roundleaf pigface
fleshy, perennial, prostrate herb; leaves circular in x-section; flowers pink/white, 3-4cm diam



gj [*Dodonaea viscosa*](#)

subsp. spatulata
native hop
shrub/small tree to 6m high; leaves glossy, oblong, to 6cm long; flowers small, yellow; fruit 3-winged, green to reddish



GJ [*Drosera auriculata*](#)

tall sundew
herb; fine stem; leaves fringed with glistening hairs



GJ [Drosera pygmaea](#)

dwarf sundew
tiny carnivorous herb; leaves round, fringed with hairs, in basal rosette; tiny single white flower



GJ [Epacris barbata](#)

bearded heath
Woody shrub to 1.2m; long leathery pointed leaves 2-5mm; flowers white, tubular with red/brown silky sepals



GJ [Epacris impressa](#)

common heath
shrub; white, red or pink tubular flowers with dimples at base



GJ [Epacris lanuginosa](#)

swamp heath
erect narrow shrub to 1.5m; leaves narrow lance-shaped with sharp point; flowers white, tubular in clusters



GJ [Epacris marginata](#)

rigid heath
erect much branched shrub to 90 cm; leaves sharply pointed, to 12 mm with distinct margin; flowers white with stamens above throat, crowded towards ends of branches, scented.



GJ [*Epacris myrtifolia*](#)

cliff heath

bushy hairy shrub to 1 m; leaves ovate, thick; flowers white with stamens at throat, crowded towards end of stems.



GJ [*Epacris tasmanica*](#)

eastern heath

erect woody bush to 2m, shiny rounded and pointed leaves, single white 5-petalled tubular flowers in the axils towards top of stems



GJ [*Eucalyptus amygdalina*](#)

black peppermint

tree 15 to 30 m with fine rough bark; leaves narrow; buds 7-15+



GJ [*Eucalyptus globulus*](#)

tasmanian bluegum

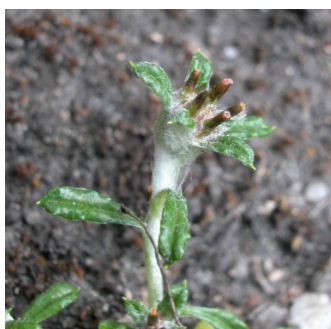
tree to 70m high, trunk rough at base, smooth, greyish/white above; leaves lance-shaped to 30cm long; fruit large, ribbed



GJ [*Eucalyptus pulchella*](#)

white peppermint

Small tree to 20m, smooth white-grey bark, very narrow leaves 5-10cm, 5mm buds in clusters up to 18, nuts with valves level with rim



GJ *Euchiton involucratus*

star cottonleaf
herb with white hairy stem to 40cm high; leaves white under;
flowers in dense globular heads



GJ *Euryomyrtus ramosissima*

rosy heathmyrtle
shrub to 50cm; leaves linear to 10mm; flowers ca 10mm diam,
5 white/pink petals



GJ *Exocarpos cupressiformis*

common native-cherry
tree; conifer-like foliage; edible orange coloured fruit



GJ *Ficinia nodosa*

knobby clubsedge
densely tufted rush-like sedge to 90cm; flowers/fruit in
compact grey/brown globular head



GJ *Gahnia grandis*

cutting grass
tufted perennial with narrow grass-like leaves with sharp,
rough edges; flowers in spikes on culms to 3m



GJ [*Glycine clandestina*](#)

twining glycine
climber with trifoliate leaves & purple flowers



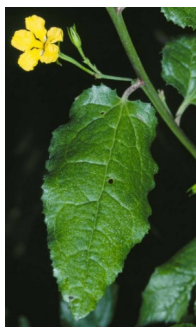
BC [*Gompholobium huegelii*](#)

common wedgepea
herb; pea flower yellow inside and blackish outside



GW [*Gonocarpus teucroides*](#)

forest raspwort
perennial herb to 60 cm; leaves oval and rough to touch;
flowers on leafy spikes with petals often fallen.



GJ [*Goodenia ovata*](#)

hop native-primrose
shrub to 2m; leaves bright green, to 6cm, edges toothed;
flowers yellow with petals in two groups



GJ [*Gymnoschoenus sphaerocephalus*](#)

buttongrass
sedge with dense tufts of leaves to 60cm high; flowers in tight
spherical clusters on stalks to 100cm high



GJ [Hakea lissosperma](#)

mountain needlebush
small tree to 6m; leaves cylindrical sharply pointed; flowers white; fruit almost round with short beak and warty surface



GJ [Hakea megadenia](#)

autumn needlebush
Woody shrub to 7m, leaves long, cylindrical alternate, sharply pointed; cream spider like flowers; woody S shaped fruit



GJ [Hakea teretifolia](#)

subsp. *hirsuta*
dagger hakea
Woody shrub to 4m, rigid, cylindrical leaves sharply pointed, scented white spider-flowers, dagger shaped fruit with sharp warts at base



RS [Hibbertia procumbens](#)

spreading guineaflower
prostrate shrub spreading to 30cm; leaves to 2cm long, edges rolled under; flowers large, yellow very numerous



BC [Hibbertia riparia](#)

erect guineaflower
shrub; narrow leaves; golden 5-petalled flowers



RW *Indigofera australis*

native indigo
shrub to 1.5m high; leaves feather-like, to 10 leaflets; pea
flowers pink/mauve, crowded along branches



GJ *Isopogon ceratophyllus*

horny conebush
Prickly shrub to 60cm; stiff, spiley, branching leaves; yellow
flowers at end of stem often hidden in leaves



GJ *Kennedia prostrata*

running postman
herb; prostrate & sprawling; leaves with 3 leaflets; crimson pea
flower



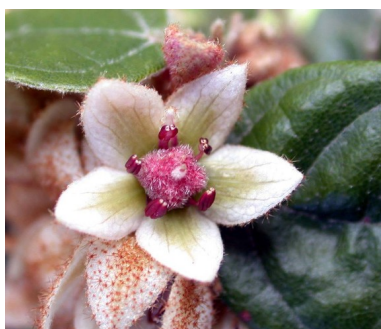
GJ *Kunzea ambigua*

white kunzea
shrub to 4m; masses of white flowers; leaves narrow, tufted



RS *Lagenophora stipitata*

blue bottledaisy
rosette herb; leaves hairy, to 8cm long; single flower head
white or purplish on long hairy stem



GJ [*Lasiopetalum macrophyllum*](#)

shrubby velvetbush
shrub to 2m high; leaves ovate to 10cm long, rusty hairs along veins, white/green under; flowers small, white, in pendant clusters



GJ [*Leptospermum glaucescens*](#)

smoky teatree
upright shrub/tree to 8m; leaves grey-green to 2cm; flowers white with red centres; fruit small, reddish, leathery



GJ [*Leptospermum grandiflorum*](#)

autumn teatree
large shrub to 5 m; leaves grey/green; flowers large white about 3 cm across.



RS [*Leptospermum lanigerum*](#)

woolly teatree
shrub or small tree; leaves hairy; flowers white, hairy at base; fruit hairy at base



GJ [*Leptospermum scoparium*](#)

common teatree
shrub to 4m; leaves to 2cm with prickly pointed tips; flowers white; fruit with 5 slits, top convex, woody



GJ [*Leucophyta brownii*](#)

cushionbush
compact shrub to 1.5m; leaves stem-clasping, to 5mm;
flowers white/yellow globular heads



GJ [*Leucopogon australis*](#)

spike beardheath
shrub to 2m; leaves lance-shaped to 4cm; flowers white,
tubular, bearded inside



BC [*Leucopogon collinus*](#)

white beardheath
shrub to 50cm; leaves with edges turned down; flowers tiny,
tubular, bearded inside, in clusters at ends of branches



GJ [*Leucopogon parviflorus*](#)

coast beardheath
shrub to 3m; leaves to 3cm, blunt pointed, margins rolled
down; flowers white, tubular, bearded inside



GJ [*Lissanthe strigosa*](#)

peachberry
shrub; 50 cm tall; prickly leaves; flowers pink in bud then white
tubular



GJ [*Lomandra longifolia*](#)

sagg
tussock of strap-like leaves with notched ends; flowers in spiny clusters



GJ [*Lomatia tinctoria*](#)

guitarplant
shrub; divided leaves very variable in form; white flowers



GJ [*Melaleuca pallida*](#)

yellow bottlebrush
shrub/tree to 5 m; leaves blue/green; flowers yellow
bottlebrush to 8 cm long.



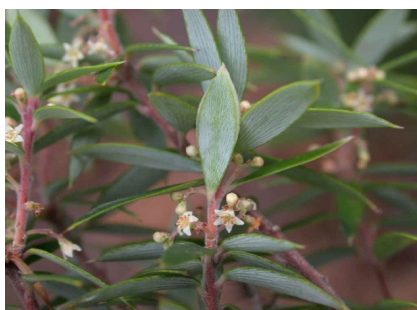
GJ [*Melaleuca squamea*](#)

swamp honeymyrtle
shrub to 3m; leaves to 8mm, hairy; flowers mauve/white in
terminal globular heads



GJ [*Monotoca elliptica*](#)

tree broomheath
Shrub to 5m; leaves slight-convex, oblong to 25mm, dark
green above white below; flowers white tubular in clusters
towards branch ends



RW [Monotoca glauca](#)

goldey wood
shrub to 3m; leaves to 10mm, sharp points; flowers white, 5
petalled, in small groups



[Muehlenbeckia gunnii](#)

forest lignum
woody twining climber to 10m high; leaves arrow-shaped, to
7cm long; flowers to 9mm diam, in groups of 2-6



GJ [Myoporum insulare](#)

common boobialla
coastal shrub/tree to 3 m; leaves elliptic to 8 cm; flowers 5
white petals with magenta spots.



GJ [Notelaea ligustrina](#)

native olive
small tree; leaves lance-shaped to 5cm; small green to purple
fruit



GJ [Olearia ciliata](#)

fringed daisybush
shrub to 40 cm; narrow leaves; solitary white to mauve flowers
on long stem



GJ *Olearia ramulosa*

twiggy daisybush
shrub to 2 m; leaves small with rolled edges; flowers white,
numerous with 6-10 ray florets.



GJ *Olearia viscosa*

viscid daisybush
shrub to 2m; leaves elliptical, 5-8cm long, sticky, dark green
above, light green, hairy under; daisy flower heads with 4-6
white "petals" in crowded terminal clusters



RW *Ozothamnus ferrugineus*

tree everlastingbush
shrub to 5m; leaves crowded variable, 2-7cm; small white
daisy flowers in compact terminal heads



GJ *Ozothamnus obcordatus*

yellow everlastingbush
Shrub .5-1.5m, heart-shaper alternate leaves, glossy on top,
hairy below, terminal tight clusters of yellow flowers massed in
spring



GJ *Ozothamnus reticulatus*

veined everlastingbush
open shrub to 3 m; leaves linear to 6 cm with depressed vein;
small white daisy flowers in dense heads to 6 cm across.



BC [*Ozothamnus scutellifolius*](#)

Small, sticky shrub to 1.5m; tiny dark green leaves wart-like on white stem; flowers 3mm creamy white with light brown bracts



GJ [*Pelargonium australe*](#)

southern storksbill
herb growing in rock crevices; leaves kidney-shaped; flowers pink/white



GJ [*Pentachondra involucreta*](#)

forest frillyheath
shrub to 40cm; leaves elliptical to 2cm; flowers white, petals hairy inside, clustered in small groups at ends of branches



GJ [*Persoonia juniperina*](#)

prickly geebung
shrub; to 1.5 m tall; light green prickly leaves; delicate golden flowers



GJ [*Phragmites australis*](#)

southern reed
perennial grass, to 3m high, aquatic or in wet mud; flower head to 40cm long, brown, soft, dense



AS *Pittosporum bicolor*

cheesewood

tree to 8m, conical habit; leaves dark green above, lighter below; flowers bell-shaped, brown & yellow



GJ *Platylobium triangulare*

arrow flatpea

scrambling shrub; leaves triangular with sharp tips; flowers orange/yellow pea with bracts that don't conceal the stem.

Poa labillardierei

tussock grass

Large, coarse, densely tufted perennial; flower stems rounded, erect, flowers cream or brown above the leaves



GJ *Pomaderris elliptica*

var. diemenica

dogwood

Shrub/tree to 10m, ovate leaves - tops veins indented, below hairy and veins prominent, cream flowers in branching cymes, no petals



GJ *Pteridium esculentum*

subsp. esculentum

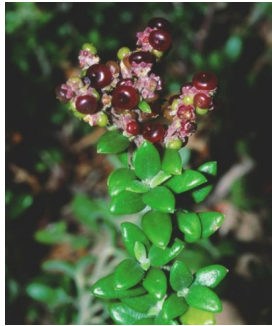
bracken

common fern to 2.5m tall; leathery much divided frond



RW [Pultenaea pedunculata](#)

matted bushpea
shrub; prostrate; golden pea flowers on stalks



GJ [Rhagodia candolleana](#)

subsp. *candolleana*
coastal saltbush
scrambling shrub to 2 m; leaves fleshy, oval to arrow shaped;
flowers terminal clusters followed by flat dark red fruits.



RW [Rhytidosporum procumbens](#)

starry appleberry
dwarf shrub to 10 cm; leaves crowded, stalkless, dark green;
flowers starry with 5 white petals



GJ [Senecio hispidulus](#)

rough fireweed
herb to 1.25m; leaf with rough upper surface; small flower
heads without "petals"



GJ [Senecio minimus](#)

shrubby fireweed
perennial herb to 1.2m high; leaves vble, toothed, lower ones
broader, lanceolate, to 15cm long; flower heads without
"petals", yellow, numerous



GJ *Solanum laciniatum*

kangaroo apple
shrub; lobed leaves; large purple flowers; yellow/orange fruit



GJ *Spinifex sericeus*

beach spinifex
perennial grass, with long, prostrate, creeping stems; male flowers in hemispherical heads; female flowers in large spherical, spiky heads



GJ *Sprengelia incarnata*

pink swampheath
erect shrub to 2m; leaves hard, pointed, sheathing stem; flowers pink/white, in terminal clusters



BC *Spyridium obovatum*

var. obovatum
smooth dustymiller
shrub/tree 1-15 m; leaves obovate to 2 cm; cream flowers small in compact heads with single floral leaf.



GJ *Spyridium obovatum*

var. velutinum
shrub/tree 1-15 m; leaves obovate to 2 cm; yellow flowers small in compact heads with single floral leaf.



GJ *Spyridium vexilliferum*
var. *vexilliferum*
helicopter bush
shrub to 1m; tiny flowers surrounded by three white bracts



RW *Styloidium armeria*

coastal triggerplant
robust herb; leaves to 25 cm in basal rosette; flowers
pink/magenta in spike to 50 cm or more.



BC *Styloidium graminifolium*

narrowleaf triggerplant
herb to 50cm; leaves narrow, strap-like; flowers pink, four-
petalled, in spikes



GJ *Styphelia ericoides*

pink beardheath
erect woody shrub to 1m; leaves to 13mm, edges turned
down; flowers numerous along branches, white, tubular, hairy
inside



GJ *Styphelia humifusa*

native cranberry
ground cover; prickly leaves; red tube flowers in winter



RS *Tasmannia lanceolata*

mountain pepper
tree to 5m; leaves lance-shaped on red stems; flowers yellow;
fruit red turning black



GJ *Tetragonia implexicoma*

bower spinach
sprawling undershrub; leaves diamond shaped, succulent to 4
cm; flowers yellow with 4 petals, on long stems.



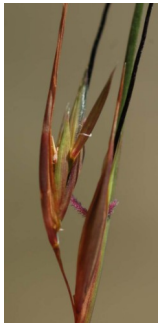
GJ *Tetratheca labillardierei*

glandular pinkbells
Glandular, hairy shrub to 50cm; leaves alternate, 6-10mm,
dark green, rough, finely toothed; flowers mauve bells with
black stamens.



GJ *Tetratheca pilosa*

subsp. latifolia
broadleaf hairy pinkbells
shrub to 60 cm tall; stems with fine white hairs; pink flowers
pendulous on stalks



GJ *Themeda triandra*

kangaroo grass
Tufted perennial grass, up to 120cm



GJ [Veronica derwentiana](#)
subsp. derwentiana

perennial herb to 1.5m high; leaves lance-shaped, 6-12cm long; flowers 4-petalled, pale blue or white, in dense spikes



GJ [Veronica gracilis](#)

slender speedwell
herb to 10cm; leaves narrow lance-shaped, to 3.5cm; flowers blue, four petalled



GJ [Viola hederacea](#)

ivyleaf violet
herb; perennial, spreading; kidney shaped leaves; violet flowers on stalks



GJ [Wahlenbergia gracilentia](#)

annual bluebell
herb; dark blue star-like flowers



GJ [Wahlenbergia multicaulis](#)

bushy bluebell
Small herb to 40cm, visible only when flowering; sparse leaves on hairy branched stem; blue, funnel flowers 5 petals, petals striped.



GJ *Xanthosia ternifolia*

shrubby crossherb
small shrub; leaves 3-lobed, hairy; flowers tiny, in groups



GJ *Xanthosia tridentata*

hill crossherb
shrub to 30cm high; leaves 6-15mm long, apex 3-notched;
flowers in groups of 1-3