

August 18, 2020.

***Caucaea colombiana* Uribe-Velez, Sauleda & Szlachetko an Addition to the Flora of Colombia.**

Carlos Uribe-Velez¹, Ruben P. Sauleda² and Dariusz L. Szlachetko³

¹Calle 115 #5-23 Bogota, Colombia.

²6442 SW 107 Ct. Miami, Fl, 33173.

³Department of Plant Taxonomy and Nature Conservation, University of Gdańsk, Wita Stwosza 59, 80-308 Gdańsk, Poland.

Abstract

A new species of *Caucaea* Schltr. from Norte de Santander, Colombia is described.

Kraenzlin (1922) originally included the species now included in the genus *Caucaea* in *Oncidium* sect. *Cucullata* Kraenzlin, typified by *Oncidium cucullatum* Lindl. This was the first comprehensive infrageneric classification of the genus *Oncidium*. Stacy (1975) suggested that the species included in this section were distinctive from *Oncidium*. Molecular studies (Williams *et al.*, 2001) of some of the species included in Kraenzlin's sect. *Cucullata* suggest a close relation with what was the monotypic genus *Caucaea* Schltr., typified by *Caucaea radiata* (Lindl.) Schltr. Williams *et al.* (2001) suggested transferring the species of the sect. *Cucullata* to *Caucaea*. This concept was rejected by Dodson and Luer (2005). However, studies of gynostemium morphology (Szlachetko & Mytnik-Ejsmont, 2009) confirm the similarity of the reproductive structures between *C. radiata* and species of the sect. *Cucullata*. In addition, subsequent genetic analysis of the *Oncidiinae* by Neubig *et al.* (2012) confirmed the molecular analysis of Williams *et al.* (2001) demonstrating a close phylogenetic relation between *C. radiata* and species of the sect. *Cucullata*. The analysis of Williams *et al.* (2001) also demonstrates a clear separation between the species of *Oncidium* but, a close relation between species of the sect *Cucullata* and taxa of the genus *Cyrtochilum* complex.

Species of the genus *Caucaea* usually grow as epiphytes in cool, wet montane forest or high montane Andean cloud forest, usually above 2500 m. At present the genus contains over 20 species distributed from Colombia and Venezuela south to Peru. The highest number of species is found in Ecuador.

Based on the studies above mentioned we here describe a new species from Colombia in the genus *Caucaea* Schltr.

***Caucaea colombiana* sp. nov., Uribe-Velez, Sauleda & Szlachetko.**

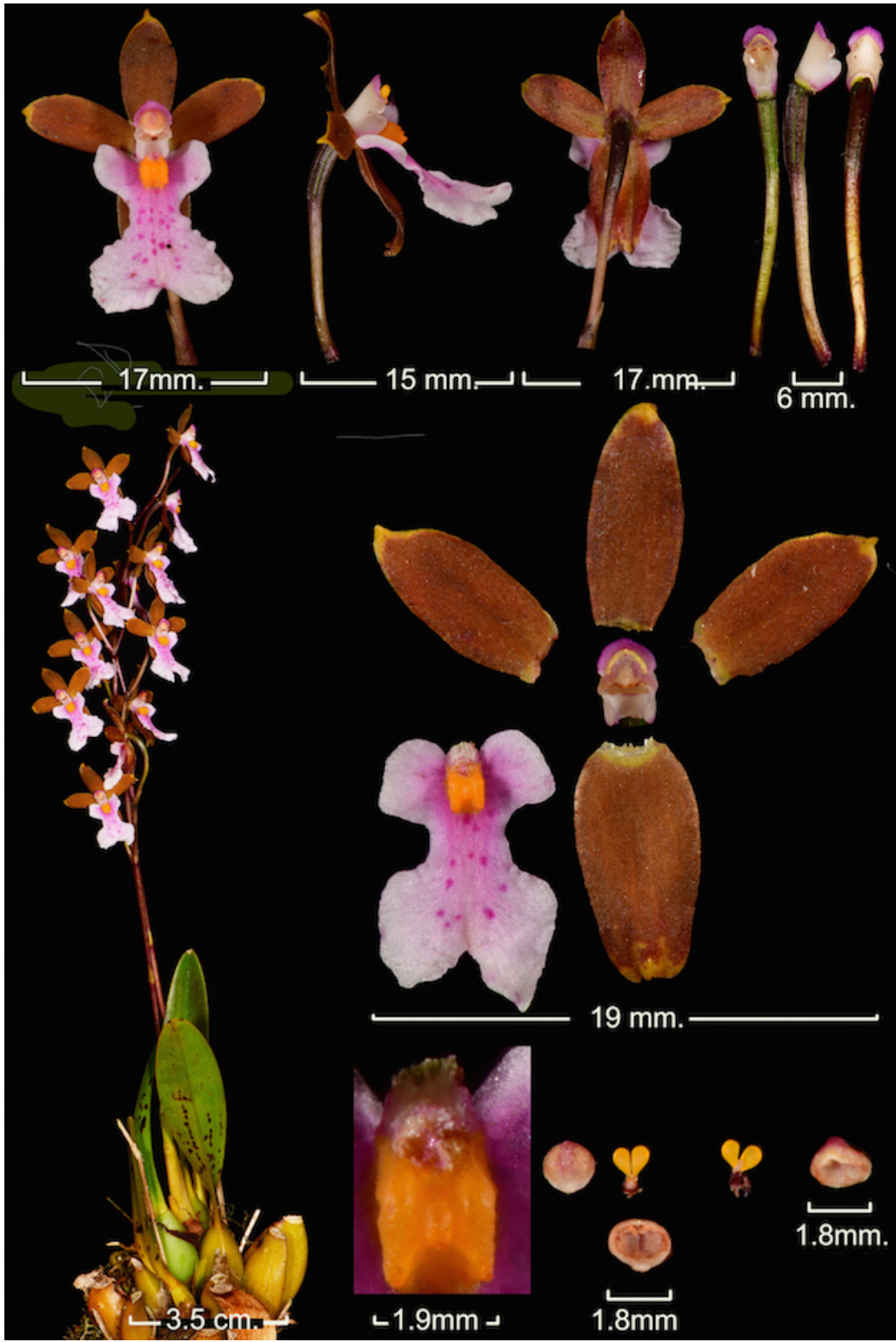
Type: Colombia, department of Norte de Santander. Cordillera Oriental near border with Venezuela. Wet montane forest at 2100 m. Collector: *Enrique Pobeva s. n.*, 2017. (Holotype: HPUJ).

Diagnosis

Caucaea colombiana is similar to *Caucaea sanguinolenta* (Lindl.) N.H. Williams & M.W. Chase by the almost complete fusion of lateral sepals. It differs in the color of the flowers and callus on the labellum. *Caucaea colombiana* has an obscurely 3-lobed callus on the labellum, which is prominently 5-lobed in *C. sanguinolenta*. The sepals and petals of *C. sanguinolenta* are almost black, in *C. colombiana* they are a reddish-brown. The labellum of *C. sanguinolenta* is broadly 3-lobed, deeply emarginate and purple with large deep purple spots. The labellum of *C. colombiana* is narrowly 3-lobed and shallowly emarginate and light purple with few purple spots randomly placed. Labella somewhat similar in form to *C. colombiana* can be observed in *Caucaea dayana* (Rchb. f.) N. H. Williams & M. W. Chase and *Caucaea phalaenopsis* (Lindl. & Rchb. f.) N. H. Williams & M. W. Chase, but both of the latter species have different color of flowers with pinkish or white sepals and petals deep purple spotted and labellum with deep purple marks and small dots.

Description

Plant epiphytic to 15 cm tall; pseudobulbs to 3 cm tall, 2.5 cm wide, ovoid, bilaterally compressed, unifoliate; leaves to 7 cm long, 2 cm wide, ovate, concave, subacute; inflorescence to 25 cm tall, racemose, to 15 flowers, floral bract to 4 mm long, 1.5 mm wide, ovate, acute; pedicel to 12 mm, ovary to 6 mm long; sepals and petals dark reddish-brown, apically with yellow margin, dorsal sepal elliptic, obtuse, to 9 mm long, 3 mm wide; lateral sepals almost entirely fused, to 9 mm long; petals elliptic, obtuse, minutely acuminate, to 8 mm long, 3 mm wide; Labellum 3-lobed, light purple with few darker purple spots, to 12 mm long, 7 mm wide across midlobe, lateral lobes truncate to 3 mm wide, 3 mm long, isthmus short, to 2 mm long, midlobe reniform, bifid, to 7 mm wide, callus yellow, obscurely 3-lobed, terminally 2-lobed; column white to light purple with two basal projections, to 6 mm long, 3 mm wide; anther light purple to 1.8 mm wide.



Caucaea colombiana Uribe-Velez, Saulea & Szlachetko.



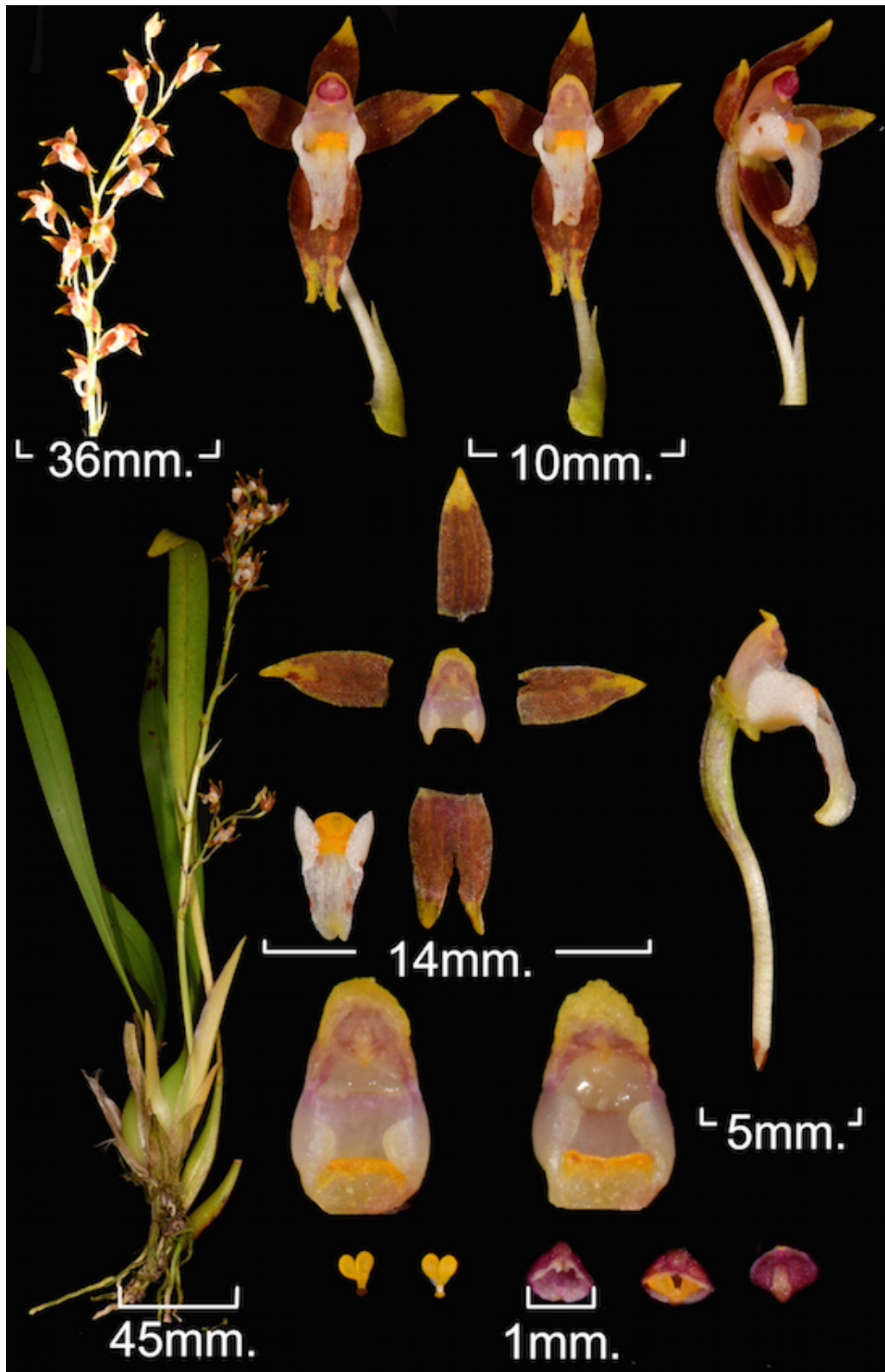
Caucaea colombiana Uribe-Velez, Saulea & Szlachetko.



Caucaea colombiana Uribe-Velez, Sauleda & Szlachetko.



Caucaea sanguinolenta (Lindl.) N.H. Williams & M.W. Chase.



Caucaea radiata (Lindl.) Schltr. type of the genus *Caucaea* Schltr.

Literature Cited

Dodson, C. H. and Luer, C. A. 2005. Orchidaceae, Genera AA–Cyrtidiorchis. In: G. Harling & L. Andersson (eds), Flora of Ecuador 76: 1–347. Botanical Institute, Göteborg University, Riksmuseum, Stockholm.

Kraenzlin F. 1922. Orchidaceae–Monandrae, Tribus Oncidiinae–Odontoglosseae Pars II. Engelmann, Leipzig.

Neubig K. M., Whitten W. M., Williams N. H., Blanco M. A., Endara L., Burleigh J. G., Silvera K., Cushman J. C. and Chase M. W. 2012. Generic recircumscriptions of Oncidiinae (Orchidaceae: Cymbidieae) based on maximum likelihood analysis of combined DNA datasets. Bot. J. Linn. Soc. 168: 117–146.

Stacy J. 1975. Studies in the genus *Oncidium* I (Section Cucullata). Bot. Mus. Leaflet. 24: 133–191.

Szlachetko D. L. and Mytnik-Ejsmont J. 2009. *Gynostemium Orchidaleum* IV. Acta Bot. Fenn. 180: 1–313.

Williams N. H., Chase M. W. and Whitten W. M. 2001. Phylogenetic position of *Miltoniopsis*, *Caucaea*, a new genus, *Cyrtochiloides*, and relationship of *Oncidium phymatochilum* based on nuclear and chloroplast DNA sequence data (Orchidaceae: Oncidiinae). Lindleyana 16: 272–285.