

# Pollinator Link

## Native Solitary Bee Home Trial

Prepared for:  
Brisbane City Council

Project Team:  
Michael Fox (Team Leader) – Director Pollinator Link®  
Jake Slinger – Environmental Management UQ (student)  
Alex Watkins – Masters of Environmental Science GU (student)

Project Consultants:  
Andy G Howe - Ecological Entomologist  
Ann Moran – Field Biologist

Pollinator Link®  
Bulimba Creek Catchment Coordinating Committee (B4C)  
PO Box 5  
Carina, QLD 4152



## Project Aim

### Aim

The aim is to provide data to inform creation an Australian bee Guardian scheme similar to those in UK: <https://www.masonbees.co.uk/bee-guardians>, US: <https://crownbees.com/native-bee-programs> and NZ

### Background

Australia has over 2,000 species of solitary native bees which don't form colonies. Female solitary bees create unique nests which they pack with a pollen / nectar food mix then lay their eggs. In spring the next generation of bees emerge.

Creating solitary bee Habitat in the form of Bee Homes has become popular in recent years with some large and impressive structures installed everywhere from Paris to Woodford and backyard versions are sold in Bunnings and Aldi. However, there are significant risks associated:

- large numbers of bees nesting in close proximity become targets for parasitic insects and mites; and
- mass produced commercial bee home are typically too shallow for a balanced production of female and male bees.

(References Appendix B - Purrinton and Nurturing Nature)

Interestingly female eggs are laid first in the nest hollow with male egg laid closer to the front. Male bees hatch first then wait around till females emerge a few days later. Male larva being close to the entry are also more vulnerable to attack by parasitic wasps, so act as extra protection for the more important females. Therefore, it is important that nest tubes are at least 150mm in length to maximise the number of female bees hatched.

### Description

Eighteen solitary native Bee Homes will be installed in three Brisbane parks. Bee Homes will have different inserts to trial and a Bunnings *Mr Fothergill's Bee & Insect House* will be co-located as a control. Regular sampling with coloured water pans will be used to identify insects present at each site. An initial flora survey will benchmark floral resources available at each site. Flowering times for different species will be recorded.

#### Eight Brigade Park - Chermside

- Area A – three bee homes aligned with Downfall Creek
- Area B – three bee homes along transit from Downfall Creek

#### Terry Hanson Reserve – Chermside

- Area A – three bee homes in Wetland area
- Area B – three bee homes aligned with Downfall Creek

#### Crosby Road Bushcare – Ascot

- Area A – two bee homes in Pollinator Link® display area
- Area B – four bee homes either side of dry gully

## Bee Home Site Details

Pollinator Link® Bee Home Project

Bee Home ID	Site	GPS		Height Above Ground Metres	Aspect Tube/Bunnings	Distance Apart Tube/Bunnings Metres	Distance from creek Metres
		Latitude	Longitude				
11	Seventh Brigade Park	-27.380751	153.036689	2.5	South/Nth-East	0.4	20
12	Seventh Brigade Park	-27.380669	153.036946	2.7	East/Nth-East	1	7
13	Seventh Brigade Park	-27.380558	153.037166	2.1	Nth/South	3	4
14	Seventh Brigade Park	-27.379715	153.034809	2.5	Sth-East/Sth-East	0.2	40
15	Seventh Brigade Park	-27.379377	153.034969	2.5	South/South	0.2	44
16	Seventh Brigade Park	-27.379054	153.035017	2.5	East/South	1	1
17	Terry Hanson Reserve	-27.380182	153.0271422	1.5	East/East	0.1	Wet land area
18	Terry Hanson Reserve	-27.380328	153.026809	1.2	East/East	0.4	Wet land area
19	Terry Hanson Reserve	-27.380412	153.026579	1	East/North	0.5	Wet land area
20	Terry Hanson Reserve	-27.379775	153.027008	1.5	East/East	0.1	10
21	Terry Hanson Reserve	-27.37988	153.027148	2	East/East	3	15
22	Terry Hanson Reserve	-27.379872	153.027289	1.5	East/East	1	23
23	Crosby Road Bushcare	-27.432827	153.05129	1.5	East/East	0.1	n/a
24	Crosby Road Bushcare	-27.432777	153.051255	1.5	Nth-East/Nth-East	0.5	n/a
25	Crosby Road Bushcare	-27.432858	153.051426	1.5	East/East	0.1	16
26	Crosby Road Bushcare	-27.432693	153.051456	2	North/East	0.2	6
27	Crosby Road Bushcare	-27.432574	153.051751	1.5	Nth-East/Nth-East	0.1	5
28	Crosby Road Bushcare	-27.432809	153.051772	2	East/East	0.1	14

# Bee Home Sites & Flora Survey Areas

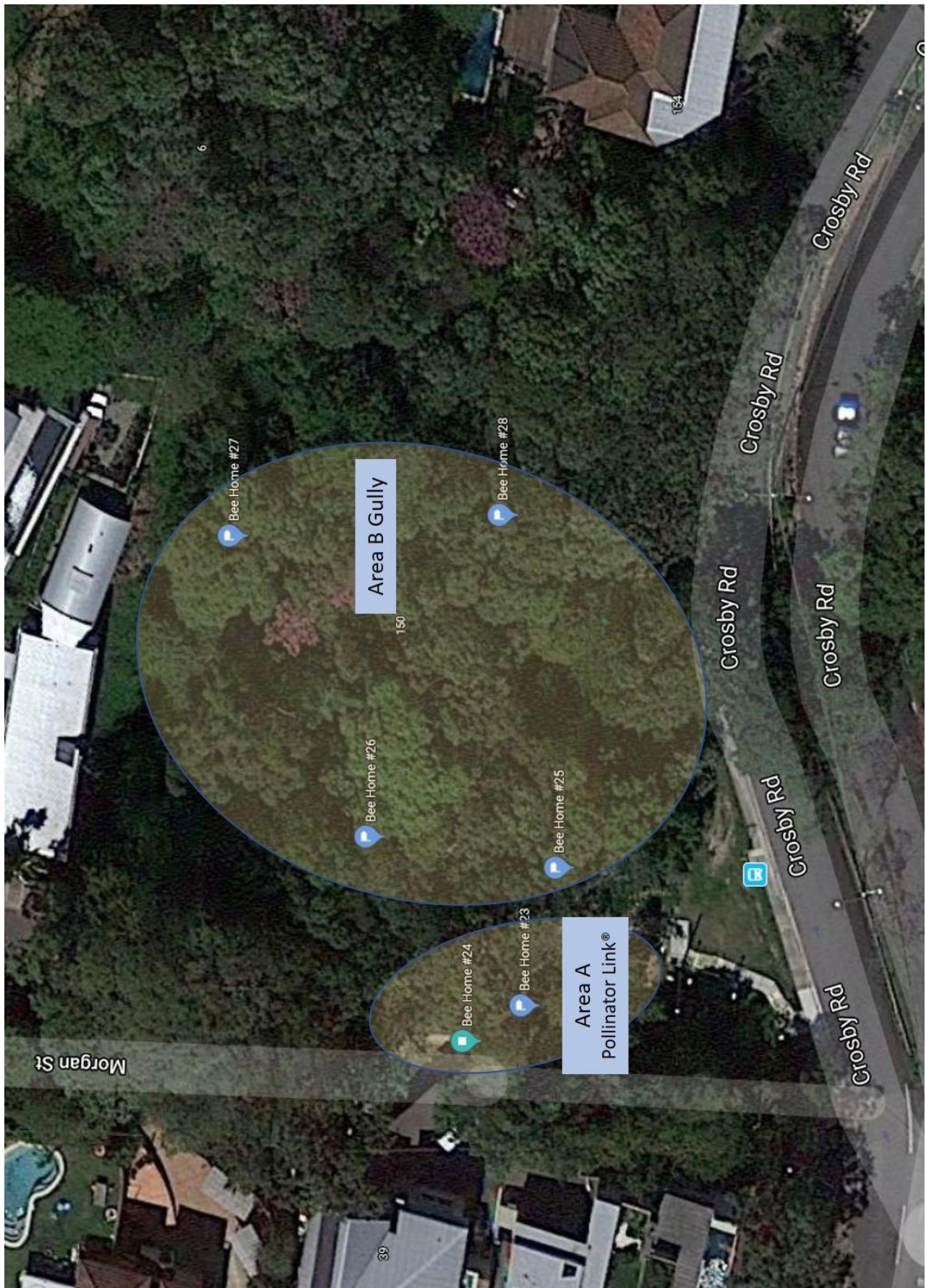
## Seventh Brigade Park



# Terry Hanson Reserve



# Crosby Road Bushcare



## Solitary Bee Homes



Bee Home 14 – Seventh Brigade Area B



Bee Home 20 – Terry Hanson Reserve Area B



Bee Home 23 – Crosby Road Bushcare  
Pollinator Link® Display Area



Bee Home 17 – Terry Hanson Reserve Wetland  
Ringtail Possum *Pseudocheirus peregrinus*

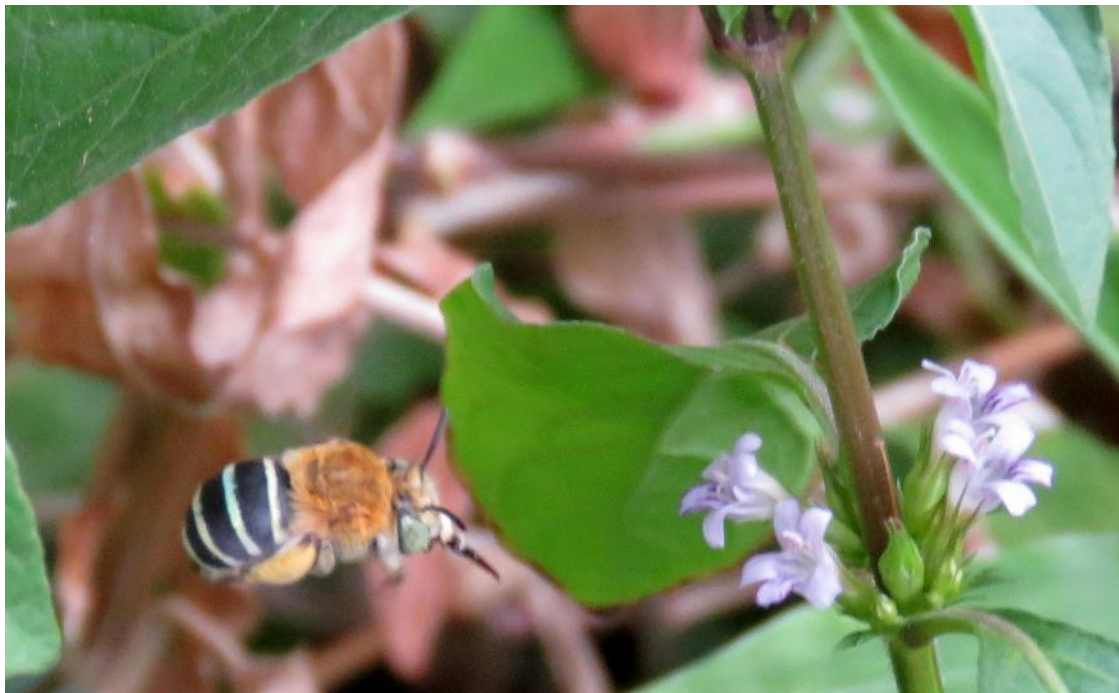
**Solitary Bee Species at Trial Sites**



Sweat Bee *Lasioglossum* sp.  
Terry Hanson Reserve



Hylaeus Bee *Hylaeus* sp. – covered in pollen  
Crosby Road Bushcare



Blue-banded Bee visiting *Dyschoriste*  
Crosby Road Bushcare



## Wildlife at Trial Sites



Stingless Native Bee *Tetragonula sp.*  
Colony Bees  
Crosby Road Bushcare



Black Flying Fox *Pteropus alecto*  
Pollinates eucalypt species  
Seventh Brigade Park



Golden Head Rutilia Fly *Rutilia argentifera*  
Potential pollinator  
Terry Hanson Reserve



Green Grass-dart *Ocybadistes walkeri*  
Potential pollinator  
Terry Hanson Reserve

## Appendix A – Flora Surveys Trial Sites

Survey: Ann Moran – Field Botanist

### Legend: Flora Species

Legend	Description	Plants per plot
D	Dominant	>100
A	Abundant	50 - 100
C	Common	20 - 50
O	Occasional	10 - 20
P	Present	5 - 10
U	Uncommon	3 - 5
R	Rare in numbers Only	1 - 3
E	Edge - not inside community	1 - 10
*	Weed or Garden escapee	
#	Planted by human/birds	

### Flora Species: Terry Hanson Reserve – Area A Wetland

	GENUS SPECIES	COMMON NAME	FORM	NUMBERS
*	<i>Ageratum houstonianum</i>	billygoat weed	Herb	Occasional
*	<i>Asclepias curassavica</i>	red head cottonbush	Shrub	Unspecified
*	<i>Bidens pilosa</i>	cobblers pegs	Herb	Occasional
*	<i>Bromus catharticus</i>	prairie grass	Grass	Occasional
#	<i>Carex appressa</i>	tall sedge	Sedge	Rare
*	<i>Conyza canadensis</i>	hairy canadian fleabane	Herb	Occasional
#	<i>Cordyline rubra</i>	common palm lily	Shrub	Uncommon
#	<i>Crinum pedunculatum</i>	swamp lily	Herb	Occasional
*	<i>Cyclospermum leptophyllum</i>	slender celery	Herb	Occasional
#*	<i>Cynodon dactylon</i>	green couch	Grass	Edge
*	<i>Cyperus brevifolius</i>	mullumbimby couch	Sedge	Uncommon
*	<i>Cyperus eragrostis</i>	tall sedge	Sedge	Occasional
	<i>Cyperus polystachyos</i>	bunchy sedge	Sedge	Occasional
	<i>Dianella caerulea v caerulea</i>	paroo lily	Herb	Occasional
*	<i>Echinochloa telmatophila</i>	swamp barnyard grass	Grass	Common
	<i>Eclipta prostrata</i>	twin heads	Herb	Occasional
#	<i>Elaeocarpus grandis</i>	blue quandong	Tree	Rare
	<i>Embelia australiana</i>	embelia vine	Vine	Rare
#	<i>Eucalyptus tereticornis ssp tereticornis</i>	Qld blue gum	Tree	Occasional
#	<i>Glochidion ferdinandi v ferdinandi</i>	cheese tree	Tree	Occasional
	<i>Leersia hexandra</i>	swamp rice grass	Grass	Common
#	<i>Lepironia articulata</i>	grey rush	Sedge	Occasional
	<i>Ludwigia sp aff octovalvis</i>	hairy primrose	Shrub	Occasional
	<i>Melaleuca quinquenervia</i>	broad-leaved paper-bark	Tree	Occasional
#	<i>Melicope elleryana</i>	pink euodia	Tree	Rare
*	<i>Paspalum urvillei</i>	vasey grass	Grass	Occasional
#	<i>Philydrum lanuginosum</i>	frogsmouth	Herb	Uncommon
	<i>Pittosporum undulatum</i>	sweet pittosporum	Tree	Occasional
	<i>Sacciolepis indica</i>	india cupscale grass	Grass	Rare

#	<i>Schoenoplectus littoralis</i>	coastal club rush	Sedge	Uncommon
#	<i>Schoenoplectus mucronatus</i>	star club rush	Sedge	Uncommon
#	<i>Syzygium floribundum</i>	weeping lilly pilly	Tree	Common
#	<i>Syzygium luehmannii</i>	small-leaf lilly pilly	Tree	Common
*	<i>Typha orientalis</i>	broad bulrush	Aquatic	Unspecified
*	<i>Urochloa mutica</i>	para grass	Grass	Uncommon
*	<i>Mimosa pudica</i>	Common Sensitive Plant	Herb	Uncommon

### Flora Species: Terry Hanson Reserve – Area B Creek

	GENUS SPECIES	COMMON NAME	FORM	NUMBERS
*	<i>Ageratum houstonianum</i>	billygoat weed	Herb	Occasional
*	<i>Asclepias curassavica</i>	red head cottonbush	Shrub	Unspecified
*	<i>Asparagus africanus</i>	broom fern	Vine	Common
*	<i>Bidens pilosa</i>	cobblers pegs	Herb	Occasional
*	<i>Bromus catharticus</i>	prairie grass	Grass	Occasional
*	<i>Celtis sinensis</i>	chinese celtis	Tree	Common
*	<i>Cinnamomum camphora</i>	camphor laurel	Tree	Occasional
*	<i>Conyza canadensis</i>	hairy canadian fleabane	Herb	Occasional
*	<i>Cyclosporum leptophyllum</i>	slender celery	Herb	Occasional
*	<i>Cynodon dactylon</i>	green couch	Grass	Edge
*	<i>Dyschoriste depressa</i>	Dyschoriste	Herb	Uncommon
#*	<i>Erythrina crista-galli</i>	cockspur coral tree	Tree	Occasional
*	<i>Ipomoea cairica</i>	mile-a-minute	Vine	Uncommon
*	<i>Lycium ferocissimum</i>	African boxthorn	Shrub	Rare
	<i>Macaranga tanarius</i>	nasturtium tree	Tree	Uncommon
*	<i>Macroptilium atropurpureum</i>	siratro	Creepers	Unspecified
*	<i>Macrotyloma axillare</i>	gylcine	Creepers	Present
*	<i>Megathyrsus maximus v pubiglumis</i>	green panic	Grass	Unspecified
*	<i>Morus alba</i>	mulberry	Tree	Occasional
*	<i>Ochna serrulata</i>	mickey mouse plant	Shrub	Uncommon
*	<i>Paspalum urvillei</i>	vasey grass	Grass	Occasional
*	<i>Pinus radiata</i>	himalayan pine	Tree	Abundant
*	<i>Richardia brasiliensis</i>	white eye	Herb	Rare
*	<i>Schinus terebinthifolius</i>	broad-leaf pepper tree	Tree	Occasional
*	<i>Senna pendula v glabrata</i>	easter cassia	Shrub	Occasional
*	<i>Sida rhombifolia</i>	paddy lucerne	Shrub	Unspecified
*	<i>Solanum americanum</i>	glossy nightshade	Shrub	Present
*	<i>Sphagneticola trilobata</i>	singapore daisy	Herb	Abundant
*	<i>Tecoma stans</i>	yellow bells	Tree	Common
*	<i>Verbena littoralis v littoralis</i>	common verbena	Herb	Rare

## Fora Species: Seventh Brigade Park Area A

	GENUS SPECIES	COMMON NAME	FORM	NUMBERS
#	<i>Acacia disparrima</i> ssp <i>disparrima</i>	ironbark wattle	Tree	Uncommon
#	<i>Acacia fimbriata</i>	brisbane wattle	Shrub	Common
#	<i>Acacia leiocalyx</i> ssp <i>leiocalyx</i>	early-flowering wattle	Tree	Present
#	<i>Acacia maidenii</i>	maiden's wattle	Shrub	Present
	<i>Acacia melanoxydon</i>	blackwood	Tree	Uncommon
*	<i>Ageratum houstonianum</i>	billygoat weed	Herb	Uncommon
	<i>Allocasuarina littoralis</i>	black she-oak	Tree	Uncommon
	<i>Alphitonia excelsa</i>	soapy ash	Tree	rare
*	<i>Anredera cordifolia</i>	madeira vine	Vine	Rare
*	<i>Asparagus aethiopicus</i>	asparagus fern	Creeper	Uncommon
*	<i>Asparagus africanus</i>	broom fern	Vine	Occasional
*	<i>Bryophyllum delagoense</i>	mother of millions	Herb	Common
*	<i>Bryophyllum pinnatum</i>	live-leaf	Herb	Occasional
#*	<i>Caesalpinia ferrea</i>	leopard tree	Tree	Rare
*	<i>Callisia repens</i>	small wandering jew	Herb	Abundant
#	<i>Callistemon</i> Hybrids	weeping bottlebrush	Shrub	Uncommon
#	<i>Casuarina glauca</i>	swamp she-oak	Tree	Common
*	<i>Celtis sinensis</i>	chinese celtis	Tree	Abundant
*	<i>Cestrum parqui</i>	green cestrum	Shrub	Rare
*	<i>Cinnamomum camphora</i>	camphor laurel	Tree	Occasional
#	<i>Corymbia citriodora</i> ssp <i>variegata</i>	spotted gum	Tree	Uncommon
#	<i>Cupaniopsis anacardioides</i>	tuckeroo	Tree	Uncommon
	<i>Cyathea cooperi</i>	scaly tree fern	Tree	Rare
*	<i>Cynodon dactylon</i>	green couch	Grass	Edge
*	<i>Duranta erecta</i>	Duranta	Shrub	Uncommon
*	<i>Dyschoriste depressa</i>	Dyschoriste	Herb	Dominant
#	<i>Eucalyptus major</i>	Qld grey gum	Tree	Uncommon
#	<i>Eucalyptus microcorys</i>	tallowwood	Tree	Unspecified
	<i>Eucalyptus siderophloia</i>	grey ironbark	Tree	Occasional
	<i>Eucalyptus tereticornis</i> ssp <i>tereticornis</i>	Qld blue gum	Tree	Occasional
#	<i>Gazania species</i>	treasure flowers	Herb	Rare
*	<i>Gomphrena celosioides</i>	soft khaki weed	Herb	Uncommon
*	<i>Ipomoea cairica</i>	mile-a-minute	Vine	Common
*	<i>Ipomoea indica</i>	blue morning glory	Vine	Uncommon
	<i>Juncus continuus</i>	common rush	Sedge	Rare
*	<i>Lantana camara</i>	lantana	Shrub	Uncommon
*	<i>Leucaena leucocephala</i>	coffee bush	Shrub	Occasional
#	<i>Lomandra longifolia</i> X <i>Lomandra hytrix</i>	planted species	Herb	Common
#	<i>Lophostemon confertus</i>	brush box	Tree	Occasional
#	<i>Lophostemon suaveolens</i>	coastal swamp box	Tree	Occasional
*	<i>Macroptilium atropurpureum</i>	siratro	Creeper	Occasional
*	<i>Megathyrsus maximus</i> v <i>pubiglumis</i>	green panic	Grass	Abundant
#	<i>Melaleuca linariifolia</i>	narrow-leaved paperbark	Tree	Uncommon
#	<i>Melaleuca pachyphylla</i>	wallum bottlebrush	Shrub	Rare
#	<i>Melaleuca salicina</i>	pink tips	Tree	Occasional
#	<i>Melaleuca sieberi</i>	white paper-bark	Tree	Rare
#	<i>Melia azedarach</i>	white cedar	Tree	Edge
*	<i>Morus alba</i>	mulberry	Tree	Rare
*	<i>Neonotonia wightii</i> ssp <i>wightii</i>	perennial soybean	Vine	Occasional
	<i>Neptunia gracilis</i> forma <i>gracilis</i>	low sensitive plant	Creeper	Rare
*	<i>Ochna serrulata</i>	mickey mouse plant	Shrub	Occasional

	<i>Parsonsia straminea</i>	monkey rope	Vine	Occasional
	<i>Paspalidium gausum</i>	shot or sago grass	Grass	Uncommon
*	<i>Passiflora suberosa</i>	corky passionflower	Vine	Rare
*	<i>Persicaria orientalis</i>	prince's feather	Herb	Occasional
#	<i>Petalostigma pubescens</i>	hairy quinine tree	Tree	Rare
*	<i>Ricinus communis</i>	castor oil plant	Shrub	Uncommon
*	<i>Ruellia simplex</i>	mexican petunia	Herb	Occasional
*	<i>Schinus terebinthifolius</i>	broad-leaf pepper tree	Tree	Uncommon
#*	<i>Schotia brachypetala</i>	parrot tree	Tree	Rare
*	<i>Senna pendula v glabrata</i>	easter cassia	Shrub	Occasional
*	<i>Sida rhombifolia</i>	paddy lucerne	Shrub	Edge
*	<i>Solanum mauritianum</i>	wild tobacco bush	Tree	Rare
*	<i>Sphagneticola trilobata</i>	singapore daisy	Herb	Abundant
*	<i>Syagrus romanzoffiana</i>	queen palm, cocoas	Tree	Uncommon
#	<i>Syzygium floribundum</i>	weeping lilly pilly	Tree	Common
#	<i>Themeda arguens</i>	hairy spear grass	Grass	Unspecified
#	<i>Trema tomentosa v aspera</i>	poison peach	Shrub	Rare
*	<i>Typha orientalis</i>	broad bulrush	Aquatic	Unspecified
*	<i>Urochloa decumbens</i>	signal grass	Grass	Occasional
*	<i>Urochloa mutica</i>	para grass	Grass	Occasional
*	<i>Verbena litoralis v litoralis</i>	common verbena	Herb	Uncommon
*	<i>Xanthosoma violaceum</i>	purple taro	Herb	Common

## Flora Species: Seventh Brigade Park Area B

	GENUS SPECIES	COMMON NAME	FORM	NUMBERS
#	<i>Acacia disparrima ssp disparrima</i>	ironbark wattle	Tree	Uncommon
#	<i>Acacia fimbriata</i>	brisbane wattle	Shrub	Common
	<i>Acacia melanoxyton</i>	blackwood	Tree	Uncommon
*	<i>Ageratum houstonianum</i>	billygoat weed	Herb	Uncommon
#	<i>Allocasuarina littoralis</i>	black she-oak	Tree	Uncommon
	<i>Alphitonia excelsa</i>	soapy ash	Tree	rare
	<i>Asplenium australasicum</i>	crow's nest	Fern	Rare
#	<i>Callistemon</i> Hybrids Dawson River	weeping bottlebrush	Shrub	common
*	<i>Celtis occidentalis</i>	hackberry	Tree	Rare
*	<i>Cinnamomum camphora</i>	camphor laurel	Tree	Occasional
#	<i>Corymbia citriodora ssp variegata</i>	spotted gum	Tree	Uncommon
#	<i>Cupaniopsis anacardioides</i>	tuckeroo	Tree	Uncommon
#	<i>Dysoxylum rufum</i>	hairy rosewood	Tree	Rare
#	<i>Eucalyptus microcorys</i>	tallowwood	Tree	Unspecified
	<i>Eucalyptus siderophloia</i>	grey ironbark	Tree	Occasional
	<i>Eucalyptus tereticornis ssp tereticornis</i>	Qld blue gum	Tree	Occasional
#	<i>Jagera pseudorhus v pseudorhus</i>	foambark tree	Tree	Unspecified
*	<i>Lantana camara</i>	lantana	Shrub	Uncommon
#	<i>Lophostemon confertus</i>	brush box	Tree	Occasional
#	<i>Lophostemon suaveolens</i>	coastal swamp box	Tree	Occasional
*	<i>Macroptilium atropurpureum</i>	siratro	Creeper	Occasional
*	<i>Megathyrsus maximus v pubiglumis</i>	green panic	Grass	Abundant
#	<i>Melaleuca linariifolia</i>	narrow-leaved paperbark	Tree	Uncommon
#	<i>Melaleuca salicina</i>	pink tips	Tree	Occasional
#	<i>Melaleuca sieberi</i>	white paper-bark	Tree	Rare
#	<i>Melia azedarach</i>	white cedar	Tree	Edge
*	<i>Morus alba</i>	mulberry	Tree	Rare
	<i>Neptunia gracilis forma gracilis</i>	low sensitive plant	Creeper	Rare
	<i>Parsonsia straminea</i>	monkey rope	Vine	Occasional
*	<i>Passiflora suberosa</i>	corky passionflower	Vine	Rare
*	<i>Senna pendula v glabrata</i>	easter cassia	Shrub	Occasional
*	<i>Sida rhombifolia</i>	paddy lucerne	Shrub	Edge
	<i>Syzygium floribundum</i>	weeping lilly pilly	Tree	Common
	<i>Themeda triandra</i>	kangaroo grass	Grass	Present
*	<i>Urochloa decumbens</i>	signal grass	Grass	Occasional
*	<i>Ruellia simplex</i>	mexican petunia	Herb	Occasional

## Flora Species: Seventh Brigade Park Area C

GENUS SPECIES	COMMON NAME	FORM	Numbers
<i>Acacia disparrima ssp disparrima</i>	ironbark wattle	Tree	Uncommon
<i>Aristida queenslandica v queenslandica</i>	wire-grass	Grass	Common
<i>Aristida vagans</i>	threeawn spear-grass	Grass	Uncommon
<i>Corymbia citriodora ssp variegata</i>	spotted gum	Tree	Uncommon
<i>Corymbia intermedia</i>	pink bloodwood	Tree	Uncommon
<i>Cupaniopsis anacardioides</i>	tuckeroo	Tree	Uncommon
<i>Dianella brevipedunculata</i>	clumping flax lily	Herb	Uncommon
<i>Dianella caerulea v caerulea</i>	paroo lily	Herb	Present
<i>Dianella revoluta v revoluta</i>	spreading flax lily	Herb	Rare
<i>Eucalyptus siderophloia</i>	grey ironbark	Tree	Occasional
<i>Eucalyptus tereticornis ssp tereticornis</i>	Qld blue gum	Tree	Occasional
<i>Lomandra filiformis</i>	fine mat-rush	Herb	Uncommon
* <i>Lomandra multiflora ssp multiflora</i>	many flowered mat-rush	Herb	Occasional
<i>Megathyrsus maximus v pubiglumis</i>	green panic	Grass	Common
<i>Parsonsia straminea</i>	monkey rope	Vine	Occasional
<i>Themeda triandra</i>	kangaroo grass	Grass	Present
* <i>Senna pendula v glabrata</i>	easter cassia	Shrub	Occasional
* <i>Sida rhombifolia</i>	paddy lucerne	Shrub	Edge
<i>Melia azedarach</i>	white cedar	Tree	Edge

## Flora Species: Crosby Road Bushcare

	<b>GENUS SPECIES</b>	<b>COMMON NAME</b>	<b>FORM</b>	<b>NUMBERS</b>
	<i>Acacia disparrima</i>	ironbark wattle	Tree	Uncommon
	<i>Adiantum hispidulum v hispidulum</i>	rough maidenhair	Fern	Uncommon
	<i>Alphitonia excelsa</i>	soapy ash	Tree	Uncommon
	<i>Angophora leiocarpa</i>	smooth-barked apple	Tree	Edge
*	<i>Anredera cordifolia</i>	madeira vine	Vine	Common
	<i>Antigonon leptopus</i>	coral vine	Vine	Occasional
	<i>Aristida vagans</i>	threeawn spear-grass	Grass	Occasional
*	<i>Asparagus aethiopicus</i>	asparagus fern	Creeper	Rare
*	<i>Asparagus africanus</i>	broom fern	Vine	Occasional
*	<i>Asparagus plumosus</i>	climbing asparagus	Vine	Occasional
*	<i>Asparagus virgata</i>	asparagus fern	Vine	Occasional
*	<i>Baccharis halimifolia</i>	groundsel bush	Shrub	Uncommon
*	<i>Bougainvillea glabra</i>	bougainvillea	Vine	Edge
#	<i>Breynia oblongifolia</i>	coffee bush	Shrub	Present
*	<i>Bryophyllum delagoense</i>	mother of millions	Herb	Edge
*	<i>Callisia fragrans</i>	fragrant inch plant	Herb	Common
*	<i>Celtis sinensis</i>	chinese celtis	Tree	Common
*	<i>Cestrum parqui</i>	green cestrum	Shrub	Edge
*	<i>Cinnamomum camphora</i>	camphor laurel	Tree	Occasional
	<i>Commelina diffusa</i>	wandering Jew	Creeper	Occasional
*	<i>Conyza sumatrensis</i>	tall fleabane	Herb	Occasional
	<i>Corymbia intermedia</i>	pink bloodwood	Tree	Occasional
*	<i>Cyclosporum leptophyllum</i>	slender celery	Herb	Edge
#	<i>Cymbopogon refractus</i>	barbwire grass	Grass	Uncommon
*	<i>Cynodon dactylon</i>	green couch	Grass	Occasional
*	<i>Cyperus brevifolius</i>	mullumbimby couch	Sedge	Present
	<i>Cyperus laevis</i>	slender sedge	Sedge	Unspecified
#	<i>Dianella longifolia v longifolia</i>	pale flax lily	Herb	Uncommon
*	<i>Dolichandra unguis-cati</i>	cats claw creeper	Vine	Occasional
*	<i>Duranta erecta</i>	duranta	Shrub	Occasional
*	<i>Dyschoriste depressa</i>	Dyschoriste	Herb	Common
	<i>Einadia hastata</i>	berry saltbush	Herb	Present
*	<i>Emilia sonchifolia v javanica</i>	asian emilia	Herb	Occasional
*	<i>Eragrostis tenuifolia</i>	elastic grass	Grass	Edge
*	<i>Eriobotrya japonica</i>	loquat japanese medlar	Tree	Occasional
*	<i>Erythrina crista-galli</i>	cockspur coral tree	Tree	Rare
	<i>Eucalyptus microcorys</i>	tallowwood	Tree	Rare
	<i>Eucalyptus tereticornis</i>	Qld blue gum	Tree	Rare
#	<i>Eustrephus latifolius</i>	wombat berry	Vine	Uncommon
	<i>Ficus microcarpa v microcarpa</i>	desert fig	Tree	Rare
#*	<i>Fraxinus griffithii</i>	ash	Tree	Edge
	<i>Glochidion ferdinandi v ferdinandi</i>	cheese tree	Tree	Rare
#	<i>Hardenbergia violacea</i>	false sarsparilla	Creeper	Uncommon
#	<i>Harpullia pendula</i>	tulipwood	Tree	Occasional
#	<i>Hibbertia scandens v scandens</i>	twining guinea flower	Creeper	Uncommon
#	<i>Hymenosporum flavum</i>	native frangipani	Tree	Rare
#	<i>Indigofera australis</i>	austral indigo	Shrub	Occasional
	<i>Indigofera triflora</i>	indigo	Shrub	Uncommon
	<i>Jagera pseudorhus v pseudorhus</i>	foambark tree	Tree	Uncommon
*	<i>Koelreuteria elegans ssp formosana</i>	golden raintree	Tree	Present
*	<i>Lantana camara</i>	lantana	Shrub	Uncommon



	<i>Lobelia membranacea</i>	blue white root	Creeper	Present
	<i>Lobelia purpurascens</i>	white root	Creeper	Occasional
#	<i>Lomandra hystrix</i>	stream mat-rush	Herb	Present
#	<i>Lomandra longifolia</i>	spiny headed mat-rush	Herb	Present
	<i>Lophostemon confertus</i>	brush box	Tree	Occasional
*	<i>Malvastrum americanum v americanum</i>	spiked malvastrum	Herb	Uncommon
*	<i>Megathyrsus maximus v pubiglumis</i>	green panic	Grass	Uncommon
#	<i>Melaleuca salicina</i>	pink tips	Tree	Present
*	<i>Monstera deliciosa</i>	swiss cheese plant	Herb	Present
*	<i>Murraya paniculata cv Exotica</i>	mock orange	Shrub	Uncommon
	<i>Myoporum boninense ssp australe</i>	mangrove boobialla	Creeper	Uncommon
*	<i>Nephrolepis cordifolia</i>	fishbone fern	Fern	Present
*	<i>Ochna serrulata</i>	mickey mouse plant	Shrub	Edge
	<i>Oplismenus aemulus</i>	rainforest grass	Grass	Common
*	<i>Oxalis corniculata</i>	creeping oxalis	Creeper	Occasional
#	<i>Ozothamnus diosmifolius</i>	sago flower	Shrub	Present
	<i>Parsonsia straminea</i>	monkey rope	Vine	Occasional
*	<i>Paspalum notatum</i>	bahia grass	Grass	Occasional
*	<i>Phytolacca octandra</i>	ink weed	Shrub	Present
#	<i>Pipturus argenteus</i>	native mulberry	Shrub	Rare
	<i>Platyserium bifurcatum</i>	elkhorn	Fern	Rare
*	<i>Rivina humilis</i>	coral berry	Shrub	Occasional
*	<i>Sansevieria trifasciata</i>	mother-in-law's-tongue	Herb	Common
#	<i>Senna acclinis</i>	brush senna	Shrub	Present
*	<i>Senna pendula v glabrata</i>	easter cassia	Shrub	Edge
*	<i>Setaria palmifolia</i>	palm grass	Grass	Occasional
	<i>Smilax australis</i>	barbwire vine	Vine	Uncommon
*	<i>Solanum americanum</i>	glossy nightshade	Shrub	Present
*	<i>Solanum mauritianum</i>	wild tobacco bush	Tree	Rare
*	<i>Sphagneticola trilobata</i>	singapore daisy	Herb	Occasional
*	<i>Syagrus romanzoffiana</i>	queen palm, cocoas	Tree	Occasional
*	<i>Syngonium podophyllum</i>	arrow head	Vine	Common
#	<i>Syzygium "Aussie Southern"</i>	nursery hybrid	Tree	Present
#	<i>Themeda avenacea</i>	tall kangaroo grass	Grass	Occasional
*	<i>Tradescantia zebrina</i>	varigated wandering jew	Herb	Edge
*	<i>Tridax procumbens</i>	tridax daisy	Herb	Uncommon
*	<i>Trifolium repens</i>	white clover	Herb	Edge
#	<i>Wikstroemia indica</i>	tie bush	Shrub	Rare
	<i>Youngia japonica</i>	native hawksbeard	Herb	Present

## Appendix B – References



Horrors of  
mass-produced bee

***The horrors of mass-produced bee houses*** Colin Purrinton

<https://colinpurrington.com/2019/05/horrors-of-mass-produced-bee-houses/>



Beware! Is your bee  
hotel a nursery for c

***Beware! Is your bee hotel a nursery for disease and pests*** Nurturing Nature

<https://nurturing-nature.co.uk/wildlife-garden-videos/beware-is-your-bee-hotel-a-nursery-for-disease-and-pests/>