

# Cytogenetic insights into plant diversification: *Asteraceae* as a case study

J. Pellicer, O. Hidalgo, D. Vitales, J. Vallès, A. Santos-Guerra, A. García, S. Siljak-Yakovlev

Royal Botanic Gardens  
**Kew**

**CSIC**  
CONSEJO SUPERIOR DE INVESTIGACIONES CIENTÍFICAS



**institut  
botànic**  
de Barcelona

UNIVERSITAT DE BARCELONA



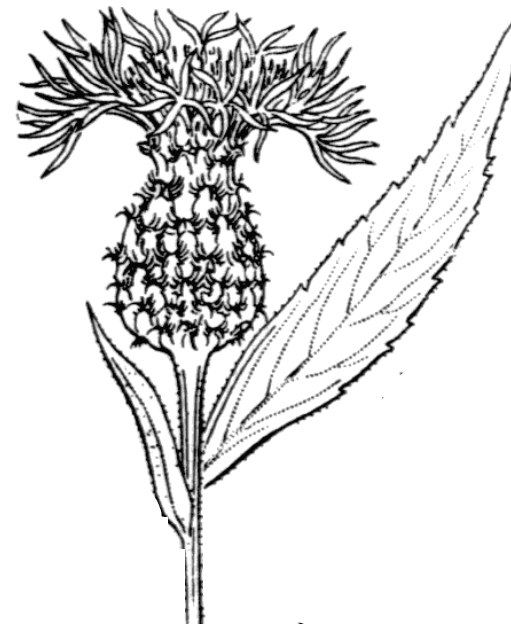
Gobierno de Canarias  
Instituto Canario  
de Investigaciones Agrarias

**U** Universidad  
Rey Juan Carlos

UNIVERSITÉ  
PARIS  
SUD  
université  
PARIS-SACLAY

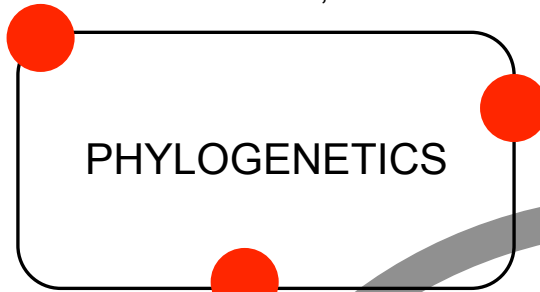
# Talk outline:

- The genus *Cheirolophus* Cass.
- Phylogenetics and diversification patterns across the Mediterranean basin and Macaronesia
- Evolution of cytogenetic traits in *Cheirolophus*:
  - Chromosome data
  - Genome size
  - Ribosomal DNA loci



***Why Cheirolophus?***

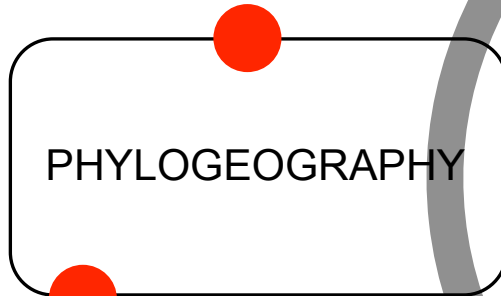
Vitales *et al.* 2014, 14: 118



Vitales *et al.* 2015, 85-100

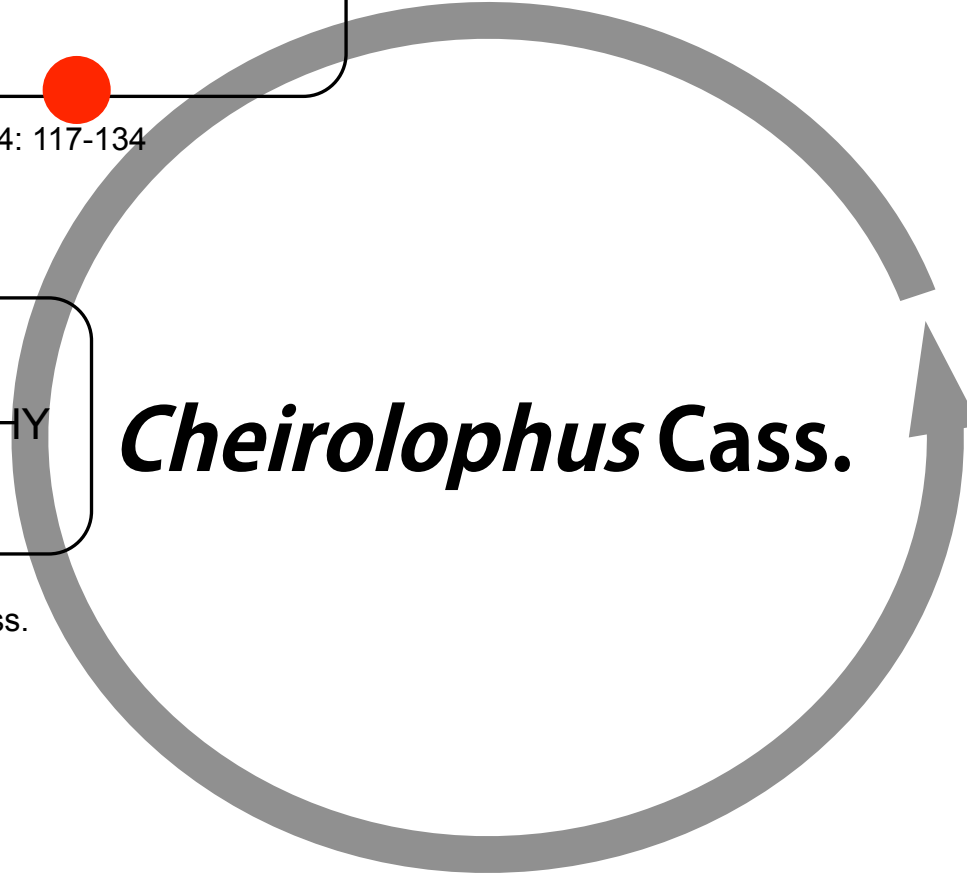
Garnatje *et al.* 2007, 264: 117-134

Vitales *et al.* 2014, 9: e113207



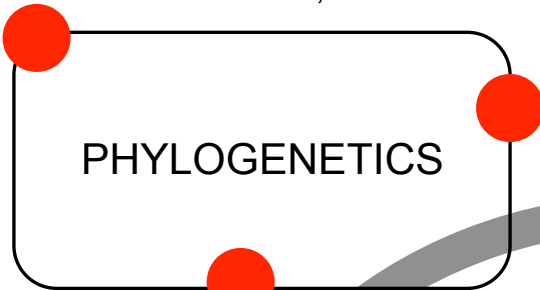
Vitales *et al.* 2015, in press.

***Cheirolophus Cass.***



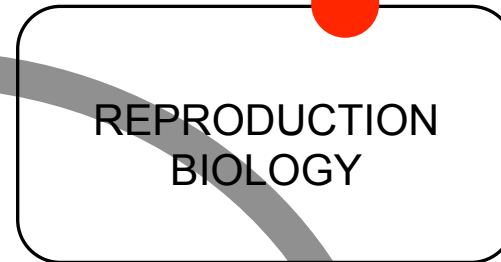


Vitales *et al.* 2014, 14: 118



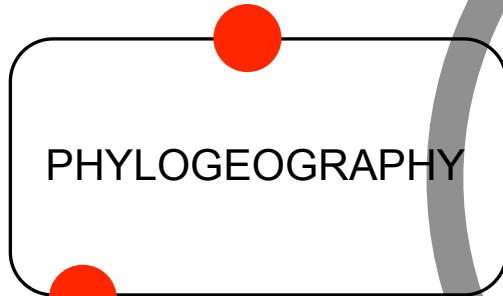
Vitales *et al.* 2015, 85-100

Vitales *et al.* 2013, 32: 21-31



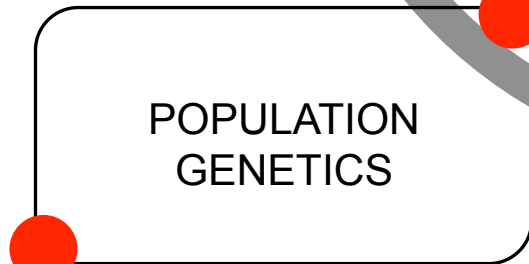
Garnatje *et al.* 2007, 264: 117-134

Vitales *et al.* 2014, 9: e113207



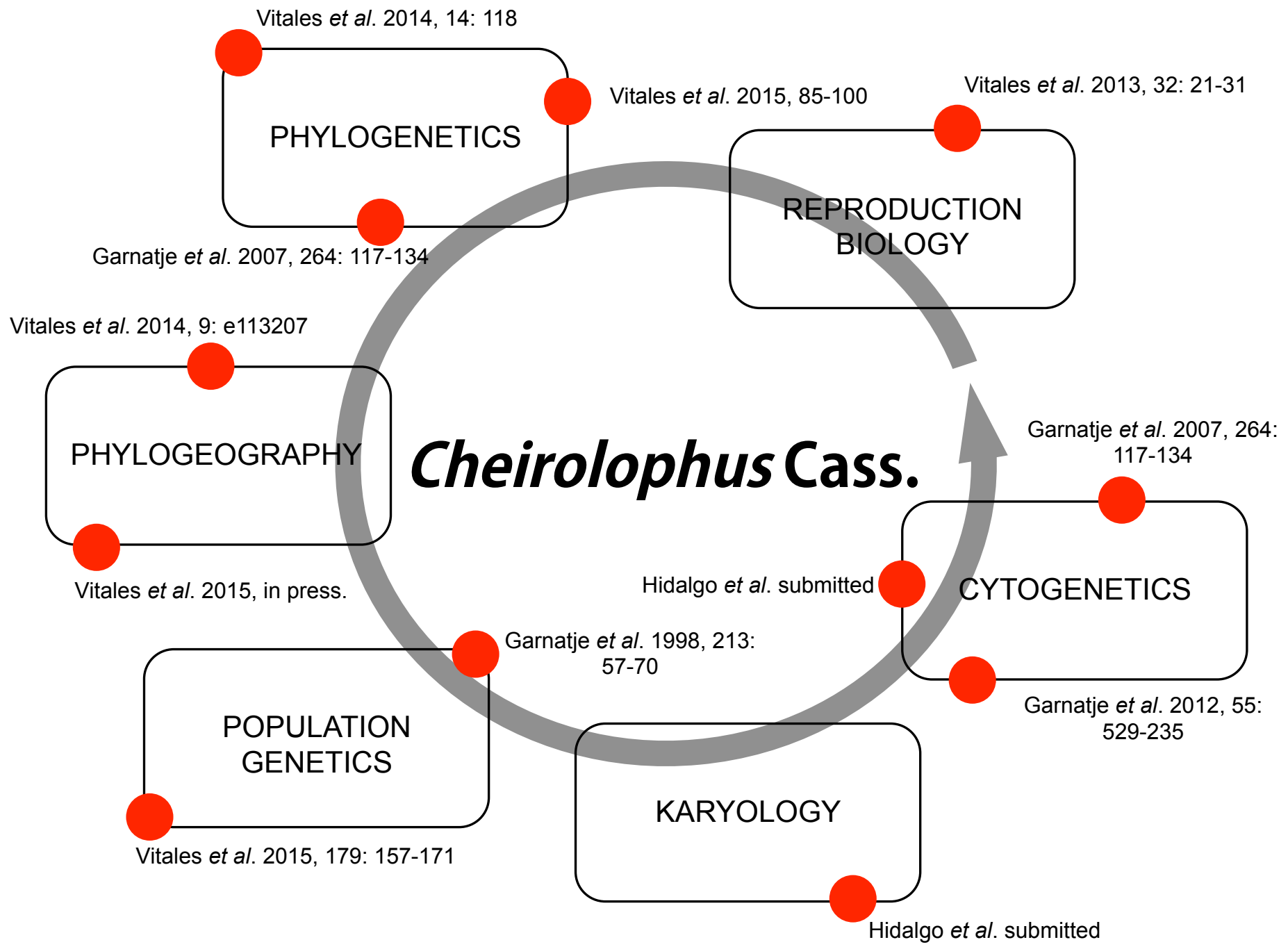
# ***Cheirolophus Cass.***

Vitales *et al.* 2015, in press.

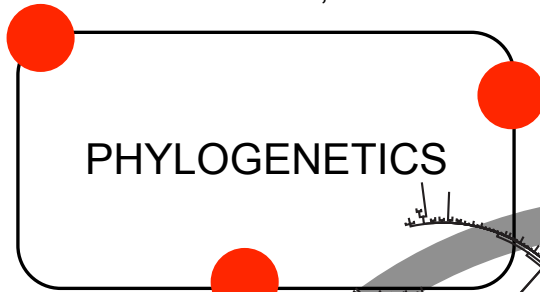


Garnatje *et al.* 1998, 213:  
57-70

Vitales *et al.* 2015, 179: 157-171



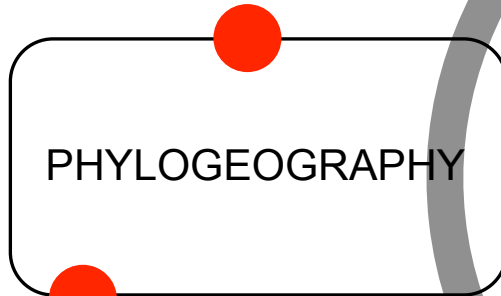
Vitales *et al.* 2014, 14: 118



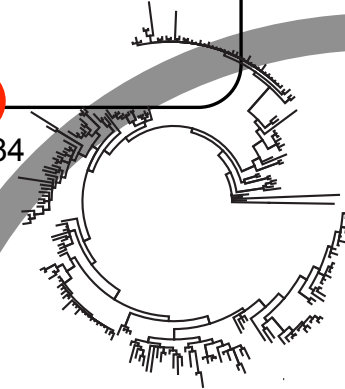
Vitales *et al.* 2015, 85-100

Garnatje *et al.* 2007, 264: 117-134

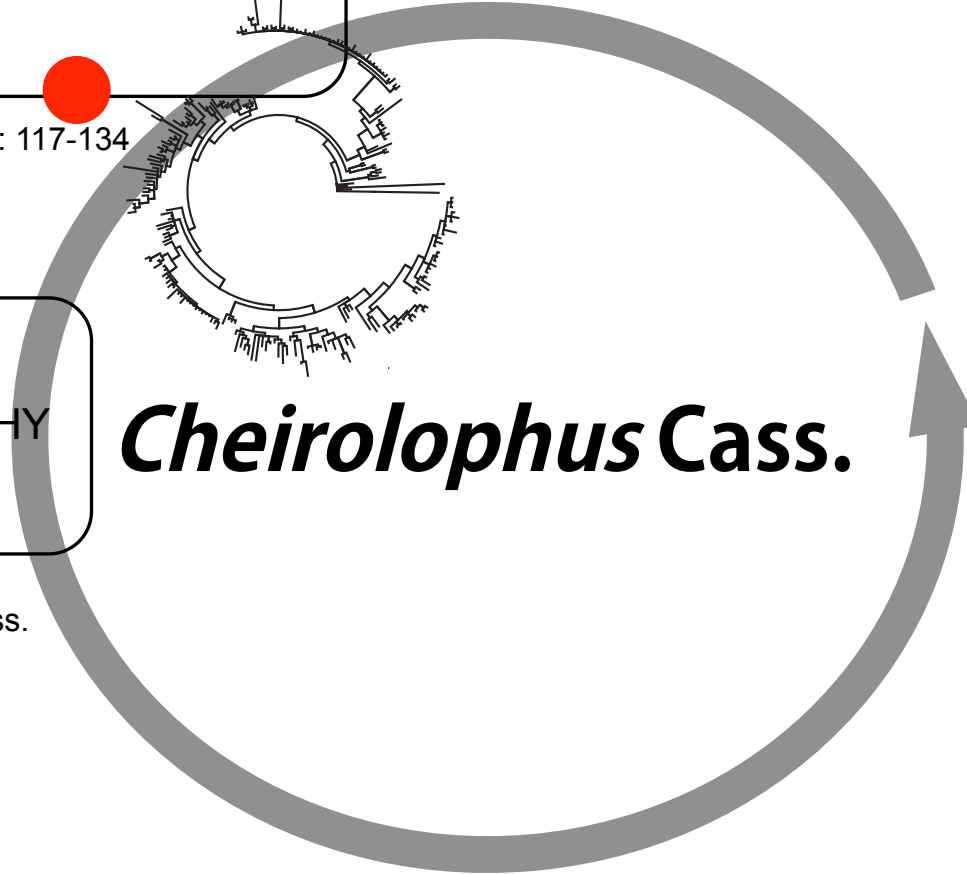
Vitales *et al.* 2014, 9: e113207



Vitales *et al.* 2015, in press.



# ***Cheirolophus Cass.***



Vitales *et al.* 2014, 14: 118

PHYLOGENETICS

Vitales *et al.* 2015, 85-100

Garnatje *et al.* 2007, 264: 117-134

Vitales *et al.* 2014, 9: e113207

PHYLOGEOGRAPHY

***Cheirolophus* Cass.**

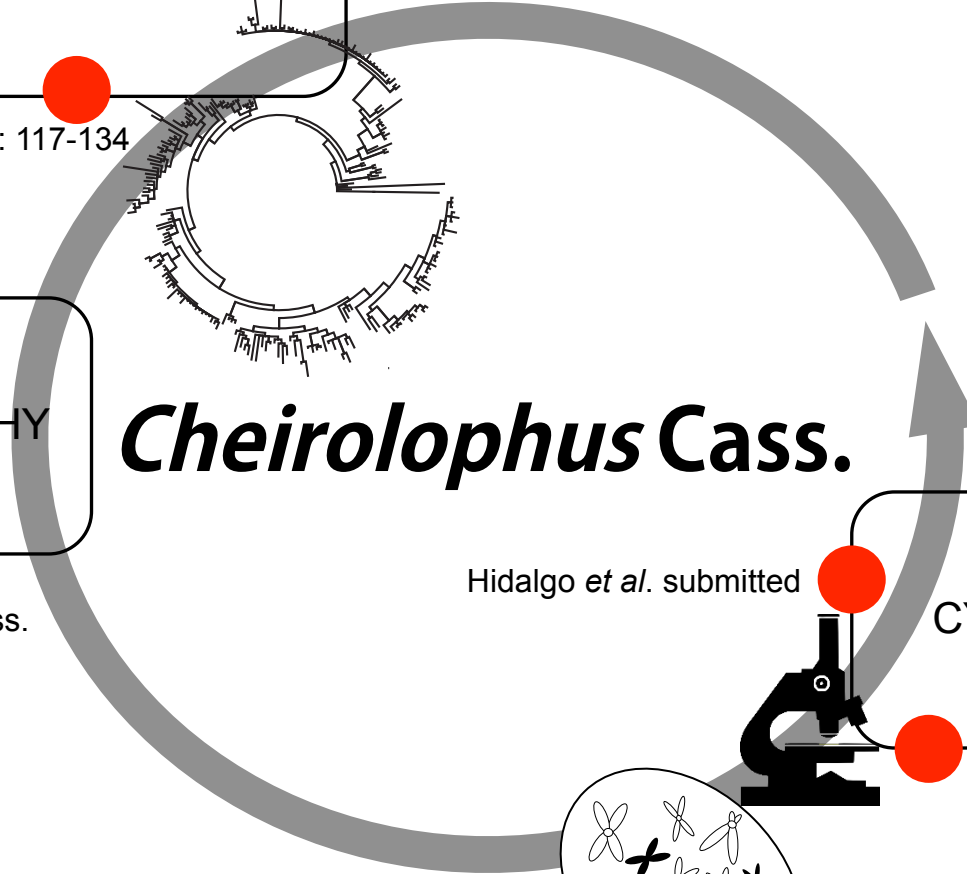
Garnatje *et al.* 2007, 264:  
117-134

Hidalgo *et al.* submitted

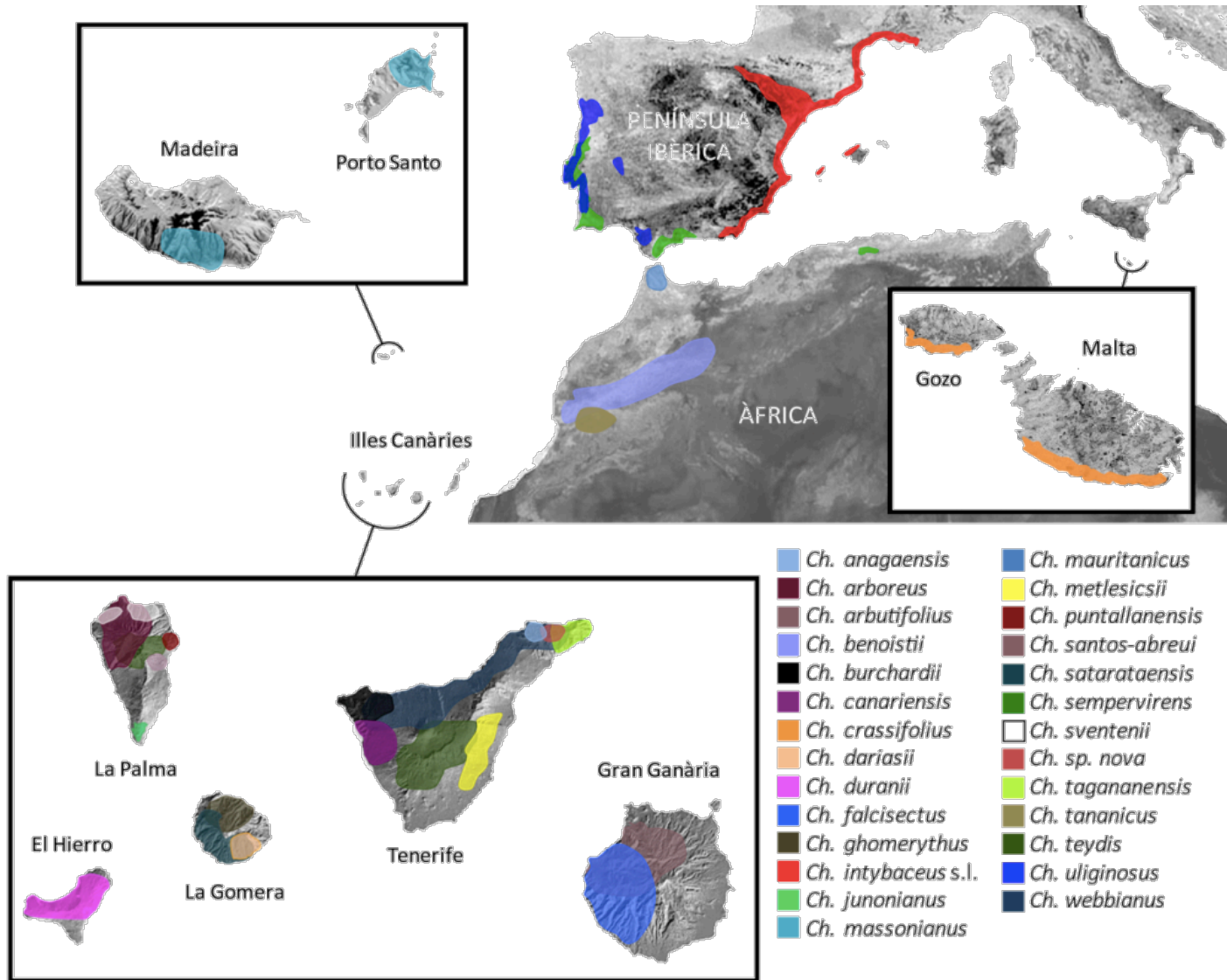
CYTOGENETICS

Vitales *et al.* 2015, in press.

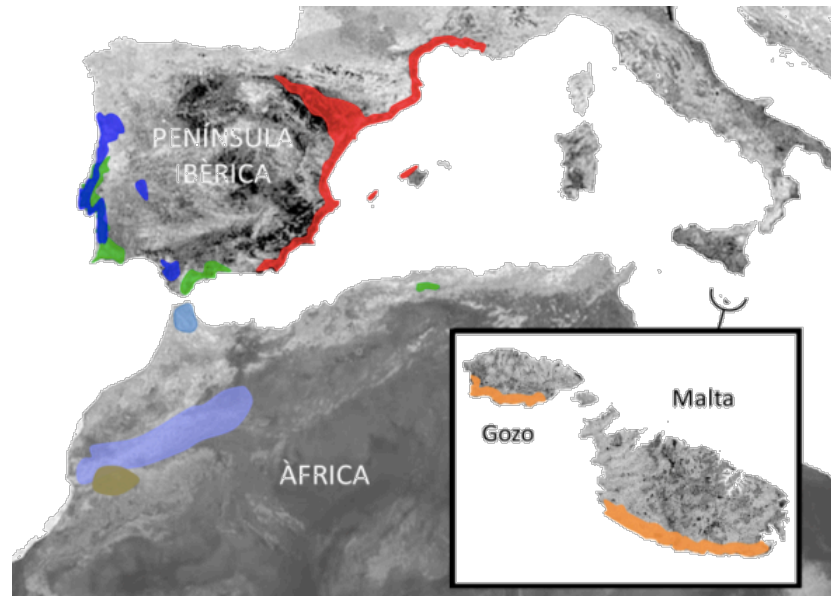
Garnatje *et al.* 2012, 55:  
529-235



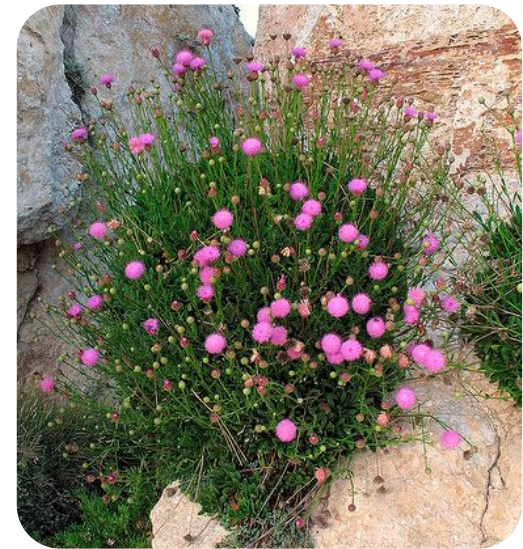
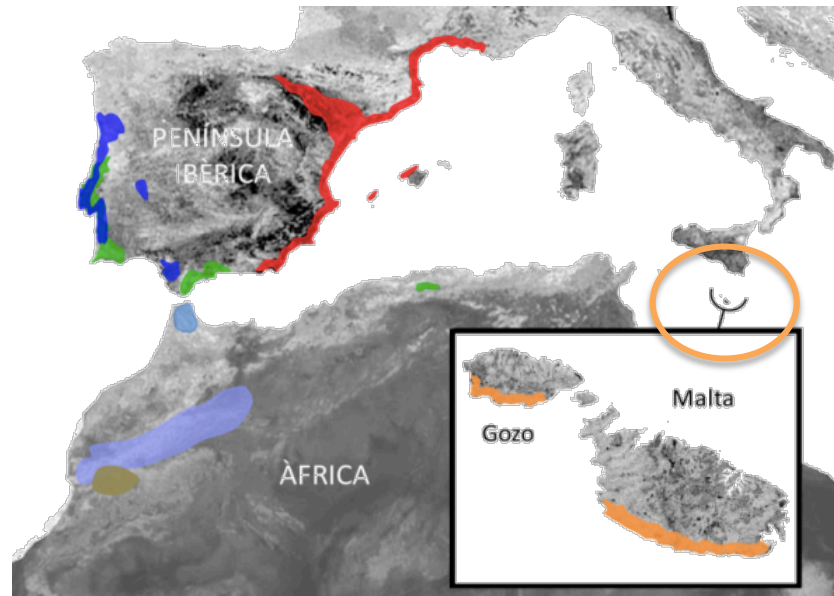
# *Cheirolophus* Cass.: c. 28 spp



***Cheirolophus* Cass.: c. 28 spp**



# *Cheirolophus* Cass.: c. 28 spp



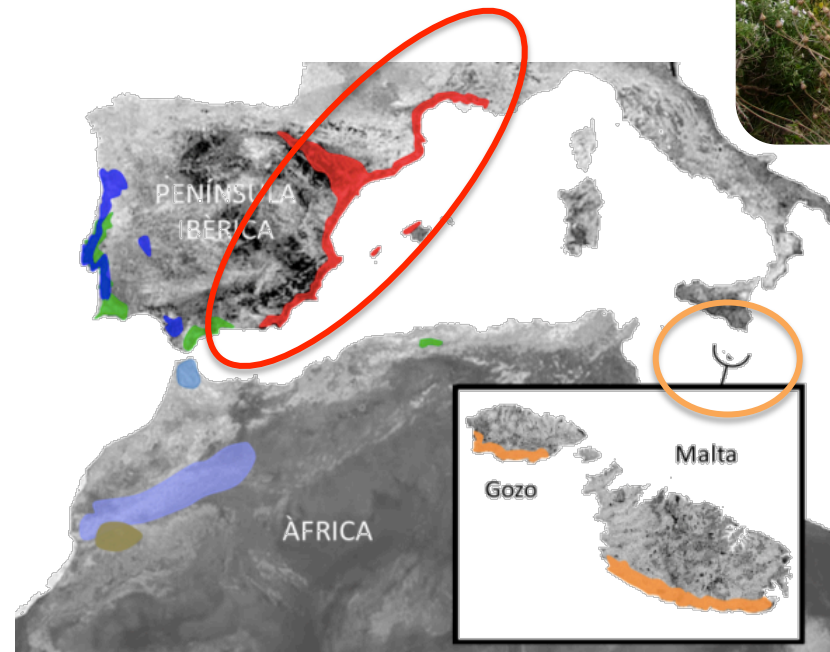
*Cheirolophus crassifolius*



***Cheirolophus* Cass.: c. 28 spp**



*Cheirolophus intybaceus*



*Cheirolophus crassifolius*



# *Cheirolophus* Cass.: c. 28 spp



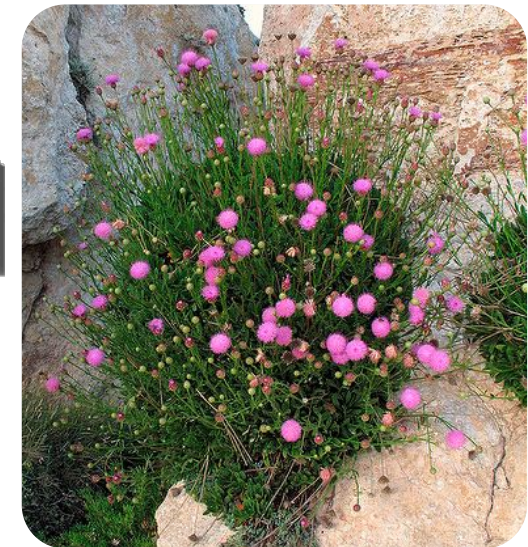
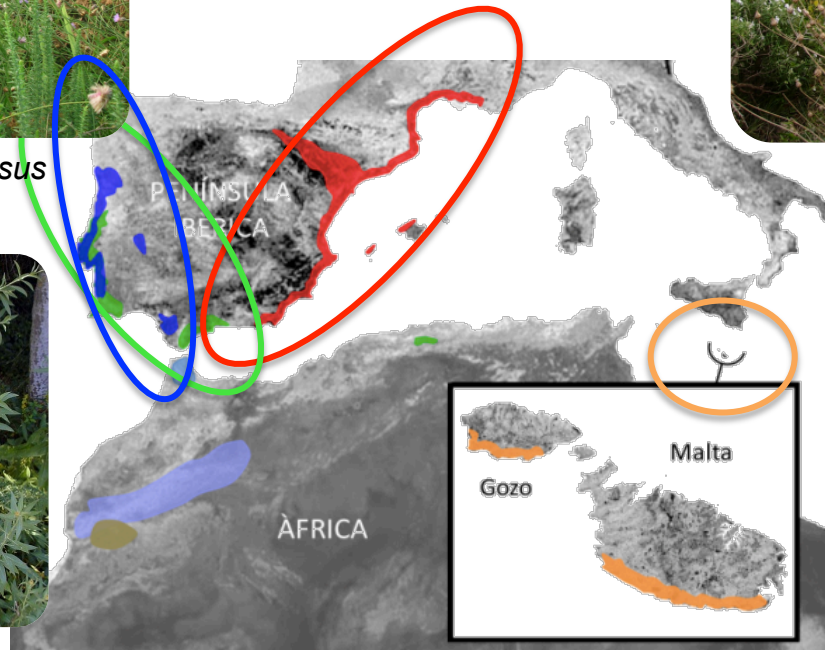
*Cheirolophus uliginosus*



*Cheirolophus intybaceus*



*Cheirolophus sempervirens*



*Cheirolophus crassifolius*



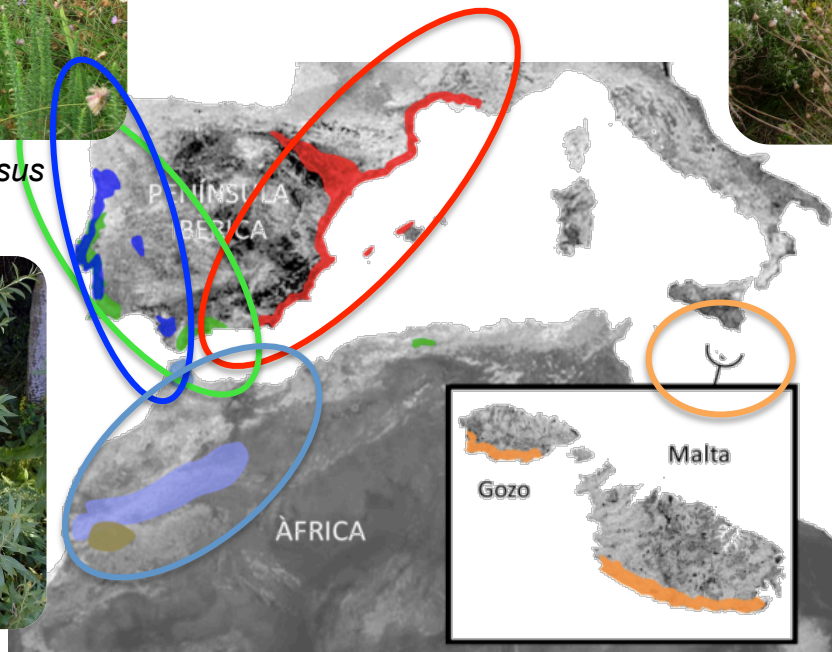
# *Cheirolophus* Cass.: c. 28 spp



*Cheirolophus uliginosus*



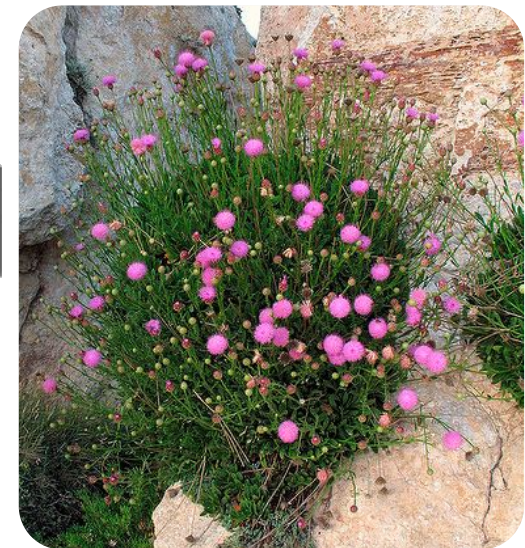
*Cheirolophus intybaceus*



*Cheirolophus sempervirens*

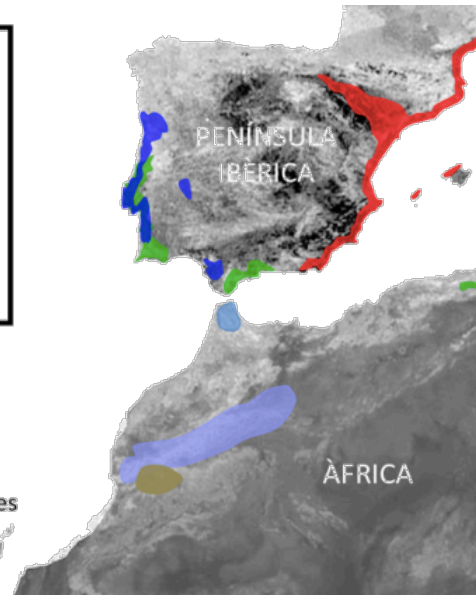
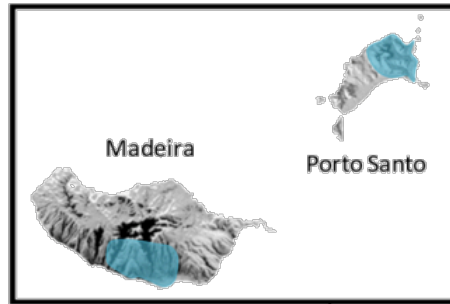


*Cheirolophus tananicus*, *Ch. benoistii* and *Ch. mauritanicus*

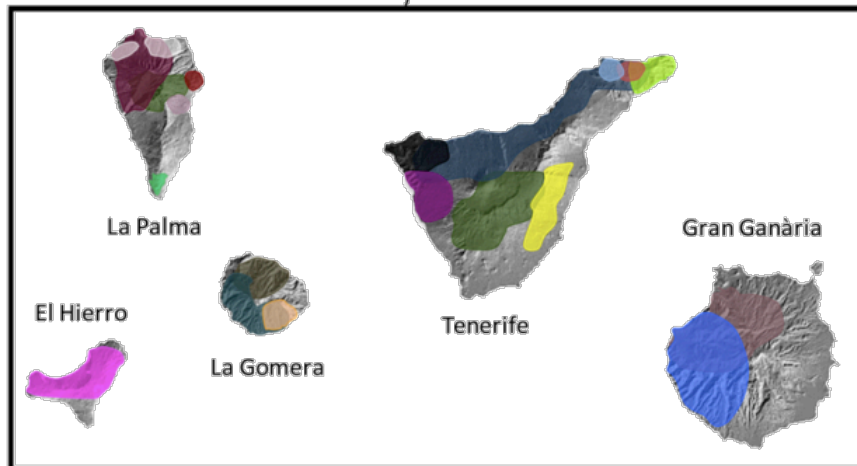





























*Cheirolophus crassifolius*

# *Cheirolophus* Cass.: c. 28 spp



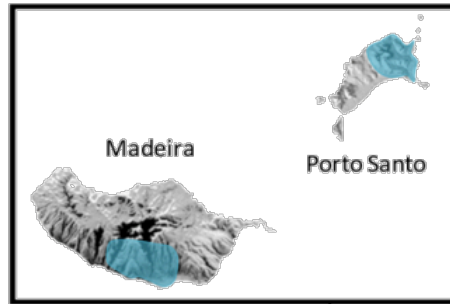
Illes Canàries



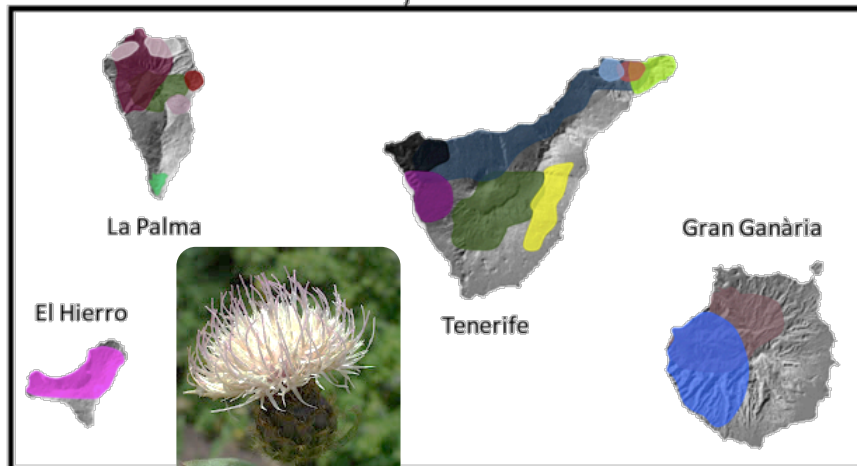
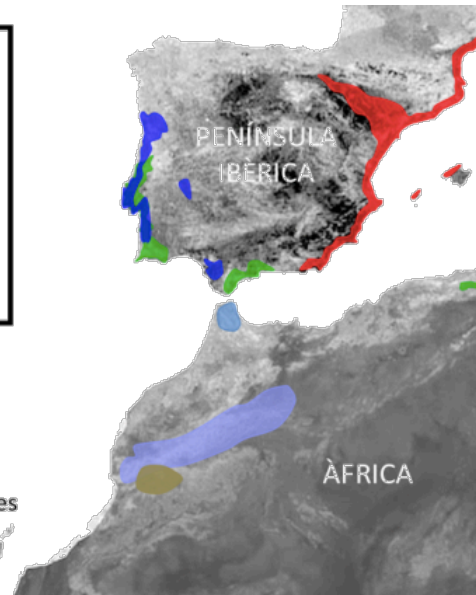
- |  |   |
|--|---|
|  <i>Ch. anagaensis</i>        |  <i>Ch. mauritanicus</i>     |
|  <i>Ch. arboreus</i>          |  <i>Ch. metlesicsii</i>      |
|  <i>Ch. arbutifolius</i>    |  <i>Ch. puntallanensis</i> |
|  <i>Ch. benoistii</i>       |  <i>Ch. santos-abreui</i>  |
|  <i>Ch. burchardii</i>      |  <i>Ch. satarataensis</i>  |
|  <i>Ch. canariensis</i>     |  <i>Ch. sempervirens</i>   |
|  <i>Ch. crassifolius</i>    |  <i>Ch. sventenii</i>      |
|  <i>Ch. dariasii</i>        |  <i>Ch. sp. nova</i>       |
|  <i>Ch. duranii</i>         |  <i>Ch. tagananensis</i>   |
|  <i>Ch. falcisectus</i>     |  <i>Ch. tananicus</i>      |
|  <i>Ch. ghomerythus</i>     |  <i>Ch. teydis</i>         |
|  <i>Ch. intybaceus</i> s.l. |  <i>Ch. uliginosus</i>     |
|  <i>Ch. junonianus</i>      |  <i>Ch. webbianus</i>      |
|  <i>Ch. massonianus</i>     |   |



# *Cheirolophus* Cass.: c. 28 spp



Illes Canàries



- |   |  |
|---|--|
| <span style="color: #4682B4;">■</span> <i>Ch. anagaensis</i>      | <span style="color: #4682B4;">■</span> <i>Ch. mauritanicus</i>   |
| <span style="color: #8B0000;">■</span> <i>Ch. arboreus</i>        | <span style="color: #FFFF00;">■</span> <i>Ch. metlesicsii</i>    |
| <span style="color: #8B4513;">■</span> <i>Ch. arbutifolius</i>    | <span style="color: #8B0000;">■</span> <i>Ch. puntallanensis</i> |
| <span style="color: #6495ED;">■</span> <i>Ch. benoistii</i>       | <span style="color: #8B4513;">■</span> <i>Ch. santos-abreui</i>  |
| <span style="color: #000000;">■</span> <i>Ch. burchardii</i>      | <span style="color: #003366;">■</span> <i>Ch. satarataensis</i>  |
| <span style="color: #800080;">■</span> <i>Ch. canariensis</i>     | <span style="color: #008000;">■</span> <i>Ch. sempervirens</i>   |
| <span style="color: #FF8C00;">■</span> <i>Ch. crassifolius</i>    | <span style="color: #FFFFFF;">■</span> <i>Ch. sventenii</i>      |
| <span style="color: #FFD700;">■</span> <i>Ch. dariasii</i>        | <span style="color: #C00000;">■</span> <i>Ch. sp. nova</i>       |
| <span style="color: #FF00FF;">■</span> <i>Ch. duranii</i>         | <span style="color: #9ACD32;">■</span> <i>Ch. tagananensis</i>   |
| <span style="color: #0000FF;">■</span> <i>Ch. falcisectus</i>     | <span style="color: #8B4513;">■</span> <i>Ch. tananicus</i>      |
| <span style="color: #654321;">■</span> <i>Ch. ghomerythus</i>     | <span style="color: #006400;">■</span> <i>Ch. teydis</i>         |
| <span style="color: #FF0000;">■</span> <i>Ch. intybaceus</i> s.l. | <span style="color: #0000FF;">■</span> <i>Ch. uliginosus</i>     |
| <span style="color: #00FF00;">■</span> <i>Ch. junonianus</i>      | <span style="color: #000080;">■</span> <i>Ch. webbianus</i>      |
| <span style="color: #4682B4;">■</span> <i>Ch. massonianus</i>     |  |



*Cheirolophus burchardii*



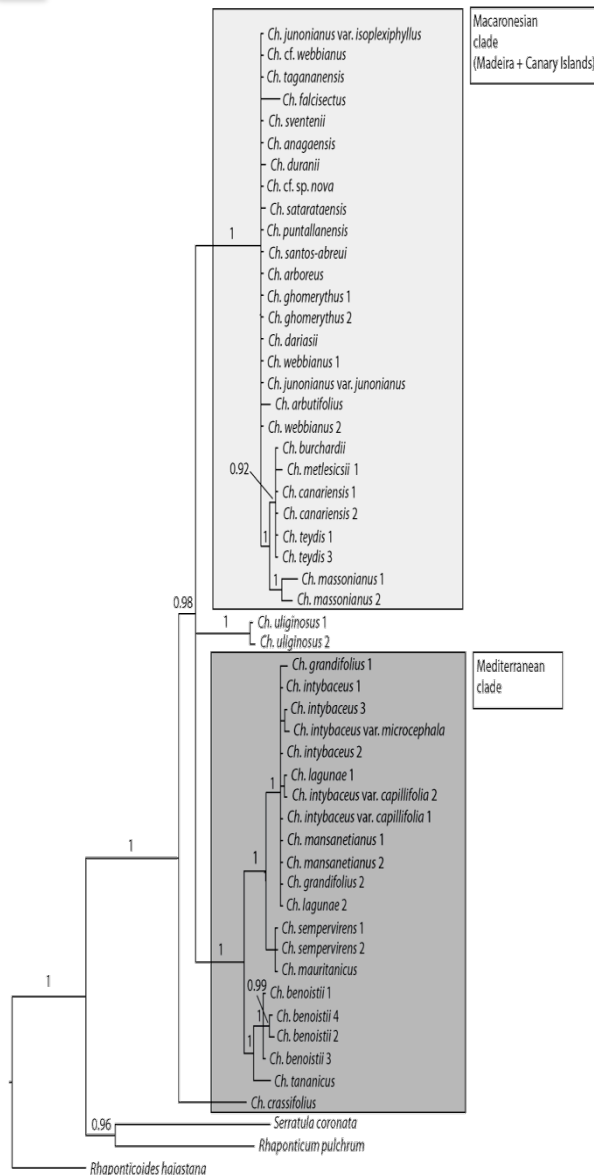
*Cheirolophus satarataensis*



*Cheirolophus falcisectus*

***Cheirolophus* Cass.:**  
**Phylogenetics and diversification**

# Phylogenetics and diversification of *Cheirolophus*



- ITS and ETS provides resolution at the backbone of the tree.

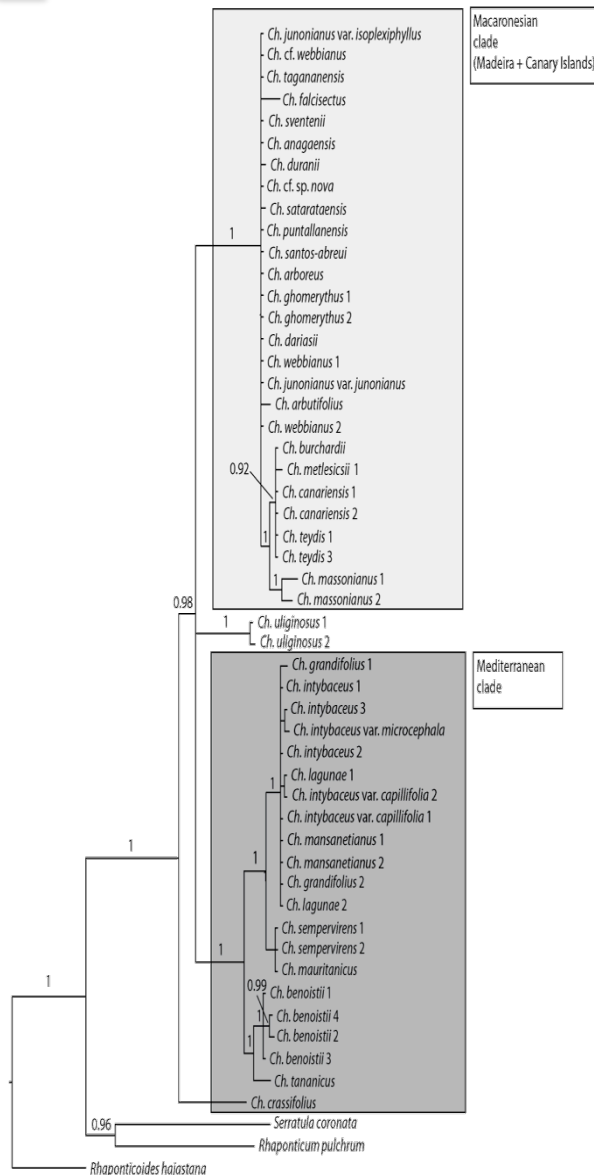
- Monophyly of the genus and early-diverged position of *Ch. crassifolius* from Malta.

- Early-branching of the Iberian hemicryptophyte *Ch. uliginosus*, but not entirely resolved.

- Well defined Mediterranean clade, reflecting morphologic and geographic affinities among the species.

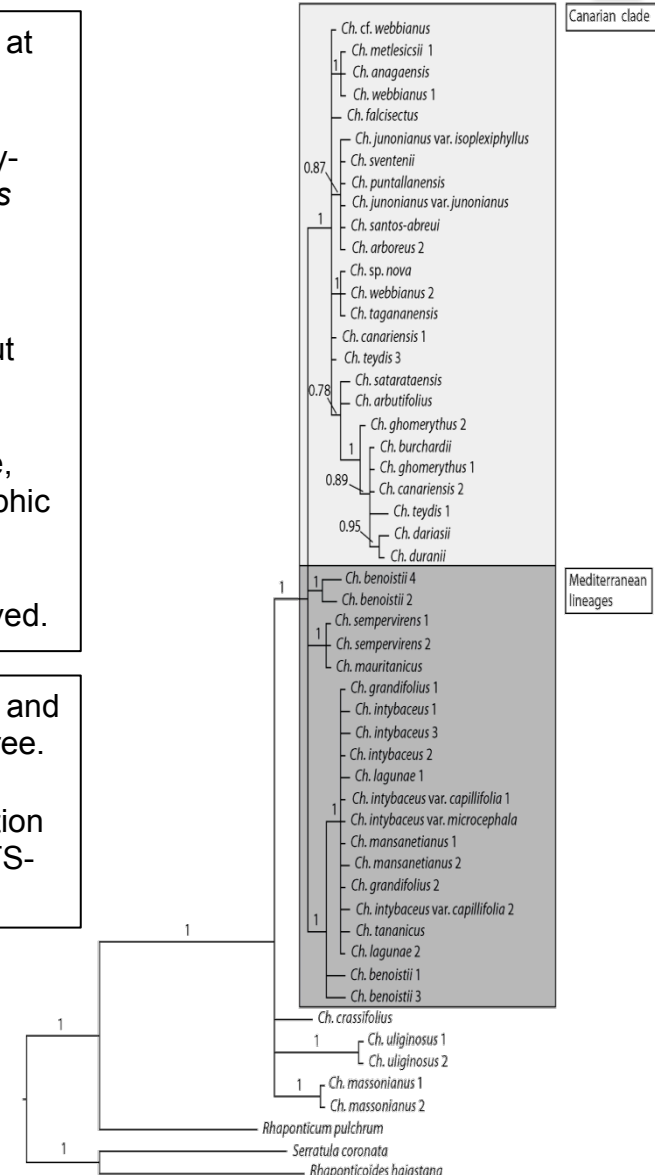
- Macaronesian clade poorly resolved.

# Phylogenetics and diversification of *Cheirolophus*

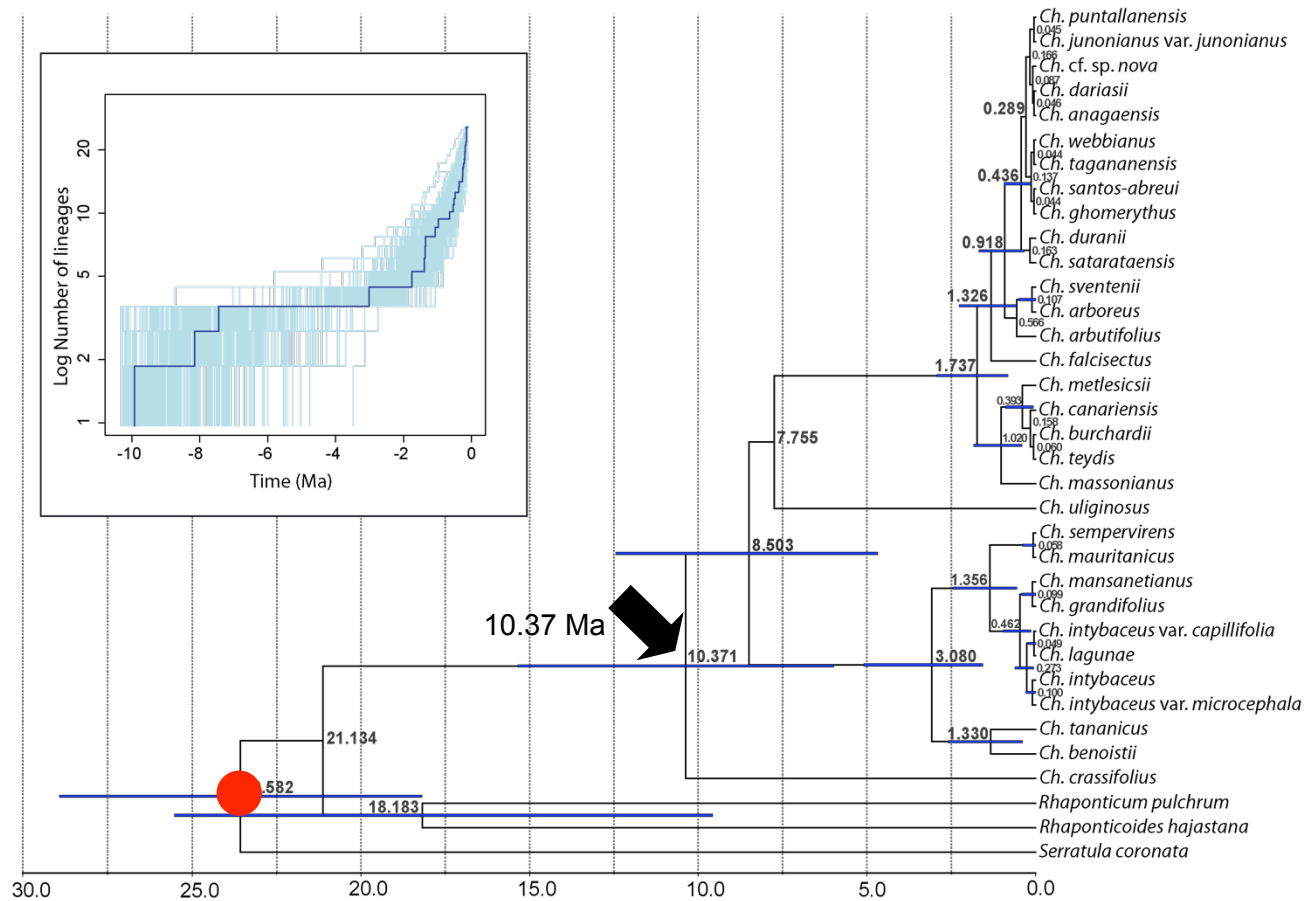


- ITS and ETS provides resolution at the backbone of the tree.
- Monophyly of the genus and early-diverged position of *Ch. crassifolius* from Malta.
- Early-branching of the Iberian hemicryptophyte *Ch. uliginosus*, but not entirely resolved.
- Well defined Mediterranean clade, reflecting morphologic and geographic affinities among the species.
- Macaronesian clade poorly resolved.

- Plastid DNA shows less variability and resolution at the backbone of the tree.
- More variability and better resolution within the Canarian lineage than ITS-ETS.



# Phylogenetics and diversification of *Cheirolophus*

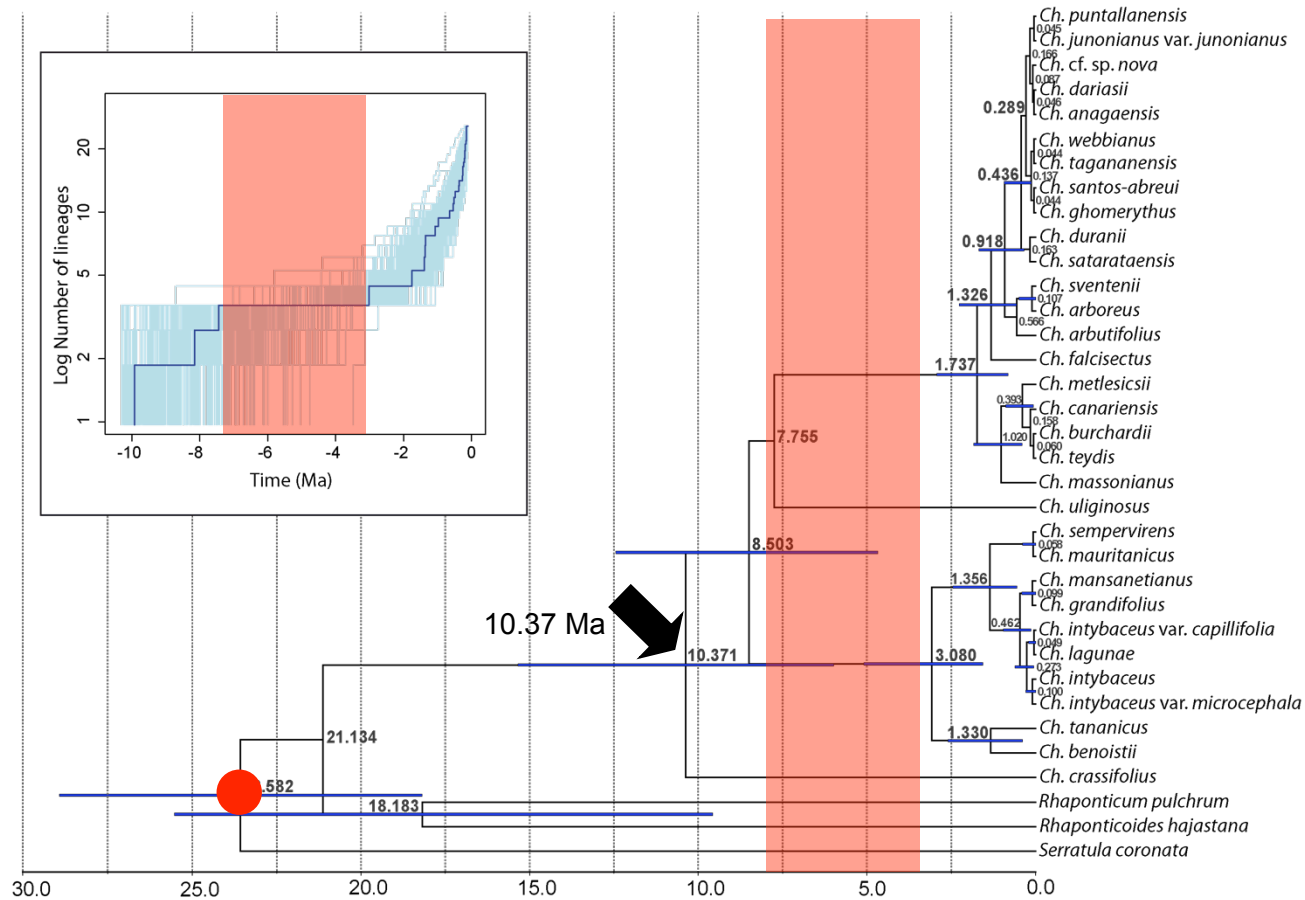


i) Origin of the genus: mid-late Miocene

● 24.51 Ma; Barres *et al.* 2013.



# Phylogenetics and diversification of *Cheirolophus*

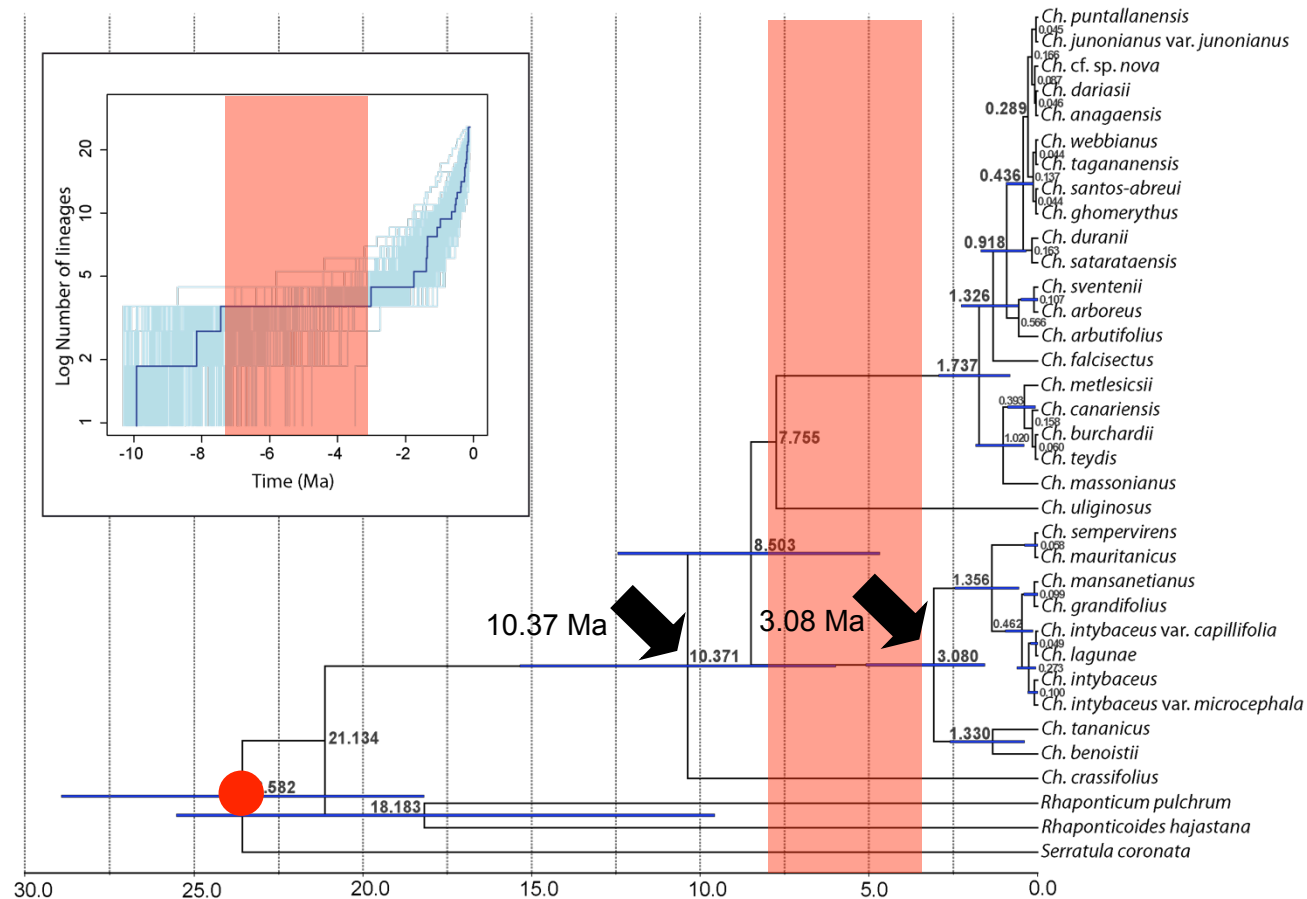


● 24.51 Ma; Barres et al. 2013.

i) Origin of the genus: mid-late Miocene

ii) Gap in diversification during 5 My.

# Phylogenetics and diversification of *Cheirolophus*



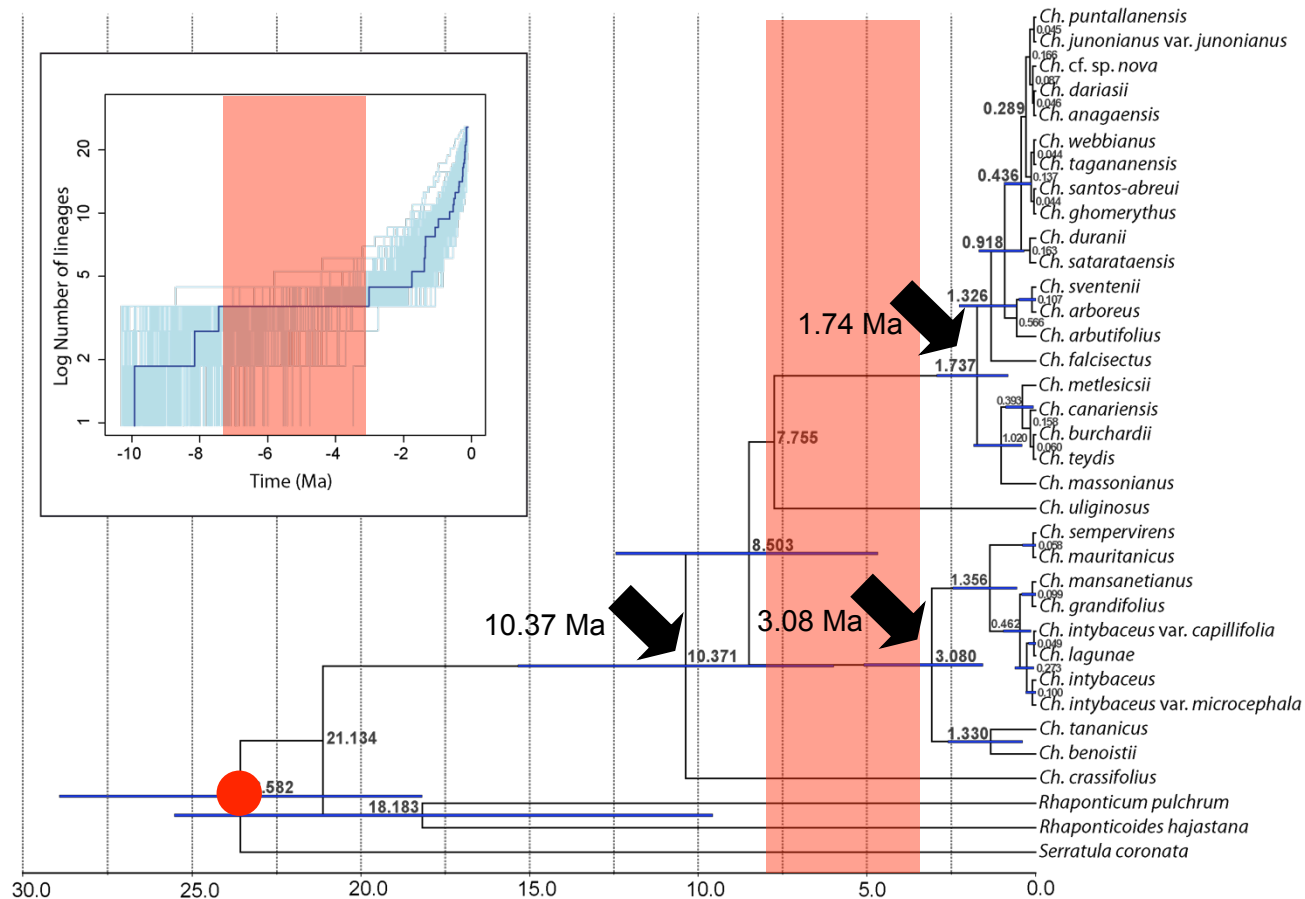
i) Origin of the genus: mid-late Miocene

ii) Gap in diversification during 5 My.

iii) New burst of diversification after 3 Ma. (Mediterranean)

● 24.51 Ma; Barres *et al.* 2013.

# Phylogenetics and diversification of *Cheirolophus*



● 24.51 Ma; Barres *et al.* 2013.

i) Origin of the genus: mid-late Miocene

ii) Gap in diversification during 5 My.

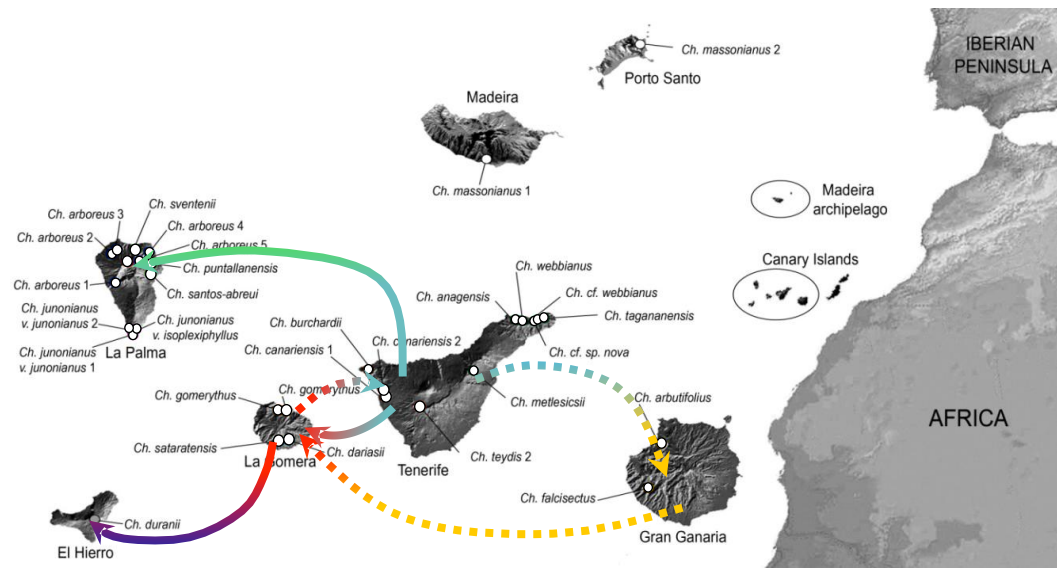
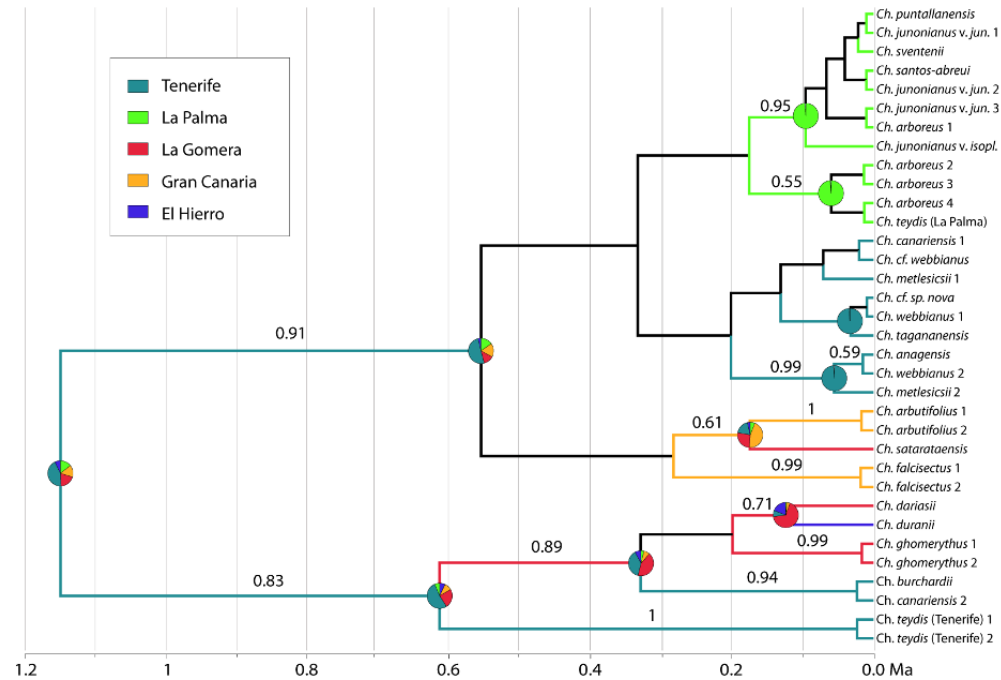
iii) New burst of diversification after 3 Ma. (Mediterranean)

iv) New burst of accelerated diversification after 1.7 Ma. (Macaronesia)

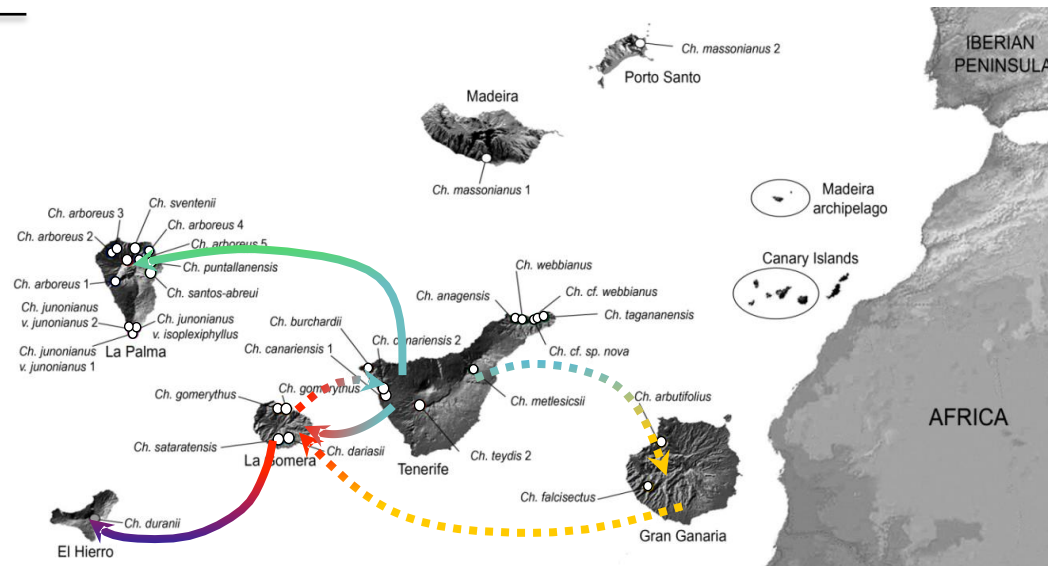
# Phylogenetics and diversification of *Cheirolophus*

## Multiple processes involved in radiation:

- Colonisation between islands
- Intra-island allopatric speciation
- Incipient ecological adaptation
- Hybridisation signals

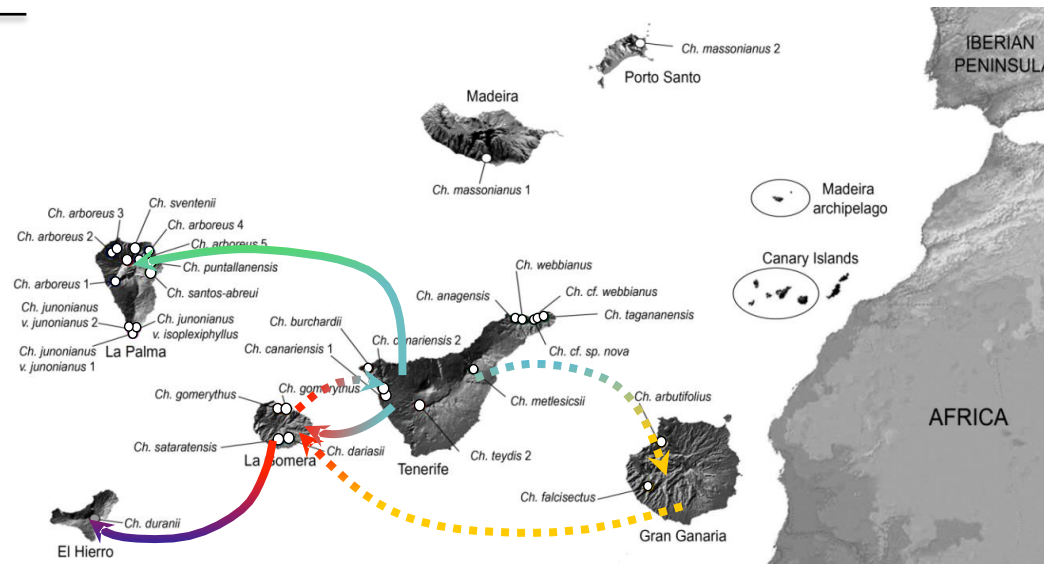


# Phylogenetics and diversification of *Cheirolophus*



- Multiple colonizations intra- and inter-islands
- Sporadic long distance dispersal ability

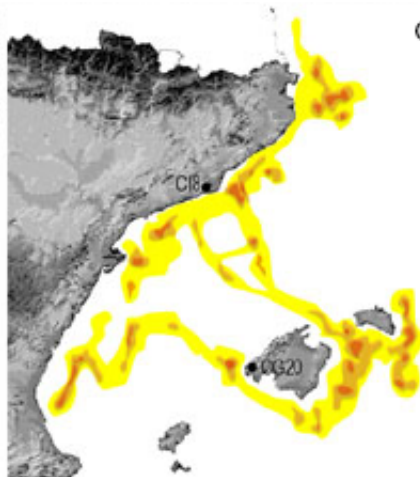
# Phylogenetics and diversification of *Cheirolophus*



- Multiple colonizations intra- and inter-islands
- Sporadic long distance dispersal ability



*Ch. intybaceus*; Garnatje et al. (2012)

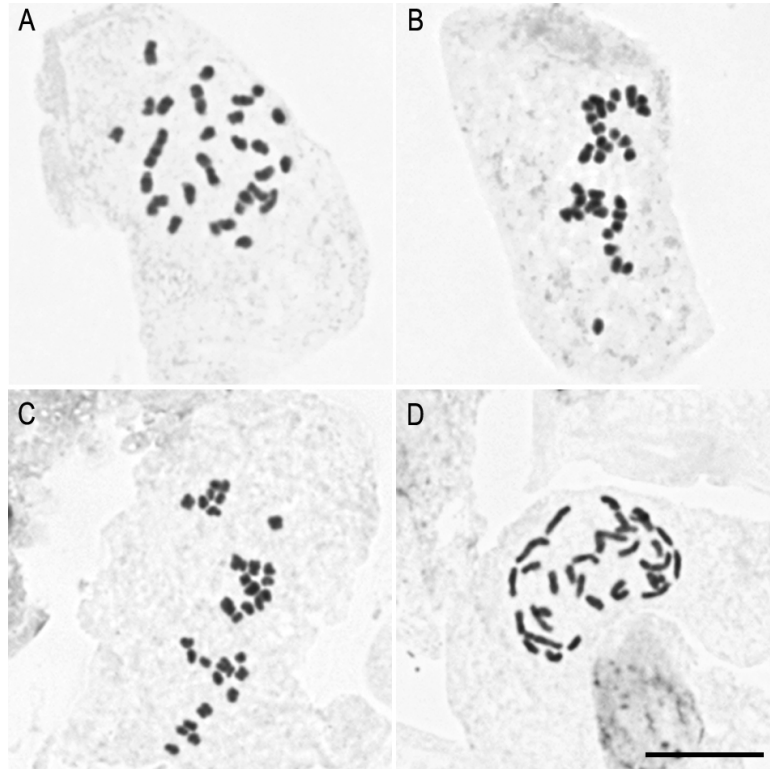


*Calonectris diomedea*

***Cheirolophus* Cass.:**  
**Chromosome evolution**

# Chromosome evolution in *Cheirolophus*

Chromosome numbers

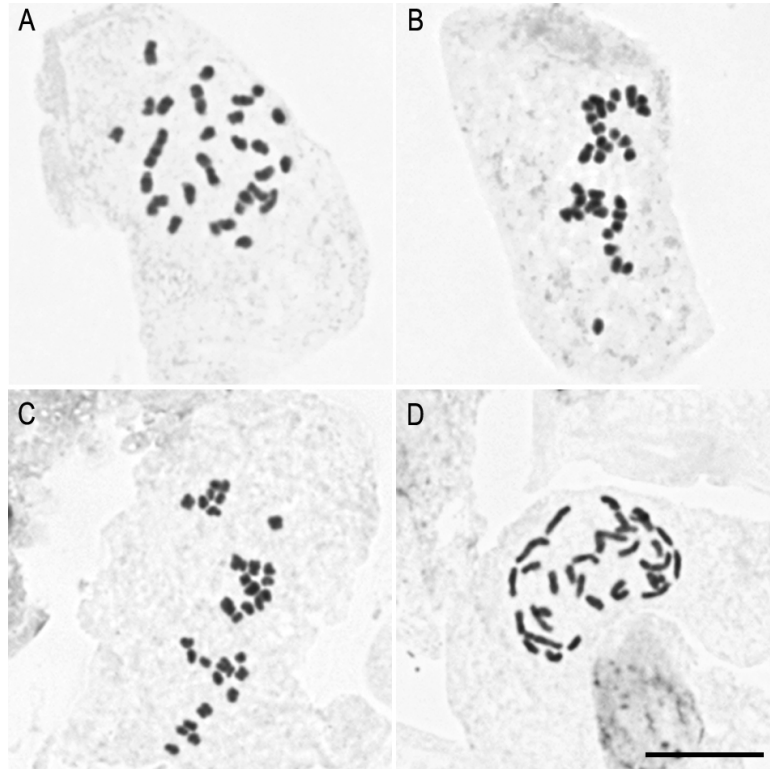


- Chromosome counts for c. 25 spp.  $2n = 30,32$



# Chromosome evolution in *Cheirolophus*

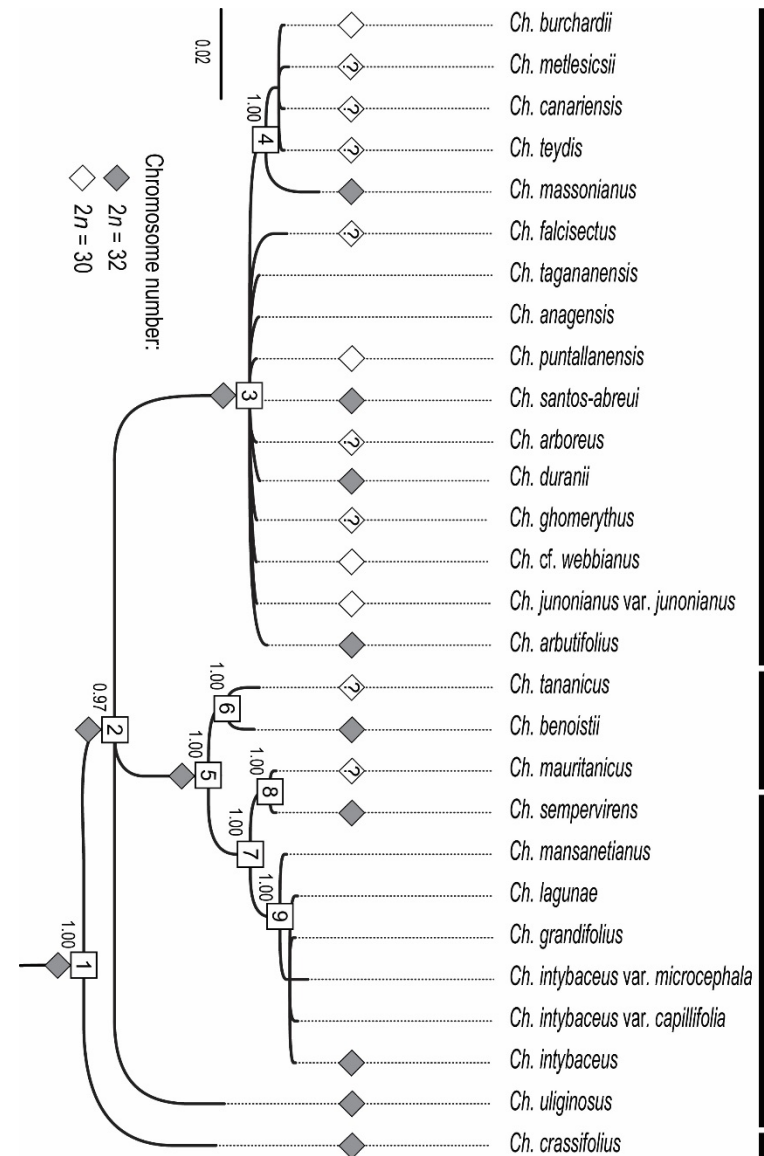
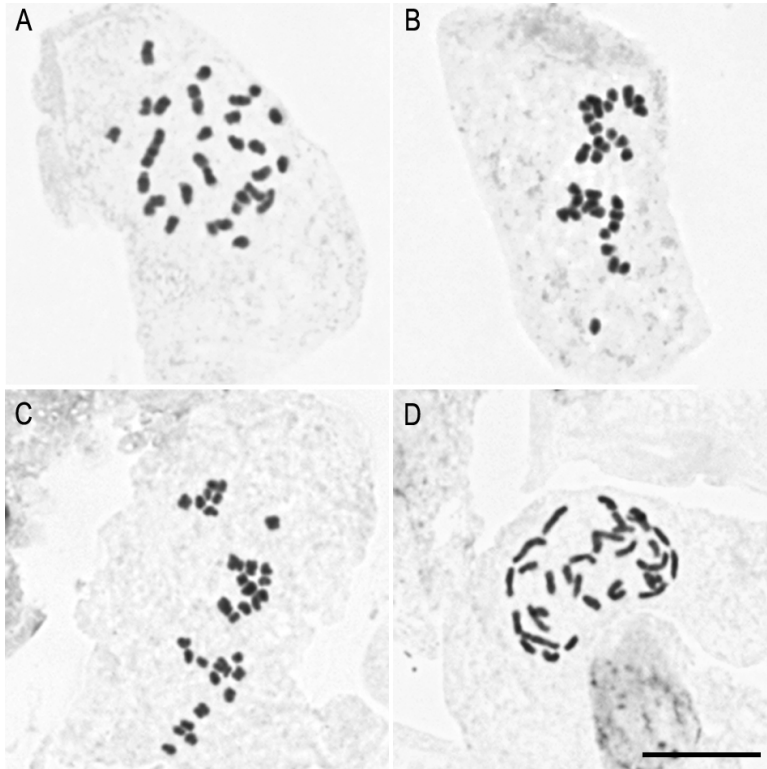
## Chromosome numbers



- Chromosome counts for c. 25 spp.  $2n = 30,32$
- The chromosome number  $2n = 32$  is more frequent than previously reported.
- The ancestral chromosome number in *Cheirolophus* is  $2n = 32$ , appearing  $2n = 30$  several independent times in the evolutionary history of the genus.

# Chromosome evolution in *Cheirolophus*

## Chromosome numbers



- Chromosome counts for c. 25 spp.  $2n = 30, 32$
- The chromosome number  $2n = 32$  is more frequent than previously reported.
- The ancestral chromosome number in *Cheirolophus* is  $2n = 32$ , appearing  $2n = 30$  several independent times in the evolutionary history of the genus.

# **Chromosome evolution in islands**

# Chromosome evolution in islands

**Oceanic islands → STASIS...**

# Chromosome evolution in islands

Oceanic islands → STASIS...

## ENDEMICIS

314

*Tod F. Stuessy and Daniel J. Crawford*

Table 12.4. *Known chromosome counts among species of endemic genera of the Canary Islands with two or more species*

Genus	Number of endemic species on islands	Number of species counted	Chromosome number
<i>Allagopappus</i> (Compositae)	2	2	$n = 10$
<i>Gonospermum</i> (Compositae)	4	4	$n = 9$
<i>Greenovia</i> (Crassulaceae)	4	3	$n = 18$
<i>Parolinia</i> (Cruciferae)	4	4	$n = 11$
<i>Schizogyne</i> (Compositae)	2	2	$n = 9$
<i>Spartocytisus</i> (Leguminosae)	2	2	$n = 24$

Data from Ardévol González, Borgen & Pérez de Pax (1993)



# Chromosome evolution in islands

Oceanic islands → STASIS...

## ENDEMICIS

314 *Tod F. Stuessy and Daniel J. Crawford*

Table 12.4. Known chromosome counts among species of endemic genera of the Canary Islands with two or more species

Genus	Number of endemic species on islands	Number of species counted	Chromosome number
<i>Allagopappus</i> (Compositae)	2	2	$n = 10$
<i>Gonospermum</i> (Compositae)	4	4	$n = 9$
<i>Greenovia</i> (Crassulaceae)	4	3	$n = 18$
<i>Parolinia</i> (Cruciferae)	4	4	$n = 11$
<i>Schizogyne</i> (Compositae)	2	2	$n = 9$
<i>Spartocytisus</i> (Leguminosae)	2	2	$n = 24$

Data from Ardévol González, Borgen & Pérez de Pax (1993)

315 *Chromosomal stasis during speciation*

Table 12.5. Selected genera of the Canary Islands that have considerable numbers of endemic species and for which cytological data are available

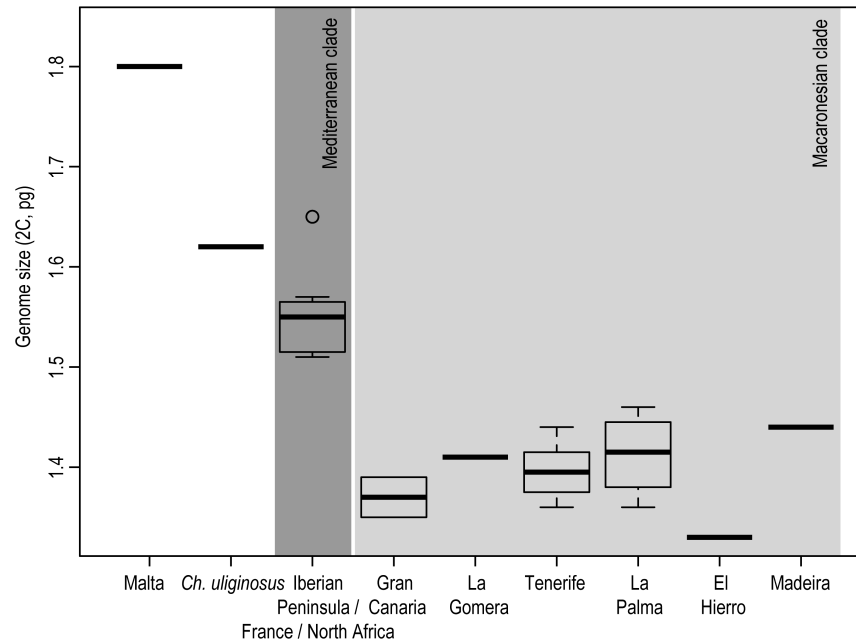
Genus	Number of endemic species on islands	Number of species counted	Chromosome number(s)
<i>Aeonium</i> (Crassulaceae)	28	28	$n = 18, 36$
<i>Argyranthemum</i> (Compositae)	17 <sup>a</sup>	17	$n = 9$
<i>Centaurea</i> (Compositae)	10	7	$n = 14, 15, 16$
<i>Convolvulus</i> (Convolvulaceae)	10	4	$n = 12, 15$
<i>Echium</i> (Boraginaceae)	22	14	$n = 8$
<i>Euphorbia</i> (Euphorbiaceae)	11	6	$n = 10, 30$
<i>Limonium</i> (Plumbaginaceae)	13	12	$n = 6, 7, 12, 16$
<i>Lotus</i> (Leguminosae)	12	12	$n = 7, 14$
<i>Monanthes</i> (Crassulaceae)	13	9	$n = 18, 36$
<i>Senecio</i> (Compositae)	12	8	$n = 20, 30$
<i>Sonchus</i> (Compositae)	28	28	$n = 9$
<i>Taekholmia</i> (Compositae)	3	3	$n = 9$
<i>Tolpis</i> (Compositae)	6	6	$n = 9$

<sup>a</sup>A total of 22 species in Macaronesia (Humphries, 1976; Bremer & Humphries, 1993)  
From Ardévol González, Borgen & Pérez de Pax (1993)

***Cheirolophus* Cass.:**

**Nuclear DNA contents**

# Genome size evolution in *Cheirolophus*

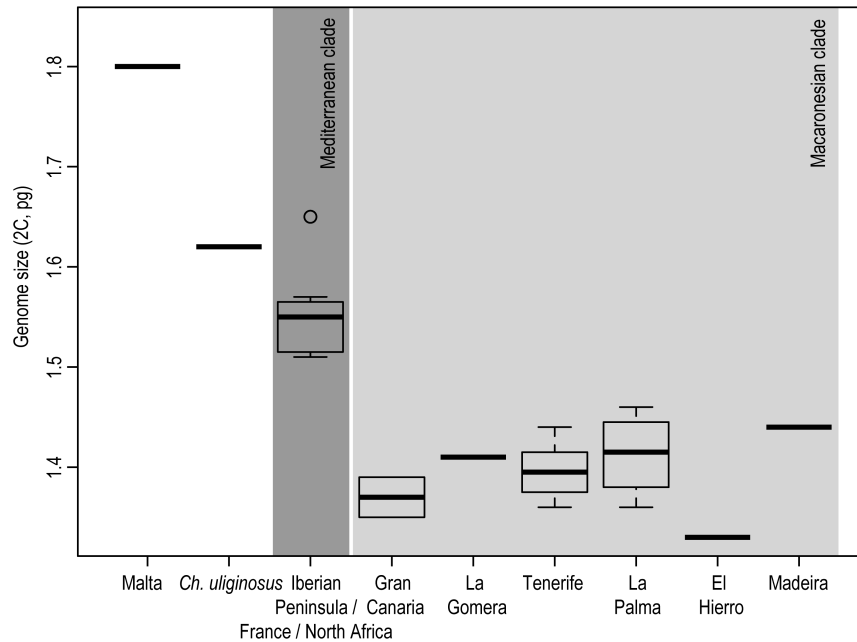


**2C-values: 1.30-1.80 pg**

- New data confirm that of Garnatje et al. (2007), where significant differences in GS among Mediterranean and Macaronesian species were observed
- *Ch. crassifolius* shows the highest value of DNA amount, indicating a progressive decline of GS since the origin of the diversification of the genus.



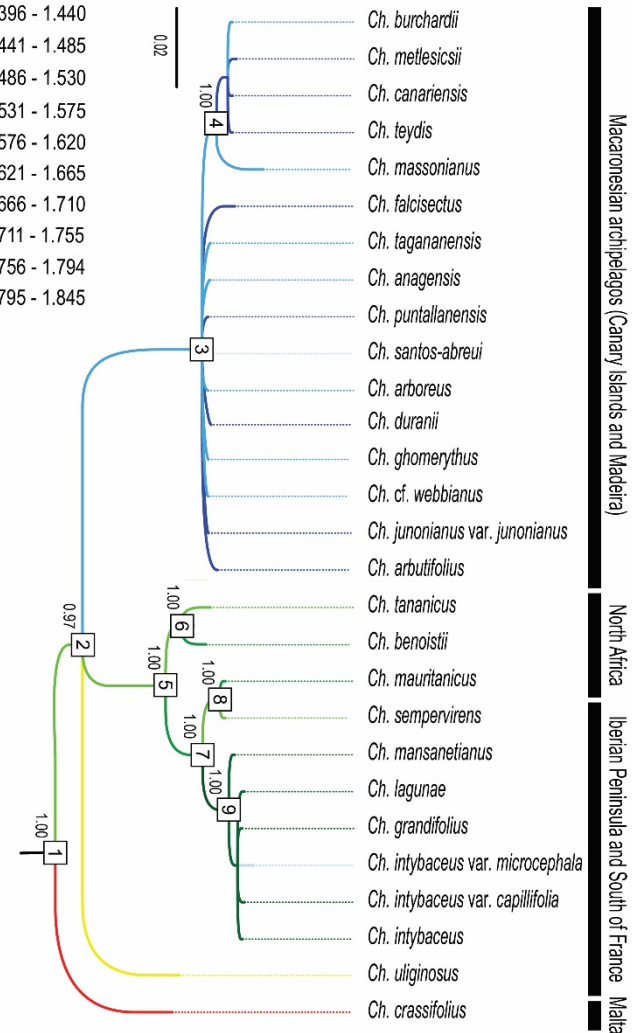
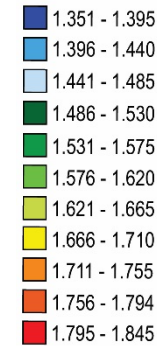
# Genome size evolution in *Cheirolophus*



**2C-values: 1.30-1.80 pg**

- New data confirm that of Garnatje et al. (2007), where significant differences in GS among Mediterranean and Macaronesian species were observed
- *Ch. crassifolius* shows the highest value of DNA amount, indicating a progressive decline of GS since the origin of the diversification of the genus.
- The descending pattern would be particularly strong in the oceanic islands, consistent with the results found in other plant groups.

2C-values (pg) indicated by branch colour:

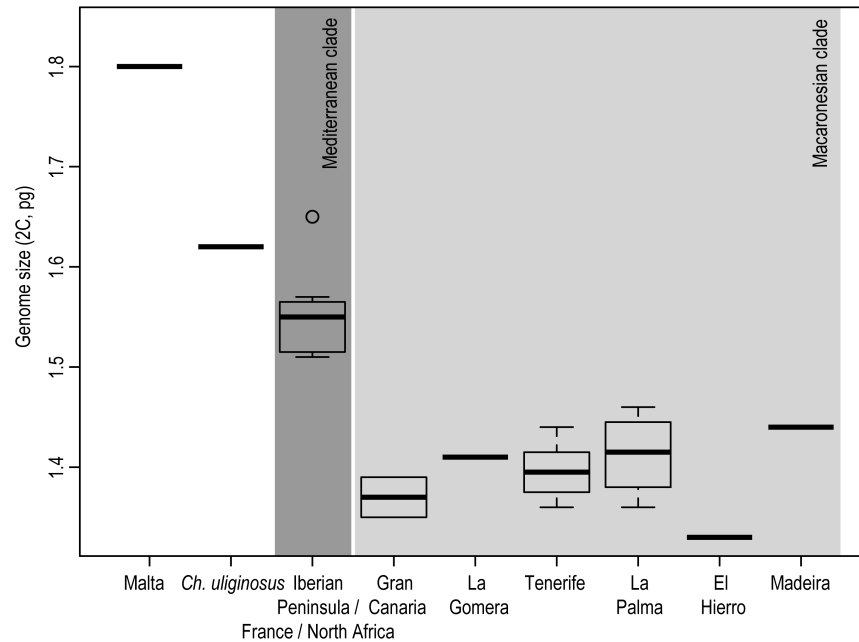


Macaronesian archipelagos (Canary Islands and Madeira)

North Africa

Iberian Peninsula and South of France, Malta

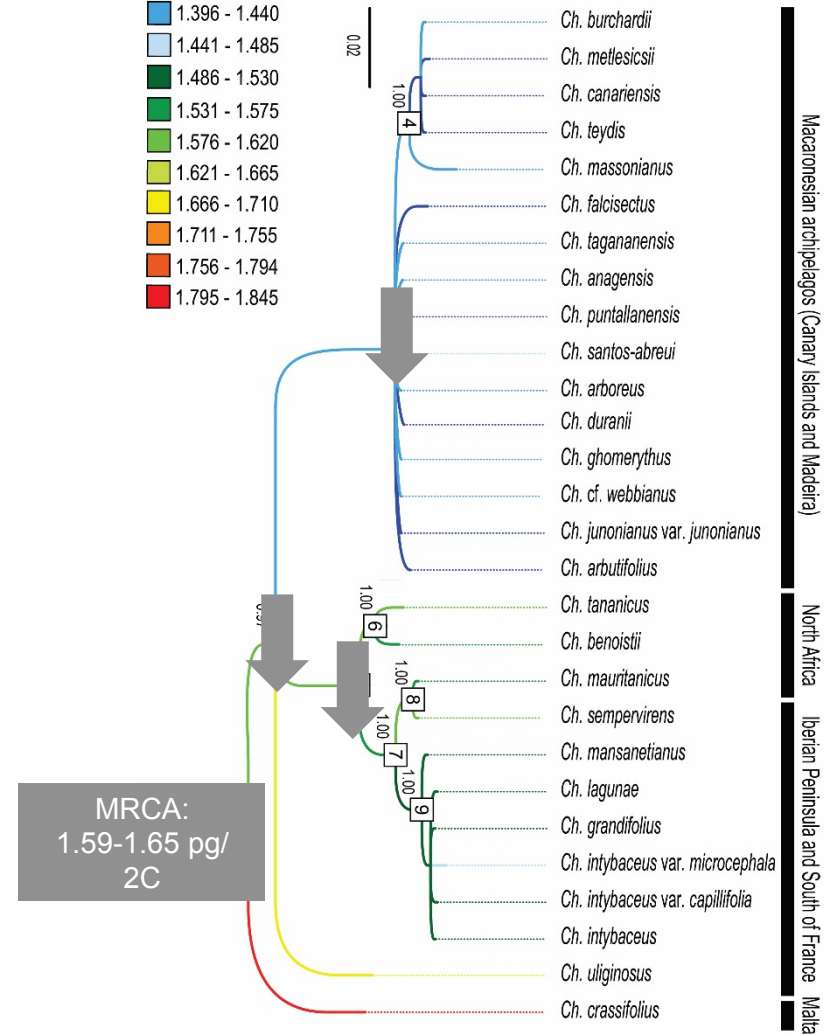
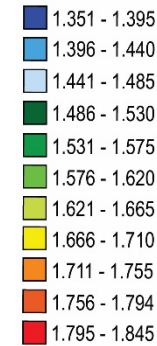
# Genome size evolution in *Cheirolophus*



**2C-values: 1.30-1.80 pg**

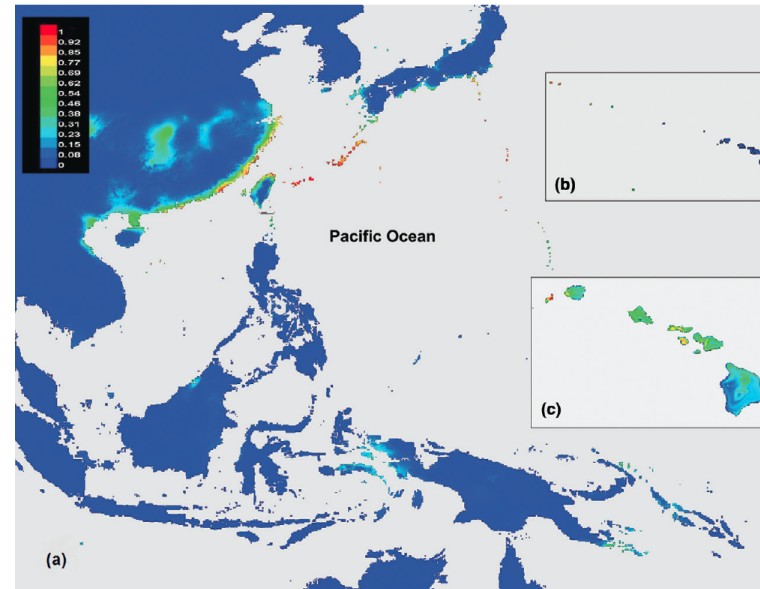
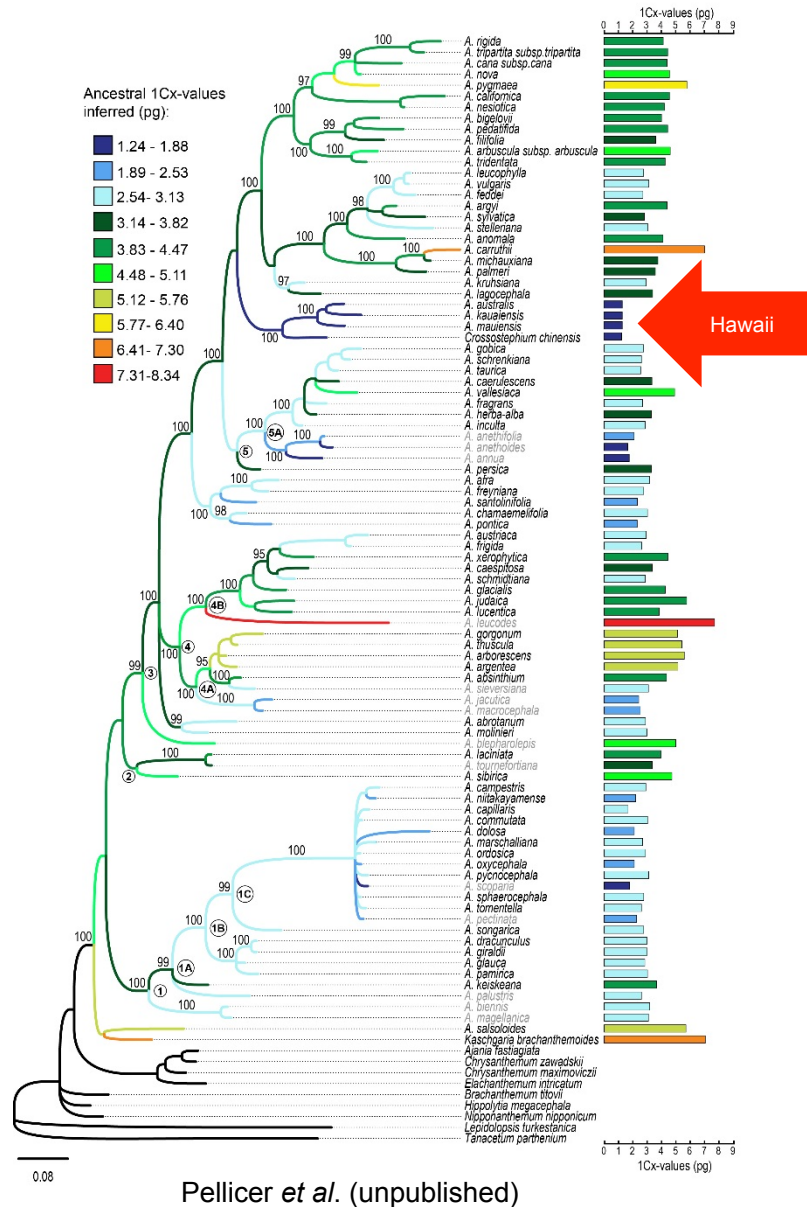
- New data confirm that of Garnatje et al. (2007), where significant differences in GS among Mediterranean and Macaronesian species were observed
- *Ch. crassifolius* shows the highest value of DNA amount, indicating a progressive decline of GS since the origin of the diversification of the genus.
- The descending pattern would be particularly strong in the oceanic islands, consistent with the results found in other plant groups.

2C-values (pg) indicated by branch colour:

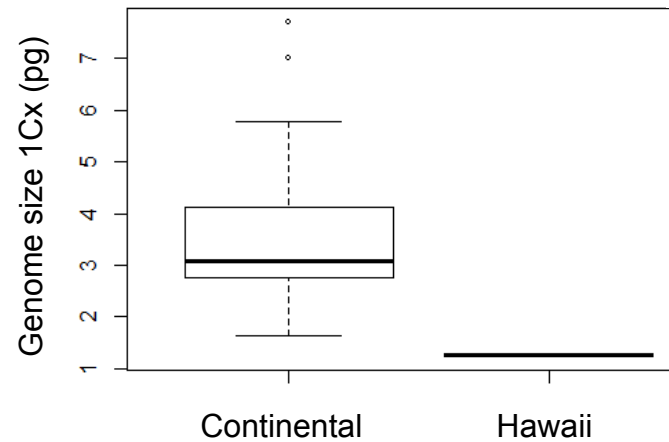


# Genome size evolution: island colonisations

## Artemisia

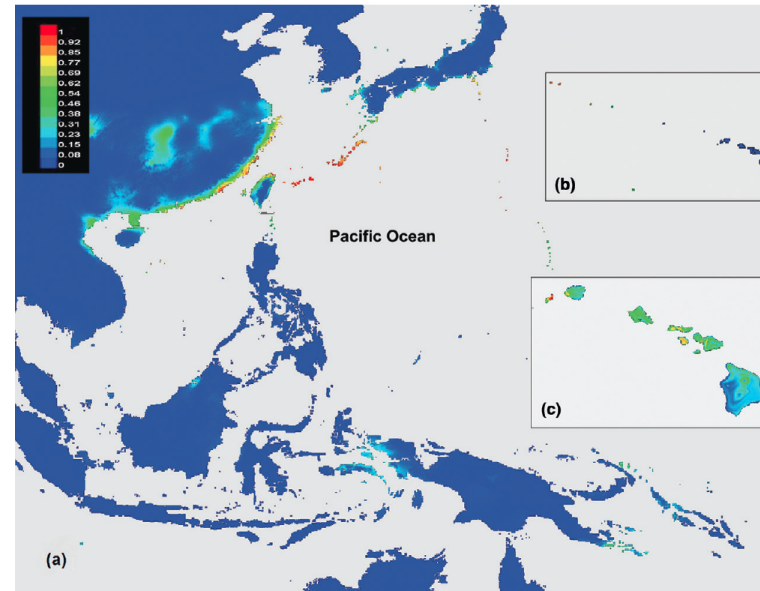
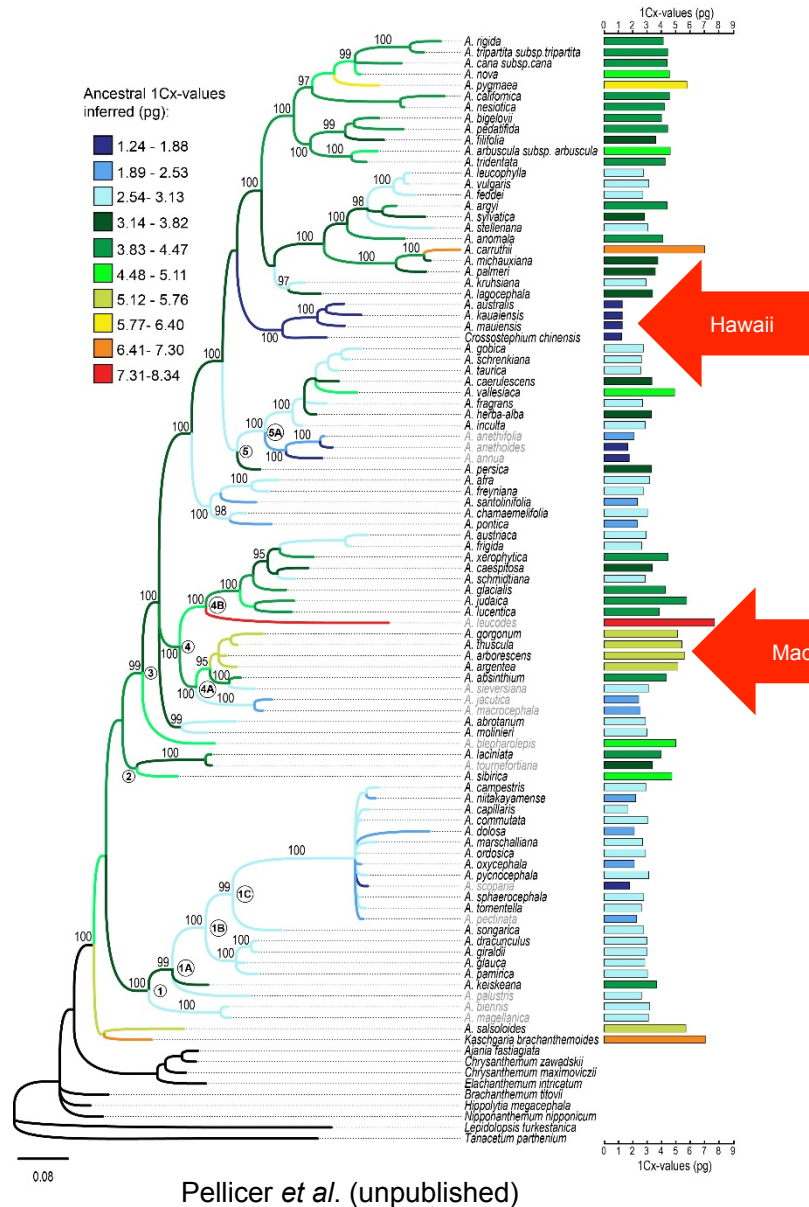


Hobbs & Baldwin 2013, 40: 442-454

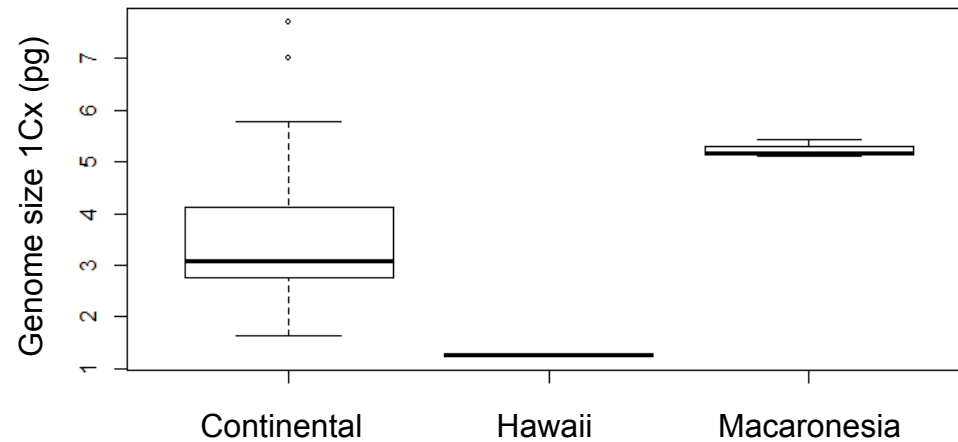


# Genome size evolution: island colonisations

## Artemisia



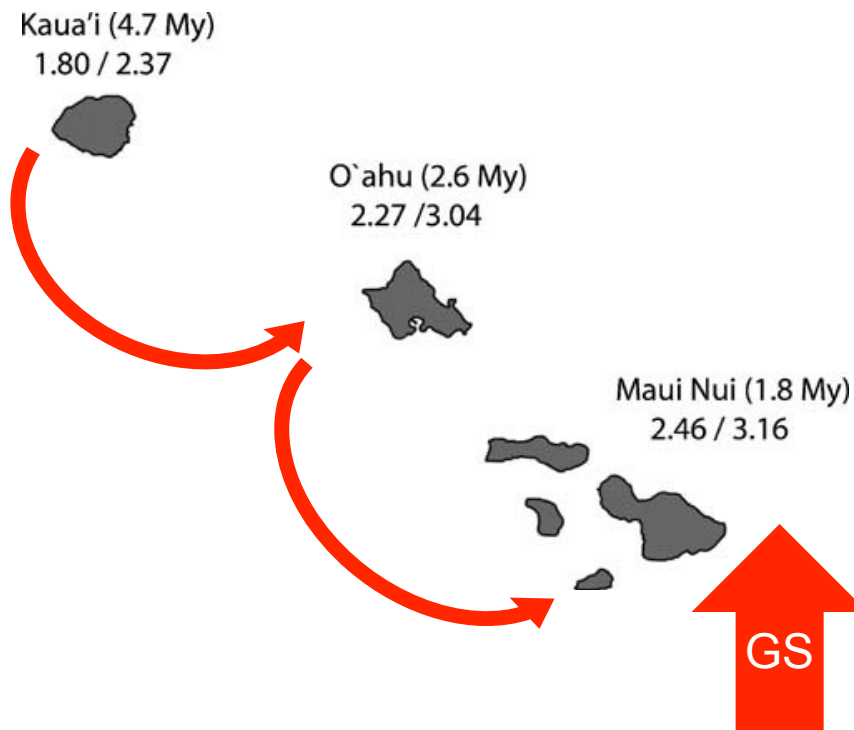
Hobbs & Baldwin 2013, 40: 442-454



# Genome size evolution: island colonisations

## Hawaiian *Schiedea*

...“Unexpectedly, genomes of *Schiedea* species appeared to be relatively compact (1.41 to 3.74 pg/cell), compared to *Honckenya* (8.57 to 10.66 pg/cell)”...



# Genome size evolution: island colonisations

## Hawaiian *Schiedea*

...“Unexpectedly, genomes of *Schiedea* species appeared to be relatively compact (1.41 to 3.74 pg/cell), compared to *Honckenya* (8.57 to 10.66 pg/cell)”...

Kaua'i (4.7 My)  
1.80 / 2.37



O'ahu (2.6 My)  
2.27 / 3.04



Maui Nui (1.8 My)  
2.46 / 3.16



### Research Article

## Does Large Genome Size Limit Speciation in Endemic Island Floras?

Maxim V. Kapralov and Dmitry A. Filatov

Department of Plant Sciences, University of Oxford, South Parks Road, Oxford OX1 3RB, UK

Correspondence should be addressed to Maxim V. Kapralov, maxim.kapralov@plants.ox.ac.uk

Received 27 May 2011; Accepted 28 August 2011

Academic Editor: Andrea Polle



# Genome size evolution: island colonisations

## Hawaiian *Schiedea*

...“Unexpectedly, genomes of *Schiedea* species appeared to be relatively compact (1.41 to 3.74 pg/cell), compared to *Honckenya* (8.57 to 10.66 pg/cell)”...

Kaua'i (4.7 My)  
1.80 / 2.37



O'ahu (2.6 My)  
2.27 / 3.04



Maui Nui (1.8 My)  
2.46 / 3.16



### Research Article

## Does Large Genome Size Limit Speciation in Endemic Island Floras?

Maxim V. Kapralov and Dmitry A. Filatov

Department of Plant Sciences, University of Oxford, South Parks Road, Oxford OX1 3RB, UK

Correspondence should be addressed to Maxim V. Kapralov, maxim.kapralov@plants.ox.ac.uk

Received 27 May 2011; Accepted 28 August 2011

Academic Editor: Andrea Polle

# YES, but...

# Genome size evolution: island colonisations

*Research Article*

## **Does Large Genome Size Limit Speciation in Endemic Island Floras?**

**Maxim V. Kapralov and Dmitry A. Filatov**

*Department of Plant Sciences, University of Oxford, South Parks Road, Oxford OX1 3RB, UK*

Correspondence should be addressed to Maxim V. Kapralov, maxim.kapralov@plants.ox.ac.uk

Received 27 May 2011; Accepted 28 August 2011

Academic Editor: Andrea Polle

- Radiation processes only takes place involving species with smaller genome sizes

# Genome size evolution: island colonisations

*Research Article*

## **Does Large Genome Size Limit Speciation in Endemic Island Floras?**

**Maxim V. Kapralov and Dmitry A. Filatov**

*Department of Plant Sciences, University of Oxford, South Parks Road, Oxford OX1 3RB, UK*

Correspondence should be addressed to Maxim V. Kapralov, maxim.kapralov@plants.ox.ac.uk

Received 27 May 2011; Accepted 28 August 2011

Academic Editor: Andrea Polle

- Radiation processes only takes place involving species with smaller genome sizes
- Genome downsizing has a direct impact in facilitating/enhancing the radiation process

# Genome size evolution: island colonisations

*Research Article*

## **Does Large Genome Size Limit Speciation in Endemic Island Floras?**

**Maxim V. Kapralov and Dmitry A. Filatov**

*Department of Plant Sciences, University of Oxford, South Parks Road, Oxford OX1 3RB, UK*

Correspondence should be addressed to Maxim V. Kapralov, maxim.kapralov@plants.ox.ac.uk

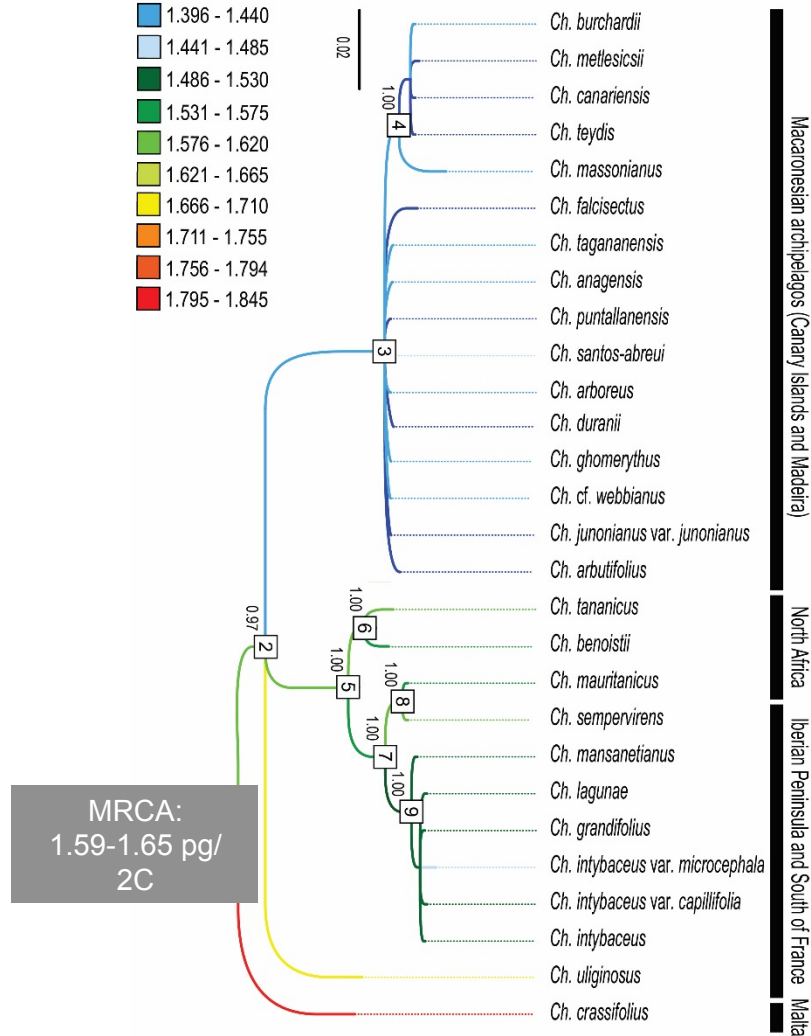
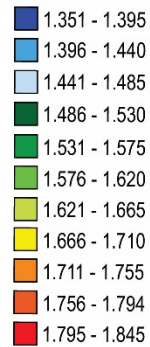
Received 27 May 2011; Accepted 28 August 2011

Academic Editor: Andrea Polle

- Radiation processes only takes place involving species with smaller genome sizes
- Genome downsizing has a direct impact in facilitating/enhancing the radiation process
- Genome downsizing is just a consequence of the radiation, with no role in the evolutionary processes

# Genome size evolution in *Cheirolophus*

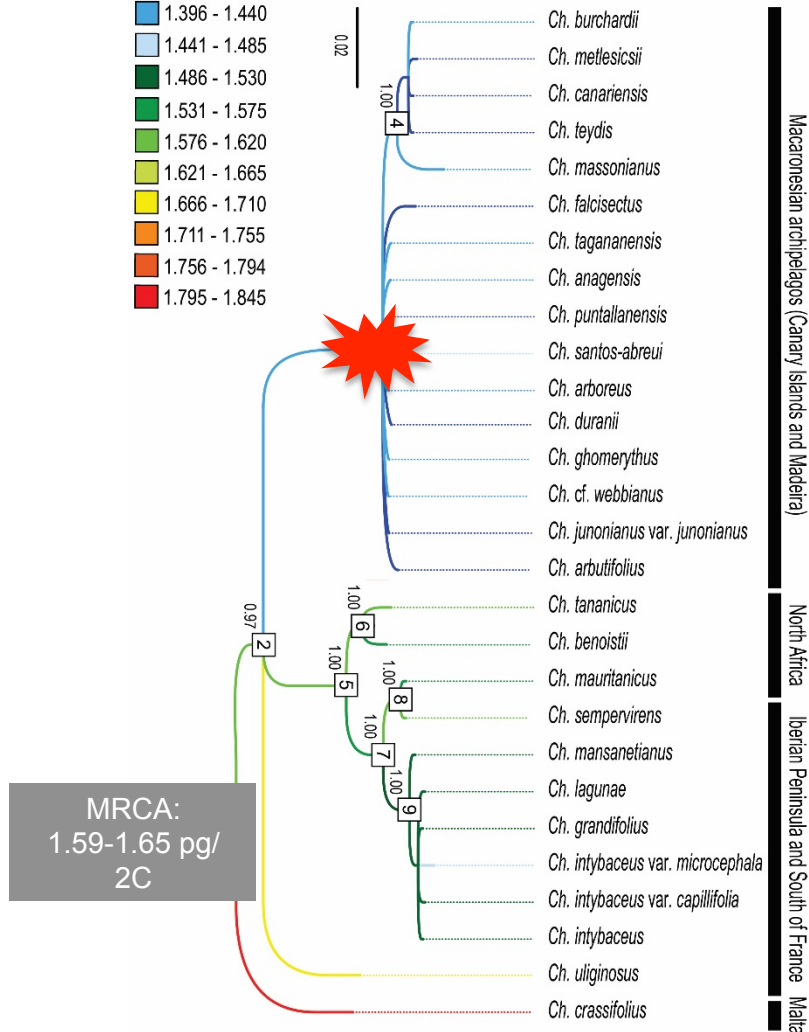
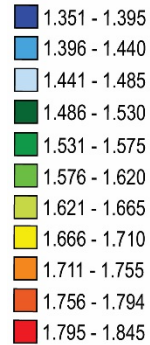
2C-values (pg) indicated by branch colour:



- Selective forces favour species with small genome: MRCA c.1.6pg/2C

# Genome size evolution in *Cheirolophus*

2C-values (pg) indicated  
by branch colour:

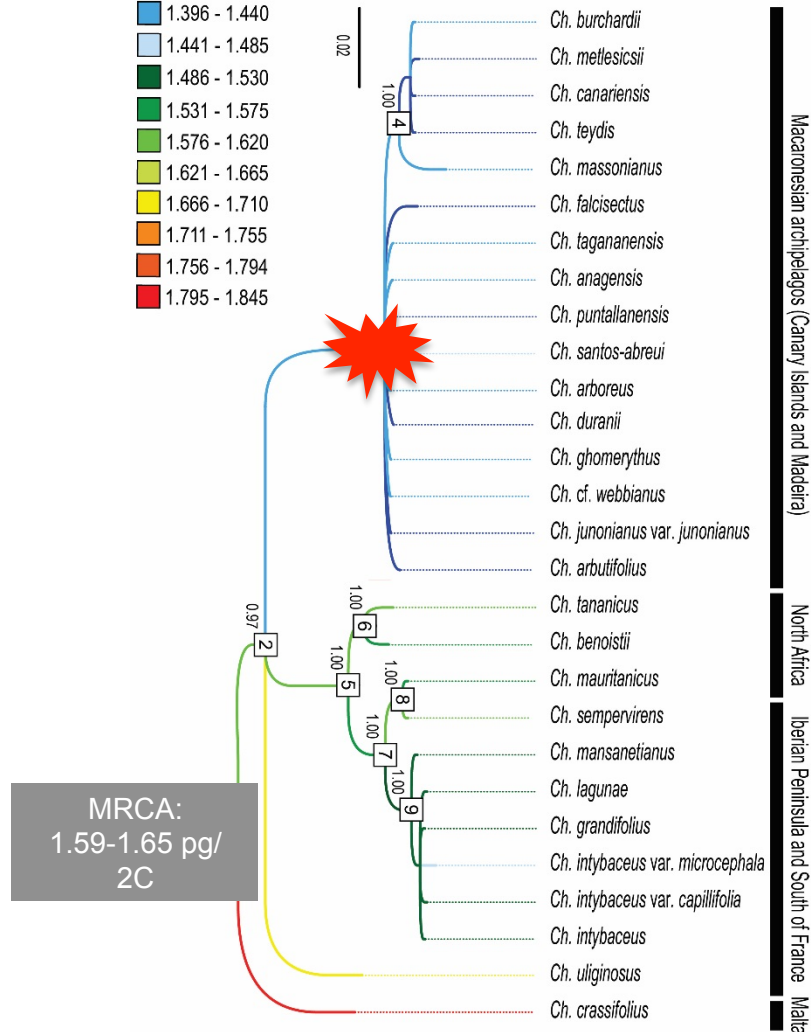
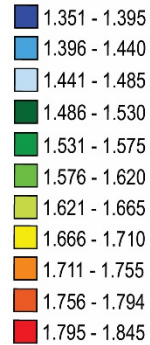


- Selective forces favour species with small genome: MRCA c.1.6pg/2C
- Most substantial genome downsizing coincident with the Macaronesian radiation



# Genome size evolution in *Cheirolophus*

2C-values (pg) indicated by branch colour:



- Selective forces favour species with small genome: MRCA c.1.6pg/2C
- Most substantial genome downsizing coincident with the Macaronesian radiation



GS as a trigger for radiation...

***Cheirolophus* Cass.:**  
**rDNA evolution**

# rDNA evolution in *Cheirolophus*

## Swarm of terminal 35S in *Cheirolophus* (Asteraceae, Centaureinae)

T. Garnatje, O. Hidalgo, D. Viales, J. Pellicer, J. Vallès, O. Robin, S. Garcia, and  
S. Siljak-Yakovlev

**Abstract:** Island radiation constitutes a playground for species diversification, which has long fascinated researchers and still does today. Because only a small subset of taxa within the pool of island colonizers is concerned by this process, the question is raised on whether some factors could make a taxon prone to radiate. *Cheirolophus* is the only genus of Centaureinae subtribe to have experienced a radiation in the Canary Islands. Cytogenetic characterization through FISH of 5S and 35S ribosomal RNA genes in eight *Cheirolophus* species from continent and Canary Islands revealed an unusually high number of 35S predominantly at terminal position, together with a single interstitial 5S rDNA locus in all the studied taxa. Such an abundance of 35S rDNA signals is unique among Centaureinae and predates *Cheirolophus* arrival in Canary Islands. The possible link of the rDNA profile with radiation process is discussed through a comparison with two other case studies, the closely related *Rhaponticum* group and the genus *Centaurea*.

Garnatje *et al.* 2012, 55: 529-235

# rDNA evolution in *Cheirolophus*

## Swarm of terminal 35S in *Cheirolophus* (Asteraceae, Centaureinae)

T. Garnatje, O. Hidalgo, D. Viales, J. Pellicer, J. Vallès, O. Robin, S. Garcia, and S. Siljak-Yakovlev

Abstract: Island radiation constitutes a playground for species diversification, which has long fascinated researchers and still does today. Because only a small subset of taxa within the pool of island colonizers is concerned by this process, the question is raised on whether some factors could make a taxon prone to radiate. *Cheirolophus* is the only genus of Centaureinae subtribe to have experienced a radiation in the Canary Islands. Cytogenetic characterization through FISH of 5S and 35S ribosomal RNA genes in eight *Cheirolophus* species from continent and Canary Islands revealed an unusually high number of 35S predominantly at terminal position, together with a single interstitial 5S rDNA locus in all the studied taxa. Such an abundance of 35S rDNA signals is unique among Centaureinae and predates *Cheirolophus* arrival in Canary Islands. The possible link of the rDNA profile with radiation process is discussed through a comparison with two other case studies, the closely related *Rhaponticum* group and the genus *Centaurea*.

Garnatje *et al.* 2012, 55: 529-235

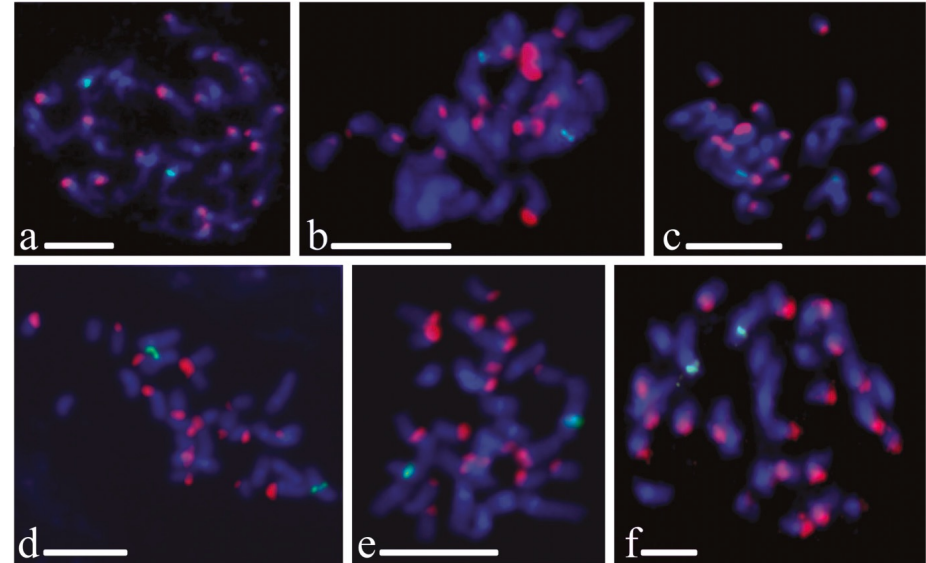
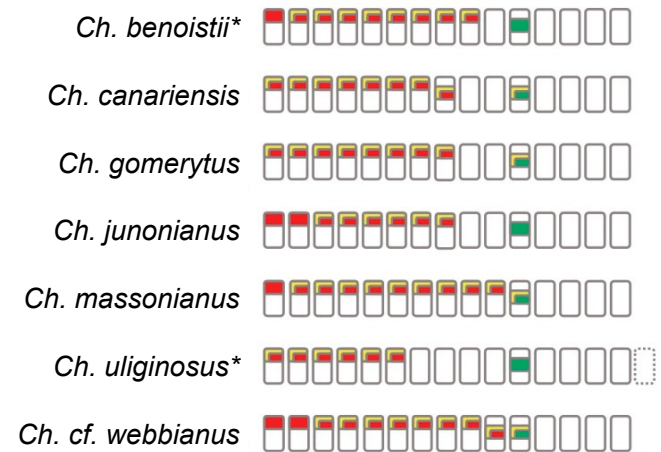


Table 2. Number of chromosomes ( $2n$ ), genome size (2C value), number of chromocytin A<sub>3</sub>-positive bands (CMA), and 35S and 5S rDNA sites for the species studied.

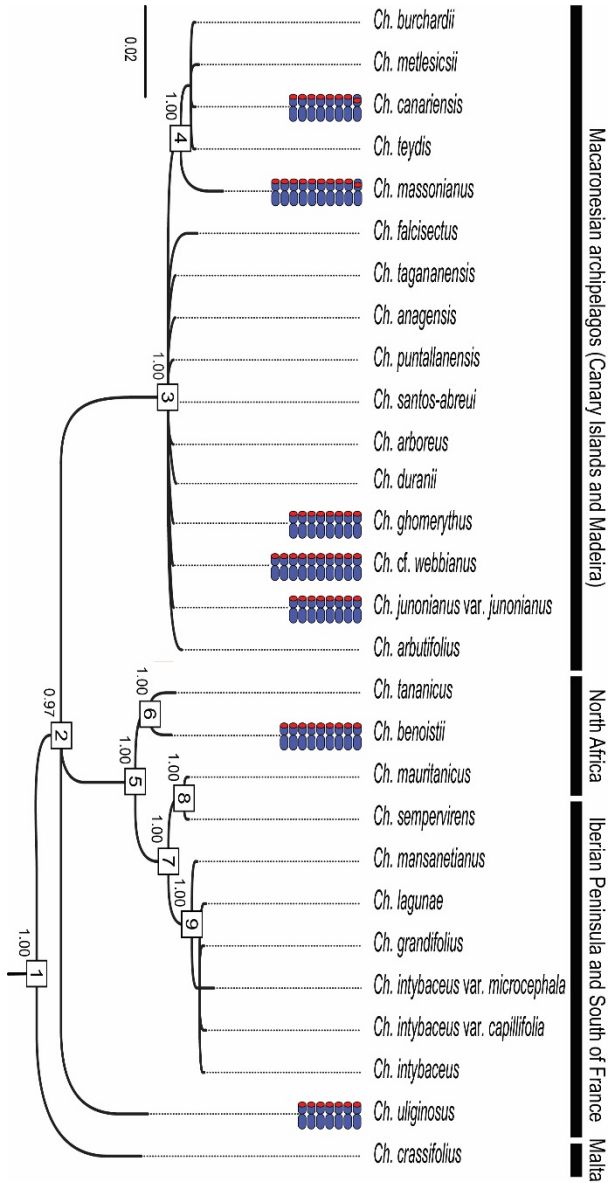
Species	$2n$	2C (pg)*	CMA	35S sites	5S sites
<i>Ch. benoistii</i>	30	1.55	16	18	2 (2i)
<i>Ch. burchardii</i>	30	1.42	16	—	—
<i>Ch. canariensis</i>	30	1.38	18 (4i)	16 (2i)	2 (2i)
<i>Ch. gomerythus</i>	30	1.41	18 (2i)	16	2 (2i)
<i>Ch. junonianus</i>	—	1.37	12	16	2 (2i)
<i>Ch. massonianus</i>	30	1.44	20 (2i)	20	2 (2i)
<i>Ch. uliginosus</i>	~32	1.69	12	12	2 (2i)
<i>Ch. cf. webbiana</i>	30	1.38	18 (4i)	20 (2i)	2 (2i)

Note: Indication of positive signals with interstitial position (i) is provided.

\*Garnatje *et al.* (2007).



# rDNA evolution in *Cheirolophus*

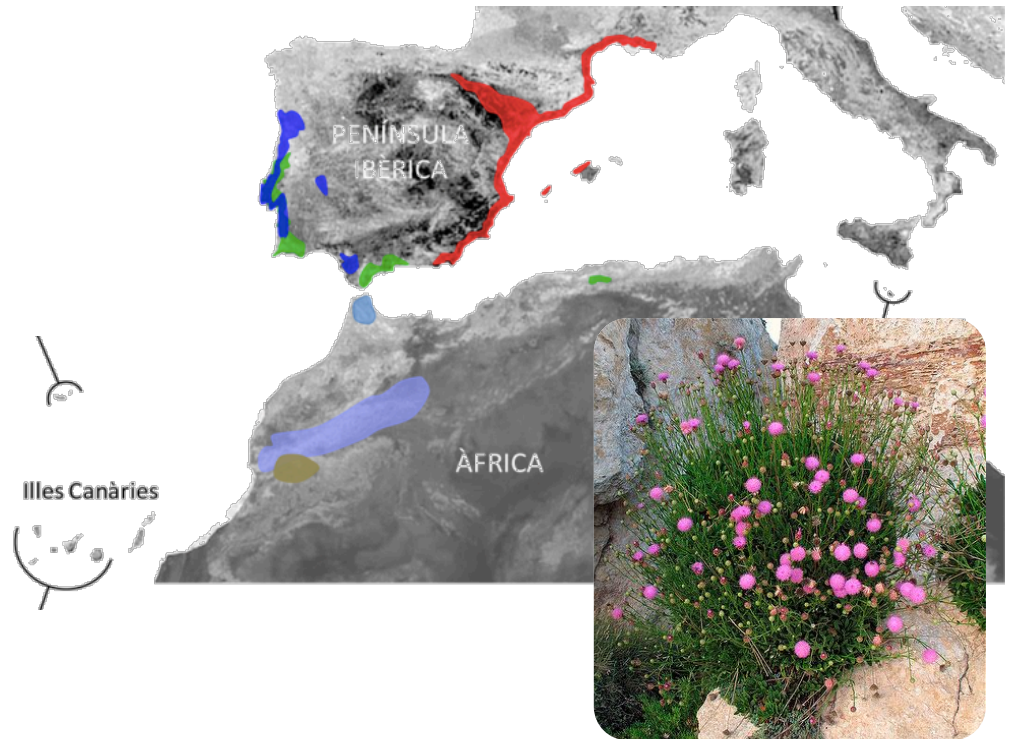


Macaronesian archipelagos (Canary Islands and Madeira)

North Africa

Iberian Peninsula and South of France

Malta

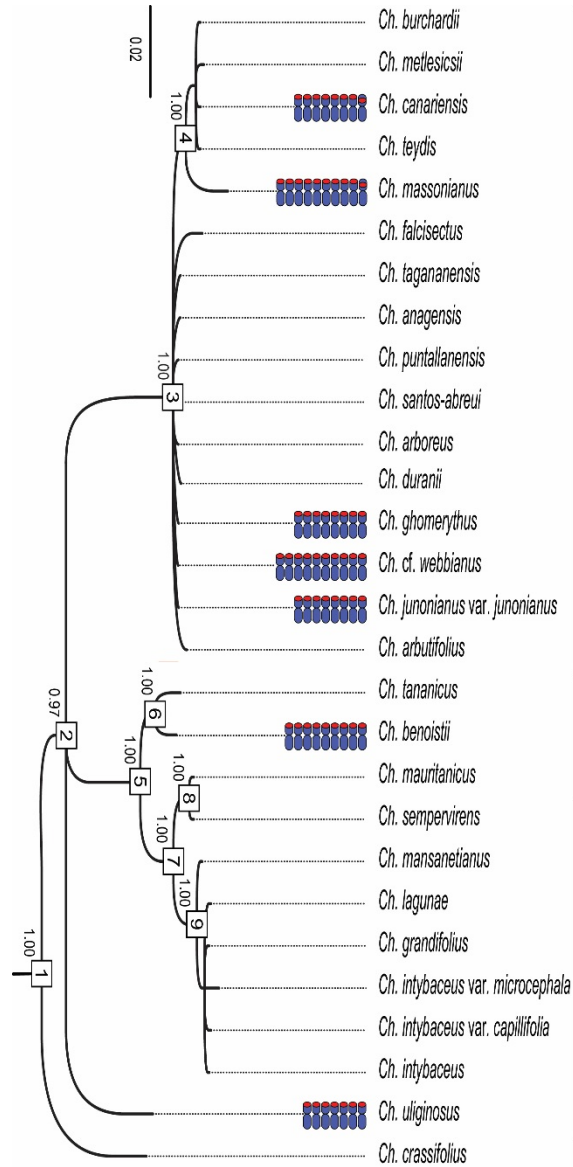




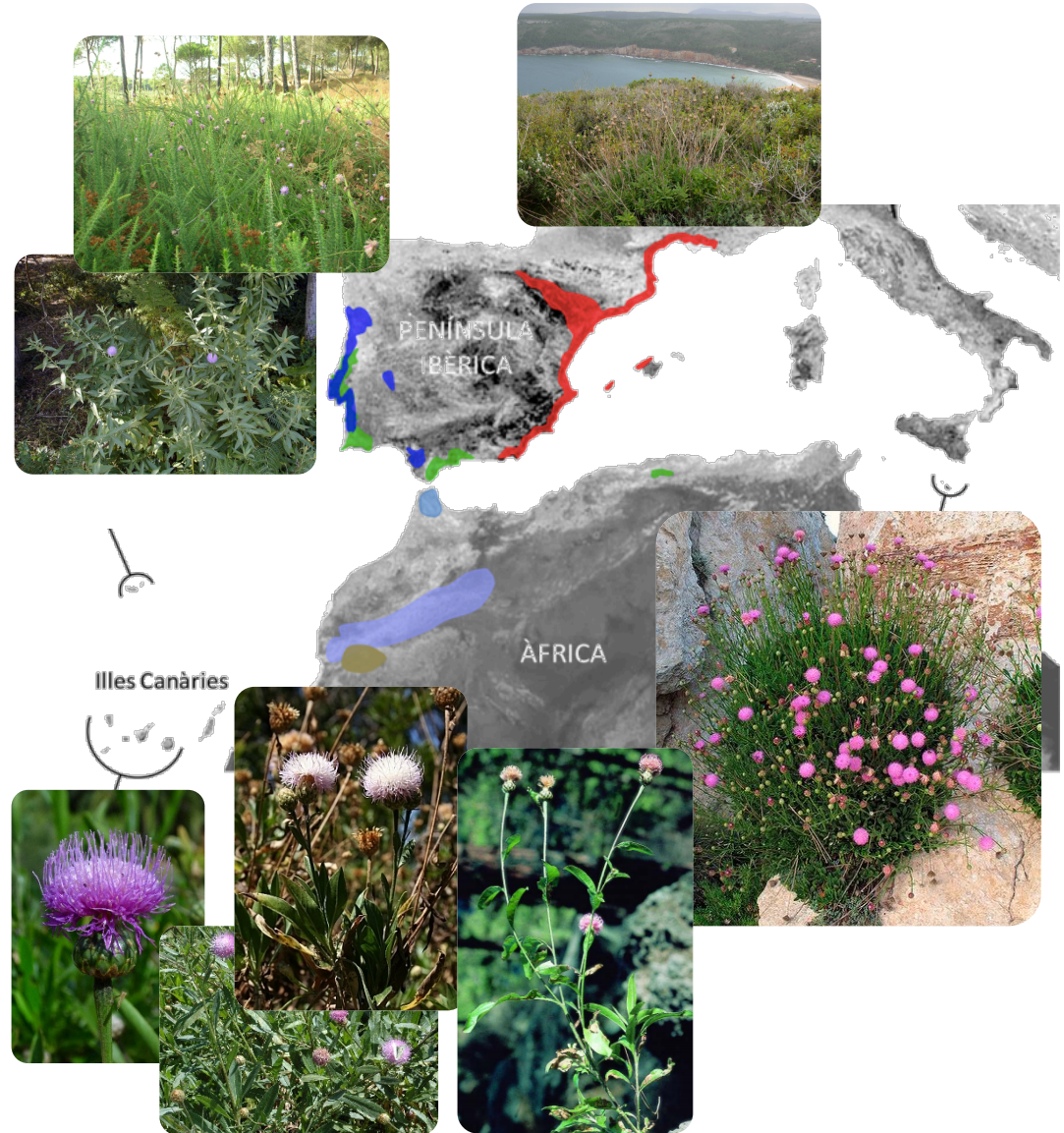
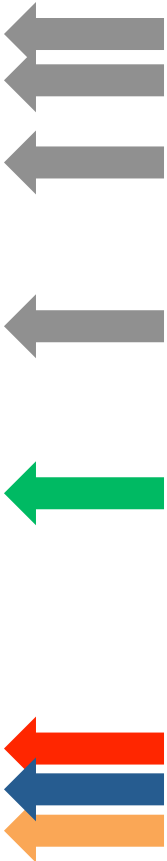




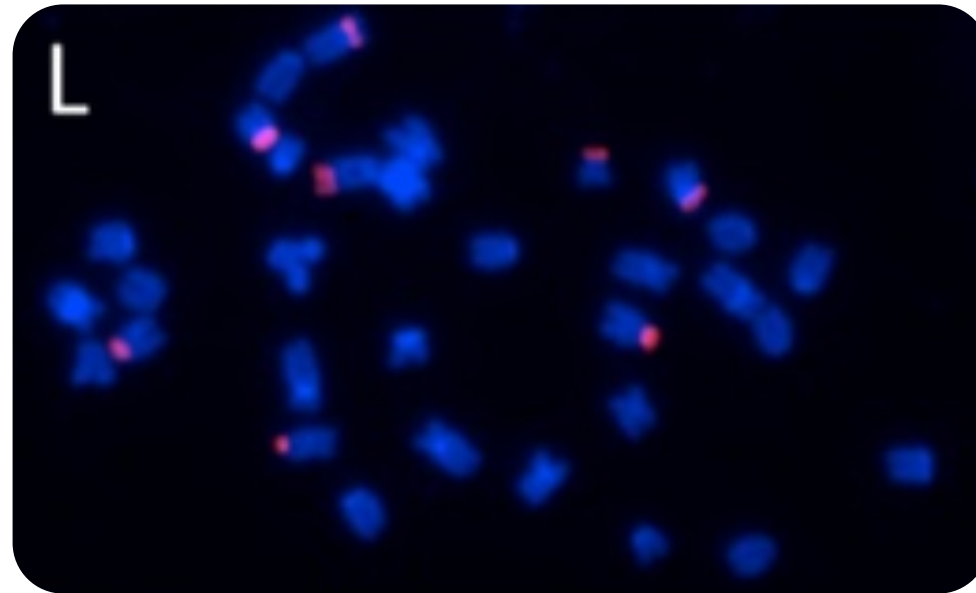
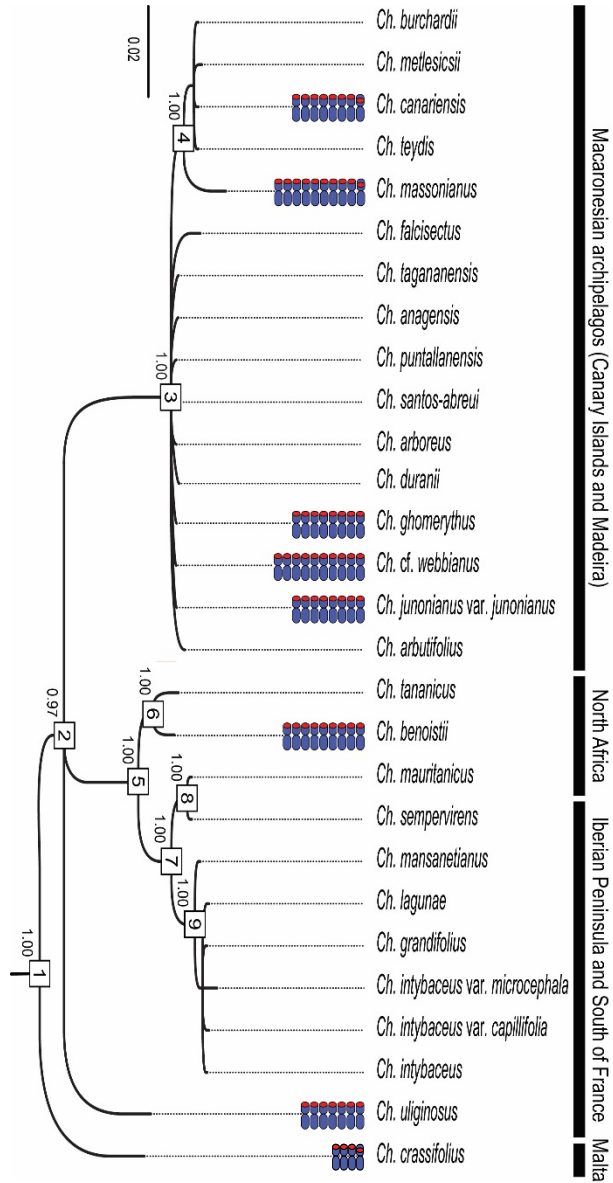
# rDNA evolution in *Cheirolophus*



Macaronesian archipelagos (Canary Islands and Madeira) | North Africa | Iberian Peninsula and South of France | Malta



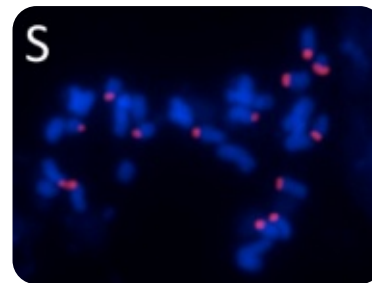
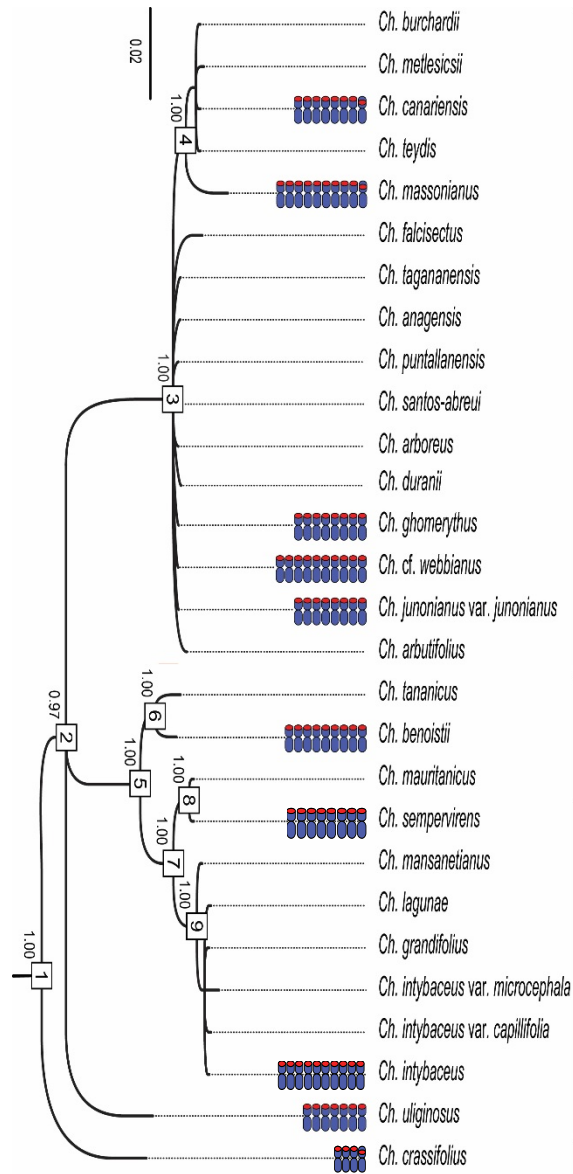
# rDNA evolution in *Cheirolophus*



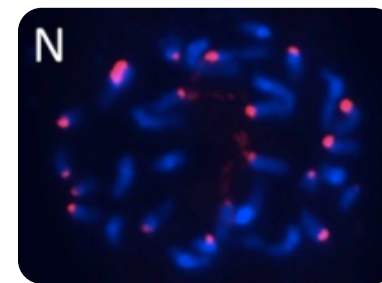
*Ch. crassifolius* (8 sites)



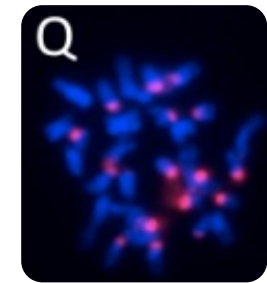
# rDNA evolution in *Cheirolophus*



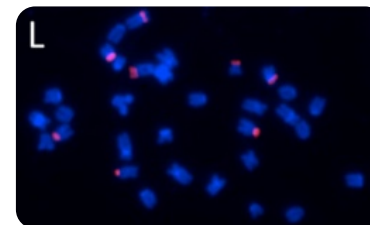
*Ch. uliginosus* (12-14 sites)



*Ch. intybaceus* (20 sites)



*Ch. sempervirens* (16 sites)



*Ch. crassifolius* (8 sites)

Macaronesian archipelagos (Canary Islands and Madeira)

North Africa

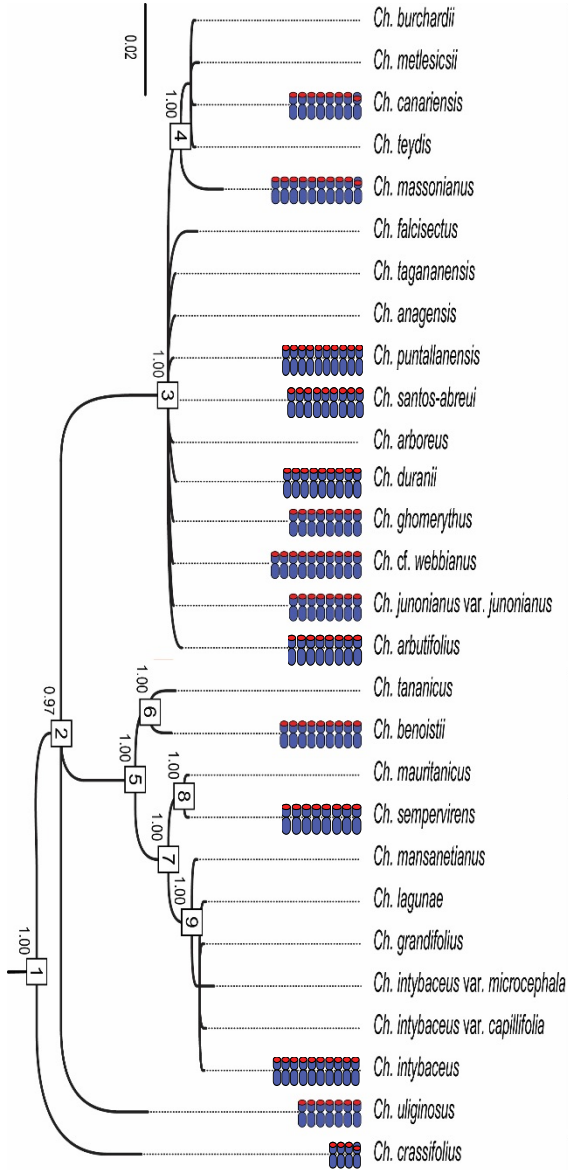
Iberian Peninsula and South of France

Malta

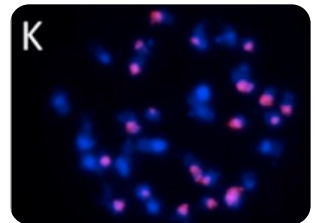




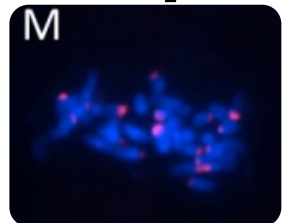
# rDNA evolution in *Cheirolophus*



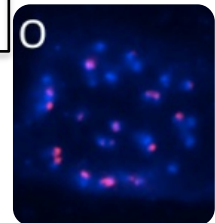
Macaronesian archipelagos (Canary Islands and Madeira)  
 North Africa  
 Iberian Peninsula and South of France  
 Malta



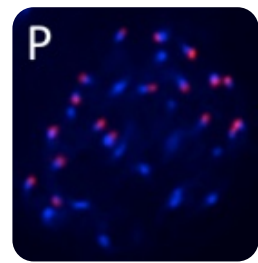
*Ch. arbutifolius* (20 sites)



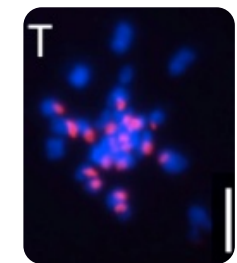
*Ch. duranii* (18 sites)



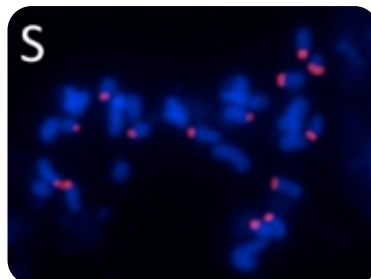
*Ch. puntallanensis* (20 sites)



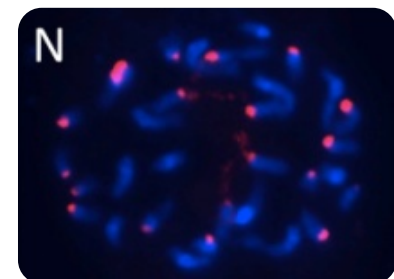
*Ch. santos-abreui* (18 sites)



*Ch. cf. webbianus* (20 sites)



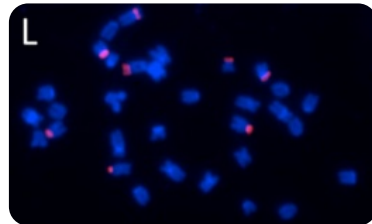
*Ch. uliginosus* (12-14 sites)



*Ch. intybaceus* (20 sites)



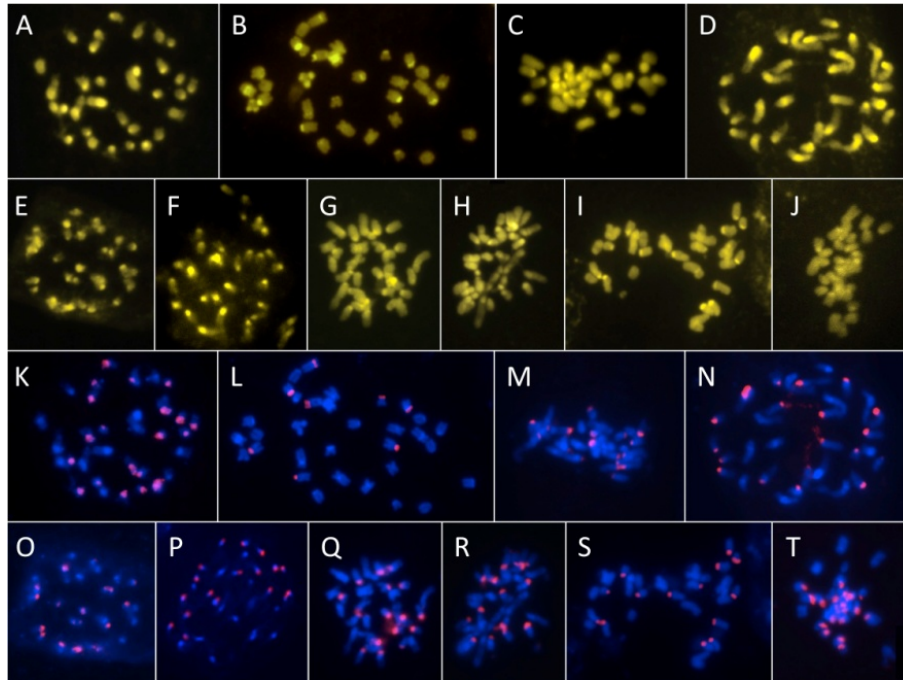
*Ch. sempervirens* (16 sites)



*Ch. crassifolius* (8 sites)

# rDNA evolution in *Cheirolophus*

## rDNA loci and GC-rich DNA sequences



- Surprisingly high number of CMA+ and 35S signals, particularly compared to closely related genera.
- 35S loci mainly located on terminal positions.
- *Ch. crassifolius* shows the lowest number of loci, highly similar to other closely related genera.

Taxon	Distribution	CMA	35S
1. <i>Ch. anagaensis</i> A.Santos	Ca(T)	-	-
2. <i>Ch. arboreus</i> (Sch. Bip.) Holub	Ca(P)	-	-
3. <i>Ch. arbutifolius</i> (Svent.) G.Kunkel	Ca(C)	-	20
4. <i>Ch. benoistii</i> (Humbert) Holub	Ma	16	18
5. <i>Ch. burchardii</i> A.Susanna	Ca(T)	16	-
6. <i>Ch. canariensis</i> (Willd.) Holub	Ca(T)	18(4i)	16(2i)
7. <i>Ch. crassifolius</i> (Bertol.) Susanna	Si(M)	-	8
8. <i>Ch. dariasii</i> (Svent.) Bramwell	Ca(G)	-	-
9. <i>Ch. duranii</i> (Burchard) Holub	Ca(H)	-	18
10. <i>Ch. falcisectus</i> Montelongo & Moraleda	Ca(C)	-	-
11. <i>Ch. ghomerythus</i> (Svent.) Holub	Ca(G)	18(2i)	16
• <i>Ch. ghomerythus</i> var. <i>integrifolius</i> (Svent.) Holub		-	-
12. <i>Ch. grandifolius</i> (Font Quer) Stübing & al.	Bl(I, M)		
13. <i>Ch. intybaceus</i> (Lam.) Dostál	Ga(F), Hs(S)		20
• <i>Ch. intybaceus</i> var. <i>capillifolius</i> (Sandwith) J.R. Nebot & al.	Hs(S)		-
• <i>Ch. intybaceus</i> var. <i>microcephala</i> Rouy	Ga(F)		-
14. <i>Ch. junonianus</i> (Svent.) Holub	Ca(P)	12	16
• <i>Ch. junonianus</i> subsp. <i>junonianus</i> <sup>1</sup>	Ca(P)	12	16
• <i>Ch. junonianus</i> subsp. <i>isoplexiphyllus</i> <sup>1</sup>		-	-
15. <i>Ch. lagunae</i> A.Olivares & al.	Hs(S)	-	-
16. <i>Ch. massonianus</i> (Lowe) A.Hansen & Sunding	Md(M, P)	20(2i)	20
17. <i>Ch. mauritanicus</i> (Font Quer) Susanna	Ag, Ma	-	-
18. <i>Ch. metlesicsii</i> Montelongo	Ca(T)	-	-
19. <i>Ch. puntallanensis</i> A.Santos	Ca(P)	-	20
20. <i>Ch. santos-abreui</i> A.Santos	Ca(P)	-	18
21. <i>Ch. satarataensis</i> (Svent.) Holub	Ca(G)	-	-
22. <i>Ch. sempervirens</i> (L.) Pomel	Hs(S), Lu	-	16
23. <i>Ch. sventenii</i> (A.Santos) G.Kunkel	Ca(P)	-	-
• <i>Ch. sventenii</i> subsp. <i>gracilis</i> A.Santos	Ca(P)	-	-
24. <i>Ch. tagananensis</i> (Svent.) Holub	Ca(T)	-	-
25. <i>Ch. tananicus</i> (Maire) Holub	Ma	-	-
26. <i>Ch. teydis</i> (Buch) G.López [= <i>Ch. argutus</i> (Nees) Holub]	Ca(P,T)	-	-
27. <i>Ch. uliginosus</i> (Brot.) Dostál	Hs(S), Lu	12	12-14
28. <i>Ch. webbianus</i> (Sch. Bip.) Holub	Ca(T)	-	-
<u>Putative new species of <i>Ch. webbianus</i> complex</u>			
<i>Ch. cf. webbianus</i> [	Ca(T)	18(4i)	20(2i)
<i>Ch. cf. sp. nova</i>	Ca(T)	-	-

# [ rDNA evolution in *Cheirolophus* ]

**Mechanisms involved:**



# [ rDNA evolution in *Cheirolophus* ]

## Mechanisms involved:

- Polyploidy

# [ rDNA evolution in *Cheirolophus* ]

## Mechanisms involved:

- Polyploidy
- Locus duplication via illegitimate recombination

# [ rDNA evolution in *Cheirolophus* ]

## Mechanisms involved:

- Polyploidy
- Locus duplication via illegitimate recombination
- Amplification of orphaned rDNA loci (transposon-mediated insertions)

# [ rDNA evolution in *Cheirolophus* ]

## Mechanisms involved:

- Polyploidy
- Locus duplication via illegitimate recombination
- Amplification of orphaned rDNA loci (transposon-mediated insertions)
- Chromosome translocations

# [ rDNA evolution in *Cheirolophus* ]

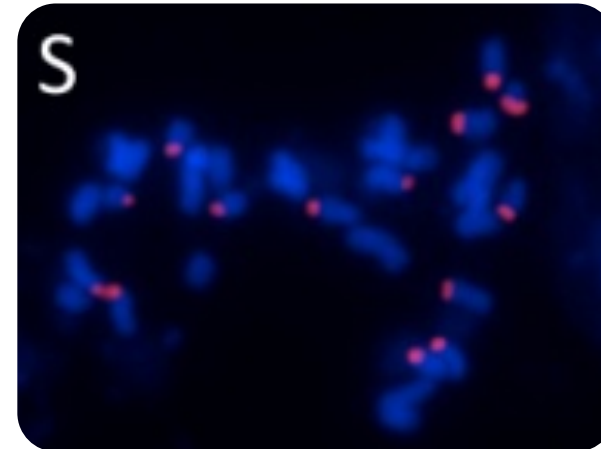
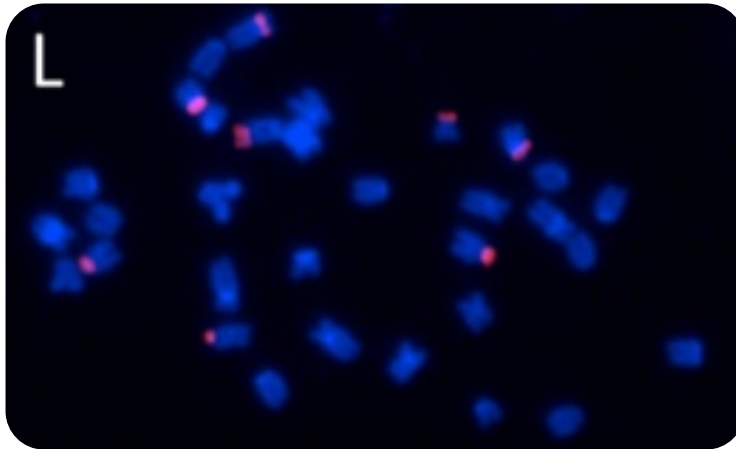
## Mechanisms involved:

- Locus duplication via illegitimate recombination

# [ rDNA evolution in *Cheirolophus* ]

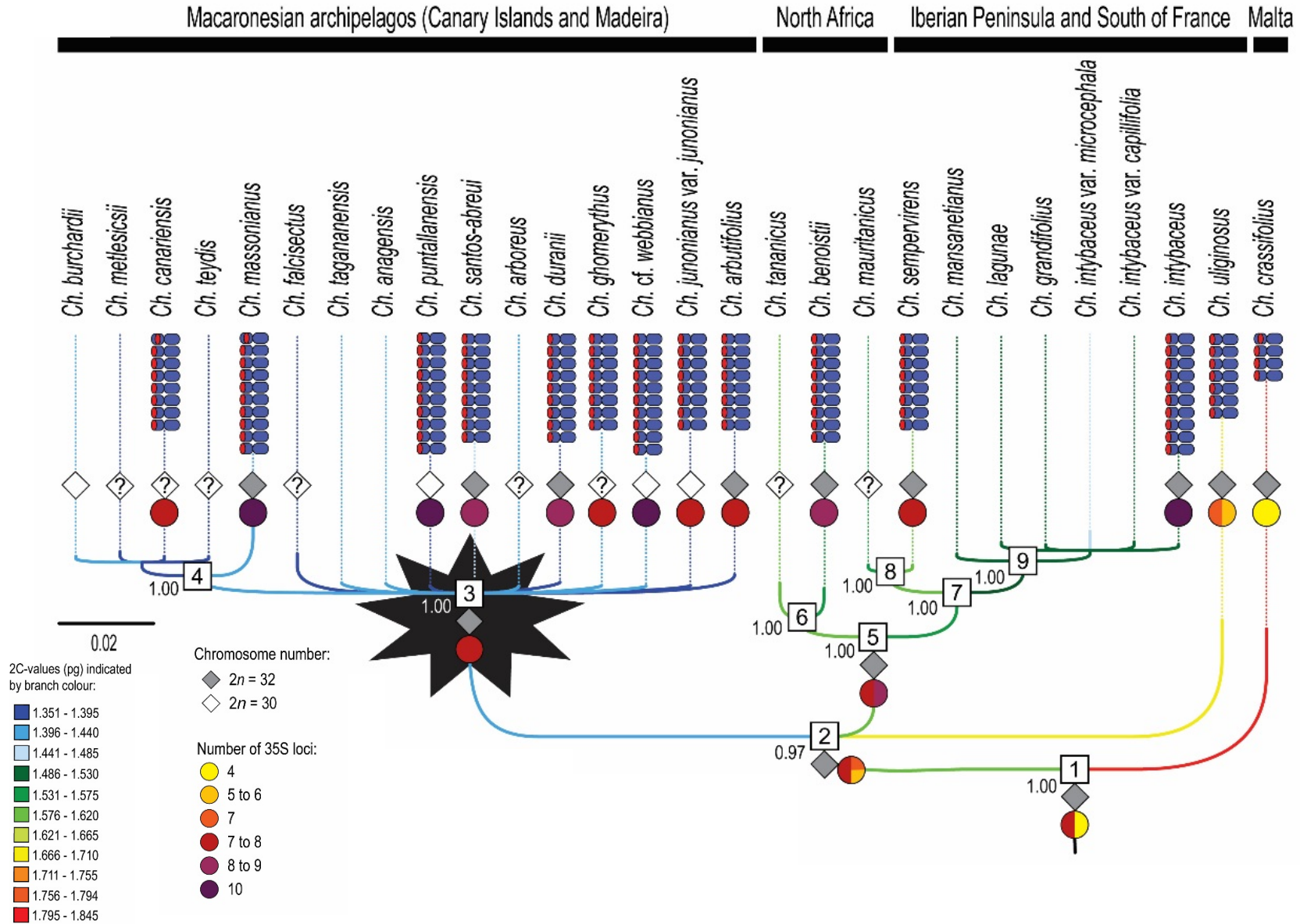
## Mechanisms involved:

- Locus duplication via illegitimate recombination
  - Preserved loci position at T/St-position
  - Genome downsizing
  - rDNA is highly conserved: heterologous recombination

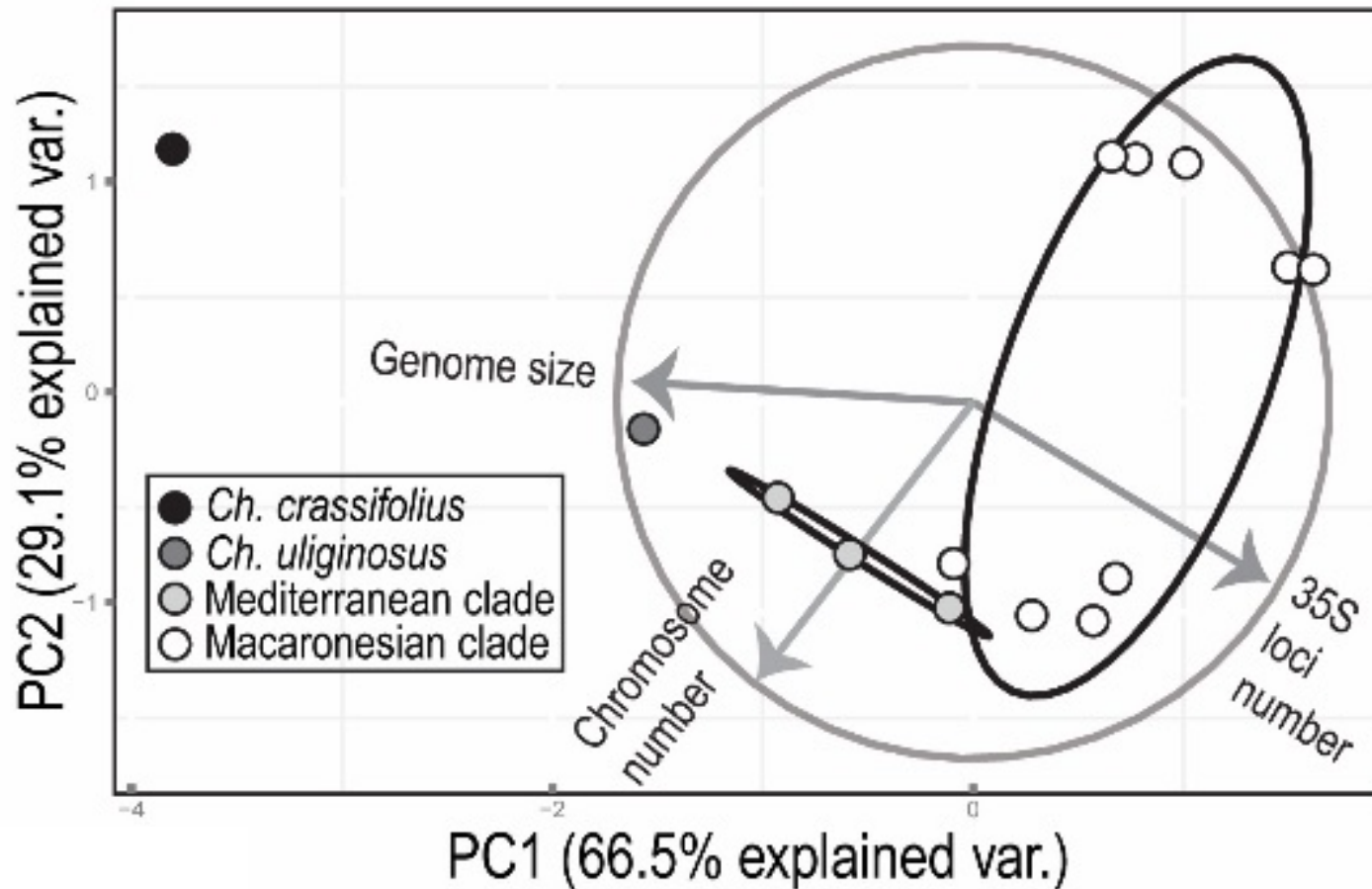




# rDNA evolution in *Cheirolophus*

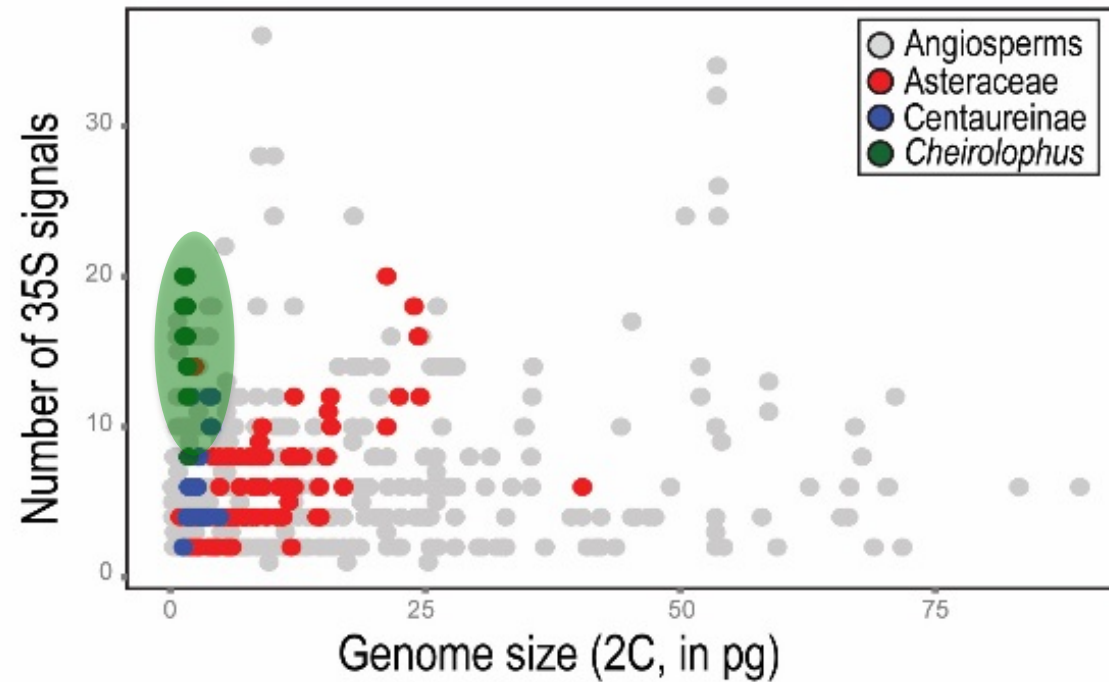


# rDNA evolution in *Cheirolophus*



# rDNA evolution in *Cheirolophus*

Marginal genomic landscape for *Cheirolophus*: distinctive cytogenetic traits



**[ In summary... ]**

## [ In summary... ]

- Originated in Malta, diversified westwards along the Mediterranean basin and Macaronesia.

## [ In summary... ]

- Originated in Malta, diversified westwards along the Mediterranean basin and Macaronesia.
- The Macaronesian diversification started around 1.74 Ma, followed by an explosive event of radiation during the late Pleistocene and particularly at the Holocene (0.5 Ma).



## [ In summary... ]

- Originated in Malta, diversified westwards along the Mediterranean basin and Macaronesia.
- The Macaronesian diversification started around 1.74 Ma, followed by an explosive event of radiation during the late Pleistocene and particularly at the Holocene (0.5 Ma).
- The distinctiveness of *Cheirolophus* relies on a relative chromosomal stasis, which contrasts with the dynamics of GS and rDNA evolution seen.

## [ In summary... ]

- Originated in Malta, diversified westwards along the Mediterranean basin and Macaronesia.
- The Macaronesian diversification started around 1.74 Ma, followed by an explosive event of radiation during the late Pleistocene and particularly at the Holocene (0.5 Ma).
- The distinctiveness of *Cheirolophus* relies on a relative chromosomal stasis, which contrasts with the dynamics of GS and rDNA evolution seen.
- The Macaronesian radiation is characterised by an enhancement of pre-existing traits since early in the diversification of the genus...



# Acknowledgements...

- Dr. Ilia J. Leitch (Royal Botanic Gardens, Kew)
- Miquel Veny (Botanical Institute of Barcelona)
- Dr. Francesco M. Raimondo (Palermo Botanical Garden)

Royal Botanic Gardens  
**Kew**



**CSIC**  
CONSEJO SUPERIOR DE INVESTIGACIONES CIENTÍFICAS



**institut  
botànic**  
de Barcelona





**[ Thank you! ]**

**QUESTIONS?**