



# *Kindia* (Pavetteae, Rubiaceae), a new cliff-dwelling genus with chemically profiled colleter exudate from Mt Gangan, Republic of Guinea

Martin Cheek<sup>1</sup>, Sékou Magassouba<sup>2</sup>, Melanie-Jayne R. Howes<sup>3</sup>, Tokpa Doré<sup>2</sup>, Saïdou Doumbouya<sup>4</sup>, Denise Molmou<sup>2</sup>, Aurélie Grall<sup>1</sup>, Charlotte Couch<sup>1</sup> and Isabel Larridon<sup>1,5</sup>

<sup>1</sup> Identification and Naming, Royal Botanic Gardens Kew, Richmond, Surrey, United Kingdom

<sup>2</sup> Herbar National de Guinée, Université de Gamal Abdel Nasser de Conakry, Conakry, République de Guinée

<sup>3</sup> Natural Capital and Plant Health, Royal Botanic Gardens Kew, Richmond, Surrey, United Kingdom

<sup>4</sup> Centre d'Observation de Surveillance et d'Informations Environnementales, Ministère de l'Environnement et des Eaux et Forêts, Conakry, Guinea-Conakry

<sup>5</sup> Department of Biology, Research Group Spermatophytes, Ghent University, Ghent, Belgium

## ABSTRACT

A new genus *Kindia* (Pavetteae, Rubiaceae) is described with a single species, *Kindia gangan*, based on collections made in 2016 during botanical exploration of Mt Gangan, Kindia, Republic of Guinea in West Africa. The Mt Gangan area is known for its many endemic species including the only native non-neotropical Bromeliaceae *Pitcairnia feliciana*. *Kindia* is the fourth endemic vascular plant genus to be described from Guinea. Based on chloroplast sequence data, the genus is part of Clade II of tribe Pavetteae. In this clade, it is sister to *Leptactina sensu lato* (including *Coleactina* and *Dictyandra*). *K. gangan* is distinguished from *Leptactina s.l.* by the combination of the following characters: its epilithic habit; several-flowered axillary inflorescences; distinct calyx tube as long as the lobes; a infundibular-campanulate corolla tube with narrow proximal section widening abruptly to the broad distal section; presence of a dense hair band near base of the corolla tube; anthers and style deeply included, reaching about mid-height of the corolla tube; anthers lacking connective appendages and with sub-basal insertion; pollen type 1; pollen presenter (style head) winged and glabrous (smooth and usually hairy in *Leptactina*); orange colleters producing a vivid red exudate, which encircle the hypanthium, and occur inside the calyx and stipules. *Kindia* is a subshrub that appears restricted to bare, vertical rock faces of sandstone. Fruit dispersal and pollination by bats is postulated. Here, it is assessed as Endangered EN D1 using the 2012 IUCN standard. High resolution LC-MS/MS analysis revealed over 40 triterpenoid compounds in the colleter exudate, including those assigned to the cycloartane class. Triterpenoids are of interest for their diverse chemical structures, varied biological activities, and potential therapeutic value.

Submitted 2 December 2017

Accepted 4 April 2018

Published 20 April 2018

Corresponding author

Isabel Larridon, i.larridon@kew.org

Academic editor

Renate Scheibe

Additional Information and  
Declarations can be found on  
page 24

DOI 10.7717/peerj.4666

© Copyright  
2018 Cheek et al.

Distributed under  
Creative Commons CC-BY 4.0

OPEN ACCESS

**Subjects** Biodiversity, Conservation Biology, Plant Science, Taxonomy

**Keywords** Cliff-dwelling, Conservation, Guinea-conakry, Epilithic, Tropical Important Plant Areas, Rubiaceae

## INTRODUCTION

Plant conservation priorities are often poorly represented in national and global frameworks due to a lack of publicly available biodiversity data to inform conservation decision-making (Corlett, 2016; Darbyshire et al., 2017), despite the fact that one in five plant species are estimated to be threatened with extinction mainly due to human activities (Brummitt et al., 2015; Bachman et al., 2016). West Africa represents a priority target area for future efforts in botanical exploration to inform conservation action and biological resource use (Sosef et al., 2017).

### Botanical exploration and new species discovery in Guinea

Guinea has numerous endemic species and a high diversity of species in the context of West Tropical African countries (c. 3,000 species; Lisowski, 2009), including several endemic genera, i.e., *Fleurydora* A.Chev. (Ochnaceae), *Feliciadamia* Bullock (Melastomataceae), *Cailliella* Jacq.-Fél. (Melastomataceae). Botanical exploration, discovery and publication of new species appeared to have nearly stopped after Independence in 1958, with the exception of the work carried out by S Lisowski (1924–2002). His work resulted in the publication of several new species, e.g., *Pseudoprosopis bampsiana* Lisowski, *Mikaniopsis camarae* Lisowski and *Bacopa lisowskiana* Mielcarek, and the posthumously published ‘Flore de la République de Guinée’ (Lisowski, 2009). The other species new to science that were published in the period 1960–2010 were based on specimens collected in the French Colonial period, e.g., *Phyllanthus felicis* Brunel (1987) and *Clerodendrum sylvae* Adam (1974). In recent years, this has begun to change as botanical exploration, often associated with environmental impact assessments for more environmentally responsible mining companies such as Rio Tinto (Harvey et al., 2010; Magassouba et al., 2014), has restarted. *Xysmalobium samoritourei* Goyder (2009), *Gymnosiphon samoritoureanus* Cheek & Van der Burgt (2010), *Eriosema triformum* Van der Burgt et al. (2012), *Brachystephanus oreacanthus* Champluvier & Darbyshire (2009), *Striga magnibracteata* Fischer, Darbyshire & Cheek (2011), *Isoglossa dispersa* Darbyshire, Pearce & Banks (2012), *Eriocaulon cryptocephalum* Phillips & Mesterházy (2015), *Napoleonea alata* Prance & Jongkind (2015) and *Psychotria samoritourei* Cheek & Williams (2016) are examples of recent new discoveries from Guinea resulting from this impetus. Just across the border in Mali, *Calophyllum africanum* Cheek & Luke (2016) was recently found, and in Ivory Coast *Macropodiella cussetiana* Cheek & Ameka (2016). Even a new rheophytic genus, *Karima* Cheek & Riina has come to light in Guinea (Cheek et al., 2016). Many of the new species being described are narrow endemics and are threatened by habitat clearance for subsistence agriculture, open-cast mining, urban expansion, quarrying (Couch et al., 2014) and invasive species (Cheek et al., 2013).

### Mt Gangan: a Tropical Important Plant Areas

The criteria of the Important Plant Areas (IPAs) programme, developed by *Plantlife International* (2004), offers a pragmatic yet scientifically rigorous means of delivering biodiversity datasets, enabling informed site-based conservation priorities (Darbyshire et al., 2017). IPAs are aligned to Target 5 of the Convention on Biological Diversity (CBD)’s ‘Global Strategy for Plant Conservation’ and so offer an important step toward fulfilling

national CBD targets (*Darbyshire et al., 2017*). IPAs are identified on the basis of three criteria: the presence of threatened species, exceptional botanical richness and threatened habitats (*Anderson, 2002; Plantlife International, 2004*). These criteria were recently revised for a global approach (*Darbyshire et al., 2017*), and are used in the Tropical Important Plant Areas programme of the Royal Botanic Gardens, Kew. In Guinea, botanical exploration is used to aid in aligning the existing forest reserve network, which focuses on maintaining timber resources for exploitation, and the existing few National Parks protecting large mammals or wetlands, to cover global priority areas for plant conservation.

The Mt Gangan area was identified as a prospective Tropical Important Plant Area (*Larridon & Couch, 2016; Herbar National de Guinée, 2017; Darbyshire, continuously updated*). Mt Gangan is an outlier of the Fouta Djallon Highlands of Guinea, and is an area of sandstone table mountains with sheer cliffs, frequent rock ledges, overhangs and caves. The rock formations create a variety of microhabitats and are inhabited by sparse small trees, shrubs, subshrubs and perennial herbs, many of which are rock specialists, such as *Fegimanra afzelii* Engl. *Fleurydora felicis* A.Chev., *Clerodendrum sylvae*, *Phyllanthus felicis*, *Cyanotis ganganensis* R.Schnell, *Dissotis pygmaea* A.Chev. & Jacq.-Fél., *Dissotis humilis* A.Chev. & Jacq.-Fél. and *Melastomastrum theifolium* (G.Don) A.Fern. & R.Fern var. *controversum* (A.Chev. & Jacq.-Fél.) Jacq.-Fél. (formerly *Dissotis controversa* (A.Chev. & Jacq.-Fél.) Jacq.-Fél.). Except for *Fegimanra afzelii*, the abovementioned species are all either endemic or near-endemic to the Mt Gangan complex of precipitous sandstone table mountains. Mt Gangan is also home to *Pitcairnia feliciana* (A. Chev) Harms & Mildbr., the only non-neotropical Bromeliaceae (*Porembski & Barthlott, 1999*).

### A new Rubiaceae from Mt Gangan

In February 2016, a survey was initiated of the vegetation types, plant species, and threats at Mt Gangan. During the survey an unusual Rubiaceae was observed with more or less sessile leaf rosettes (*Cheek 18345*), growing only on vertical faces of bare sandstone cliffs that form the flanks of parts of some of the sandstone table mountains that comprise Mt Gangan (*Fig. 1*). *Cheek 18345* has fruits (*Fig. 1*) and only old, dried flowers. Because the old flowers were mistakenly interpreted as likely to have had valvate corolla aestivation, and because the inflorescences were axillary, with two-celled, fleshy fruits, containing numerous seeds, the species was initially placed in tribe Mussaendeae sensu *Hepper & Keay (1963: 104)*, using the key to the tribes of Rubiaceae in the *Flora of West Tropical Africa*. Within this tribe, it keyed out as *Sabicea* Aubl. However, it matched no known species of that genus, being bizarre in several features, such as the epilithic habit, the red colleter exudate, and the seeds with a central excavation. Checks with all other genera of Rubiaceae in West Tropical Africa, and indeed tropical Africa, also produced no matches, leading to the hypothesis that this taxon represented a new genus to science. In June and September 2016, additional specimens (*Cheek 18541A* and *Cheek 18602*) of the taxon were obtained during the flowering season, at which time the corolla aestivation was found to be contorted to the left (*Fig. 1*), excluding it from *Sabicea* but consistent with Pavetteae (*De Block et al., 2015*), as was first indicated by the results of the molecular study (see below). However, the axillary inflorescences are unusual in that tribe (*De Block et al., 2015*). In this study, morphological

and chloroplast sequence data are employed to test the hypothesis that the new Rubiaceae from Mt Gangan is: (1) part of tribe Pavetteae, and (2) represents a new genus to science. To achieve this, we aim to investigate the overall morphology and the pollen morphology and compare them to those found in other tribe Pavetteae genera, and place the taxon in a molecular phylogenetic framework of the tribe. Ecology and conservation status of the new Rubiaceae are also investigated, as is the colleter exudate biochemistry because of its unusual red colour.

## MATERIALS AND METHODS

### Ethics statement

The specimens studied were collected as a part of field surveys for the ‘Important Plant Areas in the Republic of Guinea’ project funded by a Darwin Initiative grant of the Department of the Environment, Food and Rural Affairs (DEFRA) of the government of the United Kingdom. Permits to export these specimens were issued by the Ministère de l’Environnement et des Eaux et Forêts of the Republic of Guinea, Certificat d’Origine no 0000344 (date 21 June 2016) and no 0000399 (dated 28 October 2016). Specimens were collected under the terms of a Memorandum of Understanding between the Board of Trustees, RBG, Kew and the Herbarium National de Guinée, Université Gamal Abdel Nasser de Conakry, renewed and extended for 5 years in December 2015. The study area at Mt Gangan reported in this paper is controlled by the government of the Republic of Guinea and is not privately owned, nor protected. The taxon studied here is not yet a protected species.

### Taxonomy

The electronic version of this article in Portable Document Format (PDF) will represent a published work according to the International Code of Nomenclature for algae, fungi, and plants (ICN), and hence the new names contained in the electronic version are effectively published under that Code from the electronic edition alone. In addition, new names contained in this work which have been issued with identifiers by *IPNI* will eventually be made available to the Global Names Index. The IPNI LSIDs can be resolved and the associated information viewed through any standard web browser by appending the LSID contained in this publication to the prefix “<http://ipni.org/>”. The online version of this work is archived and available from the following digital repositories: PeerJ, PubMed Central, and CLOCKSS.

### Morphological study

Herbarium material was examined with a Leica Wild M8 dissecting binocular microscope fitted with an eyepiece graticule measuring in units of 0.025 mm at maximum magnification. The drawing was made with the same equipment with a Leica 308700 *camera lucida* attachment. For dissection, structures were first rehydrated by soaking in water with surfactant. The overall morphology was documented, described and illustrated following botanical standard procedures (*Davis & Heywood, 1963*). Information about habit, habitat, and distribution was taken from specimen labels and field observations.



**Figure 1** Photographs showing the cliff-dwelling habitat and the habit of *K. gangan* at Mt Gangan, Kindia, Guinea. (A) plants scattered on high sandstone cliff (Cheek 18345); (B) plant habit on cliff face (Cheek 18541A); (C) frontal view of flower (Cheek 18541A); (D) side view of inflorescence showing cupular bract (Cheek 18541A); (E) opened fruit showing ripe seeds (Cheek 18345). Photos taken by Martin Cheek.

Full-size  DOI: [10.7717/peerj.4666/fig-1](https://doi.org/10.7717/peerj.4666/fig-1)

Material of *Cheek 18345*, *Cheek 18529*, *Cheek 18541A* and *Cheek 18602*, the new Rubiaceae of Mt Gangan, was first compared morphologically against reference material of all Pavetteae genera held at K. The study was then extended to include the BM, HNG, P and WAG herbaria. Codes for cited herbaria follow Index Herbariorum

(*Thiers, continuously updated*). The main online search address used for retrieving specimen data from P (which globally has the largest holdings of herbarium specimens from the Republic of Guinea) was <https://science.mnhn.fr/institution/mnhn/collection/p/item/p00179355?listIndex=128&listCount=610>; that for WAG was <http://bioportal.naturalis.nl/geographic-search?language=en>. Special focus was given to taxa shown to be closely related by the molecular phylogenetic results. All specimens marked ‘!’ have been seen.

Pollen morphology has been shown to be useful in characterising clades, and sometimes genera within tribe Pavetteae (*De Block & Robbrecht, 1998*). Pollen samples were collected from *Cheek 18541A* (K). Whole, unacetolysed anthers were placed on a stub using double-sided tape and sputter-coated with platinum in a Quorum Q150T coater for 30 s and examined in a Hitachi 54700 scanning electron microscope at an acceleration voltage of 4 kV.

### Molecular methods

In this study, previously published chloroplast sequence data was used (*De Block et al., 2015*), supplemented with new sequences from selected regions (*rps16* and *trnT-F*) (*Appendix*). The DNA extraction protocol and material and methods for amplification and sequencing used in this study follow *De Block et al. (2015)*.

Sequences were assembled and edited in Geneious R8 (<http://www.geneious.com>; *Kearse et al., 2012*), aligned using MAFFT 7 (*Katoh, Asimenos & Toh, 2009*; *Katoh & Standley, 2013*); afterwards, alignments were checked manually in PhyDE 0.9971 (*Müller et al., 2010*). The alignments used to produce the phylogenies are available as [Data S1](#).

Based on *De Block et al. (2015)*, the alignments of the two chloroplast regions were concatenated for the downstream analyses, each marker was treated as a separate partition, and both partitions were analysed using the GTR + G model. Maximum likelihood (ML) analyses were performed using RAxML 8.2.10 (*Stamatakis, 2014*). The search for an optimal ML tree was combined with a rapid bootstrap analysis of 1,000 replicates. Bayesian Inference (BI) analyses were conducted in MrBayes 3.2.6 (*Ronquist et al., 2012*). Rate heterogeneity, base frequencies, and substitution rates across partitions were unlinked. The analysis was allowed to run for 100 million generations across 4 independent runs with four chains each, sampling every 10,000 generations. Convergence, associated likelihood values, effective sample size values and burn-in values of the different runs were verified with Tracer 1.5 (*Rambaut et al., 2014*). The first 25% of the trees from all runs were excluded as burn-in before making a majority-rule consensus of the 30,000 posterior distribution trees using the “sumt” function. All phylogenetic analyses were run using the CIPRES portal (<http://www.phylo.org/>; *Miller, Pfeiffer & Schwartz, 2010*). Trees were drawn using TreeGraph2 (*Stöver & Müller, 2010*) and FigTree 1.4.3 (*Rambaut, 2016*), and adapted in Adobe Photoshop CS5.

### Ecology and conservation status

Field studies were conducted in the Mt Gangan complex north of Kindia in February (fruiting season), June and September (flowering season) 2016, and in November 2017 (fruiting season). Plants of the new taxon were mostly inaccessible on vertical sandstone cliffs, so they were studied and counted with binoculars. Voucher specimens were made

in the usual way (*Bridson & Forman, 1998*) from the few accessible plants that could be reached from the base of the cliffs. The conservation assessment was prepared following *IUCN (2012)* with the help of *Bachman et al. (2011)*. The distribution of the species was mapped using SimpleMappr (*Shorthouse, 2010*).

### LC-MS/MS analysis of colleter exudate

A sample of *Cheek 18345* was prepared by extracting the colleter exudate fragments in EtOH:MeOH:H<sub>2</sub>O (5:4:1) (1 mg/ml) for 24 h, prior to centrifugation. The supernatant was then subjected to LC–MS/MS analysis. Analyses were performed on a Thermo Scientific system consisting of an ‘Accela’ U-HPLC unit with a photodiode array detector and an ‘LTQ Orbitrap XL’ mass spectrometer fitted with an electrospray source (Thermo Scientific, Waltham, MA, USA). Chromatography was performed with a 5 µl sample injection onto a 150 mm × 3 mm, 3 µm Luna C-18 column (Phenomenex, Torrance, CA, USA) using the following 400 µl/min mobile phase gradient of H<sub>2</sub>O/CH<sub>3</sub>CN/CH<sub>3</sub>CN +1% HCOOH: 90:0:10 (0 min), 0:90:10 (20 min), 0:90:10 (25 min), 90:0:10 (27 min), 90:0:10 (30 min). The ESI source was set to record high resolution (30 k resolution) MS1 spectra (*m/z* 125–2,000) in negative mode and data dependent MS2 and MS3 spectra using the linear ion trap. Detected compounds were assigned by comparison of accurate mass data (based on ppm), and by available MS/MS data, with reference to the published compound assignment system (*Schymanski et al., 2014*).

## RESULTS

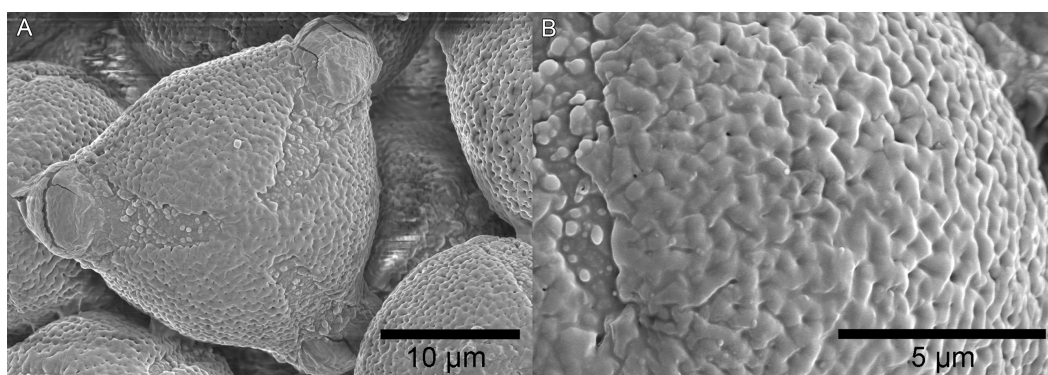
### Morphology

Characters separating the new Rubiaceae from Mt Gangan from its sister genus *Leptactina* are provided in [Table 1](#). A detailed description is given in the taxonomic treatment below.

The pollen grains ([Fig. 2](#)) are tricolporate, overall spheroidal, but usually triangular in polar view 20–25 µm in diameter, with an apocolpium of 3.5–4.5 µm diameter, giving an apocolpial index of 0.125. The mesocolpium sculpturing is microperforate- reticulate, the reticulum units are obscurely pentagonal, about 900–1,000 nm in diameter, the muri broad and rounded, the central perforations c. 0.1 µm. The apocolpium exine sculpturing grades to microporate. The colpi are about 4–6 µm wide at the equator, 2 µm wide at the poles. The colpal membrane is densely granular, the granular units 0.2–0.5 µm diameter, the margin with the mesocolpium well-defined but irregular, and the pores 3–5 µm in diameter.

### Molecular phylogeny

The concatenated ML and BI analyses did not significantly differ in topology, therefore the results discuss the relationships shown in the majority consensus multiple-locus BI tree with the associated posterior probability (PP) values and the bootstrap (BS) values of the multiple-locus ML tree ([Fig. S1](#)), and summarised in [Fig. 3](#). As the data used here is largely based on the dataset used by *De Block et al. (2015)*, the relationships recovered here largely match those published in that study. Within a well-supported tribe Pavetteae (BS = 100, PP = 1), four major clades (I–IV) were retrieved. However, although in *De Block et al. (2015)*



**Figure 2** Scanning electron micrographs of triangular pollen (unacetolysed) of *K. gangan*. (A) polar view; (B) surface sculpturing. From Cheek 18541A.

Full-size DOI: 10.7717/peerj.4666/fig-2

**Table 1** Characters separating *Kindia* from *Leptactina s.l.*, including *Coleactina* and *Dictyandra* (i.e., the remainder of Pavetteae Clade II according to De Block et al., 2015). Data for *Leptactina* morphology were taken from specimen measurements and from Hallé (1970) and Neuba, Malan & Kouadio (2014). Data for the pollen characters of *Leptactina* are based on De Block & Robbrecht (1998).

Characters	<i>Leptactina s.l.</i>	<i>Kindia</i>
Pollen: apocolpial index	0.39–0.68	0.125
Pollen aperture number	(3–)4	3
Anther attachment	Sub-apical or medifixed (except sub-basal in <i>L. arborescens</i> )	Sub-basal
Anther apical connective appendage	Present	Absent
Style arms at anthesis	Divergent (except <i>L. pynaertii</i> )	Appressed together
Corolla tube shape	Long narrow cylindrical sometimes widening subtly at the throat (where anthers are included)	Strongly infundibular-campanulate, short proximal narrow section abruptly widening to long, broad distal section
Presence of a dense, discrete band of hairs near base of corolla tube	Absent	Present
Pollen presenter	Smooth, usually hairy	Longitudinally winged, glabrous
Colleter exudate from apical bud	Usually not conspicuous; if conspicuous, translucent, colourless	Conspicuous, opaque, bright red

Clade I was retrieved as sister to a polytomy of Clades II–IV, in this study Clade I + III (BS = 90, PP = 0.99) and Clade II + IV (BS = 79, PP = 0.87) are supported as separate clades. Clade I (BS = 100, PP = 1) included the African genera *Nichallea* Bridson and *Rutidea* DC. Clade II (BS = 100, PP = 1) comprised the African genus *Leptactina* Hook.f. sensu De Block et al. (2015) and the new Rubiaceae from Mt Gangan, with the latter sister to *Leptactina* of which the monophyly is well supported (BS = 99, PP = 1). Clade III (BS = 87, PP = 0.87) consisted of the paleotropical genus *Pavetta* L., the monotypic East African genus *Cladoceras* Bremek. and the African species of *Tarenna* Gaertn. In our BI analysis, the species *Tarenna jolinonii* N.Hallé was recovered as sister to the rest of a weakly supported Clade III, as was found in the results of De Block et al. (2015). However, in the ML analysis, this species was weakly supported as sister to Clade I. Clade IV (BS = 92, PP = 1) included the East African monotypic genus *Tennantia* Verdc., Asian/Pacific and



Madagascan species of *Tarenna*, the Madagascan endemics *Homollea* Arènes, *Robbrechtia* De Block and *Schizenterospermum* Homolle ex Arènes and the Afro-Madagascan genera *Paracephaelis* Baill. and *Coptosperma* Hook.f. As in the results of *De Block et al. (2015)*, the nodes in this clade were poorly supported and the relationships between subclades remained unclear.

### LC-MS/MS analysis of colleter exudate

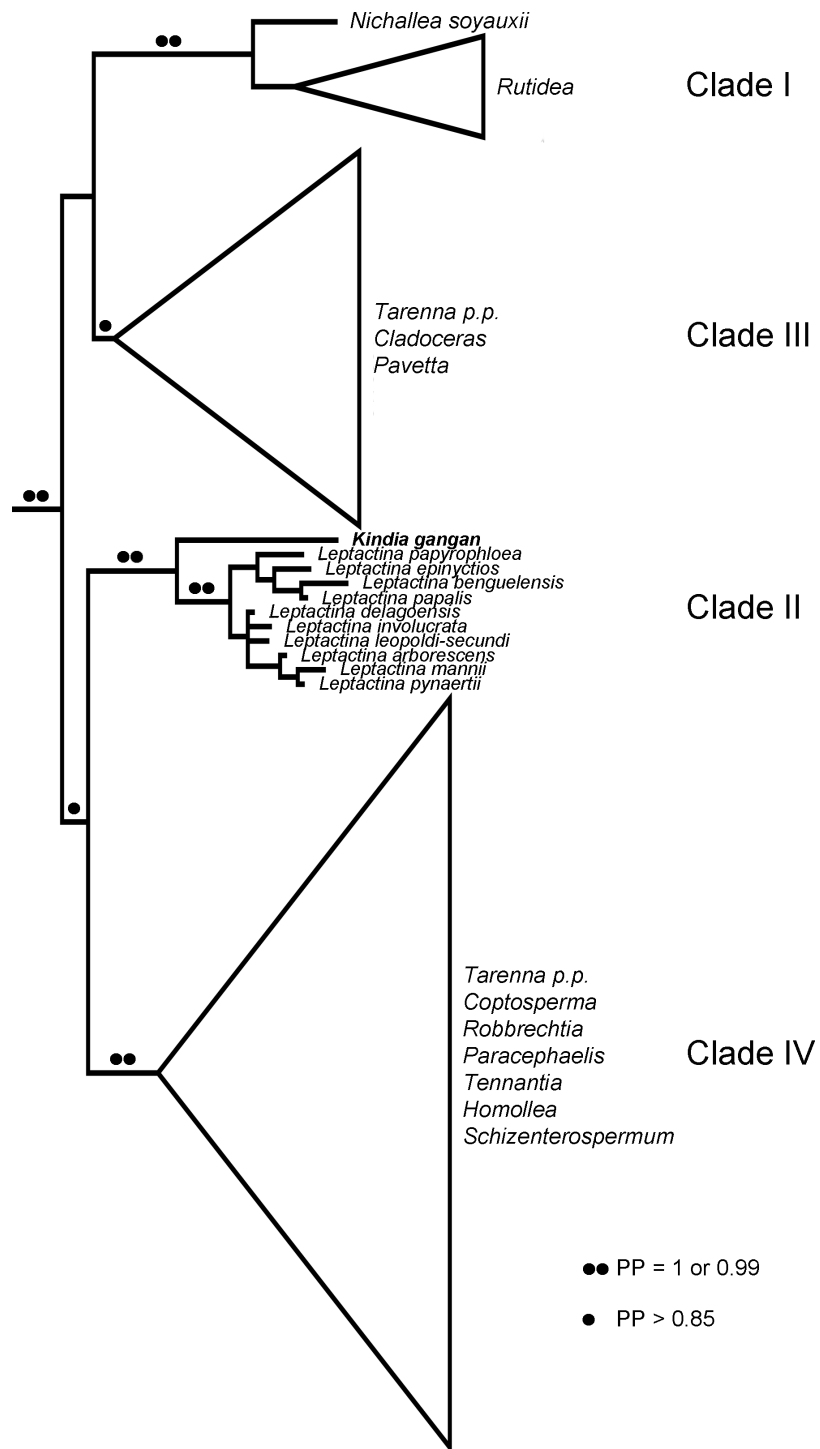
High resolution LC-MS/MS analysis revealed the detection of a range of triterpenoids in the exudate, including those assigned as the cycloartane class ([Table 2](#)). This included a compound eluting at the retention time (Rt) 14.3 min with  $m/z$  499.3068 that was assigned the molecular formula  $C_{30}H_{44}O_6$  from the observed  $[M-H]^-$  ion, which is that of dikamaliartane A, or isomer. Four compounds eluting at Rt 23.8, 25.3, 25.9 and 26.9 min were assigned the molecular formula  $C_{30}H_{46}O_4$ , from their observed  $[M-H]^-$  ions, which is that of dikamaliartane D, F, or isomer. The cycloartane triterpenoids, dikamaliartanes A, D and F, have previously been reported to occur in dikamali gum, which is the colleter exudate of *Gardenia gummifera* L.f. and *G. resinifera* Roth. (*Kunert et al., 2009*), in the Rubiaceae.

Also detected in the colleter exudate of *Cheek 18345* by LC-MS were two compounds eluting at Rt 20.8 and 21.8 min that were both assigned the molecular formula  $C_{30}H_{50}O_5$  from their observed  $[M-H]^-$  ions, which is that of gummiferartane 3, a cycloartane triterpenoid previously reported to occur in *G. gummifera* (*CCD, 2017*). Chemically related triterpenoids are gummiferartanes 4 and 9 that have the molecular formula  $C_{30}H_{48}O_4$  and also occur in *G. gummifera* (*CCD, 2017*); four compounds were assigned with this molecular formula in the colleter exudate, from their observed  $[M-H]^-$  ions, eluting at Rt 24.3, 24.9, 25.7 and 27.8 min. Other cycloartane triterpenoids have previously been reported to occur in species of *Gardenia* (*Kunert et al., 2009*; *CCD, 2017*), with some of these in agreement with the molecular formulae of the triterpenoids detected in the colleter exudate of *Cheek 18345*, as indicated in [Table 2](#).

Other compounds detected in the colleter exudate of *Cheek 18345* included those that eluted at Rt 20.9 min with  $m/z$  463.3281, and at Rt 21.6 min with  $m/z$  391.3069, that were assigned the molecular formulae  $C_{24}H_{48}O_8$  and  $C_{20}H_{42}O_4$ , respectively. These molecular formulae are those of 1,2,3,4-octadecanetetrol; 1-O-rhamnoside and 1,2,3,4-eicosanetetrol, respectively, which have been reported as components of the resin from *Commiphora* species in other studies, as indicated in [Table 2](#).

## DISCUSSION

Employing chloroplast sequence data of tribe Pavetteae, largely based on *De Block et al. (2015)*, placed the new Rubiaceae from Mt Gangan as sister to the rest of Clade II of that study, in which three genera, *Leptactina*, *Dictyandra* Hook.f. and *Coleactina* N.Hallé were traditionally maintained, although the two latter genera were recently subsumed into *Leptactina s.l.* Morphologically, the new Rubiaceae from Mt Gangan was consistent with these genera, especially *Leptactina s.s.* and *Coleactina*, yet showed significant character disjunctions, sufficient to support generic status. The new genus shares with the other



**Figure 3** Summary phylogenetic hypothesis based on the concatenated BI analysis. Clades I–IV were numbered according to *De Block et al. (2015)*.

Full-size  DOI: 10.7717/peerj.4666/fig-3

**Table 2** Compounds assigned from LC-MS/MS analysis (negative mode) of the colleter exudate from *Cheek 18345*.

Assigned compound <sup>#</sup> (or isomer)	Retention time (min)	Molecular formula	( <i>m/z</i> )	Ion	ppm <sup>#</sup>
Trihydroxy-oxocycloartanoic acid	12.3	C <sub>30</sub> H <sub>48</sub> O <sub>6</sub>	503.3385	[M-H] <sup>-</sup>	1.366
Pentahydroxy-(hydroxymethyl) cycloartanoic acid	12.4	C <sub>31</sub> H <sub>52</sub> O <sub>8</sub>	551.3596	[M-H] <sup>-</sup>	1.230
Epoxy-trihydroxy-cycloartanoic acid	12.9	C <sub>30</sub> H <sub>46</sub> O <sub>6</sub>	501.3228	[M-H] <sup>-</sup>	1.112
Epoxy-trihydroxy-cycloartanoic acid	13.0	C <sub>30</sub> H <sub>46</sub> O <sub>6</sub>	501.3225	[M-H] <sup>-</sup>	0.993
Epoxy-trihydroxy-cycloartanoic acid	13.2	C <sub>30</sub> H <sub>46</sub> O <sub>6</sub>	501.3231	[M-H] <sup>-</sup>	1.910
Epoxy-trihydroxy-cycloartanoic acid	13.3	C <sub>30</sub> H <sub>46</sub> O <sub>6</sub>	501.3229	[M-H] <sup>-</sup>	1.372
Trihydroxy-oxocycloartanoic acid	13.8	C <sub>30</sub> H <sub>48</sub> O <sub>6</sub>	503.3379	[M-H] <sup>-</sup>	0.154
Trihydroxy-oxocycloartanoic acid	14.0	C <sub>30</sub> H <sub>48</sub> O <sub>6</sub>	503.3380	[M-H] <sup>-</sup>	0.273
Dikamaliartane A <sup>a</sup>	14.3	C <sub>30</sub> H <sub>44</sub> O <sub>6</sub>	499.3068	[M-H] <sup>-</sup>	0.556
Trihydroxy-oxocycloartanoic acid	14.6	C <sub>30</sub> H <sub>48</sub> O <sub>6</sub>	503.3384	[M-H] <sup>-</sup>	1.247
1,3-Dihydroxy-23-oxocycloartan-28-oic acid (=carinatin A) <sup>b</sup> or 4,28-dihydroxy-26-oxo-3,4-secocycloart-24-en-3-oic acid (=gardenoin J) <sup>c</sup>	15.0	C <sub>30</sub> H <sub>48</sub> O <sub>5</sub>	487.3435	[M-H] <sup>-</sup>	1.195
1,3-Dihydroxy-23-oxocycloartan-28-oic acid (=carinatin A) <sup>b</sup> or 4,28-dihydroxy-26-oxo-3,4-secocycloart-24-en-3-oic acid (=gardenoin J) <sup>c</sup>	15.9	C <sub>30</sub> H <sub>48</sub> O <sub>5</sub>	487.3433	[M-H] <sup>-</sup>	0.743
1,3-Dihydroxy-23-oxocycloartan-28-oic acid (=carinatin A) <sup>b</sup> or 4,28-dihydroxy-26-oxo-3,4-secocycloart-24-en-3-oic acid (=gardenoin J) <sup>c</sup>	16.3	C <sub>30</sub> H <sub>48</sub> O <sub>5</sub>	487.3432	[M-H] <sup>-</sup>	0.559
1,3-Dihydroxy-23-oxocycloart-24-en-28-oic acid (=gardenolic acid B) <sup>d</sup>	16.5	C <sub>30</sub> H <sub>46</sub> O <sub>5</sub>	485.3274	[M-H] <sup>-</sup>	0.355
1,3-Dihydroxy-23-oxocycloartan-28-oic acid (=carinatin A) <sup>b</sup> or 4,28-dihydroxy-26-oxo-3,4-secocycloart-24-en-3-oic acid (=gardenoin J) <sup>c</sup>	16.6	C <sub>30</sub> H <sub>48</sub> O <sub>5</sub>	487.3432	[M-H] <sup>-</sup>	0.682
1,3-Dihydroxy-23-oxocycloart-24-en-28-oic acid (=gardenolic acid B) <sup>d</sup>	17.3	C <sub>30</sub> H <sub>46</sub> O <sub>5</sub>	485.3276	[M-H] <sup>-</sup>	0.746
1,3-Dihydroxy-23-oxocycloart-24-en-28-oic acid (=gardenolic acid B) <sup>d</sup>	17.5	C <sub>30</sub> H <sub>46</sub> O <sub>5</sub>	485.3272	[M-H] <sup>-</sup>	0.016
1,3-Dihydroxy-23-oxocycloart-24-en-28-oic acid (=gardenolic acid B) <sup>d</sup>	17.8	C <sub>30</sub> H <sub>46</sub> O <sub>5</sub>	485.3280	[M-H] <sup>-</sup>	1.550
Epoxy-trihydroxy-cycloartanoic acid	18.2	C <sub>30</sub> H <sub>46</sub> O <sub>6</sub>	501.3228	[M-H] <sup>-</sup>	1.292
1,3-Dihydroxy-23-oxocycloart-24-en-28-oic acid (=gardenolic acid B) <sup>d</sup>	19.4	C <sub>30</sub> H <sub>46</sub> O <sub>5</sub>	485.3279	[M-H] <sup>-</sup>	1.303
1,3-Dihydroxy-23-oxocycloartan-28-oic acid (=carinatin A) <sup>b</sup> or 4,28-dihydroxy-26-oxo-3,4-secocycloart-24-en-3-oic acid (=gardenoin J) <sup>c</sup>	19.5	C <sub>30</sub> H <sub>48</sub> O <sub>5</sub>	487.3432	[M-H] <sup>-</sup>	0.682
1,3-Dihydroxy-23-oxocycloart-24-en-28-oic acid (=gardenolic acid B) <sup>d</sup>	19.9	C <sub>30</sub> H <sub>46</sub> O <sub>5</sub>	485.3272	[M-H] <sup>-</sup>	0.016
1,3-Dihydroxy-23-oxocycloartan-28-oic acid (=carinatin A) <sup>b</sup> or 4,28-dihydroxy-26-oxo-3,4-secocycloart-24-en-3-oic acid (=gardenoin J) <sup>c</sup>	20.3	C <sub>30</sub> H <sub>48</sub> O <sub>5</sub>	487.3434	[M-H] <sup>-</sup>	0.928
Gummiferartane 3 <sup>c</sup>	20.8	C <sub>30</sub> H <sub>50</sub> O <sub>5</sub>	489.3549	[M-H] <sup>-</sup>	0.638
1,2,3,4-Octadecanetetrol; 1-O-rhamnoside <sup>f</sup>	20.9	C <sub>24</sub> H <sub>48</sub> O <sub>8</sub>	463.3281	[M-H] <sup>-</sup>	0.903

(continued on next page)

Table 2 (continued)

Assigned compound <sup>#</sup> (or isomer)	Retention time (min)	Molecular formula	( <i>m/z</i> )	Ion	ppm <sup>#</sup>
7-Hydroxy-3,4-secocycloarta-4(28),24-diene-3,26-dioic acid; 3-Me ester or 4-hydroxy-3,4-secocycloart-24-en-26,22-olid-3-oic acid; Me ester	21.0	C <sub>31</sub> H <sub>48</sub> O <sub>5</sub>	499.3435	[M-H] <sup>-</sup>	1.166
23,26-Epoxy-6,28-dihydroxy-3,4-secocycloarta-4(29),23,25-trien-3-oic acid <sup>g</sup>	21.2	C <sub>30</sub> H <sub>44</sub> O <sub>5</sub>	483.3124	[M-H] <sup>-</sup>	1.619
1,2,3,4-Eicosanetetrol <sup>h</sup>	21.6	C <sub>20</sub> H <sub>42</sub> O <sub>4</sub>	391.3069	[M + HCOO] <sup>-</sup>	0.863
Gummiferartane 3 <sup>c</sup>	21.8	C <sub>30</sub> H <sub>50</sub> O <sub>5</sub>	489.3590	[M-H] <sup>-</sup>	0.883
1,3-Dihydroxy-23-oxocycloartan-28-oic acid (=carinatin A) <sup>b</sup> or 4,28-dihydroxy-26-oxo-3,4-secocycloart-24-en-3-oic acid (=gardenoin J) <sup>c</sup>	22.0	C <sub>30</sub> H <sub>48</sub> O <sub>5</sub>	487.3433	[M-H] <sup>-</sup>	0.805
1,2,3,4-Octadecanetetrol; 1- <i>O</i> -rhamnoside <sup>f</sup>	22.4	C <sub>24</sub> H <sub>48</sub> O <sub>8</sub>	463.3283	[M-H] <sup>-</sup>	1.378
1,2,3,4-Octadecanetetrol; 1- <i>O</i> -rhamnoside <sup>f</sup>	22.5	C <sub>24</sub> H <sub>48</sub> O <sub>8</sub>	463.3283	[M-H] <sup>-</sup>	1.443
1,3-Dihydroxy-23-oxocycloartan-28-oic acid (=carinatin A) <sup>b</sup> or 4,28-dihydroxy-26-oxo-3,4-secocycloart-24-en-3-oic acid (=gardenoin J) <sup>c</sup>	22.8	C <sub>30</sub> H <sub>48</sub> O <sub>5</sub>	487.3435	[M-H] <sup>-</sup>	1.318
Dihydroxy-methoxycycloartenoic acid or diepoxy-methoxycycloartane-diol	23.0	C <sub>31</sub> H <sub>50</sub> O <sub>5</sub>	501.3589	[M-H] <sup>-</sup>	0.682
1,3-Dihydroxy-23-oxocycloart-24-en-28-oic acid (=gardenolic acid B) <sup>d</sup>	23.6	C <sub>30</sub> H <sub>46</sub> O <sub>5</sub>	485.3278	[M-H] <sup>-</sup>	1.179
Dikamaliartane D <sup>a</sup> or F <sup>a</sup>	23.8	C <sub>30</sub> H <sub>46</sub> O <sub>4</sub>	469.2968	[M-H] <sup>-</sup>	1.314
Gummiferartane 4 <sup>c</sup> or 9 <sup>c</sup>	24.3	C <sub>30</sub> H <sub>48</sub> O <sub>4</sub>	471.3483	[M-H] <sup>-</sup>	0.736
1,3-Dihydroxy-23-oxocycloart-24-en-28-oic acid (=gardenolic acid B) <sup>d</sup>	24.5	C <sub>30</sub> H <sub>46</sub> O <sub>5</sub>	485.3283	[M-H] <sup>-</sup>	2.251
Gummiferartane 4 <sup>c</sup> or 9 <sup>c</sup>	24.9	C <sub>30</sub> H <sub>48</sub> O <sub>4</sub>	471.3483	[M-H] <sup>-</sup>	0.608
Dikamaliartane D <sup>a</sup> or F <sup>a</sup>	25.3	C <sub>30</sub> H <sub>46</sub> O <sub>4</sub>	469.3328	[M-H] <sup>-</sup>	0.973
Gummiferartane 4 <sup>c</sup> or 9 <sup>c</sup>	25.7	C <sub>30</sub> H <sub>48</sub> O <sub>4</sub>	471.3489	[M-H] <sup>-</sup>	1.966
Dikamaliartane D <sup>a</sup> or F <sup>a</sup>	25.9	C <sub>30</sub> H <sub>46</sub> O <sub>4</sub>	939.67328	[2M-H] <sup>-</sup>	1.423
6,25-Dihydroxy-29-nor-3,4-secocycloarta-4(28),23-dien-3-oic acid; 25-Me ether, Me ester <sup>i</sup> or dihydroxy-methylenecycloartanoic acid	26.4	C <sub>31</sub> H <sub>50</sub> O <sub>4</sub>	485.3647	[M-H] <sup>-</sup>	2.177
Dikamaliartane D <sup>a</sup> or F <sup>a</sup>	26.9	C <sub>30</sub> H <sub>46</sub> O <sub>4</sub>	469.3331	[M-H] <sup>-</sup>	1.634
Gummiferartane 4 <sup>c</sup> or 9 <sup>c</sup>	27.8	C <sub>30</sub> H <sub>48</sub> O <sub>4</sub>	483.3482	[M-H] <sup>-</sup>	0.407

**Notes.**

All compounds assigned by comparison of accurate mass data (based on ppm<sup>#</sup>), and by interpretation of available MS/MS spectra.

<sup>a</sup>Reported to occur in *Gardenia gummifera* L.f. and *G. lucida* Roxb. (Kunert et al., 2009); the latter a synonym for *G. resinifera* Roth.

<sup>b</sup>Occurs in *Gardenia carinata* Wall. ex Roxb. (CCD, 2017).

<sup>c</sup>Occurs in *Gardenia thailandica* Tirveng. (CCD, 2017).

<sup>d</sup>Occurs in *Gardenia jasminoides* J.Ellis (CCD, 2017).

<sup>e</sup>Occurs in *Gardenia gummifera* (CCD, 2017).

<sup>f</sup>Constituent of the resin of *Commiphora opobalsamum* (L.) Engl. (CCD, 2017); synonym for *Commiphora gileadensis* (L.) C.Chr.

<sup>g</sup>Occurs in *Gardenia obtusifolia* Roxb. ex Hook.f. (CCD, 2017).

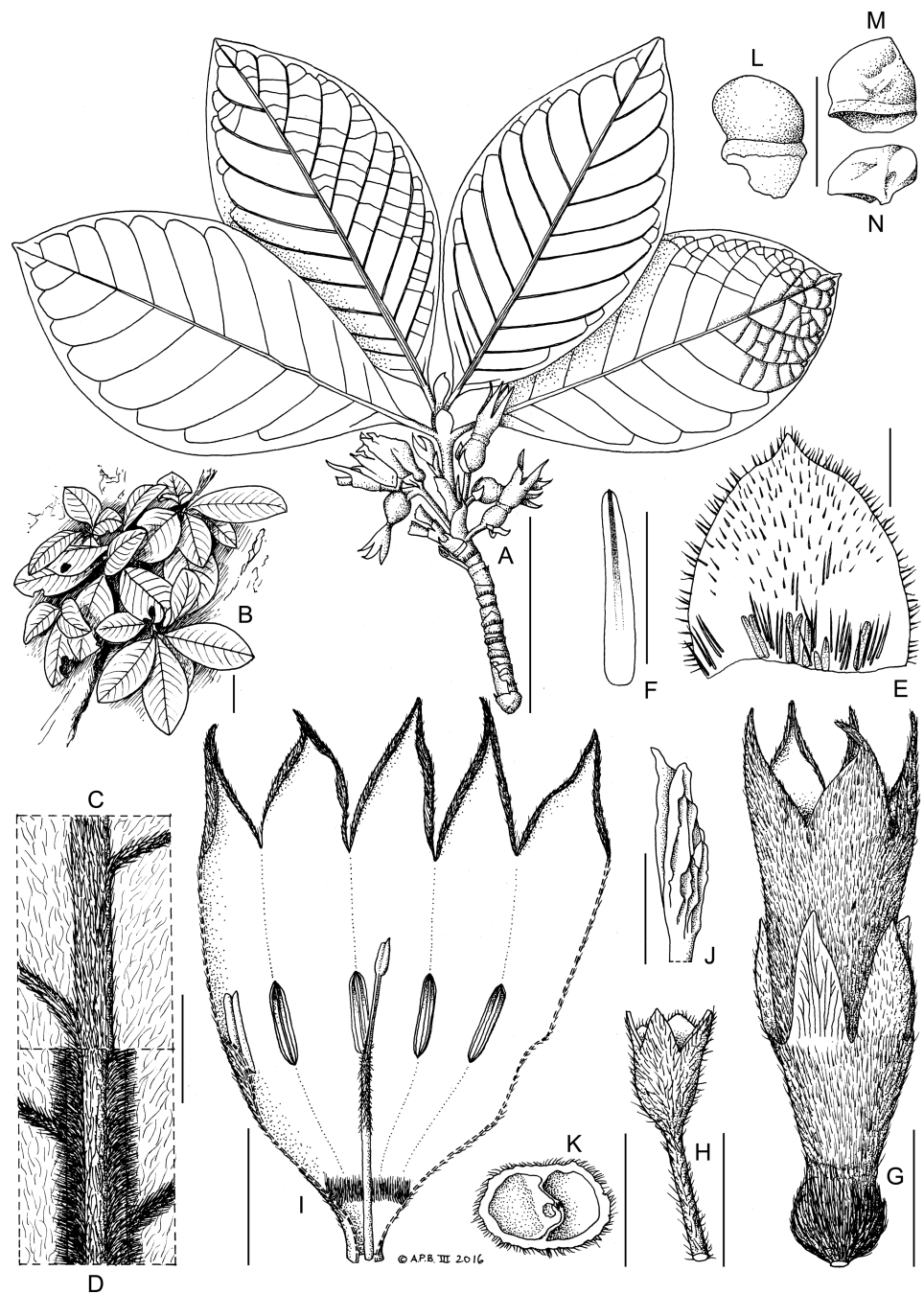
<sup>h</sup>D-xylo-form (guggultetrol 20) occurs in *Commiphora mukul* (Hook. ex Stocks) Engl. resin (CCD, 2017).

<sup>i</sup>Occurs in *Antirhea acutata* (DC.) Urb. (CCD, 2017); synonym for *Stenostomum acutatum* DC.

members of Clade II large broad stipules and large calyx lobes, large flowers with pubescent corollas, intrusive placentas with numerous ovules and numerous small, angular seeds. However, morphological differences are marked (Table 1), notably the winged, glabrous pollen presenter (versus smooth and usually hairy in *Leptactina s.l.*), the absence of staminal connective appendages, the difference in ratio of calyx tube:lobe (calyx tube well-developed and conspicuous in the new taxon, versus absent or minute in *Leptactina s.l.* except in *Leptactina papalis* (N.Hallé) De Block, formerly *Coleactina papalis* N.Hallé), the seeds being bicolored (however, the state of this character is unknown for several species of *Leptactina* and other Pavetteae), and the corolla tube having a narrow proximal part and a much wider and longer distal part (possibly unique in Pavetteae). The new Rubiaceae from Mt Gangan is atypical and differs from the standard state in all other genera of Pavetteae by having several-flowered axillary inflorescences (Fig. 4). This has been confirmed by observing the species during several seasons to ensure that the origin of the inflorescence is not terminal. However, some species of *Pavetta*, such as *P. mayumbensis* Bremek. also have such inflorescences, possibly by contraction of the short branches that bear terminal inflorescences in most species of that genus. The tribe is generally characterised by terminal inflorescences (De Block et al., 2015). However, in Clade II, the remarkable monotypic genus *Coleactina* from Gabon and the Republic of Congo, now included in *Leptactina s.l.*, and the species *Leptactina deblockiae* Neuba & Sonké (Neuba, Malan & Kouadio, 2014) also have axillary inflorescences, albeit 1-flowered and not several-flowered. Finally, the copious and conspicuous bright red exudate from the apical bud of the new Rubiaceae from Mt Gangan appears to be unique in Pavetteae and probably Rubiaceae. Colleter exudates are common in Rubiaceae, but are usually inconspicuous. Conspicuous colleter-derived exudates are known in some genera in tribe Coffeae, e.g., *Coffea* L., and in genera of other tribes, such as *Gardenia* J.Ellis. Although they are generally not reported in Pavetteae (Hallé, 1970; Bridson & Verdcourt, 1988; De Block et al., 2015), copious colleter exudate is present in the Madagascan Pavetteae genus *Robbrechtia* (De Block, 2003), and colleter exudate has also been observed in several other Pavetteae genera (P De Block, pers. comm., 2018). We have observed colleter exudates in some specimens of *Leptactina* (e.g., *Fofana 188*, *Jacques-Felix 7422*, both from Guinea, *Leptactina senegambica* Hook.f.; *Goyder 6258*, from Angola, *Leptactina benguellensis* (Benth. & Hook.f.) Good, all K!). As with all previously known Rubiaceae exudates except *Gardenia* (which is bright yellow, E Robbrecht, pers. comm., 2018), these are colourless or slightly yellow, and translucent, not bright red and opaque as in the new Rubiaceae from Mt Gangan.

The palynological differences between *Kindia* and *Leptactina s.l.* are extensive. All *Leptactina s.l.* have pollen type 2 (De Block & Robbrecht, 1998), i.e., the grains are circular to quadrangular in polar view, (3–)4-zonocolporate, with an apocolpial index of 0.39–0.68. In comparison, those of the new Rubiaceae from Mt Gangan are pollen type 1 (De Block & Robbrecht, 1998), since they are triangular in polar view (Fig. 2), 3-zonocolporate, with an apocolpial index of 0.125.

Possession of pollen type 1 by *Cheek 18541A* rather than pollen type 2, is consistent with its position as sister to Clade II since pollen type 1 ‘predominates in the whole of Rubiaceae and can be considered primitive’ (Robbrecht, 1988), that is, plesiomorphic. Pollen type



**Figure 4** *K. gangan* Cheek. (A) habit, with indication of bullate leaf surface; (B) plants *in situ* on rock face (from photograph); (C) adaxial leaf indumentum around midrib; (D) abaxial leaf indumentum around midrib; (E) inner face of stipule at second node; (F) secretory colleter from E; (G) flower, post-anthesis; (H) peduncle and proximal cup of bracts with lobes (sheathing and concealing a smaller distal cup of bracts) below flower; (I) corolla from post-anthesis flower cut longitudinally and opened to display inner surface; (J) stigma; (K) transverse section of mature fruit, empty of seeds but showing placenta (in the left locule); (L) seed, hydrated, lateral view; (M) seed, dry, lateral view; (N) seed, dry, view from above. Scale bars: A, B = 5 cm; G, I, K = 1 cm; H = 5 mm; C, D, E, J = 2 mm; F, L, M, N = 1 mm. Drawn by Andrew Brown based on Cheek 18345.

Full-size DOI: [10.7717/peerj.4666/fig-4](https://doi.org/10.7717/peerj.4666/fig-4)

1 also occurs in Pavetteae Clades III and IV (*De Block & Robbrecht, 1998; De Block et al., 2015*). The four apertures of pollen type 2 are considered as derived (*De Block & Robbrecht, 1998*) and likely represent a synapomorphy for *Leptactina s.l.* in Clade II.

With the discovery, characterisation and placement of the new Rubiaceae of Mt Gangan as sister to Clade II, re-interpretation of the polarity of some characters in the rest of the clade is in order. Features of *Leptactina papalis*, previously interpreted as apomorphies for the genus *Coleactina* now appear to be plesiomorphic with regard to the newly discovered taxon. These are: the well-developed calyx tube, and the pair of involucre cups (cupular bracts) surrounding the ovary (*Fig. 4H*). Alternatively, these features may have evolved independently in both *L. papalis* and the new taxon. Additional potentially plesiomorphic characters for Clade II are the axillary inflorescences found in several *Leptactina* species including *L. papalis* and *L. deblockiae* (*Neuba, Malan & Kouadio, 2014*), and the new Rubiaceae of Mt Gangan. The newly discovered lineage, sister to the rest of Clade II, may represent an evolutionary relict, as it is only known from a single morphologically and molecularly isolated species, which is rare, with less than 100 individuals found in the wild. The unexpected discovery of this lineage from West Africa, sister to *Leptactina s.l.*, which is most diverse in terms of species and morphology in Central Africa, e.g., in Gabon (*Hallé, 1970*) may also provide insights into the geographical origins of Clade II.

The unique habit of the new taxon within tribe Pavetteae may derive from adaptation to its unusual epilithic habitat: narrow fissures in vertical sandstone cliff faces (*Figs. 1A and 1B*). In this habitat, the well-developed aerial stems present in the rest of the tribe risk pulling the plants, by their mass, from the tiny fissures and pockets in which they are rooted. This circumstance appears to parallel the situation of *Mussaenda epiphytica* Cheek (tribe Mussaendeae, Rubiaceae; *Cheek, 2009*), a rare epiphytic species, similarly threatened with extinction (*Onana & Cheek, 2011; Lachenaud et al., 2013*), in a genus of shrubs and twining terrestrial climbers. *Mussaenda epiphytica* also appears to have mostly lost its ability to produce long stems, which was similarly conjectured to be disadvantageous in an epiphytic life form (*Cheek, 2009*). Several species of *Leptactina* are also subshrubs of nearly similar small stature to the new taxon, but these species have underground rootstocks and are terrestrial.

Plant exudates, including resins and gums, can occur as complex mixtures of different compound classes including carbohydrates, mono-, di- and tri-terpenoids (*Rhourri-Frih et al., 2012*). In this study, the colleter exudate of the new Rubiaceae from Mt Gangan was subjected to high resolution LC-MS/MS analysis for the first time to investigate the chemical composition and over 40 triterpenoids were detected including those assigned as the cycloartane class. These included those with the molecular formulae of dikamaliartanes A, D and F, or their isomers. The cycloartane triterpenoids, dikamaliartanes A–F have previously been subjected to antimicrobial assays using *Staphylococcus aureus*, *Candida albicans* and *Mycobacteria* but they did not reveal significant activity against these human pathogens (*Kunert et al., 2009*). Any potential role they may have against plant pathogens or as defence compounds requires further evaluation. Cycloartane triterpenoids are widely distributed in the plant kingdom and it has been suggested that cyclization of of (3S)-squalene 2,3-epoxide in higher plants occurs with formation of cycloartenol, which has

been considered to have a role in sterol biosynthesis, analogous to that of lanosterol in animals and fungi (Boar & Roner, 1975). Furthermore, some plant triterpenoids, including those derived from cycloartane, have been suggested to have a function in cell membrane composition (Nes & Heftmann, 1981), thus any evolutionary role they may have in members of the new Rubiaceae from Mt Gangan would be of interest to explore in further studies. Many triterpenoids of plant origin have been of interest for their chemical diversity, biological activities and potential therapeutic applications (Hill & Connolly, 2017; Howes, 2018). The triterpenoids detected in the exudate in this study would be of further interest not only for their biological activities that might aid understanding of their rationale for synthesis by this species, but also for their potential uses by humanity, if this can be done in a way consistent with the conservation of this rare and threatened species.

## TAXONOMIC TREATMENT

*Kindia* Cheek, gen nov.

Type: *Kindia gangan* Cheek

Diagnosis: differs from *Leptactina s.l.* in a corolla tube with a slender proximal part and an abruptly much wider, longer distal part (not more or less cylindrical, or gradually widening); a glabrous, winged pollen-presenter (not hairy, non-winged); an epilithic habit (not terrestrial, growing in soil); a conspicuous opaque red colleter exudate (not translucent and colourless or slightly yellow); and type 1 pollen (not type 2) (De Block & Robbrecht, 1998).

*Epilithic subshrub*, lacking underground rootstock. *Stems* short, unbranched, erect or appressed to substrate, reiterating from base, completely sheathed in marcescent stipules, stem indumentum simple, short. *Leaves* opposite, petiolate, equal in shape and size at each node, each stem with 2–3 pairs of leaves held  $\pm$  appressed to the vertical substrate; blades simple, entire; domatia absent; nervation pinnate; stipules broadly ovate, midline with a raised ridge; base of adaxial surface with a mixture of hairs and standard type colleters (Robbrecht, 1988) producing a vivid red exudate from the apical bud, conspicuous in dried specimens. *Inflorescences* axillary, opposite, in successive nodes, pedunculate-fasciculate, 1–4(–6)-flowered; bracts cupular, 2, sheathing, each with two large and two small lobes (Fig. 4H). *Flowers* 5-merous, homostylous. *Ovary-hypanthium* sessile, cylindrical, with a ring of orange colleters inserted above the base, continuous with the calyx tube and about twice as long as broad; inside of the calyx tube with dense band of colleters at base, calyx lobes 5, oblong-elliptic, about as long as tube. *Corolla* nearly twice as long as calyx; tube infundibular-campanulate, exceeding calyx; outer surface densely sericeous, inner surface subglabrous apart from a dense band of hairs just above the base; corolla lobes 5, at anthesis elliptic-oblong, arching outwards (appearing broadly ovate when viewed from above Fig. 1C), with apiculus, post-anthesis drying elliptic-triangular (Fig. 4I), about one third as long as tube, aestivation contorted to the left in bud. *Stamens* adnate to the corolla tube, five, inserted midway up corolla tube, alternating with corolla lobes; anthers narrowly oblong, sessile, attached near base, apical appendage not developed. *Ovary* 2-celled, placentation axile; placentae intrusive, swollen, ovules numerous; style



included, distal half hairy, basal part glabrous; pollen presenter (stylar head) dilated, outer surface glabrous, fluted-ridged, with two appressed stigmatic lobes at apex, apices tapering, acute, at same level as anthers. *Fruit* globose, ripening greenish-yellow or white, glossy, semi-translucent, outer surface hairy; pericarp succulent, thick, calyx persistent. *Seeds* numerous, truncated, 4–5-sided pyramidal (frustrums) glossy black; hilar area white, deeply excavated with a thickening inside; embryo occupying c. 5–10% of the seed volume, horizontal, cotyledons barely detectable.

***Kindia gangan*** Cheek *sp. nov.*—Figs. 1 and 4

*Type.* Republic of Guinea, Kindia Prefecture, Mt Gangan area, Kindia-Télimélé Rd, km 7, N of Mayon Khouré village, fr. 5 Feb. 2016, Cheek 18345 (holotype HNG!, isotypes BR!, K!, P!, US!).

*Perennial epilithic subshrub*, multi-stemmed from base. *Stems* very short, appressed to substrate or sometimes pendulous, not rooting at the nodes, woody, reiterating from base, completely sheathed in persistent dark brown stipules, 5–6(–35) cm long, each stem with 2–3 pairs of leaves held  $\pm$  appressed to the substrate; internodes (2.5–)5 mm long, 5–7 mm diam.; indumentum composed of short white patent hairs, 0.1–0.2 mm long. *Leaves* opposite, equal in shape and size at each node; blade elliptic (-obovate), (7.5–)9.4–11.7  $\times$  (3.2–)4.2–6.6(–7) cm; apex obtuse to shortly acuminate, acumen 1–2 mm long; base acute, abruptly decurrent to the upper 2–5 mm of the petiole; upper blade surface bullate; indumentum white, subappressed, 0.1–0.3 mm long, 30% cover; midrib hairs 0.3–0.4 mm long, 80% cover; midrib c. 1 mm broad, yellow drying white; secondary nerves (7–)8–10(–11) on each side of the midrib; lower surface of blade with indumentum as upper, denser, c. 40% cover; midrib 1.2–1.3 mm wide, showing 3 distinct longitudinal areas; the central area raised, convex, 40% covered in hairs; the lateral areas flat, 90% covered in hairs; domatia absent; secondary nerves arising at c. 60° from the midrib, curving near the margin and looping towards the leaf apex and uniting with the nerve above (brochidodromous); tertiary nerves conspicuous, raised, white puberulent scalariform (5–)6–8 between each pair of secondary nerves; quaternary nerves apparent only in the tertiary cells (areolae) towards the margin, each tertiary cell with 8–12 bullae (not always visible in the pressed specimens). *Petiole* semi-circular in transverse section, 3–4 mm long at the distal-most node, elongating to 6–10(–14) mm long at the second and third node from the apex. *Interpetiolar stipules* broadly ovate 3–5.5  $\times$  3–5 mm; apex acute or rounded to shortly acuminate; outer surface midline with a raised ridge; indumentum as upper surface of leaf blade; adaxial surface with colleters in line at the base, producing a vivid red exudate over the apical bud, conspicuous in dried specimens; *colleters* standard type (Robbrecht, 1988), orange, cylindrical, 0.5–1.5  $\times$  0.2 mm long, gradually tapering to a rounded apex, interspersed with bristly hairs 1–2 mm long at stipule base, otherwise hairs sparse, 0.2–0.4 mm long, 10–20% cover. *Inflorescences* axillary, opposite, and in successive nodes, pedunculate-fasciculate, 1–4(–6)-flowered. *Peduncle* 4–15  $\times$  1.5–2.5 mm; indumentum as upper surface of leaf-blade; bracts cupular, 2, outer (proximal) bract sheathing and concealing the smaller inner (distal) bract, 3.5–4  $\times$  5–7 mm, 4-lobed, with the large lobes (presumed of stipular origin) oblong-elliptic 4.5–6.5  $\times$  2.5 mm and the short lobes (presumed of leaf origin) triangular, 1–2  $\times$  2 mm.

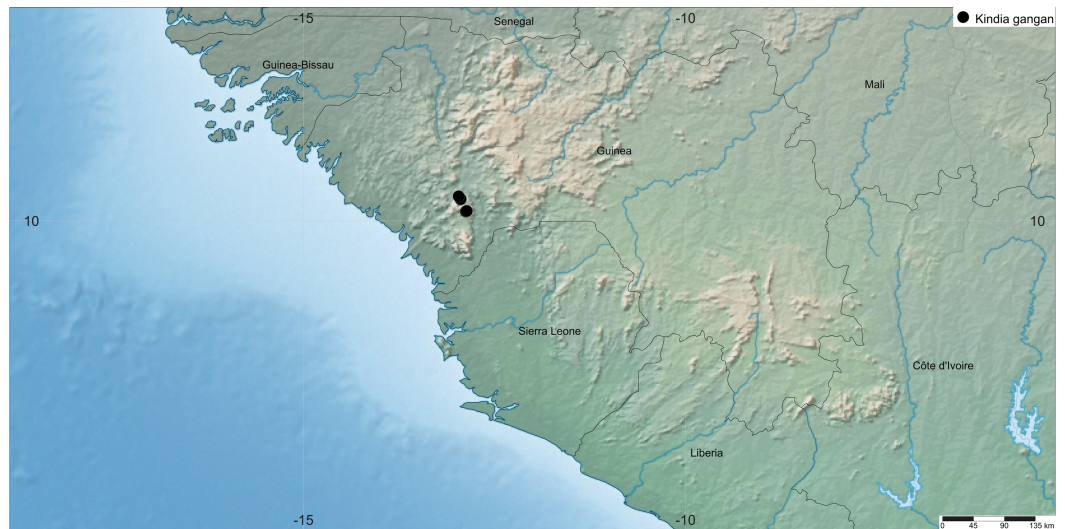
*Ovary-hypanthium* sessile (pedicel absent), partly concealed, and sunken in the axis below the insertion of the distal cupular bract (ovary locules extending below the junction of ovary with distal cupular bract), free part (that part which is not sunken into the axis) subcylindrical, 2 mm long, 4 mm in diameter at junction with calyx, hairs white, more or less patent, 0.5 mm long; ring of orange colleters 0.5–0.75 mm long, appressed, inserted about 1/3 up from base; calyx tube (3–)4–5(–10) × 4–5 mm at base, 5–6(–10) mm wide at apex; calyx lobes 5, oblong elliptic, 7–11 × 2–3(–4.5) mm, apex acute; indumentum on both surfaces 0.4–0.6(–1.1) mm long more or less patent, c. 50% cover on tube, 20–30% cover on lobes; inner surface also with a dense band of colleters at base, extending in lines a short distance up from the base of the calyx tube. *Corolla* white, infundibular-campanulate, 3–4.5 cm long pre-anthesis, at anthesis with lobes splayed, 4.2–4.3 cm wide at mouth including the lobes; outer surface of corolla densely pale brown sericeous, hairs 0.5 mm long, covering the surface; tube with two distinct sections, proximal and distal; proximal section slender, 6 × 2 mm, glabrous inside in proximal part, middle portion of the proximal tube with a densely puberulent band 1–2 mm long, hairs white 2 mm long forming a seal with the style; distal section of corolla tube abruptly wider, 2.2–2.6 × 1.4–1.6 cm, inner surface of distal section glabrous in proximal 2.2–2.4 cm, distalmost part of tube (at mouth) with thinly scattered hairs 0.1–0.2 mm long, 30–40% cover; lobes 5, glabrous inside, oblong-elliptic (appearing broadly ovate when viewed from above as in Fig. 1C), 9–12 × 6.5–9(–16) mm, then extending into a filiform appendage 3–4 mm long, apex acute, margins becoming involute post-anthesis. *Stamens* five, alternating with corolla lobes; anthers sessile, elliptic c. 5–6 × 1 mm, attached near the base and inserted 1.5 cm from corolla base. *Disc* bowl-shaped, 1 mm wide, 2 mm deep, glabrous, smooth. *Ovary* 2-celled, placentation axile; placentae intrusive, shield-shaped, 2 × 1.25 mm, 0.5 mm thick (including ovules); ovules 40–50 per locule, elliptic, 0.25 mm long; style included, 2.2 cm long, 1 mm diam. at base, proximal 9–9.5 mm glabrous, median 5–6 mm patent-hairy with hairs 0.3–0.5 mm long, distal 10.5–11 mm glabrous; pollen presenter (stylar head) dilated, with two appressed lobes 3 × 1–1.2 mm, outer surface fluted-ridged, apices tapering, acute. *Fruit* globose, 9–10 mm diam. sessile, ripening greenish-yellow or white, glossy, semi-translucent, outer surface with appressed white hairs 0.6–0.9 mm long; pericarp succulent, 2–3 mm thick, calyx persistent. *Seeds* numerous 30–50 per fruit, truncated, 4–5-sided, pyramid (frustum), 1.5–2 × 1.5–2 × 1.5 mm, the proximal (hilar end) white, the distal two-thirds glossy black; epidermis with finger-print surface pattern embryo minute, c. 0.3 mm long, cotyledons about 1/4 of length, not well demarcated.

### Distribution

République de Guinée, Kindia Prefecture, northeastern boundary of Mt Gangan area, west of Kindia-Telimélé Rd (Fig. 5).

### Ecology

The area of the Mt Gangan complex in which we found plants of *Kindia* consists of two parallel ranges of small sandstone table mountains separated by a narrow N–S valley that appears to be a geological fault. Bedding of the sandstone is horizontal. Uneven erosion on



**Figure 5** Map of the distribution of *K. gangan*. The distribution of the species was mapped using SimpleMappr.

Full-size  DOI: [10.7717/peerj.4666/fig-5](https://doi.org/10.7717/peerj.4666/fig-5)

some slopes has resulted in the formation of frequent rock ledges, overhangs and caves. In contrast, other flanks of the mountains are sheer cliffs extending 100 m or more high and wide. It is on the cliff areas at 230–540 m a.s.l that *K. gangan* occurs as the only plant species present, usually as scattered individuals in colonies of (1–3–)7–15 plants, on the bare expanses of rock that are shaded for part of the day due to the orientation of the cliffs or to overhangs or due to a partial screen of trees in front of the rockfaces. *Pitcairnia feliciana* (Bromeliaceae), in contrast is found in fully exposed sites where there is, due to the rock bedding, a horizontal sill in which to root. These two species can grow within metres of each other if their cliff microhabitats occur in proximity. The rock formations create a variety of other microhabitats, including vertical fissures, caves, shaded, seasonally wet ledges, and are inhabited by sparse small trees, shrubs, subshrubs, perennial and annual herbs, many of which are narrow endemic rock specialists. We speculate that the seed of this species might be bat-dispersed because of the greenish yellow-white colour of the berries (less attractive to birds than fruits which are e.g., red or black) and the position of the plants high on cliff faces, where nothing but winged creatures could reach them, apart from those few plants at the base of the cliffs. However, fruit dispersal is not always effected since we found numerous old dried intact fruits holding live seeds on the plants at the type locality in February 2016. It is possible that the robust, large white flowers are pollinated by a small species of bat since in June and September we saw signs of damage to the inner surface of the corolla inconsistent with visits by small insects. The damage takes the form of brown spots on the inner surface of the corolla tube. Freshly opened flowers do not have these spots, nor do all flowers, only those few which show slight damage. The very broad, short corolla is not consistent with pollination by sphingid moths (which prefer long, slender-tubed flowers), but this cannot be ruled out.

### Local names and uses

None are known. The local communities in the area when interviewed in November 2017, stated that they had no uses nor names for the plant (D Molmou & T Doré, pers. obs., 2017).

### Etymology

The genus is named for the town and prefecture of Kindia, Guinea's fourth city, and the species is named for Mt Gangan to its north, which holds the only known location for the species. Both names are derived as nouns in apposition.

### Conservation status

Knowledge of *K. gangan* is based on 15 days of searching in sandstone rock outcrops around the Mt Gangan complex in 2016–2017 by teams each comprising 3–5 botanists, together with local community representatives. This area was previously visited by several excellent botanists in the colonial period, notably by Jacques-Félix in 1934–37. Only 86 mature plants of *K. gangan* were seen at seven sites at two locations (as defined by [IUCN, 2012](#)). The two locations are separated by 19 km. Within locations, the sites are separated by 150 m–1.5 km. The Extent of Occurrence and Area of Occupancy were calculated as 27.96 km<sup>2</sup> and 20 km<sup>2</sup> respectively ([Bachman et al., 2011](#)). At each site (1–7–)10–20 plants occur gregariously. Accordingly, since less than 250 mature individuals are known of this species, it is here assessed as Endangered under Criterion D1 of [IUCN \(2012\)](#). It is to be hoped that more plants will be found, enabling a lower assessment of the threat to this species. Currently, threats to the plants at the 2 known locations of this species are low. Quarrying of sandstone for building construction in nearby Kindia, Guinea's fourth city occurs nearby, but fortunately one of the locations of *K. gangan* has no road access, so the known plants are not immediately threatened, while at the second location, plants are within reach of roads and so more threatened by future quarrying. It is to be hoped that further sites for the species will be found, lowering the extinction risk of the species. As a precautionary measure it is intended to feature the species in a poster campaign to raise public awareness, and to seedbank it in the newly created seed bank at the University of Gamal Abdel Nasser, Conakry and also at the Royal Botanic Gardens, Kew.

### Additional specimens examined

Republic of Guinea, Kindia Prefecture, Mt Gangan area, Mt Gnonkaoneh, NE of Mayon Khoure village which is W of Kindia-Télimélé rd., fl. 19 June 2016, *Cheek 18529* (HNG!, K!); Mt Khonondeh, NW of Mayon Khoure village which is W of Kindia to Télimélé rd., fl. 20 June 2017, *Cheek 18545* (HNG!, K!). Mt Gnonkaoneh, NE of Mayon Khoure village, fl. 30 Sept. 2016, *Cheek 18602* (HNG!, K!); near Kalakouré village, Kindia-Télimélé rd, fr. 1 Nov. 2017, *Doré 136* (HNG!, K!); Sougorunyah near Fritaqui village, fr. 6 Nov. 2017, *Molmou 1669* (HNG!, K!); Kebe Figuia near Fritaqui village, fr. 6 Nov. 2017, sight observation by Doré and Molmou. Additional observation (photo record): Mt Khonondeh, NW of Mayon Khoure village which is W of Kindia to Télimélé rd., fl. 20 June 2017, *Cheek 18541A*.

## CONCLUSIONS

*Kindia*, an endangered subshrub, restricted to bare, vertical rock faces of sandstone is described and placed in Clade II of tribe Pavetteae as sister to *Leptactina s.l.* based on chloroplast sequence data. The only known species, *K. gangan*, is distinguished from the species of *Leptactina s.l.* by a combination of characters: an epilithic habit; several-flowered axillary inflorescences; distinct calyx tube as long as the lobes; a infundibular-campanulate corolla tube with narrow proximal section widening abruptly to the distal section; presence of a dense hair band near base of the corolla tube; anthers and style deeply included, reaching about mid-height of the corolla tube; anthers lacking connective appendages and with sub-basal insertion; pollen type 1; pollen presenter winged and glabrous; orange colleters, which encircle the calyx-hypanthium, occur at base and inside the calyx and stipules and produce vivid red exudate. High resolution LC-MS/MS analysis revealed over 40 triterpenoid compounds in the colleter exudate, including those assigned to the cycloartane class. Triterpenoids are of interest for their diverse chemical structures, varied biological activities, and potential therapeutic value.

## ACKNOWLEDGEMENTS

Professor Basile Camara, former Director General of the Université Gamal Abdel Nasser de Conakry-Herbier National de Guinée, is thanked for arranging permits and for his long term support and collaboration. Janis Shillito is thanked for typing the manuscript. Charlie Gore assisted with scanning electron microscopy. The authors would like to thank Dr Geoffrey C. Kite, Royal Botanic Gardens, Kew, for acquiring the LC-MS data. Three reviewers, Dr Petra De Block, Dr Olivier Lachenaud and Prof. Elmar Robbrecht are thanked for constructive comments on earlier drafts of the paper.

## APPENDIX

Sampled plants and DNA sequences. For each plant the provenance, followed by collector and collector number, herbarium for deposition of voucher specimen (in parentheses), and GenBank accession numbers for *rps16* and *trnT-F*. FTEA: *Flora of tropical East Africa*. Abbreviation 's.n.' indicates no collection number. The newly generated sequences are in bold.

**Tribe Alberteae:** *Razafimandimbisonia humblotii* (Drake) Kainul. & B.Bremer—Madagascar, Tosh et al. 263 (BR), [KM592238](#), [KM592145](#).

**Tribe Coffeae:** *Tricalysia semidecidua* Bridson—Zambia, Desein et al. 1093 (BR), [KM592279](#), [KM592185](#).

**Tribe Ixoreae:** *Ixora sp.*—Thailand, Sudde 1487 (K), [KM592208](#), [KM592115](#).

**Tribe Gardenieae:** *Euclinia longiflora* Salisb.—Africa (country unknown), Van Caekenberghe 348 (BR), [KM592203](#), [KM592110](#).

*Gardenia rutenbergiana* (Baill. ex Vatke) J.-F.Leroy—Madagascar, Groeninckx et al. 24 (BR), [KM592204](#), [KM592111](#).

*Oxyanthus troupinii* Bridson—Burundi, Niyongabo 115 (BR), [KM592219](#), [KM592126](#).

**Tribe Mussaendeae: *Pseudomussaenda flava*** Verdc.—Africa (country unknown), Van Caekenberghe 60 (BR), [KM592217](#), [KM592124](#).

**Tribe Pavetteae: *Cladoceras subcapitatum*** (K.Schum. & K.Krause) Bremek.—Tanzania, Luke et al. 8351 (UPS), [AM117290](#), [KM592094](#).

***Coptosperma bernierianum*** (Baill.) De Block—Madagascar, Schatz et al. 3764 (MO), [KJ815340](#), [KJ815589](#); ***C. borbonicum*** (Hend. & Andr.Hend.) De Block—Comores, De Block 1389 (BR), [KM592189](#), [KM592096](#); ***C. borbonicum*** (Hend. & Andr.Hend.) De Block—Réunion, Kainulainen 189 (S), [KJ815342](#), [KJ815591](#); ***C. borbonicum*** (Hend. & Andr.Hend.) De Block—Unknown, Kroger et al. 56 (S), [KJ815341](#), [KJ815590](#); ***C. cymosum*** (Willd. ex Schult.) De Block—Mauritius, Razafimandimbison et al. 843 (S), [KJ815343](#), [KJ815592](#); ***C. graveolens*** (S.Moore) Degreef—Kenya, Mwachala 3711 (BR), [KM592200](#), [KM592107](#); ***C. humblotii*** (Drake) De Block—Madagascar, Bremer et al. 5167 (S), [KJ815345](#), [KJ815594](#); ***C. littorale*** (Hiern) Degreef—Mozambique, Luke et al. 9954 (UPS), [KM592190](#), [KM592097](#); ***C. madagascariense*** (Baill.) De Block—Madagascar, De Block et al. 2238 (BR), [KM592191](#), [KM592098](#); ***C. madagascariense*** (Baill.) De Block—Madagascar, Razafimandimbison 527 (UPS), [KM592191](#), [KM592098](#); ***C. mitochondrioides*** Mouly & De Block—Madagascar, Bremer et al. 5127 (S), [KJ815348](#), [KJ815597](#); ***C. nigrescens*** Hook.f.—Madagascar, De Block et al. 535 (BR), [KM592192](#), [KM592099](#); ***C. nigrescens*** Hook.f.—Kenya, Luke & Luke 9030 (UPS), [KM592193](#), [KM592100](#); ***C. peteri*** (Bridson) Degreef—Tanzania, Lovett & Congdon 2991 (BR), [KM592201](#), [KM592108](#); ***C. supra-axillare*** (Hemsl.) Degreef—Madagascar, De Block et al. 1321 (BR), [KM592194](#), [KM592101](#); ***C. sp. nov. A***—Madagascar, De Block et al. 720 (BR), [KM592199](#), [KM592106](#); ***C. sp. nov. B***—Madagascar, De Block et al. 796 (BR), [KM592195](#), [KM592102](#); ***C. sp. nov. C***—Madagascar, De Block et al. 1355 (BR), [KM592196](#), [KM592103](#); ***C. sp. nov. D***—Madagascar, De Block et al. 704 (BR), [KM592197](#), [KM592104](#); ***C. sp. nov. E***—Madagascar, De Block et al. 733 (BR), [KM592198](#), [KM592105](#).

***Homollea longiflora*** Arènes—Madagascar, De Block et al. 767 (BR), [KM592205](#), [KM592112](#); ***H. perrieri*** Arènes—Madagascar, Morat 4700 (TAN), [KM592206](#), [KM592113](#).

***Kindia gangan*** Cheek—Republic of Guinea, Cheek 18345 (K), [MG708505](#), [MG708506](#).

***Leptactina arborescens*** (Welw. ex Benth. & Hook.f.) De Block—Ghana, Schmidt et al. 1683 (MO), [KM592202](#), [KM592109](#); ***L. benguelensis*** (Welw. ex Benth. & Hook.f.) R.D.Good—Zambia, Dessein et al. 1142 (BR), [KM592209](#), [KM592116](#); ***L. delagoensis*** K.Schum.—Tanzania, Luke & Kibure 9744 (UPS), [KM592210](#), [KM592117](#); ***L. epinyctios*** Bullock ex Verdc.—Zambia, Dessein et al. 1348 (BR), [KM592211](#), [KM592118](#); ***L. involucreta*** Hook.f.—Cameroon, Davis 3028 (K), [KM592212](#), [KM592119](#); ***L. leopardi-secundi*** Büttner—Republic of Congo, Champluvier 5248 (BR), [KM592213](#), [KM592120](#); ***L. manni*** Hook.f.—Gabon, Dessein et al. 2518 (BR), [KM592214](#), [KM592121](#); ***L. papalis*** (N.Hallé) De Block—Gabon, Dessein et al. 2355 (BR), [KM592188](#), [KM592095](#); ***L. papyrophloea*** Verdc.—Tanzania, Luke & Kibure 9838 (UPS), [KM592215](#), [KM592122](#); ***L. pynaertii*** De Wild.—Republic of the Congo, Champluvier s.n. (BR), [KM592216](#), [KM592123](#).

***Nichallea soyauxii*** (Hiern) Bridson—Cameroon, Dessein et al. 1402 (BR), [KM592218](#), [KM592125](#).

*Paracephaelis cinerea* (A.Rich. ex DC.) De Block—Madagascar, De Block et al. 2193 (BR), [KM592220](#), [KM592127](#); *P. cinerea* (A.Rich. ex DC.) De Block—Madagascar, Bremer et al. 5122 (S), [KJ815372](#), [KJ815619](#); *P. saxatilis* (Scott-Elliot) De Block—Madagascar, De Block et al. 2401 (BR), [KM592221](#), [KM592128](#); *P. saxatilis* (Scott-Elliot) De Block—Madagascar, Razafimandimbison & Kroger 937 (S), [KJ815374](#), [KJ815622](#); *P. sericea* (Arènes) De Block, Madagascar, De Block et al. 849 (BR), [KM592207](#), [KM592114](#); *P. tiliacea* Baill.—Madagascar, Groeninckx et al. 113 (BR), [KM592222](#), [KM592129](#); *P. trichantha* (Baker) De Block—Aldabra (Seychelles), Friedmann 833385 (UPS), [KJ815376](#), [KJ815624](#); *P. sp.*—Madagascar, De Block 1174 (BR), [AM117331](#), [KJ815620](#).

*Pavetta abyssinica* Fresen.—Africa (unknown country), De Block 6 (BR), [FM204726](#), [FM207133](#); *P. agrostiphylla* Bremek.—Sri Lanka, Bremer B. & K. 936 (UPS), [KM592223](#), [KM592130](#); *P. batesiana* Bremek.—Gabon, Dessein et al. 2071 (BR), [KM592224](#), [KM592131](#); *P. hymenophylla* Bremek.—Tanzania, Luke et al. 9101 (UPS), [KM592225](#), [KM592132](#); *P. indica* L.—Sri Lanka, Andreasen 202 (UPS), [KM592226](#), [KM592133](#); *P. sansibarica* K.Schum.—Kenya, Luke et al. 8326 (UPS), [KM592227](#), [KM592134](#); *P. schumanniana* F.Hoffm. ex K.Schum.—Zambia, Dessein et al. 911 (BR), [KM592228](#), [KM592135](#); *P. stenosepala* K.Schum.—Kenya, Luke et al. 8318 (UPS), [KM592233](#), [KM592140](#); *P. suffruticosa* K.Schum.—Cameroon, Lachenaud et al. 838 (BR), [KM592231](#), [KM592138](#); *P. tarenoides* S.Moore—Kenya, Luke et al. 8325 (UPS), [KM592234](#), [KM592141](#); *P. ternifolia* Hiern—Burundi, Ntore 19 (BR), [KM592235](#), [KM592142](#); *P. tetramera* (Hiern) Bremek.—Gabon, Van de Weghe 163 (BR), [KM592236](#), [KM592143](#); *P. vaga* S.T.Reynolds—Australia, Harwood 1290 (DNA), [KM592237](#), [KM592144](#); *P. sp. A of FTEA* Bridson—Tanzania, Luke et al. 9134 (UPS), [KM592232](#), [KM592139](#); *P. sp. B*—Vietnam, Davis et al. 4082 (K), [KM592229](#), [KM592136](#); *P. sp. C*—Asia (country unknown), Van Caekenberghe 199 (BR), [KM592230](#), [KM592137](#).

*Robbrechtia grandifolia* De Block—Madagascar, Kårehed 311 (UPS), [KM592239](#), [KM592146](#); *R. milleri* De Block—Madagascar, Bremer et al. 5295 (S), [KM592240](#), [KM592147](#).

*Rutidea decorticata* Hiern—Cameroon, Maurin 14 (K), [KM592241](#), [KM592148](#); *R. dupuisii* De Wild.—Gabon, Dessein et al. 1802 (BR), [KM592242](#), [KM592149](#); *R. ferruginea* Hiern—Cameroon, Dessein et al. 1674 (BR), [KM592242](#), [KM592150](#); *R. fuscescens* Hiern—Tanzania, Luke et al. 9124 (UPS), [KM592244](#), [KM592151](#); *R. membranacea* Hiern—Liberia, Adam 21433 (UPS), [KM592245](#), [KM592152](#); *R. olenotricha* Hiern—Ghana, Schmidt et al. 1731 (MO), [KM592246](#), [KM592153](#); *R. parviflora* DC.—Liberia, Adam 20156 (UPS), [KM592248](#), [KM592154](#); *R. seretii* De Wild.—Cameroon, Gereau 5588 (UPS), [KM592249](#), [KM592155](#).

*Schizenterospermum grevei* Homolle ex Arènes—Madagascar, De Block et al. 2167 (BR), [KM592250](#), [KM592156](#); *S. rotundifolia* Homolle ex Arènes—Madagascar, De Block et al. 771 (BR), [KM592251](#), [KM592157](#).

*Tarenna alleizettei* (Dubard & Dop) De Block—Madagascar, De Block et al. 1883 (BR), [KM592272](#), [KM592178](#); *T. alleizettei* (Dubard & Dop) De Block—Madagascar, Kårehed 313A (UPS), [KJ815382](#), [KJ815630](#); *T. alpestris* (Wight) N.P.Balacr.—India, De Block 1474 (BR), [KM592252](#), [KM592158](#); *T. asiatica* (L.) Kuntze ex K.Schum.—India,

Auroville 998 (SBT), [KM592253](#), [KM592159](#); *T. bipindensis* (K.Schum.) Bremek., Liberia, Jongkind 8495 (BR), [KM592255](#), [KM592161](#); *T. capuroniana* De Block—Madagascar, De Block et al. 937 (BR), [KM592273](#), [KM592179](#); *T. capuroniana* De Block—Madagascar, Bremer et al. 5041 (S), [KJ815386](#), [KJ815634](#); *T. depauperata* Hutch.—China, Chow & Wan 79063 (UPS), [KM592256](#), [KM592162](#); *T. flava* Alston—Sri Lanka, Klackenberg 440 (S), [KM592257](#), [KM592163](#); *T. fuscoflava* (K.Schum.) S.Moore—Ghana, Schmidt et al. 2099 (MO), [KM592258](#), [KM592164](#); *T. gracilipes* (Hayata) Ohwi—Japan, Van Caekenberghe 149 (BR), [KM592259](#), [KM592165](#); *T. grevei* (Drake) Homolle—Madagascar, De Block et al. 959 (BR), [KM592274](#), [KM592180](#); *T. jolinonii* N.Hallé—Gabon, Champluvier 6098 (BR), [KM592260](#), [KM592166](#); *T. lasiorachis* (K.Schum. & K.Krause) Bremek.—Gabon, Wieringa 4432 (WAG), [KM592261](#), [KM592167](#); *T. leioloba* (Guillaumin) S.Moore—New Caledonia, Mouly 174 (P), [KM592262](#), [KM592168](#); *T. microcarpa* (Guillaumin) Jérémie—New Caledonia, Mouly 297 (P), [KM592263](#), [KM592169](#); *T. nitidula* (Benth.) Hiern—Liberia, Jongkind 8000 (BR), [KM592264](#), [KM592170](#); *T. pallidula* Hiern—Gabon, Dessein et al. 2215 (BR), [KM592265](#), [KM592171](#); *T. pembensis* J.E.Burrows—Mozambique, Luke et al. 10136 (UPS), [KM592266](#), [KM592172](#); *T. precidantenna* N.Hallé—Gabon, Dessein et al. 2360 (BR), [KM592267](#), [KM592173](#); *T. rhypalostigma* (Schltr.) Bremek.—New Caledonia, Mouly 182 (P), [KM592268](#), [KM592174](#); *T. roseicosta* Bridson—Tanzania, Luke et al. 9170 (UPS), [KM592269](#), [KM592175](#); *T. sambucina* (G.Forst.) T.Durand ex Drake—New Caledonia, Mouly et al. 364 (P), [KM592270](#), [KM592176](#); *T. spiranthera* (Drake) Homolle—Madagascar, De Block et al. 946 (BR), [KM592275](#), [KM592181](#); *T. thouarsiana* (Drake) Homolle—Madagascar, De Block et al. 655 (BR), [KM592276](#), [KM592182](#); *T. uniflora* (Drake) Homolle—Madagascar, Bremer et al. 5230 (S), [KM592277](#), [KM592183](#); *T. vignei* Hutch. & Dalziel—Republic of Guinea, Jongkind 8126 (BR), [KM592271](#), [KM592177](#).

*Tennantia sennii* (Chiov.) Verdc. & Bridson—Kenya, Luke et al. 8357 (UPS), [KM592278](#), [KM592184](#).

**Tribe Vanguerieae:** *Vangueria madagascariensis* J.F.Gmel.—Africa (country unknown), Delprete 7383 (NY), [EU821636](#).

## ADDITIONAL INFORMATION AND DECLARATIONS

### Funding

Professor Isabel Larridon is supported by the B.A. Krukoff fund. Rio Tinto funded the mission to the Republic of Guinea during which this discovery was made as part of their contribution to biodiversity capacity building and redlisting which contributes to the ‘Important Plant Areas in the Republic of Guinea’ supported by the Darwin Initiative of the Department of the Environment Food and Rural Affairs (DEFRA), UK government (project Ref. 23–002). The funders had no role in study design, data collection and analysis, decision to publish, or preparation of the manuscript.

### Grant Disclosures

The following grant information was disclosed by the authors:  
B.A. Krukoff fund.



Darwin Initiative of the Department of the Environment Food and Rural Affairs (DEFRA).

### Competing Interests

The authors declare there are no competing interests.

### Author Contributions

- Martin Cheek, Melanie-Jayne R. Howes and Isabel Larridon conceived and designed the experiments, performed the experiments, analyzed the data, contributed reagents/materials/analysis tools, prepared figures and/or tables, authored or reviewed drafts of the paper, approved the final draft.
- Sékou Magassouba, Tokpa Doré, Saïdou Doumbouya, Denise Molmou, Aurélie Grall and Charlotte Couch performed the experiments, contributed reagents/materials/analysis tools, authored or reviewed drafts of the paper, approved the final draft.

### Field Study Permissions

The following information was supplied relating to field study approvals (i.e., approving body and any reference numbers):

Permits to export the studied specimens were issued by the Ministère de l'Environnement et des Eaux et Forêts of the Republic of Guinea, Certificat d'Origine no 0000344 (date 21 June 2016) and no 0000399 (dated 28 October 2016).

### DNA Deposition

The following information was supplied regarding the deposition of DNA sequences:

The newly generated sequence data are not yet publicly available, but have been deposited to GenBank, and are available as part of the [Data S1](#) (sequence alignment used for the analyses).

### Data Availability

The following information was supplied regarding data availability:

GenBank accession numbers included in [Appendix 1](#) and in [Data S1](#) (sequence alignment used for the analyses).

### New Species Registration

The following information was supplied regarding the registration of a newly described species:

Genus name: *Kindia*, LSID: 77177782-1.

Species name: *Kindia gangan*, LSID: 77177783-1.

### Supplemental Information

Supplemental information for this article can be found online at <http://dx.doi.org/10.7717/peerj.4666#supplemental-information>.

## REFERENCES

- Adam JG. 1974.** Un *Clerodendrum* nouveau pour la Guinée, *Clerodendrum sylviae* JG Adam. *Adansonia sér.* **2**, **14(2)**:303–306.

- Anderson S. 2002.** Identifying important plant areas: a site selection manual for Europe. Plantlife International, Salisbury. Available at [http://www.plantlife.org.uk/publications/identifying\\_important\\_plant\\_areas\\_a\\_site\\_selection\\_manual\\_for\\_europe](http://www.plantlife.org.uk/publications/identifying_important_plant_areas_a_site_selection_manual_for_europe) (accessed on 20 November 2017).
- Bachman S, Fernandez EP, Hargreaves S, Nic Lughadha E, Rivers M, Williams E. 2016.** Extinction risk and threats to plants. In: *State of the World's plants report 2016*. Kew: Royal Botanic Gardens, 58–63. Available at <https://stateoftheworldsplants.com/2016/> (accessed on 20 November 2017).
- Bachman S, Moat J, Hill AW, De la Torre J, Scott B. 2011.** Supporting Red List threat assessments with GeoCAT: geospatial conservation assessment tool, in: Smith V, Penev L, eds. e-Infrastructures for data publishing in biodiversity science. *ZooKeys* **150**:117–126 DOI [10.3897/zookeys.150.2109](https://doi.org/10.3897/zookeys.150.2109).
- Boar RB, Roner RC. 1975.** Cycloartane triterpenoids. *Phytochemistry* **14**(5–6):1143–1146 DOI [10.1016/S0031-9422\(00\)98584-4](https://doi.org/10.1016/S0031-9422(00)98584-4).
- Bridson D, Forman L. 1998.** *The Herbarium handbook*. 3rd edition. Kew: Royal Botanic Gardens.
- Bridson D, Verdcourt B. 1988.** Rubiaceae (Part 2). In: *Flora of tropical East Africa*. Rotterdam: Balkema.
- Brummitt NA, Bachman SP, Griffiths-Lee J, Lutz M, Moat JF, Farjon A, Donaldson JS, Hilton-Taylor C, Meagher TR, Albuquerque S, Aletrari E, Andrews AK, Atchison G, Baloch E, Barlozzini B, Brunazzi A, Carretero J, Celesti M, Chadburn H, Cianfoni E, Cockel C, Coldwell V, Concetti B, Contu S, Crook V, Dyson P, Gardiner L, Ghanim N, Greene H, Groom A, Harker R, Hopkins D, Khela S, Lakeman-Fraser P, Lindon H, Lockwood H, Loftus C, Lombri D, Lopez-Poveda L, Lyon J, Malcolm-Tompkins P, McGregor K, Moreno L, Murray L, Nazar K, Power E, Quiton Tuijelaars M, Salter R, Segrott R, Thacker H, Thomas LJ, Tingvoll S, Watkinson G, Wojtaszekova K, Nic Lughadha EM. 2015.** Green plants in the red: a baseline global assessment for the IUCN Sampled Red List Index for Plants. *PLOS ONE* **10**(8):e0135152 DOI [10.1371/journal.pone.0135152](https://doi.org/10.1371/journal.pone.0135152).
- Brunel JF. 1987.** Sur le genre *Phyllanthus* L et quelques genres voisins de la tribu des Phyllantheae Dumort. (Euphorbiaceae-Phyllantheae) en Afrique Intertropicale et à Madagascar. PhD thesis, Université Louis Pasteur, Strasbourg.
- CCD. 2017.** Combined Chemical Dictionary online (CCD 21.1) Taylor & Francis group. Available at <http://ccd.chemnetbase.com/dictionary> (accessed on 17 November 2017).
- Champluvier D, Darbyshire I. 2009.** A revision of the genera *Brachystephanus* and *Oreacanthus* (Acanthaceae) in tropical Africa. *Systematics & Geography of Plants* **79**:115–192 DOI [10.2307/25746605](https://doi.org/10.2307/25746605).
- Cheek M. 2009.** *Mussaenda epiphytica* sp. nov. (Rubiaceae), an epiphytic shrub from cloud forest of the Bakossi Mts, Western Cameroon. *Nordic Journal of Botany* **27**:456–459 DOI [10.1111/j.1756-1051.2009.00576.x](https://doi.org/10.1111/j.1756-1051.2009.00576.x).
- Cheek M, Ameka G. 2016.** *Macropodiella cussetiana* (Podostemaceae) a new species from Côte d'Ivoire. *Kew Bulletin* **71**:Article 21 DOI [10.1007/S12225-016-9634-9](https://doi.org/10.1007/S12225-016-9634-9).

- Cheek M, Van der Burgt X. 2010.** *Gymnosiphon samoritourenus* (Burmanniaceae) a new species from Guinea, with new records of other achlorophyllous heteromycotrophs. *Kew Bulletin* 65:83–88 DOI 10.1007/s12225-010-9180-9.
- Cheek M, Challen G, Lebbie A, Banks H, Barberá P, Riina R. 2016.** Discovering *Karima* (Euphorbiaceae) a new Crotonoid genus from West Tropical Africa long hidden within *Croton*. *PLOS ONE* 11(4):e0152110 DOI 10.1371/journal.pone.0152110.
- Cheek M, Challen G, Merklinger F, Molmou D. 2013.** *Breynia disticha*, a new invasive alien for Tropical Africa. *Aliens* 33:32–34.
- Cheek M, Luke Q. 2016.** *Calophyllum* (Clusiaceae–Guttiferae) in Africa. *Kew Bulletin* 71:Article 20 DOI 10.1007/S12225-016-9637-6.
- Cheek M, Williams T. 2016.** *Psychotria samoritourei* (Rubiaceae), a new liana species from Loma-Man in Upper Guinea, West Africa. *Kew Bulletin* 71 In Press DOI 10.1007/S12225-016-9638-5.
- Corlett RT. 2016.** Plant diversity in a changing world: status, trends, and conservation needs. *Plant Diversity* 38:10–16 DOI 10.1016/j.pld.2016.01.001.
- Couch C, Molmou D, Camara B, Cheek M, Merklinger F, Davies L, Harvey Y, Lopez Poveda L, Redstone S. 2014.** Conservation of threatened Guinean inselberg species. Abstracts of the XXth AETFAT Congress, South Africa, 2014 [Abstract 96]. *Scripta Botanica Belgica* 52.
- Darbyshire I, continuously updated.** Tropical important plant areas. Available at <http://science.kew.org/strategic-output/tropical-important-plant-areas> (accessed on 20 November 2017).
- Darbyshire I, Anderson S, Asatryan A, Byfield A, Cheek M, Clubbe C, Ghrabi Z, Harris T, Heatubun CD, Kalema J, Magassouba S, McCarthy B, Milliken W, De Montmollin B, Nic Lughadha E, Onana JM, Doumbouya S, Sârbu A, Shrestha K, Radford EA. 2017.** Important plant areas: revised selection criteria for a global approach to plant conservation. *Biodiversity and Conservation* 26:1767–1800 DOI 10.1007/s10531-017-1336-6.
- Darbyshire I, Pearce L, Banks H. 2012.** The genus *Isoglossa* (Acanthaceae) in West Africa. *Kew Bulletin* 66:425–439 DOI 10.1007/s12225-011-9292-x.
- Davis PH, Heywood VH. 1963.** *Principles of angiosperm taxonomy*. Princeton: Van Nostrand.
- De Block P. 2003.** *Robbrechtia*, a new Rubiaceae genus from Madagascar. *Systematic Botany* 28:145–156.
- De Block P, Razafimandimbison SG, Janssens S, Ochoterena H, Robbrecht E, Bremer B. 2015.** Molecular phylogenetics and generic assessment in the tribe Pavetteae (Rubiaceae). *Taxon* 64(1):79–95 DOI 10.12705/641.19.
- De Block P, Robbrecht E. 1998.** Pollen morphology of the Pavetteae (Rubiaceae, Ixoroideae) and its taxonomic significance. *Grana* 37:260–275 DOI 10.1080/00173139809362678.
- Fischer E, Darbyshire I, Cheek M. 2011.** *Striga magnibracteata* (Orobanchaceae) a new species from Guinée and Mali. *Kew Bulletin* 66:441–445 DOI 10.1007/s12225-011-9296-6.

- Goyder DJ. 2009.** *Xysmalobium samoritourei* (Apocynaceae: Asclepiadoideae), a new species from the Guinea Highlands of West Africa. *Kew Bulletin* **63**:473–475 DOI [10.1007/s12225-008-9059-1](https://doi.org/10.1007/s12225-008-9059-1).
- Hallé N. 1970.** Famille des Rubiacées (2 parts). In: *Flore du Gabon*, vol. 17. Paris: Muséum National d'Histoire Naturelle, 335.
- Harvey Y, Baena S, Williams T, Cisse S, Pearce L, Van der Burgt X, Cheek M. 2010.** Guinea-Conakry: new discoveries in the Simandou range. In: Van der Burgt X, ed. *Proceedings of the 2007 AETFAT congress*. Kew: Royal Botanic Gardens.
- Hepper FN, Keay RWJ. 1963.** Rubiaceae. Key to the Tribes. In: Hepper FN, ed. *Flora of West Tropical Africa*. 2nd edition. Vol. 2. London: Crown Agents, 104.
- Herbier National de Guinée. 2017.** Zones importantes des plantes. Available at <http://www.herbiiergee.org/ztips-darwin.html> (accessed on 21 November 2017).
- Hill RA, Connolly JD. 2017.** Triterpenoids. *Natural Product Reports* **34**:90–122 DOI [10.1039/C6NP00094K](https://doi.org/10.1039/C6NP00094K).
- Howes M-JR. 2018.** Phytochemicals as anti-inflammatory nutraceuticals and phytopharmaceuticals. In: Chatterjee S, Jungraithmayr W, Bagchi D, eds. *Immunity and inflammation in health and disease. Emerging roles of nutraceuticals and functional foods in immune support*. London, Oxford, San Diego, Cambridge: Academic Press (Elsevier), 363–388.
- IPNI.** The international plant names index. Available at <http://www.ipni.org/> (accessed on 20 November 2017).
- IUCN. 2012.** *IUCN Red List categories and criteria: Version 3.1*. Second edition. Gland, Cambridge: IUCN.
- Katoh K, Asimenos G, Toh H. 2009.** Multiple alignment of DNA sequences with MAFFT. *Methods in Molecular Biology* **537**:39–64 DOI [10.1007/978-1-59745-251-9\\_3](https://doi.org/10.1007/978-1-59745-251-9_3).
- Katoh K, Standley DM. 2013.** MAFFT multiple sequence alignment software version 7: improvements in performance and usability. *Molecular Biology and Evolution* **30**:772–780 DOI [10.1093/molbev/mst010](https://doi.org/10.1093/molbev/mst010).
- Kearse M, Moir R, Wilson A, Stones-Haves S, Cheung M, Sturrock S, Buxton S, Cooper A, Markowitz S, Duran C, Thierer T, Ashton B, Meintjes P, Drummond A. 2012.** Geneious Basic: an integrated and extendable desktop software platform for the organization and analysis of sequence data. *Bioinformatics* **28**:1647–1649 DOI [10.1093/bioinformatics/bts199](https://doi.org/10.1093/bioinformatics/bts199).
- Kunert O, Sreekanth G, Babu GS, Rao BVRA, Radhakishan M, Kumar BR, Saf R, Rao AVNA, Schühly W. 2009.** Cycloartane triterpenes from Dikamali, the gum resin of *Gardenia gummifera* and *Gardenia lucida*. *Chemistry & Biodiversity* **6**(8):1185–1192 DOI [10.1002/cbdv.200800339](https://doi.org/10.1002/cbdv.200800339).
- Lachenaud O, Droissart V, Dessen S, Stévant T, Simo M, Lemaire B, Taedoung H, Sonké B. 2013.** New records for the flora of Cameroon, including a new species of *Psychotria* (Rubiaceae) and range extensions for some rare species. *Plant Ecology and Evolution* **146**:121–133 DOI [10.5091/pleveo.2013.632](https://doi.org/10.5091/pleveo.2013.632).

- Larridon I, Couch C. 2016.** Training the trainers in Guinea. Available at <https://www.kew.org/blogs/kew-science/training-trainers-guinea> (accessed on 21 November 2017).
- Lisowski S. 2009.** Flore (angiospermes) de la République de Guinée. *Scripta Botanica Belgica* volumes 41 & 42. Meise: National Botanic Garden of Belgium.
- Magassouba S, Camara B, Guilovogui K, Cheek M, Couch C, Lopez Poveda L, Van der Burgt X, Bachman S, Harvey Y. 2014.** Hunting threatened taxa of Guinea. Abstracts of the XXth AETFAT Congress, South Africa, 2014 [Abstract 255]. *Scripta Botanica Belgica* 52.
- Miller MA, Pfeiffer W, Schwartz T. 2010.** Creating the CIPRES science gateway for inference of large phylogenetic trees. 14 November 2010, New Orleans. 1–8.
- Müller J, Müller K, Neinhuis C, Quandt D. 2010.** PhyDE—Phylogenetic Data Editor, version 0.9971. Available at <http://www.phyde.de/> (accessed on 10 January 2016).
- Nes WD, Heftmann E. 1981.** A comparison of triterpenoids with steroids as membrane components. *Journal of Natural Products* 44(4):377–400 DOI 10.1021/np50016a001.
- Neuba DFR, Malan DF, Kouadio YL. 2014.** Notes sur le genre Africain *Leptactina* Hook.f. (Rubiaceae, Pavetteae). *Adansonia sér.* 3, 36(1):121–153 DOI 10.5252/a2014n1a11.
- Onana J-M, Cheek M. 2011.** *Red data book of the flowering plants of Cameroon: IUCN global assessments*. Kew: Royal Botanic Gardens.
- Phillips SM, Mesterházy A. 2015.** Revision of small ephemeral species of *Eriocaulon* (Eriocaulaceae) in West Africa with long involucral bracts. *Kew Bulletin* 70:Article 5 DOI 10.1007/s12225-014-9557-2.
- Plantlife International. 2004.** Identifying and protecting the world's most important plant areas. Plantlife International, Salisbury. Available at [http://www.plantlife.org.uk/publications/identifying\\_and\\_protecting\\_the\\_worlds\\_most\\_important\\_plant\\_areas](http://www.plantlife.org.uk/publications/identifying_and_protecting_the_worlds_most_important_plant_areas) (accessed on 20 November 2017).
- Porembski S, Barthlott W. 1999.** *Pitcairnia feliciana*: the only indigenous African bromeliad. *Harvard Papers in Botany* 4(1):175–184.
- Prance GT, Jongkind CCH. 2015.** A revision of African Lecythidaceae. *Kew Bulletin* 70:6 DOI 10.1007/s12225-014-9547-4.
- Rambaut A. 2016.** FigTree version 1.4.3. Available at <http://tree.bio.ed.ac.uk/software/figtree/> (accessed on 10 January 2017).
- Rambaut A, Suchard MA, Xie D, Drummond AJ. 2014.** Tracer, version 1.6 [online computer program]. Available at <http://beast.bio.ed.ac.uk/Tracer/> (accessed on 10 January 2016).
- Rhourri-Frih B, West C, Pasquier L, André P, Chaimbault P, Lafosse M. 2012.** Classification of natural resins by liquid chromatography-mass spectrometry and gas chromatography-mass spectrometry using chemometric analysis. *Journal of Chromatography A* 1256:177–190 DOI 10.1016/j.chroma.2012.07.050.
- Robbrecht E. 1988.** Tropical woody Rubiaceae: characteristic features and progressions; contributions to a new subfamilial classification. *Opera Botanica Belgica* 1:1–271.
- Ronquist F, Teslenko M, Van der Mark P, Ayres DL, Darling A, Höhna S, Larget B, Liu L, Suchard MA, Huelsenbeck JP. 2012.** MrBayes 3.2: efficient Bayesian

phylogenetic inference and model choice across a large model space. *Systematic Biology* **61**:539–542 DOI 10.1093/sysbio/sys029.

- Schymanski EL, Jeon J, Gulde R, Fenner K, Ruff M, Singer HP, Hollender J. 2014.** Identifying small molecules via high resolution mass spectrometry: communicating confidence. *Environmental Science and Technology* **48**:2097–2098 DOI 10.1021/es5002105.
- Shorthouse DP. 2010.** SimpleMappr, an online tool to produce publication-quality point maps. Available at <http://www.simplemappr.net> (accessed on 22 November 2017).
- Sosef MS, Dauby G, Blach-Overgaard A, Van der Burgt X, Catarino L, Damen T, Deblauwe V, Dessein S, Dransfield J, Droissart V, Duarte MC, Engledow H, Fadeur G, Figuera R, Gereau RE, Hardy OJ, Harris DJ, De Heij J, Janssens S, Klomberg Y, Ley AC, Mackinder BA, Meerts P, Van de Poel JL, Sonké B, Stévant T, Stoffelen P, Svenning JC, Sepulchre P, Zaiss R, Wieringa JJ, Couvreur TLP. 2017.** Exploring the floristic diversity of tropical Africa. *BMC Biology* **15**:15 DOI 10.1186/s12915-017-0356-8.
- Stamatakis A. 2014.** RAxML Version 8: a tool for phylogenetic analysis and post-analysis of large phylogenies. *Bioinformatics* **30**:1312–1313 DOI 10.1093/bioinformatics/btu033.
- Stöver BC, Müller KF. 2010.** TreeGraph 2: combining and visualizing evidence from different phylogenetic analyses. *BMC Bioinformatics* **11**:7 DOI 10.1186/1471-2105-11-7.
- Thiers B, continuously updated.** Index herbariorum. Available at <http://sweetgum.nybg.org/science/ih/> (accessed on 20 November 2017).
- Van der Burgt XM, Haba PK, Haba PM, Goman AS. 2012.** *Eriosema triformum* (Leguminosae: Papilionoideae), a new unifoliolate species from Guinea, West Africa. *Kew Bulletin* **67**:263–271 DOI 10.1007/s12225-012-9357-5.