



Haritarium

Family Code: 27

Species code: 6 -1A

Naoroji Godrej Centre for Plant Research

Tabernaemontana alternifolia L.

Botanical name: *Tabernaemontana alternifolia* L.

(=*Ervatamia heyneana* (Wall.) T. Cooke, *Tabernaemontana heyneana* Wall.)

Vernacular name: Nagkuda.

Family: Apocynaceae

Threatened category: Endemic

Key characters: Large shrubs or small trees, Latex white, Leaves alternate, corolla lobes 5 Fruits follicular, Seeds arillate with red or orange aril, not comose.

Description: Large shrubs or small trees, 2.5 – 4 m tall. Bark rough, grey coloured, axillary glands small, numerous. Leaves oblong to oblong-lanceolate, acute at base, shortly acuminate at apex, 7-15 X 3.5 – 6.0 cm. Petioles 1.2 –1.8 cm long, base swollen. Flowers white, in many-flowered peduncled cymes. Calyx coriaceous, glabrous. Corolla tube inflated near the top. , lobes overlapping to right. Follicles 2.5-3 X 0.9-1.2 cm, curved. Seeds 1.2 cm long.

Flowering and fruiting: March – August.

Distribution: India: Endemic to Western Ghats,

Reported Localities: Pune, Raigad, Ratnagiri, Satara

Ecology: Occurs in less disturbed semi evergreen forests or edges of ever green forests. Prefers gentle slopes. Sparsely distributed. Altitude ranges between 600-1200m above sea level.

Association: No specific plant association is observed.



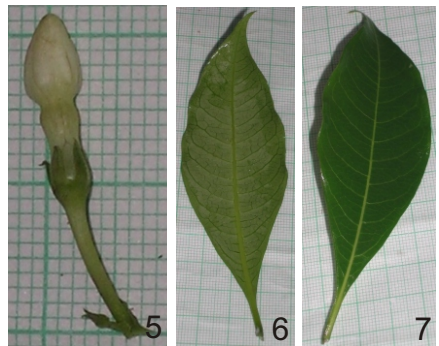
Haritarium

Family Code: 27

Species code: 6 -1B

Naoroji Godrej Centre for Plant Research

***Tabernaemontana alternifolia* L.**



1.Habitat,2&3 Flower, 4. Fruit, 5.Flower bud, 6. Leaf- dorsal view, 7. Leaf- ventral view.



Haritarium

Family Code: 27

Species code: 6 -1C

Naoroji Godrej Centre for Plant Research

***Tabernaemontana alternifolia* L.**





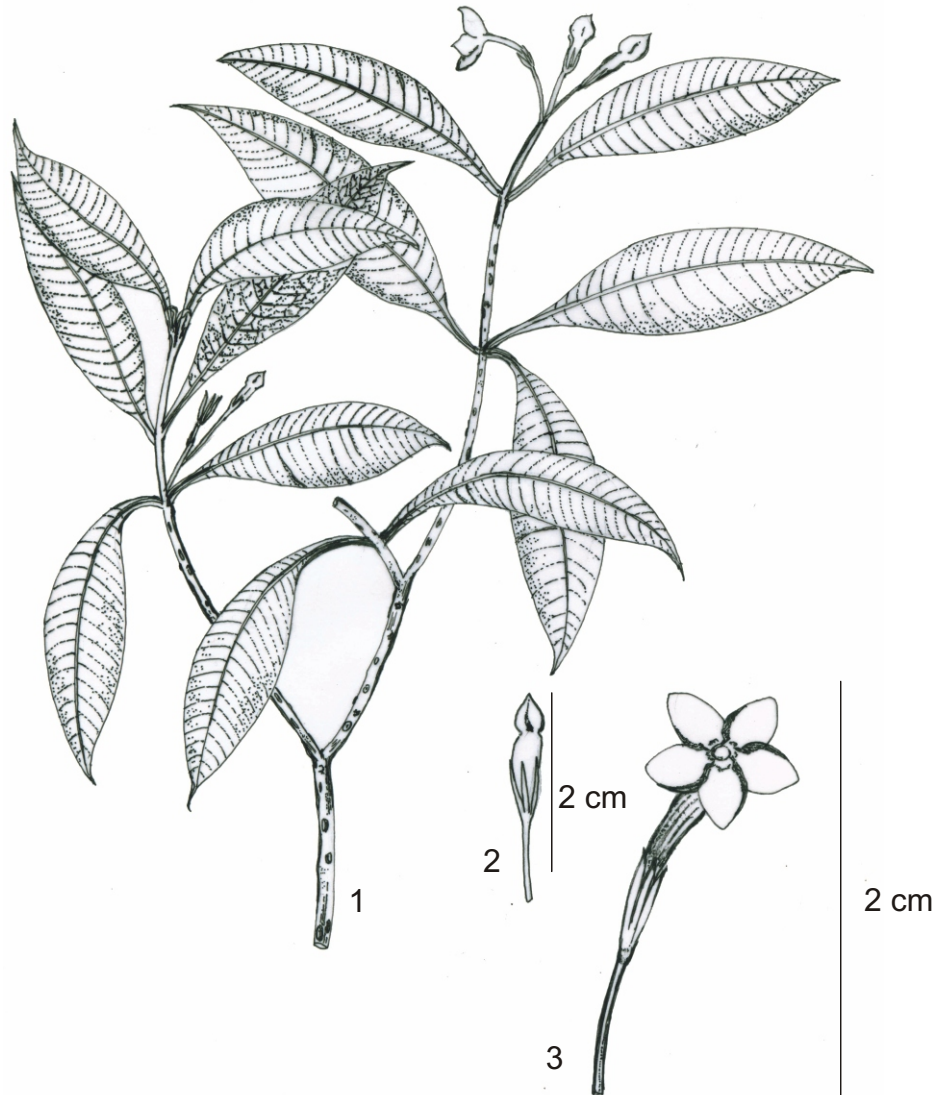
Haritarium

Family Code: 27

Species code: 6 -1D

Naoroji Godrej Centre for Plant Research

***Tabernaemontana alternifolia* L.**



1. Habit, 2. Bud, 3. Flower.



Haritarium

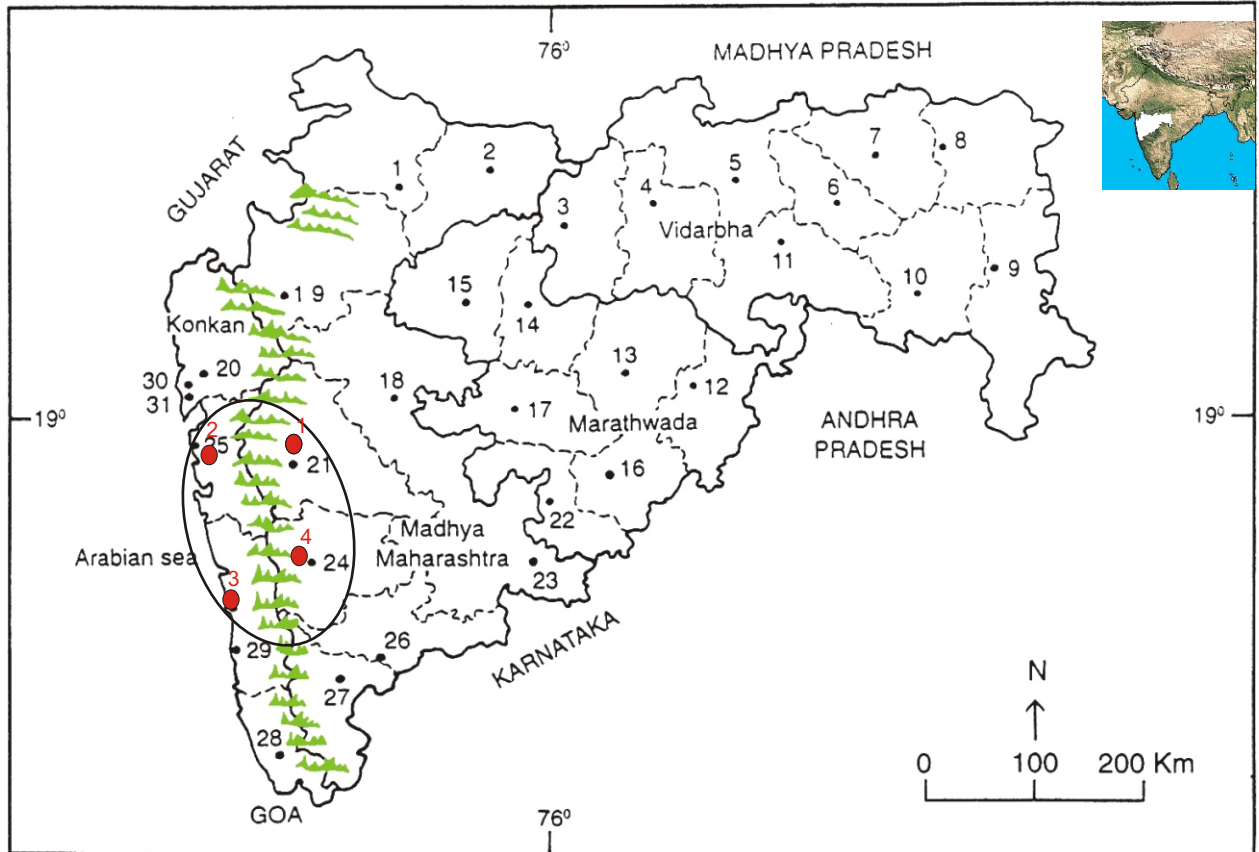
Family Code: 27

Species code: 6 -1E

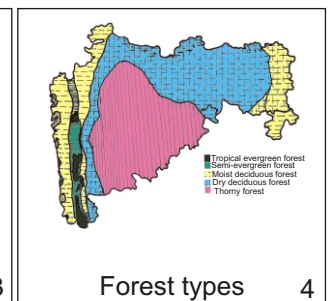
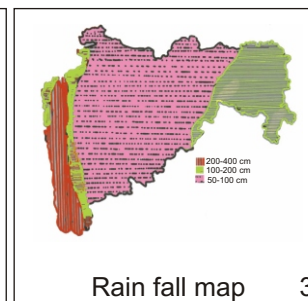
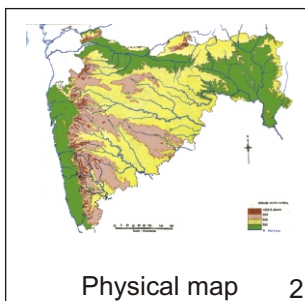
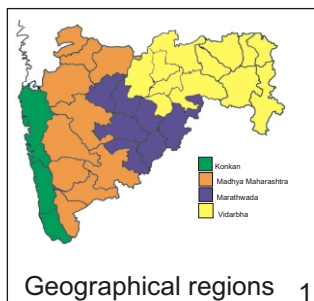
Naoroji Godrej Centre for Plant Research

Tabernaemontana alternifolia L.

Location map



1.Dhule 2.Jalgaon 3. Buldhana 4.Akola 5.Amaravati 6.Wardha 7.Nagpur 8. Bhandara 9. Gadchiroli
10. Chandrapur 11. Yavatmal 12. Nanded 13. Parbhani 14. Jalna 15. Aurangabad 16.Latur
17. Beed 18. Ahmadnagar 19 Nashik 20. Thane 21. Pune 22. Osmanabad 23. Solapur 24.Satara
25. Raigad 26.Sangli 27. Kolhapur 28. Sindhudurg 29. Ratnagiri 30.Mumbai 31.Greater Mumbai.



Distribution in following districts ●

1. Kolhapur, 2. Nasik, 3. Pune, 4. Raigad, 5. Ratnagiri, 6. Satara, 7. Sindhudurg, 8. Thane.

Geographical distribution in Maharashtra:

Latitude (DMS): 19° 58' - 17° 49' N & Longitude (DMS): 72° 58' - 74° E.



Haritarium

Family Code: 27

Species code: 6 -1F

Naoroji Godrej Centre for Plant Research

Tabernaemontana alternifolia L.

References:

Cooke, T. (1904): **The Flora of Presidency of Bombay**. Vol.2: 196. (rep. Ed.1958).

Hooker, J.D. *et al.*(1882):**The flora of British India**. London. Vol.3: 646.

Singh N.P. & S. Karthikeyan (2000):(eds), **Flora of Maharashtra state, Dicotyledones**.Vol. 2: . B.S.I., Calcutta:326.

Tetali, *et al.* (2000): **Endemic Plants of India (A Status Report of Maharashtra State)**. Naoroji Godrej Centre for Plant Research, Shirwal: 31.