



Haritarium

Family Code: 125

Species code: 7 -11A

Naoroji Godrej Centre for Plant Research

Argyreia sericea Dalz. & Gibs.

Botanical name: *Argyreia sericea* Dalz. & Gibs.

Vernacular name: Gavel.

Family : Convolvulaceae

Threatened category: **Low Risk** (Gaikwad & Yadav, 2004).

Key characters: Silky twiners, Leaves strigosely pubescent above, silky beneath, bracts large, parallel nerved, flowers purple, corolla hairy outside, stigma globose, berries orange coloured.

Description: Twiners, large, silky all over. Leaves 6.5-12.5 X 5-10 cm, broadly ovate, strigose above, densely silky beneath, apex acute, base cordate, nerves 8-10 pairs; petioles 2.5-5 cm long, densely silky. Flowers 6-8 in capitate or subcapitate cymes; peduncles 2.5-10 cm long, silky; calyx linear-oblong, densely hairy and ciliate; corolla pink, 5-6 cm long, tubes and bands hairy; filaments hairy at base, anthers sagittate. Berries about 1.5 cm across, orange coloured.

Flowering and fruiting: August - November.

Distribution: India – Endemic to Western peninsula.

Localities: Ahmednagar, Akola, Amaravati, Chandrapur, Dhule, Nagpur, Nasik, Pune, Raigad, Ratnagiri, Wardha.

Ecology: Common in shadey places on gentle hill slopes, preferably disturbed deciduous forests. Altitude ranges between 600-1200m.

Association: No specific association is observed but found growing near large bushes and mango trees.



Haritarium

Family Code: 125

Species code: Z -11B

Naoroji Godrej Centre for Plant Research

***Argyreia sericea* Dalz. & Gibs.**



1.Habit, 2.Flower, 3.Dissected flower,4.& 5.Inflorescence, 6. Leaf dorsal view, 7. Leaf ventral view..



Haritarium

Family Code: 125

Species code: Z -11C

Naoroji Godrej Centre for Plant Research

***Argyreia sericea* Dalz. & Gibs.**





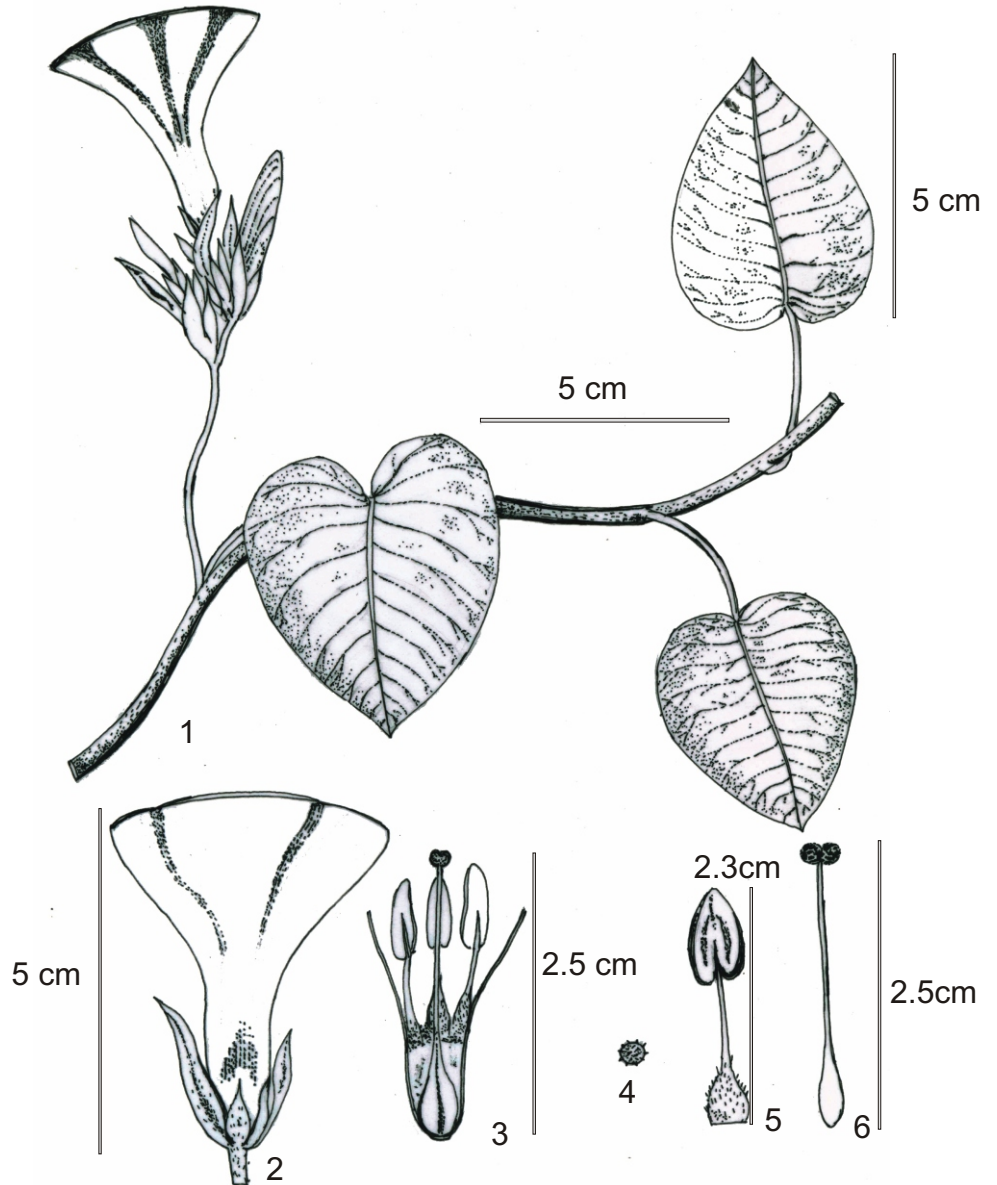
Haritarium

Family Code: 125

Species code: Z-11D

Naoroji Godrej Centre for Plant Research

***Argyreia sericea* Dalz. & Gibs.**



1. Habit, 2. Flower, 3. Anthers and stigma, 4. Seed, 5. Anthers, 6. Stigma



Haritarium

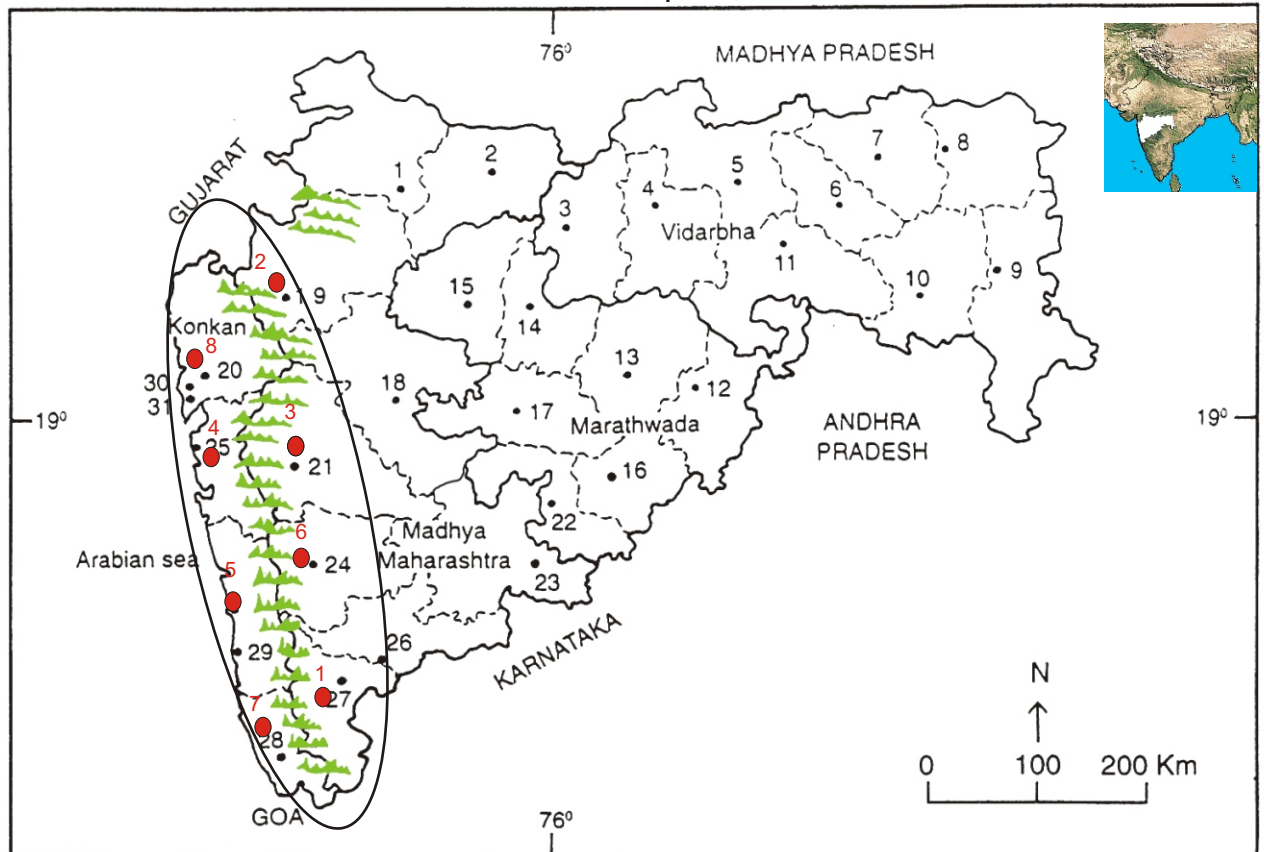
Family Code: 125

Species code: Z -11E

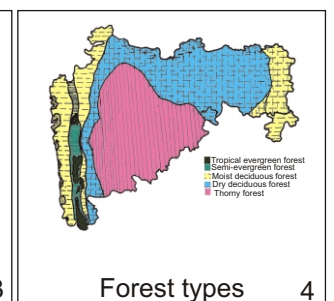
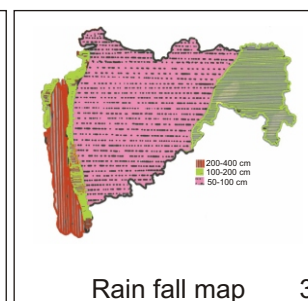
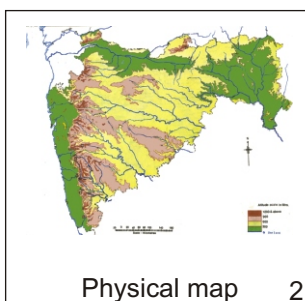
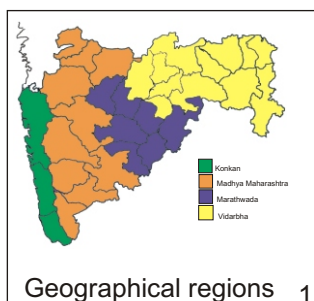
Naoroji Godrej Centre for Plant Research

Argyrea sericea Dalz. & Gibs.

Location map



- 1.Dhule 2.Jalgaon 3. Buldhana 4.Akola 5.Amaravati 6.Wardha 7.Nagpur 8. Bhandara 9. Gadchiroli
 10. Chandrapur 11. Yavatmal 12. Nanded 13. Parbhani 14. Jalna 15. Aurangabad 16.Latur
 17. Beed 18. Ahmadnagar 19 Nashik 20. Thane 21. Pune 22. Osmanabad 23. Solapur 24.Satara
 25. Raigad 26. Sangli 27. Kolhapur 28. Sindhudurg 29. Ratnagiri 30.Mumbai 31.Greater Mumbai.



Distribution in following districts ●

1. Kolhapur, 2. Nasik, 3. Pune, 4. Raigad, 5. Ratnagiri, 6. Satara, 7. Sindhudurg, 8. Thane.

Geographical distribution in Maharashtra:

Latitude (DMS): 19° 58' - 17° 49' N & Longitude (DMS): 72° 58' -74° E.



Haritarium

Family Code: 125

Species code: Z -11F

Naoroji Godrej Centre for Plant Research

Argyreia sericea Dalz. & Gibs.

References:

Cooke. T (1904): **Flora of Presidency of Bombay**. Vol.2: 326 (rep. Ed.1958)

Gaikwad S.P. & S.R. Yadav(2004): in T. Pullaiah (ed.)Endemic flowering plant species of Maharashtra and their possible utilization; **Biodiversity in India**, Regancy publications, New Delhi:45.

Hooker, J.D. *et al.*(1893):**The flora of British India**. London. Vol.4: 188.

Singh N.P. & S. Karthikeyan (2000):(eds), **Flora of Maharashtra state, Dicotyledones**.Vol. 2: . B.S.I., Calcutta: 446.

Tetali, *et al.* (2000): **Endemic Plants of India (A Status Report of Maharashtra State)**. Naoroji Godrej Centre for Plant Research, Shirwal: 35.