

Herb-Lilly-Sedge-Orchid of Mt Gravatt Conservation Reserve

Compiled by Michael Fox

www.megoutlook.wordpress.com/flora-fauna/butterflies/

© 2015 Creative Commons – free use with attribution to Mt Gravatt Environment Group

Acanthaceae
Brunoniella australis
Blue Trumpet



Herb-Lilly-Sedge-Orchid of Mt Gravatt Conservation Reserve

Acanthaceae
Pseuderanthemum
variable
Love Flower

Five mauve/white petals –
dark dots on large fifth petal

Caterpillar food plant for:
Common or Varied Eggfly
Australian Rustic, Leafwing



Acanthaceae
Rostellularia adscendens
Pink Tongues



Orange-streaked Ringlet



Herb-Lilly-Sedge-Orchid of Mt Gravatt Conservation Reserve

Agavaceae
Agave Americana
variegata
Century Plant

WEED!

CAUTION – Hard sharp spikes on end of leaves and barbs along edges.



Anthericaceae
Thysanotus tuberosus
Common Fringe Lily



Herb-Lilly-Sedge-Orchid of Mt Gravatt Conservation Reserve

Anthericaceae
Tricoryne anceps ssp.
Pterocaulon
Yellow Rush Lily

Common in gullies on
southern slopes.



Anthericaceae
Tricoryne elatior
Yellow Rush Lily,
Yellow Autumn Lilly



Herb-Lilly-Sedge-Orchid of Mt Gravatt Conservation Reserve

Apiaceae
Centella asiatica
Indian Pennywort,
Gotu Cola

Similar to *Dichondra repens*
Kidney Weed. *Centella asiatica* leaves have rippled edge and leaf does not wrap around a much as *Dichondra*.

Bushtucker: Leaves eaten as vegetable. Leaves contain asiaticoside: helpful for arthritis, skin disease, fevers and sore throats. Aborigines soaked flowers to make a syrup to drink for sore throats and colds.



Apocynaceae
Catharanthus roseus
Pink Periwinkle

WEED!



Herb-Lilly-Sedge-Orchid of Mt Gravatt Conservation Reserve

Araceae
Gymnostachys anceps
Settlers Flax



Herb-Lilly-Sedge-Orchid of Mt Gravatt Conservation Reserve

Asclepiadaceae
Asclepias curassavica
Red-headed Cotton Bush

WEED!

Caterpillar food plant:
Monarch butterfly



Monarch caterpillar and aphids



Herb-Lilly-Sedge-Orchid of Mt Gravatt Conservation Reserve

Asparagaceae
Asparagus aethiopicus
Asparagus Fern

WEED!

Remove underground crown
or plant will regrow.

Roots and leaves without
seeds can be composted on-
site.

Video available
Using 2-Prong Hoe to
remove.



(left) Flower

(right) Young Asparagus Fern



Herb-Lilly-Sedge-Orchid of Mt Gravatt Conservation Reserve

Asteraceae
Ageratum houstonianum
Blue Billygoat Weed

WEED!

Native of Mexico

Thick coverage of large areas.
Spreads by branches rooting
when touching ground and
seeds spread by wind and
water.



Asteraceae
Bidens bipinnata
Large Flowering
Cobblers Peg,
Beggar's Ticks

WEED!



Herb-Lilly-Sedge-Orchid of Mt Gravatt Conservation Reserve

Asteraceae
Bidens pilosa
Cobblers Peg

WEED!

Pull up before seeds form to
break the cycle of
regeneration and spreading.



Herb-Lilly-Sedge-Orchid of Mt Gravatt Conservation Reserve

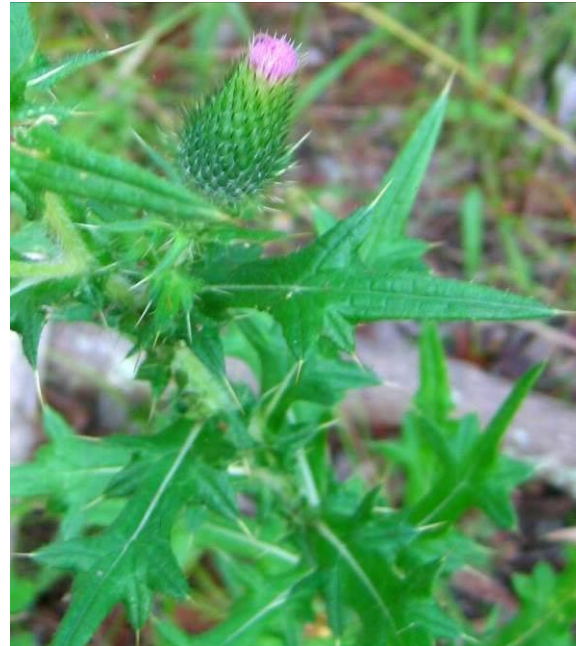
Asteraceae
Calyptocarpus vialis
Creeping Cinderella
Weed

WEED!



Asteraceae
Cirsium vulgare
Scotch Thistle

WEED!



Herb-Lilly-Sedge-Orchid of Mt Gravatt Conservation Reserve

Asteraceae
Cyanthillium cinereum
Vernonia,
Purple Fleabane



Asteraceae
Gnaphalium Americanum
Cudweed

WEED!



Herb-Lilly-Sedge-Orchid of Mt Gravatt Conservation Reserve

Asteraceae
Hypochoeris radicata
Flatweed, Catsears

WEED!

Resembles Dandelion
(*Taraxacum officinale*)
Flat weed has branching
flower stems.



Asteraceae
Olearia elliptica
Daisy



Herb-Lilly-Sedge-Orchid of Mt Gravatt Conservation Reserve

Asteraceae
Olearia nernstii
Snow Bush



Herb-Lilly-Sedge-Orchid of Mt Gravatt Conservation Reserve

Asteraceae
Senecio angulatus or
tamoides
Climbing Groundsel,
Cape Ivy

WEED!

Scrambles over trees



Herb-Lilly-Sedge-Orchid of Mt Gravatt Conservation Reserve

Asteraceae
Senecio
madagascariensis
Fireweed

WEED!

Caterpillar food plant:
Magpie Moth



Asteraceae
Sigesbeckia orientalis
St. Paul's Wort, Indian
weed

WEED!



Herb-Lilly-Sedge-Orchid of Mt Gravatt Conservation Reserve

Asteraceae
Stemmacantha australis
Native Thistle

Vulnerable



Asteraceae
Tagetes minuta
Stinking Roger

WEED!



Herb-Lilly-Sedge-Orchid of Mt Gravatt Conservation Reserve

Asteraceae
Tridax procumbens
Tridax Daisy

WEED!



Herb-Lilly-Sedge-Orchid of Mt Gravatt Conservation Reserve

Asteraceae
Youngia japonica
Native Hawksbeard



Herb-Lilly-Sedge-Orchid of Mt Gravatt Conservation Reserve

Brassicaceae
Lepidium africanum
Common Peppergrass,
Garden-cress

WEED!

Caterpillar food plant:
Cabbage White



Campanulaceae
Lobelia gibbosa
Tall Lobelia



Herb-Lilly-Sedge-Orchid of Mt Gravatt Conservation Reserve

Campanulaceae
Lobelia purpurascens
White Root



Campanulaceae
Wahlenbergia gracilis
Small Flowered Bluebell

Common in suburban lawns



Herb-Lilly-Sedge-Orchid of Mt Gravatt Conservation Reserve

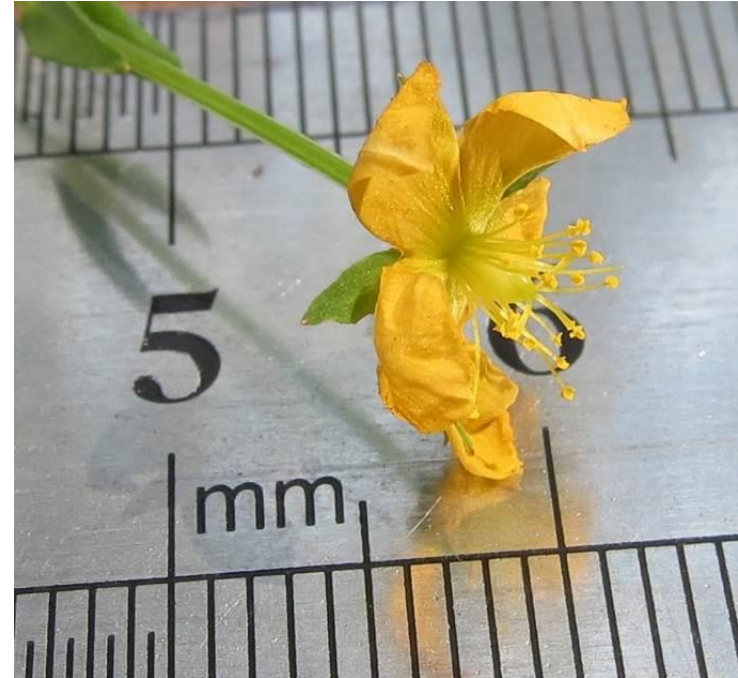
Caryophyllaceae
Drymaria cordata
Tropical Chickweed,
Heartleaf, Drymary

WEED!



Herb-Lilly-Sedge-Orchid of Mt Gravatt Conservation Reserve

Clusiaceae
Hypericum gramineum
Small St. John's Wort



Herb-Lilly-Sedge-Orchid of Mt Gravatt Conservation Reserve

Colchicaceae
Gloriosa superba
Glory Lily

WEED!

Highly invasive weed – garden escapee



Unique hooks on tips of leaves allows to climb over and smother native vegetation.

Thick white perennial tubers allow this invasive weed to spread long distances from gardens into bushland.



Herb-Lilly-Sedge-Orchid of Mt Gravatt Conservation Reserve

Commelinaceae
Callisia fragrans
Purple Succulent,
Inch Plant

WEED!

Must be removed from site –
will root if left on damp ground.
Can be composted.

Causes skin problems in dogs.



Commelinaceae
Callisia repens
Creeping Inch Plant

WEED!

Must be removed from site –
will root if left on damp ground.
Can be composted.

Causes skin problems in dogs.



Herb-Lilly-Sedge-Orchid of Mt Gravatt Conservation Reserve

Commelinaceae
Murdannia graminea
Slug Herb,
Pink Swamp Lily

Pink to mauve flowers



Crassulaceae
Bryophyllum pinnatum
Live Plant,
Resurrection Plant

WEED!



Herb-Lilly-Sedge-Orchid of Mt Gravatt Conservation Reserve

Crassulaceae
Bryophyllum tubiflorum
Mother-of-millions

WEED!

Remove carefully and immediately put in plastic bag - dump. Leaves break off easily and one leaf can produce multiple new plants.



Herb-Lilly-Sedge-Orchid of Mt Gravatt Conservation Reserve

Cyperaceae
Carex appressa
Tall Sedge

Distinctive spiral flower.



Leaf: triangular cross section.



Herb-Lilly-Sedge-Orchid of Mt Gravatt Conservation Reserve

Cyperaceae
Cyperus bowmanii
No common name found

Flower stem has very defined triangular shape.

Normally found on edges of freshwater swamps and along creek banks.



Cyperaceae
Cyperus cyperoides
Sedge



Herb-Lilly-Sedge-Orchid of Mt Gravatt Conservation Reserve

Cyperaceae
Cyperus iria
Rice Sedge



Herb-Lilly-Sedge-Orchid of Mt Gravatt Conservation Reserve

Cyperaceae
Cyperus difformis
Small-Flowered nutsedge



Cyperaceae
Cyperus gracilis
Slender Flat-sedge
Wisker Grass



Herb-Lilly-Sedge-Orchid of Mt Gravatt Conservation Reserve

Cyperaceae
Cyperus rotundus
Nutgrass

WEED!



Cyperaceae
Fimbristylis dichotoma
Common Fringe-sedge



Herb-Lilly-Sedge-Orchid of Mt Gravatt Conservation Reserve

Cyperaceae
Gahnia aspera
Sword Sedge/Saw
Sedge

Food plant – caterpillars of
[Spotted Sedge-skipper](#)
Flame and Varied Sedge-
Skippers and Green Darter
butterflies.



Herb-Lilly-Sedge-Orchid of Mt Gravatt Conservation Reserve

Cyperaceae
Lepidosperma laterale
 v laterale
Variable Swardsedge



Herb-Lilly-Sedge-Orchid of Mt Gravatt Conservation Reserve

Cyperaceae
Scleria mackaviensis
Tufted Scleria



Herb-Lilly-Sedge-Orchid of Mt Gravatt Conservation Reserve

Dracaenaceae
Sansevieria trifasciata
Mother-in-law's Tongue

WEED!



Euphorbiaceae
Euphorbia cyathophora
Painted Spurge

WEED!



Herb-Lilly-Sedge-Orchid of Mt Gravatt Conservation Reserve

Fabaceae
Vicia sativa subsp. *Nigra*
Narrow-leaved Vetch

WEED!



Distinctive tendrils



Geraniaceae
Geranium solanderi
Native Geranium,
Australian Cranesbill,
Native Carrot



Herb-Lilly-Sedge-Orchid of Mt Gravatt Conservation Reserve

Goodeniaceae
Goodenia hederacea
Ivy Fan Flower



Goodeniaceae
Goodenia rotundifolia
Star Goodenia

Food plant for larva of
[Meadow Argus](#) butterfly



Meadow Argus



Herb-Lilly-Sedge-Orchid of Mt Gravatt Conservation Reserve

Hemerocallidaceae
Dianella
brevipedunculata

Poisonous berries – liver
toxin



Hemerocallidaceae
Dianella caerulea
Blueberry Lily, Blue Flax-
lily

Food plant:
Lewin's Honeyeater

Poisonous berries – liver
toxin



Herb-Lilly-Sedge-Orchid of Mt Gravatt Conservation Reserve

Hemerocallidaceae
Dianella longifolia
Blueberry Lily, Blue Flax-
lily

Poisonous berries – liver
toxin



Base of young plants
burgundy colour

Distinctive toothed edges and
mid-rib on leaves



Herb-Lilly-Sedge-Orchid of Mt Gravatt Conservation Reserve

Hypoxidaceae
Curculigo ensifolia
No common name

Yellow flower



Herb-Lilly-Sedge-Orchid of Mt Gravatt Conservation Reserve

Juncaceae
Juncus usitatus
Common Rush



Herb-Lilly-Sedge-Orchid of Mt Gravatt Conservation Reserve

Lamiaceae
Leonotis nepetifolia
Lion's Tail

WEED!



Herb-Lilly-Sedge-Orchid of Mt Gravatt Conservation Reserve

Lamiaceae
Mentha diemenica
Native Mint



Lamiaceae
Plectranthus parviflorus
Cockspur Flower

Similar to
Plectranthus verticillatus
Creeping Charlie.
Leaves hairy.



Herb-Lilly-Sedge-Orchid of Mt Gravatt Conservation Reserve

Lamiaceae
Plectranthus verticillatus
Creeping Charlie

WEED!

Similar to
Plectranthus parviflorus
Cockspur Flower.
Leaves glossy and smooth.

Native of South East Africa

Remove all pieces of plant –
will strike from leaves dropped
on ground.



Laxmanniaceae
Cordyline rubra
Palm-lily



Herb-Lilly-Sedge-Orchid of Mt Gravatt Conservation Reserve

Laxmanniaceae
Lomandra filiformis
Wattle Mat-rush

Male plant

Larva food plant for:
Splendid Ochre/Symmomus
Skipper, Common White-spot
Skipper butterfly



Lichen Moth - *Asura lydia*



Laxmanniaceae
Lomandra filiformis
Wattle Mat-rush

Female

Food plant for larva of
Common White-spot Skipper
butterfly



Herb-Lilly-Sedge-Orchid of Mt Gravatt Conservation Reserve

Laxmanniaceae
Lomandra hystrix
Creek Mat-rush, Green
Mat-rush

Caterpillar food plant:
Brown Ochre,
Splendid Ochre/*Symmomus*
Skipper butterflies



Laxmanniaceae
Lomandra laxa
Stemmed Mat-rush



Herb-Lilly-Sedge-Orchid of Mt Gravatt Conservation Reserve

Laxmanniaceae
Lomandra longifolia
Spiny Headed Mat-rush

Caterpillar food plant:
Brown Ochre,
Splendid Ochre
Symmopus Skipper
Common White-spot Skipper

Identified by and spiky fruit.



Distinctive leaf tip



Herb-Lilly-Sedge-Orchid of Mt Gravatt Conservation Reserve

Laxmanniaceae
Lomandra multiflora
Many Flowered Mat-rush

Male flower

Caterpillar food plant:
Brown Ochre,
Heath Ochre
Black-ringed Ochre
Orange Ochre butterflies.

Identified by distinctive leaf tip
and mass of flowers.



Herb-Lilly-Sedge-Orchid of Mt Gravatt Conservation Reserve

Malvaceae
Malvastrum
coromandelianum
Prickly Malvastrum

WEED!

Similar to *Sida rhombifolia*
Leaves glossy and hairy
Single relatively deep tap root
- pull up when ground damp.



Malvaceae
Modiola caroliniana
Red Flowered Mallow

WEED!



Herb-Lilly-Sedge-Orchid of Mt Gravatt Conservation Reserve

Malvaceae
Sida cordifolia
Flannel Weed

WEED!



Malvaceae
Sida rhombifolia
Paddy's Lucerne

WEED!

Similar to *Malvastrum coromandelianum*
Leaves dull (flat) green

Single relatively deep tap root
-example tap root almost
same size as plant. Pull up
when ground damp.



Herb-Lilly-Sedge-Orchid of Mt Gravatt Conservation Reserve

Myoporaceae
Eremophila debilis
Winter Apple



Ophiolossaceae
Ophioglossum reticulatum
No common name found



Herb-Lilly-Sedge-Orchid of Mt Gravatt Conservation Reserve

Orchidaceae
Dipodium variegatum
Slender Hyacinth Orchid

Leafless terrestrial orchid



Orchidaceae
Geodorum densiflorum
Shepherd's Crook Orchid
Pink Nodding Orchid

Flowers and seed pods



Herb-Lilly-Sedge-Orchid of Mt Gravatt Conservation Reserve

Oxalidaceae
Oxalis corniculata
Creeping Oxalis



Leaves hairy



Phyllanthaceae
Phyllanthus virgatus
Twiggy Phyllanthus



Herb-Lilly-Sedge-Orchid of Mt Gravatt Conservation Reserve

Plantaginaceae
Plantago debilis
No Common Name



Plantaginaceae
Plantago lanceolata
Lamb's Tongues,
Plantain

WEED!



Herb-Lilly-Sedge-Orchid of Mt Gravatt Conservation Reserve

Polygonaceae
Persicaria capitata
Japanese Knotweed

WEED!

Do not compost.
Bag and remove from
site.



Polygonaceae
Persicaria strigosa
Prickly Smartweed



Herb-Lilly-Sedge-Orchid of Mt Gravatt Conservation Reserve

Portulacaceae
Portulaca oleracea
Pigweed, Munyeroo,
Purslane

Caterpillar food plant:
Achaea argilla



Rubiaceae
Richardia brasiliensis
White Eye,
Mexican Clover

WEED!



Herb-Lilly-Sedge-Orchid of Mt Gravatt Conservation Reserve

Rubiaceae
Richardia stellaris
Richardia

WEED!

Native of South America



Scrophulariaceae
Atranema fimbriatum
Koala Bells



Herb-Lilly-Sedge-Orchid of Mt Gravatt Conservation Reserve

Solanaceae
Solanum americanum
Glossy Nightshade

WEED!



Solanaceae
Solanum mauritianum
Wild Tobacco

WEED!



Herb-Lilly-Sedge-Orchid of Mt Gravatt Conservation Reserve

Verbenaceae
Stachytarpheta
cayennensis
Snakeweed

WEED!



Herb-Lilly-Sedge-Orchid of Mt Gravatt Conservation Reserve

Verbenaceae
Verbena rigida
Veined Verbena

WEED!



Herb-Lilly-Sedge-Orchid of Mt Gravatt Conservation Reserve

Violaceae
Hybanthus stellarioides
Spade Flower

Caterpillar food plant:
Glasswing butterfly



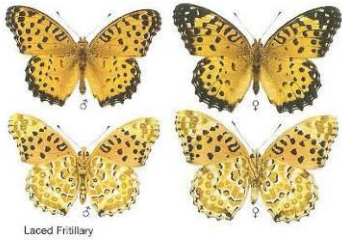
Violaceae
Viola banksii
Ivy-leaf Violet



Herb-Lilly-Sedge-Orchid of Mt Gravatt Conservation Reserve

Violaceae
Viola betonicifolia
Arrow-leaved Violet
(Introduced)

Caterpillar food plant for
endangered Australian
Fritillary butterfly.



Laced Fritillary

Butterflies of Australia – Michael F
Braby



Herb-Lilly-Sedge-Orchid of Mt Gravatt Conservation Reserve

Zingiberaceae
Alpinia caerulea
Native Ginger



Herb-Lilly-Sedge-Orchid of Mt Gravatt Conservation Reserve

Zingiberaceae
Alpinia zerumbet
Shell Ginger

WEED!

Native of South-East Asia

