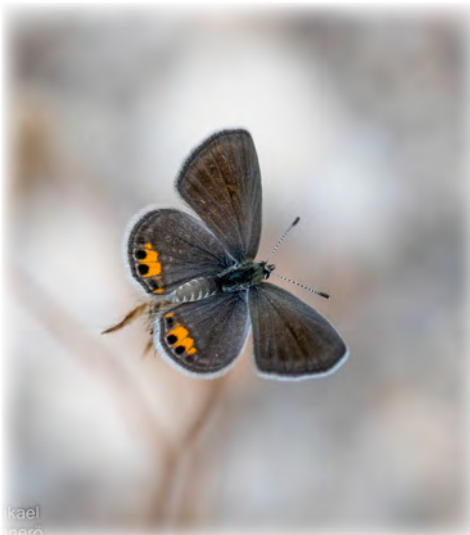




Butterflies of Greece

15th - 22nd June 2022

Led by Alice Hunter & Simon Spencer



Greenwings Wildlife Holidays

Tel: 01473 254658

Web: www.greenwings.co.uk

Email: enquiries@greenwings.co.uk

Butterflies of Greece
15th - 22nd June 2022
Led by Simon Spencer and Alice Hunter

Day 1

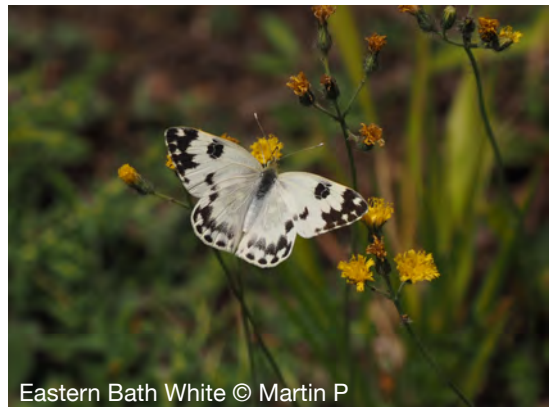
Having arrived a day early Simon, Anne and Alice collected vehicles ahead of the group's arrival and were there to meet them in Athens airport when they landed. Unfortunately one of the flights was delayed but the rest of the group were content to get some lunch while they waited and we were soon on the way.

We made a stop at a service station on the way out of Athens to fill up with fuel and several people took the opportunity to have an ice cream. Those that didn't partake were soon wandering the car park in search of insect life and in no time, Martin and Matt had located a Cicada, one of many buzzing from the trees. A White fluttered past but we didn't establish which one as we were climbing back into the vehicles for the remainder of the journey to Delphi.

We arrived a little later than planned and so only had time for a short rest before our introductory talk and the walk down into the town for dinner. Swifts, Swallows and House Martins swooped overhead as we ate on the balcony of a restaurant and chatted amiably about what we might see during the coming week.

Day 2

Rested and eager to get out in the field we made a good start this morning and headed up the mountain. We paused in Arachova to buy water and the group ambled out over a grassy slope beside the supermarket where the first butterflies spotted included both Chapman's and Common Blues, Meadow Brown and Eastern Bath White. Adrian noted Persian Skipper while Wilf spotted a Mallow Skipper. We continued in anticipation of more lovely things to come.



Eastern Bath White © Martin P



Ilex Hairstreak © Mikael R

Our next stop was at the top of the Arachova Pass. A Balkan Marbled White fluttered just outside the vehicles as we pulled up and Alice noted that the area was looking particularly flowery this year, there must have been recent rain. Among the flowers found here were *Onobrychis ebenoides*, *Acinos alpinus*, *Scrophularia canina* ssp. *bicolor*, *Pterocephalus pterocephala*, *Asyneuma limonifolium* and *Campanula topaliana* ssp. *delphica*. There were some interesting insects too including Transparent Burnet moth, an attractive red and black longhorn beetle found by Matt and several chunky endemic Parnassos Stone

Grasshoppers which blended in with their gravelly habitat exceedingly well until they moved. Venturing down the slope on a rough track a short way, the group were also able to locate some more butterflies including Ilex Hairstreak, Brown Argus and Common Blue.

We moved on to the next stop where there was a scrubby slope on one side of the road and a rough meadow on the other - but sadly no Danewort on the roadside as in previous years. Undeterred we scrambled up the bank first to see what we could find. A single orchid was the first find, a Red Helleborine seeming to glow from the shade beneath a Grecian Fir. Nearby the Two-flowered Everlasting Pea, *Lathyrus grandiflorus*, was in good flower and birds including Blackbird, Coal Tit, Chaffinch and Cuckoo were singing.

Simon then called from the meadow below the road and we made our way down to find him. On the way we found several Brown Argus, an attractive green Forester Moth and several clumps of a pretty pinkish-red flower, *Dianthus biflorus*. On joining Simon we were treated to good views of

Eros and Adonis Blues, Mikael found the first Queen of Spain Fritillary, Richard found an Idas Blue while both Small Skipper and Painted Lady were on the wing along with Spotted Fritillary and a Helice form female Clouded Yellow. Wilf found some more specimens of Red Helleborine and nearby several spikes of Dark Red Helleborine were in tight bud. Alice found a mating pair of Six-Spot Burnet moths before we returned to the vehicles.



Mistletoe Clearwing © Alice Hunter

Our next stop was only a short hop down the road. The meadow had unfortunately been fenced so we couldn't get access to the part we wanted but there was a patch of Danewort here which yielded a mass of Rose Chafers, a Hornet Hoverfly and a number of Mistletoe Clearwing moths. A very fresh Amanda's Blue posed obligingly for photos and on the verge below the new fence Brown Argus and Silver-studded Blue were recorded.

We retraced our steps back to another Danewort patch a little way up the road and although that yielded little, a small flower patch with more *Asyneuma limonifolia* and several Woad plants was more productive allowing us to add a very nicely marked female Small Copper with blue spots on the hindwing (*caeruleopunctata*) and Wall Brown.

From here we made our way further up the mountain to our lunch spot, a flowery meadow in a forest glade where we'd spend a happy couple of hours wandering while we ate and steadily adding to our species list. Robin and Song Thrush were singing from the woods and a Green Woodpecker was heard calling nearby. The meadow was buzzing with crickets and grasshoppers, the high-pitched chirp of the Field Cricket was particularly distinct until somebody got too close to a burrow when the song paused momentarily.

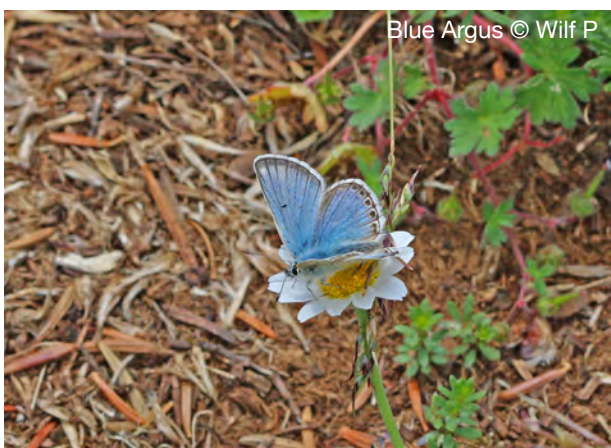
The meadow had a wealth of lovely flowers including Tassel Hyacinth, Wild Basil, *Campanula spatulata* ssp. *sprunerana*, Tufted Vetch and Hare's Foot Clover. The butterflies were making the most of the nectar and we had species ranging from Sooty Copper and Turquoise Blue to Orange Tip and Persian Skipper. Helen spotted a Holly Blue perched in the Grecian Fir tree by the bus and Richard found Clouded Apollo fluttering among the vetch patches. Broad-bordered Bee Hawkmoth and Hummingbird Hawkmoth joined Silver Y nectaring too.



Persian Skipper © Mikael R

© Mikael

Having eaten we headed on up the mountain towards the ski centre. We stopped near the top for a wander in an open patch where Serin were singing from the trees around us and a Raven flew overhead as we explored. We soon found more delights, both floral and lepidopteran. Hummocks

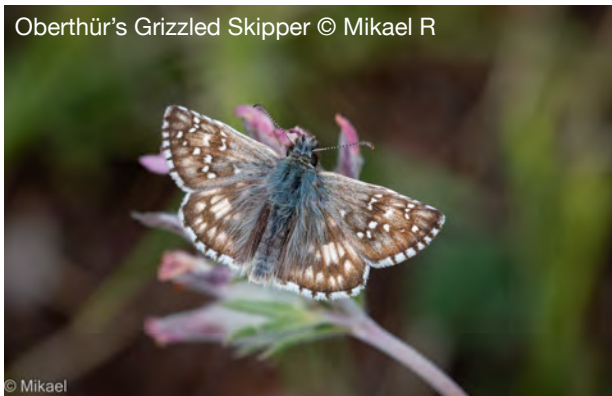


Blue Argus © Wilf P

of *Astragalus angustifolius* and *Daphne oleoides* were interspersed with *Lamium garganicum* and Feathergrass. A Small Tortoiseshell was nectaring and a Painted Lady zipped overhead, caught by the breeze. There was a call from Matt, who was down in a gully on the other side of the road, that he had found a pair of mating Clouded Apollo. We scrambled down to join him, noting a lovely patch of dark pink *Geranium subcaulescens* nearby. Meanwhile, Wilf found a Blue Argus and Martin found Mountain Argus.

Moving on, we drove to the ski centre itself. Unfortunately the road higher had been roped off

and with the weather starting to look as though a storm was coming in, and the wind picking up, we decided not to stop. We did however spot a Northern Wheatear beside the road before retracing our steps downhill.



Oberthür's Grizzled Skipper © Mikael R

© Mikael

We stopped instead in a small flowery glade which was sheltered from the wind, and were graced with a little sunshine and, for a small area, quite a number of butterflies. These included Mazarine Blue, Wood White, Oberthür's Grizzled Skipper and a Mountain Small White found by Martin. Wilf also found some White Helleborines while Alice spotted the caterpillar of a Mullein moth on a leaf of *Verbascum speciosum*.

We made one final stop on the way down the mountain at the lower end of our lunch meadow where a scrubby meadow yielded Queen of Spain,

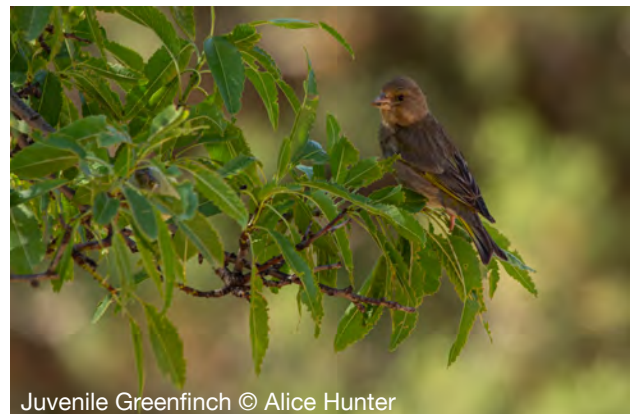
Idas Blue, Large Tortoiseshell and a Red Admiral. Alice picked out flowers like Hairy Rupturewort and Large Pheasant's Eye plus a Churchyard Beetle in the genus *Blaps*, and all the while Goldcrest and Coal Tits called in the fir trees around us.

Returning to Delphi, we totted up our finds for the day - 45 species of butterfly so far! We had another pleasant evening meal before retiring for the evening.

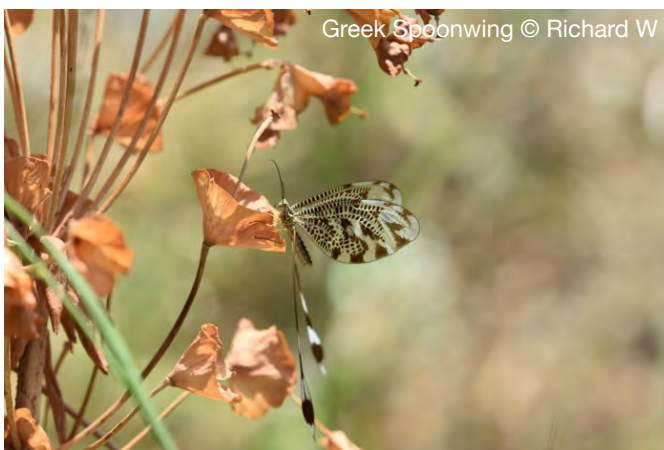
Day 3

The day began with some of the group catching sight of a Golden Oriole near the hotel before we set out for the ruins of Ancient Delphi. In the trees beside the path to the entrance, a Lattice Brown fluttered from trunk to trunk and Wilf spotted a Kotschy's Gecko. Having convened inside the gate we set a time to meet again and dispersed across the site.

A Rock Nuthatch called loudly from one of the walls as we crossed the Agora and Alice pointed out *Asphodelus fistulosus* flowering as we climbed the first steps. A Balkan Grayling was one of the first butterfly sightings near the fabled Omphalos and, having stopped to photograph it, we looked up to see a Black-eared Wheatear sitting nearby. Climbing steadily we continued to find more with Mallow Skipper added swiftly and then Wall Brown near the Temple of Apollo. A juvenile Greenfinch was feeding in a fruit tree near the path above the Amphitheatre while Swallows hawked for insects at head height. Meanwhile, Matt had found a female Ladybird Spider to photograph and Goran spotted a Southern Comma.



Juvenile Greenfinch © Alice Hunter



Greek Spoonwing © Richard W

Further up, we paused at the spring to watch dragonflies darting after one another. Michael correctly identified them as male Keeled Skimmers though they somehow seemed more vibrantly blue in the Greek sunshine than those at home. Continuing our climb, we finally reached the stadium at the top of the site and paused for photos before retracing our steps. On the way back we spotted a Thread-winged Lacewing which posed nicely for us and Richard saw a Hoopoe fly over.

We reconvened near the entrance and, on the way out, Martin spotted a Southern White

Admiral land in a nearby Mulberry tree. A few of the group found some Golden Digger Wasps busy excavating their nest chambers in the middle of the path on the way back to the buses, and

paused to photograph their efforts. We picked up our lunches from the vehicles and walked on a short way to a shady spring to eat them. Some Greek Marbled Bush-cricket, a mantis nymph and various other small finds in one of the fig trees above our heads proved a welcome distraction before we moved on.



Greek Marbled Bush-cricket © Wilf P

Our afternoon was to be spent in a meadow on the higher slopes of Parnassos and so we made our way back up the mountain and parked up. We kept a clear berth around some beehives near the entrance and wandered along the track, soon finding some lovely species to add to our list including a Large Tortoiseshell spotted by Martin and the first of several Nettle Tree butterflies which Simon alerted the group to. There were a few damp puddles and patches of wet gravel along the track and at various points we found a number of species making the most of these moist conditions. Adonis Blue seemed to be the most frequent puddling butterfly but Queen of Spain and Brown Argus joined them, among others. White Helleborines flowered in the shade of the Fir trees along the track edge while Chiffchaff, Blackcap, Song Thrush and Goldcrest sang from the depths of the woods.



Greek Clouded Yellow © Martin P

We eventually reached a small chapel on the edge of the forest and having admired the tranquil setting, we wandered down into the meadow spanning the valley to make our return to the vehicles. We commented on the darker, orange appearance of some Clouded Yellows here and on later inspection of Martin's photographs they turned out to have been Greek Clouded Yellow. He had also photographed Black-veined Whites and we found a couple as we meandered back through the meadow along with a Glanville Fritillary or two, found by Mikael in the dry stream bed that ran down the middle of the valley.

In the damper patches of the meadow, Gladiolus flowered in profusion and Red-rumped Swallows hawked for insects overhead. Nearing the vehicles once more, a Lesser Fiery Copper was found and photographed. Wilf and Julia told us they had something we might like to see whereupon Julia opened her small shoulder bag and produced the most beautiful beetle, the Forest Caterpillar Hunter, a carabid with iridescent bronzy green elytra and a black head. Matt meanwhile was looking under rocks and soon found a small Scorpion and then a juvenile Greek Slowworm. Sharp-eyed Wilf also spotted a Balkan Green Lizard scuttling into the undergrowth and a couple of Wall Lizards watching us from atop the crumbling wall of a derelict building nearby.



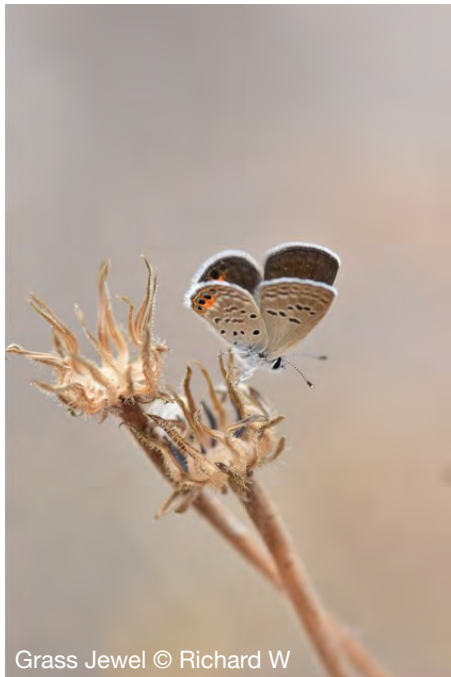
Forest Caterpillar Hunter © Alice Hunter

We headed back down the mountain a happy group after a very fruitful day and enjoyed a final evening meal in Delphi with swifts and, later, bats swooping over our heads after the moths that came to the restaurant lights.

Day 4

Another bright and sunny morning saw us pack up the buses after breakfast in preparation for our transfer to Kalavryta. We bid farewell to Alexandra and Ioanna, thanking them for their hospitality, and set off towards the coast at Itea. We had a stop to make on the way though, and it wasn't far down the road - a few minutes out of town we were parking.

We had made this stop with one particular butterfly in mind, Europe's smallest, the Grass Jewel. The prime site for them was a short walk away and so we had time to admire some other species on the way including Eastern Bath White, Wall Brown and a new record for the trip, Lesser



Grass Jewel © Richard W

Spotted Fritillary. Helen found a lovely Blue-spot Hairstreak and several of the group tried to photograph a large Antlion mostly without success as it proved very flighty. There were some attractive black and red Longhorn beetles of two different species in the *Purpuricenus* genus, and a Freyer's Grayling proved tricky to spot being well camouflaged against its surroundings beneath a pine tree.

Eventually, we reached the spot for the Grass Jewel and Alice pointed out half a dozen or so, low flying and caught by the slightest breeze, among the clumps of *Thymra capitata*, where they perched and proved excellent photographic subjects. Our target seen and enjoyed by all, we meandered back to the vehicles for the onward journey noting Scarce Swallowtail, Balkan Marbled White and Brown Argus on our way.

We paused on the edge of Itea to fill up with fuel and those in Alice's bus were keen-eyed in spotting another new species for the trip in the petrol station! A Geranium Bronze was fluttering between the planters here.

Our next stop on the way was the small harbour town of Galaxidi, a charming spot for some lunch. While Alice went to organise the meal, the group set out up a small hill the other side of the harbour to explore. There weren't vast numbers of butterflies up here but the few that were found posed nicely and gave us good views. Alice soon caught up and we spent a happy half hour wandering among Rosemary and Thyme bushes after Freyer's Grayling, Wall Brown, Sloe Hairstreak and Scarce Swallowtail. John also found a lovely Kotschy's Gecko on a tree trunk and Alice pointed out Rosemary beetles on their host plant.

We enjoyed a delicious lunch in a small restaurant overlooking the harbour before climbing back in the buses for the longest leg of the journey which would take us over the Rio Antirrio suspension bridge at the far end of the Gulf of Corinth. A brief comfort stop on the far side saw us fuelled up with coffees and ready for the last stop of the day.

We made our way up into the mountains from Diakopto and stopped at a small area which had previously been a meadow and wet flush. To Alice's surprise on pulling up, a building that looked perhaps to be some sort of water pumping station had been erected since her last visit. Nevertheless, the majority of the habitat was relatively unspoilt and we stepped out to explore the area.

In a patch of brambles above the vehicles we found a host of Hairstreaks with White Letter and Ilex nectaring together. Holly Blue fluttered overhead and Southern White Admiral joined Silver-washed Fritillary in sailing round the tree tops. A Turquoise Blue was found in the grassier patch along with Adonis Blue, Long-tailed Blue, Lang's Short-tailed Blue and Pygmy Skipper. Mikael found a Southern Comma and, up a steep bank, Goran, Richard and Phil came across a mass of butterflies on a sap run including Large Tortoiseshell, Lattice Brown and Freyer's Grayling with some Speckled Wood fluttering in to join the party every now and then too.

We finally tore ourselves away from what had been an excellent site despite the new



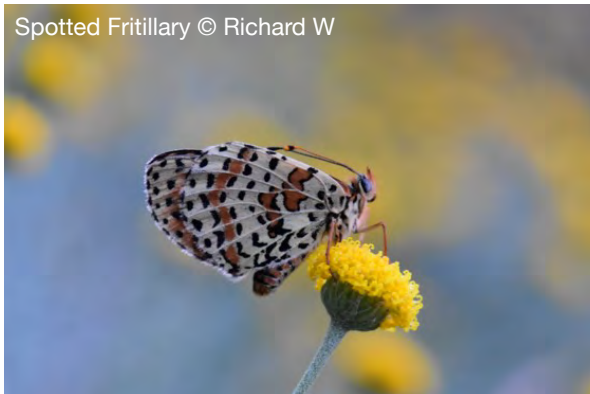
© Alice Hunter

building and made the final part of the journey to Kalavryta and our hotel. Having checked in, we ventured out for dinner at Spitiko where we enjoyed more delicious Greek fare.

Day 5

A few of the group had asked whether it might be possible to do an early morning outing to photograph roosting butterflies and so, an intrepid group gathered a little earlier than required to set out up the hill towards the war memorial. We soon discovered that the sun rises later and more quickly here than at home, but our walk in the dark proved interesting in its own way as Martin and Matt searched for scorpions with a UV torch, which showed how some lichens fluoresce under UV light too.

Reaching the memorial, we found the floodlighting against the walls provided us with an

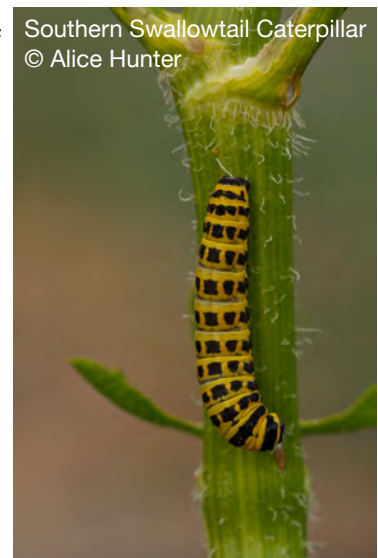


Spotted Fritillary © Richard W

impromptu moth trap. There were masses of the Yellow Underwing type moths we had been seeing all week in the evenings and some Box Tree moths as well as a few others. We watched the light creep over the landscape below us and soon found what we had come for, roosting butterflies. The first was a Spotted Fritillary, found by Alice in one of the flower beds but others soon followed with Common, Long-tailed and Anomalous Blues plus Brown

Argus and Small Skipper. The dawn chorus was enjoyed too with Serin, Song Thrush, Hoopoe and Long-tailed Tit among those noted.

As we gathered to walk back down the hill for breakfast, Red-rumped Swallows swooped low overhead to feast on the last remaining moths on the memorial walls. We made one last discovery on our return journey, a Swallowtail caterpillar feasting on a patch of *Opopanax hispidus* which Alice has since identified as that of a Southern Swallowtail (*P. machaon* has not been reported to use this food plant and has slightly different markings).



Southern Swallowtail Caterpillar © Alice Hunter

Having filled in the rest of the group with the details of our excursion over breakfast, we set out for the day and headed off up the mountain, stopping first at a small meadow beside the road. It was a little cool and so there weren't many butterflies on the wing but those that we did find were mostly very obliging. Silver-studded and Turquoise Blues were joined by Black-veined White and proved excellent photographic subjects. A Large Tortoiseshell made a fleeting appearance and a Painted Lady flew through as Wren and Goldcrest sang from the trees around us. White Helleborine and Everlasting Pea flowered in the shadier edges of the glade and Matt found a stunning Longhorn Beetle and Alice came across a roosting Long-horned Bee nearby.



Morimus asper © Alice Hunter

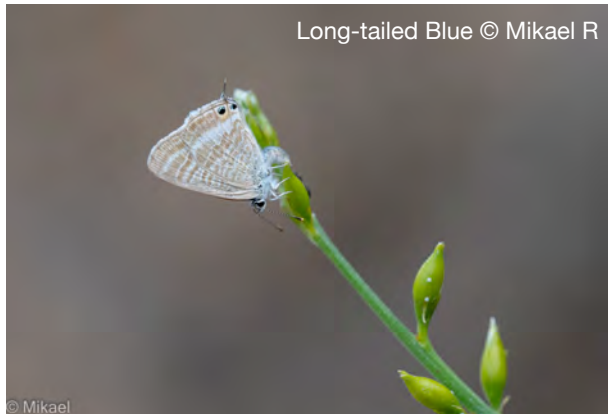
Moving on uphill, we drove over the plateau near the ski centre where Red-backed Shrike and Wheatears were spotted, but decided it was too cool and breezy to stop to look for the Odd-spot Blue just yet. Instead, we continued on down the far side of the mountain and stopped at a mountainside track above the small town of Zarouchla. As we climbed out of the vehicle, a Southern White Admiral sailed around the Fig Tree beside our parking spot and we headed up the track to explore. Along with some now familiar species like Balkan Marbled White and Lattice Brown, we soon found a couple more to add to the list and in quick succession; a single male Meleager's Blue and within a couple of feet, an Eastern Baton Blue.

Continuing on up towards a small quarry area, we noted a couple of nice flowers including the purple large-flowered *Salvia ringens* and delicate white *Linum tenuifolium*. Several Large Tortoiseshells and Rock Graylings were fluttering round here too, and beside the track a little further up a *Euphorbia rigida* was being devoured by a number of large Spurge Hawkmoth caterpillars. Matt presently shouted to Alice that he'd found a Snakefly but she was too slow getting there to see it. Meanwhile Michael had found a Pyramidal Orchid.



Spurge Hawkmoth Caterpillar
© Martin P

It was soon time to turn round and head back the way we had come. We had our lunch by the vehicles and spent a little more time pottering around the immediate surroundings while doing



Long-tailed Blue © Mikael R

so. This proved fruitful too with Long-tailed Blue noted laying eggs on the Spanish Broom plants nearby in large numbers and several other interesting beetles and other insects being discovered among the leaves of some *Verbascum undulatum*.

Lunch eaten, we ascended once more to the spot where we would look for Odd-spot Blue. On parking up we found it to be windy, not unexpected on this exposed site, but reasonably

warm still. A Corn Bunting sang its jangly song somewhere nearby as we wandered between the low-growing endemic Hawthorns and on up the rocky slope. Clumps of Thyme and starry yellow European Stonecrops flowered between the hummocks of *Astragalus monspessulanus* and Spiny Thrift, the latter being the food plant of our target butterfly.

We split up to search for the tiny rare butterfly and noted a few other species including Black-veined White, Silver-studded Blue and Small Skipper before Matt called out that he had found an Odd-spot. Just a single individual was fluttering against the breeze and settled at first on a stone to sun itself and then amongst the Thyme. A Woodlark sang as we made our way back to the buses and a Ladybird Spider was found by Wilf but promptly vanished into a grassy tussock.



Odd-spot Blue © Martin P

Moving on, we headed down onto the road towards the Cave Lakes where we took a side track and parked up to explore. One of the first butterflies seen was an Anomalous Blue which Phil spotted on alighting from the bus. Mallow Skipper and Cleopatra swiftly followed and we spread out to wander along the track, up the banks and through the surrounding fields. A Hoopoe was calling from somewhere above us and a Cirl Bunting sang from a treetop nearby as we found a new species to add to our list, Purple Hairstreak.

There were some lovely flowers here despite the usual dry conditions. One small paddock bounded by Hawthorn, Blackthorn and Kermes Oak was almost purple with Larkspur and Love-in-a-Mist while elsewhere, Spiny Bear's Breeches, Spanish Oysterplant and Field Eryngo bloomed among the dry grasses. A Southern White Admiral soared around the treetops, pausing briefly for a photo opportunity. Among many others, Lattice Browns and Eastern Bath Whites were common here and after a closer look, a Mountain Small White was identified. Martin and Wilf found a Grecian Copper while Mikael found a Skipper that had us scratching our heads. The only conclusion we could draw would be a Levantine Skipper as it was too large for anything else. Meanwhile Matt had found a Ripart's Anomalous Blue.

As we returned to the vehicles a Nightingale sang from the scrub nearby and we revelled in the liquid melody for a moment before setting off back down the mountain. A rather large but very good meal at a local Pizza parlour awaited us.

Day 6

Once again the morning dawned bright and clear. After breakfast we set off towards the coast, making our first stop in the small town of Diakopto for those who wished to take the cog railway later in the day to buy their tickets in advance. From there it was a short drive to the mouth of the Vouraikos Gorge where we would spend the morning.

Having parked up, Alice set about mixing some fermenting bananas with a splash of ouzo to create a very smelly bait that we hoped would entice some Two-tailed Pashas to come down. She spread it liberally on the leaves and branches of a fig tree and a couple of stones nearby, and within minutes there was a Pasha flapping lazy arcs over the tree.

A few of the group decided to stay and wait for the Pasha to land, but most wandered on up the valley on a path between the river and the railway to see if there was anything else to enjoy while the bait worked its magic. Matt and Martin found a colourful male Peloponnese Wall Lizard, while Alice found a stripy female and a few of us noticed Pool Frogs in the shallows of the river, with one or two sitting out of the water on rocks but none quite close enough for a photo. There were dragonflies here too with Small Pincertail and Beautiful Demoiselle the most numerous plus White-legged Damselfly and some other larger species too fast to identify overhead. Among the butterflies spotted were Pygmy Skipper, an Olive Skipper spotted by Wilf and Eastern Bath White. With the path petering out we returned the way we had come.



Peloponnese Wall Lizard © Martin P



© Alice Hunter

Back at the Fig tree there were now at least two Pashas swooping in to the banana bait plus a couple of Large Tortoiseshells. We were able to get quite close but they weren't settling for long until one Pasha came down to the bait puddle on a stone out in the open and began feeding in earnest. This enabled the whole group to get both excellent views and some superb photographs.

We had a little more time before those catching the train were due at the station and so with a few staying back to watch the Pasha, we spread out over the more open end of the valley to see if there was anything else of note. Matt and Alice found a

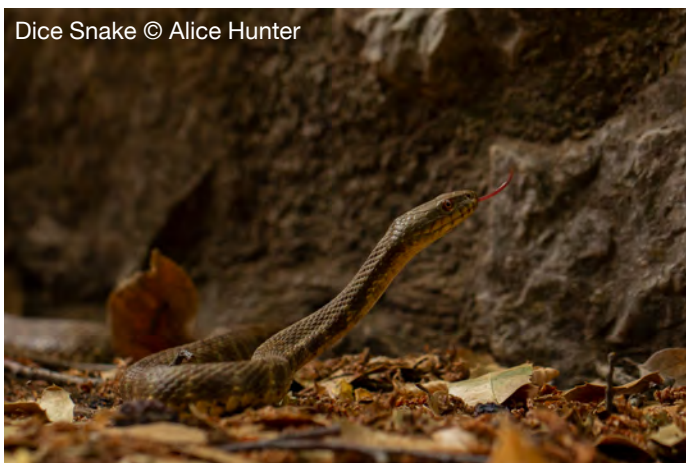
big weevil in the genus *Lixus* which they showed to Wilf and Julia, while Phil had photographed a Violet Dropwing. We also came across both Common and Scarce Swallowtails.

Shortly after, Alice took Julia, Michael, Richard and Helen back to the station in Diakopto to catch the train while the rest of the group had lunch before heading back up hill. We stopped at the same spot we had done on the transfer day and in a glade a short way down the road Alice found both Purple and Ilex Hairstreaks. Back at the main meadow a slightly tatty Southern White Admiral posed obligingly at head height in an Elm tree and Adrian found a Comma. Matt had found Lang's Short-tailed Blue and Mikael had spotted a Hungarian Skipper too.



© Julia P

Dice Snake © Alice Hunter



We moved on uphill to the gardens of the Mega Spilaio Monastery. Just behind where we parked there was a damp patch on the tarmac and Alice was delighted to find a species here which we had yet to record on this trip, a Grecian Anomalous Blue which was puddling. On a path between the trees above we noted Sloe and Ilex Hairstreaks, Woodland Grayling and Brimstone but our attention was suddenly called for by Matt who had found a beautiful Dice Snake among the leaf litter on a lower path.

Having photographed the snake we continued uphill a short way along one of

the devotional paths which leads to a crucifix high up on the mountain top. There were more Hairstreaks out here plus Small Copper, Large Tortoiseshell and Lattice Brown. Adrian also saw a Southern Comma here. We enjoyed views over the Vouraikos gorge below before heading back down to the vehicles.

We were debating where to make a final stop on the way back to Kalavryta when Alice spotted a Hermann's Tortoise crossing the road and stopped to move it to safety. With both buses pulled over to see it, we decided that in fact the spot where we had stopped would make an excellent point to explore and so the group piled out. Meanwhile, knowing that Richard had desperately wanted to see a Tortoise, Alice dashed back to Kalavryta to collect him and they returned to find Anne had carefully kept guard of the Tortoise for Richard to see while the others spread out to look around.

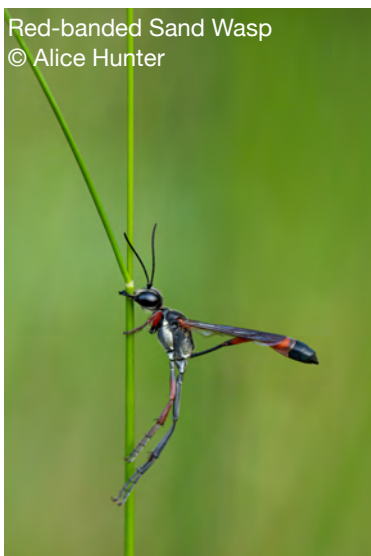
The rough meadow here was full of Felty Germander, an excellent plant for pollinators and providing lots of butterflies to look at as a result. We saw a number of Anomalous Blues, smart Grecian Coppers, Small Copper, and Ilex Hairstreak among others. Martin also found the most fantastic dark purple Balkan Lizard Orchid and between us, no fewer than 7 more tortoises! Alice had initially thought that they might be Spur-thighed but in fact on closer inspection of photos afterwards they all appear to be Hermann's.



Hermann's Tortoise © Alice Hunter

We decided that with time slipping away, we would retire to the hotel for the evening as we had time in the morning to return for further exploration. We enjoyed dinner at Spitiko once more before retiring to bed.

Red-banded Sand Wasp
© Alice Hunter



Day 7

Our final full day in Greece began with another outing, fractionally later, before breakfast for those that wished to take in some roosting butterflies. We headed back to "Tortoise paradise" as our last stop from the previous day had been named. After a little searching our first butterflies were spotted in the form of Common Blue, Balkan Marbled White, Black-veined White and Small Skipper. There seemed at first glance not to be much else around but in an adjacent meadow there were masses of Brown Argus and Jewel Beetles. A Nightingale sang from the scrubby edges along with Cirl Bunting and Blackcap too. Perhaps the star find though was not a butterfly at all but a Red-banded Sand Wasp, grasping a grass stem in its jaws and sitting at a seemingly unnatural angle to sleep. Once photographed along with the other finds, we left it in peace and returned to the hotel for breakfast.

Having eaten, the whole group set out once more for the same spot. Four tortoises made themselves apparent to us this morning and Adrian also saw a Balkan Green Lizard. The Jewel Beetles had dispersed a little but there were still one or two to be seen along with some more butterflies including Southern White Admiral, Small Heath, Sooty Copper, Grecian Copper and Spotted Fritillary. Mikael also found a Sloe Hairstreak, tricky to pick out when the most numerous here were Ilex Hairstreaks.



© Mikael

Grecian Copper © Mikael R

Our exploration of this area well and truly complete, we moved on to a spot a little further down the hill to a spot where the river and railway ran alongside one another and the road crossed them both. Along with what were now



Jewel Beetles © Alice Hunter

commonplace species, we found another Balkan Grayling here. Simon found a Lesser Fiery Copper along the railway embankment and there were more Jewel Beetles than Matt could photograph. Martin found a Hungarian Skipper while Goran spotted a Tufted Marbled Skipper and several Beautiful Demoiselles danced above the water.

Moving on once more we decided to revisit the track we had stopped at on the way down the mountain two days previously. We had lunch before setting out to explore further and enjoyed watching a female Cleopatra nectaring on the Dianthus next to the bus as we ate. The birdsong

was a joyous as on our previous visit with Nightingale, Gull Bunting and Hoopoe all calling, unseen for now. Long-tailed Tits bustled through the scrub nearby and we had barely rounded the first corner on the track when Adrian shouted that he had spotted a Hermit. Unfortunately, it flew up and over the brambles in the hedge where he had seen it and, despite our best efforts at giving chase, out of sight.

Enthusiasm was high as we continued our search and although it was not to be seen again, several other species which we had not encountered here previously soon came to light including Holly Blue, Grecian Copper and Nettle Tree. Mikael found a Dark Green Fritillary and once again we recorded what we decided was Levantine Skipper.

Having had our fill of this spot we decided to head towards a wetter habitat again in search of some possible puddling spots. Simon and Anne led the way and a short distance on down the road found somewhere to pull off down a track which yielded the desired puddles. Here we found Persian Skipper, Olive Skipper and others taking minerals.

Wandering on down the track towards the water Matt found a beautiful Empusa mantis and Alice noted White-legged Damselflies along with the Beautiful Demoiselles over the water. Ilex and Sloe Hairstreaks were joined by Amanda's and Holly Blues on our list plus Large Tortoiseshell and Painted Lady.



© Alice Hunter

Walking back up towards the vehicle a couple of Nettle Tree butterflies were now visiting the puddles too and we paused to admire them before returning to the air-conditioning of the vehicles. It was a hot day and we were all in agreement that a slightly earlier finish to allow time for an ice cream in the town square and packing for our journey home was a good idea.

Day 8

Our last breakfast in Kalavryta devoured, we packed up the buses and set off at a steady pace for the coast at Diakopto. The journey to the airport today would not be filled with butterflies sadly but we should have time for one stop at least.

We took the motorway east and travelled along the coast of the Gulf of Corinth until we came to the Corinth Canal where we made our stop. We found some conveniences and topped up on caffeine. There was time too to wander out onto the bridge over this extraordinary feature and marvel at the thought of it being dug by hand all those years ago.

Soon though, it was time to move on and we made a smooth journey from here back to the airport at Athens where we unloaded, the vehicles were returned and we eventually said our goodbyes, all heading off on different flights. It had been a wonderful week in excellent company and with some fabulous butterflies and plenty of other wildlife to boot.

Systematic Species Checklists

Butterflies			16th	17th	18th	19th	20th	21st
			June	June	June	June	June	June
Imago sightings are marked with a ✓, caterpillars are marked with a ☆			day	day	day	day	day	day
			2	3	4	5	6	7
Family Papilionidae								
1	Swallowtail	<i>Papilio machaon</i>		✓			✓	✓☆
2	Southern Swallowtail	<i>Papilio alexanor</i>				☆		
3	Scarce Swallowtail	<i>Iphiclides podalirius</i>		✓	✓	✓	✓	✓
4	Clouded Apollo	<i>Parnassius mnemosyne</i>	✓	✓				
Family Pieridae								
5	Black-veined White	<i>Aporia crataegi</i>		✓		✓	✓	✓
6	Large White	<i>Pieris brassicae</i>	✓	✓	✓	✓	✓	✓
7	Small White	<i>Pieris rapae</i>		✓	✓	✓	✓	✓
8	Mountain Small White	<i>Pieris ergane</i>		✓	✓		✓	
9	Eastern Bath White	<i>Pontia edusa</i>	✓	✓	✓	✓	✓	✓
10	Orange Tip	<i>Anthocharis cardamines</i>	✓	✓				✓
11	Clouded Yellow	<i>Colias crocea</i>	✓	✓	✓	✓	✓	✓
12	Greek Clouded Yellow	<i>Colias aurorinia</i>		✓				
13	Brimstone	<i>Gonepteryx rhamni</i>	✓	✓		✓	✓	✓
14	Powdered Brimstone	<i>Gonepteryx farinosa</i>		✓				
15	Cleopatra	<i>Gonepteryx cleopatra</i>	✓	✓	✓	✓	✓	✓
16	Wood White	<i>Leptidea sinapis</i>	✓	✓	✓	✓	✓	✓
Family Lycaenidae								
17	Purple Hairstreak	<i>Favonius quercus</i>				✓	✓	✓
18	Ilex Hairstreak	<i>Satyrium ilicis</i>	✓	✓	✓	✓	✓	✓
19	Sloe Hairstreak	<i>Satyrium acaciae</i>			✓	✓	✓	✓

Butterflies			16th	17th	18th	19th	20th	21st
			June	June	June	June	June	June
Imago sightings are marked with a ✓, caterpillars are marked with a ☆			day	day	day	day	day	day
			2	3	4	5	6	7
20	Blue-spot Hairstreak	<i>Satyrium spini</i>			✓	✓		
21	White-letter Hairstreak	<i>Satyrium w-album</i>			✓			
22	Small Copper	<i>Lycaena phlaeas</i>	✓	✓	✓		✓	✓
23	Grecian Copper	<i>Lycaena ottomana</i>				✓	✓	✓
24	Sooty Copper	<i>Lycaena tityrus</i>	✓	✓				✓
25	Purple-shot Copper	<i>Lycaena alciphron</i>		✓				
26	Lesser Fiery Copper	<i>Lycaena thersamon</i>		✓				✓
27	Long-tailed Blue	<i>Lampides boeticus</i>			✓	✓	✓	✓
28	Geranium Bronze	<i>Cacyreus marshalli</i>			✓			
29	Lang's Short-tailed Blue	<i>Leptons pirithous</i>			✓		✓	✓
30	Holly Blue	<i>Celastrina argiolus</i>	✓	✓	✓	✓	✓	✓
31	Small Blue	<i>Cupido minimus</i>		✓				
32	Odd-spot Blue	<i>Turanana endymion</i>				✓		
33	Eastern Baton Blue	<i>Pseudophilotes vicrama</i>				✓		
34	Grass Jewel	<i>Freyeria trochylus</i>			✓			
35	Zephyr Blue	<i>Kretania sephirus</i>	✓		✓			✓
36	Silver-studded Blue	<i>Plebejus argus</i>	✓		✓	✓		
37	Idas Blue	<i>Plebejus idas</i>	✓					
38	Brown Argus	<i>Aricia agestis</i>	✓	✓	✓	✓	✓	✓
39	Northern Brown Argus	<i>Aricia artaxerxes</i>	✓					
40	Blue Argus	<i>Aricia anteros</i>	✓					
41	Mazarine Blue	<i>Cyaniris semiargus</i>	✓					
42	Escher's Blue	<i>P. escheri ssp. dalmatica</i>				✓	✓	✓
43	Amanda's Blue	<i>Polyommatus amandus</i>	✓			✓	✓	✓
44	Chapman's Blue	<i>Polyommatus thersites</i>	✓	✓	✓	✓	✓	✓
45	Anomalous Blue	<i>Polyommatus admetus</i>			✓	✓	✓	✓
46	Grecian Anomalous Blue	<i>Polyommatus aroaniensis</i>					✓	
47	Ripart's Anomalous Blue	<i>Polyommatus ripartii</i>		✓	✓	✓	✓	✓
48	Turquoise Blue	<i>Polyommatus dorylas</i>	✓		✓	✓		
49	Meleager's Blue	<i>Polyommatus daphnis</i>				✓		
50	Adonis Blue	<i>Lysandra bellargus</i>	✓	✓	✓			
51	Common Blue	<i>Polyommatus icarus</i>	✓	✓	✓	✓	✓	✓
52	Eros Blue	<i>Polyommatus eros</i>	✓	✓				
Family Nymphalidae								

Butterflies			16th	17th	18th	19th	20th	21st
			June	June	June	June	June	June
Imago sightings are marked with a ✓, caterpillars are marked with a ☆			day	day	day	day	day	day
			2	3	4	5	6	7
53	Nettle Tree Butterfly	<i>Libythea celtis</i>		✓				✓
54	Two-tailed Pasha	<i>Charaxes jasius</i>					✓	
55	Southern White Admiral	<i>Limenitis reducta</i>		✓	✓	✓	✓	✓
56	Camberwell Beauty	<i>Nymphalis antiopa</i>				✓		
57	Peacock	<i>Aglais io</i>		✓				
58	Small Tortoiseshell	<i>Aglais urticae</i>	✓	✓				
59	Large Tortoiseshell	<i>Nymphalis polychloros</i>	✓	✓	✓	✓	✓	✓
60	Red Admiral	<i>Vanessa atalanta</i>	✓	✓		✓		
61	Painted Lady	<i>Vanessa cardui</i>	✓	✓	✓	✓	✓	✓
62	Queen of Spain Fritillary	<i>Issoria lathonia</i>	✓	✓				✓
63	Comma	<i>Polygonia c-album</i>		✓			✓	✓
64	Southern Comma	<i>Polygona egea</i>		✓		✓	✓	
65	Cardinal	<i>Argynnis pandora</i>		✓				
66	Silver-washed Fritillary	<i>Argynnis paphia</i>					✓	✓
67	Dark Green Fritillary	<i>Speyeria aglaja</i>	✓	✓				✓
68	Pearl-bordered Fritillary	<i>Boloria euphrosyne</i>	✓	✓				
69	Glanville Fritillary	<i>Melitaea cinxia</i>		✓				
70	Spotted Fritillary	<i>Melitaea didyma</i>	✓			✓		✓
71	Lesser Spotted Fritillary	<i>Melitaea trivia</i>			✓			
72	Heath Fritillary	<i>Melitaea athalia</i>	✓	✓				
73	Balkan Marbled White	<i>Melanargia larissa</i>	✓	✓	✓	✓	✓	✓
74	Eastern Rock Grayling	<i>Hipparchia syriaca</i>				✓		
75	Woodland Grayling	<i>Hipparchia fagi</i>			✓		✓	✓
76	Balkan Grayling	<i>Hipparchia aristaeus ssp. senthes</i>		✓			✓	✓
77	Tree Grayling	<i>Hipparchia statilinus</i>			✓			
78	Freyer's Grayling	<i>Hipparchia fatua</i>		✓	✓		✓	
79	The Hermit	<i>Chazara briseis</i>						✓
80	Great Banded Grayling	<i>Brintesia circe</i>			✓	✓	✓	✓
81	Meadow Brown	<i>Maniola jurtina</i>	✓	✓	✓	✓	✓	✓
82	Small Heath	<i>Coenonympha pamphilus</i>	✓	✓		✓		✓
83	Speckled Wood	<i>Pararge aegeria</i>	✓		✓			
84	Wall Brown	<i>Lasiommata megera</i>	✓	✓	✓			
85	Large Wall Brown	<i>Lasiommata maera</i>		✓				
86	Lattice Brown	<i>Kirinia roxelana</i>		✓	✓	✓	✓	✓

Butterflies			16th	17th	18th	19th	20th	21st
			June	June	June	June	June	June
Imago sightings are marked with a ✓, caterpillars are marked with a ☆			day	day	day	day	day	day
			2	3	4	5	6	7
	Family Hesperidae							
87	Grizzled Skipper	<i>Pyrgus malvae</i>	✓	✓				
88	Oberthur's Grizzled Skipper	<i>Pyrgus armoricanus</i>	✓	✓		✓	✓	
89	Olive Skipper	<i>Pyrgus serratalae</i>		✓			✓	✓
90	Hungarian Skipper	<i>Spialia orbifer</i>	✓	✓		✓	✓	✓
91	Persian Skipper	<i>Spialia phlomidis</i>	✓	✓		✓		✓
92	Mallow Skipper	<i>Carcharodus alcaea</i>	✓	✓	✓	✓	✓	✓
93	Tufted Marbled Skipper	<i>Carcharodus floccifera</i>						✓
94	Oriental Marbled Skipper	<i>Carcharodus orientalis</i>		✓		✓	✓	✓
95	Dingy Skipper	<i>Erynnis tages</i>			✓	✓		
96	Levantine Skipper	<i>Thymelicus hyrax</i>				✓		✓
97	Essex Skipper	<i>Thymelicus lineola</i>	✓	✓	✓	✓	✓	✓
98	Small Skipper	<i>Thymelicus sylvestris</i>	✓		✓	✓	✓	✓
99	Large Skipper	<i>Ochlodes sylvanus</i>			✓	✓		✓
100	Pygmy Skipper	<i>Gegenes pumilio</i>			✓		✓	



White-legged Damselfly © Alice Hunter



















Scarce Swallowtail © Richard W

Dragonflies & Damselflies			16th	17th	18th	19th	20th	21st
			June	June	June	June	June	June
			day	day	day	day	day	day
			2	3	4	5	6	7
1	Beautiful Demoiselle	<i>Calopteryx virgo</i>					✓	✓
2	White-legged Damselfly	<i>Platycnemis latipes</i>					✓	
3	Broad-bodied Chaser	<i>Libellula depressa</i>						✓
4	Violet Dropwing	<i>Trithemis annulata</i>					✓	
5	Keeled Skimmer	<i>Orthetrum caeruleum</i>		✓				
6	Small Pincertail	<i>Onychogomphus forcipatus</i>					✓	
7	Greek Goldenring	<i>Cordulegaster Helladic</i>		✓				

Moths			16th June	17th June	18th June	19th June	20th June	21st June
			day 2	day 3	day 4	day 5	day 6	day 7
Imago sightings are marked with a ✓, caterpillars are marked with a ☆						✓		
1	Pale Shoulder	<i>Acontia lucida</i>				✓		
2	Forester sp.	<i>Adscita sp.</i>	✓	✓				
3	Silver Y	<i>Autographa gamma</i>	✓			✓		
4	A Yellow Underwing	<i>Catocala nymphaea</i>	✓	✓	✓	✓	✓	✓
5	A Clearwing	<i>Chamaesphecia bibioniformis</i>		✓				
6	A Clearwing	<i>Chamaesphecia doleriformis</i>					✓	
7	Box Tree Moth	<i>Cydalima perspectalis</i>				✓		
8	A Crambid	<i>Eurrhysis cacuminalis</i>	✓					
9	Broad-bordered Bee Hawkmoth	<i>Hemaris fuciformis</i>	✓					
10	Spurge Hawkmoth	<i>Hyles euphorbiae</i>				☆		
11	Hummingbird Hawkmoth	<i>Macroglossum stellatarum</i>	✓	✓		✓		
12	Olive Tree Pearl	<i>Palpita vitrealis</i>				✓		
13	Small Blood-vein	<i>Scopula imitaria</i>				✓		
14	Mullein Moth	<i>Shargacucullia verbasci</i>	☆					
15	Mistletoe Clearwing	<i>Synanthedon loranthe</i>	✓					
16	A Pyralid	<i>Synaphe moldavica</i>	✓					
17	Crepuscular Burnet	<i>Zygaena carniolica</i>				✓		
18	6 Spot Burnet	<i>Zygaena filipendulae</i>	✓			✓		
19	Transparent Burnet	<i>Zygaena purpuralis</i>	✓	✓		✓		

Reptiles & Amphibians			16th June	17th June	18th June	19th June	20th June	21st June
			day 2	day 3	day 4	day 5	day 6	day 7
Endemic species are noted with a ☆							✓	
1	Pool Frog	<i>Pelophylax lessonae</i>					✓	
2	Kotschy's Gecko	<i>Mediodactylus kotschy</i>		✓	✓			
3	Greek Slowworm	<i>Anguis graeca</i>	✓	✓				
4	Peloponnese Wall Lizard	<i>Podarcis peloponnesiacus</i>					✓	
5	Balkan Green Lizard	<i>Lacerta trilineata</i>		✓				✓
6	Wall Lizard	<i>Podarcis muralis</i>		✓				
7	Dice Snake	<i>Natrix tessellata</i>					✓	
8	Hermann's Tortoise	<i>Testudo hermanni</i>					✓	✓

Birds			16th	17th	18th	19th	20th	21st
			June	June	June	June	June	June
Species seen are marked with a ✓, those heard but not seen are marked with 			day	day	day	day	day	day
			2	3	4	5	6	7
1	Kestrel	<i>Falco tinnunculus</i>			✓			
2	Collared Dove	<i>Streptopelia decaocto</i>			✓			
3	Cuckoo	<i>Cuculus canorus</i>						
4	Common Swift	<i>Apus apus</i>	✓					
5	Hoopoe	<i>Upupa epops</i>		✓				
6	Green Woodpecker	<i>Picus viridis</i>						
7	Woodlark	<i>Lullula arborea</i>						
8	Crag Martin	<i>Ptyonoprogne rupestris</i>						
9	Swallow	<i>Hirundo rustica</i>	✓	✓				
10	Red-rumped Swallow	<i>Cecropis daurica</i>		✓				
11	House Martin	<i>Delichon urbicum</i>	✓					
12	Robin	<i>Erithacus rubecula</i>						
13	Nightingale	<i>Luscinia megarhynchos</i>						
14	Northern Wheatear	<i>Oenanthe oenanthe</i>	✓			✓		
15	Black-eared Wheatear	<i>Oenanthe hispanica</i>		✓				
16	Song Thrush	<i>Turdus philomelos</i>						
17	Blackbird	<i>Turdus merula</i>						
18	Blue Rock Thrush	<i>Monticola solitarius</i>		✓				
19	Blackcap	<i>Sylvia atricapilla</i>						
20	Chiffchaff	<i>Phylloscopus collybita</i>		✓				
21	Goldcrest	<i>Regulus regulus</i>				✓		
22	Wren	<i>Troglodytes troglodytes</i>				✓		
23	Coal Tit	<i>Parus ater</i>	✓					
24	Blue Tit	<i>Cyanistes caeruleus</i>						✓
25	Long-tailed Tit	<i>Aegithalos caudatus</i>						✓
26	Rock Nuthatch	<i>Sitta neumayer</i>		✓	✓			
27	Red-backed Shrike	<i>Lanius collurio</i>				✓		
28	Magpie	<i>Pica pica</i>			✓			✓
29	Jay	<i>Garrulus glandarius</i>	✓			✓		✓
30	Hooded Crow	<i>Corvus cornix</i>	✓		✓			

Birds			16th June	17th June	18th June	19th June	20th June	21st June
			day 2	day 3	day 4	day 5	day 6	day 7
Species seen are marked with a ✓, those heard but not seen are marked with 🎵								
31	Raven	<i>Corvus corax</i>	✓					
32	Golden Oriole	<i>Oriolus oriolus</i>		✓				
33	Chaffinch	<i>Fringilla coelebs</i>	🎵	🎵				
34	Goldfinch	<i>Carduelis carduelis</i>		🎵		✓		
35	Greenfinch	<i>Chloris chloris</i>		✓				
36	Serin	<i>Serinus serinus</i>	🎵					
37	Cirl Bunting	<i>Emberiza cirlus</i>				✓		🎵
38	Corn Bunting	<i>Emberiza calandra</i>				🎵		



Antlion © Richard W



Greek Spoonwing © Wilf P

Other Notable Invertebrates			16th June	17th June	18th June	19th June	20th June	21st June
			day 2	day 3	day 4	day 5	day 6	day 7
Endemic species are noted with a ☆								
1	Bright Bush-cricket	<i>Poecilimon sp.</i>					✓	✓
2	Greek Marbled Bush-cricket	<i>Eupholidoptera megastyla</i>		✓				
3	Greek Predatory Bush-cricket	<i>Saga hellenica</i>		✓	✓			
4	Field Cricket	<i>Gryllus campestris</i>	✓	✓				
5	Blue-winged Grasshopper	<i>Oedipoda caerulescens</i>			✓		✓	
6	Red-winged Grasshopper	<i>Oedipoda germanica</i>		✓	✓		✓	
7	Parnassos Stone Grasshopper ☆	<i>Glyphanus obtusus</i>	✓					
8	Praying Mantis	<i>Mantis religiosa</i>		✓				
9	A Conehead Mantis	<i>Empusa fasciata</i>						✓
10	Mediterranean Shieldbug	<i>Carpocoris mediterraneus</i>	✓					
11	A Shield Bug	<i>Ventocoris achivus</i>					✓	
12	East Aegean Cicada	<i>Cicada mordoganensis</i>					✓	✓

Other Notable Invertebrates			16th June	17th June	18th June	19th June	20th June	21st June
			day 2	day 3	day 4	day 5	day 6	day 7
Endemic species are noted with a ☆								
13	Ash Cicada	<i>Cicada orni</i>	✓			✓		
14	A Cicada	<i>Cicadatra hyalina</i>				✓		
15	A Cicada	<i>Cicadetta cantilatrix</i>		✓				
16	Horned Treehopper	<i>Centrotus cornutus</i>				✓		
17	Greek Spoonwing	<i>Nemoptera coa</i>		✓				
18	A Small Antlion	<i>Myrmecaelurus trigrammus</i>					✓	
19	A Large Antlion	<i>Palpares libelluloides</i>			✓	✓		✓
20	Green Tiger Beetle	<i>Cicindela campestris</i>		✓				
21	Forest Caterpillar-hunter	<i>Calosoma sycophanta</i>		✓				
22	Rose Chafer	<i>Protaetia cupra</i>	✓					
23	White-spotted Rose Chafer	<i>Oxythyrea funesta</i>		✓				
24	A Jewel Beetle	<i>Anthaxia sp.</i>			✓		✓	✓
25	Common Malachite Beetle	<i>Malachius bipustulatus</i>	✓	✓				
26	A Churchyard Beetle	<i>Blaps sp.</i>	✓					
27	A Longhorn Beetle	<i>Purpuricenus budensis</i>	✓		✓			
28	A Longhorn Beetle	<i>Purpuricenus desfontainii</i>			✓			
29	A Longhorn Beetle	<i>Morimus asper</i>				✓		
30	A Longhorn Beetle	<i>Agapanthia sp</i>				✓	✓	
31	Rosemary Leaf Beetle	<i>Chrysolina americana</i>			✓			
32	Black-cloaked Bee-fly	<i>Hemipenthes morio</i>		✓				
33	Silvery Bee-fly	<i>Exoprosopa jacchus</i>					✓	
34	Hornet Hoverfly	<i>Volucella zonaria</i>	✓					
35	Wood Ant	<i>Formica pratensis</i>	✓	✓				
36	Red-banded Sand Wasp	<i>Ammophila sabulosa</i>						✓
37	Golden Digger Wasp	<i>Sphex funerarius</i>		✓				
38	Scarce Long-horned Bee	<i>Eucera nigrescens</i>				✓		
39	Ladybird Spider	<i>Eresus sandaliatus</i>		✓		✓		
40	A Jumping Spider	<i>Philaeus chrysops</i>				✓		
41	Crab Spider	<i>Thomisus onistus</i>			✓			
42	Mediterranean Banded Centipede	<i>Scolopendra cingulata</i>	✓					

Notable Plants			16th	17th	18th	19th	20th	21st
			June	June	June	June	June	June
Greek endemic species are noted with a ☆			day	day	day	day	day	day
			2	3	4	5	6	7
	Dicotyledons							
	Acanthaceae							
1	Spiny Bear's Breeches	<i>Acanthus spinosus</i>		✓		✓		✓
	Adoxaceae							
2	Danewort/Dwarf Elder	<i>Sambucus ebulus</i>	✓	✓		✓		
	Apiaceae							
3	A Hare's Ear ☆	<i>Bupleurum glumaceum</i>			✓		✓	
4	Field Eryngo	<i>Eryngium campestre</i>				✓		✓
5	An Umbellifer	<i>Opopanax hispidus</i>				✓		✓
6	Spreading Hedge-Parsley	<i>Torilis arvensis</i>	✓				✓	✓
	Apocynaceae							
7	Oleander	<i>Nerium oleander</i>					✓	
	Asteraceae							
8	A Yarrow	<i>Achillea fraasii</i>				✓		
9	A Yarrow ☆	<i>Achillea umbellata</i>				✓		
10	Downy Safflower	<i>Carthamus lanatus</i>				✓		
11	A Knapweed ☆	<i>Centaurea pelia</i>		✓				
12	A Cornflower	<i>Centaurea pichleri</i>				✓		
13	A Knapweed	<i>Centaurea salonitana</i>		✓				
14	Chicory	<i>Cichorium intybus</i>	✓		✓	✓		
15	Glandular Globe Thistle	<i>Echinops sphaerocephalus</i>			✓			
16	Greek Hawkbit ☆	<i>Leontodon graecus</i>	✓					
17	Argolian Cotton Thistle	<i>Onopordum tauricum</i>	✓	✓	✓	✓		✓
18	Pallenis	<i>Pallenis spinosa</i>			✓	✓		✓
19	Rough Phagnalon	<i>Phagnalon rupestre</i>			✓			
20	Ivory Thistle	<i>Ptilostemon afer</i>				✓		
21	Spanish Oysterplant	<i>Scolymus hispanicus</i>			✓	✓	✓	✓
22	An Everlasting	<i>Xeranthemum inapertum</i>	✓					
	Boraginaceae							
23	Alkanet	<i>Anchusa officinalis</i>	✓			✓		
24	Pale Viper's Bugloss	<i>Echium italicum</i>	✓					

Notable Plants			16th	17th	18th	19th	20th	21st
			June	June	June	June	June	June
Greek endemic species are noted with a ☆			day	day	day	day	day	day
			2	3	4	5	6	7
	Brassicaceae							
25	Woad	<i>Isatis tinctoria</i>	✓					
	Campanulaceae							
26	A Bellflower	<i>Asyneuma limonifolium</i>	✓					
27	A Bellflower	<i>Campanula spatulata ssp. sprunerana</i>		✓				
28	A Bellflower ☆	<i>Campanula topaliana ssp. delphica</i>	✓	✓				
	Capparaceae							
29	Caper	<i>Capparis spinosa</i>		✓	✓		✓	
	Caprifoliaceae							
30	Persian Whorlflower	<i>Morina persica</i>				✓		
31	A Cushion Scabious ☆	<i>Ptercephalus ptercephala</i>	✓			✓		
	Caryophyllaceae							
32	Greek Snow-in-summer	<i>Cerastium candidissimum</i>	✓					
33	A Pink ☆	<i>Dianthus biflorus</i>	✓					
34	Hairy Rupturewort	<i>Herniaria hirsuta</i>	✓					
35	Proliferous Childling Pink	<i>Petrohragia prolifera</i>	✓	✓		✓		✓
36	A Champion ☆	<i>Silene corinthiaca</i>			✓			
	Convolvulaceae							
37	Dwarf Morning Glory	<i>Convolvulus cantabrica</i>	✓					
	Crassulaceae							
38	European Stonecrop	<i>Sedum ochroleucum</i>	✓			✓	✓	
	Cucurbitaceae							
39	Squirting Cucumber	<i>Ecballium elaterium</i>					✓	
	Euphorbiaceae							
40	Broad-leaved Glaucous Spurge	<i>Euphorbia myrsinites</i>	✓					
41	Upright Myrtle Spurge	<i>Euphorbia rigida</i>				✓		
	Fabaceae							
42	Mountain Kidney Vetch	<i>Anthyllis montana</i>	✓					
43	A Milkvetch	<i>Astragalus angustifolius</i>	✓			✓		
44	A Milkvetch	<i>Astragalus monspessulanus</i>	✓	✓				
45	Two-flowered Everlasting Pea	<i>Lathyrus grandiflorus</i>	✓			✓		

Notable Plants			16th	17th	18th	19th	20th	21st
			June	June	June	June	June	June
Greek endemic species are noted with a ☆			day	day	day	day	day	day
			2	3	4	5	6	7
46	A Vetchling	<i>Lathyrus laxiflorus</i>	✓	✓				
47	Grass Vetchling	<i>Lathyrus nissolia</i>		✓				
48	A Sainfoin ☆	<i>Onobrychis ebenoides</i>	✓					
49	Pitch Trefoil	<i>Psoralea bituminosa</i>		✓	✓			
50	Purple Crown Vetch	<i>Securigera varia</i>	✓	✓	✓			
51	Hare's Foot Clover	<i>Trifolium arvense</i>	✓	✓				
52	Strawberry Clover	<i>Trifolium fragiferum</i>	✓	✓				
Geraniaceae								
53	Grey Cranesbill	<i>Geranium subcaulescens</i>	✓					
Grossulariaceae								
54	A Gooseberry ☆	<i>Ribes uva-crispa</i> ssp. <i>austroeuropaeum</i>				✓		
Heliotropiaceae								
55	Heliotrope	<i>Heliotropium europaeum</i>			✓			
Hypericaceae								
56	A St John's Wort	<i>Hypericum rumeliacum</i>	✓					
Lamiaceae								
57	Alpine Calamint	<i>Acinos alpinus</i>	✓					
58	Ground Pine	<i>Ajuga chamaepitys</i>			✓			
59	Large Red Deadnettle	<i>Lamium garganicum</i>	✓					
60	Naked Catmint	<i>Nepeta nuda</i>	✓					
61	Cut-leaved Selfheal	<i>Prunella laciniata</i>	✓					
62	Greek Horehound	<i>Pseudodictamnus acetabulosus</i>	✓	✓				
63	Mount Olympus Sage	<i>Salvia ringens</i>				✓		✓
64	Rosemary	<i>Salvia rosmarinus</i>			✓			
65	Common Woundwort	<i>Stachys germanica</i>	✓	✓				
66	Swainson's Hedge-Nettle ☆	<i>Stachys swainsonii</i>		✓				
67	Felty Germander	<i>Teucrium pollium</i>				✓	✓	✓
68	A Thyme	<i>Thymbra capitata</i>	✓		✓		✓	
69	Chaste Tree	<i>Vitex agnus-castus</i>					✓	
Linaceae								

Notable Plants			16th June	17th June	18th June	19th June	20th June	21st June
			day 2	day 3	day 4	day 5	day 6	day 7
Greek endemic species are noted with a ☆						✓		
70	Narrow-leaved Flax	<i>Linum tenuifolium</i>				✓		
	Lythraceae							
71	Rose Loosestrife	<i>Lythrum junceum</i>			✓		✓	
	Malvaceae							
72	Eastern Hollyhock	<i>Alcea pallida</i>	✓	✓	✓			
	Papaveraceae							
73	Yellow Horned Poppy	<i>Glaucium flavum</i>					✓	
	Plantaginaceae							
74	Peloponnese Toadflax ☆	<i>Linaria peloponnesiaca</i>	✓			✓		
	Plumbaginaceae							
75	Spiny Thrift	<i>Acantholimon androsaceum</i>				✓		
	Primulaceae							
76	A Yellow Loosestrife ☆	<i>Lysimachia serpyllifolia</i>	✓					
	Ranunculaceae							
77	Large Pheasant's Eye	<i>Adonis flammea</i>	✓					
78	Larkspur	<i>Consolida ajacis</i>			✓	✓	✓	✓
79	A Hellebore	<i>Helleborus cyclophyllus</i>	✓	✓				
80	Love-in-a-Mist	<i>Nigella damascena</i>				✓		✓
81	Rough-seed Buttercup	<i>Ranunculus muricatus</i>		✓				
82	A Buttercup	<i>Ranunculus psilostachys</i>	✓					
	Resedaceae							
83	Mignonette	<i>Reseda lutea</i>			✓			
	Rosaceae							
84	A Hawthorn ☆	<i>Crataegus pycnoloba</i>	✓			✓		
85	Herb Bennet	<i>Geum urbanum</i>		✓				
86	Sulphur Cinquefoil	<i>Potentilla recta</i>	✓	✓				
	Scrophulariaceae							
87	A Figwort	<i>Scrophularia canina ssp. bicolor</i>	✓			✓		
88	Showy Mullein	<i>Verbascum speciosum</i>	✓	✓	✓	✓		✓
	Thymelaeaceae							
89	Jasmine-flowered Daphne ☆	<i>Daphne jasminea</i>			✓			

Notable Plants			16th	17th	18th	19th	20th	21st
			June	June	June	June	June	June
Greek endemic species are noted with a ☆			day	day	day	day	day	day
			2	3	4	5	6	7
90	Olive-leaved Daphne	<i>Daphne oleoides</i>	✓					
	Verbenaceae							
91	Vervain	<i>Verbena officinalis</i>		✓				
	Monocotyledons							
	Asparagaceae							
92	Tassel Hyacinth	<i>Muscari comosum</i>	✓					
	Asphodelaceae							
93	Hollow-stemmed Asphodel	<i>Asphodelus fistulosus</i>		✓				
	Iridaceae							
94	Wild Gladiolus	<i>Gladiolus illyricus</i>		✓				
	Orchidaceae							
95	Pyramidal Orchid	<i>Anacamptis pyramidalis</i>		✓		✓		
96	White Helleborine	<i>Cephalanthera damasonium</i>	✓	✓		✓		
97	Red Helleborine	<i>Cephalanthera rubra</i>	✓					
98	Dark Red Helleborine	<i>Epipactis atrorubens</i>	✓					
99	Balkan Lizard Orchid	<i>Himantoglossum jankae</i>					✓	
	Poaceae							
100	Feathergrass	<i>Stipa pennata</i>	✓					

Photo Gallery





Clouded Apollo © Martin P



Chamaesphecia bibioniformis © Alice Hunter



Anomalous Blue © Mikael R

© Mikael



Antlion © Wilf P



Clouded Yellows © Mikael R

© Mikael



Blue-spot Hairstreak © Martin P



Grecian Copper © Wilf P



Lesser Spotted Fritillary © Alice Hunter



Large Tortoiseshell © Martin P



Idas Blue © Wilf P



Two-tailed Pasha © Alice Hunter



Sooty Copper © Martin P



Scarce Swallowtail © Mikael R

© Mikael



© Alice Hunter



Cleopatra © Martin P



© Mikael

Anomalous Blue © Mikael R

Balkan Marbled White © Richard W



Anomalous Blue © Wilf P



Beautiful demoiselle © Alice Hunter



Lythrum junceum © Alice Hunter



Balkan Lizard Orchid © Alice Hunter



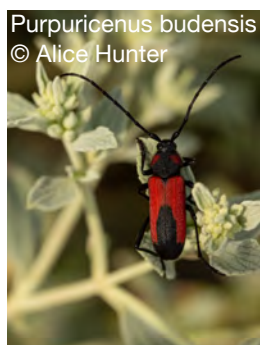
© Martin P



Meleager's Blue © Wilf P



Scarce Swallowtail © Richard W



Purpuricenus budensis © Alice Hunter



Mazarine Blue © Mikael R

© Mikael

Grass Jewel © Mikael R



© Mikael



Black-veined White © Wilf P



Chamaesphecia doleriformis © Alice Hunter



Balkan Marbled White © Mikael R

© Mikael

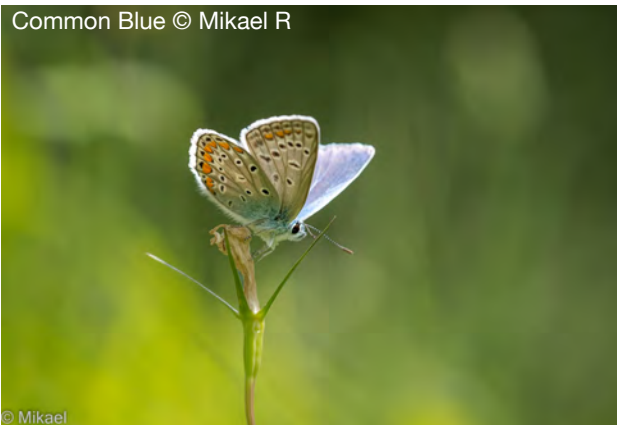


Grass Jewel © Richard W



Blue Argus © Martin P

Common Blue © Mikael R



© Mikael



Clouded Yellow © Martin P



© Martin P



Broad-bodied Chaser © Alice Hunter



Brown Argus © Alice Hunter



Eastern Bath White © Mikael R

© Mikael



Freyer's Grayling © Wilf P

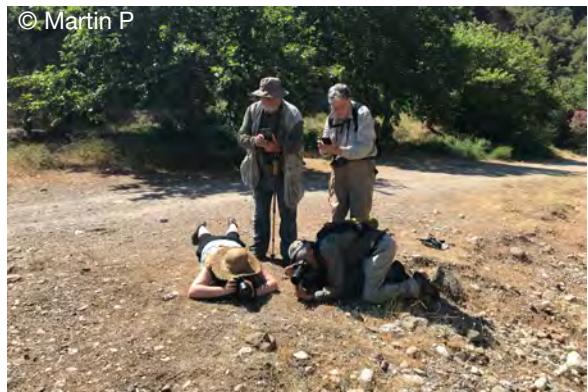


Crepuscular Burnets © Mikael R

© Mikael



© Alice Hunter



© Martin P



Nettle Tree © Alice Hunter



Freyer's Grayling © Mikael R

© Mikael



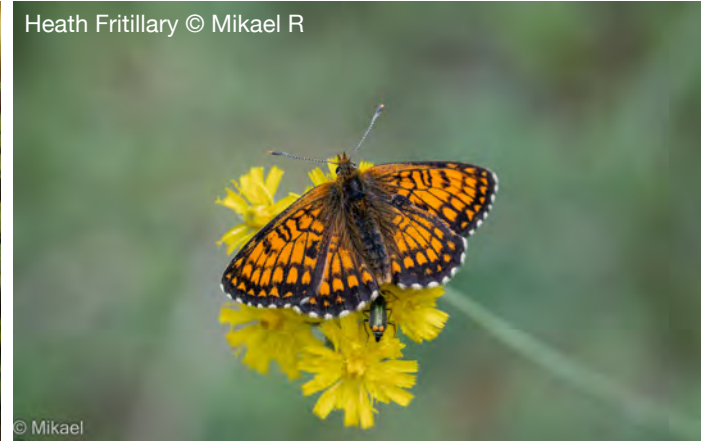
Great Banded Grayling © Martin P



Grass Jewel © Martin P



Grecian Copper © Martin P



Heath Fritillary © Mikael R

© Mikael



Pygmy Skipper © Mikael R

© Mikael



Lang's Short-tailed Blue © Martin P

© Julia P



© Alice Hunter



Olive Skipper © Alice Hunter



Long-tailed Blue © Martin P



Lattice Brown © Martin P



Grecian Copper © Martin P



Salvia ringens © Alice Hunter



White-letter Hairstreak © Martin P

Scarce Swallowtail © Martin P



Large Wall © Martin P

White-letter Hairstreak © Richard W



© Julia P

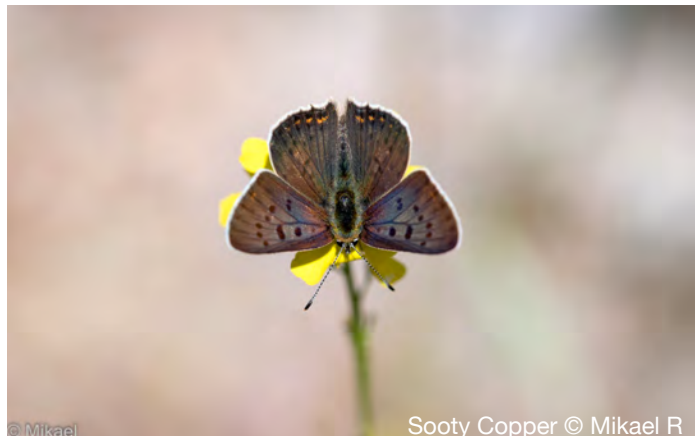
Sulphur Cinquefoil © Alice Hunter



© Martin P



Southern White Admiral © Martin P



© Mikael

Sooty Copper © Mikael R