

Important grasses for northern (n), central (c) and southern (s) Queensland

Desirable perennial grasses

Black speargrass	<i>Heteropogon contortus</i> (- n,c)
Buffel grass	<i>Cenchrus ciliaris</i> (n, c, s*)
Desert bluegrass/forest Mitchell	<i>Bothriochloa ewartiana</i> (- n, c, s)
Early spring grass	<i>Eriochloa pseudoacrotricha</i> (c,s)
Forest bluegrass	<i>Bothriochloa bladhii</i> (- n, c, s)
Kangaroo grass	<i>Themeda triandra</i> (- n, c, s)
Queensland bluegrass	<i>Dichanthium sericeum</i> (- c, s)
Sabi grass	<i>Urochloa mosambicensis</i> (+ n, c, s*)

Intermediate value grasses (perennials and annuals)

Barbwire grass	<i>Cymbopogon refractus</i> (n, c, s)
Button grass	<i>Dactyloctenium radulans</i> (+ c)
Comet grass	<i>Perotis rara</i> (+ n, c, s)
Fairy grass	<i>Sporobolus caroli</i> (+ c, s)
Finger grasses	<i>Digitaria</i> species (s)
Golden beard or ribbon grass	<i>Chrysopogon fallax</i> (n, c, s)
Indian bluegrass or couch	<i>Bothriochloa pertusa</i> (+ n*)
Leafy nine-awn/bottle washer	<i>Enneapogon polyphyllus</i> (+ n, c, s)
Liverseed grass	<i>Urochloa panicoides</i> (+*)
Mulga mitchell	<i>Thyridolepis</i> species (s)
Native couch	<i>Brachyachne convergens</i> (+)
Panics	<i>Panicum</i> species (+)
Pitted bluegrass	<i>Bothriochloa decipiens</i> (n, c, s)
Poverty grass	<i>Eremochloa bimaculata</i> (c, s)
Red Natal grass	<i>Melinis repens</i> (+ n, c, s)
Silky browntop	<i>Eulalia aurea</i> (<i>E. fulva</i>) (- n, c)
Slender chloris	<i>Chloris divaricata</i> (+ n, c, s)
Twirly windmill grass	<i>Enteropogon</i> species (+ c, s)
Woodland love grass	<i>Eragrostis sororia</i> (+ n, c, s)

Undesirable or low value grasses

Fairy grass	<i>Sporobolus australasicus</i> (+ n, c, s)
Five minute grass	<i>Tripogon loliiformis</i> (+ c, s)
Granite love grass	<i>Eragrostis molybdea</i> (+)
One seed grass	<i>Cleistochloa subjuncea</i>
Pigeon grass	<i>Setaria</i> species (n, c, s)
Rat's tail grasses	<i>Sporobolus</i> species (+ n, c, s)
Rough speargrass	<i>Stipa scabra</i> (s)
Small burr grass	<i>Tragus australianus</i> (+ n, c, s)
Sedges	<i>Cyperus</i> and <i>Fimbristylis</i> (+)
Slender bamboo grass	<i>Stipa verticillata</i> (+ s)
Wiregrass, feathertop	<i>Aristida latifolia</i> (+ n, c, s)
Wiregrass, dark	<i>A. calycina</i> (+ c, s)
Wiregrass, Jericho	<i>A. jerichoensis</i> (+c, s)
Wiregrass, many-headed	<i>A. caput-medusae</i> (+ s)
Wiregrass, purple	<i>A. ramosa</i> (+ c, s)

+ indicates that this species increases under heavy grazing; - indicates this species decreases under heavy grazing;

* indicates exotic species. The intermediate value rating applies to a species in its relevant soil type.

Other important plants

Native legumes

Birdsville indigo
Glycine, hairy
Glycine pea
Rhynchosia
Tick trefoil

Indigofera linnaei
Glycine tomentella
Glycine tabacina
Rhynchosia minima
Desmodium varians

Broad-leaved weeds indicating heavy grazing

Flannelweeds
Fruit salad plant
Mexican poppy
Pigweed

Sida and *Abutilon* spp.
Pterocaulon redolens
Argemone ochroleuca
Portulaca spp.

Other problem plants

Currant/blackberry bush
Heartleaf
Limebush
Mimosa bush
Mother-of-millions
Parkinsonia
Parthenium
Pimelea
Rubbervine

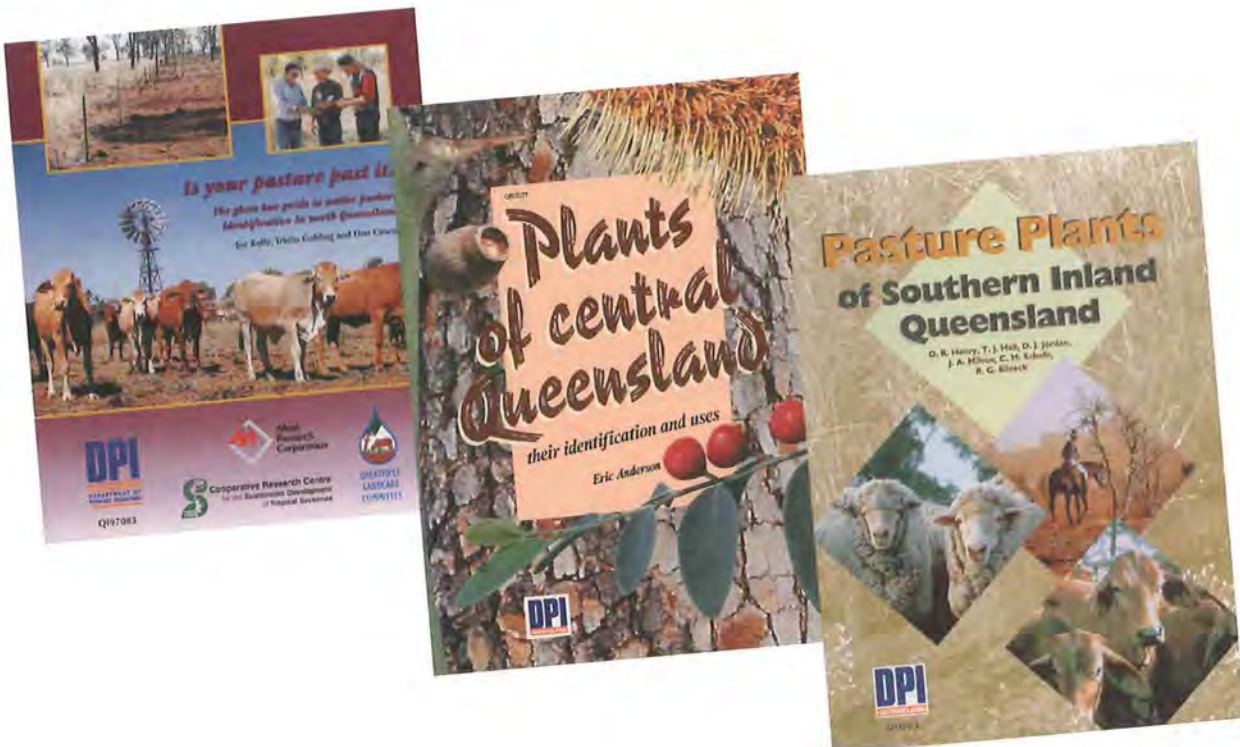
Carissa ovata
Gastrolobium grandiflorum (n)
Eremocitrus glauca
Acacia farnesiana
Bryophyllum spp.
Parkinsonia aculeata (n)
Parthenium hysterophorus
Pimelea spp. (s)
Cryptostegia grandiflora (n)

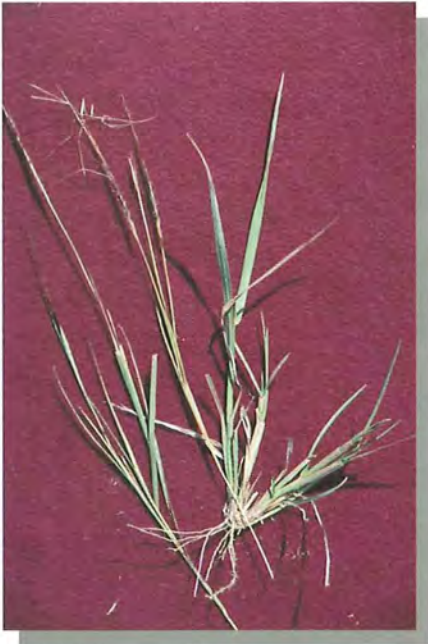
Many of these plants are illustrated and described in:

Is your pasture past it? for the northern region,

Plants of central Queensland: their identification and uses for central Queensland,

Pasture plants of southern inland Queensland for the south.

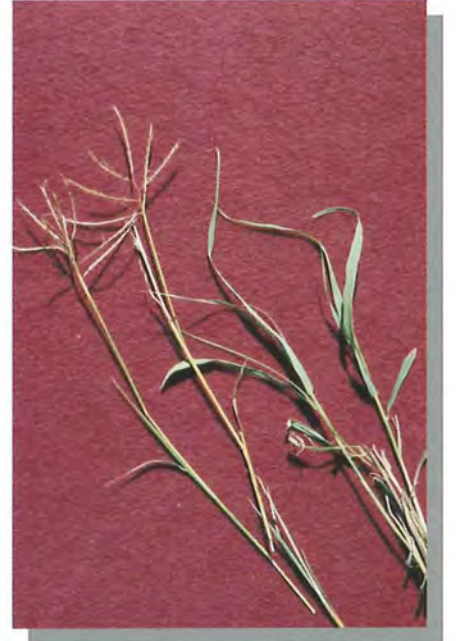




Black speargrass



Buffel grass



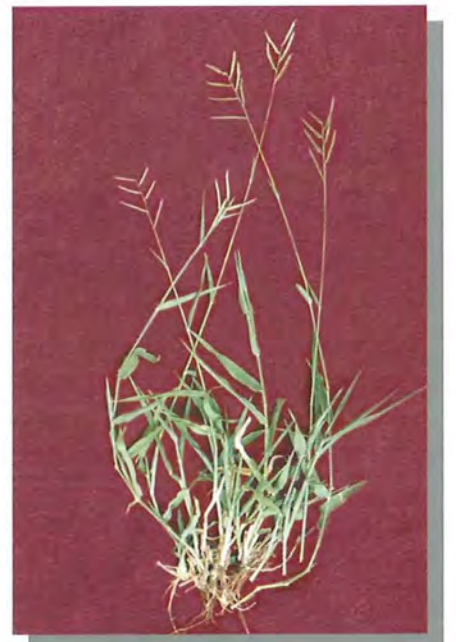
*Desert bluegrass
(forest mitchell)*



Forest bluegrass



Queensland bluegrass



Sabi grass



Kangaroo grass



*Indian bluegrass
(Indian couch)*



Early spring grass



Golden beard grass



Finger grass



*Fairy grass
(S. caroli)*



*Leafy nine-awn grass or
bottle washer*



Liverseed grass



Woodland love grass



Mulga Mitchell



Hairy panic



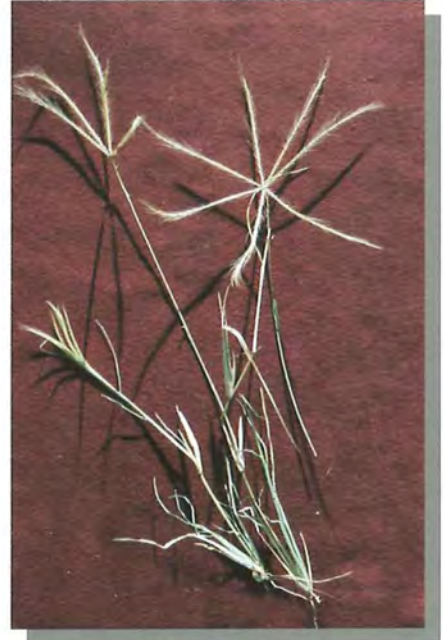
Pitted bluegrass



Poverty grass



Silky brown top



Slender chloris



Twirly windmill grass



Button grass



Comet grass



Native couch



Small burr grass



Fairy grass
(*S. australasicus*)



Five minute grass



Rats tail grass



Red Natal grass



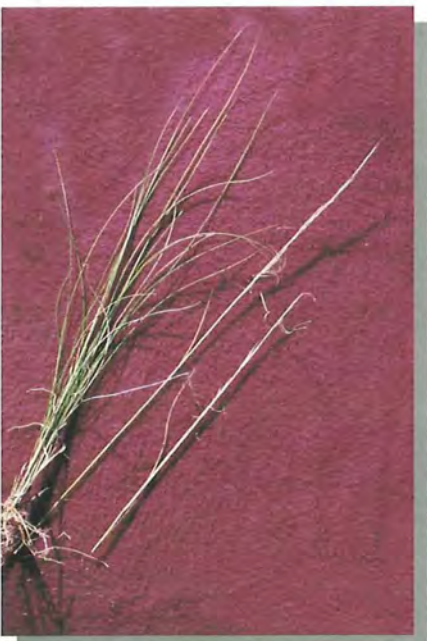
Sedge (Fimbristylis sp.)



Sedge (Cyperus sp.)



Barbwire grass



Rough speargrass



Slender bamboo grass



One-seed grass



Dark wiregrass



Jericho wiregrass



Feathertop wiregrass



Many-headed wiregrass



Purple wiregrass



Granite lovegrass