

# Softwood scrub



<b>Landform</b>	Undulating plains and tablelands.
<b>Woody vegetation</b>	Wilga, bottletree, bauhinia and Crow's ash, acacia and other softwood scrub species. Understorey of croton, holly bush, lolly bush and currant bush.
<b>Expected pasture composition</b>	<i>In an uncleared state, there is little grass.</i> * Denotes non-native "Expected Pasture Composition" species
Preferred	Buffel grass*, urochloa*.
Intermediate	Brigalow grass.
Non-preferred	Lovegrasses.
Common forbs	Non-preferred species include jack bean.
<b>Suitable sown pastures</b>	Buffel grass, green panic, urochloa, creeping bluegrass, Rhodes grass, butterfly pea, leucaena, Shrubby stylo, Caribbean stylo, Caatinga stylo.
<b>Introduced weeds</b>	Parthenium, lantana, rubbervine, chinee apple, bellyache bush.
<b>Soil</b>	Brown clays (vertosols, chromosols), deep red clays (ferrosols) and deep red earths (kandosols) and earthy sands (tenosols).
Description	<b>Surface:</b> Weak self-mulching, scattering of stone (brown clays), or friable (red clays), or sands (red earths). <b>Surface texture:</b> light to medium clay (brown clays), clay loam to light clay (red clays) to sands (red earths); <b>Subsoil texture:</b> medium clay except deep sands.
Water availability	Low (deep sands) to high (brown clays).
Rooting depth	Between 30 to 90 cm (brown clays) to >1 m (red clays).
Fertility	Low to moderate.

Salinity

Nil (red clays), low (brown clays).

Sodicity

Non-sodic

pH

Strongly alkaline (brown clays) to acid (deep sands).

### Long-term carrying capacity information (A condition)

Based on fully watered area for 1AE = 450 kg animal consuming 8kg DM/day				
Median annual rainfall 553 – 748 mm				
Pasture type	Median tree cover (TBA m <sup>2</sup> /ha) (FPC %)	Median annual pasture growth (DM kg/ha)	Safe annual utilisation pasture growth (%)	LTCC (ha/AE)
Native species	0 TBA/FPC	2640 - 4810	30%	3.3 - 3.7
	14 TBA 34 FPC	660 - 2220	30%	12 – 15
Buffel	0 TBA/FPC	4170 - 7300	35%	1.1 – 2.0

### Enterprise

Finishing

### Land use and management recommendations

- Most areas of softwood scrub have been cleared and established to improved pastures in the south; remnant areas are present in the north.
- Maintain vegetation belts for wildlife habitats and corridors.
- Lantana, rubbervine, chinee apple and bellyache bush need to be controlled using a combination of herbicides and fire in sown pastures, or targeted use of herbicides in remnant areas.
- Groundwater recharge areas

### Land use limitations

- Regrowth of some species.
- Surface sealing soils.
- Limited soil erosion hazard. Prone to sheet, rill and gully erosion along tracks and fence lines and on sloping lands.

### Conservation features and related management

- Much of these softwood scrub communities have been extensively cleared for cropping and grazing. Remnant areas provide regional refugia for a wide diversity of flora and fauna species, some species with disjunct distributions.
- Habitat for rare and threatened flora species including *Fontainea fugax*, *Macropteranthes leiocaulis*, *Pomaderris clivicola* and *Cadellia pentastylis*.
- Some communities include caves that support specialised flora and fauna (particularly bats that use the caves for breeding). The rare species *Alectryon tropicus* and *Atalaya calcicola* are associated with these communities.
- Remnants are subject to invasion by weeds.

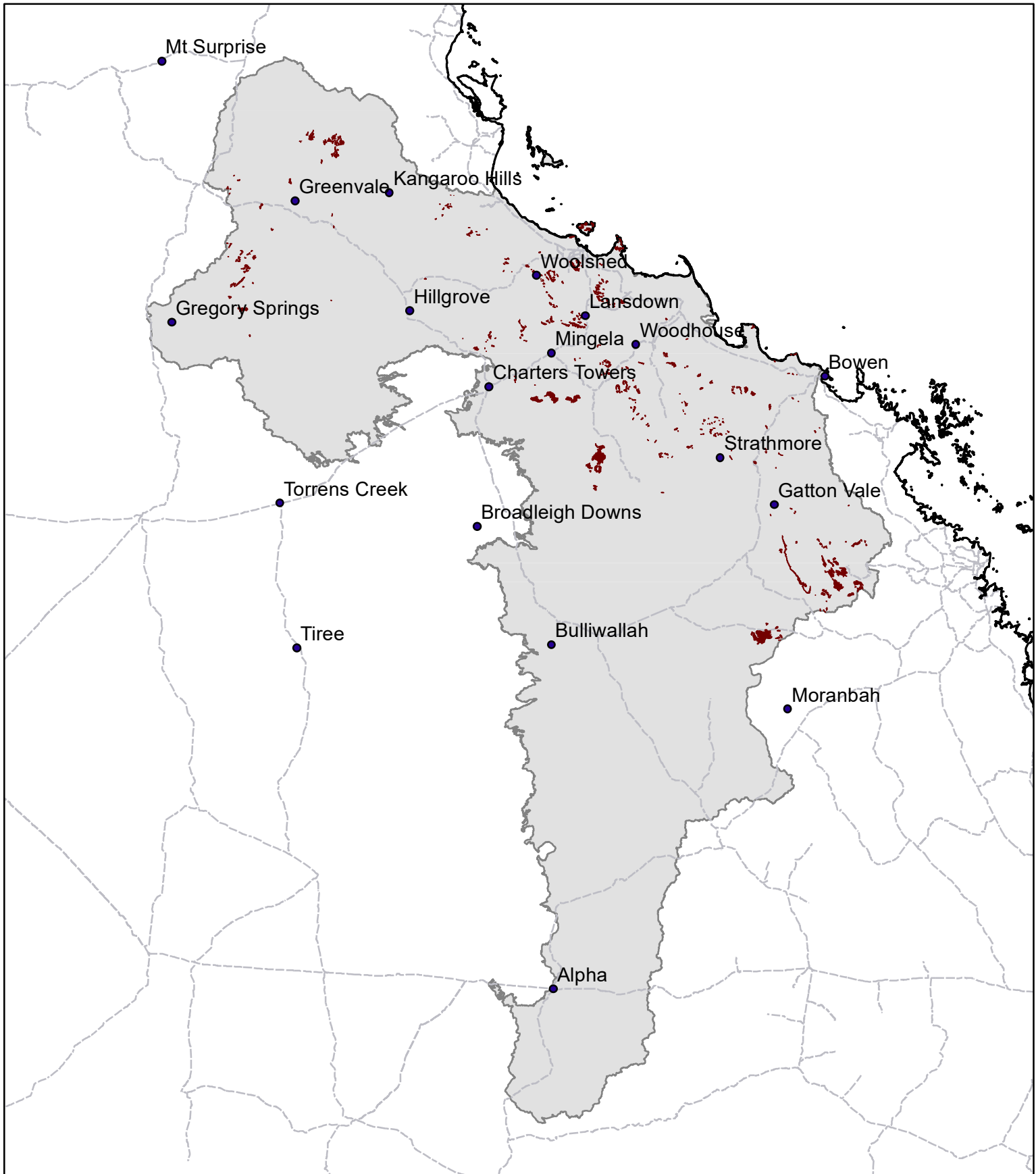
### Regional Ecosystems

2.5.21, 2.9.3a, 7.12.11c, 7.12.13, 7.12.46a-b, 7.12.47a-b, 7.12.48, 7.12.49, 7.12.50, 9.11.8a-b, 9.11.9, 9.12.34, 9.12.8a-b, 9.5.2, 9.8.3, 9.8.7, 11.3.11x1, 11.5.15, 11.7.1x1, 11.9.4a.

### Land units; Agricultural management unit; Soil associations

Land units (Gunn *et al* 1967; Story *et al* 1967) Cungelella 2 & 3, Kareela 2, Wharton 2, Bedourie 3, Racecourse 1; AMU (DPI 1993) Duckponds, Glen Idol. Soil Associations (Rogers *et al* 1999) Pentland, Limeview, Rangeside, Rishton.

# BD19 Softwood scrub



Area of land type in region: 1%  
Median rainfall (region): 440 – 981 mm  
Average rainfall (region): 476 – 1112 mm  
Area of land type with FPC: 81%  
Median FPC: 34%  
Median TBA: 14 m<sup>2</sup>/ha



**Queensland**  
Government