

# LAO PEOPLE'S DEMOCRATIC REPUBLIC SELECTED PLANTS of ATTAPEU PROVINCE

Djaja Doel Soejarto<sup>1,2</sup>, Bethany Elkington<sup>1,2</sup>, Kongmany Sydara<sup>3</sup>, Onelivay Souliya<sup>3</sup>, and Mouachanh Xayveu<sup>3</sup>  
<sup>1</sup>University of Illinois at Chicago, <sup>2</sup>Field Museum of Natural History, <sup>3</sup>Institute of Traditional Medicine, Vientiane, Lao PDR

Photos by: D. D. Soejarto

Produced with support from the Program Project Grant P01-CA125066 (2007-2019) from the National Cancer Institute, National Institutes of Health, Bethesda, Maryland, U.S.A.; the Ohio State University, Columbus Ohio; the University of Illinois at Chicago and the Field Museum, Chicago, USA.

© Doel Soejarto [dsoejarto@fieldmuseum.org], Bethany Elkington, and Kongmany Sydara.

[fieldguides.fieldmuseum.org] [998] version 1 4/2018



Medicinal Biodiversity Preserve



Regenerated Dipterocarp forest



Tropical rain forest

The following images are preserved as voucher herbarium specimens in deposit at the Herbarium of the Institute of Traditional Medicine in Vientiane (Lao People's Democratic Republic) and at the J. D. Searle Herbarium of the Field Museum of Natural History (Chicago, USA). They were collected as part of a project in the discovery of anticancer agents from plants. Collections were made primarily in secondary forest in the Attapeu Medicinal Biodiversity Preserve and surrounding areas located at various distances from the capital city of Attapeu. Sporadic collections were also made in other locations throughout Attapeu Province, in degraded forest, regenerating Dipterocarp forest, remnants of evergreen forest, and at the edges of primary tropical rainforest.

This research was performed under a collaborative agreement between the University of Illinois at Chicago and the Institute of Traditional Medicine of the Ministry of Health of Laos.

<p>1 <i>Phlogacanthus datii</i> 15332 ACANTHACEAE</p>			<p>2 <i>Ancistrocladus cochinchinensis</i> 15276 ANCISTROCLADACEAE</p>	
<p>3 <i>Polyalthia corticosa</i> 15317 ANNONACEAE</p>				<p>4 <i>Uvaria cordata</i> 15293 ANNONACEAE</p>

# LAO PEOPLE'S DEMOCRATIC REPUBLIC SELECTED PLANTS of ATTAPEU PROVINCE

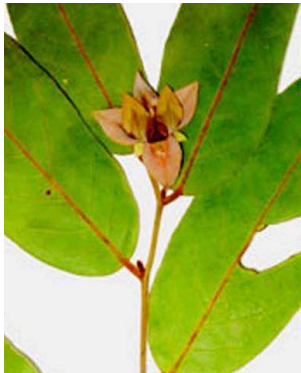
Djaja Doel Soejarto<sup>1,2</sup>, Bethany Elkington<sup>1,2</sup>, Kongmany Sydara<sup>3</sup>, Onelivay Souliya<sup>3</sup>, and Mouachanh Xayveu<sup>3</sup>  
<sup>1</sup>University of Illinois at Chicago, <sup>2</sup>Field Museum of Natural History, <sup>3</sup>Institute of Traditional Medicine, Vientiane, Lao PDR

Photos by: D. D. Soejarto

Produced with support from the Program Project Grant P01-CA125066 (2007-2019) from the National Cancer Institute, National Institutes of Health, Bethesda, Maryland, U.S.A.; the Ohio State University, Columbus Ohio; the University of Illinois at Chicago and the Field Museum, Chicago, USA.

© Doel Soejarto [dsoejarto@fieldmuseum.org], Bethany Elkington, and Kongmany Sydara.

[fieldguides.fieldmuseum.org] [998] version 1 4/2018



4 *Uvaria cordata* 15293  
ANNONACEAE

5 *Uvaria dac* 15336  
ANNONACEAE

6 *Cryptolepis* cf. *sinensis*  
APOCYNACEAE



6 *Cryptolepis* cf. *sinensis* 15319  
APOCYNACEAE

7 *Gymnema sylvestre* s.n.  
APOCYNACEAE



8 *Holarrhena pubescens* 15287  
APOCYNACEAE

9 *Ixodonerium annamense* s.n.  
APOCYNACEAE



9 *Ixodonerium annamense*  
APOCYNACEAE

10 *Ilex memecylifolia* 15299  
AQUIFOLIACEAE

11 *Schefflera* cf. *elliptica* 15295  
ARALIACEAE

# LAO PEOPLE'S DEMOCRATIC REPUBLIC SELECTED PLANTS of ATTAPEU PROVINCE

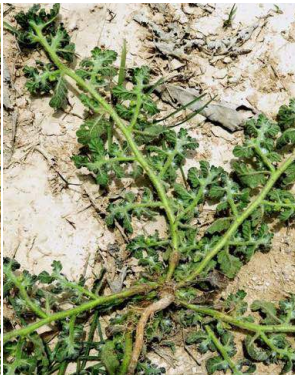
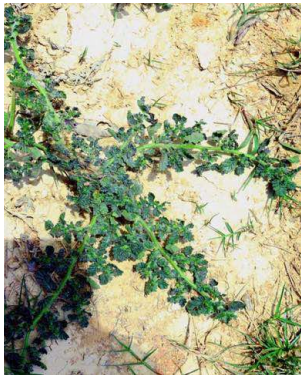
Djaja Doel Soejarto<sup>1,2</sup>, Bethany Elkington<sup>1,2</sup>, Kongmany Sydara<sup>3</sup>, Onelivay Souliya<sup>3</sup>, and Mouachanh Xayveu<sup>3</sup>  
<sup>1</sup>University of Illinois at Chicago, <sup>2</sup>Field Museum of Natural History, <sup>3</sup>Institute of Traditional Medicine, Vientiane, Lao PDR

Photos by: D. D. Soejarto

Produced with support from the Program Project Grant P01-CA125066 (2007-2019) from the National Cancer Institute, National Institutes of Health, Bethesda, Maryland, U.S.A.; the Ohio State University, Columbus Ohio; the University of Illinois at Chicago and the Field Museum, Chicago, USA.

© Doel Soejarto [dsoejarto@fieldmuseum.org], Bethany Elkington, and Kongmany Sydara.

[fieldguides.fieldmuseum.org] [998] version 1 4/2018



12 *Coldenia procumbens* 15314  
BORAGINACEAE

13 *Crateva unilocularis* 15313  
CAPPARACEAE



13 *Crateva unilocularis*  
CAPPARACEAE

14 *Parinari annamensis* 15291  
CHRYSOBALANACEAE



15 *Calophyllum calaba* 15297  
CLUSIACEAE

16 *Cratoxylum* sp. 15316  
CLUSIACEAE



17 *Garcinia cf. cowa* 15338  
CLUSIACEAE

18 *Garcinia gracilis* 15301  
CLUSIACEAE

19 *Combretum punctatum*  
COMBRETACEAE

# LAO PEOPLE'S DEMOCRATIC REPUBLIC SELECTED PLANTS of ATTAPEU PROVINCE

Djaja Doel Soejarto<sup>1,2</sup>, Bethany Elkington<sup>1,2</sup>, Kongmany Sydara<sup>3</sup>, Onelivay Souliya<sup>3</sup>, and Mouachanh Xayveu<sup>3</sup>  
<sup>1</sup>University of Illinois at Chicago, <sup>2</sup>Field Museum of Natural History, <sup>3</sup>Institute of Traditional Medicine, Vientiane, Lao PDR

Photos by: D. D. Soejarto

Produced with support from the Program Project Grant P01-CA125066 (2007-2019) from the National Cancer Institute, National Institutes of Health, Bethesda, Maryland, U.S.A.; the Ohio State University, Columbus Ohio; the University of Illinois at Chicago and the Field Museum, Chicago, USA.

© Doel Soejarto [dsoejarto@fieldmuseum.org], Bethany Elkington, and Kongmany Sydara.

[fieldguides.fieldmuseum.org] [998] version 1 4/2018



19 *Combretum punctatum* 15312  
COMBRETACEAE

20 *Terminalia corticosa* 15285  
COMBRETACEAE



20 *Terminalia corticosa*  
COMBRETACEAE

21 *Merremia boisiana* 15275  
CONVOLVULACEAE

22 *Dipterocarpus intricatus* 15310  
DIPTEROCARPACEAE



22 *Dipterocarpus intricatus*  
DIPTEROCARPACEAE

23 *Dipterocarpus tuberculatus* 15327  
DIPTEROCARPACEAE



24 *Shorea guiso* 15286  
DIPTEROCARPACEAE

25 *Elaeocarpus bonii* 15323  
ELAEOCARPACEAE

# LAO PEOPLE'S DEMOCRATIC REPUBLIC SELECTED PLANTS of ATTAPEU PROVINCE

Djaja Doel Soejarto<sup>1,2</sup>, Bethany Elkington<sup>1,2</sup>, Kongmany Sydara<sup>3</sup>, Onelivay Souliya<sup>3</sup>, and Mouachanh Xayveu<sup>3</sup>  
<sup>1</sup>University of Illinois at Chicago, <sup>2</sup>Field Museum of Natural History, <sup>3</sup>Institute of Traditional Medicine, Vientiane, Lao PDR

Photos by: D. D. Soejarto

Produced with support from the Program Project Grant P01-CA125066 (2007-2019) from the National Cancer Institute, National Institutes of Health, Bethesda, Maryland, U.S.A.; the Ohio State University, Columbus Ohio; the University of Illinois at Chicago and the Field Museum, Chicago, USA.

© Doel Soejarto [dsoejarto@fieldmuseum.org], Bethany Elkington, and Kongmany Sydara.

[fieldguides.fieldmuseum.org] [998] version 1 4/2018



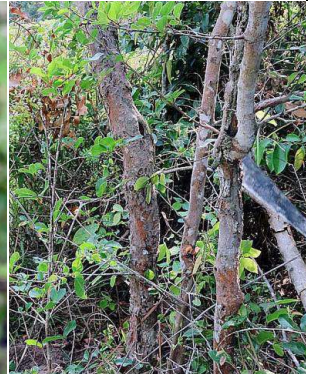
25 *Elaeocarpus bonii*  
ELAEOCARPACEAE



26 *Breynea retusa* 15345  
EUPHORBIACEAE



27 *Glochidion balansae* 15290  
EUPHORBIACEAE



28 *Hymenocardia punctata*  
EUPHORBIACEAE



28 *Hymenocardia punctata* s.n.  
EUPHORBIACEAE



29 *Mallotus* cf. *repandus*  
EUPHORBIACEAE



29 *Mallotus* cf. *repandus* 15326  
EUPHORBIACEAE



30 *Suregada multiflora*  
EUPHORBIACEAE

# LAO PEOPLE'S DEMOCRATIC REPUBLIC SELECTED PLANTS of ATTAPEU PROVINCE

Djaja Doel Soejarto<sup>1,2</sup>, Bethany Elkington<sup>1,2</sup>, Kongmany Sydara<sup>3</sup>, Onelivay Souliya<sup>3</sup>, and Mouachanh Xayveu<sup>3</sup>  
<sup>1</sup>University of Illinois at Chicago, <sup>2</sup>Field Museum of Natural History, <sup>3</sup>Institute of Traditional Medicine, Vientiane, Lao PDR

Photos by: D. D. Soejarto

Produced with support from the Program Project Grant P01-CA125066 (2007-2019) from the National Cancer Institute, National Institutes of Health, Bethesda, Maryland, U.S.A.; the Ohio State University, Columbus Ohio; the University of Illinois at Chicago and the Field Museum, Chicago, USA.

© Doel Soejarto [dsoejarto@fieldmuseum.org], Bethany Elkington, and Kongmany Sydara.

[fieldguides.fieldmuseum.org] [998] version 1 4/2018



30 *Suregada multiflora* 15281  
EUPHORBIACEAE

31 *Bauhinia mastipoda* 15273  
FABACEAE-CAESALPINIOIDEAE



32 *Xylia xylocarpa* 15318  
FABACEAE-MIMOSOIDEAE

33 *Dalbergia burmanica* 15278  
FABACEAE-PAPILIONOIDEAE



33 *Dalbergia burmanica*  
FABACEAE-PAPIL.

34 *Derris ferruginea* 15277  
FABACEAE-PAPILIONOIDEAE

35 *Millettia pubinervis*  
FABACEAE-PAPIL.



35 *Millettia pubinervis* 15339  
FABACEAE-PAPILIONOIDEAE

36 *Hydnocarpus ilicifolia* 15305  
FLACOURTIACEAE

# LAO PEOPLE'S DEMOCRATIC REPUBLIC SELECTED PLANTS of ATTAPEU PROVINCE

Djaja Doel Soejarto<sup>1,2</sup>, Bethany Elkington<sup>1,2</sup>, Kongmany Sydara<sup>3</sup>, Onelivay Souliya<sup>3</sup>, and Mouachanh Xayveu<sup>3</sup>  
<sup>1</sup>University of Illinois at Chicago, <sup>2</sup>Field Museum of Natural History, <sup>3</sup>Institute of Traditional Medicine, Vientiane, Lao PDR

Photos by: D. D. Soejarto

Produced with support from the Program Project Grant P01-CA125066 (2007-2019) from the National Cancer Institute, National Institutes of Health, Bethesda, Maryland, U.S.A.; the Ohio State University, Columbus Ohio; the University of Illinois at Chicago and the Field Museum, Chicago, USA.

© Doel Soejarto [dsoejarto@fieldmuseum.org], Bethany Elkington, and Kongmany Sydara.

[fieldguides.fieldmuseum.org] [998] version 1 4/2018



37 *Litsea* sp. 15333  
LAURACEAE

38 *Careya arborea* 15308  
LECYTHIDACEAE



38 *Careya arborea* s.n.  
LECYTHIDACEAE

39 *Strychnos nux-blanda* 15284  
LOGANIACEAE

40 *Hiptage boniana* 15315  
MALPIGHIACEAE



40 *Hiptage boniana*  
MALPIGHIACEAE

41 *Azadirachta indica* 15289  
MELIACEAE



42 *Syzygium leptanthum* 15330  
MYRTACEAE

43 *Olax imbricata* 15304  
OLACACEAE

# LAO PEOPLE'S DEMOCRATIC REPUBLIC SELECTED PLANTS of ATTAPEU PROVINCE

Djaja Doel Soejarto<sup>1,2</sup>, Bethany Elkington<sup>1,2</sup>, Kongmany Sydara<sup>3</sup>, Onelivay Souliya<sup>3</sup>, and Mouachanh Xayveu<sup>3</sup>  
<sup>1</sup>University of Illinois at Chicago, <sup>2</sup>Field Museum of Natural History, <sup>3</sup>Institute of Traditional Medicine, Vientiane, Lao PDR

Photos by: D. D. Soejarto

Produced with support from the Program Project Grant P01-CA125066 (2007-2019) from the National Cancer Institute, National Institutes of Health, Bethesda, Maryland, U.S.A.; the Ohio State University, Columbus Ohio; the University of Illinois at Chicago and the Field Museum, Chicago, USA.

© Doel Soejarto [dsoejarto@fieldmuseum.org], Bethany Elkington, and Kongmany Sydara.

[fieldguides.fieldmuseum.org] [998] version 1 4/2018



43 *Olax imbricata* 15304  
OLACACEAE

44 *Canthium glabrum* 15342  
RUBIACEAE



44 *Canthium glabrum*  
RUBIACEAE

45 *Gardenia sootepensis* 15282  
RUBIACEAE

46 *Ixora* sp. 15340  
RUBIACEAE



46 *Ixora* sp. 15340  
RUBIACEAE

47 *Randia fasciculata* 15331  
RUBIACEAE



47 *Randia fasciculata*  
RUBIACEAE

48 *Randia turgida* 15288  
RUBIACEAE



# LAO PEOPLE'S DEMOCRATIC REPUBLIC SELECTED PLANTS of ATTAPEU PROVINCE

Djaja Doel Soejarto<sup>1,2</sup>, Bethany Elkington<sup>1,2</sup>, Kongmany Sydara<sup>3</sup>, Onelivay Souliya<sup>3</sup>, and Mouachanh Xayveu<sup>3</sup>  
<sup>1</sup>University of Illinois at Chicago, <sup>2</sup>Field Museum of Natural History, <sup>3</sup>Institute of Traditional Medicine, Vientiane, Lao PDR

Photos by: D. D. Soejarto

Produced with support from the Program Project Grant P01-CA125066 (2007-2019) from the National Cancer Institute, National Institutes of Health, Bethesda, Maryland, U.S.A.; the Ohio State University, Columbus Ohio; the University of Illinois at Chicago and the Field Museum, Chicago, USA.

© Doel Soejarto [dsoejarto@fieldmuseum.org], Bethany Elkington, and Kongmany Sydara.

[fieldguides.fieldmuseum.org] [1998] version 1 4/2018



48 *Randia turgida* 15288  
RUBIACEAE



49 *Rothmannia wittii* 15280, 15328  
RUBIACEAE



50 *Tarenna hoensis*  
RUBIACEAE



50 *Tarenna hoensis* 15334  
RUBIACEAE



51 *Urophyllum streptopodium* 15309  
RUBIACEAE



51 *Urophyllum streptopodium* 15309  
RUBIACEAE



52 *Harrisonia perforata* S.Π.  
SIMAROUACEAE



53 *Stemona tuberosa* 15320  
STEMONACEAE



54 *Helicteres hirsuta* 15274  
STERCULIACEAE



# LAO PEOPLE'S DEMOCRATIC REPUBLIC SELECTED PLANTS of ATTAPEU PROVINCE

Djaja Doel Soejarto<sup>1,2</sup>, Bethany Elkington<sup>1,2</sup>, Kongmany Sydara<sup>3</sup>, Onelivay Souliya<sup>3</sup>, and Mouachanh Xayveu<sup>3</sup>  
<sup>1</sup>University of Illinois at Chicago, <sup>2</sup>Field Museum of Natural History, <sup>3</sup>Institute of Traditional Medicine, Vientiane, Lao PDR

Photos by: D. D. Soejarto

Produced with support from the Program Project Grant P01-CA125066 (2007-2019) from the National Cancer Institute, National Institutes of Health, Bethesda, Maryland, U.S.A.; the Ohio State University, Columbus Ohio; the University of Illinois at Chicago and the Field Museum, Chicago, USA.

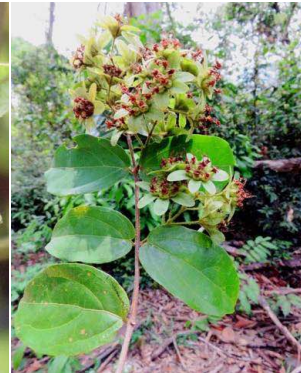
© Doel Soejarto [dsoejarto@fieldmuseum.org], Bethany Elkington, and Kongmany Sydara.

[fieldguides.fieldmuseum.org] [998] version 1 4/2018



55

*Enkleia siamensis* 15306  
 THYMELAEACEAE



56

*Sphenodesme ferruginea* 15324  
 VERBENACEAE

57

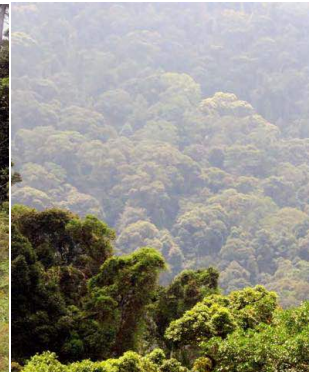
*Sphenodesme thorelii* 15335  
 VERBENACEAE



58

*Cissus repens* 15322  
 VITACEAE

Regenerating dipterocarp forest



Map of Attapeu (Wikipedia)

Degraded forest  
 Human intervention

Humid tropical rainforest  
 near the border with Vietnam