

Santa Lucía Reserve, Quito, Pichincha, ECUADOR

Plants of Santa Lucía Reserve visited by hummingbirds

Francisco Tobar^{1,4}, Holger Beck⁵, María José Gavilanes¹, Tatiana Santander G.¹, Álvaro J. Pérez³, Daniela Cevallos³, Nicolás Zapata³ & Catherine H. Graham²

¹BirdLife en Ecuador, ²Biodiversity and Conservation Biology Unit, Swiss Federal Research Institute, ³Herbario QCA, Pontificia Universidad Católica del Ecuador, ⁴Herbario Nacional del Ecuador, ⁵Santa Lucía Reserve

Photos: F. Tobar [pacotobar76@hotmail.com], Holger Beck, and Aves y Conservación. Produced by the authors with the assistance of Rayane Ribeiro, Field Museum. Acknowledgment: Swiss Federal Research Institute (WSL), National Geographic Society (Grant N° 9952-16), Swiss National Science Foundation (SNF Grant N° 173342), European Research Council Advanced Grants (ERC Grant N° 787638), Aves y Conservación/BirdLife in Ecuador, Rufford Foundation, and Santa Lucía Reserve. Legend: ♀ - female, ♂ - male.

© Field Museum (2022) CC BY-NC 4.0. Licensed works are free to use/share/remix with attribution, but commercial use of the original work is not permitted.

[fieldguides.fieldmuseum.org] [1460] version 1 8/2022



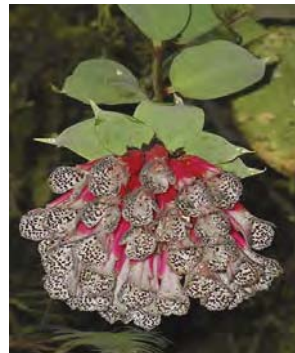
The Santa Lucía Reserve is located in northwestern Ecuador, covering 730 hectares of mostly primary cloud forest. It is run by a community of twelve families that switched from engaging in mainly agricultural activities to sustainable practices 20 years ago. Income is generated through ecotourism and scientific research. The reserve hosts various types of vegetation and ranges across elevations from 1400 to 2500 meters above sea level. In the course of the Ecology of Plant Hummingbird Interactions Project (EPHI) we collected data on two transects ranging from 1750 to 2500 meters of altitude. A total of 26 hummingbird species feeding on 102 plant species were recorded. We would like to thank the Santa Lucía community and staff for their support. We are grateful in particular to Noé Morales and Edison Tapia for their crucial help with camera placement.



1 *Bomarea multiflora*
ALSTROEMERIACEAE



2 *Bomarea multiflora*
ALSTROEMERIACEAE



3 *Bomarea pardina*
ALSTROEMERIACEAE



4 *Mikania* sp.
ASTERACEAE



5 *Guzmania bakeri*
BROMELIACEAE



6 *Guzmania bakeri*
BROMELIACEAE



7 *Guzmania bracteosa*
BROMELIACEAE



8 *Guzmania danielii*
BROMELIACEAE



9 *Guzmania danielii*
BROMELIACEAE



10 *Guzmania gloriosa*
BROMELIACEAE

Santa Lucía Reserve, Quito, Pichincha, ECUADOR

Plants of Santa Lucía Reserve visited by hummingbirds

Francisco Tobar^{1,4}, Holger Beck⁵, María José Gavilanes¹, Tatiana Santander G.¹, Álvaro J. Pérez³, Daniela Cevallos³, Nicolás Zapata³ & Catherine H. Graham²

¹BirdLife en Ecuador, ²Biodiversity and Conservation Biology Unit, Swiss Federal Research Institute, ³Herbario QCA, Pontificia Universidad Católica del Ecuador, ⁴Herbario Nacional del Ecuador, ⁵Santa Lucía Reserve

Photos: F. Tobar [pacotobar76@hotmail.com], Holger Beck, and Aves y Conservación. Produced by the authors with the assistance of Rayane Ribeiro, Field Museum. Acknowledgment: Swiss Federal Research Institute (WSL), National Geographic Society (Grant N° 9952-16), Swiss National Science Foundation (SNF Grant N° 173342), European Research Council Advanced Grants (ERC Grant N° 787638), Aves y Conservación/BirdLife in Ecuador, Rufford Foundation, and Santa Lucía Reserve. Legend: ♀ - female, ♂ - male.



© Field Museum (2022) CC BY-NC 4.0. Licensed works are free to use/share/remix with attribution, but commercial use of the original work is not permitted.

[fieldguides.fieldmuseum.org]

[1460] version 1 8/2022



11 *Guzmania gloriosa*
BROMELIACEAE



12 *Guzmania jaramilloi*
BROMELIACEAE



13 *Guzmania jaramilloi*
BROMELIACEAE



14 *Guzmania lehmanniana*
BROMELIACEAE



15 *Guzmania lehmanniana*
BROMELIACEAE



16 *Guzmania squarrosa*
BROMELIACEAE



17 *Guzmania teuscheri*
BROMELIACEAE



18 *Guzmania teuscheri*
BROMELIACEAE



19 *Guzmania xanthobractea*
BROMELIACEAE



20 *Guzmania xanthobractea*
BROMELIACEAE



21 *Mezobromelia capituligera*
BROMELIACEAE



22 *Mezobromelia lyman-smithii*
BROMELIACEAE



23 *Mezobromelia lyman-smithii*
BROMELIACEAE



24 *Pitcairnia fusca*
BROMELIACEAE



25 *Pitcairnia fusca*
BROMELIACEAE



26 *Pitcairnia nigra*
BROMELIACEAE



27 *Pitcairnia nigra*
BROMELIACEAE



28 *Pitcairnia sodiroi*
BROMELIACEAE



29 *Pitcairnia sodiroi*
BROMELIACEAE



30 *Tillandsia complanata*
BROMELIACEAE

Santa Lucía Reserve, Quito, Pichincha, ECUADOR

Plants of Santa Lucía Reserve visited by hummingbirds

Francisco Tobar^{1,4}, Holger Beck⁵, María José Gavilanes¹, Tatiana Santander G.¹, Álvaro J. Pérez³, Daniela Cevallos³, Nicolás Zapata³ & Catherine H. Graham²

¹BirdLife en Ecuador, ²Biodiversity and Conservation Biology Unit, Swiss Federal Research Institute, ³Herbario QCA, Pontificia Universidad Católica del Ecuador, ⁴Herbario Nacional del Ecuador, ⁵Santa Lucía Reserve

Photos: F. Tobar [pacotobar76@hotmail.com], Holger Beck, and Aves y Conservación. Produced by the authors with the assistance of Rayane Ribeiro, Field Museum. Acknowledgment: Swiss Federal Research Institute (WSL), National Geographic Society (Grant N° 9952-16), Swiss National Science Foundation (SNF Grant N° 173342), European Research Council Advanced Grants (ERC Grant N° 787638), Aves y Conservación/BirdLife in Ecuador, Rufford Foundation, and Santa Lucía Reserve. Legend: ♀ - female, ♂ - male.



© Field Museum (2022) CC BY-NC 4.0. Licensed works are free to use/share/remix with attribution, but commercial use of the original work is not permitted.

[fieldguides.fieldmuseum.org]

[1460] version 1 8/2022



31 *Tillandsia complanata*
BROMELIACEAE



32 *Burmeistera crispiloba*
CAMPANULACEAE



33 *Burmeistera crispiloba*
CAMPANULACEAE



34 *Burmeistera cylindrocarpa*
CAMPANULACEAE



35 *Burmeistera cylindrocarpa*
CAMPANULACEAE



36 *Burmeistera multiflora*
CAMPANULACEAE



37 *Burmeistera multiflora*
CAMPANULACEAE



38 *Burmeistera pterifolia*
CAMPANULACEAE



39 *Burmeistera pterifolia*
CAMPANULACEAE



40 *Centropogon llanganatensis*
CAMPANULACEAE



41 *Centropogon llanganatensis*
CAMPANULACEAE



42 *Centropogon nigricans*
CAMPANULACEAE



43 *Centropogon nigricans*
CAMPANULACEAE



44 *Centropogon solanifolius*
CAMPANULACEAE



45 *Centropogon solanifolius*
CAMPANULACEAE



46 *Vasconcellea microcarpa*
CARICACEAE



47 *Vasconcellea microcarpa*
CARICACEAE



48 *Podandrogine websteri*
CLEOMACEAE



49 *Podandrogine websteri*
CLEOMACEAE



50 *Clusia alata*
CLUSIACEAE

Santa Lucía Reserve, Quito, Pichincha, ECUADOR

Plants of Santa Lucía Reserve visited by hummingbirds

Francisco Tobar^{1,4}, Holger Beck⁵, María José Gavilanes¹, Tatiana Santander G.¹, Álvaro J. Pérez³, Daniela Cevallos³, Nicolás Zapata³ & Catherine H. Graham²

¹BirdLife en Ecuador, ²Biodiversity and Conservation Biology Unit, Swiss Federal Research Institute, ³Herbario QCA, Pontificia Universidad Católica del Ecuador, ⁴Herbario Nacional del Ecuador, ⁵Santa Lucía Reserve

Photos: F. Tobar [pacotobar76@hotmail.com], Holger Beck, and Aves y Conservación. Produced by the authors with the assistance of Rayane Ribeiro, Field Museum. Acknowledgment: Swiss Federal Research Institute (WSL), National Geographic Society (Grant N° 9952-16), Swiss National Science Foundation (SNF Grant N° 173342), European Research Council Advanced Grants (ERC Grant N° 787638), Aves y Conservación/BirdLife in Ecuador, Rufford Foundation, and Santa Lucía Reserve. Legend: ♀ - female, ♂ - male.



© Field Museum (2022) CC BY-NC 4.0. Licensed works are free to

use/share/remix with attribution, but commercial use of the original work is not permitted.

[fieldguides.fieldmuseum.org]

[1460] version 1 8/2022



51 *Clusia alata*
CLUSIACEAE



52 *Gurania macrophylla*
CUCURBITACEAE



53 *Gurania macrophylla*
CUCURBITACEAE



54 *Cavendishia grandifolia*
ERICACEAE



55 *Cavendishia grandifolia*
ERICACEAE



56 *Cavendishia tarapotana*
ERICACEAE



57 *Macleania bullata*
ERICACEAE



58 *Macleania macrantha*
ERICACEAE



59 *Macleania macrantha*
ERICACEAE



60 *Macleania recumbens*
ERICACEAE



61 *Psammisia aberrans*
ERICACEAE



62 *Psammisia aberrans*
ERICACEAE



63 *Psammisia ecuadorensis*
ERICACEAE



64 *Psammisia ecuadorensis*
ERICACEAE



65 *Psammisia oreogenes*
ERICACEAE



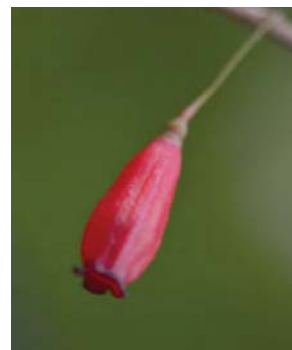
66 *Psammisia sodiroi*
ERICACEAE



67 *Psammisia ulbrichiana*
ERICACEAE



68 *Sphyrrosperrum grandifolium*
ERICACEAE



69 *Sphyrrosperrum grandifolium*
ERICACEAE



70 *Erythrina edulis*
FABACEAE

Santa Lucía Reserve, Quito, Pichincha, ECUADOR

Plants of Santa Lucía Reserve visited by hummingbirds

Francisco Tobar^{1,4}, Holger Beck⁵, María José Gavilanes¹, Tatiana Santander G.¹, Álvaro J. Pérez³, Daniela Cevallos³, Nicolás Zapata³ & Catherine H. Graham²

¹BirdLife en Ecuador, ²Biodiversity and Conservation Biology Unit, Swiss Federal Research Institute, ³Herbario QCA, Pontificia Universidad Católica del Ecuador, ⁴Herbario Nacional del Ecuador, ⁵Santa Lucía Reserve

Photos: F. Tobar [pacotobar76@hotmail.com], Holger Beck, and Aves y Conservación. Produced by the authors with the assistance of Rayane Ribeiro, Field Museum. Acknowledgment: Swiss Federal Research Institute (WSL), National Geographic Society (Grant N° 9952-16), Swiss National Science Foundation (SNF Grant N° 173342), European Research Council Advanced Grants (ERC Grant N° 787638), Aves y Conservación/BirdLife in Ecuador, Rufford Foundation, and Santa Lucía Reserve. Legend: ♀ - female, ♂ - male.



© Field Museum (2022) CC BY-NC 4.0. Licensed works are free to

use/share/remix with attribution, but commercial use of the original work is not permitted.

[fieldguides.fieldmuseum.org]

[1460] version 1 8/2022



71 *Erythrina megistophylla*
FABACEAE



72 *Besleria solanoides*
GESNERIACEAE



73 *Besleria solanoides*
GESNERIACEAE



74 *Columnnea angulata*
GESNERIACEAE



75 *Columnnea angulata*
GESNERIACEAE



76 *Columnnea byrsina*
GESNERIACEAE



77 *Columnnea ciliata*
GESNERIACEAE



78 *Columnnea ciliata*
GESNERIACEAE



79 *Columnnea katzensteiniae*
GESNERIACEAE



80 *Columnnea katzensteiniae*
GESNERIACEAE



81 *Columnnea kuczyniakii*
GESNERIACEAE



82 *Columnnea kuczyniakii*
GESNERIACEAE



83 *Columnnea medicinalis*
GESNERIACEAE



84 *Columnnea medicinalis*
GESNERIACEAE



85 *Columnnea ovatifolia*
GESNERIACEAE



86 *Columnnea ovatifolia*
GESNERIACEAE



87 *Columnnea picta*
GESNERIACEAE



88 *Columnnea picta*
GESNERIACEAE



89 *Columnnea strigosa*
GESNERIACEAE



90 *Columnnea strigosa*
GESNERIACEAE

Santa Lucía Reserve, Quito, Pichincha, ECUADOR

Plants of Santa Lucía Reserve visited by hummingbirds

Francisco Tobar^{1,4}, Holger Beck⁵, María José Gavilanes¹, Tatiana Santander G.¹, Álvaro J. Pérez³, Daniela Cevallos³, Nicolás Zapata³ & Catherine H. Graham²

¹BirdLife en Ecuador, ²Biodiversity and Conservation Biology Unit, Swiss Federal Research Institute, ³Herbario QCA, Pontificia Universidad Católica del Ecuador, ⁴Herbario Nacional del Ecuador, ⁵Santa Lucía Reserve

Photos: F. Tobar [pacotobar76@hotmail.com], Holger Beck, and Aves y Conservación. Produced by the authors with the assistance of Rayane Ribeiro, Field Museum. Acknowledgment: Swiss Federal Research Institute (WSL), National Geographic Society (Grant N° 9952-16), Swiss National Science Foundation (SNF Grant N° 173342), European Research Council Advanced Grants (ERC Grant N° 787638), Aves y Conservación/BirdLife in Ecuador, Rufford Foundation, and Santa Lucía Reserve. Legend: ♀ - female, ♂ - male.



© Field Museum (2022) CC BY-NC 4.0. Licensed works are free to

use/share/remix with attribution, but commercial use of the original work is not permitted.

[fieldguides.fieldmuseum.org]

[1460] version 1 8/2022



91 *Diastema racemiferum*
GESNERIACEAE



92 *Diastema racemiferum*
GESNERIACEAE



93 *Drymonia brochidodroma*
GESNERIACEAE



94 *Drymonia brochidodroma*
GESNERIACEAE



95 *Drymonia collegarum*
GESNERIACEAE



96 *Drymonia collegarum*
GESNERIACEAE



97 *Drymonia tenuis*
GESNERIACEAE



98 *Drymonia tenuis*
GESNERIACEAE



99 *Drymonia teuscheri*
GESNERIACEAE



100 *Drymonia teuscheri*
GESNERIACEAE



101 *Gasteranthus lateralis*
GESNERIACEAE



102 *Gasteranthus lateralis*
GESNERIACEAE



103 *Gasteranthus leopardus*
GESNERIACEAE



104 *Gasteranthus leopardus*
GESNERIACEAE



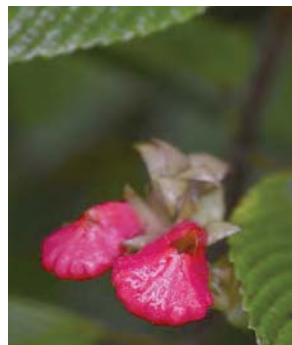
105 *Gasteranthus pansamalanus*
GESNERIACEAE



106 *Gasteranthus pansamalanus*
GESNERIACEAE



107 *Gasteranthus quitensis*
GESNERIACEAE



108 *Gasteranthus quitensis*
GESNERIACEAE



109 *Glossoloma herthae*
GESNERIACEAE



110 *Glossoloma herthae*
GESNERIACEAE

Santa Lucía Reserve, Quito, Pichincha, ECUADOR

Plants of Santa Lucía Reserve visited by hummingbirds

Francisco Tobar^{1,4}, Holger Beck⁵, María José Gavilanes¹, Tatiana Santander G.¹, Álvaro J. Pérez³, Daniela Cevallos³, Nicolás Zapata³ & Catherine H. Graham²

¹BirdLife en Ecuador, ²Biodiversity and Conservation Biology Unit, Swiss Federal Research Institute, ³Herbario QCA, Pontificia Universidad Católica del Ecuador, ⁴Herbario Nacional del Ecuador, ⁵Santa Lucía Reserve

Photos: F. Tobar [pacotobar76@hotmail.com], Holger Beck, and Aves y Conservación. Produced by the authors with the assistance of Rayane Ribeiro, Field Museum. Acknowledgment: Swiss Federal Research Institute (WSL), National Geographic Society (Grant N° 9952-16), Swiss National Science Foundation (SNF Grant N° 173342), European Research Council Advanced Grants (ERC Grant N° 787638), Aves y Conservación/BirdLife in Ecuador, Rufford Foundation, and Santa Lucía Reserve. Legend: ♀ - female, ♂ - male.



© Field Museum (2022) CC BY-NC 4.0. Licensed works are free to use/share/remix with attribution, but commercial use of the original work is not permitted.

[fieldguides.fieldmuseum.org]

[1460] version 1 8/2022



111 *Glossoloma oblongicalyx*
GESNERIACEAE



112 *Glossoloma oblongicalyx*
GESNERIACEAE



113 *Glossoloma subglabrum*
GESNERIACEAE



114 *Heppiella ulmifolia*
GESNERIACEAE



115 *Heppiella ulmifolia*
GESNERIACEAE



116 *Kohleria affinis*
GESNERIACEAE



117 *Kohleria affinis*
GESNERIACEAE



118 *Kohleria villosa*
GESNERIACEAE



119 *Kohleria villosa*
GESNERIACEAE



120 *Pachycaulos nummularia*
GESNERIACEAE



121 *Pachycaulos nummularia*
GESNERIACEAE



122 *Heliconia burleana*
HELICONIACEAE



123 *Heliconia burleana*
HELICONIACEAE



124 *Heliconia impudica*
HELICONIACEAE



125 *Heliconia impudica*
HELICONIACEAE



126 *Hydrangea peruviana*
HYDRANGEACEAE



127 *Hydrangea peruviana*
HYDRANGEACEAE



128 *Calathea ischnosiphonoides*
MARANTACEAE



129 *Calathea ischnosiphonoides*
MARANTACEAE



130 *Marcgraviastrum gigantophyllum*
MARCGRAVIACEAE

Santa Lucía Reserve, Quito, Pichincha, ECUADOR

Plants of Santa Lucía Reserve visited by hummingbirds

Francisco Tobar^{1,4}, Holger Beck⁵, María José Gavilanes¹, Tatiana Santander G.¹, Álvaro J. Pérez³, Daniela Cevallos³, Nicolás Zapata³ & Catherine H. Graham²

¹BirdLife en Ecuador, ²Biodiversity and Conservation Biology Unit, Swiss Federal Research Institute, ³Herbario QCA, Pontificia Universidad Católica del Ecuador, ⁴Herbario Nacional del Ecuador, ⁵Santa Lucía Reserve

Photos: F. Tobar [pacotobar76@hotmail.com], Holger Beck, and Aves y Conservación. Produced by the authors with the assistance of Rayane Ribeiro, Field Museum. Acknowledgment: Swiss Federal Research Institute (WSL), National Geographic Society (Grant N° 9952-16), Swiss National Science Foundation (SNF Grant N° 173342), European Research Council Advanced Grants (ERC Grant N° 787638), Aves y Conservación/BirdLife in Ecuador, Rufford Foundation, and Santa Lucía Reserve. Legend: ♀ - female, ♂ - male.



© Field Museum (2022) CC BY-NC 4.0. Licensed works are free to use/share/remix with attribution, but commercial use of the original work is not permitted.

[fieldguides.fieldmuseum.org]

[1460] version 1 8/2022



131 *Marcgraviastrum gigantophyllum*
MARCGRAVIACEAE



132 *Marcgraviastrum gigantophyllum*
MARCGRAVIACEAE



133 *Sarcopera anomala*
MARCGRAVIACEAE



134 *Sarcopera anomala*
MARCGRAVIACEAE



135 *Sarcopera anomala*
MARCGRAVIACEAE



136 *Meriania finicola*
MELASTOMATACEAE



137 *Meriania finicola*
MELASTOMATACEAE



138 *Meriania tomentosa*
MELASTOMATACEAE



139 *Meriania tomentosa*
MELASTOMATACEAE



140 *Miconia hymenantha*
MELASTOMATACEAE



141 *Miconia hymenantha*
MELASTOMATACEAE



142 *Fuchsia macrostigma*
ONAGRACEAE



143 *Fuchsia macrostigma*
ONAGRACEAE



144 *Elleanthus aurantiacus*
ORCHIDACEAE



145 *Elleanthus aurantiacus*
ORCHIDACEAE



146 *Elleanthus aurantiacus*
ORCHIDACEAE



147 *Elleanthus aurantiacus*
ORCHIDACEAE



148 *Elleanthus confusus*
ORCHIDACEAE



149 *Elleanthus confusus*
ORCHIDACEAE



150 *Elleanthus discolor*
ORCHIDACEAE

Santa Lucía Reserve, Quito, Pichincha, ECUADOR

Plants of Santa Lucía Reserve visited by hummingbirds

Francisco Tobar^{1,4}, Holger Beck⁵, María José Gavilanes¹, Tatiana Santander G.¹, Álvaro J. Pérez³, Daniela Cevallos³, Nicolás Zapata³ & Catherine H. Graham²

¹BirdLife en Ecuador, ²Biodiversity and Conservation Biology Unit, Swiss Federal Research Institute, ³Herbario QCA, Pontificia Universidad Católica del Ecuador, ⁴Herbario Nacional del Ecuador, ⁵Santa Lucía Reserve

Photos: F. Tobar [pacotobar76@hotmail.com], Holger Beck, and Aves y Conservación. Produced by the authors with the assistance of Rayane Ribeiro, Field Museum. Acknowledgment: Swiss Federal Research Institute (WSL), National Geographic Society (Grant N° 9952-16), Swiss National Science Foundation (SNF Grant N° 173342), European Research Council Advanced Grants (ERC Grant N° 787638), Aves y Conservación/BirdLife in Ecuador, Rufford Foundation, and Santa Lucía Reserve. Legend: ♀ - female, ♂ - male.



© Field Museum (2022) CC BY-NC 4.0. Licensed works are free to

use/share/remix with attribution, but commercial use of the original work is not permitted.

[fieldguides.fieldmuseum.org]

[1460] version 1 8/2022



151 *Elleanthus discolor*
ORCHIDACEAE



152 *Elleanthus smithii*
ORCHIDACEAE



153 *Elleanthus smithii*
ORCHIDACEAE



154 *Arachnothryx chimboracensis*
RUBIACEAE



155 *Arachnothryx chimboracensis*
RUBIACEAE



156 *Arachnothryx perezii*
RUBIACEAE



157 *Arachnothryx perezii*
RUBIACEAE



158 *Hoffmannia verticillata*
RUBIACEAE



159 *Hoffmannia verticillata*
RUBIACEAE



160 *Manettia trianae*
RUBIACEAE



161 *Manettia trianae*
RUBIACEAE



162 *Palicourea demissa*
RUBIACEAE



163 *Palicourea demissa*
RUBIACEAE



164 *Palicourea lineata*
RUBIACEAE



165 *Palicourea lineata*
RUBIACEAE



166 *Palicourea sodiroi*
RUBIACEAE



167 *Palicourea sodiroi*
RUBIACEAE



168 *Brugmansia candida*
SOLANACEAE



169 *Cuatresia riparia*
SOLANACEAE



170 *Cuatresia riparia*
SOLANACEAE

Santa Lucía Reserve, Quito, Pichincha, ECUADOR

Plants of Santa Lucía Reserve visited by hummingbirds

Francisco Tobar^{1,4}, Holger Beck⁵, María José Gavilanes¹, Tatiana Santander G.¹, Álvaro J. Pérez³, Daniela Cevallos³, Nicolás Zapata³ & Catherine H. Graham²

¹BirdLife en Ecuador, ²Biodiversity and Conservation Biology Unit, Swiss Federal Research Institute, ³Herbario QCA, Pontificia Universidad Católica del Ecuador, ⁴Herbario Nacional del Ecuador, ⁵Santa Lucía Reserve

Photos: F. Tobar [pacotobar76@hotmail.com], Holger Beck, and Aves y Conservación. Produced by the authors with the assistance of Rayane Ribeiro, Field Museum. Acknowledgment: Swiss Federal Research Institute (WSL), National Geographic Society (Grant N° 9952-16), Swiss National Science Foundation (SNF Grant N° 173342), European Research Council Advanced Grants (ERC Grant N° 787638), Aves y Conservación/BirdLife in Ecuador, Rufford Foundation, and Santa Lucía Reserve.

Legend: ♀ - female, ♂ - male.



© Field Museum (2022) CC BY-NC 4.0. Licensed works are free to

use/share/remix with attribution, but commercial use of the original work is not permitted.

[fieldguides.fieldmuseum.org]

[1460] version 1 8/2022



171 *Markea pilosa*
SOLANACEAE



172 *Markea pilosa*
SOLANACEAE



173 *Markea spruceana*
SOLANACEAE



174 *Markea spruceana*
SOLANACEAE



175 *Tropaeolum adpressum*
TROPAEOLACEAE



176 *Tropaeolum adpressum*
TROPAEOLACEAE



177 *Renealmia fragilis*
ZINGIBERACEAE



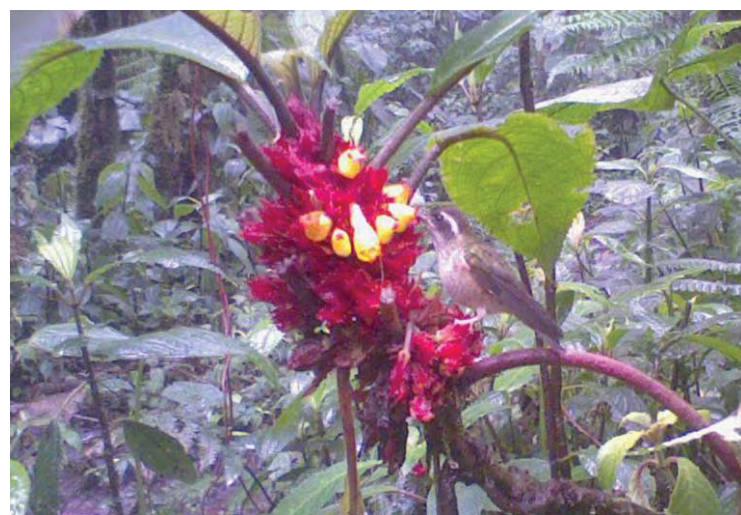
178 *Renealmia fragilis*
ZINGIBERACEAE



179 *Renealmia sessilifolia*
ZINGIBERACEAE



180 *Renealmia sessilifolia*
ZINGIBERACEAE



181 *Adelomyia melanogenys*
TROCHILIDAE
Speckled Hummingbird



182 *Aglaiocercus coelestis* (♀)
TROCHILIDAE
Violet-tailed Sylph

Santa Lucía Reserve, Quito, Pichincha, ECUADOR

Plants of Santa Lucía Reserve visited by hummingbirds

Francisco Tobar^{1,4}, Holger Beck⁵, María José Gavilanes¹, Tatiana Santander G.¹, Álvaro J. Pérez³, Daniela Cevallos³,
Nicolás Zapata³ & Catherine H. Graham²

¹BirdLife en Ecuador, ²Biodiversity and Conservation Biology Unit, Swiss Federal Research Institute, ³Herbario QCA, Pontificia Universidad Católica del Ecuador, ⁴Herbario Nacional del Ecuador, ⁵Santa Lucía Reserve

Photos: F. Tobar [pacotobar76@hotmail.com], Holger Beck, and Aves y Conservación. Produced by the authors with the assistance of Rayane Ribeiro, Field Museum. Acknowledgment: Swiss Federal Research Institute (WSL), National Geographic Society (Grant N° 9952-16), Swiss National Science Foundation (SNF Grant N° 173342), European Research Council Advanced Grants (ERC Grant N° 787638), Aves y Conservación/BirdLife in Ecuador, Rufford Foundation, and Santa Lucía Reserve. Legend: ♀ - female, ♂ - male.



© Field Museum (2022) CC BY-NC 4.0. Licensed works are free to

use/share/remix with attribution, but commercial use of the original work is not permitted.

[fieldguides.fieldmuseum.org]

[1460] version 1 8/2022



183 *Agelaiocercus coelestis* (♀)
TROCHILIDAE
Violet-tailed Sylph



184 *Agelaiocercus coelestis* (♀)
TROCHILIDAE
Violet-tailed Sylph



185 *Amazilia tzacatl*
TROCHILIDAE
Rufous-tailed Hummingbird



186 *Boissonneaua flavescens*
TROCHILIDAE
Buff-tailed Coronet



187 *Coeligena torquata* (♀)
TROCHILIDAE
Collared Inca



188 *Coeligena torquata* (♂)
TROCHILIDAE
Collared Inca

Santa Lucía Reserve, Quito, Pichincha, ECUADOR

Plants of Santa Lucía Reserve visited by hummingbirds

Francisco Tobar^{1,4}, Holger Beck⁵, María José Gavilanes¹, Tatiana Santander G.¹, Álvaro J. Pérez³, Daniela Cevallos³, Nicolás Zapata³ & Catherine H. Graham²

¹BirdLife en Ecuador, ²Biodiversity and Conservation Biology Unit, Swiss Federal Research Institute, ³Herbario QCA, Pontificia Universidad Católica del Ecuador, ⁴Herbario Nacional del Ecuador, ⁵Santa Lucía Reserve

Photos: F. Tobar [pacotobar76@hotmail.com], Holger Beck, and Aves y Conservación. Produced by the authors with the assistance of Rayane Ribeiro, Field Museum. Acknowledgment: Swiss Federal Research Institute (WSL), National Geographic Society (Grant N° 9952-16), Swiss National Science Foundation (SNF Grant N° 173342), European Research Council Advanced Grants (ERC Grant N° 787638), Aves y Conservación/BirdLife in Ecuador, Rufford Foundation, and Santa Lucía Reserve. Legend: ♀ - female, ♂ - male.

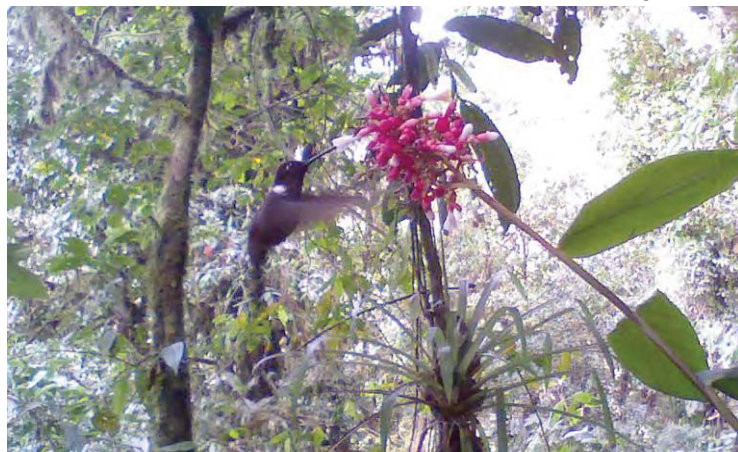


© Field Museum (2022) CC BY-NC 4.0. Licensed works are free to

use/share/remix with attribution, but commercial use of the original work is not permitted.

[fieldguides.fieldmuseum.org]

[1460] version 1 8/2022



189

Coeligena wilsoni
TROCHILIDAE
Brown Inca



190

Coeligena wilsoni
TROCHILIDAE
Brown Inca



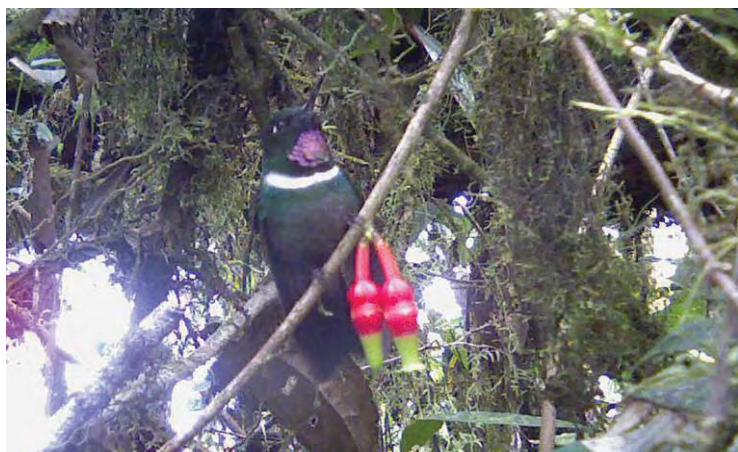
191

Colibri cyanotus
TROCHILIDAE
Lesser Violetear



192

Doryfera ludovicæ
TROCHILIDAE
Green-fronted Lancebill



193

Heliangelus strophianus (♂)
TROCHILIDAE
Gorgeted Sunangel



194

Heliangelus strophianus
TROCHILIDAE
Gorgeted Sunangel

Santa Lucía Reserve, Quito, Pichincha, ECUADOR

Plants of Santa Lucía Reserve visited by hummingbirds

13

Francisco Tobar^{1,4}, Holger Beck⁵, María José Gavilanes¹, Tatiana Santander G.¹, Álvaro J. Pérez³, Daniela Cevallos³, Nicolás Zapata³ & Catherine H. Graham²

¹BirdLife en Ecuador, ²Biodiversity and Conservation Biology Unit, Swiss Federal Research Institute, ³Herbario QCA, Pontificia Universidad Católica del Ecuador, ⁴Herbario Nacional del Ecuador, ⁵Santa Lucía Reserve

Photos: F. Tobar [pacotobar76@hotmail.com], Holger Beck, and Aves y Conservación. Produced by the authors with the assistance of Rayane Ribeiro, Field Museum. Acknowledgment: Swiss Federal Research Institute (WSL), National Geographic Society (Grant N° 9952-16), Swiss National Science Foundation (SNF Grant N° 173342), European Research Council Advanced Grants (ERC Grant N° 787638), Aves y Conservación/BirdLife in Ecuador, Rufford Foundation, and Santa Lucía Reserve. Legend: ♀ - female, ♂ - male.



© Field Museum (2022) CC BY-NC 4.0. Licensed works are free to

use/share/remix with attribution, but commercial use of the original work is not permitted.

[fieldguides.fieldmuseum.org]

[1460] version 1 7/2022



195 *Heliodoxa imperatrix* (♀)
TROCHILIDAE
Empress Brilliant



196 *Heliodoxa rubinoides* (♀)
TROCHILIDAE
Fawn-breasted Brilliant



197 *Ocreatus underwoodii* (♀)
TROCHILIDAE
Booted Racket-tail



198 *Schistes albogularis*
TROCHILIDAE
Chocó Daggerbill



199 *Urosticte benjamini* (♂)
TROCHILIDAE
Purple-bibbed Whitetip



200 *Phaethornis syrmatophorus*
TROCHILIDAE
Tawny-bellied Hermit