

# Zona de amortiguamiento, Cusco, Perú

## Orquídeas de la Reserva de Biosfera del Manu

1

Efrain Suelli Montañez<sup>1</sup>, Carmen Soto Vargas<sup>2</sup> & Francisco Llacma Pfocco<sup>3</sup>

<sup>1</sup>Ministerio de Cultura del Cusco, <sup>2</sup>INKATERRA & <sup>3</sup>ACCA

Fotos: Francisco Llacma Pfocco

Producido por: Efrain Suelli Montañez & Carmen Soto Vargas. Con el apoyo de Tyana Wachter  
© Efrain Suelli Montañez [efrain\_sms@hotmail.com].

[fieldguides.fieldmuseum.org]

[1075] versión 1 10/2018



1 *Ada* aff. *brachypus*  
(Rchb.f.) Pupulin



2 *Altensteinia* *fimbriata*  
Kunth



3 *Altensteinia* *fimbriata*  
Kunth



4 *Andinia* *sunchubambensis*  
A. Doucette & Janovec



5 *Barbosella* *cucullata*  
Lindl. Schltr.



6 *Cranichis* sp. 1



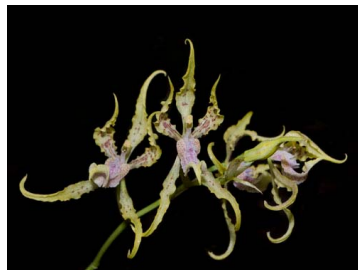
7 *Cyrtidiorchis* *stumpfleii*  
(Garay) Rauschert



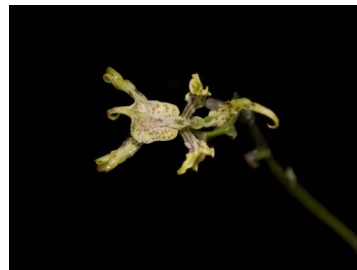
8 *Cyrtochilum* *cimiciferum*  
(Rchb.f.) Dalström



9 *Cyrtochilum* *loesenerianum*  
(Schltr.) Dalström



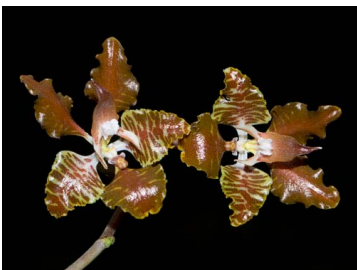
10 *Cyrtochilum* aff. *loesenerianum*  
(Schltr.) Dalström



11 *Cyrtochilum* aff. *loesenerianum*  
(Schltr.) Dalström



12 *Cyrtochilum* *methonica*  
(Rchb.f.) Kraenzl.



13 *Cyrtochilum* *minax*  
(Rchb.f.) Kraenzl.



14 *Cyrtochilum* *minax*  
(Rchb.f.) Kraenzl.



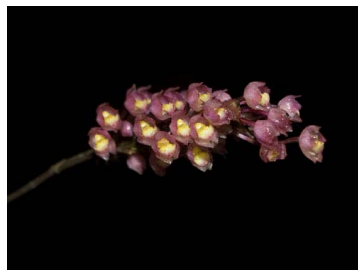
15 *Cyrtochilum* *mystacinum*  
Lindl.



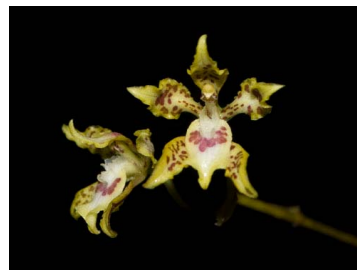
16 *Cyrtochilum* *mystacinum*  
Lindl.



17 *Cyrtochilum* *mystacinum*  
Lindl.



18 *Cyrtochilum* *rhodoneurum*  
(Rchb.f.) Dalström



19 *Cyrtochilum* *tetraplasium*  
(Rchb.f.) Dalström



20 *Cyrtochilum* sp. 1

# Zona de amortiguamiento, Cusco, Perú

## Orquídeas de la Reserva de Biosfera del Manu

Efrain Suelli Montañez<sup>1</sup>, Carmen Soto Vargas<sup>2</sup> & Francisco Llacma Pfocco<sup>3</sup>

<sup>1</sup>Ministerio de Cultura del Cusco, <sup>2</sup>INKATERRA & <sup>3</sup>ACCA

Fotos: Francisco Llacma Pfocco

Producido por: Efrain Suelli Montañez & Carmen Soto Vargas. Con el apoyo de Tyana Wachter  
© Efrain Suelli Montañez [efrain\_sms@hotmail.com].

[fieldguides.fieldmuseum.org]

[1075] versión 1 10/2018



21 *Cyrtorchilum* sp. 2



22 *Elleanthus aurantiacus*  
(Lindl.) Rchb.f.



23 *Elleanthus* sp. 1



24 *Elleanthus* sp. 2



25 *Elleanthus* sp. 3



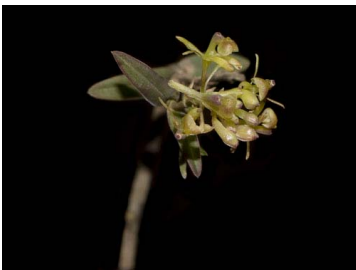
26 *Elleanthus* sp. 3



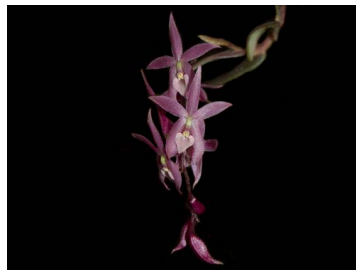
27 *Epidendrum* aff. *macrostachyum*  
Lindl.



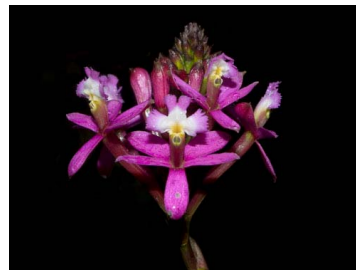
28 *Epidendrum physophorum*  
Schltr.



29 *Epidendrum physophorum*  
Schltr.



30 *Epidendrum quispei*  
Hágsater & B. Collantes



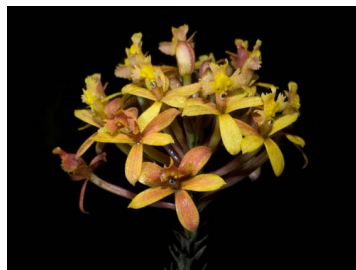
31 *Epidendrum secundum*  
Jacq.



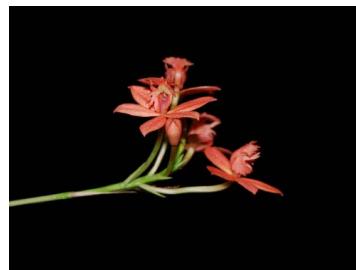
32 *Epidendrum secundum*  
Jacq.



33 *Epidendrum* aff. *secundum*  
Jacq.



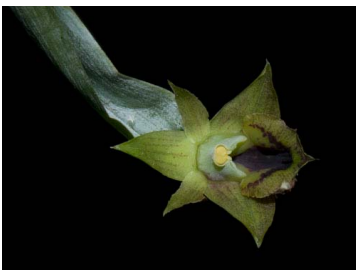
34 *Epidendrum* aff. *secundum*  
Jacq.



35 *Epidendrum* aff. *secundum*  
Jacq.



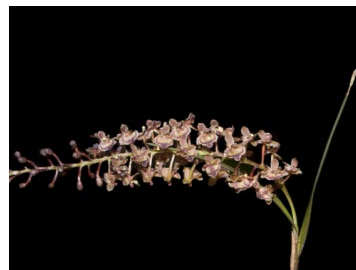
36 *Epidendrum* aff. *secundum*  
Jacq.



37 *Epidendrum sophronitis*  
Lindl. & Rchb.f.



38 *Epidendrum subliberum*  
C. Schweinf.



39 *Epidendrum subliberum*  
C. Schweinf.



40 *Epidendrum syringothyrsus*  
Rchb.f. ex Hook.f.

# Zona de amortiguamiento, Cusco, Perú

## Orquídeas de la Reserva de Biosfera del Manu

3

Efrain Suelli Montañez<sup>1</sup>, Carmen Soto Vargas<sup>2</sup> & Francisco Llacma Pfocco<sup>3</sup>

<sup>1</sup>Ministerio de Cultura del Cusco, <sup>2</sup>INKATERRA & <sup>3</sup>ACCA

Fotos: Francisco Llacma Pfocco

Producido por: Efrain Suelli Montañez & Carmen Soto Vargas. Con el apoyo de Tyana Wachter

© Efrain Suelli Montañez [efrain\_sms@hotmail.com].

[fieldguides.fieldmuseum.org]

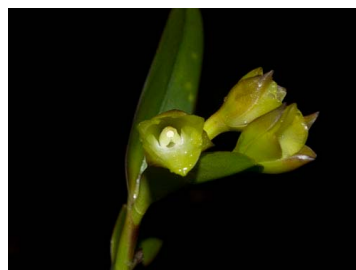
[1075] versión 1 10/2018



41 *Epidendrum* sp. 1



42 *Epidendrum* sp. 1



43 *Epidendrum* sp. 2



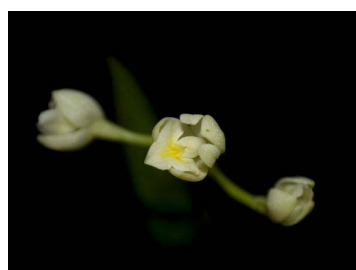
44 *Epidendrum* sp. 3



45 *Epidendrum* sp. 4



46 *Epidendrum* sp. 4



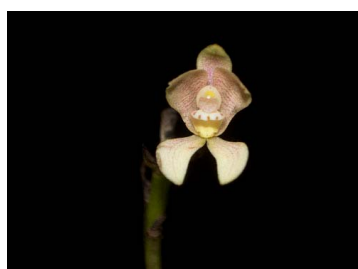
47 *Epidendrum* sp. 5



48 *Gomesa ramosa*  
(Lindl.) M.W. Chase & N.H. Williams



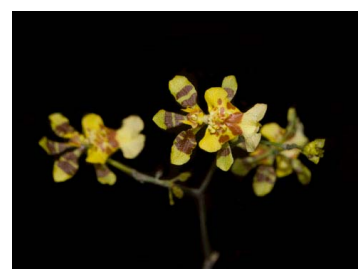
49 *Govenia tingens*  
Poepp. & Endl.



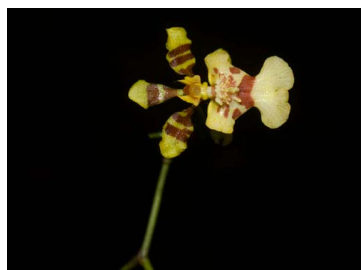
50 *Govenia tingens*  
Poepp. & Endl.



51 *Habenaria corydophora*  
Rchb.f.



52 *Heteranthodium* aff. *retusum*  
(Lindl.) Szlach. & Kolan.



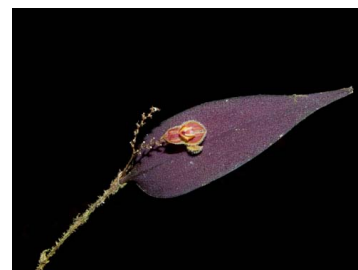
53 *Heteranthodium* aff. *retusum*  
(Lindl.) Szlach. & Kolan.



54 *Hofmeistera eumicroscopica*  
Rchb.f.



55 *Lepanthes caudatisepala*  
C. Schweinf.



56 *Lepanthes doloma*  
Luer. & R. Vásquez



57 *Lepanthes longipedicellata*  
C. Schweinf.



58 *Lepanthes* aff. *papilio*  
Luer. & R. Vásquez



59 *Lepanthes tachirensis*  
Foldats



60 *Liparis elegans*  
Lindl.

# Zona de amortiguamiento, Cusco, Perú

## Orquídeas de la Reserva de Biosfera del Manu

Efrain Suelli Montañez<sup>1</sup>, Carmen Soto Vargas<sup>2</sup> & Francisco Llacma Pfocco<sup>3</sup>

<sup>1</sup>Ministerio de Cultura del Cusco, <sup>2</sup>INKATERRA & <sup>3</sup>ACCA

Fotos: Francisco Llacma Pfocco

Producido por: Efrain Suelli Montañez & Carmen Soto Vargas. Con el apoyo de Tyana Wachter  
© Efrain Suelli Montañez [efrain\_sms@hotmail.com].

[fieldguides.fieldmuseum.org]

[1075] versión 1 10/2018



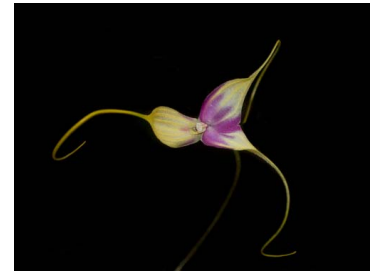
61 *Liparis* sp. 1



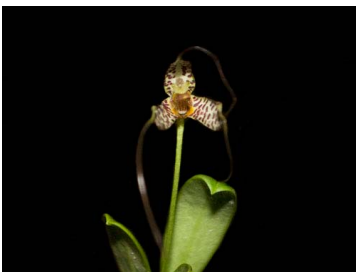
62 *Liparis* sp. 1



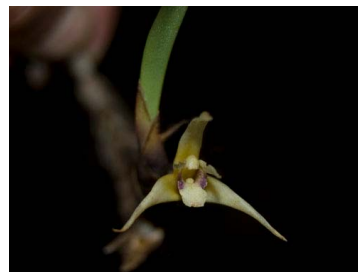
63 *Malaxis* aff. *andicola*  
(Ridl) Kuntze



64 *Masdevallia antonii*  
Königer



65 *Masdevallia* sp. 1



66 *Maxillaria* aff. *brachypoda*  
Schltr.



67 *Maxillaria calantha*  
Schltr.



68 *Maxillaria calantha*  
Schltr.



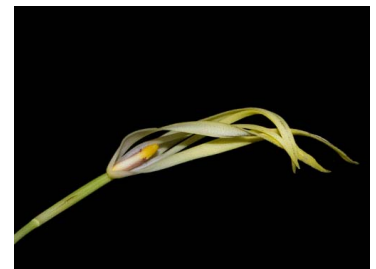
69 *Maxillaria calantha*  
Schltr.



70 *Maxillaria* aff. *cuzcoensis*  
C. Schweinf.



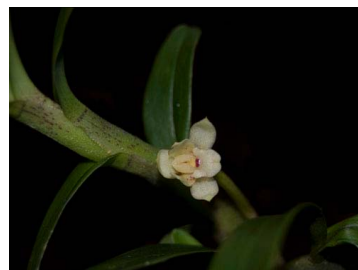
71 *Maxillaria floribunda*  
Lindl.



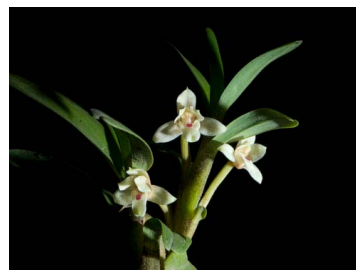
72 *Maxillaria* aff. *floribunda*  
Lindl.



73 *Maxillaria gigantea*  
(Lindl.) Dodson



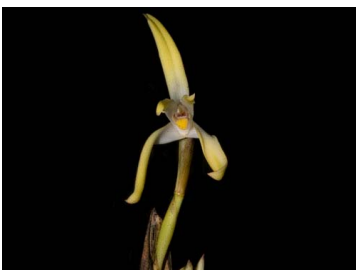
74 *Maxillaria graminifolia*  
(Kunth) Rchb.f.



75 *Maxillaria graminifolia*  
(Kunth) Rchb.f.



76 *Maxillaria haemathodes*  
(Ruiz & Pav.) Garay



77 *Maxillaria* aff. *luteoalba*  
Lindl.



78 *Maxillaria* aff. *luteoalba*  
Lindl.



79 *Maxillaria platypetala*  
Ruiz & Pav.



80 *Maxillaria* aff. *trigona*  
C. Schweinf.

# Zona de amortiguamiento, Cusco, Perú

## Orquídeas de la Reserva de Biosfera del Manu

Efrain Suelli Montañez<sup>1</sup>, Carmen Soto Vargas<sup>2</sup> & Francisco Llacma Pfocco<sup>3</sup>

<sup>1</sup>Ministerio de Cultura del Cusco, <sup>2</sup>INKATERRA & <sup>3</sup>ACCA

Fotos: Francisco Llacma Pfocco

Producido por: Efrain Suelli Montañez & Carmen Soto Vargas. Con el apoyo de Tyana Wachter  
© Efrain Suelli Montañez [efrain\_sms@hotmail.com].

[fieldguides.fieldmuseum.org]

[1075] versión 1 10/2018



81 *Maxillaria* aff. *trigona*  
C. Schweinf.



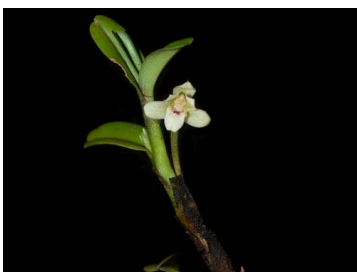
82 *Maxillaria* sp. 1



83 *Maxillaria* sp. 1



84 *Maxillaria* sp. 2



85 *Maxillaria* sp. 3



86 *Maxillaria* sp. 4



87 *Maxillaria* sp. 5



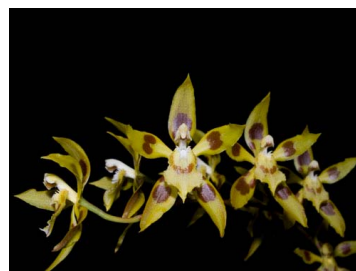
88 *Maxillaria* sp. 6



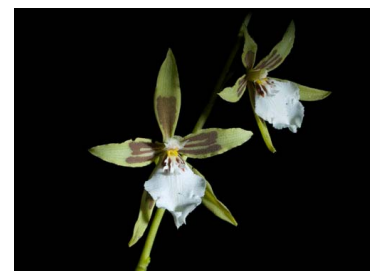
89 *Myoxanthus* sp. 1



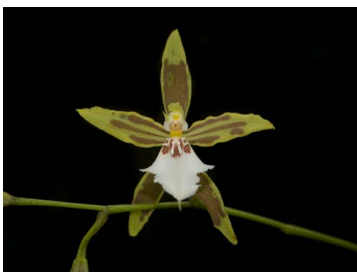
90 *Odontoglossum auroincarum*  
Dalström & Ruíz Pérez



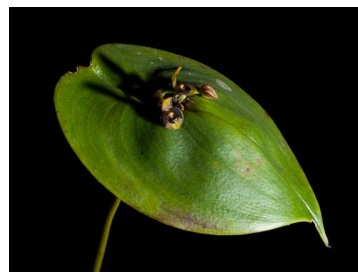
91 *Odontoglossum auroincarum*  
Dalström & Ruíz Pérez



92 *Odontoglossum multistellare*  
Rchb.f.



93 *Odontoglossum multistellare*  
Rchb.f.



94 *Pleurothallis cordata*  
(Ruiz & Pav.) Lindl.



95 *Pleurothallis* subg. *crocodeilanthe*  
(Rchb.f. & Warsz.) Luer



96 *Pleurothallis* sp. 1



97 *Pleurothallis* sp. 2



98 *Pleurothallis* sp. 3



99 *Pleurothallis* sp. 4



100 *Ponthieva garayana*  
Dodson & R. Vásquez

# Zona de amortiguamiento, Cusco, Perú

## Orquídeas de la Reserva de Biosfera del Manu

Efrain Suelli Montañez<sup>1</sup>, Carmen Soto Vargas<sup>2</sup> & Francisco Llacma Pfocco<sup>3</sup>

<sup>1</sup>Ministerio de Cultura del Cusco, <sup>2</sup>INKATERRA & <sup>3</sup>ACCA

Fotos: Francisco Llacma Pfocco

Producido por: Efrain Suelli Montañez & Carmen Soto Vargas. Con el apoyo de Tyana Wachter  
© Efrain Suelli Montañez [efrain\_sms@hotmail.com].

[fieldguides.fieldmuseum.org]

[1075] versión 1 10/2018



101 *Prosthechea farfanii*  
Christenson



102 *Prosthechea fusca*  
(Schltr.) D.E. Benn & Christenson



103 *Rodriguezia carnea*  
Lindl.



104 *Rodriguezia carnea*  
Lindl.



105 *Scaphyglottis bifida*  
(Rchb.f) C. Schweinf.



106 *Sobralia setigera*  
Poepp. & Endl.



107 *Sobralia* sp. 1



108 *Sobralia* sp. 2



109 *Solenidiopsis galianoi*  
Dalström & P. Núñez



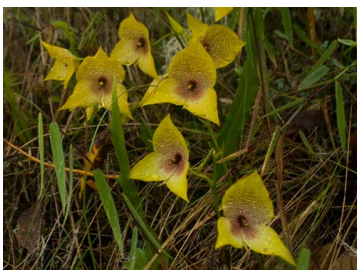
110 *Stelis* sp. 1



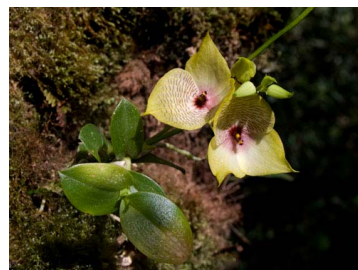
111 *Stenia angustilabia*  
D.E. Benn & Christenson



112 *Sudamerlycaste heynderycxii*  
(E. Morren) Archila



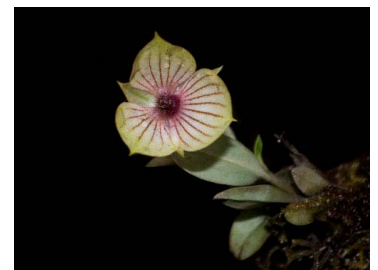
113 *Telipogon bowmanii*  
Rchb.f.



114 *Telipogon bowmanii*  
Rchb.f.



115 *Telipogon bowmanii*  
Rchb.f.



116 *Telipogon bowmanii*  
Rchb.f.



117 *Telipogon javiercastroviejoi*  
Nauray & A. Galán



118 *Telipogon* aff. *javiercastroviejoi*  
Nauray & A. Galán



119 *Telipogon* aff. *mesotropicalis*  
Nauray & A. Galán



120 *Telipogon* aff. *mesotropicalis*  
Nauray & A. Galán

# Zona de amortiguamiento, Cusco, Perú

## Orquídeas de la Reserva de Biosfera del Manu

7

Efrain Suelli Montañez<sup>1</sup>, Carmen Soto Vargas<sup>2</sup> & Francisco Llacma Pfocco<sup>3</sup>

<sup>1</sup>Ministerio de Cultura del Cusco, <sup>2</sup>INKATERRA & <sup>3</sup>ACCA

Fotos: Francisco Llacma Pfocco

Producido por: Efrain Suelli Montañez & Carmen Soto Vargas. Con el apoyo de Tyana Wachter

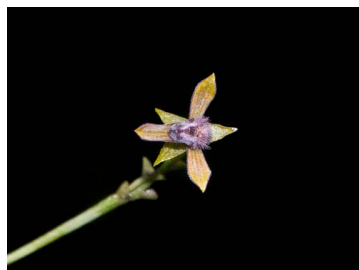
© Efrain Suelli Montañez [efrain\_sms@hotmail.com].

[fieldguides.fieldmuseum.org]

[1075] versión 1 10/2018



121 *Telipogon* aff. *mesotropicalis*  
Nauray & A. Galán



122 *Telipogon* *pogonostalix*  
Rchb.f



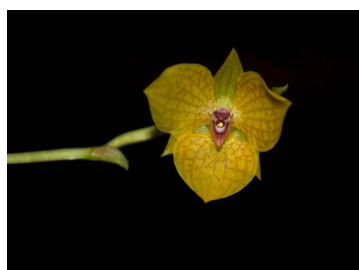
123 *Telipogon* *salinasiae*  
Farfán & Moretz



124 *Telipogon* *salinasiae*  
Farfán & Moretz



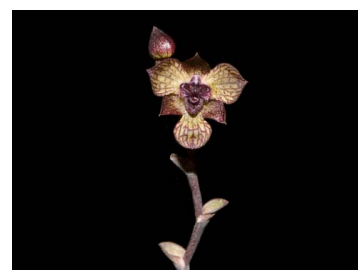
125 *Telipogon* *tayacajaensis*  
D.E. Benn & Christenson



126 *Telipogon* *tayacajaensis*  
D.E. Benn & Christenson



127 *Telipogon* *tupayachii*  
Nauray & A. Galán



128 *Telipogon* *tupayachii*  
Nauray & A. Galán



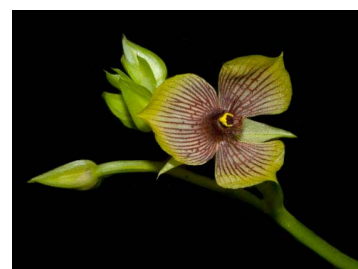
129 *Telipogon* sp. 1



130 *Telipogon* sp. 1



131 *Telipogon* sp. 2



132 *Telipogon* sp. 3



133 *Telipogon* sp. 3



134 *Telipogon* sp. 4



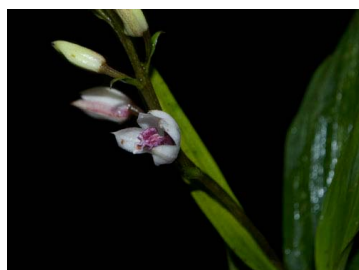
135 *Telipogon* sp. 5



136 *Trichoceros* *antennifer*  
(Bonpl.) Kunth



137 *Trichoceros* *antennifer*  
(Bonpl.) Kunth



138 *Vargasiella* aff. *peruviana*  
C. Schweinf.



139 *Xylobium* sp. 1



140 INDET