

## Vegetation Associations Surveyed in 2007

Survey Site	Surveyed Vegetation Association	Mapped Vegetation Association
1	Sw/Fm	Sw/Fm
2	W/B	W/B
3	Sw/W	Sw/W
4	Sw/W	Sw/W
5	B/L/Fa	~
6	W/Sw	W/Sw
7	B/L/Fa	~
8	Sw/W	Sw/W
9	W/S	W/S
10	B/L/Fa	B/L/Fa
11	B/L/Fa	B/L/Fa
12	W/S	Sw/W
13	B/L/Fa	~
14	B/Fa	~
15	S/W	W/S
16	W/S	W/S
17	W/S	W/S
18	SW/W	B/L/Fa
19	B/Fa	B/L/Fa
20	B/L/Fa	B/L/Fa
21	W/S	~
22	Sw/W	~
23	B/Fa	~
24	B/Fa	B/W
25	B/Fa	~
26	S/W	S/W
27	S/W	Sw/W
28	Mx	~
29	B/W	B/W
30	B/Fa	~
31	B/L/Fa	B/Fa
32	S/W	S/W
33	B/Fa	~
34	W/SW	~
35	W/S	~
36	Sw/Fm	Sw/Fm
37	W/SW	W/SW
38	Sw/Fm	Sw/Fm
39	S/W	S/W
40	B/W	B/W
41	Mx	Mx
42	Mx	Mx
43	W/S	W/S
44	Mx	Mx
45	Sw/W	Sw/W
46	PI	PI
47	Dd	Dd
48	W/Sw	Footprint

Survey Site	Surveyed Vegetation Association	Mapped Vegetation Association
49	W/S	W/S
50	S/W	W/S
51	B/Fa	B/Fa
52	B/L/Fa	Mx
53	B/W	B/W
54	B/L/Fa	B/L/Fa
55	Sw/W	Sw/W
56	B/L/Fa	~
57	Sw/W	~
58	Sw/W	~
59	Dd	Dd
60	W/S	W/S
61	B/Fa	B/L/Fa
62	B/L/Fa	B/L/Fa
63	Sw/W	Sw/W
64	Sw/W	Sw/W
65	W/S	~
66	Sw/W	Sw/W
67	Mx	Mx
68	Pl	Pl
69	Dd	Dd
70	Sw/Fm	Sw/W
71	Sw/W	Sw/W
72	Sw/W	Sw/W
73	Sw/W	Sw/W
74	Sw/W	Sw/W
75	W/S	W/S
76	W/S	Footprint

Note:

1. '~' indicates that the survey site was outside of the LSA and therefore was not mapped.
2. There may be discrepancies between the site call for the vegetation association and the polygon label on the map. Often, many associations were too small to map so were labeled the same as the surrounding homogeneous vegetation association.

## Vegetation Association Descriptions for the Local Study Area

### Sedge/Willow (S/W)

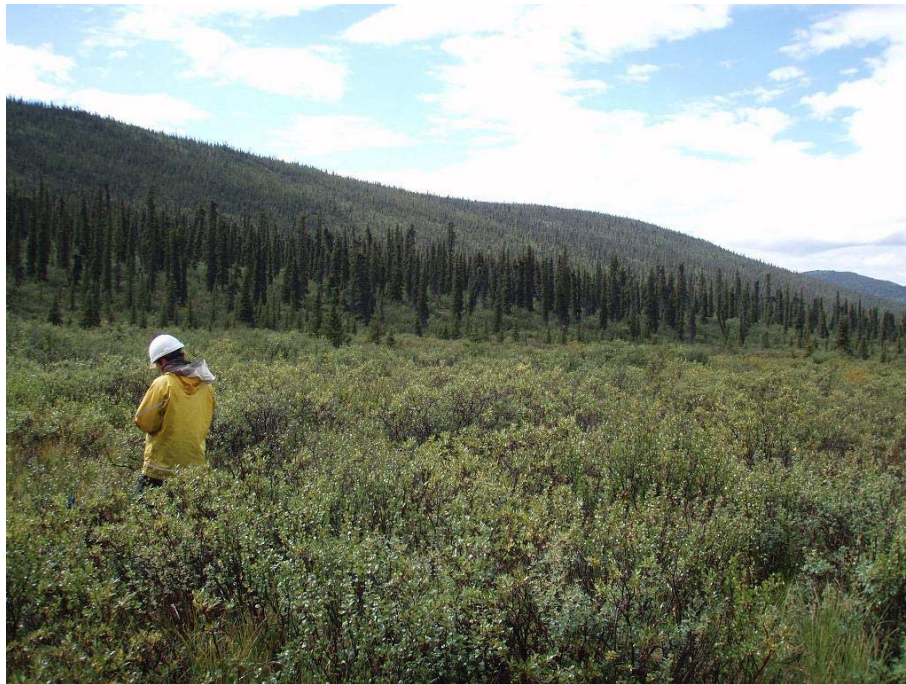
This wetland association is common in both the boreal and subalpine zone and occurs in (moist/wet) depression or drainage areas where water collects either above or below the ground, due to bedrock or soil conditions. Wetlands are defined as being “waterlogged soils where in some cases the production of plant materials exceeds the rate of decomposition” (National Wetlands Working Group, 1988). Soils are saturated for enough time that excess water and low soil oxygen levels are the main determinants of soil and vegetation development (MacKenzie and Moran 2004). Wetlands, including streams and fens, are common in low gradient valleys and catchment basins in the Faro LSA (Oswald et. al, 1983). A mixture of sedge and graminoid species dominates the area, with water sedge (*Carex aquatilis*) being most common. Shrubs such as willows (*Salix spp.*), dwarf birch (*Betula glandulosa*) and some white spruce (*Picea glauca*) are also present around the edges of the wetland. Wetland mosses such as sphagnum (*Sphagnum spp.*) are also abundant.



**Photo 1. Sedge/Willow association**

### **Willow/Sedge (W/S)**

The willow/sedge association is linked with standing or flowing water, usually along lakes, ponds and creek drainages. It is a common riparian vegetation association found over a wide elevation range throughout the study area. Various willow species including tea-leaved willow (*Salix planifolia*) and Athabasca willow (*Salix athabascensis*) are dominant in the shrub layer though dwarf birch and shrubby cinquefoil (*Potentilla fruticosa*) may also be present. Shrub heights vary depending on water availability and exposure to wind and snow, but are generally 0.5 to 1 m tall. Sedge species (*Carex spp.*) such as water sedge are common below the shrub layer along with various wetland mosses (*Sphagnum spp.*).



**Photo 2. Willow/Sedge association**

### **Willow/White Spruce (W/Sw)**

The willow/white spruce vegetation association is often found in a riparian drainage or draw, along creeks or rivers primarily in the boreal zone. An open canopy of mature white spruce is scattered among a well-developed shrub layer dominated by various willow species and dwarf birch. Ground cover is often a combination of ericaceous shrubs, sedge species, lichens and mosses. Such species include arctic bearberry (*Arctostaphylos rubra*), net-veined willow (*Salix reticulata*), common horsetail (*Equisetum arvense*) and bluegrasses (*Poa spp.*).



**Photo 3. Willow/White Spruce association**

### **Willow/Dwarf Birch (W/B)**

This riparian vegetation association is widespread in lower elevations, occurring on gentle to steep slopes near drainages or open water in the boreal zone. Willow species and dwarf birch are codominant in a well-developed shrub layer wherein willows can reach up to 4 m. Scattered young white spruce trees are common, along with low shrubs such as Labrador tea (*Ledum groenlandicum*), as well as sparse grasses and forbs. Moss and lichen cover varies depending on water and nutrient availability.



**Photo 4. Willow/Dwarf Birch association**

### **Dwarf Birch/Willow (B/W)**

The birch/willow vegetation association is characteristic of slopes at higher elevations in the subalpine zone throughout the study area. Dwarf birch is the dominant shrub, however willow species, Labrador tea, shrubby cinquefoil and bog bilberry (*Vaccinium uliginosum*) are also present. A variety of ground shrubs such as crowberry (*Empetrum nigrum*), mountain cranberry (*Vaccinium vitis-idaea*) and alpine bearberry are found in the understory, however lichens (*Flavocetraria spp.*, *Cladina spp.* and *Stereocaulom spp.*) tend to dominate the groundcover. Krummholtz subalpine fir (*Abies lasiocarpa*) and white spruce occur occasionally.



**Photo 5. Dwarf Birch/Willow association**

### **Dwarf Birch/Lichen/Subalpine Fir (B/L/Fa)**

This vegetation association is a subalpine/alpine community characterized by rocky outcrops and windswept ridges at higher elevations. Dwarf birch is the dominant cover species at a height of 0.5 m tall, followed by a high cover of lichen species (*Cladina spp.*, *Stereocaulon spp.*, *Flavocetraria spp.*) intermixed with rocky outcrops. Krumholtz subalpine fir is the dominant tree species scattered throughout the vegetation association, although white spruce may also be present. Arctic bearberry, crowberry, bog bilberry and mountain avens (*Dryas spp.*) are also present.



**Photo 6. Dwarf Birch/Lichen/Subalpine Fir association**



### **Dwarf Birch/Subalpine Fir (B/Fa)**

The birch/fir vegetation association is a subalpine community occurring on well-drained soils and slopes at higher elevations. Dwarf birch is the dominant cover species at a height of 0.5 to 1 m tall with scattered subalpine fir as the dominant tree species at 2 – 6 m tall. Willow species, Labrador tea, mountain juniper (*Juniper communis*) and white spruce may also be present. Low growing shrubs include bog bilberry, arctic bearberry, crowberry and mountain cranberry. Graminoid species are present in the ground cover along with various lichen species (*Cladina spp.*, *Stereocolun spp.*, *Peltigera spp.*).



**Photo 7. Dwarf Birch/Subalpine Fir association**

### **White Spruce/Willow (Sw/W)**

The white spruce/willow association is the most frequent vegetation association within the study area, occurring in both the boreal and the subalpine zones on various upland and lowland slopes. White spruce dominates the tree canopy, though subalpine fir may also be present. A well-developed shrub layer is dominated by a high cover of 1 m tall willow species, along with a lower percent of dwarf birch, Labrador tea and shrubby cinquefoil. Dwarf shrubs in the ground cover layer include bog bilberry, common bearberry (*Arctostaphylos uva-ursi*), net-veined willow and crowberry. Common horsetail and bluegrass species are also frequent. Stair step moss (*Hylocomium splendens*), reindeer lichens (*Cladina rangifera*) and pelt lichens (*Peltigera spp.*) are common throughout the vegetation association.



**Photo 8. White Spruce/Willow association**

### **White Spruce/Feather moss (Sw/Fm)**

This vegetation association occurs most frequently on well-drained alluvial flats as well as on mesic sites in lowland areas throughout the boreal zone. The tree canopy is comprised of dense white spruce trees with a sparse shrub understory. Tall shrubs consist of willow species, dwarf birch and shrubby cinquefoil whereas low growing shrubs consist of mountain cranberry, bog bilberry, alpine bearberry and crowberry. Vegetation in the herbaceous layer includes arctic lupine (*Lupinus arcticus*), alpine sweet vetch (*Hedysarum alpinum*), purple-leaved willow-herb (*Epilobium ciliatum*) and bluegrass species. A thick carpet of feathermosses such as stair step moss is also present.



**Photo 9. White Spruce/Feather moss association**

## **Pine (PI)**

The Pine vegetation association is as its name suggests, a dominant tree canopy of lodgepole pine (*Pinus contorta*). It is found mostly on upland areas around the Grum and Vangorda pit at the SE end of the LSA in the boreal zone. The average tree canopy height is 16 m, with a few white spruce trees scattered throughout the subcanopy. A tall shrub layer of Sitka alder (*Alnus crispa* ssp. *Sinuate*) and Scouler's willow (*Salix scouleriana*) is common and followed by a lower shrub layer of Labrador tea, prickly rose (*Rosa acicularis*) and buffaloberry (*Shepherdia canadensis*). Ground cover consisting of bog bilberry, crowberry, bunchberry (*Cornus canadensis*), common bearberry and twinflower (*Linnaea borealis*) are noted at lower cover values. Feathermosses are also a common ground cover. This vegetation association is a typical mid-successional forest following fire.



**Photo 10. Pine association**

### **Mixed Coniferous-Deciduous (Mx)**

This vegetation association establishes on well drained sites over a broad elevation range. It consists of a mixture of coniferous and deciduous trees including white spruce, trembling aspen, balsam poplar (*Populus balsamifera*), lodgepole pine. Depending on moisture and nutrients, subalpine fir and/or black spruce (*Picea mariana*) may also be present. This is often a young forest or “mid-seral community following fire” (Staniforth, 1998) whereby trees are in both the tree canopy and shrub layer. Additional shrubs include dwarf birch, willow species and Labrador tea. Bog bilberry, crowberry and mountain cranberry comprise the layer of low growing shrubs whereby stair step moss, green reindeer lichen and pelt lichens moderately cover the remainder of the ground.



**Photo 11. Mixed Coniferous-Deciduous association**

## Deciduous (Dd)

The deciduous vegetation association often establishes on sites regenerating from a disturbance, whether it be fire or human development. Sites tend to be located on well-drained slopes and are rich in diversity. Most often located in the boreal zone, trembling aspen is the dominant tree species ranging in height from 2 to 8 m tall, followed by balsam poplar on moister sites. Tall shrubs include willow species, Sitka alder, shrubby cinquefoil, Labrador tea, dwarf birch, buffaloberry and prickly rose. White spruce may also be visible in the understory. Low growing shrubs include arctic bearberry, common bearberry, mountain cranberry and blueberry willow (*Salix myrtilifolia*). The herbaceous layer consists of bunchberry, bastard toad-flax (*Geocaulon lividum*), fireweed (*Epilobium angustifolium*), northern grass-of-parnassus (*Parnassia palustris*) and twin flower.



**Photo 12. Deciduous association**

### **Graminoid (Gr)**

The graminoid vegetation association is found in lowland areas on and around the project footprint in the boreal zone. It generally comprises an area re-established from seed mixtures of grasses and low growing forbs such as the freshwater reservoir located SE of the tailings pond along the access road. Grasses such as brome (*Bromus spp.*), reedgrass species (*Calamagrostis spp.*) and fescue species (*Festuca spp.*) dominate this vegetation association. Sedge species can occur as well as various forbs such as fireweed and wormwood (*Artemisia spp.*).



**Photo 13. Graminoid association**

## Vascular Plant Species in the Yukon Territory ranked by the General Status of Species in Canada (Wild Species, 2005).

Scientific Name	Common Name	Yukon Territory Rank
<i>Achnatherum nelsonii</i>	Columbia Needle Grass	Sensitive
<i>Achnatherum richardsonii</i>	Richardson's Needle Grass	Sensitive
<i>Actaea rubra</i>	Red Baneberry	Sensitive
<i>Agrostis exarata</i>	Spiked Bent Grass	Sensitive
<i>Agrostis humilis</i>	Alpine Bent Grass	May be at Risk
<i>Agrostis mertensii</i>	Northern Bent Grass	Sensitive
<i>Alisma triviale</i>	Northern Water Plantain	May be at Risk
<i>Alopecurus borealis</i>	Alpine Foxtail	Sensitive
<i>Alyssum obovatum</i>	American Madwort	Sensitive
<i>Anaphalis margaritacea</i>	Pearly Everlasting	May be at Risk
<i>Anemone multiceps</i>	Purple Anemone	May be at Risk
<i>Angelica lucida</i>	Seaside Angelica	May be at Risk
<i>Antennaria densifolia</i>	Dense-leaved Pussytoes	Sensitive
<i>Antennaria howellii</i>	Howell's Pussytoes	May be at Risk
<i>Antennaria media</i>	Rocky Mountain Pussytoes	May be at Risk
<i>Antennaria microphylla</i>	Small-leaved Pussytoes	Sensitive
<i>Aphragmus eschscholtzianus</i>	Aleutian Cress	May be at Risk
<i>Apocynum androsaemifolium</i>	Spreading Dogbane	Sensitive
<i>Aquilegia formosa</i>	Sitka Columbine	Sensitive
<i>Arabidopsis salsuginea</i>	Saltwater Cress	May be at Risk
<i>Arabis arenicola</i>	Arctic Rockcress	May be at Risk
<i>Arabis boivinii</i>	Boivin's Rockcress	May be at Risk
<i>Arabis calderi</i>	Calder's Rockcress	Sensitive
<i>Arabis codyi</i>	Cody's Rockcress	May be at Risk
<i>Arabis glabra</i>	Tower Mustard	May be at Risk
<i>Arabis lemmonii</i>	Lemmon's Rockcress	May be at Risk
<i>Arabis lignifera</i>	Owens Valley Rockcress	May be at Risk
<i>Arabis media</i>	Sand-dune Rockcress	May be at Risk
<i>Arabis murrayi</i>	Murray's Rockcress	May be at Risk
<i>Arabis nuttallii</i>	Nuttall's Rockcress	May be at Risk
<i>Arabis sparsiflora</i>	Elegant Rockcress	May be at Risk
<i>Aralia nudicaulis</i>	Wild Sarsaparilla	Sensitive
<i>Arenaria longipedunculata</i>	Long-stemmed Sandwort	May be at Risk
<i>Argentina egedii</i>	Egede Cinquefoil	May be at Risk
<i>Armeria maritima</i>	Labrador Sea Thrift	May be at Risk
<i>Arnica amplexicaulis</i>	Streambank Arnica	May be at Risk
<i>Arnica chamissonis</i>	Leafy Arnica	Sensitive
<i>Arnica mollis</i>	Hairy Arnica	May be at Risk
<i>Arnica parryi</i>	Nodding Arnica	May be at Risk
<i>Artemisia dracunculus</i>	Dragon Wormwood	May be at Risk
<i>Artemisia furcata</i>	Three-forked Wormwood	Sensitive
<i>Artemisia globularia</i>	Boreal Wormwood	May be at Risk
<i>Artemisia glomerata</i>	Wormwood	May be at Risk
<i>Artemisia laciniata</i>	Siberian Wormwood	May be at Risk
<i>Artemisia michauxiana</i>	Michaux's Wormwood	May be at Risk



Scientific Name	Common Name	Yukon Territory Rank
<i>Artemisia rupestris</i>	Rock Wormwood	May be at Risk
<i>Aruncus dioicus</i>	Common Goats-beard	May be at Risk
<i>Asplenium trichomanes-ramosum</i>	Green Spleenwort	May be at Risk
<i>Astragalus agrestis</i>	Meadow Milk-vetch	Sensitive
<i>Astragalus nutzotinensis</i>	Nutzotin's Milk-vetch	Sensitive
<i>Astragalus robbinsii</i>	Robbins' Milk-vetch	May be at Risk
<i>Astragalus tenellus</i>	Loose-flowered Milk-vetch	Sensitive
<i>Astragalus williamsii</i>	Williams' Milk-vetch	Sensitive
<i>Athyrium alpestre</i>	Alpine Lady Fern	May be at Risk
<i>Athyrium filix-femina</i>	Lady Fern	Sensitive
<i>Atriplex dioica</i>	Thick-leaved Orache	May be at Risk
<i>Avenula hookeri</i>	Hooker's Oats	May be at Risk
<i>Betula pumila</i>	Bog Birch	Sensitive
<i>Bidens cernua</i>	Nodding Beggarticks	May be at Risk
<i>Blysmopsis rufa</i>	Red Bulrush	May be at Risk
<i>Botrychium hesperium</i>	Western Moonwort	May be at Risk
<i>Botrychium lanceolatum</i>	Triangle Moonwort	Sensitive
<i>Botrychium lineare</i>	Narrow-leaved Moonwort	May be at Risk
<i>Botrychium multifidum</i>	Leathery Moonwort	May be at Risk
<i>Botrychium pinnatum</i>	Northwestern Moonwort	Sensitive
<i>Botrychium spathulatum</i>	Spatulate Moonwort	May be at Risk
<i>Botrychium tunux</i>	Tunux Moonwort	May be at Risk
<i>Botrychium virginianum</i>	Rattlesnake Fern	Sensitive
<i>Botrychium yaaxudakeit</i>	Yaa Xu da Keit Moonwort	May be at Risk
<i>Braya glabella</i>	Purple Rockcress	Sensitive
<i>Bromus richardsonii</i>	Richardson's Brome	May be at Risk
<i>Calamagrostis deschampsoides</i>	Circumpolar Reed Grass	May be at Risk
<i>Caltha leptosepala</i>	White Marsh Marigold	May be at Risk
<i>Caltha natans</i>	Floating Marsh Marigold	May be at Risk
<i>Caltha palustris</i>	Marsh Marigold	Sensitive
<i>Calypso bulbosa</i>	Calypso	Sensitive
<i>Campanula rotundifolia</i>	Harebell	May be at Risk
<i>Canadanthus modestus</i>	Great Northern Aster	May be at Risk
<i>Cardamine microphylla</i>	Small-leaved Bittercress	Sensitive
<i>Cardamine pennsylvanica</i>	Pennsylvania Bittercress	Sensitive
<i>Carex albonigra</i>	Black-and-white Scale Sedge	Sensitive
<i>Carex anthoxanthea</i>	Yellow-flowered Sedge	May be at Risk
<i>Carex arcta</i>	Northern Clustered Sedge	May be at Risk
<i>Carex athrostachya</i>	Slender-beaked Sedge	May be at Risk
<i>Carex bebbii</i>	Bebb's Sedge	May be at Risk
<i>Carex bicolor</i>	Two-coloured Sedge	May be at Risk
<i>Carex bonanzensis</i>	Yukon Sedge	Sensitive
<i>Carex buxbaumii</i>	Buxbaum's Sedge	Sensitive
<i>Carex crawfordii</i>	Crawford's Sedge	Sensitive
<i>Carex deweyana</i>	Dewey's Sedge	Sensitive
<i>Carex eburnea</i>	Bristle-leaved Sedge	Sensitive
<i>Carex eleusinoides</i>	Goosegrass Sedge	Sensitive
<i>Carex flava</i>	Yellow Sedge	May be at Risk
<i>Carex glareosa</i>	Gravel Sedge	Sensitive

Scientific Name	Common Name	Yukon Territory Rank
<i>Carex heleonastes</i>	Hudson Bay Sedge	May be at Risk
<i>Carex holostoma</i>	Arctic Marsh Sedge	May be at Risk
<i>Carex incurviformis</i>	Curved-spiked Sedge	Sensitive
<i>Carex interior</i>	Inland Sedge	May be at Risk
<i>Carex krausei</i>	Krause's Sedge	Sensitive
<i>Carex lapponica</i>	Lapland Sedge	May be at Risk
<i>Carex lasiocarpa</i>	Slender Sedge	Sensitive
<i>Carex laxa</i>	Weak Sedge	May be at Risk
<i>Carex livida</i>	Livid Sedge	Sensitive
<i>Carex macrochaeta</i>	Large-awned Sedge	Sensitive
<i>Carex marina</i>	Sea Sedge	May be at Risk
<i>Carex maritima</i>	Seaside Sedge	Sensitive
<i>Carex microptera</i>	Small-winged Sedge	Sensitive
<i>Carex nigricans</i>	Black Alpine Sedge	May be at Risk
<i>Carex norvegica</i>	Norway Sedge	May be at Risk
<i>Carex oligosperma</i>	Few-seeded Sedge	May be at Risk
<i>Carex parryana</i>	Parry's Sedge	Sensitive
<i>Carex pauciflora</i>	Few-flowered Sedge	May be at Risk
<i>Carex peckii</i>	Peck's Sedge	May be at Risk
<i>Carex phaeocephala</i>	Dunhead Sedge	Sensitive
<i>Carex praegracilis</i>	Clustered Field Sedge	Sensitive
<i>Carex prairea</i>	Prairie Sedge	May be at Risk
<i>Carex rostrata</i>	Beaked Sedge	Sensitive
<i>Carex sabulosa</i>	Baikal Sedge	May be at Risk
<i>Carex sartwellii</i>	Sartwell's Sedge	May be at Risk
<i>Carex spectabilis</i>	Showy Sedge	May be at Risk
<i>Carex stylosa</i>	Variegated Sedge	May be at Risk
<i>Carex subspathacea</i>	Hoppner's Sedge	Sensitive
<i>Carex sychnocephala</i>	Dense Long-beaked Sedge	Sensitive
<i>Carex ursina</i>	Bear Sedge	Sensitive
<i>Carex viridula</i>	Greenish Sedge	Sensitive
<i>Carex williamsii</i>	Williams' Sedge	Sensitive
<i>Carex xerantica</i>	Dryland Sedge	May be at Risk
<i>Cassiope mertensiana</i>	Western Bell Heather	May be at Risk
<i>Castilleja elegans</i>	Elegant Indian Paintbrush	Sensitive
<i>Castilleja miniata</i>	Greater Red Indian Paintbrush	May be at Risk
<i>Castilleja parviflora</i>	Small-flowered Indian Paintbrush	May be at Risk
<i>Cerastium maximum</i>	Great Chickweed	Sensitive
<i>Ceratophyllum demersum</i>	Common Coontail	Sensitive
<i>Chamaerhodos erecta</i>	Rose Chamaehodos	Sensitive
<i>Chenopodium glaucum</i>	Oak-leaved Goosefoot	May be at Risk
<i>Chenopodium leptophyllum</i>	Slim-leaved Goosefoot	May be at Risk
<i>Chenopodium rubrum</i>	Red Pigweed	Sensitive
<i>Chenopodium simplex</i>	Maple-leaved Goosefoot	May be at Risk
<i>Chimaphila umbellata</i>	Pipsissewa	May be at Risk
<i>Chrysosplenium wrightii</i>	Wright's Golden Saxifrage	Sensitive
<i>Cicuta bulbifera</i>	Bulbous Water-hemlock	May be at Risk
<i>Cicuta maculata</i>	Spotted Water-hemlock	Sensitive
<i>Cicuta virosa</i>	Mackenzie's Water-hemlock	Sensitive

Scientific Name	Common Name	Yukon Territory Rank
<i>Cinna latifolia</i>	Drooping Wood Reed Grass	Sensitive
<i>Circaea alpina</i>	Small Enchanter's Nightshade	May be at Risk
<i>Cirsium foliosum</i>	Leafy Thistle	May be at Risk
<i>Claytonia megarhiza</i>	Alpine Spring Beauty	May be at Risk
<i>Claytonia ogilviensis</i>	Ogilvie Spring Beauty	May be at Risk
<i>Claytonia scammaniana</i>	Scamman's Spring Beauty	Sensitive
<i>Coeloglossum viride</i>	Long-bracted Orchid	May be at Risk
<i>Collinsia parviflora</i>	Small-flowered Blue-eyed Mary	May be at Risk
<i>Collomia linearis</i>	Narrow-leaved Collomia	Sensitive
<i>Comandra umbellata</i>	Bastard's Toadflax	May be at Risk
<i>Corispermum ochotense</i>	Alaskan Bugseed	May be at Risk
<i>Cornus unalaschkensis</i>	Cordilleran Bunchberry	Sensitive
<i>Crassula aquatica</i>	Water Pygmyweed	May be at Risk
<i>Cryptogramma acrostichoides</i>	American Parsley Fern	Sensitive
<i>Cryptogramma sitchensis</i>	Alaska Parsley Fern	May be at Risk
<i>Cryptogramma stelleri</i>	Slender Rock-brake	May be at Risk
<i>Cynoglossum virginianum</i>	Wild Comfrey	May be at Risk
<i>Cypripedium guttatum</i>	Spotted Lady's-slipper	May be at Risk
<i>Cypripedium parviflorum</i>	Yellow Lady's-slipper	May be at Risk
<i>Danthonia spicata</i>	Poverty Oat Grass	May be at Risk
<i>Delphinium brachycentrum</i>	Arctic Larkspur	May be at Risk
<i>Dendranthema arcticum</i>	Arctic Daisy	May be at Risk
<i>Descurainia pinnata</i>	Green Tansy Mustard	May be at Risk
<i>Dianthus repens</i>	Northern Pink	May be at Risk
<i>Diapensia lapponica</i>	Diapensia	Sensitive
<i>Diphasiastrum sitchense</i>	Sitka Clubmoss	May be at Risk
<i>Dodecatheon pulchellum</i>	Few-flowered Shooting Star	May be at Risk
<i>Douglasia alaskana</i>	Alaska Dwarf Primrose	May be at Risk
<i>Douglasia arctica</i>	Mackenzie River Dwarf Primrose	Sensitive
<i>Draba albertina</i>	Slender Whitlow-grass	Sensitive
<i>Draba corymbosa</i>	Flat-topped Whitlow-grass	Sensitive
<i>Draba kluanei</i>	Kluane Whitlow-grass	May be at Risk
<i>Draba lactea</i>	Milky Whitlow-grass	Sensitive
<i>Draba lonchocarpa</i>	Lance-podded Whitlow-grass	Sensitive
<i>Draba macounii</i>	Macoun's Whitlow-grass	Sensitive
<i>Draba murrayi</i>	Murray's Whitlow-grass	May be at Risk
<i>Draba nemorosa</i>	Woodland Whitlow-grass	Sensitive
<i>Draba ogilviensis</i>	Ogilvie Range Whitlow-grass	Sensitive
<i>Draba oligosperma</i>	Few-seeded Whitlow-grass	Sensitive
<i>Draba porsildii</i>	Porsild's Whitlow-grass	May be at Risk
<i>Draba ruaxes</i>	Rainier Whitlow-grass	May be at Risk
<i>Draba scotteri</i>	Scotter's Whitlow-grass	May be at Risk
<i>Draba stenoloba</i>	Alaska Whitlow-grass	Sensitive
<i>Draba stenopetala</i>	Anadyr Whitlow-grass	May be at Risk
<i>Draba ventosa</i>	Wind River Whitlow-grass	May be at Risk
<i>Draba yukonensis</i>	Yukon Whitlow-grass	May be at Risk
<i>Drosera anglica</i>	English Sundew	Sensitive
<i>Dryopteris carthusiana</i>	Spinulose Wood Fern	May be at Risk
<i>Dryopteris expansa</i>	Northern Wood Fern	Sensitive

Scientific Name	Common Name	Yukon Territory Rank
<i>Dupontia fisheri</i>	Fisher's Tundra Grass	Sensitive
<i>Elatine triandra</i>	Long-stemmed Waterwort	May be at Risk
<i>Eleocharis uniglumis</i>	Single-glumed Spike-rush	May be at Risk
<i>Elymus glaucus</i>	Blue Wild Rye	Sensitive
<i>Elymus hyperarcticus</i>	Tundra Wild Rye	Sensitive
<i>Epilobium arcticum</i>	Arctic Willowherb	May be at Risk
<i>Epilobium clavatum</i>	Talus Willowherb	May be at Risk
<i>Epilobium davuricum</i>	Dahurian Willowherb	May be at Risk
<i>Epilobium lactiflorum</i>	White-flowered Willowherb	Sensitive
<i>Eremogone capillaris</i>	Slender Mountain Sandwort	Sensitive
<i>Erigeron grandiflorus</i>	Large-flowered Fleabane	Sensitive
<i>Erigeron hyperboreus</i>	Tundra Fleabane	May be at Risk
<i>Erigeron hyssopifolius</i>	Hyssop-leaved Fleabane	Sensitive
<i>Erigeron muirii</i>	Muir's Fleabane	May be at Risk
<i>Erigeron ochroleucus</i>	Buff Fleabane	May be at Risk
<i>Erigeron peregrinus</i>	Foreign Fleabance	May be at Risk
<i>Erigeron philadelphicus</i>	Philadelphia Fleabane	May be at Risk
<i>Erigeron purpuratus</i>	Fleabane	Sensitive
<i>Erigeron uniflorus</i>	One-flowered Fleabane	Sensitive
<i>Erigeron yukonensis</i>	Yukon Fleabane	May be at Risk
<i>Eriogonum flavum</i>	Yellow Buckwheat	May be at Risk
<i>Eriophorum gracile</i>	Slender Cottongrass	May be at Risk
<i>Eriophorum viridicarinatum</i>	Green-keeled Cottongrass	May be at Risk
<i>Eritrichium splendens</i>	Showy Forget-me-not	May be at Risk
<i>Erysimum angustatum</i>	Narrow-leaved Wallflower	May be at Risk
<i>Festuca brevissima</i>	Alaska Fescue	Sensitive
<i>Festuca hyperborea</i>	Northern Fescue	May be at Risk
<i>Festuca lenensis</i>	Tundra Fescue	Sensitive
<i>Festuca minutiflora</i>	Small-flowered Fescue	May be at Risk
<i>Fritillaria camschatcensis</i>	Kamchatka Fritillary	May be at Risk
<i>Galium triflorum</i>	Fragrant Bedstraw	Sensitive
<i>Gentianella tenella</i>	Dane's Gentian	May be at Risk
<i>Gentianopsis detonsa</i>	Sheared Gentian	Sensitive
<i>Geranium bicknellii</i>	Bicknell's Geranium	Sensitive
<i>Geranium erianthum</i>	Northern Crane's-bill	Sensitive
<i>Geranium richardsonii</i>	Richardson Geranium	Sensitive
<i>Geum aleppicum</i>	Yellow Avens	Sensitive
<i>Geum triflorum</i>	Prairie-smoke	May be at Risk
<i>Glaux maritima</i>	Sea Milkwort	May be at Risk
<i>Glyceria borealis</i>	Northern Manna Grass	Sensitive
<i>Glyceria grandis</i>	Common Tall Manna Grass	Sensitive
<i>Glyceria pulchella</i>	Graceful Manna Grass	Sensitive
<i>Glyceria striata</i>	Fowl Manna Grass	Sensitive
<i>Gymnocarpium jessoense</i>	Nahanni Oak Fern	Sensitive
<i>Halimolobos mollis</i>	Soft Fissurewort	Sensitive
<i>Harrimanella stelleriana</i>	Starry Bell Heather	May be at Risk
<i>Hieracium albiflorum</i>	White-flowered Hawkweed	May be at Risk
<i>Hieracium umbellatum</i>	Umbellate Hawkweed	Sensitive
<i>Hierochloë pauciflora</i>	Arctic Sweet Grass	May be at Risk

Scientific Name	Common Name	Yukon Territory Rank
<i>Hippuris montana</i>	Mountain Maretail	May be at Risk
<i>Hippuris tetraphylla</i>	Four-leaved Maretail	Sensitive
<i>Hordeum brachyantherum</i>	Meadow Barley	Sensitive
<i>Iris setosa</i>	Beach-head Iris	May be at Risk
<i>Isoëtes echinospora</i>	Spiny-spored Quillwort	May be at Risk
<i>Isoëtes maritima</i>	Maritime Quillwort	May be at Risk
<i>Juncus nodosus</i>	Knotted Rush	Sensitive
<i>Juncus stygius</i>	Moor Rush	May be at Risk
<i>Koeleria asiatica</i>	Oriental June Grass	Sensitive
<i>Koeleria macrantha</i>	Prairie June Grass	Sensitive
<i>Koenigia islandica</i>	Iceland Purslane	Sensitive
<i>Krascheninnikovia lanata</i>	Winterfat	May be at Risk
<i>Lactuca biennis</i>	Tall Blue Lettuce	May be at Risk
<i>Lathyrus japonicus</i>	Beach Pea	May be at Risk
<i>Lathyrus ochroleucus</i>	Cream Vetchling	Sensitive
<i>Leptarrhena pyrolifolia</i>	Leather-leaved Saxifrage	Sensitive
<i>Lesquerella arctica</i>	Arctic Bladderpod	Sensitive
<i>Lesquerella calderi</i>	Calder's Bladderpod	Sensitive
<i>Lewisia pygmaea</i>	Alpine Lewisia	May be at Risk
<i>Leymus mollis</i>	Sea Lyme Grass	Sensitive
<i>Limosella aquatica</i>	Northern Mudwort	Sensitive
<i>Lonicera dioica</i>	Mountain Honeysuckle	May be at Risk
<i>Luetkea pectinata</i>	Segmented Luetke	Sensitive
<i>Lupinus kuschei</i>	Yukon Lupine	Sensitive
<i>Lupinus nootkatensis</i>	Nootka Lupine	May be at Risk
<i>Luzula groenlandica</i>	Greenland Woodrush	May be at Risk
<i>Luzula piperi</i>	Piper's Woodrush	Sensitive
<i>Luzula wahlenbergii</i>	Wahlenberg's Woodrush	Sensitive
<i>Lycopodium dendroideum</i>	Prickly Tree Clubmoss	May be at Risk
<i>Lysimachia thysiflora</i>	Tufted Yellow Loosestrife	May be at Risk
<i>Maianthemum canadense</i>	Wild Lily-of-the-valley	Sensitive
<i>Maianthemum trifolium</i>	Three-leaved False Solomon's Seal	Sensitive
<i>Malaxis paludosa</i>	Bog Adder's-mouth	May be at Risk
<i>Matteuccia struthiopteris</i>	Ostrich Fern	May be at Risk
<i>Mentha arvensis</i>	Wild Mint	Sensitive
<i>Mertensia maritima</i>	Sea Lungwort	May be at Risk
<i>Mimulus guttatus</i>	Common Large Monkey Flower	Sensitive
<i>Minuartia macrocarpa</i>	Long-Pod Stitchwort	Sensitive
<i>Minuartia rossii</i>	Ross' Stitchwort	May be at Risk
<i>Minuartia stricta</i>	Bog Stitchwort	Sensitive
<i>Minuartia yukonensis</i>	Yukon Stitchwort	Sensitive
<i>Mitella pentandra</i>	Five-Stamen Bishop's-cap	May be at Risk
<i>Monolepis nuttalliana</i>	Nuttall's Povertyweed	Sensitive
<i>Montia bostockii</i>	Bostock's Montia	Sensitive
<i>Montia fontana</i>	Water Blinks	May be at Risk
<i>Muhlenbergia glomerata</i>	Spiked Muhly	May be at Risk
<i>Muhlenbergia mexicana</i>	Mexican Muhly	May be at Risk
<i>Muhlenbergia richardsonis</i>	Mat Muhly	Sensitive
<i>Myriophyllum verticillatum</i>	Whorled Water Milfoil	Sensitive

Scientific Name	Common Name	Yukon Territory Rank
<i>Najas flexilis</i>	Slender Naiad	May be at Risk
<i>Nuphar variegata</i>	Variegated Pond-lily	Sensitive
<i>Oplopanax horridus</i>	Devil's Club	May be at Risk
<i>Orobanche fasciculata</i>	Clustered Broomrape	Sensitive
<i>Orthocarpus luteus</i>	Yellow Owl-clover	May be at Risk
<i>Oryzopsis asperifolia</i>	White-grained Mountain Rice	Sensitive
<i>Osmorhiza depauperata</i>	Blunt Sweet Cicely	Sensitive
<i>Oxytropis arctica</i>	Arctic Locoweed	May be at Risk
<i>Oxytropis huddelsonii</i>	Huddelson's Locoweed	Sensitive
<i>Oxytropis mertensiana</i>	Mertens' Locoweed	May be at Risk
<i>Oxytropis sericea</i>	Silky Locoweed	May be at Risk
<i>Packera hyperborealis</i>	Boreal Groundsel	Sensitive
<i>Papaver alboroseum</i>	Pale Poppy	May be at Risk
<i>Papaver gorodkovii</i>	Russian Poppy	May be at Risk
<i>Papaver mcconnellii</i>	McConnell's Poppy	Sensitive
<i>Papaver nudicaule</i>	Iceland Poppy	Sensitive
<i>Papaver walpolei</i>	Walpole's Poppy	May be at Risk
<i>Parietaria pensylvanica</i>	Pennsylvania Pellitory	May be at Risk
<i>Pedicularis groenlandica</i>	Greenland Lousewort	May be at Risk
<i>Pedicularis lapponica</i>	Lapland Lousewort	Sensitive
<i>Pedicularis macrodonta</i>	Muskeg Lousewort	May be at Risk
<i>Persicaria lapathifolia</i>	Pale Smartweed	May be at Risk
<i>Persicaria pensylvanica</i>	Pennsylvania Smartweed	May be at Risk
<i>Phacelia mollis</i>	Coffee Creek Scorpionweed	Sensitive
<i>Phalaris arundinacea</i>	Reed Canary Grass	Sensitive
<i>Phegopteris connectilis</i>	Northern Beech Fern	May be at Risk
<i>Phippisia algida</i>	Ice Grass	Sensitive
<i>Phyllodoce glanduliflora</i>	Yellow Mountain Heather	Sensitive
<i>Pinguicula macroceras</i>	California Butterwort	May be at Risk
<i>Piptatherum pungens</i>	Slender Rice Grass	May be at Risk
<i>Plantago eriopoda</i>	Red Woolly Plantain	Sensitive
<i>Plantago major</i>	Common Plantain	Sensitive
<i>Plantago maritima</i>	Seaside Plantain	May be at Risk
<i>Platanthera dilatata</i>	White Bog Orchid	Sensitive
<i>Platanthera orbiculata</i>	Small Round-leaved Orchid	Sensitive
<i>Platanthera stricta</i>	Slender Bog Orchid	May be at Risk
<i>Poa abbreviata</i>	Northern Blue Grass	May be at Risk
<i>Poa cusickii</i>	Cusick's Blue Grass	May be at Risk
<i>Poa interior</i>	Inland Blue Grass	Sensitive
<i>Poa porsildii</i>	Porsild's Blue Grass	Sensitive
<i>Poa pseudoabbreviata</i>	Polar Blue Grass	May be at Risk
<i>Poa secunda</i>	Curly Blue Grass	Sensitive
<i>Podistera macounii</i>	Macoun's Podistera	May be at Risk
<i>Podistera yukonensis</i>	Yukon Podistera	May be at Risk
<i>Polygonum douglasii</i>	Douglas' Knotweed	May be at Risk
<i>Polygonum humifusum</i>	Alaska Knotweed	Sensitive
<i>Polypodium sibiricum</i>	Siberian Polypody	May be at Risk
<i>Polystichum kruckebergii</i>	Kruckeberg's Sword Fern	May be at Risk
<i>Polystichum lonchitis</i>	Northern Holly Fern	May be at Risk

Scientific Name	Common Name	Yukon Territory Rank
<i>Potamogeton foliosus</i>	Leafy Pondweed	May be at Risk
<i>Potamogeton obtusifolius</i>	Blunt-leaved Pondweed	May be at Risk
<i>Potamogeton praelongus</i>	White-stemmed Pondweed	Sensitive
<i>Potamogeton strictifolius</i>	Straight-leaved Pondweed	May be at Risk
<i>Potamogeton subsibiricus</i>	Yenissee River Pondweed	May be at Risk
<i>Potamogeton zosteriformis</i>	Flat-stemmed Pondweed	Sensitive
<i>Potentilla bimundorum</i>	Staghorn Cinquefoil	Sensitive
<i>Potentilla bipinnatifida</i>	Tansy Cinquefoil	May be at Risk
<i>Potentilla elegans</i>	Elegant Cinquefoil	Sensitive
<i>Potentilla nivea</i>	Snowy Cinquefoil	Sensitive
<i>Potentilla ovina</i>	Sheep Cinquefoil	May be at Risk
<i>Potentilla pulchella</i>	Pretty Cinquefoil	May be at Risk
<i>Potentilla rubricaulis</i>	Rocky Mountain Cinquefoil	Sensitive
<i>Primula borealis</i>	Slender Primrose	Sensitive
<i>Primula egaliksensis</i>	Greenland Primrose	Sensitive
<i>Primula eximia</i>	Arctic Primrose	Sensitive
<i>Primula incana</i>	Mealy Primrose	Sensitive
<i>Primula mistassinica</i>	Lake Mistassini Primrose	Sensitive
<i>Primula nutans</i>	Arctic Primrose	Sensitive
<i>Prunella vulgaris</i>	Common Heal-all	May be at Risk
<i>Puccinellia distans</i>	Spreading Alkali Grass	May be at Risk
<i>Puccinellia nutkaensis</i>	Nootka Alkali Grass	Sensitive
<i>Puccinellia nuttalliana</i>	Nuttall's Alkali Grass	Sensitive
<i>Puccinellia phryganodes</i>	Creeping Alkali Grass	Sensitive
<i>Puccinellia vaginata</i>	Tussock Alkali Grass	Sensitive
<i>Puccinellia vahliana</i>	Vahl's Alkali Grass	May be at Risk
<i>Ranunculus abortivus</i>	Kidney-leaved Buttercup	Sensitive
<i>Ranunculus cymbalaria</i>	Seaside Buttercup	Sensitive
<i>Ranunculus gelidus</i>	Arctic Buttercup	May be at Risk
<i>Ranunculus occidentalis</i>	Western Buttercup	Sensitive
<i>Ranunculus pallasii</i>	Pallas' Buttercup	Sensitive
<i>Ranunculus pedatifidus</i>	Northern Buttercup	Sensitive
<i>Ranunculus turneri</i>	Turner's Buttercup	Sensitive
<i>Ribes laxiflorum</i>	Trailing Black Currant	May be at Risk
<i>Rorippa barbareaifolia</i>	Hoary Yellowcress	Sensitive
<i>Rosa woodsii</i>	Wood's Rose	May be at Risk
<i>Rubus pedatus</i>	Five-leaved Dwarf Bramble	May be at Risk
<i>Rubus pubescens</i>	Dwarf Red Raspberry	Sensitive
<i>Rumex beringensis</i>	Bering Sea Dock	May be at Risk
<i>Rumex fueginus</i>	Tierra del Fuego Dock	Sensitive
<i>Rumex lapponicus</i>	Lapland Sorrel	May be at Risk
<i>Rumex sibiricus</i>	Siberian Dock	Sensitive
<i>Ruppia cirrhosa</i>	Spiral Ditchgrass	May be at Risk
<i>Sagina nivalis</i>	Snow Pearlwort	Sensitive
<i>Sagina saginoides</i>	Alpine Pearlwort	Sensitive
<i>Sagittaria cuneata</i>	Northern Arrowhead	Sensitive
<i>Salicornia rubra</i>	Red Glasswort	May be at Risk
<i>Salix arctophila</i>	Northern Willow	May be at Risk
<i>Salix athabascensis</i>	Athabasca Willow	Sensitive

Scientific Name	Common Name	Yukon Territory Rank
<i>Salix brachycarpa</i>	Short-capsuled Willow	Sensitive
<i>Salix candida</i>	Hoary Willow	Sensitive
<i>Salix chamissonis</i>	Chamisso's Willow	Sensitive
<i>Salix commutata</i>	Under-green Willow	Sensitive
<i>Salix drummondiana</i>	Drummond's Willow	Sensitive
<i>Salix farriae</i>	Farr's Willow	Sensitive
<i>Salix maccalliana</i>	Mccalla's Willow	May be at Risk
<i>Salix ovalifolia</i>	Oval-leaved Willow	Sensitive
<i>Salix pedicellaris</i>	Bog Willow	May be at Risk
<i>Salix prolixa</i>	Mackenzie's Willow	May be at Risk
<i>Salix pyrifolia</i>	Balsam Willow	May be at Risk
<i>Salix raupii</i>	Raup's Willow	May be at Risk
<i>Salix rotundifolia</i>	Round-leaved Willow	Sensitive
<i>Salix setchelliana</i>	Setchell's Willow	Sensitive
<i>Sambucus racemosa</i>	Red Elderberry	May be at Risk
<i>Sanguisorba officinalis</i>	Great Burnet	Sensitive
<i>Saussurea americana</i>	American Saw-wort	May be at Risk
<i>Saussurea viscida</i>	Sticky Saw-wort	May be at Risk
<i>Saxifraga eschscholtzii</i>	Cushion Saxifrage	May be at Risk
<i>Saxifraga foliolosa</i>	Leafy Saxifrage	Sensitive
<i>Saxifraga nivalis</i>	Snow Saxifrage	Sensitive
<i>Saxifraga spicata</i>	Spiked Saxifrage	May be at Risk
<i>Scheuchzeria palustris</i>	Marsh Scheuchzeria	Sensitive
<i>Schizachne purpurascens</i>	Purple Oat Grass	Sensitive
<i>Schoenoplectus acutus</i>	Hard-stemmed Bulrush	Sensitive
<i>Schoenoplectus tabernaemontani</i>	Soft-stemmed Bulrush	Sensitive
<i>Scirpus microcarpus</i>	Small-fruited Bulrush	Sensitive
<i>Scolochloa festucacea</i>	Common River Grass	May be at Risk
<i>Scutellaria galericulata</i>	Hooded Skullcap	Sensitive
<i>Senecio sheldonensis</i>	Mount Sheldon Ragwort	May be at Risk
<i>Silene williamsii</i>	William's Catchfly	May be at Risk
<i>Sisyrinchium montanum</i>	Mountain Blue-eyed-grass	Sensitive
<i>Sium suave</i>	Water Parsnip	May be at Risk
<i>Smelowskia borealis</i>	Boreal Smelowskia	Sensitive
<i>Smelowskia calycina</i>	Alpine Smelowskia	Sensitive
<i>Sorbus scopulina</i>	Greene Mountain Ash	Sensitive
<i>Sorbus sitchensis</i>	Sitka Mountain Ash	May be at Risk
<i>Sparganium natans</i>	Small Burreed	Sensitive
<i>Sphenopholis intermedia</i>	Slender Wedge Grass	May be at Risk
<i>Stellaria alaskana</i>	Alaska Starwort	May be at Risk
<i>Stellaria calycantha</i>	Northern Bog Starwort	Sensitive
<i>Stellaria dicranoides</i>	Matted Starwort	May be at Risk
<i>Stellaria umbellata</i>	Umbrella Starwort	May be at Risk
<i>Stenotus macleanii</i>	Maclean's Goldenweed	May be at Risk
<i>Streptopus amplexifolius</i>	Clasping-leaved Twisted-stalk	Sensitive
<i>Suaeda calceoliformis</i>	Horned Sea-blite	May be at Risk
<i>Subularia aquatica</i>	Water Awlwort	Sensitive
<i>swertia perennis</i>	Felwort	May be at Risk
<i>Symphotrichum boreale</i>	Boreal Aster	May be at Risk



Scientific Name	Common Name	Yukon Territory Rank
<i>Symphotrichum ciliatum</i>	Alkali Aster	May be at Risk
<i>Symphotrichum ciliolatum</i>	Ciliolate Aster	Sensitive
<i>Symphotrichum laeve</i>	Smooth Blue Aster	May be at Risk
<i>Symphotrichum yukonense</i>	Yukon Aster	May be at Risk
<i>Synthyris borealis</i>	Alaska Kitten's Tail	Sensitive
<i>Tanacetum bipinnatum</i>	Floccose Tansy	Sensitive
<i>Taraxacum carneocoloratum</i>	Pink Dandelion	May be at Risk
<i>Tephrosieris kjellmanii</i>	Kjellman's Groundsel	Sensitive
<i>Thalictrum occidentale</i>	Western Meadow-rue	Sensitive
<i>Thlaspi arcticum</i>	Arctic Pennycress	May be at Risk
<i>Torreyochloa pallida</i>	Pale False Manna Grass	May be at Risk
<i>Townsendia hookeri</i>	Hooker's Townsend Daisy	Sensitive
<i>Toxicodendron rydbergii</i>	Northern Poison Oak	May be at Risk
<i>Triantha glutinosa</i>	Sticky False Asphodel	Sensitive
<i>Trichophorum alpinum</i>	Alpine Cottongrass	Sensitive
<i>Trichophorum pumilum</i>	Dwarf Clubrush	Sensitive
<i>Trientalis borealis</i>	Northern Starflower	May be at Risk
<i>Tripleurospermum maritima</i>	Seashore Chamomile	May be at Risk
<i>Trisetum sibiricum</i>	Siberian False Oats	May be at Risk
<i>Typha latifolia</i>	Broad-leaved Cattail	Sensitive
<i>Utricularia minor</i>	Lesser Bladderwort	Sensitive
<i>Vaccinium caespitosum</i>	Dwarf Bilberry	Sensitive
<i>Vaccinium membranaceum</i>	Mountain Huckleberry	May be at Risk
<i>Vaccinium ovalifolium</i>	Oval-leaved Bilberry	Sensitive
<i>Vahlodea atropurpurea</i>	Mountain Hair Grass	Sensitive
<i>Veronica peregrina</i>	Purslane Speedwell	May be at Risk
<i>Veronica scutellata</i>	Marsh Speedwell	Sensitive
<i>Vicia americana</i>	Purple Vetch	Sensitive
<i>Viola adunca</i>	Sand Violet	Sensitive
<i>Viola biflora</i>	Northern Violet	May be at Risk
<i>Viola canadensis</i>	Canada Violet	Sensitive
<i>Viola langsdorfii</i>	Aleutian Violet	Sensitive
<i>Viola nephrophylla</i>	Northern Bog Violet	May be at Risk
<i>Viola selkirkii</i>	Great-spurred Violet	May be at Risk
<i>Woodsia alpina</i>	Alpine Woodsia	Sensitive
<i>Woodsia ilvensis</i>	Rusty Woodsia	May be at Risk
<i>Woodsia scopulina</i>	Mountain Woodsia	May be at Risk
<i>Zannichellia palustris</i>	Horned Pondweed	May be at Risk
<i>Zizia aptera</i>	Heart-leaved Alexanders	May be at Risk

## Rare and Threatened Vascular Plant Species Tracked by the Yukon Government

Scientific Name	Common Name	S Rank	New S Rank	NOTES
<i>Aconitum delphiniifolium</i> ssp. <i>paradoxum</i>		S3		
<i>Actaea rubra</i> ssp. <i>arguta</i>	Red Baneberry	S2S3		
<i>Agrostis clavata</i>	Clubbed Bent	S1		
<i>Agrostis exarata</i>	Spike Redtop	S2S3		
<i>Agrostis humilis</i>	Alpine Bent Grass	S1		
<i>Agrostis mertensii</i>	Red Bent Grass	S2S3		
<i>Alisma triviale</i>	Water-plantain	S1		
<i>Alnus crispa</i> ssp. <i>sinuata</i>	Sitka Alder	S2	S2S3	
<i>Alyssum obovatum</i>	American Alyssum	S2S3		
<i>Anaphalis margaritacea</i>	Pearly Everlasting	S1		
<i>Anemone multiceps</i>	Porcupine River Thimbleweed	S1	S2	more common than previously thought
<i>Angelica lucida</i>	Angelica	S2		
<i>Antennaria friesiana</i> ssp. <i>alaskana</i>		S3		
<i>Antennaria howellii</i>	Howell's Pussytoes	S2		
<i>Antennaria howellii</i> ssp. <i>canadensis</i>		S1		
<i>Antennaria howellii</i> ssp. <i>howellii</i>	Howell's Pussytoes	S1		
<i>Antennaria media</i>		S2		
<i>Antennaria microphylla</i>	Small-leaf Cat's-foot	S2		
<i>Aphragmus eschscholtzianus</i>		S1	S2S3	more common than previously thought; all populations are within protected areas
<i>Aquilegia formosa</i>	Crimson Columbine	S2		
<i>Aquilegia formosa</i> var. <i>formosa</i>		S2		
<i>Arabis boivinii</i>	Boivin's Rockcress	S1		
<i>Arabis calderi</i>	Calder's Rockcress	S3		
<i>Arabis codyi</i>	Cody's Rockcress	S1		
<i>Arabis columbiana</i>	Elegant Rockcress	S1		
<i>Arabis drepanoloba</i>	Soldier Rockcress	S1		
<i>Arabis eschscholtziana</i>	Eschscholtz's Rockcress	S1S2		
<i>Arabis glabra</i>	Tower Mustard	S1		
<i>Arabis glabra</i> var.	Tower Mustard	S1		

Scientific Name	Common Name	S Rank	New S Rank	NOTES
<i>glabra</i>				
<i>Arabis lemmonii</i>	Lemmon's Rockcress	S1		
<i>Arabis lemmonii</i> <i>var. lemmonii</i>	Lemmon's Rockcress	S1		
<i>Arabis lignifera</i>	Woody-branched Rockcress	S1		
<i>Arabis media</i>	Sund-dune Rockcress	S2	SH	not relocated in recent surveys
<i>Arabis murrayi</i>		S1		
<i>Arabis nuttallii</i>	Nuttall Rock-cress	S2		
<i>Arabis pinetorum</i>		S2		
<i>Arabis sparsiflora</i>	Elegant Rock-cress	S1		
<i>Aralia nudicaulis</i>	Wild Sarsaparilla	S2S3		
<i>Arenaria capillaris</i>	Fescue Sandwort	S3	S3S4	Locally common occurring in large widespread populations
<i>Arenaria capillaris</i> <i>ssp. capillaris</i>		S3	S3S4	Locally common occurring in large widespread populations
<i>Arenaria</i> <i>longipedunculata</i>	Low Sandwort	S2		
<i>Armeria maritima</i>	Western Thrift	S2	S1S2	several populations along the coast not relocated
<i>Armeria maritima</i> <i>ssp. arctica</i>		S2	S1S2	several populations along the coast not relocated
<i>Arnica angustifolia</i> <i>ssp. tomentosa</i>	Alpine Arnica	S1		
<i>Arnica chamissonis</i>	Leafy Arnica	S3		
<i>Arnica chamissonis</i> <i>ssp. chamissonis</i>		S3		
<i>Arnica chamissonis</i> <i>ssp. foliosa</i>	Leafy Leopardbane	S2		
<i>Arnica chamissonis</i> <i>ssp. incana</i>		S2		
<i>Arnica mollis</i>	Hairy Arnica	S2		
<i>Arnica parryi</i>	Nodding Arnica	S1		
<i>Artemisia arctica</i> <i>ssp. comata</i>		S1	S3	Locally common and the majority of populations occur in Ivavik National Park
<i>Artemisia</i> <i>dracuncululus</i>	Dragonwort	S2	S2S3	more widespread than previously thought, local populations larger

Scientific Name	Common Name	S Rank	New S Rank	NOTES
				than previously thought, several in protected areas
<i>Artemisia globularia</i>	Arctic Wormwood	S2	S2S3	most sites remote with few threats, most are within Ivavik National Park
<i>Artemisia glomerata</i>	Pacific Alpine Wormwood	S2	S2S3	most sites remote with few threats, most are within Ivavik National Park
<i>Artemisia laciniata</i>	Siberian Wormwood	S1		
<i>Artemisia michauxiana</i>	Michaux Wormwood	S1		
<i>Artemisia rupestris</i>	Rock Wormwood	S2		
<i>Artemisia rupestris</i> ssp. <i>woodii</i>		S2		
<i>Aruncus dioicus</i>	Common Goatsbeard	S1		
<i>Aruncus dioicus</i> var. <i>acuminatus</i>		S1		
<i>Asplenium trichomanes-ramosum</i>	Green Spleenwort	S1		
<i>Aster borealis</i>	Boreal Aster	S2S3		
<i>Aster brachyactis</i>	Alkali Rayless Aster	S1		
<i>Aster ciliolatus</i>	Fringed Aster	S2S3		
<i>Aster laevis</i>	Smooth Aster	S1		
<i>Aster laevis</i> ssp. <i>geyeri</i>	Smooth Aster	S1		
<i>Aster modestus</i>	Western Bog Aster	S3		
<i>Aster yukonensis</i>	Yukon Aster	S1S2	S2	locally common and some populations protected, two known sites destroyed by highway construction at Kluane Lake and Donjek River
<i>Astragalus adsurgens</i> ssp. <i>robustior</i>		S1S2		
<i>Astragalus agrestis</i>	Purple Milk-vetch	S2S3		
<i>Astragalus nutzotinensis</i>	Nutzotin Milk-vetch	S3		
<i>Astragalus robbinsii</i>	Robbins Milkvetch	S1		
<i>Astragalus robbinsii</i> var. <i>minor</i>	Robbins' Milkvetch	S1		

Scientific Name	Common Name	S Rank	New S Rank	NOTES
<i>Astragalus tenellus</i>	Loose-flower Milk-vetch	S3		
<i>Athyrium alpestre</i> <i>ssp. americanum</i>		S1		
<i>Athyrium filix-femina</i>	Subarctic Lady-fern	S2S3		
<i>Athyrium filix-femina</i> <i>var. cyclosorum</i>		S2S3		
<i>Betula pumila</i>	Swamp Birch	S2		
<i>Betula pumila</i> var. <i>glandulifera</i>	Dwarf Birch	S2		
<i>Bidens cernua</i>	Nodding Beggar-ticks	S2		
<i>Botrychium</i> <i>hesperium</i>	Western Moonwort	S1		
<i>Botrychium</i> <i>lanceolatum</i>	Triangle Grape-fern	S2		
<i>Botrychium</i> <i>lanceolatum</i> var. <i>lanceolatum</i>	Lance-leaved Moonwort	S2		
<i>Botrychium lineare</i>	Narrow-leaf Grape-fern	S1		
<i>Botrychium</i> <i>multifidum</i>	Leathery Grape-fern	S1		
<i>Botrychium</i> <i>pinnatum</i>	Northern Moonwort	S2S3		
<i>Botrychium</i> <i>spatulatum</i>	Spoon-leaf Moonwort	S1S2		
<i>Botrychium tunux</i>	Tunux' Moonwort	S1		
<i>Botrychium</i> <i>virginianum</i>	Rattlesnake Fern	S2		
<i>Botrychium</i> <i>yaaxudakeit</i>	Yaa Xu da Keit's Moonworts	S1		
<i>Braya glabella</i>	Smooth Rockcress	S3		
<i>Braya glabella</i> ssp. <i>glabella</i>		S2S3		
<i>Braya glabella</i> ssp. <i>purpurascens</i>		S2		
<i>Calamagrostis</i> <i>deschampsoides</i>	Circumpolar Small- reedgrass	S2S3		
<i>Callitriche anceps</i>	Large Water-starwort	S1S2		
<i>Callitriche anceps</i>	Large Water-starwort	S1S2		
<i>Caltha leptosepala</i>	Slender-sepal Marsh- marigold	S2		
<i>Caltha natans</i>	Floating Marsh-marigold	S2		
<i>Campanula</i> <i>rotundifolia</i>	Round-leaved Harebell	S2		
<i>Carex albonigra</i>	Two-tone Sedge	S2		
<i>Carex aquatilis</i> ssp. <i>stans</i>		S2S3		
<i>Carex arcta</i>	Northern Clustered Sedge	S2		
<i>Carex bebbii</i>	Bebb's Sedge	S1S3	S2S3	
<i>Carex bicolor</i>	Two-color Sedge	S2	S3	
<i>Carex bonanzensis</i>	Yukon Sedge	S3		

Scientific Name	Common Name	S Rank	New S Rank	NOTES
<i>Carex buxbaumii</i>	Buxbaum's Sedge	S2	S2S3	
<i>Carex deweyana</i>	Short-scale Sedge	S2		
<i>Carex deweyana</i> <i>var. deweyana</i>	Short-scale Sedge	S2		
<i>Carex eburnea</i>	Ebony Sedge	S2S3		
<i>Carex eleusinoides</i>	A Sedge	S3		
<i>Carex flava</i>	Yellow Sedge	S1		
<i>Carex glareosa</i>	Lesser Saltmarsh Sedge	S2S3	S3	
<i>Carex glareosa</i> ssp. <i>glareosa</i>	Salt Marsh Sedge	S2S3	S3	
<i>Carex heleonastes</i>	Hudson Bay Sedge	S1		
<i>Carex holostoma</i>	Arctic Marsh Sedge	S1	S1S2	
<i>Carex incurviformis</i>	Curved Spiked Sedge	S2S3		
<i>Carex interior</i>	Inland Sedge	S1S2		
<i>Carex krausei</i>		S3		
<i>Carex lapponica</i>		S2		
<i>Carex lasiocarpa</i>	Slender Sedge	S2		
<i>Carex laxa</i>	Weak Sedge	S1		
<i>Carex lenticularis</i> <i>var. dolia</i>	Goose-grass Sedge	S1		
<i>Carex lenticularis</i> <i>var. lipocarpa</i>	A Sedge	S1		
<i>Carex livida</i>	Livid Sedge	S2S3		
<i>Carex mackenziei</i>	Mackenzie Sedge	S1	S3	Locally abundant and often dominating local habitats
<i>Carex macrochaeta</i>	Alaska Large Awn Sedge	S2		
<i>Carex marina</i>	Marine Sedge	S1S2	S1	many of the specimens reported to be <i>C.marina</i> have been reidentified
<i>Carex maritima</i>	Seaside Sedge	S3		
<i>Carex nigricans</i>		S1		
<i>Carex norvegica</i>	Scandinavian Sedge	S1		
<i>Carex oligosperma</i>		S1		
<i>Carex pachystachya</i>	A Sedge	S1S2		
<i>Carex parryana</i>	Parry Sedge	S2S3		
<i>Carex pauciflora</i>	Few-flowered Sedge	S1		
<i>Carex peckii</i>	White-tinged Sedge	S1		
<i>Carex phaeocephala</i>	A Sedge	S2S3		
<i>Carex praegracilis</i>	Clustered Field Sedge	S2S3		
<i>Carex prairea</i>	Prairie Sedge	S1		
<i>Carex ramenskii</i>	Ramenski Sedge	S1	S2S3	More common than previously thought
<i>Carex rostrata</i>	Beaked Sedge	S2	S3	

Scientific Name	Common Name	S Rank	New S Rank	NOTES
<i>Carex sabulosa</i>	Sand Sedge	S2		
<i>Carex sabulosa</i> <i>ssp. leiophylla</i>		S2		
<i>Carex sartwellii</i>	Sartwell's Sedge	S1		
<i>Carex siccata</i>		S1		
<i>Carex spectabilis</i>	A Sedge	S1		
<i>Carex stylosa</i>	Long-styled Sedge	S2		
<i>Carex</i> <i>subspathacea</i>		S2	S3S4	widespread and locally common along the coast
<i>Carex</i> <i>sychnocephala</i>	Many-headed Sedge	S2		
<i>Carex ursina</i>	Bear Sedge	S2	S3	widespread along the coast
<i>Carex viridula</i>	Little Green Sedge	S3		
<i>Carex viridula</i> <i>ssp.</i> <i>viridula</i>	Green Sedge	S3		
<i>Carex williamsii</i>	A Sedge	S2S3	S3	
<i>Carex xerantica</i>	Dry-land Sedge	S1		
<i>Cassiope</i> <i>mertensiana</i>	White Mountain Heather	S1		
<i>Castilleja miniata</i>	Greater Red Indian-paintbrush	S1S2	S2	most sites remote with few threats, large local populations
<i>Castilleja parviflora</i>	Small-flowered Indian-paintbrush	S2		
<i>Castilleja parviflora</i> <i>var. parviflora</i>		S2		
<i>Castilleja yukonis</i>	Yukon Indian-paintbrush	S3		
<i>Ceratophyllum</i> <i>demersum</i>	Common Hornwort	S2	S2S3	
<i>Chenopodium</i> <i>glaucum</i>	Oakleaf Goosefoot	S1		
<i>Chenopodium</i> <i>leptophyllum</i>	Narrowleaf Goosefoot	S1		
<i>Chenopodium</i> <i>rubrum</i>	Red Goosefoot	S3		
<i>Chenopodium</i> <i>salinum</i>		S1		
<i>Chenopodium</i> <i>simplex</i>	Giant-seed Goosefoot	S1		
<i>Chimaphila</i> <i>umbellata</i>		s1		
<i>Chimaphila</i> <i>umbellata</i> <i>ssp.</i> <i>occidentalis</i>		S1		
<i>Chrysanthemum</i> <i>arcticum</i>	Arctic Daisy	S1S3	S3	more widespread than previously thought along the coast

Scientific Name	Common Name	S Rank	New S Rank	NOTES
<i>Chrysanthemum arcticum</i> ssp. <i>polare</i>	Arctic Daisy	S1S3	S3	more widespread than previously thought along the coast
<i>Cicuta bulbifera</i>	Bulb-bearing Water-hemlock	S2		
<i>Cicuta maculata</i>	Spotted Water-hemlock	S2S3		
<i>Cicuta maculata</i> var. <i>angustifolia</i>	Spotted Water-hemlock	S2	S2S3	
<i>Cicuta virosa</i>	European Water-hemlock	S3		
<i>Cinna latifolia</i>	Slender Wood Reedgrass	S2S3		
<i>Circaea alpina</i> ssp. <i>alpina</i>	Small Enchanter's Nightshade	S2	S2S3	
<i>Cirsium foliosum</i>	Leafy Thistle	S2		
<i>Claytonia megarhiza</i>		S1		
<i>Claytonia ogilviensis</i>	Ogilvie Mountains Spring Beauty	S1		
<i>Claytonia scammaniana</i>	Scamman's Springbeauty	S3		
<i>Coeloglossum viride</i>	Bracted Green Orchid	S2	S2S3	
<i>Coeloglossum viride</i> ssp. <i>bracteatum</i>	Bracted Green Orchid	S2	S2S3	
<i>Collinsia parviflora</i>	Small-flower Blue-eyed Mary	S2		
<i>Colpodium vahlianum</i>	Vahl's Alkali Grass	S1		
<i>Comandra umbellata</i>	Umbellate Bastard Toad-flax	S1S2		
<i>Comandra umbellata</i> ssp. <i>pallida</i>	Pale Comandra	S1	S1S2	
<i>Corispermum ochotense</i>	Russian Bugseed	S2		
<i>Corispermum ochotense</i> var. <i>alaskanum</i>	Russian Bugseed	S2		
<i>Crassula aquatica</i>	Pigmyweed	S1		
<i>Cryptogramma crispa</i> var. <i>acrostichoides</i>	Mountain Parsley	S2S3		
<i>Cryptogramma crispa</i> var. <i>sitchensis</i>	Sitka Parsley Fern	S2		
<i>Cryptogramma stelleri</i>	Fragile Rockbrake	S2		
<i>Cynoglossum virginianum</i> var. <i>boreale</i>	Northern Wild Comfrey	S1		
<i>Cypripedium guttatum</i>	Spotted Lady's-slipper	S2		



Scientific Name	Common Name	S Rank	New S Rank	NOTES
<i>Cypripedium parviflorum</i>	Small Yellow Lady's-slipper	S1		
<i>Danthonia spicata</i>	Poverty Oat-grass	S1		
<i>Delphinium brachycentrum</i>	Northern Larkspur	S1		
<i>Descurainia incisa</i> var. <i>incisa</i>		S2		
<i>Descurainia pinnata</i>	Pinnate Tansy-mustard	S1S2		
<i>Descurainia pinnata</i> ssp. <i>nelsonii</i>		S1S2		
<i>Dianthus repens</i>	Carnation	S2		
<i>Diapensia lapponica</i>	Lapland Diapensia	S3		
<i>Diapensia lapponica</i> ssp. <i>obovata</i>	Diapensia	S3		
<i>Dodecatheon pulchellum</i>	Few-flower Shooting-star	S2		
<i>Dodecatheon pulchellum</i> ssp. <i>pulchellum</i>		S2		
<i>Douglasia alaskana</i>	Alaska Rockjasmine	S1		
<i>Douglasia arctica</i>	Mackenzie River Douglasia	S3	S3S4	
<i>Draba albertina</i>	Slender Whitlow-grass	S3		
<i>Draba corymbosa</i>	Flat-top Whitlow-grass	S3		
<i>Draba kananaskis</i>	Longstalk Whitlow-grass	S1		
<i>Draba kluanei</i>	Kluane Park Whitlow-grass	S1		
<i>Draba lonchocarpa</i> var. <i>vestita</i>		S1		
<i>Draba macounii</i>	Macoun's Whitlow-grass	S3		
<i>Draba murrayi</i>	Murray's Whitlow-grass	S1		
<i>Draba nemorosa</i>	Wood Whitlow-grass	S2S3		
<i>Draba nemorosa</i> var. <i>leiocarpa</i>	Wood Whitlow-grass	S2S3		
<i>Draba ogilviensis</i>	Ogilvie Range Whitlow-grass	S3		
<i>Draba porsildii</i>	Porsild's Whitlow-grass	S2		
<i>Draba ruaxes</i>	Rainier Whitlow-grass	S2		
<i>Draba scotteri</i>	Scotter's Whitlow-grass	S2S3		
<i>Draba stenoloba</i>	Alaska Whitlow-grass	S3		
<i>Draba stenopetala</i>	Star-flowered Draba	S2		
<i>Draba ventosa</i>	Wind River Whitlow-grass	S1		
<i>Draba yukonensis</i>	Yukon Whitlow-grass	S1		
<i>Drosera anglica</i>	English Sundew	S2S3	S3	
<i>Dryopteris carthusiana</i>	Spinulose Shield Fern	S2		
<i>Dryopteris expansa</i>	Spreading Woodfern	S2S3		
<i>Eleocharis uniglumis</i>	Creeping Spike-rush	S2		
<i>Epilobium arcticum</i>		S2	S1S2	
<i>Epilobium clavatum</i>	Clavate-fruit Willow-herb	S1		
<i>Epilobium</i>	Dahuria Willow-herb	S2	S2S3	

Scientific Name	Common Name	S Rank	New S Rank	NOTES
<i>davuricum</i>				
<i>Erigeron compositus</i> var. <i>discoideus</i>		S1		
<i>Erigeron glabellus</i>	Smooth Fleabane	S3		
<i>Erigeron glabellus</i> var. <i>pubescens</i>		S3		
<i>Erigeron grandiflorus</i>	Large-flower Fleabane	S2S3		
<i>Erigeron grandiflorus</i> ssp. <i>arcticus</i>		S2S3		
<i>Erigeron hyperboreus</i>	Boreal Fleabane	S1		
<i>Erigeron hyssopifolius</i>	Daisy Fleabane	S3		
<i>Erigeron mexiae</i>		S1	synonym	synonym of <i>E. pallens</i> ( <i>E. denali</i> )
<i>Erigeron muirii</i>	Muir's Fleabane	S1		
<i>Erigeron ochroleucus</i>		S1		
<i>Erigeron pallens</i>		S3		
<i>Erigeron peregrinus</i> ssp. <i>callianthemus</i>		S1		
<i>Erigeron peregrinus</i> ssp. <i>peregrinus</i>		S2		
<i>Erigeron philadelphicus</i>	Philadelphia Fleabane	S2		
<i>Erigeron philadelphicus</i> var. <i>philadelphicus</i>	Philadelphia fleabane	S2		
<i>Erigeron yukonensis</i>	Yukon Fleabane	S2		
<i>Eriogonum flavum</i>	Umbrella Plant	S1	S1S2	
<i>Eriogonum flavum</i> var. <i>aquilinum</i>	Umbrella Plant	S1	S1S2	
<i>Eriophorum gracile</i>	Slender Cotton-grass	S1S2	S2S3	Rhonda has made many recent collections
<i>Eriophorum gracile</i> var. <i>gracile</i>	Slender Cotton-grass	S1S2	S2S3	
<i>Eriophorum vaginatum</i> ssp. <i>spissum</i>		S1S3		
<i>Eriophorum viridicarinatum</i>	Green Keeled Cottongrass	S2		
<i>Eritrichium chamissonis</i>	Arctic-alpine Forget-me-not	S1		
<i>Eritrichium splendens</i>	Showy Forget-me-not	S2		

Scientific Name	Common Name	S Rank	New S Rank	NOTES
<i>Erysimum angustatum</i>	Dawson Wallflower	S2		
<i>Erysimum inconspicuum</i>	Small-flower Prairie Wallflower	S1		
<i>Festuca brevissima</i>		S2S3		
<i>Festuca hyperborea</i>	Boreal Fescue	S1		
<i>Festuca lenensis</i>		S1	S3	
<i>Festuca minutiflora</i>		S1S2		
<i>Festuca saximontana</i> var. <i>purpusiana</i>		S2		
<i>Fritillaria camschatcensis</i>	Indian Rice	S1		
<i>Galium triflorum</i>	Sweet-scent Bedstraw	S3		
<i>Gentianella tenella</i> ssp. <i>tenella</i>	Slender Gentian	S2		
<i>Gentianopsis detonsa</i>	Sheared Gentian	S3		
<i>Gentianopsis detonsa</i> ssp. <i>yukonensis</i>		S3		
<i>Geranium richardsonii</i>	Richardson Geranium	S2		
<i>Geum triflorum</i>	Prairie-smoke	S1		
<i>Glaux maritima</i> ssp. <i>maritima</i>		S2		
<i>Glyceria borealis</i>	Small Floating Manna-grass	S2	S2S3	
<i>Glyceria striata</i> var. <i>stricta</i>	Fowl Manna-grass	S2S3		
<i>Gymnocarpium jessoense</i>	Northern Oak Fern	S2S3		
<i>Gymnocarpium jessoense</i> ssp. <i>parvulum</i>	Nahanni Oak Fern	S2S3		
<i>Halimolobos mollis</i>	Soft Rockcress	S3		
<i>Harrimanella stelleriana</i>	Starry Bell-heather	S2		
<i>Helictotrichon hookeri</i>	Spike-oat	S2		
<i>Hieracium albiflorum</i>	White-flowered Hawkweed	S1		
<i>Hierochloa pauciflora</i>	Few-leaved Sweet-grass	S1	S3	more common than previously thought
<i>Hippuris montana</i>	Mountain Mare's-tail	S1	SNR	there are some doubts about the identification of this single collection
<i>Hippuris tetraphylla</i>	Fourleaf Mare's-tail	S1	S3S4	More common than previously

Scientific Name	Common Name	S Rank	New S Rank	NOTES
				thought
<i>Hordeum brachyantherum</i>	Meadow Barley	S2		
<i>Iris setosa</i> var. <i>interior</i>		S1		
<i>Isoetes echinospora</i>	Spiny-spored Quillwort	S1		
<i>Isoetes maritima</i>		S1		
<i>Juncus nodosus</i>	Knotted Rush	S2S3		
<i>Juncus stygius</i>	Moor Rush	S2		
<i>Juncus stygius</i> ssp. <i>americanus</i>	Moor Rush	S2		
<i>Juncus triglumis</i>	Three-flower Rush	S1S2		
<i>Koeleria asiatica</i>	Oriental Junegrass	S2		
<i>Koeleria macrantha</i>	Prairie Junegrass	S2		
<i>Koenigia islandica</i>	Island Koenigia	S2	S2S3	
<i>Krascheninnikovia lanata</i>	Winter-fat	S1		
<i>Lactuca biennis</i>	Tall Blue Lettuce	S1		
<i>Lathyrus japonicus</i>	Beach Pea	S1	S2S3	more common than previously thought
<i>Lathyrus ochroleucus</i>		S2		
<i>Lesquerella calderi</i>	Calder's Bladder-pod	S3		
<i>Lewisia pygmaea</i>	Alpine Bitterroot	S1		
<i>Limosella aquatica</i>	Northern Mudwort	S2S3		
<i>Linnaea borealis</i> ssp. <i>borealis</i>		S1	S1S3	
<i>Lomatogonium rotatum</i>	Marsh Felwort	S1	S4	widespread
<i>Lupinus kuschei</i>	Yukon Lupine	S3	S3S4	
<i>Lupinus nootkatensis</i>	Nootka Lupine	S1S2		
<i>Luzula groenlandica</i>	Greenland Wood-rush	S1		
<i>Luzula wahlenbergii</i>		S2	S3	
<i>Lycopodium dendroideum</i>	Treelike Clubmoss	S1		
<i>Lycopodium sitchense</i>	Sitka Club-moss	S1		
<i>Lysimachia thysiflora</i>	Water Loosestrife	S2		
<i>Malaxis paludosa</i>	Bog Adder's-mouth	S1	S1S2	new populations discovered
<i>Matricaria ambigua</i>	Sea-shore Chamomile	S1S2		
<i>Mertensia maritima</i>	Sea Bluebells	S2?	S2	
<i>Mertensia paniculata</i> var. <i>alaskana</i>		S2		
<i>Minuartia rossii</i>	Ross' Stitchwort	S2		
<i>Mitella pentandra</i>	Five-point Bishop's-cap	S2		

Scientific Name	Common Name	S Rank	New S Rank	NOTES
<i>Montia bostockii</i>	Bostock's Miner's-lettuce	S2S3	S3	
				more common than previously thought
<i>Montia fontana</i>	Fountain Miner's-lettuce	S1	S2S3	
<i>Muhlenbergia glomerata</i>	Marsh Muhly	S1		
<i>Muhlenbergia richardsonis</i>	Mat Muhly	S2		
<i>Najas flexilis</i>	Wavy Waternymph	S1		
				more widespread than previously thought - new populations found in SE Yukon
<i>Oplopanax horridus</i>	Devil's-club	S1S2	S2	
<i>Orthocarpus luteus</i>	Yellow Owl's-clover	S1		
				more common than previously thought
<i>Oryzopsis asperifolia</i>	White-grained Mountain-ricegrass	S1	S2S3	
<i>Oxytropis arctica</i> var. <i>arctica</i>		S1		
<i>Oxytropis arctica</i> var. <i>murrayi</i>		S1		
<i>Oxytropis campestris</i> ssp. <i>roaldii</i>		S3	S2S3	
<i>Oxytropis huddelsonii</i>	Huddelson's Crazy-weed	S3		
<i>Oxytropis mertensiana</i>	Mertens' Crazy-weed	S1		
<i>Oxytropis nigrescens</i> ssp. <i>lonchopoda</i>		S1	S1S3	taxonomic and distributional uncertainty exists
<i>Papaver alboroseum</i>	Pale Poppy	S1		
<i>Papaver gorodkovii</i>		S1		
<i>Papaver mccconnellii</i>	Mccconnell's Poppy	S3	S3S4	
<i>Papaver nudicaule</i> ssp. <i>americanum</i>		S2		
<i>Papaver radicum</i> ssp. <i>radicum</i>		S1		
<i>Papaver walpolei</i>	Walpole Poppy	S2		
<i>Parietaria pennsylvanica</i>	Pennsylvania Pellitory	S1		
<i>Pedicularis groenlandica</i>	Bull Elephant's-head	S2		
<i>Pedicularis macrodonta</i>	Muskeg Lousewort	S2		
<i>Phacelia mollis</i>	Coffee Creek Scorpion-weed	S2S3		
<i>Phalaris arundinacea</i>	Reed Canary Grass	S2		

Scientific Name	Common Name	S Rank	New S Rank	NOTES
<i>Phalaris arundinacea</i>	Reed Canary Grass	S2		
<i>Phegopteris connectilis</i>	Northern Beech Fern	S1		
<i>Phippisia algida</i>	Ice Grass	S2	S2S3	
<i>Phlox richardsonii</i>	Richardson's Phlox	S3		
<i>Phyllodoce glanduliflora</i>	Yellow Mountain-heath	S2S3		
<i>Pinguicula macroceras</i>	California Butterwort	s1		
<i>Pinguicula macroceras</i> var. <i>macroceras</i>	Horned Butterwort	s1		
<i>Plantago maritima</i>	Seaside Plantain	S1		
<i>Platanthera dilatata</i>	Leafy White Orchid	S3		
<i>Platanthera orbiculata</i>	Large Roundleaf Orchid	S2S3		
<i>Platanthera stricta</i>	Slender Bog Orchid	S1		
<i>Poa abbreviata</i> ssp. <i>abbreviata</i>		S1		
<i>Poa abbreviata</i> ssp. <i>pattersonii</i>	Patterson Bluegrass	S1		
<i>Poa arctica</i> ssp. <i>williamsii</i>		S1		
<i>Poa cusickii</i>	Cusick's Bluegrass	S2		
<i>Poa interior</i>	Inland Bluegrass	S2		
<i>Poa porsildii</i>		S3		
<i>Poa pseudoabbreviata</i>	Polar Bluegrass	S1		
<i>Podistera macounii</i>	Macoun's Podistera	S2S3		
<i>Podistera yukonensis</i>	Yukon Podistera	S1		
<i>Polygonum caurianum</i> ssp. <i>caurianum</i>		S1	S2	2 records occur for this species I think the ssp. record can be deleted as no other ssp. known
<i>Polygonum lapathifolium</i>	Dock-leaf Smartweed	S2		
<i>Polygonum lapathifolium</i> var. <i>lapathifolium</i>	Hedge Cornbind	S2		
<i>Polygonum pensylvanicum</i> ssp. <i>oneillii</i>		S1S2		
<i>Polypodium sibiricum</i>		S1		
<i>Polystichum lonchitis</i>	Northern Holly-fern	S1		
<i>Potamogeton</i>	Leafy Pondweed	S2		

Scientific Name	Common Name	S Rank	New S Rank	NOTES
<i>foliosus</i>				
<i>Potamogeton obtusifolius</i>	Blunt-leaf Pondweed	S1		
<i>Potamogeton strictifolius</i>	Straight-leaf Pondweed	S1		
<i>Potamogeton subsibiricus</i>	Yenisei River Pondweed	S1		
<i>Potentilla bimundorum</i>	Divided Cinquefoil	S2S3	S3S4	
<i>Potentilla bipinnatifida</i>		S2		
<i>Potentilla egedii</i>	Egede Cinquefoil	S1S2	S3S4	widespread and locally common along the coast
<i>Potentilla gracilis</i>	Slender Cinquefoil	S2		
<i>Potentilla ovina</i>	Sheep Cinquefoil	S1?	SNR	specimens should be reviewed
<i>Potentilla pulchella</i>	Pretty Cinquefoil	S2		
<i>Potentilla rubricaulis</i>	Rocky Mountain Cinquefoil	S2		
<i>Primula borealis</i>		S2	S3	more common along the coast than previously thought
<i>Primula egalikensis</i>	Greenland Primrose	S2S3		
<i>Primula eximia</i>		S2S3		
<i>Primula mistassinica</i>	Bird's-eye Primrose	S2		
<i>Primula nutans</i>		S2S3	S3	
<i>Prunella vulgaris ssp. lanceolata</i>		S1		
<i>Puccinellia angustata</i>		S1		
<i>Puccinellia arctica</i>	Arctic Alkali Grass	S2S3		
<i>Puccinellia grandis</i>	Pacific Alkali Grass	S1		
<i>Puccinellia hauptiana</i>		S1		
<i>Puccinellia langeana</i>		S1	S2S3	widespread but not abundant along the coast
<i>Puccinellia phryganodes</i>	Creeping Alkali Grass	S2	S3S4	common throughout the coast
<i>Puccinellia vaginata</i>	Arctic Tussock Alkali Grass	S2	S3	
<i>Ranunculus occidentalis var. brevistylis</i>		S2	S3	locally common and the majority of populations occur in Kluane National Park
<i>Ranunculus pallasii</i>	Pallas Buttercup	S3		
<i>Ranunculus turneri</i>	Turner's Butter-cup	S2S3		

Scientific Name	Common Name	S Rank	New S Rank	NOTES
<i>Ribes laxiflorum</i>	Trailing Black Currant	S1		
<i>Rorippa barbareifolia</i>	Hoary Yellow-cress	S3		
<i>Rosa woodsii</i>	Woods Rose	S2		
<i>Rubus arcticus ssp. stellatus</i>	Beringian Nagoonberry	S2	S1S2	not enough known populations to be considered S2
<i>Rubus pedatus</i>	Five-leaf Dwarf Bramble	S1		
<i>Rumex acetosa</i>	Green Sorrel	S1		
<i>Rumex acetosa ssp. alpestris</i>	Green Sorrel	S1		
<i>Rumex beringensis</i>	Bering Sea Dock	S1	S1S2	local populations large and within a protected area
<i>Rumex maritimus</i>	Sea-side Dock	S3		
<i>Ruppia spiralis</i>	Ditch-grass	S1		
<i>Sagina nivalis</i>	Snow Pearlwort	S1	S3S4	more common than previously thought, primarily along the coast and AsiKeyi
<i>Sagina saginoides</i>	Arctic Pearlwort	S2S3		
<i>Sagittaria cuneata</i>	Wapatum Arrowhead	S2		
<i>Salix arctophila</i>	Northern Willow	S2		
<i>Salix brachycarpa ssp. brachycarpa</i>		S2		
<i>Salix candida</i>	Hoary Willow	S2		
<i>Salix chamissonis</i>	A Willow	S3	S3S4	
<i>Salix farriæ</i>	Farr's Willow	s2s3		
<i>Salix lucida ssp. caudata</i>		S1S3		
<i>Salix maccalliana</i>	Mccall's Willow	S1		
<i>Salix ovalifolia</i>	Oval-leaf Willow	S3		
<i>Salix pedicellaris</i>	Bog Willow	S1S3		
<i>Salix prolixa</i>	Mackenzie Willow	S1		
<i>Salix pyrifolia</i>	Balsam Willow	S2		
<i>Salix raupii</i>	Raup's willow	S1		
<i>Salix rotundifolia ssp. rotundifolia</i>		S2	S2S3	less at risk as most of the populations are within Ivvavik National Park
<i>Salix setchelliana</i>	A Willow	S3		
<i>Sambucus racemosa</i>	Red Elderberry	S1		
<i>Sambucus racemosa ssp. pubens</i>	Red Elderberry	S1		
<i>Saussurea americana</i>	American Saw-wort	S1		
<i>Saxifraga</i>		S2	S1	



Scientific Name	Common Name	S Rank	New S Rank	NOTES
<i>bronchialis</i> ssp. <i>codyanus</i>				
<i>Saxifraga</i> <i>eschscholtzii</i>	Cushion Saxifrage	S2		
<i>Saxifraga foliolosa</i>	Leafy Saxifrage	S2S3		
<i>Saxifraga</i> <i>nelsoniana</i> ssp. <i>pacifica</i>		S2		
<i>Saxifraga spicata</i>	Spiked Saxifrage	S1	SH	not seen since 1920. Habitat potentially disturbed or destroyed by mining.
<i>Scheuchzeria</i> <i>palustris</i> ssp. <i>americana</i>	American Scheuchzeria	S2S3		
<i>Schizachne</i> <i>purpurascens</i>	Purple Oat	S2S3		
<i>Schoenoplectus</i> <i>acutus</i>	Hard-stem Bulrush	S3	duplicate	
<i>Scirpus acutus</i>	Hard-stem Bulrush	S3		
<i>Scirpus</i> <i>hudsonianus</i>	Hudson Bay Clubrush	S2S3		
<i>Scirpus</i> <i>microcarpus</i>	Small-fruit Bulrush	S2S3		
<i>Scirpus rollandii</i>	Rolland Bulrush	S2		
<i>Scirpus rufus</i>	Red Bulrush	S1		
<i>Scirpus validus</i>	Soft-stem Bulrush	S1S2	S2	
<i>Scolochloa</i> <i>festucacea</i>	Sprangle-top	S1		
<i>Scutellaria</i> <i>galericulata</i> var. <i>pubescens</i>	Narrow-leaved Skullcap	S2S3		
<i>Senecio</i> <i>hyperborealis</i>	Boreal Groundsel	S2S3		
<i>Senecio</i> <i>sheldonensis</i>	Mount Sheldon Groundsel	S2		
<i>Silene involucrata</i> ssp. <i>tenella</i>	Peel River Catchfly	S3		
<i>Silene menziesii</i>	Menzies Pink	S3		
<i>Silene uralensis</i> ssp. <i>ogilviensis</i>	Ogilvie Mountains Nodding Campion	S2		
<i>Silene williamsii</i>	Williams' Champion	S1S2		
<i>Sisyrinchium</i> <i>montanum</i>	Strict Blue-eyed-grass	S2		
<i>Sium suave</i>	Hemlock Water-parsnip	S2		
<i>Solidago</i> <i>canadensis</i>	Canada Goldenrod	S3		
<i>Solidago</i> <i>canadensis</i> var.		S3		

Scientific Name	Common Name	S Rank	New S Rank	NOTES
<i>salebrosa</i>				
<i>Sorbus sitchensis</i>	Sitka Mountain-ash	S1	S2	locally common
<i>Sphenopholis intermedia</i>		S1		
<i>Stellaria alaskana</i>	Alaska Starwort	S1		
<i>Stellaria dicranoides</i>	Matted Starwort	S1		
<i>Stellaria humifusa</i>	Creeping Sandwort	S2	S3S4	common throughout the coast
<i>Stellaria umbellata</i>	Umbellate Stitchwort	S1S2	S2	
<i>Stenotus macleanii</i>	Northern Mock Golden-weed	S2		
<i>Stipa nelsonii</i> ssp. <i>dorei</i>	Columbia Needlegrass	S2		
<i>Stipa richardsonii</i>	Canada Mountain Ricegrass	S2		
<i>Suaeda calceoliformis</i>	American Sea-blite	S2S3		
<i>Subularia aquatica</i> var. <i>americana</i>	Water Axlwort	S2S3		
<i>Swertia perennis</i>		S1		
<i>Synthyris borealis</i>	Alaska Kitten-tail	s2s3	S3	
<i>Tanacetum bipinnatum</i> ssp. <i>bipinnatum</i>		S1	SNR	taxonomic uncertainty
<i>Taraxacum carneocoloratum</i>	Flesh-coloured Dandelion	S1		
<i>Taraxacum integratum</i>		S1	?	check these
<i>Taraxacum maurolepium</i>		S1	?	check these
<i>Thalictrum venulosum</i>	Veined Meadowrue	S1		
<i>Thellungiella salsuginea</i>	Saltwater Cress	S2		
<i>Thlaspi arcticum</i>	Arctic Pennycress	S1S2		
<i>Tofieldia glutinosa</i>	Sticky False-asphodel	S2S3		
<i>Tofieldia glutinosa</i> ssp. <i>glutinosa</i>	Sticky False Asphodel	S2S3		
<i>Torreyochloa pauciflora</i>	Weak False Manna	S1		
<i>Townsendia hookeri</i>	Hooker Townsend	s2s3		
<i>Toxicodendron rydbergii</i>	Poison Ivy	S1		
<i>Trientalis borealis</i> ssp. <i>latifolia</i>	Northern Starflower	S2S3		
<i>Trisetum sibiricum</i>	Siberian False-oats	S1	SH	not seen since 1940. Not seen in recent surveys
<i>Trisetum sibiricum</i> ssp. <i>litorale</i>	Siberian False-oats	S1	SH	

Scientific Name	Common Name	S Rank	New S Rank	NOTES
<i>Trisetum sibiricum</i> <i>ssp. sibiricum</i>		S1	SH	
<i>Typha latifolia</i>	Broad-leaf Cattail	S2		
<i>Utricularia minor</i>	Lesser Bladderwort	S2S3		
<i>Vaccinium membranaceum</i>	Tall Blueberry	S2		
<i>Vaccinium ovalifolium</i>	Oval-leaf Huckleberry	S2S3		
<i>Vahlodea atropurpurea</i>	Mountain Hairgrass	S3		
<i>Veronica scutellata</i>	Marsh-speedwell	S3		
<i>Vicia americana</i>	American Purple Vetch	S2	S3	less at risk from ability to colonize areas
<i>Viola biflora</i>	Northern Violet	S1		
<i>Viola biflora ssp. biflora</i>		S1		
<i>Viola canadensis</i>	Canada Violet	S2S3		
<i>Viola canadensis ssp. rydbergii</i>	Canada Violet	S2S3		
<i>Viola langsdorfii</i>	Aleutian Violet	S2		
<i>Viola nephrophylla</i>	Northern Bog Violet	S1		
<i>Viola selkirkii</i>	Great-spurred Violet	S1		
<i>Woodsia ilvensis</i>	Rusty Woodsia	S1	S2	more widespread than previously thought - likely overlooked - none are known from a protected area
<i>Woodsia scopulina</i>	Rocky Mountain Woodsia	S1		
<i>Woodsia scopulina ssp. scopulina</i>	Rocky Mountain Woodsia	s1		
<i>Zannichellia palustris</i>	Horned Pondweed	S1		

\*Vascular Plant Species Ranked in the Yukon Territory by the General Status of Species in Canada (Wild Species, 2005).