



FRUITING TREES, SHRUBS AND VINES IN THE ORNAMENTAL LANDSCAPE



Plant your landscape and eat it too!



Fruiting plants in your ornamental landscape can be Functional
as A:

Shade or Patio Tree



*Fruiting plants in your ornamental landscape can be Functional
as A:*

Hedge, Shrub or Screen



*Fruiting plants in your ornamental landscape can be Functional
as A:*

Vine or Espalier



*Fruiting plants in your ornamental landscape can be Functional
as A:*

Bedding Plant or Groundcover



Beautiful

Foliage



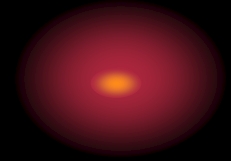
Beautiful

Flowers



Beautiful

Fruit



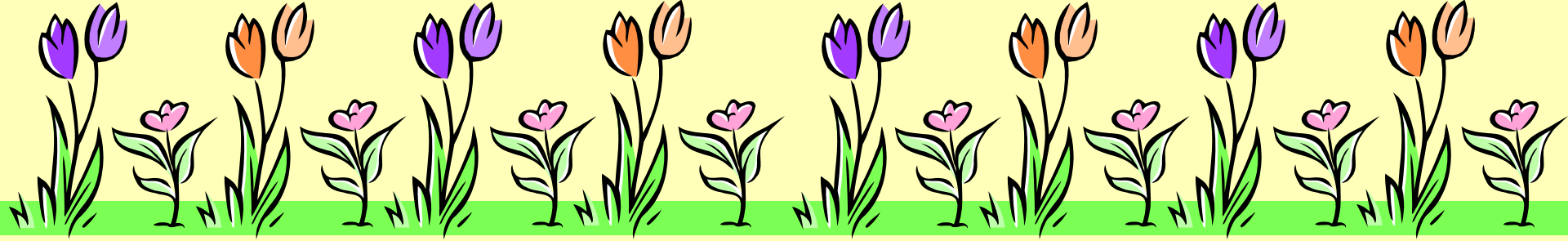
Delicious



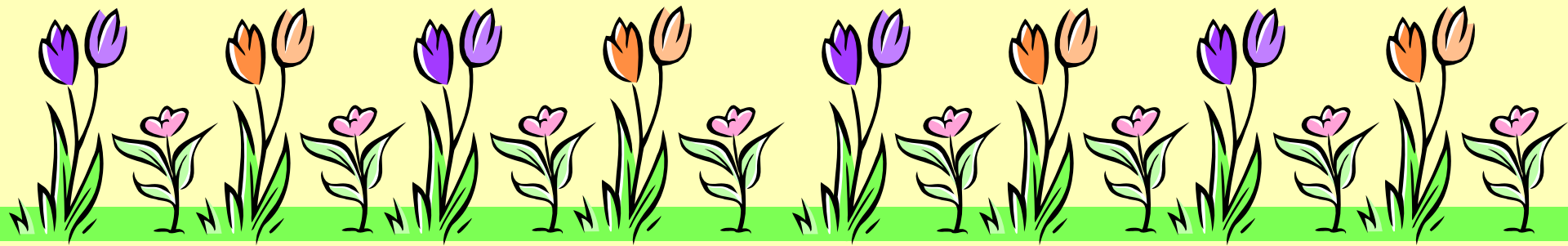


Function, Beauty and Fruit ...

You can have it all!



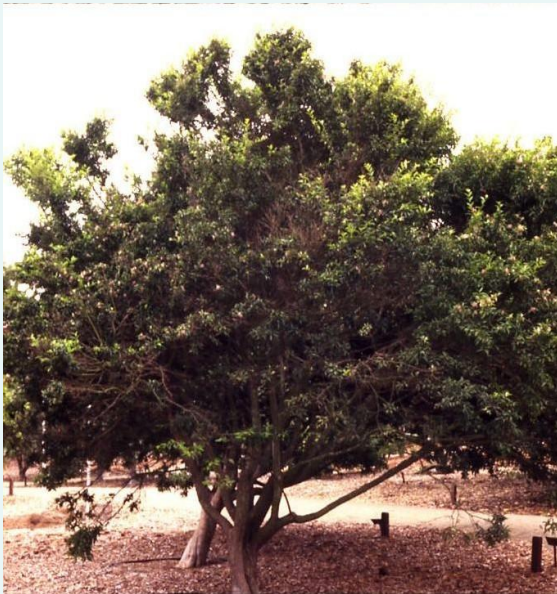
MEET THE PLANTS...



ACEROLA

Malpighia glabra

- A small tree, screen, hedge or espalier.
- Cold hardy to 26 degrees.



ACEROLA

Malpighia glabra

- Produces 3-5 crops of fruit in summer.
- 1" fruit up to 40 times higher in vitamin C than an orange.



APPLE

Malus pumila

- Many varieties – select low chill varieties.



- Available as standard, semi-dwarf or dwarf trees.



- Some varieties are only semi-deciduous and may bear up to 3 crops per year.



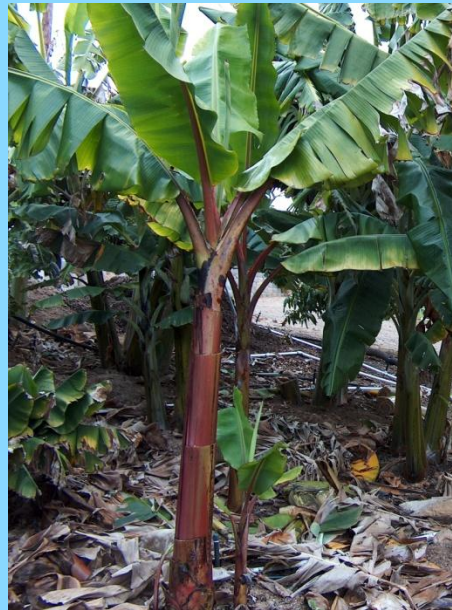
- Use as a shade tree, patio tree or espalier.



BANANA

Musa acuminata & hybrids

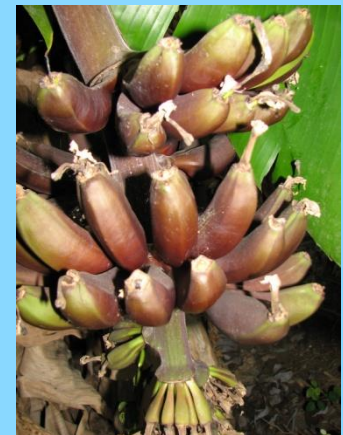
- Dwarf, semi-dwarf and standard sized trees.
- Over 80 varieties available.
- Plants form clumps. Useful as screens or specimen plants.



BANANA

Musa acuminata & hybrids

- Fruit can be green, yellow, blue, red or variegated in color. Fruit ranges in size from four to twenty four inches long.
- Each pseudostem fruits only once.



BLUEBERRIES

Vaccinium ashei & *Vaccinium corybosum*

- Many varieties of Southern Highbush and Rabbiteye blueberries perform well in low-chill areas.
- Acid-loving, prefer a soil pH of 5 to 5.5.
- Grow in partial shade or full sun.
- Plant in containers, raised beds or on mounds for best performance.



CARAMBOLA (STAR FRUIT)

Averrhoa carambola

- Small trees to 20 feet.
- Protect from strong winds.



CHERIMOYA

Annona cherimola

- **Fast growing deciduous tree to 25 feet.**
- **Briefly dormant in March or April.**
- **Hand pollinate flowers to insure fruit production.**
- **Considered by many to be one of the worlds best-tasting fruit.**



CITRUS

Citrus species & relatives

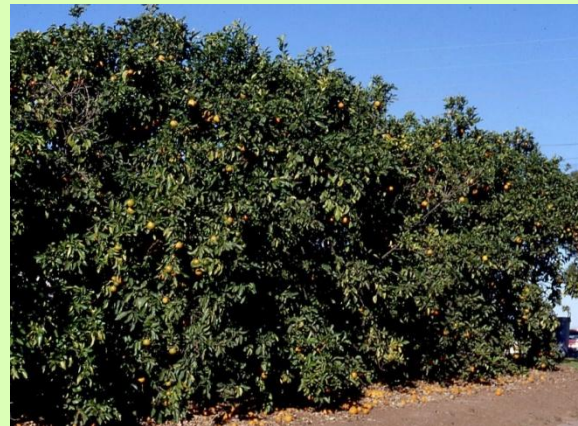
- Over 80 varieties available.



CITRUS

Citrus species & relatives

- Tree size can be standard (18'-25'), dwarf (8'-15') or true dwarf (5'-8').
- Trees can be useful as shade trees, screens, shrubs, hedges, patio trees or espaliers.



CITRUS

Citrus species & relatives

Ornamental features include:

- **fragrant flowers**



- **variegated and non-variegated foliage**



- **leaves of varied size and texture**



- **colorful fruit**



COFFEE

Coffea arabica

- Shrub or small tree to 15 feet.
- Plant in full sun or partial shade.
- Flowers are fragrant.
- Bears 3 or more crops per year.
- Berries are sweet, pleasant in flavor and high in caffeine.
- Beans are dried, roasted and ground to make the beverage coffee.



DRAGON EGG (PITAYA)

Cereus peruvianus

- A branching, columnar cactus with moderate growth rate. Height to 10 feet.
- The variety 'monstrosus' is smaller, bluish in color with ribs irregularly broken up into knobs and crests.
- Spectacular 5"- 6" white flowers open at night in late spring or summer.
- Fruit is sweet, pleasant and mild in flavor but somewhat grainy in texture.



DRAGON FRUIT

Hylocereus undatus, *H. Polyrhizus*, and other species and hybrids of *Hylocereus*

- A moderately fast growing climbing cactus from the subtropical regions of Mexico and South America.
- Spectacular 8” wide, white, night blooming flowers are produced in waves during the summer.



DRAGON FRUIT

Hylocereus undatus, *H. Polyrhizus*, and other species and hybrids of *Hylocereus*

- Beautiful hot pink fruit ripens 1 month after flowering.
- Some varieties are self-fruitful while others require cross-pollination.
- Fruit has white, pink or red colored flesh, a smooth texture, and a sweet and pleasant, mild flavor.



YELLOW DRAGON FRUIT

(*Selenicereus megalanthus*)



- Fruit is smaller but sweeter than other Pitaya.
- Plants are self-fruitful.

JABOTICABA

Myrciaria cauliflora



- Small tree or shrub to 15 feet.
- Flowers and fruits three or more times per year.
- Flowers and fruit occur on trunk and main scaffold branches.
- Fruit is delicious and reminiscent of a thick-skinned grape.

JELLY PALM

Butia capitata

- Small palm with slow to medium growth rate to 20'.
- Moderately drought tolerant.



JELLY PALM

Butia capitata

- **Delicious fruit eaten fresh or used to make jelly.**



LOQUAT

Eriobotrya japonica

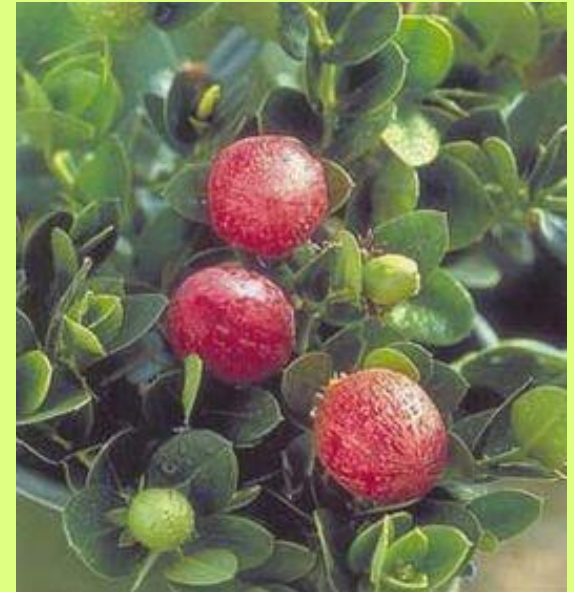
- A large evergreen shrub or small tree.
- Moderately drought tolerant.
- Some varieties require a pollinizer to produce fruit.
- Flesh color of fruit may be white or pale yellow.



NATAL PLUM

Carissa grandiflora

- Hardy, evergreen shrubs. Dwarf and standard sized cultivars are available.
- Plants have sharp spines.
- Fragrant flowers.
- Fruit is eaten fresh or used to make jams and jellies.



PINEAPPLE GUAVA (FEIJOA)

Acca sellowiana

- A shrub or small tree to 15 feet. Can be severely pruned.
- Drought tolerant. No significant pests or diseases.



PINEAPPLE GUAVA (FEIJOA)

Acca sellowiana

- Beautiful flowers have edible petals.
- Some varieties require pollinizer to set fruit.
- Superior varieties have been developed for fruit quality and fruit size.
- Fruit fall to the ground when ripe.

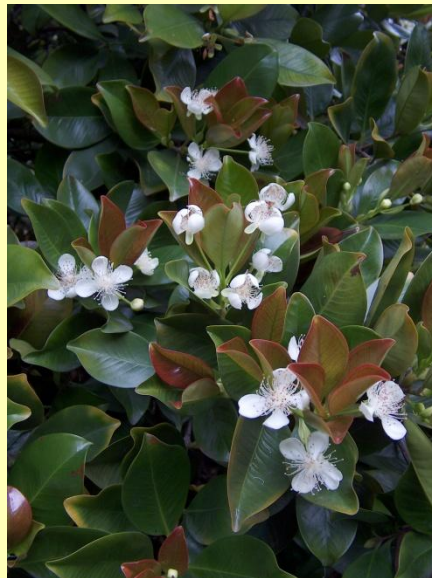


GRUMICHAMA

Eugenia brasiliensis



- Shrub or small tree to approximately 15 feet.
- New foliage is deep red.
- Abundant 1 inch white flowers occur in late spring.
- Dark purple-red 1 inch fruit is considered the best tasting of the cherry-like fruit. Fruit is also known as the Brazilian Cherry.



MACADAMIA

Macadamia integrifolia, *M. tetraphylla* and hybrids

- A drought tolerant tree to 35 feet.
- Leaves may be smooth or have sharp spines.
- Fragrant flowers are creamy light brown or pink in color.
- Nuts drop to the ground when ripe.



MALABAR CHESTNUT

Bombax glabra

- A semi-deciduous small tree to 15 feet. Plant in full sun or partial shade.
- Tree will develop an interesting swollen trunk.
- Plants are often sold as “Money Trees”. Can be grown as a bonsai.



MALABAR CHESTNUT

Bombax glabra

- Spectacular flowers occur Spring through Summer.
- Nut pods ripen in late Autumn.
- Nuts are similar to a chestnut .



MANGO

Mangifera indica

- **Evergreen.**
Large shrub
or tree to 30
feet.
- **New growth**
is beautiful
red in color.
Foliage
turns dark
green as it
matures.

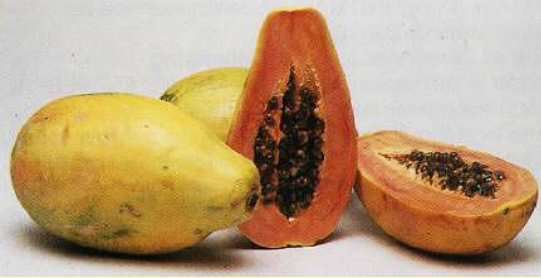


MANGO

Mangifera indica

- Yellow-brown flowers occur on pink spikes at the ends of branches.
- Many varieties are available. Select varieties with proven track records for your area.





PAPAYA

Carica papaya



- **Herbaceous trees, 6 to 20 feet in mature height.**



- **Trees may be dioecious or monoecious.**



- **Many varieties, with Mexican and Hawaiian types being the most common.**



BABACO PAPAYA

Carica pentagona

- A dwarf, cold hardy, self-fruitful papaya. Female plants are parthenocarpic and produce seedless fruit without pollinization.
- Fruit is very juicy and has the taste of a honeydew melon with lemon-lime.



PASSIONFRUIT

Passiflora species

- **Vigorous evergreen or deciduous vines.**
- **Many species and varieties produce edible fruit.**
- **Flowers are exotic and often spectacular!**
- **Vines are relatively short-lived, an average of 5 -7 years.**



PASSIONFRUIT

Passiflora species

- Fruit is often sweeter when the outer rind is shriveled.
- *Passiflora edulis* X *flavocarpa* 'Frederick' is considered the best fruiting variety for Southern California.



PINEAPPLE

Ananas comosus

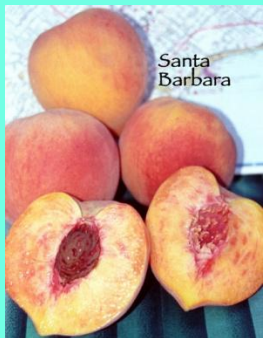
- A terrestrial bromeliad, each plant produces only one fruit and then dies.
- Offshoots or “pups” are produced by the mother plant to produce a spreading clump of pineapple plants.
- Many varieties and cultivars.



PEACH & NECTARINE

Prunus persica & *P. persica nucipersica*

- Many varieties and cultivars are available. Select varieties with low chilling requirements.
- Early, mid and late season ripening varieties. Flowers are in various shades of pink and may be single or double blossoms.



PLUM

Prunus domestica



- Many varieties and cultivars are available. Select varieties with low chilling requirements.

- Early, mid and late season ripening varieties.

- Flowers are white or rarely pink.



- Favorite ornamental / fruiting varieties include 'Weeping Santa Rosa plum' and 'Hollywood' and 'Elsie' purple leafed plums.



POMEGRANATE

Punica granatum

- A single or multi-trunked shrub or small tree to 15 feet.
- New foliage is red, fading to green as it matures.
- Single or double flowers may be red, salmon or pink.
- Fruit may be red, pink or yellowish.
- Many varieties, some with sweeter fruit and softer seeds than the traditional variety 'Wonderful'.



ROSE APPLE

Syzygium jambos

- A large shrub or small tree with a semi-weeping growth habit, Easily trained as an espalier or pruned as an informal hedge or screen.
- New growth is a beautiful wine red.
- Creamy white flowers are quite showy.
- Pale green or yellowish fruit tastes like roses smell.



STRAWBERRY GUAVA

Psidium cattleianum & *P. cattleianum lucidum*

- Hardy evergreen shrub or small tree with new foliage copper-red in color.
- Tolerant of heavy pruning and shaping.
- Fruit can be red or yellow.



SURINAM CHERRY

Eugenia uniflora

- Evergreen shrub or small tree. Tolerant of heavy pruning.
- Fruit are highly ornamental, very fragile and may be orange-red or dark purple-black in color when ripe.
- Plants often bear several crops of fruit per year.



TROPICAL GUAVA

Psidium guajava

- **Trees or large shrubs to 25 feet in height.**
- **New foliage is bronzed and foliage becomes reddish in winter.**
- **Many varieties and cultivars. Most have white flowers.**



TROPICAL GUAVA

Psidium guajava

- **Crunchy types of tropical guava have fruit that are eaten crisp like an apple and have no order. Flesh color is white.**
- **Dessert types have fruit that is eaten soft and creamy and the fruit has a strong fragrance. Fruit can have white, pink or red flesh.**
- **Varieties of 'Thai Maroon' dessert guavas have heavy red pigment in the foliage, pink flowers and fruit with bronzed skin and red flesh.**



Wax Jambu

Syzygium javanicum



- Large shrub or small tree with beautiful new growth which fades to dark green as it matures.
- Frost sensitive. Should be protected from temperatures below 32 degrees.
- Flowers are yellowish-white and very showy.
- Fruit somewhat apple-shaped with mild, watery flavor and crisp texture. Fruit often has a white, pink or red skin color.



FRUITING TREES, SHRUBS AND VINES IN THE ORNAMENTAL LANDSCAPE

FANTASIA **Specializing in Edibles**
for over 30 years



- * Fruit Tree Pruning
- * Landscape and Orchard Consultations
- * Home Orchard Management
- * Seminars, Lectures & Classes

GARDENS

Tom Del Hotal
(619) 454-2628
email: fantasiagardens@gmail.com

ISA Certified Arborist
CA State Qualified Pesticide Applicator
CA State Advanced Certified Nurseryman