

Yanda Dom names for Plants and Animals

edited by Jeffrey Heath and Steven Moran

This document was created from [Tsammalex](#) on 2015-05-13.

Tsammalex is published under a Creative Commons Attribution 4.0 International License and should be cited as

*Christfried Naumann & Steven Moran & Guillaume Segerer & Robert Forkel (eds.)
2015. Tsammalex: A lexical database on plants and animals. Leipzig: Max Planck
Institute for Evolutionary Anthropology. (Available online at
<http://tsammalex.clld.org>, Accessed on 2015-05-13.)*

A full list of contributors is available at <http://tsammalex.clld.org/contributors>

The list of references cited in this document is available at
<http://tsammalex.clld.org/sources>

Kingdom: Animalia

Phylum: Arthropoda

Class: Chilopoda

Order: Scolopendromorpha

Family: Scolopendridae

[Scolopendra](#) .

- **bèṅgĩnè-kèrè** . "large biting centipede (scolopender)".



(CC) BY © Sam Fraser-Smith



(CC) BY-SA © Matt Reinbold



(CC) BY © Jeff Heath and the Dogon and Bangime
Languages Project

Class: Diplopoda

Order: Spirostreptida

Family: Spirostreptidae

[Archispirostreptus](#) .

- **ànzùkùmà** . "giant millipede".



(CC) BY © Jeff Heath and the Dogon and Bangime
Languages Project



(CC) BY © Jeff Heath and the Dogon and Bangime
Languages Project

Class: Insecta

Order: Dermaptera

Family: Forficulidae

[Forficula senegalensis](#) Audinet-Serville, 1838 .

- ɛ̀mà-sá:r`á . "earwig (insect with forked tail)".



(CC) BY © Jeff Heath and the Dogon and Bangime Languages Project



(CC) BY © Jeff Heath and the Dogon and Bangime Languages Project

Order: Hemiptera

Family: Belostomatidae

[Lethocerus](#) .

- d̀l̀-̀p̀nd̀ . "giant water bug".



(CC) BY © Jeff Heath and the Dogon and Bangime Languages Project



(CC) BY © Jeff Heath and the Dogon and Bangime Languages Project



(CC) BY © Jeff Heath and the Dogon and Bangime Languages Project

Family: Coreidae

[Anoplocnemis curvipes](#) .

- n̄m c̀g̀ . "tip wilter bug (leaf-footed bug, legume-eating)".



(CC) BY © Jeff Heath and the Dogon and Bangime Languages Project

Order: Hymenoptera

Family: Apidae

[Apis mellifera](#) Linnaeus, 1758 .

- òmnò . "honey bee".



(CC) BY-SA ©



(CC) BY © Treesha Duncan

Family: Eumenidae

[Delta emarginatum](#) (Linnaeus, 1758) .

- màlè jèmé . "black mud wasp (mud-dauber)".



(CC) BY-SA ©



(CC) BY © Jeff Heath and the Dogon and Bangime Languages Project



(CC) BY-SA ©

[Polistes](#) .

- màlè-jën . "brownish paper wasp sp. with yellow cross-bands, nest in leaves".



(CC) BY-NC © Biopix



(CC) BY © Miroslav Deml



(CC) BY-NC-SA © Flickr

Family: Formicidae

[Camponotus maculatus](#) (Fabricius, 1782) .

- **tàn** . "honey ant (yellow, fast-moving)".



(CC) BY-SA © April Nobile



(CC) BY © Jeff Heath and the Dogon and Bangime Languages Project

[Cataglyphis](#) .

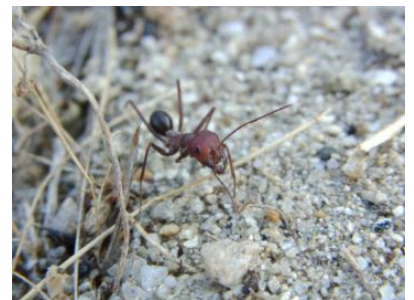
- **gòròmbòlò** . "long-legged, very fast black ant in sand".



(CC) BY-NC-SA © Valter Jacinto



(CC) BY-NC-SA © Valter Jacinto



(CC) BY-SA ©

[Messor](#) .

- **cèn** . "large black grain-eating ant sp. in fields".



(CC) BY-NC-SA © April Nobile



(CC) BY © Jeff Heath and the Dogon and Bangime Languages Project



(CC) BY-NC-SA © April Nobile

Pachycondyla .

- **mè-mèn jèmé** . "stinging black ant sp.".



(CC) BY © Jeff Heath and the Dogon and Bangime Languages Project



(CC) BY-NC-SA © April Nobile



(CC) BY-NC-SA © April Nobile

Order: Lepidoptera

Family: Crambidae

Coniesta ignefusalis Hampson, 1919 .

- **kàrà-sóyé** . "millet stem-borer (snout-moth caterpillar in millet stem)".

Family: Noctuidae

Spodoptera exempta Walker, 1856 .

- **sòyè yùkùlàkùbù** . "African army worm (caterpillar that infests millet in swarms, becomes black with yellow stripes in gregarious form)".



(CC) BY-NC-SA © Alison Forde

Order: Orthoptera

Family: Acrididae

[Anacridium melanorhodon](#) .

- **kà:-kúgùzù** . "grasshopper sp. (tree locust)".



(CC) BY © Jeff Heath and the Dogon and Bangime Languages Project

[Diabolocatantops axillaris](#) .

- **sòm-ká:** . "grasshopper sp.".



(CC) BY © Jeff Heath and the Dogon and Bangime Languages Project



(CC) BY © Jeff Heath and the Dogon and Bangime Languages Project



(CC) BY © Jeff Heath and the Dogon and Bangime Languages Project

[Kraussaria angulifera](#) .

- **kà:-bôy** . "grasshopper sp.".



(CC) BY © Jeff Heath and the Dogon and Bangime
Languages Project



(CC) BY © Jeff Heath and the Dogon and Bangime
Languages Project

[Kraussella amabile](#) .

- **kà: sèŋèrⁿè sêyⁿ** . "grasshopper sp."



(CC) BY © Jeff Heath and the Dogon and Bangime
Languages Project



(CC) BY © Jeff Heath and the Dogon and Bangime
Languages Project

[Oedaleus senegalensis](#) .

- **pèlèm-pêy** . "grasshopper sp."



(CC) BY © Jeff Heath and the Dogon and Bangime
Languages Project



(CC) BY © Jeff Heath and the Dogon and Bangime
Languages Project



(CC) BY-SA ©

[Scintharista notabilis](#) .

- **dùjù-kà:** . "grasshopper sp."



(CC) BY © Jeff Heath and the Dogon and Bangime Languages Project



(CC) BY © Jeff Heath and the Dogon and Bangime Languages Project



PD ©

[Sherifuria haningtoni](#) .

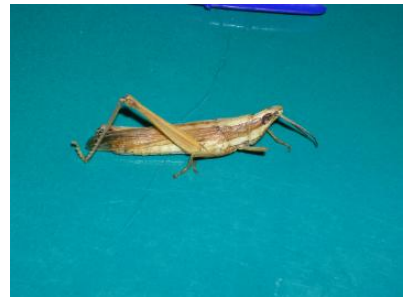
- **kà:-yàpúlò** . "grasshopper sp."



(CC) BY © Jeff Heath and the Dogon and Bangime Languages Project



(CC) BY © Jeff Heath and the Dogon and Bangime Languages Project



(CC) BY © Jeff Heath and the Dogon and Bangime Languages Project

Family: Pyrgomorphidae

[Chrotogonus senegalensis](#) .

- **kà:-bôy** . "toad grasshopper".



(CC) BY © Jeff Heath and the Dogon and Bangime Languages Project



(CC) BY © Jeff Heath and the Dogon and Bangime Languages Project

Phylum: Chordata

Class: Actinopterygii

Order: Characiformes

Family: Alestidae

[Hydrocynus forskahlii](#)

- ìzù-sémnè . "tigerfish sp."
- ìzù dùlò-bàn . "tigerfish sp.". Lit. "fish tail-red".



(CC) BY © Jeff Heath and the Dogon and Bangime Languages Project



(CC) BY © Jeff Heath and the Dogon and Bangime Languages Project



(CC) BY © Jeff Heath and the Dogon and Bangime Languages Project

Order: Osteoglossiformes

Family: Mormyridae

[Marcusenius senegalensis](#)

- ìzù cénè-dòndò . "trunkfish (small fish sp. with protruding lower lip)".



(CC) BY © Jeff Heath and the Dogon and Bangime Languages Project



(CC) BY © Jeff Heath and the Dogon and Bangime Languages Project



(CC) BY © Jeff Heath and the Dogon and Bangime Languages Project

Order: Siluriformes

Family: Mochokidae

[Synodontis schall](#) .

- ìzù-céḡèr"è . "spiny upside-down catfish sp."



(CC) BY-SA © Peter van der Sluijs

Class: Amphibia

Order: Anura

Family: Bufonidae

[Amietophrynus xeros](#) (Tandy, Tandy, Keith and Duff-MacKay, 1976) .

- éḡèlè . "subdesert toad".



(CC) BY © Jeff Heath and the Dogon and Bangime Languages Project



(CC) BY © Jeff Heath and the Dogon and Bangime Languages Project



(CC) BY © Jeff Heath and the Dogon and Bangime Languages Project

Family: Dicroglossidae

[Hoplobatrachus occipitalis](#) (Günther, 1858) .

- ènà: . "groove-crowned bullfrog".



(CC) BY © Jeff Heath and the Dogon and Bangime
Languages Project



(CC) BY © Jeff Heath and the Dogon and Bangime
Languages Project



(CC) BY © Jeff Heath and the Dogon and Bangime
Languages Project

Class: Aves

Order: Accipitriformes

Family: Accipitridae

[Buteo auguralis](#) Salvadori, 1865 .

- **té-têw** . "red-necked buzzard (eats lizards)".



(CC) BY ©

[Gyps rueppellii](#) (A. E. Brehm, 1852) . Characteristics: carnivore; body-length: 115 cm, brown plumage; wings with dark flight feathers and pale linings. ([Sinclair 1994](#): 70)

- **dùbà** . "Rueppell's griffon vulture".



PD ©



(CC) BY-NC-SA © Gerald and Buff Corsi



PD ©

Necrosyrtes monachus (Temminck, 1823) . Characteristics: carnivore; body-length: 70 cm; brown plumage; bare head with red skin. ([Sinclair 1994](#): 72)

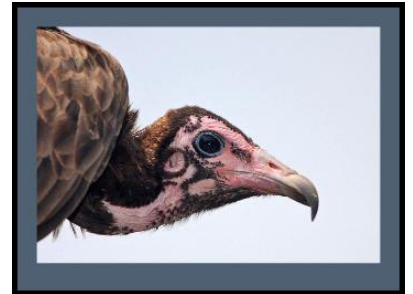
- **jigàrà** . "hooded vulture".



(CC) BY-SA © Atamari



(CC) BY-NC © Scott Bowers



(CC) BY-NC-SA © Steve Garvie

Terathopius ecaudatus (Daudin, 1800) . Characteristics: carnivore; body-length: 55-70 cm; black, white and chestnut plumage; short tail; long wings; red face. Biotope: semi-desert. ([Sinclair 1994](#): 74)

- **àrⁿàkwà** . "bateleur hawk".



(CC) BY © Derek Keats



(CC) BY-SA ©



Public Domain by

Order: Apodiformes

Family: Apodidae

[Apus affinis](#) (J. E. Gray, 1830) .

- wè-wélé . "little African swift".



(CC) MARK © creator:Thomas Hardwicke

Order: Bucerotiformes

Family: Bucerotidae

[Tockus erythrorhynchus](#) (Temminck, 1823) .

- ògò-dògò pílè . "red-billed hornbill".



(CC) BY-NC © ellisms



(CC) BY-SA © Mehmet Karatay



(CC) BY © Biodiversity Heritage Library

[Tockus nasutus](#) (Linnaeus, 1766) .

- ògò-dògò bán . "grey hornbill".



(CC) BY-NC © inaturalist



(CC) BY-SA © Lip Kee from Singapore, Republic of Singapore



(CC) BY © Biodiversity Heritage Library

Family: Bucorvidae

[Bucorvus abyssinicus](#) (Boddaert, 1783) .

- gǐdè-jèmé . "Abyssinian ground hornbill".



(CC) BY © Jeff Heath and the Dogon and Bangime Languages Project

Order: Charadriiformes

Family: Charadriidae

[Vanellus tectus](#) (Boddaert, 1783) .

- cè"~cèr"êw . "black-headed lapwing (plover)".



(CC) BY-NC-SA © Bernard DUPONT



(CC) MARK © ChriKo



(CC) BY © Noel Reynolds

Family: Jacanidae

[*Actophilornis africanus*](#) (Gmelin, 1789) . Characteristics: carnivore; body-length: 28 cm; red-brown body; white throat; yellow breast; black neck; blue bill and forehead. Biotope: flooded grassland, freshwater. ([Sinclair 1994](#): 102)

- **ḡém-** [sǐ-sí:] : "jacana".



(CC) BY ©



(CC) BY-SA ©

Order: Ciconiiformes

Family: Ciconiidae

[*Ciconia abdimii*](#) Lichtenstein, 1823 . Characteristics: carnivore; body-length: 76 cm; black plumage; white lower back and rump; greenish bill and legs;. ([Sinclair 1994](#): 58)

- **sǒ:mbò** . "Abdim's stork".



Public Domain by Taa DoBeS team
(Boden/Güldemann/Naumann)



Public Domain by Taa DoBeS team
(Boden/Güldemann/Naumann)



Public Domain by Taa DoBeS team
(Boden/Güldemann/Naumann)

[*Leptoptilos crumeniferus*](#) (Lesson, 1831) . Characteristics: carnivore; body-length: 150 cm; white body, black wings; naked head and neck; large, pointy bill; whitish legs. ([Sinclair 1994](#): 58)

- **ímìlà** . "marabou stork".



(CC) BY-SA © Ltshears



(CC) BY-SA © unknown (User:Cacophony)

Order: Columbiformes

Family: Columbidae

[*Columba guinea*](#) Linnaeus, 1758 .

- **gùmbà kólókàsá** . "speckled pigeon".



(CC) BY-SA © unknown (Ltshears)



(CC) BY-SA © unknown (ChriKo)

[Columba livia](#) Gmelin, 1789 .

- **gùlmbà jèmé** . "rock pigeon, rock dove".
- **gũlmbà** . "pigeon (domestic)".



(CC) BY-SA © Mike Pennington



(CC) BY-SA © J.M.Garg

[Oena capensis](#) (Linnaeus, 1766) .

- **[pèdè-gèlè] -bèné** . "long-tailed pigeon, namaqua dove".



(CC) BY-SA © Lip Kee from Singapore, Republic of Singapore



(CC) BY-NC-SA © David Blank



http://en.wikipedia.org/wiki/public_domain © C. G. Finch-Davies (1875-1920)

[Streptopelia senegalensis](#) (Linnaeus, 1766) .

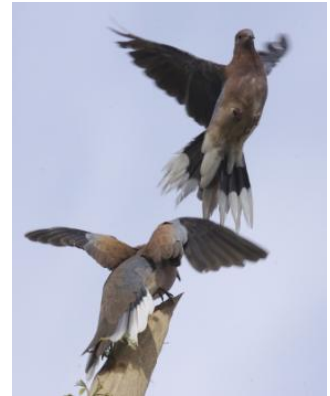
- **pèdè-gèlè** . "laughing dove".



(CC) BY-SA ©



(CC) BY-SA © Lip Kee



(CC) BY-SA ©

[Streptopelia vinacea](#) (Gmelin, 1789) .

- [pèdè-gèlè] -kòyè . "doves with black nape rings (vinaceous dove; mourning dove)".



(CC) BY ©

[Treron waalia](#) (F. A. A. Meyer, 1793) .

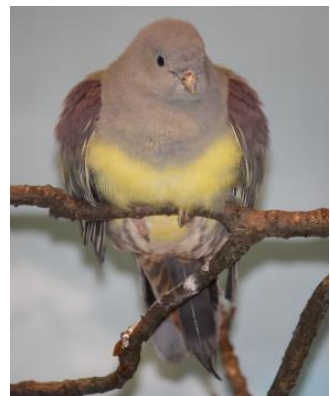
- bàrà-kóyè . "Bruce's green pigeon (yellow-bellied fruit pigeon)".



(CC) MARK © creator:Louis Agassiz Fuertes



(CC) BY-SA ©



(CC) BY-SA © Ltshears

Order: Coraciiformes

Family: Coraciidae

[*Coracias abyssinicus*](#) Hermann, 1783 .

- ጎሳሮ . "Abyssinian roller".



PD ©



(CC) BY-SA ©

Order: Cuculiformes

Family: Cuculidae

[*Centropus senegalensis*](#) (Linnaeus, 1766) .

- èndè-bòrú . "Senegal coucal".



(CC) BY © ThomHasi



(CC) BY © Jeff Heath and the Dogon and Bangime

Languages Project

Order: Falconiformes

Family: Falconidae

[*Falco tinnunculus*](#) Linnaeus, 1758 . Characteristics: carnivore; body-length: 33-39 cm,chestnut back with black spots; grey head; barred and spottet underwing. Biotope: rocky area, mountains. ([Sinclair 1994](#): 92)

- tèw-sé:r"è . "rock kestrel".



(CC) BY-SA ©



(CC) BY-SA ©



(CC) BY-SA ©

Order: Galliformes

Family: Numididae

[Numida meleagris](#) (Linnaeus, 1758) . Characteristics: omnivore; body-length: 56 cm; grey plumage with white dots; blue and red skin on the head. Biotope: grassland, woodland. ([Sinclair 1994](#): 102)

- òmò . "guinea-fowl".



(CC) BY-SA ©



(CC) BY © Jeff Heath and the Dogon and Bangime Languages Project



(CC) BY © Chris Eason

Family: Phasianidae

[Francolinus bicalcaratus](#) (Linnaeus, 1766) .

- sùgù . "double-spurred francolin".



(CC) BY © Biodiversity Heritage Library



(CC) BY © Jeff Heath and the Dogon and Bangime Languages Project



(CC) BY © Jeff Heath and the Dogon and Bangime Languages Project

Ptilopachus petrosus (Gmelin, 1789) .

- **tè:liyà** . "stone partridge".



(CC) BY-SA ©



(CC) BY © Jeff Heath and the Dogon and Bangime Languages Project



(CC) BY © Jeff Heath and the Dogon and Bangime Languages Project

Order: Gruiformes

Family: Gruidae

Balearica pavonina (Linnaeus, 1758) .

- **sèrù-kùmà** . "crowned crane".



Public Domain by



(CC) BY ©

Family: Otididae

Eupodotis senegalensis (Vieillot, 1820) .

- $kà^n-kà^n\hat{a}w^n \sim kà\eta-gà^n\hat{a}w^n$. "white-bellied (= Senegal) bustard".



(CC) BY-SA © Lip Kee



(CC) BY-SA ©



(CC) MARK © Creator:Claude Gibney Finch-Davies

Neotis denhami (Children & Vigors, 1826) .

- $g\ddot{i}d\grave{e} p\grave{i}l\acute{e}$. "Denham's bustard". Lit. "eye white".



Public Domain by



(CC) BY-SA ©



(CC) BY-NC-SA © Bernard DUPONT

Order: Musophagiformes

Family: Musophagidae

[Crinifer piscator](#) (Boddaert, 1783) .

- m̀̀z̀̀n- [k̀̀k̀̀:] . "western grey plantain-eater".



(CC) BY-SA ©



(CC) BY-SA ©



(CC) BY ©

Order: Passeriformes

Family: Corvidae

[Corvus albus](#) Statius Muller, 1776 .

- k̀̀a:̀̀ǹ̀a . "pied crow".



(CC) BY-SA © Thomas Schoch



(CC) BY-SA © Myburgh

[Corvus ruficollis](#) Lesson, 1831 .

- k̀̀a:̀̀ǹ̀a j̀̀em̀̀e . "black crow".



(CC) MARK © G. G. White – delineator. W. H. Dougal – engraver



(CC) BY-SA © Lip Kee Yap



(CC) BY-NC © Biopix

[Ptilostomus afer](#) (Linnaeus, 1766) .

- sà:"zìyà . "piapiac (magpie)".



(CC) BY-SA ©



(CC) BY © Jeff Heath and the Dogon and Bangime Languages Project



(CC) BY-SA ©

Family: Estrildidae

[Lagonosticta senegala](#) (Linnaeus, 1766) .

- bàndèy" bãn . "red-billed firefinch".



(CC) BY © Original uploader was ThomHasi at en.wikipedia



Public Domain by Veli Pohjonen



(CC) BY © msafari2425

Family: Fringillidae

[Serinus leucopygius](#) (Sundevall, 1850) .

- ànàn pùl-iyè . "white-rumped seedeater".



(CC) BY-NC © Scott Bowers

Family: Hirundinidae

[Ptyonoprogne fuligula pusilla](#) (Zedlitz, 1908) .

- èndè-jèsú . "rock martin (swallow)".



(CC) BY © Jeff Heath and the Dogon and Bangime Languages Project



(CC) BY © Jeff Heath and the Dogon and Bangime Languages Project



(CC) BY © Jeff Heath and the Dogon and Bangime Languages Project

Family: Motacillidae

[Motacilla flava](#) Linnaeus, 1758 .

- ànàn pùl-iyè . "yellow wagtail".



(CC) BY-SA ©



(CC) BY-SA © Marek Szczepanek



(CC) BY ©

Family: Muscicapidae

[Thamnolaea cinnamomeiventris](#) (Lafresnaye, 1836) .

- sàdèndè . "cliff chat, white-crowned cliff-chat".



(CC) BY ©



(CC) BY ©



Public Domain by

Family: Passeridae

[Passer griseus](#) (Vieillot, 1817) .

- sàkòlòl-iyè . "grey-headed sparrow".



(CC) BY-SA ©



(CC) BY © Jeff Heath and the Dogon and Bangime Languages Project



(CC) BY-SA © Tom Tarrant

Family: Ploceidae

[Bubalornis albirostris](#) (Vieillot, 1817) .

- ànàn-bìrè-mà-dòṅ . "white-billed buffalo-weaver".



(CC) BY © Jeff Heath and the Dogon and Bangime Languages Project



(CC) BY © Jeff Heath and the Dogon and Bangime Languages Project

[Ploceus cucullatus](#) (Statius Muller, 1776) .

- sàkòlòl-ìyè . "village weaver (bird)".



(CC) BY © Simon J. Tonge



(CC) BY © Simon J. Tonge



(CC) BY © Simon J. Tonge

Family: Pycnonotidae

[Pycnonotus barbatus](#) (Desfontaines, 1789) .

- ànàn tíkòrǒy . "bulbul".



(CC) BY © Valentina



(CC) BY-SA © Lip Kee Yap



Author died more than 70 years ago public domain
images ©

Family: Sturnidae

[Buphagus africanus](#) Linnaeus, 1766 .

- [nà:-mù] -ájàn . "oxpecker (bird)".



(CC) BY-SA © Steve Garvie from Dunfermline, Fife,
Scotland



(CC) BY-SA © Steve Garvie from Dunfermline, Fife,
Scotland



(CC) BY © Biodiversity Heritage Library

[Lamprotornis caudatus](#) (Statius Muller, 1776) .

- sàndíyà . "long-tailed glossy starling".



(CC) BY-SA © Salix



(CC) BY © Thom Haslam



(CC) BY © Biodiversity Heritage Library

[Onychognathus neumanni](#) (Alexander, 1908) .

- **sàndiyà** . "crag chestnut-winged (= Neumann's) starling".
- **sàndiyà jèmé** . "crag chestnut-winged (= Neumann's) starling".

Family: Sylviidae

[Sylvia cantillans](#) (Pallas, 1764) .

- **dèndèm-gòmò** . "subalpine warbler".



(CC) MARK © creator:Nicolas Huet le
Jeunecreator:Jean-Gabriel Prêtre



(CC) BY-NC-SA © José María Escolano

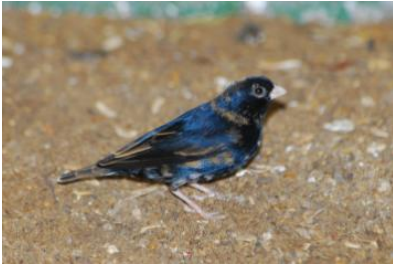


(CC) BY © Biodiversity Heritage Library

Family: Viduidae

[Vidua chalybeata](#) (Statius Muller, 1776) .

- **bàndèy" sà:-jèm** . "village indigobird".



(CC) BY-NC-SA © David Blank



(CC) BY-SA © Hectonichus



(CC) BY © Jeff Heath and the Dogon and Bangime Languages Project

Order: Pelecaniformes

Family: Ardeidae

[Bubulcus ibis](#) (Linnaeus, 1758) . Characteristics: carnivore; body-length: 54 cm; white and light brown plumage; yellow bill; breeding bird has a red bill; often found in association with cattle. Biotope: grassland. ([Sinclair 1994](#): 54)

- àmbà-édè . "cattle egret".



(CC) BY-SA © Atamari



(CC) BY-SA © Atamari



(CC) BY © Jeff Heath and the Dogon and Bangime Languages Project

Order: Piciformes

Family: Picidae

[Dendropicos goertae](#) (Statius Muller, 1776) .

- bòmò-tógù . "grey woodpecker".
- gòmò-tógò . "grey woodpecker".



(CC) BY ©



(CC) BY-SA ©



(CC) BY © Jeff Heath and the Dogon and Bangime Languages Project

Family: Ramphastidae

[*Lybius dubius*](#) (Gmelin, 1788) .

- bà^ɲùŋ-áɲà . "bearded barbet".



(CC) BY ©



(CC) BY-SA © User:Fiorellino/Template:AuthorWVP



(CC) MARK © Bearded_Barbet_Head.jpg:
User:Pieterdebie. derivative work: Ralf Roletschek

Order: Psittaciformes

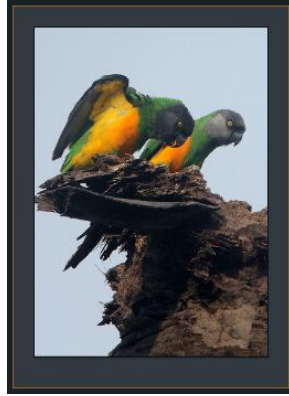
Family: Psittacidae

[*Poicephalus senegalus*](#) (Linnaeus, 1766) .

- sà:-kòyè . "Senegal (= yellow-bellied) parrot".



(CC) BY-SA ©



(CC) BY-NC-SA © Steve Garvie



(CC) BY-NC-SA © David Blank

[Psittacula krameri](#) (Scopoli, 1769) .

- **sà:-kòyè** . "rose-ringed parakeet (= Senegal long-tailed parrot)".



(CC) BY © Jeff Heath and the Dogon and Bangime
Languages Project



(CC) BY © Jeff Heath and the Dogon and Bangime
Languages Project



(CC) BY © Jeff Heath and the Dogon and Bangime
Languages Project

Order: Pteroclidiformes

Family: Pteroclididae

[Pterocles exustus](#) Temminck, 1825 .

- **sùgù pèrèy** . "chestnut-bellied sandgrouse".



(CC) BY-NC-SA © David Bygott



Public Domain by



Public Domain by

Order: Strigiformes

Family: Strigidae

[Bubo cinerascens](#) Guerin-Meneville, 1843 .

- èndûn . "vermiculated (or: greyish) eagle-owl".



(CC) BY © Jeff Heath and the Dogon and Bangime Languages Project



(CC) BY © Jeff Heath and the Dogon and Bangime Languages Project



(CC) BY © Jeff Heath and the Dogon and Bangime Languages Project

Family: Tytonidae

[Tyto alba](#) (Scopoli, 1769) .

- mòngò . "barn owl".
- èné-àpàn . "barn owl".



(CC) BY-SA ©



Public Domain by Racheeo ??



(CC) BY-SA ©

Order: Struthioniformes

Family: Struthionidae

[*Struthio camelus*](#) Linnaeus, 1758 .

- ስገሱ-ሃዕገሱ . "ostrich".



Public Domain by Taa DoBeS team
(Boden/Güldemann/Naumann)



Public Domain by Taa DoBeS team
(Boden/Güldemann/Naumann)



Public Domain by Roland Kiessling

Order: Upupiformes

Family: Phoeniculidae

[*Phoeniculus purpureus*](#) (J. F. Miller, 1784) .

- ስሃ-ሰገገገ . "green wood-hoopoe".



(CC) BY ©



(CC) BY-NC-SA © Bernard DUPONT



(CC) BY-SA ©

Family: Upupidae

[Upupa epops](#) Linnaeus, 1758 .

- gòròmà-đìjèdájà . "hoopoe".



(CC) BY-SA ©



(CC) BY-SA ©



(CC) BY © Biodiversity Heritage Library

Class: Mammalia

Order: Artiodactyla

Family: Bovidae

[Hippotragus equinus koba](#) (Gray, 1872) .

- kà: . "roan antelope, 1.3 m shoulder height, 250 kg (heavy fur, mane, black-tipped tail and ears)".



(CC) BY © Jeff Heath and the Dogon and Bangime
Languages Project



(CC) BY © Jeff Heath and the Dogon and Bangime
Languages Project

Sylvicapra grimmia (Linnaeus, 1758) . Characteristics: herbivore; height: 50cm; the coat varies in colour from light grey-brown to red-brown; the belly and the insides of the legs are white; the front legs have vertical black stripes; there is a tuft of long, black hair on the forehead; the short tail is dark on top and white underneath; females are larger and lack horns;. Biotope: savanna, grassland, woodland, mountains. ([Cillié 1997](#): 64)

- **lòzú** . "bush duiker, 45-70 cm shoulder height, 15-20 kg (goatlike, males with short vertical horns o 18 cm, can leap)".



Public Domain by unknown (Chuckupd)



(CC) BY-NC-SA © Bernard DUPONT



(CC) BY © Biodiversity Heritage Library

Syncerus caffer (Sparrman, 1779) . Characteristics: herbivore; height: 1-1,7m; this cattle-like animal is born with a light reddish-brown coat that darkens with age until it is grey-black; both sexes are horned, but the horns of the male are especially large with thick bosses;. Biotope: savanna, scrubforest, forest, grassland. ([Cillié 1997](#): 84)

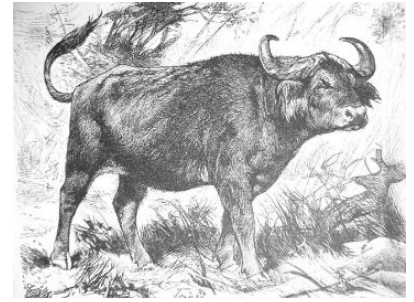
- **òy-nâ** . "African buffalo".



(CC) BY-SA © unknown, Haplochromis?



(CC) BY © Stig Nygaard



(CC) MARK © Wikimedia Commons

Family: Giraffidae

Giraffa camelopardalis (Linnaeus, 1758) . Characteristics: herbivore; characteristic are the long legs and the very long neck; the whitish-yellow body is covered with brown patches that get darker as the animal ages; on top of the head are two short horns that are covered with black hair; they have a mane of short, stiff hair;. Biotope: savanna, scrubforest, grassland, woodland. (Cillié 1997: 96)

- **yámsà** . "giraffe".



Public Domain by Taa DoBeS team

(Boden/Güldemann/Naumann)



Public Domain by Taa DoBeS team

(Boden/Güldemann/Naumann)



Public Domain by Taa DoBeS team

(Boden/Güldemann/Naumann)

Family: Hippopotamidae

Hippopotamus amphibius Linnaeus, 1758 . Characteristics: herbivore; height: 150-165 cm; this very large semiaquatic animal is generally grey-brown but the belly and skinfolds are yellowish-pink; it has a very large mouth; the nostrils and the eyes are on top of the head; the ears are small and rounded;. Biotope: freshwater, swamps. (Cillié 1997: 106)

- **điyènè** . "hippo".



Public Domain by Christfried Naumann



© Geoff Gallice

Family: Suidae

[Phacochoerus africanus](#) (Gmelin, 1788) . Characteristics: omnivore; the body is grey and sparsely covered with long bristles; there is a mane of dark hair with lighter tips; the adults have large tusks which curve over the broad snout; the males have larger tusks than the females and have three pairs of warts on the sides of the face; they run with their tail up;. Biotope: savanna, grassland, desert. ([Cillié 1997](#): 92)

- òy-tól . "warthog (boar)".



© Geoff Gallice



(CC) BY-SA © Delphine Bruyere



(CC) PUBLICDOMAIN © Trisha M Shears

Order: Carnivora

Family: Canidae

[Canis adustus adustus](#) Sundevall, 1847 .

- òy-izè . "side-striped jackal".

[Canis aureus](#) Linnaeus, 1758 .

- sè: . "golden jackal".



(CC) BY-SA © D. Gordon E. Robertson



(CC) BY-NC-SA © David Bygott



(CC) BY © Jeff Heath and the Dogon and Bangime Languages Project

Vulpes pallida (Cretzschmar, 1826) .

- **yùrùgù** . "sand fox, pale fox".

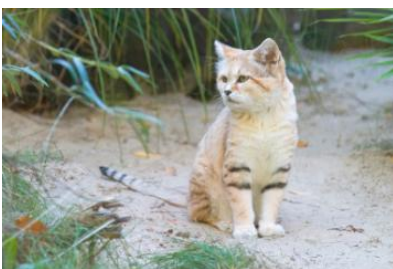


Public Domain by

Family: Felidae

Felis margarita Loche, 1858 .

- **òy-gâ:ⁿ** . "sand cat, 2-3 kg (sandy yellow, ears widely spaced)".



(CC) BY-SA ©



(CC) BY ©



(CC) BY-SA ©

[Leptailurus serval](#) (Schreber, 1776) . Characteristics: carnivore; height 55-65cm; the Serval is a slender cat with long legs, a small head and large rounded ears; the colour ranges from dull white to golden-yellow with black stripes down the neck and black spots on the body; it can be distinguished from the Cheetah by the lack of tear marks and the larger ears;. Biotope: savanna, forest, grassland. ([Cillié 1997](#): 118)

- **gà:n-sàl** . "serval cat, 12 kg (spotted; long legs, pointed ears)".



(CC) BY-SA © unknown



(CC) PUBLICDOMAIN © Stolz, Gary M.

[Panthera leo](#) (Linnaeus, 1758) . Characteristics: carnivore; height: 110-120 cm; the Lion is the largest cat in Africa and the only one where the males have manes, the colour of the mane ranges from blonde to black; the back of the round ears is black; the males are much larger than the females and have manes;. Biotope: savanna, scrubforest, forest, grassland, mountains. ([Cillié 1997](#): 110)

- **dùŋ-yàrà** . "lion".



(CC) BY ©



© Geoff Gallice



Public Domain by Taa DoBeS team
(Boden/Güldemann/Naumann)

[Panthera pardus](#) (Linnaeus, 1758) .

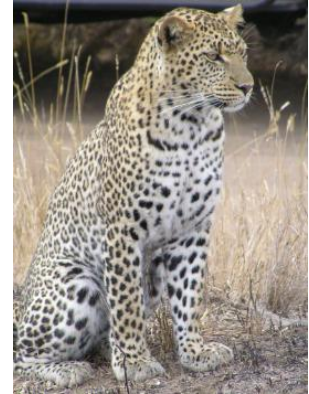
- **tà: pîlè** . "leopard".



(CC) BY-SA © Haplochromis



(CC) BY-SA ©



(CC) BY-SA © user at project|JanErkamp|wikipedia|en

Family: Herpestidae

Galerella sanguinea (Rüppell, 1835) . Characteristics: omnivore; the colour of this Mongoose is usually correlated with the soil colour for camouflage and ranges from yellowish-grey to reddish; the long and upwards bent tail has a black tip;. (Cillié 1997: 152)

- **sàr"à-gànàlà** . "slender mongoose (small, tip of tail black or red, less than 1 kg)".



(CC) BY-SA © Sara&Joachim



Public Domain by Andrew Smith (1797-1872)



(CC) BY © Jeff Heath and the Dogon and Bangime Languages Project

Ichneumia albicauda (G.[Baron] Cuvier, 1829) . Characteristics: omnivore; body-length 60cm; the coat is grey-brown; the hind legs are very long causing the back to slant forward when it walks; the tail is covered in long white hair;. Biotope: savanna, forest, grassland, woodland. (Cillié 1997: 156)

- **kòndùnò** . "white-tailed mongoose (to 4 kg)".



(CC) BY-SA © MCSchaeffer



(CC) MARK © Frank E. Beppard



(CC) BY © Jeff Heath and the Dogon and Bangime Languages Project

Family: Hyaenidae

Crocuta crocuta (Erxleben, 1777) . Characteristics: carnivore; height: 70-90 cm; the colour ranges from dull yellow to white, with irregular dark spots; it has a short mane and overall short hair; the animal has a large head with round ears, a strong neck and a sloping back;. Biotope: savanna, scrubforest, montane forest, grassland. ([Cillie 1997](#): 124)

- **tà: kóhórⁿó-kàýⁿ** . "spotted hyena".



(CC) BY-SA © Gastrocycle



(CC) BY © Marieke Kuijpers



(CC) BY-SA © Jerry Friedman

Hyaena hyaena (Linnaeus, 1758) .

- **tà: tómbólómà** . "striped hyena".



(CC) BY-NC-SA © David Bygott



(CC) BY © Simon J. Tonge



(CC) MARK © Beppard, Frank E. (Frank Evers), 1858-1925

Family: Mustelidae

[Ictonyx striatus](#) (Perry, 1810) . Characteristics: carnivore; height 10-15cm; this short legged predator has black fur with 4 parallel, white stripes on the back; it has white marks underneath the ears and between the eyes;. Biotope: savanna, forest, grassland, woodland, semi-desert, swamps, mountains. ([Cillié 1997](#): 148)

- **túmó** . "zorilla (polecat)".



(CC) BY © Jeff Heath and the Dogon and Bangime

Languages Project



CC-Zero ©



(CC) BY-NC-SA © Antonius El Kommos

[Mellivora capensis](#) (Schreber, 1776) . Characteristics: omnivore; height: 25-30cm; the body is black with a broad, greyish-white saddle on the back and head;the legs are short and equipped with sharp claws; the black tail is short; the ears are very small;. Biotope: savanna, forest, grassland. ([Cillié 1997](#): 140)

- **đimná** . "ratel (honey badger)".



(CC) BY-SA ©



(CC) BY-SA © Matěj Batha



(CC) MARK © Creator:Joseph Smit

Order: Chiroptera

Family: Pteropodidae

[Rousettus aegyptiacus](#) (E. Geoffroy, 1810) . Characteristics: herbivore; body-length: 15cm, wing-span: 60cm; dark brown fur; pointy ears;. Biotope: savanna, forest, grassland. ([Cillié 1997](#): 207)

- **ázù** . "blackish fruit bat sp.".



(CC) BY-SA © Artemy Voikhansky



(CC) BY-SA ©



(CC) BY-NC-SA © Description de l'Égypte, Book 34 (1826), Volume I - Planches : Histoire Naturelle.

Family: Rhinopomatidae

[Rhinopoma microphyllum](#) (Brünnich, 1782) .

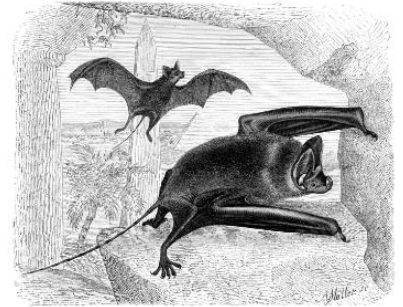
- azù pèndù . "mouse-tailed bat (insectivorous, crepuscular)".



(CC) BY-SA ©



(CC) BY © Jeff Heath and the Dogon and Bangime Languages Project



Public Domain by

Order: Erinaceomorpha

Family: Erinaceidae

[Atelerix albiventris](#) (Wagner, 1841) .

- pèzùmà gòmbìl-ìyè . "hedgehog".



(CC) BY © Jeff Heath and the Dogon and Bangime
Languages Project



(CC) BY © Jeff Heath and the Dogon and Bangime
Languages Project

Order: Hyracoidea

Family: Procaviidae

[Procavia capensis ruficeps](#) (Hemprich and Ehrenberg, 1832) .

- kóndó . "rock hyrax, dassie, 3-4 kg".



(CC) BY © Jeff Heath and the Dogon and Bangime
Languages Project

Order: Lagomorpha

Family: Leporidae

[Lepus capensis](#) Linnaeus, 1758 . Characteristics: herbivore; this typical hare has well developed hind legs for running and leaping; the ears as well as the eyes are large; the colour of the coat varies from light brown to reddish to sandy grey; the females are larger than the males;. Biotope: grassland, desert. ([Cillié 1997](#): 186)

- zòmó . "hare (all forms)".



(CC) BY-SA © benjamint



(CC) MARK © Creator:Joseph Smit



(CC) BY-SA © Haplochromis

Order: Primates

Family: Cercopithecidae

[Erythrocebus patas](#) (Schreber, 1774) .

- òmnò bãn . "patas monkey".



(CC) BY-SA ©



(CC) BY ©



(CC) BY-SA © Brocken Inaglorly

[Papio anubis](#) (Lesson, 1827) .

- kòyè . "baboon".



(CC) BY-NC-SA © Gerald and Buff Corsi



(CC) BY-NC-SA © Gerald and Buff Corsi



(CC) BY © Simon J. Tonge

Order: Proboscidea

Family: Elephantidae

[Loxodonta africana](#) (Blumenbach, 1797) . Characteristics: herbivore; height: 3-3,75m; the African Bush elephant has large flat ears; its trunk ends with two opposing extensions; both sexes have large tusks; females are smaller and have smaller tusks;. Biotope: savanna, marshland, forest, grassland, desert, swamps. ([Cillié 1997](#): 100)

- gòyⁿ . "elephant".



(CC) BY-SA © nickandmel2006



Public Domain by Gorgo

Order: Rodentia

Family: Hystricidae

[Hystrix cristata](#) Linnaeus, 1758 .

- ùmêm . "porcupine".



(CC) BY-SA ©



(CC) MARK © creator:Thomas Hardwicke

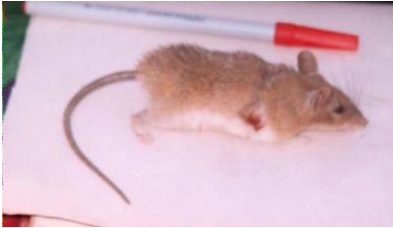


(CC) BY-NC-SA © David Bygott

Family: Muridae

[Acomys johannis](#) .

- òyè-zòwè ~ òyè-zùyè . "spiny-haired mouse sp.".



(CC) BY © Jeff Heath and the Dogon and Bangime Languages Project



(CC) BY © Jeff Heath and the Dogon and Bangime Languages Project

[Arvicanthis niloticus](#) (Desmarest, 1822) .

- **sàzà-óyè** . "unstriped grass rat (diurnal)".



(CC) BY © Jeff Heath and the Dogon and Bangime Languages Project



(CC) BY © Jeff Heath and the Dogon and Bangime Languages Project



(CC) BY © Jeff Heath and the Dogon and Bangime Languages Project

[Cricetomys gambianus](#) Waterhouse, 1840 . Characteristics: omnivore; total length: 80 cm, tail-length: 40 cm; grey-brown fur on the back, belly lighter; long naked tail which is white towards the end; dark eye-ring; long thin ears;. Biotope: savanna, forest, grassland. ([Stuart and Stuart 2007](#): 108)

- **gù-gùzù** . "giant pouched rat (about 2 kilos)".



(CC) BY-SA ©



(CC) BY-SA ©



(CC) BY © Jeff Heath and the Dogon and Bangime Languages Project

[Mastomys natalensis](#) (Smith, 1834) . Characteristics: herbivore; length: 24cm, tail-length: 11cm; underparts paler than upperparts, females have up to 12 pairs of nipples. Biotope: savanna, forest, shrubland, human settlement. ([Stuart and Stuart 2007](#): 126)

- **òyè jèmé** . "black form of African soft-furred rat (house mouse)".



(CC) BY © Jeff Heath and the Dogon and Bangime Languages Project



(CC) BY ©



(CC) BY ©

[Myomys daltoni](#) (Thomas, 1892) .

- **òyè pìlè** . "Dalton's mouse (small, light-colored, belly white, tail longer than body, in field or houses, can climb)".



(CC) BY © Zbyszek Boratynski



(CC) BY © Jeff Heath and the Dogon and Bangime Languages Project



(CC) BY © Jeff Heath and the Dogon and Bangime Languages Project

Family: Sciuridae

[Heliosciurus gambianus](#) (Ogilby, 1835) .

- **sàrà-gùl** . "Gambian sun squirrel (arboreal)".



(CC) BY © N3ddo!



(CC) BY © N3ddo!

Order: Soricomorpha

Family: Soricidae

[*Crocidura cinderella*](#) Thomas, 1911 .

- òyè sènzú . "tiny white-toothed shrew sp".



(CC) BY © Jeff Heath and the Dogon and Bangime

Languages Project

Order: Tubulidentata

Family: Orycteropodidae

[*Orycteropus afer*](#) (Pallas, 1766) . Characteristics: insectivore; height: 60 cm; this animal has a long pig-like snout, large, erect ears and a thick tail; most of the body is naked, only the legs are covered with dark hair; the forefeet have strong claws for digging; it has a long (30 cm), sticky tongue which allows it to catch termites and ants;. Biotope: savanna, grassland. ([Cillié 1997](#): 172)

- ámpá . "aardvark, 50 kg".



Public Domain by Christfried Naumann



(CC) BY-SA ©



(CC) BY-SA ©

Class: Reptilia

Order: Crocodylia

Family: Crocodylidae

[*Crocodylus niloticus*](#) Laurenti, 1768 .

- ⚔:ⁿ . "Nile crocodile".



(CC) BY-SA © MathKnight and Zachi Evenor



(CC) BY-SA © Marco Schmidt



(CC) BY-SA © Atamari

Order: Squamata

Family: Agamidae

[*Agama sankaranica*](#) Chabanaud, 1918 .

- òy-cénjù . "ground-dwelling agama lizard sp.".



(CC) BY © Jeff Heath and the Dogon and Bangime Languages Project



(CC) BY © Jeff Heath and the Dogon and Bangime Languages Project



(CC) BY © Jeff Heath and the Dogon and Bangime Languages Project

Family: Atractaspididae

[*Atractaspis watsoni*](#) Boulenger, 1908 .

- ðà jèmé . "mole viper".



(CC) BY © Jeff Heath and the Dogon and Bangime Languages Project



(CC) BY © Jeff Heath and the Dogon and Bangime Languages Project



(CC) BY © Jeff Heath and the Dogon and Bangime Languages Project

Family: Boidae

[*Gongylophis muelleri*](#) Angel, 1938 .

- τόμδέηε ~ βόντэндε . "sand boa, thick-bodied venomous snake sp.".



(CC) BY © Jeff Heath and the Dogon and Bangime
Languages Project



(CC) BY © Jeff Heath and the Dogon and Bangime
Languages Project



(CC) BY © Jeff Heath and the Dogon and Bangime
Languages Project

[Python sebae](#) (Gmelin, 1789) .

- kóndó-dúlmà . "rock python".



(CC) BY-SA © Joachim Huber



(CC) BY © Tigerpython



(CC) MARK © Sir Andrew Smith

Family: Chamaeleonidae

[Chamaeleo africanus](#) Laurenti, 1768 .

- èndé-zĩ:ndë . "chameleon".



(CC) BY © Jeff Heath and the Dogon and Bangime
Languages Project



(CC) BY © Jeff Heath and the Dogon and Bangime
Languages Project



(CC) BY © Jeff Heath and the Dogon and Bangime
Languages Project

Family: Colubridae

[Psammophis elegans](#) (Shaw, 1802) .

- àⁿsá:rⁿà . "arboreal colubrid snake sp."



(CC) BY © Jeff Heath and the Dogon and Bangime
Languages Project



(CC) BY © Jeff Heath and the Dogon and Bangime
Languages Project



(CC) BY © Jeff Heath and the Dogon and Bangime
Languages Project

[Psammophis sibilans](#) (Linnaeus, 1758) .

- sàzà bǒ:nò . "terrestrial colubrid snake sp."



(CC) BY © Jeff Heath and the Dogon and Bangime
Languages Project



(CC) BY © Jeff Heath and the Dogon and Bangime
Languages Project



(CC) BY-SA ©

Family: Elapidae

[Naja haje](#) (Linnaeus, 1758) .

- òlòm . "Egyptian cobra".



Public Domain by John Walker, Head



(CC) BY © Jeff Heath and the Dogon and Bangime
Languages Project



Public Domain by Ltshears

[*Naja nigricollis*](#) Reinhardt, 1843 .

- òbà . "spitting cobra".



(CC) BY © Luca Boldrini



(CC) BY © Jeff Heath and the Dogon and Bangime Languages Project

Family: Gekkonidae

[*Ptyodactylus ragazzii*](#) Anderson, 1898 .

- pèndù . "fan-footed house gecko".



(CC) BY © Jeff Heath and the Dogon and Bangime Languages Project



(CC) BY © Jeff Heath and the Dogon and Bangime Languages Project

[*Tarentola ehippiata*](#) O'shaughnessy, 1875 .

- dúmbù . "arboreal gecko sp.".



(CC) BY-NC-SA © Thomas Brown



(CC) BY-NC-SA © Thomas Brown



(CC) BY © Jeff Heath and the Dogon and Bangime Languages Project

Family: Scincidae

[Chalcides ocellatus](#) (Forskål, 1775) .

- **kàmbè-órⁿò** . "spotted skink sp. (thick body, very short legs)".



(CC) BY © Jeff Heath and the Dogon and Bangime
Languages Project

[Trachylepis perrotetii](#) (Duméril & Bibron, 1839) .

- **dèlòmpàlà** . "spotted skink sp. (relatively long legs)".
- **dùlòmfàlà** . "spotted skink sp. (relatively long legs)".



(CC) BY © liesvanrompaey



(CC) BY © Lies Van Rompae



(CC) BY © Jeff Heath and the Dogon and Bangime
Languages Project

[Trachylepis quinquetaeniata](#) (Lichtenstein, 1823) .

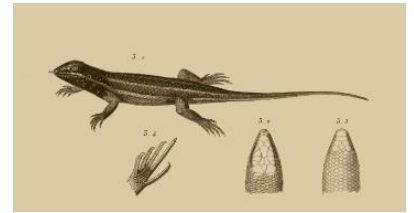
- **bà:gà** . "five-lined skink".



(CC) BY-NC-SA © cultnat



(CC) BY © Jeff Heath and the Dogon and Bangime Languages Project



(CC) BY-NC-SA © Description de l'Égypte, Book 34 (1826), Volume I - Planches : Histoire Naturelle.

Family: Varanidae

[Varanus griseus](#) (Daudin, 1803) .

- **ù:r"ù** . "grey monitor lizard (very long tail, terrestrial)".



(CC) PUBLICDOMAIN © Omid Mozaffari



(CC) BY-NC-SA © cultnat



(CC) BY-NC-SA © Description de l'Égypte, Book 34 (1826), Volume I - Planches : Histoire Naturelle.

[Varanus niloticus](#) (Linnaeus, 1766) .

- **àyⁿ** . "Nile monitor lizard (climbs trees near water)".



(CC) BY © Simon J. Tonge



Public Domain by Alexis Naumann



(CC) BY-NC-SA © Description de l'Égypte, Book 34 (1826), Volume I - Planches : Histoire Naturelle.

Family: Viperidae

[Bitis arietans](#) (Merrem, 1820) .

- kúgùl . "puff adder".



(CC) BY-NC-SA © Gerald and Buff Corsi



Public Domain by Alexis Naumann



Public Domain by Alexis Naumann

[Cerastes vipera](#) (Linnaeus, 1758) .

- ól-sò: . "sand viper". From Tommo So "field-word", i.e. if bitten you won't make it back to the village .



(CC) BY-SA © LA Dawson



(CC) BY © Jeff Heath and the Dogon and Bangime

Languages Project

Order: Testudines

Family: Pelomedusidae

[Pelomedusa subrufa](#) (Bonnaterre, 1789) .

- bàrà-círù . "small aquatic tortoise (rainy season)".



(CC) BY-SA © Ltshears



(CC) BY © Jeff Heath and the Dogon and Bangime

Languages Project



(CC) BY © Jeff Heath and the Dogon and Bangime

Languages Project

Family: Testudinidae

[Geochelone sulcata](#) (Miller, 1779) .

- àṅgùṅgùrù . "giant tortoise (terrestrial)".



(CC) BY © Jeff Heath and the Dogon and Bangime Languages Project



(CC) BY © Jeff Heath and the Dogon and Bangime Languages Project



(CC) BY © Jeff Heath and the Dogon and Bangime Languages Project

Class: Sarcopterygii

Order: Lepidosireniformes

Family: Protopteridae

[Protopterus annectens](#) (Owen, 1839) .

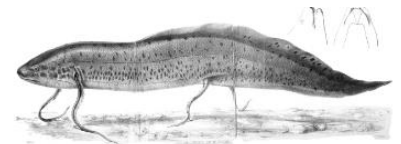
- ìzù-nènè . "African lungfish".



(CC) BY ©



(CC) BY-SA ©



(CC) MARK © G.H.Ford

Class: other

Order: Bucerotiformes

Family: Bucerotidae

[Tockus sp.](#) .

- àḡḡ-dòḡò . "hornbill spp. (grey and red-billed)".

Phylum: Mollusca

Class: Bivalvia

Order: Carditoida

Family: Astartidae

[Digitaria](#) .

- bùlò-mà-tâ:" . "grass sp."

Kingdom: Fungi

Phylum: Basidiomycota

Class: Agaricomycetes

Order: Agaricales

Family: Agaricaceae

[Podaxis pistillaris](#) (L.) Fr. 1829 .

- pùlà-dê: . "puffball". Lit. "Fulbe-penis".
- pùlá-mù dè: . "puffball". Lit. "Fulbe's penis".



(CC) BY © Jeff Heath and the Dogon and Bangime
Languages Project



(CC) BY © Jeff Heath and the Dogon and Bangime
Languages Project



(CC) BY-NC-SA © Douglas Smith

Kingdom: Metazoa

Phylum: Arthropoda

Class: Arachnida

Order: Scorpiones

Family: Buthidae

[Androctonus amoreuxi](#) .

- **tè:rⁿè** . "fat-tailed scorpion".
- **sákènélé** . "baby fat-tailed scorpion".



(CC) BY © Jeff Heath and the Dogon and Bangime Languages Project



(CC) BY © Jeff Heath and the Dogon and Bangime Languages Project



(CC) BY © Jeff Heath and the Dogon and Bangime Languages Project

Class: Insecta

Order: Lepidoptera

Family: Noctuidae

[Heliocheilus albipunctella](#) .

- **sòyè-tógò** . "millet head-miner (caterpillar in millet grain spike)".

Phylum: Chordata

Class: Reptilia

Order: Squamata

Family: Colubridae

[Bamanophis dorri](#) (Lataste, 1888) .

- **yàmbàmbàlà** . "colubrid snake sp.".



(CC) BY © Jeff Heath and the Dogon and Bangime Languages Project



(CC) BY © Jeff Heath and the Dogon and Bangime Languages Project



(CC) BY © Jeff Heath and the Dogon and Bangime Languages Project

Kingdom: Plantae

Phylum: Magnoliophyta

Class: Liliopsida

Order: Commelinales

Family: Commelinaceae

[Commelina forskalaei](#)

- àbùdù cé:r"è . "herb sp."



(CC) BY © Jeff Heath and the Dogon and Bangime Languages Project



(CC) BY © Jeff Heath and the Dogon and Bangime Languages Project



(CC) BY © Jeff Heath and the Dogon and Bangime Languages Project

Class: Magnoliopsida

Order: Brassicales

Family: Capparaceae

[Crataeva adansonii subsp. odora](#) .

- **bèlà-kûl** . "tree sp."



(CC) BY © Jeff Heath and the Dogon and Bangime Languages Project



(CC) BY © Jeff Heath and the Dogon and Bangime Languages Project



(CC) BY © Jeff Heath and the Dogon and Bangime Languages Project

Order: Cucurbitales

Family: Cucurbitaceae

[Cucumis melo subsp. agrestis var. agrestis Naudin](#) .

- **cènjù-mú kàmbè** . "wild melon sp.". Lit. "agamas' zaban".



(CC) BY © Jeff Heath and the Dogon and Bangime Languages Project



(CC) BY © Jeff Heath and the Dogon and Bangime Languages Project



(CC) BY © Jeff Heath and the Dogon and Bangime Languages Project

Order: Garryales

Family: Garryaceae

[Grewia flavescens var flavescens](#) .

- **ə̀n̄zə̀-ə̀n̄zə̀** . "shrub sp."



(CC) BY © Jeff Heath and the Dogon and Bangime Languages Project



(CC) BY © Jeff Heath and the Dogon and Bangime Languages Project



(CC) BY © Jeff Heath and the Dogon and Bangime Languages Project

Order: Lamiales

Family: Lamiaceae

[Vitex madiensis subsp. madiensis Oliv.](#) .

- mĩrⁿàm pèl-ìyè . "tree sp."



(CC) BY © Jeff Heath and the Dogon and Bangime Languages Project



(CC) BY © Jeff Heath and the Dogon and Bangime Languages Project



(CC) BY © Jeff Heath and the Dogon and Bangime Languages Project

Order: Laurales

Family: Hernandiaceae

[Gyrocarpus americanus subsp. pinnatilobus](#) .

- pò-pòlòm . "tree sp."

Order: Malpighiales

Family: Malpighiaceae

[*Acridocarpus monodii*](#) Arènes & P. Jaeger ex Birnbaum & J. Florence .

- **nà-némdà** . "shrub sp.". Lit. "cow-tongue".

Order: Malvales

Family: Malvaceae

[*Bombax costatum*](#) Pellegrin & Vuillet .

- **tóḡòr^ò** . "tree sp.".



(CC) BY © Jeff Heath and the Dogon and Bangime Languages Project



(CC) BY © Jeff Heath and the Dogon and Bangime Languages Project

Order: Myrtales

Family: Combretaceae

[*Combretum aculeatum*](#) Vent. .

- **cémsè** . "shrub sp.".



(CC) BY © Jeff Heath and the Dogon and Bangime Languages Project



(CC) BY © Jeff Heath and the Dogon and Bangime Languages Project



(CC) BY © Jeff Heath and the Dogon and Bangime Languages Project

[*Terminalia macroptera*](#) Guill. & Perr. .

- **b̀̀z̀̀-̀̀k̀̀k̀̀** . "tree sp."



(CC) BY © Jeff Heath and the Dogon and Bangime
Languages Project



(CC) BY © Jeff Heath and the Dogon and Bangime
Languages Project



(CC) BY © Jeff Heath and the Dogon and Bangime
Languages Project

Order: Rosales

Family: Cannabaceae

[*Celtis toka*](#) (Forssk.) F.N. Hepper & J.R.I. Wood .

- **p̃r̀̀** . "tree sp."



(CC) BY © Jeff Heath and the Dogon and Bangime
Languages Project



(CC) BY © Jeff Heath and the Dogon and Bangime
Languages Project



(CC) BY-NC-SA © Marco Schmidt

Family: Moraceae

[*Ficus cordata subsp. lecardii*](#) C.C. Berg .

- **éⁿsáanz̀̀** . "fig tree sp."



(CC) BY © Jeff Heath and the Dogon and Bangime Languages Project



(CC) BY © Jeff Heath and the Dogon and Bangime Languages Project



(CC) BY © Jeff Heath and the Dogon and Bangime Languages Project

Order: Sapindales

Family: Anacardiaceae

[Lannea microcarpa](#) Engl. & K. Krause .

- kùdà . "wild grape ree".



(CC) BY-NC-SA © Research Institute Senckenberg



(CC) BY © Jeff Heath and the Dogon and Bangime Languages Project



(CC) BY © Jeff Heath and the Dogon and Bangime Languages Project

Phylum: Tracheophyta

Class: Liliopsida

Order: Alismatales

Family: Araceae

[Amorphophallus baumannii](#) (Engl.) N.E.Br. .

- bàdó . "tiger lily, herb sp.".



(CC) BY © Jeff Heath and the Dogon and Bangime
Languages Project



(CC) BY © Jeff Heath and the Dogon and Bangime
Languages Project



(CC) BY © Jeff Heath and the Dogon and Bangime
Languages Project

[Hyphaene thebaica](#) (L.) Mart. .

- **nèmà** . "doum palm".



(CC) BY © Jeff Heath and the Dogon and Bangime
Languages Project



(CC) BY-NC-SA © Bibliotheca Alexandrina - EOL Ar



(CC) BY © Jeff Heath and the Dogon and Bangime
Languages Project

[Phoenix dactylifera](#) L. .

- **ànàsà:rà-mòlò** . "date palm".



(CC) MARK © Mmcknight4



(CC) BY-SA ©



(CC) BY-SA © Nevit Dilmen

Order: Asparagales

Family: Amaryllidaceae

[Crinum ornatum](#) (Aiton) Herb. .

- **lòzú** . "wild onion sp."



(CC) BY © Jeff Heath and the Dogon and Bangime Languages Project



(CC) BY © Jeff Heath and the Dogon and Bangime Languages Project



(CC) BY © Jeff Heath and the Dogon and Bangime Languages Project

[Pancratium trianthum](#) Herb. .

- **ñjè-gǎw** . "wild onion sp."



(CC) BY © Jeff Heath and the Dogon and Bangime Languages Project



(CC) BY © Jeff Heath and the Dogon and Bangime Languages Project



(CC) BY © Jeff Heath and the Dogon and Bangime Languages Project

Family: Xanthorrhoeaceae

[Aloe tenuifolia](#) .

- **ñjè-ín** . "small aloe sp.". Lit. "dog-tooth".



(CC) BY © Jeff Heath and the Dogon and Bangime
Languages Project



(CC) BY © Jeff Heath and the Dogon and Bangime
Languages Project



(CC) BY © Jeff Heath and the Dogon and Bangime
Languages Project

Order: Commelinales

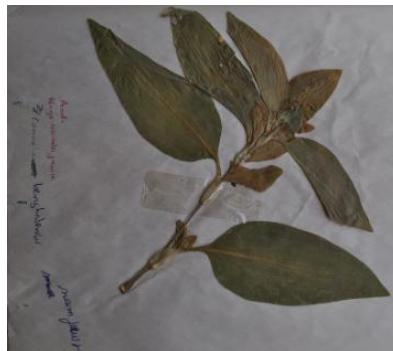
Family: Commelinaceae

[Commelina benghalensis benghalensis](#) .

- àbùdù sòm-béndè . "herb sp." . Lit. "Commelina horse-bag" .



(CC) BY © Jeff Heath and the Dogon and Bangime
Languages Project



(CC) BY © Jeff Heath and the Dogon and Bangime
Languages Project



(CC) BY © Jeff Heath and the Dogon and Bangime
Languages Project

Order: Poales

Family: Cyperaceae

[Cyperus articulatus](#) L. .

- màyàm-tĩmè . "sedge sp." .



(CC) BY © Jeff Heath and the Dogon and Bangime Languages Project



(CC) BY © Jeff Heath and the Dogon and Bangime Languages Project



(CC) BY © Jeff Heath and the Dogon and Bangime Languages Project

[Cyperus maculatus](#) Boeckler .

- **máyàm** . "sedge sp."



(CC) BY © Jeff Heath and the Dogon and Bangime Languages Project



(CC) BY © Jeff Heath and the Dogon and Bangime Languages Project



(CC) BY © Jeff Heath and the Dogon and Bangime Languages Project

[Cyperus rotundus](#) L. .

- **gwà:-dīl** . "sedge sp."



(CC) BY © Jeff Heath and the Dogon and Bangime Languages Project



(CC) BY © Jeff Heath and the Dogon and Bangime Languages Project



(CC) BY © Jeff Heath and the Dogon and Bangime Languages Project

[Pycreus macrostachyos](#) (Lam.) J.Raynal .

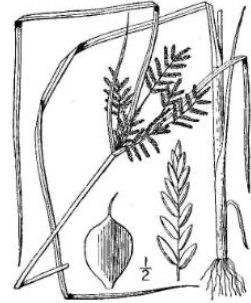
- **sárkòmò** . "sedge sp."



(CC) BY © Jeff Heath and the Dogon and Bangime Languages Project



(CC) BY © Jeff Heath and the Dogon and Bangime Languages Project



(CC) MARK © USDA NRCS PLANTS Database

Family: Poaceae

[Andropogon gayanus bisquamulatus](#) .

- **èzú-bèl** . "tall grass sp". Lit. "waterjar-grass".



(CC) BY © Jeff Heath and the Dogon and Bangime Languages Project



(CC) BY © Jeff Heath and the Dogon and Bangime Languages Project



(CC) BY © Jeff Heath and the Dogon and Bangime Languages Project

[Cenchrus biflorus](#) Roxb. .

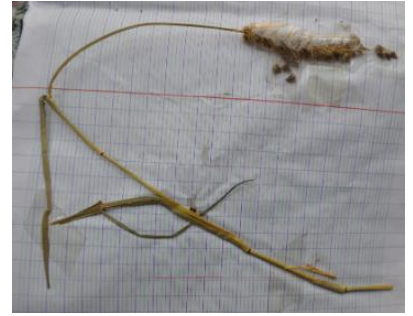
- **kólmó** . "burrgrass".



(CC) BY © Jeff Heath and the Dogon and Bangime Languages Project



(CC) BY © Jeff Heath and the Dogon and Bangime Languages Project



(CC) BY © Jeff Heath and the Dogon and Bangime Languages Project

Cenchrus prieurii (Kunth) Maire .

- **kólbó** . "grass similar to burrgrass".



(CC) BY © Jeff Heath and the Dogon and Bangime Languages Project



(CC) BY © Jeff Heath and the Dogon and Bangime Languages Project



(CC) BY © Jeff Heath and the Dogon and Bangime Languages Project

Chrysopogon nigritanus (Benth.) Veldkamp .

- **pénzà** . "tall, clumpy grass sp.".



(CC) BY © Jeff Heath and the Dogon and Bangime Languages Project



(CC) BY © Jeff Heath and the Dogon and Bangime Languages Project



(CC) BY © Jeff Heath and the Dogon and Bangime Languages Project

[Cymbopogon caesius giganteus](#) .

- èzú-kòlò . "giant lemon grass sp.". Lit. "waterjar-..."



(CC) BY © Jeff Heath and the Dogon and Bangime
Languages Project



(CC) BY © Jeff Heath and the Dogon and Bangime
Languages Project



(CC) BY © Jeff Heath and the Dogon and Bangime
Languages Project

[Cymbopogon schoenanthus](#) (L.) Spreng. .

- sámbùl . "lemon grass sp."



(CC) BY © Jeff Heath and the Dogon and Bangime
Languages Project



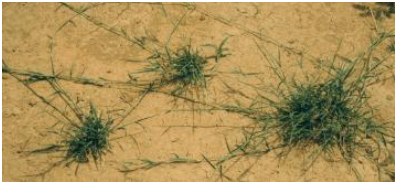
(CC) MARK © Jose Hernandez



(CC) BY-NC © Edinburgh!

[Cynodon dactylon](#) (L.) Pers. .

- bùlò-mà-tâ:ⁿ ~ -tâ:ⁿ . "couch grass (Bermuda grass)".



(CC) BY © Jeff Heath and the Dogon and Bangime Languages Project



(CC) BY © Jeff Heath and the Dogon and Bangime Languages Project



(CC) BY © Jeff Heath and the Dogon and Bangime Languages Project

[Diheteropogon hagerupii](#) Hitchc. .

- **tà:-dùlól** . "grass sp.". Lit. "hyena-tail".



(CC) BY © Jeff Heath and the Dogon and Bangime Languages Project



(CC) BY © Jeff Heath and the Dogon and Bangime Languages Project



(CC) BY © Jeff Heath and the Dogon and Bangime Languages Project

[Echinochloa colona](#) (L.) Link .

- **sà:-yú:** . "grass sp."



(CC) BY © Jeff Heath and the Dogon and Bangime Languages Project



(CC) BY © Jeff Heath and the Dogon and Bangime Languages Project



(CC) BY © Jeff Heath and the Dogon and Bangime Languages Project

[Enteropogon prieurii](#) (Kunth) Clayton .

- ǐzil . "grass sp.". Lit. "broom".



(CC) BY © Jeff Heath and the Dogon and Bangime
Languages Project



(CC) BY © Jeff Heath and the Dogon and Bangime
Languages Project



(CC) BY © Jeff Heath and the Dogon and Bangime
Languages Project

[Eragrostis tremula](#) Hochst. ex Steud. .

- ʔəwà: pílè . "grass sp.". Lit. "grass white".



(CC) BY © Jeff Heath and the Dogon and Bangime
Languages Project



(CC) BY © Jeff Heath and the Dogon and Bangime
Languages Project



(CC) BY © Jeff Heath and the Dogon and Bangime
Languages Project

[Oryza](#) .

- ádùcìnà . "wild rice".



(CC) BY-SA ©



(CC) BY-SA ©



(CC) MARK © Dr. David Gealy, USDA ARS, Research
Plant Physiologist

Oxytenanthera abyssinica (A.Rich.) Munro .

- pà:ⁿ . "bamboo".



(CC) BY-NC-SA © Research Institute Senckenberg



(CC) BY-NC-SA © Research Institute Senckenberg



(CC) BY © Jeff Heath and the Dogon and Bangime Languages Project

Panicum laetum Kunth .

- sà:-yú: . "wild fonio (grass)".



(CC) BY © Jeff Heath and the Dogon and Bangime Languages Project



(CC) BY-NC-SA © Missouri BG!



(CC) BY © Jeff Heath and the Dogon and Bangime Languages Project

Pennisetum pedicellatum Trin. .

- sà:ⁿàpùn . "grass sp.".



(CC) BY-NC-SA © Research Institute Senckenberg



(CC) BY © Jeff Heath and the Dogon and Bangime Languages Project



(CC) BY © Jeff Heath and the Dogon and Bangime Languages Project

[Schoenefeldia gracilis](#) Kunth .

- **ĩzil** . "grass sp.". Lit. "broom".



(CC) BY-NC-SA © Research Institute Senckenberg



(CC) BY-NC-SA © Research Institute Senckenberg



(CC) BY © Jeff Heath and the Dogon and Bangime Languages Project

[Sorghum arundinaceum](#) (Desv.) Stapf .

- **èmà sálálá** . "grass sp.". Lit. "sorghum false".



(CC) BY-NC © Petra Ballings



(CC) BY-NC © Petra Ballings



(CC) BY © Jeff Heath and the Dogon and Bangime Languages Project

[Sporobolus festivus](#) Hochst. ex A.Rich. .

- bàgòlò-ṙàwà: . "grass sp."



(CC) BY-NC © Sune Holt



(CC) BY-NC © Sune Holt



(CC) BY-NC © Sune Holt

Class: Magnoliopsida

Order: Asterales

Family: Asteraceae

[Acanthospermum hispidum](#) .

- zàṙkàbù-cébbè . "prickly herb sp.". Lit. "Diankabou.village-...".



(CC) BY © Jeff Heath and the Dogon and Bangime
Languages Project



(CC) BY © Jeff Heath and the Dogon and Bangime
Languages Project

[Blumea axillaris](#) .

- tàbà-gùnò . "herb sp."



(CC) BY © Jeff Heath and the Dogon and Bangime
Languages Project



(CC) BY © Jeff Heath and the Dogon and Bangime
Languages Project



(CC) BY © Jeff Heath and the Dogon and Bangime
Languages Project

[Kleinia cliffordiana](#) .

- tú-tùmúlò . "bush sp."



(CC) BY © Jeff Heath and the Dogon and Bangime
Languages Project



(CC) BY © Jeff Heath and the Dogon and Bangime
Languages Project



(CC) BY © Jeff Heath and the Dogon and Bangime
Languages Project

Order: Brassicales

Family: Capparaceae

[Boscia senegalensis](#) Lam. .

- è:rè . "shrub sp."



(CC) BY © Jeff Heath and the Dogon and Bangime
Languages Project



(CC) BY © Jeff Heath and the Dogon and Bangime
Languages Project



(CC) BY © Jeff Heath and the Dogon and Bangime
Languages Project

[Maerua crassifolia](#) Forssk. .

- **jìmpè:**ⁿ . "tree sp."



(CC) BY © Jeff Heath and the Dogon and Bangime
Languages Project



(CC) BY © Jeff Heath and the Dogon and Bangime
Languages Project



(CC) BY © Jeff Heath and the Dogon and Bangime
Languages Project

Family: Cleomaceae

[Arivela viscosa](#) .

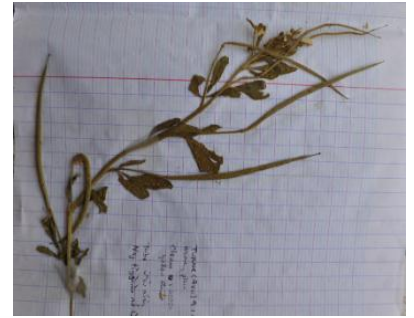
- **kà:pál** . "herb sp."



(CC) BY © Jeff Heath and the Dogon and Bangime
Languages Project



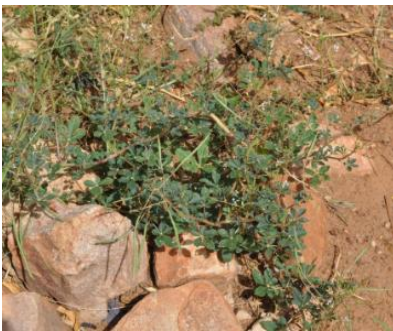
(CC) BY © Jeff Heath and the Dogon and Bangime
Languages Project



(CC) BY © Jeff Heath and the Dogon and Bangime
Languages Project

[Gynandropsis gynandra](#) L. . Characteristics: annual herb; palmately compound leaves; white flowers; fruit is an elongated capsule on a long stalk. Biotope: dry river course, mountains. ([Van Rooyen et al. 2001](#): 164; [Burke 2007](#): 80)

- ògò-bèlà . "herb sp."



(CC) BY © Jeff Heath and the Dogon and Bangime
Languages Project



(CC) BY © Forest & Kim Starr

Order: Caryophyllales

Family: Amaranthaceae

[Achyranthes aspera sicula](#) .

- àntùmùlù-cèm . "herb sp.". Lit. "dwarf-point".



(CC) BY © Jeff Heath and the Dogon and Bangime
Languages Project



(CC) BY © Jeff Heath and the Dogon and Bangime
Languages Project



(CC) BY © Jeff Heath and the Dogon and Bangime
Languages Project

Family: Portulacaceae

[Portulaca oleracea](#) L. .

- **pùli-yè-mú zǐ:rù** . "purslane (weed)".



(CC) BY © Jeff Heath and the Dogon and Bangime
Languages Project



(CC) BY © Forest & Kim Starr



(CC) BY © Jeff Heath and the Dogon and Bangime
Languages Project

Order: Cucurbitales

Family: Cucurbitaceae

[Citrullus lanatus](#) (Thunb.) Matsumura & Nakai . Characteristics: annual, creeping herb; the hairy leaves are divided into 3-5 lobes; male and female flowers grow on the same plant and are yellow; the fruit is round with a diameter of 15-20 cm and a yellow and green surface. Biotope: sandy soil, dune. ([Van der Walt and le Riche 1999](#): 110; [Van Rooyen et al. 2001](#): 148)

- **zògò** . "watermelon (cultivated, eaten raw)".
- **ùndûn-dú:rù** . "watermelon variety (cooked as a vegetable)".
- **zògò** . "watermelon (cultivated, all forms)".



(CC) BY © Jeff Heath and the Dogon and Bangime
Languages Project



Public Domain by Christfried Naumann

Coccinia grandis (L.) Voigt .

- **cènjà-mú kàmbè** . "wild melon sp. (cucumber shape)". Lit. "agamas' zaban".



(CC) BY © Jeff Heath and the Dogon and Bangime
Languages Project



(CC) BY © Jeff Heath and the Dogon and Bangime
Languages Project



(CC) BY © Jeff Heath and the Dogon and Bangime
Languages Project

Order: Ericales

Family: Ebenaceae

Diospyros mespiliformis Hochst. ex A.DC. .

- **àgùl** . "tree sp".



(CC) BY © Jeff Heath and the Dogon and Bangime Languages Project



(CC) BY © Jeff Heath and the Dogon and Bangime Languages Project



(CC) BY © Jeff Heath and the Dogon and Bangime Languages Project

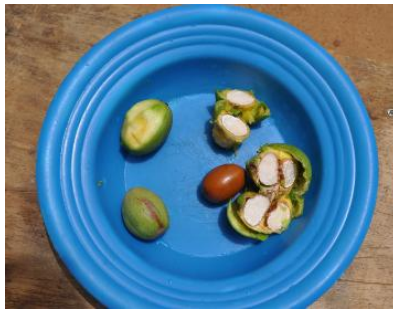
Family: Sapotaceae

[Vitellaria paradoxa paradoxa](#) .

- mīnzù . "karité (tree)".



(CC) BY © Jeff Heath and the Dogon and Bangime Languages Project



(CC) BY © Jeff Heath and the Dogon and Bangime Languages Project



(CC) BY © Jeff Heath and the Dogon and Bangime Languages Project

Order: Fabales

Family: Fabaceae

[Abrus precatorius](#) L. .

- [àmà-kàⁿkàⁿ] - [jīd-īyè] . "herb with hard red-and-black berries".



(CC) BY © Jeff Heath and the Dogon and Bangime Languages Project



(CC) BY © Jeff Heath and the Dogon and Bangime Languages Project

[Acacia senegal](#) (L.)Willd. .

- **kò-kòdù** . "gum tree (acacia)".



(CC) BY © Jeff Heath and the Dogon and Bangime Languages Project



(CC) BY © Jeff Heath and the Dogon and Bangime Languages Project

[Acacia seyal](#) Delile .

- **sèhè pílè** . "acacia sp.".



(CC) BY © Jeff Heath and the Dogon and Bangime Languages Project



(CC) BY © Jeff Heath and the Dogon and Bangime Languages Project

Acacia tortilis (Forssk.)Hayne .

- **bíšim** . "acacia sp."



(CC) BY © Jeff Heath and the Dogon and Bangime Languages Project



(CC) BY © Jeff Heath and the Dogon and Bangime Languages Project

Aeschynomene indica L. .

- **pédím-gápè** . "tall herb sp."



(CC) BY © Jeff Heath and the Dogon and Bangime Languages Project



(CC) BY © Jeff Heath and the Dogon and Bangime Languages Project



(CC) BY © Jeff Heath and the Dogon and Bangime Languages Project

Albizia chevalieri Harms .

- **cílà** . "tree sp."



(CC) BY © Jeff Heath and the Dogon and Bangime Languages Project



(CC) BY © Jeff Heath and the Dogon and Bangime Languages Project



(CC) BY © Jeff Heath and the Dogon and Bangime Languages Project

Alysicarpus ovalifolius (Schum.)Leonard .

- bèl-kámè . "herb sp."



(CC) BY © Jeff Heath and the Dogon and Bangime
Languages Project



(CC) BY © Jeff Heath and the Dogon and Bangime
Languages Project



(CC) BY © Jeff Heath and the Dogon and Bangime
Languages Project

Bauhinia reticulata DC. .

- kòlmbà . "tree sp."



(CC) BY © Jeff Heath and the Dogon and Bangime
Languages Project



(CC) BY © Jeff Heath and the Dogon and Bangime
Languages Project



(CC) BY © Jeff Heath and the Dogon and Bangime
Languages Project

Bauhinia rufescens Lam. .

- sàtèlíyè . "tree sp."



(CC) BY © Jeff Heath and the Dogon and Bangime
Languages Project



(CC) BY © Jeff Heath and the Dogon and Bangime
Languages Project



(CC) BY © Jeff Heath and the Dogon and Bangime
Languages Project

[Cassia sieberiana](#) DC. .

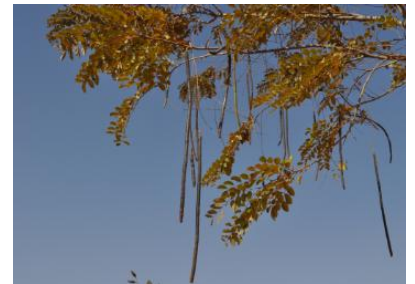
- cěyⁿ-căyⁿ . "tree sp."



(CC) BY © Jeff Heath and the Dogon and Bangime
Languages Project



(CC) BY © Jeff Heath and the Dogon and Bangime
Languages Project



(CC) BY © Jeff Heath and the Dogon and Bangime
Languages Project

[Chamaecrista absus](#) (L.)H.S.Irwin & Barneby .

- [àrⁿà-kùm] -kàṅálà . "bush sp.". Lit. "bachelor-Cassia".



(CC) BY © Jeff Heath and the Dogon and Bangime
Languages Project



(CC) BY © Jeff Heath and the Dogon and Bangime
Languages Project



(CC) BY © Jeff Heath and the Dogon and Bangime
Languages Project

[Chamaecrista mimosoides](#) (L.)Greene .

- cèm kúsà . "herb sp."



(CC) BY © Jeff Heath and the Dogon and Bangime
Languages Project



(CC) BY © Jeff Heath and the Dogon and Bangime
Languages Project

[Chamaecrista nigricans](#) (Vahl)Greene .

- àzàpèl . "herb sp."
- àzàfèl . "herb sp."



(CC) BY © Jeff Heath and the Dogon and Bangime
Languages Project



(CC) BY © Jeff Heath and the Dogon and Bangime
Languages Project



(CC) BY © Jeff Heath and the Dogon and Bangime
Languages Project

[Crotalaria podocarpa](#) DC. . Characteristics: annual herb with spreading stems; up to 3 cm tall; trifoliate leaves; pale yellow flowers; fruit is an inflated pod with stiff hair. Biotope: sandy soil. ([Van Rooyen et al. 2001](#): 130)

- gà:"-égèlè . "herb sp.". Lit. "cat-peanut".



(CC) BY © Jeff Heath and the Dogon and Bangime
Languages Project



(CC) BY © Jeff Heath and the Dogon and Bangime
Languages Project



(CC) BY © Jeff Heath and the Dogon and Bangime
Languages Project

[Dalbergia melanoxylon](#) Guill. & Perr. .

- zàṅà . "tree sp.".



(CC) BY © Jeff Heath and the Dogon and Bangime
Languages Project



(CC) BY © Jeff Heath and the Dogon and Bangime
Languages Project



(CC) BY © Jeff Heath and the Dogon and Bangime
Languages Project

[Daniellia oliveri](#) (Rolfe)Hutch. & Dalziel .

- cèzà . "tree sp.".



(CC) BY © Jeff Heath and the Dogon and Bangime
Languages Project



(CC) BY © Jeff Heath and the Dogon and Bangime
Languages Project



(CC) BY © Jeff Heath and the Dogon and Bangime
Languages Project

Detarium microcarpum Guill. & Perr. .

- **pòndù** . "tree sp."



(CC) BY © Jeff Heath and the Dogon and Bangime
Languages Project



(CC) BY-NC-SA © Research Institute Senckenberg



(CC) BY © Jeff Heath and the Dogon and Bangime
Languages Project

Faidherbia albida (Delile)A.Chev. .

- **sé:ndé** . "balanzan tree".



(CC) BY-NC © Bart Wursten



(CC) BY-NC-SA © Research Institute Senckenberg



(CC) BY-NC © Bart Wursten

[Parkia biglobosa](#) (Jacq.)G.Don .

- **lòl** . "locust-bean (nééré) tree".



(CC) BY-NC-SA © Research Institute Senckenberg



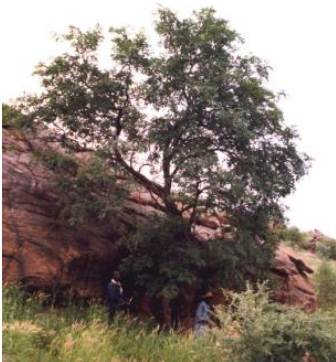
(CC) BY-NC-SA © Research Institute Senckenberg



(CC) BY-SA ©

[Pterocarpus erinaceus](#) Poir. .

- **wày"à** . "tree sp".



(CC) BY © Jeff Heath and the Dogon and Bangime Languages Project



(CC) BY © Jeff Heath and the Dogon and Bangime Languages Project



(CC) BY © Jeff Heath and the Dogon and Bangime Languages Project

[Pterocarpus lucens](#) Guill. & Perr. .

- **bèbèlè** . "tree sp".



(CC) BY-NC-SA © Research Institute Senckenberg



(CC) BY-NC-SA © Research Institute Senckenberg



(CC) BY © Jeff Heath and the Dogon and Bangime Languages Project

Senna obtusifolia (L.)H.S.Irwin & Barneby .

- kàŋálà . "herb sp."



(CC) BY © Jeff Heath and the Dogon and Bangime Languages Project



(CC) PUBLICDOMAIN © Michael Kesi



(CC) BY © Jeff Heath and the Dogon and Bangime Languages Project

Senna occidentalis (L.)Link .

- [àr"à-kùm]-kàŋálà . "bush sp.". Lit. "bachelor-Cassia".



(CC) BY-NC © Bart Wursten



(CC) BY © John Tann



Public Domain by

[Tamarindus indica](#) L. .

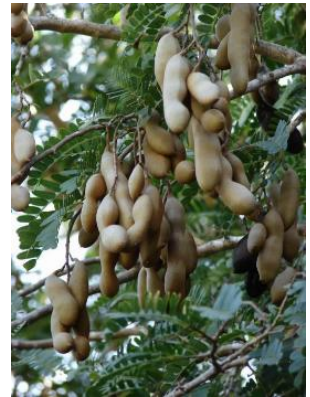
- ómòl . "tamarind".



(CC) BY © Jeff Heath and the Dogon and Bangime
Languages Project



(CC) BY © Jeff Heath and the Dogon and Bangime
Languages Project



(CC) BY © Forest & Kim Starr

[Vachellia nilotica](#) .

- bã:là . "acacia sp.".



(CC) BY © Jeff Heath and the Dogon and Bangime
Languages Project



(CC) BY © Jeff Heath and the Dogon and Bangime
Languages Project



(CC) BY © Jeff Heath and the Dogon and Bangime
Languages Project

[Zornia glochidiata](#) DC. .

- dègúmbèrè . "herb sp.". From Ful .



(CC) BY-NC © Bart Wursten



(CC) BY-NC © Bart Wursten



(CC) BY-NC © Bart Wursten

Order: Gentianales

Family: Apocynaceae

[Calotropis procera](#) .

- pùmbùm . "shrub sp."



(CC) BY © Jeff Heath and the Dogon and Bangime
Languages Project



(CC) BY © Jeff Heath and the Dogon and Bangime
Languages Project

[Saba senegalensis](#) (A. DC.) Pichon .

- kàmbe . "zaban (woody liana)".



(CC) BY-NC-SA © Research Institute Senckenberg



(CC) BY © Jeff Heath and the Dogon and Bangime Languages Project



(CC) BY-NC-SA © Research Institute Senckenberg

Family: Rubiaceae

Feretia apodanthera Delile .

- **zĩnd-iyè** . "shrub sp."



(CC) BY © Jeff Heath and the Dogon and Bangime Languages Project



(CC) BY © Jeff Heath and the Dogon and Bangime Languages Project

Gardenia ternifolia Schumach. & Thonn. .

- **jĩnũm ~ jĩnĩm** . "shrub sp."



(CC) BY © Jeff Heath and the Dogon and Bangime Languages Project



(CC) BY © Jeff Heath and the Dogon and Bangime Languages Project



(CC) BY © Jeff Heath and the Dogon and Bangime Languages Project

Mitracarpus hirtus (L.) DC. .

- **sùn-ʔəwà:** . "herb sp."



(CC) BY © Jeff Heath and the Dogon and Bangime
Languages Project



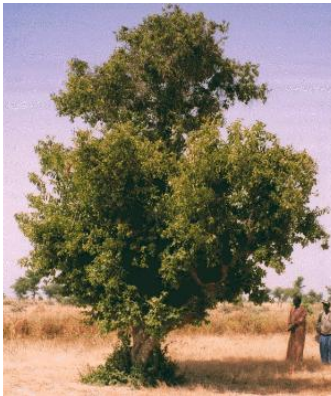
(CC) BY © Jeff Heath and the Dogon and Bangime
Languages Project



(CC) BY © Jeff Heath and the Dogon and Bangime
Languages Project

Mitragyna inermis (Willd.) Kuntze .

- **bùdò** . "tree sp."



(CC) BY © Jeff Heath and the Dogon and Bangime
Languages Project



(CC) BY © Jeff Heath and the Dogon and Bangime
Languages Project



(CC) BY © Jeff Heath and the Dogon and Bangime
Languages Project

Oldenlandia corymbosa L. .

- **tím̄tīm̄** . "herb sp."



(CC) BY © Forest & Kim Starr



(CC) BY-NC-SA © Research Institute Senckenberg



(CC) BY © Forest & Kim Starr

Sarcocephalus latifolius Sm. .

- **b̃ncèndè** . "tree sp."



(CC) BY-NC-SA © Research Institute Senckenberg



(CC) BY-NC-SA © Research Institute Senckenberg



(CC) BY © Jeff Heath and the Dogon and Bangime Languages Project

Spermacoce .

- **sé-sènzé** . "herb sp."



(CC) BY © Forest & Kim Starr



(CC) BY-NC-SA © Jason Sharp

Order: Lamiales

Family: Acanthaceae

[Hygrophila auriculata](#) (Hamilt.) M.R. Almeida & S.M. Almeida .

- èdè-mú zòyè . "herb sp.". Lit. "chickens' thorn".



(CC) BY © Jeff Heath and the Dogon and Bangime
Languages Project



(CC) BY © Jeff Heath and the Dogon and Bangime
Languages Project



(CC) BY © Jeff Heath and the Dogon and Bangime
Languages Project

Family: Lamiaceae

[Hyptis spicigera](#) (Aubl.) Harley & J.F.B.Pastore .

- dùlmà-jǐnè . "herb sp.".



(CC) BY © Jeff Heath and the Dogon and Bangime
Languages Project



(CC) BY © Jeff Heath and the Dogon and Bangime
Languages Project



(CC) BY-NC-SA © Research Institute Senckenberg

Family: Orobanchaceae

[Striga hermonthica](#) (Del.) Benth. .

- dǒy . "herb sp.".



(CC) BY-NC-SA © Research Institute Senckenberg



(CC) BY-NC-SA © Research Institute Senckenberg



(CC) BY-NC-SA © Delile, A.R., 1813. Description de l'Egypte

Family: Pedaliaceae

[Ceratotheca sesamoides](#) Endl. .

- pàl-gùnò . "herb sp.". Lit. "sesame-slave".



(CC) BY © Jeff Heath and the Dogon and Bangime Languages Project



(CC) BY © Jeff Heath and the Dogon and Bangime Languages Project



(CC) BY © Jeff Heath and the Dogon and Bangime Languages Project

[Sesamum alatum](#) P. Thonn. .

- pàl-gùnò . "wild sesame (herb)". Lit. "sesame-slave".



(CC) BY-NC © Bart Wursten



(CC) BY-NC © Bart Wursten



(CC) BY-NC © Bart Wursten

[Sesamum indicum](#) .

- pàl . "sesame".



(CC) BY-NC-SA © Research Institute Senckenberg



(CC) BY-NC-SA © Research Institute Senckenberg



(CC) MARK © Franz Eugen Köhler, Köhler's
Medizinal-Pflanzen

Family: Plantaginaceae

[Scoparia dulcis](#) L. .

- tím-tím . "herb sp.".



(CC) BY © India Biodiversity Portal



(CC) BY-NC-SA © Research Institute Senckenberg



(CC) BY-SA ©

Order: Magnoliales

Family: Annonaceae

[Hexalobus monopetalus](#) (A. Rich.) Engl. & Diels .

- àr"à-gùmzò . "tree sp."



(CC) BY © Jeff Heath and the Dogon and Bangime
Languages Project



(CC) BY © Jeff Heath and the Dogon and Bangime
Languages Project



(CC) BY © Jeff Heath and the Dogon and Bangime
Languages Project

Order: Malpighiales

Family: Euphorbiaceae

[Euphorbia balsamifera](#) Aiton .

- jizà . "balsam-spurge (shrub)".



(CC) BY © Jeff Heath and the Dogon and Bangime
Languages Project



(CC) BY © Jeff Heath and the Dogon and Bangime
Languages Project



(CC) BY-NC © Edinburgh!

[Euphorbia chapmanii](#) Oudejans .

- tépù . "thorny bush".

[Euphorbia hirta](#) L. .

- àmà-émè-ñjù . "erect herb sp."



(CC) BY © Jeff Heath and the Dogon and Bangime Languages Project



(CC) BY © Jeff Heath and the Dogon and Bangime Languages Project



(CC) BY © India Biodiversity Portal

[Ricinus communis](#) L. .

- pémbè . "shrub sp."



(CC) BY-SA © Andreas Früh (Andel)



(CC) BY-SA © H. Zell



(CC) BY © Jeff Heath and the Dogon and Bangime Languages Project

Order: Malvales

Family: Malvaceae

[Adansonia digitata](#) L. .

- ðdò . "baobab tree".
- àpùndùl . "baobab tree".



Public Domain by unknown



(CC) BY © Jeff Heath and the Dogon and Bangime
Languages Project



(CC) BY © Jeff Heath and the Dogon and Bangime
Languages Project

[Ceiba pentandra](#) (L.) Gaertn. .

- **dùnù** . "tree sp."



(CC) BY © Jeff Heath and the Dogon and Bangime
Languages Project



(CC) BY-NC-SA © Reinaldo Aguilar

[Cola cordifolia](#) (Cav.) R. Br. .

- **cènè** . "tree sp."



(CC) BY © Jeff Heath and the Dogon and Bangime
Languages Project



(CC) BY © Jeff Heath and the Dogon and Bangime
Languages Project



(CC) BY © Jeff Heath and the Dogon and Bangime
Languages Project

[Cola laurifolia](#) Mast. .

- **sénzà** . "tree sp."



(CC) BY © Jeff Heath and the Dogon and Bangime Languages Project



(CC) BY © Jeff Heath and the Dogon and Bangime Languages Project



(CC) BY © Jeff Heath and the Dogon and Bangime Languages Project

[Corchorus tridens](#) L. .

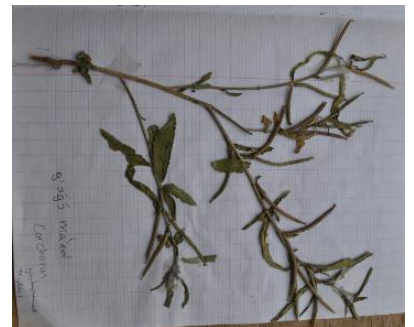
- **ànzùkùmà-dón** . "herb sp."



(CC) BY © Jeff Heath and the Dogon and Bangime Languages Project



(CC) BY-NC © BT Wursten



(CC) BY © Jeff Heath and the Dogon and Bangime Languages Project

[Hibiscus cannabinus](#) L. .

- **àjù-nâ:** . "erect herb sp."



(CC) BY © Jeff Heath and the Dogon and Bangime
Languages Project



(CC) BY © Jeff Heath and the Dogon and Bangime
Languages Project



(CC) BY © Jeff Heath and the Dogon and Bangime
Languages Project

Hibiscus longisepalus Hochr. .

- **yà:dù-kùmà** . "bush sp."



(CC) BY © Jeff Heath and the Dogon and Bangime
Languages Project



(CC) BY © Jeff Heath and the Dogon and Bangime
Languages Project



(CC) BY © Jeff Heath and the Dogon and Bangime
Languages Project

Hibiscus ovalifolius (Forssk.) Vahl .

- **sũy** . "bush sp."



(CC) BY © Jeff Heath and the Dogon and Bangime
Languages Project



(CC) BY © Jeff Heath and the Dogon and Bangime
Languages Project

[Waltheria indica](#) L. .

- **gòlò nà-ámlè** . "bush sp.". Lit. "fire's in.law".



(CC) BY © Jeff Heath and the Dogon and Bangime
Languages Project



(CC) BY © Jeff Heath and the Dogon and Bangime
Languages Project



(CC) BY © Jeff Heath and the Dogon and Bangime
Languages Project

Order: Myrtales

Family: Lythraceae

[Lawsonia inermis](#) L. .

- **jàbí** . "henna bush".
- **púdù** . "henna bush".



(CC) BY © Jeff Heath and the Dogon and Bangime
Languages Project

Family: Myrtaceae

[Eucalyptus astringens](#) (Maiden) Maiden .

- **s̄inwâ:** ~ **s̄inwâ:r** . "eucalyptus tree".

[Psidium guajava](#) .

- **bùyàgù** . "guava".



(CC) BY ©



(CC) BY © Forest & Kim Starr



(CC) MARK © Galapagos Islands.

Order: Nymphaeales

Family: Nymphaeaceae

[Nymphaea](#) .

- **kùn** . "water lily (all spp.)".



(CC) BY-NC-SA © Mary Keim



(CC) BY-NC-SA © Research Institute Senckenberg



(CC) BY-NC © Bart Wursten

Order: Rosales

Family: Moraceae

[Ficus sycomorus](#) .

- **gàm pîlè** . "fig tree sp.". Lit. "sycomore.fig white".



(CC) BY © Jeff Heath and the Dogon and Bangime Languages Project



(CC) BY © Jeff Heath and the Dogon and Bangime Languages Project



(CC) BY © Jeff Heath and the Dogon and Bangime Languages Project

Family: Rhamnaceae

[Ziziphus mauritiana](#) Lam. .

- **èlèm** . "jujube (shrub)".



(CC) BY-SA ©



(CC) BY © Jeff Heath and the Dogon and Bangime Languages Project



(CC) BY-NC © Bart Wursten

Order: Santalales

Family: Ximeniaceae

[Ximenia americana](#) L. .

- òmòlò-bàní: . "thorny shrub sp."



(CC) BY-NC-SA © Research Institute Senckenberg



(CC) BY © Jeff Heath and the Dogon and Bangime Languages Project



(CC) BY © Jeff Heath and the Dogon and Bangime Languages Project

Order: Sapindales

Family: Anacardiaceae

[Anacardium occidentale](#) L. .

- sòmò . "cashew tree (planted)".



(CC) BY © Jeff Heath and the Dogon and Bangime Languages Project

[Mangifera indica](#) L. .

- **máŋgòrò** . "mango".



(CC) BY-NC-SA © Research Institute Senckenberg



(CC) BY © Jeff Heath and the Dogon and Bangime Languages Project



(CC) BY-SA ©

[Sclerocarya birrea](#) .

- **bĩ:ⁿ** . "tree sp.".



(CC) BY © Jeff Heath and the Dogon and Bangime Languages Project



(CC) BY-NC-SA © Research Institute Senckenberg



(CC) BY © Jeff Heath and the Dogon and Bangime Languages Project

[Spondias mombin](#) Jacq. .

- **è:rⁿè** . "tree sp.".



(CC) BY © Jeff Heath and the Dogon and Bangime
Languages Project



(CC) BY-NC-SA © Research Institute Senckenberg

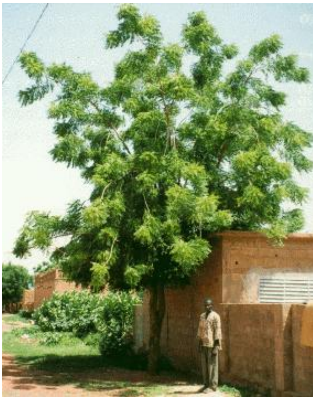


(CC) BY © Jeff Heath and the Dogon and Bangime
Languages Project

Family: Meliaceae

[Azadirachta indica](#) A. Juss. .

- **gòg-iyè** . "neem tree".



(CC) BY © Jeff Heath and the Dogon and Bangime
Languages Project



(CC) BY © Jeff Heath and the Dogon and Bangime
Languages Project

[Khaya senegalensis](#) (Desv.) A. Juss. .

- **pèlèŋ** . "tree sp".



(CC) BY © Jeff Heath and the Dogon and Bangime
Languages Project



(CC) BY-NC-SA © Research Institute Senckenberg



(CC) BY © Jeff Heath and the Dogon and Bangime
Languages Project

Family: Rutaceae

[*Vepris heterophylla*](#) (Engl.) Letouzey .

- pòndù-kògò . "kinkeliba shrub".



(CC) BY-NC © Philippe Birnbaum



(CC) BY-NC © Philippe Birnbaum



(CC) BY-NC © Philippe Birnbaum

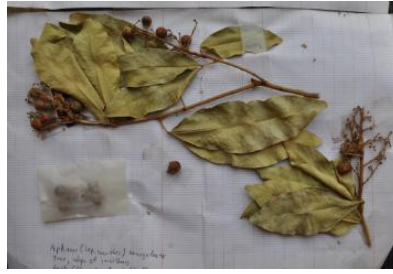
Family: Sapindaceae

[*Lepisanthes senegalensis*](#) (Poir.) Leenhouts .

- dènè . "tree sp. "



(CC) BY © Jeff Heath and the Dogon and Bangime
Languages Project



(CC) BY © Jeff Heath and the Dogon and Bangime
Languages Project



(CC) BY © Jeff Heath and the Dogon and Bangime
Languages Project

Order: Solanales

Family: Convolvulaceae

[*Ipomoea asarifolia*](#) (Desr.) Roem. & Schult. .

- **nòmò-bèl** . "trailing vine sp.". Lit. "rainbow-grass".



(CC) BY © Jeff Heath and the Dogon and Bangime
Languages Project



(CC) BY-NC-SA © Research Institute Senckenberg



(CC) BY © Jeff Heath and the Dogon and Bangime
Languages Project

[*Ipomoea coptica*](#) (L.) Roth .

- **pèndù-nâ** . "trailing vine sp.". Lit. "gecko-foot".



(CC) BY © Jeff Heath and the Dogon and Bangime
Languages Project



(CC) BY © Jeff Heath and the Dogon and Bangime
Languages Project



(CC) BY © Jeff Heath and the Dogon and Bangime
Languages Project

Family: Solanaceae

[Physalis angulata](#) L. .

- èné sàptèrè . "herb sp.". Lit. "child's chili.pepper".



(CC) BY © Jeff Heath and the Dogon and Bangime
Languages Project



Public Domain by flaksbaum



(CC) BY-SA © W.A. Djatmiko

[Solanum incanum](#) L. . Characteristics: shrub, 80cm tall, many branches that are covered with hairs and spines, large lobed leaves, purplish-white flowers, fruit turns from green to yellow when ripe. Biotope: dry river course. ([Van Rooyen et al. 2001](#): 76)

- tà:-célbà . "thorny bush sp.". Lit. "hyena-eggplant".



(CC) BY © Jeff Heath and the Dogon and Bangime Languages Project



(CC) BY-NC © Bart Wursten



(CC) BY © Jeff Heath and the Dogon and Bangime Languages Project

Order: Vitales

Family: Vitaceae

[Cissus quadrangularis](#) L. .

- ðbó-ză:là . "liana sp."



(CC) BY-SA © Marco Schmidt



(CC) BY © Jeff Heath and the Dogon and Bangime Languages Project



(CC) BY © Jeff Heath and the Dogon and Bangime Languages Project

Order: Zygophyllales

Family: Zygophyllaceae

[Balanites aegyptiacus](#) .

- m̀̀l̀̀ . "wild date tree".



(CC) BY © Jeff Heath and the Dogon and Bangime
Languages Project



(CC) BY © Jeff Heath and the Dogon and Bangime
Languages Project



(CC) BY © Jeff Heath and the Dogon and Bangime
Languages Project

[*Tribulus terrestris*](#) L. . Characteristics: creeping growth, yellow flowers, flower 1 cm in diameter, soft-haired leaves, woody, sharp, spiny fruits that can puncture animals' hoofs, bare feet and bicycle tyres. ([Van der Walt and le Riche 1999](#): 109)

- [nà-nàmà] -zòyè . "herb sp."



(CC) BY © Jeff Heath and the Dogon and Bangime
Languages Project



(CC) BY-SA © Stan Shebs



(CC) BY-SA © Stan Shebs

Class: other

Order: Ranunculales

Family: Menispermaceae

[*Tinospora bakis*](#) (A.Rich.) Miers .

- gùrⁿò . "woody liana sp."



(CC) BY © Jeff Heath and the Dogon and Bangime Languages Project



(CC) BY © Jeff Heath and the Dogon and Bangime Languages Project



(CC) BY © Jeff Heath and the Dogon and Bangime Languages Project

Kingdom: Viridiplantae

Phylum: Streptophyta

Class: Magnoliopsida

Order: Brassicales

Family: Capparaceae

[Boscia angustifolia](#) A. Rich. .

- *símpàliyè* . "tree sp."



(CC) BY © Jeff Heath and the Dogon and Bangime Languages Project



(CC) BY © Jeff Heath and the Dogon and Bangime Languages Project



(CC) BY © Jeff Heath and the Dogon and Bangime Languages Project

[Boscia salicifolia](#) Oliv. .

- *yàṅà-lùlò* . "tree sp."



(CC) BY © Jeff Heath and the Dogon and Bangime Languages Project



(CC) BY © Jeff Heath and the Dogon and Bangime Languages Project



(CC) BY © Jeff Heath and the Dogon and Bangime Languages Project

Maerua angolensis .

- **kó-kól** . "tree sp."



(CC) BY-NC © Bart Wursten



(CC) BY-NC © Bart Wursten



(CC) BY © Jeff Heath and the Dogon and Bangime Languages Project

Order: Caryophyllales

Family: Amaranthaceae

Pupalia lappacea (L.) Juss. . Characteristics: erect or sprawling herb; up to 90 cm tall; stems with multiple opposite branches that grow from nodes; branches are 4-angled; the mature inflorescence is up to 50 cm long and has green flowers; fruit is a capsule with shiny brown seeds. Biotope: sandy soil. ([Van Rooyen et al. 2001](#): 156)

- **áy-dòŋ-mà-dôŋ** . "herb sp."



(CC) BY-NC © Bart Wursten



(CC) BY-NC © Bart Wursten



Public Domain by Christfried Naumann

Order: Fabales

Family: Fabaceae

[Vachellia amythetophylla](#) .

- **lòl-gùnò** . "thorny tree sp.". Lit. "Parkia-slave".



(CC) BY © Jeff Heath and the Dogon and Bangime Languages Project



(CC) BY © Jeff Heath and the Dogon and Bangime Languages Project



(CC) BY © Jeff Heath and the Dogon and Bangime Languages Project

Order: Gentianales

Family: Apocynaceae

[Cynanchum viminale](#) .

- **kòlò-mám** . "vine sp.".



(CC) BY-NC-SA © Research Institute Senckenberg



(CC) BY-NC © Bart Wursten



(CC) BY-SA © Ton Rulkens

[Leptadenia hastata](#) .

- **kàmàkòlò** . "vine sp."



(CC) BY-NC-SA © Research Institute Senckenberg



(CC) BY © Jeff Heath and the Dogon and Bangime
Languages Project



(CC) BY © Jeff Heath and the Dogon and Bangime
Languages Project

[Leptadenia pyrotechnica](#) (Forssk.) Decne. .

- **kàràgà-bònnò** . "bush sp."



(CC) BY © Jeff Heath and the Dogon and Bangime
Languages Project



(CC) BY-NC-SA © Bibliotheca Alexandrina - EOL Ar



(CC) BY-SA ©

Pergularia tomentosa L. .

- pólýám . "bush sp."



(CC) BY © Jeff Heath and the Dogon and Bangime Languages Project



(CC) BY © Jeff Heath and the Dogon and Bangime Languages Project



(CC) BY © Jeff Heath and the Dogon and Bangime Languages Project

Xysmalobium heudelotianum N. E. Br. .

- yè-sèlè céjèmbèlè . "trailing vine sp.". Lit. "old.woman's ...".



(CC) BY-NC © Rob Burrett



(CC) BY-NC © Rob Burrett



(CC) BY © Jeff Heath and the Dogon and Bangime Languages Project

Order: Lamiales

Family: Bignoniaceae

Stereospermum kunthianum Cham. .

- pó-pòdólò . "tree sp."



(CC) BY-NC © Bart Wursten



(CC) BY-NC © Bart Wursten



(CC) BY © Jeff Heath and the Dogon and Bangime Languages Project

Family: Lamiaceae

[Vitex doniana](#) Sweet .

- mĩr"àm . "tree sp."



(CC) BY © Jeff Heath and the Dogon and Bangime Languages Project



(CC) BY-NC-SA © Research Institute Senckenberg



(CC) BY © Jeff Heath and the Dogon and Bangime Languages Project

Family: Pedaliaceae

[Rogeria adenophylla](#) .

- yùmùl-kùmbò . "tall herb sp."



(CC) BY © Jeff Heath and the Dogon and Bangime
Languages Project



(CC) BY © Jeff Heath and the Dogon and Bangime
Languages Project



(CC) BY © Jeff Heath and the Dogon and Bangime
Languages Project

Order: Malvales

Family: Malvaceae

[Abutilon glaucum](#) (Forst. f.) Schltld. .

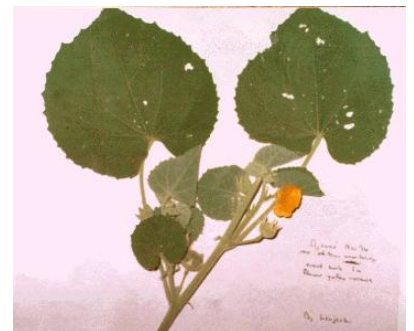
- [yà:dù-kùmà] -gùnò . "bush sp.". Lit. "hibiscus-slave".



(CC) BY © Jeff Heath and the Dogon and Bangime
Languages Project



(CC) BY © Jeff Heath and the Dogon and Bangime
Languages Project



(CC) BY © Jeff Heath and the Dogon and Bangime
Languages Project

[Grewia bicolor](#) Juss. .

- òbó-kàkázà . "shrub sp.". Lit. "fiber-...".



(CC) BY © Jeff Heath and the Dogon and Bangime Languages Project



(CC) BY © Jeff Heath and the Dogon and Bangime Languages Project



(CC) BY © Jeff Heath and the Dogon and Bangime Languages Project

Order: Myrtales

Family: Combretaceae

[Anogeissus leiocarpa](#) (DC.) Guill. & Perr. .

- **sīl-iyè** . "tree sp."



(CC) BY © Jeff Heath and the Dogon and Bangime Languages Project



(CC) BY © Jeff Heath and the Dogon and Bangime Languages Project



(CC) BY © Jeff Heath and the Dogon and Bangime Languages Project

[Combretum glutinosum](#) Perr. ex DC. .

- **bànàgà** . "tree sp."



(CC) BY © Jeff Heath and the Dogon and Bangime Languages Project



(CC) BY © Jeff Heath and the Dogon and Bangime Languages Project



(CC) BY © Jeff Heath and the Dogon and Bangime Languages Project

[Combretum micranthum](#) G. Don .

- **kùn** . "shrub sp."



(CC) BY © Jeff Heath and the Dogon and Bangime Languages Project



(CC) BY © Jeff Heath and the Dogon and Bangime Languages Project



(CC) BY © Jeff Heath and the Dogon and Bangime Languages Project

[Guiera senegalensis](#) J.F.Gmel. .

- **gùrù** . "shrub sp."



(CC) BY © Jeff Heath and the Dogon and Bangime Languages Project



(CC) BY © Jeff Heath and the Dogon and Bangime Languages Project



(CC) BY © Jeff Heath and the Dogon and Bangime Languages Project

Order: Piperales

Family: Aristolochiaceae

[*Aristolochia albida*](#) Duch. .

- **cènjà-mú kòdò** . "woody liana sp.". Lit. "agamas' calabash".



(CC) BY © Jeff Heath and the Dogon and Bangime Languages Project



(CC) BY © Jeff Heath and the Dogon and Bangime Languages Project

Order: Rosales

Family: Moraceae

[*Ficus abutilifolia*](#) (Miq.) Miq. .

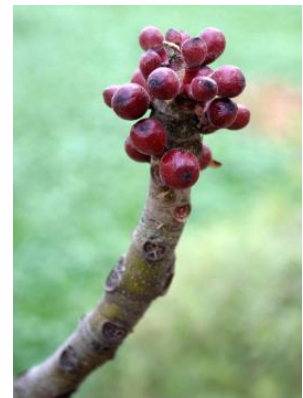
- **kùmbù pílè** . "fig tree sp.". Lit. "fig white".



(CC) BY © Jeff Heath and the Dogon and Bangime Languages Project



(CC) BY © Jeff Heath and the Dogon and Bangime Languages Project



(CC) BY-NC © Bart Wursten

[*Ficus platyphylla*](#) Del. .

- **kùmbù bǎn** . "fig tree sp.". Lit. "fig red".



(CC) BY © Jeff Heath and the Dogon and Bangime
Languages Project



(CC) BY © Jeff Heath and the Dogon and Bangime
Languages Project



(CC) BY © Jeff Heath and the Dogon and Bangime
Languages Project

[Ficus sur](#) Forssk. .

- **gàm kóndà** . "fig tree sp."



(CC) BY © Jeff Heath and the Dogon and Bangime
Languages Project



(CC) BY © Jeff Heath and the Dogon and Bangime
Languages Project



(CC) BY © Jeff Heath and the Dogon and Bangime
Languages Project

Family: Rhamnaceae

[Ziziphus mucronata](#) . Characteristics: 2 - 5 m tall, yellowish-green flowers, greyish-brown bark, thorns in pairs.
Biotope: river course, arid area. ([Carruthers \(eds.\) 2000](#): 263; [Van Rooyen et al. 2001](#): 34)

- **tà:-èlèm** . "shrub sp. (false jujube)". Lit. "hyena-jujube".



Public Domain by Christfried Naumann



(CC) BY-NC-SA © Research Institute Senckenberg



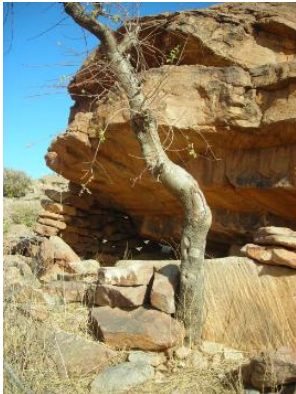
Public Domain by Gertrud Boden

Order: Sapindales

Family: Burseraceae

[Commiphora africana](#) (Rich.) Engl. .

- àntùmùlù-bĩ:" . "bdellium (shrub)". Lit. "dwarf-Sclerocarya".



(CC) BY © Jeff Heath and the Dogon and Bangime Languages Project



(CC) BY © Jeff Heath and the Dogon and Bangime Languages Project



(CC) BY © Jeff Heath and the Dogon and Bangime Languages Project

Order: Solanales

Family: Convolvulaceae

[Ipomoea dichroa](#) (Roem. et Schult.) Choisy .

- dǎgò-nínè . "liana sp.". Lit. "Dogon-nuisance".



(CC) BY © Jeff Heath and the Dogon and Bangime Languages Project



(CC) BY © Jeff Heath and the Dogon and Bangime Languages Project



(CC) BY © Jeff Heath and the Dogon and Bangime Languages Project

Order: Vitales

Family: Vitaceae

[Ampelocissus africana](#) (Lour.) Merrill .

- ʔóné-kìlè-mù kùdà . "liana sp.". Lit. "goatherds' wild.grape".



(CC) BY © Jeff Heath and the Dogon and Bangime Languages Project



(CC) BY © Jeff Heath and the Dogon and Bangime Languages Project



(CC) BY © Jeff Heath and the Dogon and Bangime Languages Project

Class: other

Order: Fabales

Family: Fabaceae

[Senegalia ataxacantha](#) .

- zòlòŋ jèmé . "scrub acacia sp. (often liana)".



(CC) BY © Jeff Heath and the Dogon and Bangime
Languages Project



(CC) BY © Jeff Heath and the Dogon and Bangime
Languages Project



(CC) BY © Jeff Heath and the Dogon and Bangime
Languages Project

[Vachellia sieberiana](#) .

- ùlyèm . "acacia sp.".



(CC) BY © Jeff Heath and the Dogon and Bangime
Languages Project



(CC) BY © Jeff Heath and the Dogon and Bangime
Languages Project



(CC) BY © Jeff Heath and the Dogon and Bangime
Languages Project

Kingdom: other

Phylum: other

Class: other

Order: other

Family: other

[Trachyderma hispida](#) .

- b̀̀r̀̀ . "darkling beetle sp. in houses".



(CC) BY © Jeff Heath and the Dogon and Bangime

Languages Project