

Lenexa's Stormwater Cost Share NATIVE PLANT GUIDE

Need advice on what is a native or which ones to use? We've got answers.



Recommended plants for rain gardens

Sunny rain garden palette

Obedient Plant	<i>Physostegia virginiana</i>
Greyheaded Coneflower	<i>Ratibida Pinnata</i>
Pale Purple Coneflower	<i>Echinacea pallida</i>
Foxglove Beardtongue	<i>Penstemon Digitalis</i>
Prairie Coreopsis	<i>Coreopsis Palmata</i>
Stiff Goldenrod	<i>Solidago rigida</i>
Prairie Blazing Star	<i>Liatris Pycnostachya</i>
Marsh Milkweed	<i>Asclepias Incarnata</i>
Switchgrass	<i>Panicum virgatum</i>
Canada Wild Rye	<i>Elymus canadensis</i>
Prairie Dropseed	<i>Sporobolus heterolepis</i>
Little Bluestem	<i>Schizachyrium scoparium</i>



Little Bluestem

Shady rain garden palette

Dwarf Crested Iris	<i>Iris cristata</i>
Columbine	<i>Aquilegia canadensis</i>
Cardinal Flower	<i>Lobelia Cardinalis</i>
Dutchman's Breeches	<i>Dicentra cucullaria</i>
Black-eyed Susan	<i>Rudbeckia hirta</i>
Golden Alexanders	<i>Zizia Aptera</i>
Rose Mallow	<i>Hibiscus militaris (laevis)</i>
Jack-in-the-Pulpit	<i>Arisaema triphullum</i>
Sensitive Fern	<i>Onodea senibilis</i>
Bottlebrush Grass	<i>Hystrix patula</i>
Maidenhair Fern	<i>Adiantum pedatum</i>
Early Meadow Rue	<i>Thadlictrum dioicum</i>



Golden Alexander

Recommended native plant list

American Beakgrass	<i>Diarrhena obovata</i>	Pale Purple Coneflower	<i>Echinacea pallida</i>
American Bellflower	<i>Campanula americana</i>	Partridge Pea	<i>Chamaecrista fasciculata</i>
Aromatic Aster	<i>Aster oblongifolius</i>	Philadelphia Fleabane	<i>Erigeron philadelphicus</i>
Black Eyed Susan	<i>Rudbeckia hirta</i>	Pitcher's Leather Flower	<i>Clematis pitcheri</i>
Blue Phlox	<i>Phlox divaricata</i>	Plains Larkspur	<i>Delphinium virescens</i>
Blue Sage	<i>Salvia azurea</i>	Prairie Blazing Star	<i>Liatris pycnostachya</i>
Bottlebrush Grass	<i>Hystrix patula</i>	Prairie Coneflower	<i>Ratibida columnifera</i>
Butterfly Milkweed	<i>Asclepias tuberosa</i>	Prairie Coreopsis	<i>Coreopsis palmata</i>
Canada Wild Rye	<i>Elymus canadensis</i>	Prairie Dropseed	<i>Sporobolus heterolepis</i>
Cardinal Flower	<i>Lobelia cardinalis</i>	Prairie Petunia	<i>Ruellia humilis</i>
Carrotleaf Lomatium	<i>Lomatium foeniculaceum</i>	Prairie Ragwort	<i>Senecio plattensis</i>
Clammy-weed	<i>Polanisia dodecandra</i>	Purple Coneflower	<i>Echinacea purpurea</i>
Columbine	<i>Aquilegia canadensis</i>	Purple Milkweed	<i>Asclepias purpurascens</i>
Common Milkweed	<i>Asclepias syriaca</i>	Purple Prairie Clover	<i>Dalea purpurea</i>
Culver's Root	<i>Veronicastrum virginicum</i>	Rattlesnake Master	<i>Eryngium yuccifolium</i>
Cusp Blazing Star	<i>Liatris mucronata</i>	Red Columbine	<i>Aquilegia canadensis</i>
Downy Goldenrod	<i>Solidago petiolaris</i>	Rose Mallow	<i>Hibiscus militaris (laevis)</i>
Drummond's Aster	<i>Aster drummondii</i>	Rose Verbena	<i>Verbena canadensis</i>
Dutchman's Breeches	<i>Dicentra cucullaria</i>	Rough Rattlesnake Root	<i>Prenanthes aspera</i>
Dwarf Crested Iris	<i>Iris cristata</i>	Round Prairie Clover	<i>Dalea multiflora</i>
Early Meadow Rue	<i>Thadlictrum dioicum</i>	Sensitive Fern	<i>Onodea senibilis</i>
Elmleaf Goldenrod	<i>Solidago ulmifolia</i>	Showy Beardtongue	<i>Penstemon cobaea</i>
False Sunflower	<i>Heliopsis helianthoides</i>	Side-Oats Grama	<i>Bouteloua curtipendula</i>
Foxglove Beardtongue	<i>Penstemon digitalis</i>	Sky Blue Aster	<i>Aster oolentangiensis</i>
Fringed Puccoon	<i>Lithospermum incisum</i>	Slender Mountain Mint	<i>Pycnanthemum tenuifolium</i>
Golden Alexanders	<i>Zizia aurea</i>	Smooth Blue Aster	<i>Aster laevis</i>
Gray Goldenrod	<i>Solidago nemoralis</i>	Smooth Milkweed	<i>Asclepias sullivantii</i>
Gray-headed Coneflower	<i>Ratibida pinnata</i>	Sneezeweed	<i>Helenium autumnale</i>
Hairy Sunflower	<i>Helianthus hirsutus</i>	Snow on the Mountain	<i>Euphorbia marginata</i>
Hairy Wild Rye	<i>Elymus villosus</i>	Spring Beauty	<i>Claytonia virginica</i>
Indian Woodoats	<i>Chasmanthium latifolium</i>	Starry Champion	<i>Silene stellata</i>
Jack-in-the-Pulpit	<i>Arisaema triphillum</i>	Stiff Goldenrod	<i>Solidago rigida</i>
Large-Flower Beardtongue	<i>Penstemon grandiflorus</i>	Swamp Milkweed	<i>Asclepias incarnata</i>
Little Bluestem	<i>Schizachyrium scoparium</i>	Sweet Joe-Pye	<i>Eupatorium purpureum</i>
Maidenhair Fern	<i>Adiantum pedatum</i>	Switchgrass	<i>Panicum virgatum</i>
Marsh Milkweed	<i>Asclepias incarnata</i>	Tall Blazing Star	<i>Liatris aspera</i>
Maryland Senna	<i>Cassia marilandica</i>	Virginia Knotweed	<i>Polygonum virginianum</i>
Michigan Lily	<i>Lilium michiganense</i>	Virginia Waterleaf	<i>Hydrophyllum virginianum</i>
Mint-leaf Beebalm	<i>Monarda fistulosa</i>	Western Yarrow	<i>Achillea millefolium</i>
Missouri Evening Primrose	<i>Oenothera macrocarpa</i>	White Sage	<i>Artemisia ludoviciana</i>
Narrowleaf Verbena	<i>Verbena simplex</i>	White Snakeroot	<i>Eupatorium rugosum</i>
New England Aster	<i>Aster novae-angliae</i>	White Wild Indigo	<i>Baptisia alba</i>
Obedient Plant	<i>Physostegia virginiana</i>	Woolly Verbena	<i>Verbena stricta</i>
Ohio Spiderwort	<i>Tradescantia ohiensis</i>		

Online native plant resources

Ladybird Johnson Wildflower Center, www.wildflower.org

Grow Native program from the Missouri Department of Conservation, www.grownative.org

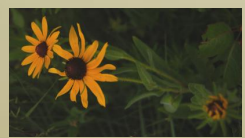
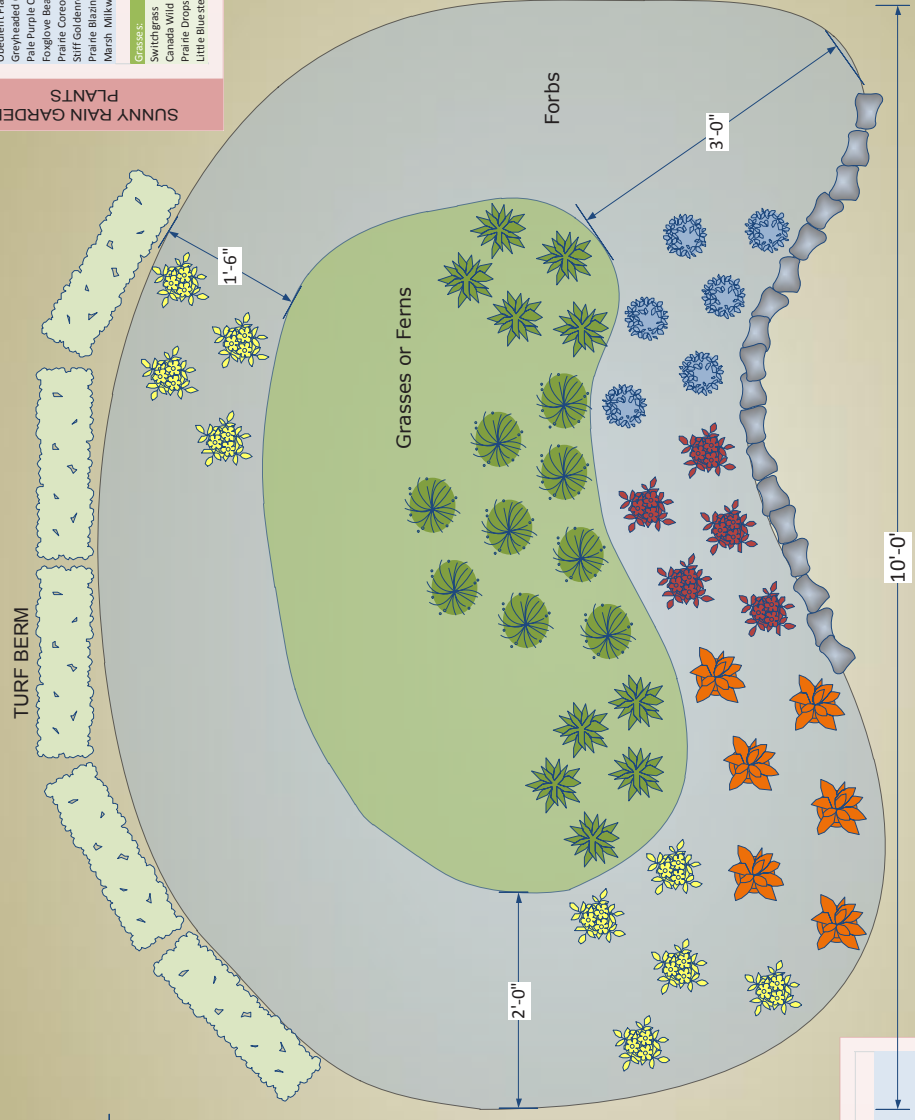
Blue Thumb plantings for water quality, www.bluethumb.org

Kansas Wildflowers & Grasses, www.kswildflower.org

Homeowner Rain Garden Guide

SUNNY RAIN GARDEN PLANTS

Forbs:	Common name	Botanical name
	Obsidian Plant	<i>Physostegia virginiana</i>
	Grey-headed Cone-flower	<i>Ratibida pinnata</i>
	Pale Purple Cone-flower	<i>Echinacea pallida</i>
	Foxglove Beardtongue	<i>Penstemon Digitalis</i>
	Prairie Coreopsis	<i>Coreopsis Palmata</i>
	Stiff Goldenrod	<i>Solidago rigida</i>
	Prairie Blazing Star	<i>Liatris Pycnostachya</i>
	Marsh Milkweed	<i>Asclepias incarnata</i>
Grasses:		
	Switchgrass	<i>Panicum virgatum</i>
	Canada Wild Rye	<i>Elymus canadensis</i>
	Prairie Dropseed	<i>Sporobolus heterolepis</i>
	Little Blue-stem	<i>Schizachyrium scoparium</i>



Forbs:	Common name	Botanical name
	Dwarf Crested Iris	<i>Iris cristata</i>
	Columbine	<i>Aquilegia canadensis</i>
	Cardinal Flower	<i>Lobelia Cardinalis</i>
	Dutchman's Breeches	<i>Dicentra cucullaria</i>
	Black-eyed Susan	<i>Rudbeckia hirta</i>
	Golden Alexander	<i>Zizia Apterata</i>
	Rose Mallow	<i>Hibiscus militaris (laevis)</i>
	Jack-in-the-Pulpit	<i>Arisaema triphyllum</i>
Grasses and Ferns:		
	Sensitive Fern	<i>Onoclea sensibilis</i>
	Botchbrush Grass	<i>Hystrix patula</i>
	Maidenhair Fern	<i>Adiantum pedatum</i>
	Early Meadow Rue	<i>Thalictrum dioicum</i>

SHADY RAIN GARDEN PLANTS