

**SCREENING REPORT FOR AN ENVIRONMENTAL AUTHORIZATION AS  
REQUIRED BY THE 2014 EIA REGULATIONS – PROPOSED SITE  
ENVIRONMENTAL SENSITIVITY**

**EIA Reference number:**

**Project name:** ENERTRAG South Africa Jessa Z Grid Corridors

**Project title:** Basic Assessment for the Jessa Z Grid Connection near Beaufort West in the Western Cape Province

**Date screening report generated:** 02/02/2022 06:35:05

**Applicant:** ENERTRAG South Africa (Pty) Ltd

**Compiler:** Alice Moropa

**Compiler signature:**  
.....

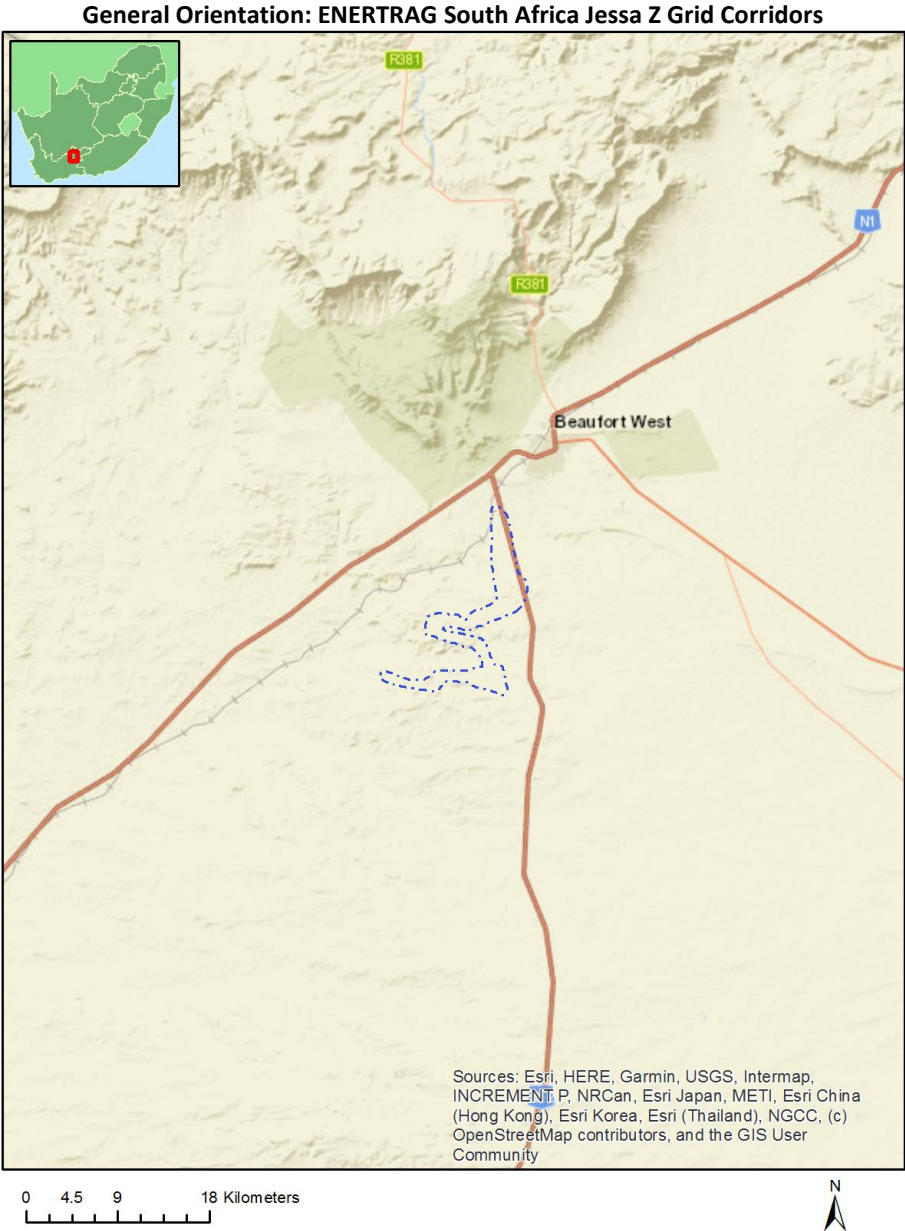
**Application Category:** Utilities Infrastructure | Electricity | Distribution and Transmission | Powerline

## Table of Contents

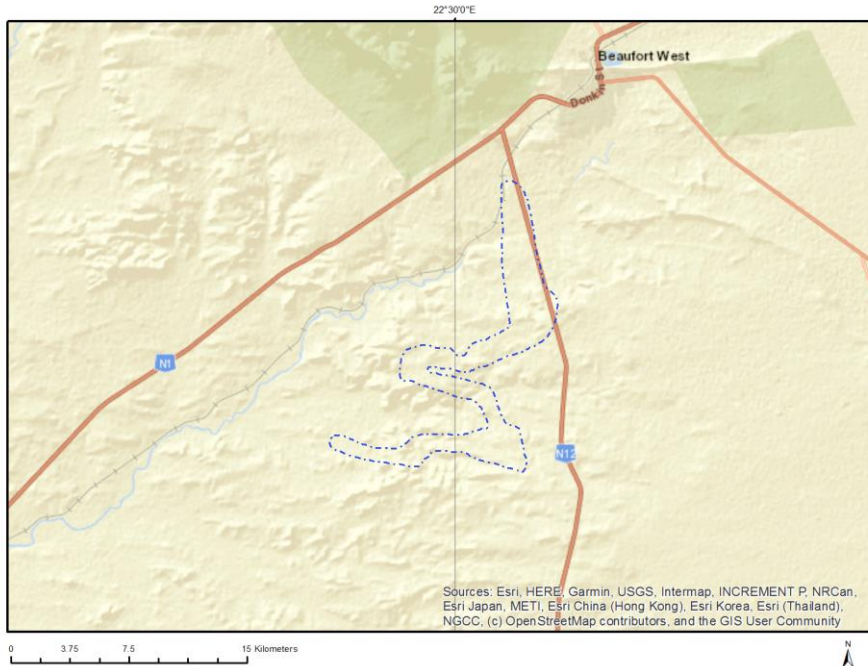
Proposed Project Location .....	3
Orientation map 1: General location .....	3
Map of proposed site and relevant area(s) .....	4
Cadastral details of the proposed site .....	4
Wind and Solar developments with an approved Environmental Authorisation or applications under consideration within 30 km of the proposed area .....	5
Environmental Management Frameworks relevant to the application .....	5
Environmental screening results and assessment outcomes .....	5
Relevant development incentives, restrictions, exclusions or prohibitions .....	5
Map indicating proposed development footprint within applicable development incentive, restriction, exclusion or prohibition zones .....	7
Proposed Development Area Environmental Sensitivity .....	7
Specialist assessments identified .....	8
Results of the environmental sensitivity of the proposed area .....	10
MAP OF RELATIVE AGRICULTURE THEME SENSITIVITY .....	10
MAP OF RELATIVE ANIMAL SPECIES THEME SENSITIVITY .....	11
MAP OF RELATIVE AQUATIC BIODIVERSITY THEME SENSITIVITY .....	12
MAP OF RELATIVE ARCHAEOLOGICAL AND CULTURAL HERITAGE THEME SENSITIVITY .....	13
MAP OF RELATIVE CIVIL AVIATION THEME SENSITIVITY .....	14
MAP OF RELATIVE DEFENCE THEME SENSITIVITY .....	15
MAP OF RELATIVE PALEONTOLOGY THEME SENSITIVITY .....	16
MAP OF RELATIVE PLANT SPECIES THEME SENSITIVITY .....	17
MAP OF RELATIVE TERRESTRIAL BIODIVERSITY THEME SENSITIVITY .....	18

# Proposed Project Location

## Orientation map 1: General location



## Map of proposed site and relevant area(s)



## Cadastral details of the proposed site

Property details:

No	Farm Name	Farm/ Erf No	Portion	Latitude	Longitude	Property Type
1		432	0	32°29'29.16S	22°32'11.33E	Farm
2	LOMBARDS KRAAL	330	0	32°31'36.41S	22°34'35.87E	Farm
3	MISSING	170	0	32°26'51.8S	22°31'22.32E	Farm
4	WELTEVREDE WES	172	0	32°24'29.41S	22°29'56.92E	Farm
5	MISSING	319	0	32°31'30.06S	22°28'51.07E	Farm
6	MISSING	168	0	32°25'18.35S	22°33'38.26E	Farm
7	MISSING	170	35	32°24'27.95S	22°31'54.14E	Farm Portion
8	MISSING	319	0	32°31'39.85S	22°26'24.68E	Farm Portion
9	MISSING	319	7	32°29'23.75S	22°27'29.04E	Farm Portion
10	MISSING	170	10	32°24'29.79S	22°31'42.3E	Farm Portion
11	MISSING	170	37	32°24'32.2S	22°31'54.73E	Farm Portion
12	MISSING	170	34	32°27'0.65S	22°33'12.39E	Farm Portion
13	MISSING	170	10	32°26'12.97S	22°31'54.81E	Farm Portion
14	MISSING	319	1	32°29'57.09S	22°28'59.9E	Farm Portion
15	MISSING	168	1	32°24'2.31S	22°32'59.04E	Farm Portion
16	MISSING	170	3	32°24'8.82S	22°31'41.22E	Farm Portion
17	WELTEVREDE WES	172	1	32°23'58.74S	22°30'56.54E	Farm Portion
18	MISSING	170	17	32°24'43.04S	22°31'39.56E	Farm Portion
19	MISSING	170	25	32°24'57.11S	22°31'29.67E	Farm Portion
20	MISSING	170	31	32°24'19.47S	22°31'54.37E	Farm Portion
21	MISSING	168	55	32°26'10.12S	22°32'35.63E	Farm Portion
22	MISSING	170	29	32°24'25.52S	22°31'42.1E	Farm Portion
23	MISSING	170	30	32°24'25.36S	22°31'46.49E	Farm Portion
24	MISSING	170	27	32°24'7.04S	22°31'37.87E	Farm Portion

25	MISSING	319	5	32°31'18.02S	22°31'28.83E	Farm Portion
26		432	0	32°29'29.16S	22°32'11.33E	Farm Portion
27	LOMBARDS KRAAL	330	12	32°29'44.54S	22°35'29.6E	Farm Portion
28	LOMBARDS KRAAL	330	0	32°32'36.84S	22°33'9.9E	Farm Portion
29	MISSING	170	36	32°24'9.81S	22°31'52.9E	Farm Portion
30	WELTEVREDE WES	172	1	32°24'5.14S	22°30'57E	Farm Portion
31	MISSING	319	6	32°32'23.22S	22°29'30.87E	Farm Portion
32	MISSING	319	2	32°28'13.01S	22°29'52.34E	Farm Portion

Development footprint<sup>1</sup> vertices:  
No development footprint(s) specified.

## Wind and Solar developments with an approved Environmental Authorisation or applications under consideration within 30 km of the proposed area

No	EIA Reference No	Classification	Status of application	Distance from proposed area (km)
1	12/12/20/2133	Solar PV	Approved	0
2	14/12/16/3/3/2/773	Solar PV	Approved	1.7
3	14/12/16/3/3/2/772	Solar PV	Approved	1.7
4	14/12/16/3/3/2/774	Solar PV	Approved	3.2
5	12/12/20/2286	Solar PV	Approved	11.6
6	14/12/16/3/3/1/2332	Solar PV	Approved	13

## Environmental Management Frameworks relevant to the application

No intersections with EMF areas found.

## Environmental screening results and assessment outcomes

The following sections contain a summary of any development incentives, restrictions, exclusions or prohibitions that apply to the proposed development site as well as the most environmental sensitive features on the site based on the site sensitivity screening results for the application classification that was selected. The application classification selected for this report is:

**Utilities Infrastructure | Electricity | Distribution and Transmission | Powerline.**

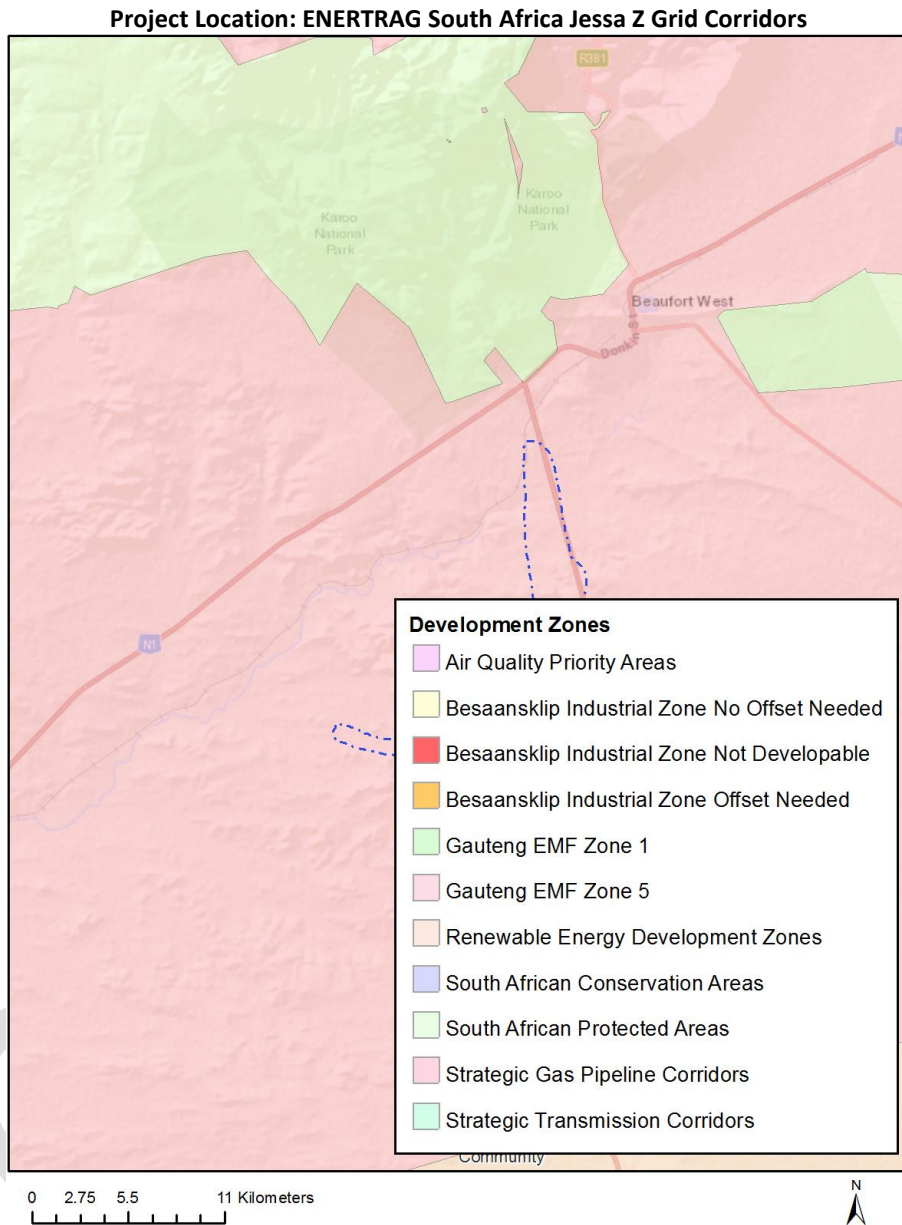
## Relevant development incentives, restrictions, exclusions or prohibitions

The following development incentives, restrictions, exclusions or prohibitions and their implications that apply to this site are indicated below.

<sup>1</sup> "development footprint", means the area within the site on which the development will take place and includes all ancillary developments for example roads, power lines, boundary walls, paving etc. which require vegetation clearance or which will be disturbed and for which the application has been submitted.

Incentive, restriction or prohibition	Implication
Strategic Transmission Corridor-Central corridor	<a href="https://screening.environment.gov.za/ScreeningDownloads/DevelopmentZones/Combined_EGI.pdf">https://screening.environment.gov.za/ScreeningDownloads/DevelopmentZones/Combined_EGI.pdf</a>
Renewable energy development zones 11-Beaufort West	<a href="https://screening.environment.gov.za/ScreeningDownloads/DevelopmentZones/Combined_REDZ.pdf">https://screening.environment.gov.za/ScreeningDownloads/DevelopmentZones/Combined_REDZ.pdf</a>
Strategic Gas Pipeline Corridors-Phase 9: Inland Corridor from Saldanha to Coega	<a href="https://screening.environment.gov.za/ScreeningDownloads/DevelopmentZones/Combined_GAS.pdf">https://screening.environment.gov.za/ScreeningDownloads/DevelopmentZones/Combined_GAS.pdf</a>

Map indicating proposed development footprint within applicable development incentive, restriction, exclusion or prohibition zones



**Proposed Development Area Environmental Sensitivity**

The following summary of the development site environmental sensitivities is identified. Only the highest environmental sensitivity is indicated. The footprint environmental sensitivities for the proposed development footprint as identified, are indicative only and must be verified on site by a suitably qualified person before the specialist assessments identified below can be confirmed.

Theme	Very High sensitivity	High sensitivity	Medium sensitivity	Low sensitivity
Agriculture Theme			X	
Animal Species Theme		X		



Aquatic Biodiversity Theme	X			
Archaeological and Cultural Heritage Theme				X
Civil Aviation Theme		X		
Defence Theme				X
Paleontology Theme	X			
Plant Species Theme			X	
Terrestrial Biodiversity Theme	X			

### Specialist assessments identified

Based on the selected classification, and the environmental sensitivities of the proposed development footprint, the following list of specialist assessments have been identified for inclusion in the assessment report. It is the responsibility of the EAP to confirm this list and to motivate in the assessment report, the reason for not including any of the identified specialist study including the provision of photographic evidence of the site situation.

<b>N o</b>	<b>Specialist assessment</b>	<b>Assessment Protocol</b>
1	Agricultural Impact Assessment	<a href="https://screening.environment.gov.za/ScreeningDownloads/AssessmentProtocols/Gazetted_General_Agriculture_Assessment_Protocols.pdf">https://screening.environment.gov.za/ScreeningDownloads/AssessmentProtocols/Gazetted_General_Agriculture_Assessment_Protocols.pdf</a>
2	Landscape/Visual Impact Assessment	<a href="https://screening.environment.gov.za/ScreeningDownloads/AssessmentProtocols/Gazetted_General_Requirement_Assessment_Protocols.pdf">https://screening.environment.gov.za/ScreeningDownloads/AssessmentProtocols/Gazetted_General_Requirement_Assessment_Protocols.pdf</a>
3	Archaeological and Cultural Heritage Impact Assessment	<a href="https://screening.environment.gov.za/ScreeningDownloads/AssessmentProtocols/Gazetted_General_Requirement_Assessment_Protocols.pdf">https://screening.environment.gov.za/ScreeningDownloads/AssessmentProtocols/Gazetted_General_Requirement_Assessment_Protocols.pdf</a>
4	Palaeontology Impact Assessment	<a href="https://screening.environment.gov.za/ScreeningDownloads/AssessmentProtocols/Gazetted_General_Requirement_Assessment_Protocols.pdf">https://screening.environment.gov.za/ScreeningDownloads/AssessmentProtocols/Gazetted_General_Requirement_Assessment_Protocols.pdf</a>
5	Terrestrial Biodiversity Impact Assessment	<a href="https://screening.environment.gov.za/ScreeningDownloads/AssessmentProtocols/Gazetted_Terrestrial_Biodiversity_Assessment_Protocols.pdf">https://screening.environment.gov.za/ScreeningDownloads/AssessmentProtocols/Gazetted_Terrestrial_Biodiversity_Assessment_Protocols.pdf</a>
6	Aquatic Biodiversity Impact Assessment	<a href="https://screening.environment.gov.za/ScreeningDownloads/AssessmentProtocols/Gazetted_Aquatic_Biodiversity_Assessment_Protocols.pdf">https://screening.environment.gov.za/ScreeningDownloads/AssessmentProtocols/Gazetted_Aquatic_Biodiversity_Assessment_Protocols.pdf</a>

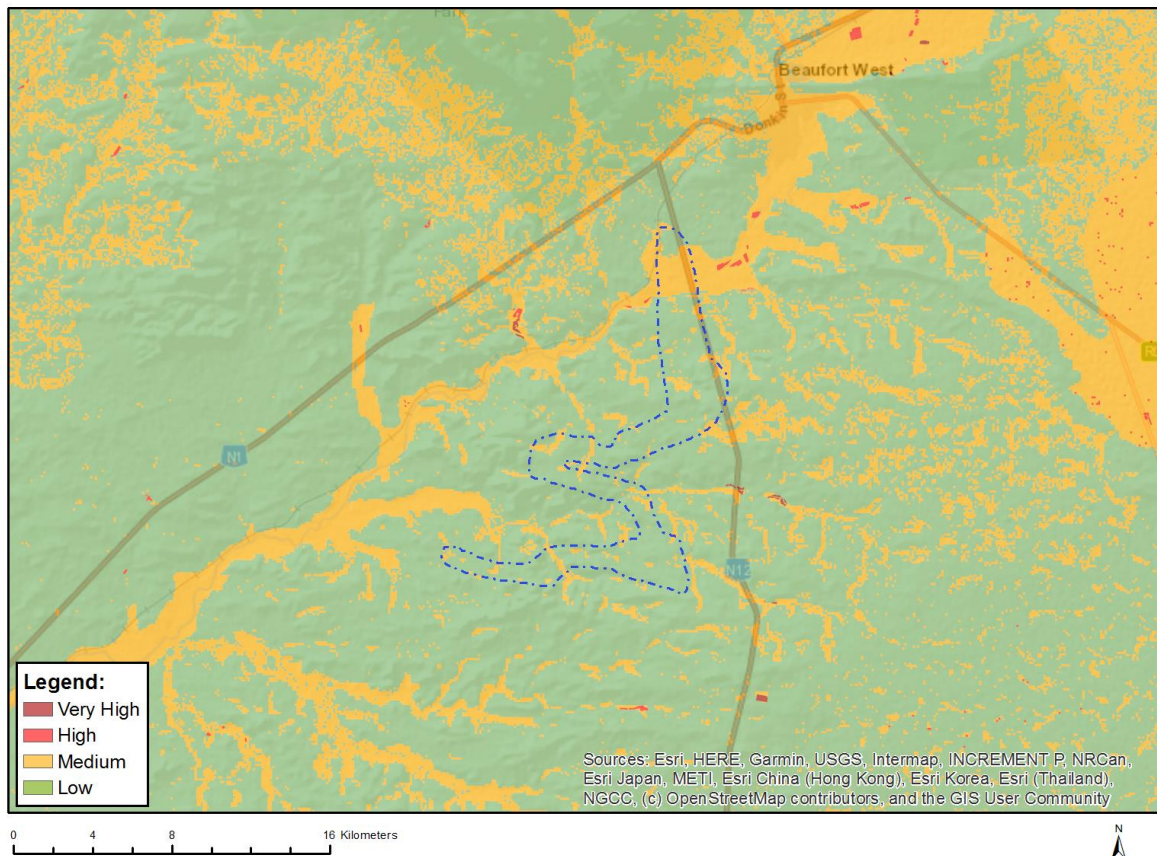


7	Avian Impact Assessment	<a href="https://screening.environment.gov.za/ScreeningDownloads/AssessmentProtocols/Gazetted_Avifauna_Assessment_Protocols.pdf">https://screening.environment.gov.za/ScreeningDownloads/AssessmentProtocols/Gazetted_Avifauna_Assessment_Protocols.pdf</a>
8	Civil Aviation Assessment	<a href="https://screening.environment.gov.za/ScreeningDownloads/AssessmentProtocols/Gazetted_Civil_Aviation_Installations_Assessment_Protocols.pdf">https://screening.environment.gov.za/ScreeningDownloads/AssessmentProtocols/Gazetted_Civil_Aviation_Installations_Assessment_Protocols.pdf</a>
9	RFI Assessment	<a href="https://screening.environment.gov.za/ScreeningDownloads/AssessmentProtocols/Gazetted_General_Requirement_Assessment_Protocols.pdf">https://screening.environment.gov.za/ScreeningDownloads/AssessmentProtocols/Gazetted_General_Requirement_Assessment_Protocols.pdf</a>
10	Geotechnical Assessment	<a href="https://screening.environment.gov.za/ScreeningDownloads/AssessmentProtocols/Gazetted_General_Requirement_Assessment_Protocols.pdf">https://screening.environment.gov.za/ScreeningDownloads/AssessmentProtocols/Gazetted_General_Requirement_Assessment_Protocols.pdf</a>
11	Plant Species Assessment	<a href="https://screening.environment.gov.za/ScreeningDownloads/AssessmentProtocols/Gazetted_Plant_Species_Assessment_Protocols.pdf">https://screening.environment.gov.za/ScreeningDownloads/AssessmentProtocols/Gazetted_Plant_Species_Assessment_Protocols.pdf</a>
12	Animal Species Assessment	<a href="https://screening.environment.gov.za/ScreeningDownloads/AssessmentProtocols/Gazetted_Animal_Species_Assessment_Protocols.pdf">https://screening.environment.gov.za/ScreeningDownloads/AssessmentProtocols/Gazetted_Animal_Species_Assessment_Protocols.pdf</a>

## Results of the environmental sensitivity of the proposed area.

The following section represents the results of the screening for environmental sensitivity of the proposed site for relevant environmental themes associated with the project classification. It is the duty of the EAP to ensure that the environmental themes provided by the screening tool are comprehensive and complete for the project. Refer to the disclaimer.

### MAP OF RELATIVE AGRICULTURE THEME SENSITIVITY

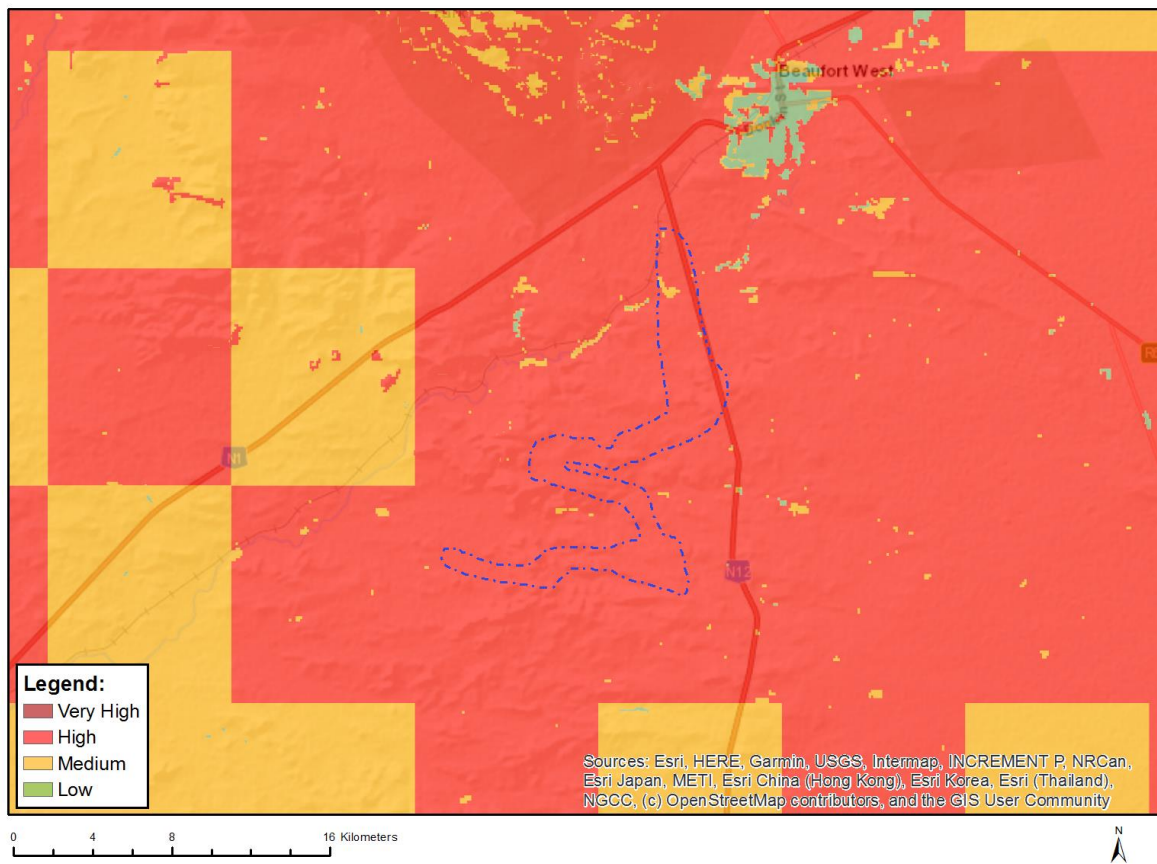


Very High sensitivity	High sensitivity	Medium sensitivity	Low sensitivity
		X	

#### Sensitivity Features:

Sensitivity	Feature(s)
Low	Land capability;01. Very low/02. Very low/03. Low-Very low/04. Low-Very low/05. Low
Medium	Land capability;06. Low-Moderate/07. Low-Moderate/08. Moderate

## MAP OF RELATIVE ANIMAL SPECIES THEME SENSITIVITY



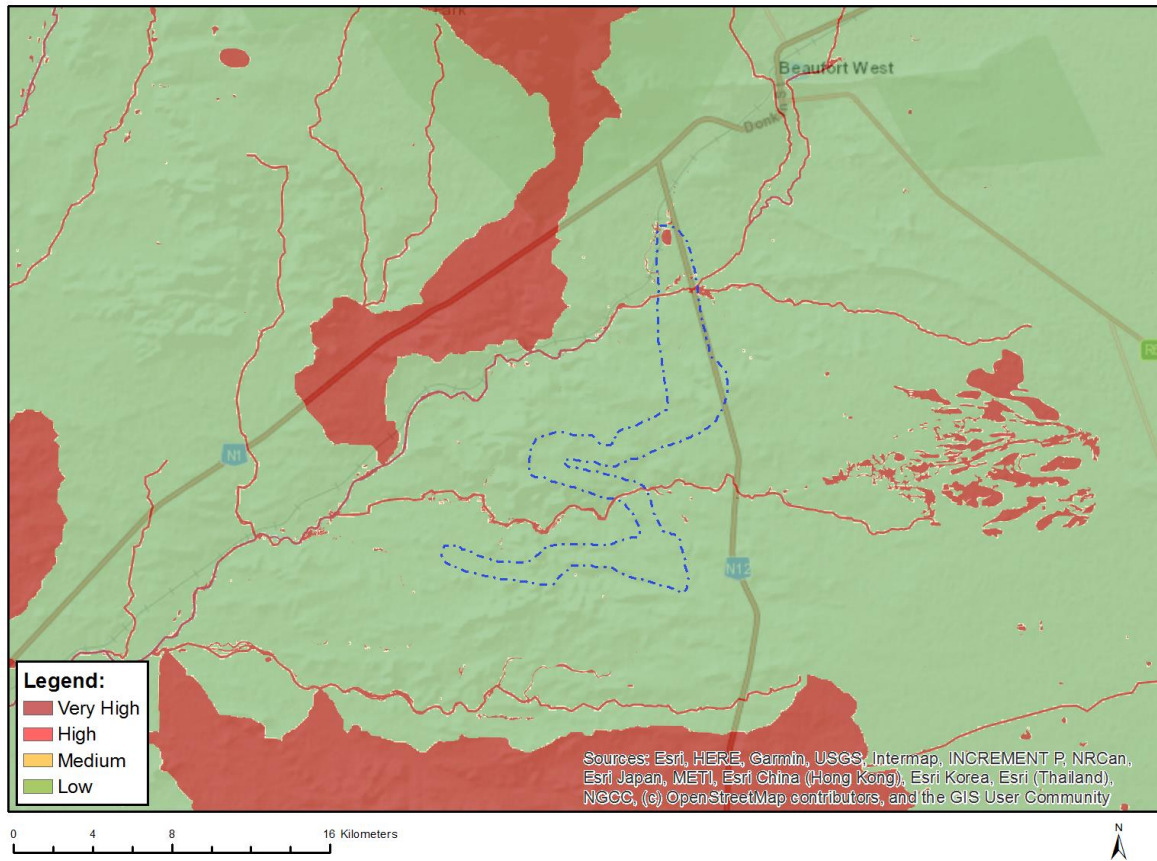
Where only a sensitive plant unique number or sensitive animal unique number is provided in the screening report and an assessment is required, the environmental assessment practitioner (EAP) or specialist is required to email SANBI at [eiadatarequests@sanbi.org.za](mailto:eiadatarequests@sanbi.org.za) listing all sensitive species with their unique identifiers for which information is required. The name has been withheld as the species may be prone to illegal harvesting and must be protected. SANBI will release the actual species name after the details of the EAP or specialist have been documented.

Very High sensitivity	High sensitivity	Medium sensitivity	Low sensitivity
	X		

### Sensitivity Features:

Sensitivity	Feature(s)
High	Mammalia-Felis nigripes
High	Aves-Neotis ludwigii
Low	Low sensitivity
Medium	Aves-Circus maurus
Medium	Aves-Aquila verreauxii
Medium	Reptilia-Chersobius boulengeri

## MAP OF RELATIVE AQUATIC BIODIVERSITY THEME SENSITIVITY



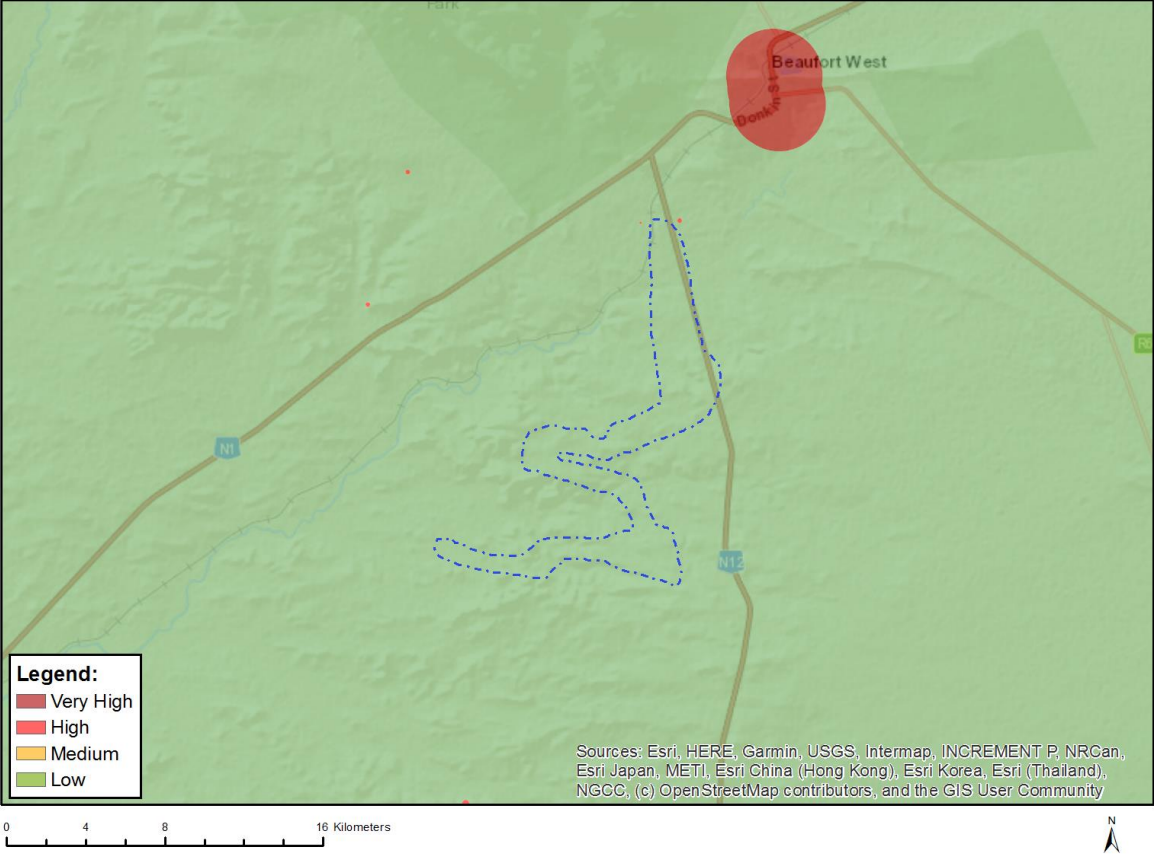
Very High sensitivity	High sensitivity	Medium sensitivity	Low sensitivity
X			

### Sensitivity Features:

Sensitivity	Feature(s)
Low	Low sensitivity
Very High	Aquatic CBAs
Very High	Rivers
Very High	Wetlands and Estuaries



# MAP OF RELATIVE ARCHAEOLOGICAL AND CULTURAL HERITAGE THEME SENSITIVITY

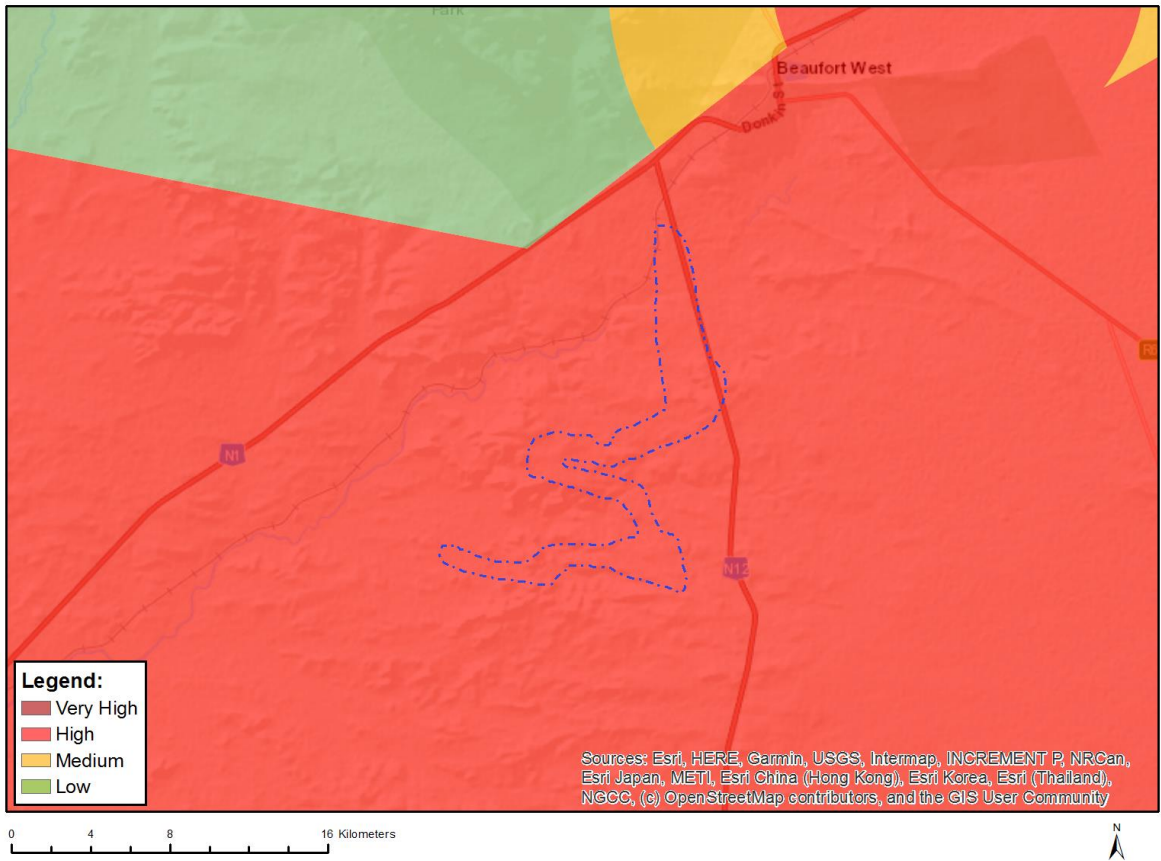


Very High sensitivity	High sensitivity	Medium sensitivity	Low sensitivity
			X

**Sensitivity Features:**

Sensitivity	Feature(s)
Low	Low sensitivity

## MAP OF RELATIVE CIVIL AVIATION THEME SENSITIVITY

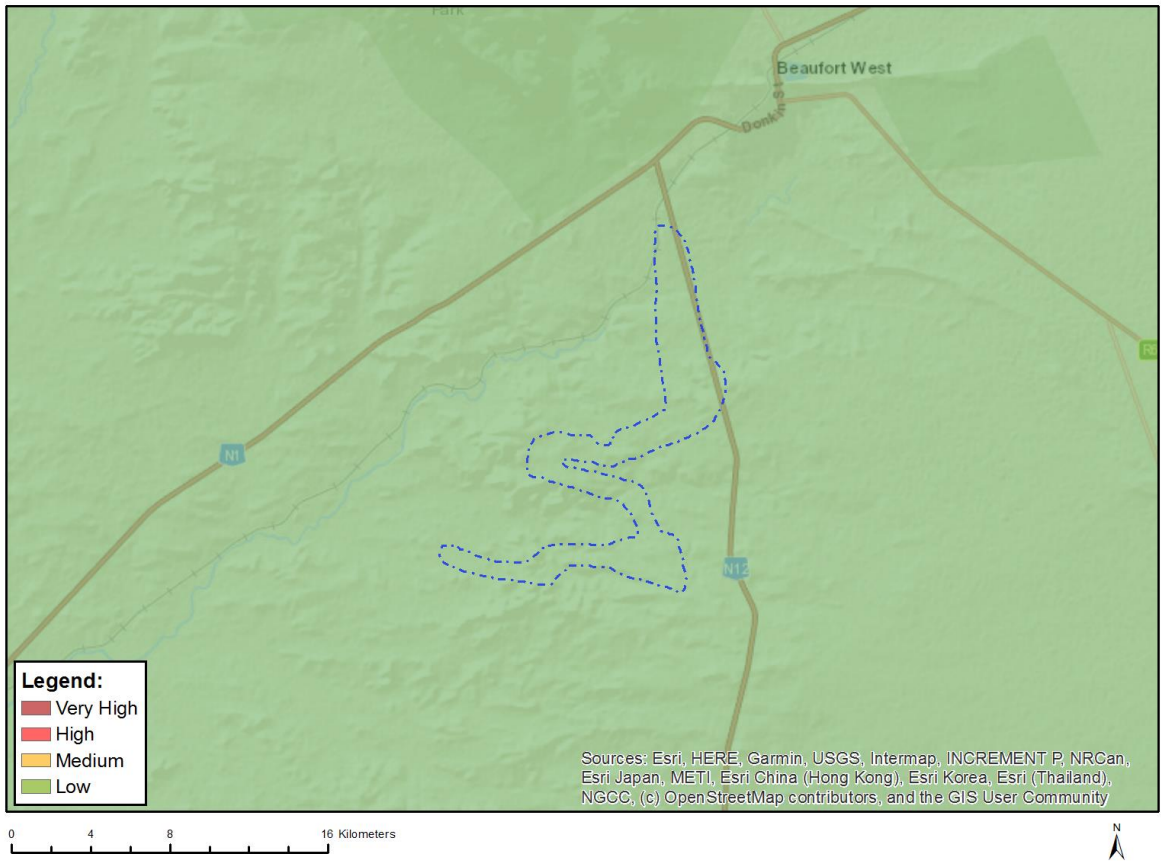


Very High sensitivity	High sensitivity	Medium sensitivity	Low sensitivity
	X		

### Sensitivity Features:

Sensitivity	Feature(s)
High	Dangerous and restricted airspace as demarcated

# MAP OF RELATIVE DEFENCE THEME SENSITIVITY



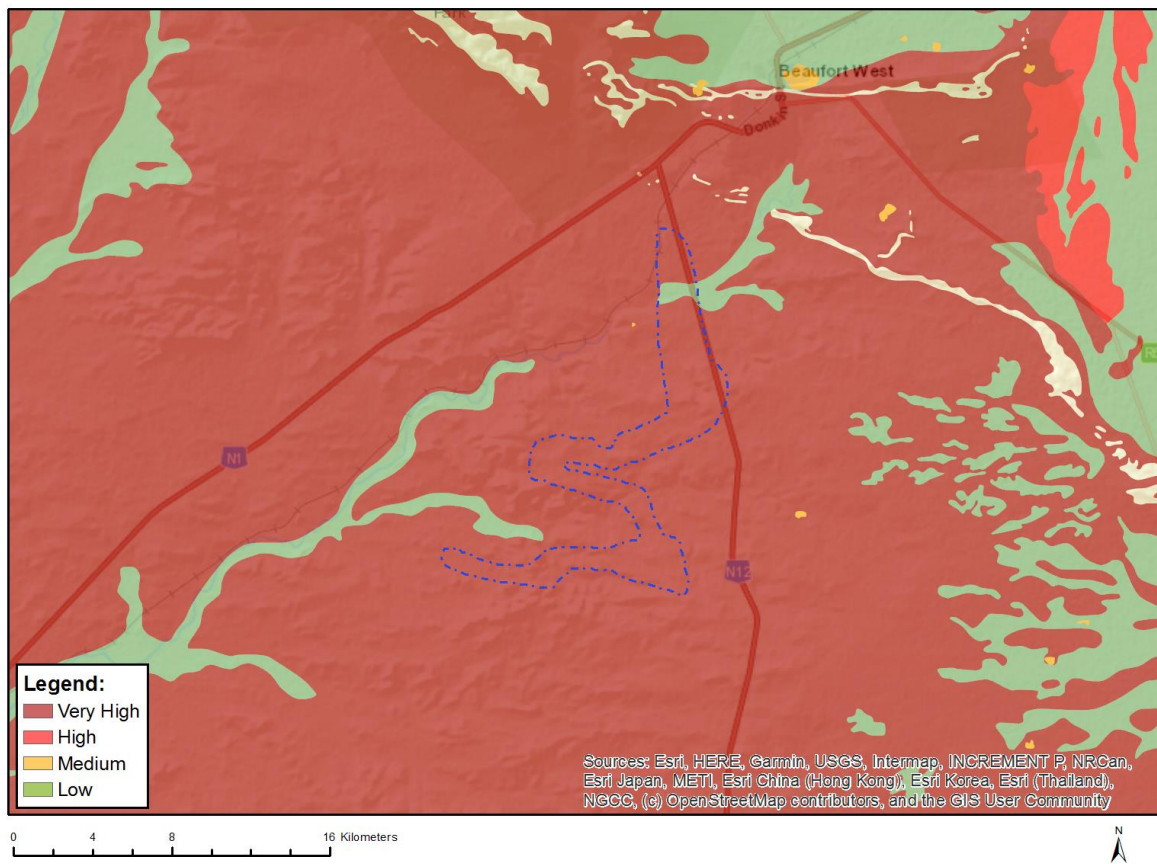
Very High sensitivity	High sensitivity	Medium sensitivity	Low sensitivity
			X

## Sensitivity Features:

Sensitivity	Feature(s)
Low	Low Sensitivity



## MAP OF RELATIVE PALEONTOLOGY THEME SENSITIVITY

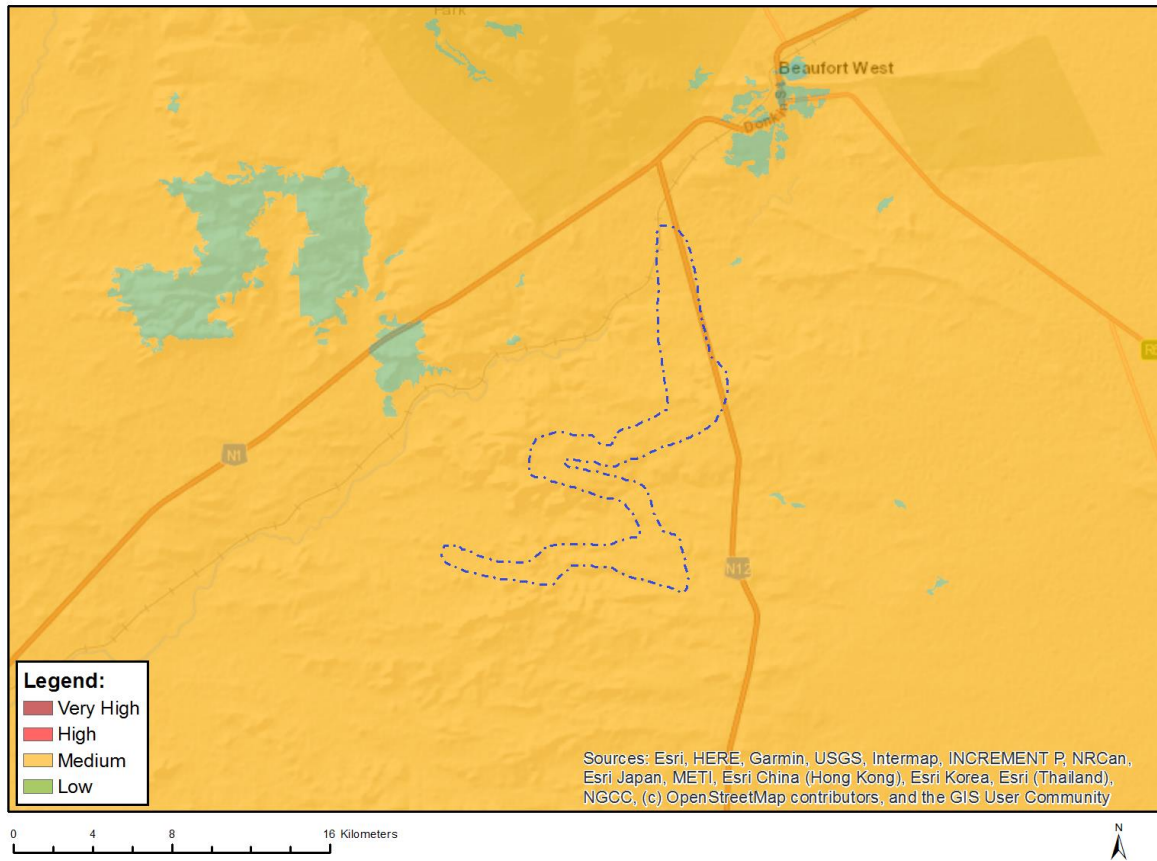


Very High sensitivity	High sensitivity	Medium sensitivity	Low sensitivity
X			

### Sensitivity Features:

Sensitivity	Feature(s)
Low	Features with a Low paleontological sensitivity
Very High	Features with a Very High paleontological sensitivity

## MAP OF RELATIVE PLANT SPECIES THEME SENSITIVITY



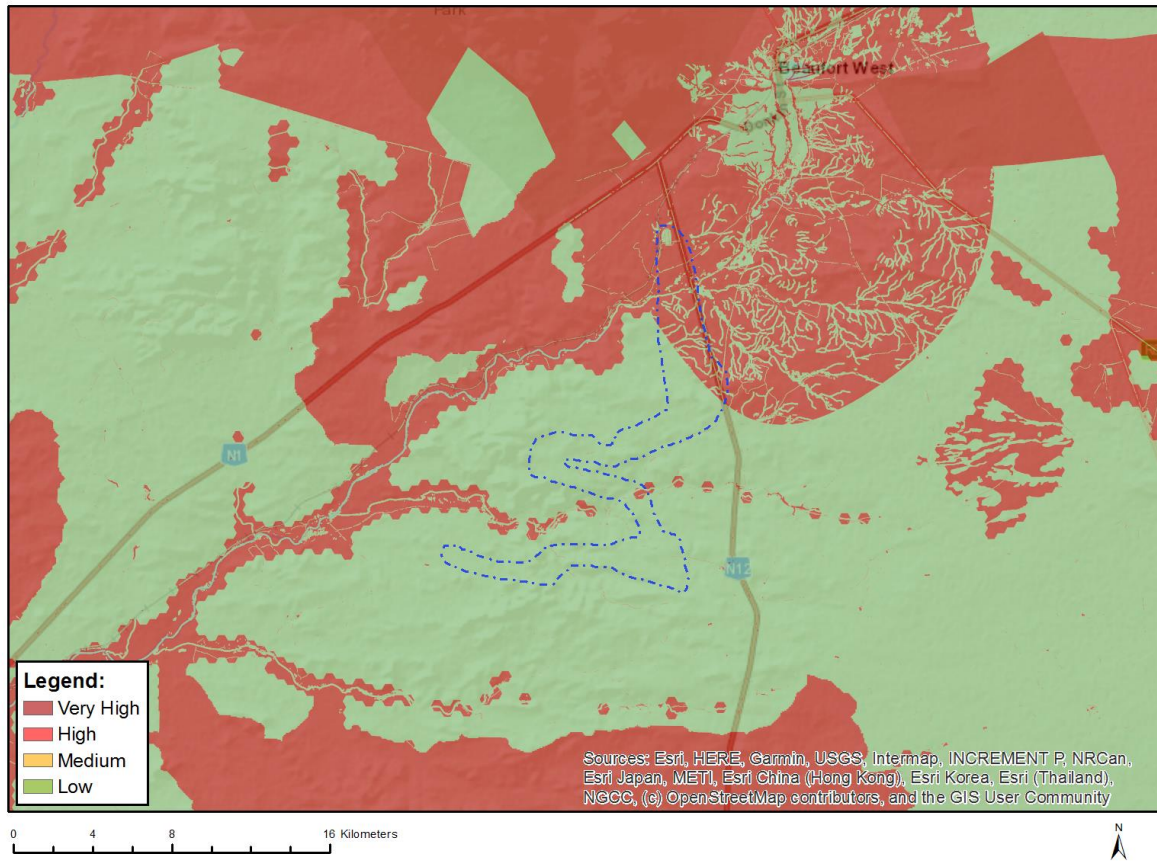
Where only a sensitive plant unique number or sensitive animal unique number is provided in the screening report and an assessment is required, the environmental assessment practitioner (EAP) or specialist is required to email SANBI at [eiadatarequests@sanbi.org.za](mailto:eiadatarequests@sanbi.org.za) listing all sensitive species with their unique identifiers for which information is required. The name has been withheld as the species may be prone to illegal harvesting and must be protected. SANBI will release the actual species name after the details of the EAP or specialist have been documented.

Very High sensitivity	High sensitivity	Medium sensitivity	Low sensitivity
		X	

### Sensitivity Features:

Sensitivity	Feature(s)
Low	Low Sensitivity
Medium	Ruschia beaufortensis
Medium	Sensitive species 383
Medium	Peersia frithii
Medium	Sensitive species 1212
Medium	Tritonia florentiae

## MAP OF RELATIVE TERRESTRIAL BIODIVERSITY THEME SENSITIVITY



Very High sensitivity	High sensitivity	Medium sensitivity	Low sensitivity
X			

### Sensitivity Features:

Sensitivity	Feature(s)
Low	Low Sensitivity
Very High	Critical biodiversity area 1
Very High	Ecological support area 1
Very High	Ecological support area 2