

**Carbon
Positive
Australia**



2021 IMPACT REPORT

YOUR DONATION MATTERS.

CONTENTS

01

Planting

- 2021 Projects
- Monitoring
- 2022 Projects

02

Research & Innovation

- Carbon Footprint Calculator
- CarbonCare Voices
- CarbonCare Co-Benefits
- Press & Appearances

03

Financials

- Income By Source
- Expenses by Source
- Grant Funding

04

Our Supporters

- Supporter Survey

CEO'S MESSAGE

This year the team and board have been defining what it means to be carbon positive. Thanks to the many generous individuals who completed our donor survey, we are also learning what being carbon positive means to you.

These reviews are bi-annual, and I'm always surprised by how much has happened between each one. Of course, the autumn/winter period is always our busiest as it's when most of our planting is done. In total, we planted just over 290 hectares this winter. It's been a challenging season with uncharacteristically high rainfall causing delays and flooding at several of our sites. In February, the creek crossings got washed out at our Nimbin site, and so instead of planting, we have begun natural regeneration this September, with planting now happening next autumn.

As we move into spring, we'll be heading out to all of our sites to see the impact of all the glorious rain we have had in WA. Although we know there will be lots of weeds, we're anticipating vigorous growth and a good start for all of the projects.

We have already identified our 2022 planting sites, including a further 250 hectares of planting at Eurardy Reserve, infill planting at Bencubbin, sandalwood planting at Gabbin and Cranbrook, and planting at Nimbin. Your support will also help fund two new regional sites in the coming year. These sites are located near Canna and Porongurup and are 300 hectares and 30 hectares respectively.



We know that the impacts of climate change are growing each year. Our community projects assist urban environments and remote regional locations with climate change mitigation.

In September, members of the Carbon Positive Australia team and a group of self-funded volunteers travelled to Tjuntjuntjara in the Great Victoria Desert, planting trees to alleviate dust and improve liveability and green spaces in the town.

You also funded 40,000 trees with Activate the Wheatbelt, an amazing community group in WA who plant on degraded land. Next year we'll provide 100,000 trees with Activate, and we're looking forward to deepening our alliance with this group over the coming years.

In 2022 we're planning community projects in Joondalup planting Miyawaki Forests with Dr Grey Coupland, and further work in the Central Deserts with the NPY Women's council. We're also looking to strengthen and deepen our relationships with the Rangers and community at Tjuntjuntjara.

Since our last report, we've launched our new carbon calculator and have now had over 7,500 individuals and families calculate their carbon footprint. The calculator featured on the ABC news, and the response to the calculator has been fantastic. We know

that taking steps to reduce our personal carbon footprint empowers us to take action to reduce our individual emissions and to encourage our friends, families and employers to do the same. We can all be the change we want to see in the world.

As always, I extend my thanks to you all. It's an honour to be involved with a community that wants to see real practical action to avert climate change. I know that by reading this report and understanding the work that you have helped make possible, you will see the genuine impacts your donations have and your contribution towards a carbon positive Australia.

My deepest gratitude,



Louise Tarrier
Chief Executive Officer



2021 KEY METRICS

70,443

Trees Funded By Donors

66,741

Tonnes of Carbon Offset By Donors

203,497

Seedlings Planted

7,805

Carbon Calculator Users

294

Hectares Restored

48.5

Kilograms of Seeds Distributed

2021 FY EVENT TIMELINE

2020

October

CarbonCare WA Broadacre Landholder Surveys conducted
Board & Team Strategy Day
Site planning: Nimbin, Eurardy and Brookton

Finalised seed orders

November

Eurardy monitoring
Seed collection at sites
Site planning Tootanellup
Online Carbon Calculator: user testing
Carbon Market Institute Virtual Summit

December

Site planning Gabbin
Seeds to nursery for propagation
EnviroFest stall
ISWA Holiday Fair

January

Calendar photography competition

CarbonCare stakeholder interviews

Began ERF registration of 2021 projects

February

AGM and launch of new name
Finalise Co-Benefit Report

Carbon Regional Forum

Guest appearances on various Podcasts

March

ABC news segment and article

2021

April

Brookton monitoring (saltland & biodiverse)
Official release of CarbonCare Voices & Co-Benefits reports
Check seedlings and finalise seed order

May

CarbonCare Teleseminar event
Final user testing for Carbon Calculator
Site works at Eurardy: ready for planting

June

Lines ripped at Gabbin ready for planting
Personal Carbon Footprint Calculator Launch
Activate The Wheatbelt community planting event (CPA donated 40,000 trees)

July

Planting at Eurardy Reserve
Planting at Gabbin
Monitoring and infill planting at Bencubbin
New and infill planting at Brookton
Planting at Tootanellup

August

Canna site visit
Poster drop at local cafes
Podcast recordings
Featured in The Slow Journal
CMI Virtual Carbon Farming Forum
Presented at UWA Biodiversity Conference

September

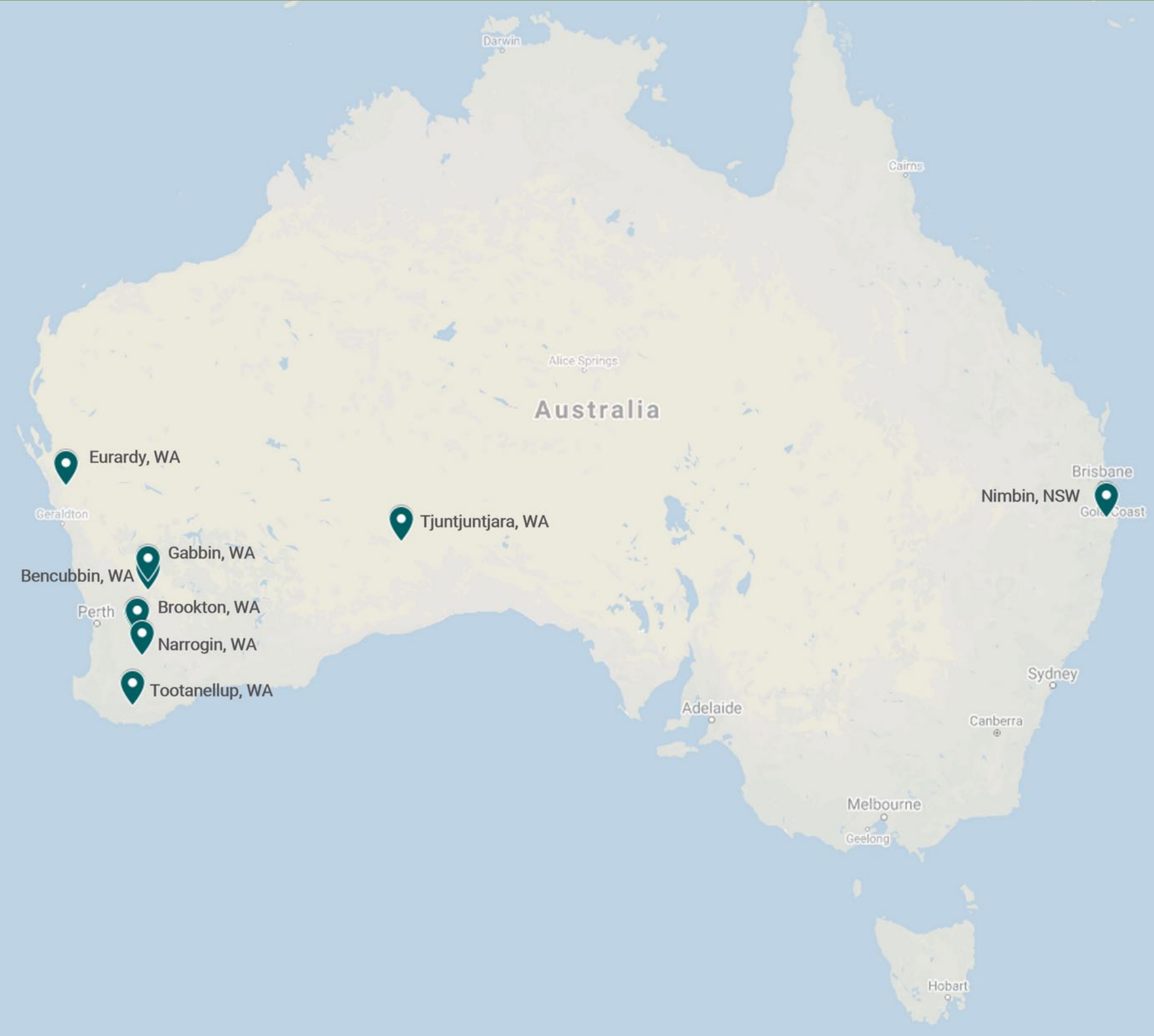
Presented at CCWA Annual Conference
Garnier campaign live in Coles nationwide
Koala survey and bush regen at Nimbin
Planting at Tjuntjuntjara



Part 1:

PLANTING RECAP

2021 PROJECTS



BROOKTON, WA

BALARDONG NOONGAR COUNTRY

Est. 2019 | 33 ha | Biodiverse Sandalwood | 27,725 seedlings | 125 kg native seed

PROJECT OVERVIEW

This is a native restoration project incorporating high-value native Australian sandalwood (*Santalum spicatum*). Before it was cleared for agriculture, much of this region was covered with native *Acacia* and sandalwood woodlands. It is now widely accepted that clearing of deep acid yellow wadjil soil should be avoided where possible, as the cleared soil is fragile and prone to wind and water erosion. A biodiverse mix of native species has been planted across the site. First planted in 2019, many of these trees will serve as hosts for the hemiparasitic native sandalwood. Sandalwood is an important part of the species mix with a range of therapeutic benefits that can be used commercially. Sandalwood seeds were first planted at this site in 2020.

KEY SPECIES

Acacia acuminata, *Acacia lasiocalyx*, *Acacia meisneri*, *Allocasuarina huegelliana*, *Banksia attenuata*, *Banksia prionotes*, *Hakea multilineata*, *Hakea corymbosa*, and *Santalum spicatum*.

WHAT HAPPENED THIS YEAR

Germination of the sandalwood seed planted in 2020 was patchy, so in April we engaged the Noongar Budjar Rangers to plant an additional 30kg of seed across the planting area. In the original planting, two seeds were planted per hole next to every second host tree. This time, we took a new approach, planting one seed on either side of every second host.

WHAT'S NEXT?

The team will visit the site again next autumn to monitor progress. We will be paying particular attention to sandalwood germination rates to see if the new planting technique was more successful. Further infill planting of both hosts and sandalwood will be undertaken if required.



BROOKTON SALTLAND, WA

BALARDONG NOONGAR COUNTRY

Est. 2019 | 28.5 ha | Saltland Carbon | 34,949 seedlings

PROJECT OVERVIEW

Located in the WA Wheatbelt, this planting site is part of a larger property owned by the Hall family. Due to the clearing of native vegetation and grazing of stock over many generations, much of the land in this region is affected by salinity and erosion. The Halls are particularly concerned with the rising water table and salinisation of adjacent cropping land. We have been working with Dr Peter Ritson from FarmWoods to restore this area using a specifically designed mix of salt-tolerant native species to replicate pre-colonisation vegetation.

KEY SPECIES

Acacia acuminata, *Atriplex semibaccata*, *Casuarina obesa*, *Eucalyptus loxophleba*, *Melaleuca thyoides*, *Melaleuca brophyi*, *Melaleuca cuticularis*.

WHAT HAPPENED THIS YEAR

In July, we planted an additional 8.5 ha at this site. Under the expert guidance of Dr Peter Ritson, more than 15,000 seedlings were hand-planted by the Noongar Budjar Rangers from the Wheatbelt NRM.

WHAT'S NEXT?

In the coming weeks, team members Jess and Alice will head to the site to undertake initial survival monitoring. The region has experienced uncharacteristically high rainfall this winter, so it will be interesting to see how the seedlings have fared.



EURARDY RESERVE, WA

NANDA COUNTRY

Est. 2019 | 618 ha | Biodiverse Carbon | 350,729 seedlings | Owned by Bush Heritage Australia

PROJECT OVERVIEW

Previously a pastoral station, Eurardy Reserve extends over 30,000 hectares of Nanda Country within the Southwest Botanical Province. One of only 35 biodiversity hotspots globally, this province represents just 0.23% of the Earth's land surface yet supports more than 12% of its rare and threatened flora. Bush Heritage Australia purchased the land in 2005 to protect this biodiversity and revegetate cleared areas across the site. In 2019, they chose Carbon Positive Australia to partner on this project because of our extensive experience restoring Western Australia's unique landscape. Since then, we have planted the site annually with a diverse mix of native trees and shrubs, and it's become one of our flagship projects.

KEY SPECIES

Eucalyptus loxophleba ssp. supralaevis, *Eucalyptus obtusiflora*, *Lamarchea hakeifolia*, *Melaleuca atroviridis*, *Melaleuca eleuterostachya*, *Melaleuca hollidayi*.

WHAT HAPPENED THIS YEAR

In July, a further 220 ha was planted at Eurardy, bringing the total area restored to 618 ha. More than 128,000 seedlings were hand-planted, representing 20 different species. With the wet winter experienced here in WA, we are excited to see the results of this year's planting.

WHAT'S NEXT?

We will be planting a further 250 ha at Eurardy next winter. Over the coming weeks, the team will travel up to the site to begin seed collection. This seed will be taken to the nursery to be propagated and germinated into seedlings. Lines will be ripped early near year ready for planting.



GABBIN, WA

BALARDONG NOONGAR COUNTRY

Est. 2021 | 40 ha | Biodiverse Sandalwood | 18,000 seedlings | 6 kg Native Seed

PROJECT OVERVIEW

Located in the northern Wheatbelt of WA, this site is part of a larger property owned by a local farming family. Before being cleared in the early 1900s, much of this region was covered with native Australian sandalwood (*Santalum spicatum*). Without the protection of trees and shrubs, the land has suffered significant wind damage. We are restoring the site with a mix of native species including *Acacias* which will act as 'hosts' to the hemiparasitic sandalwood trees.

KEY SPECIES

Acacia acuminata, *Acacia assimilis*, *Acacia brumalis*, *Acacia neurophylla*, *Acacia resinmarginea*, *Acacia yorkrakinesis*, *Hakea invaginata*.

WHAT HAPPENED THIS YEAR

During May, lines were ripped to loosen the soil and 6 kg of seed mix was sewn using a mechanical seeder. After some rain delays, the team from Avongro hand-planted 18,000 *Acacia acuminata* seedlings across the site in late July.

WHAT'S NEXT?

In November, team members Alice and Jess will head to the site to undertake initial survival monitoring. Sandalwood seeds will be hand-sown next winter along with extra seedlings to 'bulk up' any patchy areas. Once the plantings are sufficiently established (~3 years), sheep grazing will be allowed in the area to control weeds and reduce fire risk. The landholders will be able to collect fallen sandalwood nuts, and after 25 years can harvest the sandalwood trees which represent only a small portion of the total biomass of the site.



NIMBIN, NSW

WIDJABUL COUNTRY

Est. 2021 | 33.5 ha | Biodiverse Carbon | Natural Bush Regeneration

PROJECT OVERVIEW

Located in a medium to high-value koala habitat, this land was previously used to graze Dexter cattle and has been extensively cleared. This 33.5 ha restoration project will provide a wildlife corridor linking up remnant bushland in an ecologically significant area close to two national parks. Our aim is to restore the site to a thriving forest, increasing habitat for a range of endangered species (including koalas that have been regularly spotted on the property and in neighbouring areas), improving biodiversity, and encouraging further natural regeneration. We'll do this through bush regeneration techniques and the planting of a diverse mix of native dry rainforest, sclerophyll and riparian species,

WHAT HAPPENED THIS YEAR

Our planting partner, Future Forests, began bush regeneration work at the site in October, including the removal of invasive species such as camphor laurel and privet. The 6 ha allocated to bush regeneration comprises a naturally regenerating hoop pine forest and riparian zone along the stunning Webster's Creek.

WHAT'S NEXT?

Preparation of the remaining 27.5 ha will begin in March 2022. After the rainy season, more than 69,000 native seedlings will be planted across the site. One of the challenges of this site is the shoulder-high *Setaria* (a thick, tufted, African pasture grass) that covers much of the planting area. This grass is very hard to plant into and slashing is difficult due to steep slopes and hidden rocks. We're currently in conversation with an Indigenous organisation to investigate reducing the *Setaria* prior to planting using cultural burning. This method would not only suppress the *Setaria* but also encourage the germination of the native seed bank in the soil.



TOOTANELLUP, WA

MINANG NOONGAR COUNTRY

Est. 2021 | 25 ha | Biodiverse Carbon | 14.5 kg Native Seed | Owned by Green Skills

PROJECT OVERVIEW

This project is located near Rocky Gully in the Great Southern region of WA. The property is owned by fellow environmental not-for-profit, Green Skills, and is an important component of the Gondwana Link. We're working with Dr Geoff Woodall to restore the site and replicate the area's natural biodiversity by planting a mix of more than 65 native species. Restoration of this site will provide a strategic link between the Tootanellup Nature Reserve and a Water and Rivers Commissions Reserve.

KEY SPECIES

Acacia extensa, *Allocasuarina humilis*, *Agonis theiformis*, *Banksia armata*, *Bossiaea linophylla*, *Callitris pyramidalis*, *Daviesia cordata*, *Hakea prostrata*, *Hypocalymma angustifolium*, *Melaleuca spathulata*, *Viminaria juncea*, *Xanthorrhoea preissii*.

WHAT HAPPENED THIS YEAR

In June, the Mt Barker Noongar Rangers installed small mammal nesting boxes across the site to provide shelter for native fauna. The planting was originally scheduled for early July but was delayed by heavy rain and flooding in the area. In late July, lines were mechanically ripped to loosen the soil and 14.5 kg of native seed mix was planted across the site.

WHAT'S NEXT?

Alongside Dr Geoff Woodall, team members Alice and Jess will be onsite in the coming weeks to determine seed germination rates. Comprehensive monitoring will be completed early next year and if required, infill planting will be completed over the winter months.



ACTIVATE THE WHEATBELT - NARROGIN, WA

MINANG NOONGAR COUNTRY

Est. 2021 | Community Planting - Degraded Lands | 40,000 seedlings funded

PROJECT OVERVIEW

Activate the Wheatbelt (ATW) is a volunteer-based organisation that hosts tree planting parties across the Wheatbelt region of WA. Established in 2000, ATW creates unique events that combine music, art, food and local culture to connect rural and urban communities and repair degraded agricultural land. Working with ATW is part of our strategy to engage and support communities across the country to take practical action to restore their local environment and become more resilient to climate change.

OUR INVOLVEMENT

This year, we funded 40,000 native seedlings (*Eucalyptus loxophleba*) for ATW's planting event in Narrogin. The owner of the property is a local farmer who is concerned about the impact extensive clearing has had on the land. The aim of the planting is to create ecological corridors that connect to the remnant bushland areas adjacent to the property. The seedlings were hand-planted by more than 150 volunteers, including team members Jess, Alice and Catherine, over the July long weekend.

WHAT'S NEXT?

The ATW team will be returning to the site soon to observe and relay the initial success of the planting. We have committed to funding a further 80,000 native seedlings which will be planted at the same property next year. The aim is to increase biodiversity and restore an area of the farm that cannot be accessed by machinery. The seedlings will be hand-planted by volunteers over two consecutive weekends in June.



Community
Project



TJUNTJUNTJARA, WA

ANANGU COUNTRY

Est. 2021 | Community Planting - Remote / Indigenous Lands | 1,050 seedlings

PROJECT OVERVIEW

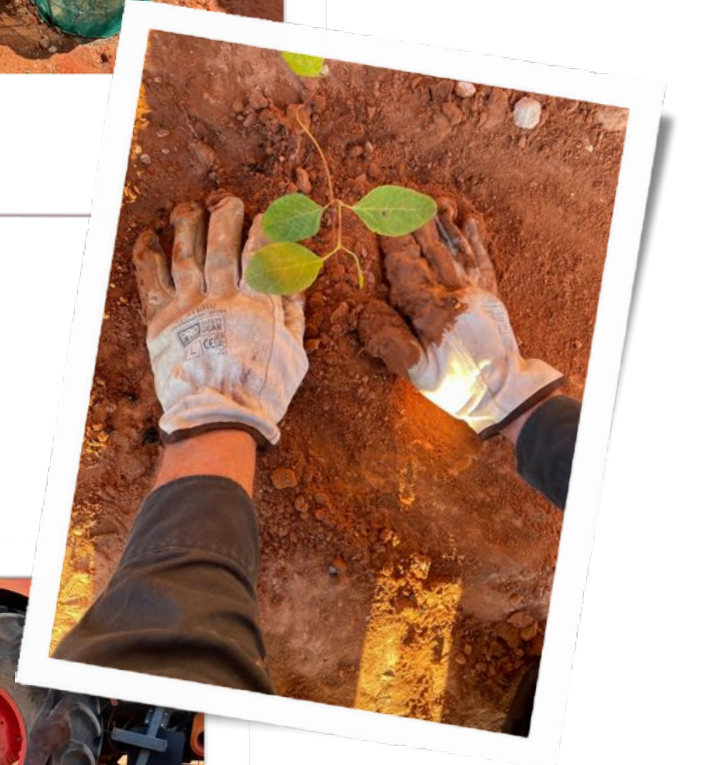
Tjuntjuntjara is a remote Indigenous community, 17 hours east of Perth. The women of the community wanted to "green Tjuntjuntjara" to alleviate dust, provide shade, and enhance the liveability and natural beauty of the town. They also wanted fruit and nut trees in their gardens to provide more fresh food for the community. A volunteer from the Women's Centre contacted Carbon Positive Australia to see if we would like to be involved in this project.

OUR INVOLVEMENT

In September 2021, Louise (CEO) and Ian (Chairman) travelled to Tjuntjuntjara along with eleven other self-funded volunteers to help "green Tjuntjuntjara". The trip required significant planning to ensure the group had everything they'd need for the long journey and stay. Over eight days, more than 250 native trees and fruit trees were hand-planted across the town. The response from the community was amazing, with everyone from the youngest to the oldest lending a hand. The volunteers and community members dug holes for the trees mainly by hand and constructed tree protectors from wire and shade cloth. This should protect them from cars and playful creatures, including children and dogs.

WHAT'S NEXT?

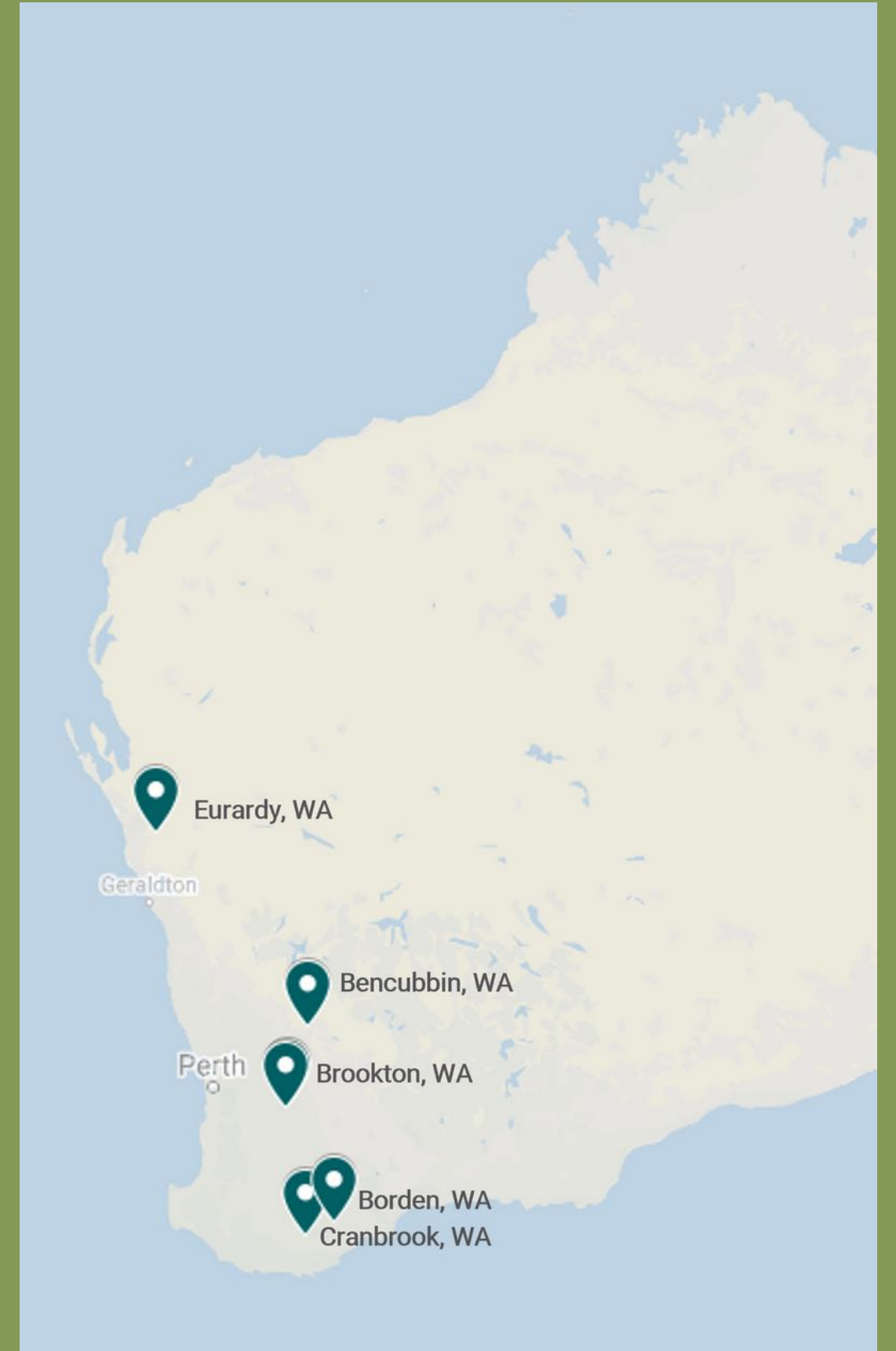
The remaining trees were planted by the local rangers. We look forward to staying connected with the community and hearing how the trees are growing. Future plans include working with the community to establish a larger plant nursery for propagating local seeds at the Ranger Centre.



Community
Project



MONITORING



MONITORING UPDATES



BENCUBBIN, WA

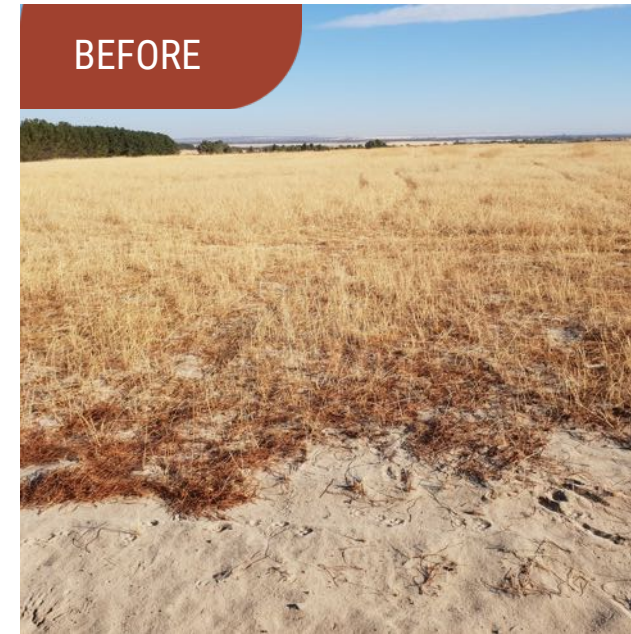
Balardong Noongar

Project type: Biodiverse Sandalwood

Planted: 2018

Size: 22ha

In July 2021, Dr Peter Ritson and CPOZ team members Alice and Jess completed comprehensive monitoring of the site. While there was some evidence of pest damage (rabbits and kangaroos) the average stocking density of the site has significantly improved since last year - from 341 trees/ha to 840 trees/ha. Some of the sandalwood seed planted in 2019 and 2020 has begun to germinate, with an average of 22 trees per hectare. More seed was planted this year to increase this density. An additional 3,000 sandalwood host trees (*Acacia acuminata*) will be planted next winter with further sandalwood infill as required.



BROOKTON, WA

Balardong Noongar

Project Type: Saltland Carbon and Biodiverse Sandalwood

Planted: 2019, 2020

Size: 53 ha

In April, Carbon Positive Australia team members Jess and Alice joined Dr Peter Ritson onsite at Brookton to monitor the progress of seedlings planted in 2019 and 2020. The team monitored more than 30 plots across the planted area (approx. 500m² each), noting tree height, stem width, species and survival. Overall, survival rates varied across the plots, largely dependent on salinity and wind erosion. In the highly saline areas, the *Atriplex semibaccata* seemed to show the most successful growth rates. The tallest tree measured in the biodiverse area was an *Acacia acuminata* (Jam Wattle) at 2.5 metres.

MONITORING UPDATES



BORDEN, WA

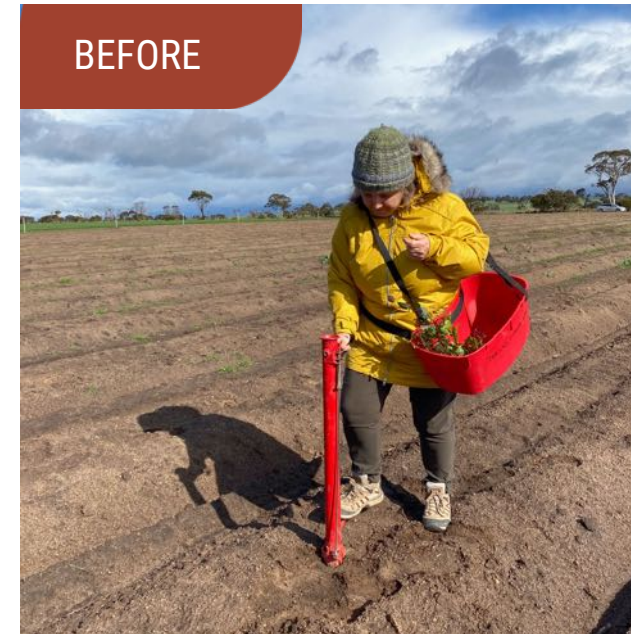
Balardong Noongar

Project type: Saltland Carbon

Planted: 2018

Size: 10 ha

In July 2020, a selection of salt-tolerant native seedlings was planted at this site including several *Melaleuca*, *Acacia* and *Eucalyptus* species. The Threshold Environmental team were on-site in April 2021 to monitor the survival and growth of the seedlings. The site is showing favourable progress with the average stocking density estimated at 1,880 trees/ha. We will be returning to the site early next year to undertake further monitoring.



CRANBROOK, WA

Minang Noongar

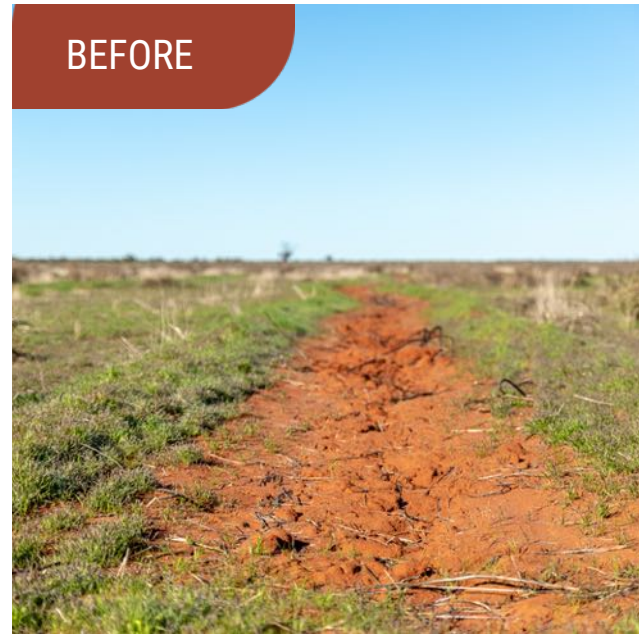
Project Type: Biodiverse Sandalwood

Planted: 2020

Size: 65 ha

This site was planted with a combination of seedlings and direct seeding in winter 2020. It is a highly biodiverse planting with more than 90 different species. In April 2021, the team from Threshold Environmental monitored site progress including germination, growth and stem count. Results show a total of 500,000 shrubs and trees have established across the site, including *Acacia* species which will act as hosts for the sandalwood. Sandalwood seeds will be hand-sewn across the site next winter.

MONITORING UPDATES



EURARDY RESERVE, WA

Nanda Country

Project type: Biodiverse Carbon

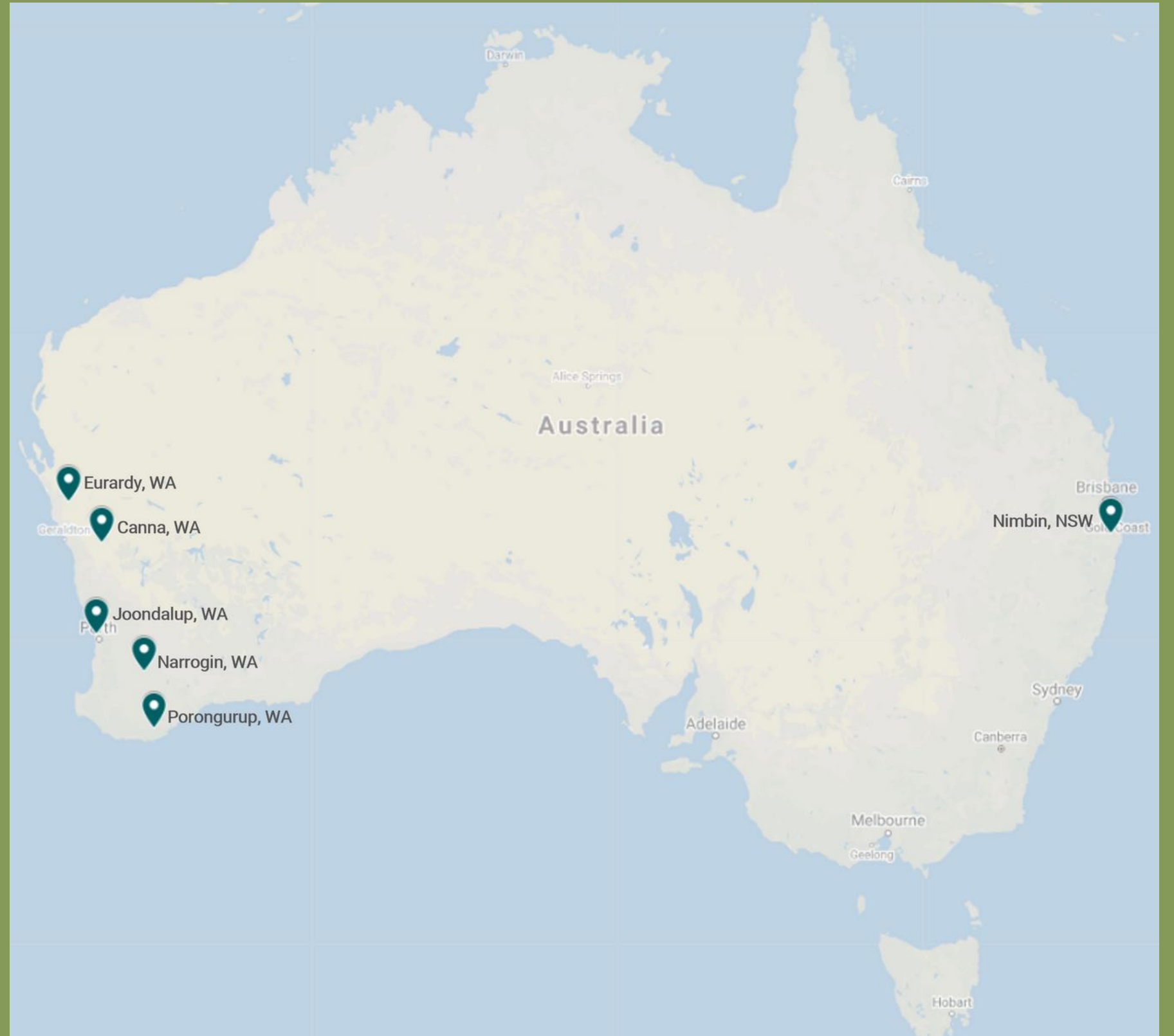
Planted: 2018, 2019, 2020, 2021

Size: 620 ha

Twelve permanent monitoring plots have been established across the Eurardy site, each covering a total area of 0.22 ha. Tina Parkhurst from Bush Heritage Australia is conducting the monitoring every 6 months. The most recent monitoring results show an average stocking density of 417 trees/ha for all species in the 2019 planting area, and 597 trees/ha in the 2020 area. The next monitoring report is due in the coming weeks. With above-average winter rainfall, we expect to see strong growth and a potential need for further weed control.



2022 PLANTING PROJECTS



2022 PROJECT ANNOUNCEMENTS

CARBON PROJECTS



Carbon
Project

NIMBIN, NSW

Traditional owners: Widjabul

Project type: Biodiverse Carbon

Size: 29 hectares

This ecological restoration site will link up remnant bushland close to two national parks and increase habitat for endangered species, including koalas. Natural bush regeneration has already begun at this site. Next year we will be planting approximately 69,000 native seedlings to restore natural habitat and biodiversity to the area.



Carbon
Project

CANNA, WA

Traditional Owners: Badimaya

Project Type: Ecological Restoration

Size: 300 hectares

This planting project will restore highly degraded agricultural land. We will be using an experimental direct seeding method to plant a mix of native species to restore connectivity within the landscape. The return of native flora and fauna will be assessed using citizen science, the results providing valuable scientific data that will inform other restoration projects in this landscape. Although this project will sequester carbon, due to the experimental planting method, it will not be registered with the Emissions Reduction Fund.

2022 PROJECT ANNOUNCEMENTS

CARBON PROJECTS



Carbon
Project

EURARDY RESERVE, WA

Traditional Owners: Nanda

Project Type: Biodiverse Carbon

Size: Additional 250 hectares

This Reserve is owned by Bush Heritage Australia and is located within the Southwest Botanical Province - one of only 35 global biodiversity hotspots. We have already planted more than 615 ha at Eurardy and are aiming to restore a total of 1,350 ha over the coming years. In 2022 we will be planting an additional 250 ha on the yellow-soils area of the site. Trials on this soil have proven successful and approx. 150,000 native seedlings will be planted next winter.



Carbon
Project

PORONGURUP, WA

Traditional Owners: Minang Noongar

Project Type: Biodiverse Carbon

Size: 30 ha

This site is located adjacent to the Porongurup National Park, an area home to more than 750 native plant species. Previously cleared for agriculture, the landholder wishes to restore biodiversity and canopy cover to the property, ultimately providing a place for tourists to camp amongst the trees. We will be direct seeding this site with a biodiverse mix of native species. Lines will be ripped during autumn, and seeds will be sown during the winter months.

2022 PROJECT ANNOUNCEMENTS

COMMUNITY PROJECTS



ACTIVATE THE WHEATBELT - NARROGIN AND WANDERING, WA

Traditional Owners: Minang Noongar

Project Type: Community Project - Degraded Lands

Details: Funding 100,000 seedlings

We're thrilled to again be partnering with the team at Activate the Wheatbelt, a community organisation that runs volunteer tree plantings to help restore WA's Wheatbelt region. We will be funding a total of 100,000 trees which will be planted across two sites. 20,000 trees at Wanderosa Vegan Retreat & Animal Sanctuary (Hastings) to revegetate a saline creek line through the centre of the 40 ha property. A further 80,000 trees will be planted on a working farm near Narrogin, creating ecological corridors and connecting up remnant bushland.



MIYAWAKI URBAN FORESTS, JOONDALUP WA

Traditional Owners: Whadjuk Noongar

Project Type: Community Project - Urban Lands

We will be working with Dr Grey Coupland and the local community to develop mini urban forests across the suburb of Joondalup in areas that are particularly impacted by the urban heat island effect. These fast-growing, dense, low maintenance native forests help to cool thermal hotspots and provide shade and amenity. These microforests will also provide habitat, reduce the effects of stormwater runoff, contribute to cooling the area, and help seed rainfall.

Part 2:


RESEARCH & INNOVATION

CARBON FOOTPRINT CALCULATOR
YOUR FOOTPRINT. AUSTRALIA'S TREES. OUR FUTURE.

CALCULATOR RESULTS

Your household's carbon footprint for the past 3 months is

2.00 tonnes
of carbon dioxide equivalent (tCO₂e). ?



The average Australian household has an annual carbon footprint of approximately 15-20 tCO₂e.

According to the UN, to limit global warming to 1.5 degrees by 2050 we must limit our per-person emissions to 2 tCO₂e per year.

Now that you know your number, you can reduce, remove & restore:

- **Reduce** your emissions using our tips below.
- Support our reforestation projects which **remove**

CARBON FOOTPRINT CALCULATIONS



As an organisation, we provide free tools to help individuals, businesses and other organisations calculate their carbon footprint.

In May 2021, we launched our new and improved online [Carbon Footprint Calculator](#). Designed for individuals and households, this user-friendly version of Australia's first carbon calculator is based on Australian emissions factors and provides a transparent and accurate calculation. By providing these easy-to-use tools, we hope to empower all Australians to understand and reduce their carbon footprint and help restore Australia's landscape through our reforestation offsets.

The calculator came into being thanks to support from Lotterywest and the design and build skills of Anthologie (a Perth-based creative agency). Since launching, more than 7,500 users have calculated their footprint, offsetting over 1,500 tonnes of CO₂e. Overall, feedback on the calculator has been overwhelmingly positive - it was even featured on the [ABC news!](#)

Our goal is for 1 million Australians to calculate their footprint over the next 12 months. If you haven't calculated yet, we strongly encourage you to try it out. As well as your calculation there are lots of interesting facts throughout the calculator as well as tailored insights to help you reduce your impact over time.

During the year, we have also updated our Excel-based carbon calculators for events and businesses. These calculators are being used by organisations that are working towards becoming carbon positive.

We are always looking for ways to improve our calculators and welcome any feedback or suggestions.



CARBONCARE™ VOICES



In 2020 we began CarbonCare™, a five-year research project supported by Lotterywest, which seeks to boost community understanding of carbon farming.

The first phase of the project, CarbonCare Voices, surveyed more than 300 carbon market stakeholders, including carbon project owners, broadacre landholders, and potential carbon offset buyers. The output of this study, a detailed, peer-reviewed report, was released in May 2021.

To launch the report, we hosted a virtual seminar that included presentations and a Q&A session with those involved in the research.

The research provides a snapshot of the current state of the Western Australian carbon market and its development through the lens of market participants including insights from twelve agriculture industry stakeholders.

Eight recommendations came out of the report, and we will be working with the landcare sector, landholders, and other stakeholders to begin implementing these recommendations over the coming years.

To accompany the report, we also released five case studies, representing a range of voices from within the carbon farming industry.

You can read the report and case studies on our [website](#).



CARBONCARE™ CO-BENEFITS STUDY



As a part of the CarbonCare project, we wanted to be able to demonstrate the financial value of the environmental and social co-benefits of carbon revegetation projects.

The CarbonCare™ Co-benefits assessment and valuation study was undertaken by Point Advisory using data from Hill View, a carbon restoration site planted in 2008. The Hill View site is part of a much larger initiative, the Yarra Yarra Biodiversity Corridor (YYBC). This project is registered with the International Gold Standard Foundation and the land is owned by Auscarbon Pty Ltd.

In addition to carbon, the project was found to generate significant environmental (biodiversity, water, soil), economic (local employment) and social (indigenous cultural heritage) benefits. The study was able to extrapolate a financial value over and above a carbon price for both the planting site at Hillview and the wider Yarra Yarra Biodiversity Corridor. The biodiversity value alone has been estimated at between \$2m and \$4.5m over the life of the project.

This was the first time in Western Australia that such a study had been undertaken. We hope that both the values and the broader recommendations will be of value to stakeholders, encourage future biodiverse restoration and planting projects, and promote further study in this area.

The full report is available on our [website](#).



PRESS & APPEARANCES

Our education work means encouraging and empowering everyone to become carbon positive. You can read/listen to stories about our work in the following media.

Radio

- ABC Radio – In Focus with Jessica Strutt: What is Carbon Positive and How Can You Reduce Your Footprint, featuring Louise Tarrier, CEO ([What is carbon positive and how can you reduce your footprint? - Focus - ABC Radio](#))
- Curtin Radio (Curtin FM 100.1): Afternoons with Jenny Seaton, featuring Louise Tarrier
- Wheatbelt Radio: Carbon Positive, featuring Louise Tarrier
- RTR FM: Calculating Carbon Positivity, featuring Catherine Patterson, Head of Partnerships ([Calculating carbon positivity with Catherine Patterson « RTRFM / The Sound Alternative](#))

Podcasts

The West Live Podcast : “Carbon Positive – What Is it?”, featuring Louise Tarrier, CEO
Link: [Carbon Positive - what is it? - The West Live - Omny.fm](#)

Eco Chat with Laura : “How to Offset Your Carbon Emissions”, featuring Louise Tarrier
Link: <https://lauratrottaecoachat.libsyn.com/155-how-to-offset-your-carbon-emissions>

How to Live Slow: “Going Carbon Positive”, featuring Louise Tarrier
Link: <https://www.howtoliveslow.com/episode-42-going-carbon-positive/>

Stride Podcast: "Are You Carbon Positive", featuring Louise Tarrier
Link: [30: Are You Carbon Positive? - Striding Forward | Podcast on Spotify](#)

The C Word Podcast with Carla & Carl: "Carbon Positive Australia with CEO Louise Tarrier", featuring Louise Tarrier
Link: [Episode 75 - The C-Word Podcast - CEO Louise Tarrier - Carbon Positive Australia - The C-Word Podcast | Podcast on Spotify](#)



PRESS & APPEARANCES

MAGAZINES

- The Little Magazine: "Towards a more positive future"
- The Australian Farmer (online): "Carbon Farming Risk Management – A CarbonCare Cash Study from Rural SW Western Australia"
- Slow Journal (print): "Carbon Positive Australia - Celebrating 20 Years of Land Restoration"
- Nourish Magazine (print): "Future Proof Your Footprint"
- The Green Hub (online): "What's Your Carbon Footprint? Use this Calculator to Find Out."
- Re:Think Magazine (online): "Reflect, Reduce, Restore by the team at Carbon Positive Australia"
- Coles Health & Beauty Magazine: "A Natural Wonder"

NEWS COVERAGE

ABC: "Demand Soars for Carbon Offset Services..."

Link: <https://www.abc.net.au/news/2021-04-04/australian-businesses-take-lead-on-climate-change/100039746>

ABC: "Households are being urged to curb their carbon emissions – but it's businesses and governments that can make the biggest difference"

Link: <https://www.abc.net.au/news/2021-05-30/carbon-neutral-households/100165072>

Retail World Magazine: "Buy One, Plant One with Garnier"

Link: <https://retailworldmagazine.com.au/buy-one-plant-one-with-garnier/>

Beauty Directory (Beauty Eco): "Everything We Know About Garnier's Latest Initiative"

Link: <https://www.beautydirectory.com.au/news/beauty/everything-we-know-about-garniers-latest-initiative>

Eco Voice: "Carbon Positive Australia Joins SmartGroup's National Vehicle Carbon Offset Program"

Link: <https://www.ecovoice.com.au/carbon-positive-australia-joins-smartgroups-national-vehicle-carbon-offset-program/>

The West: "Car Buyer's Can Offset Carbon Emissions"

Link: [Car buyers can now offset carbon emissions by contributing to tree planting in WA's Eurardy Reserve | The West Australian](https://www.thewest.com.au/news/carbon-offset-car-buyers)

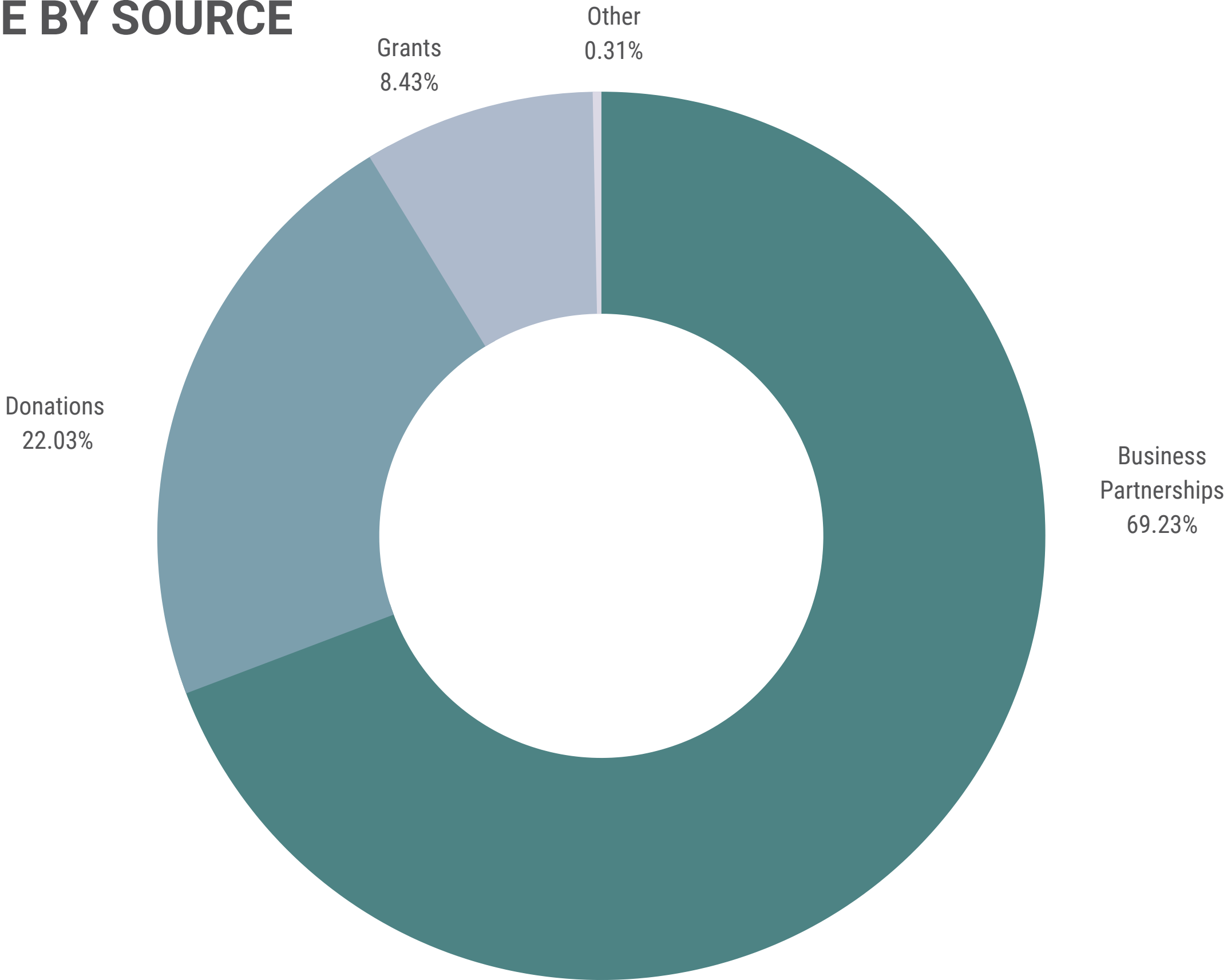


A close-up photograph of a bottlebrush plant. The image shows several bright pink, cylindrical flower heads (cymes) composed of many small, individual flowers. The leaves are long, narrow, and green, with a slightly waxy texture. The background is a clear blue sky. The overall composition is a dense cluster of foliage and flowers.

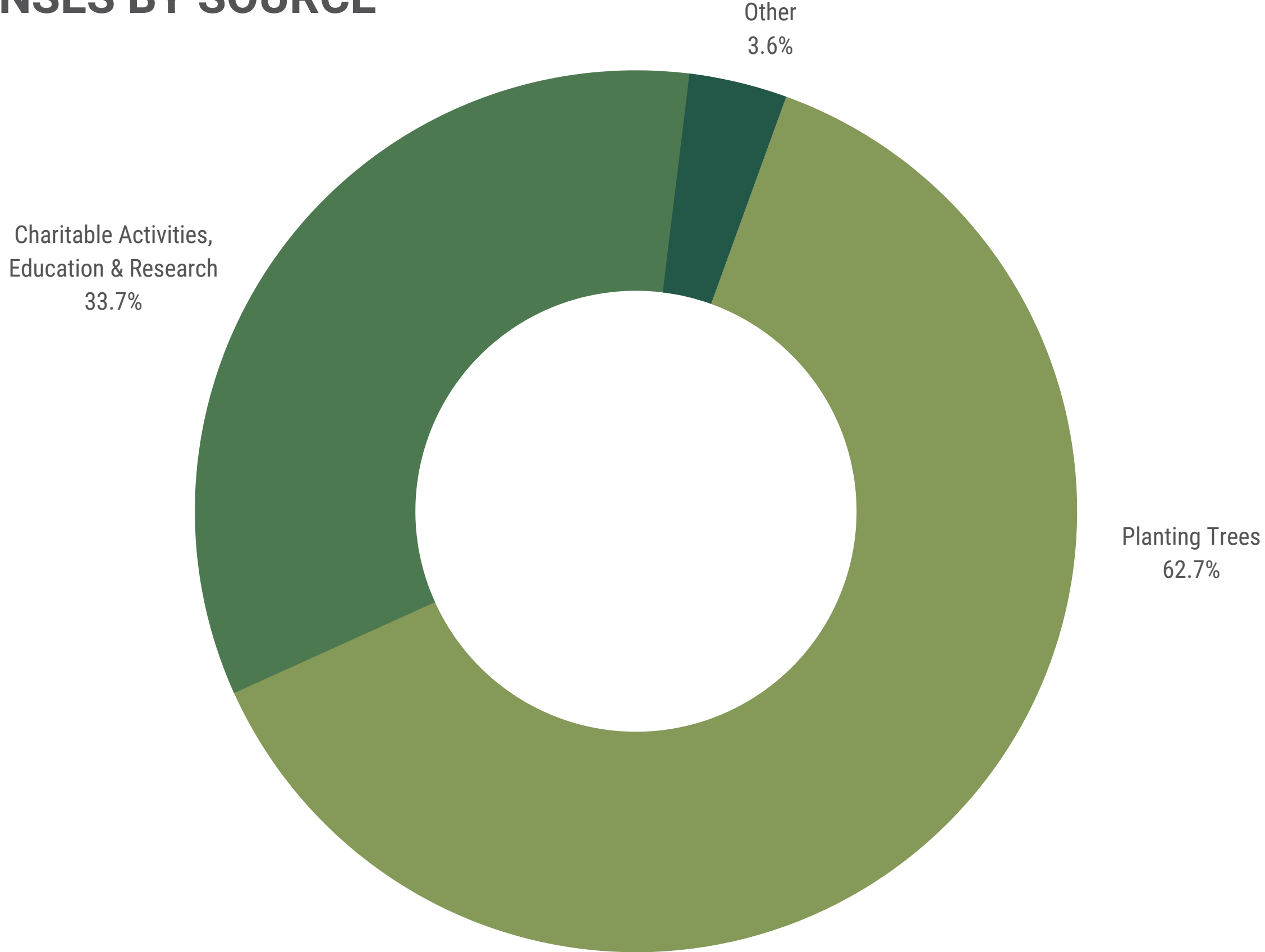
Part 3:

FINANCIALS

2021 INCOME BY SOURCE



2021 EXPENSES BY SOURCE



GRANT FUNDING

LOTTERYWEST



In 2020, we received support from Lotterywest for our CarbonCare™ project. This support is for a five year period, providing funds for research into carbon farming participation, the development of carbon planting demonstration sites, and an online carbon calculator.

In May 2021, we released our CarbonCare™ Voices report. This report summarises a year's worth of research looking to better understand the carbon market, particularly in Western Australia. It has found a genuine interest in carbon farming and a desire for enhanced understanding from all stakeholder groups, including landholders, potential offset buyers, and investors.

The grant has also supported an assessment and valuation study relating to the co-benefits of carbon restoration projects. The CarbonCare™ Co-Benefits report was released in May 2021.

At the end of May 2021, we released our new and improved Carbon Footprint Calculator. The purpose of this free tool is to empower all Australians to reflect on their lifestyle, reduce their impact and offset their carbon footprint.

We are extremely grateful to Lotterywest for supporting this important work and look forward to sharing further information on how the funds have been used to increase carbon farming participation.



Part 4:

OUR SUPPORTERS



2021 SUPPORTER SURVEY

We would like to extend our gratitude to all of our supporters that completed last month's donor survey. We have really enjoyed analysing the results and, in particular, reading your comments. The feedback will help us prioritise future planting projects, educational tools and other resources, maximising the impact of your donations.

Top Reasons You Donate:

- To offset carbon emissions
- To increase biodiversity and restore natural habitats
- To prevent and reduce the impact of climate change

You Really Like Our:

- Quick Offsets
- Regular Donations
- E-Cards

You Want To Learn More About:

- Reforestation and the health of Australia's landscape
- Community planting projects and opportunities
- The relationship between trees and climate change

You'd Like To See:

- The option to donate to a specific project
- Even more photos and videos from our project sites
- Educational resources about native plant species



Contact Us

For any questions or clarifications on our report.

Website

carbonpositiveaustralia.org.au

Email

community@carbonpositiveaustralia.org.au

Phone Number

1300 857 970

Address

Unit 11, 2 Dehli Street
West Perth, WA, 6005

Social

[@carbonpositiveaus](#)

