



Running Postman



Australian Plants Society - Melton & Bacchus Marsh Inc



In this issue:

Contents

Monthly Meeting Recap - May.....	2
June Meeting Teaser:	4
Plant Profile:	5
Diplolaena.....	5
Upcoming Events.....	8
Contacts:.....	10

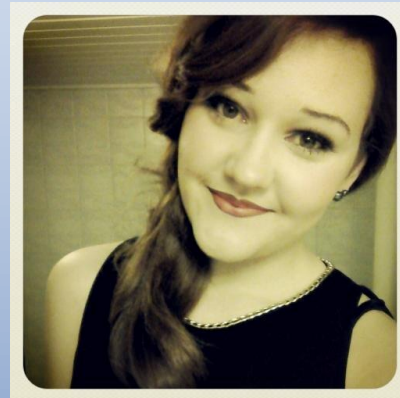
APS VIC 60th Anniversary

Saturday 17th of June

Registrations close
Wednesday 14th.

Save the Date...

- Next meeting:
- June 29 ****Thursday 10am****:
 - Kathryn FitzGibbon will talk to us about what a Landscape Architect is, and the road she took to becoming one.
 - *Lunch after the meeting*



Coming Up...

- Next meeting on 23rd of August (none in July)
- Lots of other events, refer to pages 8 and 9 for more...

Monthly Meeting Recap - May

Grass – Alan Bedgood

This month, we learned about grasses, their types, definitions, uses and a host of other information.



In an interactive meeting, Alan brought along a selection of grasses and educated us on how to identify them.

Sedges have edges,
rushes are round,
grasses have knees
that bend to the ground.

Sedges have edges,
rushes are round,
grasses are hollow
what have you found.



Grasses encompass a lot of food sources, such as barley, rice, triticale, wheat, corn, sorghum etc. This also includes bamboo, a vital food source for the giant panda, but as we discovered, bamboo can be used in a structural environment (???) in some countries. (see next photo)



Some of the many uses for grasses!

[Contact us](#) [Report abuse](#) [Log in](#)

[Home](#) » [Fact Sheets](#) » [Themeda](#) » [Themeda triandra](#)

FACT SHEETS

- [Acrachne](#)
- [Acroceras](#)
- [Agrostis](#)
- [Aira](#)
- [Alexfloydia](#)
- [Alloteropsis](#)
- [Alopecurus](#)
- [Amelichloa](#)
- [Ammophila](#)
- [Amphibromus](#)
- [Amphipogon](#)
- [Ancistrachne](#)

Themeda triandra

Themeda triandra Forsk. *Fl. Aegypt.-Arab.* 178 (1775).

Classification. (GPWG 2001) : Subfamily Panicoideae. Andropogoneae.

Type of Basionym or

Protologue Information: Yemen: Al Hadiyah, 1763, *Forsskål s.n.* (HT: C (destroyed)).

Recent synonyms:

T. australis.

Key references

(books and floras): [1810]. R.Brown, *Prodromus* (200 as *Anthistiria australis*), [1878] G.Bentham, *Flora Australiensis* 7 (542 as *Anthistiria ciliata*), [1952] C.A.Gardner, *Flora of Western Australia* 1 *Gramineae*

There are many websites with information on grasses including AusGrass, Florabase, FloraNT, plantnet, efloraSA etc.

An enthusiastic thank you to Alan for his fantastic presentation.

June Meeting Teaser:

Reminder that this meeting is being held on Thursday morning, 10am, on June 29.

Kathryn FitzGibbon - Story of a keen child gardener to Landscape Architect in Local council.

I am a Landscape Architect working for Melton City Council. I have been working there for 7 months and have been enjoying every minute of it. I will be giving a talk on my journey from backyard gardening to university, my experience living in Denmark and the joys of working in local council. I will share some exciting projects we are working on in Melton and how we hope to contribute to Melton's future.

Ed: My little Google fingers have located an article involving Kathryn with what is described as an 'outstanding feature at the Melbourne Grand Designs Show 2012, a direct landscape concept created by the Landscape Design students of RMIT'.

The challenge set was to create a set of 1:1 installations that celebrate and challenge innovative Landscape Architectural Design.



Kathryn (left) with her team and the winning design.

The rest of the article can be found here:

<http://www.outdoordesign.com.au/news-info/Grand-Outdoors/1201.html>

After the meeting, you are welcome to come to lunch just around the corner at the **Q Lounge**, 20 McKenzie Street.

Plant Profile:

Diplolaena

Diplolaena; from Greek *diploos*, double and *chlaina*, a cloak referring to the two rows of bracts around the flower heads.

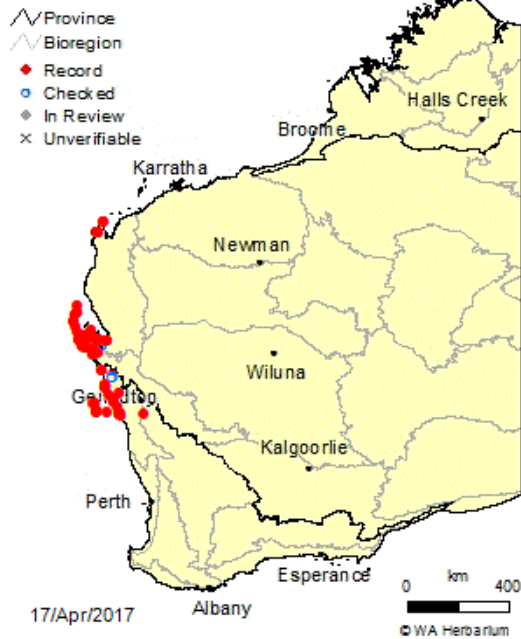
Species include:

- *Diplolaena andrewsii* Ostenf.
- *Diplolaena angustifolia* Hook. - Yanchep Rose 'Orange Urchin', or Western Rose
- *Diplolaena cinerea* Paul G.Wilson
- *Diplolaena dampieri* Desf.
- *Diplolaena drummondii* (Benth.) Ostenf.
- *Diplolaena eneabensis* Paul G.Wilson
- *Diplolaena ferruginea* Paul G.Wilson
- *Diplolaena geraldtonensis* Paul G.Wilson
- *Diplolaena grandiflora* Desf. Meaning "large-flowered", common name: Wild Rose or Tamala Rose
- *Diplolaena graniticola* Paul G.Wilson
- *Diplolaena leemaniana* Paul G.Wilson
- *Diplolaena microcephala* Bartl. - Lesser Diplolaena. with small heads, referring to the size of the flower clusters.
- *Diplolaena mollis* Paul G.Wilson
- *Diplolaena obovata* Paul G.Wilson
- *Diplolaena velutina* (Paul G.Wilson) Paul G.Wilson

Native to Western Australia, the *Diplolaena* species are dotted in clusters across the state. The species in my garden is the *grandiflora*, grafted onto *Correa* rootstock.



Diplolaena grandiflora



Diplolaena grandiflora grows to between 0.5 and 3 metres high and has an erect habit. In a period between late autumn and spring, it produces showy, upright or pendant flowers. These have a cluster of red stamens in the centre, surrounded by pinkish-red bracts. The leaves are ovate and are up to 5 cm in length and are dark green on the top and downy on the undersides.

Part of the *Rutaceae* family, it prefers part shade, good drainage (on its own legs) and will appreciate a haircut to promote more flowers.

A lovely shrub, mine is making fast friends with the white version of *Kennedia prostrata* as you can see above. With soft green to grey foliage and striking veins, it is contrasted by bright orange flowers and a welcome sight in the cooler months.



Scientific Name:	Diplolaena grandiflora
Family:	Rutaceae
Common Name:	Wild Rose
Other Common Names:	Tamala Rose
Plant Type:	Small shrub
Height:	0.5 ~ 3 metres
Width:	1 ~ 1.5 metre
Flower Colour:	Red, Orange
Flowering Time:	Spring, Autumn, Winter
Ph Level:	Acid, Neutral
Soil Type:	Loamy, Sandy loam
Plant Environment:	Courtyard, Container growing, Cottage garden, Flower garden
Climate Zone:	Warm temperate, Mediterranean
Light:	Sunny, Light shade
Growth Habit:	Evergreen, Spreading
Lifespan:	Annual
Soil Moisture:	Well-drained
Special Uses:	Cut flower
Attracts Wildlife:	Bees, Nectar eating birds, Butterflies, Other insects



Upcoming Events

16 June – Maroondah group will have special guest speaker Lyndal Thorburn of the Eremophila Study Group. 8pm; more info at <http://australianplantsoc.wixsite.com/maroondah>

17 June 2017 from 10.00 am to 5.00 pm. Celebration of 60 years of APS Vic hosted by APS Melton with the Committee of Management meeting commencing 10.00 am at Community Centre, 238 High St, Melton. APS Melton are also organizing garden tours by the Friends Group of the Melton Botanic Gardens. The 60th celebrations will be part of an afternoon tea.

24 & 25 June APS Ballarat District Group Winter Plant Show and Sales. From 10.30 am to 3.30 pm, at the Robert Clark Horticultural Centre, Ballarat Botanic Gardens. A display of flowers and foliage and a large range of plants for sale. Hand painted floral art, books sales and other stall holders.

4 to 9 July 2017 – Australasian Plant Society (UK) presence at 2017 RHS Hampton Court Palace Flower Show

22 & 23 July - Cranbourne Friends Royal Botanic Gardens Victoria Winter Plant Sale – 10.00 am to 4.00 pm. (Mel 133 K10) (flyer next page)

19 & 20 August 2017 – Field Naturalists Club of Victoria Biodiversity Symposium on Marine Biodiversity in the 21st Century. Details soon on website www.fncv.org.au.

2 September APS Wilson Park Plant Sale, Wilson Botanic Park, Princes Highway, Berwick. 9 am to 4.00 pm (flyer next page)

9 & 10 September APS Yarra Yarra Australian Plants Expo, Eltham Community & Reception Centre.

16 & 17 September APS Wangaratta host APS Victoria Quarterly Gathering and AGM

23&24 September Bendigo Native Plants Group Australian Flower Show, Kangaroo Flat Primary School, 60-80 Olympic Parade, Kangaroo Flat Bendigo (new details 5/17). Plants, pottery & book sales. 9.30 am to 4.30 pm. Entry \$3.

8 October – Warrnambool and District Group are coming to Melton and Bacchus. They will tour the MBG on the Saturday, then we have been invited by Cathy Powers to tag along for a trek through her part of the world in the Brisbane Ranges.

Reminder:

The photo competition will be part of the November meeting. It is getting cold but it is also the time when some plants like to get out and show themselves off! Rug up and keep snapping.

Categories will be published in the next newsletter.



Cranbourne Friends Royal Botanic Gardens Victoria Inc.

GROWING FRIENDS
WINTER 2017
PLANT-SALE



Saturday 22 & Sunday 23 July
10.00am – 4.00pm

Royal Botanic Gardens Victoria -Cranbourne

Plantlist available 1 week prior to sale www.rbgfriendscranbourne.org.au

Australian Plants Society - Wilson Park (Berwick)



AUSTRALIAN NATIVE
PLANT SALE



Wilson Botanic Park Berwick
Princes Hwy, Berwick (Melways 111B7)

Saturday 2 September 2017
9:00 am to 4:00 pm



Native plant stalls Raffle
Specialist book stall Flower display

plantsale@apswilsonparkberwick.org.au

www.apswilsonparkberwick.org.au

[Australian Plants Society - wilson park berwick](https://www.facebook.com/AustralianPlantsSociety-wilsonparkberwick)

Note: Cash Sales Only



YEA
GARDEN EXPO

23 & 24 SEP 2017
10AM-4PM

Location: Yea Racecourse
Only an hour from Melbourne...

- Native & flowering plants
- Garden sculptures
- Motorised barrows & vehicles
- Garden tools & vegetable bins
- Seedlings
- Mulch, fertilisers & compost
- Ride-on & push mowers
- Nurseries
- Designers & Contractors
- Mulchers
- Deciduous & Ornamental trees
- Garden books
- Plant Creche * NEW *
- Speakers Program * NEW *
- And much more.....

FOOD & DRINKS AVAILABLE
FACE PAINTING TOO!

Entry \$5 for adults - kids FREE

FREE PARKING

Contact: yeagardenexpo@optusnet.com.au

Contacts:

Australian Plants Society – Melton & Bacchus Marsh Inc.

Incorporated in Victoria: A0026204P

ABN: 68 053 689 781

APS Melton & Bacchus Marsh Committee 2016/17

President *Christine Huf* *0412 081 074*

Vice President *Russell Wait* *0428 388 211*

Secretary/Public Officer *David Pye* *email: apsmeltonbacchus@gmail.com*

Treasurer *Julianne Diwell*

Committee *Andrea Kellett, Lucille McCarthy, (vacant)*

Newsletter Editor *Christine Huf* *0412 081 074* *email: c.phot.804@gmail.com*

All contributions to the newsletter are gratefully received. Please send a word document and photos to the group's email address. If you have any questions, feel free to contact me via email or phone. I am also happy to research a subject for an article if you give me a topic you would like to see explored.

Postal address:

PO Box 946

Bacchus Marsh VIC 3340

MEETINGS: 4th Wednesday of the month except July and December (doors open at 7.30pm)

VENUE: Dunvegan Cottage, Willows Historic Park
Cnr Reserve Rd & Nixon St, **Melton** **Melways:** 337 C9

URL for relevant internet websites:

Website: www.runningpostman.org.au

APS Victoria website : <http://www.apsvic.org.au/>

ANPSA website: <http://anpsa.org.au>

Disclaimer: Any errors in this publication are by the editor.