

Hugonia jenkinsii F.Muell.

Family:
Linaceae

Mueller, F.J.H. von (1865) *Fragmenta Phytographiae Australiae* 5: 7. Type: In silvis ad sinum Rockingham Bay, D'Almeida

Stem

Vine stem diameters to 8 cm recorded. Blaze darkens markedly on exposure. Vascular rays visible but not conspicuous.

Leaves

Leaf blades about 8-16.5 x 2-5 cm, petioles about 0.2-1 cm long. Stipules small and inconspicuous, about 1 mm long. Tendrils or hooks resemble rams horns in shape.

Flowers

Inflorescence about 10-11 cm long. Flower buds orange-red, open flowers orange-yellow. Flowers about 15 mm diam. Flowers emit an odour resembling that of the fruit of purple passion fruit (*Passiflora edulis*). Outer sepals about 3 x 2 mm, inner sepals about 3 x 4 mm. Petals about 7-12 mm long. Stamens 10, filaments about 4-5 mm long. Anthers about 1 mm long. Ovary about 3 mm long. Styles and stigmas 5, each style about 2 mm long. Ovules two per locule, placentation apical.

Fruit

Fruits ellipsoid to almost globular, about 12-15 x 8-15 mm. Endocarps 5, shaped and oriented like the segments of an orange, each about 7-12 x 3-5 mm. Endocarps tough, hard to cut. Embryo about 6-7 x 1.5-2 mm. Cotyledons about 5.6 mm long. Radicle straight, about 1 mm long.

Seedlings

Cotyledons narrowly elliptic, about 11-14 x 3 mm. First pair of leaves +/- elliptic-ovate, about 10 x 5 mm, leaf base attenuate, margin toothed. At the tenth leaf stage: seedling glabrous, leaf blade oblanceolate, about 25 x 7 mm, apex acute or acuminate, base attenuate, margin serrulate with about 20 teeth on each side; midrib raised on the upper surface. Stipules +/- 3-fid with a basal tooth on each side. Lower surface of the leaf blade surface clothed in pale, gland-like structures which are visible with a lens. A pair a narrow wings run down from the base of each petiole to the next leaf. Stipules linear or subulate, about 1-1.5 mm long. Seed germination time 37 days.

Distribution and Ecology

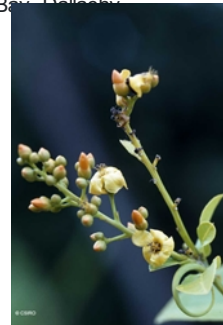
Occurs in CYP and NEQ. Altitudinal range from near sea level to 450 m. Grows in gallery forest, lowland and upland rain forest. Also occurs in Malesia.

Synonyms

Durandea jenkinsii (F.Muell.) Stapf, *Hooker's Icones Plantarum ser. 4*, 94: t2822(1906).

RFK Code

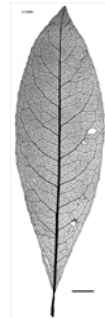
2093



Flowers and buds. ©



Fruit © CSIRO



Scale bar 10mm. © CSIRO



10th leaf stage. © CSIRO



Cotyledon stage, epigeal germination. © CSIRO



Vine stem bark and vine stem transverse section. © CSIRO



Web edition hosted at <https://apps.lucidcentral.org/rainforest>