

Callitriche muelleri Sond.

Family:

Plantaginaceae

Sonder, O.W. (1856) *Linnaea* 28(2): 229. Type: Lectotype: Victoria. Latrobe River, April or May 1853, [F. Mueller ssp. (leafy branch chosen)]; MEL 2289178, ex herb. Sonder; isolecto: K 000348666, MEL 2289180 & 2289179A).

Stem

Mat-forming herb.

Leaves

Leaves orbicular to rhomboidal. Leaf blade 1.4-2.9 x 1.4-3.3 mm; petiole 1-3.1 mm long, as long or slightly shorter than the leaf blade.

Flowers

Flowers sessile, about 0.3 mm diameter. One staminate and one pistillate flower in the same leaf axil. Female flower with 2 carpels. Filaments 0.1-0.2 mm long, anthers yellow. Styles 0.1-0.2 mm long, persistent.

Fruit

Fruit breaking up into 4 one seeded mericarps. Wing of mericarp transparent. Nutlet about 0.5 mm diameter excluding the narrow wing. Wetted seeds sticky.

Distribution and Ecology

Occurs in the Atherton Tablelands region of NEQ, and in near coastal areas of southern Queensland and southwards to NSW and VIC, and in New Zealand. Altitudinal range in NEQ from 900m to 1150m. Grows in moist places and in creeks, in rainforest and sclerophyll forest.

Natural History & Notes

Diagnostic features are the large wing of the fruit, and the bright green, orbicular leaves. Bean (2007).

Synonyms

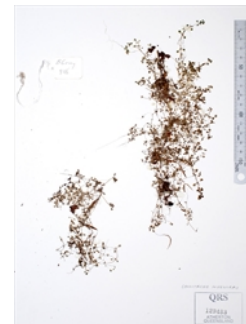
Callitriche macropteryx Hegelm., *Monographie der Gattung Callitriche* : 59(1864), Type: Wohnort Neuholland (Hawkesbury River, Ferd. Bauer; Herb. Vindob.).

RFK Code

4179



Leaves and fruit seen in axils of leaves at centre of photograph. © Australian Plant Image Index (APII). Photographer: M. Fagg.



Herbarium specimen. © CSIRO

Copyright © CSIRO 2020, all rights reserved.



Web edition hosted at <https://apps.lucidcentral.org/rainforest>