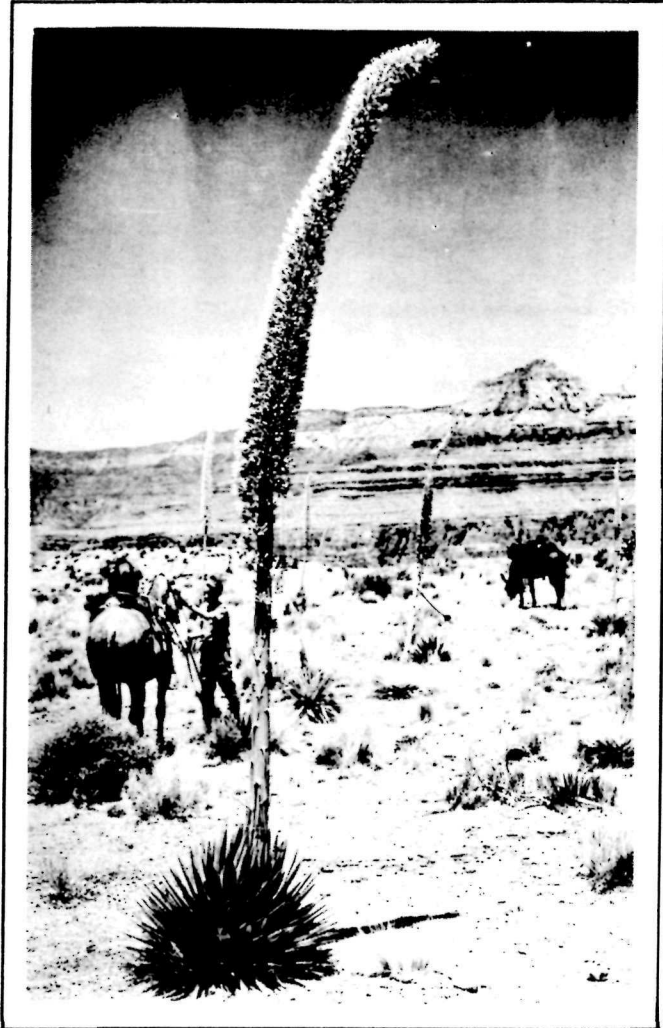


CHECK-LIST OF PLANTS OF GRAND CANYON NATIONAL PARK



Natural History Bulletin No. 6
Grand Canyon Natural History Association
June, 1936

NATURAL HISTORY BULLETIN

NO. 6

June, 1936

National Park Service,
Grand Canyon National Park

Grand Canyon Natural
History Association

This bulletin is published by the Grand Canyon Natural History Association as a project in keeping with its policy to stimulate interest and to encourage scientific research and investigation in the fields of geology, botany, zoology, ethnology, archeology and related subjects in the Grand Canyon region. This number is one of a series issued at irregular intervals throughout the year.

Notification of the publication of bulletins by the Association will be given, upon date of release, to such persons or institutions as submit their names to the Executive Secretary for this purpose. The following bulletins are available at present:

- No. 1 - Mammals of the Grand Canyon Region.....25¢
No. 2 - History and Exploration of the Grand
Canyon Region.....15¢
No. 3 - Trees of Grand Canyon National Park.....50¢
No. 4 - Contributions to Grand Canyon Bird Study..15¢
No. 5 - Contributions to Grand Canyon Geology.....15¢
No. 6 - Check-list of Plants of Grand Canyon
National Park.....50¢
-

M. R. Tillotson,
Superintendent.

Edwin D. McKee
Exec. Sec'y. and Editor

CHECK-LIST OF PLANTS OF GRAND CANYON NATIONAL PARK

INTRODUCTION TO PRELIMINARY CHECK-LIST

THE purpose of this check-list is to make available for interested persons a convenient means of ascertaining what plants occur in the Grand Canyon, to serve as a reference in general and local distribution of individual plants, and to establish a standard of authentic plant names in this region for use in educational and research work in the National Park.

The plants named in this list have been identified by the United States National Herbarium with a few exceptions. The lichens were done by Mr. Charles C. Plitt. All other exceptions have been designated by placing the authority for the identification in the text. The reference used for phylogenetic order, describer and general range of trees was "Check-list of the Forest Trees of the United States, Their Names and Ranges" by George Sudworth, and his nomenclature was followed for the trees. For other seed plants and for ferns, reference was made to "Flora of New Mexico" by E. O. Wootton and Paul C. Standley, and "Flora of the Rocky Mountains and Adjacent Plains" by P. A. Rydberg. Several plants occur in the check-list that were not found in manuals. In each of these cases a question mark was put down for the describer and general distribution.

"H.N." following the plant name in the text refers to the herbarium number of the specimen in the Grand Canyon Herbarium. In those cases in which a number does not follow "H.N.", there is no specimen of that plant in the Grand Canyon herbarium. A star following "H.N." indicates that the specimen may be found in the Forest Service herbarium in Kanab, Utah.

The work contributing to the compilation of this check-list has been carried on at the Grand Canyon for the past five years. It includes plant collections made by Glen E. Sturde-

vant, Edwin D. McKee, Vernon Bailey, Pauline Mead and Clyde Searl. A list of plants of the Kaibab Plateau in the United States Forest Service Herbarium at Kanab, Utah, was contributed by Walter G. Mann and is included here. These plants were also identified by the National Herbarium.

The preliminary status of this paper should be emphasized. The list is far from complete and there is much more information to be obtained before the entire local distribution of each plant is known. Collecting and identifying plants and building up the herbarium is being continued so that a more complete check list of Grand Canyon plants will be available in the near future.

Edwin D. McKee, who has overseen and participated in much of this work for the past three years and assisted in editing the text, is responsible to a large extent for the publication of the check-list. His advice and criticism is greatly appreciated by the writer.

Pauline Mead Patraw.

February, 1932.

INTRODUCTION TO REVISED EDITION

THIS revision is made necessary by the collection and identification of many new species. No change has been made in the style, except to substitute an indexing system for the herbarium number.

The collections of A. E. Borell, H. W. Marion, and Albert C. Hawbecker were identified by the University of California Herbarium, while all the others were identified by the National Herbarium at Washington, D. C. The same authorities were used in the revision as were used in the preliminary work.

The above mentioned indexing system is taken from Tidestrom's "Flora of Utah and Nevada", and enables one to use the check-list as an index to the herbarium.

Since the first edition, in February, 1932, collections have been made by Edwin D. McKee, A. E. Borell, Clyde Searl, Pauline Mead Patraw, D. E. McHenry, H. W. Marion, and Albert C. Hawbecker. Out of over five hundred plants some two hundred were new species which can be added to the list.

Edwin D. McKee assisted greatly in matters of policy, and also is responsible for editing the text. T. B. Plair, Forest Inspector, made the work possible by allowing time to be used in botanical research. Too much credit can not be given to Pauline Mead Patraw for paving the way with the first edition.

The check-list, as it now stands is still very incomplete. In many out-of-the-way places the writer saw new species that it was impossible to bring out, and there are other places that have not been touched that may yield new species. It is urged that others collect that the check-list and the herbarium be more complete.

Albert C. Hawbecker,
Junior Forester.

March, 1936.



C O N T E N T S

PLANT FAMILIES BY COMMON NAMES

	Herbarium Number*	Page		Herbarium Number	Page
Algae		1	Goosefoot	36	21
Amaranth	37	22	Grape	78	43
Amaryllis	22	15	Grass	16	8
Apple	59	35	Green Algae		1
Aster	128	64	Heath	96	50
Barberry	46	27	Honeysuckle	121	63
Beech	28	17	Horsetail	5	4
Bellflower	126	64	Hydrangea	56	31
Birch	27	17	Indian pipe	95	50
Bittersweet	75	42	Joint fir	8	7
Borage	110	55	Lichens		1
Broomrape	117	62	Lily	21	14
Buckthorn	77	42	Loasa	86	45
Buckwheat	35	19	Lobelia	127	64
Bur-reed	10	7	Madder	120	62
Buttercup	45	24	Mallow	79	43
Cactus	87	45	Maple	76	42
Capper	50	30	Milkweed	105	53
Carrot	92	49	Mimosa	61	35
Dogbane	104	52	Mint	113	58
Dogwood	93	50	Mistletoe	33	18
Elm	29	18	Mosses		2
Evening Primrose	90	47	Mormon tea	8	7
Fern	2	3	Mulberry	31	18
Figwort	114	59	Mustard	49	27
Flax	66	40	Nettle	32	18
Four o'clock	38	22	Oleaster	88	47
Fumitory	48	27	Olive	100	51
Gentian	102	52	Orchid	24	16
Geranium	65	39	Pea	64	36
Gooseberry	57	31	Phlox	108	53

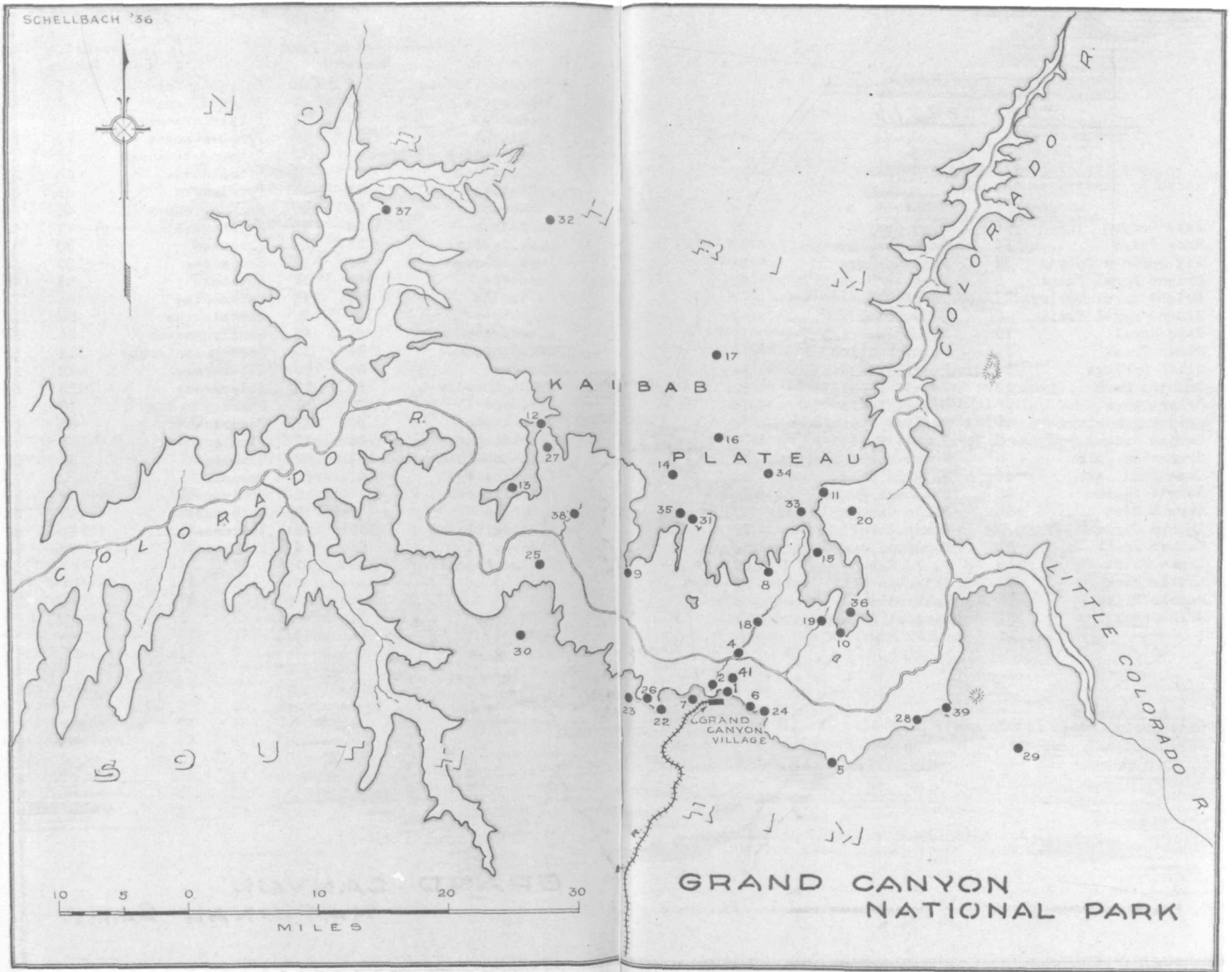
*The figures are the numbers of the family and indicate the number of the folder in which the specimen may be found in the Grand Canyon National Park Herbarium.

	Herbarium Number	Page		Herbarium Number	Page
Pine	7	5	Sedge	17	13
Pink	42	23	Senna	62	36
Plantain	119	62	Shinleaf	94	50
Plum	60	35	Spurge	71	40
Pondweed	11	7	St. John's-wort	80	44
Poppy	47	27	Stonecrop	53	30
Potato	112	57	Sumac	74	41
Primrose	98	51	Tamarix	83	44
Purslane	40	23	Verbena	111	56
Rose	58	32	Violet	85	45
Rue	68	40	Waterleaf	109	54
Rush	20	14	Water scum		1
Sandalwood	34	18	Water starwort	72	41
Saxifrage	54	30	Willow	26	16

PLANT FAMILIES BY SCIENTIFIC NAMES

	Herbarium Number	Page		Herbarium Number	Page
Acarosporaceae		1	Celastraceae	75	42
Aceraceae	76	42	Chenopodiaceae	36	21
Algae		1	Chlorophyceae		1
Amaranthaceae	37	22	Cladoniaceae		1
Amaryllidaceae	22	15	Cornaceae	93	50
Anacardiaceae	74	41	Crassulaceae	53	30
Apiaceae	92	49	Cyperaceae	17	13
Apocynaceae	104	52	Dicranaceae		2
Asclepiadaceae	105	53	Eleagnaceae	88	47
Asteraceae	128	64	Equisetaceae	5	4
Berberidaceae	46	27	Ericaceae	96	50
Betulaceae	27	17	Euphorbiaceae	71	40
Boraginaceae	110	55	Fabaceae	64	36
Brachytheciaceae		3	Fagaceae	28	17
Brassicaceae	49	27	Fumariaceae	48	27
Cactaceae	87	45	Gentianaceae	102	52
Caesalpinaceae	62	36	Geraniaceae	65	39
Callitrichaceae	72	41	Gnetaceae	8	7
Caloplacaceae		2	Grimmiaceae		2
Campanulaceae	126	64	Grossulariaceae	57	31
Capparidaceae	50	30	Gyrophoraceae		1
Caprifoliaceae	121	63	Hydrangeaceae	56	31

	Herbarium Number	Page		Herbarium Number	Page
Hydrophyllaceae	109	54	Polygonaceae	35	19
Hyperaceae	80	44	Polypodiaceae	2	3
Hypnaceae		3	Polytrichaceae		3
Juncaceae	20	14	Portulacaceae	40	23
Lecanoraceae		1	Potamogetonaceae	11	7
Lecideaceae		1	Primulaceae	98	51
Liliaceae	21	14	Pyrolaceae	94	50
Linaceae	66	40	Ranunculaceae	45	24
Loasaceae	86	45	Rhamnaceae	77	42
Lobeliaceae	127	64	Rosaceae	58	32
Loranthaceae	33	18	Rubiaceae	120	62
Malaceae	59	35	Rutaceae	68	40
Malvaceae	79	43	Salicaceae	26	16
Menthaceae	113	58	Santalaceae	34	18
Mimosaceae	61	35	Saxifragaceae	54	30
Monotropaceae	95	50	Scrophulariaceae	114	59
Moraceae	31	18	Silenaceae	42	23
Nyctaginaceae	38	22	Solenaceae	112	57
Oleaceae	100	51	Sparaganaccae	10	7
Onagraceae	90	47	Tamaricaceae	83	44
Orchidaceae	24	16	Timmiaceae		2
Orobanchaceae	117	62	Ulmaceae	29	18
Papaveraceae	47	27	Uneacae		2
Parmeliaceae		1	Urticaceae	32	18
Pinaceae	7	5	Verbenaceae	111	56
Plantaginaceae	119	62	Violaceae	85	45
Poaceae	16	8	Vitaceae	78	43
Polemoniaceae	108	53			



MAP LEGEND

Location of place names mentioned in check-list
shown by numbers on the map:

Bass Canyon	25	Muav Canyon	27
Bass Point	25	Nankoweap Basin	20
Big Springs Canyon	32	Neal Springs	33
Bright Angel Point	8	Pasture Wash	30
Bright Angel Springs	35	Phantom Ranch	4
Bright Angel Trail	2	Pipe Creek	1
Cape Royal	10	Point Imperial	11
Clear Creek	19	Point Sublime	9
Cliff Springs	36	Powell Plateau	13
DeMotte Park	17	Powell Saddle	12
Desert View	39	Ribbon Falls	18
Dripping Springs	23	Roaring Springs	18
Garden Creek	2	Rowe's Well	7
Grandview Point	5	Santa Maria Springs	26
Greenland Lake	15	Shinumo Creek	38
Hermit Basin	26	Shoshone Point	24
Hermit Rest	22	Slide Canyon	37
Indian Gardens	2	Swamp Point	12
Kaibab Trail	21	Thompson Canyon	34
Lipan Point	28	V. T. Ranch	17
Little Park	16	Waterloo Hill	29
Marble Flats	14	Yaki Point	6
Milk Creek	31	Yavapai Point	1

ALGAE "WATER SCUM, SEA WEEDS"

Chlorophyceae "Green Algae"

Chara "Stonewort"

Chara vulgaris

Found in pools and quiet water along Bright Angel Creek.

LICHENES "LICHENS"

Lecideaceae

Lecidea

Lecidea crenata

Kaibab Trail, south of the River.

Cladoniaceae

Cladonia

Cladonia pyxidata chlorophaea

Cups always present, ashy sea-green. Northern Minnesota, Massachusetts, Pennsylvania, Ohio, north to Great Bear Lake. On earth or rotten wood. Found in the Kaibab Forest, north rim of Grand Canyon.

Gyrophoraceae

Gyrophora

Gyrophora hirsuta

South rim of Grand Canyon, Hermit Trail, base of Kaibab Limestone.

Acarosporaceae

Acarospora

Acarospora sp.

South rim of Grand Canyon. Cocopa Point.

Lecanoraceae

Lecanora

Lecanora rubina

Subfoliose, yellowish green above, black below. South rim of Canyon. Summit of Lassen Pk. San Francisco Mts.

Parmeliaceae

Parmelia

Parmelia conspersa stenophylla

Yellow green above, brown black below. South rim.

Common throughout northern United States, Alaska and British Columbia. South in mountains. On igneous or metamorphic rocks, rarely in wood.

Parmelia molluenseula

Cocopa Point, south rim. Near De Motte Park, Kaibab Forest.

Usneaceae

Usnea

Usnea florida

South rim of Grand Canyon on trees. Near Yavapai Point.

Usnea hirta

North rim, on trees.

Ramalina

Ramalina calicares subampliata

Kaibab Forest. North rim of Grand Canyon.

Caloplacaceae

Caloplaca

Caloplaca elegans

South rim of Grand Canyon. Summit of Lassen Peak, San Francisco Mountains.

MUSCI "MOSSES"

Dicranaceae

Ceratodon

Ceratodon purpurens xanthopus

In Kaibab Forest.

Ceratodon pulvinata Smith

Ceratodon apocarpa Hedw.

Grimmiaceae

Grimmia

Grimmia montana

North rim of Grand Canyon.

Timmiaceae

Timmia

Timmia bavarica

North rim of Grand Canyon.
Timmia piliferum Schreb.

Polytrichaceae

Polytrichum

Polytrichum juniperum
 Kaibab Forest.

Hypnaceae

Amblystegium

Amblystegium juratzkanum
 Kaibab Forest

Hypnum

Hypnum reptile
 Kaibab Forest.

Brachytheciaceae

Brachythecium

Brachythecium collinum
 Kaibab Forest.

Polypodiaceae "Fern family"

Woodsia R. Br.

Woodsia oregona D. C. Eaton 2.1-2
 Crevices of dryish cliffs and rock slopes; chiefly in the yellow pine belt. British Columbia to South Dakota, Nebraska, New Mexico and Arizona and in the Sierras to southern California. Occurs at V.T. Park on the Kaibab Plateau.

Cystopteris or Filix Adans.

Cystopteris fragilis Bernh., or Filix fragilis L. 2.2-2
 "Bladder fern"
 Alaska to Labrador and Newfoundland, southward nearly throughout the United States. Also in Eurasia and tropical America. Rocky woods and moist situations of Canadian and Alpine Zones. Found in the Kaibab Forest growing in the protection of rocks.

Pteridium Scop "Bracken Fern"

Pteridium aquilinum pubescens Underw. 2.11-1
 Found from Alaska to Montana, southward to the Mexican border on open slopes, in thickets and moist woods. It

is quite abundant in the Kaibab Forest, especially on the south facing slopes of canyons and in aspen groves.

Adiantum L. "Maidenhair fern"

Adiantum capillus-veneris L.

Ranges from Virginia to Florida, west to Mississippi, Utah, Southern California and the Mexican border region. Warm temperate regions of both hemispheres. Found on shaded banks and in rocky ravines in Lower and Upper Sonoran Zones. At Grand Canyon it grows along Bright Angel Creek and on the north rim.

Cheilanthes Swartz. "Lipfern"

Cheilanthes foei Moore

2.13-2

Ledges and rock crevices, Illinois and southern Minnesota to British Columbia, Washington, Southern California (Providence Mountains), and the Mexican border region from central Texas westward. Collected northeast of Grand View Point at Grand Canyon.

Pellaea Link. "Cliffbrake"

Pellaea longimucronata Hook.

2.14-3

Cliffs and dry rocky slopes. Southwestern New Mexico to southern Utah, southern Nevada and western Arizona. Also in south-central Colorado. At the Grand Canyon it was collected near Bright Angel Trail.

Notholaena R. Br. "Cloak fern"

Notholaena parryi D. C. Eaton

2.15-1

Found in the desert region of Southern California to southcentral Arizona and southwestern Utah. In crevices of rocks. Found north of the River in Grand Canyon.

Notholaena sinuata integerrima Hook.

2.15

Dry hills of the Upper and Lower Sonoran Zones. Found in a rock cleft along the Kaibab Trail at Grand Canyon.

Notholaena limitanea Maxon

2.15-4

Clefts of dry limestone rocks of the artemisia belt. New Mexico, Arizona and Utah. Found on the south rim in clefts of rocks.

Equisetaceae "Horse-tail Family"

Equisetum L. "Scouring rush"

Equisetum kansanum (?) Schaffn.

5.1-2

British Columbia to Ontario, south to Southern Cali-

ornia, Arizona, New Mexico, Missouri and Ohio. River banks and moist slopes. Found near springs on the Kaibab Plateau.

- Equisetum laevigatum R. Br. 5.1-3
Found from British Columbia to Southern California, east to New York, Illinois, Missouri, and Texas. In deep alluvial thickets and on sandy banks. At the Grand Canyon it is found along Bright Angel Creek in the Canyon and at Greenland Spring on the north rim.

Pinaceae "Pine family"

Pinus L. "Pine"

Pinus monophylla Torr. and Frem. "Single-leaf Pine" 7.1-1
Forming a characteristic belt at an elevation of 3600 feet and upward to 7200 feet or more. Western Utah to California. In Grand Canyon found around the Utah Parks powerhouse and in Nankowap Basin. Characterized by the single needle to the bundle.

Pinus edulis Engelm. "Pinyon" 7.1-2
From Colorado and Utah southward to Texas and Northern Mexico. Characteristic tree of Upper Sonoran Zone. It is the dominant tree on the south rim of the Grand Canyon and occurs in abundance on the north rim also. The nut is large and edible.

Pinus ponderosa Lawson "Western Yellow Pine" 7.1-4
From British Columbia and Dakota southward in the Pacific and Rocky Mountain region to Western Texas, southwestern Nebraska, and Mexico. It is the characteristic tree of the Transition Zone, growing in large pure stands. In the Grand Canyon region it extends over the Kaibab and Coconino National Forests in one of its biggest stands.

Picea Link. "Spruce"

Picea pungens Engelm. "Blue spruce" 7.2-1
Extends from Wyoming to New Mexico and Arizona, in the Transition and Canadian Zones. It is the dominant tree on the Kaibab Plateau at the higher elevations, conspicuous along the edges of the parks. It is a very hardy tree with a beautiful symmetrical shape and the needles are silvery green.

Picea engelmannii Engelm. "Engelmann spruce" 7.2-2
From southeastern and northern Arizona and southern New Mexico northward through the Rocky Mountain region to

British Columbia, and westward to the eastern slopes of the Cascade Mountains in Oregon and Washington; occurs also in a small patch in the northeast corner of Shasta County, California. It occurs in the Kaibab Forest at the Grand Canyon. With Alpine fir in dense stands on west facing slopes.

Pseudotsuga Carriere

Pseudotsuga taxifolia (LaMark) Britton. "Douglas fir"

7.4-1

Ranges from Alaska to western Texas, California and northern Mexico. It occurs in the Transition Zone between the Transition and Canadian Zones. On the Kaibab plateau it grows on the higher, drier hill slopes of the Canadian Zone and in the upper limits of the Transition Zone. On the south side of the Grand Canyon it grows just below the rim in protected places.

Abies Miller "Fir"

Abies concolor Lindley & Gordon "White fir" 7.5-1

Colorado and New Mexico to Oregon and California.

Occurs in the upper limits of the Transition Zone. It is abundant on the Kaibab, forming pure stands on many of the hill tops in the Canadian Zone, and grows also with the Yellow pine in the upper limits of the Transition Zone. On the south rim of the Grand Canyon it grows just below the rim in protected places.

Abies lasiocarpa (Hooker) Nuttall "Alpine fir" 7.5-2

From Alaska to New Mexico and Arizona in the Canadian Zone. It occurs on the Kaibab Plateau with Engelmann Spruce on West and North facing slopes.

Juniperus L. "Juniper"

Juniperus siberica Burgsd.

7.7-1

Juniperus communis L. "Dwarf juniper"

Alaska to Greenland, southward in the Rocky Mountains to New Mexico, in the Sierra Nevadas to Mono Pass, east to North Carolina and northern Nebraska. Also in the Old World. A low shrub growing usually at the bases of aspens and evergreens, in the Canadian Zone, on the Kaibab Plateau.

Juniperus scopulorum Sargent "Rocky Mountain red cedar"

7.7-2

Alberta to British Columbia, southward to New Mexico, Arizona, and Nevada. Upper Sonoran and Lower Transition Zones. Grows on north rim of Grand Canyon.

Juniperus utahensis (Engelmann) Lemmon "Utah juniper"

7.7-4

Ranges from southwestern Wyoming to Nevada, southward to New Mexico and southwestern California. Characteristic tree of the Upper Sonoran Zone, found in pure stands in Nankoweap Basin and on the Great Thumb. Found on both rims of the Grand Canyon.

Gnetaceae "Jointfir family"

Ephedra L. "Jointfir"Ephedra viridis Coville "Brigham tea" 8.1-1

Ranges from Utah to southwestern California and New Mexico in Upper Sonoran and Transition Zones. It is the common form which occurs on both rims of the Grand Canyon.

Ephedra torreyana S. Wats. 8.1-2

Southern Colorado (?) to Southern California and southward to Mexico. Grows in canyons and on hillsides of Lower and Upper Sonoran Zones. Occurs in the Grand Canyon, collected north of the river.

Ephedra nevadensis S. Wats. 8.1-3

Utah to California and Northern Mexico. In Upper Sonoran Zone. Rare in Lower Sonoran Zone. Grows in the inner gorge of Grand Canyon.

1. MONOCOTYLEDONES

Sparganiaceae "Bur-reed family"

Sparganium L. "Bur-reed"Sparganium angustifolium Michx. 10.1-3

Newfoundland to British Columbia, California, and Pennsylvania. In streams and lakes upward to the Alpine Zone. In the Kaibab Forest it occurs in abundance in the older ponds.

Potamogetonaceae "Pondweed family"

Potamogeton L. "Pondweed"Potamogeton americanus Schecht. & Cham. 11.1-2

North America except in the extreme north. In ponds and streams of Upper Sonoran upward to Canadian Zone, Kaibab Forest.

Poaceae "Grass family"

Andropogon L. "Beardgrass"

Andropogon virgineus ditior Hack. 16.2
 General range (?). Phantom Ranch, in Grand Canyon.

Heteropogon Pers. "Tanglehead"

Heteropogon contortus (L.) Beauv 16.2a
 Rocky hills and canyons, Texas to Arizona; tropical and warmer regions of both hemispheres. Found along the Clear Creek Trail in the Grand Canyon.

Hilaria H.B.K. "Black bunch grass"

Hilaria jamesii (Torr.) "Galleta grass" 16.4-2
 Desert areas, hillsides and lower canyons, North rim.

Aristida L. "Three-awn"

Aristida glauca (Nees) Walp. "Reverchon Three-Awn" 16.14-3
 Dry or rocky hills and plains, Texas to Utah, Nevada, and southern California, south to Puebla, Mexico. Found on the South Rim, and in the Canyon near Huxley Terrace at Grand Canyon.

Aristida longiseta Steud. "Red Three-Awn" 16.14-4
 Plains and foothills, North Dakota to Montana, south to Texas, Arizona, and northern Mexico. Found on the South Rim at Grand Canyon.

Aristida fendleriana Steud. 16.14-5
 Lower and Upper Sonoran Zones. North Rim.

Stipa L. "Needle grass"

Stipa neomexicana (Thurb.) Scribn. 16.15-1
 "New Mexican Feather-Grass".

Mesas, canyons, and rocky slopes, western Texas and Colorado to Utah and Arizona. Found on the Tonto and on the South Rim of the Grand Canyon.

Stipa arida Jones 16.15-8
 Rocky slopes, rare, southwestern Colorado, Utah and Arizona. Found along streams on the Tonto and along Bright Angel Trail in Grand Canyon.

Stipa comata intermedia Scribn. 16.15-8a
 "Needle and thread"

Saskatchewan to New Mexico and California. Upper Sonoran to Alpine Zones. Kaibab Forest.

Stipa columbiana Macoun. "Porcupine grass" 16.15-
 British Columbia, Wyoming, Transition and Canadian Zones. Kaibab Forest.

Oryzopsis Michx.

Oryzopsis hymenoides Roem. & Schult. "Rice grass" 16.16-1
Manitoba to Texas, west to California and Mexico.

Lower and Upper Sonoran Zones. Found on both Rims of Grand Canyon.

Oryzopsis bloomeri (Boland) Ricker 16.16-3

Dry ground, medium altitudes, Montana to eastern Washington, south to New Mexico and California. Found on the South Rim, and in the Canyon at Grand Canyon.

Muhlenbergia Schreb.

Muhlenbergia wrightii Vasey "Spike Muhly" 16.17-9

Plains and open slopes at medium altitudes, Colorado, Utah, New Mexico, Arizona, and northern Mexico. Found at Milk Creek, and in South Big Spring Canyon on the North Rim of the Grand Canyon.

Muhlenbergia montana (Nutt.) Hitchc. 16.17-10

Muhlenbergia trifida Hack.

Western Texas to Utah and California and Mexico. Upper Sonoran Zone. Kaibab Forest.

Phleum L. "Timothy"

Phleum pratense L. "Timothy" 16.18-1

An escape common all over the United States in waste places and along roadsides. At Grand Canyon found around tanks on the South Rim.

Phleum alpinum L. "Mountain timothy" 16.18-2

Canada to New Hampshire, New Mexico, California and Alaska. Europe and Asia. Mountain meadows and slopes of Canadian Zone, Kaibab Forest.

Alopecurus L.

Alopecurus aequalis Sobol. 16.19-1

Valleys and canyons along water courses. Upper Sonoran up to Canadian Zone. Maine to Pennsylvania, California and Alaska. North Rim, Grand Canyon.

Sporobolus R. Br. "Dropseed"

Sporobolus contractus Hitchc. 16.20-6

Texas to Colorado, Nevada, California and southward. Lower and Upper Sonoran Zones. North Rim.

Blepharoneuron Nash.

Blepharoneuron tricholepis (Torr.) Nash. 16.21-1

Transition and Canadian Zones. North Rim.

Polygon Desf.

Polygon monspeliensis (L.O) Desf. "Rabbitfoot Grass" 16.23-1

Meadows and along ditches about settlements. New Hampshire to British Columbia, southward to Mexico. Introduced from Europe. In Grand Canyon found only at Powell Saddle Spring. Probably introduced years ago by prospectors along with animal feed.

Agrostis L. "Bentgrass"

Agrostis verticillata Vill. 16.25-3

Moist ground, along irrigation ditches, and in canyons, at 3600 feet upwards to 5400 feet; introduced from Europe. California to Utah, Texas, and Mexico. In Grand Canyon found near Roaring Springs and around springs near routes of travel. Probably introduced through horse feed.

Agrostis rossae Vasey "Ross Red-top" 16.25-5

Rocky creeks and mountain slopes at high altitudes, Colorado and Utah to Alberta, Washington, and California. Found along creeks on the Tonto in Grand Canyon.

Agrostis hiemalis Walt. "Rough hair grass" 16.25-6

Canadian Zone. North Rim.

Agrostis alba L. "Redtop" 16.25-

Common redtop of lawns, meadows, and pastures. Found in all the cooler parts of U. S. and Eurasia. In Grand Canyon found along routes of travel, especially in meadows, and around springs.

Aira L. "Hairgrass"

Aira caespitosa L. 16.28-3

Wet places in Transition and Canadian Zones. Newfoundland to Alaska, southward to New Jersey and California. North Rim, Grand Canyon.

Koeleria Pers. "Mountain Junegrass"

Koeleria cristata (L.) Pers. 16.31-1

Illinois to Texas, British Columbia and California. Up to Alpine Zone. Kaibab Forest.

Avena L. "Oats"

Avena fatua L. "Wild Oats" 16.32-1

In fields and along roads throughout the U.S. Introduced from the Old World. In Grand Canyon found along B.A. Trail where probably dropped from packs of horse feed.

- Bouteloua Lag. "Grama grass"
- Bouteloua barbata Lag. "Six-weeks Grama" 16.37-2
Open ground, mesas, and rocky hills, Texas, New Mexico, Southern Utah, Arizona, southeastern California, and Mexico. Found on the Clear Creek Trail in Grand Canyon.
- Bouteloua gracilis (H.B.K.) "Blue grama" 16.37-4
Plains, canyons and foothills to 7500 feet. North Rim and South Rim in large flats.
- Bouteloua eriopoda Torr. "Black grama" 16.37-6
From 3600 feet to 4500 feet. North Rim.
- Munroa Torr.
- Munroa squarrosa (Nutt.) Torr. 16.40-1
Saskatchewan and Alberta, Texas and Arizona. Lower and Upper Sonoran Zones. Kaibab Forest.
- Phragmites Trin. "Reed"
- Phragmites communis Trin. 16.41-1
Swamps, edges of rivers and lakes. Temperate regions of the world. Phantom Ranch in Grand Canyon.
- Triodia R. Br.
- Triodia mutica (Torr.) Scribn. "Slim Triodia" 16.42-1
Plains and hillsides of the Covillea belt; St. George, Utah; St. Thomas, Nevada. California to Colorado and Texas. Found in Grand Canyon along trails and in meadows of the North Rim.
- Triodia pilosa (Buckl.) Merr. "Hairy Triodia" 16.42-3
Plains and rocky hills, western Kansas to Nevada, south to Texas, Arizona and central Mexico. Found along streams on the Tonto in Grand Canyon.
- Scleropogon (Describer ?)
- Scleropogon brevifolius (Describer ?) 16.46
Kaibab Forest.
- Dactylis L.
- Dactylis glomerata L. "Orchard Grass" 16.47-1
Fields, canyons and mountain sides, upward to 9000 feet, introduced. North America and Europe. Quite common in meadows and along trails of the Grand Canyon, North Rim.
- Poa L. "Blue grass"
- Poa pratensis L. "Kentucky blue grass" 16.48-5
North America, Europe and Asia. Canadian Zone. Kaibab Forest.

- Poa longiligula Scribn. & Williams. 16.48-13
Oregon and California to South Dakota and New Mexico.
Foothills, canyons and mountain sides up to Canadian
Zone. North Rim of the Grand Canyon.
- Poa fendleriana (Steud.) "Fendler's blue grass" 16.48-14
Washington to Wyoming and New Mexico and Lower Califor-
nia. Upper Sonoran to Alpine Zones. Kaibab Forest.
- Poa arida Vasey "Plains Bluegrass" 16.48-24
Prairies, plains, and alkali meadows, up to 9000 feet.
Manitoba to Alberta, south to western Iowa, Texas, and
northern Arizona. Found along Clear Creek Trail in
Grand Canyon.
- Festuca* L. "Fescue"
- Festuca octoflora Walt. "Slender fescue grass" 16.51-1
Lower Sonoran to Canadian Zone. North Rim.
- Festuca ovina L. "Sheep's fescue grass" 16.51-16a
North rim. Little Park.
- Bromus* L. "Brome grass"
- Bromus rubens L. "Fox-tail Chess" 16.52-3
Dry hills and in waste or cultivated ground, Washington
to southern California, and east to Utah and Arizona;
Massachusetts. Found along roadsides in the Grand
Canyon region.
- Bromus richardsoni Link, Hart. 16.52-13
Transition and Canadian Zones. North rim of Grand
Canyon.
- Bromus porteri Coulter 16.52-14
Transition and Canadian Zones. North Rim.
- Bromus frondosus (Shear) Woot. & Standl. 16.52
North Rim of Grand Canyon.
- Bromus purgans L. "Canada Brome" 16.52
Moist woods and rocky slopes, Massachusetts to Alberta,
south to northern Florida and Arizona. In Grand Canyon
found on stream sides down on the Tonto and along
Bright Angel Trail.
- Bromus ciliatus L. "Fringed Brome" 16.52
Moist woods and rocky slopes, Newfoundland to Washington
south to New Jersey, Tennessee, Iowa, western Texas,
and Southern California. Found freely in the Rocky
Mountains. Quite common through the Kaibab Plateau.
- Agropyron* Beauv. "Wheat grass"
- Agropyron dasystachyum (Hook) "Northern wheat grass"
16.54-1

Valleys, canyons and mountain meadows up to 9000 feet.
North Rim of Grand Canyon.

Agropyron riparium Scribn. and Smith 16.54-2
Gravelly banks, dry hill sides and sage plains. North
Rim of Grand Canyon.

Agropyron smithii Rydb. "Bluestem" 16.54-3
Upper Sonoran Zone. Alkaline plains up to 8100 feet.
North Rim of Grand Canyon.

Agropyron tenerum Vasey "Slender Wheatgrass" 16.54-7
Foothills, canyons and mountain sides upward to
9000 feet. North Rim of Grand Canyon.

Hordeum L.

Hordeum murinum L. "Mouse Barley" 16.55-2
Fields, waste places, and open ground, introduced from
Europe; here and there in the Eastern States from Maine
to Alabama; common on the Pacific Coast, Idaho and Brit-
ish Columbia, south to Utah, New Mexico, and California.
In Grand Canyon found around dwellings and along trails
and roads.

Hordeum jubatum L. "Foxtail Barley" 16.55-6
Open ground, meadows and waste places, Newfoundland and
Labrador to Alaska, south to Maryland, Illinois, Mis-
souri, Texas, California, and Mexico; introduced into
Eastern States. Found in Grand Canyon around head of
Kaibab Trail, and along roads of both Rims.

Elymus L.

Elymus triticoides Buckl. "Beardless Wild-rye" 16.56-1
Moist or alkaline soil, at low and medium elevations,
Montana to Washington, south to western Texas and Baja
California. Found in Grand Canyon near Santa Maria
Spring.

Sitanion

Sitanion hystrix (Nutt.) J.G.Smith 16.57-2
New Brunswick to Georgia, Texas and California. Up
to Transition Zone. Kaibab Forest.

Cyperaceae "Sedge family"

Carex L. "Sedge"

Carex rostrata Stokes "Sedge" 17.11-67
Plains upward to the spruce belt. Labrador to Alaska,
southward to Delaware, New Mexico and California. In
Grand Canyon occurs in damp meadows of the North Rim.

Juncaceae "Rush Family"

Juncus L. "Rush"

- Juncus saximontanus Nels. "Rush" 20.1-31
Wet places in Aspen and spruce belts. Alberta and
British Columbia southward to New Mexico and California.
In Grand Canyon occurs in damp meadows and around
springs on the North Rim.

Liliaceae "Lily family"

Zygadenus Michx. "Death camas"

- Zygadenus elegans Pursh "Mountain death camas" 21.3-3
Ranges from Saskatchewan to New Mexico, Nevada and
Alaska in Transition and Canadian Zones. It was
collected in a damp canyon on the Kaibab Plateau.

Allium L. "Onion".

- Allium bisceptrum Wats. 21.8-
Plains and hillsides of Covillea, artemisia, and pinyon
belts. Utah to New Mexico, westward to California.
Found at Pasture Wash on south rim of Grand Canyon.
Allium acuminatum Hook. 21.8-19
Plains and mountain sides of Upper Sonoran and Transi-
tion Zones. British Columbia to California, Arizona
and Colorado. North Rim of Grand Canyon.

Hookera Salisb.

- Hookera capitata (Benth) Kuntze
Brodiaea capitata Benth. (Blue Dicks" 21.10-1
Found throughout California at moderate elevations.
Found in Grand Canyon National Monument.
Hookera pauciflora (Torr.) Tidestrom "Clusterlily"
Brodiaea capitata pauciflora Torr. "Niggertoe" 21.10-2
Found on plains and hillsides of the Covillea belt.
New Mexico to southern Utah and southern California.
In Grand Canyon found along the Hermit Trail.

Anthericum L.

- Anthericum torreyi Baker "Craglily"
New Mexico and Arizona, southward into Mexico. South
Rim of Grand Canyon.

Fritillaria L.

- Fritillaria atropurpurea Nutt. "Fritillary" 21.13-2
Plains, canyons, and mountainous regions, upward to
9000 feet. North Dakota to New Mexico, westward to
Oregon and California. In Grand Canyon found at Grand

View Point on the South Rim.

Calochortus Pursh.

Calochortus nuttallii Torr. and Gray "Mariposa" "Sego
lily" 21.16-9

Found from Montana to New Mexico, westward to California in Lower Sonoran up to Transition Zone. This beautiful white tulip-like flower, delicately marked with lavender and purple is conspicuous in the Grand Canyon region, blooming throughout most of the spring and summer. It is the state flower of Utah.

Yucca L. "Spanish bayonet" "Soap weed"

Yucca baccata Torr. 21.18-4

Texas to Colorado and Nevada. Dry mesas of Upper and Lower Sonoran Zones. One of the typical plants of the belt. Found on both rims of the Grand Canyon.

Yucca baileyi "Narrow leaved yucca" 21.18

Common in Lower Sonoran Zone of Grand Canyon. Occasionally in Upper Sonoran.

Yucca whipplea Torr. "Quixote Plant" 21.18

Commonly found in the cismontane chaparral belt of Southern California, as far north as Kings River and south to Lower California. Questionable as to distinction from *Y. baileyi*. Believed to be here by Mrs. Susan Delano McKelvey.

Nolina Michx.

Nolina bigelovii (Torr.) Wats. "Bear grass" 21.18a

Occurs in mountains; southern borders of the Colorado Desert, south to Lower California, east to Arizona. Found on Darwin Plateau under Bass Camp, and all along the Esplanade, south of River. Also occurs north of the River around Shinumo Creek and Powell Plateau.

Vagnera Adans. "False Solomon seal" 21.21-2

Vagnera liliacea (Greene) Rydb.

Shaded places of the Transition and Canadian Zones. British Columbia to New Mexico and California. At the Grand Canyon it occurs on both rims.

Amaryllidaceae "Amaryllis family"

Agave L. "Century plant" "Mescal"

Agave utahensis Engelm. 22.1-1

Southern Utah, Nevada, Arizona and Southern California. In desert areas and mountain sides of Lower and Upper

Sonoran Zones. Found in considerable abundance on both rims of the Grand Canyon, and also down in the canyon.

Orchidaceae "Orchid family"

Habenaria Willd.

Habenaria thurberi Gray "Rein Orchid" 24.2

Found in damp places in the Southwest, ranging up through the Rockies. In Grand Canyon found at Roaring Springs.

Ibidium Salisb. "Ladies-tresses"

Ibidium romanzoffianum (Cham.) 24.4-1

Newfoundland to Alaska, southward to New York, Colorado and California. Bogs and wet places in the Canadian Zone. Occurs on the Kaibab in washes, and near ponds and springs.

Peramium Salisb. "Rattlesnake-plantain"

Peramium decipiens (Hook) Piper 24.6-1

Transition and Canadian Zones. Quebec to Alaska, southward to New Hampshire, Arizona and California. Collected on Kaibab Plateau in woods near V.T. Park.

Corallorrhiza Chatelain "Coral root"

Corallorrhiza maculata occidentalis (Lindl.) 24.8-1

British Columbia to California and eastward. Canadian Zone. Found on the Kaibab in June growing in moist shady places in the forest.

2. DICOTYLEDONES

Salicaceae "Willow family"

Populus L. "Poplar"

Populus tremuloides aurea (Tidestrom) Daniels
"Rocky Mountain Aspen" 26.1-3

Very much like the eastern *Populus tremuloides*. Saskatchewan to New Mexico and Arizona, westward to California forming dense groves in the Upper Transition and Canadian Zones. On Kaibab Plateau it is a very prominent tree.

Populus fremontii S. Watson "Fremont Cottonwood" 26.1-7

Utah and Arizona to California along water courses in Lower and Upper Sonoran Zones. Occurs along banks of Bright Angel Creek. This identification is by V. Bailey.

Salix L. "Willow"

- Salix gooddingii Ball. "Dudley Willow" 26.2-3
Nevada and California to New Mexico. Along streams of Lower Sonoran Zone. Occurs along the banks of Bright Angel Creek.
- Salix exigua Nutt. 26.2-8
Along streams, upwards to 6000 feet. Saskatchewan to British Columbia, southward to Mexico. In Grand Canyon found along Hermit Trail.
- Salix bebbiana Sarg. "Bleak Willow" 26.2-16
Along streams and in canyons from Upper Sonoran Zone through Canadian Zone. Quebec to New Jersey, westward to Alaska and California. At the Grand Canyon it was collected on Point Imperial on the North Rim.
- Salix taxifolia H.B.K. "Yew-leaf Willow" 26.2
A southwestern form. Believed to extend up through the Rockies, as well as down into Mexico. In Grand Canyon found along Hermit Trail.

Betulaceae "Birch Family"

Ostrya Scop.

- Ostrya knowltoni Coville "Hop hornbeam" 27.1-1
Canyons of the pinyon belt. Utah and Arizona. In Grand Canyon found in Bright Angel Canyon and in Nankowep Basin.

Betula L.

- Betula fontinalis Sargent "Red Birch" "Black Birch" 27.2-1
Along creeks in canyons of the pinyon and Aspen belts. Saskatchewan to Nebraska, British Columbia, and California. In Grand Canyon found at Bright Angel Spring and at South Big Spring. Found only on the North Rim.

Fagaceae "Beech family"

Quercus L. "Oak"

- Quercus utahensis (A. de Candolle) Rydb.
Quercus gambelii Nutt. 28.2-2
"Rocky Mountain White Oak"
Extreme southwestern Wyoming to Utah, New Mexico and Arizona. Forms dense colonies in the Upper Sonoran and lower Transition Zones. Both rims of Grand Canyon.
- Quercus undulata Torr. 28.2-4
Canyons and slopes, upward to 3600 feet; southern Utah. Northern New Mexico to southern Utah and southern Texas. In Grand Canyon found in Shinumo country, and down Muav Canyon.

- Quercus wilcoxii Nutt. "Wilcox Oak" 28.2-5
Canyons and dry hillsides upward to 3600 feet; southern Utah, Nevada, and Arizona. In Grand Canyon found on both sides of the river. Found in Bass Canyon.
- Quercus dumosa var. turbinella Jepson 28.2-6
Quercus turbinella Greene
Found from southern Utah and Nevada to New Mexico and Southern and Lower California. Ranges up to Transition Zone and occurs on the Kaibab Plateau.
- Quercus pungens Liebm. "Holly Oak" 28.2
New Mexico, Colorado, Utah and Arizona in the Lower Sonoran Zone. In Grand Canyon north of the river.
- Ulmaceae "Elm family"
Celtis L. "Hackberry"
Celtis reticulata Torr. "Polo Blanco" 29.1-1
From western Texas to Oklahoma and through southern New Mexico and Arizona. It was found in Havasu Canyon and down Bright Angel trail.
- Moraceae "Mulberry family"
Morus L. "Mulberry"
Morus microphylla Buckley "Small-leaved mulberry" 31.1-1
From Texas and southern New Mexico to Arizona and Mexico. Cultivated in Havasupai Canyon.
- Urticaceae "Nettle family"
Urtica L. "Nettle"
Urtica breweri S. Wats. 32.1-1
Found from Utah to California and Oregon. In valleys and canyons of Upper Sonoran and Transition Zones. Appears along Bright Angel Creek and on the Kaibab.
- Loranthaceae "Mistletoe family"
Razoumofskya Hoffm.
Razoumofskya cryptopoda (Engelm.) Coville 33.2-2
South Dakota to Montana, New Mexico, Arizona, on *Pinus ponderosa* and allied species. Collected on North Rim of Grand Canyon.
Razoumofskya divaricata (Engelm.) Coville "Pinon Mistletoe" 33.2-3
On *Pinus edulis* and allies. Southern Colorado, and New Mexico to Nevada. Found in Grand Canyon on both rims.
- Santalaceae "Sandalwood family"
Comandra Nutt. "Bastard Toad-flax"

- Comandra pallida A.DC. 34.1-1
Plains and hillsides from Lower Sonoran to Canadian Zone. Minnesota to Texas, California, British Columbia. At the Grand Canyon it occurs on Powell Saddle.

Polygonaceae "Buckwheat family"

Eriogonum Michx. "Wild buckwheat" "Umbrella plant"

- Eriogonum deflexum Torr. 35.4-7
Southwestern Utah and Nevada to Arizona and California. Desert areas and hillsides of Lower and Upper Sonoran Zones. South rim of Grand Canyon.
- Eriogonum cernuum Nutt. 35.4-13
Montana and Idaho southward to New Mexico and Nevada. Upward to Canadian Zone. North rim of Grand Canyon.
- Eriogonum plumatella Dur. and Hilg. 35.4-34
Desert areas and hillsides of the Lower Sonoran Zone. Southern Utah, Nevada, and Southern California. At the Grand Canyon it was collected at Point Sublime.
- Eriogonum wrightii Torr. 35.4-36
Valleys and mountain sides of Upper Sonoran Zone. Colorado to California, southward to Texas and Mexico. At the Grand Canyon it was collected at Waterloo Hill.
- Eriogonum racemosum Nutt. 35.4-39
Colorado to Texas, Arizona and Nevada. Canyons and mountain sides from Upper Sonoran to Canadian Zone. Occurs on both rims of the Grand Canyon.
- Eriogonum sulcatum Wats. 35.4-40
Rocky places of the artemisia and pinyon belts. Southern Utah, Arizona and Nevada. Common on the North Rim.
- Eriogonum simpsoni Benth. 35.4-42
Colorado and New Mexico to Nevada. Plains and foothills of Upper Sonoran Zone. Collected on the North Rim of Grand Canyon.
- Eriogonum microthecum Nutt. 35.4-44
Montana to Washington, southward to Colorado and California, from Upper Sonoran to Canadian Zone. On South Rim of Grand Canyon and at Pt. Sublime on the North Rim.
- Eriogonum jonesii S. Wats. 35.4-47
Distribution limited to Utah and Arizona on plains and hillsides of Upper Sonoran Zone. Occurs on north rim of Grand Canyon.
- Eriogonum aureum Jones "Golden Eriogonum" 35.4-49
Covillea and artemisia belts. Southern Utah. In Grand Canyon found on the rocky points of the North Rim.
- Eriogonum polifium Benth. 35.4-58
Desert areas and mountain sides of the Covillea belt.

- Southern Utah, Arizona, and southern California. Quite common on North Rim out on rocky points.
- Eriogonum ovalifolium Nutt. 35.4-70
Plains and mountain sides of the artemisia belt, upward to the spruce belt. Alberta to Washington southward to New Mexico and Arizona. Found in Grand Canyon on the North Rim out on rocky points and in Slide Canyon.
- Eriogonum alatum Torr. 35.4-77
Plains and mountain sides of the artemisia belt, upward to the spruce belt. Nebraska to Texas, westward to Wyoming and Arizona. Found on the south side of the River and on the South Rim, especially on Huxley Terrace.
- Eriogonum triste S. Wats. 35.4-78
Southern Colorado and Utah to Arizona and Texas. Sand and mountain sides of Upper Sonoran and Transition Zones Found on the North Rim of Grand Canyon.
- Eriogonum stellatum Benth. 35.4-83
Washington to Utah, Nevada, and California. Upper Sonoran, Transition, and Canadian Zones. At the Grand Canyon it is found on the North Rim.
- Eriogonum neglectum Greene 35.4-84
Upper Sonoran to Canadian Zone. Wyoming and Colorado to Nevada. At Grand Canyon it occurs on Powell Saddle Plateau.
- Eriogonum arcuatum Greene
- Eriogonum jamesii flavescens Benth. 35.4-93
Wyoming to New Mexico, Utah, and Arizona. Transition, Canadian, and Alpine Zones. Occurs on both rims of the Grand Canyon.
- Eriogonum gysophyllum Wott. and Standl. 35.4
Restricted range found on North Rim.
- Rumex L. "Dock" "Sorrel"
- Rumex occidentalis S. Wats. 35.6-5
Meadows and canyons of the artemisia belt, upward to the spruce belt. Labrador to Alaska, southward to the Dakotas, New Mexico and California. Found on the North Rim of the Grand Canyon along the highway.
- Rumex mexicanus Meisn. 35.6
Labrador to British Columbia, southward to Maine, Missouri and Mexico. Wet places in valleys and canyons of Upper Sonoran and Transition Zones. Kaibab Plateau.
- Polygonum "Knotweed" "Deerweed" "Knotgrass"
- Polygonum aviculare L. "Knotgrass" 35.8-3

- Introduced from the Old World. Found from Newfoundland to Virginia, New Mexico, and California. Grows on waste ground. Occurs on the North Rim of Grand Canyon.
- Polygonum sawatchense Small 35.8-5
Ranges from South Dakota to New Mexico, westward to Washington and California. Grows in Transition and Canadian Zones. Found on the North Rim of Grand Canyon, and at Trash Tank on the South Rim.
- Polygonum montanum (Small) Greene 35.8-8
Alberta to New Mexico and California. Canadian and Alpine Zones. Kaibab Plateau.
- Polygonum aequale Lindman 35.8
Kaibab Plateau.
- Polygonum douglasii Greene 35.8-10
Ranges from Vermont and New York westward to British Columbia and California. From Upper Sonoran to Canadian Zones. At Grand Canyon it is found on the North Rim.
- Polygonum watsoni Small 35.8
Same distribution as *P. douglasii*.
- Bistorta Mill. "Bistort"**
- Bistorta bistortoides (Pursh) 35.10-3
Montana to British Columbia, southward to New Mexico and California. From Canadian to Alpine Zones. Occurs on the Kaibab Plateau.
- Chenopodiaceae "Goosefoot family"**
- Chenopodium L. "Goosefoot"**
- Chenopodium watsoni A. Nels. 36.4-11
Montana to New Mexico, Arizona. Foothills and mountains up to Transition Zone. Kaibab Forest.
- Chenopodium album L. "Lamb's Quarters" 36.4-14
Newfoundland to Alaska, south to Florida and California. Europe, Asia, and North Africa. At Grand Canyon it occurs on the Kaibab, in waste places and along roads. Introduced.
- Chenopodium rubrum L. 36.4-19
Bottom lands, margins of ponds, and open woods, upwards to 6000 feet. Newfoundland to New Jersey, westward to British Columbia and Northern New Mexico; also in Europe and Asia. Found on North Rim in South Big Spring Canyon.
- Atriplex L. "Salt bush"**
- Atriplex argentea Nutt. "Stinking weed" 36.6-6
Western North Dakota to New Mexico and California. Alkaline plains and in valleys. Kaibab Plateau.

- Atriplex canescens (Pursh) Nutt. "Fourwing saltbush" 36.6-31
 South Dakota to Oregon, California and Mexico. Lower and Upper Sonoran Zones. At the Grand Canyon it is found at Phantom Ranch and at Pasture Wash.
- Grayia Hook. "Hop-sage"
Grayia spinosa (Hook) (Local range?) 36.8-1
 Plains and dry slopes between Lower and Upper Sonoran Zones. Wyoming and Utah, westward to Washington and California.
- Eurotia Adans. "Winter-fat"
Eurotia lanata (Pursh) 36.9-1
 Plains and dry sides of mountains of the Lower and Upper Sonoran Zones. Saskatchewan to Texas, westward to Washington and California. Collected on South Rim of Grand Canyon, Pasture Wash.
- Salsola L.
Salsola pestifer A.Nels. "Russian thistle" 36.16-1
 Desert area, plains, and foothills of the Covillea, artemisia, and pinyon belts; introduced and established throughout western U.S. Native to Russia and western Asia. Found on South Rim profusely.
- Amaranthaceae "Amaranth family"
Amaranthus L.
Amaranthus powellii S. Wats. 37.1-7
 Wyoming to Oregon, southward to Mexico. Lower Sonoran to Canadian Zones. Cultivated fields, waste grounds, and canyons. North Rim of Grand Canyon.
- Nyctaginaceae "Four o'clock family"
Boerhaavia L.
Boerhaavia wrightii A. Gray 38.4-1
 Plains of the Covillea belt. Western Texas to southern Nevada. Found in Grand Canyon along Bright Angel Creek.
- Abronia Jess. "Sand verbena"
Abronia nana S. Wats. 38.6-2
 Southern Utah and Arizona to California. Rocky slopes and canyons of Upper Sonoran and Transition Zones. Found in Kaibab Forest.

Wedeliella Cockerell

- Wedeliella incarnata (L.) Cockerell 38.7-1
Plains and hillsides of the Covillea and artemisia belts.
Colorado and Utah to Texas, Mexico and South America.
Found quite commonly on the south side of the river in
Grand Canyon.

Alliona Loefl. "Umbrellawort"

- Alliona pumila Standl. 38.8-1
Southwestern Nevada and Arizona. Lower Sonoran Zone.
South rim of Grand Canyon.
- Alliona linearis Pursh 38.8-3
Plains and hillsides of the Upper Sonoran Zones. South
Dakota to Missouri, Texas, Arizona and Utah. South Rim
of Grand Canyon and at Phantom Ranch.

Hesperonia Standl.

- Hesperonia retrorsa (Heller) Standl. 38.9-1
Among rocks, in canyons, and on hillsides of the Covil-
lea belt (and artemisia belt). California and Nevada.
Found in canyon at Grand Canyon at Phantom Ranch.

Quamoclidion Choisy

- Quamoclidion multiflorum Torr. "Four o'clock" 38.11-2
Colorado, Utah, Texas and Mexico. Lower and Upper
Sonoran Zones. South Rim of the Grand Canyon at
Pasture Wash.

Portulacaceae "Purslane family"

Oreobroma Howell "Bread root"

- Oreobroma pygmaeum (A.Gray) Howell 40.2-2
Ranges from Montana to Colorado, westward to Washington
and California. In Canadian and Alpine Zones. At the
Grand Canyon it grows on the Kaibab Plateau in the Parks
where it is a conspicuous flower in the early part of
June. It blooms with Phlox caespitosa.

Silenaceae "Pink family"

Alsine L. "Chickweed"

- Alsine jamesiana (Torr.) 42.1-1
Stellaria jamesiana Torr.
Wyoming to New Mexico, California and Washington.
Transition and Canadian Zones. Occurs on the North Rim
of the Grand Canyon. Collected in Thompson Canyon.

- Cerastium L. "Mouse ear" "Chickweed" 42.2-6
Cerastium stictum L.
 Wyoming to New Mexico, South Dakota to British Columbia southward to Colorado and Utah. Also in Europe and Asia. Plains and mountain sides upward to Canadian Zone. Occurs in considerable abundance in the parks of the Kaibab Plateau.
- Arenaria L. "Sandwort" 42.4-3
Arenaria confusa Rydb.
 Aspen and spruce belts. Colorado, southwestern Utah, New Mexico and Arizona. Found in the Aspen and Spruce stands on the North Rim of the Grand Canyon.
- Arenaria compacta Coville 42.4-9
 Canadian Zone. Utah to California. Found in the parks of the Kaibab Plateau.
- Arenaria aculeata S. Wats. 42.4-10
 Pinyon belt upward to 9000 feet. Idaho and Oregon, southward to Nevada and Arizona. Found in the meadows on the North Rim of the Grand Canyon.
- Arenaria fendleri A. Gray 42.4-12
 Wyoming to New Mexico and Arizona. In Transition, Canadian and Alpine Zones. Found on both rims of the Grand Canyon.
- Arenaria eastwoodiae Rydb. 42.4-13
 Artemisia, pinyon and yellow pine belts. Colorado, Utah and New Mexico. Found on the North Rim of Grand Canyon.
- Silene L. "Campion" 42.9
Silene pringlei Wats. "Sticky Catchfly"
 Found in the Yellow Pine belts of the Southwest. In Grand Canyon found on the North Rim under Yellow Pine. It is quite rare.
- Ranunculaceae "Buttercup family"
 Caltha L. "Marshmarigold" 45.2-2
Caltha leptosepala DC.
 Ranges from Alberta to British Columbia and New Mexico. Confined to Canadian Zone. At the Grand Canyon it appears in damp places in the parks on top of the Kaibab Plateau.
- Aquilegia L. "Columbine" 45.5-6
Aquilegia elegantula Greene
 Spruce and subalpine belts; eastern Utah. Southern Colorado, New Mexico and adjacent Utah. In Grand Canyon

- found in more shaded and damp parts of the North Rim.
- Aquilegia micrantha Eastw. "Yellow columbine" 45.5-8
 Found in southwestern Colorado, Utah and Arizona. In canyons of Upper and Lower Sonoran Zones. At Grand Canyon it grows in damp crevices of rocks at Ribbon Falls and along Bright Angel Creek. In the Kaibab Plateau it is found at Cliff Springs.
- Aquilegia caerulea James "Columbine" "Colorado Columbine" 45.5-9
 Aspen belt, upward to 9900 feet; rare in Utah; Mt. Terrell. Montana, New Mexico and Utah. State flower of Colorado. Found in rather shady places on the North Rim of the Grand Canyon.
- Aquilegia pinetorum Tidestrom 45.5-10
 Aspen, yellow pine, and spruce belts; yellow pine area Buckskin Mountains (Kaibab Plateau) northern Arizona. Found at Greenland Spring on North Rim of Grand Canyon.
- Aquilegia triternata Payson 45.5
 Found in Southwest and in the Rockies. In Grand Canyon found on North Rim and near Ribbon Falls in the canyon.
- Delphinium L. "Larkspur"
- Delphinium amabile Tidestrom 45.6-8
 Plains and dry hillsides. Southern Utah, Nevada and Arizona. Found in Grand Canyon at Pipe Creek.
- Delphinium scaposum Greene 45.6-9
 Found in Colorado, Utah, New Mexico and Arizona. On mesas and dry slopes of Lower and Upper Sonoran Zones. At Grand Canyon appears on both north and south rims.
- Delphinium menziesii DC. 45.6-13
- Delphinium nelsonii Greene
 Ranges from British Columbia and Idaho southward to California and New Mexico, in Transition and Canadian Zones. It is fairly abundant in the parks on top of the Kaibab Plateau, where it is among the earliest flowers blooming in June. It occurs also on the South Rim.
- Anemone L. "Anemone"
- Anemone tuberosa Rydb. 45.8-1
 Covillea belt. Southern Utah and Nevada southward. Found in Grand Canyon in Bright Angel Canyon.
- Anemone hispida A. Gray 45.8
 Found along Kaibab Trail on north side of Grand Canyon.
- Clematis L. "Western virgin's bower"
- Clematis ligusticifolia Nutt. 45.10-1

- North Dakota to British Columbia. Southward to New Mexico and California. Grows in canyons and on hillsides of Upper Sonoran and Transition Zones. At Grand Canyon it is found on the North Rim; also on the south side below Coconino on Bright Angel Trail
- Clematis pseudoalpina (Kuntze) Nels. 45.10-6
Yellow pine, aspen and spruce belts. Colorado, Utah and New Mexico. Found on Kaibab Trail in Grand Canyon.
- Myosurus L. "Mouse tail"
Myosurus arisatatus Benth. 45.11-1
Montana to Washington southward to New Mexico and California. Muddy places in the Great Basin. Up to Transition Zone. On the North Rim of the Grand Canyon.
- Ranunculus L. "Buttercup"
Ranunculus alismaefolius Geyer. Benth. 45.13-3
Found in Rockies and West. In Grand Canyon found on the North Rim. Ordinarily found in wet places from Wyoming to Nevada, Colorado, Utah and Oregon.
- Ranunculus glaberrimus Hook. 45.13-5
Ranges from British Columbia to the Dakotas to New Mexico and California. Grows on plains and hillsides and canyons in Upper Sonoran and Transition Zones. Is found on the North Rim of Grand Canyon.
- Ranunculus subsagittatus (A.Gray) Greene 45.13-6
Range limited to northern Arizona and New Mexico. Found in Canadian Zone. Abundant in parks on top of the Kaibab Plateau.
- Ranunculus inamoenus Greene 45.13-7
Found in Montana and Idaho running southward to New Mexico and Arizona. Grows in damp places in Transition and Canadian Zones. Found on Kaibab Plateau near springs and pools.
- Ranunculus cardiophyllus Hook. 45.13
Found in Rockies. Found on North Rim of Grand Canyon. In wet bogs and meadows from Saskatchewan to Colorado.
- Thalictrum "Meadow rue"
Thalictrum fendleri Engelm. 45.16-7
Found from Wyoming to New Mexico, Arizona and Nevada. In Transition and Canadian Zones. Appears on North Rim of Grand Canyon in damp places. Collected in South Canyon.
- Thalictrum wrightii A. Gray 45.16
New Mexico, Arizona and Southwest. North Rim of Canyon.

- Berberidaceae "Barberry family"
 Odostemon Raf. "Hollygrape"
Odostemon repens (Lindl.) Cockerell 46.1-1
 Berberis repens Lindl.
 Alberta to western Nebraska, New Mexico, California.
 Upper Sonoran, Transition and Canadian Zones. Both
 rims of Grand Canyon.
Odostemon fremontii (Torr.) Rydb. 46.1-2
Berberis fremontii Torr.
 Southern Colorado, New Mexico, Nevada, Arizona. Upper
 Sonoran Zone. Both rims of Grand Canyon.
- Papaveraceae "Poppy family"
 Argemone L. "Prickly poppy" "Thistle poppy"
Argemone platyceras Link and Otto 47.3
 Southern Wyoming to Mexico. Upper Sonoran. North Rim
 of Grand Canyon.
Argemone hispida A. Gray 47.3
 Wyoming to New Mexico and California. Upper Sonoran.
 Both rims of Grand Canyon.
- Fumariaceae "Fumitory family"
 Capnoides Adans.
Capnoides aureum (Willd.) Kuntze 48.2-2
 Canadian Zone. Apparently rare in Utah. Canada to
 Pennsylvania, Texas and California. Found on the South
 Rim of Grand Canyon.
- Brassicaceae "Mustard family"
 Stanleya Nutt.
Stanleya pinnata (Pursh) Britton 49.1-4
 Plains and dry slopes of the Artemisa and pinyon belts.
 South Dakota to Nebraska and Utah. Found in the Canyon.
Stanleya arcuata Rydb. 49.1-5
 Plains and hillsides of the Covillea and Artemisa belts.
 Wyoming to northwestern New Mexico and California.
 Found in the Canyon.
- Hesperidanthus (Robinson) Rydb.
Hesperidanthus linearifolius (A.Gray) Rydb.
 Colorado, Texas, Arizona, Mexico. Transition and
 Canadian Zones. Kaibab Forest and South Rim.
- Thelypodium Endl.
Thelypodium wrightii A.Gray 49.3-9
 Rocky places in the Covillea, artemisia, and pinyon

- belts. Colorado to Nevada and southward. Found near Grand View in Grand Canyon.
- Thelypodium linearifolium (Gray) Wats. 49.3
Found on North Rim of Grand Canyon. In river valleys and on hillsides from Colorado to Texas and Arizona, also in Mexico.
- Streptanthus Nutt.
- Streptanthus cordatus Nutt 49.5-3
Plains, foothills and canyons of artemisa and pinyon belts. Wyoming and Colorado, westward to Sierra Nevada. Found on North Rim, and also along Yaki Trail.
- Lepidium L. "Pepper grass"
- Lepidium jonesii Rydb. 49.7-9
Plains and dry, sunny slopes of artemisa and pinyon belts. Utah and Nevada. Rim of inner Canyon, Toroweap Valley - Grand Canyon.
- Lepidium densiflorum Schrad. 49.7-12
Ranges from Hudson Bay to British Columbia, southward to New York and New Mexico. Grows on plains in Upper Sonoran Zone. Found on North Rim of Grand Canyon.
- Thlaspi L "Pennycress"
- Thlaspi purpurascens Rydb. 49.8-
Found in Colorado, Utah, Arizona and New Mexico. In Canadian and Alpine Zones. At Grand Canyon it occurs in the Kaibab Parks in abundance.
- Sisymbrium L. "Watercress"
- Sisymbrium nasturtium-aquaticum 49.17-1
Introduced from Europe. Throughout most of temperate North America and Europe. Wet places about springs and running water. Found in the Kaibab Forest.
- Radicula Hill "Yellow water-cress"
- Radicula alpine (S.Wats.) Greene 49.18-5
Montana, Colorado, Utah and Idaho. Wet places in the mountains in Canadian and Alpine Zones. Kaibab Forest.
- Lesquerella S. Wats. "Bladderpod"
- Lesquerella kingii Wats. 49.23-1
Rocky canyons and mountains sides of aspen and spruce belts. Utah and Nevada. In Grand Canyon found on the North Rim.

- Lesquerella arizonica S.Wats. "Arizona Bladderpod" 49.23-4
Arizona and southern Utah. Hillsides and canyons.
Kaibab Plateau and South Rim of Grand Canyon.
- Lesquerella purpurea (A.Gray) Wats. 49.23
Western Texas to Arizona; South into Mexico. Found on
the South Rim of Grand Canyon near the Village.
- Draba L. "Whitlow grass"
Draba asprella Greene 49.28-1
Distribution limited to southern Utah and Arizona. It
grows in damp places in the Transition Zone. At the
Grand Canyon it occurs on the North Rim.
- Thysanocarpus Hook.
Thysanocarpus amplexans Greene 49.30-1
Covillea, artemisia and pinyon belts. Southern Utah,
Arizona and New Mexico. Found on the North Rim and at
Phantom Ranch.
- Sophia Adans. "Tansy mustard"
Sophia pinnata (Walt.) Howell 49.32-2
Pennsylvania to Florida and California. Plains and
slopes of Upper Sonoran Zone. North Rim of Grand Canyon.
- Sophia incisa (Engelm.) Greene 49.32-3
Aspen and spruce belts. Wyoming to New Mexico, Utah and
Nevada. In Grand Canyon found on North Rim at Greenland
Spring.
- Sophia filipes (A.Gray) Heller 49.32-4
Canyons and mountain sides, upward to spruce belt.
Saskatchewan to North Dakota, California and British
Columbia. Found in Grand Canyon along Hermit Trail.
- Arabis L. "Rockoress"
Arabis perennans S.Wats. 49.34-23
Plains and dry hillsides of the Covillea and artemisia
belts. Southern California, Nevada, Utah and Arizona.
Found in the Canyon around Roaring Springs.
- Arabis fendleri (S.Wats.) Greene 49.34
Found in the Sierras and thence eastward to New Mexico.
Found in Grand Canyon along Hermit Trail.
- Cheirinia Link "Blisteroress"
Cheirinia elata (Nutt.) Rydb. 49.35-10
Artemisia plains, mountain sides and canyons, upward to
spruce belt. North Dakota to New Mexico, westward to
Washington and California. Found on the South Rim and

in sage flats in the Grand Canyon.

- Cheirinia oblanceolata Rydb. 49.35-12
Aspen, Spruce and subalpine belts. Wyoming, Colorado
and Utah. Found on Kaibab Plateau and at Greenland
Spring.

Capparidaceae "Capper family"

Cleome L. "Bee plant"

- Cleome serrulata Pursh "Blue Colorado bee plant" 50.1-1
Saskatchewan to Missouri westward to Washington and Ari-
zona. Upper Sonoran and Transition Zones. Kaibab
Plateau.

- Cleome lutea Hook "Yellow bee plant" 50.1-2
Nebraska to New Mexico, Arizona and Washington. Plains
and mountain sides of Upper Sonoran Zone. Kaibab
Plateau.

Crassulaceae "Stonecrop family"

Sedum L. "Stonecrop"

- Sedum stenopetalum Pursh 53.1-2
Rocky places of the Canadian Zone. South Dakota to
Nebraska, New Mexico and California. Found on the North
Rim of Grand Canyon.

Saxifragaceae "Saxifrage family"

Saxifraga L. "Saxifrage"

- Saxifraga rhomboidea Greene 54.5-5
Spruce and alpine belts. Montana to New Mexico, Utah
and Nevada. Found on North Rim of Grand Canyon.

Heuchera L. "Alumroot"

- Heuchera rubescens Torr. 54.5-1
Lower Sonoran to Canadian Zone. Utah to New Mexico,
westward to Oregon and eastern California. Found on
South Rim of Grand Canyon growing on north facing rocks
over the rim.
- Heuchera parviflora Nutt.; T. & G. 54.5-5
Aspen, spruce and alpine belts. Alberta to eastern Ore-
gon, southward to New Mexico and Arizona. Found in the
region of Bass Camp in secluded area on South Rim of
Grand Canyon. Also found at Grand View.
- Heuchera novomexicana Wheelock 54.5
Mountains of New Mexico and Arizona. North Rim of
Grand Canyon.

Lithophragma Nutt. "Woodland Star"

- Lithophragma bulbifera Rydb. 54.6-2
Yellow Pine, Aspen and spruce belts. Montana and British Columbia, southward to Black Hills, South Dakota, Colorado and California. Found in Yellow Pine near Grand View on the South Rim of the Grand Canyon.

Hydrangeaceae "Hydrangea family"

Philadelphus L. "Mock orange"

- Philadelphus argenteus Rydb. 56.1-4
Found in Arizona and southwestern New Mexico. In Grand Canyon found near Bass Camp on the South Rim.
- Philadelphus serpyllifolius A.Gray "Syringa" 56.1
General range? Found on North Rim of Grand Canyon.
- Philadelphus argyrocalyx Woot. 56.1
Given only in White and Sacramento Mountains of New Mexico. Found on the North Rim of the Grand Canyon.

Fendlera Engelm. and Gray

- Fendlera rupicola A. Gray 56.3-1
Colorado to Nevada, New Mexico and Arizona. Upper Sonoran Zone. South Rim of Grand Canyon and north of the river in the canyon.

Fendlerella Heller

- Fendlerella cymosa Greene 56.4
Arizona and New Mexico to northern Mexico. Found in Kaibab Forest and also in canyon along Kaibab Trail.
- Fendlerella utahensis (S.Wats.) Heller 56.4-1
Rocky canyons and mountain sides of the pinyon, yellow pine and aspen belts. Utah, Nevada and Arizona. Found on most of the rocky points of the South Rim, especially Grand View Point.

Grossulariaceae "Gooseberry family"

Ribes L. "Currant"

- Ribes cereum Dougl. "Wax currant" 57.1-5
Upper Sonoran, Transition and Canadian Zones. Montana to British Columbia, southward to Arizona and California. At Grand Canyon it was collected at head of North Canyon on Kaibab Plateau. Also believed to occur on South Rim.
- Ribes inebrians Lindl. 57.1-6
Upper Sonoran to Canadian Zone. South Dakota to western Nebraska, westward to Montana, central California and Arizona. At Grand Canyon it was collected east of Grand

- View on South Rim and at Cape Royal on the North Rim.
Ribes viscosissimum Pursh 57.1-7
 Transition and Canadian Zones. Montana to British Columbia, southward to Colorado and California. It occurs on the South Rim of Grand Canyon east of Grand View.
- Grossularia Mill. "Gooseberry"
Grossularia leptantha (A.Gray) Coville & Britton 57.2-3
 Transition and Canadian Zones. Colorado, Utah, New Mexico and Arizona. At Grand Canyon was collected under Grand View on South Rim; at Bright Angel Point on Kaibab Plateau, as well as Powell Plateau and North Canyon.
Grossularia velutina (Greene) Coville & Britton 57.2-5
 "Desert Gooseberry"
 Upper Sonoran, Transition and Canadian Zones. Utah, Oregon, Arizona and Southern California. Found near Grand View on the South Rim.
Grossularia inermis (Rydb.) Coville & Britton 57.2-7
 "Wine Gooseberry"
 Transition and Canadian Zones. Montana to British Columbia, southward to New Mexico and California. At Grand Canyon it was collected at Point Imperial on North Rim.
Grossularia brachyantha 57.2
 North Rim.
Grossularia sarothrae 57.2
 North Rim
- Rosaceae "Rose family"
 Petrophytum Rydb.
Petrophytum caespitosum (Nutt.) Rydb. "Rock Rose" 58.3-1
 Distributed from South Dakota and Montana to New Mexico and California. Forms dense colonies on rocks from Upper Sonoran to Canadian Zones. Occurs on both sides of river in canyon and on South Rim. It is particularly abundant on the Redwall Limestone. It has been found only on limestone.
- Chamaebatiaria Maxim. "Fern-bush"
Chamaebatiaria millefolium (Torr.) Maxim. 58.4-1
 Plains, canyons and hillsides of Upper Sonoran up to Canadian Zones. Found on both rims of the Canyon; i.e. Cape Royal and Yaki Point.
- Sericotheca Raf. "Ocean Spray" "Mountain Spray"
Sericotheca obovata Rydb. 58.5-2
Sericotheca glabrescens (Green) Rydb.

- Canyons and mountain sides of Upper Sonoran and Transition Zones. Oregon and northern California to Utah.
Found along the North Rim of the Canyon.
- Sericotheca schaffneri Rydb. 58.5
Found on the North Rim of the Canyon.
- Potentilla L. "Cinquefoil"
- Potentilla paradoxa Nutt., Torr. & Gray 58.10-1
Wet ground of Covillea, artemisia and pinyon belts. New York to Washington, southward to New Mexico and Mexico.
- Potentilla rivalis Nutt. 58.10-2
On damp places of Lower and Upper Sonoran Zones. Saskatchewan to British Columbia and Mexico. Found on the North Rim of the Grand Canyon.
- Potentilla monspeliensis L. 58.10-5
Waste places, canyons and hillsides, upward to 9000 ft. Labrador to District of Columbia, California and Alaska; also Europe and Asia. In Canyon and on North Rim.
- Potentilla subviscosa Greene 58.10
Damp places at higher elevations on the Kaibab Plateau. New Mexico, Arizona and northern Mexico.
- Potentilla propinqua Rydb. 58.10-34
Ranges from Alberta to South Dakota and Arizona. Occurs in Canadian Zone on North Rim of the Canyon.
- Potentilla pulcherrima Lehm. 58.10-35
Found from Saskatchewan and Alberta southward to New Mexico and Nevada. Occurs in Canadian Zone and is found on the North Rim.
- Potentilla crinita A. Gray 58.10-41
Found in Colorado, Utah, New Mexico and Arizona. In Transition and Canadian Zones. Occurs on South Rim of the Canyon.
- Potentilla hippiana Lehm. 58.10
Found from New Mexico to British America. Found in moist parks of the mountains. Occurs on North Rim of Grand Canyon.
- Fragaria L. "Strawberry"
- Fragaria ovalis (Lehm.) Rydb. 58.12
From Canada to New Mexico and Nevada. As far as can be determined found only on the North Rim.
- Coleogyne Torr. "Black bush"
- Coleogyne ramosissima Torr. "Burro-bush" 58.18-1
Southwestern Colorado, Arizona, Nevada and California. Found on plateaus and mountain sides of the Lower and

Upper Sonoran Zones. Abundant on the Tonto in Grand Canyon.

Fallugia Endl. "Apache-plume"

Fallugia paradoxa (Don) Endl. 58.22-1
 Ranges from Colorado to Nevada, Arizona, Texas and Mexico. In Lower and Upper Sonoran Zones. It is fairly abundant in the Canyon and appears on both rims. The white flowers and long silvery, lavender plumes make it a shrub conspicuous for its beauty.

Cowania D. Don "Cliff-rose" "Quinine-bush"

Cowania mexicana D. Don 58.23-1
Cowania stansburiana Torr.
 Found in southern Colorado and ranges to Nevada, Southern California and Mexico. Typical of the Upper Sonoran Zone and runs into the Transition. It is found on both rims of the Canyon where it is a favorite food of deer. Blooms and fruits all summer.

Cercocarpus H.B.K. "Mountain Mahogany"

Cercocarpus montanus Raf. "Fan-leaf Mt. Mahogany" 58.25-1
 Found from South Dakota to western Kansas, westward to Montana, Nevada and Arizona. In Upper Sonoran and Transition Zones. Found on both sides of the River in the Canyon at the level of the Supai Formation.

Cercocarpus ledifolius Nutt. "Curl-leaf Mt. Mahogany" 58.25-2
 Upper Sonoran, Transition and Canadian Zones. Montana to Washington, southward to Colorado and Southern California. Common on rocky points of North Rim and found occasionally in such places on the South Rim.

Cercocarpus intricatus S. Wats. "Small-leaf Mt. Mahogany"
 Canyons and mountain sides of Upper Sonoran /58.25-3
 Zone. Utah, Nevada, Arizona and Southern California. Occurs on both rims and in the Canyon.

Cercocarpus arizonicus Jones "Arizona Mt. Mahogany" 58.25-4
 Canyons and mountain sides of Upper Sonoran Zone. Utah, Nevada and Arizona. Occurs on South Rim of the Canyon.

Rubus L. Raspberry

Rubus parviflorus Nutt. "White Flowering Raspberry" 58.26-1
 Canyons and wooded slopes of Canadian Zone. Western Ontario to British Columbia, southward to Michigan and California. Found north of the River down Bright Angel Canyon.

Rosa L. "Rose"

- Rosa neomexicana Cockerell "New Mexican Rose" 58.27-5
Southern Colorado and New Mexico to southern Nevada and Arizona. Transition and Canadian Zones. North Rim of Grand Canyon.
- Rosa fendleri Crepin "Fendler's Rose" 58.27-9
Upper Sonoran Zone to Canadian Zone. Minnesota to British Columbia and northern Mexico. Found east of Grand View on the South Rim of Grand Canyon.
- Rosa mirifica (Greene) 58.27
White and Sacramento mountains of New Mexico and also found in Arizona in the Grand Canyon.

Malaceae "Apple Family"

- Amelanchier Medic. "Shadblow" "Service-berry"
- Amelanchier goldmani W. and S. 59.1
Mountains of western New Mexico. At Grand Canyon it was collected in Bass Canyon and at Cape Royal.
- Amelanchier covillei Standl. 59.1-3
Aspen belt; Toiyabe Mountains. Southeastern California and southern Nevada. Found on the South Rim.
- Amelanchier utahensis Koehne "Utah Shadblow" 59.1-8
Upper Sonoran, Transition and Canadian Zones. Colorado and New Mexico, westward to Nevada and Arizona. Collected at Grand View on South Rim of Grand Canyon.

Sorbus L. "Mountain Ash"

- Sorbus sambucifolius 59.3
Occurs on the Kaibab Plateau
- Sorbus dumosa Greene 59.3
Collected at Point Imperial on the North Rim.

Amygdalaceae "Plum Family"

- Prunus L. "Plum" "Cherry"
- Prunus melanocarpa (A.Nels.) Rydb. "Black Choke Cherry"
Moist Canyons and mountain sides of the pin- / 60.1-3
yon, yellow pine and aspen belts. Alberta and British Columbia southward to New Mexico and California. At Grand Canyon found on North Rim at Neal Spring.

Mimosaceae "Mimosa Family"

- Acacia L. Cat-claw
- Acacia greggii A.Gray 61.2-1
Western Texas to southwestern Utah, Nevada and California. Lower Sonoran. In Grand Canyon on both sides of the River.

Prosopis L. "Mesquite"

- Prosopis glandulosa Torr. 61.4-1
Plains, desert areas and dry canyons of the Covillea and lower artemisia belts. Texas to southern Utah and California. In Grand Canyon found in abundance along the River and a short distance up the creeks.

Caesalpinaceae "Senna Family"

Cercis L. "Redbud"

- Cercis arizonica "Arizona Redbud" 62.1
California, Nevada and Arizona. Upper Sonoran Zone.
On both sides of the River in the Canyon.

Cassia L.

- Cassia covesii Wats. 62.5-1
Desert areas of Covillea belt. New Mexico to southern Nevada and California. Found along Clear Creek Trail in the Canyon.

Fabaceae "Pea Family"

Lupinus L. "Lupine" "Wolf's bean" "Blue Bonnet"

- Lupinus brevicaulis S. Wats. 64.3-3
Valleys, plains and mountain sides of Upper Sonoran and Transition Zones. Colorado to Arizona and Mexico, westward to Oregon and California. Kaibab Forest.
- Lupinus kingii S. Wats. 64.3-4
- Lupinus sileri S. Wats.
Plains, mountain sides and canyons of the artemisia belt upward to the Aspen belt. Colorado, New Mexico, Utah and Arizona. Found around Cape Royal on the North Rim.
- Lupinus caudatus Kellog 64.3-42
- Lupinus palmeri S. Wats.
Ranges from Oregon and Nevada to Wyoming and Utah. Upper Sonoran and Transition Zones. Found on the North Rim of Grand Canyon.
- Lupinus barbiger S. Wats. 64.3-43
Colorado, Utah, Arizona and California. Sandy plains and hills of Lower and Upper Sonoran Zones. Found on the North Rim of Grand Canyon.
- Lupinus meionanthus A. Gray 64.3-47
In granitic sand of yellow pine, aspen and spruce belts. Nevada and California. Collected on the North Rim of Grand Canyon.
- Lupinus ramosus E. Nels. 64.3
Coulter and Nelson give the range for this lupine as northwestern Wyoming. It was collected at Marble Flats

- on the North Rim of Grand Canyon.
- Lupinus hillii Greene 64.3
Found on the North Rim of Grand Canyon.
- Medicago L.
- Medicago lupulina L. 64.4-2
Fields and waste places; introduced from Europe. Nova Scotia to Florida, westward to Washington and California
Found on North Rim of Grand Canyon near Neal Spring.
- Trifolium L. "Clover"
- Trifolium dasyphyllum Torr. & Gray 64.6-18
Montana to Colorado and Utah. In Transition, Canadian, and Alpine Zones. On North Rim of the Canyon.
- Trifolium monanthum Gray (near var. glabrifolium McDer.)
Yellow pine, aspen and spruce belts. California and western Nevada. Found in meadows on North Rim. / 64.6-19
- Trifolium fendleri Greene 64.6-22
Valleys and mountain sides, upward to aspen belt. Colorado and Utah, southward to Mexico. Found on the North Rim along roads and in meadows.
- Trifolium pinetorum Greene 64.6
Found on the North Rim of Grand Canyon.
- Lotus L.
- Lotus longibracteatus Rydb. 64.7-9
Hillsides of artemisia belts. Southern Utah, Arizona and Nevada. Found on North Rim of Grand Canyon.
- Lotus rigidus Greene 64.7
Ranges in and bordering the deserts. California, east to Utah and Arizona; south to Lower California. Found on the North Rim of Grand Canyon.
- Psoralea L. "Scurf Pea"
- Psoralea mephitica S. Wats. 64.8-9
Distribution limited to southern Utah and Arizona. It occurs in the Lower and Upper Sonoran Zones. At Grand Canyon it has been reported only from the North Rim.
- Psoralea tenuiflora Pursh. 64.8
Montana and South Dakota to Arizona and Arkansas.
Found on the North Rim at Cape Royal.
- Petalostemon Michx. "Prairie Clover"
- Petalostemon oligophyllum (Torr.) Rydb. 64.10
Minnesota, Iowa, Texas, Arizona. Canadian Zone. Kaibab Forest

- Petalostemon flavescens S. Wats. 64.10-1
Utah and northern Arizona. Rocky hillsides of the Upper Sonoran Zone. North Rim of Grand Canyon
- Petalostemon searlsiae A. Gray 64.10-3
Southern Utah and Arizona. Rocky hillsides of the Upper Sonoran Zone. Kaibab Forest.
- Robinia L. "Locust"
Robinia neomexicana luxurians Dieck. 64.11-2
"Southwestern Locust"
Colorado through northern New Mexico and Arizona, and to southern Utah and western Texas. In canyons of Upper Sonoran and Transition Zones. Found on both rims of the Canyon.
- Astragalus L. "Milk Vetch"
Astragalus artipes A. Gray "Loco" 64.13-9
Southern Utah, Arizona and Nevada. Found in the Transition Zone on the North Rim of Grand Canyon.
- Astragalus ophorus S. Wats. 64.13-10
Valleys and gravelly hillsides of the artemisia and pinyon belts. Utah, California and Oregon. Found around Yaki Point on the South Rim.
- Astragalus diphyus A. Gray 64.13-28
Colorado, Utah, New Mexico and Nevada. On plains and hillsides of Lower and Upper Sonoran Zones. Appears on the North Rim of Grand Canyon.
- Astragalus thompsonae S. Wats. 64.13-33
Plains and foothills of the Upper Sonoran Zone, Utah. Found on the South Rim of the Canyon.
- Astragalus palans Jones 64.13-38
Foothills and canyons of the artemisia and pinyon belts. Utah and Arizona. Found at Shoshone Point on the South Rim of Grand Canyon.
- Astragalus scaposus 64.13-42
Found from Wyoming to New Mexico, Arizona and Utah. In Upper Sonoran Zone. Found on the South Rim.
- Astragalus amphioxys A. Gray 64.13-73
Plains and dry hillsides of the Covillea and artemisia belts. Southern Colorado to Nevada, southward to Texas and Arizona. In Grand Canyon on the Tonto.
- Astragalus purshii Dougl. 64.13-89
Plains, foothills, and canyons of the artemisia, pinyon, and yellow pine belts. Montana to British Columbia, southward to Colorado and California. Found on the South Rim near Hermit's Rest.

Astragalus convallarius Greene 64.13-105
Ranges through Wyoming, Colorado and Utah up to Canadian Zone. At Grand Canyon, found on the Kaibab Plateau.

Astragalus impensus (Sheld.) W. & S. 64.13-119

Kentrophyta impensa (Sheld.) Rydb.

Nevada to Colorado and northern New Mexico. In the Upper Sonoran Zone. Found around Cape Royal on the North Rim of the Canyon.

Astragalus hosackiae Greene 64.13

Distribution limited to Arizona and New Mexico. Low hills in Upper Sonoran Zone. Found on the North Rim of Grand Canyon.

Oxytropis DC. "Locoweed"

Oxytropis lambertii Pursh 64.14-3

Ranges from Minnesota to Montana, southward to Texas and Arizona. Grows on plains, hillsides and canyons upward to Transition Zone. Found on North Rim of the Canyon.

Vicia L. "Vetch"

Vicia americana Muhl. 64.18-6

Meadows, canyons and mountain sides of artemisia belt, upward to 9000 feet. New Brunswick to British Columbia, southward to Virginia and Arizona. Found on North Rim of the Canyon around Neal Spring.

Lathyrus L. "Pea"

Lathyrus graminifolius (S. Wats.) White 64.19-4

Yellow pine belt, Arizona, New Mexico and California, southward to Mexico. Found along the Hermit Trail on the south side of the River.

Lathyrus leucanthus Rydb. 64.19-8

Aspen and spruce belts. Wyoming to New Mexico and Utah. Found on the North Rim of the Canyon.

Phaseolus L. "Bean"

Phaseolus dilatatus W. & S. 64.

Mountains of southern New Mexico and Arizona. Found on the South Rim in Long Jim Canyon and at Rowe's Well.

Geraniaceae "Geranium Family"

Geranium L. "Cranes bill"

Geranium richardsonii Fisch. & Trautv 65.1-5

Geranium gracilentum Greene, Rydb.

Saskatchewan to New Mexico, westward to British Columbia and California. Transition and Canadian Zones. Occurs

commonly under aspen on the North Rim.

- Geranium atropurpureum Heller 65.1-7
 Colorado and southern Utah, southward to Mexico. Upper Sonoran through Canadian Zone, North Rim of the Canyon.
- Geranium furcatum Hanks 65.1
 Mountains of New Mexico and Arizona. Transition Zone. North Rim of Grand Canyon.
- Geranium fremontii Torr. 65.1-9
 Colorado, Utah, New Mexico and Arizona. North Rim.
- Geranium lentum W. & S. 65.1
 Mountains of western New Mexico. Transition Zone. Found in the Kaibab Forest.

Erodium L'Her "Filaree"

- Erodium cicutarium (L.) L'Her 65.2-1
 Waste ground, canyons and mountain sides, upward to the aspen belt; introduced from Europe. Canada to Virginia westward to California and Mexico. Found at Hermit's Rest on the South Rim of the Canyon.

Linaceae "Flax Family"

Linum L. "Flax"

- Linum lewisii Pursh. "Prairie Flax" 66.1-2
 Manitoba to Alaska, Texas, California and Mexico. Slopes, canyons and open flats of Upper Sonoran, Transition and Canadian Zones. Found along the roads on both rims of the Canyon.

Rutaceae "Rue Family"

Thamnosma Torr. & Frem.

- Thamnosma montana Torr. & Frem. "Turpentine Broom" 68.1-1
 Southern Utah to southeastern California and southward. Lower Sonoran Zone. Found in Hermit Basin in the Canyon. Blooms in late winter.

Ptelea L. "Hoptree"

- Ptelea baldwinii Torr. & Gray 68.2-1
 Florida to Texas, Utah and California, southward to Mexico. Lower and Upper Sonoran Zones. At Grand Canyon may be found down any of the trails into the Canyon.

Euphorbiaceae "Spurge Family"

Tithymalus Adans. "Spurge"

- Tithymalus palmeri (Engelm.) Ateranis 71.2-4
 Pinyon and yellow pine belts. California to Arizona and Utah. Found under yellow pine on the South Rim.

- Tithymalus schizolobus (Engelm.) Norton "Snakeweed"
Euphorbia schizoloba Engelm. 71.2-7
 Plains and hillsides of Lower and Upper Sonoran Zones. California, Arizona and southern Nevada. Found on the Pasture Wash road, south rim of the Canyon.
- Tithymalus robustus (Engelm.) Small 71.2-10
 Nebraska, Montana, Arizona. Plains, canyons and mountain sides upward to the Transition Zone. Collected in the Kaibab Forest.

Chamaesyce S.F. Gray "Spurge" "Carpet weed"

- Chamaesyce chaetocalyx Boiss 71.3-5
 Western Texas to Arizona and southern Utah. Plains, hillsides and canyons of Lower and Upper Sonoran Zones. North Rim of Grand Canyon.
- Chamaesyce fendleri (Torr. & Gray) Small 71.3-6
 Plains and rocky canyons of the artemisia, pinyon and yellow pine belts. Texas to Arizona, Utah and Nevada. Occurs along the Clear Creek Trail in the Canyon.
- Chamaesyce versicolor (Greene) Norton 71.3-9
 Valleys and rocky canyons; Grand Canyon. Texas to Arizona. Found at Phantom Ranch in the Canyon.

Bernardia P. Br.

- Bernardia myricaefolia (Scheele) Benth. & Hook. 71.5-1
 Hillsides and rocky canyons; Grand Canyon. Western Texas to Arizona and Mexico. In Grand Canyon on both sides of the River.

Callitrichaceae "Water Starwort Family"

Callitriche L.

- Callitriche palustris L. 72.1-2
 Newfoundland to Florida, westward to Alaska and California. Also in the Old World. In water of Upper Sonoran to Alpine Zone. Found in pools on Kaibab Plateau.

Anacardiaceae "Sumac Family"

Rhus L. "Sumac"

- Rhus utahensis Goodding 74.2-1
 Rocky hillsides and canyons of the artemisia and pinyon belts. Southern Utah, Arizona and southeastern California. Found along Hermit Trail in Grand Canyon.
- Rhus trilobata Nutt. Torr. & Gray 74.2-2
Schmalzia trilobata (Nutt.) Small
 Saskatchewan, Missouri, Texas, California and Washington Upper Sonoran to Transition. In, and on both rims of the

Grand Canyon.

Rhus cismontana Greene 74.2-3

Found from South Dakota to Wyoming and southward to Missouri and Arizona. Ranges from Upper Sonoran to Transition Zone. Grows in Grand Canyon along Bright Angel Creek.

Celastraceae "Bittersweet Family"

Pachistima Raf.

Pachistima myrsinetes (Pursh) Raf. "Myrtle pachistima"
Upper Sonoran to Hudsonian Zone. British Columbia to California and New Mexico. Collected at Powell Saddle on the North Rim. /75.2-1

Forsellesia Greene "Spiny Bittersweet"

Forsellesia spinescens (A. Gray) Greene 75.3-2

Canyons and dry hillsides of artemisia and pinyon belts. Colorado to western Texas, California and Oregon. At Grand Canyon occurs on the Tonto and in the Upper Sonoran Zone.

Aceraceae "Maple Family"

Acer L. "Maple"

Acer grandidentatum Nutt., Torr. & Gray 76.1-1
"Bigtooth Maple"

Montana and Idaho, southward to western Texas and Arizona. Along water courses and in canyons of Upper Sonoran and Transition Zones. North of Colorado River in the Canyon.

Acer glabrum Torr. "Rocky Mountain Maple" 76.1-2

Canyons and mountain sides of the pinyon, yellow pine, aspen and spruce belts. Alberta and British Columbia, southward to New Mexico and California. Found on both rims along the slopes of the Kaibab limestone.

Acer interius Britton "Boxelder" 76.1-3

Along water courses of the artemisia and pinyon belts. Manitoba to Nebraska, Montana and Arizona. Found quite commonly along south tending slopes and along water courses of the Grand Canyon.

Rhamnaceae "Buckthorn"

Zizyphus Juss. "Lute Bush"

Zizyphus lycioides A. Gray 77.

Dry mesas, hills and along sandy water courses. Found from western Texas to New Mexico and Arizona. Found in the Shinumo and on the Great Thumb.

Rhamnus L. "Buckthorn"

- Rhamnus betulaeifolia Greene 77.1-1
Canyons of the artemisia and pinyon belts. Southeastern Utah, New Mexico and Arizona. Found at Roaring Springs in Grand Canyon.
- Rhamnus purshiana DC. "Cascara sagrada" 77.1
Eastern slopes Sierra Nevadas. Mountains of Colorado, Arizona, New Mexico and western Texas. In Grand Canyon collected only in Bright Angel Canyon.

Ceanothus L. "New Jersey Tea" "Mountain Laurel" "Snow brush"

- Ceanothus greggii A. Gray 77.2-3
Plains, canyons and slopes of Lower and Upper Sonoran Zones. Western Texas to southern Nevada, southward to Mexico. Found in Canyon on both sides of river.
- Ceanothus martini Jones 77.2-6
Mountain sides of Upper Sonoran, Transition and Canadian Zones. Found at the head of Roaring Springs Canyon on the north side of the river.
- Ceanothus fendleri A. Gray 77.2-7
From South Dakota to Wyoming, New Mexico and Arizona in Upper Sonoran, Transition and Canadian Zones. Occurs on both sides of the river in the Canyon.

Vitaceae "Grape Family"

Vitis L. Grape

- Vitis arizonica Engelm. "Canyon Grape" 78.1-1
Found from western Texas to southern Utah, southeastern California and Mexico. Near water courses, in gulches and canyons of Lower Sonoran up to Transition Zone. Found along Bright Angel Creek, in Cataract Canyon and in Nankoweap Basin.

Malvaceae "Mallow Family"

Malva L. "Mallow"

- Malva rotundifolia L. 79.1-1
Waste places throughout the United States. Introduced from the Old World. Collected on North Rim of Canyon.

Sphaeralcea St. Hil. "Globemallow"

- Sphaeralcea cuspidata (A. Gray) Britton 79.4-1
Plains and low hillsides of Lower and Upper Sonoran Zones; Fort Mojave. Kansas to southern Nevada, southward to Texas and Mexico. Found along the Dripping Springs Trail on the South Rim.

- Sphaeralcea ambigua A. Gray 79.4-3
Desert areas and rocky canyons of Lower and Upper Sonoran Zones, southern Utah and Arizona to Southern California. Collected on South Rim at Yavapai Point.
- Sphaeralcea marginata York 79.4-5
Found in Colorado, Utah, New Mexico and Arizona. In the Upper Sonoran and Transition Zones. Common on North Rim of the Grand Canyon.
- Sphaeralcea leptophylla (A. Gray) Rydb. 79.4-11
In southern Colorado, Utah, southward to western Texas and Arizona. Lower and Upper Sonoran Zones. North Rim of the Grand Canyon.
- Sphaeralcea fremontii Torr. 79.4-12
Grows in California and southwestern Nevada. On the North Rim of Grand Canyon in Upper Sonoran Zone.
- Phymosia Desv. "Wild Hollyhock" "Maple-leaved mallow"
Phymosia grandiflora Rydb. 79.4-14
Sphaeralcea grandiflora Rydb.
Northern New Mexico, Colorado and southeastern Utah. Mesas, along streams and canyons of Upper Sonoran, Transition and Canadian Zones. Found in South Canyon on the Kaibab Plateau.
- Sida L.
Sida hederacea (Dougl.) Torr. 79.6-1
Ranges from Washington to western Texas and Mexico. Grows in saline areas and dry plains of Lower and Upper Sonoran Zones. Found on the North Rim of Grand Canyon.
- Hypericaceae "St Johnswort Family"
Hypericum L. "St. Johnswort"
Hypericum anagalloides Cham. & Schlecht. 80.1-1
Idaho to British Columbia, Lower California. Wet meadows and canyons of Upper Sonoran, Transition and Canadian Zones. Found in Kaibab Forest along shores of ponds
- Tamaricaceae L. "Tamarix Family"
Tamarix L. "Tamarix"
Tamarix gallica L. "French Tamarix" 85.1-1
Introduced from Europe and planted extensively; escaped along Virgin River and down along the Colorado River. In Grand Canyon along the River from Nankoweap Creek to base of Tanner Trail.

Violaceae "Violet Family"

Viola L. "Violet"

- Viola nephrophylla Greene 85.1-1
Moist places in meadows, canyons and mountain parks, upward to spruce belt. Quebec to British Columbia, southward to New Mexico and California. Occurs on North Rim.
- Viola canadensis L. 85.1-13
Aspen and spruce belts. New Brunswick to British Columbia, southward to New Mexico and Arizona. Found on the North Rim.

Loasaceae "Loasa family"

Mentzelia L. "Blazing star"

- Mentzelia multiflora (Nutt.) A. Gray 86.2-4
Sandhills and canyons of Lower Sonoran up to Transition Zone. Colorado and Utah, southward to Texas and Mexico. Collected at Point Sublime on the North Rim.
- Mentzelia densa Greene 86.2-8
Canyons, hillsides and plateaus of Upper Sonoran and Transition Zones. Colorado, Utah and Arizona. Collected at Cedar Ridge at Grand Canyon.
- Mentzelia rusbyi Wootton 86.2-9
Wyoming, New Mexico, Arizona. Canyons and plateaus of Upper Sonoran and Transition Zones. Occurs on Kaibab Plateau.

Cactaceae "Cactus Family"

Echinocereus "Hedgehog cactus"

- Echinocereus coccineus Engelm. 87.1-1
Rocky slopes and canyons of Upper Sonoran Zone. Colorado, Utah, New Mexico and Arizona. At Grand Canyon found on North Rim but probably occurs also on South Rim
- Echinocereus engelmannii (Parry) Rumlper 87.1-2
Mesas and hills of central and western Arizona. Believed by Shreve to occur in the Grand Canyon.
- Echinocereus fendleri (Engelm.) Rumlper 87.1-3
Occurs well over the State. Believed by Shreve to occur in Grand Canyon.
- Echinocereus mojavnensis (Engelman and Bigelow) Rumlper
Vicinity of Colorado River along California /87.1-4 boundary. Believed by Shreve to occur in the Canyon region.

Ferocactus Britt. and Rose "Barrel cactus"

- Ferocactus lecontei Engelm. 87.4-2
Southern California along the Colorado, northern Lower

California, east into Utah and Arizona. Lower Sonoran Zone. Found on the Tonto in the Canyon.

Coryphantha Lem.

Coryphantha arizonica Engelm. 87.7-1
Arizona and southern Utah, Plains and hillsides of Lower Sonoran Zone. Occurs in the Canyon.

Opuntia Hill. "Prickly pear" "Cholla"

Opuntia whipplei Engelm. & Bigel. 87.9-2
The common cholla. Range limited to western New Mexico and Arizona. Collected on both rims.

Opuntia acanthocarpa Engelm. "Stag-horn Cholla" 87.9-3
Foothills or stony mesas of central and western Arizona. Believed by Shreve to occur in the Canyon region.

Opuntia echinocarpa Engelm. and Bigelow 87.9-4
Mesas; occurring from Florence to Kingman and Yuma, Arizona. Believed by Shreve to occur in the Canyon region.

Opuntia spinosior (Engelm.) Toumey 87.9
Mesas and foothills of central and southern Arizona; believed by Shreve to occur in the Grand Canyon.

Opuntia basilaris Engelm. & Bigelow "Beaver-tail Cactus" 87.9-8
Low hills in southwestern Arizona. Believed by Shreve to occur in the Grand Canyon.

Opuntia phaeacantha Engelm. 87.9
Common in most of desert foothills and mesas of central and southern Arizona; probably the most wide-spread species of this group.

Opuntia chlorotica Engelm. 87.9
Hills and on mountains as high as the oak belt throughout central and southern Arizona; common east of Safford and in northwestern Arizona south of Colorado River. Believed by Shreve to occur in the Grand Canyon

Opuntia fragilis (Nutt.) Haworth 87.9-11
Mountains, usually in shaded situations; oak and yellow pine belts of northeastern Arizona. Believed by Shreve to occur in the Canyon region.

Opuntia hystricina Engelm. & Bigelow 87.9-13
Rocky ledges and shallow soil in western Arizona. Collected in Nankoweap Basin, north of the River.

Opuntia polyacantha Haworth 87.9-15
Open desert plains and juniper forests in northern Arizona. Believed by Shreve to occur in the Canyon.

Mamillaria Haworth "Pincushion cactus" "Ball cactus"

Mamillaria radiosa arizonica 87
New Mexico to western Texas and Mexico. Found on North

Rim of Grand Canyon.

Elaeagnaceae "Oleaster Family"

Lepargyrea Raf. "Buffalo Berry"

Lepargyrea rotundifolia (Parry) Green "Lead bush" 88.1-2
Southern Utah and Arizona. Upper Sonoran Zone. Occurs
on rocky points on both rims of Canyon. Around Lipan
Point on South Rim and Cape Royal on the North Rim.

Onagraceae "Evening-primrose Family"

Chamaenerion Adans. "Fire weed"

Chamaenerion angustifolium (L.) Scop. "Blooming Sally" 90.3-2
Greenland to Alaska, North Carolina, New Mexico and Cal-
ifornia, Europe and Asia. Transition and Canadian
Zones. Kaibab Forest.

Epilobium L. "Willow weed"

Epilobium drummondii Hausskn. 90.4-9
Saskatchewan to British Columbia, southward to Colorado
and Nevada. In wet places of Transition and Canadian
Zones. Occurs on the Kaibab Plateau.

Epilobium alpinum L. 90.4-10

Meadows and willow groves of aspen, spruce and alpine
belts. Greenland to Alaska, southward to New Hampshire,
Colorado and California; also in Europe and Asia. Found
on the North Rim of the Canyon.

Epilobium fastigiatum (Nutt.) Piper 90.4-15

Wet places of aspen and spruce belts. British Columbia
to Utah and California. Found around Greenland Spring
on the North Rim.

Epilobium paniculatum Nutt. 90.4-20

Alberta to British Columbia, southward to Colorado,
Arizona and California. Upper Sonoran and Transition
Zones. Found on the Kaibab Plateau.

Oenothera L.

Oenothera longissima Rydb. 90.8-1

Sandy river banks and canyons; Grand Canyon. Utah and
Arizona. Found along the Cape Royal road on the North
Rim of the Canyon.

Oenothera hookeri Torr. & Gray 90.8-3

Montana to British Columbia, southward to Mexico. On
plains and in canyons and moist slopes of Upper Sonoran,
Transition and Canadian Zones. Found on North Rim
along roads.

Anogra Spach "White evening-primrose"

Anogra coronopifolia (Torr. & Gray) Britton 90.9-9

South Dakota to Kansas, Arizona and Utah. Upper Sonoran and Transition Zones. Plains, canyons and mountain sides. On Kaibab Plateau it grows in yellow pine belt.

- Pachylophus* Spach "Mountain primrose" "Rock rose"
Pachylophus marginatus (Nutt.) Rydb. 90.10-7
Oenothera marginata Nutt., Torr. & Gray
 Found from Colorado to Nevada, Idaho and Oregon. On plains and rocky mountain slope of Upper Sonoran, Transition and Canadian Zones. Collected at Pasture Wash on the South Rim of Grand Canyon.
- Galpinsia* Britton
Galpinsia lavandulaefolia (Torr. & Gray) Small 90.13-1
Oenothera lavandulaefolia Torr. & Gray "Evening primrose"
 Plains and foothills of Upper Sonoran Zone. Kansas and Texas, westward to Utah and Nevada. Collected at Rowe's Well and near the Village at Grand Canyon.
- Chylismia* Nutt.
Chylismia parviflora (S. Wats.) Rydb. 90.15-9
 Found in southern Utah, Arizona and Southern California. In desert areas and dry canyons of Lower Sonoran Zone. Occurs in the Canyon north of the river.
- Gayophytum* A. Jess. "Baby's breath"
Gayophytum intermedium Rydb. 90.16-4
 Moist ground in canyons and on slopes, upward to 8400 feet. Montana to New Mexico, westward to Washington and California. Found at Greenland Spring on North Rim.
Gayophytum ramosissimum Torr. & Gray 90.16-5
 Montana to New Mexico and California. Plains among sagebrush. Canyons and mountain sides upward to Transition Zone. North Rim of the Canyon in meadows.
Gayophytum nuttallii Torr. & Gray 90.16-6
 South Dakota to Colorado and Arizona, westward to Washington and California. Plains and hillsides. At Grand Canyon it occurs on the North Rim.
Gayophytum racemosum Torr. & Gray 90.16-7
 Ranges from South Dakota to Idaho westward to Washington and California. Canyons and mountain sides up to the Transition Zone. Found on the North Rim.
- Gaura* L. "Gaura"
Gaura coccinea Pursh 90.17-2
 Plains and foothills of the Lower and Upper Sonoran

Zones. Montana to Texas, Arizona and Nevada. Found at Pasture Wash, South Rim of the Canyon.

Apiaceae "Carrot Family"

Carum L.

Carum gairdneri (Hook. & Arn.) Gray "Yampa" 92.12-2
Mountain sides and canyons of the artemisia, pinyon and yellow pine belts; Montana to Utah, westward to British Columbia and California. Found on North Rim of Canyon.

Ligusticum L.

Ligusticum porteri Coulter and Rose 92.18-2
Aspen, spruce and subalpine belts. Wyoming to New Mexico and Arizona; Utah. Occurs at Greenland Spring on North Rim.

Oreoxis Raf.

Oreoxis macedougali (Coulter & Rose) Rydb. 92.19-3
Canyons of artemisia, pinyon and yellow pine belts. Southern Utah and Arizona. Occurs along Kaibab Trail south of the River.

Conioselinum Fisch.

Conioselinum scopulorum (Gray) Coulter & Rose 90.20-1
Pinyon belt upward to subalpine belt. New Mexico and Arizona, northward to Colorado, Utah and Oregon. Occurs on the North Rim of Grand Canyon.

Phellopterus Nutt.

Phellopterus utahensis (Jones) W. & S. 92.22-1
Idaho and Nevada to New Mexico. Plains and hillsides of Lower and Upper Sonoran Zones. Occurs on Kaibab Plateau.

Pteryxia Nutt.

Pteryxia petraea (Jones) Coulter & Rose 92.23-1
Foothills and mountain sides of artemisia, pinyon and yellow pine belts. Nevada and southeastern California to Idaho. Found on South Rim of Grand Canyon.

Pseudocymopterus Coult. "Wild carrot"

Pseudocymopterus montanus (Gray) Coulter & Rose 92.27-2
Spruce and subalpine belts, Wyoming to Arizona and New Mexico. Found on the North Rim of the Canyon.

Pseudocymopterus tidestromii Coult. & Rose 92.27-3
Utah and northern Arizona. Canadian and Alpine Zones. Kaibab Plateau.

- Cogswellia Raf.
Cogswellia macedougali (Coul. & Rose) Jones 92.30-10
 Utah, Nevada and northern Arizona. Plains and mountain
 sides of Upper Sonoran, Transition and Canadian Zones.
 North Rim of Grand Canyon.
- Cornaceae "Dogwood Family"
 Garrya A. Gray "Silk-tassel bush"
Garrya flavescens S. Wats. 93.1-1
 Southern Utah, Nevada, Arizona and southeastern California.
 Hillsides and canyons of Lower and Upper Sonoran
 Zones. At Grand Canyon it occurs in abundance along the
 Kaibab Trail from the North Rim to Roaring Springs.
 Occasionally found on the Kaibab Plateau.
- Cornus L. "Dogwood"
Cornus stolonifera Michx. 93.2-2
 Along brooks in Transition and Canadian Zones. Alaska
 to Montana, southward to Nevada, Arizona and Nebraska.
 At Grand Canyon found on the North Rim at Neal and
 Bright Angel Springs.
- Pyrolaceae "Shinleaf family"
 Pyrola L. "Shinleaf"
Pyrola secunda L. 94.3-1
 Labrador to Alaska, southward to Virginia and California
 Europe and Asia. Canadian and Alpine Zones. Damp
 places in forests. Kaibab Plateau.
Pyrola picta Smith 94.3-3
 Aspen and spruce belts. Wyoming to New Mexico, westward
 to British Columbia and California. Found on the North
 Rim of the Canyon.
Pyrola chlorantha Swartz 94.3-5
 Labrador to Virginia, British Columbia, California.
 Canadian and Alpine Zones. Also in Europe. Found on
 the Kaibab Plateau.
- Monotropaceae "Indianpipe Family"
 Pterospora Nutt. "Pinedrops"
Pterospora andromedea Nutt. 95.3-1
 Yellow pine, aspen and spruce belts. Quebec to Pennsyl-
 vania, New Mexico and California. Found on North Rim in
 yellow pine humus.
- Ericaceae "Heath Family"
 Arctostaphylos Adans. "Manzanita"

- Arctostaphylos pungens H.B.K. 96.6-3
Utah to California, Mexico. Upper Sonoran, Transition
Zones. Both rims but rare on the South.
- Arctostaphylos platyphylla (A.Gray) Kuntze 96.6-4
Colorado to California. Forming dense colonies in Upper
Sonoran Zone and more in Transition Zone. Rarely found
on the North Rim.

Primulaceae "Primrose Family"

Primula L.

- Primula specuicola Rydb. 98.1-3
Canyons under overhanging cliffs. Southeastern Utah.
Found on the North Rim of Grand Canyon.

Androsace L.

- Androsace diffusa Small 98.2-4
Mackenzie to British Columbia, southward to New Mexico
and Arizona. In Transition and Canadian Zones. Found
on Kaibab Plateau in abundance, particularly in sink
holes and parks.
- Androsace puberulenta Rydb. 98.2-5
Same occurrence as above.
- Androsace glandulosa Woot. and Stand. 98.2
Mountains of southwestern New Mexico and southeastern
Arizona. Occurs at Cliff Springs on North Rim of Canyon
- Androsace pinetorum Greene 98.2
From New Mexico far northward and westward. Occurs on
the North Rim of Grand Canyon.

Oleaceae "Olive Family"

Fraxinus L. "Ash"

- Fraxinus anomala Torr. "Single-leaf Ash" 100.1-1
Ranges from southwestern Colorado and northwestern New
Mexico westward to Nevada and Arizona. Grows in canyons
and on rocky hillsides of Lower Sonoran, Upper Sonoran
and Transition Zones. Found on any of the Canyon trails.
- Fraxinus macropetala Eastw. 100.1-2
Rocky slopes, upward to 6300 feet. Northwestern Arizona
Found on both sides of River at level of Supai Formation.

Mendora H.B.K.

- Mendora scabra A. Gray 100.3-3
Plains and hillsides of the Lower and Upper Sonoran
Zones. Western Texas to southern Utah, southward to
Mexico. Collected at Pasture Wash on the South Rim.

Gentianaceae "Gentian Family"

Centaurium Hill. "Centaurium"

- Centaurium exaltatum (Griseb.) W.F.Wright 102.1-2
Wet meadows and along creeks of the Upper Sonoran Zone.
Washington to California and Utah. Found at the mouth
of Garden Creek in the Canyon.

Amarella Gilib. "Gentian"

- Amarella heterosepala (Engelm.) Greene 102.
Utah and Colorado to New Mexico. Damp places in the
meadows of the Kaibab.

Dasystephana Adans. "Closed gentian"

- Dasystephana affinis (Griseb.) Rydb. (?) 102.
British Columbia, Colorado(?), California, Saskatchewan.
Canadian Zone. In meadows of the Kaibab Plateau. One
of the last flowers to bloom in the fall.

Frasera Walt. "Deers ears"

- Frasera albomarginata S. Wats. 102.3-1
Southern Utah, Nevada and Arizona. Mesas and pine
forests. Kaibab Forest.
- Frasera utahensis Jones 102.3-3
Mesas and dry hillsides. Southern Utah and Arizona.
Found on the Tonto and in Upper Bass Canyon.
- Frasera scabra Greene "American columbo" 102.3
Colorado, Arizona, New Mexico. Transition Zone.
Kaibab Forest.

Apocynaceae "Dogbane Family"

Amsonia Walt

- Amsonia brevifolia A. Gray 104.1-3
Plains and hillsides of the Covillea and Artemisia belts
New Mexico and southern Utah, westward to Southern Cali-
fornia. Found on the South Rim of the Canyon
- Amsonia eastwoodiana Rydb. 104.1-4
Plains and foothills of the Covillea and artemisia belts
Central Utah and Arizona. Found along the Hermit Trail
south of the River.

Apocynum L.

- Apocynum cannabinum L. 104.2-2
Plains and hillsides of Covillea and artemisia belts.
Anticosti to Florida, westward to British Columbia and
California. Found at Indian Gardens in Grand Canyon

Asclepiadaceae "Milkweed Family"

Funastrum Fourn.

- Funastrum heterophyllum (Engelm.) Standl. 105.2-2
Mesas and low hills of the Covillea belt. Southern California to Utah, Texas and Mexico. Found on the Tonto and in sage flats of the Grand Canyon.

Asclepias L. "Milkweed"

- Asclepias tuberosa L. 105.5-1
Artemisia, pinyon and yellow pine belts. Ontario to Florida, westward to Utah and Arizona. Found on North Rim of Grand Canyon.

Asclepiodora A. Gray

- Asclepiodora decumbens (Nutt.) A. Gray 105.6-1
Kansas to Texas, westward to Nevada and Mexico. Plains, desert areas and mountain sides of Lower and Upper Sonoran and Transition Zones. On the Kaibab Plateau.

Polemoniaceae "Phlox Family"

Phlox L.

- Phlox depressa (E.Nels.) Rydb. 108.1
In moist places, Colorado, Wyoming and Idaho. Found on the North Rim of the Canyon.
- Phlox stansburyi (Torr.) Heller 108.1-3
Foothills and canyons of artemisia belt, upward to spruce belt. Colorado to New Mexico, westward to California. Found on Hermit Trail south of river in Canyon.
- Phlox caespitosa Nutt. 108.1-7
Montana to northern New Mexico, westward to Oregon and Washington. Canadian and Alpine Zones. A conspicuous plant in the Kaibab parks in the early part of June.

Collomia Nutt.

- Collomia grandiflora Dougl. 108.2-1
Plains, canyons and on mountain sides of Upper Sonoran to Canadian Zone. Montana to Utah, westward to British Columbia and California. Found at Cape Royal on North Rim and at Trash Tank on the South Rim.
- Collomia linearis Nutt. 108.2-2
Minnesota, Nebraska, British Columbia and California. Moist places in Upper Sonoran, Transition and Canadian Zones. At Greenland Spring on the North Rim.

Gilia Ruiz and Pav.

- Gilia arizonica (Greene) Rydb. 108.8-14

- Small red *Gilia*. Southern Utah and Arizona to southern Nevada. Upper Sonoran to Canadian Zone. On dry ridges and canyons. Both rims of the Canyon.
- Gilia aggregata* (Pursh) Spreng. 108.8-15
Large, red, spotted *Gilia*. Ranges from Montana to Colorado, westward to Washington and Nevada. Transition and Canadian Zones. Occurs on both rims of Grand Canyon.
- Gilia pulchella* Dougl. 108.8-16
Transition and Canadian Zones, Montana to Colorado, westward to Washington and Nevada. Collected at Cape Royal and Powell Saddle on the North Rim.
- Gilia longiflora* (Gray) Don. 108.8-17
Large, pink *Gilia*. Nebraska to Texas, westward to Washington and Nevada. Collected at Bright Angel Point on the North Rim.

Hydrophyllaceae "Water leaf Family"

Nemophila Nutt.

- Nemophila breviflora* A. Gray 109.2-2
Pinyon, yellow pine and aspen belts. Utah to Montana and Washington. On the South Rim of Grand Canyon.

Phacelia Juss. "Wild heliotrope"

- Phacelia corrugata* A. Nels. 109.4-3
In dry soil from Colorado and Utah to western Texas and New Mexico. Found on the North Rim of Grand Canyon.
- Phacelia heterophylla* Pursh 109.4-14
Alberta to British Columbia, southward to New Mexico and California. From Upper Sonoran to Canadian Zone. Found at Greenland Spring on the North Rim.
- Phacelia rotundifolia* Torr., S. Wats. 109.4-26
Crevasses of rocks in desert areas; in *Covillea* and *artemisia* belts. South Rim of Grand Canyon.
- Phacelia glechmaefolia* A. Gray 109.4-28
Canyons and dry hillsides; Grand Canyon. Arizona and southern Utah. Found in Toroweap Valley in Grand Canyon National Monument; as well as along Kaibab Trail in Grand Canyon.
- Phacelia micrantha* Torr. 109.4
Colorado and Mohave Deserts; east to Utah and western Texas, south to Lower California and Sonora. Found at Roaring Springs in the Grand Canyon.

Boraginaceae "Borage Family"

Coldenia L.

- Coldenia hispidissima (Torr.) A. Gray 110.1-1
Western Texas to Nevada and Arizona. Lower and Upper
Sonoran Zones. North Rim of Grand Canyon.

Euploca Nutt.

- Euploca convolvulaceae Nutt. 110.3-1
Nebraska to southern Utah and California south to Mexico
In Lower and Upper Sonoran Zones. North Rim of Canyon.

Lappula Moench "Stickseed"

- Lappula floribunda (Lehm.) Greene. 110.6-2
Manitoba to New Mexico, westward to British Columbia and
California. Foothills and mountain sides of Upper Sono-
ran to Canadian Zone. North Rim of Grand Canyon.
- Lappula occidentalis (S.Wats.) Greene 110.6-6
Saskatchewan to New Mexico, California and Alaska.
Plains and mountain sides of Upper Sonoran Zone. In
Thompson Canyon on North Rim.

Oreocarya Greene

- Oreocarya setosissima (A. Gray) Greene 110.13-1
Yellow pine, aspen and spruce belts. Southern Utah and
Arizona. Found at Cape Royal on the North Rim.
- Oreocarya flava Nels. 110.13
Found in the southern desert region of Wyoming and ex-
tending southward to Arizona. Found in Toroweap Valley
in Grand Canyon National Monument.
- Oreocarya ceaspitosa Nutt. 110.13
Wyoming southward. Along Hermit Trail south of the
River in the Canyon.
- Oreocarya depressa (Jones) MacBr. 110.13-9
Pinyon belt. Southern Utah and Nevada. Found as above.
- Oreocarya fulvocanescens (A.Gray) Greene 110.13
On hills from Wyoming to New Mexico. Found as above.
- Oreocarya cinerea (?) Greene 110.13-16
Yellow pine belt; Kaibab Plateau. Western Texas to Col-
orado and Arizona. Also occurs in Canyon and on South
Rim.
- Oreocarya confertiflora Greene 110.13-25
Pinyon and yellow pine belts. Western Colorado to south-
eastern California and Arizona. Found in the Canyon at
Roaring Springs.

- Amsinckia* Lehm.
Amsinckia menziesii (Lehm.) Nels. & MacBr. 110.15-2
 Artemisia and pinyon belts. British Columbia to California, eastward to Arizona. Found on South Rim of Canyon
- Myosotis* L. "Forget-me-not"
Myosotis virginica 110.19
- Mertensia* Roth. "Bluebells"
Mertensia toyabensis subnuda MacBr. 110.20-4a
 Yellow pine and aspen belts, Utah. Found at Greenland Spring on the North Rim of Grand Canyon.
Mertensia coronata A. Nels. 110.20
 Western Wyoming to Idaho and Montana. Found near Neal Spring on the North Rim of Grand Canyon.
Mertensia cynoglossoides Greene 110.20
 Found from Western Colorado south to Mexico. On the North Rim of Grand Canyon.
Mertensia pratensis Heller 110.20-5
 Transition and Canadian Zones. Western Colorado and Utah to New Mexico and Arizona. In damp canyons of the Kaibab Plateau. Collected in Thompson Canyon.
- Lithospermum* L. "Gromwell" "Puccoon" "Indian Paint"
Lithospermum linearifolium Goldie 110.21-3
 Plains, dry canyons and mountain sides of Upper Sonoran and Transition Zones. Manitoba to British Columbia, southward to Texas and Arizona. Collected on the South Rim near the old Flagstaff-Grand View Road.
Lithospermum breviflorum Engelm. & Gray 110.21-4
 Arkansas, Texas, New Mexico and Colorado. Lower and Upper Sonoran Zones. North Rim of Grand Canyon.
Lithospermum multiflorum Torr. 110.21-5
 Wyoming, New Mexico, Arizona, Utah and Mexico. Transition and Canadian Zone. Both rims of Grand Canyon.
- Verbenaceae "Verbena Family"
Verbena L. "Verbena"
Verbena macdougalii Heller 111.1-2
 Colorado, Utah to New Mexico and Arizona. Canyons and grassy flats of Upper Sonoran and Transition Zones. North Rim of Grand Canyon.
- Lippia* L.
Lippia wrightii A. Gray 111.2-1
 Mesas, rocky canyons and hillsides of the Covillea and

Lower artemisia belts. Western Texas to southern Nevada southward to Mexico. Found on the Tonto along the Clear Creek Trail in Grand Canyon.

Solanaceae "Potato Family"

Lycium L.

- Lycium pallidum* Miers 112.1-1
Plains, hillsides and canyons of Covillea, artemisia and pinyon belts. Colorado and Utah southward to Mexico. Found on the Tonto in Grand Canyon.
- Lycium andersonii* A. Gray "Water Jacket" 112.1-3
Dry stony hills, Mohave desert; southern Nevada and Arizona. Found along Hermit Trail south of river in Canyon
- Lycium torreyi* Gray 112.1-4
Desert areas and dry hillsides of Covillea belt. Western Texas to southern Utah, Nevada and California. Found in Toroweap Valley in Grand Canyon National Monument.

Physalis L. "Ground cherry"

- Physalis hederæfolia* A. Gray 112.5-4
Plains and foothills of the Covillea and artemisia belts Colorado to Texas, southern Utah, California and Mexico. Collected at Cliff Springs on the North Rim.
- Physalis crassifolia* Benth. 112.5-6a
Washes or canyon beds, rather common in the desert ranges, Death Valley; east to Mohave Desert; Colorado Desert; south to Mexico. Collected at Point Sublime on the North Rim of Grand Canyon.

Solanum L. "Nightshade"

- Solanum triflorum* Nutt. 112.6-1
Damp waste places, Ontario to British Columbia, Kansas, New Mexico and Nevada. Upper Sonoran Zone. Plains and canyons. North Rim around Jacob's Lake.
- Solanum elaeagnifolium* Cav. 112.6-7
Plains and dry hillsides of Covillea and artemisia belts Missouri to Texas, westward to California and Mexico. Occurs along Bright Angel Trail in the Canyon,

Datura L.

- Datura metaloides* DC. "Sacred Datura" 112.8-1
Along streams and in moist places of the Covillea and artemisia belts. Colorado to western Texas, westward to California and Mexico. Found along the Kaibab Trail north of the River and Bright Angel Trail south.

Nicotiana L. "Tobacco"

- Nicotiana attenuata Torr. 112.9-1
Texas to Utah and California. Valleys and foothills of
Upper Sonoran and lower Transition Zones. Occurs on
both rims of Grand Canyon.

Menthaceae "Mint Family"

Salazaria Torr.

- Salazaria mexicana Torr. 113.3-1
Desert areas, rocky ravines and hillsides of Covillea
belt. Southern Nevada and California, southward to
Mexico. Found in lower end of Toroweap Valley at Grand
Canyon National Monument.

Scutellaria L. "Skull cap"

- Scutellaria antirrhinoides Benth. 113.4-2
Idaho and Oregon to Nevada and California. Plains and
dry hillsides of Upper Sonoran and Transition Zones.
Found on the Kaibab Plateau.

Marrubium L. "Hoarhound"

- Marrubium vulgare L. 113.5-1
Maine to North Carolina, west to British Columbia and
California. Waste places and on sheep ranges. Kaibab
Plateau.

Agastache Clayt. "Giant hyssop"

- Agastache urticifolia (Bent.) Kuntze 113.6-2
Montana to Colorado, British Columbia and California.
Transition and Canadian Zones. Kaibab Forest.

Moldavica Adans.

- Moldavica parviflora (Nutt.) Britt. "Dragonhead" 113.8-1
Plains and slopes of the artemisia belt, upward to the
spruce belt. New York to Alaska, southward to New Mex-
ico and Arizona. Found in damp meadows of the North
Rim of Grand Canyon.

Prunella L. "Selfheal"

- Prunella vulgaris L. 113.9-1
Throughout temperate North America, Asia and Europe.
Waste places, canyons and on mountain sides upward to
Canadian Zone.

- Salvia L. "Sage"
Salvia carnosia Dougl. 113.14-5
Audibertia incana
 Washington to California, Utah and Arizona. Lower and Upper Sonoran Zones. Collected on Cedar Ridge on the South Rim of Grand Canyon.
Salvia microphylla var. wizlisenii 113.14
Salvia lemmoni Gray
 Found on the South Rim of Grand Canyon.
- Hedeoma Pers. "Penneyroyal"
Hedeoma nana (Torr.) Brig. 113.16-2
 Western Texas to Nevada and southward. Rocky places of Upper Sonoran and Transition Zones. Found on South Rim at Hull Tank and on north at Swamp Point.
Hedeoma lata 113.16
 Western Texas to New Mexico. Dry plains and low hills in Upper Sonoran Zone. North Rim of Grand Canyon.
- Madronella Greene "False Horse-mint" "Western Penneyroyal"
Madronella linoides (A. Gray) Greene 113.18-2
 Rocky canyons of Lower and Upper Sonoran belts. Southeastern California and Grand Canyon. Kaibab Plateau.
Madronella parvifolia (Greene) Rydb. 113.18-3
 Colorado, New Mexico, Utah and Arizona. Transition and Canadian Zones. Kaibab Forest.
- Mentha L. "Mint"
Mentha penardi (Briq.) Rydb. 113.20-3
 Wet places of the yellow pine and aspen belts. British Columbia to Nevada and California. At Grand Canyon found in such meadows as the Basin on the North Rim.
- Scrophulariaceae "Figwort Family"
 Antirrhinum L. "Vine Figwort"
Antirrhinum antirrhiniflorum (Willd.) Hitchc. 114.4
Maurandia antirrhiniflora Willd.
 Western Texas and southern Arizona to Mexico. Occurs in Grand Canyon in Lower and Upper Sonoran Zones.
- Penstemon Schmidel. "Wild Snapdragon" "Beard-tongue"
Penstemon bridgesii A. Gray 114.7-1
 Colorado and New Mexico, westward to Nevada and California. Upper Sonoran and Transition Zones. Reported from both sides of the Canyon just below the rims.

- Penstemon eatoni undosus Jones 114.7-15a
Utah and Arizona. Lower and Upper Sonoran Zones. Collected at Yavapai Point, South Rim of Grand Canyon.
- Penstemon torreyi Benth. 114.7-16
Colorado and eastern Utah, southward to Mexico. Upper Sonoran to Canadian Zones. Mostly a high mountain species. Found on both rims of the Canyon.
- Penstemon barbatus (Cav.) Roth 114.7-18
Colorado to Nevada. Grows on foothills and in dry canyons of Upper Sonoran and Transition Zones. Found on both rims of Grand Canyon.
- Penstemon palmeri A. Gray 114.7-40
Southern Utah and Arizona, westward to California. In Lower and Upper Sonoran Zones. Both rims of Canyon.
- Penstemon cyathophorus Rydb. 114.7-
Found in mountains of Colorado and Wyoming and on North Rim of Grand Canyon in Transition and Canadian Zones.
- Penstemon nitidus Dougl. 114.7
Found on Hermit Trail on south side of Grand Canyon.
- Penstemon pachyphyllus A. Gray 114.7-45
Colorado and Utah into northern Arizona. Found in Upper Sonoran and Transition Zones. In Grand Canyon only collected on the South Rim.
- Penstemon radicosus Nels. 114.7-51
In moist areas in desert places; south central Wyoming and adjacent Colorado and Utah. Found in wet meadows and around springs on the North Rim of Grand Canyon.
- Penstemon thompsoniae (A. Gray) Rydb. 114.7-59
Rocky canyons, upward to 7200 feet. Southern Utah and Arizona. Found in Slide Canyon, north side of Canyon.
- Penstemon linarioides A. Gray "Creeping Penstemon"
Western Texas to Utah and Arizona to / 114.7-62a
adjacent Mexico. Both rims of Grand Canyon.
- Penstemon virgatus A. Gray 114.7
Mountains of New Mexico and Arizona. Transition Zone. Collected on the North Rim of Grand Canyon.
- Penstemon stenophyllus Gray 114.7
Kaibab Forest.
- Mimulus L. "Monkey Flower"
- Mimulus cardinalis Dougl. 114.9-1
Oregon and California to western New Mexico and Mexico. In Valleys of Upper Sonoran Zone. Found on the North Rim and at Ribbon Falls in Grand Canyon.
- Mimulus guttatus DC. 114.9-4
Ranges from Saskatchewan to Alaska, southward to New

Mexico and California. Transition and Canadian Zones.
Found in damp areas on both rims and in Grand Canyon.

Mimulus primuloides Benth. 114.9-15

Ranges from Washington and Idaho southward to California and Nevada. Transition and Canadian Zones. In damp places, especially the shores of ponds. Found on the North Rim along Milk Creek.

Veronica L. "Speedwell" "Ironweed"

Veronica xalapensis H.B.K. 114.13

Saskatchewan to British Columbia southward to Texas and Mexico. Lower and Upper Sonoran and Transition Zones. Occurs in damp places on the Kaibab Plateau.

Veronica americana Schwein 114.13-1

Newfoundland to Alaska, Virginia, New Mexico and California. Wet places of Upper Sonoran up to Alpine Zones, Kaibab Forest. Collected at Big Springs and at Spring Lake.

Synthyris Benth.

Synthyris plantaginea Benth. 114.15-3

Transition and Canadian Zones. Wyoming to New Mexico and Arizona. At Grand Canyon collected near the old Flagstaff-Grand View Road.

Castilleja Mutis. "Paintbrush"

Castilleja linariaefolia Benth. 114.17-3

State flower of Wyoming. British Columbia to California eastward to Wyoming and New Mexico. Upper Sonoran to Canadian Zones. Found on the Kaibab Plateau.

Castilleja integra A. Gray 114.17-5

Colorado, New Mexico and Arizona, southward to Mexico. At Grand Canyon it is prominent on rocky hills and in open parks of Kaibab Plateau. Found also on South Rim.

Castilleja pinetorum Fernald 114.17-10

Yellow pine, aspen and spruce belts. Idaho and Oregon to Nevada and California. Found on North Rim under yellow pine.

Castilleja augustifolia (Nutt.) Don 114.17-18

Yellow pine, aspen and spruce belts. Alberta and British Columbia, southward to Colorado and California. Found in Slide Canyon north of the River and along the Kaibab Trail south.

- Adenostegia* Benth.
Adenostegia parviflora Ferris 114.18-3
 In Grand Canyon region only in the Transition Zone on the North Rim.
- Adenostegia wrightii* (A. Gray) Greene 114.18-5
 Southern Colorado and Utah southward to Texas and Mexico. In Upper Sonoran and Transition Zones on North Rim of Grand Canyon.
- Orthocarpus* Nutt. "Owl's Clover"
Orthocarpus luteus Nutt. "Yellow Owl's Clover" 114.19-4
 Ranges from Saskatchewan to British Columbia, southward to New Mexico and Arizona. Found on the North Rim in Transition and Canadian Zones. Occurs around Cape Royal.
- Orthocarpus purpureo-albus* A. Gray 114.19-6
 Colorado and New Mexico to Idaho and Arizona. Transition and Canadian Zones. North Rim of Grand Canyon
- Orobanchaceae "Broomrape Family"
Thalesia Raf. "Cancer-root"
Thalesia fasciculata (Nutt.) Britton 117.1-2
 Upper Sonoran to Canadian Zone. Saskatchewan to British Columbia, southward to Mexico. Occurs commonly on the South Rim of Grand Canyon in the spring. Found as a parasite growing on the roots of sagebrush.
- Plantaginaceae "Plantain Family"
Plantago L. "Plantain"
Plantago purshii Roem. & Schult. 119.1-5
 Plains and dry slopes of the Covillea, artemisia and pinyon belts. Ontario to Texas, westward to British Columbia and Arizona. Found on South Rim around Village
- Plantago scariosa* Morris 119.1-6
 Plains and slopes of Covillea belt. Southern Utah and Arizona to California. Found south of the River along Kaibab Trail.
- Rubiaceae "Madder Family"
Galium L. "Bedstraw"
Galium bradegi A. Gray 120.3-5
 Wyoming to New Mexico and California. Moist places in Upper Sonoran Zone, upward to the Canadian Zone. Found on Kaibab Plateau along the margins of ponds.
- Galium mathewsii* A. Gray 120.3-10
 Utah and Arizona westward to California. In crevices of rocks and on hillsides of Lower and Upper Sonoran Zones. North Rim of Grand Canyon.

- Galium triflorum Michx. 120.3-12
Newfoundland to Alaska southward to Alabama, Colorado and California. Moist places in Upper Sonoran and Transition Zones. Found at South Canyon on Kaibab Plateau as well as at Roaring Springs in the Grand Canyon.
- Galium watsoni (A. Gray) Heller 120.3-14
Rocky places in pinyon and yellow pine belts. Idaho to Arizona. Occurs in Canyon along Bright Angel Trail.
- Galium fendleri A. Gray 120.3
Found in the damp woods of the Transition Zone. Occurs on the Kaibab Plateau.

Caprifoliaceae "Honeysuckle Family"

Sambucus L. "Elder"

- Sambucus caerulea Raf. 121.1-1
Alberta to British Columbia southward to Arizona and California. Moist slopes and canyons of Transition and Canadian Zones. Found on both rims of Grand Canyon.
- Sambucus melanocarpa A. Gray 121.1-3
Montana to New Mexico, westward to Nevada and Arizona. Moist places in the Transition, Canadian and Alpine Zones. Found on the North Rim of Grand Canyon.
- Sambucus microbotrys Rydb. 121.1-4
Wyoming to New Mexico, westward to Nevada and Arizona. Canyons, plateaus and slopes of Transition and Canadian Zones. Occurs on the North Rim of Grand Canyon.
- Sambucus neomexicana Wooton 121.1
Mountains of southern Colorado and New Mexico. Found along road to Cape Royal on North Rim of Grand Canyon.

Symphoricarpos Ludw. "Snowberry"

- Symphoricarpos albus pauciflorus (Robbins) Blake 121.2-1a
Vermont to Pennsylvania, westward to Nebraska, New Mexico and British Columbia. Upper Sonoran and Transition Zones. North Rim of Grand Canyon.
- Symphoricarpos rotundifolius A. Gray "Ocean Spray" 121.2-3
Wyoming to western Texas, westward to Oregon and California. Foothills and canyons upward to Canadian Zone. North Rim of Grand Canyon.
- Symphoricarpos utahensis Rydb. 121.2-4
Mountain sides of yellow pine and aspen belts. Wyoming and Colorado to Utah and Idaho. Found along Hermit Trail south of the River.

- Symphoricarpos vaccinioides Rydb. 121.2-5
Mountain sides of yellow pine and aspen belts. Montana to Colorado, westward to Washington and Nevada. Found under Grand View Point on South Rim of Grand Canyon.
- Symphoricarpos oreophilus A. Gray 121.2-6
Mountain sides and canyons upward to Canadian Zone. Colorado and New Mexico, westward to Idaho and California. Collected in Thompson Canyon on the North Rim of Grand Canyon.
- Symphoricarpos longiflorus A. Gray 121.2-7
Utah and Arizona, westward to Nevada and southeastern California. Mountain sides and canyons upward to Canadian Zone. South Rim of Grand Canyon.
- Linnaea Gronov. "Twin flower"
Linnaea borealis americana (Forbes) Rehder 121.3-1
Newfoundland to Alaska, Maryland, Colorado, Oregon. Kaibab Forest. Canadian Zone. Damp canyons on north facing slopes.
- Campanulaceae "Bell flower Family"
Campanula L. "Hairbell" "Bell flower" "Bluebell"
Campanula parryi A. Gray 126.2-2
Wyoming and Utah to New Mexico and Arizona. Canadian and Alpine Zones. Found in almost any of the North Rim meadows.
- Lobeliaceae "Lobelia Family"
Lobelia L. "Lobelia"
Lobelia splendens Willd. 127.2-1
Wet ground of Upper Sonoran Zone, Texas to California and Mexico. Found along the creeks in Grand Canyon.
- Asteraceae "Aster Family"
Eupatorium L. "Thoroughwort"
Eupatorium herbaceum (A. Gray) Greene 128.2-3
New Mexico westward to Utah. Canyons and mountain sides up to Canadian Zone. Kaibab Forest.
- Coleosanthus Cass.
Coleosanthus longifolius (S.Wats.) Kuntze 128.3-1
Desert areas and dry canyons of Lower and Upper Sonoran Zones. Utah to Arizona and to eastern California. Phantom Ranch in Grand Canyon.
Coleosanthus californicus (Torr. & Gray) Kuntze 128.3-3
Plains and foothills of artemisia belts. Colorado to

- California and Mexico. Found along Kaibab Trail in Bright Angel Canyon.
- Coleosanthus oblongifolius linifolius (D.C.Eaton) Blake
Canyons, hillsides and rocky places of the /128.3-9a
artemisia, pinyon and yellow pine belts. Colorado to
Arizona and California. Occurs along Bright Angel Creek
in Grand Canyon
- Coleosanthus grandiflorus (Hook.) Kuntze 128.3-10
Missouri to Washington and California. Canyons and
mountains up to Transition Zone. Kaibab Forest.
- Coleosanthus atractyloides (A.Gray) Kuntze 128.3-11
Desert areas and rocky canyons of Lower and Upper Sono-
ran Zones. Utah, Nevada and Arizona. Found at Phantom
Ranch in Grand Canyon.
- Gutierrezia Lag. "Snake weed"
- Gutierrezia sarothrae (Pursh) Britt.& Rusby 128.7-1
Saskatchewan to Kansas, Utah and California. Upper
Sonoran, canyons of Transition. North and South Rim.
- Gutierrezia microcephala DC. 128.7-2
Plains foothills and canyons of artemisia, pinyon, yel-
low pine and aspen belts. Idaho to New Mexico and
Arizona. Found along Clear Creek Trail in the Canyon.
- Gutierrezia lucida Greene 128.7-4
Plains, slopes and rocky canyons of Covillea and arte-
misia belts. Texas to Colorado, Nevada, Southern Cali-
fornia and northern Mexico. Found on South Rim of Canyon
- Chrysopsis Ell. "Golden Aster"
- Chrysopsis villosa (Pursh) Nutt. 128.9-3
Minnesota to Saskatchewan, southward to Texas and New
Mexico. Upper Sonoran to Canadian Zone. Both Rims of
Grand Canyon
- Chrysopsis hispida (Hook.) Nutt. 128.9
Widely distributed in intermountain region. Found around
South Big Spring and Powell Saddle on the North Rim.
- Solidago L. "Goldenrod"
- Solidago ciliosa Greene 128.10-1
Alberta and British Columbia southward to Colorado, Utah
and Arizona. Mountain parks and open slopes of Canadian
Zone. Grows in abundance in parks of the Kaibab Forest.
- Solidago sparsiflora A. Gray 128.10-6
Plains and dry hillsides of Upper Sonoran and Transition
Zones. Southern Utah and Arizona. In Grand Canyon it
occurs at Powell Saddle.

- Solidago trinervata Greene 128.10-7
South Dakota to New Mexico, Utah and Wyoming. Dry slopes of Transition and Canadian Zones. North and South Rims of Grand Canyon.
- Solidago arizonica (Gray) Woot. & Standl. 128.10
Occurs in the Upper Sonoran and Transition Zones. Found on the North Rim of Grand Canyon.
- Solidago altissima L. 128.10-9
Wyoming to Utah and eastward. Upper Sonoran Zone. North Rim of Grand Canyon.
- Solidago petradoria Blake 128.10-14
Petradoria pumila Greene
Wyoming to Texas, Arizona and Nevada. Upper Sonoran and Transition Zones. Both rims of Grand Canyon.
- Solidago parryi (A. Gray) Greene 128.10-15
Oreochrysum parryi Rydb.
Wyoming to New Mexico. Transition, Canadian and Alpine Zones. Kaibab Plateau.
- Petradoria Greene (Type of Solidago)
Petradoria graminifolia (Torr. & Gray) Blake 128.10a
Plains and low hills in the Upper Sonoran Zone. Found on the North Rim of Grand Canyon.
- Aplopappus Cass.
Aplopappus nuttallii Torr. & Gray 128.11-1
Artemisia, pinyon and yellow pine belts. Nebraska to Alberta, New Mexico and Arizona. Found on North Rim of Grand Canyon.
- Aplopappus spinulosus goodingii (A. Nels.) Blake 128.11-3
Covillea belt. Nevada. Found in the lower end of Toroweap Valley, Grand Canyon National Monument.
- Aplopappus heterophyllus (A. Gray) Blake 128.11-31
Colorado to Mexico. Lower and Upper Sonoran Zones.
- Haplopappus Cass. (much like above)
Haplopappus drummondii (Torr. & Gray) Blake 128.11a
Found on the North Rim of Grand Canyon.
- Chrysothamnus Nutt. "Rabbit brush"
Chrysothamnus nauseosus graveolens Hall & Clements
Chrysothamnus graveolens /128.12-12a
Nebraska to Montana, Utah and New Mexico. Found on both rims in the Upper Sonoran and Transition Zones.

- Chrysothamnus mohavensis Greene 128.12-17
Southern California to southern Utah and Arizona. Desert areas and dry hillsides of the Lower Sonoran Zone. Occurs in Grand Canyon.
- Chrysothamnus depressus Nutt. 128.12-20
Colorado, Utah and New Mexico. Plains and mountain sides of Upper Sonoran and Transition Zones. Both rims of Grand Canyon.
- Chrysothamnus stenophyllus (A.Gray) Greene 128.12-28
Montana to Wyoming, Nevada and Arizona. Dry ridges and stony slopes. Upper Sonoran and Transition Zones. Both rims of Grand Canyon.

Townsendia Hook.

- Townsendia exscapa (Richards.) Porter 128.14-1
Plains and upward to spruce belt. Saskatchewan to Arizona and Texas. Collected at Village on South Rim.
- Townsendia intermedia Rydb. 128.14-2
Plains. Nebraska to Wyoming, south to Arizona. Found on the South Rim.

Aster L. "Aster"

- Aster multiflorus Ait. 128.15-12a
Found up and down Rockies and east to New England. Found on the North Rim in meadows.
- Aster hirtifolius Blake 128.15-27
Lower Sonoran, Upper Sonoran and Transition Zones. Wyoming to Texas, Arizona and Nevada. Collected on the South Rim of Grand Canyon.
- Aster leucelene Blake 128.15-28
Kansas to Texas and Mexico, west to Colorado and Utah. Lower and Upper Sonoran Zones. North Rim of Grand Canyon.
- Aster abatus Blake 128.15-31
Covillea belt. California, Utah and Nevada. Found on south side of Grand Canyon along Hermit and Kaibab Trails.
- Aster tanacetifolius H.B.K. 128.15-37
South Dakota to Alberta, Nevada and Mexico. Lower and Upper Sonoran and Transition Zones. North Rim of Grand Canyon.
- Aster cichoriaceus (Greene) Blake 128.15-40
Upper Sonoran and Transition Zones. Colorado, New Mexico, Utah and Arizona. Collected at Point Imperial on the North Rim of Grand Canyon.
- Aster bigelovii Gray 128.15-41
Yellow pine belt Colorado and New Mexico to California. Found under yellow pine on North Rim of Grand Canyon.

- Aster canescens Pursh 128.15-43
Saskatchewan to British Columbia, California and Colorado, Upper Sonoran and Transition Zones. North Rim of Grand Canyon.
- Aster apricus (Gray) Rydb. 128.15
Montana, Colorado, Oregon, British Columbia, Canadian and Alpine Zones. Kaibab Plateau.
- Erigeron L. "Flea bane"
- Erigeron flagellaris Gray 128.16-5
Yellow pine, aspen, spruce and subalpine belts. South Dakota to Wyoming, New Mexico and Texas. Found extensively in meadows and open hillsides of North Rim of Grand Canyon.
- Erigeron divergens Torr. & Gray 128.16-8
Montana to British Columbia, California and Texas. Low plains and river banks. Lower Sonoran and Transition Zones. North Rim of Grand Canyon.
- Erigeron subtrinervis Rydb. 128.16-13
Yellow pine, aspen and spruce belts. South Dakota to Washington, Utah and New Mexico. Found in the meadows and on hillsides of the North Rim.
- Erigeron macranthus Nutt. 128.16-17
Alberta to British Columbia south to New Mexico and Arizona. Transition and Canadian Zones. North Rim of Grand Canyon.
- Erigeron asperugineus (D.C. Eaton) A. Gray 128.16-27
Montana to Wyoming, Nevada and Arizona. Transition and Canadian Zones of the North Rim of Grand Canyon.
- Erigeron concinnus (H. & A.) Torr. & Gray 128.16-31
Artemisia, pinyon and yellow pine belts. Montana to British Columbia southward to New Mexico and California. In meadows on North Rim of Grand Canyon.
- Erigeron utahensis A. Gray 128.16-36
Artemisia belt, Utah and Arizona. Found in the sage flats and in the pinyon-juniper belt at Grand Canyon.
- Erigeron eatoni A. Gray 128.16-39
Yellow pine, aspen and spruce belts. Oregon to Wyoming and Utah. Found under Grand View Point on the South Rim of Grand Canyon.
- Erigeron tener A. Gray 128.16-43
Montana and Idaho to Nevada and California. Transition and Canadian Zones. North Rim of Grand Canyon
- Erigeron gulielmi Greene 128.16
North Rim of Grand Canyon.

- Machaeranthera* Nees. "Tansy aster" "Prickly aster"
Machaeranthera leucanthemifolia Greene 128.
Aster leucanthemifolius
 Montana to Colorado, westward to Nevada, Upper Sonoran
 and Transition Zones. North Rim of Grand Canyon.
Machaeranthera angustifolia W. & S. 128.
 Wyoming to Arizona. Canadian Zone. Found on North Rim
 of Grand Canyon.
- Baccharis* L. "Groundsel tree"
Baccharis emoryi A. Gray 128.18-3
 Covillea and artemisia belts. Utah and Nevada to Texas
 and Southern California. Found on the South Rim of
 Grand Canyon, but mostly in the Canyon by water.
Baccharis glutinosa Pers. 128.18-5
 Colorado to California, Texas, Mexico and South America.
 Lower Sonoran Zone. Grows in abundance in Grand Canyon
 along Bright Angel Creek.
- Pluchea* Cass.
Pluchea sericea (Nutt.) Coville 128.19-2
Berthelotia sericea Rydb.
 Found from southwestern Utah to California, Mexico and
 Texas. In Lower Sonoran Zone. Collected in Grand
 Canyon north of the River.
- Antennaria* Gaertn. "Pussytoes" "Everlasting"
Antennaria rosulata Rydb. 128.22-7
 Yellow pine, aspen and spruce belts. Colorado, Utah and
 Arizona. Found on the North Rim of Grand Canyon on open
 hillsides.
Antennaria aprica Greene 128.22-9
 Manitoba, New Mexico, Nevada and British Columbia, Upper
 Sonoran, Transition and Canadian Zones. North Rim of
 Grand Canyon.
Antennaria rosea Greene 128.22-13
 Alaska to California and Colorado. Transition and
 Canadian Zones. Kaibab Forest.
- Gnaphalium* L. "Cud weed"
Gnaphalium wrightii A. Gray 128.24-5
 Upper Sonoran and Transition Zones. Colorado and New
 Mexico, westward to California. It occurs at Phantom
 Ranch in Grand Canyon.

- Hymenoclea Torr. & Gray
Hymenoclea salsola Torr. & Gray 128.28-1
 Covillea belt. Southwestern Utah to Arizona and California, Found in Grand Canyon National Monument.
- Franseria Cav. "Bur-sage"
Franseria dumosa A. Gray 128.30-2
 Covillea belt. Southwestern Utah and Nevada to California and Mexico. Occurs along Clear Creek Trail in Grand Canyon.
- Franseria eriocentra A. Gray 128.30-3
 Lower Sonoran Zone. Southwestern Utah, Nevada, California and Arizona. Collected on the Redwall along the Kaibab Trail and at Grand View.
- Zinnia L.
Zinnia grandiflora Nutt. 128.32-1
 Covillea and artemisia belts. Kansas and Texas to Nevada. Found on the South Rim of Grand Canyon.
- Viguiera H.B.K.
Viguiera multiflora (Nutt.) Blake 128.36-2
 Montana, New Mexico, west to Idaho and California. Transition and Canadian Zones. Kaibab Plateau in South Canyon and at Cape Royal.
- Helianthus L. "Sunflower"
Helianthus petiolaris Nutt. 128.37-3
 Artemisia belt, upward to spruce belt. Saskatchewan to Missouri, westward to California and British Columbia. Found at Trash Tank on South Rim and believed to occur at Marble Flats on the North Rim.
- Encelia Adans.
Encelia farinosa A. Gray 128.38-1
 Lower Sonoran Zone. Southern Utah to California, southward to Mexico. At Phantom Ranch in Grand Canyon.
- Encelia frutescens A. Gray 128.38-2
 California and Arizona. Lower Sonoran Zone. In Grand Canyon.
- Verbesina L. "Crownbeard"
Verbesina encelioides Gray var. exauriculata 128.40a
 Rob. & Greenm.
 Montana, Texas, Arizona. Upper Sonoran and Transition Zones. Kaibab Plateau.

- Helianthella* Torr. & Gray
Helianthella microcephala Gray 128.41-1
 Colorado, Utah and New Mexico. Dry hills in Upper Sonoran Zone. Found near Powell Spring on the North Rim.
- Helianthella quinquenervis* (Hook.) A. Gray 128.41-2
 Yellow pine, aspen and spruce belts. South Dakota to Idaho, southward to New Mexico and Nevada. Found in the neighborhood of Marble Flat on the North Rim.
- Bebbia* Greene
Bebbia juncea Greene 128.44-1
 Lower Sonoran Zone. California, southern Nevada and Arizona. At Grand Canyon it occurs at Phantom Ranch.
- Maidia* Mol. "Tarweed"
Maidia glomerata Hook. 128.46-3
 Artemisia belt, upward to spruce belt. Saskatchewan to Colorado and California. Found in such North Rim meadows as the Basin.
- Psilostrophe* DC. "Paperflower"
Psilostrophe tagetina var. *sparsiflora* A. Gray 128.51-3
Psilostrophe sparsiflora (A. Gray) A. Nels.
 Southern Utah and northern Arizona and New Mexico. Lower Sonoran Zone. Both rims of Grand Canyon.
- Laphamia* A. Gray
Laphamia toumeyi 128.53
 Upper Sonoran Zone. South Rim of Grand Canyon.
- Hymenopappus* L'Her
Hymenopappus filifolius Hook. 128.57-1
 Saskatchewan to Kansas and New Mexico, westward to Washington and Nevada. In Upper Sonoran and Transition Zones. Found on the South Rim of Grand Canyon.
- Hymenopappus lugens* Greene 128.57-5
 Ranges from southwestern Colorado and New Mexico westward to California. In Upper Sonoran Zone. Found on both rims of Grand Canyon.
- Actinea* Juss. "Colorado Rubber Plant"
Actinea richardsoni (Hook.) Kuntze 128.67-2
 Saskatchewan to New Mexico, Arizona and Utah. Canyons and rocky hillsides of Lower Sonoran up to Canadian Zone. Both rims of Grand Canyon.

- Actinea lemmoni (Greene) Blake 128.67-4
Hymenoxys greenei Rydb.
 California and western Nevada. Canyons and slopes of the Transition and Canadian Zones. Kaibab Forest.
- Actinea biennis (A.Gray) Kuntze 128.67-5
 Southern Utah, Nevada and Arizona. Canyons and rocky hillsides of Lower Sonoran to Transition Zone.
- Actinea acaulis arizonica (Greene) Blake 128.67-9b
Tetraneuris arizonica Greene
 Canyons and dry mountain slopes of Transition and Canadian Zones. Found on both rims of Grand Canyon.
- Actinea scaposa linearis (Nutt.) Robinson 128.67-10
 Kansas to Texas, New Mexico, southeastern Utah. Plains and hillsides of Upper Sonoran Zone. South Rim of Grand Canyon.
- Actinea subintegra 128.67
 North Rim of Grand Canyon.
- Gaillardia Foug. "Blanket flower"
Gaillardia pinnatifida Torr. "Red-eyed Susan" 128.69-5
 Colorado, Texas, Arizona and Utah. Lower Sonoran to Transition Zone. Both Rims of Grand Canyon.
- Dyssodia Cav.
Dyssodia acerosa DC. 128.70-1
 Plains and hillsides of the Covillea belt. Nevada to Texas and Mexico. Lower end of Toroweap Valley, Grand Canyon National Monument.
- Dyssodia pentachaeta (DC.) Robinson 128.70-2
 Covillea belt. Southern Utah to Mexico and Texas. Collected at Phantom Ranch in the Grand Canyon.
- Dyssodia thurberi (A.Gray) A. Nels. "Tiny Tim" 128.70-3
 Texas, Utah, Arizona, Mexico. Lower Sonoran Zone. In the Grand Canyon.
- Dyssodia berlandieri S. F. Blake 128.70
 Phantom Ranch, Grand Canyon.
- Achillea L. "Yarrow"
Achillea lanulosa Nutt. 128.74-1
 Saskatchewan, British Columbia, California and Mexico. Upper Sonoran to Canadian Zones. Occurs around the industrial area on the North Rim of Grand Canyon,
- Artemisia L. "Wormwood" "Mugwort" "Cudweed" "Sagebrush"
Artemisia dracunculoides Pursh 128.79-1
 Manitoba to Texas and Lower California. Upper Sonoran

- and Transition Zones. North Rim around Neal Spring.
- Artemisia forwoodii S. Wats. 128.79-2
Ontario to Saskatchewan, south to Arizona. Upper Sonoran and Transition Zones. North Rim of Grand Canyon.
- Artemisia frigida Willd. "Mountain sagebrush" 128.79-4
Minnesota to Alaska, southward to Texas. Upper Sonoran, Transition and Canadian Zones. North Rim of Grand Canyon on rocky points.
- Artemisia ludoviciana Nutt. 128.79-10
Upper Sonoran and Transition Zones. Missouri to Texas and California. Collected at Powell Saddle on the North Rim of Grand Canyon.
- Artemisia mexicana Willd. 128.79-11
Colorado, California, Mexico. Upper Sonoran and Transition Zones. North Rim of Grand Canyon.
- Artemisia wrightii A. Gray 128.79-14
Colorado, New Mexico, Utah and Arizona. Dry hills and mountains of Upper Sonoran and Transition Zones. North Rim of Grand Canyon.
- Artemisia bigelovii A. Gray 128.79-16
Upper Sonoran Zone. Colorado to Texas and Arizona. Point Sublime, North Rim of Grand Canyon.
- Artemisia arbuscula "Low sage-brush" 128.79-19
Wyoming, California and Oregon. Dry mountains and high plains. Transition and Canadian Zones. South Rim of Grand Canyon.
- Artemisia tridentata Nutt. "Sagebrush" 128.79-21
Washington, Nevada, Colorado and California. Characteristic plant of Upper Sonoran and Transition Zones. Ranging upward to Canadian Zone. Common sage of sage flats on both rims.
- Arnica L.
- Arnica cordifolia Hook. 128.82-6
Yellow pine, aspen, spruce and subalpine belts. British Columbia to Colorado and California. Collected on the North Rim of Grand Canyon.
- Arnica foliosa Nutt. 128.82-12
Transition and Canadian Zones. Alaska to Colorado and Utah. V. T. Park, Kaibab Forest, Arizona.
- Senecio L. "Groundsel"
- Senecio ambrosioides Rydb. 128.86-11
Wyoming, New Mexico and Utah. Canadian Zone. North Rim of Grand Canyon around Greenland Spring.

- Senecio multilobatus Torr. & Gray 128.86-17
Artemisia, pinyon and yellow pine belts. Wyoming, Utah and Nevada. Found on the South Rim in the sage flats and under yellow pine.
- Senecio lynceus Greene 128.86-19
Arizona, Nevada and Utah. Upper Sonoran Zone. North Rim of Grand Canyon.
- Senecio uintahensis (A. Nels.) Greenm. 128.86-20
Wyoming, Oregon, California and Arizona. Transition and Canadian Zones. Both rims of Grand Canyon.
- Cirsium Hill "Thistle"
- Cirsium nidulum (Jones) Petrak "Large red thistle"
Confined to Utah and Arizona. Upper Sonoran /128.88-15 Zone, but appears on dry exposed slopes up to Canadian Zone. Found on the North Rim of Grand Canyon.
- Cirsium perennans (Greene) W. & S. "Lavender thistle"
Mountains of southern New Mexico. Upper /128.88 Sonoran and Transition Zones. North Rim of Grand Canyon
- Cirsium pulchellum (Greene) W. & S. 128.88-17
Artemisia, pinyon and yellow pine belts. Colorado, Utah and New Mexico. Found under the yellow pine of the North Rim but believed to occur on both rims.
- Ptiloria Raf.
- Ptiloria pauciflora (Torr.) Raf. 128.95-6
Plains and foothills of Lower and Upper Sonoran Zones. Kansas to California, Arizona and Texas. Collected at Greenland Point at Grand Canyon.
- Leontodon L. "Dandelion"
- Leontodon taraxacum L. "Common dandelion" 128.102-4
Labrador to Alaska, North Carolina, California and Mexico. Waste places. Introduced from Europe. On both rims of the Grand Canyon.
- Sonchus L. "Sowthistle"
- Sonchus asper (L.) Hill 128.103-4
Fields and canyons of the Great Basin. Introduced from Europe. A weed throughout the United States. In Grand Canyon north of the River.
- Agoseris Raf. "Wild Dandelion"
- Agoseris leptocarpa Osterhout 128.106-5
Agoseris arizonica "Pink Mountain Dandelion"
Wyoming to New Mexico, Arizona and Utah. Canadian Zone.

Grows in meadows and on open slopes of the Kaibab Forest
Agoseris glauca parviflora (Nutt.) Rydb. 128.106-8a

Agoseris confinis Greene "Yellow Dandelion"

Manitoba to Washington, southward to North Dakota, Utah
 and New Mexico. Upper Sonoran and Transition Zones.

Kaibab Forest and South Rim of Grand Canyon

Agoseris taraxicifolia (Nutt.) D. Dietr. 128.106-10

Montana to British Columbia, California and Utah.

Canadian Zone. Grows in meadows of the Kaibab Forest.

Crepis L.

Crepis occidentalis Nutt. "Groundsel" 128.107-7

Plains, canyons and mountain slopes of Upper Sonoran and
 Transition Zones. Saskatchewan to British Columbia,
 southward to Colorado, Arizona and California. South
 Rim of Grand Canyon.

Perezia Lag.

Perezia wrightii A. Gray 128

Western Texas to southern Arizona and southward. Occurs
 at Phantom Ranch in the Grand Canyon.

Trixis P. Br.

Trixis californica Kell. 128

Desert washes, west and north boundary of the Colorado
 Desert, east to Arizona, south to Lower California.

Found at Phantom Ranch in the Canyon.

