

**Report on the Grimwade Plant Collection of Percival St John  
and Botanical Exploration of Mt Buffalo National Park  
(Victoria, Australia)**



**Alison Kellow  
Michael Bayly  
Pauline Ladiges**



**School of Botany, The University of Melbourne**

**July, 2007**

## Contents

Summary .....	3
Mt Buffalo and its flora.....	4
History of botanical exploration.....	5
The Grimwade plant collection of Percival St John.....	8
A new collection of plants from Mt Buffalo - The Miegunyah Plant Collection (2006/2007) .....	13
Plant species list for Mt Buffalo National Park.....	18
Conclusion.....	19
Acknowledgments.....	19
References .....	20
Appendix 1 Details of specimens in the Grimwade Plant Collection.....	22
Appendix 2 Details of specimens in the Miegunyah Plant Collection.....	26
Appendix 3 Plant species list for Mt Buffalo National Park.....	35
Appendix 4 List of taxa excluded from the current plant list for Mt Buffalo National Park .....	52

**Cover photo:** Mt Buffalo Sallee (*Eucalyptus mitchelliana*), a species endemic to Mt Buffalo and included in the Grimwade Plant Collection.

## Summary

In 1938/39 botanist Percival St John was commissioned to make a collection of plants (the Grimwade Plant Collection) from the Mt Buffalo plateau in north-east Victoria. In 2006 a grant from The Miegunyah Foundation to the School of Botany, The University of Melbourne, facilitated: A) re-location, curation and databasing of this plant collection; B) a new collection of plants from Mt Buffalo (the Miegunyah Mt Buffalo Collection), including duplicate sets of specimens to be housed at the University of Melbourne Herbarium (MELU) and at the Mt Buffalo Chalet; C) an update of the plant species list for Mt Buffalo National Park. This report summarises the activities funded by that grant, and provides a brief review of botanical exploration on Mt Buffalo.

After relocation of the Grimwade Plant Collection to MELU in April 2006, all specimens were cleaned, reidentified and databased, and details of the collection, including photographs of specimens, are now publicly available through the website of the School of Botany (<http://www.botany.unimelb.edu.au/buffalo/about.htm>). A total of 226 species of vascular plants were collected for the Miegunyah Mt Buffalo Collection during collecting trips made in April 2006, November-December 2006, and January 2007. The revised list of vascular plants Mt Buffalo National Park now includes 617 species, subspecies and varieties, with 129 new additions to the list in the course of this study.

1 July, 2007.

## Mt Buffalo and its flora

Mt Buffalo is in north-east Victoria, c. 320 km from Melbourne. The mountain is a granite massif with a broad plateau, surrounded at lower altitudes by ranges of metamorphosed Ordovician sedimentary rock. The plateau has an undulating topography with exposed granite tors, at an altitude between c. 1300 m and 1723 m above sea level.

The mountain forms the core of the Mt Buffalo National Park, which was first established in 1898, making it, along with Wilson's Promontory, one of Victoria's oldest National Parks. Summaries of the history of the Mt Buffalo, including exploration, the early development of cattle grazing, and the history of tourism and recreational skiing on the plateau are provided by Webb & Adams (1998) and in a number of articles in a special issue of *The Victorian Naturalist* (115(5), 1998).

Mt Buffalo has a diverse and interesting flora, including more than 600 species of vascular plants as estimated in this report. The plateau supports alpine vegetation including Snowgum (*Eucalyptus pauciflora*) woodland and a mosaic of shrubland, grassland and bog communities. This alpine vegetation is somewhat disjunct from other areas of the Victorian high country (e.g., separated from the nearest alpine peaks of Mt Cobbler and Mt Feathertop by broad and deep valleys), and for this reason, the mountain is sometimes considered a botanical 'island' (Walsh 1998; Costermans 1994). The higher slopes of the mountain support montane forest dominated by Alpine Ash (*Eucalyptus delegatensis*). At lower altitudes there are areas of heathy vegetation around exposed granite slabs, and foothill forests dominated by a range of eucalypts, including peppermints (*E. dives*, *E. radiata*), Brittle Gum (*E. mannifera*), Candle Bark (*E. rubida*), Red Stringybark (*E. macrorhyncha*), and Manna Gum (*E. viminalis*), depending on aspect and altitude. Particularly notable among the flora are a number of taxa that are endemic or almost endemic to the mountain, these being: Buffalo Sallee (*Eucalyptus mitchelliana*), Buffalo Sallow Wattle (*Acacia phlebophylla*), Buffalo Grevillea (*Grevillea alpivaga*) and Fern-leaf Baeckea (*Babingtonia crenulata*). Also of note is the endangered Snow Pratia (*Lobelia gelida*), for which the only known populations are on Mt Buffalo (Albrecht 1999).

## History of botanical exploration

The first European botanist to investigate the flora of Mt Buffalo was the newly appointed Government Botanist, Ferdinand von Mueller in 1853. Together with John Dallachy, the superintendent of Melbourne's botanic garden, he travelled widely over the plateau. Altogether he collected specimens of 45 plant species, at least 12 of which came from within current National Park boundaries<sup>1</sup>, and 13 of which were new species named by him (Gillbank & Maroske 1998). These were sent back to the herbarium at the Royal Botanic Gardens, where they remain to this day.

Other early plant collectors on the mountain, who provided specimens to the National Herbarium of Victoria, included C. Walter (1891–1904), K. Cowle (1903-1904), G. Weindorfer (1902-1904), and W. R. Baker (1910). A reasonable indicator of the intensity of botanical investigation on Mt Buffalo can be seen in the rate of accumulation of plant specimens at the National Herbarium of Victoria (Fig. 1). From sparse beginnings, with visits of these early collectors, the number of specimens in that herbarium has steadily grown.

Percival St John first collected specimens on Mt Buffalo in 1903, and collected sporadically until 1931. In 1938 he made his major collection, after being commissioned to do so by Sir Russell Grimwade (see below). However, that collection, the subject of this current report, was not lodged in a herbarium until it was moved to The University of Melbourne in 2006.

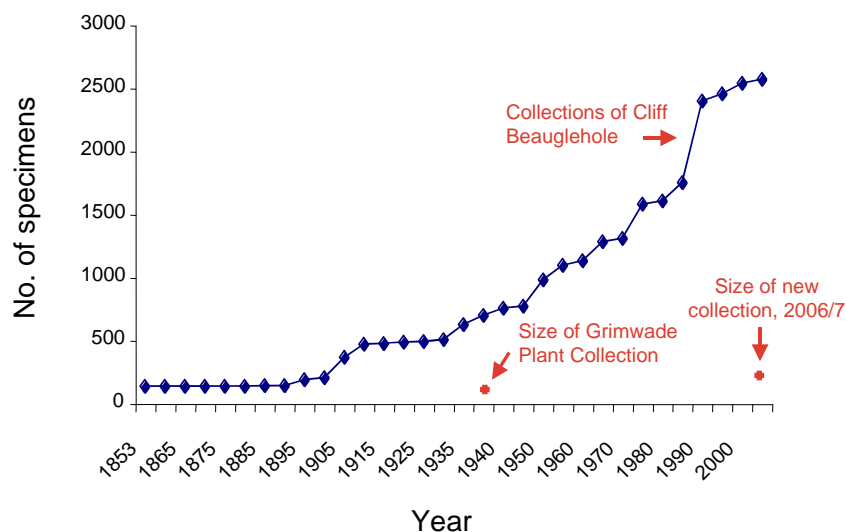
A note by J. H. Willis in the library at the National Herbarium of Victoria suggests that another plant collection of 338 [species] was made by F. Hobson, who was Park Ranger at Mt Buffalo in 1951 (Webb & Adams 1998). We have not been able to ascertain what this collection comprised, nor its current location, if indeed it still exists.

---

<sup>1</sup> It is not possible to tell with certainty which of Mueller's specimens came from within current park boundaries, as he used the term "Buffalo Range" to describe not only Mt Buffalo, but also surrounding foothills (Gillbank & Maroske 1998).

In addition to collections of specimens, several botanists began the task of compiling lists of plant species present on the mountain. In particular J. H. Willis, in his capacity as Assistant Government Botanist, published such a list in 1963, including 300 species. In 1970 it was amended to include 442 species, 46 of which were naturalized, based partly on another species list compiled by Hugh Stewart (council member and one time president of the Field Naturalists club of Victoria) in 1963.

**Fig. 1** Graph showing the number of specimens of vascular plants from Mt Buffalo held by the National Herbarium of Victoria. The large increase in specimens in the 1980s was largely through the efforts of A. Cliff Beuglehole. Also shown for comparison are the numbers of specimens in the Grimwade Plant Collection and the new collection made as part of the current study.



In 1987 a major survey of the flora of Mt Buffalo National Park was undertaken by A. Cliff Beuglehole, as part of his larger survey of Victoria. Beuglehole collected many specimens that have been lodged at the National Herbarium of Victoria, the greatest single input of specimens since 1853 (Fig. 1), and included new records for many species. Beuglehole published a species list for the park based on both his own collection and on existing records (Beuglehole, 1988). That list included 555 native vascular plant species.

The flora of Mt Buffalo is now generally well-known, with a large base of herbarium specimens and a growing body of published and unpublished reports. Refinement of the species list for the park is ongoing, with further additions being made in the course of the current study (details below). In 2001 Parks Victoria, together with the Mount Buffalo Field Naturalist Group, the Centre for Environmental Management (University of Ballarat) and Pathways Bushland and Environment published the *Mount Buffalo Plateau Vegetation Map*, mapping 20 vegetation/habitat types on the plateau at a scale of 1:20,000. A number of recent studies have focussed on the ecology and

conservation of individual species (e.g., Lawler et al. 1997, 1998; Morgan et al. 2003; Carter & Walsh 2006). There have also been studies of impact of fire on the vegetation of Mt Buffalo (e.g., Rees & Walsh 1985, 2000; Wahren & Walsh 2000; Coates *et al.* 2004), which are likely to be ongoing given the recent history of fires on the mountain (with serious fires in 1939, 1985, 2003 and 2006/7).



*Prostanthera monticola*, Buffalo Mint-bush, a species included in the Grimwade Plant Collection

## The Grimwade Plant Collection of Percival St John

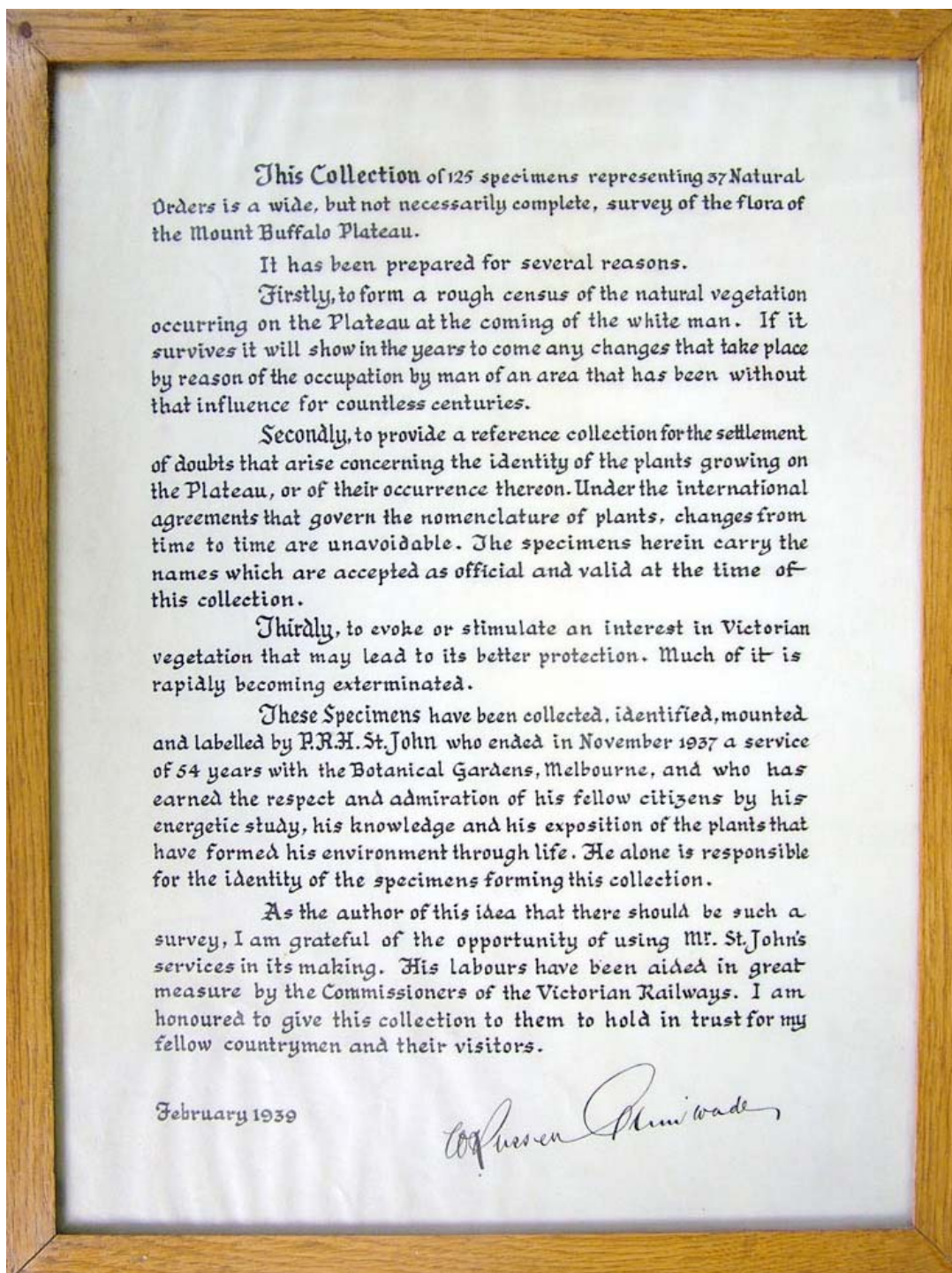
In 1938, Sir W. Russell Grimwade (1879-1955) commissioned botanist Percival R. H. St John (1872–1944) to make a collection of plants from the Mt Buffalo Plateau (referred to as the Grimwade Plant Collection). The purpose of the collection is outlined in framed notes, signed by Russell Grimwade, that accompany the collection (Fig. 2). The collection aimed to provide a rough census of the flora at that time, to establish a reference collection of plant specimens for the area, and to further stimulate interest in the native vegetation of Victoria.

St John, who was recently retired from a position at the National Herbarium of Victoria, had a reputation for making surveys in what were, at the time, relatively remote areas (Fletcher 1998; Morris 1944). Specimens in that herbarium indicate that St John had previously visited Mt Buffalo on several occasions (1903, 1907, 1929, 1930, 1931, and 1935), and would, therefore, have already had some familiarity with the flora of the mountain. His collection of plants for Russell Grimwade was made on two visits to the mountain, one in November 1938, the other in March 1939. The localities that he visited included: The Chalet, Mackeys Lookout, Lake Catani, The Horn, Mt McLeod, The Reservoir, Crystal Brook Falls, Eagle Point, The Monolith, Five Acre Plain, The Leviathan, Wild Dog Plains, Rollasons Falls, and various others.

The Grimwade Plant Collection includes a total of 136 herbarium specimens, representing 133 species using current classification schemes (Appendix 1). The specimens (e.g., Fig. 3) are mounted on paper sheets and stored in four folios. Each sheet is labelled with a botanical name, common name(s), synonyms (where appropriate), and usually some comments on the distribution and any potential uses of the species.

The collection is a good survey of the common trees, shrubs and forbs encountered on the Mt Buffalo Plateau, and at some well-visited localities on the lower slopes of the mountain near the main access road (e.g., Eurobin Falls, Mackeys lookout, Rollasons Falls). It is, however, not truly representative of the vascular flora of a whole. For instance, it includes no grasses or sedges, just one orchid species, and only a subset of the eucalypts. Using plant specimens held at the National Herbarium of Victoria as guide, the





**Fig. 2** Framed notes, signed by Sir Russell Grimwade, accompanying specimens of the Grimwade Plant Collection.

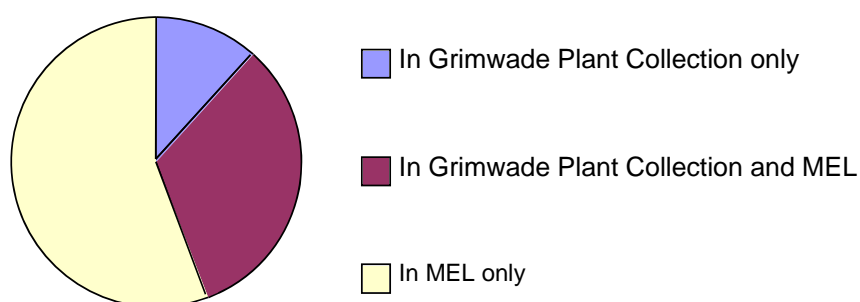


**Fig. 3** Example of a specimen from the Grimwade Plant Collection: the daisy, Hoary Sunray, *Helipterum albicans*, now *Leucochrysum albicans*.

collection represented close to half of the number of species of vascular plants known to occur on Mt Buffalo in 1939 (Fig. 4). In current terms, the collection represents c. 22% of the known flora of the area (see details of the current plant species list for Mt Buffalo in following sections of this report).




Since 1939, the Grimwade Plant Collection has mostly been housed at the Mt Buffalo Chalet. During much of this period it was available for examination by visitors to the Chalet, and these decades of public use resulted in some damage to the collection, e.g., with some plant fragments being dislodged from specimens and others becoming loose on their mounting sheets.

As part of the move of this collection to the herbarium of The University of Melbourne (MELU) in 2006, efforts have been made to repair the specimens and limit further damage. This has involved re-attaching specimens to their mounting sheets with herbarium tape and, where necessary, mounting fragment bags on the specimens in order to hold smaller fragments. In addition, written information on the sheets has been captured in MELU's electronic specimen database, and all sheets in the collection have been photographed. These specimen photographs, as well as other details about the species they represent, are now publicly available through the website of the School of Botany, The University of Melbourne, at <http://www.botany.unimelb.edu.au/buffalo/about.htm> (e.g., Fig. 5).



**Fig. 4.** Pie chart showing the representation of vascular plant species of Mt Buffalo in the Grimwade Plant Collection and the National Herbarium of Victoria (MEL) in 1939. The total number of species in the two collections at that time was 269.


Thysanotus tuberosus

[About](#) [Index](#) [Glossary](#)

A B C D E F G H I J K L M N O P Q R S T U V W X Y Z

---



Original St John collection.




Photo of plant on Mt Buffalo, November 2006.

**Common name**

Common Fringe-lily

**Family**

Liliaceae

**Grimwade Sheet No.**

119

**Original identification**

*Thysanotus tuberosus*

**Distribution (from Flora of Victoria)**

(subsp. *tuberosus*) [Vic.](#) [GR](#), [MID](#), [OTPL](#), [EHL](#), [GPL](#), [PROM](#), [EG](#) - also [SA](#), [Qld](#), [NSW](#).

Scattered in light forest and heath at low to mid-altitudes through much of the state, but very rare or absent from the far west.

[Get map from Australia's Virtual Herbarium](#)

Top

**Flowering time**

Oct. - Jan.

**Fig. 5.** Image from webpages about the Grimwade Plant Collection, available through the website of the School of Botany at The University of Melbourne (<http://www.botany.unimelb.edu.au/buffalo/about.htm>). These pages include photographs of the specimens and, where possible, photos of the same species growing in the wild on Mt Buffalo. There are also notes on the common name, plant family, distribution and original identification of all species in the collection. There is a link to Australia’s Virtual Herbarium, which provides distribution maps based on an Australia-wide database.

## A new collection of plants from Mt Buffalo – The Miegunyah Plant Collection (2006/2007)

In 2006 Dr Alison Kellow, Dr Mike Bayly and Prof. Pauline Ladiges undertook to replace the original St John collection with a new collection of plants from Mt Buffalo. An initial collecting trip was made in April 2006, followed by a trip of 8 days from 26<sup>th</sup> November – 3<sup>rd</sup> December 2006, with a final collecting trip planned for January 2007. The November/December trip was followed by the 2006/2007 bushfires in which a large percentage of the National Park was burnt. Once it was safe to return to the park, a final trip was made from the 8<sup>th</sup> to the 11<sup>th</sup> of January 2007. That trip was restricted in scope as a result of the fires, some of which re-ignited during this time, resulting in further closure of the park. In total 226 species (227 taxa) were collected and photographed (Appendix 2). This included 116 species additional to those collected by St John. Six species originally collected by St John were not recollected (or photographed) in the current study. All of these, perhaps apart from *Comesperma ericinum*, almost certainly still occur in Mt Buffalo National Park and none of them is of conservation concern (for details see Table 1).

The 2006/2007 collection was carried out by first visiting the most accessible areas, both on and off the plateau, followed by collecting sites chosen to target species in the original collection that had not yet been relocated. On the plateau, collections were made at localities including: The Corral and along the track to Corral Peak, Cathedral Peak, near the Reservoir, near Dingo Dell, near the Chalet, along the South Buffalo track, along the Dicksons Falls track, along the track to the Back Wall, near Cresta Ski Lodge, near The Gap, around Lake Catani. Below the plateau collections were made along the roadside and at localities including: the track to Rollasons Falls, along the track to Eurobin Falls, Eurobin picnic area, Mackeys Lookout, parts of The Big Walk.

On the first two trips, mostly only species in flower were collected, with the plan to collect the remainder in January. Unfortunately, due to subsequent fires, it was not possible to collect some of these species (e.g., *Correa lawrenciana*, *Hakea lissosperma*) that had previously been seen but not collected. Orchids were not collected, but were photographed and locality details recorded. Because there was limited time available for collecting trips, the new collection was deliberately focused on the same components of

the flora (shrubs, trees and forbs) collected by St John, i.e., no grasses and only very few sedges were included.



Fig. 6. Examples of herbarium specimens from the 2007 Miegunyah Mt Buffalo collection.

All specimens from the new collection are recorded in the electronic database of The University of Melbourne (MELU), which is available for searching at <http://www.botany.unimelb.edu.au/herbarium/database.html>. Each specimen includes two herbarium sheets, one held at MELU, the other sent to Parks Victoria at Mt Buffalo for public use. The specimens for public display at Mt Buffalo are mounted on archival herbarium card, accompanied by a computer-generated herbarium label and, in almost all cases, by a colour photograph of a living plant from which the specimen was taken (Fig. 6). These sheets are stored in archival plastic sleeves and sorted into eleven A3 ring binders, both for protection and for easy access. Specimens are arranged in the numbered binders according to plant form (twining plants, shrubs, herbs, trees etc.) and then sorted by family and genus. Specimens are numbered sequentially and an index is provided (Appendix 2).

**Table 1.** Species in Grimwade collection, not recollected in 2006-2007.

Species name	Distribution (from <i>Flora of Victoria</i> , Vols 3 & 4)	Comment	Most recent collection at MEL	Other verification of presence in park
<i>Brachyscome nivalis</i>	Locally common in sheltered rocky sites in alps (e.g. Mts Buller, Cobbler, Hotham and Wellington, and Bogong High Plains), occasional in grassland, herbfield or Snow Gum woodland communities. Also NSW, ACT.	Recorded from near The Horn, where it might have been found in flower in January. This area was extensively burnt in Dec 2006 and the species could not be relocated.	1952	Photographed by R. Briggs, track to the Back Wall, 19 Jan. 1999
<i>Comesperma ericinum</i>	Occurs mostly in damp heathland and heathy forest in the lowlands extending into taller foothill forests (to c. 1000 m) in the eastern and north-eastern ranges; uncommon west of Melbourne. Also Qld, NSW, Tas.	St John's is the only verified record of the species, which is common and widespread in Victoria. Interestingly, <i>Comesperma retusum</i> is common at the locality cited by St John.	no verified records	
<i>Dillwynia sericea</i>	Widespread across most of Victoria in heathland and heathy woodland. Also SA, Qld, NSW, ACT, Tas.	Although this species was not collected it is thought to be relatively common on the granite slab areas (e.g. around Mackeys Lookout)	2000	Photographed by R. Briggs, below Mackeys Lookout, 18 Nov. 2005



Species name	Distribution (from <i>Flora of Victoria</i> , Vols 3 & 4)	Comment	Most recent collection at MEL	Other verification of presence in park
<i>Exocarpos strictus</i>	Apart from very dry and very wet communities, almost ubiquitous in heathland, woodland and open-forests throughout Victoria. Also SA, Qld, NSW, ACT, Tas.	This is a common and widespread lowland species that was probably not relocated due to limited collecting on the lower slopes.	1987	
<i>Neopaxia australasica</i>	Widespread in cooler parts of the state, occurring mainly in perennial or seasonal swamps and slow-moving rivers in the lowlands, and in seepage areas or on bare gravelly or rocky ground in the alps. Also WA, SA, NSW, Tas, New Zealand.	This species could not be relocated in an area in which it was recently photographed. It occurs in boggy sites and has possibly been affected by the continuing drought. It is widespread and common in Victoria.	1987	Photographed by R. Briggs, Camp Plain, 23 Nov. 2002
<i>Prostanthera hirtula</i>	Scattered but uncommon [in Victoria], usually in elevated rocky sites in woodland and open forest communities. Also NSW.	This species is found near Mt McLeod, and along the track to the Back Wall but due to fire risk, we were unable to collect in these areas.	No records	Photographed by R. Briggs, track to the Back Wall, 24 Jan. 2002
<i>Ranunculus X ligualtus</i>	n/a	Hybrid; both parent species ( <i>R. graniticola</i> and <i>R. millanii</i> were collected)		

## Plant species list for Mt Buffalo National Park

The list of vascular plants occurring in Mt Buffalo National Park has been continually developed since the early work of J. H. Willis and H. Stewart (discussed above). The list available from Parks Victoria at the commencement of this study was compiled by Willis, with revisions by N. G. Walsh (RBG, Melbourne) and Ian Endersby (Field Naturalists Club of Victoria). It was last updated in 1999 and included a total of 496 vascular plants (including subspecies and varieties).

Part of the scope of this current project was to provide Parks Victoria with an updated species list for Mt Buffalo National Park. There were three aspects to this revision: 1) updating species names to incorporate changes associated with recent taxonomic revisions; 2) adding new taxa to the list based on verified herbarium specimens, our own field collections, and recent photographs; 3) removing from the list those taxa whose presence in the National Park could not be substantiated by verifiable records, and seemed unlikely. Updating names to follow currently accepted classifications was done primarily through the use of the Australian Plant Name Index (APNI – <http://www.cpbr.gov.au/cpbr/databases/apni.html>) and the *Census of the Vascular Plants of Victoria* 7<sup>th</sup> edition (Ross & Walsh 2003), with further advice from Neville Walsh and Jeff Jeanes (RBG Melbourne). The majority of new taxa added to the list were based on herbarium specimens already held at the National Herbarium of Victoria (MEL). All specimen records from Mt Buffalo were extracted from the electronic database of that herbarium, in order to identify any taxa included in the database that were not previously included on the species list for Mt Buffalo. For any taxa falling into this category we then examined the supporting herbarium specimens to verify their identifications and locality data (to ensure accuracy), before adding them to the Mt Buffalo species list. A few new additions to the plant list were based on collections made in the current study, or recent photographs taken by Roger Briggs (Mt Buffalo Field Naturalist Group).

The revised species list comprises 617 species, subspecies and varieties (Appendix 3). 129 taxa were added, based on new records, and 14 taxa removed (Appendix 4). A proportion (c. 17%) of the new additions to the list are introduced species (weeds), but the vast majority are native species, mostly from the lower slopes of the National Park, that are relatively widespread in Victoria, but had been over-looked in earlier revisions of the

species list. Omission of these species from earlier lists is understandable, given that most effort has focused on the vegetation of the plateau, and because extensions of the park boundary have increasingly incorporated more of the surrounding slopes.

## Conclusion

This report provides an updated list of the vascular plants of Mt Buffalo National Park, and an index for the new Miegunyah Mt Buffalo Collection. Given the limitation of field seasons, including the 2006-2007 summer fires, some species included in the original Grimwade Plant Collection have not been collected. The new mounted collection will provide interested visitors to Mt Buffalo National Park with a reference for plant identification. The plants of the original Grimwade collection can now be viewed easily through the University of Melbourne website (<http://www.botany.unimelb.edu.au/buffalo/about.htm>).

## Acknowledgments

This work was funded by The Miegunyah Foundation. Staff of Parks Victoria and The Mt Buffalo Chalet assisted with re-location of the Grimwade Plant Collection. Felicity Brooke (Ranger in Charge) and the Staff of Parks Victoria on Mt Buffalo were also very helpful at a difficult time, during the 2006/2007 fire season, when the new collection of replacement specimens was being made. Jeff Jeanes, Kevin Rule and especially Neville Walsh, of the National Herbarium of Victoria, provided a great deal of helpful advice and assisted with plant identifications. Pina Milne, also of the National Herbarium of Victoria, helped us on our visits to use the collections of the herbarium. Nicole Middleton assisted with the incorporation of specimens into the University of Melbourne Herbarium, and Trisha Downing mounted the specimens for the new plant collection. Members of the Mt Buffalo Field Naturalist Group, in particular Roger and Meredith Briggs, and Clyde O'Donnell, kindly provided a number of the plant photographs used in the webpages based on the Grimwade Plant Collection. Members of the group also provided helpful advice and company in the field. The National Herbarium of Victoria provided access to records from Mt Buffalo held in their database. Parks Victoria provided a collecting permit. Finally we acknowledge the interest of Sir Andrew Grimwade.

## References

- Albrecht, D. E. (1999). *Pratia*. In Walsh, N. G. & Entwisle, T. J. (eds), *Flora of Victoria*, Vol. 4. pp. 568–572. Inkata Press, Melbourne.
- Beauglehole, A. C. (1988) *The Distribution and Conservation of Vascular Plants in the North East Area, Victoria*. A. C. Beauglehole, Portland, Victoria.
- Carter, O. & Walsh, N. (2006). *National Recovery Plan for the Fernleaf Baeckea Babingtonia crenulata*. Department of Sustainability and Environment, Melbourne.
- Cayzer, L. W., Crisp, M. D & Telford, I. R. H. (2004) Cladistic analysis and revision of *Billardiera* (Pittosporaceae). *Australian Systematic Botany* 17, 83–125.
- Coates, F., Taranto, M., Trumbull-Ward, A. & Browne, A. (2004) *Post-fire recovery of priority populations of threatened flora in north-east Victoria after the 2003 bushfires*. Arthur Rylah Institute for Environmental Research Technical Report No. 150. Department of Sustainability and Environment, Victoria, Melbourne.
- Costermans, L. (1994). *Native Trees and Shrubs of South-Eastern Australia*. 5<sup>th</sup> edition. Landsowne Publishing, Sydney.
- Fletcher, R. J. (1998) Mount Buffalo and Percival R.H. St. John. *The Victorian Naturalist* 115, 192–200.
- Gillbank, L. & Maroske, S. (1998). Fourteen plants and a fungus: Ferdinand Mueller's taxonomic imprint on the flora of the Buffalo Range. *The Victorian Naturalist* 115, 188–191.
- Lawler, S., J. Burston, B. Cockayne, N. Smedley & P. Massingham (1997). Environmental determinants of the distribution of the Buffalo Sallee *Eucalyptus mitchelliana*. *The Victorian Naturalist* 114: 278–281.
- Lawler, S., S. Brown, G. Edney, S. Howlett & P. Love (1998). Buffalo Sallee at the Back Wall: an alpine species adapted to fire and drought. *The Victorian Naturalist* 115: 204–208.
- Morgan, J., Venn, S., Wearne, L., Bartley, M. & McMillan, S. (2003) Small-scale patterns of occurrence of Snow *Pratia* *Pratia gelida* at Hospice Plain, Mount Buffalo National Park. *The Victorian Naturalist* 120, 4–9.
- Morris, P. F. (1944). The late Percival R. H. St. John. *The Victorian Naturalist* 61, 95.
- Rees, H. van & Walsh, N.G. (1985). *Monitoring of the burnt vegetation the Mt Buffalo plateau, Victoria*. Department of Conservation, Forests and Lands, Victoria.

- Ross, J. H. & Walsh, N. G. (2003). *A Census of the Vascular Plants of Victoria*. 7<sup>th</sup> edition. National Herbarium of Victoria, Royal Botanic Gardens Melbourne.
- Thompson, I. (2001) Morphometric analysis and revision of eastern Australian *Hovea* (Brongniartiae — Fabaceae). *Australian Systematic Botany* 14, 1–99.
- Toelken, H. R. (1998) Notes on *Hibbertia* (Dilleniaceae) 2. The *H. aspera* - *empetrifolia* complex. *Journal of The Adelaide Botanic Gardens* 18, 107–160.
- Wahren C-H. A & Walsh, N. G. (2000). *Impact of fire in treeless subalpine vegetation at Mt Buffalo National Park, 1982–1999*. La Trobe University, Bundoora, Victoria.
- Walsh, N. (1998) Mount Buffalo: botanical bridge or island? *The Victorian Naturalist* 115, 186–187.
- Walsh, N. G. & Entwisle, T. J. (Eds) (1996–1999). *Flora of Victoria*. Vols 3, 4. Inkata Press, Melbourne.
- Webb, D & Adams, R (1998). *The Mount Buffalo Story, 1898–1998*. The Miegunyah Press, Melbourne University Press, Melbourne.

## Appendix 1. Details of specimens in the Grimwade Plant Collection made by Percival St John.

This is an updated list of specimens, including current identification, original identification (where different), and herbarium number at the Herbarium of the School of Botany (MELU), University of Melbourne, where the collection is now lodged.

Sheet No.	Species name	Original identification	Common name (as originally given)	MELU No.
1	<i>Acacia alpina</i>		Alpine Wattle	102836
2	<i>Acacia dallachiana</i>		Catkin Wattle	102837
3	<i>Acacia obliquinervia</i>	<i>Acacia falciformis</i>	Mountain Hickory Wattle	102839
4	<i>Acacia phlebophylla</i> **		Buffalo Sallow Wattle	102878
5	<i>Asperula gunnii</i>		Mountain Woodruff	102880
5a	<i>Asplenium flabellifolium</i>		Necklace Fern	102881
6	<i>Asterolasia asteriscophora</i>	<i>Asterolasia Muellerei</i>	Lemon Star-bush	102882
7	<i>Astrotricha asperifolia</i> subsp. 1	<i>Astrotricha ledifolia</i>		102883
8	<i>Babingtonia crenulata</i> **	<i>Baeckea crenatifolia</i>	Fern-leaf Baeckea	102884
9	<i>Baeckea gunniana</i>		Alpine Baeckea	102885
10	<i>Euryomyrtus ramosissima</i>	<i>Baeckea ramosissima</i>	Rosy Baeckea	102886
11	<i>Billardiera macrantha</i>	<i>Billardiera longiflora</i>	Purple Apple-berry	102887
12	<i>Billardiera mutabilis</i>	<i>Billardiera scandens</i>	Common Apple-berry	102888
13	<i>Blechnum nudum</i>	<i>Blechnum discolor</i> var. <i>nudum</i>	Fishbone Water-fern	102889
14	<i>Blechnum penna-marina</i>		Alpine Water-fern	102890
15	<i>Boronia algida</i>		Alpine Boronia	102891
16	<i>Bossiaea foliosa</i>		Leafy Bossiaea	102892
17	<i>Brachyscome nivalis</i>	<i>Brachyscome nivalis</i>		102932
18	<i>Brachyscome spathulata</i>	<i>Brachyscome scapiformis</i>	Spoon Daisy	102933
19	<i>Comesperma ericinum</i>	<i>Bredemeyera ericinum</i>	Heath Milkwort	102934
20	<i>Caladenia alpina</i>		Mountain Caladenia	102935
21	<i>Callistemon pallidus</i>		Lemon Bottlebrush	102936
22	<i>Callistemon pityoides</i>	<i>Callistemon Sieberi</i>	Alpine Bottlebrush	102937
23	<i>Psychrophila introloba</i>	<i>Caltha intraloba</i>	Alpine Marsh-marigold	102938
24	<i>Calytrix tetragona</i>	<i>Calytrix scabra</i> ; <i>C. virgata</i>	Common Fringe-myrtle (Rough-leaf Fringe-myrtle)	102939
25	<i>Celmisia tomentella</i>	<i>Celmisia longifolia</i>		102940
26	<i>Cheilanthes austrotenuifolia</i>	<i>Cheilanthes tenuifolia</i>	Rock Fern	102941
27	<i>Neopaxia australasica</i>	<i>Claytonia australasica</i>	White Purslane	102942
28	<i>Coprosma hirtella</i>		Rough Coprosma	102943
29	<i>Craspedia jamesii</i>	<i>Craspedia uniflora</i>	Green Billy-buttons	102944
30	<i>Daviesia ulicifolia</i> subsp. <i>ruscifolia</i>	<i>Daviesia ulicina</i> var. <i>ruscifolia</i>	Gorse Bitter-pea	102945
31	<i>Dianella admixta</i>	<i>Dianella revoluta</i>		102946
32	<i>Dillwynia sericea</i>	<i>Dillwynia floribunda</i>	Showy Parrot-pea	102947
33	<i>Dodonaea viscosa</i> subsp. <i>cuneata</i>	<i>Dodonaea viscosa</i> var. <i>spathulata</i>	Sticky hop-bush	102948
34	<i>Tasmannia xerophila</i>	<i>Drimys lanceolata</i>	Alpine Pepper	102949

Sheet No.	Species name	Original identification	Common name (as originally given)	MELU No.
35	<i>Drosera peltata</i> subsp. <i>auriculata</i>	<i>Drosera Planchonii</i>	Tall Sundew	102950
36	<i>Epacris paludosa</i>	<i>Epacris bawbawiensis</i>	Swamp Heath	102951
37	<i>Epacris breviflora</i>		Drumstick Heath	102952
38	<i>Epacris gunnii</i>	<i>Epacris microphylla</i>	Coral Heath	102953
39	<i>Erigeron bellidioides</i>	<i>Erigeron pappachroma</i>	Violet Fleabane	102954
40	<i>Centaurium erythraea</i> *	<i>Erythraea centaurium</i>	Austral Centaury	102955
41	<i>Eucalyptus dalrympleana</i>		Mountain Gum	102956
41a	<i>Eucalyptus dalrympleana</i>		Mountain Gum	102957
42	<i>Eucalyptus delegatensis</i>	<i>Eucalyptus gigantea</i>	Alpine Ash	102958
43	<i>Eucalyptus radiata</i>	<i>Eucalyptus Mitchelliana</i>	Mount Buffalo Sallee (Willow Gum; Weeping Sallee)	102959
44	<i>Eucalyptus pauciflora</i>	<i>Eucalyptus niphophila</i>	Snow Gum	102960
45	<i>Eucalyptus pauciflora</i>	<i>Eucalyptus pauciflora</i> ( <i>E. coriacea</i> )	Snow Gum	102961
46	<i>Eucalyptus mitchelliana</i> **	<i>Eucalyptus stellulata</i>	Mount Buffalo Sallee	102962
47	<i>Euphrasia collina</i> subsp. <i>paludosa</i>	<i>Euphrasia collina</i>	Purple Eyebright	102963
48	<i>Exocarpos cupressiformis</i>	<i>Exocarpos cupressiformis</i>	Cherry Ballart	102964
49	<i>Exocarpos strictus</i>	<i>Exocarpos stricta</i>	Pale-fruit Ballart	102965
50	<i>Gaultheria appressa</i>	<i>Gaultheria hispida</i>	Waxberry	102966
50A	<i>Gentianella muelleriana</i> subsp. <i>muelleriana</i>	<i>Gentiana diemenica</i>		102967
51	<i>Geranium antrorsum</i>	<i>Geranium sessiliflorum</i>	Rosetted Cranesbill	102968
52	<i>Gleichenia dicarpa</i>		Pouched Coral-fern	102969
53	<i>Euchiton umbricola</i>	<i>Gnaphalium alpigenum</i>	Cliff Cudweed	102970
54	<i>Goodenia elongata</i>		Lanky Goodenia	102971
55	<i>Goodenia hederacea</i> subsp. <i>alpestris</i>	<i>Goodenia hederacea</i> var. <i>alpestris</i>	Ivy Goodenia	102972
56	<i>Grevillea australis</i>		Alpine Grevillea	102973
57	<i>Grevillea alpivaga</i> **	<i>Grevillea parviflora</i>	Small-flowered Grevillea	102974
58	<i>Grevillea victoriae</i> subsp. <i>victoriae</i>	<i>Grevillea Victoriae</i>	Royal Grevillea	102975
58a	<i>Helichrysum adenophorum</i> var. <i>waddelliae</i>	<i>Helichrysum Baxteri</i>	Waddell Everlasting	102999
59	<i>Ozothamnus</i> sp. 1	<i>Helichrysum lepidophyllum</i>	Kerosene Bush	103000
60	<i>Ozothamnus secundiflorus</i>	<i>Helichrysum rosmarinifolium</i>	Cascade Everlasting	103001
61	<i>Chrysocephalum semipapposum</i>	<i>Helichrysum semipapposum</i>	Clustered Everlasting	103002
62	<i>Ozothamnus stirlingii</i>	<i>Helichrysum Stirlingii</i>	Ovens Everlasting	103003
63	<i>Leucochrysum albicans</i> subsp. <i>albicans</i> var. <i>buffaloensis</i>	<i>Helipterum albicans</i>	Hoary Sunray	103004
64	<i>Hibbertia obtusifolia</i>	<i>Hibbertia linearis</i>	Showy Guinea-flower	103005
65	<i>Hibbertia serpyllifolia</i>		Guinea-flower	103006
65a	<i>Histiopteris incisa</i>		Bat's-wing Fern	103007
66	<i>Hovea montana</i>	<i>Hovea longifolia</i> , alpine form	Long-leaf Hovea	103008
66a	<i>Melicytus dentatus</i>	<i>Hymenanchera angustifolia</i>	Tree Violet	103009
67	<i>Isotoma axillaris</i>		Rock Isotome	103010
68	<i>Lobelia surrepens</i>	<i>Isotoma fluviatilis</i>	Mud Pratia	103011
69	<i>Kunzea muelleri</i>		Yellow Kunzea	103012

Sheet No.	Species name	Original identification	Common name (as originally given)	MELU No.
70	<i>Kunzea parvifolia</i>		Violet Kunzea	103013
71	<i>Kunzea ericoides</i>	<i>Kunzea peduncularis</i>	Burgan	103014
72	<i>Lagenophora stipitata</i>	<i>Lagenophora Huegellii</i>	Blue Bottle-daisy	103020
73	<i>Leptospermum micromyrtus</i>	<i>Leptospermum myrtifolium</i>	Alpine Tea-tree	103021
74	<i>Leptospermum grandifolium</i>	<i>Leptospermum pubescens</i>	Mountain Tea-tree	103022
75	<i>Leucopogon gelidus</i>	<i>Leucopogon Hookeri</i>	Beard-heath	103023
76	<i>Aciphylla simplicifolia</i>	<i>Lilaeopsis australica</i>	Mountain Aciphyll	103024
77	<i>Lomatia fraseri</i>		Tree lomatia	103025
78	<i>Lomatia ilicifolia</i>		Holly-leaf Lomatia	103026
79	<i>Lomatia fraseri</i>	<i>Lomatia myricoides</i> ; <i>L. longifolia</i>	Tree lomatia	103027
80	<i>Rhytidosporum inconspicuum</i>	<i>Marianthus procumbens</i>	Alpine Marianth	103028
81	<i>Micrantheum hexandrum</i>		Box Micrantheum	103029
81a	<i>Microseris</i> sp. 2	<i>Microseris scapigera</i>	Yam Daisy	103030
81B	<i>Notelaea ligustrina</i>		Privet Mock-olive	103031
82	<i>Olearia erubescens</i>		Moth Daisy-bush	103032
83	<i>Olearia phlogopappa</i> var. <i>flavescens</i>	<i>Olearia Gunniana</i>	Dusty Daisy-bush	103099
84	<i>Olearia lirata</i>		Snowy Daisy-bush	103100
85	<i>Olearia phlogopappa</i> var. <i>phlogopappa</i>	<i>Olearia stellulata</i>		103101
86	<i>Oreomyrrhis eriopoda</i>	<i>Oreomyrrhis andicola</i>	Australian Carraway	103102
87	<i>Orites lancifolia</i>		Alpine Orites	103103
88	<i>Podolobium alpestre</i>	<i>Oxylobium alpestre</i>	Alpine Shaggy-pea	103104
89	<i>Podolobium alpestre</i>	<i>Oxylobium ellipticum</i>	Alpine Shaggy-pea	103105
90	<i>Pelargonium australe</i>		Austral Storksbill	103106
91	<i>Persoonia chamaepeuce</i>		Heathy Geebung	103107
92	<i>Phebalium squamulosum</i> subsp. <i>alpinum</i>	<i>Phebalium podocarpoides</i>	Forest Phebalium	103108
93	<i>Pimelea alpina</i>		Alpine Rice-flower	103109
94	<i>Pimelea linifolia</i>	<i>Pimelea involucrata</i>	Slender Rice-flower	103110
95	<i>Pimelea ligustrina</i>		Tall Rice-flower	103111
96	<i>Plantago euryphylla</i>	<i>Plantago tasmanicum</i>	Broad Plantain (Tasman Plantain)	103145
97	<i>Platylobium formosum</i>		Handsome Flat-pea	103146
98	<i>Podocarpus lawrencei</i>	<i>Podocarpus alpina</i>	Mountain Plum Pine	103147
99	<i>Polystichum proliferum</i>	<i>Polystichum aculeatum</i> var. <i>proliferum</i>	Mother Shield-fern	103148
100	<i>Poranthera microphylla</i>		Small Poranthera	103149
101	<i>Prostanthera cuneata</i>		Alpine Mint-bush	103150
102	<i>Prostanthera hirtula</i>		Hairy Mint-bush	103151
103	<i>Prostanthera lasianthos</i> var. <i>lasianthos</i>	<i>Prostanthera lasianthos</i>	Victorian Christmas-bush	103152
104	<i>Prostanthera rotundifolia</i>		Round-leaf Mint-bush	103153
105	<i>Prostanthera monticola</i>	<i>Prostanthera walteri</i>	Buffalo Mint-bush	103154
106	<i>Pteridium esculentum</i>	<i>Pteridium aquilinum</i> var. <i>esculentum</i>	Bracken	103193
107	<i>Hypolepis rugosula</i>	<i>Pteridium aquilinum</i> var. <i>lanuginosum</i>	Ruddy Ground Fern	103194
108	<i>Pultenaea mollis</i>	<i>Pultenaea hibbertioides</i>	Soft Bush-pea	103195
109	<i>Pultenaea tenella</i>		Delicate Bush-pea	103196
110	<i>Ranunculus gunnianus</i>		Gunn's Alpine Buttercup	103197
111	<i>Ranunculus graniticola</i> × <i>R. millanii</i> ( <i>R.</i> × <i>ligulatus</i> )	<i>Ranunculus hirtus</i>		103198



Sheet No.	Species name	Original identification	Common name (as originally given)	MELU No.
112	<i>Richea continentis</i>	<i>Richea Gunnii</i>	Candle Heath	103199
112a	<i>Senecio pinnatifolius</i> var. <i>alpinus</i>	<i>Senecio lautus</i>	Variable Grounsel	103200
113	<i>Scleranthus biflorus</i>		Twin-flower Knawel	103201
113a	<i>Sphagnum cristatum</i>	<i>Sphagnum cymbophyllum</i>	Sphagnum Moss	103202
114	<i>Stackhousia monogyna</i>		Creamy Stackhousia	103203
115	<i>Stellaria pungens</i>		Prickly Starwort	103204
116	<i>Stylidium montanum</i>	<i>Stylidium graminifolium</i>		103205
117	<i>Thelionema caespitosum</i>		Tufted Blue-lily	103206
118	<i>Tetradthea bauerifolia</i>	<i>Tetradthea thymifolia</i>	Heath Pink-bells	103207
119	<i>Thysanotus tuberosus</i>		Common Fringe-lily	103208
120	<i>Polyscias sambucifolia</i> subsp. 3	<i>Tieghemopana</i> × <i>sambucifolius</i>	Elderberry Panax	103209
121	<i>Platysace lanceolata</i>	<i>Trachymene lanceolata</i>	Shrubby Platysace	103210
122	<i>Viola betonicifolia</i>		Purple Violet/Showy Violet	103211
123	<i>Derwentia derwentiana</i> subsp. <i>maideniana</i>	<i>Veronica derwentia</i>	Derwent Speedwell	103321
124	<i>Derwentia nivea</i>	<i>Veronica nivea</i>	Snow Speedwell	103213
124a	<i>Wahlenbergia gloriosa</i>	<i>Wahlenbergia vincaeflora</i>	Royal Bluebell	103214
125	<i>Westringia senifolia</i>		Alpine Westringia	130215

\* Introduced species

\*\* Endemic species (to Mt Buffalo NP)

## Appendix 2. List of specimens in the Miegunyah Mt Buffalo Collection, 2006/2007.

The “MELU number” is the specimen number of sheets in the University of Melbourne Herbarium; the “Folder/Sheet number” is the folder and sheet number of specimens in the public collection sent to Mt Buffalo.

Species	Family	MELU number	Folder/Sheet number	Date Collected	Locality
<i>Adiantum aethiopicum</i>	Adiantaceae	P 103521	1/1	30 Nov 2006	Lower Rollasons Falls
<i>Cheilanthes austrotenuifolia</i>	Adiantaceae	P 103500	1/2	30 Nov 2006	Lower Eurobin Falls
<i>Aciphylla glacialis</i>	Apiaceae	D 103629	4/62	10 Jan 2007	near summit of The Horn, on south-east facing slope
<i>Aciphylla simplicifolia</i>	Apiaceae	D 103381	4/63	26 Nov 2006	track between The Reservoir and Mt Dunn
<i>Diplaspis nivis</i>	Apiaceae	D 103616	4/64	9 Jan 2007	south of track to Dicksons Falls, in gully leading into The Giants Playground
<i>Oreomyrrhis eriopoda</i>	Apiaceae	D 103404	4/65	26 Nov 2006	road to The Horn between Dingo Dell and the track to Corral Peak, on roadside
<i>Platysace lanceolata</i>	Apiaceae	D 103463	6/113	28 Nov 2006	Mackeys Lookout
<i>Trachymene humilis</i> subsp. <i>breviscapa</i>	Apiaceae	D 103622	4/66	9 Jan 2007	track to Back Wall, c. 750 m from junction with Dicksons Falls track, southeast of Cannon Hill
<i>Parsonsia brownii</i>	Apocynaceae	D 103493	11/206	30 Nov 2006	Ladies Bath Falls, Eurobin Creek
<i>Astrotricha asperifolia</i> subsp. 1	Araliaceae	D 103498	6/114	30 Nov 2006	Lower Eurobin Falls
<i>Polyscias sambucifolia</i>	Araliaceae	D 103410	6/115	27 Nov 2006	near reservoir carpark, along roadside on track to Mt Dunn
<i>Asplenium flabellifolium</i>	Aspleniaceae	P 103453	1/3	28 Nov 2006	c. 150 m along track from car park to The Horn
<i>Achillea millefolium</i>	Asteraceae	D 103424	3/36	27 Nov 2006	road to The Reservoir
<i>Brachyscome spathulata</i>	Asteraceae	D 103385	3/37	26 Nov 2006	track between The Reservoir and Mt Dunn
<i>Cassinia aculeata</i>	Asteraceae	D 103469	6/116	28 Nov 2006	Mackeys Lookout
<i>Cassinia longifolia</i>	Asteraceae	D 103464	6/117	28 Nov 2006	Mackeys Lookout
<i>Celmisia pugioniformis</i>	Asteraceae	D 103471	3/38	29 Nov 2006	Cresta Valley, boggy area on W side of track to Dicksons Falls
<i>Celmisia tomentella</i>	Asteraceae	D 103617	3/39	9 Jan 2007	south of track to Dicksons Falls, in gully leading into The Giants Playground
<i>Chrysocephalum semipapposum</i>	Asteraceae	D 103405	3/40	26 Nov 2006	road to The Horn between Dingo Dell and the track to Corral Peak, on roadside
<i>Craspedia coolaminica</i>	Asteraceae	D 103423	3/41	27 Nov 2006	road to The Reservoir
<i>Craspedia jamesii</i>	Asteraceae	D 103380	3/42	26 Nov 2006	track between The Reservoir and Mt Dunn
<i>Craspedia</i> sp. 1	Asteraceae	D 103627	3/43	9 Jan 2007	near road to The Reservoir, 700 m from reservoir carpark
<i>Craspedia</i> sp. B	Asteraceae	D 103671	3/44	9 Jan 2007	The Corral, c. 100 m past track junction, on track to Corral Peak

Species	Family	MELU number	Folder/Sheet number	Date Collected	Locality
<i>Erigeron bellidioides</i>	Asteraceae	D 103383	3/45	26 Nov 2006	track between The Reservoir and Mt Dunn
<i>Euchiton umbricola</i>	Asteraceae	D 103457	3/46	28 Nov 2006	track to The Hump, c. 100 m from carpark
<i>Helichrysum adenophorum</i> var. <i>waddelliae</i>	Asteraceae	D 103484	3/47	29 Nov 2006	rocky gully to NE of Lake Catani, following Eurobin Creek
<i>Helichrysum rutidolepis</i>	Asteraceae	D 103628	3/48	9 Jan 2007	near road to The Reservoir, c. 700 m from reservoir carpark
<i>Lagenophera stipitata</i>	Asteraceae	D 103530	3/49	1 Dec 2006	gully below Mt Buffalo Road, near The Gap
<i>Leptorhynchus squamatus</i> subsp. <i>alpinus</i>	Asteraceae	D 103568	3/50	18 Apr 2006	Grossmans Mill picnic area
<i>Leucochrysum albicans</i> subsp. <i>albicans</i> var. <i>buffaloensis</i>	Asteraceae	D 103406	3/51	26 Nov 2006	road to The Horn between Dingo Dell and the track to Corral Peak, on roadside
<i>Microseris</i> sp. 2	Asteraceae	D 103608	3/52	8 Jan 2007	Cathedral Saddle (= start of track to The Corral and The Castle)
<i>Olearia argophylla</i>	Asteraceae	D 103511	6/118	30 Nov 2006	Mt Buffalo road, between Eurobin Falls and Rollasons Falls tracks
<i>Olearia brevipedunculata</i>	Asteraceae	D 103543	6/119	2 Dec 2006	Walking track to South Buffalo
<i>Olearia erubescens</i>	Asteraceae	D 103555	6/120	3 Dec 2006	beside road to Lake Catani campground, near junction with main road
<i>Olearia lirata</i>	Asteraceae	D 103560	6/121	3 Dec 2006	near Rollasons Falls picnic area, c. 100 m down the track to Rollasons falls
<i>Olearia megalophylla</i>	Asteraceae	D 103626	6/122	9 Jan 2007	near road to The Reservoir, c700 m from reservoir carpark
<i>Olearia phlogopappa</i> var. <i>flavescens</i>	Asteraceae	D 103479	6/123	29 Nov 2006	beside track to Dicksons Falls
<i>Olearia phlogopappa</i> var. <i>phlogopappa</i>	Asteraceae	D 103636	6/124	10 Jan 2007	Mt Buffalo Road, McKinnons Corner
<i>Olearia ramulosa</i>	Asteraceae	D 103580	6/125	20 Apr 2006	Mackeys Lookout, by roadside
<i>Ozothamnus secundiflorus</i>	Asteraceae	D 103569	6/126	18 Apr 2006	Mt Buffalo Road, by roadside between Cresta Valley and track to Corral Peak
<i>Ozothamnus</i> sp. 1	Asteraceae	D 103574	6/127	19 Apr 2006	track to Corral Peak, margin of open damp grassland N of The Castle
<i>Ozothamnus stirlingii</i>	Asteraceae	D 103514	6/128	30 Nov 2006	Upper Rollasons Falls
<i>Ozothamnus thyrsoideus</i>	Asteraceae	D 103422	6/129	27 Nov 2006	road to The Reservoir
<i>Podolepis robusta</i>	Asteraceae	D 103621	3/53	9 Jan 2007	track to Back Wall, c. 750 m from junction with Dicksons Falls track, southeast of Cannon Hill
<i>Senecio gummii</i>	Asteraceae	D 103452	3/54	28 Nov 2006	c. 100 m along track from car park to The Horn
<i>Senecio hispidulus</i>	Asteraceae	D 103551	3/55	3 Dec 2006	Mt Buffalo Road, between Eurobin Falls and Rollasons Falls

Species	Family	MELU number	Folder/Sheet number	Date Collected	Locality
<i>Senecio linearifolius</i>	Asteraceae	D 103485	3/56	29 Nov 2006	Rollasons Falls picnic area
<i>Senecio pectinatus</i>	Asteraceae	D 103666	3/57	9 Jan 2007	along track to Back Wall, c. 150 m S of crossing of Jump Creek, on SE side of track
<i>Senecio pinnatifolius</i> var. <i>alpinus</i>	Asteraceae	D 103620	3/58	9 Jan 2007	The Giants Playground, track to Back Wall, near crossing of Boulder Creek (North Branch), c. 50 m north of boardwalk
<i>Senecio velleioides</i>	Asteraceae	D 103573	3/59	19 Apr 2006	track to Corral Peak
<i>Xerochrysum subundulatum</i>	Asteraceae	D 103615	3/60	9 Jan 2007	track to Dicksons Falls, c. 100 m from start of track (road)
<i>Xerochrysum viscosum</i>	Asteraceae	D 103518	3/61	30 Nov 2006	upper Rollasons Falls
<i>Pandorea pandorana</i>	Bignoniaceae	D 103670	11/207	11 Jan 2007	track to Eurobin Falls, c. 100 m from start
<i>Blechnum minus</i>	Blechnaceae	P 103508	1/4	30 Nov 2006	Mt Buffalo road, between Eurobin falls and Rollasons falls tracks
<i>Blechnum nudum</i>	Blechnaceae	P 103397	1/5	26 Nov 2006	S side of road to The Horn, near Dingo Dell
<i>Blechnum penna-marina</i>	Blechnaceae	P 103418	1/6	27 Nov 2006	on banks of Crystal Brook near The Reservoir
<i>Myosotis exarrhena</i>	Boraginaceae	D 103509	4/67	30 Nov 2006	Mt Buffalo road, between Eurobin Falls and Rollasons Falls tracks
<i>Cardamine lilacina</i>	Brassicaceae	D 103537	4/68	2 Dec 2006	walking track to South Buffalo
<i>Isotoma axillaris</i>	Campanulaceae	D 103466	4/69	28 Nov 2006	near Mackeys Lookout, along Big Walk to Marriots lookout
<i>Lobelia gelida</i>	Campanulaceae	D 103475	4/70	29 Nov 2006	Cresta Valley, boggy area over first rise, on W side of track to Dicksons falls
<i>Lobelia surrepens</i>	Campanulaceae	D 103474	4/71	29 Nov 2006	Cresta Valley, boggy area over first rise, on W side of track to Dicksons Falls
<i>Wahlenbergia ceracea</i>	Campanulaceae	D 103619	4/72	9 Jan 2007	The Giants Playground, track to Back Wall, near crossing of Boulder Creek (North Branch), c. 50 m north of boardwalk
<i>Wahlenbergia gloriosa</i>	Campanulaceae	D 103625	4/73	9 Jan 2007	near road to The Reservoir, 700 m from reservoir carpark
<i>Leycesteria formosa</i>	Caprifoliaceae	D 103497	6/130	30 Nov 2006	Lower Eurobin Falls
<i>Cerastium vulgare</i>	Caryophyllaceae	D 103455	4/74	28 Nov 2006	c. 50 m along track from car park to The Horn
<i>Scleranthus biflorus</i>	Caryophyllaceae	D 103460	4/75	28 Nov 2006	northern ski run on Cresta ski field
<i>Stellaria pungens</i>	Caryophyllaceae	D 103449	4/76	28 Nov 2006	car park at base of The Horn
<i>Hypericum perforatum</i>	Clusiaceae	D 103553	4/77	3 Dec 2006	Mt Buffalo Road, above Stakers lookout
<i>Calochlaena dubia</i>	Culcitaceae	P 103499	1/7	30 Nov 2006	Lower Eurobin Falls
<i>Bauera rubioides</i>	Cunoniaceae	D 103517	6/131	30 Nov 2006	Upper Rollasons Falls
<i>Cyathea australis</i>	Cyatheaceae	P 103495	1/8	30 Nov 2006	Ladies Bath Falls, Eurobin Creek
<i>Carex gaudichaudiana</i>	Cyperaceae	M 103476	2/18	29 Nov 2006	Cresta Valley, boggy area over first rise, on W side of track to Dicksons Falls
<i>Gahnia sieberiana</i>	Cyperaceae	M 103525	2/19	1 Dec 2006	Mackeys lookout

Species	Family	MELU number	Folder/Sheet number	Date Collected	Locality
<i>Histiopteris incisa</i>	Dennstaedtiaceae	P 103554	1/9	3 Dec 2006	gully beside track between the Chalet and The Monolith
<i>Hypolepis rugosula</i>	Dennstaedtiaceae	P 103668	1/10	10 Jan 2007	gully behind the Chalet
<i>Pteridium esculentum</i>	Dennstaedtiaceae	P 103486	1/11	29 Nov 2006	Rollasons Falls picnic area
<i>Hibbertia obtusifolia</i>	Dilleniaceae	D 103523	7/132	30 Nov 2006	track to Rollasons Falls
<i>Hibbertia serpyllifolia</i>	Dilleniaceae	D 103428	7/133	27 Nov 2006	near car park in front of the Chalet
<i>Drosera arcturi</i>	Droseraceae	D 103538	4/78	2 Dec 2006	walking track to South Buffalo
<i>Drosera peltata</i> subsp. <i>auriculata</i>	Droseraceae	D 103461	4/79	28 Nov 2006	roadside near The Chalet
<i>Polystichum proliferum</i>	Dryopteridaceae	P 103395	1/12	26 Nov 2006	S side of road to The Horn, near Dingo Dell
<i>Acrothamnus hookeri</i>	Epacridaceae	D 103630	7/134	10 Jan 2007	The Horn, c. 2/3 of the way to summit, on south slope
<i>Epacris breviflora</i>	Epacridaceae	D 103532	7/135	1 Dec 2006	gully below Mt Buffalo Road, near The Gap
<i>Epacris gunnii</i>	Epacridaceae	D 103386	7/136	26 Nov 2006	track between The Reservoir and Mt Dunn
<i>Epacris paludosa</i>	Epacridaceae	D 103390	7/137	26 Nov 2006	track between The Reservoir and Mt Dunn
<i>Leucopogon gelidus</i>	Epacridaceae	D 103398	7/138	26 Nov 2006	S side of road to The Horn, near Dingo Dell
<i>Monotoca scoparia</i>	Epacridaceae	D 103577	7/139	19 Apr 2006	The Gorge Lookout
<i>Richea continentis</i>	Epacridaceae	D 103611	7/140	8 Jan 2007	Dingo Dell, near bog on west side of road
<i>Gaultheria appressa</i>	Ericaceae	D 103631	7/141	10 Jan 2007	near track to Chalwell Galleries
<i>Micranthemum hexandrum</i>	Euphorbiaceae	D 103402	7/142	26 Nov 2006	S side of road to The Horn, near Dingo Dell
<i>Poranthera microphylla</i>	Euphorbiaceae	D 103409	4/80	27 Nov 2006	near reservoir carpark, along roadside on track to Mt Dunn
<i>Bossiaea foliosa</i>	Fabaceae	D 103415	7/143	27 Nov 2006	near reservoir carpark, along roadside on track to Mt Dunn
<i>Cytisus scoparius</i>	Fabaceae	D 103434	7/144	27 Nov 2006	walking track along E shore of Lake Catani
<i>Daviesia latifolia</i>	Fabaceae	D 103529	7/145	1 Dec 2006	near Mt Buffalo Road, just below The Gap
<i>Daviesia ulicifolia</i> var. <i>ruscifolia</i>	Fabaceae	D 103399	7/146	26 Nov 2006	S side of road to The Horn, near Dingo Dell
<i>Hovea montana</i>	Fabaceae	D 103379	7/147	26 Nov 2006	track between The Reservoir and Mt Dunn
<i>Lotus uliginosus</i>	Fabaceae	D 103624	4/81	9 Jan 2007	near road to The Reservoir, c. 700 m from reservoir carpark
<i>Platylobium formosum</i>	Fabaceae	D 103510	7/148	30 Nov 2006	Mt Buffalo Road, between Eurobin Falls and Rollasons Falls tracks
<i>Podolobium alpestre</i>	Fabaceae	D 103427	7/149	27 Nov 2006	track near Billsons lookout
<i>Pultenaea mollis</i>	Fabaceae	D 103501	7/150	30 Nov 2006	track above Lower Eurobin Falls
<i>Pultenaea tenella</i>	Fabaceae	D 103478	7/151	29 Nov 2006	gully over second rise, on NE side of track to Dicksons Falls
<i>Centaurium erythraea</i>	Gentianaceae	D 103487	4/82	29 Nov 2006	Rollasons Falls picnic area

Species	Family	MELU number	Folder/Sheet number	Date Collected	Locality
<i>Gentianella muelleriana</i> subsp. <i>muelleriana</i>	Gentianaceae	D 103572	4/83	19 Apr 2006	near Dingo Dell, in boggy area on NW side of road
<i>Geranium antrorsum</i>	Geraniaceae	D 103534	4/84	1 Dec 2006	Grossmans Mill picnic area, beside Lake Catani
<i>Geranium potentilloides</i>	Geraniaceae	D 103400	4/85	26 Nov 2006	S side of road to The Horn, near Dingo Dell
<i>Pelargonium australe</i>	Geraniaceae	D 103576	4/86	19 Apr 2006	Billsons Lookout
<i>Gleichenia dicarpa</i>	Gleicheniaceae	P 103515	1/13	30 Nov 2006	Upper Rollasons Falls
<i>Sticherus urceolatus</i>	Gleicheniaceae	P 103491	1/14	30 Nov 2006	Ladies Bath Falls, Eurobin Creek
<i>Goodenia elongata</i>	Goodeniaceae	D 103531	4/87	1 Dec 2006	gully below Mt Buffalo Road, near The Gap
<i>Goodenia hederacea</i>	Goodeniaceae	D 103417	4/88	27 Nov 2006	roadside on road from reservoir car park to Mt Dunn
<i>Scaevola hookeri</i>	Goodeniaceae	D 103542	4/89	2 Dec 2006	walking track to South Buffalo
<i>Gonocarpus micranthus</i>	Haloragaceae	D 103481	5/90	29 Nov 2006	(dry) boggy area on SW side of track to Dicksons Falls
<i>Gonocarpus montanus</i>	Haloragaceae	D 103456	5/91	28 Nov 2006	track to The Hump, c. 100 m from carpark
<i>Myriophyllum pedunculatum</i> subsp. <i>pedunculatum</i>	Haloragaceae	D 103618	5/92	9 Jan 2007	south of track to Dicksons Falls, in gully leading into The Giants Playground
<i>Luzula meridionalis</i> var. <i>flaccida</i>	Juncaceae	M 103536	2/20	2 Dec 2006	base of The Monolith
<i>Luzula modesta</i>	Juncaceae	M 103541	2/21	2 Dec 2006	walking track to South Buffalo
<i>Luzula novae-cambriae</i>	Juncaceae	M 103556	2/22	3 Dec 2006	slopes above Cresta skifield, near top of ski runs on E side
<i>Prostanthera cuneata</i>	Lamiaceae	D 103539	8/152	2 Dec 2006	walking track to South Buffalo
<i>Prostanthera lasianthus</i>	Lamiaceae	D 103494	8/153	30 Nov 2006	Ladies Bath Falls, Eurobin Creek
<i>Prostanthera monticola</i>	Lamiaceae	D 103458	8/154	28 Nov 2006	track to The Hump, c. 200 m from carpark
<i>Prostanthera rotundifolia</i>	Lamiaceae	D 103403	8/155	26 Nov 2006	road to The Horn between Dingo Dell and the track to Corral Peak, on roadside
<i>Westringia senifolia</i>	Lamiaceae	D 103413	8/156	27 Nov 2006	near reservoir carpark, along roadside on track to Mt Dunn
<i>Cassytha melantha</i>	Lauraceae	D 103667	11/208	11 Jan 2007	along Big Walk between Marriots and Mackeys lookouts
<i>Utricularia dichotoma</i>	Lentibulariaceae	D 103669	5/93	9 Jan 2007	c. 750 m from Dicksons Falls track, S along gully leading to The Giants Playground
<i>Arthropodium milleflorum</i>	Liliaceae	M 103559	2/23	3 Dec 2006	Mt Buffalo Road, near McKinnons Corner
<i>Astelia alpina</i>	Liliaceae	M 103477	2/24	29 Nov 2006	gully over second rise, on NE side of track to Dicksons Falls
<i>Burchardia umbellata</i>	Liliaceae	M 103528	2/25	1 Dec 2006	Mt Buffalo Road, roadside c. 150 m by road below Mackeys lookout
<i>Dianella admixta</i>	Liliaceae	M 103653	2/26	10 Jan 2007	Mt Buffalo Road, on roadside c. 100 m up hill from The Font
<i>Dianella tasmanica</i>	Liliaceae	M 103633	2/27	10 Jan 2007	near track to Chalwell Galleries

Species	Family	MELU number	Folder/Sheet number	Date Collected	Locality
<i>Herpolirion novae-zelandiae</i>	Liliaceae	M 103480	2/28	29 Nov 2006	(dry) boggy area on SW side of track to Dicksons Falls
<i>Thelionema caespitosum</i>	Liliaceae	M 103634	2/29	10 Jan 2007	hillside north of Hospice Plain, near road crossing over Crystal Brook
<i>Thysanotus tuberosus</i>	Liliaceae	M 103502	2/30	30 Nov 2006	track above Lower Eurobin Falls
<i>Logania albiflora</i>	Loganiaceae	D 103505	8/157	30 Nov 2006	track above Lower Eurobin Falls
<i>Lycopodium fastigiatum</i>	Lycopodiaceae	P 103540	1/16	2 Dec 2006	walking track to South Buffalo
<i>Acacia alpina</i>	Mimosaceae	D 103535	8/158	2 Dec 2006	base of The Monolith
<i>Acacia dallachiana</i>	Mimosaceae	D 103512	11/213	30 Nov 2006	upper Rollasons Falls
<i>Acacia dealbata</i>	Mimosaceae	D 103433	11/214	27 Nov 2006	walking track along E shore of Lake Catani
<i>Acacia melanoxylon</i>	Mimosaceae	D 103489	11/215	30 Nov 2006	Ladies Bath Falls, Eurobin Creek
<i>Acacia obliquinervia</i>	Mimosaceae	D 103429	8/159	27 Nov 2006	Lake Catani, day visitor area
<i>Acacia phlebophylla</i>	Mimosaceae	D 103467	8/160	28 Nov 2006	near Mackeys Lookout, along Big Walk to Marriots lookout
<i>Acacia pravissima</i>	Mimosaceae	D 103552	8/161	3 Dec 2006	Mt Buffalo Road, c. 150 m by road below Mackeys lookout
<i>Hedycarya angustifolia</i>	Monimiaceae	D 103488	11/216	30 Nov 2006	Eurobin Falls picnic area
<i>Babingtonia crenulata</i>	Myrtaceae	D 103650	9/162	10 Jan 2007	Mt Buffalo Rd c. 400 m up hill from Stakers Lookout
<i>Baeckea gunniana</i>	Myrtaceae	D 103613	9/163	8 Jan 2007	Dingo Dell, on west side of road
<i>Callistemon pallidus</i>	Myrtaceae	D 103652	9/164	10 Jan 2007	near Mackeys Lookout, along Big Walk to Marriots lookout
<i>Callistemon pityoides</i>	Myrtaceae	D 103544	9/165	2 Dec 2006	walking track to South Buffalo
<i>Calytrix tetragona</i>	Myrtaceae	D 103468	9/166	28 Nov 2006	Mackeys Lookout
<i>Eucalyptus chapmaniana</i>	Myrtaceae	D 103656	11/217	11 Jan 2007	Mt Buffalo Road, Stakers Lookout
<i>Eucalyptus dalrympleana</i>	Myrtaceae	D 103578	11/218	19 Apr 2006	near The Gorge Lookout
<i>Eucalyptus delegatensis</i>	Myrtaceae	D 103546	11/219	2 Dec 2006	track between The Monolith and the Chalet
<i>Eucalyptus dives</i>	Myrtaceae	D 103581	11/220	20 Apr 2006	Mt Buffalo road, by roadside near first hairpin bend below Mackeys Lookout
<i>Eucalyptus mannifera</i>	Myrtaceae	D 103654	11/221	11 Jan 2007	Mt Buffalo Road, above Rollasons Falls picnic area, c. 100 m up hill from where The Big Walk crosses the road
<i>Eucalyptus mitchelliana</i>	Myrtaceae	D 103570	11/222	19 Apr 2006	near "The Oval"
<i>Eucalyptus nortonii</i>	Myrtaceae	D 103663	11/223	11 Jan 2007	among rocks above Eurobin Ck, on true left bank, between Upper and Lower Eurobin Falls
<i>Eucalyptus pauciflora</i>	Myrtaceae	D 103609	11/224	8 Jan 2007	carpark below The Horn

Species	Family	MELU number	Folder/Sheet number	Date Collected	Locality
<i>Eucalyptus radiata</i>	Myrtaceae	D 103655	11/225	11 Jan 2007	Mt Buffalo Road, above Rollasons Falls picnic area, c. 100 m up hill from where The Big Walk crosses the road
<i>Euryomyrtus ramosissima</i>	Myrtaceae	D 103393	9/167	26 Nov 2006	S side of road to The Horn, near Dingo Dell
<i>Kunzea ericoides</i>	Myrtaceae	D 103462	9/168	28 Nov 2006	Mackeys Lookout
<i>Kunzea muelleri</i>	Myrtaceae	D 103401	9/169	26 Nov 2006	S side of road to The Horn, near Dingo Dell
<i>Kunzea parvifolia</i>	Myrtaceae	D 103425	9/170	27 Nov 2006	Billsons lookout
<i>Leptospermum brevipes</i>	Myrtaceae	D 103492	9/171	30 Nov 2006	Ladies Bath Falls, Eurobin Creek
<i>Leptospermum continentale</i>	Myrtaceae	D 103526	9/172	1 Dec 2006	Mt Buffalo Road, roadside about 150 m by road below Mackeys lookout
<i>Leptospermum grandifolium</i>	Myrtaceae	D 103610	9/173	8 Jan 2007	Dingo Dell, on east side of road near creek crossing
<i>Leptospermum micromyrtus</i>	Myrtaceae	D 103575	9/174	19 Apr 2006	Billsons Lookout
<i>Leptospermum myrtifolium</i>	Myrtaceae	D 103432	9/175	27 Nov 2006	walking track along E shore of Lake Catani
<i>Notelaea ligustrina</i>	Oleaceae	D 103635	11/226	10 Jan 2007	near (below) The Gap, on slope below Mt Buffalo Road
<i>Epilobium gunnianum</i>	Onagraceae	D 103658	5/94	11 Jan 2007	Hospice Plain, on banks of The Crystal Brook
<i>Caladenia alpina</i>	Orchidaceae	M 103483	2/31	29 Nov 2006	Lake Catani, lakeside track N of bridge near weir
<i>Thelymitra cyanea</i>	Orchidaceae	M 103664	2/32	9 Jan 2007	S of Dicksons Falls track, in gully leading to The Giants Playground, c. 400 m from track
<i>Thelymitra simulata</i>	Orchidaceae	M 103665	2/33	27 Nov 2006	Haunted Gully Lookout
<i>Todea barbara</i>	Osmundaceae	P 103490	1/15	30 Nov 2006	Ladies Bath Falls, Eurobin Creek
<i>Billardiera macrantha</i>	Pittosporaceae	D 103513	11/209	30 Nov 2006	upper Rollasons Falls
<i>Billardiera mutabilis</i>	Pittosporaceae	D 103661	11/210	11 Jan 2007	near lookout at Eurobin Falls
<i>Rhytidosporum inconspicuum</i>	Pittosporaceae	D 103657	9/176	11 Jan 2007	plain immediately behind (west) of ranger's station, near banks of The Crystal Brook
<i>Plantago euryphylla</i>	Plantaginaceae	D 103623	5/95	9 Jan 2007	Cathedral Saddle (start of track to The Corral and The Castle)
<i>Podocarpus lawrencei</i>	Podocarpaceae	G 103557	6/112	3 Dec 2006	slopes above Cresta skifield, above top of Gully Poma ski tow on E side
<i>Comesperma retusum</i>	Polygalaceae	D 103612	9/177	8 Jan 2007	Dingo Dell, west side of road
<i>Comesperma volubile</i>	Polygalaceae	D 103548	11/211	3 Dec 2006	Eurobin Falls track, Ladies Bath Falls
<i>Acetosella vulgaris</i>	Polygonaceae	D 103389	5/96	26 Nov 2006	track between The Reservoir and Mt Dunn
<i>Grevillea alpina</i>	Proteaceae	D 103519	10/178	30 Nov 2006	Upper Rollasons Falls
<i>Grevillea alpivaga</i>	Proteaceae	D 103527	10/179	1 Dec 2006	Mt Buffalo Road, roadside about 150 m by road below Mackeys lookout
<i>Grevillea australis</i>	Proteaceae	D 103482	10/180	29 Nov 2006	side of track to Dicksons Falls
<i>Grevillea victoriae</i>	Proteaceae	D 103571	10/181	19 Apr 2006	near Dingo Dell, on slope above creek on SE side of road



Species	Family	MELU number	Folder/Sheet number	Date Collected	Locality
<i>Lomatia fraseri</i>	Proteaceae	D 103632	10/182	10 Jan 2007	near track to Chalwell Galleries
<i>Lomatia ilicifolia</i>	Proteaceae	D 103659	10/183	11 Jan 2007	beside Mt Buffalo Rd, near first hairpin bend downhill from Mackeys Lookout
<i>Lomatia myricoides</i>	Proteaceae	D 103496	10/184	30 Nov 2006	lower Eurobin Falls
<i>Orites lancifolia</i>	Proteaceae	D 103435	10/185	27 Nov 2006	underneath footbridge at NE end of Lake Catani, just below weir
<i>Persoonia chamaepeuce</i>	Proteaceae	D 103522	10/186	30 Nov 2006	track to Rollasons Falls, at junction between track to upper and lower falls
<i>Clematis aristata</i>	Ranunculaceae	D 103533	11/212	1 Dec 2006	Mt Buffalo Road, c. 200 m by road below The Gap
<i>Psychrophila introloba</i>	Ranunculaceae	D 103558	5/97	3 Dec 2006	Cresta skifield, near base of Gully Poma ski tow, in front of ski buildings
<i>Ranunculus graniticola</i>	Ranunculaceae	D 103384	5/98	26 Nov 2006	track between The Reservoir and Mt Dunn
<i>Ranunculus gunnianus</i>	Ranunculaceae	D 103545	5/99	2 Dec 2006	Cresta skifield, under main ski tow
<i>Ranunculus millanii</i>	Ranunculaceae	D 103473	5/100	29 Nov 2006	Cresta Valley, boggy area over first rise, on W side of track to Dicksons Falls
<i>Empodisma minus</i>	Restionaceae	M 103387	2/34	26 Nov 2006	track between The Reservoir and Mt Dunn
<i>Pomaderris lanigera</i>	Rhamnaceae	D 103504	10/187	30 Nov 2006	track above Lower Eurobin Falls
<i>Spyridium parvifolium</i>	Rhamnaceae	D 103503	10/188	30 Nov 2006	track above Lower Eurobin Falls
<i>Acaena novae-zelandiae</i>	Rosaceae	D 103450	5/101	28 Nov 2006	car park at base of The Horn
<i>Rubus parvifolius</i>	Rosaceae	D 103508	10/189	30 Nov 2006	Eurobin Falls picnic area
<i>Asperula euryphylla</i> var. <i>euryphylla</i>	Rubiaceae	D 103396	5/102	26 Nov 2006	S side of road to The Horn, near Dingo Dell
<i>Asperula gunnii</i>	Rubiaceae	D 103382	5/103	26 Nov 2006	track between The Reservoir and Mt Dunn
<i>Asperula pusilla</i>	Rubiaceae	D 103388	5/104	26 Nov 2006	track between The Reservoir and Mt Dunn
<i>Coprosma hirtella</i>	Rubiaceae	D 103412	10/190	27 Nov 2006	near reservoir carpark, along roadside on track to Mt Dunn
<i>Coprosma quadrifida</i>	Rubiaceae	D 103662	10/191	11 Jan 2007	near lookout at lower Eurobin Falls
<i>Galium aparine</i>	Rubiaceae	D 103524	5/105	1 Dec 2006	Mt Buffalo road, between Eurobin Falls picnic area and Rollasons Falls picnic area
<i>Asterolasia asteriscophora</i>	Rutaceae	D 103547	10/192	3 Dec 2006	Eurobin Falls track, between lower and upper falls
<i>Boronia algida</i>	Rutaceae	D 103419	10/193	27 Nov 2006	roadside near reservoir car park
<i>Phebalium squamulosum</i> subsp. <i>alpinum</i>	Rutaceae	D 103392	10/194	26 Nov 2006	roadside just E of The Reservoir
<i>Exocarpos cupressiformis</i>	Santalaceae	D 103651	11/227	10 Jan 2007	Mt Buffalo Rd c. 500 m up hill from Stakers Lookout
<i>Dodonaea viscosa</i> subsp. <i>cuneata</i>	Sapindaceae	D 103470	10/195	28 Nov 2006	near Mackeys Lookout, c. 50 m along track to Marriots lookout
<i>Derwentia derwentiana</i>	Scrophulariaceae	D 103411	10/196	27 Nov 2006	near reservoir carpark, along roadside on track to Mt Dunn

Species	Family	MELU number	Folder/Sheet number	Date Collected	Locality
<i>Derwentia nivea</i>	Scrophulariaceae	D 103421	10/197	27 Nov 2006	road to The Reservoir
<i>Euphrasia collina</i>	Scrophulariaceae	D 103451	10/198	28 Nov 2006	c. 50 m along track from car park to The Horn
<i>Sphagnum cristatum</i>	Sphagnaceae	B 103614	1/17	8 Jan 2007	Dingo Dell, bog on west side of road
<i>Stackhousia monogyna</i>	Stackhousiaceae	D 103408	5/106	27 Nov 2006	near reservoir carpark, along roadside on track to Mt Dunn
<i>Stackhousia viminea</i>	Stackhousiaceae	D 103506	5/107	30 Nov 2006	track above Lower Eurobin Falls
<i>Stylidium armeria</i>	Stylidiaceae	D 103550	5/108	3 Dec 2006	Mt Buffalo Road, between Eurobin Falls and Rollasons Falls
<i>Stylidium montanum</i>	Stylidiaceae	D 103430	5/109	27 Nov 2006	walking track along E shore of Lake Catani
<i>Pimelea alpina</i>	Thymelaeaceae	D 103391	10/199	26 Nov 2006	track to Mt Dunn, boggy area on W side of track near The Reservoir
<i>Pimelea axiflora</i>	Thymelaeaceae	D 103660	10/200	11 Jan 2007	beside Mt Buffalo Rd, between Eurobin Falls and Rollasons Falls
<i>Pimelea ligustrina</i> subsp. <i>ciliata</i>	Thymelaeaceae	D 103394	10/201	26 Dec 2006	S side of road to The Horn, near Dingo Dell
<i>Pimelea linifolia</i>	Thymelaeaceae	D 103420	10/202	27 Nov 2006	road to The Reservoir
<i>Tetradlea bauerifolia</i>	Tremandraceae	D 103426	10/203	27 Nov 2006	track near Billsons lookout
<i>Meliccytus</i> sp. aff. <i>dentatus</i> (snowfields)	Violaceae	D 103414	10/204	27 Nov 2006	near reservoir carpark, along roadside on track to Mt Dunn
<i>Viola betonicifolia</i>	Violaceae	D 103378	5/110	26 Nov 2006	track between The Reservoir and Mt Dunn
<i>Viola hederacea</i>	Violaceae	D 103407	5/111	27 Nov 2006	near reservoir carpark, along roadside on track to Mt Dunn
<i>Tasmannia xerophila</i>	Winteraceae	D 103459	10/205	28 Nov 2006	track to The Hump, at turn off of track to The Cathedral
<i>Lomandra longifolia</i>	Xanthorrhoeaceae	M 103431	2/35	27 Nov 2006	walking track along E shore of Lake Catani

### Appendix 3. List of vascular plant species recorded in Mt Buffalo National Park.

Species name	Family	Common name	Comments
<b>Pteridophyta</b>			
<i>Adiantum aethiopicum</i>	Adiantaceae	Common Maidenhair	
<i>Cheilanthes austrotenuifolia</i>	Adiantaceae	Rock Fern	
<i>Cheilanthes distans</i>	Adiantaceae	Bristly Cloak-fern	new, based on MEL records
<i>Cheilanthes sieberi</i> subsp. <i>sieberi</i>	Adiantaceae	Narrow Rock-fern	new, based on MEL records
<i>Asplenium flabellifolium</i>	Aspleniaceae	Necklace Fern	
<i>Asplenium trichomanes</i>	Aspleniaceae	Common Spleenwort	MEL records historical but with locality info. included, so probably OK
<i>Pleurosorus rutifolius</i>	Aspleniaceae	Blanket Fern	
<i>Blechnum cartilagineum</i>	Blechnaceae	Gristle-fern	new, based on MEL records
<i>Blechnum chambersii</i>	Blechnaceae	Lance Water-fern	no recent records
<i>Blechnum minus</i>	Blechnaceae	Soft Water-fern	
<i>Blechnum nudum</i>	Blechnaceae	Fishbone Water-fern	
<i>Blechnum nudum</i>	Blechnaceae	Strap Water-fern	
<i>Blechnum penna-marina</i>	Blechnaceae	Alpine Water-fern	
<i>Blechnum watsii</i>	Blechnaceae	Hard Water-fern	no recent records
<i>Cyathea australis</i>	Cyatheaceae	Hard Tree-fern	new, collected 2006
<i>Histiopteris incisa</i>	Dennstaedtiaceae	Bat's-wing Fern	
<i>Hypolepis amaurorachis</i>	Dennstaedtiaceae	Austral Ground-fern	new, based on MEL records
<i>Hypolepis rugosula</i>	Dennstaedtiaceae	Ruddy Ground-fern	spelling corrected
<i>Pteridium esculentum</i>	Dennstaedtiaceae	Bracken	
<i>Calochlaena dubia</i>	Dicksoniaceae	Common Ground-fern	
<i>Dicksonia antarctica</i>	Dicksoniaceae	Soft Tree-fern	
<i>Cyrtomium falcatum</i> *	Dryopteridiaceae	Holly Fern	
<i>Polystichum proliferum</i>	Dryopteridiaceae	Mother Shield-fern	
<i>Gleichenia dicarpa</i>	Gleicheniaceae	Pouched Coral-fern	
<i>Gleichenia microphylla</i>	Gleicheniaceae	Scrambling Coral-fern	
<i>Sticherus urceolatus</i>	Gleicheniaceae	Silky Fan-fern	update
<i>Grammitis billardierei</i>	Grammitidaceae	Common Finger-fern	
<i>Hymenophyllum cupressiforme</i>	Hymenophyllaceae	Common Filmy-fern	
<i>Huperzia australiana</i>	Lycopodiaceae	Fir Clubmoss	
<i>Lycopodium fastigiatum</i>	Lycopodiaceae	Mountain Clubmoss	
<i>Todea barbara</i>	Osmundaceae	Austral King-fern	new, collected 2007
<i>Pteris tremula</i>	Pteridiaceae	Tender Brake	

Species name	Family	Common name	Comments
<b>Gymnospermae</b>			
<i>Callitris endlicheri</i>	Cupressaceae	Black Cypress-pine	new, based on MEL records
<i>Podocarpus lawrencei</i>	Podocarpaceae	Mountain Plum Pine	
<b>Monocotyledonae</b>			
<i>Baumea gunnii</i>	Cyperaceae	Slender Twig-rush	MEL record historical only
<i>Carex appressa</i>	Cyperaceae	Tall Sedge	
<i>Carex blakei</i>	Cyperaceae	Sedge	
<i>Carex breviculmis</i>	Cyperaceae		
<i>Carex canescens</i>	Cyperaceae	Short sedge	
<i>Carex gaudichaudiana</i>	Cyperaceae		
<i>Carex hebes</i>	Cyperaceae		
<i>Carex incomitata</i>	Cyperaceae		new, based on MEL records
<i>Carex jackiana</i>	Cyperaceae		
<i>Carex ovalis</i> *	Cyperaceae		new, based on MEL records
<i>Carex polyantha</i>	Cyperaceae		
<i>Cyperus eragrostis</i> *	Cyperaceae		new, based on MEL records
<i>Cyperus lucidus</i>	Cyperaceae	Leafy Flat-sedge	
<i>Cyperus sanguinolentus</i>	Cyperaceae		the only record is from Mueller (1853), locality "Buffalo Mountains"
<i>Eleocharis sphacelata</i>	Cyperaceae	Tall Spike-rush	
<i>Gahnia sieberiana</i>	Cyperaceae	Red-fruit Saw-sedge	
<i>Isolepis aucklandica</i>	Cyperaceae		
<i>Isolepis crassiuscula</i>	Cyperaceae	Alpine Club-rush	
<i>Isolepis fluitans</i> var. <i>fluitans</i>	Cyperaceae	Floating Club-rush	new, based on MEL records
<i>Isolepis habra</i>	Cyperaceae		
<i>Isolepis inundata</i>	Cyperaceae	Swamp Club-rush	
<i>Isolepis marginata</i>	Cyperaceae		new, based on MEL records
<i>Isolepis montivaga</i>	Cyperaceae		
<i>Isolepis producta</i>	Cyperaceae		new, based on MEL records
<i>Isolepis subtilissima</i>	Cyperaceae		
<i>Lepidosperma gunnii</i>	Cyperaceae	Slender Sword-sedge	
<i>Lepidosperma laterale</i>	Cyperaceae	Variable Sword-sedge	new, based on MEL records
<i>Oreobolus distichus</i>	Cyperaceae	Fan Tuft-rush	
<i>Oreobolus oxycarpus</i> subsp. <i>oxycarpus</i>	Cyperaceae	Tuft Rush	
<i>Schoenus apogon</i>	Cyperaceae	Common Bog-rush	new, based on MEL records
<i>Schoenus calyptratus</i>	Cyperaceae	Alpine Bog-rush	
<i>Schoenus maschalinus</i>	Cyperaceae	Leafy Bog-rush	new, based on MEL records
<i>Uncinia flaccida</i>	Cyperaceae	Mountain Hook-sedge	
<i>Eriocaulon scariosum</i>	Eriocaulaceae	Pale pipewort	new, based on MEL records
<i>Libertia pulchella</i>	Iridaceae	Pretty Grass-flag	
<i>Sisyrinchium iridifolium</i> *	Iridaceae	Blue Pig-root	new, based on photo by R. Briggs
<i>Juncus alexandri</i> subsp. <i>alexandri</i>	Juncaceae		new, based on MEL records
<i>Juncus articulatus</i> *	Juncaceae	Jointed Rush	
<i>Juncus australis</i>	Juncaceae	Austral Rush	resembles <i>J. gregiflorus</i>
<i>Juncus bufonius</i>	Juncaceae	Toad Rush	
<i>Juncus effusus</i> *	Juncaceae	Soft Rush	

Species name	Family	Common name	Comments
<i>Juncus fockeii</i>	Juncaceae	Slender Joint-leaf Rush	new, based on MEL records
<i>Juncus gregiflorus</i>	Juncaceae		new, based on MEL records
<i>Juncus pauciflorus</i>	Juncaceae	Loose-flower Rush	may be confused with <i>J. alexandri</i>
<i>Juncus planifolius</i>	Juncaceae	Broad-leaf Rush	
<i>Juncus prismatocarpus</i>	Juncaceae	Branching Rush	
<i>Juncus sandwithii</i>	Juncaceae	Alpine Joint-leaf Rush	
<i>Juncus sarophorus</i>	Juncaceae	Broom Rush	new, based on MEL records
<i>Juncus tenuis</i> *	Juncaceae	Slender Rush	
<i>Luzula meridionalis</i> var. <i>densiflora</i>	Juncaceae	Common Woodrush	
<i>Luzula meridionalis</i> var. <i>flaccida</i>	Juncaceae		new variety
<i>Luzula modesta</i>	Juncaceae	Southern Woodrush	
<i>Luzula novae-cembraie</i>	Juncaceae	Coarse Woodrush	
<i>Arthropodium milleflorum</i>	Liliaceae	Pale Vanilla-lily	
<i>Arthropodium</i> sp. 2	Liliaceae		
<i>Astelia alpina</i> var. <i>novae-hollandiae</i>	Liliaceae	Silver Astelia	
<i>Burchardia umbellata</i>	Liliaceae	Milkmaids	
<i>Caesia alpina</i>	Liliaceae	Alpine Grass-lily	
<i>Dianella admixta</i>	Liliaceae		name updated from <i>Dianella revoluta</i> (Census Vict. Vasc. Pl. edn 7.)
<i>Dianella tasmanica</i>	Liliaceae	Tasman Flax-lily	
<i>Herpolirion novae-zealandiae</i>	Liliaceae	Sky Lily	
<i>Thelionema caespitosum</i>	Liliaceae	Tufted Blue-lily	
<i>Thysanotus tuberosus</i>	Liliaceae	Common Fringe-lily	
<i>Tricoryne elatior</i>	Liliaceae	Yellow Rush-lily	no recent records
<i>Wurmbea dioica</i> subsp. <i>dioica</i>	Liliaceae	Early Nancy	new, based on MEL records
<i>Arthrochilus huntianus</i>	Orchidaceae	Elbow Orchid	
<i>Caladenia alpina</i>	Orchidaceae	Mountain Caladenia	
<i>Caladenia carnea</i>	Orchidaceae	Pink Fingers	
<i>Caladenia gracilis</i>	Orchidaceae	Musky Caladenia	
<i>Caladenia phaeoclavia</i>	Orchidaceae	Green-comb Spider-orchid	
<i>Calochilus robertsonii</i>	Orchidaceae	Purplish Beard-orchid	
<i>Calochilus campestris</i>	Orchidaceae	Copper Beard-orchid	new, based on MEL records
<i>Chiloglottis cornuta</i>	Orchidaceae	Green Bird-orchid	
<i>Chiloglottis valida</i>	Orchidaceae	Common Bird-orchid	
<i>Corybas diemenicus</i>	Orchidaceae	Veined Helmet-orchid	new, based on MEL records
<i>Dipodium roseum</i>	Orchidaceae	Rosy Hyacinth-orchid	MEL record historical only
<i>Diuris monticola</i>	Orchidaceae		updated from <i>Diuris lanceolata</i>
<i>Diuris pardina</i>	Orchidaceae	Leopard Orchid	
<i>Diuris sulphurea</i>	Orchidaceae	Tiger Orchid	
<i>Gastrodia procera</i>	Orchidaceae	Tall Potato-orchid	
<i>Gastrodia sesamoides</i>	Orchidaceae	Cinnamon Bells	
<i>Corunastylis arrecta</i>	Orchidaceae		replaces <i>Corunastylis archeri</i> (which was an update of <i>Prasophyllum archeri</i> ) as a more likely species

Species name	Family	Common name	Comments
<i>Prasophyllum alpestre</i>	Orchidaceae		new, based on MEL records
<i>Prasophyllum brevilabre</i>	Orchidaceae	Short-lip Leek-orchid	
<i>Prasophyllum sphacelatum</i>	Orchidaceae		added based on N. Walsh pers. comm. 2006
<i>Prasophyllum</i> sp. aff. <i>odoratum</i> 11	Orchidaceae	Highland Leek-orchid	added based on N. Walsh pers. comm. 2006. Replaces <i>P. patens</i> and <i>P. odoratum</i> .
<i>Prasophyllum suttonii</i>	Orchidaceae	Mauve Leek-orchid	
<i>Prasophyllum tadgellianum</i>	Orchidaceae	Alpine Leek-orchid	
<i>Pterostylis alpina</i>	Orchidaceae	Mountain Greenhood	no recent records, no voucher. noted only by Willis with a ? and not seen by him, but by R.K.Rowe. Could refer to <i>Pterostylis monticola</i> (J. Jeanes, pers. comm. 2007)
<i>Pterostylis curta</i>	Orchidaceae	Blunt Greenhood	
<i>Pterostylis foliata</i>	Orchidaceae	Slender Greenhood	
<i>Pterostylis</i> sp. aff. <i>melagramma</i> (Montane 'pale green flowers')	Orchidaceae		updated from <i>P. longifolia</i> . (Census Vict. Vasc. Pl. edn 7.)
<i>Pterostylis parviflora</i>	Orchidaceae	Tiny Greenhood	
<i>Pterostylis</i> sp. aff. <i>parviflora</i>	Orchidaceae		the status of this taxon is uncertain, and needs further study (J. Jeanes. Pers. Comm. 2007)
<i>Thelymitra arenaria</i>	Orchidaceae	Forest Sun-orchid	new, based on MEL records
<i>Thelymitra cyanea</i>	Orchidaceae	Veined Sun-orchid	
<i>Thelymitra media</i>	Orchidaceae	Tall Sun-orchid	
<i>Thelymitra</i> sp. aff. <i>megcalyptra</i> (Alpine)	Orchidaceae		updated from <i>Thelymitra nuda</i> (Census Vict. Vasc. Pl. edn 7.)
<i>Thelymitra simulata</i>	Orchidaceae	Graceful Sun-orchid	new, photographed Jan 2007
<i>Agrostis australiensis</i>	Poaceae	Tiny Bent	
<i>Agrostis cappillaris</i> *	Poaceae	Brown-top Bent	
<i>Agrostis gigantea</i> *	Poaceae	Red-top Bent	new, based on MEL records
<i>Agrostis muelleriana</i>	Poaceae	Mueller's Bent	
<i>Agrostis parviflora</i>	Poaceae	Small-flower Bent	
<i>Agrostis propinqua</i>	Poaceae		new, based on MEL records
<i>Agrostis venusta</i>	Poaceae	Misty Bent	
<i>Aira caryophylla</i> *	Poaceae	Silver Hairy grass	
<i>Aira cupaniana</i> *	Poaceae		new, based on MEL records
<i>Anthoxanthum odoratum</i> *	Poaceae	Sweet Vernal-grass	
<i>Australopyrum velutinum</i>	Poaceae	Mountain Wheat-grass	
<i>Austrodanthonia alpicola</i>	Poaceae	Crag Wallaby-grass	
<i>Austrodanthonia eriantha</i>	Poaceae	Wallaby Grass	
<i>Austrodanthonia oreophila</i>	Poaceae		new, based on MEL records
<i>Austrodanthonia penicillata</i>	Poaceae	Slender Wallaby-grass	
<i>Austrodanthonia pilosa</i>	Poaceae	Velvet Wallaby-grass	
<i>Austrodanthonia tenuior</i>	Poaceae	Wallaby Grass	
<i>Austrofestuca hookeriana</i>	Poaceae	Hooker Fesue	
<i>Austrostipa nivicola</i>	Poaceae	Alpine Spear-grass	
<i>Austrostipa rudis</i> subsp. <i>nervosa</i>	Poaceae		new, based on MEL records
<i>Austrostipa semibarbata</i>	Poaceae	Fibrous Spear-grass	
<i>Briza maxima</i> *	Poaceae	Large Quaking-grass	new, based on MEL records
<i>Briza minor</i> *	Poaceae	Lesser Quaking-grass	

Species name	Family	Common name	Comments
<i>Bromus diandrus</i> *	Poaceae	Great Brome	
<i>Bromus hordeaceus</i> *	Poaceae	Soft Brome	
<i>Bromus lithobius</i> *	Poaceae	Chilean Brome	
<i>Cynosurus cristatus</i> *	Poaceae	Crested Dog's-tail	new, based on MEL records
<i>Cynosurus echinatus</i> *	Poaceae	Rough Dog's tail	new, based on MEL records
<i>Dactylis glomeratus</i> *	Poaceae	Cocksfoot	
<i>Deyeuxia brachyanthera</i>	Poaceae	Short Bent-grass	
<i>Deyeuxia carinata</i>	Poaceae	Keeled Bent-grass	
<i>Deyeuxia crassiuscula</i>	Poaceae	Thick Bent-grass	no recent records
<i>Deyeuxia frigida</i>	Poaceae		new, based on MEL records
<i>Deyeuxia innominata</i>	Poaceae		
<i>Deyeuxia monticola</i>	Poaceae	Mountain Bent-grass	
<i>Deyeuxia quadriseta</i>	Poaceae	Reed Bent-grass	
<i>Deyeuxia rodwayi</i>	Poaceae		new, based on MEL records
<i>Deyeuxia scaberula</i>	Poaceae	Rough Bent-grass	
<i>Dichelachne hirtella</i>	Poaceae		new, based on MEL records
<i>Dichelachne rara</i>	Poaceae	Short-hair Plume-grass	
<i>Echinopogon ovatus</i>	Poaceae	Hedgehog Grass	
<i>Elymus scaber</i>	Poaceae	Common Wheat-grass	
<i>Eragrostis brownii</i>	Poaceae	Common Love-grass	new, based on MEL records
<i>Festuca muelleri</i>	Poaceae	Alpine Fescue	
<i>Hierochloa redolens</i>	Poaceae	Wsweet Holy-grass	
<i>Holcus lanatus</i> *	Poaceae	Yorkshire Fog	
<i>Imperata cylindrica</i>	Poaceae	Blady Grass	new, based on MEL records
<i>Joycea pallida</i>	Poaceae	Silvertop Wallaby-grass	
<i>Lachnagrostis aemula</i>	Poaceae	Purplish Bent	updated from <i>Agrostis aemula</i>
<i>Lachnagrostis filiformis</i>	Poaceae	Common Blown-grass	updated from <i>Agrostis avenacea</i>
<i>Lachnagrostis meionectes</i>	Poaceae	Alpine Bent	updated from <i>Agrostis meionectes</i>
<i>Lolium perenne</i> *	Poaceae	Perennial Rye-grass	
<i>Microlaena stipoides</i>	Poaceae	Weeping Grass	
<i>Paspalum dilatatum</i> *	Poaceae	Paspalum	new, based on MEL records
<i>Poa annua</i> *	Poaceae	Annual Meadow-grass	
<i>Poa clivicola</i>	Poaceae	Fine-leaved Snow-grass	
<i>Poa costiniana</i>	Poaceae	Bog Snow-grass	
<i>Poa fawcettiae</i>	Poaceae	Horny Snow-grass	
<i>Poa helmsii</i>	Poaceae	Tall Tussock grass	
<i>Poa hothamensis</i>	Poaceae	Ledge Grass	
<i>Poa labillardierei</i>	Poaceae	Prickly Tussock grass	
<i>Poa phillipsiana</i>	Poaceae	Blue Snow-grass	
<i>Poa pratensis</i> *	Poaceae	Kentuky Blue-grass	
<i>Poa sieberiana</i>	Poaceae	Grey Tussock-grass	
<i>Rytidosperma nivicola</i>	Poaceae	Snow Wallaby-grass	spelling corrected from <i>R. niviculum</i>
<i>Rytidosperma nudiflorum</i>	Poaceae		new
<i>Tetrarrhena turfosa</i>	Poaceae	Alpine Wallaby-grass	
<i>Themeda triandra</i>	Poaceae	Kangaroo Grass	new, based on MEL records
<i>Trisetum spicatum</i>	Poaceae	Bristle-grass	
<i>Vulpia bromoides</i>	Poaceae	Squirrel-tail Fescue	
<i>Vulpia myuros</i> forma <i>myuros</i>	Poaceae	Rat's-tail Fescue	new, based on MEL records
<i>Empodisma minus</i>	Restionaceae	Spreading Rope-rush	

Species name	Family	Common name	Comments
<i>Lomandra filiformis</i> var. <i>coriacea</i>	Xanthorrhoeaceae	Wattle Mat-rush	
<i>Lomandra longifolia</i> subsp. <i>exilis</i>	Xanthorrhoeaceae	Cluster-headed Mat-rush	
<i>Lomandra multiflora</i>	Xanthorrhoeaceae	many-flowered Mat-rush	
<b>Dicotyledonae</b>			
<i>Aciphylla glacialis</i>	Apiaceae	Snow Aciphyll	
<i>Aciphylla simplicifolia</i>	Apiaceae	Mountain Aciphyll	
<i>Centella cordifolia</i>	Apiaceae	Centella	new, based on MEL records
<i>Conium maculatum</i> *	Apiaceae	Hemlock	new, based on R. Briggs pers. comm. 2007
<i>Daucus glochidiatus</i>	Apiaceae	Austral Carrot	
<i>Diplaspis nivis</i>	Apiaceae	Snow Pennywort	
<i>Hydrocotyle algida</i>	Apiaceae	Pennywort	
<i>Hydrocotyle geraniifolia</i>	Apiaceae	Forest Pennywort	no recent records, no voucher, possibly should be removed. Listed by Beuglehole 1987 as pers. comm. Willis (1963), but does not appear on Willis' lists.
<i>Hydrocotyle hirta</i>	Apiaceae	Hairy Pennywort	no recent records
<i>Oreomyrrhis eriopoda</i>	Apiaceae	Australian Carraway	
<i>Platysace lanceolata</i>	Apiaceae	Shrubby Platysace	
<i>Trachymene humilis</i> subsp. <i>breviscapa</i>	Apiaceae	Alpine Trachymene	name updated from <i>Trachymene breviscapa</i>
<i>Parsonia brownii</i>	Apocynaceae	Twining Silkpod	
<i>Astrotricha asperifolia</i>	Araliaceae	Star-hair	
<i>Astrotricha asperifolia</i> subsp. 1	Araliaceae		
<i>Astrotricha linearis</i> subsp. 2	Araliaceae	Narrow-leaf Star-hair	probably subsp. 2 based on Flora Vic. Vol. 4
<i>Polyscias sambucifolia</i> subsp. 3	Araliaceae	Elderberry Panax	
<i>Achillea millefolium</i> *	Asteraceae	Yarrow	
<i>Argyrotegium poliochlorum</i>	Asteraceae		name updated from <i>Euchiton poliochlorus</i>
<i>Bedfordia arborescens</i>	Asteraceae	Blanket Leaf	new, based on MEL records
<i>Brachyscome decipiens</i>	Asteraceae	Field daisy	no recent records
<i>Brachyscome diversifolia</i>	Asteraceae	Tall Daisy	new, based on MEL records
<i>Brachyscome multifida</i>	Asteraceae	Cut-leaf Daisy	new, based on MEL records
<i>Brachyscome nivalis</i>	Asteraceae	Snow Daisy	
<i>Brachyscome ptychocarpa</i>	Asteraceae	Tiny Daisy	no recent records; spelling corrected
<i>Brachyscome rigidula</i>	Asteraceae	Leafy Daisy	
<i>Brachyscome scapigera</i>	Asteraceae	Tufted Daisy	
<i>Brachyscome spathulata</i>	Asteraceae	Spoon Daisy	new
<i>Carduus pycnocephalus</i> *	Asteraceae	Slender Thistle	new, based on MEL records
<i>Cassinia aculeata</i>	Asteraceae	Common Dogwood	
<i>Cassinia longifolia</i>	Asteraceae	Shiny Cassinia	
<i>Celmisia costiniana</i>	Asteraceae	Silver Daisy	
<i>Celmisia pugioniformis</i>	Asteraceae		
<i>Celmisia tomentella</i>	Asteraceae		
<i>Centipeda elatinoides</i>	Asteraceae		new, based on MEL records



Species name	Family	Common name	Comments
<i>Chrysocephalum semipapposum</i>	Asteraceae	Clustered Everlasting	
<i>Cirsium vulgare*</i>	Asteraceae	Spear Thistle	
<i>Conyza sumatrensis</i>	Asteraceae		new, based on MEL records
<i>Craspedia</i> sp. 1	Asteraceae		<i>Craspedia</i> sp. 1 sensu Census Vict. Vasc. Pl. edn 7. Will probably soon be replaced by a published name.
<i>Craspedia aurantia</i>	Asteraceae	Orange Billy-buttons	this possibly = <i>C. jamesii</i> (N. Walsh pers. comm. 2007)
<i>Craspedia coolaminica</i>	Asteraceae	Ashen Billy-buttons	
<i>Craspedia jamesii</i>	Asteraceae	Green Billy-buttons	
<i>Craspedia</i> sp. B	Asteraceae		new. <i>Craspedia</i> sp. B sensu Census Vict. Vasc. Pl. edn 7. Will probably soon be replaced by a published name.
<i>Craspedia variabilis</i>	Asteraceae	Variable Billy-buttons	
<i>Crepis setosa</i>	Asteraceae	Bristly Hawksbeard	new, based on MEL records
<i>Cymbonotus preissianus</i>	Asteraceae	Austral Bear's ear	
<i>Erigeron bellidioides</i>	Asteraceae	Violet Fleabane	
<i>Erigeron nitidus</i>	Asteraceae	Sticky Fleabane	no recent records, but probably OK (N. Walsh pers. comm. 2007)
<i>Erigeron paludicola</i>	Asteraceae	Bog Fleabane	
<i>Euchiton gymnocephalus</i>	Asteraceae	Creeping Cudweed	
<i>Euchiton involucratus</i>	Asteraceae	Common Cudweed	
<i>Euchiton umbricola</i>	Asteraceae	Cliff Cudweed	
<i>Ewartia nubigena</i>	Asteraceae	Silver Ewartia	no recent records
<i>Gamochoaeta purpurea</i>	Asteraceae	Spike Cudweed	new, based on MEL records
<i>Helichrysum adenophorum</i> var. <i>waddelliae</i>	Asteraceae	Waddell Everlasting	
<i>Helichrysum leucopsideum</i>	Asteraceae	Satin Everlasting	new, based on MEL records
<i>Helichrysum rutidolepsis</i>	Asteraceae	Pale Everlasting	
<i>Helichrysum scorpioides</i>	Asteraceae	Button everlasting	new, based on MEL records
<i>Hypochoeris radicata*</i>	Asteraceae	Cat's-ear	
<i>Lagenophora stipitata</i>	Asteraceae	Blue Bottle-daisy	
<i>Leptinella filicula</i>	Asteraceae	Mountain Cotula	
<i>Leptorhynchos squamatus</i> subsp. <i>alpinus</i>	Asteraceae	Scaly Buttons	name updated from <i>Leptorhynchos</i> sp. 1
<i>Leucanthemum vulgare*</i>	Asteraceae	Ox-eye Daisy	spelling corrected, no recent records, record probably OK (N. Walsh pers. comm. 2007)
<i>Leucochrysum albicans</i> subsp. <i>albicans</i> var. <i>buffaloensis</i>	Asteraceae	Hoary Sunray	
<i>Microseris</i> sp. 2	Asteraceae	Yam Daisy	<i>Microseris</i> sp. 2 sensu Flora Victoria Vol. 4
<i>Olearia algida</i>	Asteraceae	Alpine Daisy-bush	
<i>Olearia argophylla</i>	Asteraceae	Musk Daisy-bush	
<i>Olearia brevipedunculata</i>	Asteraceae		new, collected 2006. First record of this species from Mt Buffalo.
<i>Olearia erubescens</i>	Asteraceae	Moth Daisy-bush	
<i>Olearia lirata</i>	Asteraceae	Snowy Daisy-bush	

Species name	Family	Common name	Comments
<i>Olearia megalophylla</i>	Asteraceae	Large-leaf Daisy-bush	
<i>Olearia phlogopappa</i> var. <i>flavescens</i>	Asteraceae	Dusty Daisy-bush	variety added
<i>Olearia phlogopappa</i> var. <i>phlogopappa</i>	Asteraceae	Dusty Daisy-bush	variety added
<i>Olearia ramulosa</i> var. <i>stricta</i>	Asteraceae	Twiggy Daisy-bush	
<i>Ozothamnus ferrugineus</i>	Asteraceae	Tree Everlasting	
<i>Ozothamnus</i> sp. 1	Asteraceae	Kerosene Bush	<i>Ozothamnus</i> sp. 1 sensu Flora Vic. Vol. 4
<i>Ozothamnus secundiflorus</i>	Asteraceae	Cascade Everlasting	
<i>Ozothamnus stirlingii</i>	Asteraceae	Ovens Everlasting	
<i>Ozothamnus thyrsoideus</i>	Asteraceae	Sticky Everlasting	
<i>Picris angustifolia</i> subsp. <i>merxmulleri</i>	Asteraceae	Hawkweed Picris	
<i>Podolepis jaceoides</i>	Asteraceae	Showy Podolepis	no recent records
<i>Podolepis robusta</i>	Asteraceae	Alpine Podolepis	
<i>Senecio glomeratus</i> subsp. <i>longifructus</i>	Asteraceae		new, based on MEL records
<i>Senecio gunnii</i>	Asteraceae	Silver Fireweed	
<i>Senecio hispidulus</i>	Asteraceae		new, collected 2006
<i>Senecio linearifolius</i> var. <i>denticulatus</i>	Asteraceae	Fireweed Grounsel	new, based on MEL records
<i>Senecio linearifolius</i> var. <i>latifolius</i>	Asteraceae	Fireweed Grounsel	new, based on MEL records
<i>Senecio pectinatus</i> var. <i>major</i>	Asteraceae	Alpine Grounsel	
<i>Senecio pinnatifolius</i> var. <i>alpinus</i>	Asteraceae	Variable Grounsel	new variety, replaces <i>S. pinnatifolius</i> var. <i>pectinatus</i>
<i>Senecio prenanthoides</i>	Asteraceae		new, based on MEL records
<i>Senecio quadridentatus</i>	Asteraceae	Cottony Fireweed	
<i>Senecio velleioides</i>	Asteraceae	Forest Grounsel	
<i>Solenogyne dominii</i>	Asteraceae		new, based on MEL records
<i>Solenogyne gunnii</i>	Asteraceae		new, based on MEL records
<i>Sonchus asper</i> *	Asteraceae	Spiny Milk-thistle	
<i>Tanacetum parthenium</i> *	Asteraceae	Feverfew	
<i>Taraxacum</i> sp.*	Asteraceae	Dandelion	
<i>Vittadinia cuneata</i> var. <i>cuneata</i>	Asteraceae		new, based on MEL records
<i>Xerochrysum bracteatum</i>	Asteraceae	Golden Everlasting	updated from <i>Bracteantha bracteata</i>
<i>Xerochrysum subundulatum</i>	Asteraceae	Orange Everlasting/Alpine everlasting	updated from <i>Bracteantha subundulata</i>
<i>Xerochrysum viscosum</i>	Asteraceae	Sticky Everlasting	new, collected 2006
<i>Pandorea pandorana</i>	Bignoniaceae	Tecoma	
<i>Cynoglossum suaveolens</i>	Boraginaceae	Sweet Hound's Tongue	
<i>Echium plantagineum</i> *	Boraginaceae	Paterson's Curse	
<i>Myosotis discolor</i> *	Boraginaceae	Yellow-and-blue Forget-me-not	new, based on MEL records (record not checked)
<i>Myosotis exarrhena</i>	Boraginaceae	Sweet Forget-me-not	

Species name	Family	Common name	Comments
<i>Cardamine hirsuta</i> *	Brassicaceae		new, based on MEL records
<i>Cardamine lilacina</i>	Brassicaceae	Common Bitter-cress	
<i>Rorippa dictyosperma</i>	Brassicaceae	Forest Bitter-cress	
<i>Brunonia australis</i>	Brunoniaceae	Blue Pincushion	new, based on MEL records
<i>Buddleja davidii</i> *	Buddlejaceae	Butterfly Bush	new, based on MEL records
<i>Isotoma axillaris</i>	Campanulaceae	Rock Isotome	
<i>Isotoma fluviatilis</i>	Campanulaceae	Swamp Isotome	
<i>Lobelia simplicicaulis</i>	Campanulaceae	Tall Lobelia	MEL record historical only, spelling corrected
<i>Lobelia gelida</i>	Campanulaceae	Snow Pratia	update from <i>Pratia gelida</i>
<i>Lobelia surrepens</i>	Campanulaceae	Mud Pratia	update from <i>Pratia surrepens</i>
<i>Wahlenbergia ceracea</i>	Campanulaceae	Waxy Bluebell	
<i>Wahlenbergia gloriosa</i>	Campanulaceae	Royal Bluebell	
<i>Wahlenbergia gracilis</i>	Campanulaceae	Sprawling Bluebell	
<i>Wahlenbergia graniticola</i>	Campanulaceae	Tufted Bluebell	new, based on MEL records
<i>Wahlenbergia stricta</i>	Campanulaceae	Tall Bluebell	
<i>Leycesteria formosa</i> *	Caprifoliaceae	Himalayan Honeysuckle	
<i>Cerastium glomeratum</i> *	Caryophyllaceae	Sticky Mouse-ear Chickweed	
<i>Cerastium vulgare</i>	Caryophyllaceae	Common Mouse-ear Chickweed	new, collected 2006
<i>Gypsophila tubulosa</i> *	Caryophyllaceae	Chalkwort	
<i>Moenchia erecta</i> *	Caryophyllaceae	Erect Chickweed	new, based on MEL records
<i>Saponaria officinalis</i> *	Caryophyllaceae	Common Soapwort	
<i>Scleranthus biflorus</i>	Caryophyllaceae	Twin-flower Knawel	
<i>Scleranthus fasciculatis</i>	Caryophyllaceae	Spreading Knawel	spelling corrected
<i>Spergularia rubra</i>	Caryophyllaceae	Red Sand-spurrey	
<i>Stellaria flaccida</i>	Caryophyllaceae	Forest Starwort	
<i>Stellaria pungens</i>	Caryophyllaceae	Prickly Starwort	
<i>Chenopodium pumilio</i>	Chenopodiaceae	Clammy Goosefoot	
<i>Hypericum androsaemum</i> *	Clusiaceae	Tutsan	new, based on MEL records
<i>Hypericum gramineum</i>	Clusiaceae	Small St John's Wort	
<i>Hypericum japonicum</i>	Clusiaceae	Matted St John's Wort	
<i>Hypericum perforatum</i> *	Clusiaceae	St John's Wort	
<i>Dichondra repens</i>	Convolvulaceae	Kidney-weed	new, based on MEL records
<i>Crassula sieberiana</i>	Crassulaceae	Austral Stonecrop	
<i>Bauera rubioides</i>	Cunoniaceae	Wiry Bauera	new, collected 2006
<i>Hibbertia empetrifolia</i>	Dilleniaceae	Guinea-flower	no recent records, no records of this species from alps in either Flora of Victoria or Toelken (1998).
<i>Hibbertia obtusifolia</i>	Dilleniaceae	Showy Guinea-flower	
<i>Hibbertia serpyllifolia</i>	Dilleniaceae	Guinea-flower	

Species name	Family	Common name	Comments
<i>Drosera arcturi</i>	Droseraceae	Alpine Sundew	
<i>Drosera peltata</i> subsp. <i>auriculata</i>	Droseraceae	Tall Sundew	
<i>Drosera peltata</i> subsp. <i>peltata</i>	Droseraceae	Pale Sundew	
<i>Acrothamnus hookeri</i>	Epacridaceae	Mountain Beard Heath	update from <i>Leucopogon hookeri</i>
<i>Acrotriche prostrata</i>	Epacridaceae	Trailing Ground-berry	new, based on MEL records
<i>Acrotriche serrulata</i>	Epacridaceae	Honey-pots	new, based on MEL records
<i>Epacris breviflora</i>	Epacridaceae	Drumstick Heath	
<i>Epacris gunnii</i>	Epacridaceae	Coral Heath	
<i>Epacris paludosa</i>	Epacridaceae	Swamp Heath	
<i>Leucopogon fletcheri</i> subsp. <i>brevisepalus</i>	Epacridaceae	Twin-flower Beard-heath	spelling corrected
<i>Leucopogon gelidus</i>	Epacridaceae	Beard-heath	
<i>Monotoca scoparia</i>	Epacridaceae	Prickly Broom-heath	
<i>Richea continentis</i>	Epacridaceae	Candle Heath	
<i>Gaultheria appressa</i>	Ericaceae	Waxberry	
<i>Micranthemum hexandrum</i>	Euphorbiaceae	Box Micranthemum	
<i>Poranthera microphylla</i>	Euphorbiaceae	Small Poranthera	
<i>Bossiaea bracteosa</i>	Fabaceae	Mountain Leafless Bossiaea	MEL (and other) records historical only
<i>Bossiaea buxifolia</i>	Fabaceae	Matted Bossiaea	
<i>Bossiaea foliosa</i>	Fabaceae	Leafy Bossiaea	
<i>Bossiaea obcordata</i>	Fabaceae	Spiny Bossiaea	new, based on MEL records
<i>Cytisus scoparius</i> *	Fabaceae	English Broom	no recent records
<i>Daviesia latifolia</i>	Fabaceae	Hop Bitter-pea	
<i>Daviesia laxiflora</i>	Fabaceae	Narrow-leaf Bitter pea	no recent records
<i>Daviesia ulicifolia</i> subsp. <i>ruscifolia</i>	Fabaceae	Gorse Bitter-pea	subsp. added
<i>Daviesia ulicifolia</i> subsp. <i>ulicifolia</i>	Fabaceae	Gorse Bitter-pea	new subsp., record based on photograph by R. Briggs
<i>Dillwynia cinerascens</i>	Fabaceae	Grey Parrot-pea	one MEL record of unknown date/collector/locality
<i>Dillwynia phyllicoides</i>	Fabaceae	Small-leaf Parrot-pea	
<i>Dillwynia sericea</i>	Fabaceae	Showy Parrot-pea	
<i>Glycine clandestina</i>	Fabaceae	Twiggy Glycine	
<i>Gompholobium huegelii</i>	Fabaceae	Common Wedge-pea	
<i>Hardenbergia violacea</i>	Fabaceae	Purple Coral pea	
<i>Hovea asperifolia</i> subsp. <i>asperifolia</i>	Fabaceae		updated from <i>Hovea pannosa</i> (according to Thompson 2001)
<i>Hovea heterophylla</i>	Fabaceae		updated from <i>Hovea linearis</i> (according to Thompson (2001).
<i>Hovea montana</i>	Fabaceae		
<i>Indigofera australis</i>	Fabaceae	Austral Indigo	new, based on MEL records
<i>Lotus corniculatus</i> *	Fabaceae	Bird's-foot Trefoil	
<i>Lotus uliginosus</i> *	Fabaceae	Greater Bird's-foot Trefoil	new, based on MEL records
<i>Mirbelia oxylobioides</i>	Fabaceae	Mountain Mirbelia	new, based on MEL records
<i>Platylobium formosum</i>	Fabaceae	Handsome Flat-pea	
<i>Podolobium alpestre</i>	Fabaceae	Alpine Shaggy-pea	

Species name	Family	Common name	Comments
<i>Pultenaea spinosa</i>	Fabaceae	Grey Bush-pea	name updated from <i>P. cunninghamii</i> (nom. inval.)
<i>Pultenaea fasciculata</i>	Fabaceae	Apline Bush-pea	no recent records
<i>Pultenaea forsythiana</i>	Fabaceae	Prickly Bush-pea	
<i>Pultenaea gunnii</i>	Fabaceae	Golden Bush-pea	MEL records historical only
<i>Pultenaea mollis</i>	Fabaceae	Soft Bush-pea	
<i>Pultenaea tenella</i>	Fabaceae	Delicate Bush-pea	
<i>Trifolium dubium</i> *	Fabaceae	Suckling Clover	
<i>Trifolium pratense</i> *	Fabaceae	Red Clover	
<i>Trifolium repens</i> *	Fabaceae	White Clover	
<i>Vicia sativa</i> subsp. <i>nigra</i> *	Fabaceae	Narrow-leaf Vetch	
<i>Centaurium erythraea</i> *	Gentianaceae	Austral Centaury	update from <i>Centaurium pulchellum</i>
<i>Gentianella cunninghamii</i> subsp. <i>cunninghamii</i>	Gentianaceae	Mountain Gentian	genus name updated from <i>Chionogentias</i>
<i>Gentianella cunninghamii</i> subsp. <i>major</i>	Gentianaceae		genus name updated from <i>Chionogentias</i>
<i>Gentianella muelleriana</i> subsp. <i>muelleriana</i>	Gentianaceae		new
<i>Gentianella polysperes</i>	Gentianaceae		Genus name updated. No recent records of this species, possibly should be removed until verified by a herbarium specimen
<i>Geranium antrorsum</i>	Geraniaeaceae	Rosetted Crane's-bill	
<i>Geranium potentilloides</i>	Geraniaeaceae	Soft Crane's-bill	new
<i>Geranium solanderi</i>	Geraniaeaceae	Austral Crane's-bill	
<i>Geranium</i> sp. 2	Geraniaeaceae	Variable Crane's-bill	new, based on MEL records; <i>Geranium</i> sp 2 sensu Flora Victoria Vol. 4 (1999)
<i>Pelargonium australe</i>	Geraniaeaceae	Austral Stork's-bill	
<i>Goodenia elongata</i>	Goodeniaceae	Lanky Goodenia	
<i>Goodenia hederacea</i> subsp. <i>alpestris</i>	Goodeniaceae	Ivy Goodenia	
<i>Scaevola hookeri</i>	Goodeniaceae	Creeping fan-flower	
<i>Velleia montana</i>	Goodeniaceae	Mountain Velleia	
<i>Gonocarpus micranthus</i>	Haloragaceae	Creeping Raspwort	
<i>Gonocarpus montanus</i>	Haloragaceae	Mat Raspwort	
<i>Gonocarpus tetragynus</i>	Haloragaceae	Raspwort	
<i>Myriophyllum pedunculatum</i>	Haloragaceae	Mat Water-milfoil	
<i>Myriophyllum simulans</i>	Haloragaceae	Amphibious Water-milfoil	
<i>Ajuga australis</i>	Lamiaceae	Austral Bugle	
<i>Lycopus australis</i>	Lamiaceae	Australian Gipsywort	new, based on MEL records
<i>Mentha laxiflora</i>	Lamiaceae	Forest Mint	
<i>Prostanthera cuneata</i>	Lamiaceae	Alpine Mint-bush	
<i>Prostanthera decussata</i>	Lamiaceae	Dense mint-bush	
<i>Prostanthera hirtula</i>	Lamiaceae	Hairy Mint-bush	

Species name	Family	Common name	Comments
<i>Prostanthera lasianthos</i> var. <i>lasianthos</i>	Lamiaceae	Victorian Christmas-bush	
<i>Prostanthera monticola</i>	Lamiaceae	Buffalo Mint-bush	
<i>Prostanthera rotundifolia</i>	Lamiaceae	Round-leaf Mint-bush	
<i>Prunella vulgaris</i> *	Lamiaceae	Self-heal	
<i>Westringia senifolia</i>	Lamiaceae	Alpine Westringia	
<i>Cassytha melantha</i>	Lauraceae	Coarse Dodder-laurel	
<i>Utricularia dichotoma</i>	Lentibulariaceae	Fairie's Aprons	
<i>Linum marginale</i>	Linaceae	Native Flax	
<i>Logania albiflora</i>	Loganiaceae	Narrow-leaf Logania	
<i>Mitrasacme serpyllifolia</i>	Loganiaceae	Thyme Mitrewort	
<i>Amyema pendula</i>	Loranthaceae	Drooping Mistletoe	
<i>Muellerina eucalyptoides</i>	Loranthaceae	Creeping Mistletoe	new, based on MEL records
<i>Lythrum hyssopifolia</i>	Lythraceae	Lesser Loosestrife	new, based on MEL records
<i>Acacia alpina</i>	Mimosaceae	Alpine Wattle	
<i>Acacia buxifolia</i>	Mimosaceae	Box-leaf Wattle	no recent records, unlikely to be present
<i>Acacia dallachiana</i>	Mimosaceae	Catkin Wattle	
<i>Acacia decurrens</i> *	Mimosaceae	Early Black-wattle	new, based on MEL records
<i>Acacia dealbata</i>	Mimosaceae	Silver Wattle	MEL record historical only
<i>Acacia gunnii</i>	Mimosaceae	Ploughshare Wattle	new, based on MEL records
<i>Acacia kettlewelliae</i>	Mimosaceae	Buffalo Wattle	MEL records historical only
<i>Acacia leprosa</i>	Mimosaceae	Cinnamon Wattle	on Mt Buffalo this species name will possibly soon be replaced by the name <i>A. graveolens</i> , but the revision (D. Murphy) is not yet published.
<i>Acacia melanoxydon</i>	Mimosaceae	Blackwood	
<i>Acacia obliquinervia</i>	Mimosaceae	Mountain Hickory Wattle	
<i>Acacia paradoxa</i>	Mimosaceae	Hedge Wattle	no recent records
<i>Acacia phlebophylla</i> **	Mimosaceae	Buffalo Sallow Wattle	
<i>Acacia pravissima</i>	Mimosaceae	Ovens Wattle	
<i>Acacia rubida</i>	Mimosaceae	Red-stem Wattle	
<i>Acacia ulicifolia</i>	Mimosaceae	Juniper Wattle	new, based on MEL records
<i>Acacia verniciflua</i>	Mimosaceae	Varnish Wattle	
<i>Atherosperma moschatum</i>	Monimiaceae	Southern Sassafras	
<i>Hedycarya angustifolia</i>	Monimiaceae	Austral Mulberry	
<i>Babingtonia crenulata</i> **	Myrtaceae	Fern-leaf Baeckea	
<i>Baeckea gunniana</i>	Myrtaceae	Alpine Baeckea	
<i>Baeckea utilis</i>	Myrtaceae	Mountain Baeckea	
<i>Callistemon pallidus</i>	Myrtaceae	Lemon Bottlebrush	
<i>Callistemon ptyoides</i>	Myrtaceae	Alpine Bottlebrush	
<i>Calytrix tetragona</i>	Myrtaceae	Common Fringe-myrtle	
<i>Eucalyptus chapmaniana</i>	Myrtaceae	Bogong Gum	

Species name	Family	Common name	Comments
<i>Eucalyptus dalrympleana</i>	Myrtaceae	Mountain Gum	
<i>Eucalyptus delegatensis</i>	Myrtaceae	Alpine Ash	
<i>Eucalyptus dives</i>	Myrtaceae	Broad-leaved Peppermint	
<i>Eucalyptus globulus</i> subsp. <i>bicostata</i>	Myrtaceae	Southern Blue-gum	new, based on MEL records
<i>Eucalyptus mannifera</i>	Myrtaceae	Brittle Gum	
<i>Eucalyptus nortonii</i>	Myrtaceae		new, collected 2007; replaces <i>E. goniocalyx</i>
<i>Eucalyptus radiata</i>	Myrtaceae	Narrow-leaved Peppermint	
<i>Eucalyptus macrorhyncha</i> subsp. <i>macrorhyncha</i>	Myrtaceae	Red Stringybark	new, based on MEL records
<i>Eucalyptus mitchelliana</i> **	Myrtaceae	Mount Buffalo Sallee	
<i>Eucalyptus obliqua</i> var. <i>obliqua</i>	Myrtaceae	Messmate Stringybark	new, based on MEL records
<i>Eucalyptus pauciflora</i>	Myrtaceae	Snow Gum	
<i>Eucalyptus radiata</i>	Myrtaceae	Narrow-leaved Peppermint	
<i>Eucalyptus rubida</i>	Myrtaceae	Candlebark	
<i>Eucalyptus stellulata</i>	Myrtaceae	Black Sallee	
<i>Euryomyrtus ramosissima</i>	Myrtaceae	Rosy Baeckea	updated from <i>Baeckea ramosissima</i>
<i>Kunzea ericoides</i>	Myrtaceae	Burgan	
<i>Kunzea muelleri</i>	Myrtaceae	Yellow Kunzea	
<i>Kunzea parvifolia</i>	Myrtaceae	Violet Kunzea	
<i>Leptospermum brevipes</i>	Myrtaceae	Slender Tea-tree	
<i>Leptospermum continentale</i>	Myrtaceae	Prickly Tea-tree	
<i>Leptospermum grandifolium</i>	Myrtaceae	Mountain Tea-tree	
<i>Leptospermum micromyrtus</i>	Myrtaceae	Alpine Tea-tree	
<i>Leptospermum myrtifolium</i>	Myrtaceae	Myrtle Tea-tree	
<i>Notelaea ligustrina</i>	Oleaceae	Privet Mock-olive	
<i>Epilobium billardieranum</i> subsp. <i>cinereum</i>	Onagraceae	Variable Willow-herb	
<i>Epilobium ciliatum</i> *	Onagraceae	Glandular Willow-herb	new, based on MEL records
<i>Epilobium gunnianum</i>	Onagraceae	Gunn's Willow-herb	
<i>Epilobium hirtigerum</i>	Onagraceae	Hairy Willow-herb	new, based on MEL records
<i>Epilobium sarmentaceum</i>	Onagraceae	Mountain Willow-herb	new, based on MEL records
<i>Oxalis corniculata</i> *	Oxalidaceae	Creeping Wood-sorrel	
<i>Billardiera macrantha</i>	Pittosporaceae	Purple Apple-berry	name updated from <i>B. longiflora</i> ; this sp. now restricted to Tas. (N. Walsh pers. comm. 2007; Cayzer et al. 2004)
<i>Billardiera mutabilis</i>	Pittosporaceae	Common Apple-berry	name updated from <i>B. scandens</i> (according to Cayzer et al. 2004)
<i>Bursaria spinosa</i> subsp. <i>spinosa</i>	Pittosporaceae	Sweet Bursaria	new, based on MEL records
<i>Rhytidosporum inconspicuum</i>	Pittosporaceae	Alpine Marianth	name updated from <i>Rhytidosporum</i> sp. 1
<i>Plantago alpestris</i>	Plantaginaceae	Tasman Plantain	

Species name	Family	Common name	Comments
<i>Plantago euryphylla</i>	Plantaginaceae	Broad Plantain	
<i>Plantago lanceolata</i> *	Plantaginaceae	Ribwort Plantain	
<i>Plantago varia</i>	Plantaginaceae	Variable Plantain	new, collected 2006
<i>Navarretia squarrosa</i> *	Polemoniaceae	Californian Stinkweed	new, based on MEL records
<i>Comesperma ericinum</i>	Polygalaceae	Heath Milkwort	
<i>Comesperma retusum</i>	Polygalaceae	Mountain Milkwort	
<i>Comesperma volubile</i>	Polygalaceae	Love Creeper	
<i>Acetosella vulgaris</i> *	Polygonaceae	Sheep Sorrel	
<i>Persicaria hydropiper</i>	Polygonaceae	Water Pepper	
<i>Montia fontana</i> subsp. <i>chondrosperma</i>	Portulacaceae	Water-blinks	
<i>Neopaxia australasica</i>	Portulacaceae	White Purslane	
<i>Anagallis arvensis</i> *	Primulaceae	Scarlet Pimpernel	
<i>Grevillea alpina</i>	Proteaceae	Mountain Grevillea	
<i>Grevillea alpivaga</i> **	Proteaceae	Small-flowered Grevillea	
<i>Grevillea australis</i>	Proteaceae	Alpine Grevillea	
<i>Grevillea victoriae</i>	Proteaceae	Royal Grevillea	
<i>Hakea lissosperma</i>	Proteaceae	Mountain Needlewood	
<i>Lomatia fraseri</i>	Proteaceae	Tree lomatia	
<i>Lomatia ilicifolia</i>	Proteaceae	Holly-leaf Lomatia	
<i>Lomatia myricoides</i>	Proteaceae	River Lomatia	
<i>Orites lancifolia</i>	Proteaceae	Alpine Orites	
<i>Persoonia chamaepeuce</i>	Proteaceae	Heathy Geebung	update/new addition (hybrid removed)
<i>Persoonia rigida</i>	Proteaceae	Hairy geebung	
<i>Psychrophila introloba</i>	Ranunculaceae	Alpine Marsh-marigold	genus name updated from <i>Caltha</i>
<i>Clematis aristata</i>	Ranunculaceae	Mountain Clematis	
<i>Ranunculus collinus</i>	Ranunculaceae	Strawberry Buttercup	no recent records
<i>Ranunculus graniticola</i>	Ranunculaceae	Granite Buttercup	
<i>Ranunculus gunnianus</i>	Ranunculaceae	Gunn's Alpine Buttercup	
<i>Ranunculus lappaceus</i>	Ranunculaceae	Australian Buttercup	new, based on MEL records
<i>Ranunculus millanii</i>	Ranunculaceae	Dwarf Buttercup	
<i>Ranunculus muricatus</i> *	Ranunculaceae	Sharp Buttercup	
<i>Ranunculus pimpinellifolius</i>	Ranunculaceae	Bog Buttercup	
<i>Ranunculus plebius</i>	Ranunculaceae	Forest Buttercup	
<i>Ranunculus repens</i> *	Ranunculaceae	Creeping Buttercup	new, based on MEL records
<i>Cryptandra amara</i>	Rhamnaceae	Bitter Cryptandra	MEL records historial only
<i>Pomaderris angustifolia</i>	Rhamnaceae		new, based on MEL records
<i>Pomaderris aspera</i>	Rhamnaceae	Hazel Pomaderris	new, based on MEL records
<i>Pomaderris lanigera</i>	Rhamnaceae		
<i>Pomaderris helianthemifolia</i> subsp. <i>minor</i>	Rhamnaceae	Blunt-leaf Pomaderris	
<i>Pomaderris prunifolia</i> var. <i>prunifolia</i>	Rhamnaceae		new, based on MEL records
<i>Pomaderris velutina</i>	Rhamnaceae		new, based on MEL records



Species name	Family	Common name	Comments
<i>Spyridum parvifolium</i>	Rhamnaceae	Dusty Miller	
<i>Acaena novae-zelandiae</i>	Rosaceae	Bidgee-widgee	
<i>Aceana ovina</i>	Rosaceae	Sheep's Burr	
<i>Aphanes inexpectatus*</i>	Rosaceae	Parsley Piert	name updated from <i>A. arvensis</i>
<i>Cotoneaster horizontalis*</i>	Rosaceae		this sp. is considered a garden escape, and not naturalized on Mt Buffalo (Flora Vic. Vol. 3)
<i>Malus X domestica*/Malus pumila*</i>	Rosaceae	Common Apple	
<i>Rosa rubiginosa*</i>	Rosaceae	Sweet Briar	
<i>Rubus anglocandicans*</i>	Rosaceae	Blackberry	name updated from <i>Rubus discolor</i>
<i>Rubus parvifolius</i>	Rosaceae	Small-leaf Bramble	
<i>Asperula conferta</i>	Rubiaceae	Common Woodruff	new, based on MEL records
<i>Asperula gunnii</i>	Rubiaceae	Mountain Woodruff	
<i>Asperula euryphylla</i>	Rubiaceae	Broad-leaf Woodruff	
<i>Asperula pusilla</i>	Rubiaceae	Alpine woodruff	new, collected 2007
<i>Asperula scoparia</i>	Rubiaceae	Prickly Woodruff	
<i>Coprosma hirtella</i>	Rubiaceae	Rough Coprosma	
<i>Coprosma moorei</i>	Rubiaceae	Turquoise Coprosma	
<i>Coprosma nitida</i>	Rubiaceae	Shining Coprosma	
<i>Coprosma quadrifida</i>	Rubiaceae	Prickly Currant bush	
<i>Coprosma granadensis</i>	Rubiaceae	Matted Nertera	name updated from <i>Nertera granadensis</i>
<i>Galium gaudichaudii</i>	Rubiaceae	Rough Bedstraw	
<i>Opercularia varia</i>	Rubiaceae	Variable Stinkweed	
<i>Pomax umbellata</i>	Rubiaceae	Pomax	MEL records historical only
<i>Asterolasia asteriscophora</i>	Rutaceae	Lemon Star-bush	
<i>Asterolasia trymalioides</i>	Rutaceae	Alpine Star-bush	MEL records historical only
<i>Boronia algida</i>	Rutaceae	Alpine Boronia	
<i>Boronia nana</i> var. <i>hyssopifolia</i>	Rutaceae	Dwarf Boronia	new, based on MEL records
<i>Correa lawrenceana</i> subsp. <i>latrobeana</i>	Rutaceae	Mountain Correa	
<i>Correa reflexa</i>	Rutaceae	Common Correa	
<i>Phebalium squamulosum</i> subsp. <i>alpinum</i>	Rutaceae	Forest Phebalium	
<i>Populus X canescens*</i>	Saliaceae	Grey Poplar	
<i>Salix cinerea*</i>	Saliaceae	Grey Sallow	
<i>Exocarpos cupressiformis</i>	Santalaceae	Cherry Ballart	
<i>Exocarpos nanus</i>	Santalaceae	Alpine Ballart	
<i>Exocarpos strictus</i>	Santalaceae	Pale-fruit Ballart	
<i>Dodonaea boroniifolia</i>	Sapindaceae	Hairy hop-bush	MEL records historical only
<i>Dodonaea viscosa</i> subsp. <i>cuneata</i>	Sapindaceae	Sticky hop-bush	
<i>Derwentia derwentiana</i> subsp. <i>derwentiana</i>	Scrophulariaceae	Derwent Speedwell	subsp. added

Species name	Family	Common name	Comments
<i>Derwentia derwentiana</i> subsp. <i>maideniana</i>	Scrophulariaceae	Derwent Speedwell	
<i>Derwentia nivea</i>	Scrophulariaceae	Snow Speedwell	
<i>Euphrasia collina</i> subsp. <i>collina</i>	Scrophulariaceae		new, based on MEL records
<i>Euphrasia collina</i> subsp. <i>paludosa</i>	Scrophulariaceae	Purple Eyebright	
<i>Euphrasia crassiuscula</i> subsp. <i>crassiuscula</i>	Scrophulariaceae	Glacial eyebright	
<i>Mimulus moschatus</i> *	Scrophulariaceae	Musk Monkey-flower	
<i>Verbascum virgatum</i> *	Scrophulariaceae	Tiggy Mullein	
<i>Veronica arvensis</i> *	Scrophulariaceae	Wall Speedwell	
<i>Veronica calycina</i>	Scrophulariaceae	Cup Speedwell	
<i>Veronica serpyllifolia</i>	Scrophulariaceae	Thyme Speedwell	
<i>Veronica subtilis</i>	Scrophulariaceae		new, based on MEL records; name recently updated from <i>Veronica</i> sp. 2
<i>Stackhousia monogyna</i>	Stackhousiaceae	Creamy Stackhousia	
<i>Stackhousia viminea</i>	Stackhousiaceae	Slender Stackhousia	
<i>Stylidium montanum</i>	Stylidiaceae		updated from <i>Stylidium</i> sp. 1
<i>Stylidium armeria</i>	Stylidiaceae		new
<i>Pimelea alpina</i>	Thymeleaceae	Alpine Rice-flower	
<i>Pimelea axiflora</i> subsp. <i>alpina</i>	Thymeleaceae	Alpine Bootlace-bush	
<i>Pimelea curviflora</i>	Thymeleaceae	Curved Rice-flower	
<i>Pimelea glauca</i>	Thymeleaceae	Smooth Rice-flower	MEL record historical only
<i>Pimelea humilis</i>	Thymeleaceae	Common Rice-flower	no recent records
<i>Pimelea ligustrina</i>	Thymeleaceae	Tall Rice-flower	
<i>Pimelea linifolia</i>	Thymeleaceae	Slender Rice-flower	
<i>Tetradheca bauerifolia</i>	Tremadraceae	Heath Pink-bells	
<i>Tetradheca ciliata</i>	Tremadraceae	Pink Bells	
<i>Tetradheca thymifolia</i>	Tremadraceae		no recent records
<i>Australina pusilla</i> subsp. <i>muelleri</i>	Urticaceae	Shade Nettle	MEL record historical only
<i>Urtica incisa</i>	Urticaceae	Scrub Nettle	
<i>Verbena bonariensis</i> var. <i>bonariensis</i> *	Verbenaceae	Purple-top Verbena	new, based on MEL records
<i>Verbena officinalis</i> var. <i>monticola</i> *	Verbenaceae	Common Verbena	new, based on MEL records
<i>Melicytus dentatus</i>	Violaceae	Tree Violet	update
<i>Melicytus</i> sp. aff. <i>dentatus</i> (snowfields)	Violaceae		new, collected 2006; also N. Walsh pers. comm. 2006.
<i>Viola betonicifolia</i>	Violaceae	Purple Violet/Showy Violet	
<i>Viola eminens</i>	Violaceae		new, based on MEL records
<i>Viola fuscoviolacea</i>	Violaceae		new, based on MEL records, replaces <i>V. sieberiana</i>

Species name	Family	Common name	Comments
<i>Viola hederacea</i>	Violaceae	Ivy-leaf violet	
<i>Tasmannia lanceolata</i>	Winteraceae	Mountain Pepper	
<i>Tasmannia xerophila</i>	Winteraceae	Alpine Pepper	
<b>Known hybrids</b>			
<i>Ranunculus graniticola</i> X <i>R. millanii</i> ( <i>R. X ligulatus</i> )	Ranunculaceae		Record in Grimwade collection.

\* Introduced species

\*\* Endemic species (to Mt Buffalo NP)

**Appendix 4.** Species removed from Parks Victoria's existing list of vascular plants for Mt Buffalo National Park. Unless otherwise stated, deletions are based on discussions with N. Walsh (2006, 2007).

Species name	Family	Common name	Reason for removal
<b>Monocotyledons</b>			
<i>Juncus pallidus</i>	Juncaceae	Pale Rush	No recent records; dubious for Mt Buffalo
<i>Luzula acutiflora</i>	Juncaceae	Field Woodrush	no recent records; dubious for Mt Buffalo plus unreliable collector
<i>Prasophyllum odoratum</i>	Orchidaceae	Fragrant Leek-orchid	does not occur on Mt Buffalo
<i>Prasophyllum patens</i>	Orchidaceae	Broad-lip Leek-orchid	replaced by <i>P. sp. aff. odoratum</i> 11
<i>Agrostis sp. aff. hiemalis</i>	Poaceae	Fine-leaf Bent	probably <i>A. propinqua</i> , <i>A. bettyae</i> or <i>A. thompsoniae</i>
<i>Deyeuxia imbricata</i>	Poaceae	Bent-grass	Does not occur on Mt Buffalo
<i>Hierochloa submutica</i>	Poaceae	Holy-Grass	No recent records; unlikely, usually a much higher alt. sp.
<b>Dicotyledons</b>			
<i>Craspedia alba</i>	Asteraceae	White Billy-buttons	Does not occur on Mt Buffalo
<i>Craspedia crocata</i>	Asteraceae		Does not occur on Mt Buffalo
<i>Senecio pinnatifolius</i> var. <i>pleiocephalus</i>	Asteraceae		replaced by <i>S. pinnatifolius</i> var. <i>alpinus</i>
<i>Goodenia macbarronii</i>	Goodeniaceae	Narrow Goodenia	
<i>Eucalyptus goniocalyx</i>	Myrtaceae	Bundy	replaced by <i>E. nortonii</i>
<i>Rulingia dasyphylla</i>	Steruliaceae	Clustered Kerrawang	MEL records historical only; very dubious, also locality on MEL specimen imprecise
<i>Viola sieberiana</i>	Violaceae	Tiny Violet	does not occur in Victoria